

TECHNICAL PROPOSAL

POP2 AEE1032 SEKOLAH MENENGAH KEBANGSAAN RAJA SHAHRIMAN (D-SIDE)

Company Name : Bahrul Qadim Sdn Bhd
Company Address : Lot 81, 698, Mukim 9, Jalan Pekan Darat, Permatang Tok Jaya, 13800 Butterworth, Pulau Pinang
Prepared By : Dzulfakar Mohd Azali
Date : 09/08/2024



Point A



Point B

Starting Point

Site / Boundary Name : Beruas
Address : SMK Raja Shahrman, Jalan Parit, 32700 Beruas, Perak
District : Manjung
Postcode : 32700
State : Perak
GPS Coordinate : 4.495224, 100.788680
LRD : A

End Point

Site / Boundary Name : Beruas
Address : Kampung Changkat Beruas, 32700 Beruas, Perak
District : Manjung
Postcode : 32700
State : Perak
GPS Coordinate : 4.491275, 100.784597
LRD : B



SUPPLY, INSTALLATION AND COMMISSIONING OF FTTX NETWORK INFRASTRUCTURE FOR ALLO TECHNOLOGY SDN BHD POP 2 PROJECT (D-SIDE) - PMU PRMS FOR AEE1032-SEKOLAH MENENGAH KEBANGSAAN RAJA SHAHRIMAN



1.0 WORK SUMMARY

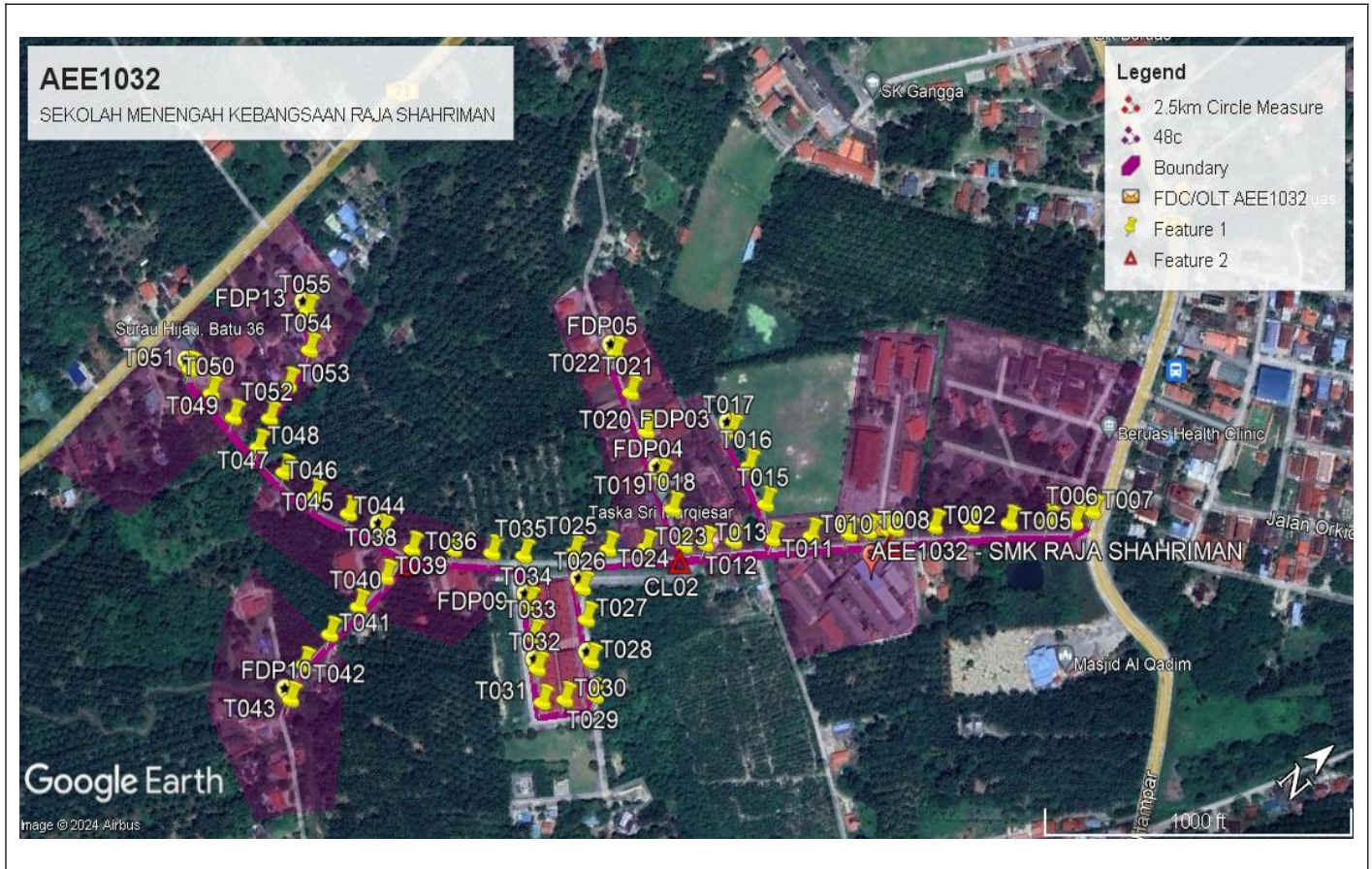
NO	PROPOSED DISTANCE AND METHOD	UNIT	QUANTITY
1	Horizontal Directional Drilling (HDD)	m	0
2	Carriage Way Open Trench (CW)	m	0
3	Grass Verge Open Trenching (GV)	m	0
4	Micro Trenching (MT)	m	0
5	Aerial Cable	m	2395
Total			2395

NO	OTHER INFORMATION	UNIT	QUANTITY
1	Installation of Short Span ADSS Fibre Cables	m	2395
2	Install New Pole	ea	56
3	Install New JRC7 Manhole	ea	0
4	Install GI Riser 100mm	ea	0
5	Install Fiber Distribution Point and Closure (Splicing, Termination and Testing)	ea	13
6	Estimated Time Required for Completion	days	30

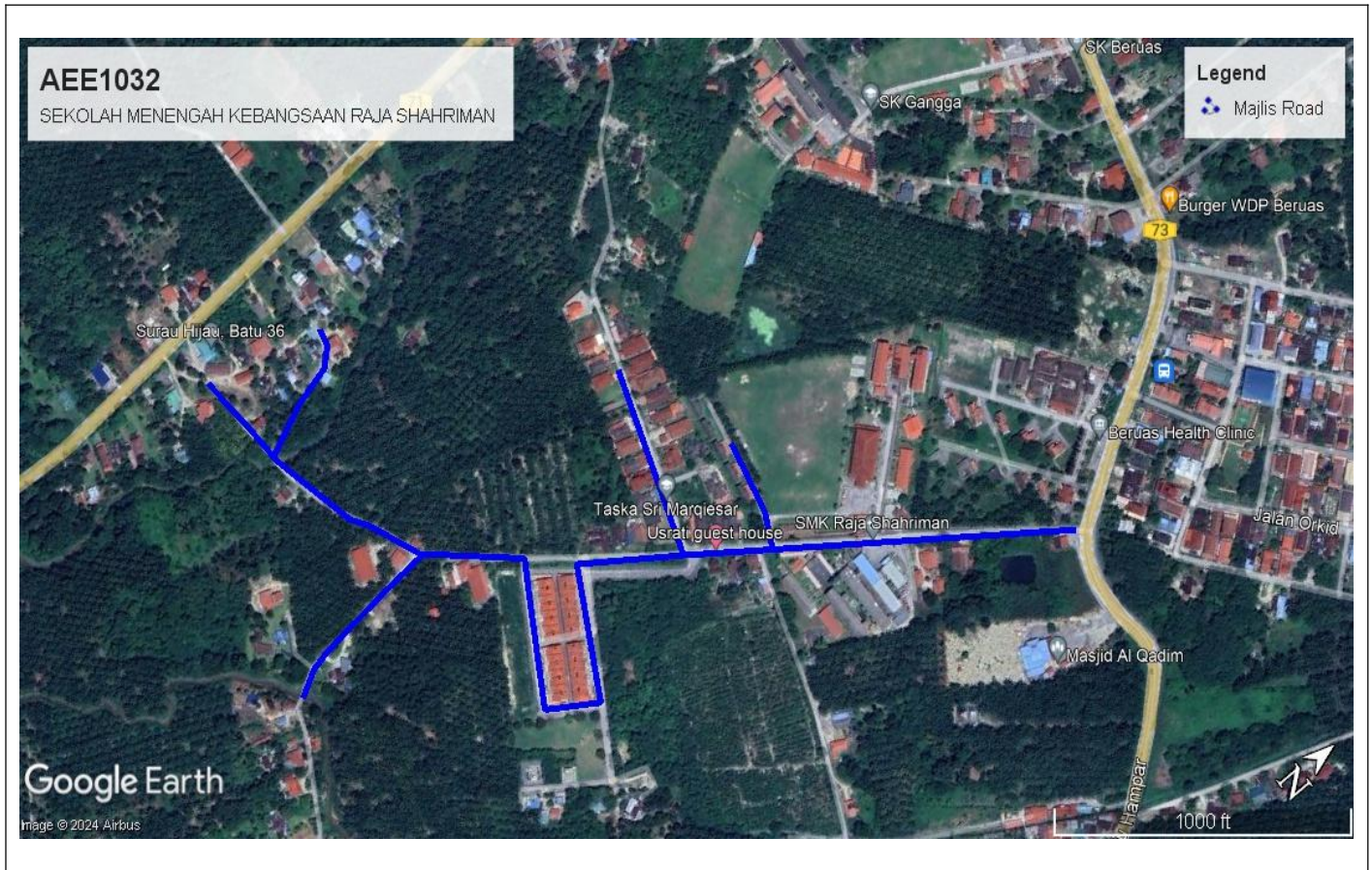
2.0 LOCAL AUTHORITY SUMMARY

Daerah Manjung

NO	ITEMS	Owner	Quantity	Distance (m)
1	HDD	JKR	-	-
		Majlis	-	-
		Estate / Private Land	-	-
2	New Pole	JKR	10	350
		Majlis	46	1610
		Estate / Private Land	-	-
Total Distance (m)				1960



3.2 Site Plan - KMZ Routing (All Local Authority)



Blue Colour - Majlis Road

3.0 PROPOSED NEW POLE

Proposed New Pole Coordinate					
No.	Pole Number	Distance (m)	Latitude	Longitude	Local Authority
1	T000	10	4.495215	100.788695	Majlis Perbandaran Manjung
2	T001	39	4.495271	100.788730	Majlis Perbandaran Manjung
3	T002	37	4.495554	100.788928	Majlis Perbandaran Manjung
4	T003	38	4.495821	100.789123	Majlis Perbandaran Manjung
5	T004	39	4.496098	100.789323	Majlis Perbandaran Manjung
6	T005	27	4.496375	100.789536	Majlis Perbandaran Manjung
7	T006	21	4.496559	100.789687	Majlis Perbandaran Manjung
8	T007	20	4.496739	100.789715	Majlis Perbandaran Manjung
9	T008	20	4.495067	100.788592	Majlis Perbandaran Manjung
10	T009	38	4.494921	100.788498	Majlis Perbandaran Manjung
11	T010	39	4.494645	100.788300	Majlis Perbandaran Manjung
12	T011	39	4.494354	100.788105	Majlis Perbandaran Manjung
13	T012	29	4.494074	100.787901	Majlis Perbandaran Manjung
14	T013	21	4.493861	100.787761	Majlis Perbandaran Manjung
15	T014	33	4.493704	100.787654	Majlis Perbandaran Manjung
16	T015	40	4.494489	100.787839	Majlis Perbandaran Manjung
17	T016	37	4.494568	100.787497	Majlis Perbandaran Manjung
18	T017	36	4.494629	100.787173	Majlis Perbandaran Manjung
19	T018	33	4.493813	100.787349	Majlis Perbandaran Manjung
20	T019	44	4.493901	100.787070	Majlis Perbandaran Manjung
21	T020	41	4.494031	100.786696	Majlis Perbandaran Manjung
22	T021	38	4.494122	100.786355	Majlis Perbandaran Manjung
23	T022	38	4.494217	100.786017	Majlis Perbandaran Manjung
24	T023	38	4.493422	100.787452	Majlis Perbandaran Manjung
25	T024	34	4.493154	100.787252	Majlis Perbandaran Manjung
26	T025	33	4.492897	100.787082	Majlis Perbandaran Manjung
27	T026	32	4.492774	100.787362	Majlis Perbandaran Manjung
28	T027	38	4.492637	100.787589	Majlis Perbandaran Manjung
29	T028	33	4.492453	100.787887	Majlis Perbandaran Manjung
30	T029	31	4.492305	100.788138	Majlis Perbandaran Manjung
31	T030	23	4.492071	100.787993	Majlis Perbandaran Manjung
32	T031	34	4.491899	100.787884	Majlis Perbandaran Manjung
33	T032	30	4.492040	100.787636	Majlis Perbandaran Manjung
34	T033	33	4.492179	100.787400	Majlis Perbandaran Manjung
35	T034	43	4.492320	100.787163	Majlis Perbandaran Manjung
36	T035	32	4.492529	100.786822	Majlis Perbandaran Manjung
37	T036	39	4.492322	100.786626	Majlis Perbandaran Manjung
38	T037	41	4.492069	100.786391	Majlis Perbandaran Manjung

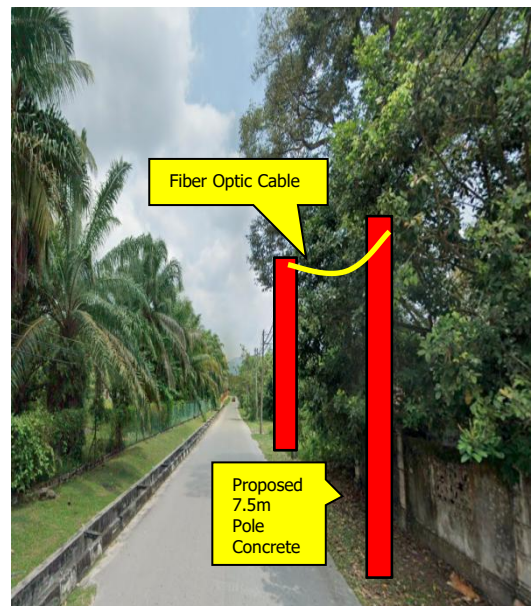
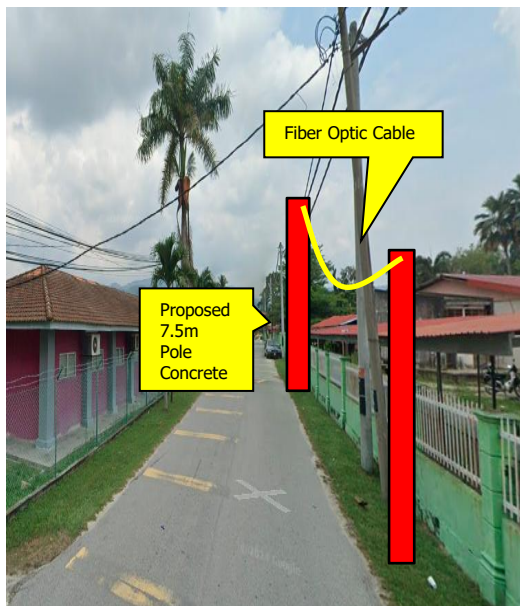
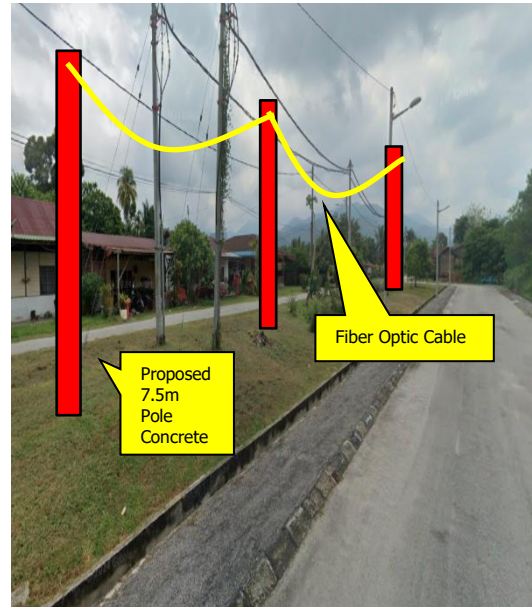
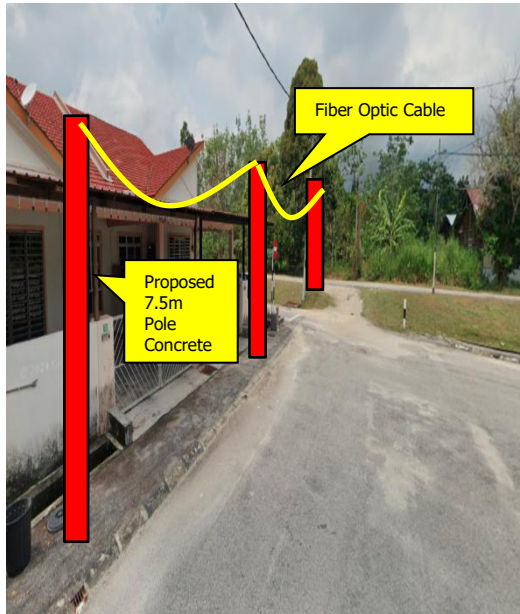


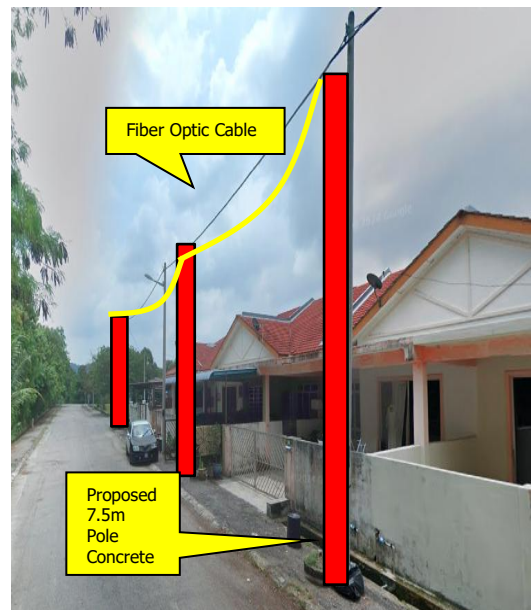
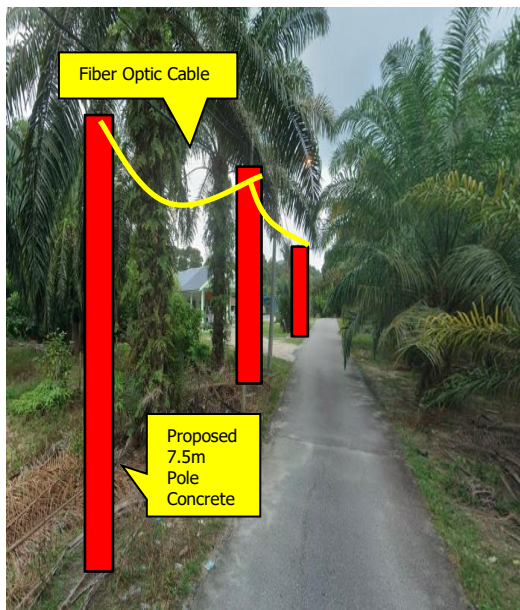
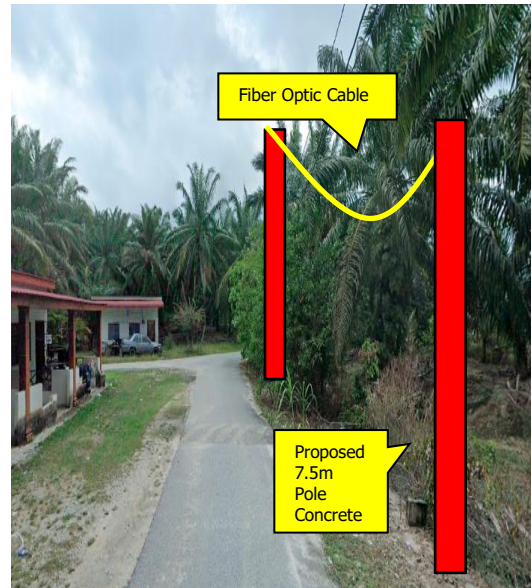
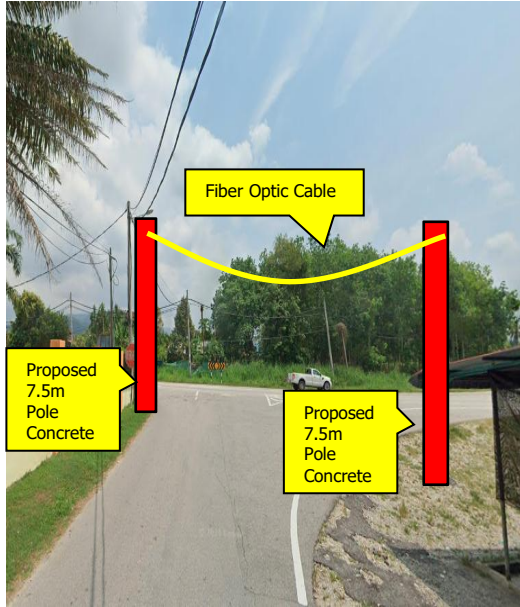
SUPPLY, INSTALLATION AND COMMISSIONING OF FTTX NETWORK INFRASTRUCTURE FOR ALLO TECHNOLOGY SDN BHD POP 2 PROJECT (D-SIDE) - PMU PRMS FOR AEE1032-SEKOLAH MENENGAH KEBANGSAAN RAJA SHAHRIMAN

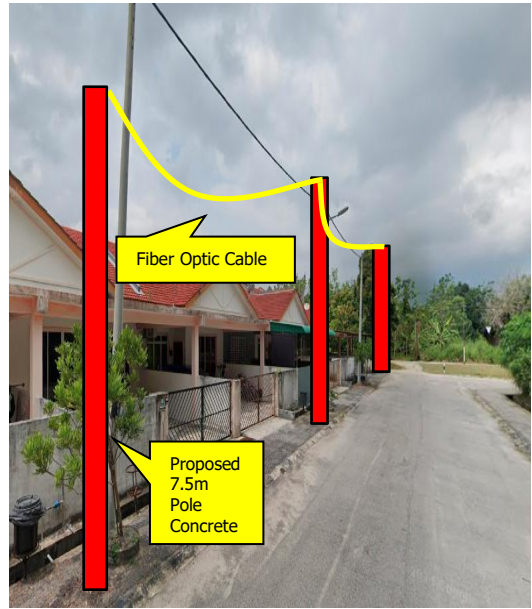
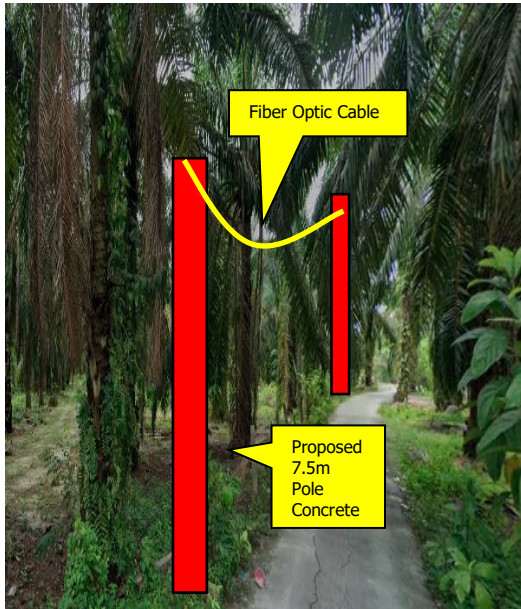


Proposed New Pole Coordinate					
No.	Pole Number	Distance (m)	Latitude	Longitude	Local Authority
39	T038	39	4.491779	100.786156	Majlis Perbandaran Manjung
40	T039	38	4.491450	100.786191	Majlis Perbandaran Manjung
41	T040	39	4.491107	100.786233	Majlis Perbandaran Manjung
42	T041	38	4.490764	100.786252	Majlis Perbandaran Manjung
43	T042	35	4.490425	100.786306	Majlis Perbandaran Manjung
44	T043	35	4.490152	100.786458	Majlis Perbandaran Manjung
45	T044	37	4.491662	100.785880	Majlis Perbandaran Manjung
46	T045	36	4.491521	100.785569	Majlis Perbandaran Manjung
47	T046	39	4.491368	100.785268	Majlis Perbandaran Manjung
48	T047	36	4.491284	100.784937	Majlis Perbandaran Manjung
49	T048	36	4.491233	100.784628	Majlis Perbandaran Manjung
50	T049	33	4.491213	100.784296	Majlis Perbandaran Manjung
51	T050	34	4.491184	100.784014	Majlis Perbandaran Manjung
52	T051	30	4.491159	100.783738	Majlis Perbandaran Manjung
53	T052	35	4.491461	100.784507	Majlis Perbandaran Manjung
54	T053	41	4.491766	100.784393	Majlis Perbandaran Manjung
55	T054	38	4.492096	100.784280	Majlis Perbandaran Manjung
56	T055	30	4.492285	100.784016	Majlis Perbandaran Manjung

4.0 SITE PHOTOS - PROPOSED NEW POLE







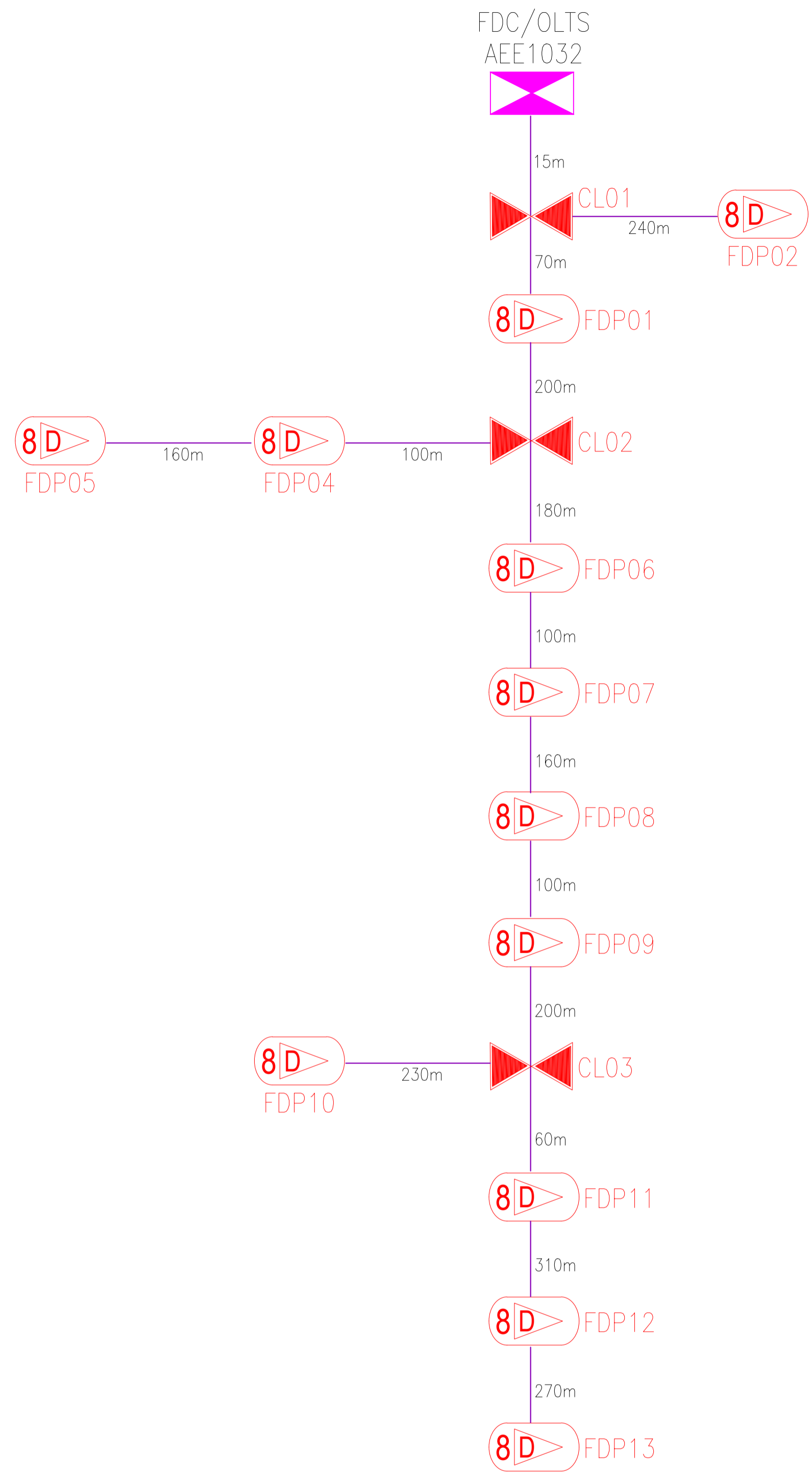


SUPPLY, INSTALLATION AND COMMISSIONING OF FTTX NETWORK INFRASTRUCTURE FOR ALLO TECHNOLOGY SDN BHD POP 2 PROJECT (D-SIDE) - PMU PRMS FOR AEE1032-SEKOLAH MENENGAH KEBANGSAAN RAJA SHAHRIMAN



6.0 3rd PARTIES DEPENDENCIES

NO	LOCAL COUNCIL / AUTHORITY	REMARK
1	Majlis Perbandaran Manjung	1920m
2	JKR Daerah Manjung	-



12C FOC	Installed 1:4 / 1:8 / 1:32 splitter	○	Installed Pole (9m)	1	s	Suspension	70	JB30	New Manhole (PIT)	Micro-Trenching (Meter)	MH1	MH NO.
24C FOC	2395m Installed Patch Cord	●	Installed Pole (7.5M)	55	t	Tension	100	C7	New Manhole(JRC7)	Temporary Infra (Meter)	TKS-1	Existing TNB Pole NO.
48C FOC	FDC	1	Installed Pole (6.7M)		⊗	Pole Ring	13		FDP Boundary	Loop / Coil (Meter)	P001	New Pole NO.
96C FOC	Closure	2	Existing TNB Pole		8D>	FDP with (1:8) splitter	13		HDD (Meter)	#	CL01	Closure NO.
144C FOC	Existing Closure	□	Installed Riser		□	Existing Manhole			Open Cut (Meter)	C01	DP1	FDP NO.

ACTUAL HOMEPASS : 120



KEY PLAN:

PROJECT OWNER:



KEMENTERIAN KOMUNIKASI DAN DIGITAL

MAIN CONTRACTOR:

SUB-CONTRACTOR:



ALLO TECHNOLOGY SDN BHD
Level 3, Left Wing,
College of Computer Science & Information Technology (CSIT)
UNITEN, 43000 Kajang, Selangor
TEL: 1 300-38-8000
FAX: (60) 3 8800 5221
E-MAIL : info@allo.my WEBSITE: HTTP://WWW.ALLO.MY

PROJECT TITLE:

**AEE1032
SEKOLAH KEBANGSAAN
RAJA SHAHRIMAN**

DRAWING TITLE:

SINGLE LINE DRAWING
AEE1032
SEKOLAH MENENGAH KEBANGSAAN
RAJA SHAHRIMAN

PROJECT PHASE:
POP 2

Design By : Dzulfakar	Date : 08/08/2024
Drawn By : Nadhirah	Scale : NOT TO SCALE
Checked By : Dzulfakar	Job Number : 1
DRAWING NUMBER : D-SIDE-AEE1032-SLD-01	Sheet : 1/1
THIS PRINT AND ITS COPYRIGHT ARE THE PROPERTY OF ALLO TECHNOLOGY SDN BHD	
Size : A3	