

- NOTES:
- ALL DIMENSIONS ARE IN METER.
 - BASIC PLANT LAYOUT IS FOR REFERENCE PURPOSE ONLY AND NOT FOR EXECUTION.
 - PLANT LAYOUT MAY UNDERGO CHANGES DURING EXECUTION WITH RESPECT TO SITE CONDITION.
 - LOCATION OF INVERTER TRANSFORMER STATION MAY CHANGE DURING DETAIL ENGINEERING.
 - TRACKERS MAY HAVE TO BE SHIFTED WITH RESPECT TO LIGHTNING RISK ASSESSMENT AND FINALIZED L.A. LAYOUT.

PIT DETAILS

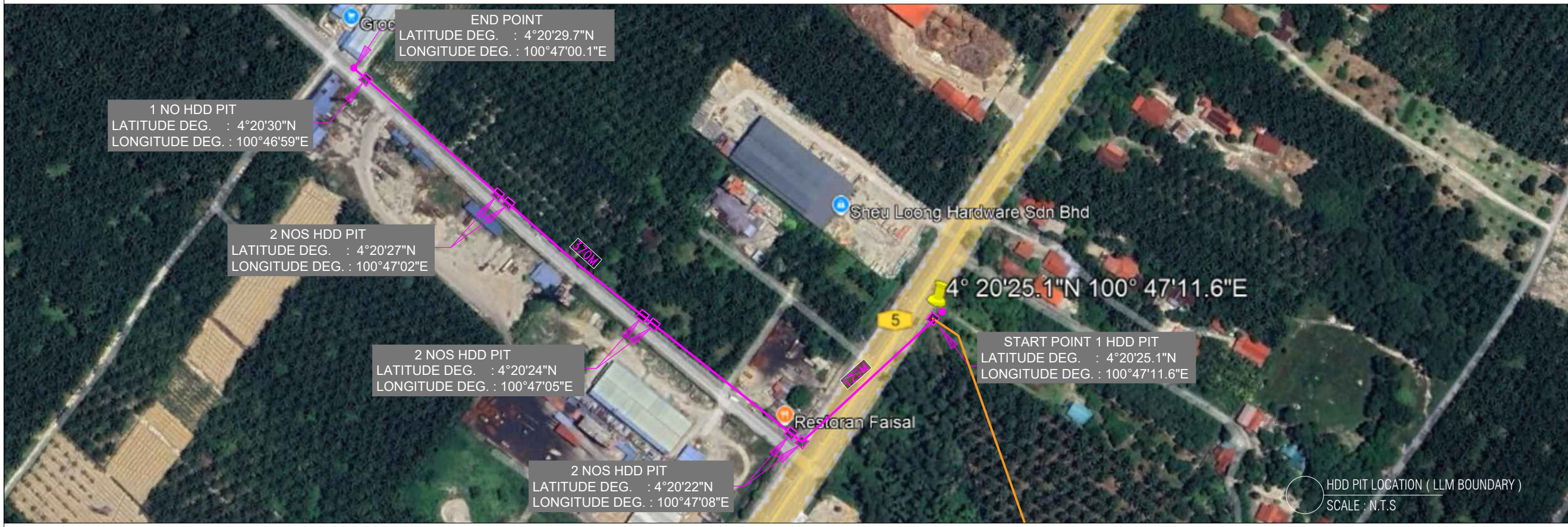
LENGTH	5 feet
WIDTH	2.5 feet
DEPTH	1.5m ~ 1.8m
No. Of Module	223748 NOS

KUDR PIT LOCATION :

PIT LOCATION	
1st PIT	4°20'22"N 100°47'08"E
2nd PIT	4°20'24"N 100°47'05"E
3rd PIT	4°20'27"N 100°47'02"E
END PIT	4°20'30"N 100°46'59"E

LEGEND :

	HDD ENTRY / EXIT PIT
	3 NOS 200MM DIA + 1 NO 110MM DIA HDPE PN10 PIPE LAID U/G
	OPEN CUT METHOD AND ALL ASSOCIATED ACCESSORIES FOR 4 CIRCUIT (PDT LAND)
	OPEN CUT METHOD AND ALL ASSOCIATED ACCESSORIES FOR 4 CIRCUIT (PRIVATE LAND)
	OPEN CUT METHOD AND ALL ASSOCIATED ACCESSORIES FOR 4 CIRCUIT (TNB ROW LAND)
	OPEN CUT METHOD AND ALL ASSOCIATED ACCESSORIES FOR 4 CIRCUIT (FROM SOLAR PARK SPPIF)



REV	DATE	DESCRIPTION	HM	ZUL
A	21/01/2026	FOR INFORMATION	HM	ZUL

DEVELOPER :

MANJUNG SOLAR PARK SDN. BHD.

DRAWING TITLE :

132kV CABLE ROUTE PLAN LAYOUT

PROJECT TITLE :

THE ENGINEERING, PROCUREMENT, CONSTRUCTION, AND COMMISSIONING (EPCC) OF THE SOLAR PHOTOVOLTAIC ENERGY GENERATING FACILITY, THE SPP INTERCONNECTION FACILITY, THE SPP INTERCONNECTOR AND THE SPP WORKS WITH ASSOCIATED WORKS WITH THE ESTABLISHED CAPACITY OF 99.99MWAC AT LOT 5766, LOT 8958 AND LOT 36070, MUKIM SITAWAN, DAERAH MANJUNG, PERAK FOR MANJUNG SOLAR PARK SDN BHD

DRAWN BY	CHECKED BY	CHECKED BY	ACKNOWLEDGED BY	SCALE	DATE	SIZE	REV.
HM	ZUL	DJ	AZZAN	N.T.S	21/01/26	A3	

CONTRACT NO :
DRAWING NO : DSB/PJT/DWG/MJG/132CR/201

THIS PRINT IS THE PROPERTY OF DITROLIC SDN BHD

EPCC CONTRACTOR :

DITROLIC ENERGY
NO.1, JALAN EKOPERNIAGAAN 1/15, TAMAN EKOPERNIAGAAN, 81100, JOHOR BHARU, MALAYSIA.
www.ditrolicenergy.com

- A - ISSUED FOR INFORMATION
- B - ISSUED FOR APPROVAL
- C - ISSUED FOR CONSTRUCTION
- D - ISSUED FOR AS-BUILT