

TECHNICAL PROPOSAL

POP2 ABD3066 SEKOLAH JENIS KEBANGSAAN (TAMIL) LADANG GULA (D-SIDE)

Company Name	:	SEGALA DELIMA (M) SDN BHD
Company Address	:	No. 8, Jalan Ampang Baru 6B, Pusat Perdagangan Baru, 31350 Ipoh, Perak
Prepared By	:	Nasrohaizan Bin Mustaffa
Date	:	7/2/2025



Point A



Point B

Starting Point

Site / Boundary Name	:	SEKOLAH JENIS KEBANGSAAN (TAMIL) LADANG GULA
District	:	KUALA GULA
Postcode	:	34350
State	:	Perak
GPS Coordinate	:	4.956335 , 100.467187
LRD	:	A

End Point

Site / Boundary Name	:	KAMPUNG TERSUSUN KUALA GULA
Address	:	JALAN BERSATU 1
District	:	KUALA GULA
Postcode	:	34350
State	:	Perak
GPS Coordinate	:	4.939168 , 100.468051
LRD	:	B

1.0 WORK SUMMARY

NO	PROPOSED DISTANCE AND METHOD	UNIT	QUANTITY
1	Horizontal Directional Drilling (HDD)	m	0
2	Carriage Way Open Trench(CW)	m	0
3	Grass Verge Open Trenching (GV)	m	0
4	Micro Trenching (MT)	m	0
Total			0

NO	OTHER INFORMATION	UNIT	QUANTITY
1	Installation of Short Span ADSS Fiber Cables	m	2990
2	Install New Pole	ea	96
3	Install New JRC7 Manhole	ea	0
4	Install GI Riser 100mm	ea	0
5	Install Fiber Distribution Point and Closure (Splicing, Termination and Testing)	ea	15
6	Estimated Time Required for Completion	days	30

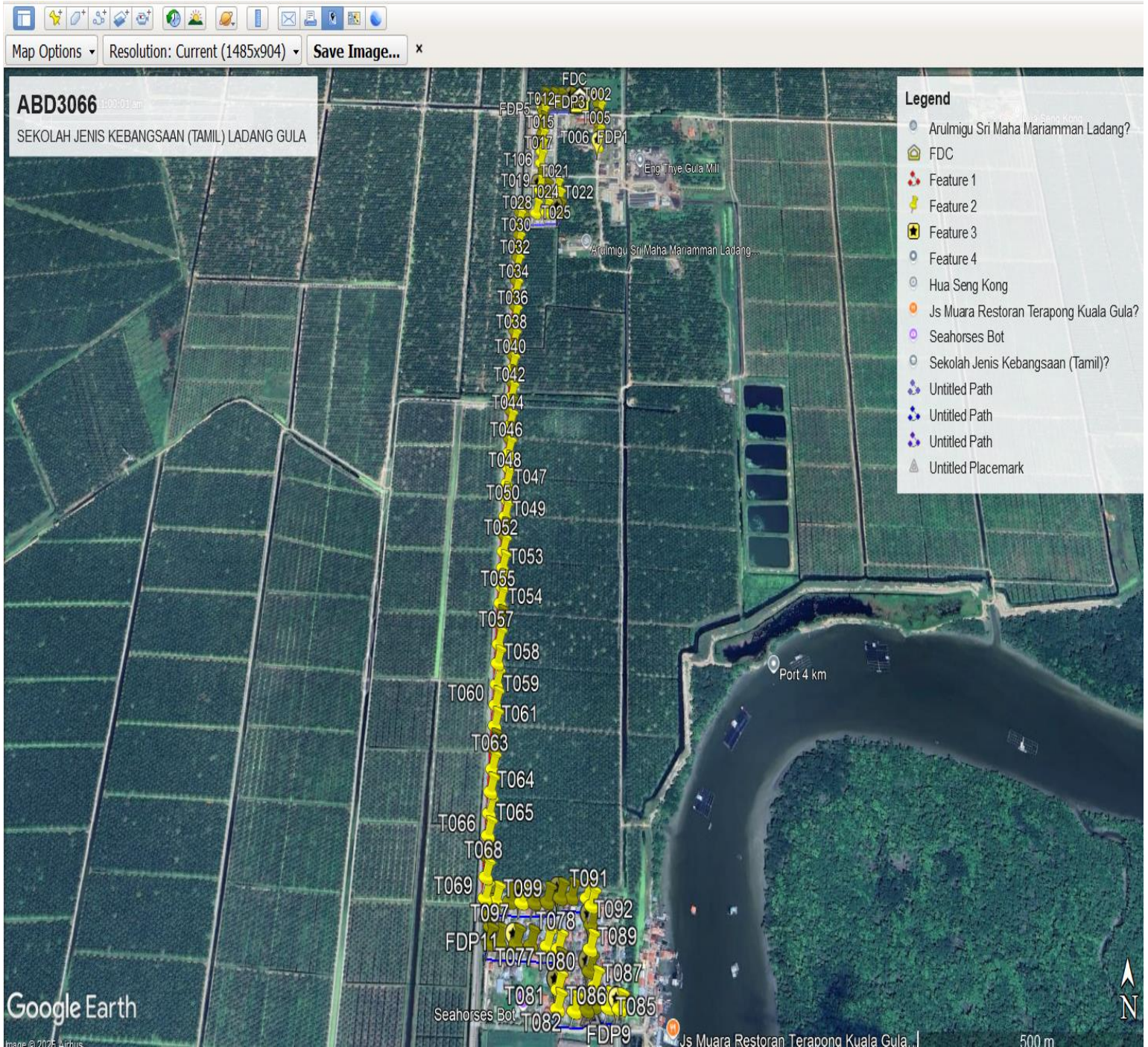
2.0 LOCAL AUTHORITY SUMMARY

Daerah Batu Gajah

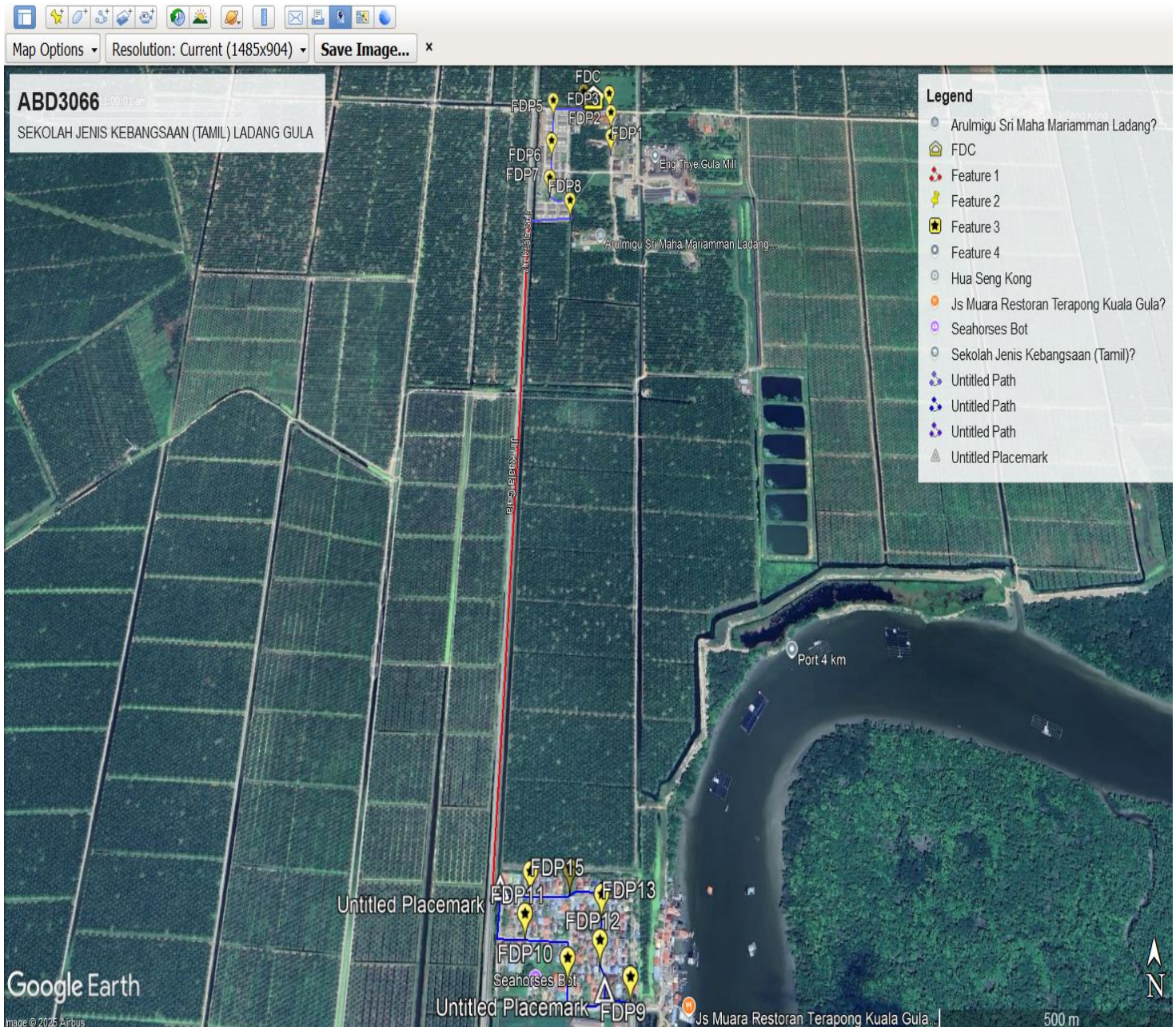
NO	ITEMS	Owner	Quantity	Distance (m)
1	HDD	JKR	-	-
		Majlis	-	-
		Estate / Private Land	-	-
2	New Pole	JKR	43	1420
		Majlis	53	1570
		Estate / Private Land	-	-
Total Distance (m)				2990

3.0 SITE PLAN (KMZ)

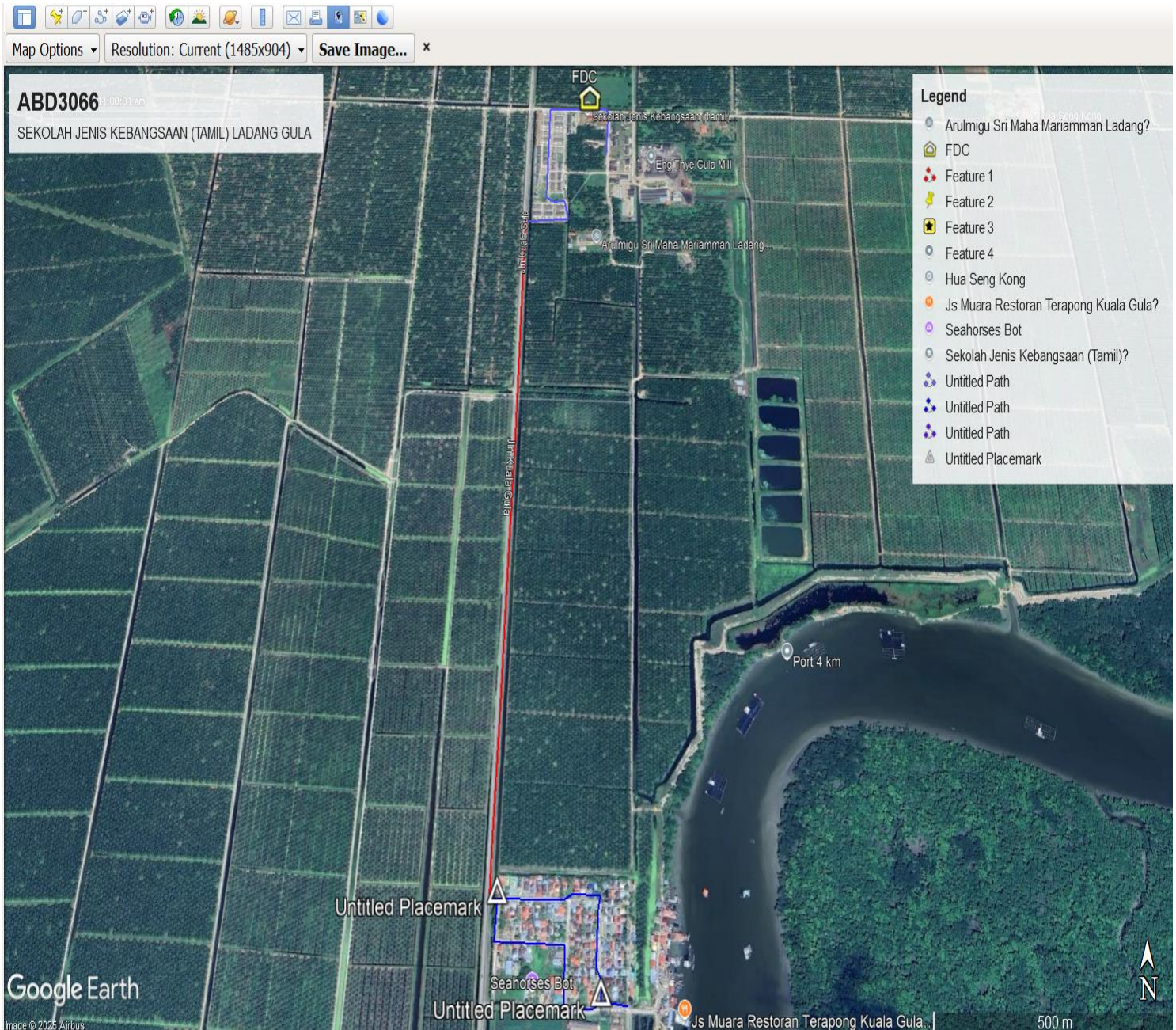
3.1 Overview Site Area (Propose New Pole)



3.2 Proposed FDP and Closure



3.3 Site Plan - KMZ Routing (All Local Authority)



Red Colour - JKR Road
Blue Colour - Majlis Road

4.0 PROPOSED NEW MANHOLE

Proposed New Manhole Coordinate					
No.	Manhole Number	Distance (m)	Latitude	Longitude	Local Authority
1	MH01	-	-	-	-
2	MH02	-	-	-	-

4.1 PROPOSED NEW POLE

Proposed New Pole Coordinate					
No.	Pole Number	Distance (m)	Latitude	Longitude	Local Authority
0	T000	35m	4.956292	100.467417	Tanah Persendirian
1	T001	35m	4.956234	100.467852	Tanah Persendirian
2	T002	35m	4.955970	100.467882	Tanah Persendirian
3	T003	35m	4.955696	100.467879	Tanah Persendirian
4	T004	35m	4.955526	100.467880	Tanah Persendirian
5	T005	35m	4.955351	100.467852	Tanah Persendirian
6	T006	35m	4.955125	100.467850	Tanah Persendirian
7	T007	35m	4.956294	100.467129	Tanah Persendirian
8	T008	35m	4.956292	100.466806	Tanah Persendirian
9	T009	35m	4.956308	100.466601	Tanah Persendirian
10	T010	35m	4.956316	100.466360	Tanah Persendirian
11	T011	35m	4.956059	100.466351	Tanah Persendirian
12	T012	35m	4.955862	100.466350	Tanah Persendirian
13	T013	35m	4.955665	100.466342	Tanah Persendirian
14	T014	35m	4.955467	100.466337	Tanah Persendirian
15	T015	35m	4.955249	100.466333	Tanah Persendirian
16	T016	35m	4.955007	100.466325	Tanah Persendirian
17	T017	35m	4.954714	100.466310	Tanah Persendirian
18	T018	35m	4.954196	100.466287	Tanah Persendirian
19	T019	35m	4.954011	100.466296	Tanah Persendirian
20	T020	35m	4.953934	100.466479°	Tanah Persendirian
21	T021	35m	4.953962	100.466752	Tanah Persendirian
22	T022	35m	4.953710	100.466808	Tanah Persendirian
23	T023	35m	4.953454	100.466831	Tanah Persendirian
24	T024	35m	4.953447	100.466486	Tanah Persendirian
25	T025	35m	4.953427	100.466217	Tanah Persendirian
26	T026	35m	4.953422	100.465927	Tanah Persendirian
27	T027	35m	4.953442	100.465808	JKR Daerah Kerian
28	T028	35m	4.953179	100.465791	JKR Daerah Kerian
29	T029	35m	4.952909	100.465787	JKR Daerah Kerian
30	T030	35m	4.952640	100.465783	JKR Daerah Kerian
31	T031	35m	4.952361	100.465778	JKR Daerah Kerian
32	T032	35m	4.952109	100.465772	JKR Daerah Kerian

33	T033	35m	4.951826	100.465760	JKR Daerah Kerian
34	T034	35m	4.951558	100.465757	JKR Daerah Kerian
35	T035	35m	4.951254°	100.465756	JKR Daerah Kerian
36	T036	35m	4.950958	100.465751	JKR Daerah Kerian
37	T037	35m	4.950698	100.465755	JKR Daerah Kerian
38	T038	35m	4.950415	100.465740	JKR Daerah Kerian
39	T039	35m	4.950162	100.465733	JKR Daerah Kerian
40	T040	35m	4.949877	100.465729	JKR Daerah Kerian
41	T041	35m	4.949609	100.465731	JKR Daerah Kerian
42	T042	35m	4.949312	100.465726	JKR Daerah Kerian
43	T043	35m	4.949032	100.465719	JKR Daerah Kerian
44	T044	35m	4.948733	100.465712	JKR Daerah Kerian
45	T045	35m	4.948458	100.465704	JKR Daerah Kerian
46	T046	35m	4.948171	100.465696	JKR Daerah Kerian
47	T047	35m	4.947869	100.465695	JKR Daerah Kerian
48	T048	35m	4.947560	100.465683	JKR Daerah Kerian
49	T049	35m	4.947256	100.465676	JKR Daerah Kerian
50	T050	35m	4.946927	100.465664	JKR Daerah Kerian
51	T051	35m	4.946585	100.465656	JKR Daerah Kerian
52	T052	35m	4.946278	100.465646	JKR Daerah Kerian
53	T053	35m	4.945981	100.465646	JKR Daerah Kerian
54	T054	35m	4.945641	100.465639	JKR Daerah Kerian
55	T055	35m	4.945342	100.465618	JKR Daerah Kerian
56	T056	35m	4.944994	100.465628	JKR Daerah Kerian
57	T057	35m	4.944630	100.465609	JKR Daerah Kerian
58	T058	35m	4.944307	100.465598	JKR Daerah Kerian
59	T059	35m	4.943963	100.465593	JKR Daerah Kerian
60	T060	35m	4.943628	100.465584	JKR Daerah Kerian
61	T061	35m	4.943293	100.465584	JKR Daerah Kerian
62	T062	35m	4.942945	100.465571	JKR Daerah Kerian
63	T063	35m	4.942611	100.465561	JKR Daerah Kerian
64	T064	35m	4.942261	100.465537	JKR Daerah Kerian
65	T065	35m	4.941935	100.465526	JKR Daerah Kerian
66	T066	35m	4.941603	100.465520	JKR Daerah Kerian
67	T067	35m	4.941308	100.465506	JKR Daerah Kerian
68	T068	35m	4.940999	100.465506	JKR Daerah Kerian
69	T069	35m	4.940699	100.465501	JKR Daerah Kerian
70	T070	35m	4.940653	100.465638	Majlis Daerah Kerian
71	T071	35m	4.940381	100.465715	Majlis Daerah Kerian
72	T072	35m	4.940206	100.465708	Majlis Daerah Kerian
73	T073	35m	4.940075	100.465701	Majlis Daerah Kerian
74	T074	35m	4.940077	100.465922	Majlis Daerah Kerian
75	T075	35m	4.940057	100.466137	Majlis Daerah Kerian
76	T076	35m	4.940043	100.466420	Majlis Daerah Kerian
77	T077	35m	4.940034	100.466739	Majlis Daerah Kerian

78	T078	35m	4.939997	100.466957	Majlis Daerah Kerian
79	T079	35m	4.939737	100.466959	Majlis Daerah Kerian
80	T080	35m	4.939503	100.467033	Majlis Daerah Kerian
81	T081	35m	4.939258	100.467032	Majlis Daerah Kerian
82	T082	35m	4.939188	100.468124	Majlis Daerah Kerian
83	T083	35m	4.939211	100.467910	Majlis Daerah Kerian
84	T084	35m	4.939236	100.467669	Majlis Daerah Kerian
85	T085	35m	4.939374	100.467645	Majlis Daerah Kerian
86	T086	35m	4.939579	100.467652	Majlis Daerah Kerian
87	T087	35m	4.939606	100.467569	Majlis Daerah Kerian
88	T088	35m	4.939878	100.467655	Majlis Daerah Kerian
89	T089	35m	4.940385	100.467676	Majlis Daerah Kerian
90	T090	35m	4.940701	100.467701	Majlis Daerah Kerian
91	T091	35m	4.940703	100.467580	Majlis Daerah Kerian
92	T092	35m	4.940731	100.467106	Majlis Daerah Kerian
93	T093	35m	4.940644	100.466935	Majlis Daerah Kerian
94	T094	35m	4.940653	100.466508	Majlis Daerah Kerian
95	T095	35m	4.940642	100.466222	Majlis Daerah Kerian
96	T096	35m	4.940688	100.465734	Majlis Daerah Kerian

Type	7.5m	9m	Total
No of pole	96	0	96

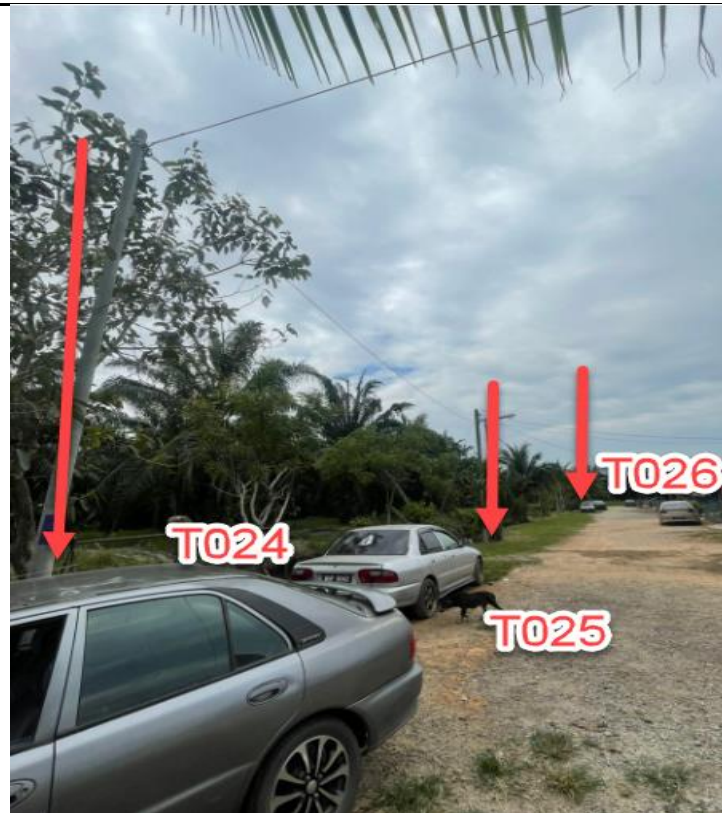
**5.0 SITE PHOTOS - PROPOSED HDD AND NEW MANHOLE
(N/A)**

6.0 SITE PHOTOS - PROPOSED NEW POLE

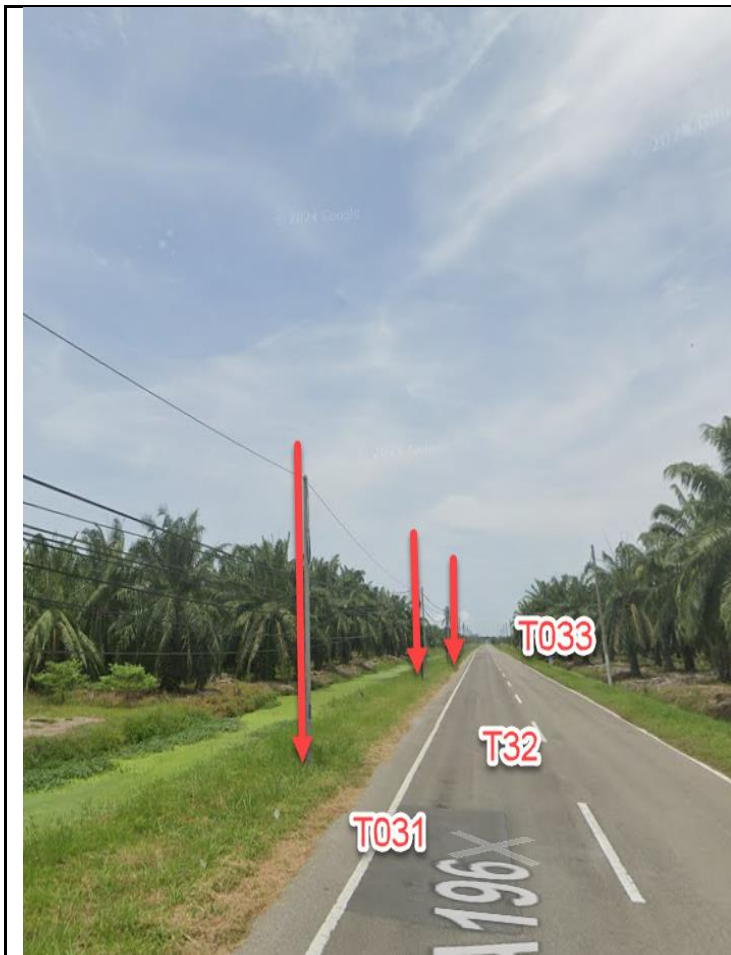


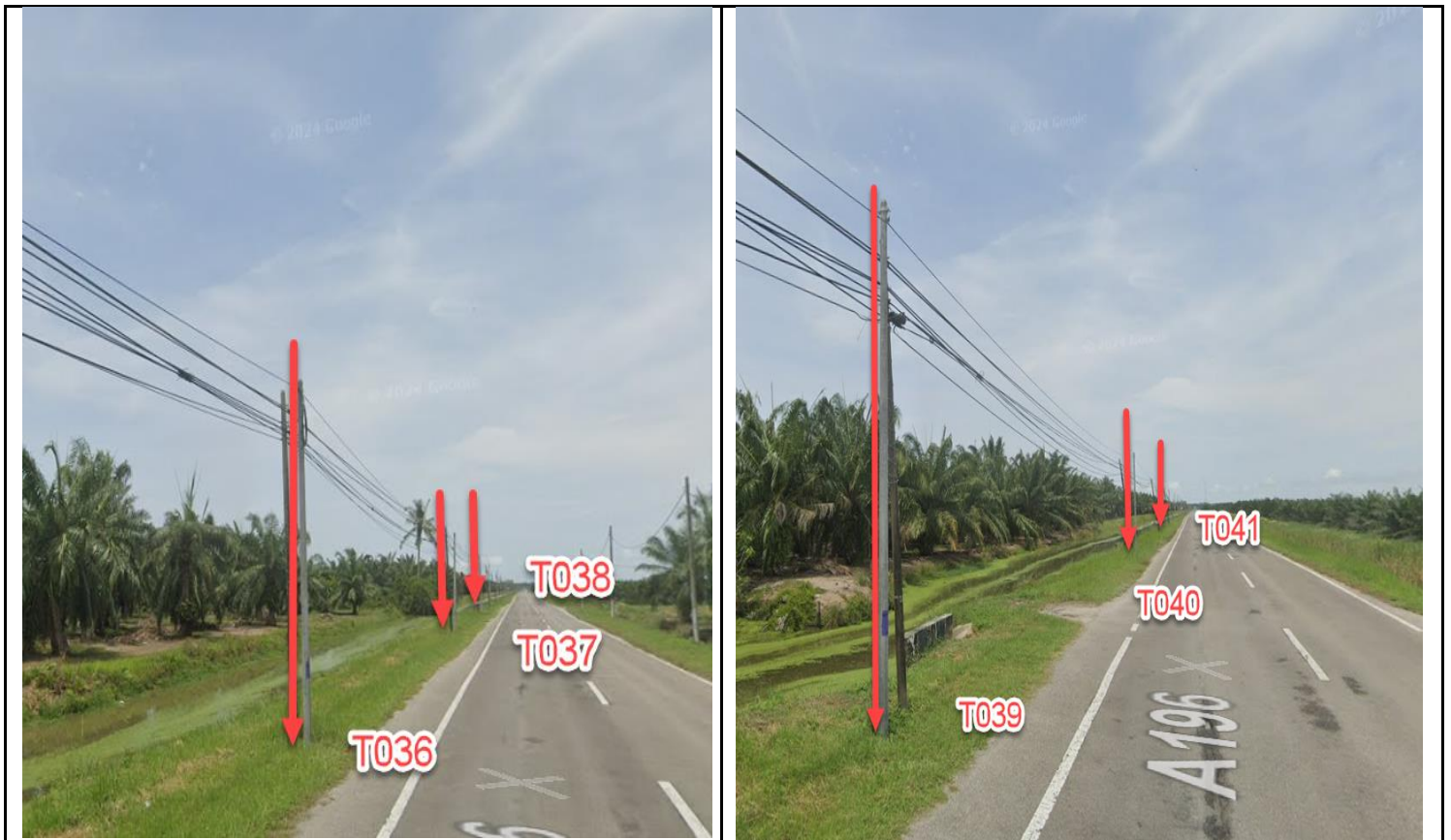


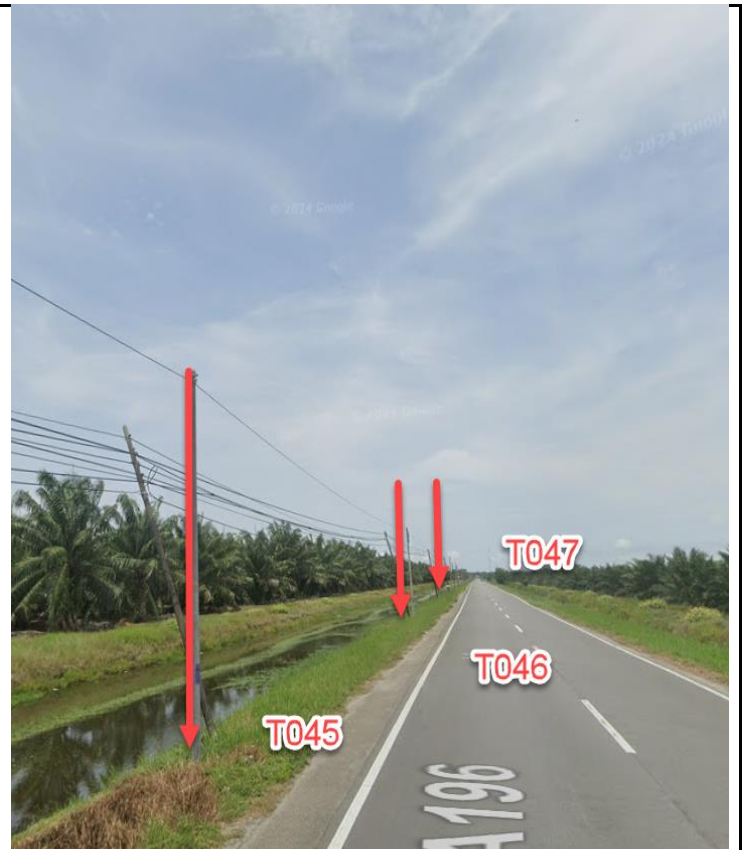
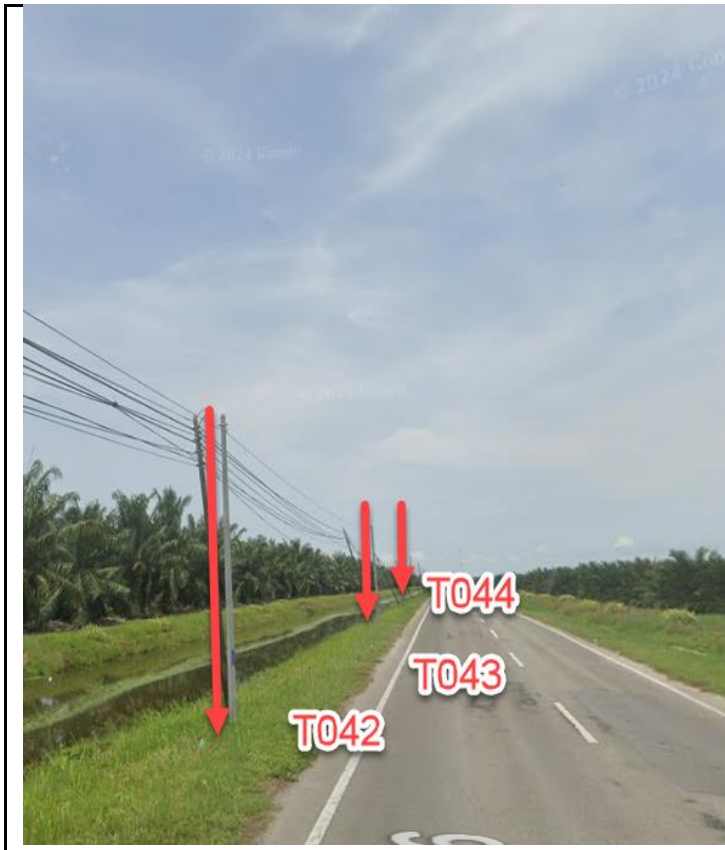


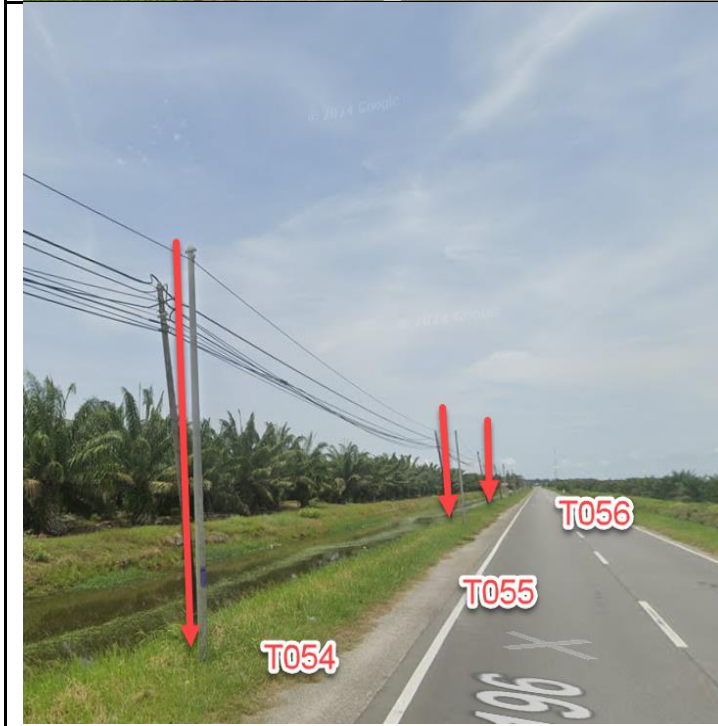
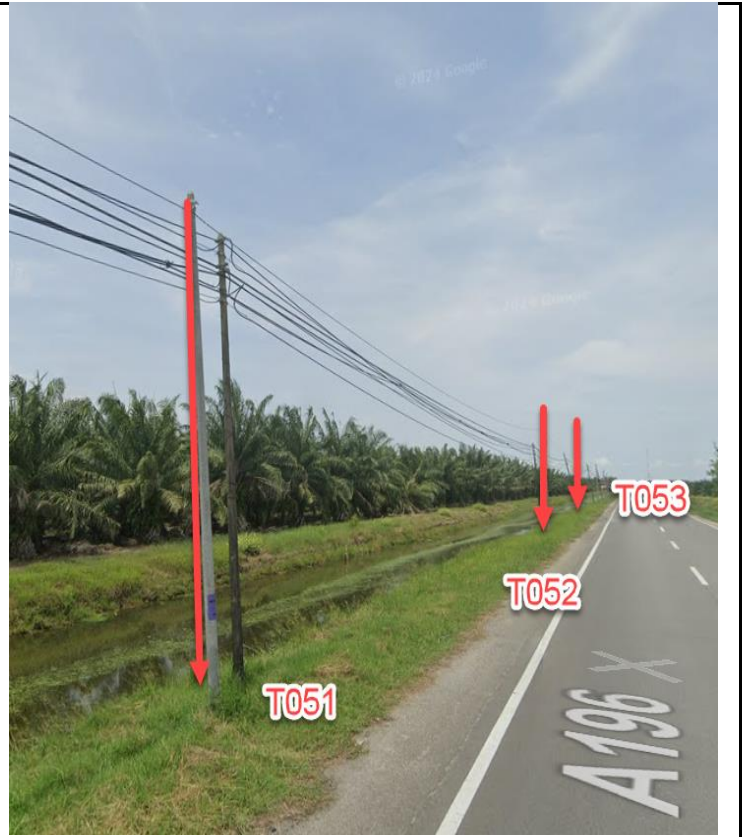
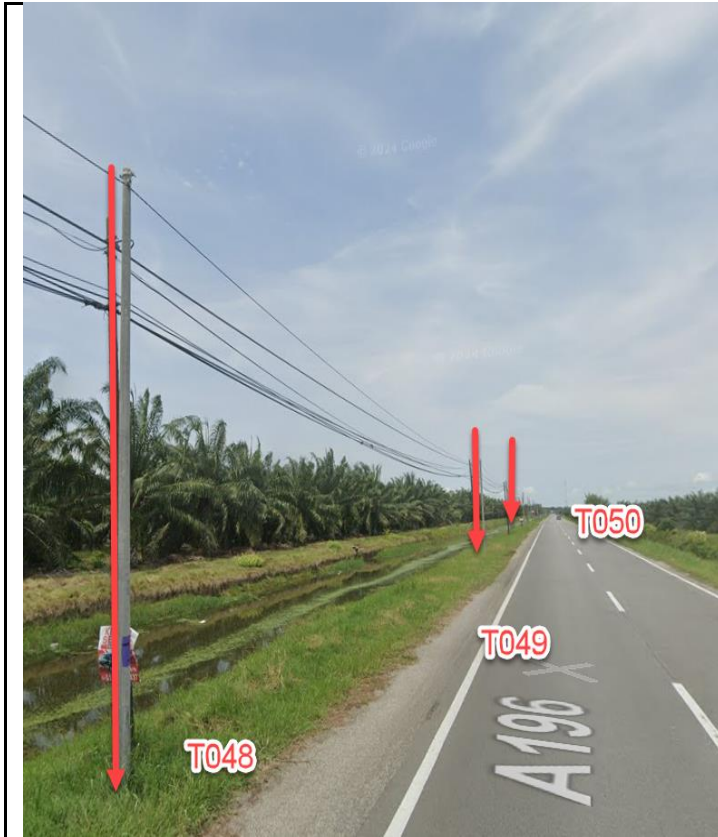


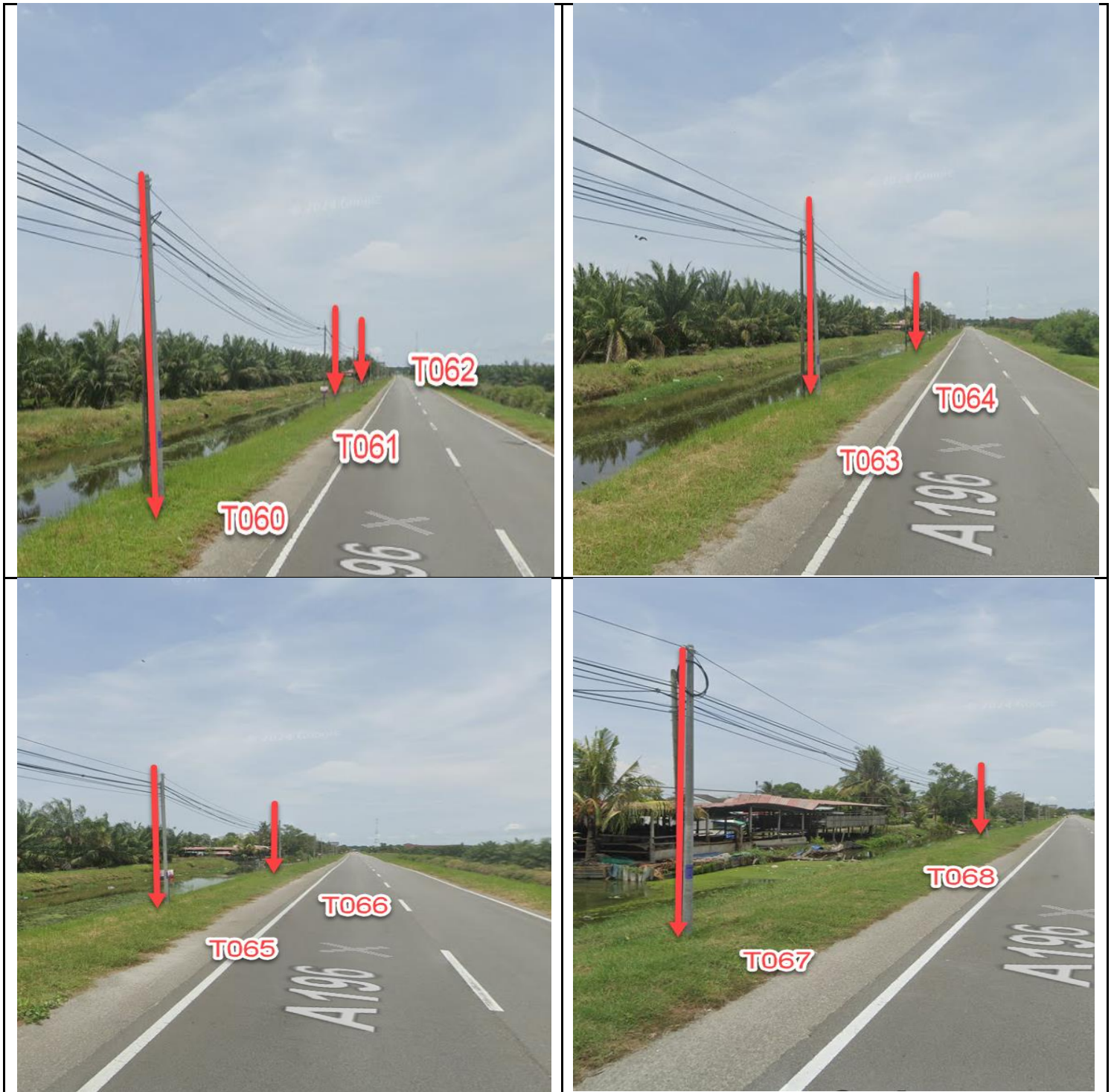


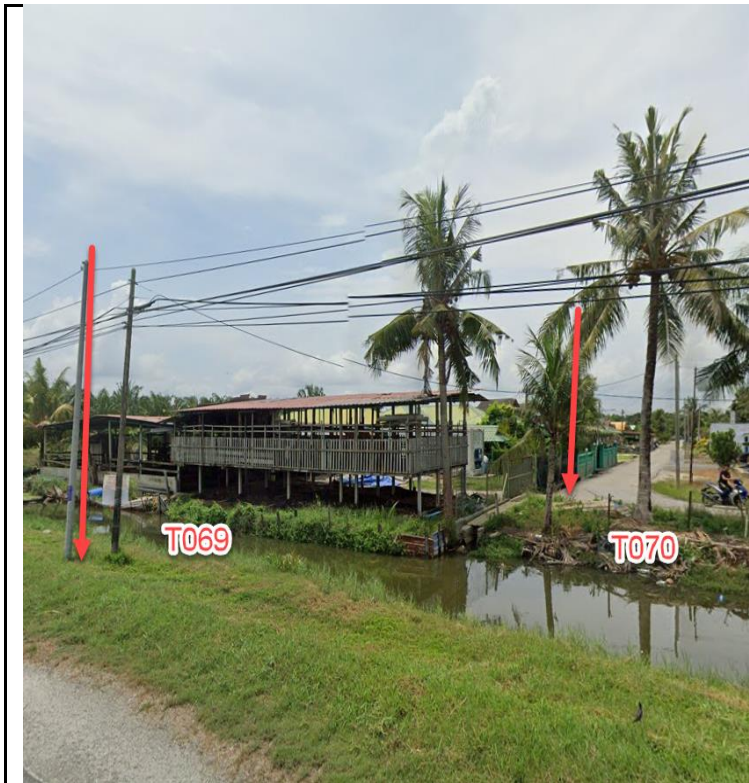




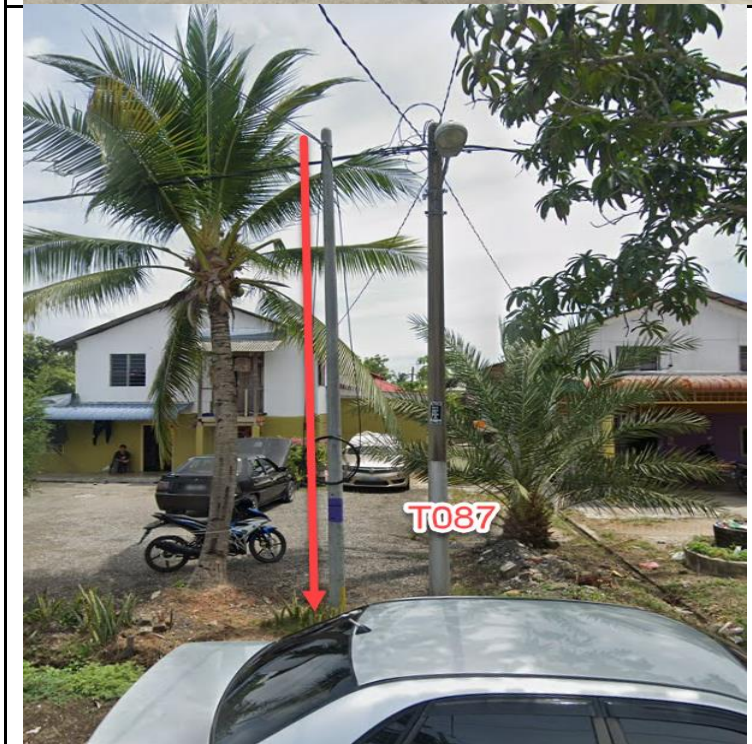
















NO	LOCAL COUNCIL / AUTHORITY	REMARK
1	Majlis Daerah Kerian	1570m
2	JKR Daerah Kerian	1420m

