



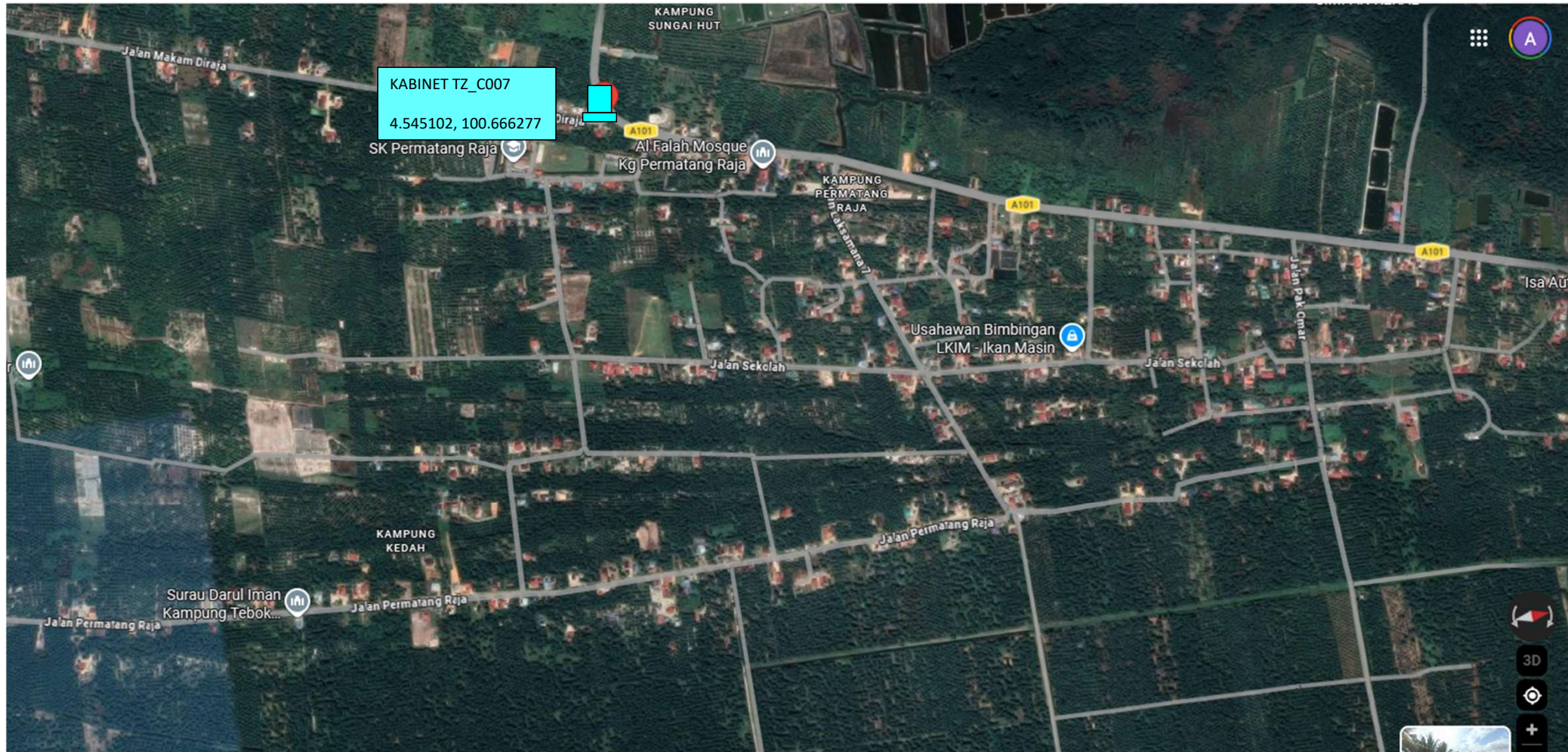
# Technical Proposal SI for TM Project



<b>Project Description:</b>	USP MC2021 FTTH (TZ) KAMPUNG MATANG RAJA
<b>Project Number:</b>	TMKA/260004
<b>TM Node</b>	TZ (TRONG)
<b>Region</b>	Northern
<b>NE ID</b>	TZ_C007
<b>Total FTTH Ports</b>	32
<b>Total Property</b>	
<b>PF (%)</b>	
<b>RFSI Date</b>	30 MAY 2026
<b>GPS Coordinate</b>	4.549711, 100.668195

<b>Prepared by:</b>	MUHD ALIF JAZLI BIN JOHARI
<b>Company Name:</b>	PROSERINS TECHNOLOGY SDN BHD
<b>Date:</b>	12 JUN 2026
<b>TP Revision:</b>	3

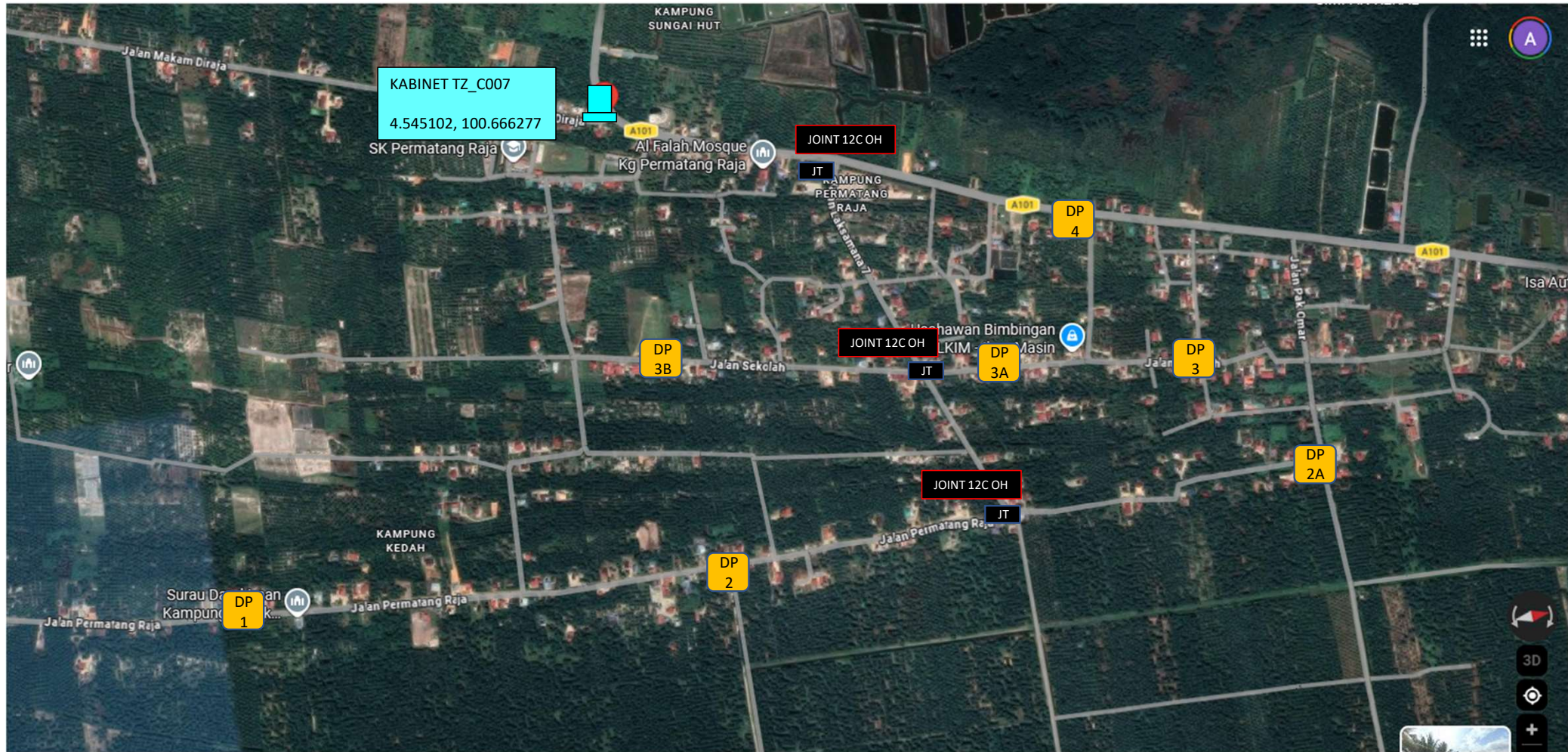
## 1.1 FDC Location



Legend:



## 2.1 FDP and FOSC Location Plan



Legend:



FDC



FDP

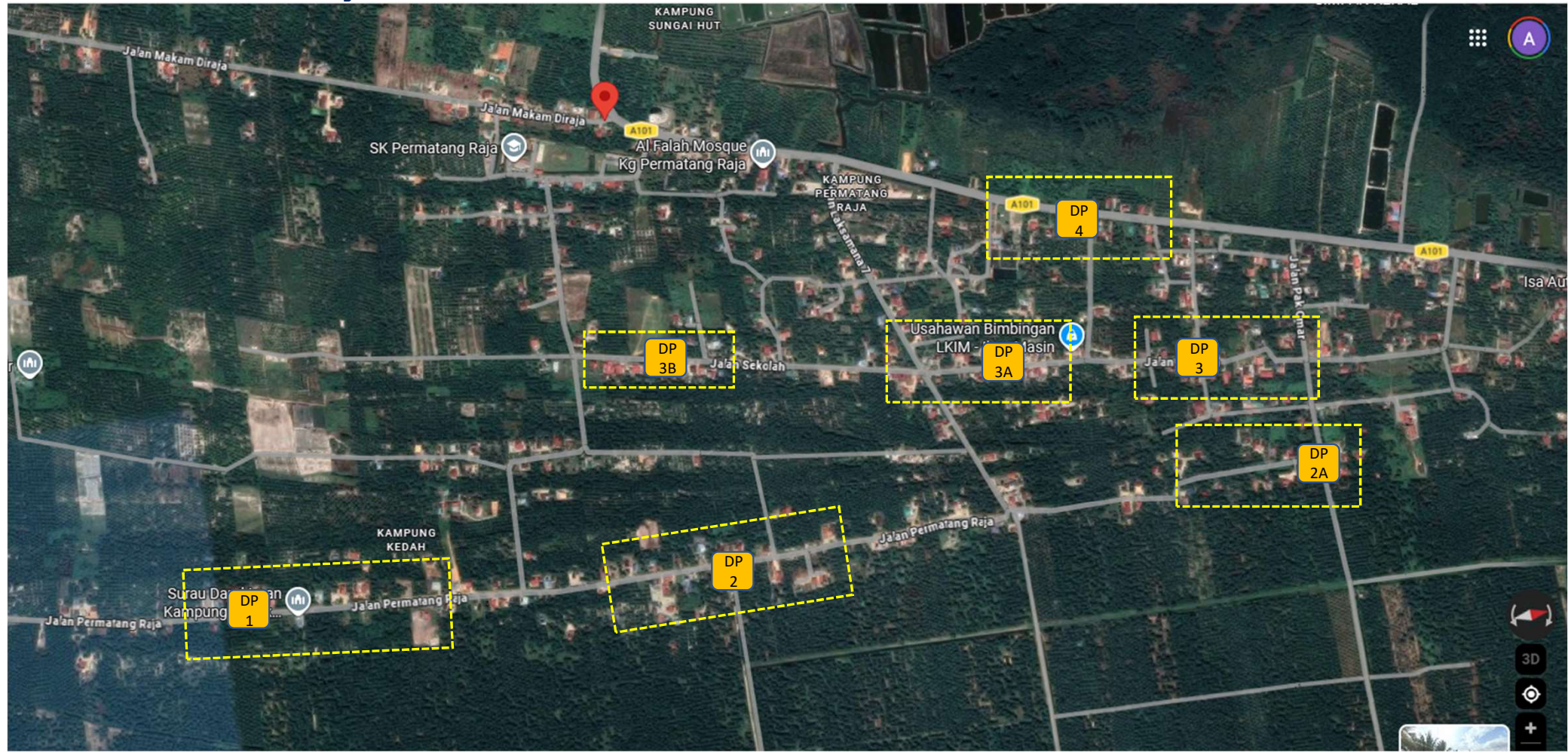


FOSC



POLE

## 2.2 FDP Boundary



Legend:



FDC



FDP



FOSC



POLE

## 2.3 Cable Plan



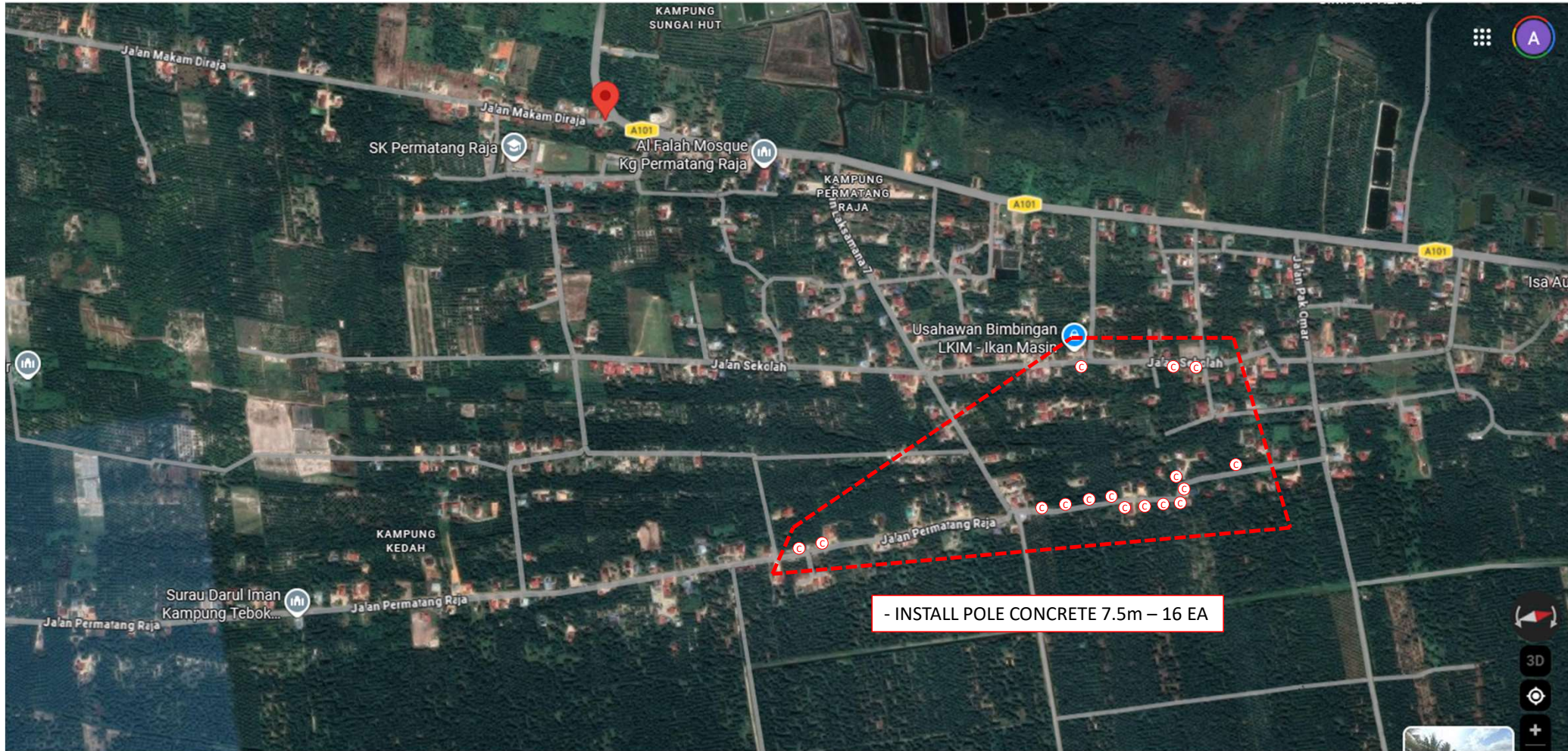
## 2.5 FDP Details – Normal Project

No	Info	Type	Road/Location	Ports	Properties Covered	Remark
1	DP1	ON POLE	Jalan Permatang Raja, Kg Permatang Raja, 34900 Pantai Remis, Perak	8	8	
2	DP2	ON POLE	Jalan Permatang Raja, Kg Permatang Raja, 34900 Pantai Remis, Perak	8	12	
3	DP3	ON POLE	Jalan Sekolah, Kg Permatang Raja, 34900 Pantai Remis, Perak	8	13	
4	DP4	ON POLE	Jalan Sekolah, Kg Permatang Raja, 34900 Pantai Remis, Perak	8	8	

## 2.6 Tie FDP Details – Normal Project

No	Info	DP Type	Road/Location	Ports	Properties Covered	Guide
1	DP2A	On Pole	Jalan Permatang Raja, Kg Permatang Raja, 34900 Pantai Remis, Perak	4	4	
2	DP3A	On Pole	Jalan Sekolah, Kg Permatang Raja, 34900 Pantai Remis, Perak	4	4	
3	DP3B	On Pole	Jalan Sekolah, Kg Permatang Raja, 34900 Pantai Remis, Perak	4	4	

### 3.1 New Pole Plan



Legend:



FDC



FDP



FOSC



POLE

### 3.2 New Pole details

No	POLE ID	Pole Type	GPS Coordinate
1	1	Concrete Pole 7.5m	4°33'13.76"N 100°40'24.46"E
2	2	Concrete Pole 7.5m	4°33'21.12"N 100°40'26.14"E
3	3	Concrete Pole 7.5m	4°33'22.09"N 100°40'26.41"E
4	4	Concrete Pole 7.5m	4°32'49.50"N 100°40'33.77"E
5	5	Concrete Pole 7.5m	4°32'51.78"N 100°40'33.76"E
6	6	Concrete Pole 7.5m	4°33'7.60"N 100°40'34.24"E
7	7	Concrete Pole 7.5m	4°33'9.63"N 100°40'34.60"E
8	8	Concrete Pole 7.5m	4°33'11.43"N 100°40'34.73"E
9	9	Concrete Pole 7.5m	4°33'13.16"N 100°40'34.78"E
10	10	Concrete Pole 7.5m	4°33'14.00"N 100°40'35.16"E
11	11	Concrete Pole 7.5m	4°33'15.57"N 100°40'35.36"E
12	12	Concrete Pole 7.5m	4°33'16.93"N 100°40'35.66"E
13	13	Concrete Pole 7.5m	4°33'18.05"N 100°40'35.80"E
14	14	Concrete Pole 7.5m	4°33'18.60"N 100°40'35.19"E
15	15	Concrete Pole 7.5m	4°33'18.48"N 100°40'34.54"E
16	16	Concrete Pole 7.5m	4°33'23.16"N 100°40'34.49"E

### 3.3 New Pole Illustration



### 3.3 New Pole Illustration

