

USP MC2021 FTTH (TZ) KAMPUNG MATANG RAJA

Revision Record

Revision No.	Description Of Change	Author	Effective Date
0	New Document	1. Haziq Khalid	July 2022

Technical Proposal for TM Project



Project Description:	USP MC2021 FTTH (TZ) KAMPUNG MATANG RAJA
Project Number:	TMKA/260004
TM Node	TZ (TRONG)
Region	Northern
NE ID	TZ_C007
Total FTTH Ports	32
Total Property	
PF (%)	
RFSI Date	30 MAY 2026
GPS Coordinate	4.549711, 100.668195

Prepared by:	MUHD ALIF JAZLI BIN JOHARI
Company Name:	PROSERINS TECHNOLOGY SDN BHD
Date:	15 APRIL 2026
TP Revision:	1

Contents

- 1.0 **FDC information**
 - 1.1 FDC Boundary
 - 1.2 FDC Details and Illustration

- 2.0 **FDP information**
 - 2.1 FDP and FOOSC Location
 - 2.2 FDP Boundary
 - 2.3 Cable Plan
 - 2.4 Spur Information
 - 2.5 FDP details
 - 2.6 Tie FDP details

- 3.0 **New Pole information**
 - 3.1 Pole plan
 - 3.2 Pole details
 - 3.3 Illustration

- 4.0 **Material Specification**
 - 4.1 Fiber Accessories - FDC/Mini FDC/FDP/ODF
 - 4.2 Civil Accessories – Manhole/Pole

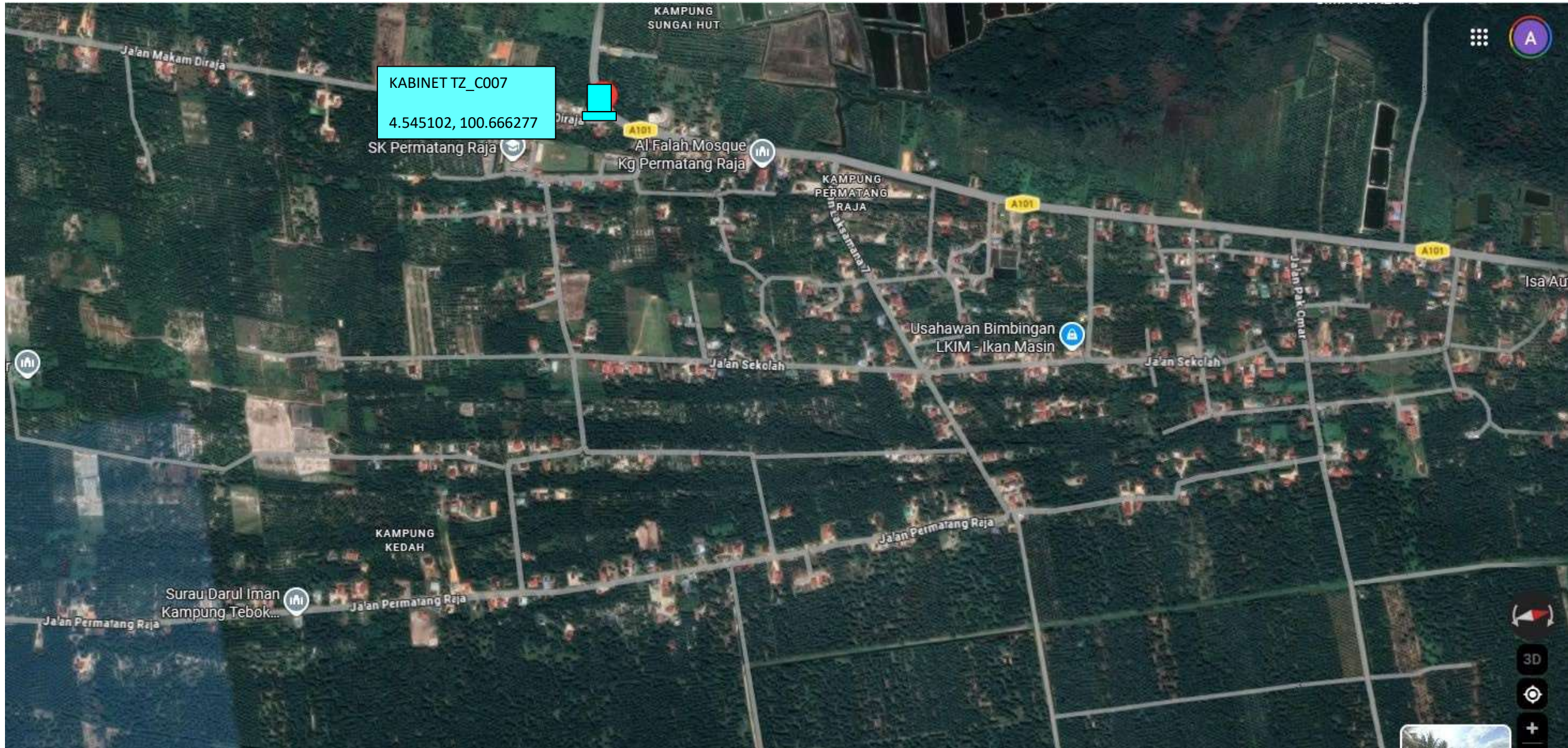
- 5.0 **Costing & BOQ**
 - 5.1 Project BOQ
 - 5.2 Costing

MATRIX REQUIREMENT FOR PROJECT

NO	Item	Detail Item	Remark	TP Check list					
				FTTH >1 DP	FTTH 1 FDP	Add DP / Tie DP	NID/5G	Civil	Main FOC
1	Cabinet location	Boundary	Polygon on Map showing area covered by FDC	C	C	NR	NR	NR	NR
		Detail Illustration	Illustration showing FDP location on picture, table with detail address, latlong	C	C	C	C	NR	NR
2	Cable Plan	On Map	Cable Plan, ID, Distance, Route, Distance, Joint Location illustration on map	C	C	C	C	NR	C
		SLD	Cable Plan	C	NR	NR	NR	NR	NR
3	FDP	Detail FDP/Tie DP	Table with FDP & Tie DP Detail	C	C	C	NR	NR	NR
		FDP, Tie DP Boundary	Polygon on Map for landed or Building image for Highrise showing area covered by each FDP	C	C	C	NR	NR	NR
4	Pole	Plan	Location and quantity on Map	C	C	C	C	C	C
		Illustration	Illustration showing Pole location on picture, table with detail pole type, latlong	C	C	C	C	C	C
5	Civil	Plan	Location and quantity on Map	C	C	C	C	C	C
		Illustration	Illustration showing civil location on picture, table with detail address, latlong	C	C	C	C	C	C
		Civil Manhole Detail	Table with Manhole Detail	C	C	C	C	C	C
6	BOQ & BOM	Detail BOQ	Detail PU item related to project. Show – PU number, quantity and costDetail	C	C	C	C	C	C
		Detail BOM*	Material related to project	C	C	C	C	C	C
7	Costing		Overall cost	C	C	C	C	C	C

*CNC Lite only

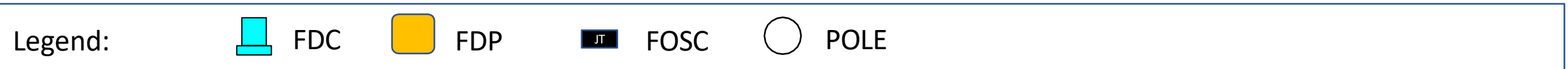
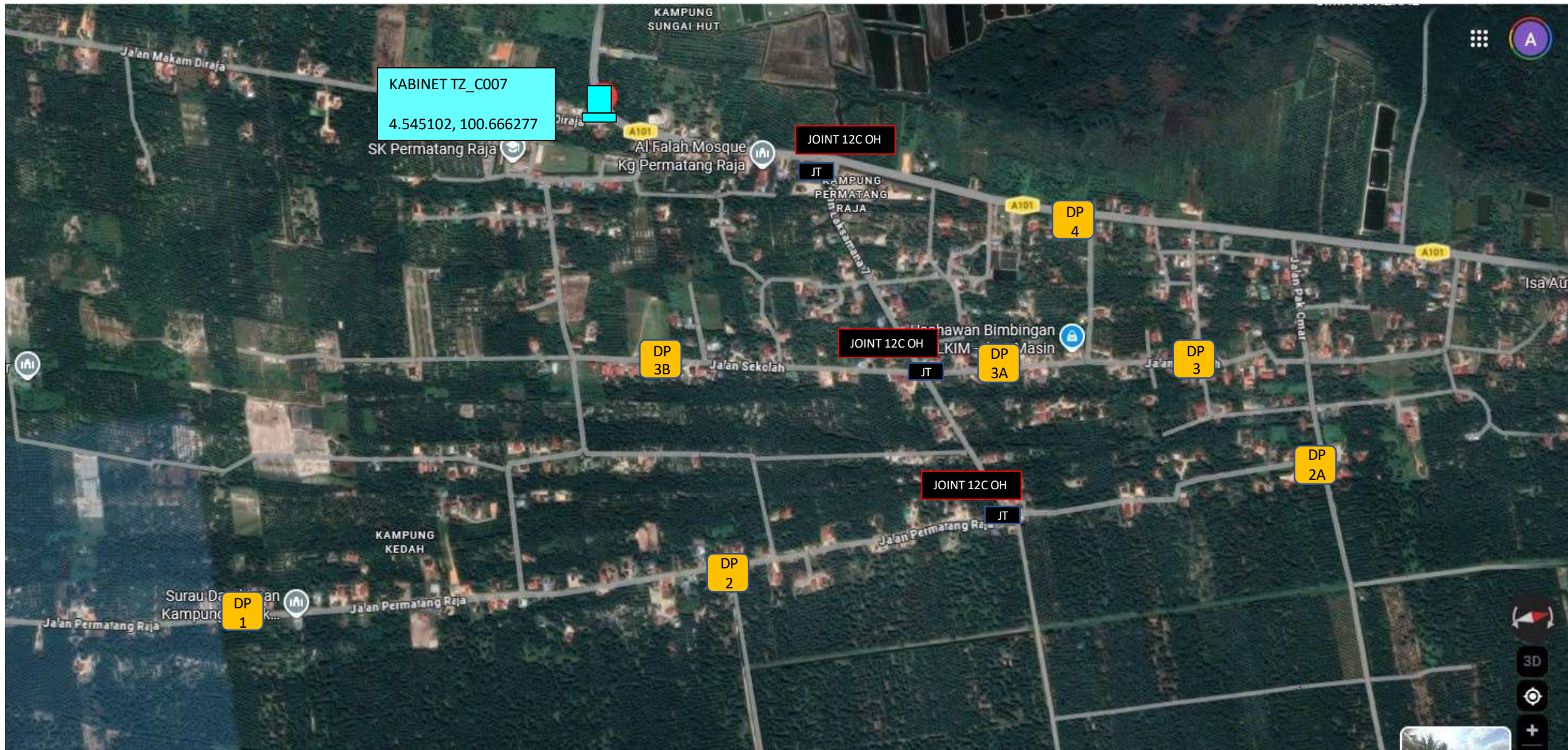
1.1 FDC Location



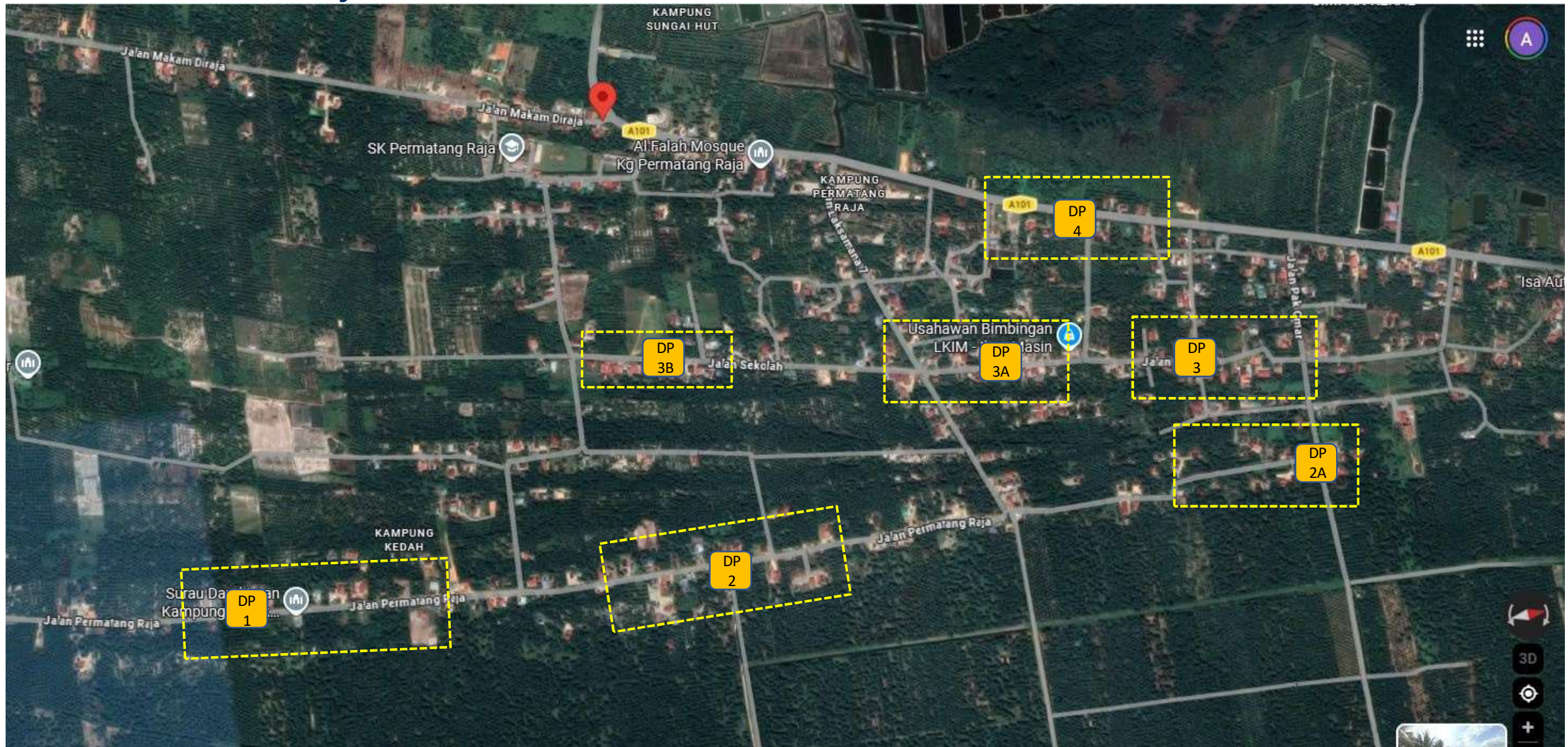
Legend:



2.1 FDP and FOSC Location Plan



2.2 FDP Boundary



Legend:



FDC



FDP



FOSC

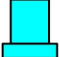





POLE

2.3 Cable Plan



Legend:

	FDC		FDP		FOSC		POLE
---	-----	---	-----	---	------	---	------

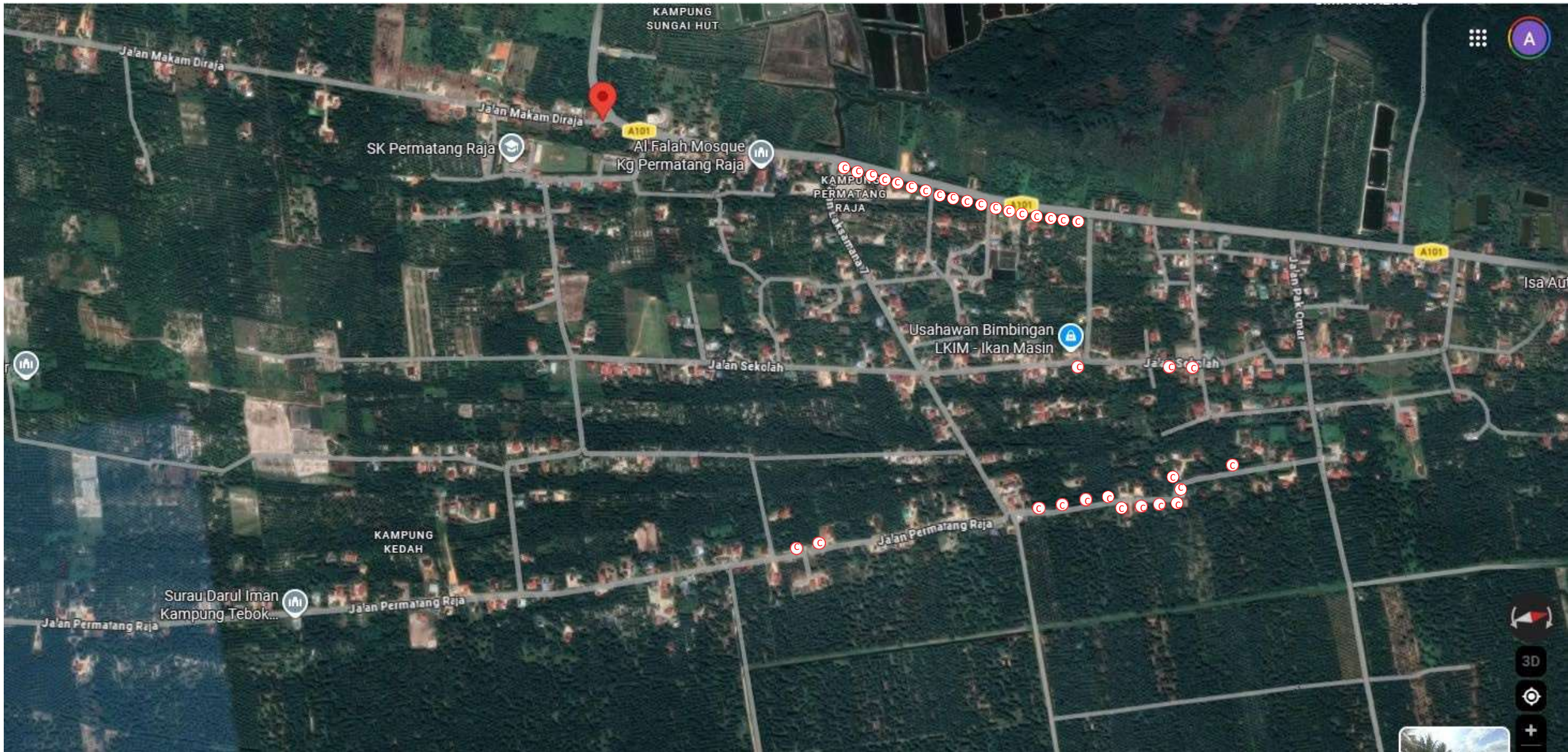
2.5 FDP Details – Normal Project

No	Info	Type	Road/Location	Ports	Properties Covered	Remark
1	DP1	ON POLE	Jalan Permatang Raja, Kg Permatang Raja, 34900 Pantai Remis, Perak	8	8	
2	DP2	ON POLE	Jalan Permatang Raja, Kg Permatang Raja, 34900 Pantai Remis, Perak	8	12	
3	DP3	ON POLE	Jalan Sekolah, Kg Permatang Raja, 34900 Pantai Remis, Perak	8	13	
4	DP4	ON POLE	Jalan Sekolah, Kg Permatang Raja, 34900 Pantai Remis, Perak	8	8	

2.6 Tie FDP Details – Normal Project

No	Info	DP Type	Road/Location	Ports	Properties Covered	Guide
1	DP2A	On Pole	Jalan Permatang Raja, Kg Permatang Raja, 34900 Pantai Remis, Perak	4	4	
2	DP3A	On Pole	Jalan Sekolah, Kg Permatang Raja, 34900 Pantai Remis, Perak	4	4	
3	DP3B	On Pole	Jalan Sekolah, Kg Permatang Raja, 34900 Pantai Remis, Perak	4	4	

3.1 New Pole Plan



Legend:  FDC  FDP  FOSC  POLE

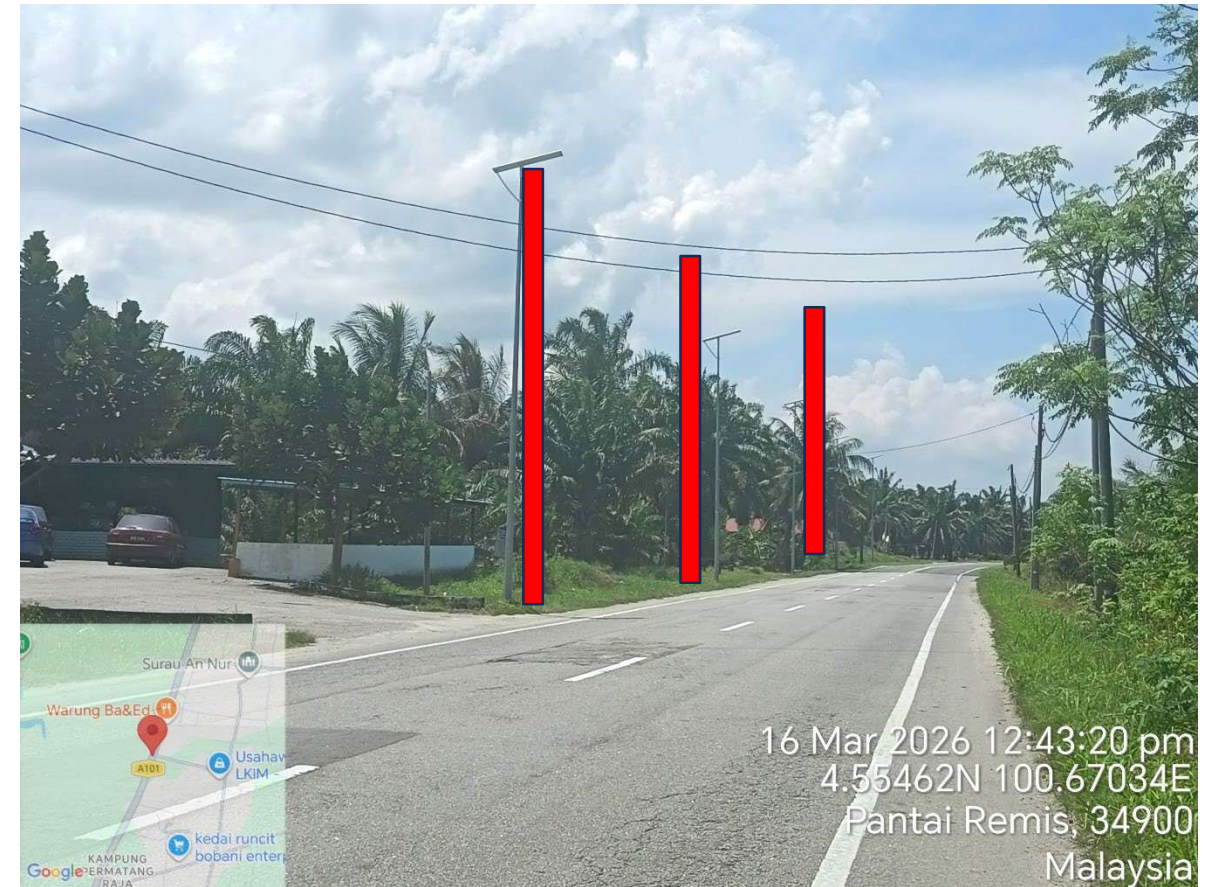
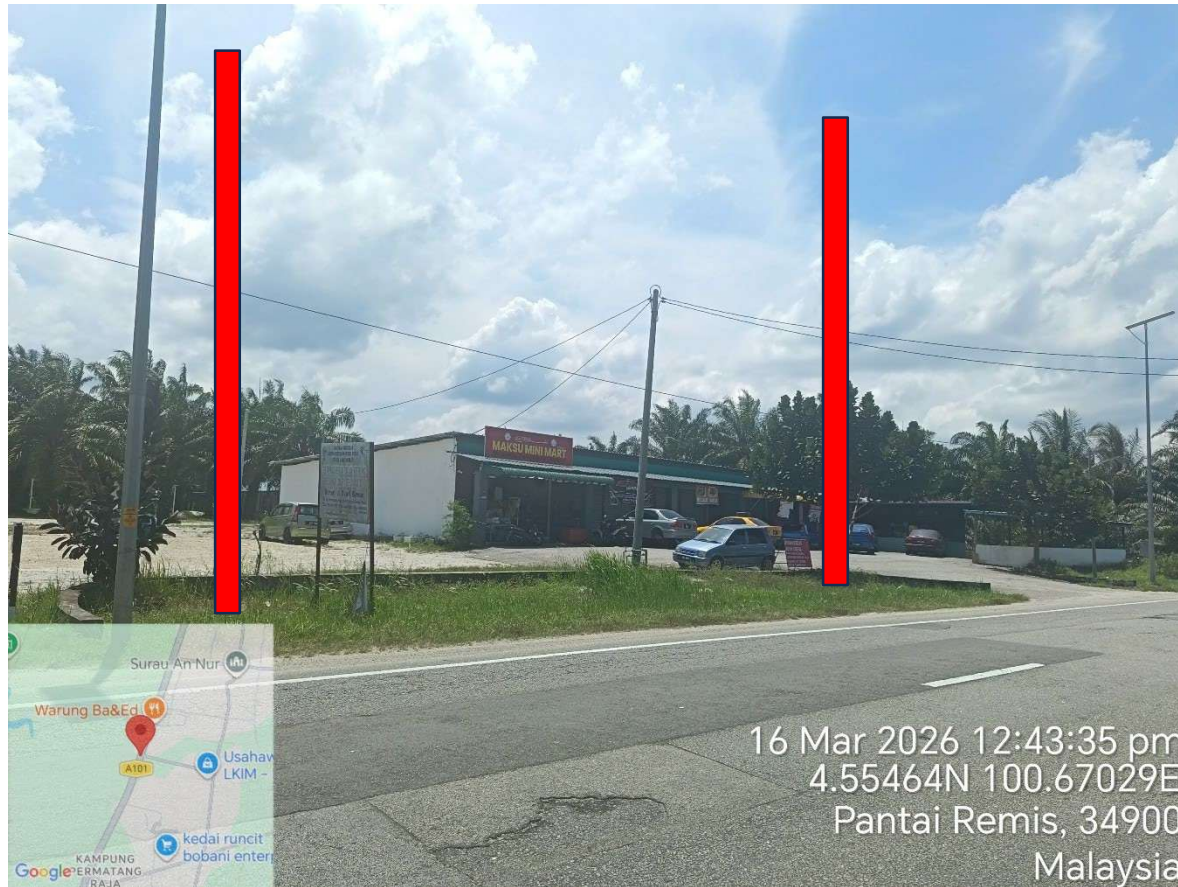
3.2 New Pole details

No	POLE ID	Pole Type	GPS Coordinate
1	1	Concrete Pole 7.5m	4°32'59.28"N 100°40'5.69"E
2	2	Concrete Pole 7.5m	4°33'0.18"N 100°40'6.36"E
3	3	Concrete Pole 7.5m	4°33'0.96"N 100°40'6.71"E
4	4	Concrete Pole 7.5m	4°33'1.80"N 100°40'7.11"E
5	5	Concrete Pole 7.5m	4°33'2.62"N 100°40'7.58"E
6	6	Concrete Pole 7.5m	4°33'3.50"N 100°40'8.03"E
7	7	Concrete Pole 7.5m	4°33'4.39"N 100°40'8.47"E
8	8	Concrete Pole 7.5m	4°33'5.16"N 100°40'8.87"E
9	9	Concrete Pole 7.5m	4°33'6.12"N 100°40'9.35"E
10	10	Concrete Pole 7.5m	4°33'7.02"N 100°40'9.82"E
11	11	Concrete Pole 7.5m	4°33'8.10"N 100°40'10.37"E
12	12	Concrete Pole 7.5m	4°33'9.08"N 100°40'10.88"E
13	13	Concrete Pole 7.5m	4°33'10.01"N 100°40'11.28"E
14	14	Concrete Pole 7.5m	4°33'11.28"N 100°40'11.84"E
15	15	Concrete Pole 7.5m	4°33'12.54"N 100°40'12.31"E
16	16	Concrete Pole 7.5m	4°33'13.73"N 100°40'12.69"E
17	17	Concrete Pole 7.5m	4°33'15.04"N 100°40'13.03"E
18	18	Concrete Pole 7.5m	4°33'16.40"N 100°40'13.42"E

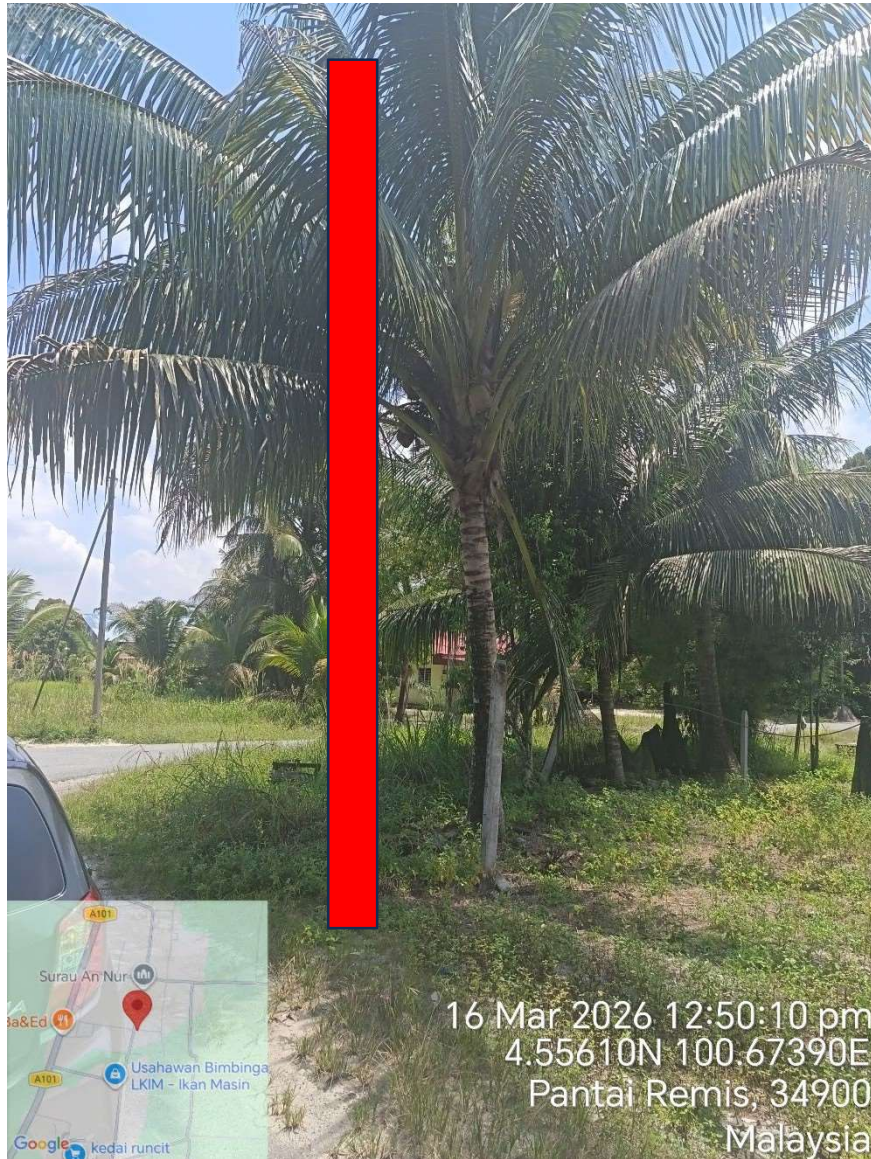
3.2 New Pole details

No	POLE18 ID	Pole Type	GPS Coordinate
19	19	Concrete Pole 7.5m	4°33'13.76"N 100°40'24.46"E
20	20	Concrete Pole 7.5m	4°33'21.12"N 100°40'26.14"E
21	21	Concrete Pole 7.5m	4°33'22.09"N 100°40'26.41"E
22	22	Concrete Pole 7.5m	4°32'49.50"N 100°40'33.77"E
23	23	Concrete Pole 7.5m	4°32'51.78"N 100°40'33.76"E
24	24	Concrete Pole 7.5m	4°33'7.60"N 100°40'34.24"E
25	25	Concrete Pole 7.5m	4°33'9.63"N 100°40'34.60"E
26	26	Concrete Pole 7.5m	4°33'11.43"N 100°40'34.73"E
27	27	Concrete Pole 7.5m	4°33'13.16"N 100°40'34.78"E
28	28	Concrete Pole 7.5m	4°33'14.00"N 100°40'35.16"E
29	29	Concrete Pole 7.5m	4°33'15.57"N 100°40'35.36"E
30	30	Concrete Pole 7.5m	4°33'16.93"N 100°40'35.66"E
31	31	Concrete Pole 7.5m	4°33'18.05"N 100°40'35.80"E
32	32	Concrete Pole 7.5m	4°33'18.60"N 100°40'35.19"E
33	33	Concrete Pole 7.5m	4°33'18.48"N 100°40'34.54"E
34	34	Concrete Pole 7.5m	4°33'23.16"N 100°40'34.49"E

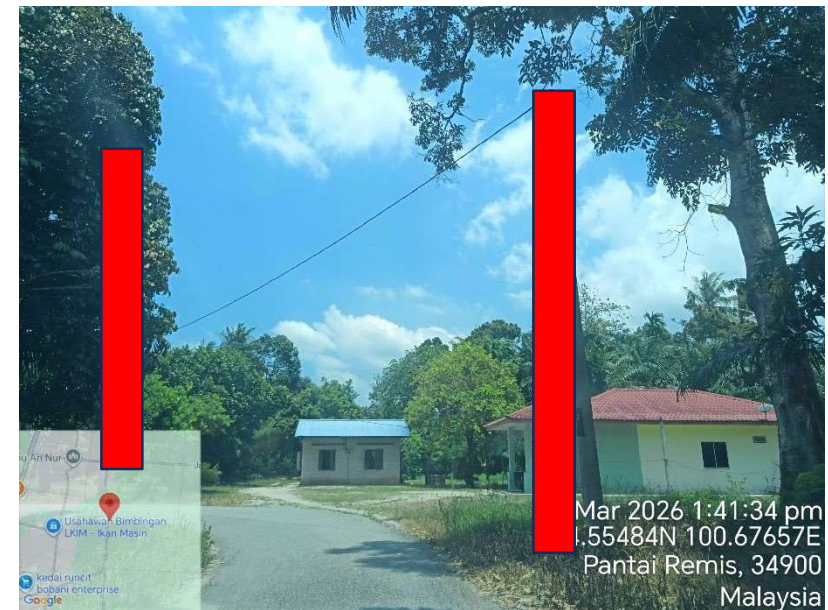
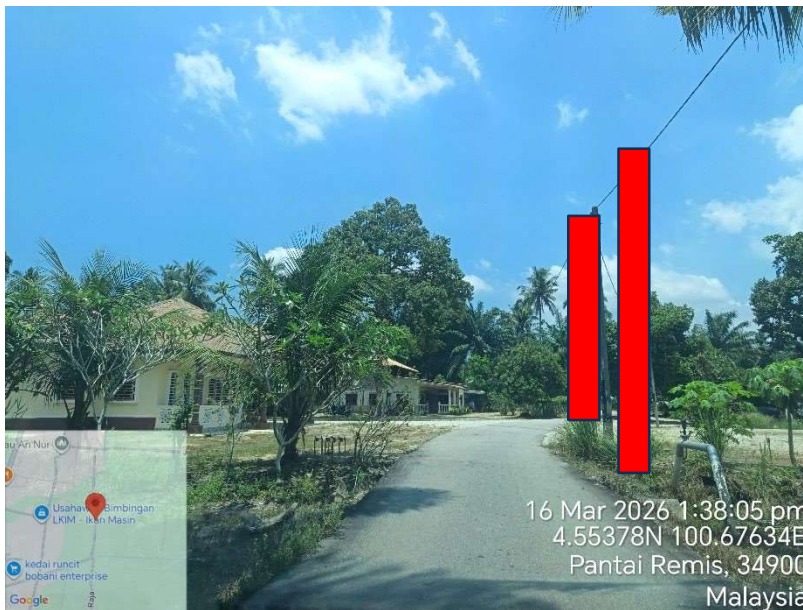
3.3 New Pole Illustration



3.3 New Pole Illustration



3.3 New Pole Illustration



END OF TECHNICAL PROPOSAL