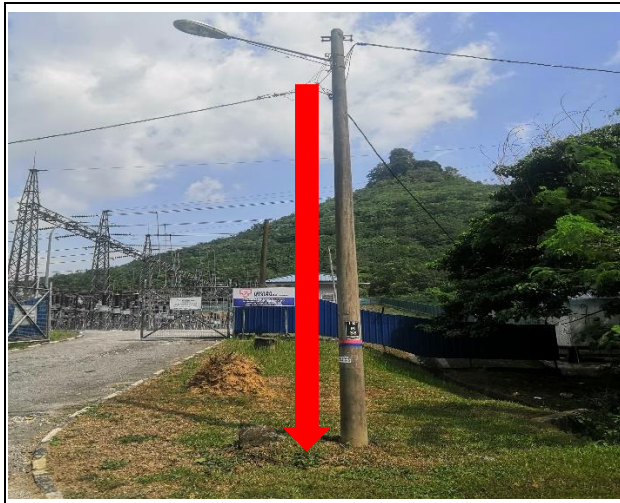


POP2 E/SIDE PMU SUNGAI SIPUT- Technical Proposal

| | | |
|----------------|---|---|
| Company Name | : | Harta Unity Sdn. Bhd. |
| Company Adress | : | 67/67A, Laluan Meru Perdana II, Taman Meru perdana 2, 31200 Chemor, Perak |
| Prepared By | : | Ahmad Firdaus Bin Husnee |
| Date | : | |



POINT A



POINT B

Starting Point

| | | |
|--------------------|---|------------------------|
| Site/Boundary Name | : | Sungai Siput |
| Address | : | PMU,31100 Sungai Siput |
| District | : | Sungai Siput |
| Postcode | : | 31100 |
| State | : | Perak |
| GPS Coordinate | : | 4.831812, 101.058709 |
| LRD | : | A |

End Point

| | | |
|--------------------|---|---------------------------|
| Site/Boundary Name | : | Sungai Siput |
| Address | : | SMA Maahad Nurul Fadzliah |
| District | : | Kampung Kelimat |
| Postcode | : | 31100 |
| State | : | Perak |
| GPS Coordinate | : | 4.904465, 101.037277 |
| LRD | : | B |

Work Summary

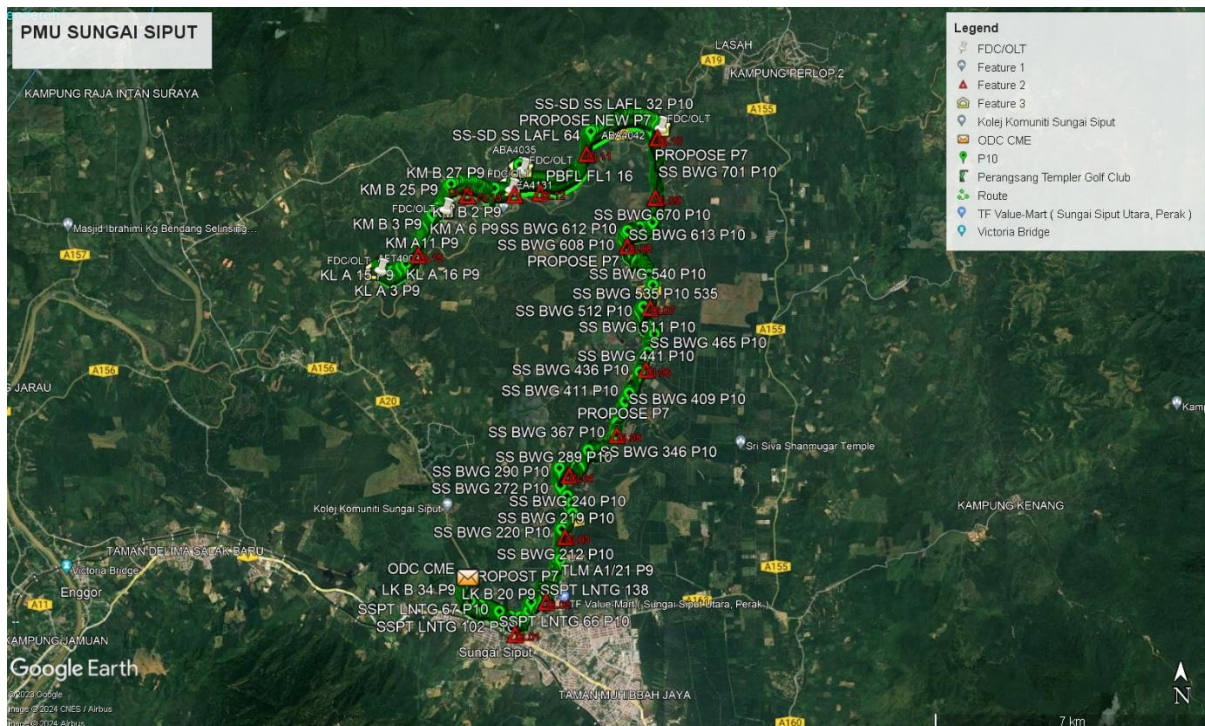
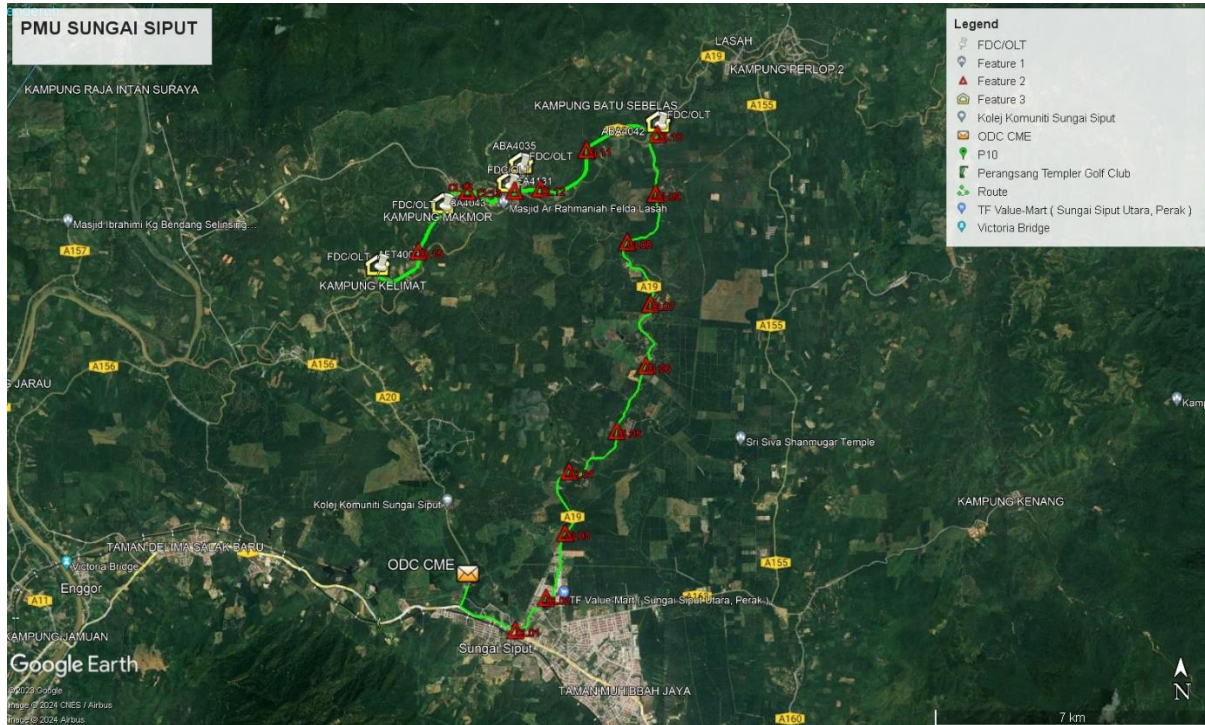
| No | Proposed Distance and Method | Unit | Qty |
|----|---------------------------------------|------|-----|
| 1 | Horizontal Directional Drilling (HDD) | m | 0 |
| 2 | Carriage Way Open Trench (CW) | m | 0 |
| 3 | Grass Verge Open Trenching (GV) | m | 60m |
| 4 | Micro Trenching (MT) | m | 0 |
| | | | 60m |

| No | Propose Distance and Method | Unit | Qty |
|----|--|------|-----|
| 1 | Propose Pole | EA | 103 |
| 2 | Joint Closure | EA | 15 |
| 3 | Estimated Time Required For Completion | DAYS | 90 |

Local Authority Summary

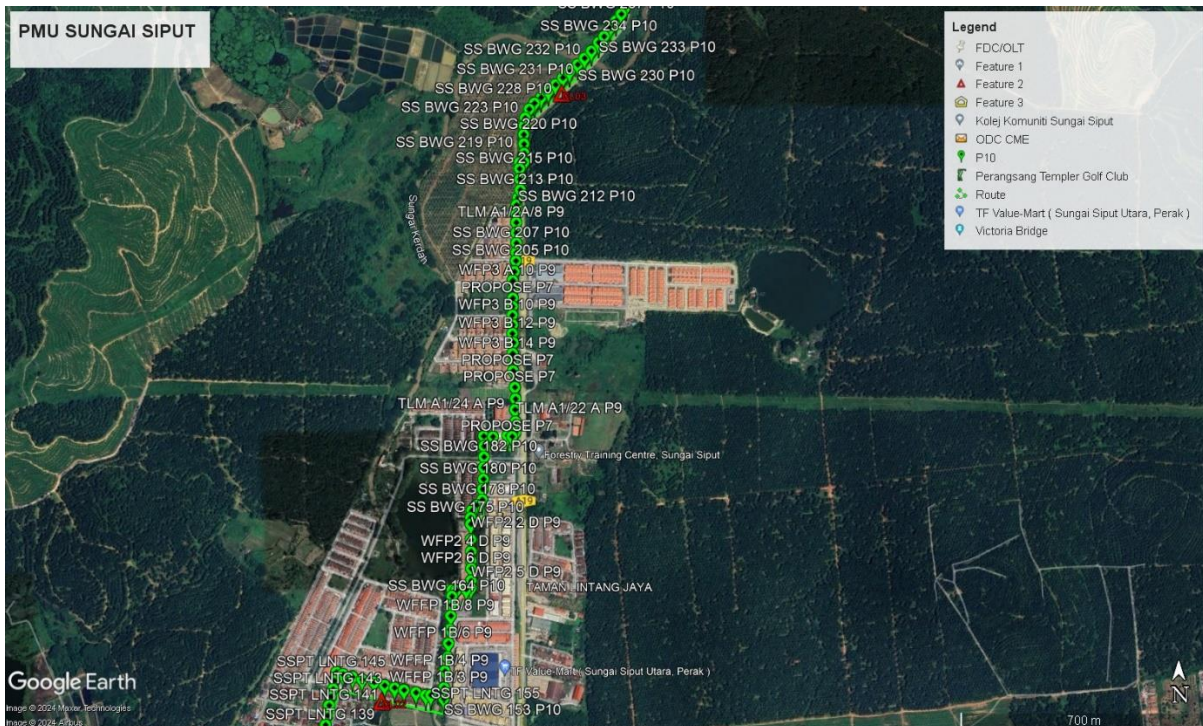
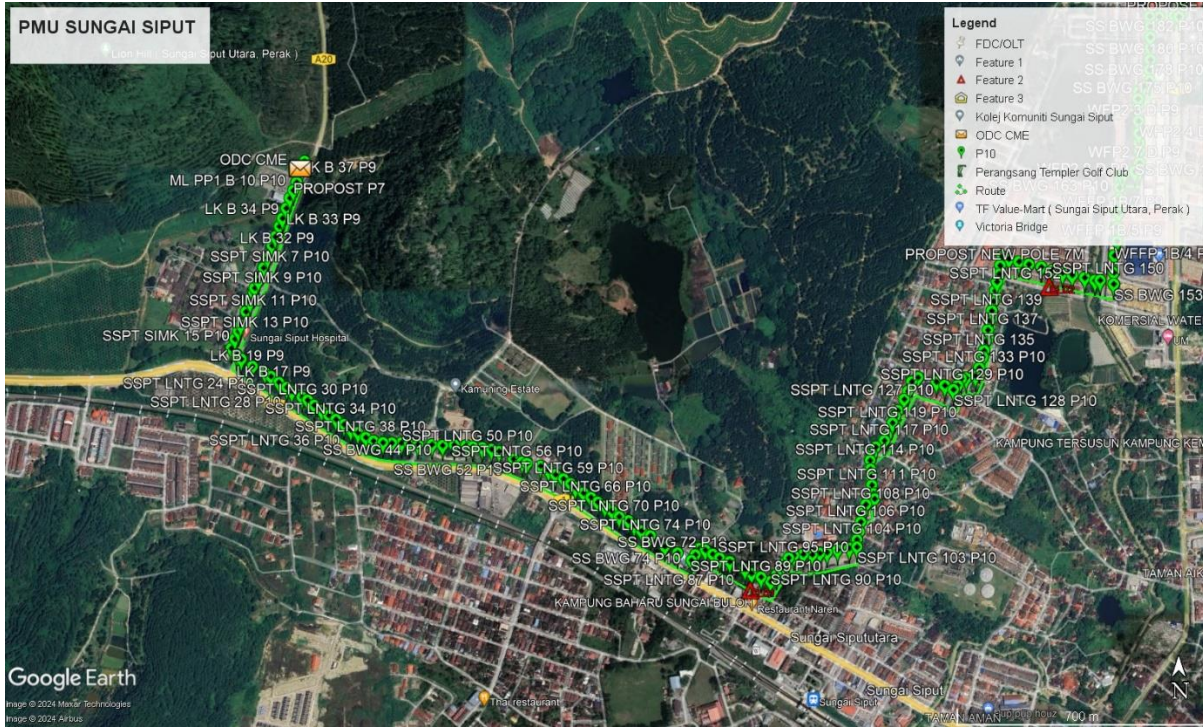
| Bil | Items | Owner | Quantity | Distance |
|-------|-------------------|---------------------|----------|----------|
| 1 | Open Trenching | MAJLIS | 60m | 60m |
| 2 | New Pole | JKR | | |
| | | MAJLIS | | |
| | | Estate/Private Land | | |
| 3 | Existing TNB Pole | JKR | 26939m | 26939m |
| | | MAJLIS | 3961m | 3901m |
| | | Estate/Private Land | | |
| Total | | | | 30900m |

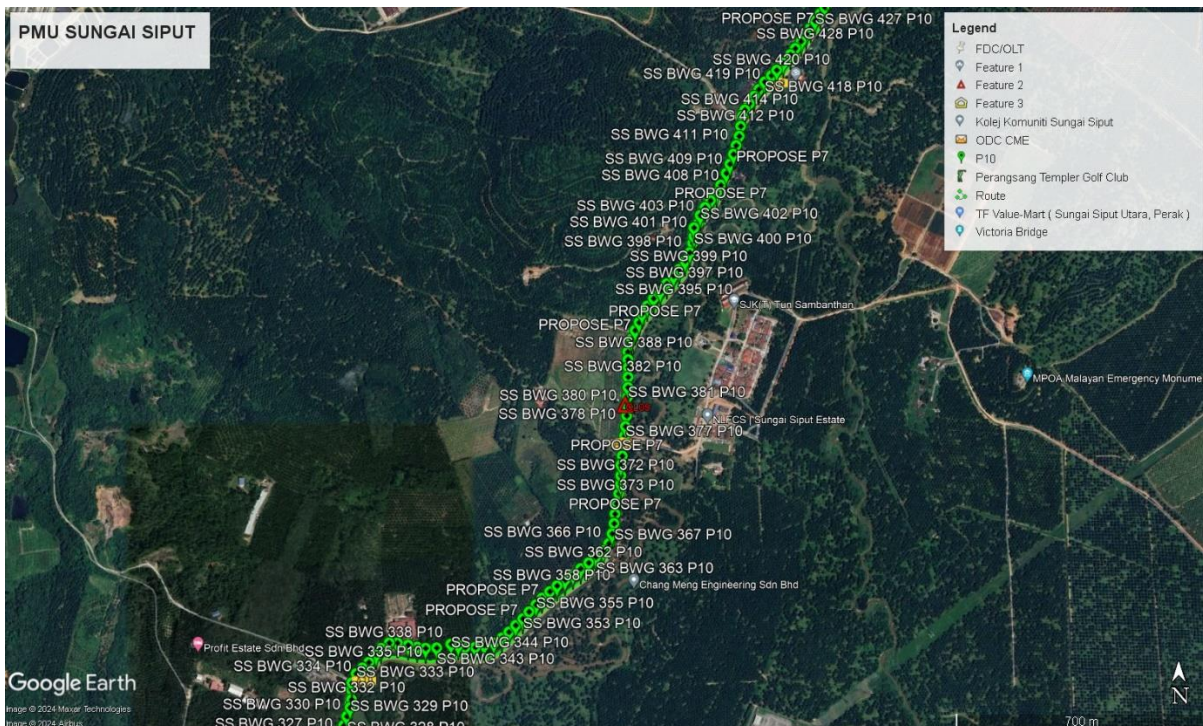
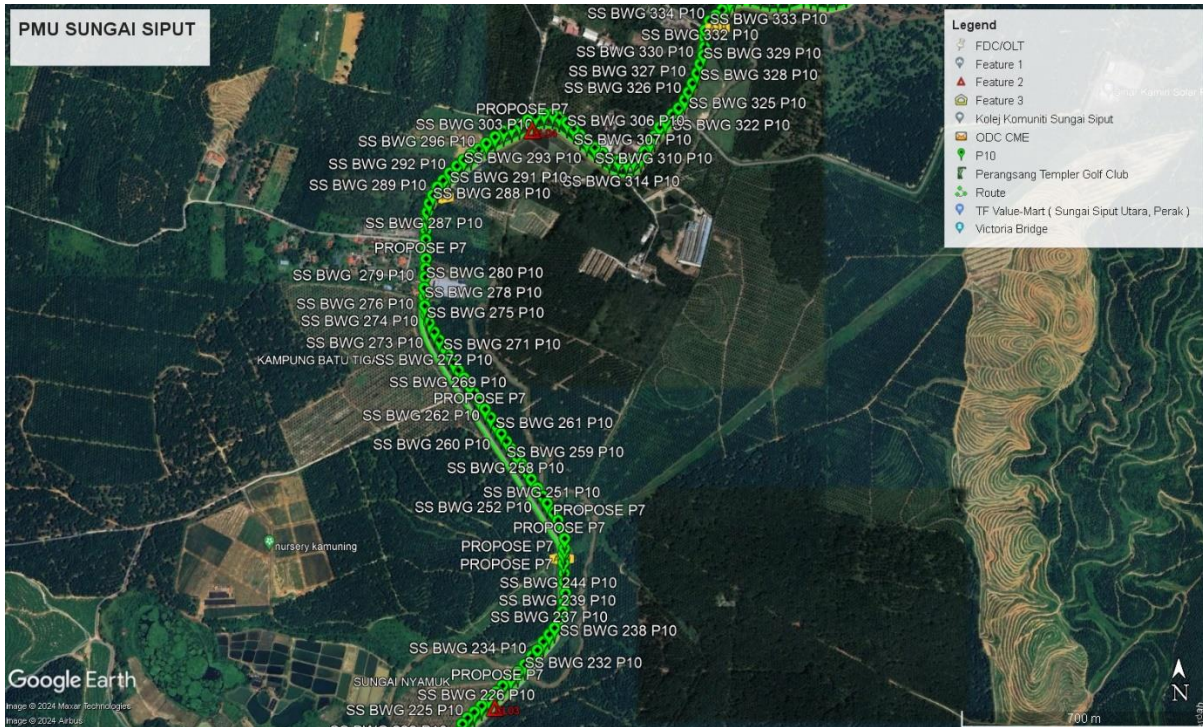
Site Plan- KMZ (Overview Site Area)

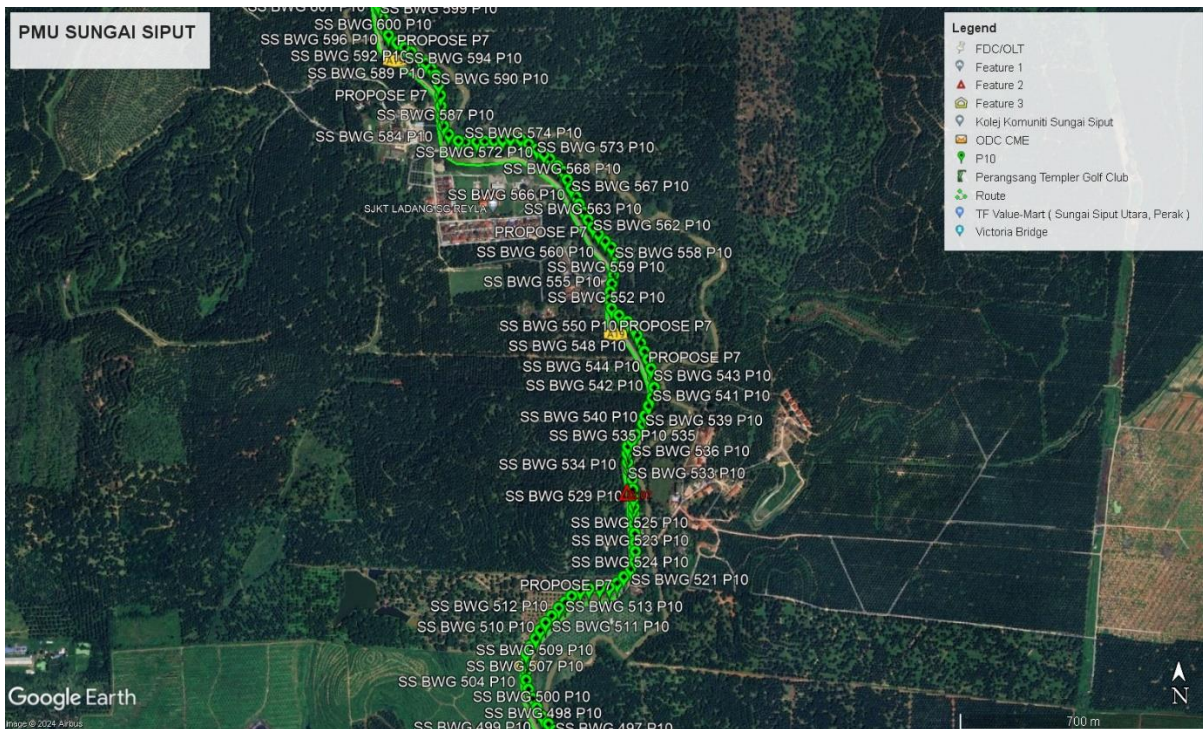
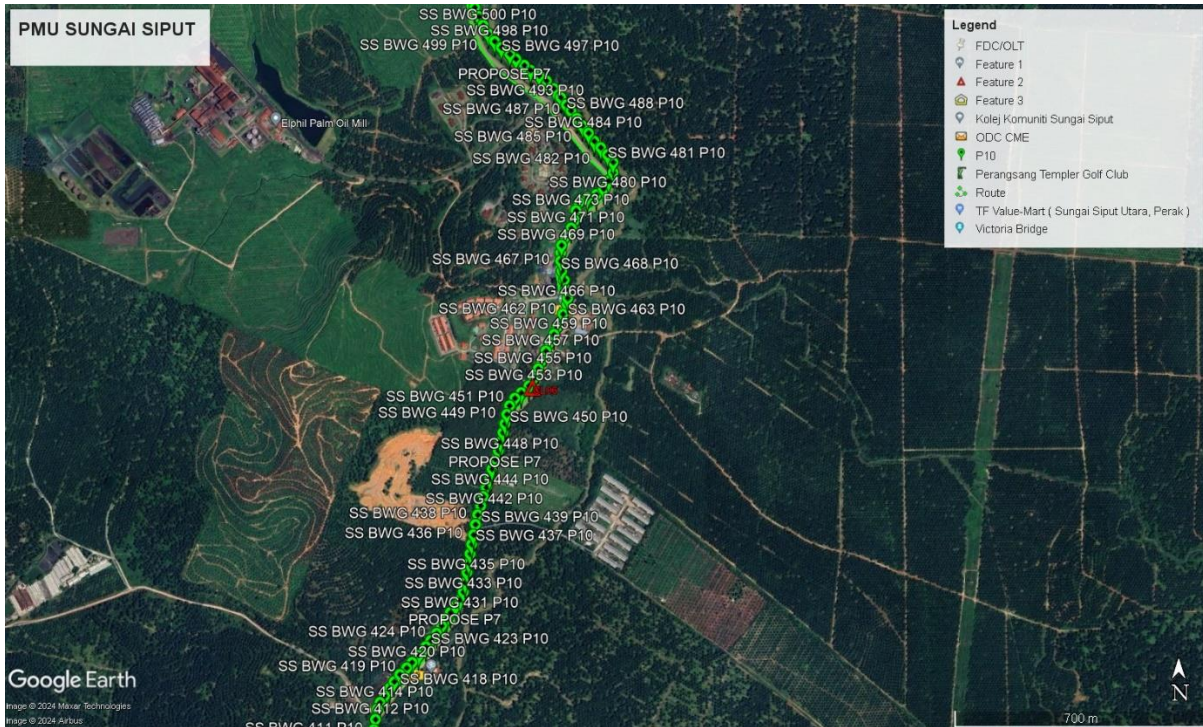


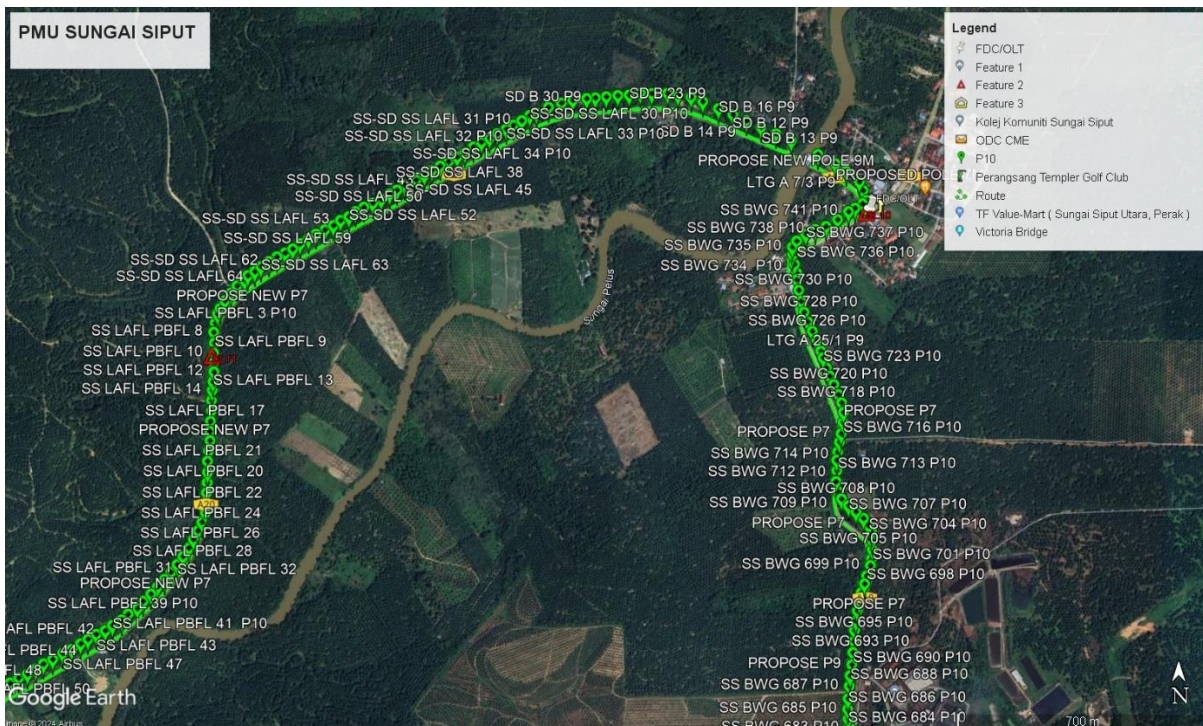
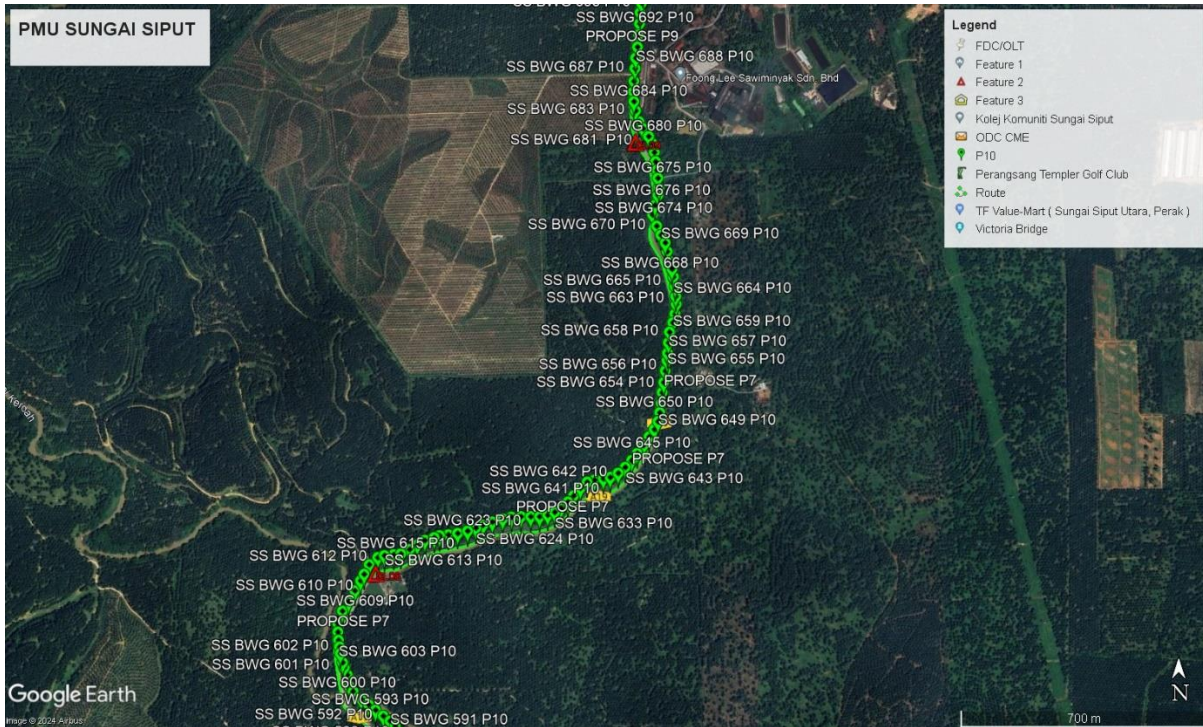
Site Plan-KMZ Routing (All site area)

Route







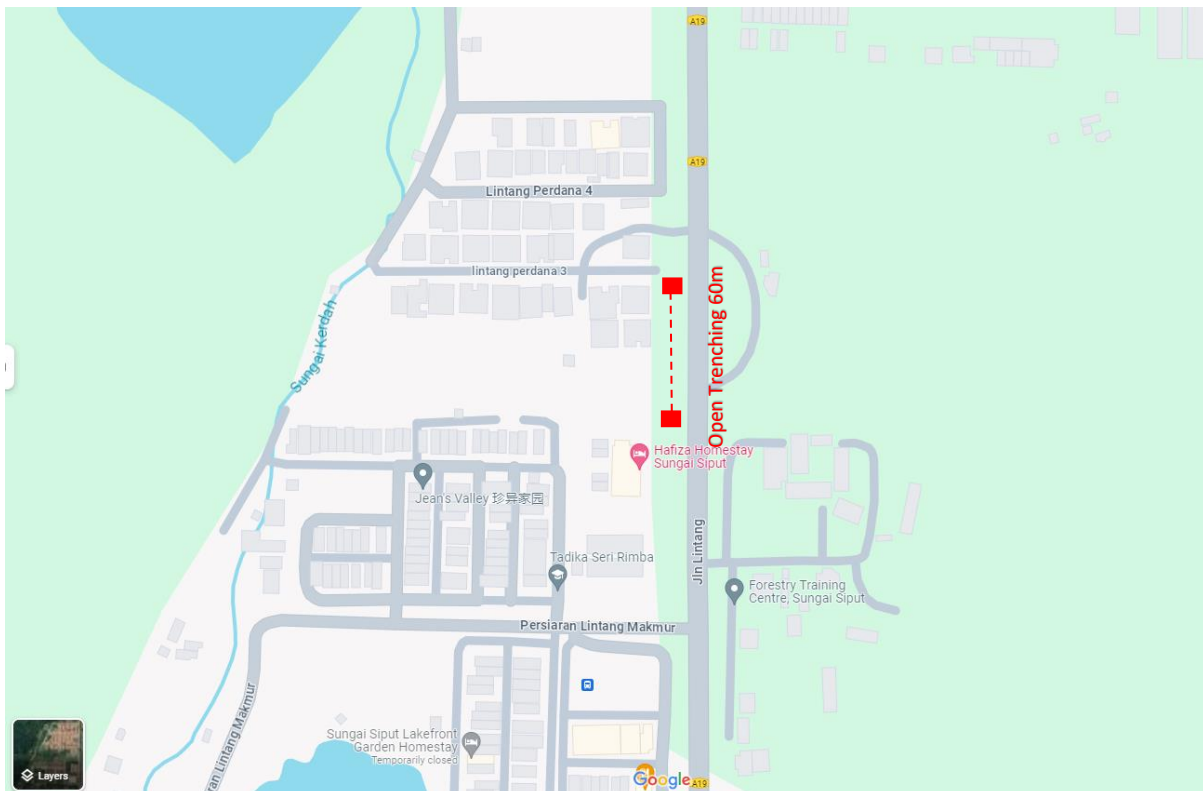


Site Plan – KMZ Routing (Prop New Manhole)



Figure : Location 1 (4.836653692, 101.0805460) & Location 2 (4.836653692, 101.0805460)

Site Plan - Google Map (Routing Plan, Manhole)



Propose New Manhole Lat & Long Table

| Propose Manhole Coordinate | | |
|-----------------------------------|-----------------|------------------|
| MANHOLE NUMBER | LATITUDE | LONGITUDE |
| Propose MH1 | 4.836653692 | 101.0805460 |
| Propose MH2 | 4.836653692 | 101.0805460 |

Propose New Pole Lat & Long Table

| PROPOSE POLE COORDINATE | | |
|--------------------------------|-----------------|------------------|
| POLE NUMBER | LATITUDE | LONGITUDE |
| T01 | 4.83109 | 101.058424 |
| T02 | 4.827401 | 101.056943 |
| T03 | 4.822140337 | 101.0683231 |
| T04 | 4.829169 | 101.075844 |
| T05 | 4.835273 | 101.080313 |
| T06 | 4.836505 | 101.08038 |
| T07 | 4.83692 | 101.080335 |
| T08 | 4.837623 | 101.080345 |
| T09 | 4.83807 | 101.080326 |
| T10 | 4.838738 | 101.080329 |
| T11 | 4.840847 | 101.080408 |
| T12 | 4.844414 | 101.081755 |
| T13 | 4.847222 | 101.083302 |
| T14 | 4.847717 | 101.083282 |
| T15 | 4.84785 | 101.08331 |
| T16 | 4.848092 | 101.083313 |
| T17 | 4.848311 | 101.08327 |
| T18 | 4.848756 | 101.083019 |
| T19 | 4.851338 | 101.081314 |
| T20 | 4.851736 | 101.081038 |
| T21 | 4.855105 | 101.079826 |
| T22 | 4.858394 | 101.081984 |
| T23 | 4.858576 | 101.082389 |
| T24 | 4.858019 | 101.085475 |
| T25 | 4.858403 | 101.085709 |
| T26 | 4.861528 | 101.087458 |
| T27 | 4.862583 | 101.091299 |
| T28 | 4.86309 | 101.091822 |
| T29 | 4.865777 | 101.093604 |
| T30 | 4.866485 | 101.093648 |
| T31 | 4.870053 | 101.094148 |
| T32 | 4.870617 | 101.094608 |
| T33 | 4.873574 | 101.096269 |
| T34 | 4.874272 | 101.096517 |
| T35 | 4.877095 | 101.098296 |
| T36 | 4.877754 | 101.098768 |
| T37 | 4.881039 | 101.099572 |
| T38 | 4.881721 | 101.099784 |
| T39 | 4.884933 | 101.101363 |
| T40 | 4.885555 | 101.101439 |
| T41 | 4.888496 | 101.102633 |
| T42 | 4.890615 | 101.101131 |
| T43 | 4.891462 | 101.100024 |
| T44 | 4.893931 | 101.099317 |

| PROPOSE POLE COORDINATE | | |
|-------------------------|----------|------------|
| POLE NUMBER | LATITUDE | LONGITUDE |
| T45 | 4.894998 | 101.100224 |
| T46 | 4.896798 | 101.101799 |
| T47 | 4.900941 | 101.102157 |
| T48 | 4.902049 | 101.101422 |
| T49 | 4.904088 | 101.100901 |
| T50 | 4.905811 | 101.099878 |
| T51 | 4.906428 | 101.097822 |
| T52 | 4.907841 | 101.096868 |
| T53 | 4.908924 | 101.095795 |
| T54 | 4.911405 | 101.095503 |
| T55 | 4.912703 | 101.097033 |
| T56 | 4.913314 | 101.09889 |
| T57 | 4.913889 | 101.101032 |
| T58 | 4.914941 | 101.102644 |
| T59 | 4.916898 | 101.103452 |
| T60 | 4.91906 | 101.103757 |
| T61 | 4.921106 | 101.103172 |
| T62 | 4.925318 | 101.102791 |
| T63 | 4.927359 | 101.103102 |
| T64 | 4.929167 | 101.102881 |
| T65 | 4.931122 | 101.10251 |
| T66 | 4.931658 | 101.102567 |
| T67 | 4.932101 | 101.102437 |
| T68 | 4.937237 | 101.1031 |
| T69 | 4.936989 | 101.103194 |
| T70 | 4.937905 | 101.102393 |
| T71 | 4.938142 | 101.10195 |
| T72 | 4.938487 | 101.101273 |
| T73 | 4.939163 | 101.094836 |
| T74 | 4.935083 | 101.08757 |
| T75 | 4.934983 | 101.087467 |
| T76 | 4.934962 | 101.08749 |
| T77 | 4.93095 | 101.086619 |
| T78 | 4.927082 | 101.085076 |
| T79 | 4.924849 | 101.081527 |
| T80 | 4.924636 | 101.081071 |
| T81 | 4.924536 | 101.080852 |
| T82 | 4.92446 | 101.080734 |
| T83 | 4.924403 | 101.080549 |
| T84 | 4.924213 | 101.079977 |
| T85 | 4.924165 | 101.077905 |
| T86 | 4.924189 | 101.077789 |
| T87 | 4.924602 | 101.073066 |
| T88 | 4.925167 | 101.070601 |

| PROPOSE POLE COORDINATE | | |
|--------------------------------|-----------------|------------------|
| POLE NUMBER | LATITUDE | LONGITUDE |
| T89 | 4.926244 | 101.070413 |
| T90 | 4.927309 | 101.071178 |
| T91 | 4.922944 | 101.06889 |
| T92 | 4.921857 | 101.064852 |
| T93 | 4.921831 | 101.064537 |
| T94 | 4.921902 | 101.063511 |
| T95 | 4.923761 | 101.059869 |
| T96 | 4.923707 | 101.056622 |
| T97 | 4.923324 | 101.055817 |
| T98 | 4.919438 | 101.052479 |
| T99 | 4.918761 | 101.052138 |
| T100 | 4.910428 | 101.04698 |
| T101 | 4.903016 | 101.040214 |
| T102 | 4.90306 | 101.039925 |
| T103 | 4.90331 | 101.039425 |
| T89 | 4.926244 | 101.070413 |
| T90 | 4.927309 | 101.071178 |
| T91 | 4.922944 | 101.06889 |
| T92 | 4.921857 | 101.064852 |
| T93 | 4.921831 | 101.064537 |
| T94 | 4.921902 | 101.063511 |
| T95 | 4.923761 | 101.059869 |
| T96 | 4.923707 | 101.056622 |
| T97 | 4.923324 | 101.055817 |
| T98 | 4.919438 | 101.052479 |
| T99 | 4.918761 | 101.052138 |
| T100 | 4.910428 | 101.04698 |
| T101 | 4.903016 | 101.040214 |
| T102 | 4.90306 | 101.039925 |
| T103 | 4.90331 | 101.039425 |

Overall Pole (Propose New & Existing)

| No. | Pole & Manhole ID | Distance | Latitude | Longitude | Local Authority |
|-----|--------------------------|----------|----------|------------|-----------------|
| 1 | LK B 38 PMU SG SIPUT P9 | 24 | 4.831812 | 101.058709 | JKR |
| 2 | LK B 37 P9 | 40 | 4.831618 | 101.058647 | JKR |
| 3 | ML PP1 B 10 P10 | 25 | 4.831292 | 101.058509 | JKR |
| 4 | T01 | 24 | 4.83109 | 101.058424 | JKR |
| 5 | LK B 34 P9 | 31 | 4.830901 | 101.058343 | JKR |
| 6 | LK B 33 P9 | 31 | 4.830648 | 101.058245 | JKR |
| 7 | LK B 32 P9 | 25 | 4.830399 | 101.058148 | JKR |
| 8 | SSPT SIMK 6 P10 | 32 | 4.830198 | 101.058073 | JKR |
| 9 | SSPT SIMK 7 P10 | 27 | 4.829942 | 101.057963 | JKR |
| 10 | SSPT SIMK 8 P10 | 37 | 4.829722 | 101.057889 | JKR |
| 11 | SSPT SIMK 9 P10 | 31 | 4.82942 | 101.05777 | JKR |
| 12 | SSPT SIMK 10 P10 | 39 | 4.82917 | 101.05767 | JKR |
| 13 | SSPT SIMK 11 P10 | 24 | 4.828855 | 101.057539 | JKR |
| 14 | SSPT LNTG 13 P10 | 15 | 4.828671 | 101.057445 | JKR |
| 15 | SSPT SIMK 12 P10 | 29 | 4.828548 | 101.057421 | JKR |
| 16 | SSPT SIMK 13 P10 | 29 | 4.828311 | 101.057329 | JKR |
| 17 | SSPT SIMK 14 P10 | 40 | 4.828079 | 101.057223 | JKR |
| 18 | SSPT SIMK 15 P10 | 20 | 4.827751 | 101.057088 | JKR |
| 19 | SSPT SIMK 16 P10 | 24 | 4.827593 | 101.05703 | JKR |
| 20 | T02 | 29 | 4.827401 | 101.056943 | JKR |
| 21 | 11KV PMU 9 K5 TFK 21 P10 | 24 | 4.827169 | 101.056856 | JKR |
| 22 | SS-BWG 21 P10 | 19 | 4.82701 | 101.056989 | JKR |
| 23 | LK B 20 P9 | 38 | 4.826902 | 101.057104 | JKR |
| 24 | LK B 19 P9 | 40 | 4.826721 | 101.057383 | JKR |
| 25 | SSPT LNTG 24 P10 | 21 | 4.826563 | 101.057693 | JKR |
| 26 | SSPT LNTG 25 P10 | 29 | 4.82647 | 101.057845 | JKR |
| 27 | LK B 17 P9 | 27 | 4.826323 | 101.058046 | JKR |
| 28 | SSPT LNTG 27 P10 | 19 | 4.826198 | 101.058244 | JKR |
| 29 | SSPT LNTG 28 P10 | 34 | 4.8261 | 101.058369 | JKR |
| 30 | LK B 15 P9 | 18 | 4.825953 | 101.058624 | JKR |
| 31 | SSPT LNTG 30 P10 | 24 | 4.825882 | 101.058763 | JKR |
| 32 | SSPT LNTG 31 P10 | 26 | 4.825752 | 101.058926 | JKR |
| 33 | SSPT LNTG32 P10 | 25 | 4.825625 | 101.059116 | JKR |
| 34 | SSPT LNTG 33 P10 | 24 | 4.825499 | 101.059293 | JKR |
| 35 | SSPT LNTG 34 P10 | 27 | 4.825401 | 101.059477 | JKR |
| 36 | SSPT LNTG 35 P10 | 24 | 4.825274 | 101.059676 | JKR |
| 37 | SSPT LNTG 36 P10 | 22 | 4.825146 | 101.059844 | JKR |
| 38 | SS BWG 35 P10 | 26 | 4.825071 | 101.060022 | JKR |
| 39 | SSPT LNTG 38 P10 | 25 | 4.824952 | 101.060218 | JKR |
| 40 | SSPT LNTG 39 P10 | 28 | 4.824862 | 101.06041 | JKR |
| 41 | SSPT LNTG 40 P10 | 26 | 4.824821 | 101.060648 | JKR |
| 42 | SSPT LNTG 41 P10 | 28 | 4.824811 | 101.060869 | JKR |
| 43 | SSPT LNTG 42 P10 | 23 | 4.824816 | 101.061109 | JKR |
| 44 | SSPT LNTG 43 P10 | 25 | 4.824798 | 101.061305 | JKR |
| 45 | SSPT LNTG 44 P10 | 40 | 4.824779 | 101.061521 | JKR |
| 46 | SS BWG 43 P10 | 30 | 4.824773 | 101.061876 | JKR |
| 47 | SS BWG 44 P10 | 33 | 4.824749 | 101.06214 | JKR |
| 48 | SS BWG 45 P10 | 35 | 4.824764 | 101.062429 | JKR |
| 49 | SS BWG 46 P10 | 19 | 4.824754 | 101.062733 | JKR |
| 50 | SSPT LNTG 50 P10 | 27 | 4.824721 | 101.062896 | JKR |
| 51 | SSPT LNTG 51 P10 | 27 | 4.824694 | 101.063131 | JKR |
| 52 | SSPT LNTG 52 P10 | 23 | 4.824655 | 101.063363 | JKR |
| 53 | SSPT LNTG 53 P10 | 46 | 4.824603 | 101.063554 | JKR |

APPOINTMENT AS PANEL CONTRACTOR UNDER THE BUMIPUTERA CONTRACTORS PROGRAMME FOR WORKS UNDER SCHEDULE OF RATE (“SOR”) FOR SUPPLY, INSTALLATION AND COMMISSIONING OF FTTX NETWORK INFRASTRUCTURE FOR ALLO TECHNOLOGY SDN BHD

| No. | Pole & Manhole ID | Distance | Latitude | Longitude | Local Authority |
|-----|-------------------|----------|-------------|-------------|-----------------|
| 54 | SS BWG 52 P10 | 27 | 4.824409 | 101.063911 | JKR |
| 55 | SSPT LNTG 56 P10 | 15 | 4.824336 | 101.064132 | JKR |
| 56 | SS BWG 54 P10 | 40 | 4.824303 | 101.064252 | JKR |
| 57 | SSPT LNTG 59 P10 | 26 | 4.824238 | 101.064594 | JKR |
| 58 | SSPT LNTG 60 P10 | 23 | 4.824129 | 101.064792 | JKR |
| 59 | SSPT LNTG 58 P10 | 26 | 4.824024 | 101.064965 | JKR |
| 60 | SSPT LNTG 59 P10 | 25 | 4.823921 | 101.065167 | JKR |
| 61 | SSPT LNTG 60 P10 | 18 | 4.823803 | 101.065344 | JKR |
| 62 | SSPT LNTG 64 P10 | 28 | 4.823705 | 101.065466 | JKR |
| 63 | SSPT LNTG 65 P10 | 25 | 4.823571 | 101.065669 | JKR |
| 64 | SSPT LNTG 66 P10 | 24 | 4.823464 | 101.065854 | JKR |
| 65 | SSPT LNTG 67 P10 | 24 | 4.823347 | 101.066022 | JKR |
| 66 | SSPT LNTG 68 P10 | 25 | 4.823243 | 101.066204 | JKR |
| 67 | SSPT LNTG 69 P10 | 26 | 4.823123 | 101.066381 | JKR |
| 68 | SSPT LNTG 70 P10 | 29 | 4.822991 | 101.06656 | JKR |
| 69 | SSPT LNTG 71 P10 | 21 | 4.822883 | 101.066792 | JKR |
| 70 | SSPT LNTG 72 P10 | 27 | 4.822767 | 101.066935 | JKR |
| 71 | SSPT LNTG 73 P10 | 29 | 4.822626 | 101.067119 | JKR |
| 72 | SSPT LNTG 74 P10 | 117 | 4.822505 | 101.067344 | JKR |
| 73 | T03 | 17 | 4.822140337 | 101.0683231 | JKR |
| 74 | SS BWG 72 P10 | 64 | 4.822042608 | 101.0682138 | JKR |
| 75 | SS BWG 74 P10 | 36 | 4.821986593 | 101.0687775 | JKR |
| 76 | SS BWG 75 P10 | 22 | 4.822028162 | 101.0684679 | MAJLIS |
| 77 | SS BWG 77 P10 | 18 | 4.822186 | 101.068566 | MAJLIS |
| 78 | SS BWG 78 P10 | 25 | 4.82215 | 101.068715 | MAJLIS |
| 79 | SSPT LNTG 83 P10 | 23 | 4.822045 | 101.068901 | MAJLIS |
| 80 | SSPT LNTG 84 P10 | 31 | 4.821951 | 101.069072 | MAJLIS |
| 81 | PKN 5 ABC P9 | 48 | 4.821855 | 101.069329 | MAJLIS |
| 82 | SSPT LNTG 87 P10 | 23 | 4.821668 | 101.069711 | MAJLIS |
| 83 | SS BWG 85 P10 | 29 | 4.821559 | 101.069877 | MAJLIS |
| 84 | SSPT LNTG 89 P10 | 30 | 4.821468 | 101.070116 | MAJLIS |
| 85 | SSPT LNTG 90 P10 | 7 | 4.821355 | 101.070356 | MAJLIS |
| 86 | SSPT LNTG 91 P10 | 22 | 4.821358 | 101.070407 | MAJLIS |
| 87 | SSPT LNTG 92 P10 | 26 | 4.821522 | 101.070504 | MAJLIS |
| 88 | SSPT LNTG 93 P10 | 18 | 4.821707 | 101.070634 | MAJLIS |
| 89 | SSPT LNTG 94 P10 | 17 | 4.821836 | 101.070723 | MAJLIS |
| 90 | SSPT LNTG 95 P10 | 17 | 4.821952 | 101.070803 | MAJLIS |
| 91 | SSPT LNTG 96 P10 | 27 | 4.822014 | 101.070931 | MAJLIS |
| 92 | SSPT LNTG 97 P10 | 26 | 4.822039 | 101.071167 | MAJLIS |
| 93 | SSPT LNTG 98 P10 | 22 | 4.82203 | 101.071394 | MAJLIS |
| 94 | SSPT LNTG 99 P10 | 21 | 4.822067 | 101.071582 | MAJLIS |
| 95 | SSPT LNTG 100 P10 | 31 | 4.822086 | 101.071766 | MAJLIS |
| 96 | SSPT LNTG 101 P10 | 34 | 4.82215 | 101.072027 | MAJLIS |
| 97 | SSPT LNTG 102 P10 | 22 | 4.822197 | 101.072319 | MAJLIS |
| 98 | SSPT LNTG 103 P10 | 22 | 4.822229 | 101.072504 | MAJLIS |
| 99 | SSPT LNTG 104 P10 | 24 | 4.822414 | 101.0725 | MAJLIS |
| 100 | SSPT LNTG 105 P10 | 29 | 4.82261 | 101.072554 | MAJLIS |
| 101 | SSPT LNTG 106 P10 | 25 | 4.822857 | 101.072595 | MAJLIS |
| 102 | SSPT LNTG 107 P10 | 27 | 4.823071 | 101.072632 | MAJLIS |
| 103 | SSPT LNTG 108 P10 | 29 | 4.823285 | 101.072735 | MAJLIS |
| 104 | SSPT LNTG 109 P10 | 16 | 4.823423 | 101.072951 | MAJLIS |
| 105 | SSPT LNTG 110 P10 | 25 | 4.823553 | 101.072924 | MAJLIS |
| 106 | SSPT LNTG 111 P10 | 24 | 4.823765 | 101.072883 | MAJLIS |

APPOINTMENT AS PANEL CONTRACTOR UNDER THE BUMIPUTERA CONTRACTORS PROGRAMME FOR WORKS UNDER SCHEDULE OF RATE (“SOR”) FOR SUPPLY, INSTALLATION AND COMMISSIONING OF FTTX NETWORK INFRASTRUCTURE FOR ALLO TECHNOLOGY SDN BHD

| No. | Pole & Manhole ID | Distance | Latitude | Longitude | Local Authority |
|-----|-------------------|----------|----------|------------|-----------------|
| 107 | SSPT LNTG 112 P10 | 22 | 4.823972 | 101.072868 | MAJLIS |
| 108 | SSPT LNTG 113 P10 | 25 | 4.824164 | 101.072848 | MAJLIS |
| 109 | SSPT LNTG 114 P10 | 18 | 4.824379 | 101.072841 | MAJLIS |
| 110 | SSPT LNTG 115 P10 | 24 | 4.824529 | 101.072883 | MAJLIS |
| 111 | SSPT LNTG 116 P10 | 31 | 4.824715 | 101.072981 | MAJLIS |
| 112 | SSPT LNTG 117 P10 | 16 | 4.824872 | 101.073199 | MAJLIS |
| 113 | SSPT LNTG 118 P10 | 40 | 4.824995 | 101.073254 | MAJLIS |
| 114 | SSPT LNTG 119 P10 | 21 | 4.82531 | 101.073408 | MAJLIS |
| 115 | SSPT LNTG 120 P10 | 19 | 4.825475 | 101.073482 | MAJLIS |
| 116 | SSPT LNTG 121 P10 | 37 | 4.825619 | 101.073549 | MAJLIS |
| 117 | SSPT LNTG 122 P10 | 26 | 4.8259 | 101.073708 | MAJLIS |
| 118 | SSPT LNTG 123 P10 | 29 | 4.826102 | 101.073803 | MAJLIS |
| 119 | SSPT LNTG 124 P10 | 22 | 4.826338 | 101.0739 | MAJLIS |
| 120 | SSPT LNTG 125 P10 | 26 | 4.826443 | 101.07406 | MAJLIS |
| 121 | SSPT LNTG 126 P10 | 25 | 4.826346 | 101.07426 | MAJLIS |
| 122 | SSPT LNTG 127 P10 | 27 | 4.82626 | 101.074463 | MAJLIS |
| 123 | SSPT LNTG 128 P10 | 17 | 4.826158 | 101.074671 | MAJLIS |
| 124 | SSPT LNTG 129 P10 | 22 | 4.826259 | 101.074774 | MAJLIS |
| 125 | SSPT LNTG 130 P10 | 15 | 4.826425 | 101.074861 | MAJLIS |
| 126 | SSPT LNTG 131 P10 | 27 | 4.826443 | 101.074984 | MAJLIS |
| 127 | SSPT LNTG 132 P10 | 25 | 4.826493 | 101.075209 | MAJLIS |
| 128 | SSPT LNTG 133 P10 | 32 | 4.826685 | 101.075302 | MAJLIS |
| 129 | SSPT LNTG 134 P10 | 18 | 4.826949 | 101.075388 | MAJLIS |
| 130 | SSPT LNTG 135 P10 | 27 | 4.8271 | 101.075426 | MAJLIS |
| 131 | SSPT LNTG 136 P10 | 32 | 4.827331 | 101.075472 | MAJLIS |
| 132 | SSPT LNTG 137 P10 | 27 | 4.827601 | 101.075525 | MAJLIS |
| 133 | SSPT LNTG 138 P10 | 28 | 4.827829 | 101.07557 | MAJLIS |
| 134 | SSPT LNTG 139 P10 | 27 | 4.828067 | 101.075626 | MAJLIS |
| 135 | SSPT LNTG 140 P10 | 30 | 4.8283 | 101.075671 | MAJLIS |
| 136 | SSPT LNTG 141 P10 | 26 | 4.828554 | 101.075715 | MAJLIS |
| 137 | SSPT LNTG 142 P10 | 23 | 4.828774 | 101.075762 | MAJLIS |
| 138 | SSPT LNTG 143 P10 | 24 | 4.828962 | 101.075814 | MAJLIS |
| 139 | T04 | 26 | 4.829169 | 101.075844 | MAJLIS |
| 140 | SSPT LNTG 145 P10 | 20 | 4.829383 | 101.075898 | MAJLIS |
| 141 | SSPT LNTG 146 P10 | 29 | 4.829329 | 101.07606 | MAJLIS |
| 142 | SSPT LNTG 147 P10 | 29 | 4.829261 | 101.076302 | MAJLIS |
| 143 | SSPT LNTG 148 P10 | 35 | 4.829197 | 101.076542 | MAJLIS |
| 144 | SSPT LNTG 149 P10 | 31 | 4.829131 | 101.076845 | MAJLIS |
| 145 | SSPT LNTG 150 P10 | 30 | 4.829051 | 101.077107 | MAJLIS |
| 146 | SSPT LNTG 151 P10 | 28 | 4.828991 | 101.077359 | MAJLIS |
| 147 | SSPT LNTG 152 P10 | 35 | 4.828932 | 101.077594 | MAJLIS |
| 148 | SSPT LNTG 153 P10 | 29 | 4.828871 | 101.077895 | MAJLIS |
| 149 | SSPT LNTG 154 P10 | 15 | 4.828802 | 101.078142 | MAJLIS |
| 150 | SSPT LNTG 155 P10 | 39 | 4.828806 | 101.078269 | MAJLIS |
| 151 | SS BWG 153 P10 | 32 | 4.828716 | 101.078596 | MAJLIS |
| 152 | WFFP 1B/3 P9 | 47 | 4.828993 | 101.078604 | MAJLIS |
| 153 | WFFP 1B/4 P9 | 40 | 4.82941 | 101.078625 | MAJLIS |
| 154 | WFFP 1B/5 P9 | 39 | 4.829756 | 101.078697 | MAJLIS |
| 155 | WFFP 1B/6 P9 | 40 | 4.830101 | 101.078713 | MAJLIS |
| 156 | WFFP 1B/7 P9 | 39 | 4.830449 | 101.078745 | MAJLIS |
| 157 | WFFP 1B/8 P9 | 31 | 4.830792 | 101.078773 | MAJLIS |
| 158 | SS BWG 163 P10 | 25 | 4.831064 | 101.078783 | MAJLIS |
| 159 | SS BWG 164 P10 | 18 | 4.83128 | 101.078801 | MAJLIS |

APPOINTMENT AS PANEL CONTRACTOR UNDER THE BUMIPUTERA CONTRACTORS PROGRAMME FOR WORKS UNDER SCHEDULE OF RATE (“SOR”) FOR SUPPLY, INSTALLATION AND COMMISSIONING OF FTTX NETWORK INFRASTRUCTURE FOR ALLO TECHNOLOGY SDN BHD

| No. | Pole & Manhole ID | Distance | Latitude | Longitude | Local Authority |
|-----|-------------------|----------|----------|------------|-----------------|
| 160 | SS BWG 165 P10 | 13 | 4.831435 | 101.078803 | MAJLIS |
| 161 | SS BWG 166 P10 | 29 | 4.831429 | 101.07891 | MAJLIS |
| 162 | SS BWG 167 P10 | 14 | 4.831456 | 101.079158 | MAJLIS |
| 163 | WFP2 8 D P9 | 22 | 4.831481 | 101.079277 | MAJLIS |
| 164 | WFP2 7 D P9 | 35 | 4.831666 | 101.07928 | MAJLIS |
| 165 | WFP2 6 D P9 | 22 | 4.831972 | 101.079285 | MAJLIS |
| 166 | WFP2 5 D P9 | 27 | 4.832161 | 101.079278 | MAJLIS |
| 167 | WFP2 4 D P9 | 35 | 4.832394 | 101.079279 | MAJLIS |
| 168 | WFP2 3 D P9 | 44 | 4.832697 | 101.079275 | MAJLIS |
| 169 | WFP2 2 D P9 | 19 | 4.833082 | 101.079273 | MAJLIS |
| 170 | SS BWG 175 P10 | 21 | 4.833244 | 101.079271 | MAJLIS |
| 171 | WFP2 1 D P9 | 21 | 4.833421 | 101.079298 | MAJLIS |
| 172 | SS BWG 177 P10 | 23 | 4.833553 | 101.079416 | MAJLIS |
| 173 | SS BWG 178 P10 | 30 | 4.833693 | 101.079561 | MAJLIS |
| 174 | SS BWG 179 P10 | 29 | 4.833957 | 101.079569 | MAJLIS |
| 175 | SS BWG 180 P10 | 33 | 4.834209 | 101.079592 | MAJLIS |
| 176 | SS BWG 181 P10 | 31 | 4.834499 | 101.079595 | MAJLIS |
| 177 | SS BWG 182 P10 | 30 | 4.834766 | 101.079604 | MAJLIS |
| 178 | SS BWG 183 P10 | 29 | 4.835029 | 101.079604 | MAJLIS |
| 179 | SS BWG 184 P10 | 27 | 4.835282 | 101.079597 | MAJLIS |
| 180 | XXX P9 | 42 | 4.835269 | 101.079828 | MAJLIS |
| 181 | XXX P9 | 14 | 4.835301 | 101.080197 | MAJLIS |
| 182 | T05 | 16 | 4.835273 | 101.080313 | MAJLIS |
| 183 | TLM A1/21 P9 | 31 | 4.835377 | 101.080395 | MAJLIS |
| 184 | TLM A1/22 A P9 | 35 | 4.835643 | 101.080396 | MAJLIS |
| 185 | TLM A1/22 A P9 | 31 | 4.835946 | 101.080385 | MAJLIS |
| 186 | TLM A1/24 A P9 | 33 | 4.836214 | 101.080397 | MAJLIS |
| 187 | T06 | 47 | 4.836505 | 101.08038 | MAJLIS |
| 188 | MH1 | 60 | 4.836653 | 101.0805 | MAJLIS |
| 189 | MH2 | 25 | 4.836653 | 101.080546 | MAJLIS |
| 190 | T07 | 25 | 4.83692 | 101.080335 | MAJLIS |
| 191 | WFP3 B 15 P9 | 25 | 4.837139 | 101.080343 | MAJLIS |
| 192 | WFP3 B 14 P9 | 31 | 4.837352 | 101.080323 | MAJLIS |
| 193 | T08 | 27 | 4.837623 | 101.080345 | MAJLIS |
| 194 | WFP3 B 12 P9 | 25 | 4.837853 | 101.080316 | MAJLIS |
| 195 | T09 | 28 | 4.83807 | 101.080326 | MAJLIS |
| 196 | WFP3 B 10 P9 | 25 | 4.838311 | 101.080316 | MAJLIS |
| 197 | WFP3 B 8 P9 | 24 | 4.838529 | 101.08032 | MAJLIS |
| 198 | T10 | 25 | 4.838738 | 101.080329 | MAJLIS |
| 199 | WFP A 9 P9 | 26 | 4.838953 | 101.080341 | MAJLIS |
| 200 | WFP3 A 10 P9 | 26 | 4.839179 | 101.080324 | MAJLIS |
| 201 | SS BWG 204 P10 | 31 | 4.839403 | 101.08037 | MAJLIS |
| 202 | SS BWG 205 P10 | 24 | 4.83967 | 101.080407 | MAJLIS |
| 203 | SS BWG 206 P10 | 28 | 4.839878 | 101.080415 | MAJLIS |
| 204 | SS BWG 207 P10 | 29 | 4.840117 | 101.080419 | MAJLIS |
| 205 | SS BWG 208 P10 | 30 | 4.840372 | 101.080414 | MAJLIS |
| 206 | TLM A1/2A/8 P9 | 25 | 4.84063 | 101.080415 | MAJLIS |
| 207 | T11 | 26 | 4.840847 | 101.080408 | MAJLIS |
| 208 | SS BWG 211 P10 | 21 | 4.841068 | 101.080421 | MAJLIS |
| 209 | SS BWG 212 P10 | 24 | 4.841247 | 101.080458 | JKR |
| 210 | SS BWG 213 P10 | 31 | 4.841445 | 101.080516 | JKR |
| 211 | SS BWG 214 P10 | 30 | 4.841711 | 101.080505 | JKR |
| 212 | SS BWG 215 P10 | 18 | 4.841973 | 101.080499 | JKR |
| 213 | SS BWG 216 P10 | 14 | 4.842123 | 101.080496 | JKR |
| 214 | SS BWG 217 P10 | 26 | 4.842137 | 101.080615 | JKR |

| No. | Pole & Manhole ID | Distance | Latitude | Longitude | Local Authority |
|-----|-------------------|----------|----------|------------|-----------------|
| 213 | SS BWG 218 P10 | 27 | 4.842358 | 101.080618 | JKR |
| 214 | SS BWG 219 P10 | 27 | 4.84259 | 101.080611 | JKR |
| 215 | SS BWG 220 P10 | 25 | 4.842826 | 101.080605 | JKR |
| 216 | SS BWG 221 P10 | 23 | 4.843043 | 101.080614 | JKR |
| 217 | SS BWG 222 P10 | 28 | 4.843242 | 101.080641 | JKR |
| 218 | SS BWG 223 P10 | 23 | 4.843466 | 101.080743 | JKR |
| 219 | SS BWG 224 P10 | 26 | 4.843616 | 101.080875 | JKR |
| 220 | SS BWG 225 P10 | 26 | 4.843761 | 101.081042 | JKR |
| 221 | SS BWG 224 P10 | 52 | 4.843616 | 101.080875 | JKR |
| 222 | SS BWG 226 P10 | 28 | 4.843918 | 101.081226 | JKR |
| 223 | SS BWG 227 P10 | 29 | 4.844079 | 101.081405 | JKR |
| 224 | SS BWG 228 P10 | 27 | 4.844258 | 101.081585 | JKR |
| 225 | T12 | 31 | 4.844414 | 101.081755 | JKR |
| 226 | SS BWG 230 P10 | 27 | 4.844591 | 101.081959 | JKR |
| 227 | SS BWG 231 P10 | 29 | 4.844753 | 101.082132 | JKR |
| 228 | SS BWG 232 P10 | 32 | 4.844935 | 101.082306 | JKR |
| 229 | SS BWG 233 P10 | 23 | 4.84515 | 101.082488 | JKR |
| 230 | SS BWG 234 P10 | 30 | 4.845299 | 101.082625 | JKR |
| 231 | SS BWG 235 P10 | 27 | 4.84551 | 101.082773 | JKR |
| 232 | SS BWG 236 P10 | 25 | 4.845692 | 101.082923 | JKR |
| 233 | SS BWG 237 P10 | 27 | 4.845859 | 101.083058 | JKR |
| 234 | SS BWG 238 P10 | 26 | 4.846059 | 101.083185 | JKR |
| 235 | SS BWG 239 P10 | 28 | 4.84627 | 101.083264 | JKR |
| 236 | SS BWG 240 P10 | 25 | 4.846513 | 101.083306 | JKR |
| 237 | SS BWG 241 P10 | 32 | 4.846724 | 101.083334 | JKR |
| 238 | SS BWG 242 P10 | 26 | 4.847001 | 101.083308 | JKR |
| 239 | T13 | 30 | 4.847222 | 101.083302 | JKR |
| 240 | SS BWG 244 P10 | 27 | 4.84748 | 101.083287 | JKR |
| 241 | T14 | 16 | 4.847717 | 101.083282 | JKR |
| 242 | T15 | 28 | 4.84785 | 101.08331 | JKR |
| 243 | T16 | 26 | 4.848092 | 101.083313 | JKR |
| 244 | T17 | 31 | 4.848311 | 101.08327 | JKR |
| 245 | SS BWG 249 P10 | 28 | 4.848551 | 101.083143 | JKR |
| 246 | T18 | 31 | 4.848756 | 101.083019 | JKR |
| 247 | SS BWG 251 P10 | 24 | 4.84898 | 101.08287 | JKR |
| 248 | SS BWG 252 P10 | 28 | 4.849151 | 101.082761 | JKR |
| 249 | SS BWG 253 P10 | 31 | 4.849359 | 101.08263 | JKR |
| 250 | SS BWG 254 P10 | 24 | 4.849581 | 101.082472 | JKR |
| 251 | SS BWG 255 P10 | 29 | 4.84975 | 101.082359 | JKR |
| 252 | SS BWG 256 P10 | 26 | 4.849965 | 101.082231 | JKR |
| 253 | SS BWG 257 P10 | 29 | 4.850155 | 101.082103 | JKR |
| 254 | SS BWG 258 P10 | 24 | 4.850359 | 101.081957 | JKR |
| 255 | SS BWG 259 P10 | 27 | 4.850534 | 101.081848 | JKR |
| 256 | SS BWG 260 P10 | 31 | 4.850726 | 101.081719 | JKR |
| 257 | SS BWG 261 P10 | 25 | 4.850949 | 101.081572 | JKR |
| 258 | SS BWG 262 P10 | 29 | 4.851133 | 101.081453 | JKR |
| 259 | T19 | 30 | 4.851338 | 101.081314 | JKR |
| 260 | SS BWG 264 P10 | 26 | 4.851553 | 101.081163 | JKR |
| 261 | T20 | 25 | 4.851736 | 101.081038 | JKR |
| 262 | SS BWG 266 P10 | 29 | 4.851914 | 101.080922 | JKR |
| 263 | SS BWG 267 P10 | 28 | 4.852122 | 101.080781 | JKR |
| 264 | SS BWG 268 P10 | 27 | 4.852315 | 101.08064 | JKR |
| 265 | SS BWG 269 P10 | 27 | 4.852508 | 101.080507 | JKR |

APPOINTMENT AS PANEL CONTRACTOR UNDER THE BUMIPUTERA CONTRACTORS PROGRAMME FOR WORKS UNDER SCHEDULE OF RATE (“SOR”) FOR SUPPLY, INSTALLATION AND COMMISSIONING OF FTTX NETWORK INFRASTRUCTURE FOR ALLO TECHNOLOGY SDN BHD

| No. | Pole & Manhole ID | Distance | Latitude | Longitude | Local Authority |
|-----|-------------------|----------|----------|------------|-----------------|
| 266 | SS BWG 270 P10 | 28 | 4.852708 | 101.080386 | JKR |
| 267 | SS BWG 271 P10 | 21 | 4.852917 | 101.080255 | JKR |
| 268 | SS BWG 272 P10 | 27 | 4.853071 | 101.080155 | JKR |
| 269 | SS BWG 273 P10 | 30 | 4.853273 | 101.080032 | JKR |
| 270 | SS BWG 274 P10 | 25 | 4.8535 | 101.079907 | JKR |
| 271 | SS BWG 275 P10 | 26 | 4.853708 | 101.079842 | JKR |
| 272 | SS BWG 276 P10 | 27 | 4.853926 | 101.079795 | JKR |
| 273 | SS BWG 277 P10 | 25 | 4.854156 | 101.079786 | JKR |
| 274 | SS BWG 278 P10 | 31 | 4.854373 | 101.079784 | JKR |
| 275 | SS BWG 279 P10 | 26 | 4.854646 | 101.079803 | JKR |
| 276 | SS BWG 280 P10 | 27 | 4.854868 | 101.079821 | JKR |
| 277 | T21 | 29 | 4.855105 | 101.079826 | JKR |
| 278 | SS BWG 282 P10 | 26 | 4.855357 | 101.079835 | JKR |
| 279 | SS BWG 283 P10 | 27 | 4.855585 | 101.079821 | JKR |
| 280 | SS BWG 284 P10 | 27 | 4.855822 | 101.079825 | JKR |
| 281 | SS BWG 285 P10 | 25 | 4.856054 | 101.079833 | JKR |
| 282 | SS BWG 286 P10 | 26 | 4.856269 | 101.079859 | JKR |
| 283 | SS BWG 287 P10 | 26 | 4.856491 | 101.07991 | JKR |
| 284 | SS BWG 288 P10 | 27 | 4.856693 | 101.080001 | JKR |
| 285 | SS BWG 289 P10 | 26 | 4.856899 | 101.080117 | JKR |
| 286 | SS BWG 290 P10 | 29 | 4.857066 | 101.080262 | JKR |
| 287 | SS BWG 291 P10 | 29 | 4.85725 | 101.080428 | JKR |
| 288 | SS BWG 292 P10 | 27 | 4.857424 | 101.080606 | JKR |
| 289 | SS BWG 293 P10 | 26 | 4.857577 | 101.08078 | JKR |
| 290 | SS BWG 294 P10 | 27 | 4.857707 | 101.080961 | JKR |
| 291 | SS BWG 295 P10 | 28 | 4.857849 | 101.081153 | JKR |
| 292 | SS BWG 296 P10 | 31 | 4.857993 | 101.081346 | JKR |
| 293 | SS BWG 297 P10 | 30 | 4.858154 | 101.081564 | JKR |
| 294 | SS BWG 298 P10 | 26 | 4.8583 | 101.081782 | JKR |
| 295 | T22 | 24 | 4.858394 | 101.081984 | JKR |
| 296 | SS BWG 300 P10 | 27 | 4.858477 | 101.082176 | JKR |
| 297 | T23 | 25 | 4.858576 | 101.082389 | JKR |
| 298 | SS BWG 302 P10 | 26 | 4.858668 | 101.082582 | JKR |
| 299 | SS BWG 303 P10 | 25 | 4.858735 | 101.082796 | JKR |
| 300 | SS BWG 304 P10 | 22 | 4.85874 | 101.083013 | JKR |
| 301 | SS BWG 305 P10 | 28 | 4.858655 | 101.083178 | JKR |
| 302 | SS BWG 306 P10 | 27 | 4.858509 | 101.083375 | JKR |
| 303 | SS BWG 307 P10 | 25 | 4.858353 | 101.083545 | JKR |
| 304 | SS BWG 308 P10 | 27 | 4.858202 | 101.083704 | JKR |
| 305 | SS BWG 309 P10 | 28 | 4.858039 | 101.083874 | JKR |
| 306 | SS BWG 310 P10 | 27 | 4.857891 | 101.084072 | JKR |
| 307 | SS BWG 311 P10 | 25 | 4.857757 | 101.084267 | JKR |
| 308 | SS BWG 312 P10 | 27 | 4.857625 | 101.084438 | JKR |
| 309 | SS BWG 313 P10 | 24 | 4.857558 | 101.084664 | JKR |
| 310 | SS BWG 314 P10 | 21 | 4.857546 | 101.084869 | JKR |
| 311 | SS BWG 315 P10 | 23 | 4.857579 | 101.085045 | JKR |
| 312 | SS BWG 316 P10 | 20 | 4.857649 | 101.085235 | JKR |
| 313 | SS BWG 317 P10 | 31 | 4.857792 | 101.085333 | JKR |
| 314 | T24 | 22 | 4.858019 | 101.085475 | JKR |
| 315 | SS BWG 319 P10 | 30 | 4.858177 | 101.085576 | JKR |
| 316 | T25 | 24 | 4.858403 | 101.085709 | JKR |
| 317 | SS BWG 321 P10 | 28 | 4.858561 | 101.085849 | JKR |
| 318 | SS BWG 322 P10 | 26 | 4.858726 | 101.086029 | JKR |

APPOINTMENT AS PANEL CONTRACTOR UNDER THE BUMIPUTERA CONTRACTORS PROGRAMME FOR WORKS UNDER SCHEDULE OF RATE (“SOR”) FOR SUPPLY, INSTALLATION AND COMMISSIONING OF FTTX NETWORK INFRASTRUCTURE FOR ALLO TECHNOLOGY SDN BHD

| No. | Pole & Manhole ID | Distance | Latitude | Longitude | Local Authority |
|-----|-------------------|----------|----------|------------|-----------------|
| 319 | SS BWG 323 P10 | 29 | 4.858882 | 101.086186 | JKR |
| 320 | SS BWG 324 P10 | 25 | 4.859084 | 101.086335 | JKR |
| 321 | SS BWG 325 P10 | 28 | 4.859274 | 101.086433 | JKR |
| 322 | SS BWG 326 P10 | 32 | 4.859496 | 101.08653 | JKR |
| 323 | SS BWG 327 P10 | 28 | 4.859748 | 101.086643 | JKR |
| 324 | SS BWG 328 P10 | 27 | 4.859976 | 101.08672 | JKR |
| 325 | SS BWG 329 P10 | 24 | 4.860195 | 101.086802 | JKR |
| 326 | SS BWG 330 P10 | 29 | 4.860395 | 101.086838 | JKR |
| 327 | SS BWG 331 P10 | 20 | 4.860646 | 101.086829 | JKR |
| 328 | SS BWG 332 P10 | 30 | 4.860817 | 101.086848 | JKR |
| 329 | SS BWG 333 P10 | 24 | 4.861049 | 101.086959 | JKR |
| 330 | SS BWG 334 P10 | 25 | 4.861191 | 101.087115 | JKR |
| 331 | SS BWG 335 P10 | 31 | 4.861332 | 101.087278 | JKR |
| 332 | T26 | 23 | 4.861528 | 101.087458 | JKR |
| 333 | SS BWG 337 P10 | 28 | 4.861679 | 101.087583 | JKR |
| 334 | SS BWG 338 P10 | 23 | 4.861812 | 101.087783 | JKR |
| 335 | SS BWG 339 P10 | 31 | 4.861807 | 101.087985 | JKR |
| 336 | SS BWG 340 P10 | 27 | 4.861749 | 101.088253 | JKR |
| 337 | SS BWG 341 P10 | 25 | 4.861695 | 101.088478 | JKR |
| 338 | SS BWG 342 P10 | 32 | 4.861668 | 101.088693 | JKR |
| 339 | SS BWG 343 P10 | 42 | 4.861679 | 101.088973 | JKR |
| 340 | SS BWG 344 P10 | 22 | 4.861775 | 101.089334 | JKR |
| 341 | SS BWG 345 P10 | 21 | 4.861745 | 101.089517 | JKR |
| 342 | SS BWG 346 P10 | 29 | 4.861684 | 101.089686 | JKR |
| 343 | SS BWG 347 P10 | 26 | 4.861689 | 101.089943 | JKR |
| 344 | SS BWG 348 P10 | 29 | 4.86174 | 101.090165 | JKR |
| 345 | SS BWG 349 P10 | 27 | 4.861794 | 101.09041 | JKR |
| 346 | SS BWG 350 P10 | 27 | 4.861921 | 101.090612 | JKR |
| 347 | SS BWG 351 P10 | 28 | 4.862073 | 101.09079 | JKR |
| 348 | SS BWG 352 P10 | 28 | 4.862241 | 101.090962 | JKR |
| 349 | SS BWG 353 P10 | 27 | 4.862409 | 101.091143 | JKR |
| 350 | T27 | 29 | 4.862583 | 101.091299 | JKR |
| 351 | SS BWG 355 P10 | 26 | 4.862759 | 101.091474 | JKR |
| 352 | SS BWG 356 P10 | 29 | 4.862925 | 101.091626 | JKR |
| 353 | T28 | 27 | 4.86309 | 101.091822 | JKR |
| 354 | SS BWG 358 P10 | 28 | 4.863236 | 101.092004 | JKR |
| 355 | SS BWG 359 P10 | 28 | 4.863377 | 101.092206 | JKR |
| 356 | SS BWG 360 P10 | 28 | 4.863517 | 101.092406 | JKR |
| 357 | SS BWG 361 P10 | 29 | 4.863663 | 101.0926 | JKR |
| 358 | SS BWG 362 P10 | 26 | 4.863808 | 101.092802 | JKR |
| 359 | SS BWG 363 P10 | 28 | 4.86395 | 101.092981 | JKR |
| 360 | SS BWG 364 P10 | 26 | 4.864109 | 101.09317 | JKR |
| 361 | SS BWG 365 P10 | 30 | 4.864288 | 101.093309 | JKR |
| 362 | SS BWG 366 P10 | 30 | 4.864534 | 101.093391 | JKR |
| 363 | SS BWG 367 P10 | 28 | 4.86479 | 101.093442 | JKR |
| 364 | SS BWG 368 P10 | 30 | 4.86503 | 101.093466 | JKR |
| 365 | SS BWG 369 P10 | 29 | 4.865289 | 101.093503 | JKR |
| 366 | SS BWG 370 P10 | 28 | 4.865537 | 101.093561 | JKR |
| 367 | T29 | 25 | 4.865777 | 101.093604 | JKR |
| 368 | SS BWG 372 P10 | 30 | 4.865993 | 101.093611 | JKR |
| 369 | SS BWG 373 P10 | 27 | 4.866257 | 101.093612 | JKR |
| 370 | T30 | 30 | 4.866485 | 101.093648 | JKR |
| 371 | SS BWG 375 P10 | 28 | 4.866748 | 101.093677 | JKR |

APPOINTMENT AS PANEL CONTRACTOR UNDER THE BUMIPUTERA CONTRACTORS PROGRAMME FOR WORKS UNDER SCHEDULE OF RATE (“SOR”) FOR SUPPLY, INSTALLATION AND COMMISSIONING OF FTTX NETWORK INFRASTRUCTURE FOR ALLO TECHNOLOGY SDN BHD

| No. | Pole & Manhole ID | Distance | Latitude | Longitude | Local Authority |
|-----|-------------------|----------|----------|------------|-----------------|
| 372 | SS BWG 376 P10 | 27 | 4.866987 | 101.093706 | JKR |
| 373 | SS BWG 377 P10 | 31 | 4.867223 | 101.093727 | JKR |
| 374 | SS BWG 378 P10 | 27 | 4.867493 | 101.09376 | JKR |
| 375 | SS BWG 379 P10 | 28 | 4.867723 | 101.09378 | JKR |
| 376 | SS BWG 380 P10 | 28 | 4.867965 | 101.093781 | JKR |
| 377 | SS BWG 381 P10 | 30 | 4.868205 | 101.093792 | JKR |
| 378 | SS BWG 382 P10 | 28 | 4.868465 | 101.093796 | JKR |
| 379 | SS BWG 383 P10 | 23 | 4.868707 | 101.0938 | JKR |
| 380 | SS BWG 384 P10 | 22 | 4.868906 | 101.093793 | JKR |
| 381 | SS BWG 385 P10 | 38 | 4.869098 | 101.093787 | JKR |
| 382 | SS BWG 386 P10 | 27 | 4.869419 | 101.093883 | JKR |
| 383 | SS BWG 387 P10 | 26 | 4.869638 | 101.093972 | JKR |
| 384 | SS BWG 388 P10 | 27 | 4.869836 | 101.094073 | JKR |
| 385 | T31 | 27 | 4.870053 | 101.094148 | JKR |
| 386 | SS BWG 390 P10 | 29 | 4.870246 | 101.094277 | JKR |
| 387 | SS BWG 391 P10 | 29 | 4.870437 | 101.094437 | JKR |
| 388 | T32 | 29 | 4.870617 | 101.094608 | JKR |
| 389 | SS BWG 393 P10 | 30 | 4.87081 | 101.094771 | JKR |
| 390 | SS BWG 394 P10 | 25 | 4.871002 | 101.094942 | JKR |
| 391 | SS BWG 395 P10 | 30 | 4.871168 | 101.095085 | JKR |
| 392 | SS BWG 396 P10 | 27 | 4.87138 | 101.095232 | JKR |
| 393 | SS BWG 397 P10 | 28 | 4.871586 | 101.095349 | JKR |
| 394 | SS BWG 398 P10 | 21 | 4.871822 | 101.095422 | JKR |
| 395 | SS BWG 399 P10 | 25 | 4.871996 | 101.095457 | JKR |
| 396 | SS BWG 400 P10 | 17 | 4.872209 | 101.095456 | JKR |
| 397 | SS BWG 401 P10 | 25 | 4.872309 | 101.095557 | JKR |
| 398 | SS BWG 402 P10 | 27 | 4.872519 | 101.095613 | JKR |
| 399 | SS BWG 403 P10 | 26 | 4.87272 | 101.095736 | JKR |
| 400 | SS BWG 404 P10 | 28 | 4.872895 | 101.095873 | JKR |
| 401 | SS BWG 405 P10 | 25 | 4.873089 | 101.096026 | JKR |
| 402 | SS BWG 406 P10 | 37 | 4.87328 | 101.096132 | JKR |
| 403 | T33 | 28 | 4.873574 | 101.096269 | JKR |
| 404 | SS BWG 408 P10 | 31 | 4.873802 | 101.096359 | JKR |
| 405 | SS BWG 409 P10 | 27 | 4.874052 | 101.09645 | JKR |
| 406 | T34 | 28 | 4.874272 | 101.096517 | JKR |
| 407 | SS BWG 411 P10 | 29 | 4.874505 | 101.096597 | JKR |
| 408 | SS BWG 412 P10 | 30 | 4.874758 | 101.096636 | JKR |
| 409 | SS BWG 413 P10 | 20 | 4.875014 | 101.096678 | JKR |
| 410 | SS BWG 414 P10 | 23 | 4.875176 | 101.096744 | JKR |
| 411 | SS BWG 415 P10 | 26 | 4.875338 | 101.096858 | JKR |
| 412 | SS BWG 416 P10 | 24 | 4.875525 | 101.096981 | JKR |
| 413 | SS BWG 417 P10 | 27 | 4.875694 | 101.097099 | JKR |
| 414 | SS BWG 418 P10 | 27 | 4.875878 | 101.097244 | JKR |
| 415 | SS BWG 419 P10 | 22 | 4.876042 | 101.097416 | JKR |
| 416 | SS BWG 420 P10 | 28 | 4.876178 | 101.09755 | JKR |
| 417 | SS BWG 421 P10 | 32 | 4.876359 | 101.097715 | JKR |
| 418 | SS BWG 422 P10 | 23 | 4.876571 | 101.097897 | JKR |
| 419 | SS BWG 423 P10 | 27 | 4.876727 | 101.098023 | JKR |
| 420 | SS BWG 424 P10 | 26 | 4.876906 | 101.098169 | JKR |
| 421 | T35 | 24 | 4.877095 | 101.098296 | JKR |
| 422 | SS BWG 426 P10 | 23 | 4.87726 | 101.098414 | JKR |
| 423 | SS BWG 427 P10 | 25 | 4.877426 | 101.098517 | JKR |
| 424 | SS BWG 428 P10 | 23 | 4.877597 | 101.098654 | JKR |

APPOINTMENT AS PANEL CONTRACTOR UNDER THE BUMIPUTERA CONTRACTORS PROGRAMME FOR WORKS UNDER SCHEDULE OF RATE (“SOR”) FOR SUPPLY, INSTALLATION AND COMMISSIONING OF FTTX NETWORK INFRASTRUCTURE FOR ALLO TECHNOLOGY SDN BHD

| No. | Pole & Manhole ID | Distance | Latitude | Longitude | Local Authority |
|-----|-------------------|----------|----------|------------|-----------------|
| 425 | T36 | 24 | 4.877754 | 101.098768 | JKR |
| 426 | SS BWG 430 P10 | 28 | 4.877949 | 101.098848 | JKR |
| 427 | SS BWG 431 P10 | 30 | 4.878187 | 101.098891 | JKR |
| 428 | SS BWG 432 P10 | 27 | 4.878443 | 101.098942 | JKR |
| 429 | SS BWG 433 P10 | 28 | 4.878677 | 101.098986 | JKR |
| 430 | SS BWG 434 P10 | 28 | 4.878915 | 101.099023 | JKR |
| 431 | SS BWG 435 P10 | 28 | 4.879157 | 101.099065 | JKR |
| 432 | SS BWG 436 P10 | 30 | 4.879396 | 101.099111 | JKR |
| 433 | SS BWG 437 P10 | 28 | 4.879653 | 101.099159 | JKR |
| 434 | SS BWG 438 P10 | 27 | 4.879892 | 101.099214 | JKR |
| 435 | SS BWG 439 P10 | 27 | 4.880114 | 101.099288 | JKR |
| 436 | SS BWG 440 P10 | 28 | 4.880344 | 101.099349 | JKR |
| 437 | SS BWG 441 P10 | 27 | 4.880573 | 101.099425 | JKR |
| 438 | SS BWG 442 P10 | 29 | 4.880795 | 101.099508 | JKR |
| 439 | T37 | 30 | 4.881039 | 101.099572 | JKR |
| 440 | SS BWG 444 P10 | 27 | 4.881282 | 101.099656 | JKR |
| 441 | SS BWG 445 P10 | 26 | 4.881498 | 101.099735 | JKR |
| 442 | T38 | 28 | 4.881721 | 101.099784 | JKR |
| 443 | SS BWG 447 P10 | 27 | 4.881957 | 101.099852 | JKR |
| 444 | SS BWG 448 P10 | 27 | 4.882181 | 101.099902 | JKR |
| 445 | SS BWG 449 P10 | 26 | 4.882414 | 101.09995 | JKR |
| 446 | SS BWG 450 P10 | 27 | 4.88263 | 101.100018 | JKR |
| 447 | SS BWG 451 P10 | 24 | 4.882821 | 101.100152 | JKR |
| 448 | SS BWG 452 P10 | 30 | 4.882958 | 101.100313 | JKR |
| 449 | SS BWG 453 P10 | 27 | 4.88313 | 101.100507 | JKR |
| 450 | SS BWG 454 P10 | 29 | 4.883329 | 101.100631 | JKR |
| 451 | SS BWG 455 P10 | 25 | 4.883558 | 101.100738 | JKR |
| 452 | SS BWG 456 P10 | 31 | 4.883755 | 101.100823 | JKR |
| 453 | SS BWG 457 P10 | 28 | 4.884004 | 101.100933 | JKR |
| 454 | SS BWG 458 P10 | 26 | 4.884229 | 101.101032 | JKR |
| 455 | SS BWG 459 P10 | 23 | 4.884424 | 101.101137 | JKR |
| 456 | SS BWG 460 P10 | 41 | 4.884603 | 101.101212 | JKR |
| 457 | T39 | 31 | 4.884933 | 101.101363 | JKR |
| 458 | SS BWG 462 P10 | 17 | 4.885186 | 101.101466 | JKR |
| 459 | SS BWG 463 P10 | 26 | 4.885332 | 101.101482 | JKR |
| 460 | T40 | 27 | 4.885555 | 101.101439 | JKR |
| 461 | SS BWG 465 P10 | 27 | 4.885789 | 101.101397 | JKR |
| 462 | SS BWG 466 P10 | 29 | 4.886016 | 101.101336 | JKR |
| 463 | SS BWG 467 P10 | 24 | 4.886267 | 101.101306 | JKR |
| 464 | SS BWG 468 P10 | 22 | 4.886476 | 101.101308 | JKR |
| 465 | SS BWG 469 P10 | 28 | 4.886661 | 101.101327 | JKR |
| 466 | SS BWG 470 P10 | 30 | 4.886883 | 101.10142 | JKR |
| 467 | SS BWG 471 P10 | 25 | 4.887096 | 101.101571 | JKR |
| 468 | SS BWG 472 P10 | 29 | 4.887291 | 101.101659 | JKR |
| 469 | SS BWG 473 P10 | 25 | 4.887539 | 101.101693 | JKR |
| 470 | SS BWG 474 P10 | 28 | 4.887744 | 101.101765 | JKR |
| 471 | SS BWG 475 P10 | 27 | 4.887864 | 101.101979 | JKR |
| 472 | SS BWG 476 P10 | 27 | 4.88794 | 101.102205 | JKR |
| 473 | SS BWG 477 P10 | 27 | 4.888085 | 101.102389 | JKR |
| 474 | SS BWG 478 P10 | 28 | 4.888284 | 101.102519 | JKR |
| 475 | T41 | 29 | 4.888496 | 101.102633 | JKR |
| 476 | SS BWG 480 P10 | 28 | 4.888751 | 101.102632 | JKR |
| 477 | SS BWG 481 P10 | 28 | 4.888943 | 101.102488 | JKR |

APPOINTMENT AS PANEL CONTRACTOR UNDER THE BUMIPUTERA CONTRACTORS PROGRAMME FOR WORKS UNDER SCHEDULE OF RATE (“SOR”) FOR SUPPLY, INSTALLATION AND COMMISSIONING OF FTTX NETWORK INFRASTRUCTURE FOR ALLO TECHNOLOGY SDN BHD

| No. | Pole & Manhole ID | Distance | Latitude | Longitude | Local Authority |
|-----|-------------------|----------|----------|------------|-----------------|
| 478 | SS BWG 482 P10 | 26 | 4.889119 | 101.102318 | JKR |
| 479 | SS BWG 483 P10 | 29 | 4.889277 | 101.102152 | JKR |
| 480 | SS BWG 484 P10 | 28 | 4.88948 | 101.10201 | JKR |
| 481 | SS BWG 485 P10 | 27 | 4.889671 | 101.101853 | JKR |
| 482 | SS BWG 486 P10 | 28 | 4.889857 | 101.101713 | JKR |
| 483 | SS BWG 487 P10 | 22 | 4.890052 | 101.101563 | JKR |
| 484 | SS BWG 488 P10 | 27 | 4.890197 | 101.101448 | JKR |
| 485 | SS BWG 489 P10 | 33 | 4.890385 | 101.101308 | JKR |
| 486 | T42 | 31 | 4.890615 | 101.101131 | JKR |
| 487 | SS BWG 491 P10 | 26 | 4.890805 | 101.100945 | JKR |
| 488 | SS BWG 492 P10 | 29 | 4.890931 | 101.10076 | JKR |
| 489 | SS BWG 493 P10 | 23 | 4.891062 | 101.100543 | JKR |
| 490 | SS BWG 494 P10 | 30 | 4.891187 | 101.100386 | JKR |
| 491 | SS BWG 495 P10 | 22 | 4.891342 | 101.100176 | JKR |
| 492 | T43 | 31 | 4.891462 | 101.100024 | JKR |
| 493 | SS BWG 497 P10 | 27 | 4.891626 | 101.099809 | JKR |
| 494 | SS BWG 498 P10 | 29 | 4.891782 | 101.09964 | JKR |
| 495 | SS BWG 499 P10 | 30 | 4.891972 | 101.09948 | JKR |
| 496 | SS BWG 500 P10 | 29 | 4.892193 | 101.099349 | JKR |
| 497 | SS BWG 501 P10 | | 4.892415 | 101.099239 | JKR |
| 498 | SS BWG 502 P10 | | 4.892648 | 101.099132 | JKR |
| 499 | SS BWG 503 P10 | 26 | 4.892877 | 101.099074 | JKR |
| 500 | SS BWG 504 P10 | 25 | 4.893103 | 101.099079 | JKR |
| 501 | SS BWG 505 P10 | 27 | 4.89332 | 101.099049 | JKR |
| 502 | SS BWG 506 P10 | 23 | 4.893552 | 101.099075 | JKR |
| 503 | SS BWG 507 P10 | 29 | 4.893722 | 101.099176 | JKR |
| 504 | T44 | 27 | 4.893931 | 101.099317 | JKR |
| 505 | SS BWG 509 P10 | 28 | 4.894141 | 101.09943 | JKR |
| 506 | SS BWG 510 P10 | 26 | 4.894337 | 101.099568 | JKR |
| 507 | SS BWG 511 P10 | 30 | 4.894504 | 101.099721 | JKR |
| 508 | SS BWG 512 P10 | 25 | 4.894697 | 101.099902 | JKR |
| 509 | SS BWG 513 P10 | 26 | 4.894845 | 101.100062 | JKR |
| 510 | T45 | 30 | 4.894998 | 101.100224 | JKR |
| 511 | SS BWG 515 P10 | 26 | 4.895136 | 101.100443 | JKR |
| 512 | SS BWG 516 P10 | 31 | 4.895182 | 101.100662 | JKR |
| 513 | SS BWG 517 P10 | 28 | 4.895199 | 101.100932 | JKR |
| 514 | SS BWG 518 P10 | 26 | 4.895216 | 101.101174 | JKR |
| 515 | SS BWG 519 P10 | 27 | 4.895319 | 101.101373 | JKR |
| 516 | SS BWG 520 P10 | 31 | 4.895478 | 101.101542 | JKR |
| 517 | SS BWG 521 P10 | 25 | 4.895676 | 101.101724 | JKR |
| 518 | SS BWG 522 P10 | 29 | 4.895866 | 101.101818 | JKR |
| 519 | SS BWG 523 P10 | 26 | 4.896116 | 101.101837 | JKR |
| 520 | SS BWG 524 P10 | 25 | 4.896344 | 101.101834 | JKR |
| 521 | SS BWG 525 P10 | 27 | 4.896563 | 101.101822 | JKR |
| 522 | T46 | 29 | 4.896798 | 101.101799 | JKR |
| 523 | SS BWG 527 P10 | 20 | 4.897054 | 101.101807 | JKR |
| 524 | SS BWG 528 P10 | 26 | 4.897226 | 101.101802 | JKR |
| 525 | SS BWG 529 P10 | 25 | 4.897454 | 101.101787 | JKR |
| 526 | SS BWG 530 P10 | 29 | 4.897673 | 101.101774 | JKR |
| 527 | SS BWG 531 P10 | 28 | 4.897924 | 101.101762 | JKR |
| 528 | SS BWG 532 P10 | 23 | 4.898155 | 101.10169 | JKR |
| 529 | SS BWG 533 P10 | 26 | 4.898351 | 101.101641 | JKR |
| 530 | SS BWG 534 P10 | 21 | 4.898575 | 101.101629 | JKR |
| 531 | SS BWG 535 P10 | 22 | 4.898756 | 101.101641 | JKR |
| 532 | SS BWG 536 P10 | 21 | 4.898912 | 101.101743 | JKR |
| 533 | SS BWG 537 P10 | 36 | 4.899058 | 101.101848 | JKR |

APPOINTMENT AS PANEL CONTRACTOR UNDER THE BUMIPUTERA CONTRACTORS PROGRAMME FOR WORKS UNDER SCHEDULE OF RATE (“SOR”) FOR SUPPLY, INSTALLATION AND COMMISSIONING OF FTTX NETWORK INFRASTRUCTURE FOR ALLO TECHNOLOGY SDN BHD

| No. | Pole & Manhole ID | Distance | Latitude | Longitude | Local Authority |
|-----|-------------------|----------|----------|------------|-----------------|
| 534 | SS BWG 538 P10 | 24 | 4.899323 | 101.102025 | JKR |
| 535 | SS BWG 539 P10 | 31 | 4.899521 | 101.102076 | JKR |
| 536 | SS BWG 540 P10 | 26 | 4.899771 | 101.102169 | JKR |
| 537 | SS BWG 541 P10 | 30 | 4.899978 | 101.10226 | JKR |
| 538 | SS BWG 542 P10 | 28 | 4.900237 | 101.102311 | JKR |
| 539 | SS BWG 543 P10 | 27 | 4.900483 | 101.102288 | JKR |
| 540 | SS BWG 544 P10 | 28 | 4.900711 | 101.102231 | JKR |
| 541 | T47 | 25 | 4.900941 | 101.102157 | JKR |
| 542 | SS BWG 546 P10 | 27 | 4.901139 | 101.102065 | JKR |
| 543 | SS BWG 547 P10 | 25 | 4.901351 | 101.101971 | JKR |
| 544 | SS BWG 548 P10 | 23 | 4.90155 | 101.101878 | JKR |
| 545 | SS BWG 549 P10 | 25 | 4.901726 | 101.101786 | JKR |
| 546 | SS BWG 550 P10 | 31 | 4.901889 | 101.101643 | JKR |
| 547 | T48 | 29 | 4.902049 | 101.101422 | JKR |
| 548 | SS BWG 552 P10 | 25 | 4.902224 | 101.101236 | JKR |
| 549 | SS BWG 553 P10 | 24 | 4.90243 | 101.101179 | JKR |
| 550 | SS BWG 554 P10 | 24 | 4.902638 | 101.101201 | JKR |
| 551 | SS BWG 555 P10 | 26 | 4.902842 | 101.101243 | JKR |
| 552 | SS BWG 556 P10 | 29 | 4.903059 | 101.101288 | JKR |
| 553 | SS BWG 557 P10 | 31 | 4.903304 | 101.101325 | JKR |
| 554 | SS BWG 558 P10 | 23 | 4.903572 | 101.101306 | JKR |
| 555 | SS BWG 559 P10 | 25 | 4.903758 | 101.101229 | JKR |
| 556 | SS BWG 560 P10 | 28 | 4.903909 | 101.101071 | JKR |
| 557 | T49 | 25 | 4.904088 | 101.100901 | JKR |
| 558 | SS BWG 562 P10 | 25 | 4.904257 | 101.100762 | JKR |
| 559 | SS BWG 563 P10 | 25 | 4.904443 | 101.100645 | JKR |
| 560 | SS BWG 564 P10 | 27 | 4.904634 | 101.100537 | JKR |
| 561 | SS BWG 565 P10 | 24 | 4.904839 | 101.100417 | JKR |
| 562 | SS BWG 566 P10 | 28 | 4.905027 | 101.10034 | JKR |
| 563 | SS BWG 567 P10 | 27 | 4.90524 | 101.100215 | JKR |
| 564 | SS BWG 568 P10 | 27 | 4.905455 | 101.10012 | JKR |
| 565 | SS BWG 569 P10 | 24 | 4.905662 | 101.100018 | JKR |
| 566 | T50 | 30 | 4.905811 | 101.099878 | JKR |
| 567 | SS BWG 571 P10 | 22 | 4.905981 | 101.099676 | JKR |
| 568 | SS BWG 572 P10 | 26 | 4.9061 | 101.099527 | JKR |
| 569 | SS BWG 573 P10 | 28 | 4.906225 | 101.099343 | JKR |
| 570 | SS BWG 574 P10 | 27 | 4.906364 | 101.099138 | JKR |
| 571 | SS BWG 575 P10 | 30 | 4.906486 | 101.098937 | JKR |
| 572 | SS BWG 576 P10 | 23 | 4.906513 | 101.098675 | JKR |
| 573 | SS BWG 577 P10 | 26 | 4.906468 | 101.098477 | JKR |
| 574 | SS BWG 578 P10 | 27 | 4.906444 | 101.098257 | JKR |
| 575 | SS BWG 579 P10 | 23 | 4.906436 | 101.098021 | JKR |
| 576 | T51 | 33 | 4.906428 | 101.097822 | JKR |
| 577 | SS BWG 581 P10 | 21 | 4.906423 | 101.097533 | JKR |
| 578 | SS BWG582 P10 | 33 | 4.906447 | 101.097353 | JKR |
| 579 | SS BWG 583 P10 | 28 | 4.906611 | 101.097111 | JKR |
| 580 | SS BWG 584 P10 | 31 | 4.906821 | 101.096987 | JKR |
| 581 | SS BWG 585 P10 | 26 | 4.907091 | 101.096948 | JKR |
| 582 | SS BWG 586 P10 | 31 | 4.907311 | 101.096926 | JKR |
| 583 | SS BWG 587 P10 | 31 | 4.907577 | 101.096917 | JKR |
| 584 | T52 | 29 | 4.907841 | 101.096868 | JKR |
| 585 | SS BWG 589 P10 | 26 | 4.908079 | 101.096799 | JKR |
| 586 | SS BWG 590 P10 | 21 | 4.908259 | 101.09667 | JKR |
| 587 | SS BWG 591 P10 | 25 | 4.908388 | 101.09654 | JKR |
| 588 | SS BWG 592 P10 | 28 | 4.908518 | 101.09637 | JKR |
| 589 | SS BWG 593 P10 | 25 | 4.908665 | 101.096172 | JKR |

APPOINTMENT AS PANEL CONTRACTOR UNDER THE BUMIPUTERA CONTRACTORS PROGRAMME FOR WORKS UNDER SCHEDULE OF RATE (“SOR”) FOR SUPPLY, INSTALLATION AND COMMISSIONING OF FTTX NETWORK INFRASTRUCTURE FOR ALLO TECHNOLOGY SDN BHD

| No. | Pole & Manhole ID | Distance | Latitude | Longitude | Local Authority |
|-----|-------------------|----------|----------|------------|-----------------|
| 590 | SS BWG 594 P10 | 28 | 4.908789 | 101.095995 | JKR |
| 591 | T53 | 32 | 4.908924 | 101.095795 | JKR |
| 592 | SS BWG 596 P10 | 20 | 4.909113 | 101.095586 | JKR |
| 593 | SS BWG 597 P10 | 33 | 4.909252 | 101.095485 | JKR |
| 594 | SS BWG 598 P10 | 23 | 4.909537 | 101.095449 | JKR |
| 595 | SS BWG 599 P10 | 16 | 4.909723 | 101.095379 | JKR |
| 596 | SS BWG 600 P10 | 27 | 4.909856 | 101.09534 | JKR |
| 597 | SS BWG 601 P10 | 19 | 4.910085 | 101.095284 | JKR |
| 598 | SS BWG 602 P10 | 20 | 4.910249 | 101.095265 | JKR |
| 599 | SS BWG 603 P10 | 24 | 4.910416 | 101.095235 | JKR |
| 600 | SS BWG 604 P10 | 24 | 4.910622 | 101.095219 | JKR |
| 601 | SS BWG 605 P10 | 39 | 4.910831 | 101.095216 | JKR |
| 602 | SS BWG 606 P10 | 34 | 4.911153 | 101.095338 | JKR |
| 603 | T54 | 35 | 4.911405 | 101.095503 | JKR |
| 604 | SS BWG 608 P10 | 32 | 4.911669 | 101.095655 | JKR |
| 605 | SS BWG 609 P10 | 22 | 4.911915 | 101.095796 | JKR |
| 606 | SS BWG 610 P10 | 31 | 4.912079 | 101.095885 | JKR |
| 607 | SS BWG 611 P10 | 33 | 4.91232 | 101.096013 | JKR |
| 608 | SS BWG 612 P10 | 20 | 4.912501 | 101.096233 | JKR |
| 609 | SS BWG 613 P10 | 27 | 4.912551 | 101.096401 | JKR |
| 610 | SS BWG 614 P10 | 21 | 4.912573 | 101.096635 | JKR |
| 611 | SS BWG 615 P10 | 28 | 4.912593 | 101.096817 | JKR |
| 612 | T55 | 26 | 4.912703 | 101.097033 | JKR |
| 613 | SS BWG 617 P10 | 26 | 4.912817 | 101.097229 | JKR |
| 614 | SS BWG 618 P10 | 28 | 4.912932 | 101.097422 | JKR |
| 615 | SS BWG 619 P10 | 17 | 4.913 | 101.097658 | JKR |
| 616 | SS BWG 620 P10 | 26 | 4.913051 | 101.097793 | JKR |
| 617 | SS BWG 621 P10 | 27 | 4.913073 | 101.098015 | JKR |
| 618 | SS BWG 622 P10 | 30 | 4.913107 | 101.09825 | JKR |
| 619 | SS BWG 623 P10 | 26 | 4.913168 | 101.098503 | JKR |
| 620 | SS BWG 624 P10 | 22 | 4.913244 | 101.098711 | JKR |
| 621 | T56 | 28 | 4.913314 | 101.09889 | JKR |
| 622 | SS BWG 626 P10 | 31 | 4.913392 | 101.099124 | JKR |
| 623 | SS BWG 627 P10 | 26 | 4.913467 | 101.099386 | JKR |
| 624 | SS BWG 628 P10 | 28 | 4.913511 | 101.099606 | JKR |
| 625 | SS BWG 629 P10 | 28 | 4.913524 | 101.099846 | JKR |
| 626 | SS BWG 630 P10 | 26 | 4.913524 | 101.100093 | JKR |
| 627 | SS BWG 631 P10 | 24 | 4.913523 | 101.100316 | JKR |
| 628 | SS BWG 632 P10 | 22 | 4.913566 | 101.100523 | JKR |
| 629 | SS BWG 633 P10 | 22 | 4.913638 | 101.100699 | JKR |
| 630 | SS BWG 634 P10 | 26 | 4.913742 | 101.100859 | JKR |
| 631 | T57 | 25 | 4.913889 | 101.101032 | JKR |
| 632 | SS BWG 636 P10 | 29 | 4.914044 | 101.101177 | JKR |
| 633 | SS BWG 637 P10 | 27 | 4.914236 | 101.101347 | JKR |
| 634 | SS BWG 638 P10 | 48 | 4.91439 | 101.101519 | JKR |
| 635 | SS BWG 640 P10 | 26 | 4.914483 | 101.101929 | JKR |
| 636 | SS BWG 639 P10 | 46 | 4.914446 | 101.101704 | JKR |
| 637 | SS BWG 641 P10 | 26 | 4.914516 | 101.102101 | JKR |
| 638 | SS BWG 642 P10 | 27 | 4.914623 | 101.102304 | JKR |
| 639 | SS BWG 643 P10 | 27 | 4.91477 | 101.102481 | JKR |
| 640 | T58 | 26 | 4.914941 | 101.102644 | JKR |
| 641 | SS BWG 645 P10 | 29 | 4.915119 | 101.102785 | JKR |
| 642 | SS BWG 646 P10 | 29 | 4.915321 | 101.102943 | JKR |
| 643 | SS BWG 647 P10 | 26 | 4.915532 | 101.103083 | JKR |
| 644 | SS BWG 648 P10 | 25 | 4.915718 | 101.103216 | JKR |
| 645 | SS BWG 649 P10 | 26 | 4.915917 | 101.103309 | JKR |

APPOINTMENT AS PANEL CONTRACTOR UNDER THE BUMIPUTERA CONTRACTORS PROGRAMME FOR WORKS UNDER SCHEDULE OF RATE (“SOR”) FOR SUPPLY, INSTALLATION AND COMMISSIONING OF FTTX NETWORK INFRASTRUCTURE FOR ALLO TECHNOLOGY SDN BHD

| No. | Pole & Manhole ID | Distance | Latitude | Longitude | Local Authority |
|-----|-------------------|----------|----------|------------|-----------------|
| 646 | SS BWG 650 P10 | 27 | 4.916141 | 101.103354 | JKR |
| 647 | SS BWG 651 P10 | 32 | 4.916369 | 101.103393 | JKR |
| 648 | SS BWG 652 P10 | 30 | 4.916644 | 101.103413 | JKR |
| 649 | T59 | 33 | 4.916898 | 101.103452 | JKR |
| 650 | SS BWG 654 P10 | 31 | 4.917187 | 101.10349 | JKR |
| 651 | SS BWG 655 P10 | 21 | 4.917449 | 101.103538 | JKR |
| 652 | SS BWG 656 P10 | 30 | 4.917633 | 101.103549 | JKR |
| 653 | SS BWG 657 P10 | 31 | 4.917895 | 101.10357 | JKR |
| 654 | SS BWG 658 P10 | 29 | 4.918163 | 101.103597 | JKR |
| 655 | SS BWG 659 P10 | 26 | 4.918399 | 101.103683 | JKR |
| 656 | SS BWG 660 P10 | 28 | 4.918617 | 101.103738 | JKR |
| 657 | SS BWG 661 P10 | 23 | 4.918862 | 101.10377 | JKR |
| 658 | T60 | 29 | 4.91906 | 101.103757 | JKR |
| 659 | SS BWG 663 P10 | 28 | 4.919311 | 101.10374 | JKR |
| 660 | SS BWG 664 P10 | 23 | 4.919547 | 101.103697 | JKR |
| 661 | SS BWG 665 P10 | 24 | 4.919743 | 101.10366 | JKR |
| 662 | SS BWG 666 P10 | 29 | 4.919938 | 101.103604 | JKR |
| 663 | SS BWG 667 P10 | 26 | 4.920183 | 101.103538 | JKR |
| 664 | SS BWG 668 P10 | 25 | 4.920402 | 101.10349 | JKR |
| 665 | SS BWG 669 P10 | 29 | 4.920594 | 101.103383 | JKR |
| 666 | SS BWG 670 P10 | 34 | 4.920823 | 101.103274 | JKR |
| 667 | T61 | 28 | 4.921106 | 101.103172 | JKR |
| 668 | SS BWG 672 P10 | 30 | 4.921345 | 101.103231 | JKR |
| 669 | SS BWG 673 P10 | 22 | 4.921591 | 101.103307 | JKR |
| 670 | SS BWG 674 P10 | 28 | 4.921779 | 101.103331 | JKR |
| 671 | SS BWG 675 P10 | 23 | 4.92202 | 101.103304 | JKR |
| 672 | SS BWG 676 P10 | 25 | 4.92222 | 101.103279 | JKR |
| 673 | SS BWG 677 P10 | 27 | 4.92243 | 101.103245 | JKR |
| 674 | SS BWG 678 P10 | 26 | 4.922666 | 101.103213 | JKR |
| 675 | SS BWG 679 P10 | 24 | 4.922889 | 101.10317 | JKR |
| 676 | SS BWG 680 P10 | 28 | 4.923074 | 101.103073 | JKR |
| 677 | SS BWG 681 P10 | 24 | 4.923272 | 101.102931 | JKR |
| 678 | SS BWG 682 P10 | 33 | 4.923449 | 101.102829 | JKR |
| 679 | SS BWG 683 P10 | 27 | 4.923724 | 101.102744 | JKR |
| 680 | SS BWG 684 P10 | 28 | 4.923954 | 101.102701 | JKR |
| 681 | SS BWG 685 P10 | 30 | 4.924197 | 101.10269 | JKR |
| 682 | SS BWG 686 P10 | 37 | 4.924462 | 101.1027 | JKR |
| 683 | SS BWG 687 P10 | 30 | 4.924782 | 101.102729 | JKR |
| 684 | SS BWG 688 P10 | 32 | 4.925042 | 101.102747 | JKR |
| 685 | T62 | 35 | 4.925318 | 101.102791 | JKR |
| 686 | SS BWG 690 P10 | 32 | 4.925626 | 101.102817 | JKR |
| 687 | SS BWG 691 P10 | 32 | 4.925905 | 101.102845 | JKR |
| 688 | SS BWG 692 P10 | 28 | 4.926182 | 101.102859 | JKR |
| 689 | SS BWG 693 P10 | 30 | 4.926419 | 101.102892 | JKR |
| 690 | SS BWG 694 P10 | 26 | 4.926676 | 101.102929 | JKR |
| 691 | SS BWG 695 P10 | 28 | 4.926897 | 101.102975 | JKR |
| 692 | SS BWG 969 P10 | 28 | 4.927133 | 101.103023 | JKR |
| 693 | T63 | 24 | 4.927359 | 101.103102 | JKR |
| 694 | SS BWG 698 P10 | 32 | 4.927557 | 101.103153 | JKR |
| 695 | SS BWG 699 P10 | 20 | 4.927814 | 101.103254 | JKR |
| 696 | SS BWG 700 P10 | 27 | 4.927979 | 101.103284 | JKR |
| 697 | SS BWG 701 P10 | 28 | 4.928212 | 101.103306 | JKR |
| 698 | SS BWG 702 P10 | 23 | 4.928455 | 101.103296 | JKR |
| 699 | SS BWG 703 P10 | 22 | 4.928648 | 101.103282 | JKR |
| 700 | SS BWG 704 P10 | 26 | 4.928817 | 101.103207 | JKR |

APPOINTMENT AS PANEL CONTRACTOR UNDER THE BUMIPUTERA CONTRACTORS PROGRAMME FOR WORKS UNDER SCHEDULE OF RATE (“SOR”) FOR SUPPLY, INSTALLATION AND COMMISSIONING OF FTTX NETWORK INFRASTRUCTURE FOR ALLO TECHNOLOGY SDN BHD

| No. | Pole & Manhole ID | Distance | Latitude | Longitude | Local Authority |
|-----|-------------------|----------|----------|------------|-----------------|
| 701 | SS BWG 705 P10 | 29 | 4.929002 | 101.103074 | JKR |
| 702 | T64 | 27 | 4.929167 | 101.102881 | JKR |
| 703 | SS BWG 707 P10 | 28 | 4.929316 | 101.102696 | JKR |
| 704 | SS BWG 708 P10 | 24 | 4.929488 | 101.102521 | JKR |
| 705 | SS BWG 709 P10 | 29 | 4.929674 | 101.102432 | JKR |
| 706 | SS BWG 710 P10 | 32 | 4.92992 | 101.10239 | JKR |
| 707 | SS BWG 711 P10 | 30 | 4.930194 | 101.102408 | JKR |
| 708 | SS BWG 712 P10 | 24 | 4.930455 | 101.102403 | JKR |
| 709 | SS BWG 713 P10 | 29 | 4.930662 | 101.102427 | JKR |
| 710 | SS BWG 714 P10 | 25 | 4.930909 | 101.102471 | JKR |
| 711 | T65 | 33 | 4.931122 | 101.10251 | JKR |
| 712 | SS BWG 716 P10 | 29 | 4.931408 | 101.102558 | JKR |
| 713 | T66 | 28 | 4.931658 | 101.102567 | JKR |
| 714 | SS BWG 718 P10 | 25 | 4.931899 | 101.102518 | JKR |
| 715 | T67 | 32 | 4.932101 | 101.102437 | JKR |
| 716 | SS BWG 720 P10 | 26 | 4.932357 | 101.102327 | JKR |
| 717 | SS BWG 721 P10 | 26 | 4.932564 | 101.102231 | JKR |
| 718 | SS BWG 722 P10 | 31 | 4.93277 | 101.102148 | JKR |
| 719 | SS BWG 723 P10 | 21 | 4.933024 | 101.102067 | JKR |
| 720 | LTG A 25/1 P9 | 32 | 4.933193 | 101.102008 | JKR |
| 721 | SS BWG 725 P10 | 30 | 4.933458 | 101.101912 | JKR |
| 722 | SS BWG 726 P10 | 30 | 4.933693 | 101.101799 | JKR |
| 723 | SS BWG 727 P10 | 30 | 4.933929 | 101.101691 | JKR |
| 724 | SS BWG 728 P10 | 33 | 4.934173 | 101.101594 | JKR |
| 725 | SS BWG 729 P10 | 33 | 4.934447 | 101.101519 | JKR |
| 726 | SS BWG 730 P10 | 31 | 4.934726 | 101.101464 | JKR |
| 727 | SS BWG 731 P10 | 21 | 4.93499 | 101.101412 | JKR |
| 728 | SS BWG 732 P10 | 26 | 4.935167 | 101.101414 | JKR |
| 729 | SS BWG 733 P10 | 29 | 4.935381 | 101.101359 | JKR |
| 730 | SS BWG 734 P10 | 22 | 4.935627 | 101.101313 | JKR |
| 731 | SS BWG 735 P10 | 22 | 4.935815 | 101.101304 | JKR |
| 732 | SS BWG 736 P10 | 33 | 4.935965 | 101.101414 | JKR |
| 733 | SS BWG 737 P10 | 30 | 4.936137 | 101.101643 | JKR |
| 734 | SS BWG 738 P10 | 32 | 4.936257 | 101.10188 | JKR |
| 735 | SS BWG 739 P10 | 39 | 4.93633 | 101.102153 | JKR |
| 736 | SS BWG 740 P10 | 39 | 4.936503 | 101.102446 | JKR |
| 737 | SS BWG 741 P10 | 22 | 4.936702 | 101.102725 | JKR |
| 738 | SS BWG 742 P10 | 25 | 4.936794 | 101.102891 | JKR |
| 739 | SS BWG 743 P10 | 38 | 4.936905 | 101.10308 | JKR |
| 740 | T68 | 30 | 4.937237 | 101.1031 | JKR |
| 741 | T69 | 57 | 4.936989 | 101.103194 | JKR |
| 742 | LTG A 7/2 P9 | 48 | 4.937456 | 101.103001 | JKR |
| 743 | LTG A 7/3 P9 | 38 | 4.937717 | 101.102665 | JKR |
| 744 | T70 | 57 | 4.937905 | 101.102393 | JKR |
| 745 | T71 | 85 | 4.938142 | 101.10195 | JKR |
| 746 | T72 | 48 | 4.938487 | 101.101273 | JKR |
| 747 | SD B 12 P9 | 46 | 4.938661 | 101.100886 | JKR |
| 748 | SD B 13 P9 | 46 | 4.938825 | 101.100511 | JKR |
| 749 | SD B 14 P9 | 43 | 4.938988 | 101.100143 | JKR |
| 750 | SD B 15 P9 | 45 | 4.939138 | 101.099799 | JKR |
| 751 | SD B 16 P9 | 49 | 4.93929 | 101.099432 | JKR |
| 752 | SD B 17 P9 | 36 | 4.939468 | 101.099037 | JKR |
| 753 | SD B 18 P9 | 38 | 4.939585 | 101.098741 | JKR |
| 754 | SD B 19 P9 | 31 | 4.939632 | 101.098409 | JKR |
| 755 | SD B 20 P9 | 45 | 4.939684 | 101.098146 | JKR |
| 701 | SS BWG 705 P10 | 29 | 4.929002 | 101.103074 | JKR |

APPOINTMENT AS PANEL CONTRACTOR UNDER THE BUMIPUTERA CONTRACTORS PROGRAMME FOR WORKS UNDER SCHEDULE OF RATE (“SOR”) FOR SUPPLY, INSTALLATION AND COMMISSIONING OF FTTX NETWORK INFRASTRUCTURE FOR ALLO TECHNOLOGY SDN BHD

| No. | Pole & Manhole ID | Distance | Latitude | Longitude | Local Authority |
|-----|----------------------|----------|----------|------------|-----------------|
| 756 | SD B 21 P9 | 33 | 4.939675 | 101.097747 | JKR |
| 757 | SD B 22 P9 | 33 | 4.939683 | 101.097457 | JKR |
| 758 | SD B 23 P9 | 33 | 4.939625 | 101.097174 | JKR |
| 759 | SD B 24 P9 | 34 | 4.939607 | 101.096888 | JKR |
| 760 | SD B 25 P9 | 32 | 4.939576 | 101.096596 | JKR |
| 761 | SD B 26 P9 | 25 | 4.93955 | 101.096321 | JKR |
| 762 | SD B 27 P9 | 40 | 4.93953 | 101.096101 | JKR |
| 763 | SD B 28 P9 | 34 | 4.939483 | 101.095754 | JKR |
| 764 | SD B 29 P9 | 39 | 4.939406 | 101.095465 | JKR |
| 765 | SD B 30 P9 | 38 | 4.939298 | 101.09514 | JKR |
| 766 | T73 | 21 | 4.939163 | 101.094836 | JKR |
| 767 | SS-SD SS LAFL 30 P10 | 28 | 4.939093 | 101.09467 | JKR |
| 768 | SS-SD SS LAFL 31 P10 | 27 | 4.938961 | 101.094468 | JKR |
| 769 | SS-SD SS LAFL 32 P10 | 24 | 4.938852 | 101.094256 | JKR |
| 770 | SS-SD SS LAFL 33 P10 | 29 | 4.938754 | 101.094076 | JKR |
| 771 | SS-SD SS LAFL 34 P10 | 25 | 4.938638 | 101.093848 | JKR |
| 772 | SS-SD SS LAFL 35 P10 | 27 | 4.938531 | 101.093656 | JKR |
| 773 | SS-SD SS LAFL 36 P10 | 27 | 4.938432 | 101.093448 | JKR |
| 774 | SS-SD SS LAFL 37 P10 | 29 | 4.938316 | 101.093242 | JKR |
| 775 | SS-SD SS LAFL 38 P10 | 27 | 4.938188 | 101.093027 | JKR |
| 776 | SS-SD SS LAFL 39 P10 | 29 | 4.938071 | 101.092829 | JKR |
| 777 | SS-SD SS LAFL 40 P10 | 27 | 4.937951 | 101.092608 | JKR |
| 778 | SS-SD SS LAFL 41 P10 | 27 | 4.937844 | 101.0924 | JKR |
| 779 | SS-SD SS LAFL 42 P10 | 26 | 4.937734 | 101.092189 | JKR |
| 780 | SS-SD SS LAFL 43 P10 | 28 | 4.937621 | 101.091999 | JKR |
| 781 | SS-SD SS LAFL 44 P10 | 36 | 4.937496 | 101.091788 | JKR |
| 782 | SS-SD SS LAFL 45 P10 | 26 | 4.937367 | 101.091499 | JKR |
| 783 | SS-SD SS LAFL 46 P10 | 24 | 4.937241 | 101.091308 | JKR |
| 784 | SS-SD SS LAFL 47 P10 | 29 | 4.937144 | 101.091124 | JKR |
| 785 | SS-SD SS LAFL 48 P10 | 26 | 4.937002 | 101.090914 | JKR |
| 786 | SS-SD SS LAFL 49 P10 | 28 | 4.936906 | 101.090705 | JKR |
| 787 | SS-SD SS LAFL 50 P10 | 27 | 4.936802 | 101.090486 | JKR |
| 788 | SS-SD SS LAFL 51 P10 | 24 | 4.936688 | 101.090282 | JKR |
| 789 | SS-SD SS LAFL 52 P10 | 27 | 4.936557 | 101.090118 | JKR |
| 790 | SS-SD SS LAFL 53 P10 | 26 | 4.936465 | 101.089906 | JKR |
| 791 | SS-SD SS LAFL 54 P10 | 27 | 4.936339 | 101.089723 | JKR |
| 792 | SS-SD SS LAFL 55 P10 | 29 | 4.936234 | 101.089509 | JKR |
| 793 | SS-SD SS LAFL 56 P10 | 25 | 4.936123 | 101.089285 | JKR |
| 794 | SS-SD SS LAFL 57 P10 | 28 | 4.936005 | 101.089099 | JKR |
| 795 | SS-SD SS LAFL 58 P10 | 26 | 4.935882 | 101.08889 | JKR |
| 796 | SS-SD SS LAFL 59 P10 | 25 | 4.935749 | 101.088708 | JKR |
| 797 | SS-SD SS LAFL 60 P10 | 26 | 4.935649 | 101.088516 | JKR |
| 798 | SS-SD SS LAFL 61 P10 | 27 | 4.935554 | 101.088308 | JKR |
| 799 | SS-SD SS LAFL 62 P10 | 27 | 4.935433 | 101.08811 | JKR |
| 800 | SS-SD SS LAFL 63 P10 | 23 | 4.935305 | 101.087909 | JKR |
| 801 | SS-SD SS LAFL 64 P10 | 24 | 4.935184 | 101.087751 | JKR |
| 802 | T74 | 17 | 4.935083 | 101.08757 | JKR |
| 803 | T75 | 4 | 4.934983 | 101.087467 | JKR |
| 804 | T76 | 28 | 4.934962 | 101.08749 | JKR |
| 805 | SS LAFL PBFL 2 P10 | 27 | 4.934828 | 101.087286 | JKR |
| 806 | SS LAFL PBFL 3 P10 | 29 | 4.934647 | 101.087131 | JKR |
| 807 | SS LAFL PBFL 4 P10 | 26 | 4.934456 | 101.086973 | JKR |
| 808 | SS LAFL PBFL 5 P10 | 19 | 4.934266 | 101.086851 | JKR |
| 809 | SS LAFL PBFL 6 P10 | 27 | 4.934124 | 101.08678 | JKR |
| 810 | SS LAFL PBFL 7 P10 | 27 | 4.933896 | 101.086727 | JKR |

APPOINTMENT AS PANEL CONTRACTOR UNDER THE BUMIPUTERA CONTRACTORS PROGRAMME FOR WORKS UNDER SCHEDULE OF RATE (“SOR”) FOR SUPPLY, INSTALLATION AND COMMISSIONING OF FTTX NETWORK INFRASTRUCTURE FOR ALLO TECHNOLOGY SDN BHD

| No. | Pole & Manhole ID | Distance | Latitude | Longitude | Local Authority |
|-----|---------------------|----------|----------|------------|-----------------|
| 811 | SS LAFL PBFL 8 P10 | 31 | 4.933665 | 101.086692 | JKR |
| 812 | SS LAFL PBFL 9 P10 | 29 | 4.933393 | 101.086715 | JKR |
| 813 | SS LAFL PBFL 10 P10 | 28 | 4.933144 | 101.086699 | JKR |
| 814 | SS LAFL PBFL 11 P10 | 26 | 4.932901 | 101.086713 | JKR |
| 815 | SS LAFL PBFL 12 P10 | 29 | 4.932673 | 101.086714 | JKR |
| 816 | SS LAFL PBFL 13 P10 | 25 | 4.932423 | 101.086688 | JKR |
| 817 | SS LAFL PBFL 14 P10 | 29 | 4.932208 | 101.086663 | JKR |
| 818 | SS LAFL PBFL 15 P10 | 29 | 4.931953 | 101.086643 | JKR |
| 819 | SS LAFL PBFL 16 P10 | 31 | 4.931698 | 101.086647 | JKR |
| 820 | SS LAFL PBFL 17 P10 | 29 | 4.931433 | 101.086621 | JKR |
| 821 | SS LAFL PBFL 18 P10 | 26 | 4.931179 | 101.086607 | JKR |
| 822 | T77 | 30 | 4.93095 | 101.086619 | JKR |
| 823 | SS LAFL PBFL 20 P10 | 29 | 4.930691 | 101.086596 | JKR |
| 824 | SS LAFL PBFL 21 P10 | 32 | 4.930438 | 101.086575 | JKR |
| 825 | SS LAFL PBFL 22 P10 | 30 | 4.930157 | 101.086574 | JKR |
| 826 | SS LAFL PBFL 23 P10 | 29 | 4.929898 | 101.086562 | JKR |
| 827 | SS LAFL PBFL 24 P10 | 30 | 4.929645 | 101.086543 | JKR |
| 828 | SS LAFL PBFL 25 P10 | 29 | 4.929383 | 101.086536 | JKR |
| 829 | SS LAFL PBFL 26 P10 | 30 | 4.929138 | 101.086498 | JKR |
| 830 | SS LAFL PBFL 27 P10 | 29 | 4.928898 | 101.086392 | JKR |
| 831 | SS LAFL PBFL 28 P10 | 29 | 4.928676 | 101.086279 | JKR |
| 832 | SS LAFL PBFL 29 P10 | 29 | 4.928454 | 101.08616 | JKR |
| 833 | SS LAFL PBFL 30 P10 | 30 | 4.928239 | 101.086035 | JKR |
| 834 | SS LAFL PBFL 31 P10 | 30 | 4.928025 | 101.085884 | JKR |
| 835 | SS LAFL PBFL 32 P10 | 29 | 4.927819 | 101.08573 | JKR |
| 836 | SS LAFL PBFL 33 P10 | 28 | 4.927627 | 101.085571 | JKR |
| 837 | SS LAFL PBFL 34 P10 | 30 | 4.927445 | 101.085414 | JKR |
| 838 | SS LAFL PBFL 35 P10 | 27 | 4.927259 | 101.085236 | JKR |
| 839 | T78 | 30 | 4.927082 | 101.085076 | JKR |
| 840 | SS LAFL PBFL 37 P10 | 26 | 4.926905 | 101.084889 | JKR |
| 841 | SS LAFL PBFL 38 P10 | 29 | 4.926726 | 101.084748 | JKR |
| 842 | SS LAFL PBFL 39 P10 | 24 | 4.926594 | 101.084534 | JKR |
| 843 | SS LAFL PBFL 40 P10 | 29 | 4.926452 | 101.084382 | JKR |
| 844 | SS LAFL PBFL 41 P10 | 27 | 4.926328 | 101.084166 | JKR |
| 845 | SS LAFL PBFL 42 P10 | 29 | 4.926189 | 101.083978 | JKR |
| 846 | SS LAFL PBFL 43 P10 | 30 | 4.926094 | 101.083746 | JKR |
| 847 | SS LAFL PBFL 44 P10 | 27 | 4.925966 | 101.083523 | JKR |
| 848 | SS LAFL PBFL 45 P10 | 31 | 4.925845 | 101.083324 | JKR |
| 849 | SS LAFL PBFL 46 P10 | 28 | 4.925701 | 101.083098 | JKR |
| 850 | SS LAFL PBFL 47 P10 | 33 | 4.925608 | 101.082876 | JKR |
| 851 | SS LAFL PBFL 48 P10 | 30 | 4.925458 | 101.082632 | JKR |
| 852 | SS LAFL PBFL 49 P10 | 28 | 4.925344 | 101.082396 | JKR |
| 853 | SS LAFL PBFL 50 P10 | 29 | 4.925207 | 101.082191 | JKR |
| 854 | SS LAFL PBFL 51 P10 | 28 | 4.925081 | 101.081975 | JKR |
| 855 | SS LAFL PBFL 52 P10 | 30 | 4.924979 | 101.081749 | JKR |
| 856 | T79 | 28 | 4.924849 | 101.081527 | JKR |
| 857 | SS LAFL PBFL 54 P10 | 30 | 4.924751 | 101.081305 | JKR |
| 858 | T80 | 28 | 4.924636 | 101.081071 | JKR |
| 859 | T81 | 17 | 4.924536 | 101.080852 | JKR |
| 860 | T82 | 22 | 4.92446 | 101.080734 | JKR |
| 861 | T83 | 29 | 4.924403 | 101.080549 | JKR |
| 862 | PBFL FL1 4 P10 | 40 | 4.924344 | 101.080303 | JKR |
| 863 | T84 | 35 | 4.924213 | 101.079977 | JKR |
| 864 | PBFL FL1 6 P10 | 34 | 4.924156 | 101.07968 | JKR |

APPOINTMENT AS PANEL CONTRACTOR UNDER THE BUMIPUTERA CONTRACTORS PROGRAMME FOR WORKS UNDER SCHEDULE OF RATE ("SOR") FOR SUPPLY, INSTALLATION AND COMMISSIONING OF FTTX NETWORK INFRASTRUCTURE FOR ALLO TECHNOLOGY SDN BHD

| No. | Pole & Manhole ID | Distance | Latitude | Longitude | Local Authority |
|-----|-------------------|----------|----------|------------|-----------------|
| 865 | PBFL FL1 7 P10 | 30 | 4.924031 | 101.079409 | JKR |
| 866 | PBFL FL1 8 P10 | 31 | 4.924002 | 101.079148 | JKR |
| 867 | PBFL FL1 9 P10 | 32 | 4.924019 | 101.078874 | JKR |
| 868 | PBFL FL1 10 P10 | 29 | 4.924047 | 101.078597 | JKR |
| 869 | PBFL FL1 11 P10 | 33 | 4.924098 | 101.07835 | JKR |
| 870 | PBFL FL1 12 P10 | 19 | 4.924134 | 101.078061 | JKR |
| 871 | T85 | 14 | 4.924165 | 101.077905 | JKR |
| 872 | T86 | 32 | 4.924189 | 101.077789 | JKR |
| 873 | PBFL FL1 14 P10 | 25 | 4.924221 | 101.077514 | JKR |
| 874 | PBFL FL1 15 P10 | 23 | 4.924267 | 101.077301 | JKR |
| 875 | PBFL FL1 16 P10 | 36 | 4.924302 | 101.077103 | JKR |
| 876 | PBFL FL1 17 P10 | 25 | 4.924357 | 101.076795 | JKR |
| 877 | PBFL FL1 18 P10 | 29 | 4.924384 | 101.076576 | JKR |
| 878 | PBFL FL1 19 P10 | 30 | 4.924421 | 101.076327 | JKR |
| 879 | PBFL FL1 20 P10 | 26 | 4.924449 | 101.07607 | JKR |
| 880 | PBFL FL1 21 P10 | 28 | 4.9245 | 101.075847 | JKR |
| 881 | PBFL FL1 22 P10 | 31 | 4.92454 | 101.075605 | JKR |
| 882 | PBFL FL1 23 P10 | 30 | 4.924569 | 101.075334 | JKR |
| 883 | PBFL FL1 24 P10 | 28 | 4.924597 | 101.075074 | JKR |
| 884 | PBFL FL1 25 P10 | 27 | 4.924622 | 101.074831 | JKR |
| 885 | PBFL FL1 26 P10 | 26 | 4.924648 | 101.074595 | JKR |
| 886 | PBFL FL1 27 P10 | 29 | 4.924677 | 101.07437 | JKR |
| 887 | PBFL FL1 28 P10 | 28 | 4.924673 | 101.074118 | JKR |
| 888 | PBFL FL1 29 P10 | 27 | 4.924693 | 101.073879 | JKR |
| 889 | PBFL FL1 30 P10 | 31 | 4.92466 | 101.073644 | JKR |
| 890 | PBFL FL1 31 P10 | 36 | 4.924626 | 101.073378 | JKR |
| 891 | T87 | 32 | 4.924602 | 101.073066 | JKR |
| 892 | PBFL FL1 33 P10 | 26 | 4.924568 | 101.072789 | JKR |
| 893 | PBFL FL1 34 P10 | 28 | 4.924549 | 101.072567 | JKR |
| 894 | PBFL FL1 35 P10 | 28 | 4.924509 | 101.072325 | JKR |
| 895 | PBFL FL1 36 P10 | 24 | 4.924495 | 101.072079 | JKR |
| 896 | PBFL FL1 37 P10 | 32 | 4.924468 | 101.071873 | JKR |
| 897 | PBFL FL1 38 P10 | 27 | 4.924435 | 101.071599 | JKR |
| 898 | PBFL FL1 39 P10 | 26 | 4.924413 | 101.071365 | JKR |
| 899 | PBFL FL1 40 P10 | 28 | 4.924395 | 101.071137 | JKR |
| 900 | PBFL FL1 41 P10 | 27 | 4.924348 | 101.070898 | JKR |
| 901 | PBFL FL1 42 P10 | 28 | 4.924295 | 101.070665 | JKR |
| 902 | PBFL FL1 43 P10 | 23 | 4.924229 | 101.070429 | JKR |
| 903 | PBFL FL1 44 P10 | 19 | 4.924171 | 101.070239 | JKR |
| 904 | PBFL FL1 45 P10 | 20 | 4.924107 | 101.070085 | JKR |
| 905 | PBFL FL1 46 P10 | 23 | 4.924055 | 101.069922 | JKR |
| 906 | FL1 CD 2 P9 | 32 | 4.924239 | 101.06985 | MAJLIS |
| 907 | FL1 CD 3 P9 | 31 | 4.924517 | 101.069881 | MAJLIS |
| 908 | FL1 CD 4 P9 | 26 | 4.924777 | 101.069937 | MAJLIS |
| 909 | FL1 CD 5 P9 | 35 | 4.92494 | 101.070093 | MAJLIS |
| 910 | FL1 CD 6 P9 | 28 | 4.925065 | 101.070378 | MAJLIS |
| 911 | T88 | 25 | 4.925167 | 101.070601 | MAJLIS |
| 912 | FL1 CD 8 P9 | 26 | 4.925384 | 101.070625 | MAJLIS |
| 913 | FL1 CD 9 P9 | 22 | 4.92561 | 101.070627 | MAJLIS |
| 914 | FL1 CD 10 P9 | 24 | 4.925797 | 101.070624 | MAJLIS |
| 915 | FL1 CD 11 P9 | 35 | 4.925999 | 101.0706 | MAJLIS |
| 916 | T89 | 16 | 4.926244 | 101.070413 | MAJLIS |
| 917 | FL1 D 13 P9 | 38 | 4.926376 | 101.070428 | MAJLIS |
| 918 | FL1 D 14 P9 | 24 | 4.926662 | 101.070602 | MAJLIS |
| 919 | FL1 D 15 P9 | 23 | 4.926847 | 101.070695 | MAJLIS |
| 920 | FL1 D 16 P9 | 48 | 4.927014 | 101.070793 | MAJLIS |

APPOINTMENT AS PANEL CONTRACTOR UNDER THE BUMIPUTERA CONTRACTORS PROGRAMME FOR WORKS UNDER SCHEDULE OF RATE (“SOR”) FOR SUPPLY, INSTALLATION AND COMMISSIONING OF FTTX NETWORK INFRASTRUCTURE FOR ALLO TECHNOLOGY SDN BHD

| No. | Pole & Manhole ID | Distance | Latitude | Longitude | Local Authority |
|-----|------------------------------------|----------|----------|------------|-----------------|
| 921 | FL1 D 18 P9 | 19 | 4.927371 | 101.071024 | MAJLIS |
| 922 | T90 | | 4.927309 | 101.071178 | MAJLIS |
| | PBFL FL1 46 P10 | 24 | 4.924055 | 101.069922 | JKR |
| 923 | FL1 FL2 2 P10 | 22 | 4.923954 | 101.069736 | JKR |
| 924 | FL1 FL2 3 P10 | 24 | 4.923851 | 101.069575 | JKR |
| 925 | FL1 FL2 4 P10 | 26 | 4.923718 | 101.069417 | JKR |
| 926 | FL1 FL2 5 P10 | 23 | 4.923539 | 101.069276 | JKR |
| 927 | FL1 FL2 6 P10 | 27 | 4.923365 | 101.069174 | JKR |
| 928 | FL1 FL2 7 P10 | 31 | 4.923159 | 101.069057 | JKR |
| 929 | T91 | 20 | 4.922944 | 101.06889 | JKR |
| 930 | FL1 B 9/1 P9 OLT SMK RLKT LASAH | | 4.923028 | 101.068737 | JKR |
| | T91 | 15 | 4.922944 | 101.06889 | JKR |
| 931 | FL1 AB 8 P9 | 28 | 4.922842 | 101.068822 | JKR |
| 932 | FL1 A 9 P9 | 22 | 4.922654 | 101.068661 | JKR |
| 933 | FL1 FL2 10 P10 | 29 | 4.92252 | 101.068525 | JKR |
| 934 | FL1 A 10 P9 | 50 | 4.922389 | 101.068314 | JKR |
| 935 | FL1 A 11 P9 | 48 | 4.922185 | 101.067921 | JKR |
| 936 | FL1 A 12 P9 | 30 | 4.922073 | 101.067508 | JKR |
| 937 | FL1 FL2 15 P10 | 31 | 4.922032 | 101.067251 | JKR |
| 938 | FL1 FL2 16 P10 | 35 | 4.922024 | 101.066982 | JKR |
| 939 | FL2 A 8 P9 | 25 | 4.922021 | 101.066671 | JKR |
| 940 | FL2 A 7 P9 | 23 | 4.921999 | 101.066458 | JKR |
| 941 | FL2 A 6 P9 | 36 | 4.922004 | 101.06626 | JKR |
| 942 | FL2 A 5 P9 | 34 | 4.92197 | 101.065946 | JKR |
| 943 | FL2 A 4 P9 | 38 | 4.921944 | 101.065653 | JKR |
| 944 | FL1 FL2 22 P10 | 18 | 4.921896 | 101.065322 | JKR |
| 945 | FL2 AB 2 P9 | 37 | 4.9219 | 101.065171 | JKR |
| 946 | T92 | 36 | 4.921857 | 101.064852 | JKR |
| 947 | T93 | 28 | 4.921831 | 101.064537 | JKR |
| 948 | FL2 TBA 2 P10 | 36 | 4.921787 | 101.064301 | JKR |
| 949 | FL2 TBA 3 P10 | 25 | 4.921795 | 101.063984 | JKR |
| 950 | FL2 C 3 P9 | 30 | 4.921842 | 101.063769 | JKR |
| 951 | T94 | 30 | 4.921902 | 101.063511 | JKR |
| 952 | FL2 TBA 6 P10 | 27 | 4.921976 | 101.06326 | JKR |
| 953 | FL2 TBA 7 P10 | 33 | 4.922074 | 101.063042 | JKR |
| 954 | FL2 TBA 8 P10 | 30 | 4.922225 | 101.062798 | JKR |
| 955 | FL2 TBA 9 P10 | 35 | 4.922353 | 101.062573 | JKR |
| 956 | FL2 TBA 10 P10 | 33 | 4.922521 | 101.062312 | JKR |
| 957 | FL2 TBA 11 P10 | 26 | 4.922674 | 101.062066 | JKR |
| 958 | FL2 C 8 P9 | 45 | 4.922801 | 101.06188 | JKR |
| 959 | FL2 C 9 P9 | 48 | 4.923 | 101.061534 | JKR |
| 960 | FL2 TBA 15 P10 | 31 | 4.923199 | 101.061163 | JKR |
| 961 | FL2 TBA 16 P10 | 32 | 4.923344 | 101.060938 | JKR |
| 962 | FL2 TBA 17 P10 | 29 | 4.923484 | 101.060698 | JKR |
| 963 | FL2 TBA 18 P10 | 35 | 4.9236 | 101.060469 | JKR |
| 964 | FL2 TBA 19 P10 | 36 | 4.923711 | 101.060181 | JKR |
| 965 | T95 | 49 | 4.923761 | 101.059869 | JKR |
| 966 | FL2 C 15 P9 | 41 | 4.92381 | 101.059436 | JKR |
| 967 | FL2 C 16 P9 | 41 | 4.923843 | 101.059072 | JKR |
| 968 | FL2 C 17 P9 | 42 | 4.92384 | 101.05871 | JKR |
| 969 | FL2 C 18 P9 | 40 | 4.923852 | 101.058338 | JKR |
| 970 | FL2 C 19 P9 | 43 | 4.923846 | 101.057983 | JKR |
| 971 | FL2 C 20 P9 | 44 | 4.923844 | 101.057601 | JKR |

APPOINTMENT AS PANEL CONTRACTOR UNDER THE BUMIPUTERA CONTRACTORS PROGRAMME FOR WORKS UNDER SCHEDULE OF RATE (“SOR”) FOR SUPPLY, INSTALLATION AND COMMISSIONING OF FTTX NETWORK INFRASTRUCTURE FOR ALLO TECHNOLOGY SDN BHD

| No. | Pole & Manhole ID | Distance | Latitude | Longitude | Local Authority |
|------|-------------------------------|----------|-------------|-------------|-----------------|
| 972 | FL2 C 21 P9 | 27 | 4.923816 | 101.057217 | JKR |
| 973 | FL2 C 22 P10 | 43 | 4.9238 | 101.056987 | JKR |
| 974 | T96 | 37 | 4.923707 | 101.056622 | JKR |
| 975 | FL2 C 24 P9 | 25 | 4.923555 | 101.056331 | JKR |
| 976 | FL2 C 25 P9 | 39 | 4.923469 | 101.05613 | JKR |
| 977 | T97 | 29 | 4.923324 | 101.055817 | JKR |
| 978 | KM B 29 P9 | 40 | 4.923222 | 101.055584 | JKR |
| 979 | KM B 28 P9 | 51 | 4.923064 | 101.055268 | JKR |
| 980 | KM B 26 P9 | 25 | 4.922786 | 101.054911 | JKR |
| 981 | KM B 27 P9 | 60 | 4.922917571 | 101.0550774 | JKR |
| 982 | KM B 25 P9 | 34 | 4.922596 | 101.054656 | JKR |
| 983 | KM B 24 P9 | 33 | 4.92238 | 101.054451 | JKR |
| 984 | KM B 23 P9 | 35 | 4.922172 | 101.054256 | JKR |
| 985 | KM B 22 P9 | 31 | 4.921949 | 101.054051 | JKR |
| 986 | KM B 21 P9 | 30 | 4.92174 | 101.053882 | JKR |
| 987 | KM B 20 P9 | 30 | 4.921517 | 101.053746 | JKR |
| 988 | KM B 19 P9 | 31 | 4.921297 | 101.053607 | JKR |
| 989 | KM B 18 P9 | 36 | 4.921057 | 101.053476 | JKR |
| 990 | KM B 17 P9 | 41 | 4.92079 | 101.053317 | JKR |
| 991 | KM B 16 P9 | 57 | 4.920465 | 101.053152 | JKR |
| 992 | KM B 15 P9 | 40 | 4.920037 | 101.052888 | JKR |
| 993 | KM B 14 P9 | 43 | 4.919732 | 101.052713 | JKR |
| 994 | T98 | 35 | 4.919438 | 101.052479 | JKR |
| 995 | KM B 12 P9 | 26 | 4.919166 | 101.052348 | JKR |
| 996 | KM B 11 P9 | 27 | 4.918969 | 101.052244 | JKR |
| 997 | T99 | 29 | 4.918761 | 101.052138 | JKR |
| 998 | KM B 10/1 P9 OLT SK KG MAAMOR | | 4.918719 | 101.052384 | JKR |
| | T99 | 39 | 4.918761 | 101.052138 | JKR |
| 999 | KM B 9 P9 | 56 | 4.918461 | 101.051979 | JKR |
| 1000 | KM B 8 P9 | 55 | 4.918077 | 101.051663 | JKR |
| 1001 | KM B 7 P9 | 45 | 4.917717 | 101.051331 | JKR |
| 1002 | KM B 6 P9 | 40 | 4.917436 | 101.051049 | JKR |
| 1003 | KM B 5 P9 | 51 | 4.91718 | 101.050804 | JKR |
| 1004 | KM B 4 P9 | 41 | 4.916841 | 101.050505 | JKR |
| 1005 | KM B 3 P9 | 22 | 4.916561 | 101.05028 | JKR |
| 1006 | KM B 2 P9 | 36 | 4.916422 | 101.050146 | JKR |
| 1007 | KM A 3 P9 | 36 | 4.916169 | 101.049963 | JKR |
| 1008 | KM A 4 P9 | 30 | 4.915915 | 101.049772 | JKR |
| 1009 | KM A 5 P9 | 31 | 4.915684 | 101.049653 | JKR |
| 1010 | KM A 6 P9 | 30 | 4.915449 | 101.049525 | JKR |
| 1011 | KM A 7 P9 | 31 | 4.91521 | 101.049411 | JKR |
| 1012 | KM A 8 P9 | 33 | 4.914954 | 101.049315 | JKR |
| 1013 | KM A 9 P9 | 26 | 4.914685 | 101.049223 | JKR |
| 1014 | KM A 10 P9 | 34 | 4.914489 | 101.049117 | JKR |
| 1015 | KM A11 P9 | 31 | 4.91422 | 101.048998 | JKR |
| 1016 | KM A 12 P9 | 30 | 4.913976 | 101.048888 | JKR |
| 1017 | KM A 13 P9 | 47 | 4.913738 | 101.048778 | JKR |
| 1018 | KM A 14 P9 | 48 | 4.913369 | 101.048597 | JKR |
| 1019 | KM A 15 P9 | 50 | 4.912993 | 101.048401 | JKR |
| 1020 | KM A 16 P9 | 47 | 4.912608 | 101.048182 | JKR |
| 1021 | KM A 17 P9 | 45 | 4.912272 | 101.047945 | JKR |
| 1022 | KM A 18 P9 | 49 | 4.911951 | 101.04772 | JKR |
| 1023 | KM A 19 P9 | 24 | 4.911581 | 101.047492 | JKR |
| 1024 | KM A 20 P9 | 30 | 4.911396 | 101.047394 | JKR |

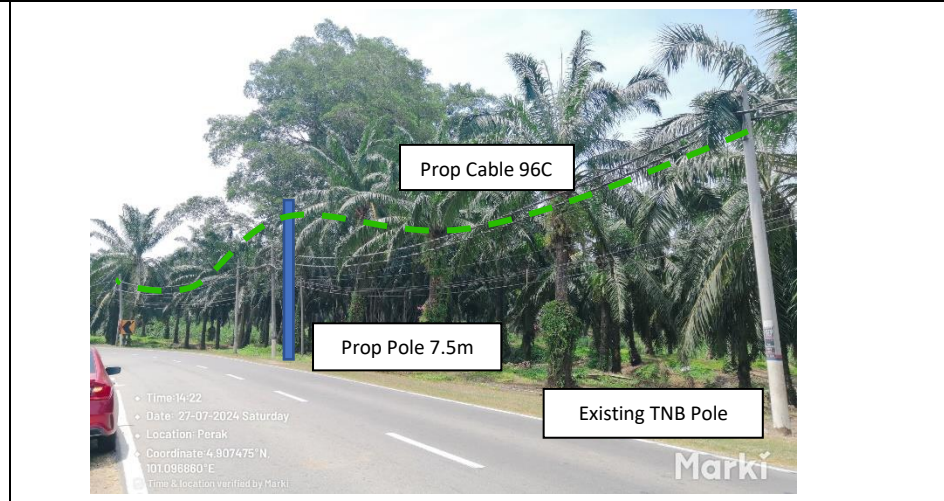
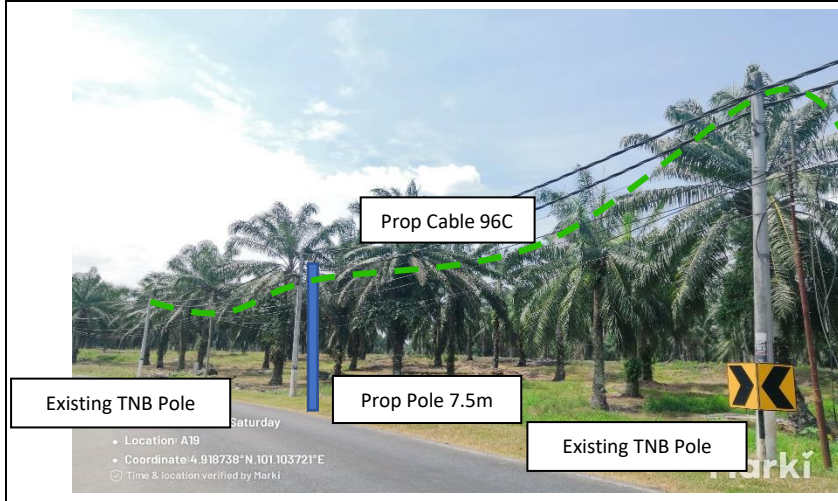
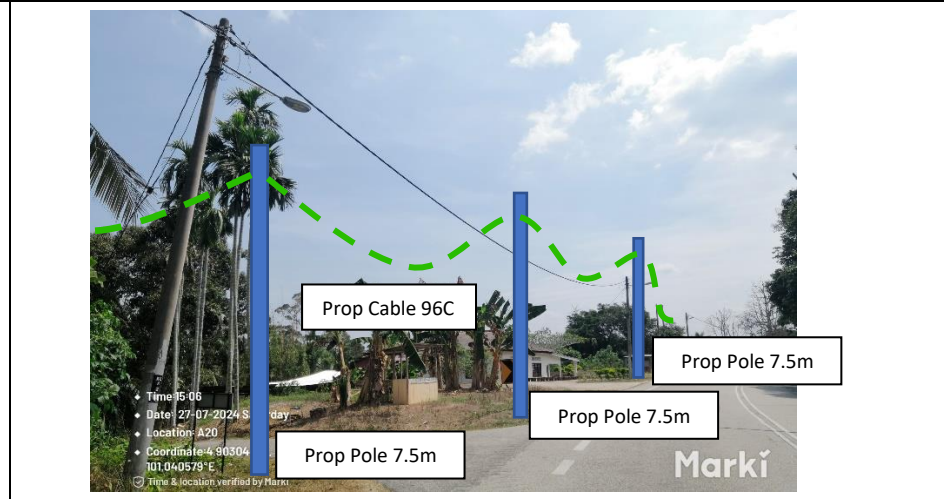
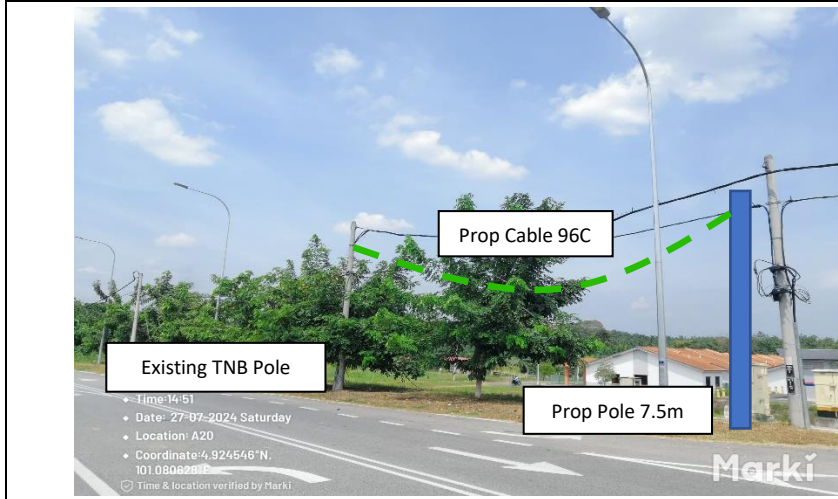
APPOINTMENT AS PANEL CONTRACTOR UNDER THE BUMIPUTERA CONTRACTORS PROGRAMME FOR WORKS UNDER SCHEDULE OF RATE (“SOR”) FOR SUPPLY, INSTALLATION AND COMMISSIONING OF FTTX NETWORK INFRASTRUCTURE FOR ALLO TECHNOLOGY SDN BHD

| No. | Pole & Manhole ID | Distance | Latitude | Longitude | Local Authority |
|------|---------------------------|----------|----------|------------|-----------------|
| 1025 | KM A 21 P9 | 30 | 4.911177 | 101.047252 | JKR |
| 1026 | KM A 22 P9 | 32 | 4.91094 | 101.047143 | JKR |
| 1027 | KM A 23 P9 | 30 | 4.910681 | 101.047044 | JKR |
| 1028 | T100 | 32 | 4.910428 | 101.04698 | JKR |
| 1029 | KM A 25 P9 | 29 | 4.91015 | 101.046938 | JKR |
| 1030 | KM A 26 P9 | 32 | 4.909894 | 101.046942 | JKR |
| 1031 | KM A 27 P9 | 30 | 4.909619 | 101.046926 | JKR |
| 1032 | KM A 28 P9 | 32 | 4.909359 | 101.046925 | JKR |
| 1033 | KM A 29 P9 | 33 | 4.909083 | 101.046928 | JKR |
| 1034 | KM A 30 P9 | 29 | 4.908796 | 101.046929 | JKR |
| 1035 | KM A 31 P9 | 37 | 4.908545 | 101.046947 | JKR |
| 1036 | KM A 32 P9 | 27 | 4.908218 | 101.046956 | JKR |
| 1037 | KM A 33 P9 | 32 | 4.907981 | 101.046936 | JKR |
| 1038 | KM A 34 P9 | 31 | 4.907702 | 101.046938 | JKR |
| 1039 | KM A 35 P9 | 32 | 4.907432 | 101.046922 | JKR |
| 1040 | KM A 36 P9 | 33 | 4.907163 | 101.046867 | JKR |
| 1041 | KM A 37 P9 | 31 | 4.906887 | 101.046772 | JKR |
| 1042 | KM A 38 P9 | 33 | 4.90665 | 101.046647 | JKR |
| 1043 | KM A 39 P9 | 34 | 4.906403 | 101.046494 | JKR |
| 1044 | KM A 40 P9 | 31 | 4.906192 | 101.046282 | JKR |
| 1045 | KM A 41 P9 | 33 | 4.906041 | 101.046058 | JKR |
| 1046 | KM A 42 P9 | 30 | 4.905898 | 101.045808 | JKR |
| 1047 | KM A 43 P9 | 31 | 4.905765 | 101.045587 | JKR |
| 1048 | KM A 44 P9 | 32 | 4.905626 | 101.045354 | JKR |
| 1049 | KM A 45 P9 | 28 | 4.905465 | 101.045121 | JKR |
| 1050 | KM A 46 P9 | 33 | 4.905346 | 101.044907 | JKR |
| 1051 | KM A 47 P9 | 31 | 4.905198 | 101.04466 | JKR |
| 1052 | KM A 48 P9 | 33 | 4.905039 | 101.044446 | JKR |
| 1053 | KL A 17 P9 | 33 | 4.904896 | 101.044197 | JKR |
| 1054 | KL A 16 P9 | 35 | 4.904768 | 101.043936 | JKR |
| 1055 | KL A 15 P9 | 31 | 4.904612 | 101.04367 | JKR |
| 1056 | KL A 14 P9 | 31 | 4.904461 | 101.043442 | JKR |
| 1057 | KL A 13 P9 | 32 | 4.904323 | 101.043211 | JKR |
| 1058 | KL A 12 P9 | 30 | 4.904171 | 101.042979 | JKR |
| 1059 | KL A 11 P9 | 31 | 4.904048 | 101.04275 | JKR |
| 1060 | KL A 10 P9 | 32 | 4.90391 | 101.042513 | JKR |
| 1061 | KL A 9 P9 | 31 | 4.903778 | 101.042267 | JKR |
| 1062 | KL A 8 P9 | 31 | 4.903642 | 101.042034 | JKR |
| 1063 | KL A 7 P9 | 30 | 4.903507 | 101.041797 | JKR |
| 1064 | KL A 6 P9 | 32 | 4.903375 | 101.041568 | JKR |
| 1065 | KL A 5 P9 | 33 | 4.903248 | 101.041323 | JKR |
| 1066 | KL A 4 P9 | 32 | 4.903149 | 101.041053 | JKR |
| 1067 | KL A 3 P9 | 31 | 4.90306 | 101.040788 | JKR |
| 1068 | KL A 2 P9 | 36 | 4.903002 | 101.040527 | JKR |
| 1069 | T101 | 33 | 4.903016 | 101.040214 | JKR |
| 1070 | T102 | 33 | 4.90306 | 101.039925 | JKR |
| 1071 | KL B 2 P9 | 31 | 4.903183 | 101.039668 | JKR |
| 1072 | T103 | 30 | 4.90331 | 101.039425 | JKR |
| 1073 | KL B 4 P9 | 32 | 4.903431 | 101.039195 | JKR |
| 1074 | KL B 5 P9 | 32 | 4.903554 | 101.03894 | JKR |
| 1075 | KL B 6 P9 | 33 | 4.903686 | 101.038696 | JKR |
| 1076 | KL B 7 P9 | 28 | 4.903822 | 101.038446 | JKR |
| 1077 | KL B 8 P9 | 32 | 4.903925 | 101.038223 | JKR |
| 1078 | KL B 9 P9 | 28 | 4.90407 | 101.037982 | JKR |
| 1079 | KL B 10 P9 | 35 | 4.90419 | 101.037766 | JKR |
| 1080 | KL B 11 P9 | 30 | 4.904336 | 101.0375 | JKR |
| 1081 | KL B 12 P9 OLT SMA MAAHAD | | 4.904465 | 101.037277 | JKR |

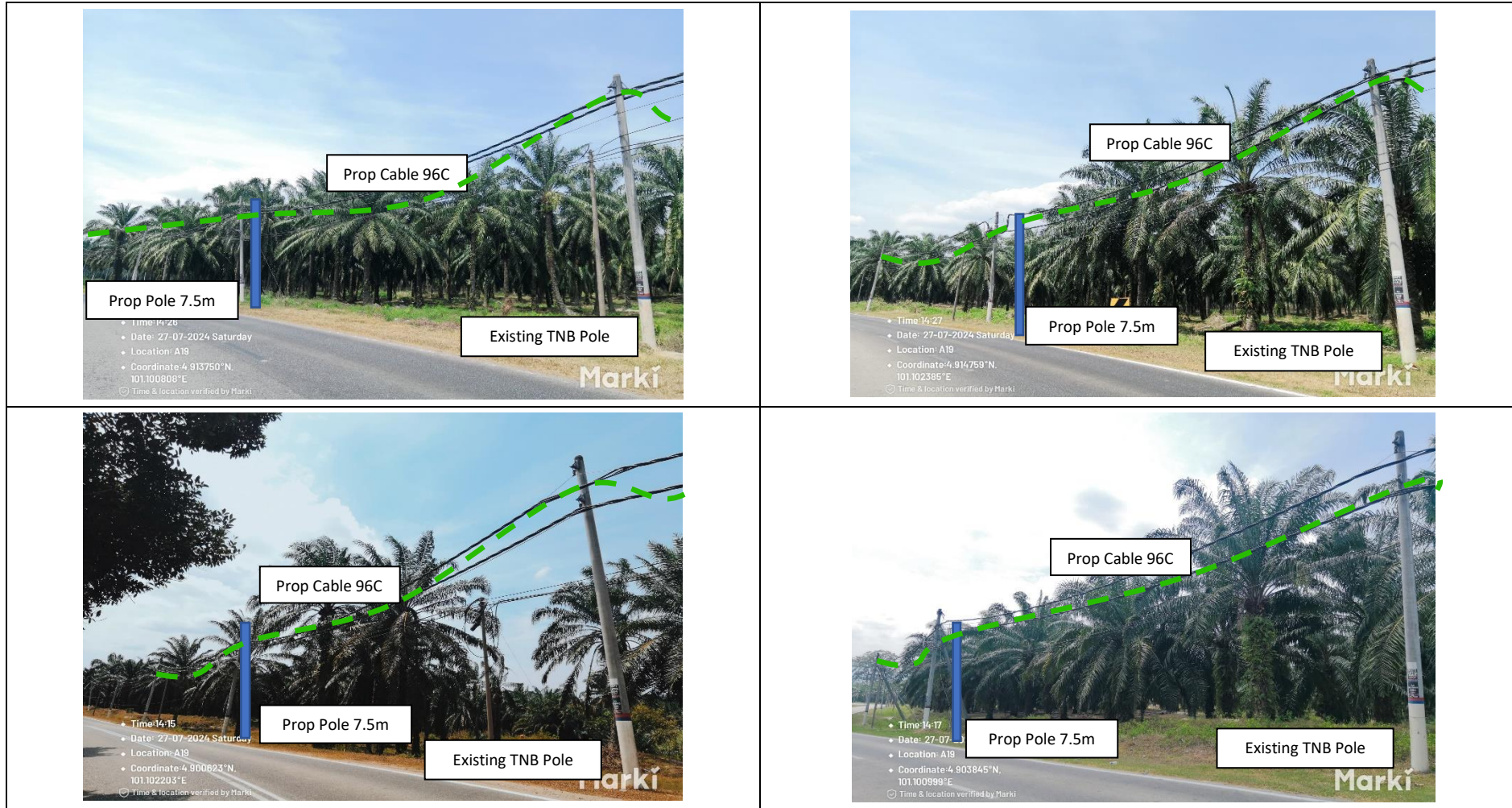
Site Photos – Propose Manhole & Open Trench (Pole 7.5m for install Riser)



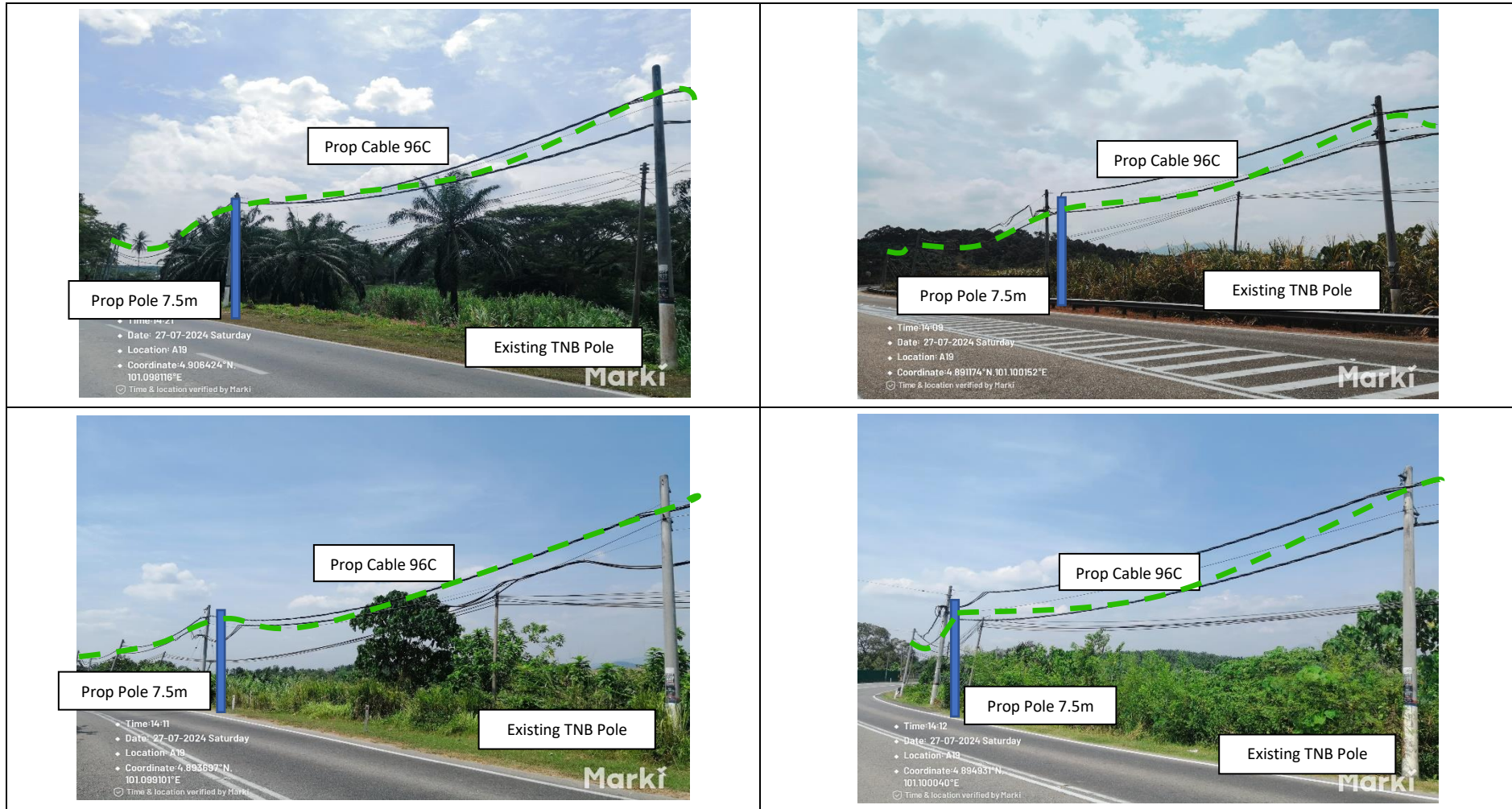
Site Photos – Propose New Pole 7.5m/9m



Site Photos – Propose New Pole 7.5m/9m



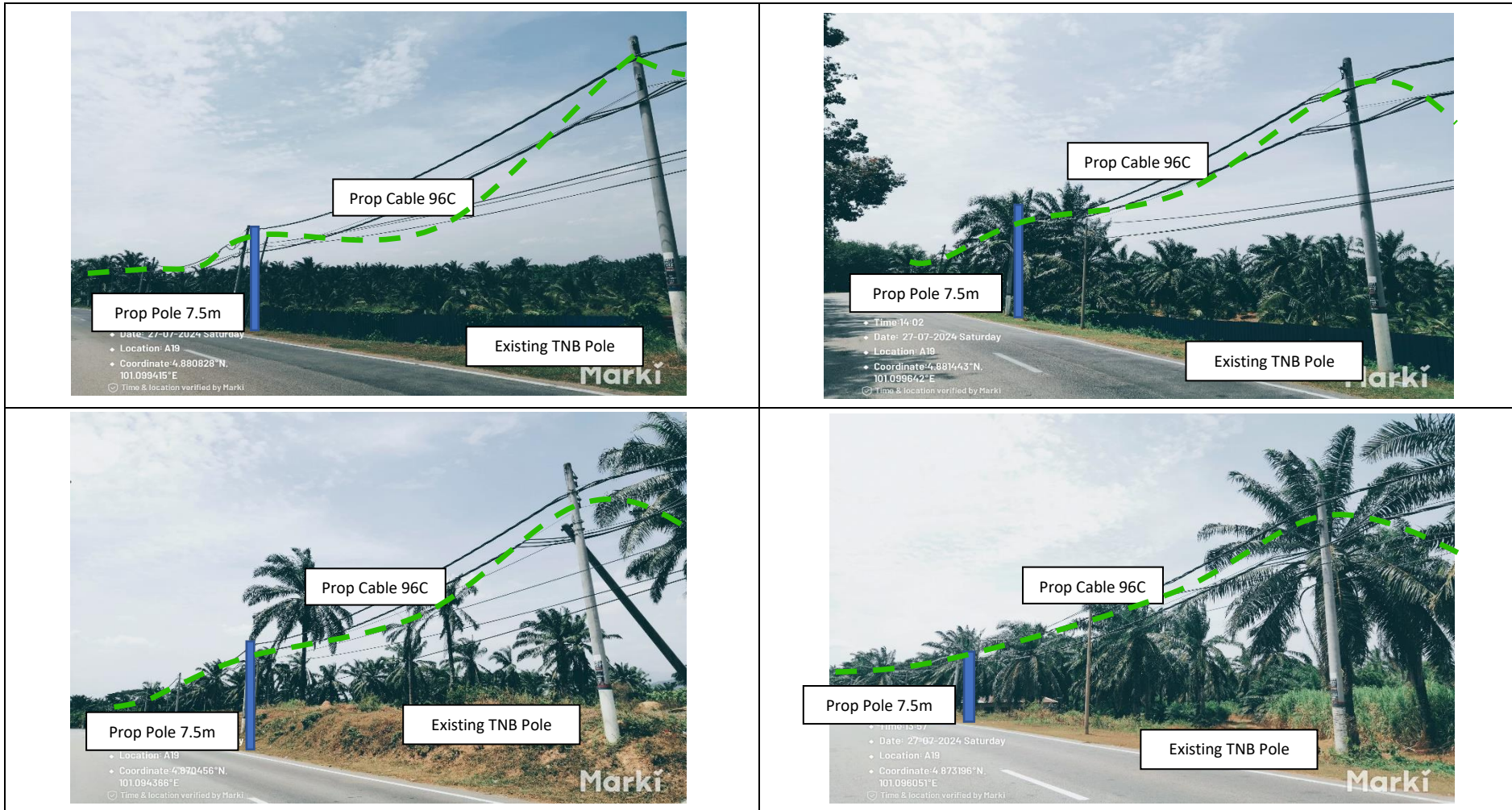
Site Photos – Propose New Pole 7.5m/9m



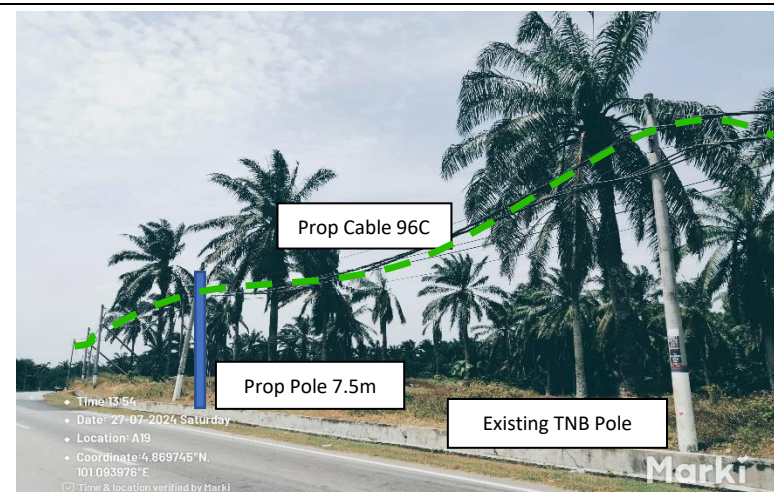
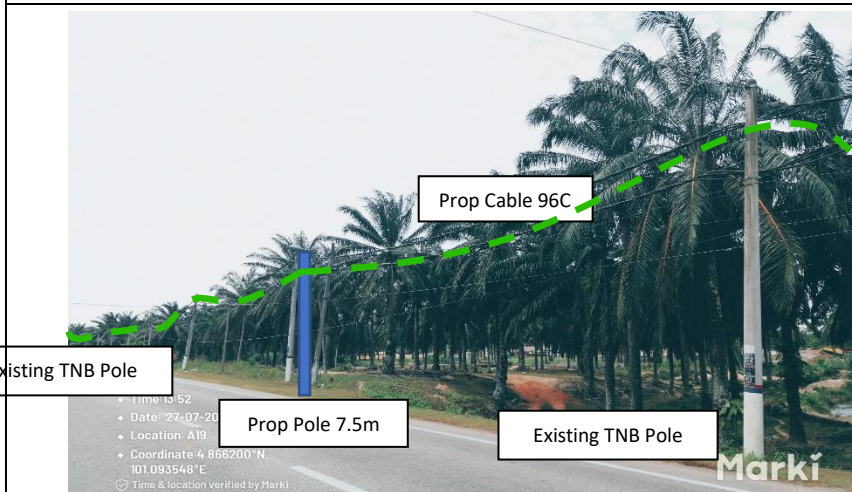
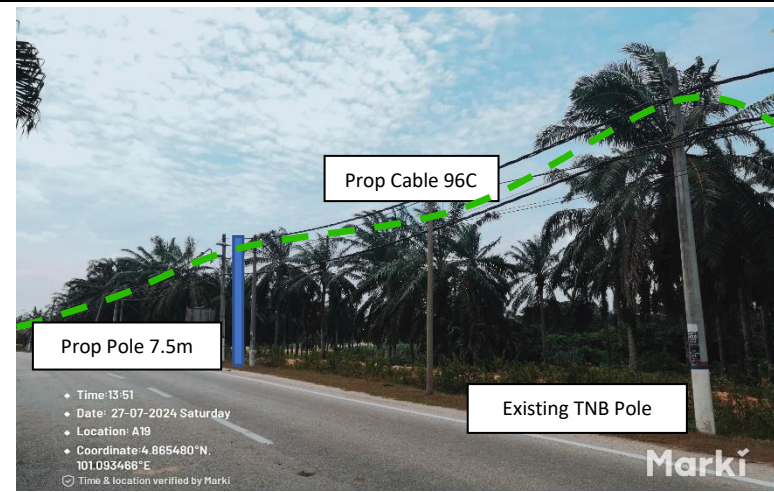
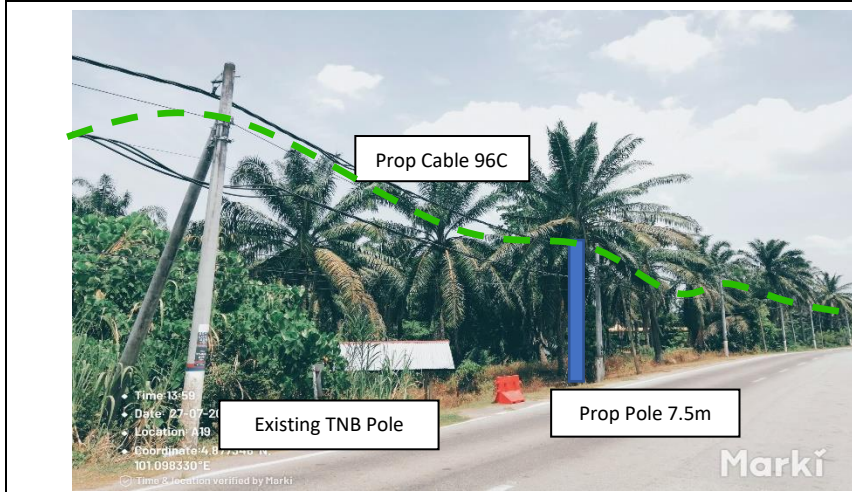
Site Photos – Propose New Pole 7.5m/9m



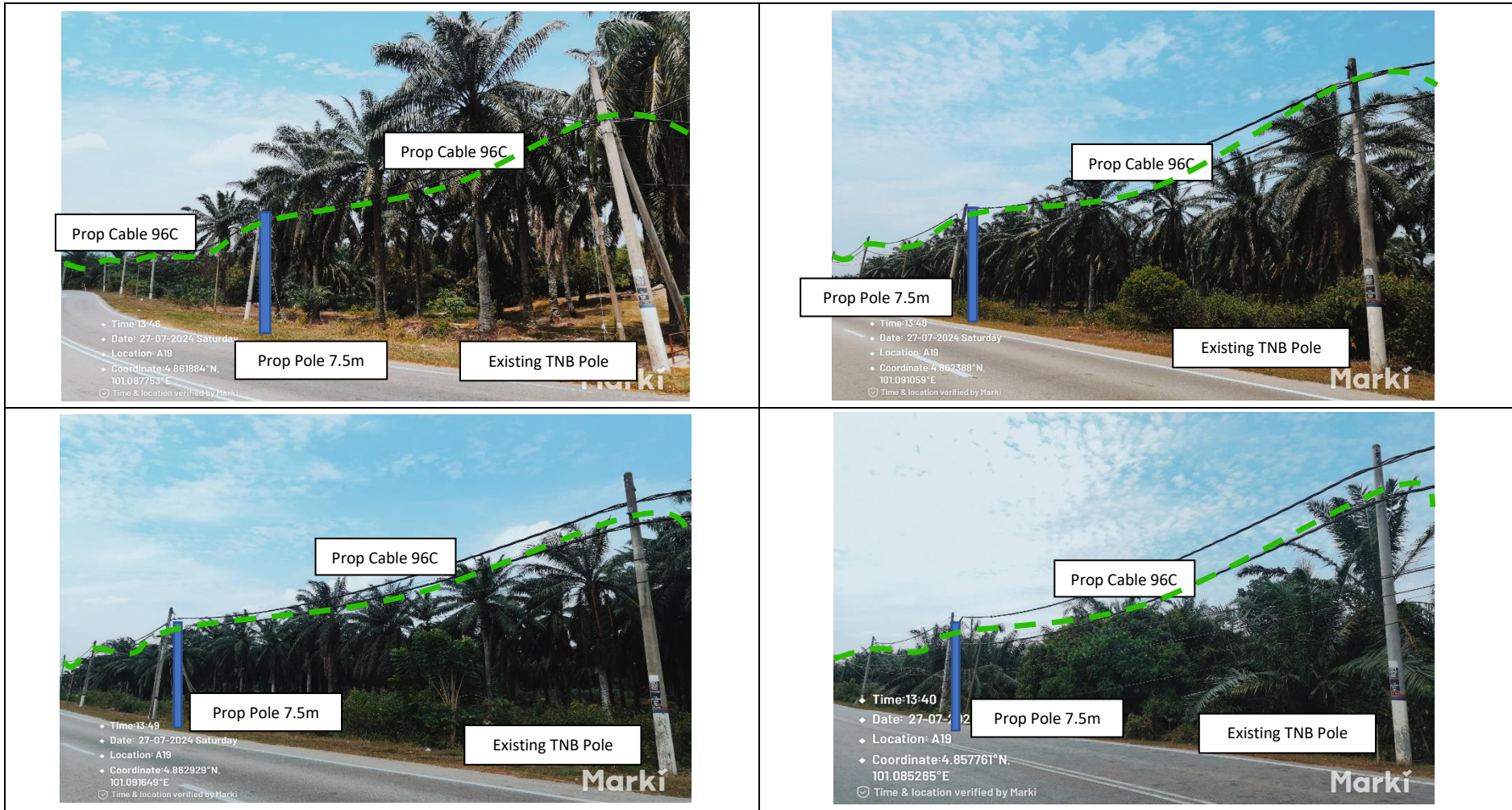
Site Photos – Propose New Pole 7.5m/9m



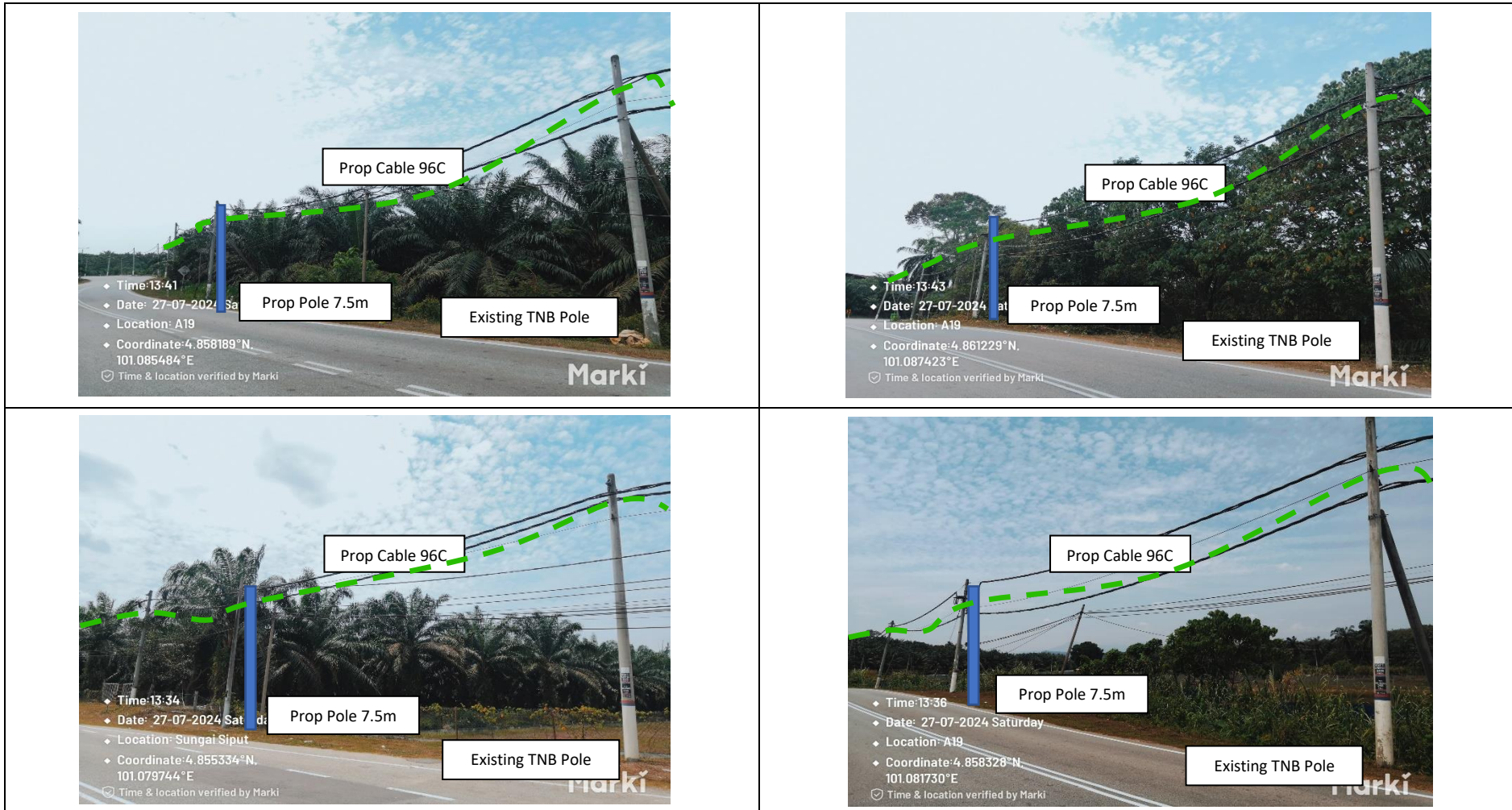
Site Photos – Propose New Pole 7.5m/9m



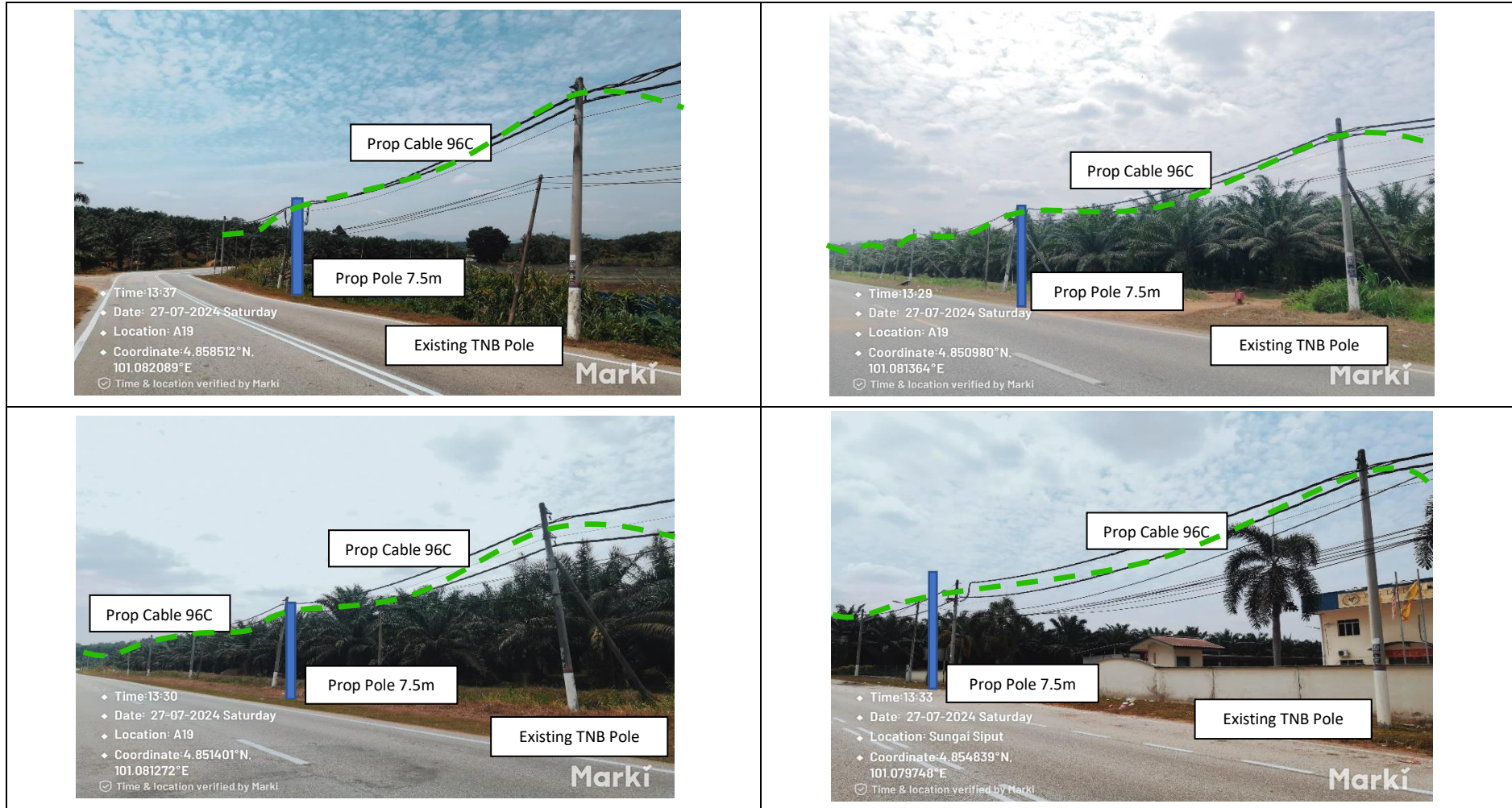
Site Photos – Propose New Pole 7.5m/9m



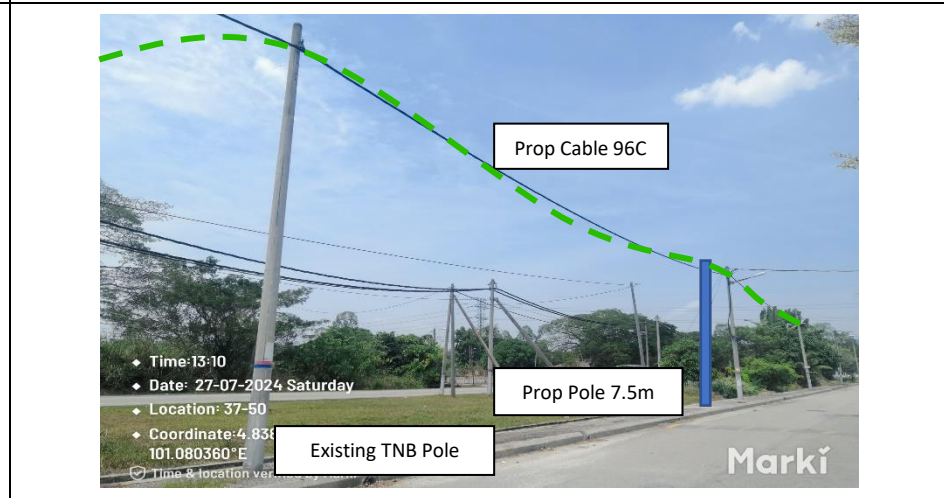
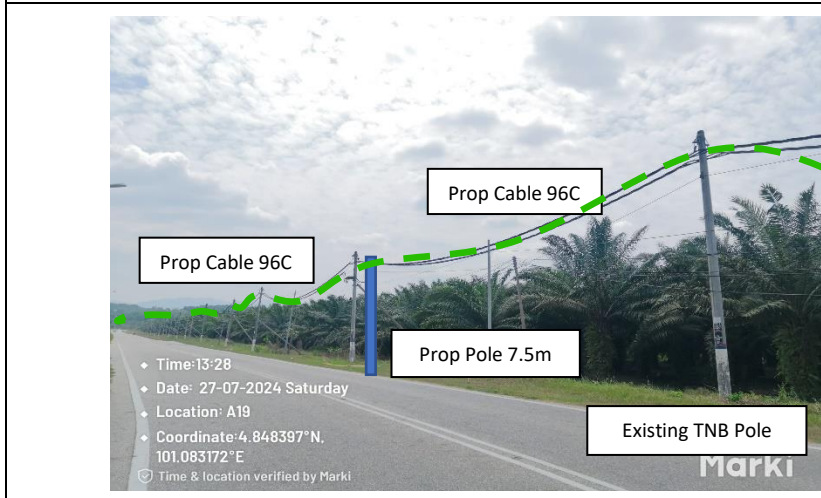
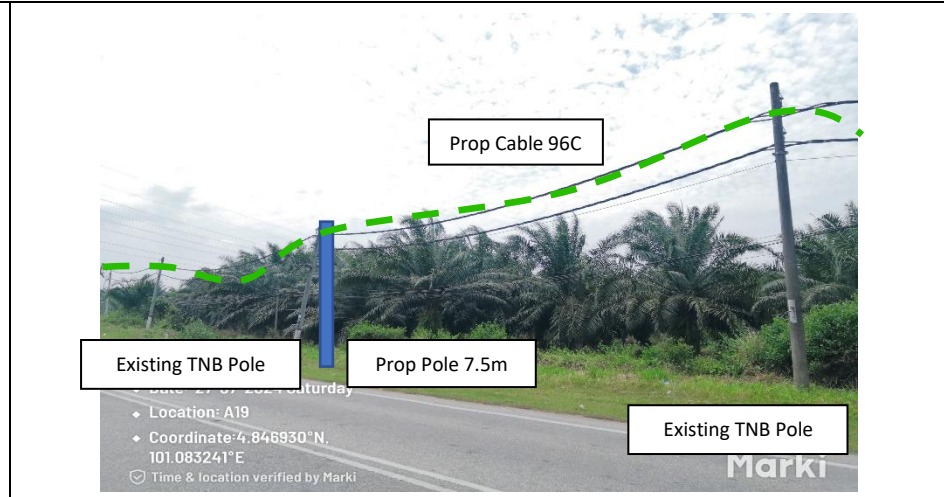
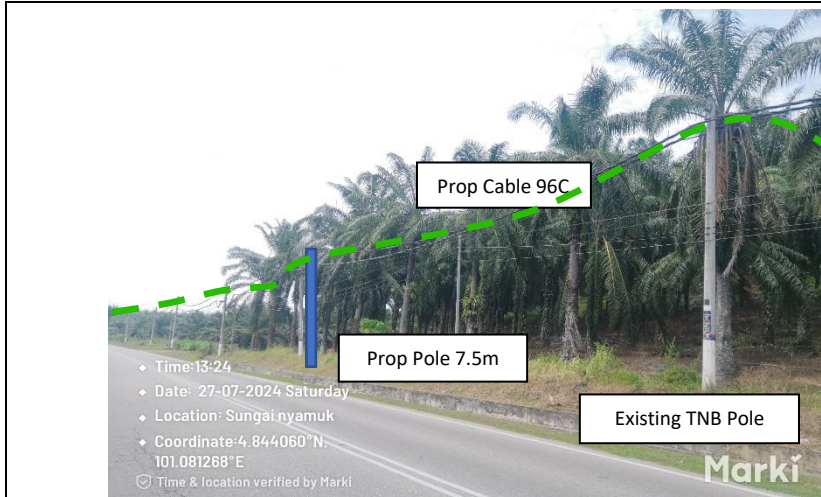
Site Photos – Propose New Pole 7.5m/9m



Site Photos – Propose New Pole 7.5m/9m



Site Photos – Propose New Pole 7.5m/9m



Site Photos – Propose New Pole 7.5m/9m

