

## TECHNICAL PROPOSAL

### POP2 ABD0106 SEKOLAH KEBANGSAAN JENIS (TAMIL) LADANG BANOPDAN (D-SIDE)

Company Name	:	STEADCOM SDN BHD
Company Address	:	11-3, Jalan Puteri 2/6, Bandar Puteri, 47100 Puchong, Selangor
Prepared By	:	Ashraff Azizi
Date	:	10/12/2024



POINT A

POINT B

**Starting Point**

Site / Boundary Name	:	SEKOLAH KEBANGSAAN JENIS (TAMIL) LADANG BANOPDAN
Address	:	Batu 4, Jalan Teluk Intan, 35500, Bidor, Perak
District	:	Bidor
Postcode	:	35500
State	:	Perak
GPS Coordinate	:	4.094454, 101.254860
LRD	:	A

**End Point**

Site / Boundary Name	:	SEKOLAH KEBANGSAAN JENIS (TAMIL) LADANG BANOPDAN
Address	:	Jalan Bidor Perkasa 5, Taman Bidor Perkasa 35500, Bidor, Perak
District	:	Bidor
Postcode	:	35500
State	:	Perak
GPS Coordinate	:	4.103100, 101.259680
LRD	:	B

### Work Summary

No	Proposed Distance and Method	Unit	Qty
1	Horizontal Directional Drilling (HDD)	m	<b>140</b>
2	Carriage Way Open trench (CW)	m	<b>0</b>
3	Grass Verge Open Trenching (GV)	m	<b>0</b>
4	Micro trenching (MT)	m	<b>0</b>
	Total		<b>140</b>

	Other Information	Unit	Qty
1	Proposed Manhole	EA	<b>4</b>
2	Proposed Pole	EA	<b>69</b>
3	Joint Closure	EA	<b>1</b>
4	Estimated time required for completion	days	<b>30</b>

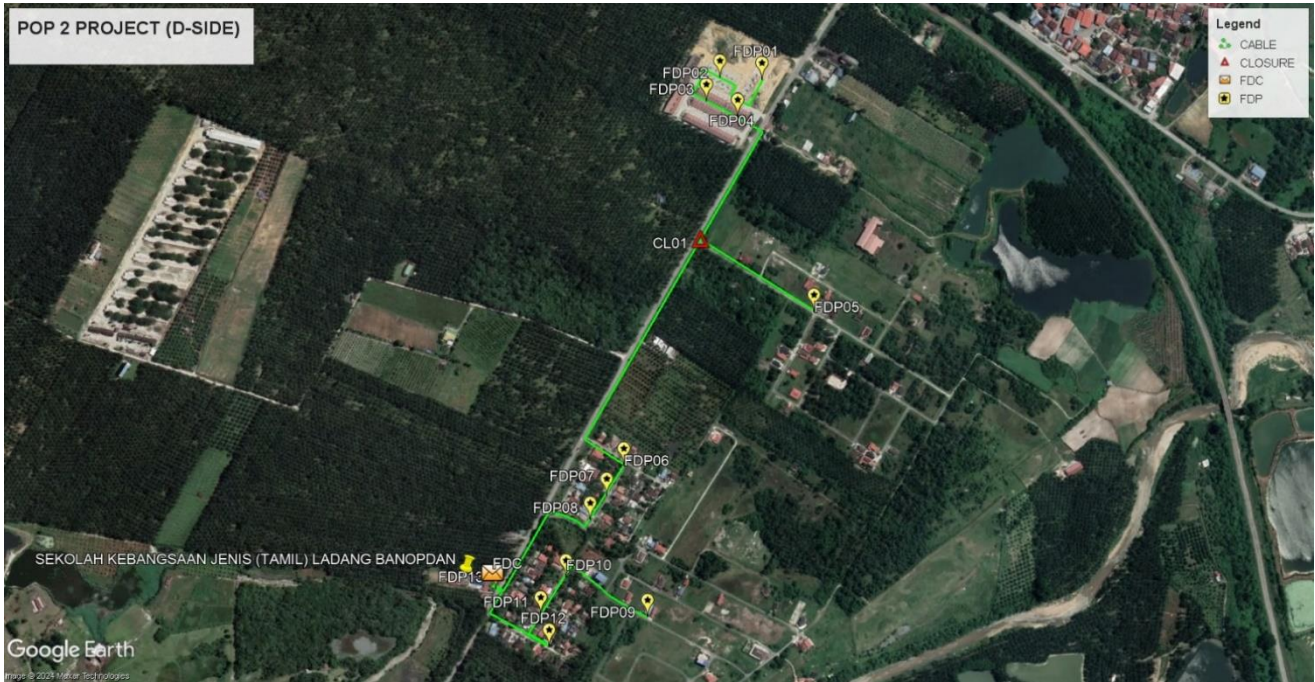
### Local Authority Summary

1. Daerah Tanjung Malim

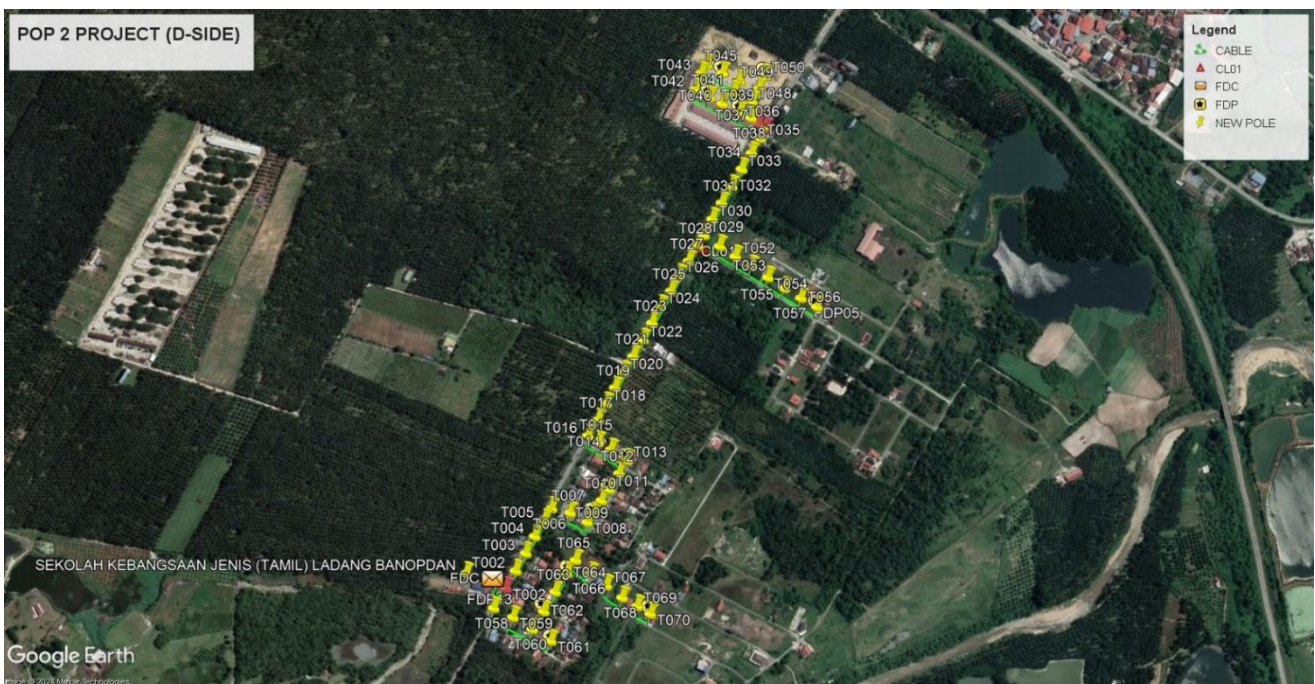
Bil	Items	Owner	Quantity	Distance(m)
1	HDD	JKR	4	140
		Majlis	-	-
		Estate / Private Land	-	-
2	New Pole	JKR	28	1235m
		Majlis	41	1457m
		Estate / Private Land	-	-
3	Existing TNB Pole	JKR	-	-
		Majlis	-	-
		Estate / Private Land	-	-
Total				2832m

**Site Plan – KMZ (Overview site area)**

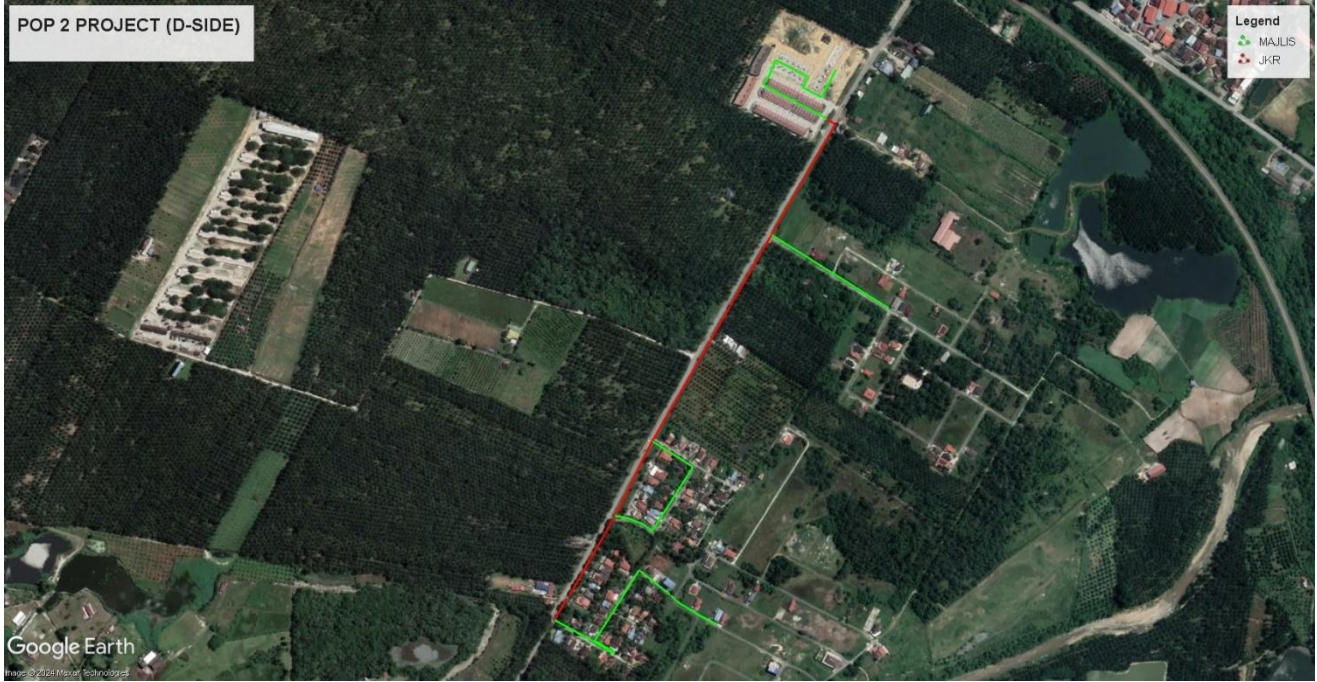
**Proposed FDP and Closure**



**Proposed New Pole**



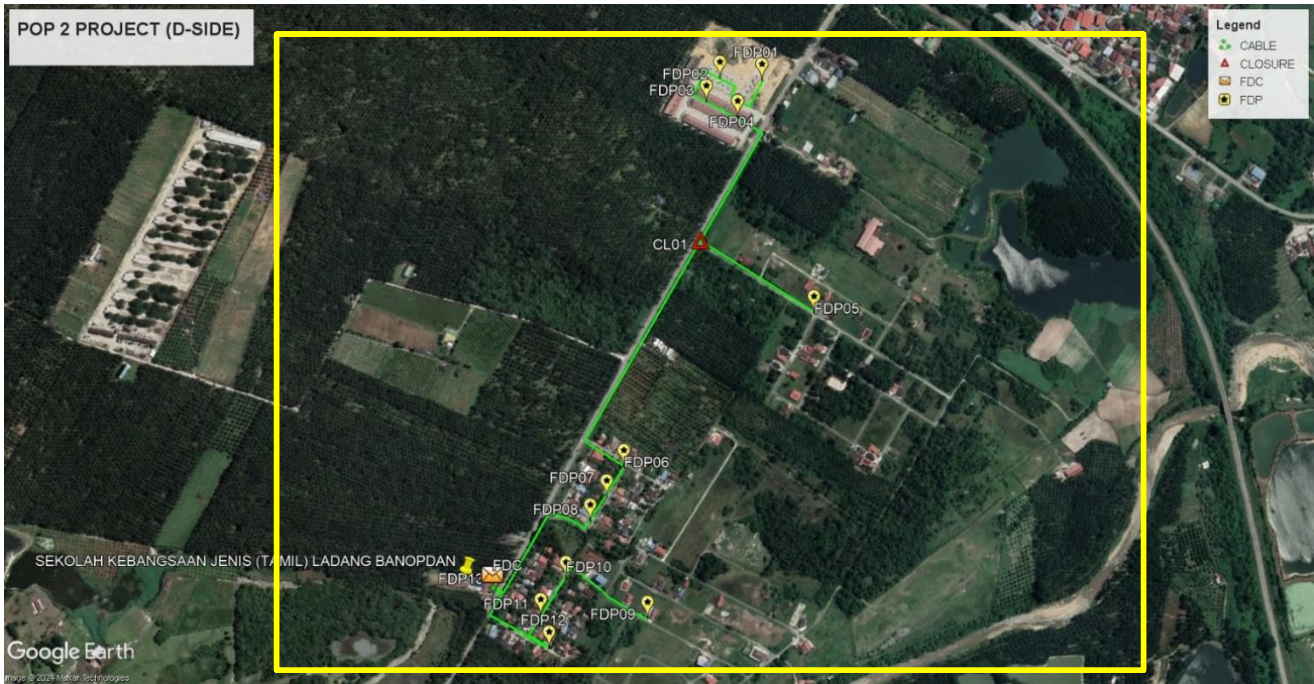
**Site Plan – KMZ Routing (All Local Authority)**



**Green Colour – Majlis Daerah Tapah**  
**Red Colour – JKR Batang Padang**

Site Plan – KMZ Routing (All site area)

Route 1



Route 1.1



**Route 1.2**



**Route 1.3**

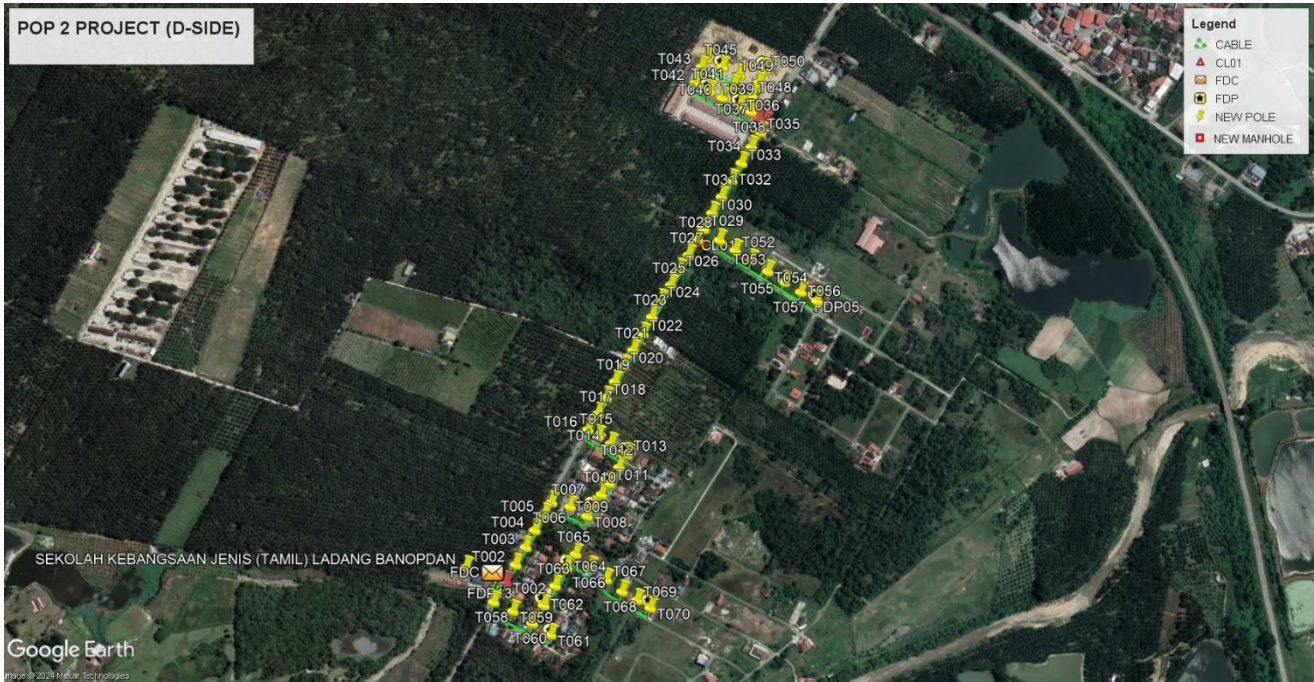


**Route 1.4**



**Route 1.5**

**Site Plan – KMZ Routing (Proposed new Pole)**



**Proposed New Pole Lat & Long Table**

No.	Label	Pole & Manhole ID	Latitude	Longitude	Local Authority
1	OLT/FDC	-	4.094304	101.255403	Majlis Daerah Tapah
2	FDP01	T050	4.103636	101.260394	Majlis Daerah Tapah
3	FDP02	T045	4.103688	101.259603	Majlis Daerah Tapah
4	FDP03	T041	4.103240	101.259365	Majlis Daerah Tapah
5	FDP04	T039	4.102960	101.259919	Majlis Daerah Tapah
6	FDP05	T057	4.099369	101.261351	Majlis Daerah Tapah
7	FDP06	T013	4.096542	101.257836	Majlis Daerah Tapah
8	FDP07	T011	4.096006	101.257508	Majlis Daerah Tapah
9	FDP08	T009	4.095553	101.257217	Majlis Daerah Tapah
10	FDP09	T070	4.093706	101.258269	Majlis Daerah Tapah
11	FDP10	T064	4.094453	101.256719	Majlis Daerah Tapah
12	FDP11	T062	4.093751	101.256296	Majlis Daerah Tapah
13	FDP12	T061	4.093208	101.256427	Majlis Daerah Tapah
14	FDP13	T001	4.094307	101.255418	Majlis Daerah Tapah
15	CL01	T029	4.100696	101.259258	Majlis Daerah Tapah

**Overall Pole (Proposed New)**

Pole & Manhole ID	Distance	Latitude	Longitude	Local Authority
T001	40	4.094307	101.255418	JKR Batang Padang
T002	40	4.094180	101.255600	JKR Batang Padang
T003	40	4.094501	101.255777	JKR Batang Padang
T004	40	4.094825	101.255964	JKR Batang Padang
T005	40	4.095137	101.256131	JKR Batang Padang
T006	40	4.095430	101.256311	JKR Batang Padang
T007	40	4.095650	101.256439	Majlis Daerah Tapah
T008	40	4.095573	101.256784	Majlis Daerah Tapah
T009	40	4.095399	101.257102	Majlis Daerah Tapah
T010	40	4.095553	101.257217	Majlis Daerah Tapah
T011	40	4.095798	101.257365	Majlis Daerah Tapah
T012	40	4.096006	101.257508	Majlis Daerah Tapah
T013	40	4.096299	101.257692	Majlis Daerah Tapah
T014	40	4.096542	101.257836	Majlis Daerah Tapah
T015	40	4.096734	101.257536	Majlis Daerah Tapah
T016	40	4.096875	101.257299	JKR Batang Padang
T017	40	4.096991	101.257113	JKR Batang Padang
T018	40	4.097286	101.257302	JKR Batang Padang
T019	40	4.097585	101.257448	JKR Batang Padang
T020	40	4.097878	101.257615	JKR Batang Padang
T021	40	4.098167	101.257773	JKR Batang Padang
T022	40	4.098459	101.257954	JKR Batang Padang
T023	40	4.098763	101.258131	JKR Batang Padang
T024	40	4.099072	101.258300	JKR Batang Padang
T025	40	4.099380	101.258458	JKR Batang Padang
T026	40	4.099660	101.258649	JKR Batang Padang
T027	40	4.099949	101.258801	JKR Batang Padang
T028	40	4.100216	101.258977	JKR Batang Padang
T029	40	4.100504	101.259141	JKR Batang Padang
T030	40	4.100696	101.259258	JKR Batang Padang
T031	40	4.100990	101.259414	JKR Batang Padang
T032	40	4.101286	101.259589	JKR Batang Padang
T033	40	4.101593	101.259772	JKR Batang Padang
T034	40	4.101913	101.259956	JKR Batang Padang
T035	40	4.102207	101.260141	JKR Batang Padang
T036	40	4.102483	101.260301	JKR Batang Padang
T037	40	4.102662	101.260390	JKR Batang Padang
T038	40	4.102753	101.260268	Majlis Daerah Tapah
T039	40	4.102857	101.260130	Majlis Daerah Tapah
T040	40	4.102960	101.259919	Majlis Daerah Tapah
T041	40	4.103118	101.259599	Majlis Daerah Tapah

T042	40	4.103240	101.259365	Majlis Daerah Tapah
T043	40	4.103386	101.259097	Majlis Daerah Tapah
T044	40	4.103686	101.259214	Majlis Daerah Tapah
T045	40	4.103838	101.259306	Majlis Daerah Tapah
T046	40	4.103688	101.259603	Majlis Daerah Tapah
T047	40	4.103529	101.259915	Majlis Daerah Tapah
T048	40	4.103337	101.259806	Majlis Daerah Tapah
T049	40	4.103158	101.260145	Majlis Daerah Tapah
T050	40	4.103392	101.260274	Majlis Daerah Tapah
T051	40	4.103636	101.260394	Majlis Daerah Tapah
T052	40	4.100491	101.259549	Majlis Daerah Tapah
T053	40	4.100302	101.259841	Majlis Daerah Tapah
T054	40	4.100117	101.260136	Majlis Daerah Tapah
T055	40	4.099913	101.260443	Majlis Daerah Tapah
T056	40	4.099715	101.260744	Majlis Daerah Tapah
T057	40	4.099533	101.261053	Majlis Daerah Tapah
T058	40	4.099369	101.261351	JKR Batang Padang
T059	40	4.093812	101.255369	Majlis Daerah Tapah
T060	40	4.093645	101.255728	Majlis Daerah Tapah
T061	40	4.093423	101.256085	Majlis Daerah Tapah
T062	40	4.093208	101.256427	Majlis Daerah Tapah
T063	40	4.093751	101.256296	Majlis Daerah Tapah
T064	40	4.094112	101.256507	Majlis Daerah Tapah
T065	40	4.094453	101.256719	Majlis Daerah Tapah
T066	40	4.094698	101.256886	Majlis Daerah Tapah
T067	40	4.094452	101.257168	Majlis Daerah Tapah
T068	40	4.094229	101.257452	Majlis Daerah Tapah
T069	40	4.094007	101.257747	Majlis Daerah Tapah
T070	40	4.093848	101.258022	Majlis Daerah Tapah
T071	40	4.093706	101.258269	Majlis Daerah Tapah

Site Photos - Proposed to install pole



PROJEK PENYEDIAAN DAN PENYELENGGARAAN POINT OF PRESENCE (POP) FASA 2: HAB INFRASTRUKTUR GENTIAN OPTIK BERHAMPIRAN DENGAN SEKOLAH, KAWASAN PERINDUSTRIAN, PREMIS KERAJAAN DAN KOMUNITI SEKITARNYA OLEH KEMENTERIAN KOMUNIKASI MALAYSIA - ZON UTARA (KKMM.400-11/17/132(1))



PROJEK PENYEDIAAN DAN PENYELENGGARAAN POINT OF PRESENCE (POP) FASA 2: HAB INFRASTRUKTUR GENTIAN OPTIK BERHAMPIRAN DENGAN SEKOLAH, KAWASAN PERINDUSTRIAN, PREMIS KERAJAAN DAN KOMUNITI SEKITARNYA OLEH KEMENTERIAN KOMUNIKASI MALAYSIA - ZON UTARA (KKMM.400-11/17/132(1))



PROJEK PENYEDIAAN DAN PENYELENGGARAAN POINT OF PRESENCE (POP) FASA 2: HAB INFRASTRUKTUR GENTIAN OPTIK BERHAMPIRAN DENGAN SEKOLAH, KAWASAN PERINDUSTRIAN, PREMIS KERAJAAN DAN KOMUNITI SEKITARNYA OLEH KEMENTERIAN KOMUNIKASI MALAYSIA - ZON UTARA (KKMM.400-11/17/132(1))

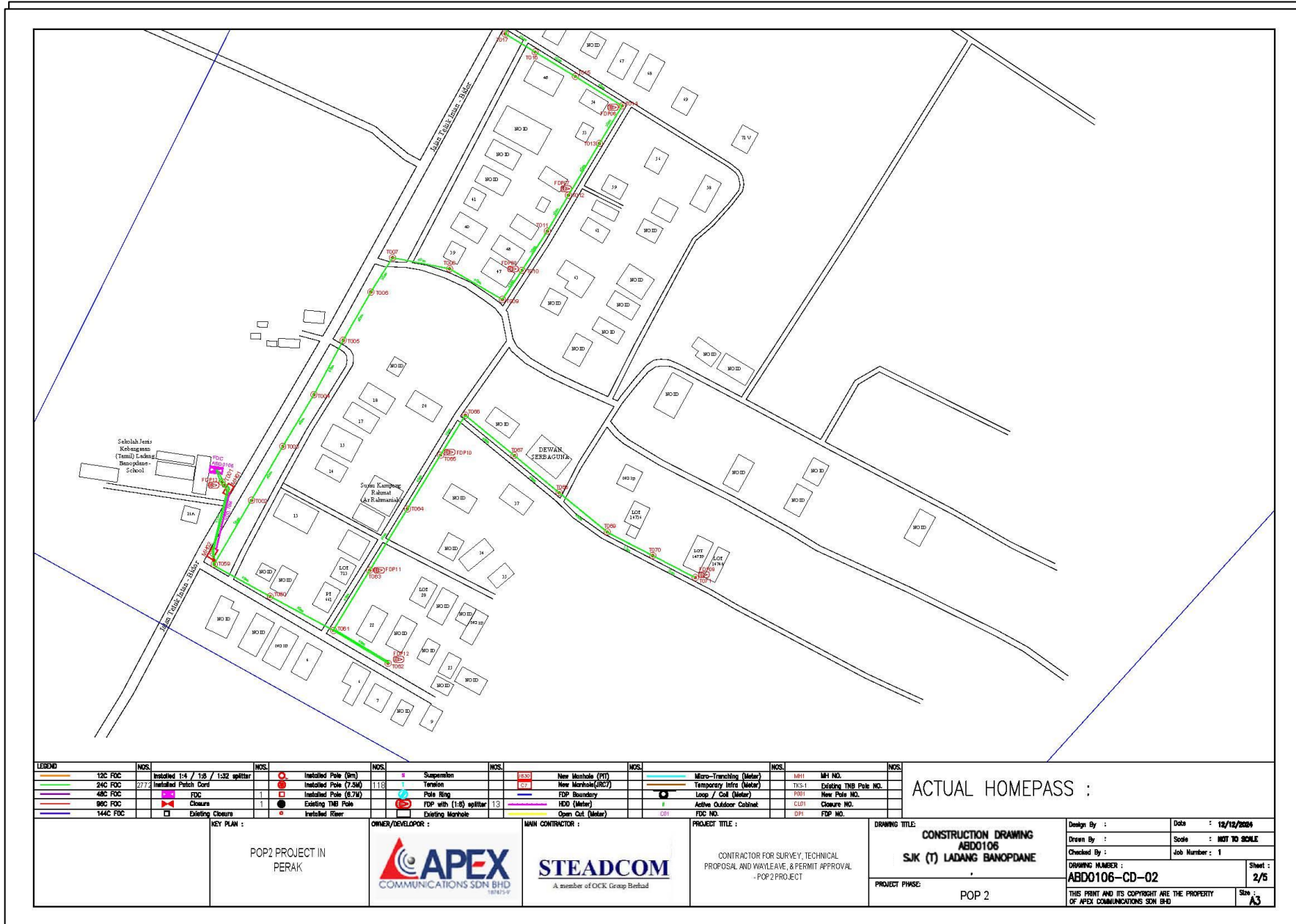


**Site Photos - Crossing (HDD)**



3rd Parties Dependencies

No.	Local Council/ Authority	Remark
1	JKR Batang Padang	
2	Majlis Daerah Tapah	
3		
4		
5		
6		



LEGEN	NOS.	NOS.	NOS.	NOS.	NOS.	NOS.	NOS.	NOS.	NOS.	NOS.
12C FOC	Installed 1/4 / 1/8 / 1/32 splitter	Installed Pole (6m)	Suspension	New Manhole (PT)	Micro-Trenching (Meter)	MHT	MHT NO.			
24C FOC	Installed Patch Cord	Installed Pole (7.5M)	Tension	New Manhole (RC7)	Temporary Infra (Meter)	TKS-1	Existing TNB Pole NO.			
48C FOC	FOC	Installed Pole (8.7M)	Pole Ring	FDP Boundary	Loop / Coil (Meter)	FOH	New Pole NO.			
96C FOC	Closure	Existing TNB Pole	FDP with 1:8 splitter	HDD (Meter)	Active Outdoor Cabinet	COU1	Closure NO.			
144C FOC	Existing Closure	Installed River	Existing Manhole	Open Cut (Meter)		OP1	FDP NO.			

ACTUAL HOMEPASS :

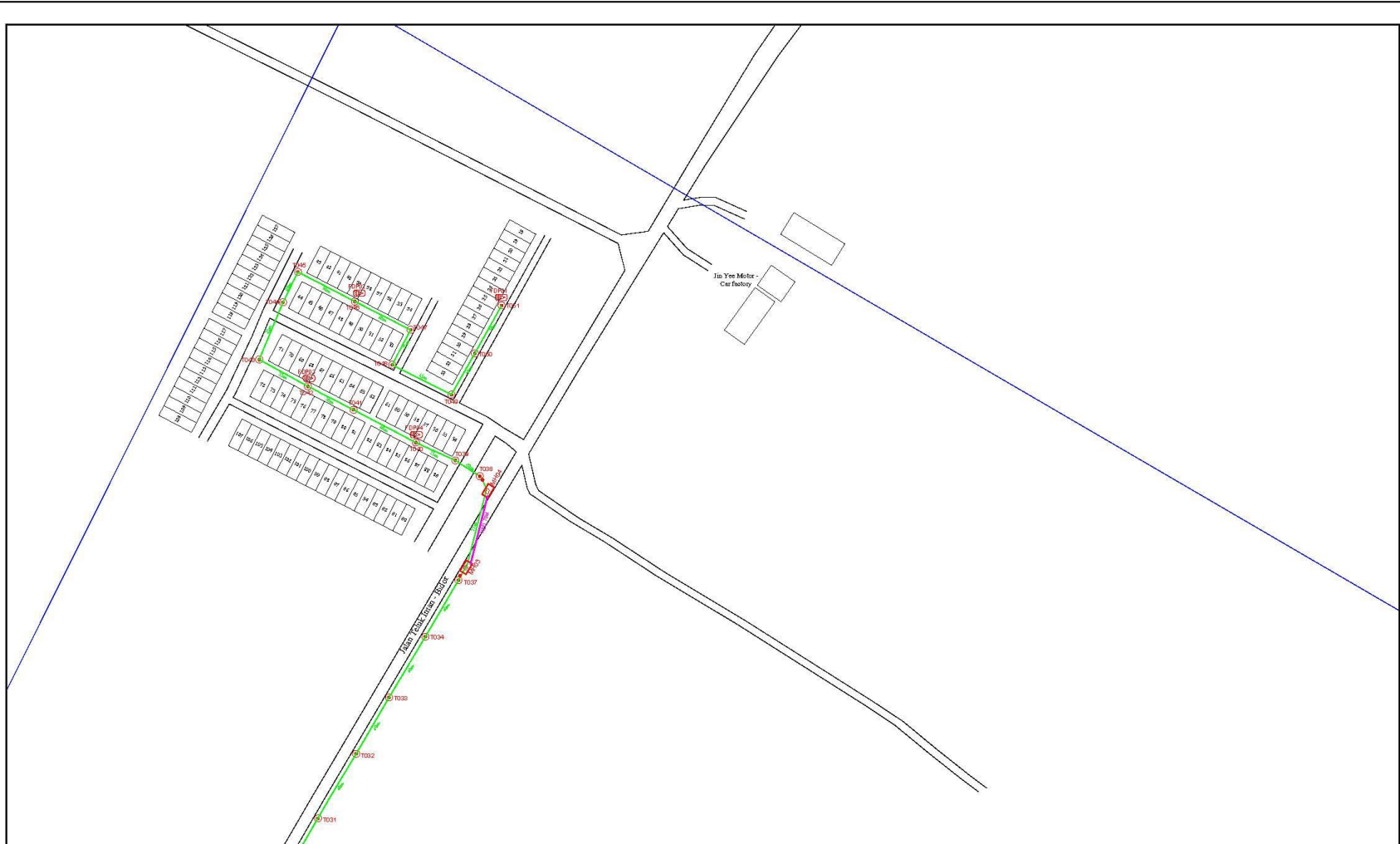
POP2 PROJECT IN PERAK 	OWNER/DEVELOPER : 	MAIN CONTRACTOR : CONTRACTOR FOR SURVEY, TECHNICAL PROPOSAL AND WAYLEAVE, & PERMIT APPROVAL - POP2 PROJECT	PROJECT TITLE : CONSTRUCTION DRAWING ABD0106 SJK (T) LADANG BANOPDANE	Design By : Drawn By : Checked By :	Date : 18/12/2024 Scale : NOT TO SCALE Job Number : 1
				DRAWING NUMBER : ABD0106-CD-02	Sheet : 2/5
PROJECT PHASE : POP 2				THIS PRINT AND ITS COPYRIGHT ARE THE PROPERTY OF APEX COMMUNICATIONS SDN BHD	



LEGEND	NOS.		NOS.		NOS.		NOS.		NOS.		NOS.		NOS.		NOS.
52C FOC		Installed 1:4 / 1:8 / 1:32 splitter		Installed Pole (6m)		Suspension		New Manhole (RT)		Micro-Tranching (Meter)		WFI NO.			
24C FOC	277	Installed Patch Cord		Installed Pole (7.5m)	118	Yarnish		New Manhole (RT)		Temporary Intra (Meter)		TKS-1	Cutting THB Pole NO.		
48C FOC		FOC	1	Installed Pole (6.7M)		Pole Ring		FDP Boundary		Loop / Cut (Meter)		POB1	New Pole NO.		
80C FOC		Closure	1	Existing THB Pole		FDP with 1:8 splitter	13	HDO (Meter)		Active Outdoor Cabinet		CLP1	Closure NO.		
144C FOC		Existing Closure		Installed Riser		Existing Manhole		Open Cut (Meter)		OTI		OP1	FDP NO.		

KEY PLAN :	OWNER/DEVELOPER :	MAIN CONTRACTOR :	PROJECT TITLE :	DRAWING TITLE :	Design By :	Date :
POP2 PROJECT IN PERAK	<b>APEX</b> COMMUNICATIONS SDN BHD 187475-V	<b>STEADCOM</b> A member of OCK Group Berhad	CONTRACTOR FOR SURVEY, TECHNICAL PROPOSAL AND WAYLEAVE, & PERMIT APPROVAL - POP2 PROJECT	CONSTRUCTION DRAWING ABD0106 S.I.K (T) LADANG BANOPDANE		12/12/2024
				ACTUAL HOMEPASS :	Drawn By :	Scale :
					Checked By :	NOT TO SCALE
					DRAWING NUMBER :	Job Number :
					ABD0106-CD-03	1
				PROJECT PHASE :	POP 2	Sheet :
						3/5
					THIS PRINT AND ITS COPYRIGHT ARE THE PROPERTY OF APEX COMMUNICATIONS SDN BHD	
						Size :
						A3



LEGEND	NOS.		NOS.		NOS.		NOS.		NOS.		NOS.		NOS.
12C FOC		Installed 1:4 / 1:8 / 1:32 splitter		Installed Pole (6m)		Suspension		New Manhole (RT)		Micro-Tranching (Meter)		MH1	MH NO.
24C FOC	277	Installed Patch Cord		Installed Pole (7.5M)	118	Version		New Manhole (R/C)		Temporary Infra (Meter)		TKS-1	Existing THB Pole NO.
48C FOC		FDC	1	Pole Ring		FDP with (1:8) splitter	13	FDP Boundary		Loop / Coil (Meter)		PRO1	New Pole NO.
96C FOC		Closure	1	Existing THB Pole		External Manhole		HDD (Meter)		Active Outdoor Cabinet		CU01	Closure NO.
144C FOC		Existing Closure		Installed Riser		Open Cut (Meter)		Open Cut (Meter)		FDC NO.		CU1	FDP NO.

KEY PLAN :	OWNER/DEVELOPER :	MAIN CONTRACTOR :	PROJECT TITLE :	DRAWING TITLE :
POP2 PROJECT IN PERAK	<b>APEX</b> COMMUNICATIONS SDN BHD	<b>STEADCOM</b> A member of OCK Group Berhad	CONTRACTOR FOR SURVEY, TECHNICAL PROPOSAL AND WAYLEAVE, & PERMIT APPROVAL - POP2 PROJECT	<b>CONSTRUCTION DRAWING ABD0106 SJK (T) LADANG BANOPDANE</b>
				Design By : Drawn By : Checked By : Drawing Number : Project Phase : Date : 12/12/2024 Scale : NOT TO SCALE Job Number : 1 Sheet : 4/5 Size : A3

