



PROJEK PENYEDIAAN DAN PENYELENGGARAAN POINT OF PRESENCE (POP)
FASA 2: HAB INFRASTRUKTUR GENTIAN OPTIK BERHAMPIRAN DENGAN
SEKOLAH, KAWASAN PERINDUSTRIAN, PREMIS KERAJAAN DAN KOMUNITI
SEKITARNYA OLEH KEMENTERIAN KOMUNIKASI MALAYSIA - ZON UTARA
(KKMM.400-11/17/132(1))



TECHNICAL PROPOSAL POP2 ABC0065 SJK(C) PEKAN PASIR (D-SIDE)

Company Name:	STEADCOM SDN BHD
Company Address:	11-3, Jalan Puteri 2/6, Bandar Puteri, 47100 Puchong, Selangor
Prepared By:	Fassya
Date:	17/12/2024



Starting Point

Site / Boundary Name	Sungkai
Address	SJK(C) PEKAN PASIR No. 1, Kampung Baru, Pekan Pasir, Bidor, Perak
District	Bidor
Postcode	35500
State	Perak
GPS Coordinate	4.068630, 101.287085
LRD	A

End Point

Site / Boundary Name	Sungkai
Address	Kampung Baharu Pekan Pasir
District	Bidor
Postcode	35500
State	Perak
GPS Coordinate	4.067885, 101.287583
LRD	B



PROJEK PENYEDIAAN DAN PENYELENGGARAAN POINT OF PRESENCE (POP)
FASA 2: HAB INFRASTRUKTUR GENTIAN OPTIK BERHAMPIRAN DENGAN
SEKOLAH, KAWASAN PERINDUSTRIAN, PREMIS KERAJAAN DAN KOMUNITI
SEKITARNYA OLEH KEMENTERIAN KOMUNIKASI MALAYSIA - ZON UTARA
(KKMM.400-11/17/132(1))

STEADCOM
A member of OCK Group Berhad

1.0 Work Summary

No	Proposed Distance and Method	Unit	Qty
1	Horizontal Directional Drilling (HDD)	m	0
2	Carriage Way Open trench (CW)	m	0
3	Grass Verge Open Trenching (GV)	m	0
4	Micro trenching (MT)	m	0
	Total		

	Other Information	Unit	Qty
1	Proposed Manhole	EA	0
2	Proposed Pole	EA	26
3	Joint Closure	EA	0
4	Estimated time required for completion	days	0



PROJEK PENYEDIAAN DAN PENYELENGGARAAN POINT OF PRESENCE (POP)
 FASA 2: HAB INFRASTRUKTUR GENTIAN OPTIK BERHAMPIRAN DENGAN
 SEKOLAH, KAWASAN PERINDUSTRIAN, PREMIS KERAJAAN DAN KOMUNITI
 SEKITARNYA OLEH KEMENTERIAN KOMUNIKASI MALAYSIA - ZON UTARA
 (KKMM.400-11/17/132(1))



2.0 LOCAL AUTHORITY SUMMARY

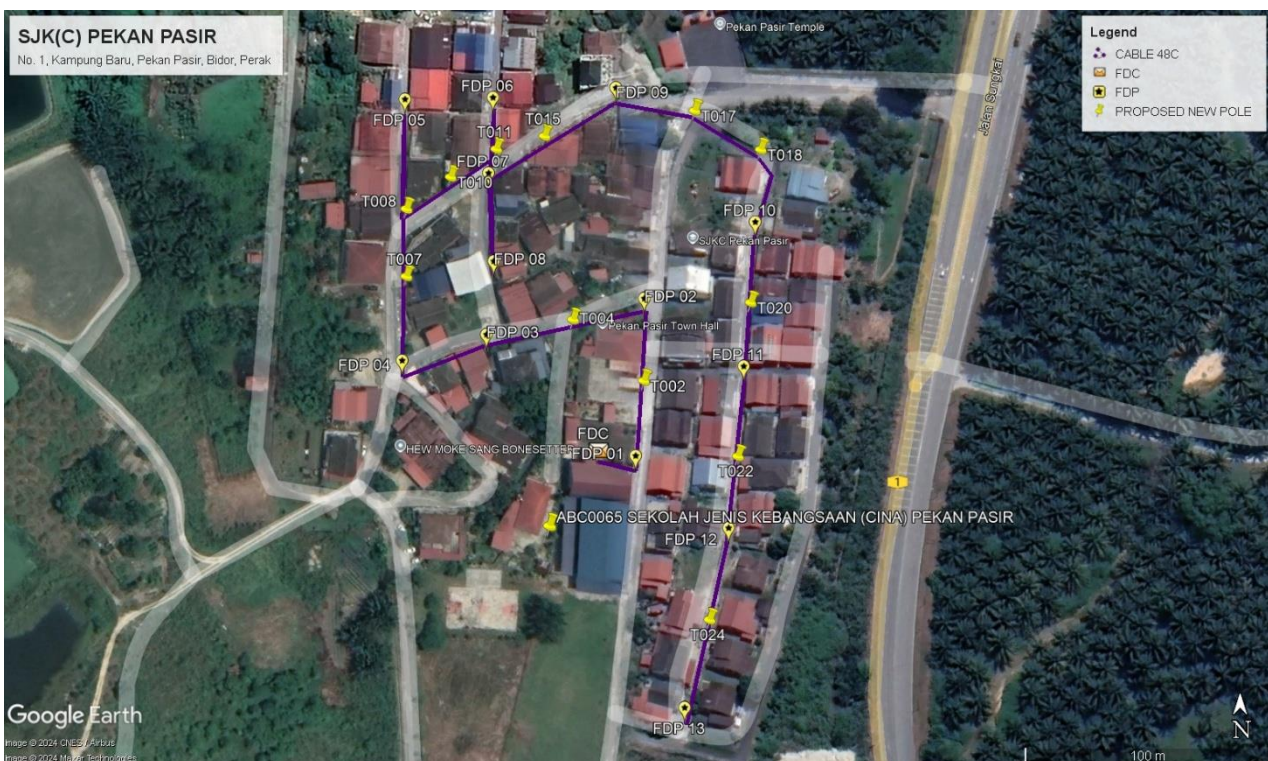
Daerah Tapah

Bil	Items	Owner	Quantity	Distance
1	HDD	JKR	-	-
		Majlis	-	-
		Estate / Private Land	-	-
2	New Pole	JKR	-	-
		Majlis	26	754m
		Estate / Private Land	-	-
3	Existing TNB Pole	JKR	-	-
		Majlis	-	-
		Estate / Private Land	-	-
Total				754m

3.0 SITE PLAN KMZ (Overview site area)
3.1 Proposed FDP and Closure



3.2 Proposed New Pole



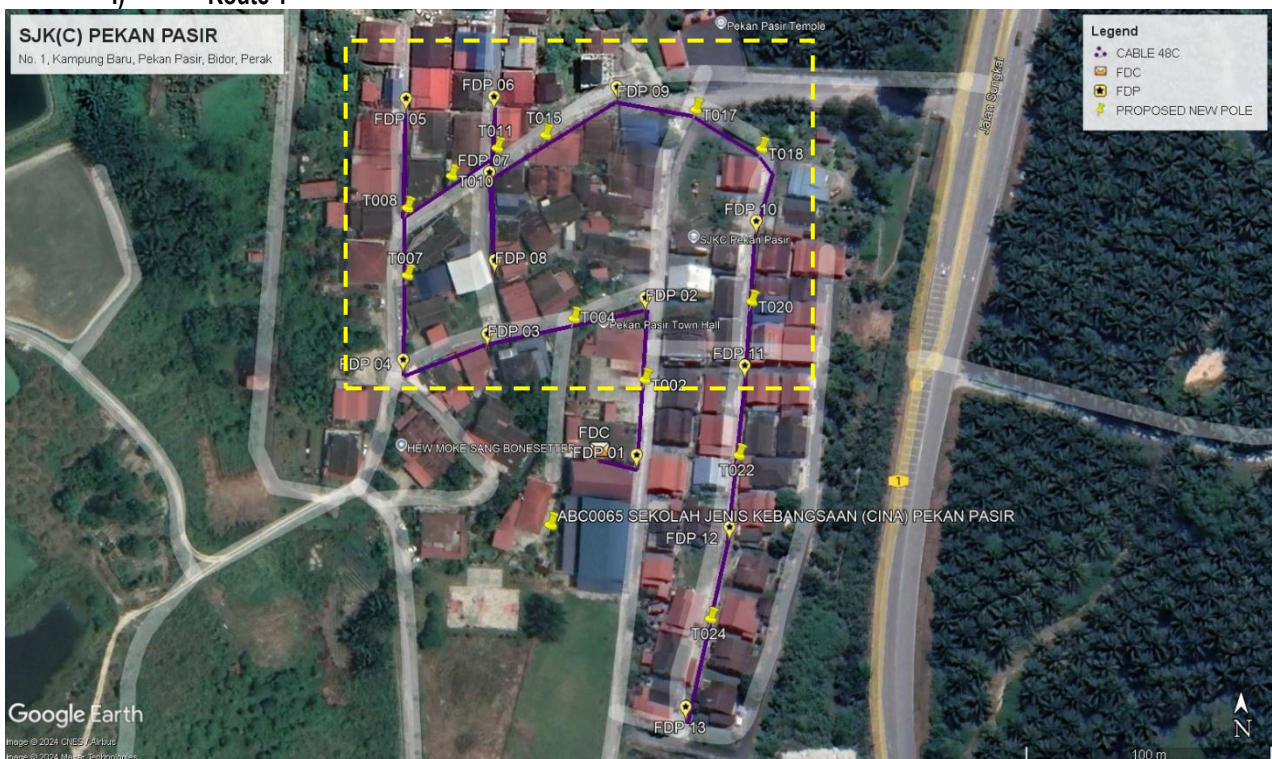
3.3 Site Plan KMZ Routing (All Local Authority)

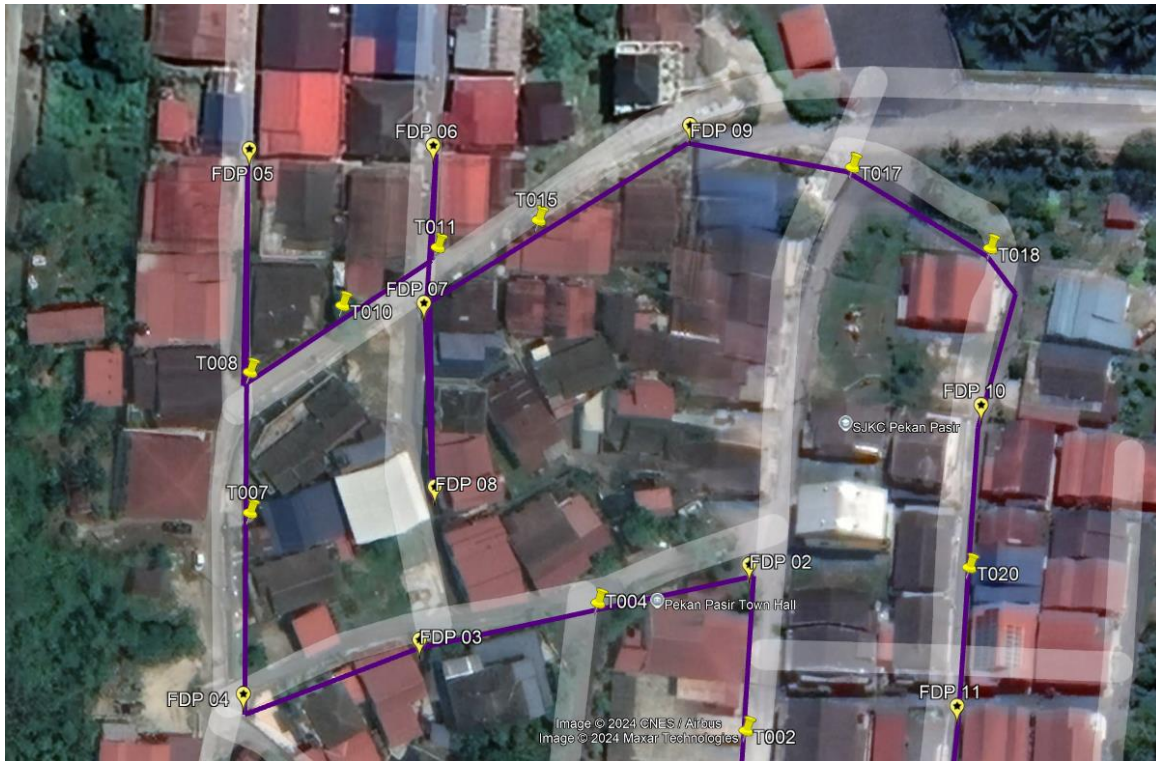


Purple Colour – PBT Road

3.4 Site Plan – KMZ (All site Area)

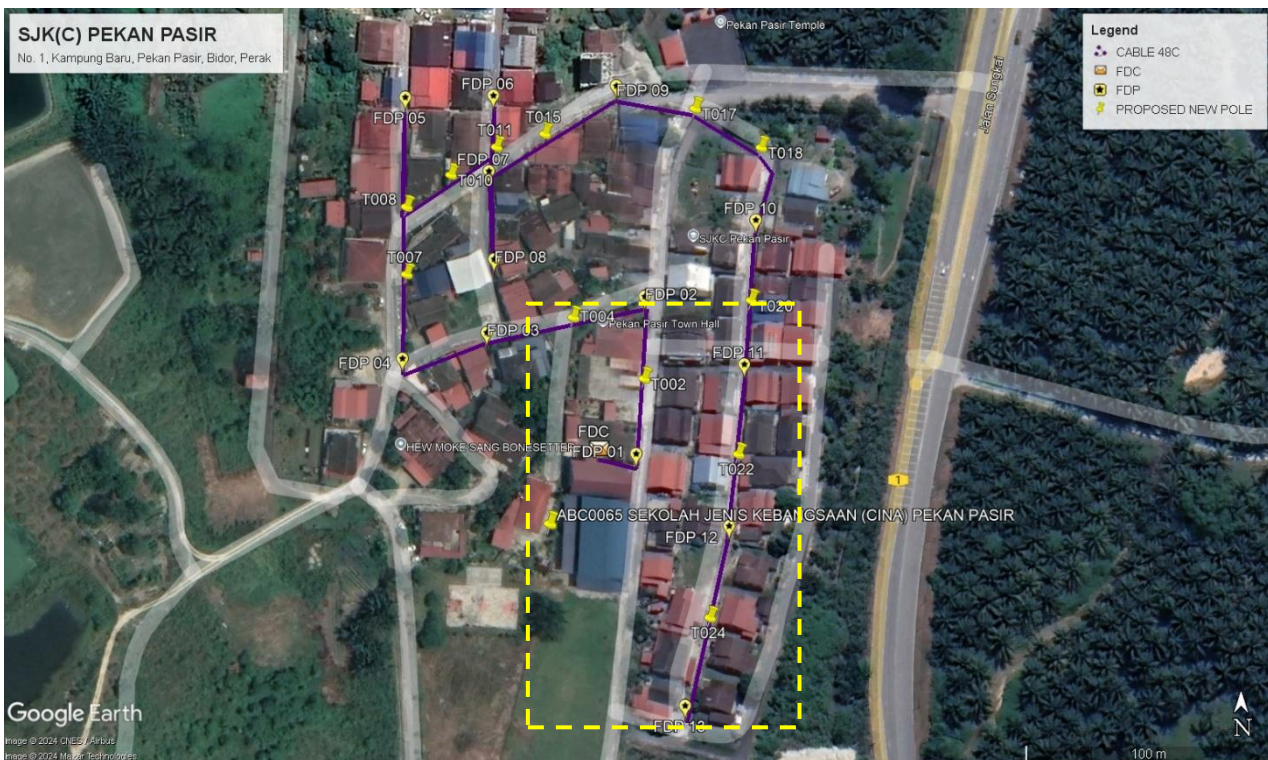
i) Route 1

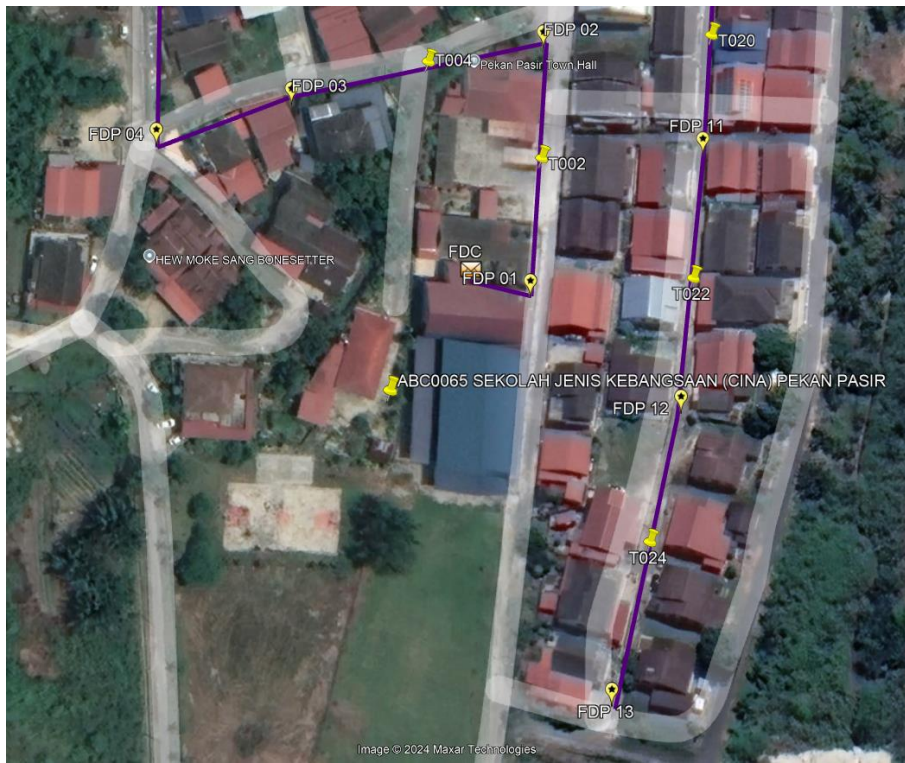




Route: 1.1

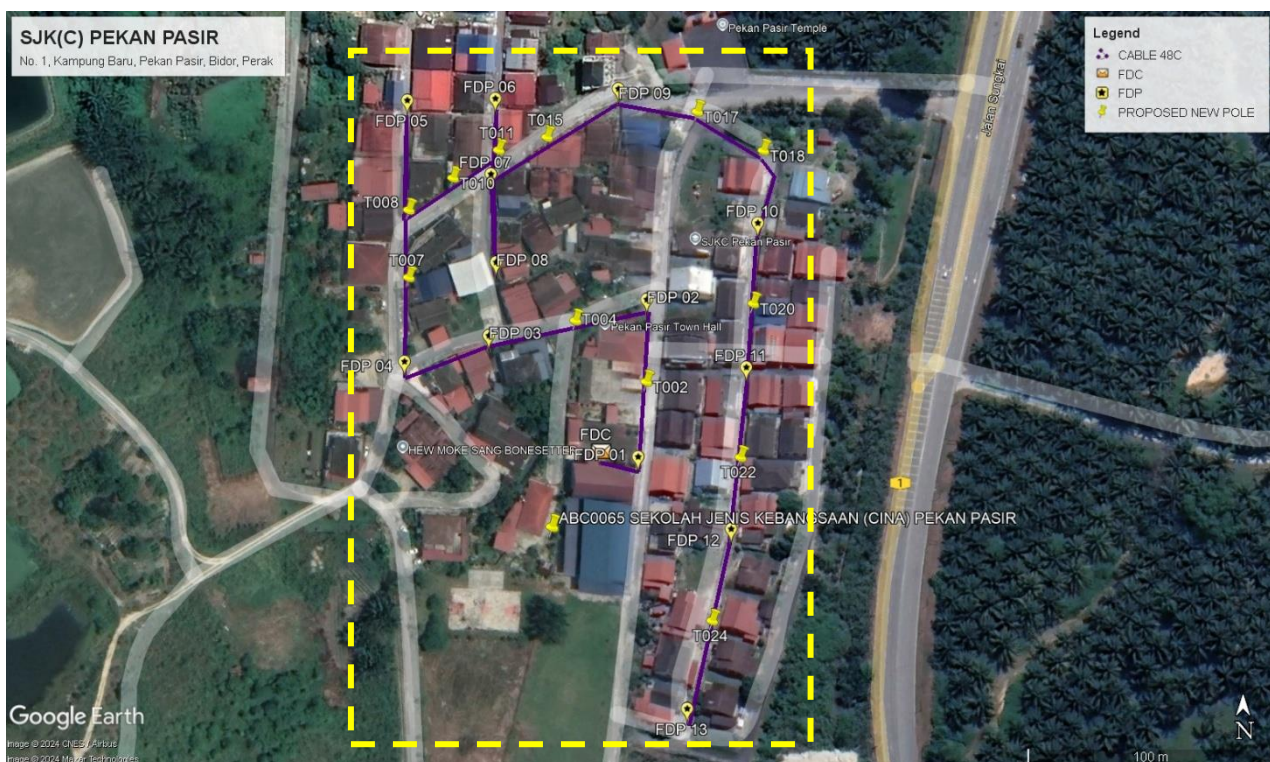
ii) Route 2





Route:2.1

3.5 Site Plan – KMZ Routing (Proposed New Pole)





PROJEK PENYEDIAAN DAN PENYELENGGARAAN POINT OF PRESENCE (POP)
 FASA 2: HAB INFRASTRUKTUR GENTIAN OPTIK BERHAMPIRAN DENGAN
 SEKOLAH, KAWASAN PERINDUSTRIAN, PREMIS KERAJAAN DAN KOMUNITI
 SEKITARNYA OLEH KEMENTERIAN KOMUNIKASI MALAYSIA - ZON UTARA
 (KKMM.400-11/17/132(1))



4.0 Proposed New Pole Lat & long Table

No.	Label	Pole & Manhole ID	Latitud	Longitud	Local Authority
1	FDC	T000	4.0689028	101.2872759	MAJLIS DAERAH TAPAH
2	FDP 01	T001	4.0688666	101.2874109	MAJLIS DAERAH TAPAH
3	FDP 02	T003	4.0694403	101.2874425	MAJLIS DAERAH TAPAH
4	FDP 03	T005	4.0693087	101.2868647	MAJLIS DAERAH TAPAH
5	FDP 04	T006	4.0692139	101.286556	MAJLIS DAERAH TAPAH
6	FDP 05	T009	4.0701666	101.2865666	MAJLIS DAERAH TAPAH
7	FDP 06	T012	4.070173	101.2868887	MAJLIS DAERAH TAPAH
8	FDP 07	T013	4.0698975	101.2868725	MAJLIS DAERAH TAPAH
9	FDP 08	T014	4.0695761	101.2868915	MAJLIS DAERAH TAPAH
10	FDP 09	T016	4.0702085	101.2873386	MAJLIS DAERAH TAPAH
11	FDP 10	T019	4.0697192	101.2878488	MAJLIS DAERAH TAPAH
12	FDP 11	T021	4.0691929	101.2878066	MAJLIS DAERAH TAPAH
13	FDP 12	T023	4.0686034	101.2877512	MAJLIS DAERAH TAPAH
14	FDP 13	T025	4.0679481	101.2875903	MAJLIS DAERAH TAPAH



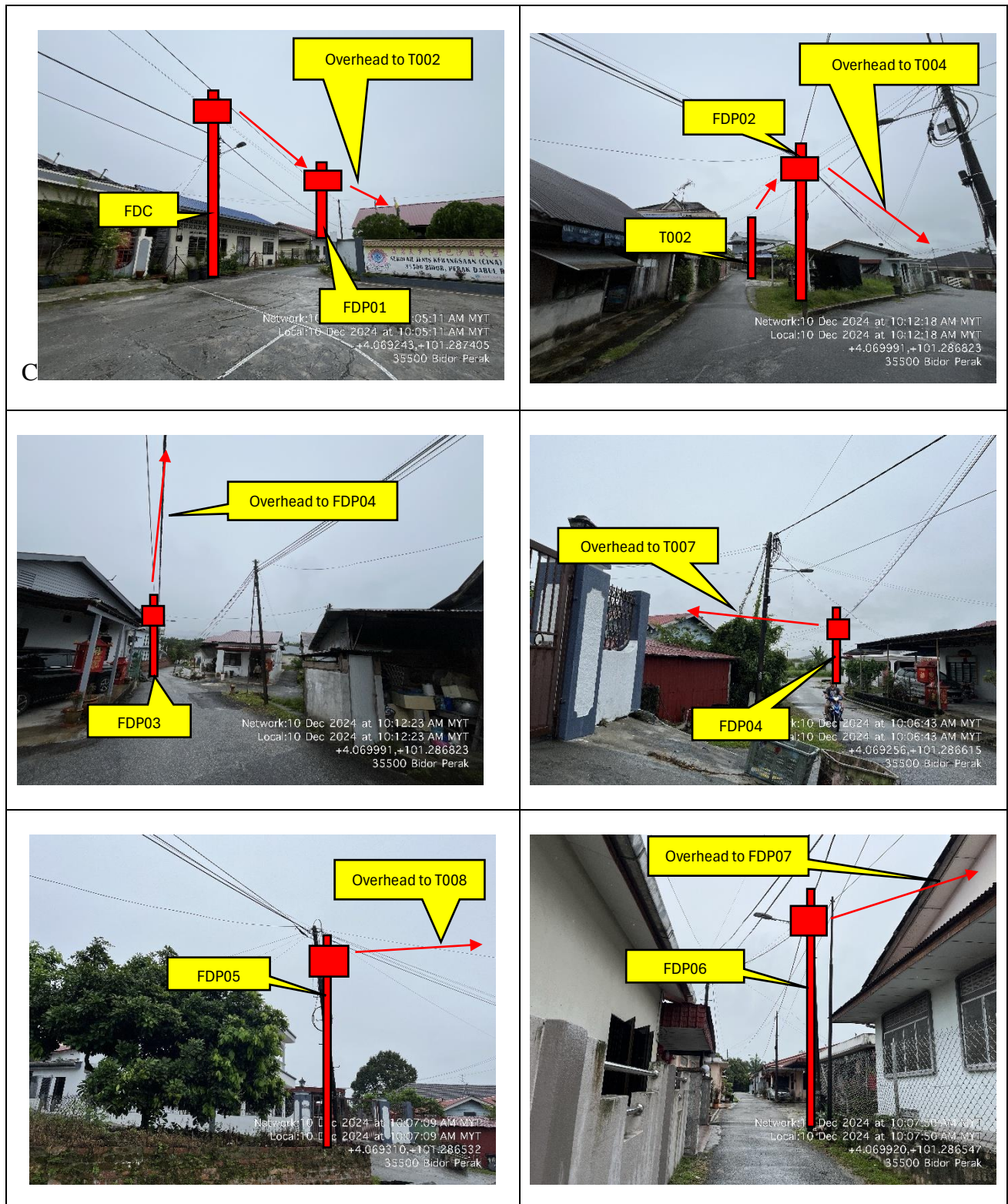
PROJEK PENYEDIAAN DAN PENYELENGGARAAN POINT OF PRESENCE (POP)
 FASA 2: HAB INFRASTRUKTUR GENTIAN OPTIK BERHAMPIRAN DENGAN
 SEKOLAH, KAWASAN PERINDUSTRIAN, PREMIS KERAJAAN DAN KOMUNITI
 SEKITARNYA OLEH KEMENTERIAN KOMUNIKASI MALAYSIA - ZON UTARA
 (KKMM.400-11/17/132(1))

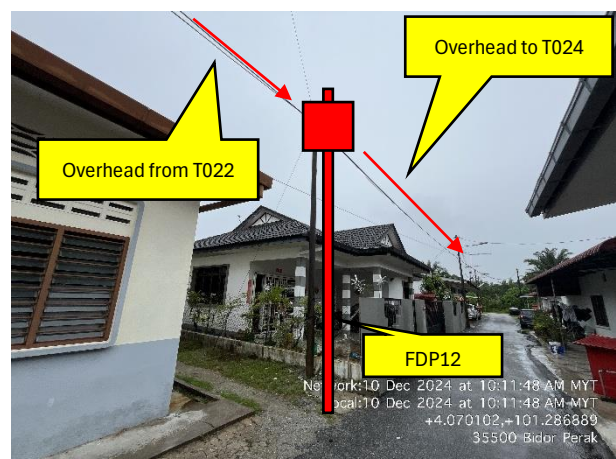
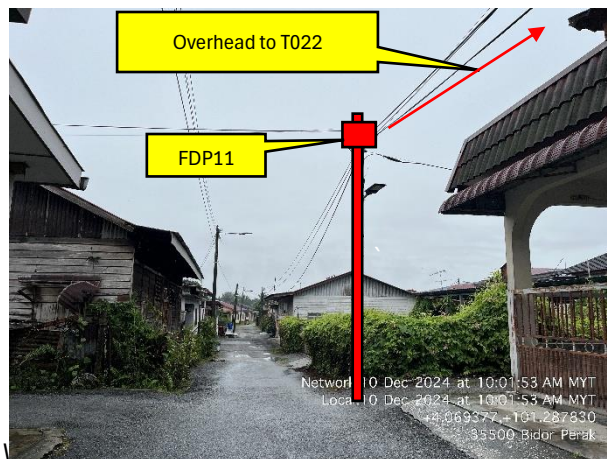
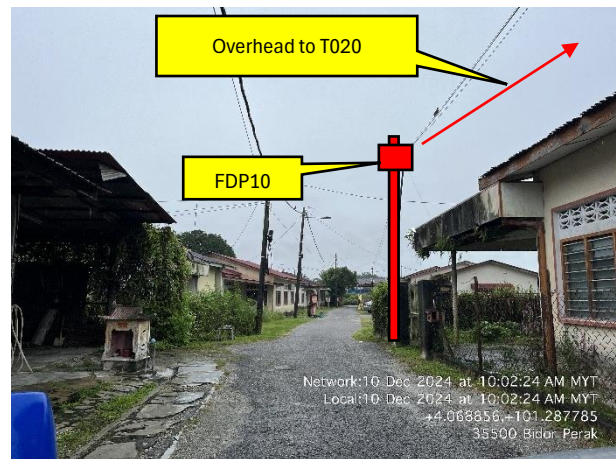
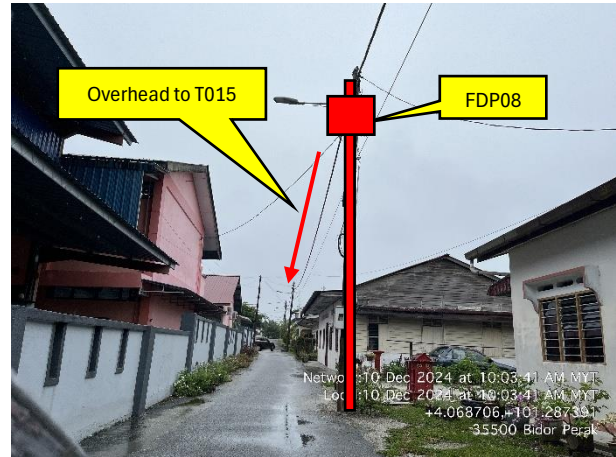
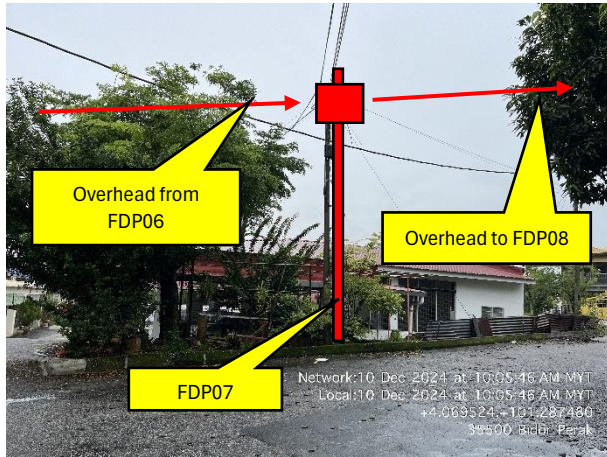


4.1 Overall Pole (Proposed New Pole)

No.	Pole & Manhole ID	Distance	Latitud	Longitud	Local Authority
1	T000	0	4.0689028	101.2872759	MAJLIS DAERAH TAPAH
2	T001	16	4.0688666	101.2874109	MAJLIS DAERAH TAPAH
3	T002	33	4.0691629	101.2874311	MAJLIS DAERAH TAPAH
4	T003	31	4.0694403	101.2874425	MAJLIS DAERAH TAPAH
5	T004	31	4.0693862	101.2871717	MAJLIS DAERAH TAPAH
6	T005	35	4.0693087	101.2868647	MAJLIS DAERAH TAPAH
7	T006	36	4.0692139	101.286556	MAJLIS DAERAH TAPAH
8	T007	36	4.0695433	101.2865617	MAJLIS DAERAH TAPAH
9	T008	27	4.0697894	101.2865618	MAJLIS DAERAH TAPAH
10	T009	42	4.0701666	101.2865666	MAJLIS DAERAH TAPAH
11	T010	22	4.069906	101.286724	MAJLIS DAERAH TAPAH
12	T011	22	4.0700076	101.286891	MAJLIS DAERAH TAPAH
13	T012	18	4.070173	101.2868887	MAJLIS DAERAH TAPAH
14	T013	12	4.0698975	101.2868725	MAJLIS DAERAH TAPAH
15	T014	36	4.0695761	101.2868915	MAJLIS DAERAH TAPAH
16	T015	28	4.070055	101.2870675	MAJLIS DAERAH TAPAH
17	T016	35	4.0702085	101.2873386	MAJLIS DAERAH TAPAH
18	T017	32	4.0701478	101.2876174	MAJLIS DAERAH TAPAH
19	T018	31	4.0700059	101.2878593	MAJLIS DAERAH TAPAH
20	T019	32	4.0697192	101.2878488	MAJLIS DAERAH TAPAH
21	T020	30	4.0694481	101.2878223	MAJLIS DAERAH TAPAH
22	T021	28	4.0691929	101.2878066	MAJLIS DAERAH TAPAH
23	T022	34	4.0688875	101.2877753	MAJLIS DAERAH TAPAH
24	T023	32	4.0686034	101.2877512	MAJLIS DAERAH TAPAH
25	T024	36	4.0682911	101.2876718	MAJLIS DAERAH TAPAH
26	T025	39	4.0679481	101.2875903	MAJLIS DAERAH TAPAH

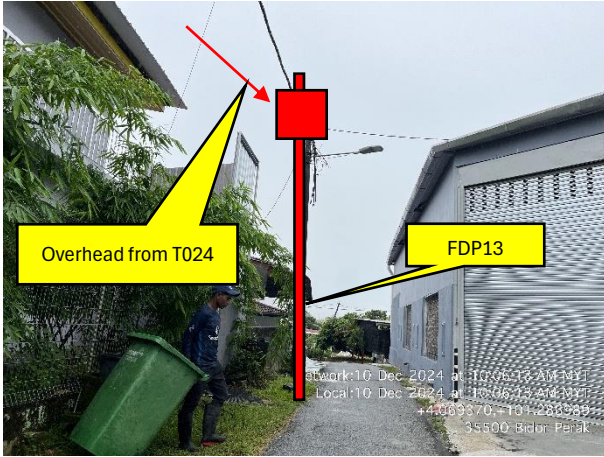
5.0 SITE PHOTO – PROPOSED NEW POLE







PROJEK PENYEDIAAN DAN PENYELENGGARAAN POINT OF PRESENCE (POP)
FASA 2: HAB INFRASTRUKTUR GENTIAN OPTIK BERHAMPIRAN DENGAN
SEKOLAH, KAWASAN PERINDUSTRIAN, PREMIS KERAJAAN DAN KOMUNITI
SEKITARNYA OLEH KEMENTERIAN KOMUNIKASI MALAYSIA - ZON UTARA
(KKMM.400-11/17/132(1))



N/A

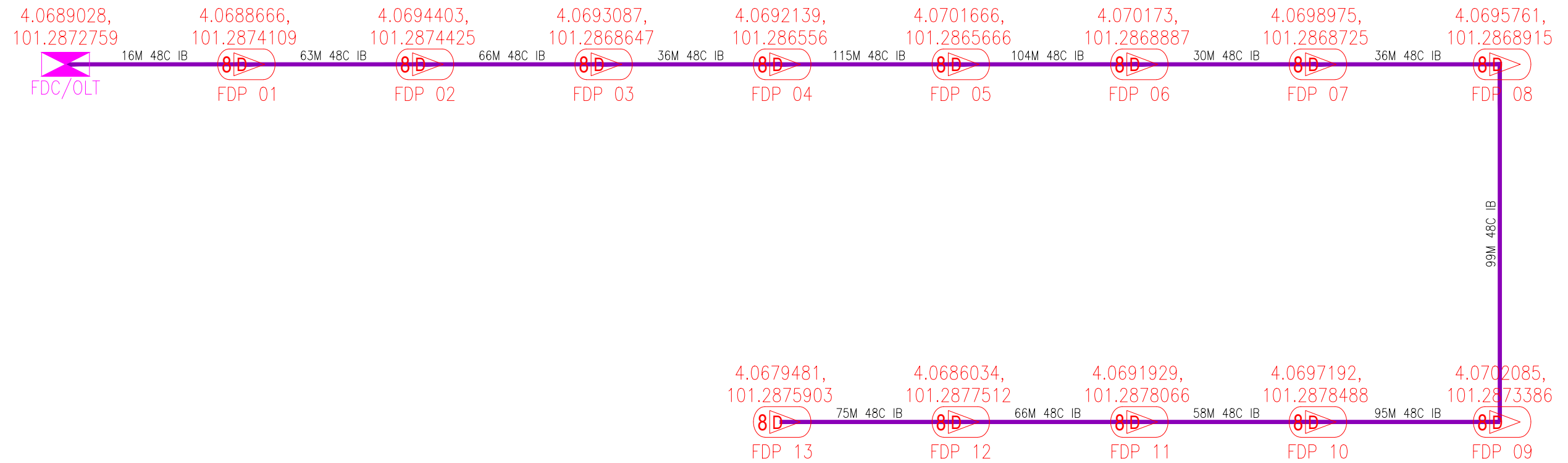


PROJEK PENYEDIAAN DAN PENYELENGGARAAN POINT OF PRESENCE (POP)
FASA 2: HAB INFRASTRUKTUR GENTIAN OPTIK BERHAMPIRAN DENGAN
SEKOLAH, KAWASAN PERINDUSTRIAN, PREMIS KERAJAAN DAN KOMUNITI
SEKITARNYA OLEH KEMENTERIAN KOMUNIKASI MALAYSIA - ZON UTARA
(KKMM.400-11/17/132(1))



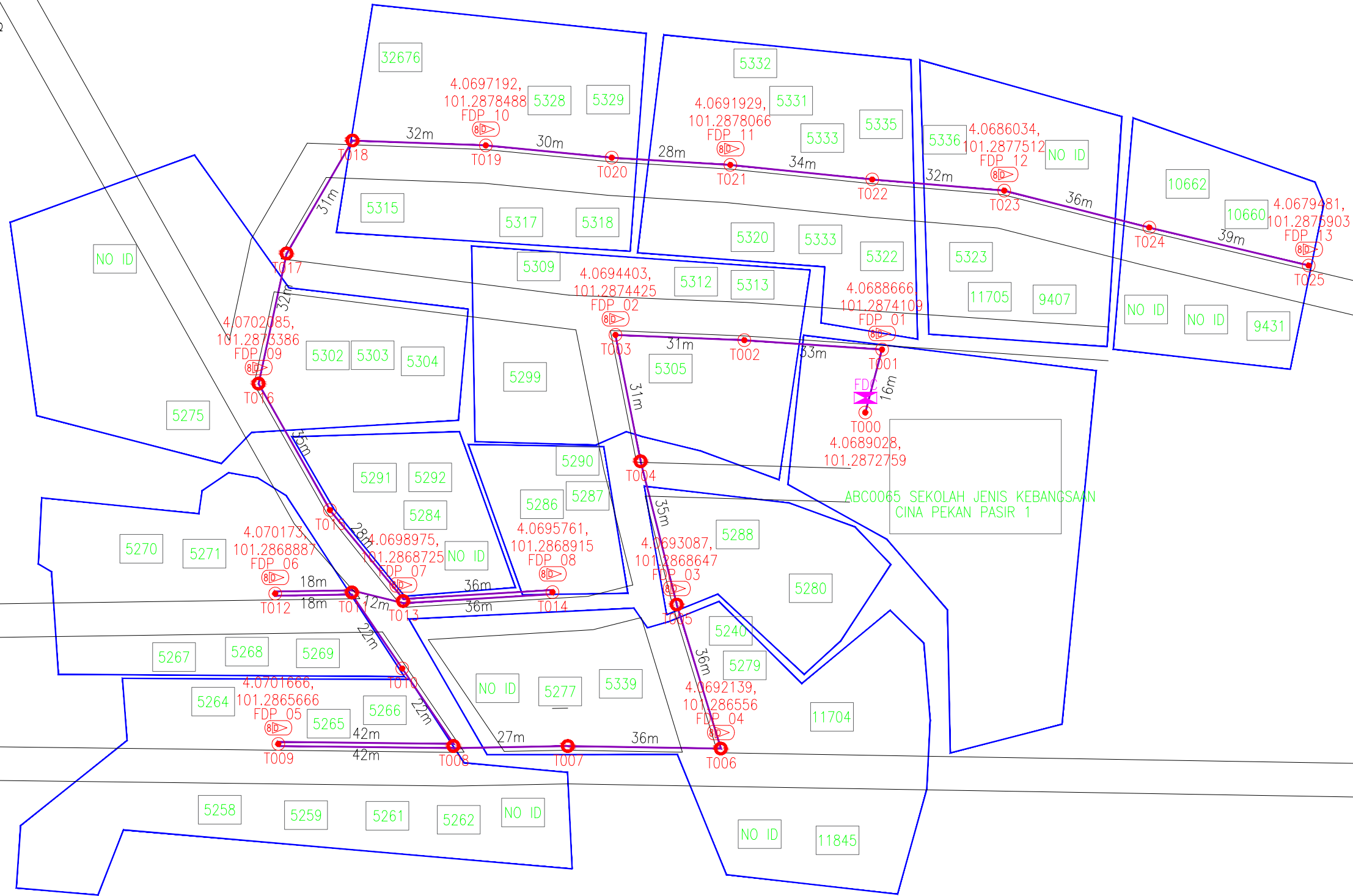
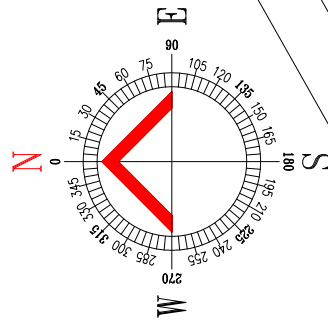
6.0 3rd PARTIES DEPENDENCIES

NO	LOCAL COUNCIL / AUTHORITY	REMARK
1	N/A	



LEGEND	NOS.		NOS.		NOS.		NOS.		NOS.		NOS.
	12C FOC	Installed 1:4 splitter in FDC		Installed Pole (9m)		New Manhole(JRC7)		Tension Small / Tension Big		MH NO.	
	24C FOC	FDP with (1:8) splitter		Installed Riser		House Number		Existing Manhole		Existing TNB Pole NO.	
	48C FOC	Closure		Suspension Big		Existing TNB Pole		Closure NO.		New Pole NO.	
	96C FOC	New Manhole (PIT)		Suspension Small		LOOP		FDP NO.		SEE A-A in this page	
	144C FOC	Installed Pole (7.5M)		FDC		FDP Boundary		FDC NO.		SEE SHEET XXX	

KEY PLAN : POP2 PROJECT IN PERAK	MAIN CONTRACTOR 	SUB-CONTRACTOR : A member of FOCK Group Berhad	PROJECT TITLE : CONTRACTOR FOR SURVEY, TECHNICAL PROPOSAL AND WAYLEAVE,& PERMIT APPROVAL -POP2 PROJECT	DRAWING TITLE: SINGLE LINE DRAWING ABC0065 SEKOLAH JENIS KEBANGSAAN (CINA) PEKAN PASIR	Design By : FITRI	Date : 17/12/2024
				PROJECT PHASE: POP2	Checked By : AMSYAR	Job Number : JOB_NUMBER
				DRAWING NUMBER : ABD0065-SLD-01	Sheet : 1/1	Size : A3
THIS PRINT AND ITS COPYRIGHT ARE THE PROPERTY OF ALLO TECHNOLOGY SDN BHD						



LEGEND	NOS.	NOS.	NOS.	NOS.	NOS.	NOS.	NOS.
	12C FOC		Installed Pole (9m)		New Manhole(JRC7)		Tension Small / Tension Big
	24C FOC		Installed Riser		House Number		Existing Manhole
	48C FOC		Suspension Big		Existing TNB Pole		Closure NO.
	96C FOC		Suspension Small		LOOP		FDP1 FDP NO.
	144C FOC		FDC		FDP Boundary		FDC NO.
			Installed 1:4 splitter in FDC		Installed Pole (7.5M)		MH1 MH NO.
			FDP with (1:8) splitter		Installed Pole (9m)		TKS-1 Existing TNB Pole NO.
			Closure		Installed Pole (9m)		P001 New Pole NO.
			New Manhole (PIT)		Installed Pole (9m)		
			Installed Pole (7.5M)		Installed Pole (9m)		

ACTUAL HOMEPASS :

KEY PLAN : POP2 PROJECT IN PERAK	MAIN CONTRACTOR PRIVASAT	SUB-CONTRACTOR : A member of OOCK Group Berhad	PROJECT TITLE : CONTRACTOR FOR SURVEY, TECHNICAL PROPOSAL AND WAYLEAVE, & PERMIT APPROVAL -POP2 PROJECT	DRAWING TITLE: CONSTRUCTION DRAWING ABC0065 SEKOLAH JENIS KEBANGSAAN (CINA) PEKAN PASIR PROJECT PHASE: POP2	Design By : FITRI	Date : 17/12/2024
					Drawn By : FITRI	Scale : N.T.S
					Checked By : AMSYAR	Job Number : JOB_NUMBER
					DRAWING NUMBER : ABD0065-CD-01	Sheet : INDEX
					THIS PRINT AND ITS COPYRIGHT ARE THE PROPERTY OF ALLO TECHNOLOGY SDN BHD	Size : A3