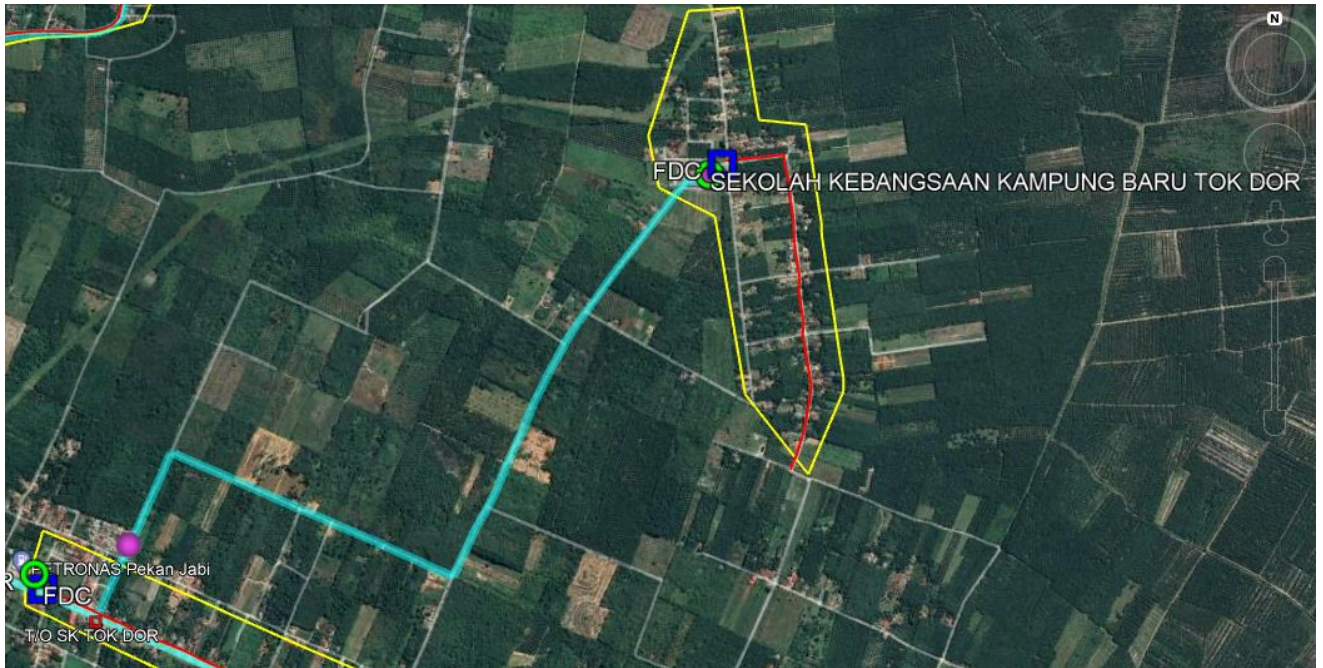


## 2.0 BUTIRAN JALAN TERLIBAT

2.1	NAMA JALAN	DAERAH	KAEDAH KERJA	KOORDINAT MULA	KOORDINAT AKHIR	JARAK (METER)
	JALAN KAMPUNG BARU TOK DOR	BESUT	Plinth	5.667945, 102.647626		1 X 1 Meter
	JALAN KAMPUNG BARU TOK DOR	BESUT	Kabinet	5.667945, 102.647626		1 X 1 Meter
	JALAN KAMPUNG BARU TOK DOR, JALAN KG ANAK IKAN DALAM	BESUT	Aerial Fiber Routing Backhaul (Anggaran)	5.667945, 102.647626	5.654675, 102.626252	3595 Meter (Anggaran)
	JALAN KAMPUNG BARU TOK DOR	BESUT	Aerial Fiber Routing GPON (Anggaran)	5.667945, 102.647626	5.658414, 102.649847	1316 Meter (Anggaran)
JUMLAH JARAK PERMOHONAN						4911 Meter

# CADANGAN TEKNIKAL UNTUK

## SEKOLAH KEBANGSAAN KAMPUNG BARU TOK DOR



### MAKLUMAT CADANGAN TEKNIKAL

Nama Site:	Sekolah Kebangsaan Kampung Baru Tok Dor
Site ID:	TBA0033
Lokasi PoP Kabinet:	Jalan Kampung Baru Tok Dor
GPS Koordinat:	5.667945, 102.647626
Lokasi Laluan Fiber	Jalan Kampung Baru Tok Dor, Jalan Kg Anak Ikan Dalam
GPS Koordinat Backhaul: (Titik Mula-Anggaran)	5.667945, 102.647626
GPS Koordinat Backhaul: (Titik Akhir-Anggaran)	5.654675, 102.626252
GPS Koordinat GPON: (Titik Mula-Anggaran)	5.667945, 102.647626
GPS Koordinat GPON: (Titik Akhir-Anggaran)	5.658414, 102.649847
Tarikh:	28/02/2024

## Kandungan:

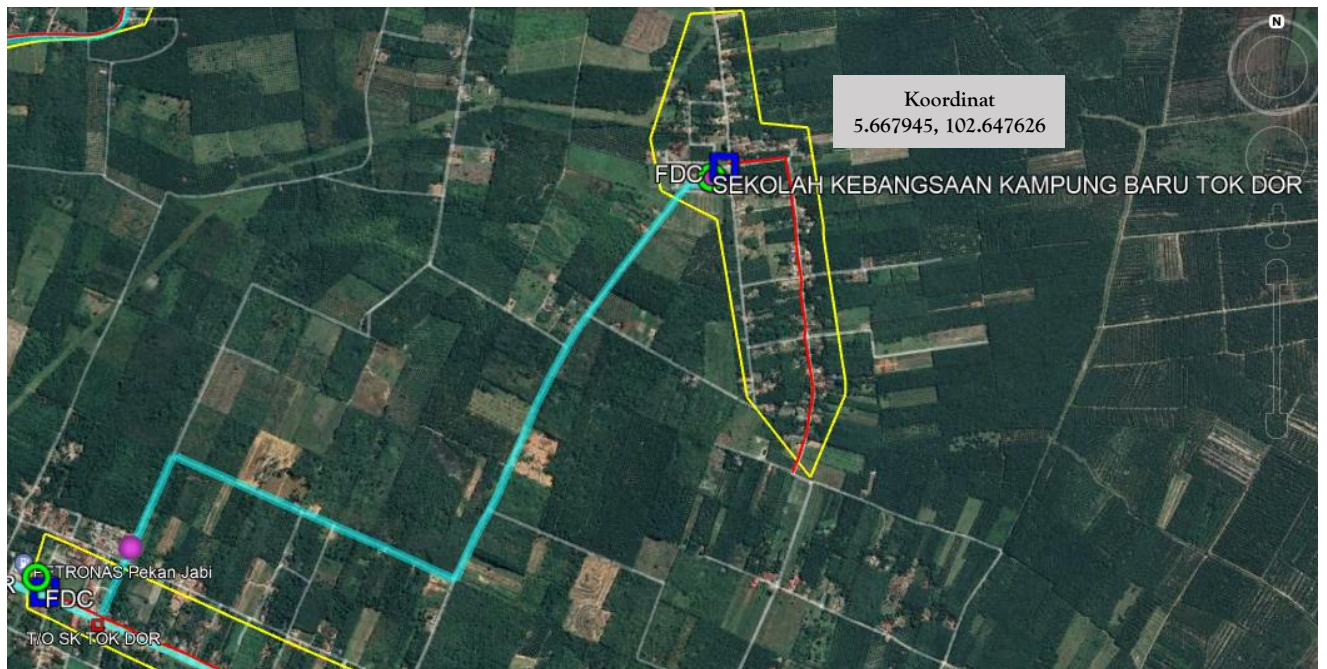
1. Ringkasan Pelaksanaan
2. Peta Penandaan Lokasi (Plinth Kabinet)
3. Gambar Lokasi (*Plinth* Kabinet)
4. Cadangan Laluan Kabel Fiber Pole
5. Cadangan Jadual & Skop Kerja Pelaksanaan PoP *Plinth* Kabinet
6. Cadangan Jadual & Skop Kerja Pelaksanaan Fiber

# 1. RINGKASAN PELAKSANAAN

## 1.1 Cadangan Pelaksanaan

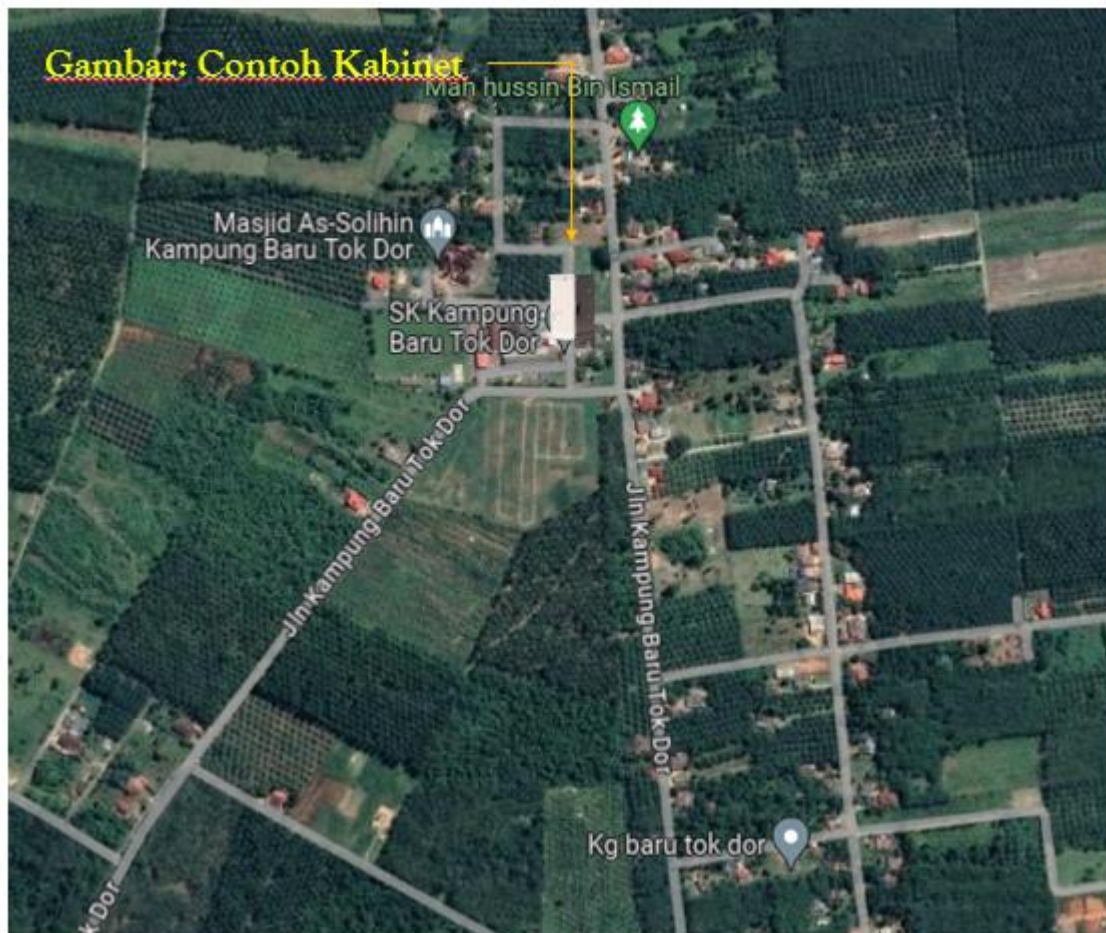
Bil	Perkara	Kuantiti
1	PoP <i>Plinth</i> Kabinet Satu (1) unit	1
2	Jumlah Cadangan Fiber Pole 122 poles	122
3	Jumlah Jarak Fiber Pole (Anggaran) Backhul - 3595m GPON - 1316m	4911m

## 2. PETA PENANDAAN LOKASI *PLINTH* KABINET (PoP)



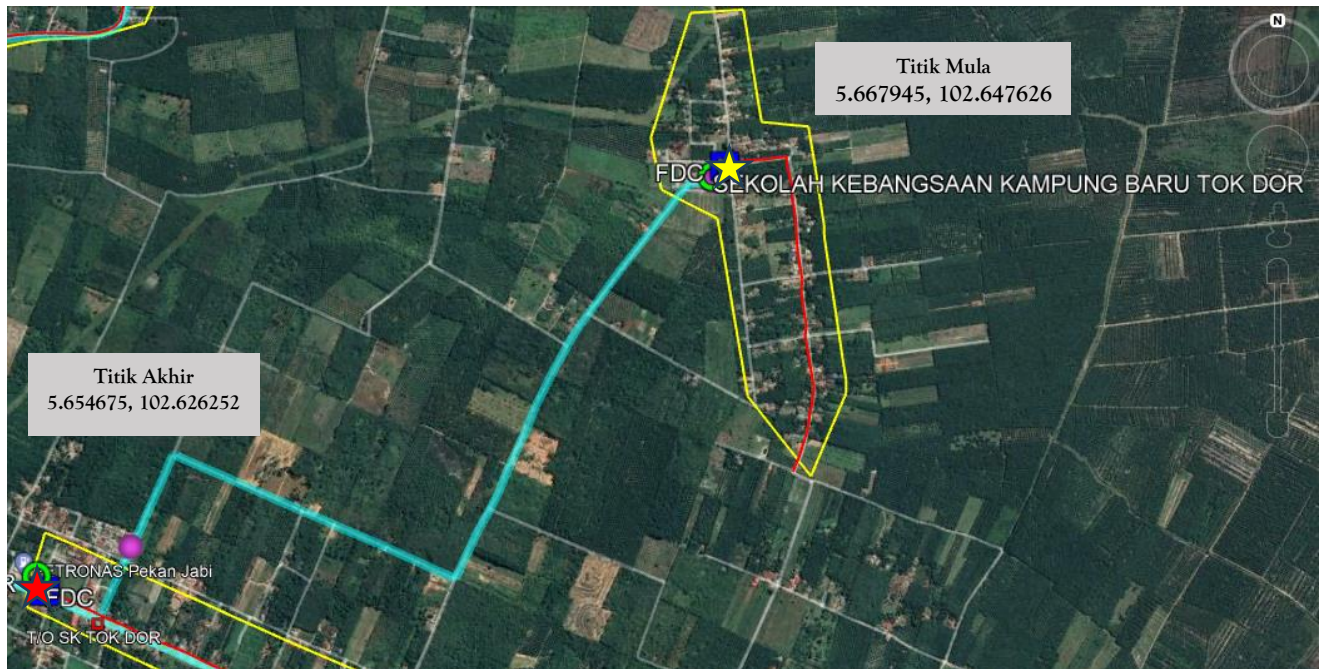
-  SEKOLAH KEBANGSAAN KAMPUNG BARU TOK DOR (TBA0033)
-  POP








### 3. GAMBAR LOKASI *PLINTH* KABINET (PoP)



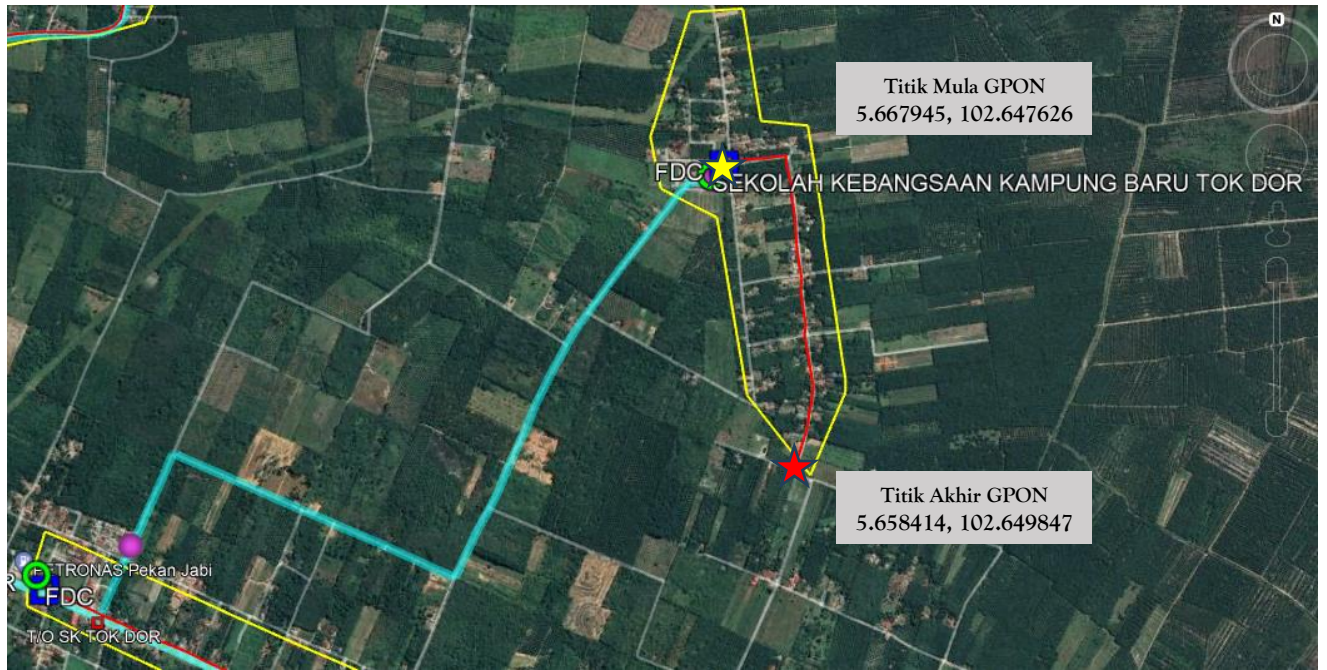
#### 4. CADANGAN LALUAN KABEL FIBER POLE (ANGGARAN)









##### Backhaul



-  Kawasan Sempadan Fiber Servis
-  Laluan Kabel Fiber (Main GPON)
-  Laluan Kabel Fiber (Backhaul)
-  Laluan Kabel Fiber (Under Ground)
  
-  Sekolah
-  POP
-  Titik Mula Fiber
-  Titik Akhir Fiber

# GPON



-  Kawasan Sempadan Fiber Servis
-  Laluan Kabel Fiber (Main GPON)
-  Laluan Kabel Fiber (Backhaul)
-  Laluan Kabel Fiber (Under Ground)
-  Sekolah
-  POP
-  Titik Mula Fiber
-  Titik Akhir Fiber

**5. CADANGAN JADUAL & SKOP KERJA AWAL  
PELAKSANAAN  
PoP *PLINTH*KABINET**

Bil	Perkara	Hari	1	2	3	4	5	6	7	8	9	10	11	12	13	14
1	<u>Kerja Civil, Teknikal dan, Elektrikal</u>															
1.1	Persiapan di Tapak	1														
1.2	Kerja Pemasangan <i>Plinth</i> PoP	1														
1.3	Kerja Pemasangan Kabinet, FDC & rectifier	1														

## 6. CADANGAN JADUAL & SKOP KERJA PELAKSANAAN FIBER

Bil	Perkara	Bulan /Minggu															
		Apr 2024			Mei 2024			Jun 2024									
		Minggu 3-4			Minggu 1-4			Minggu 1-2		Minggu 3-4							
1	Persiapan di Tapak	■															
2	Kerja Pengesahan Kabel	■															
3	Kerja Pengorekan		■	■													
4	Kerja Rentang Kabel				■	■	■										
5	Kerja Menimbus Tanah							■	■								
6	Kerja Penurapan Jalan/Pembersihan Tapak									■	■						
7	<i>Integration, Testing &amp; Commissioning</i>											■	■	■			
8	Selesai																■

-Tamat-