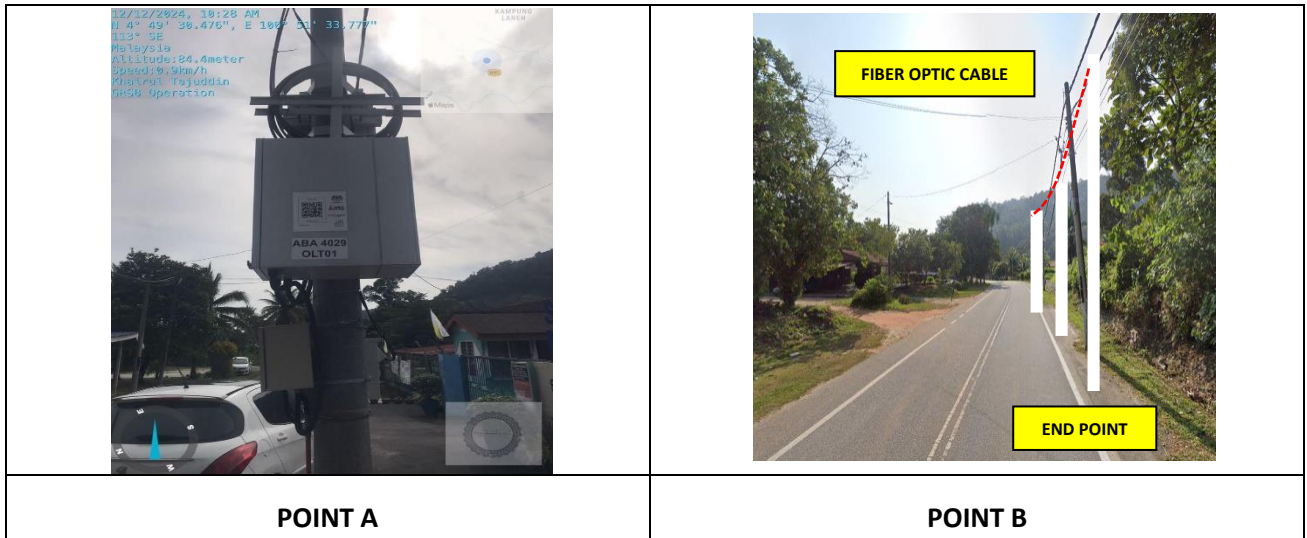


TECHNICAL PROPOSAL ABA4029 SEKOLAH KEBANGSAAN LANEH (D-SIDE)

Company Name : ARATIMUR SDN BHD
Company Address : A-08-13, 8th Floor, Block A, Radia Office, Persiaran Singgahsana, 40150 Bukit Jelutong, Shah Alam, Selangor
Prepared By : Khairul Tajuddin
Date : 18/02/2025



Starting Point

Site / Boundary Name : Sekolah Kebangsaan Laneh
 Address : Kampung Laneh Lubok Merbau
 District : Kuala Kangsar
 Postcode : 33010
 State : Perak
 GPS Coordinate : 4.825045, 100.859418
 LRD : A

End Point

Site / Boundary Name : 15-58. A107
 Address : Kampung Labu Kubong,
 District : Kuala Kangsar
 Postcode : 33010
 State : Perak
 GPS Coordinate : 4.821238, 100.869927
 LRD : B



**PROJEK PENYEDIAAN DAN PENYELENGGARAAN POINT OF PRESENCE (POP)
 FASA 2: HAB INFRASTRUKTUR GENTIAN OPTIK BERHAMPIRAN DENGAN
 SEKOLAH, KAWASAN PERINDUSTRIAN, PREMIS KERAJAAN DAN KOMUNITI
 SEKITARNYA OLEH KEMENTERIAN KOMUNIKASI MALAYSIA - ZON UTARA
 (KKMM.400-11/17/132(1))**



1.0 WORK SUMMARY

NO	PROPOSED DISTANCE AND METHOD	UNIT	QUANTITY
1	Horizontal Directional Drilling (HDD)	m	12m
2	Carriage Way Open Trench (CW)	m	0
3	Grass Verge Open Trenching (GV)	m	0
4	Micro Trenching (MT)	m	0
		Total	12m

NO	OTHER INFORMATION	UNIT	QUANTITY
1	Installation of Short Span ADSS Fibre Cables	m	5444
2	Install New Pole	ea	147
3	Install New JRC7 Manhole	ea	2
4	Install GI Riser 100mm	ea	2
5	Install Fiber Distribution Point and Closure (Splicing, Termination and Testing	ea	17
6	Estimated Time Required For Completion	days	30



PROJEK PENYEDIAAN DAN PENYELENGGARAAN POINT OF PRESENCE (POP)
 FASA 2: HAB INFRASTRUKTUR GENTIAN OPTIK BERHAMPIRAN DENGAN
 SEKOLAH, KAWASAN PERINDUSTRIAN, PREMIS KERAJAAN DAN KOMUNITI
 SEKITARNYA OLEH KEMENTERIAN KOMUNIKASI MALAYSIA - ZON UTARA
 (KKMM.400-11/17/132(1))



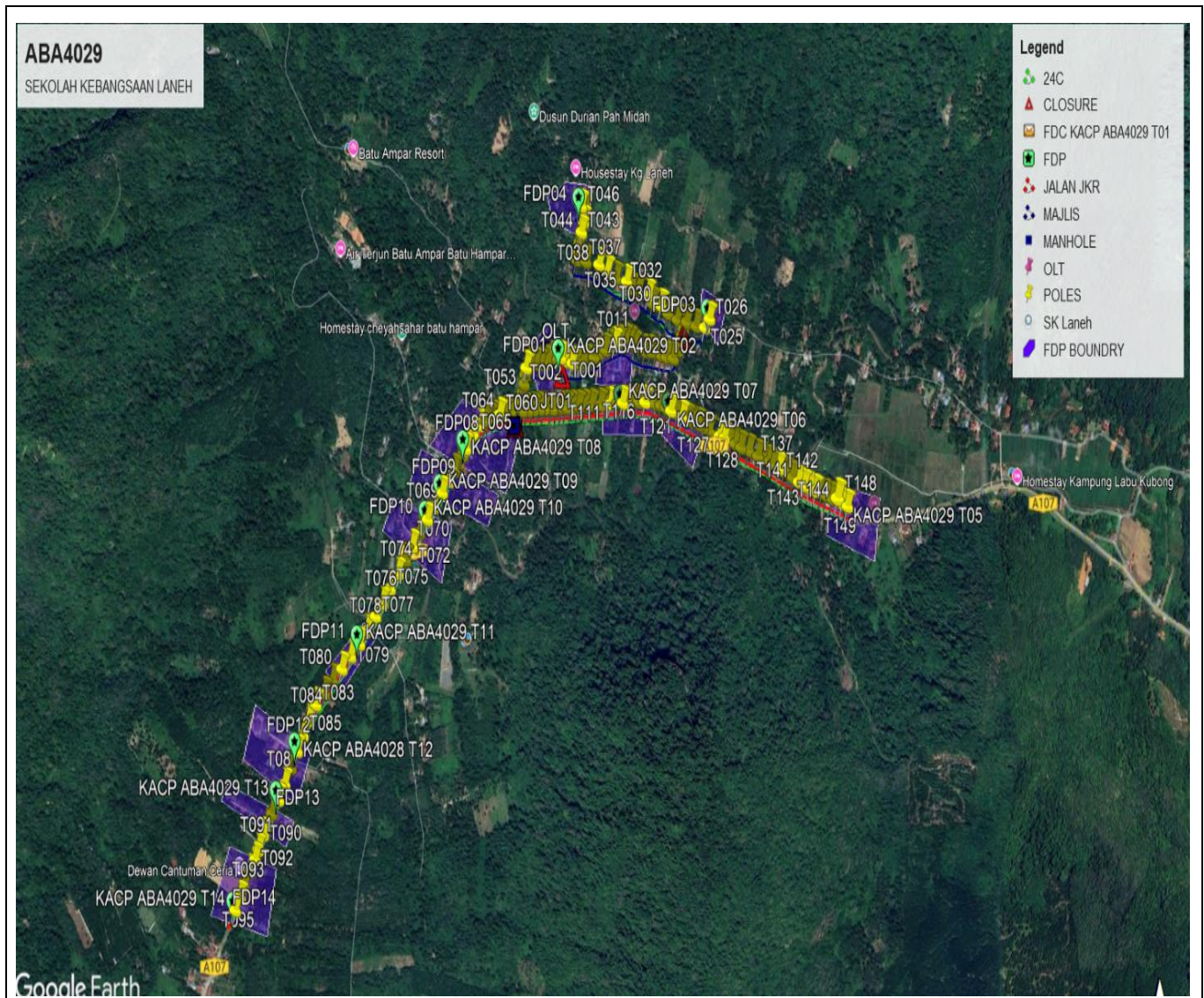
2.0 LOCAL AUTHORITY SUMMARY

Daerah Kuala Kangsar

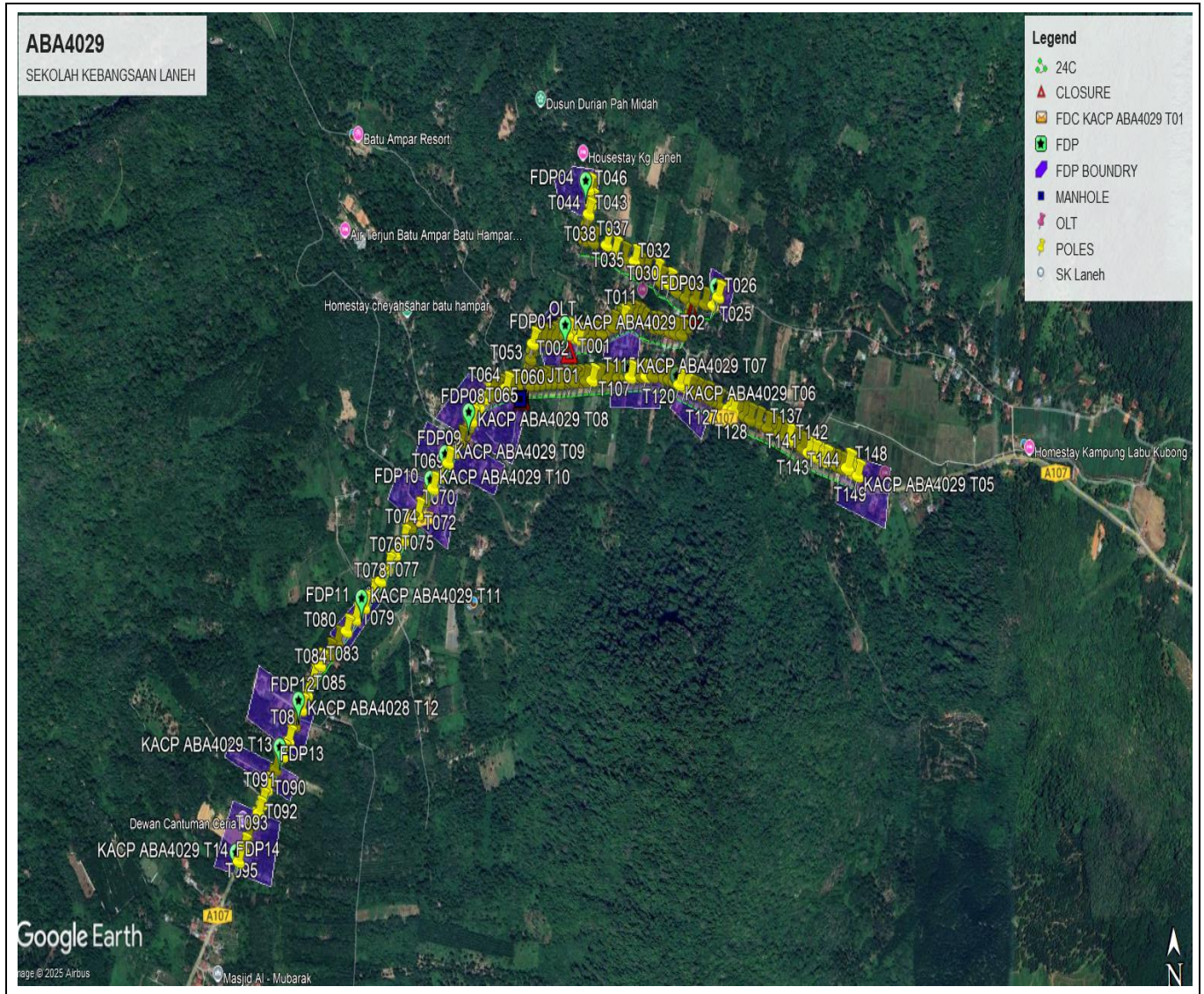
NO	ITEMS	OWNER	QUANTITY	DISTANCE (m)
1	HDD	JKR	1	12
		Majlis	-	-
		Estate / Private Land	-	-
2	New Pole	JKR	92	1833
		Majlis	57	3599
		Estate / Private Land	-	-
Total distance (m)				5444m

3.0 SITE PLAN- KMZ

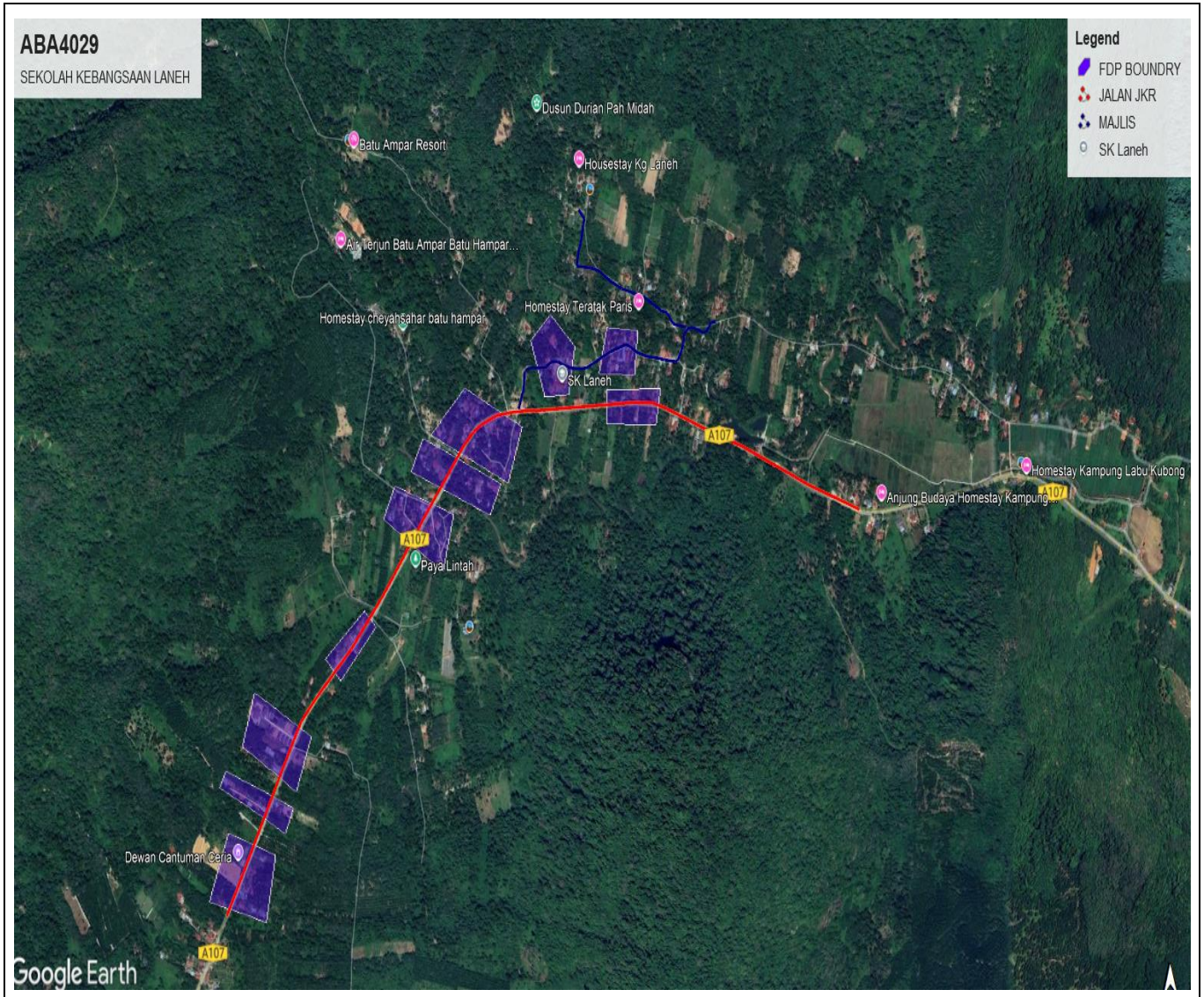
3.1 Overview Site Area



3.2 Site Boundry



3.3 Road Boundry



4.0 PROPOSED MANHOLE & HDD AND NEW POLE

No.	Pole & Manhole ID	Distance	Latitude	Longitude	Local Authority
1	FDC KACP ABA4029 T01		4.825045	100.859418	Majlis Perbandaran Kuala Kangsar
2	KACP ABA4029 T02	14	4.825005	100.859526	Majlis Perbandaran Kuala Kangsar
3	T001	20	4.824921	100.859677	Majlis Perbandaran Kuala Kangsar
4	T002	29	4.824866	100.859929	Majlis Perbandaran Kuala Kangsar
5	T003	25	4.824875	100.860154	Majlis Perbandaran Kuala Kangsar
6	T004	21	4.824865	100.860344	Majlis Perbandaran Kuala Kangsar
7	T005	23	4.824901	100.860533	Majlis Perbandaran Kuala Kangsar
8	T006	26	4.825000	100.860750	Majlis Perbandaran Kuala Kangsar
9	T007	25	4.825089	100.860948	Majlis Perbandaran Kuala Kangsar
10	T008	24	4.825161	100.861156	Majlis Perbandaran Kuala Kangsar
11	T009	23	4.825251	100.861345	Majlis Perbandaran Kuala Kangsar
12	T010	19	4.825309	100.861508	Majlis Perbandaran Kuala Kangsar
13	T011	21	4.825359	100.861688	Majlis Perbandaran Kuala Kangsar
14	T012	23	4.825403	100.861886	Majlis Perbandaran Kuala Kangsar
15	T013	18	4.825361	100.862042	Majlis Perbandaran Kuala Kangsar
16	T014	24	4.825242	100.862215	Majlis Perbandaran Kuala Kangsar
17	T015	46	4.825110	100.862600	Majlis Perbandaran Kuala Kangsar
18	T016	22	4.825099	100.862801	Majlis Perbandaran Kuala Kangsar
19	T017	23	4.825053	100.862996	Majlis Perbandaran Kuala Kangsar
20	T018	25	4.824992	100.863204	Majlis Perbandaran Kuala Kangsar
21	T019	21	4.824950	100.863385	Majlis Perbandaran Kuala Kangsar
22	T020	28	4.824916	100.863630	Majlis Perbandaran Kuala Kangsar
23	KACP ABA4029 T03	29	4.825109	100.863815	Majlis Perbandaran Kuala Kangsar
24	KACP ABA4029 T04	23	4.825307	100.863887	Majlis Perbandaran Kuala Kangsar
25	T021	18	4.825464	100.863953	Majlis Perbandaran Kuala Kangsar
26	T022	20	4.825623	100.864017	Majlis Perbandaran Kuala Kangsar
27	T023	21	4.825777	100.864139	Majlis Perbandaran Kuala Kangsar
28	T024	39	4.825677	100.864474	Majlis Perbandaran Kuala Kangsar
29	T025	36	4.825640	100.864793	Majlis Perbandaran Kuala Kangsar
30	T026	30	4.825849	100.864971	Majlis Perbandaran Kuala Kangsar
31	T027	4	4.825877	100.864998	Majlis Perbandaran Kuala Kangsar
32	T023		4.825777	100.864139	Majlis Perbandaran Kuala Kangsar
33	T028	41	4.825844	100.863799	Majlis Perbandaran Kuala Kangsar
34	T029	42	4.826003	100.863460	Majlis Perbandaran Kuala Kangsar
35	T030	35	4.826195	100.863214	Majlis Perbandaran Kuala Kangsar
36	T031	36	4.826258	100.862904	Majlis Perbandaran Kuala Kangsar
37	T032	29	4.826462	100.862749	Majlis Perbandaran Kuala Kangsar
38	T033	43	4.826575	100.862386	Majlis Perbandaran Kuala Kangsar
39	T034	32	4.826623	100.862111	Majlis Perbandaran Kuala Kangsar
40	T035	26	4.826798	100.861967	Majlis Perbandaran Kuala Kangsar
41	T036	46	4.826878	100.861578	Majlis Perbandaran Kuala Kangsar
42	T037	40	4.827037	100.861260	Majlis Perbandaran Kuala Kangsar
43	T038	40	4.827217	100.860966	Majlis Perbandaran Kuala Kangsar
44	T039	55	4.827295	100.860489	Majlis Perbandaran Kuala Kangsar
45	T040	40	4.827352	100.860142	Majlis Perbandaran Kuala Kangsar
46	T041	18	4.827519	100.860164	Majlis Perbandaran Kuala Kangsar
47	T042	28	4.827760	100.860252	Majlis Perbandaran Kuala Kangsar
48	T043	30	4.828012	100.860334	Majlis Perbandaran Kuala Kangsar

49	T044	32	4.828263	100.860415	Majlis Perbandaran Kuala Kangsar
50	T045	35	4.828558	100.860461	Majlis Perbandaran Kuala Kangsar
51	T046	15	4.828634	100.860340°	Majlis Perbandaran Kuala Kangsar
52	FDC KACP ABA4029 T01		4.825045	100.859418	Majlis Perbandaran Kuala Kangsar
53	T047	9	4.825035	100.859361	Majlis Perbandaran Kuala Kangsar
54	T048	19	4.825003	100.859202	Majlis Perbandaran Kuala Kangsar
55	T049	24	4.824894	100.859029	Majlis Perbandaran Kuala Kangsar
56	T050	30	4.824859	100.858770	Majlis Perbandaran Kuala Kangsar
57	T051	19	4.824868	100.858606	Majlis Perbandaran Kuala Kangsar
58	T052	25	4.824865	100.858394	Majlis Perbandaran Kuala Kangsar
59	T053	18	4.824779	100.858265	Majlis Perbandaran Kuala Kangsar
60	T054	22	4.824603	100.858222	Majlis Perbandaran Kuala Kangsar
61	T055	25	4.824391	100.858179	Majlis Perbandaran Kuala Kangsar
62	T056	26	4.824189	100.858117	Majlis Perbandaran Kuala Kangsar
63	T057	26	4.823986	100.858045	Majlis Perbandaran Kuala Kangsar
64	MANHOLE 1	16	4.823866	100.858007	JKR Kuala Kangsar
65	MANHOLE 2	13	4.823780	100.857934	JKR Kuala Kangsar
66	T058	29	4.823738	100.857685	JKR Kuala Kangsar
67	T059	25	4.823703	100.857467	JKR Kuala Kangsar
68	T060	21	4.823672	100.857278	JKR Kuala Kangsar
69	T061	22	4.823614	100.857102	JKR Kuala Kangsar
70	T062	24	4.823571	100.856912	JKR Kuala Kangsar
71	T063	16	4.823520	100.856779	JKR Kuala Kangsar
72	T064	27	4.823425	100.856564	JKR Kuala Kangsar
73	T065	37	4.823231	100.856307	JKR Kuala Kangsar
74	KACP ABA4029 T08	50	4.822881	100.856019	JKR Kuala Kangsar
75	T066	24	4.822727	100.855908	JKR Kuala Kangsar
76	T067	26	4.822543	100.855760	JKR Kuala Kangsar
77	T068	30	4.822361	100.855589	JKR Kuala Kangsar
78	T069	38	4.822104	100.855376	JKR Kuala Kangsar
79	KACP ABA4029 T09	43	4.821836	100.855139	JKR Kuala Kangsar
80	T070	48	4.821512	100.854870	JKR Kuala Kangsar
81	KACP ABA4029 T10	48	4.821205	100.854583	JKR Kuala Kangsar
82	T071	49	4.820894	100.854284	JKR Kuala Kangsar
83	T072	50	4.820573	100.854019	JKR Kuala Kangsar
84	T073	46	4.820247	100.853761	JKR Kuala Kangsar
85	T074	50	4.819922	100.853475	JKR Kuala Kangsar
86	T075	53	4.819572	100.853182	JKR Kuala Kangsar
87	T076	50	4.819222	100.852905	JKR Kuala Kangsar
88	T077	46	4.818908	100.852652	JKR Kuala Kangsar
89	T078	51	4.818585	100.852355	JKR Kuala Kangsar
90	KACP ABA4029 T11	50	4.818263	100.852069	JKR Kuala Kangsar
91	T079	52	4.817971	100.851745	JKR Kuala Kangsar
92	T080	51	4.817676	100.851420	JKR Kuala Kangsar
93	T081	51	4.817396	100.851077	JKR Kuala Kangsar
94	T082	51	4.817092	100.850763	JKR Kuala Kangsar
95	T083	46	4.816835	100.850451	JKR Kuala Kangsar
96	T084	52	4.816469	100.850187	JKR Kuala Kangsar
97	T085	46	4.816121	100.849992	JKR Kuala Kangsar
98	KACP ABA4028 T12	51	4.815742	100.849770	JKR Kuala Kangsar
99	T086	54	4.815344	100.849528	JKR Kuala Kangsar



**PROJEK PENYEDIAAN DAN PENYELENGGARAAN POINT OF PRESENCE (POP)
 FASA 2: HAB INFRASTRUKTUR GENTIAN OPTIK BERHAMPIRAN DENGAN
 SEKOLAH, KAWASAN PERINDUSTRIAN, PREMIS KERAJAAN DAN KOMUNITI
 SEKITARNYA OLEH KEMENTERIAN KOMUNIKASI MALAYSIA - ZON UTARA
 (KKMM.400-11/17/132(1))**



100	T087	52	4.814956	100.849294	JKR Kuala Kangsar
101	KACP ABA4029 T13	50	4.814580	100.849061	JKR Kuala Kangsar
102	T088	49	4.814246	100.848797	JKR Kuala Kangsar
103	T089	39	4.813958	100.848630	JKR Kuala Kangsar
104	T090	30	4.813750	100.848474	JKR Kuala Kangsar
105	T091	48	4.813388	100.848283	JKR Kuala Kangsar
106	T092	30	4.813155	100.848161	JKR Kuala Kangsar
107	T093	39	4.812877	100.847977	JKR Kuala Kangsar
108	T094	51	4.812491	100.847744	JKR Kuala Kangsar
109	T095	32	4.812252	100.847605	JKR Kuala Kangsar
110	KACP ABA4029 T14	42	4.811952	100.847422	JKR Kuala Kangsar
111	T096	20	4.823755	100.858094	JKR Kuala Kangsar
112	T097	22	4.823761	100.858295	JKR Kuala Kangsar
113	T098	23	4.823774	100.858495	JKR Kuala Kangsar
114	T099	26	4.823792	100.858714	JKR Kuala Kangsar
115	T100	23	4.823791	100.858903	JKR Kuala Kangsar
116	T101	32	4.823784	100.859184	JKR Kuala Kangsar
117	T102	23	4.823794	100.859379	JKR Kuala Kangsar
118	T103	19	4.823805	100.859551	JKR Kuala Kangsar
119	T104	18	4.823808	100.859704	JKR Kuala Kangsar
120	T105	24	4.823811	100.859917	JKR Kuala Kangsar
121	T106	26	4.823816	100.860147	JKR Kuala Kangsar
122	T107	25	4.823830	100.860378	JKR Kuala Kangsar
123	T108	29	4.823838	100.860635	JKR Kuala Kangsar
124	T109	34	4.823848	100.860945	JKR Kuala Kangsar
125	T110	25	4.823864	100.861166	JKR Kuala Kangsar
126	T111	18	4.823870	100.861318	JKR Kuala Kangsar
127	T112	29	4.823878	100.861576	JKR Kuala Kangsar
128	KACP ABA4029 T07	21	4.823882	100.861762	JKR Kuala Kangsar
129	T113	23	4.823885	100.861957	JKR Kuala Kangsar
130	T114	23	4.823886	100.862166	JKR Kuala Kangsar
131	T115	19	4.823890	100.862337	JKR Kuala Kangsar
132	T116	28	4.823884	100.862578	JKR Kuala Kangsar
133	T117	42	4.823834	100.862948	JKR Kuala Kangsar
134	T118	23	4.823790	100.863152	JKR Kuala Kangsar
135	T119	23	4.823728	100.863337	JKR Kuala Kangsar
136	KACP ABA4029 T06	22	4.823658	100.863519	JKR Kuala Kangsar
137	T120	27	4.823581	100.863739	JKR Kuala Kangsar
138	T121	24	4.823501	100.863932	JKR Kuala Kangsar
139	T122	24	4.823428	100.864130	JKR Kuala Kangsar
140	T123	25	4.823359	100.864327	JKR Kuala Kangsar
141	T124	25	4.823309	100.864547	JKR Kuala Kangsar
142	T125	18	4.823249	100.864692	JKR Kuala Kangsar
143	T126	27	4.823164	100.864914	JKR Kuala Kangsar
144	T127	46	4.823023	100.865287	JKR Kuala Kangsar
145	T128	30	4.822969	100.865457	JKR Kuala Kangsar
146	T129	26	4.822884	100.865660	JKR Kuala Kangsar
147	T130	24	4.822807	100.865857	JKR Kuala Kangsar
148	T131	24	4.822724	100.866050	JKR Kuala Kangsar
149	T132	36	4.822645	100.866345	JKR Kuala Kangsar
150	T133	40	4.822506	100.866668	JKR Kuala Kangsar
151	T134	25	4.822441	100.866873	JKR Kuala Kangsar

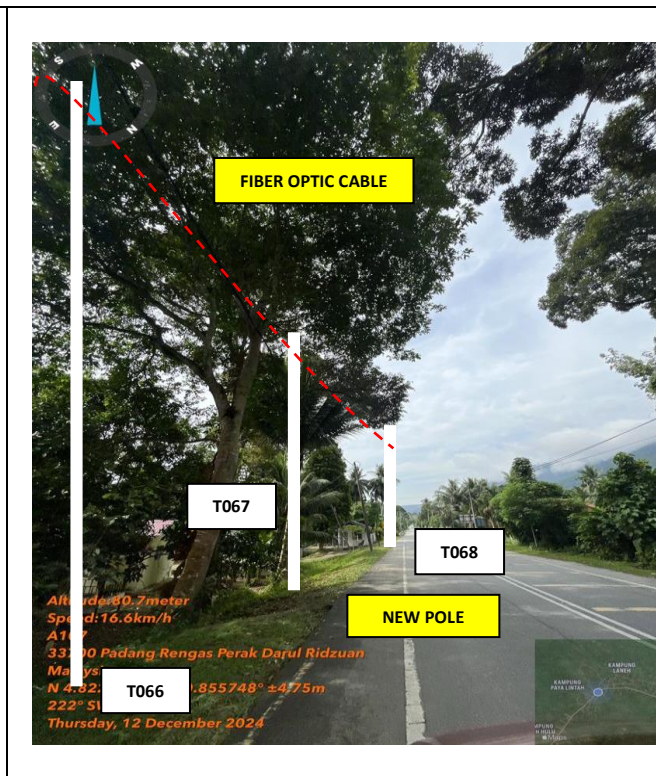
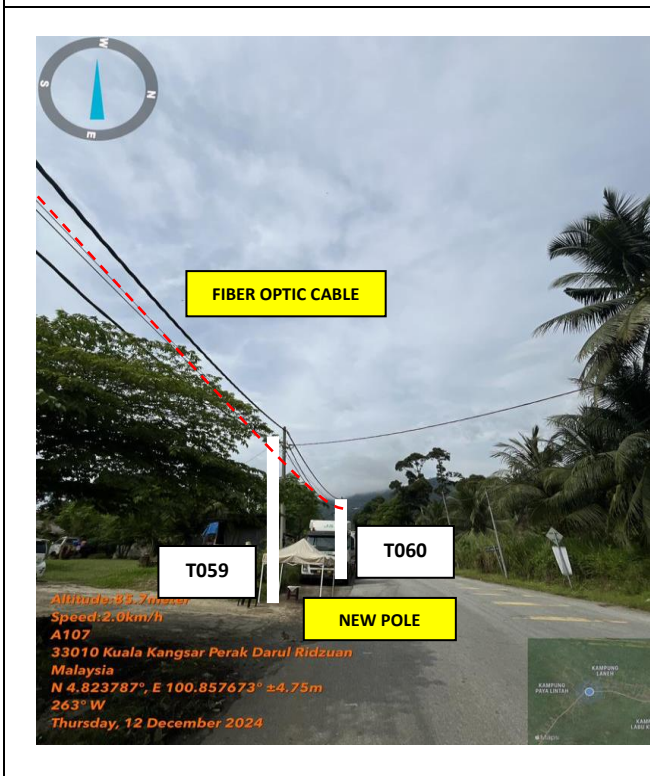
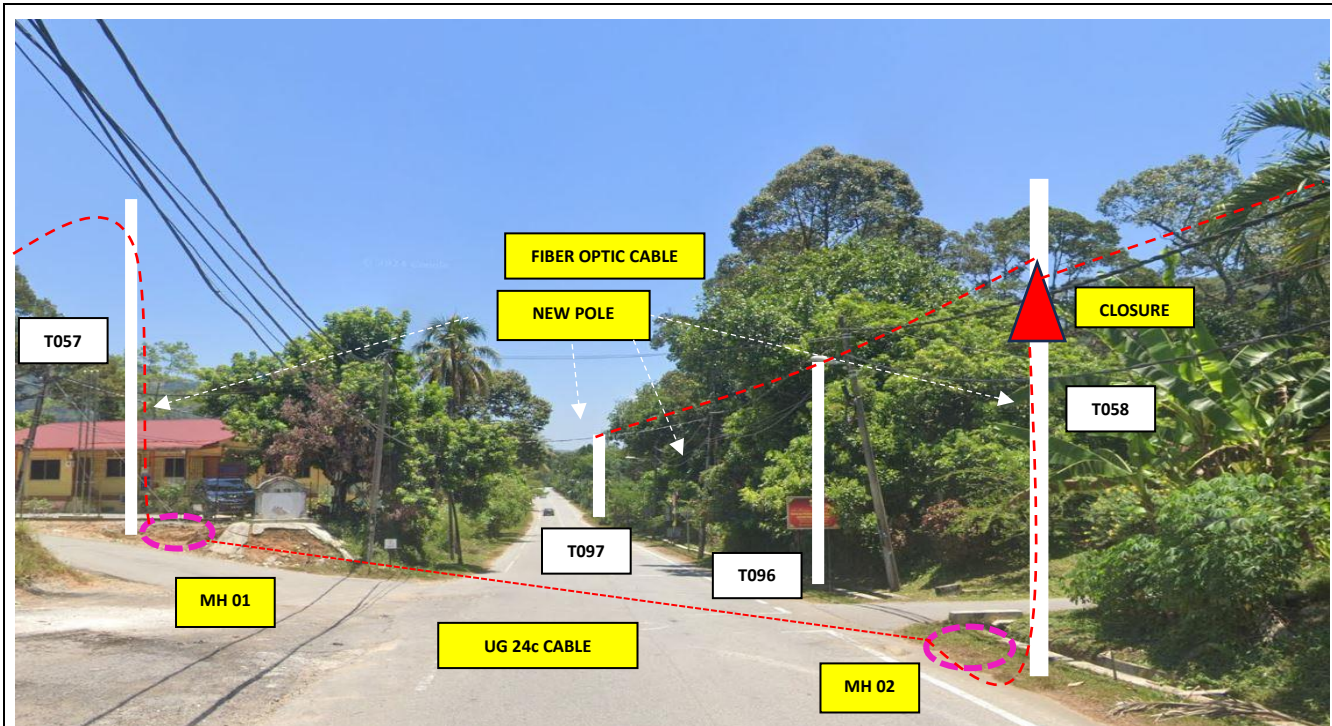


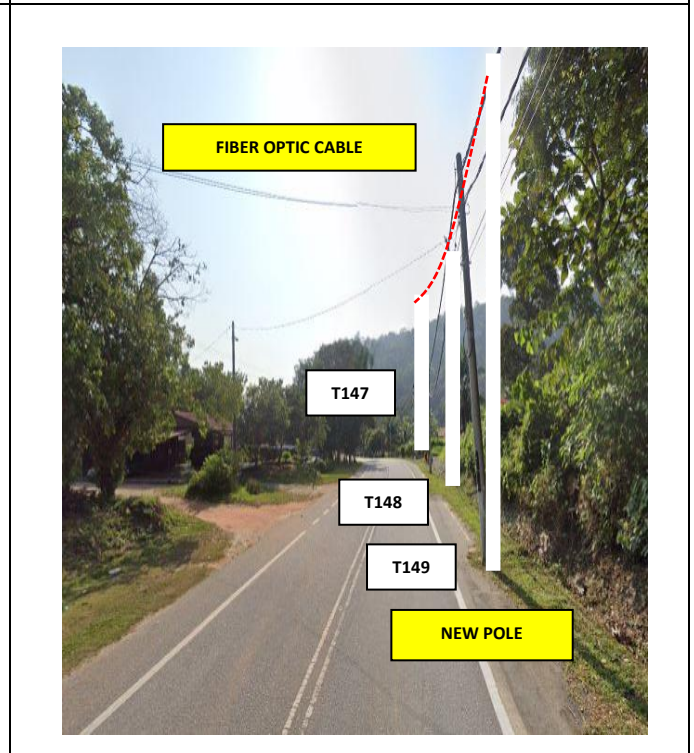
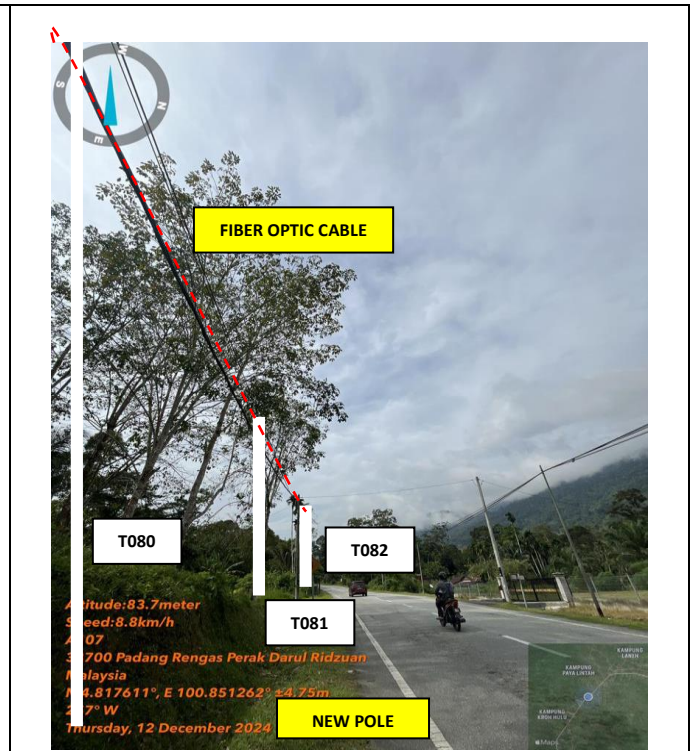
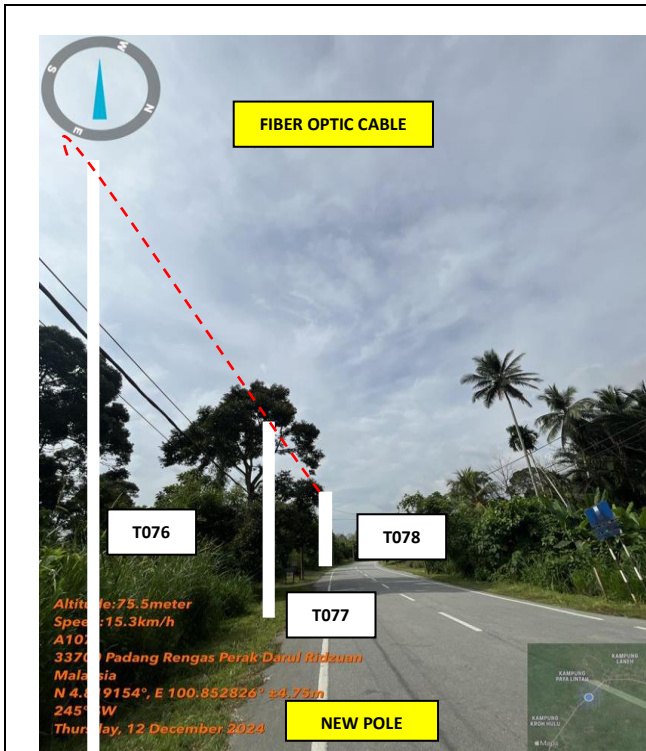
**PROJEK PENYEDIAAN DAN PENYELENGGARAAN POINT OF PRESENCE (POP)
 FASA 2: HAB INFRASTRUKTUR GENTIAN OPTIK BERHAMPIRAN DENGAN
 SEKOLAH, KAWASAN PERINDUSTRIAN, PREMIS KERAJAAN DAN KOMUNITI
 SEKITARNYA OLEH KEMENTERIAN KOMUNIKASI MALAYSIA - ZON UTARA
 (KKMM.400-11/17/132(1))**



152	T135	24	4.822358	100.867060	JKR Kuala Kangsar
153	T136	21	4.822289	100.867223	JKR Kuala Kangsar
154	T137	26	4.822196	100.867427	JKR Kuala Kangsar
155	T138	25	4.822109	100.867615	JKR Kuala Kangsar
156	T139	21	4.822047	100.867784	JKR Kuala Kangsar
157	T140	19	4.821970	100.867928	JKR Kuala Kangsar
158	T141	28	4.821859	100.868148	JKR Kuala Kangsar
159	T142	25	4.821773	100.868351	JKR Kuala Kangsar
160	T143	24	4.821698	100.868543	JKR Kuala Kangsar
161	T144	27	4.821628	100.868765	JKR Kuala Kangsar
162	T145	26	4.821561	100.868984	JKR Kuala Kangsar
163	T146	22	4.821506	100.869166	JKR Kuala Kangsar
164	T147	26	4.821429	100.869367	JKR Kuala Kangsar
165	T148	22	4.821378	100.869547	JKR Kuala Kangsar
166	T149	22	4.821310	100.869725	JKR Kuala Kangsar
167	KACP ABA4029 T05	25	4.821241	100.869927	JKR Kuala Kangsar

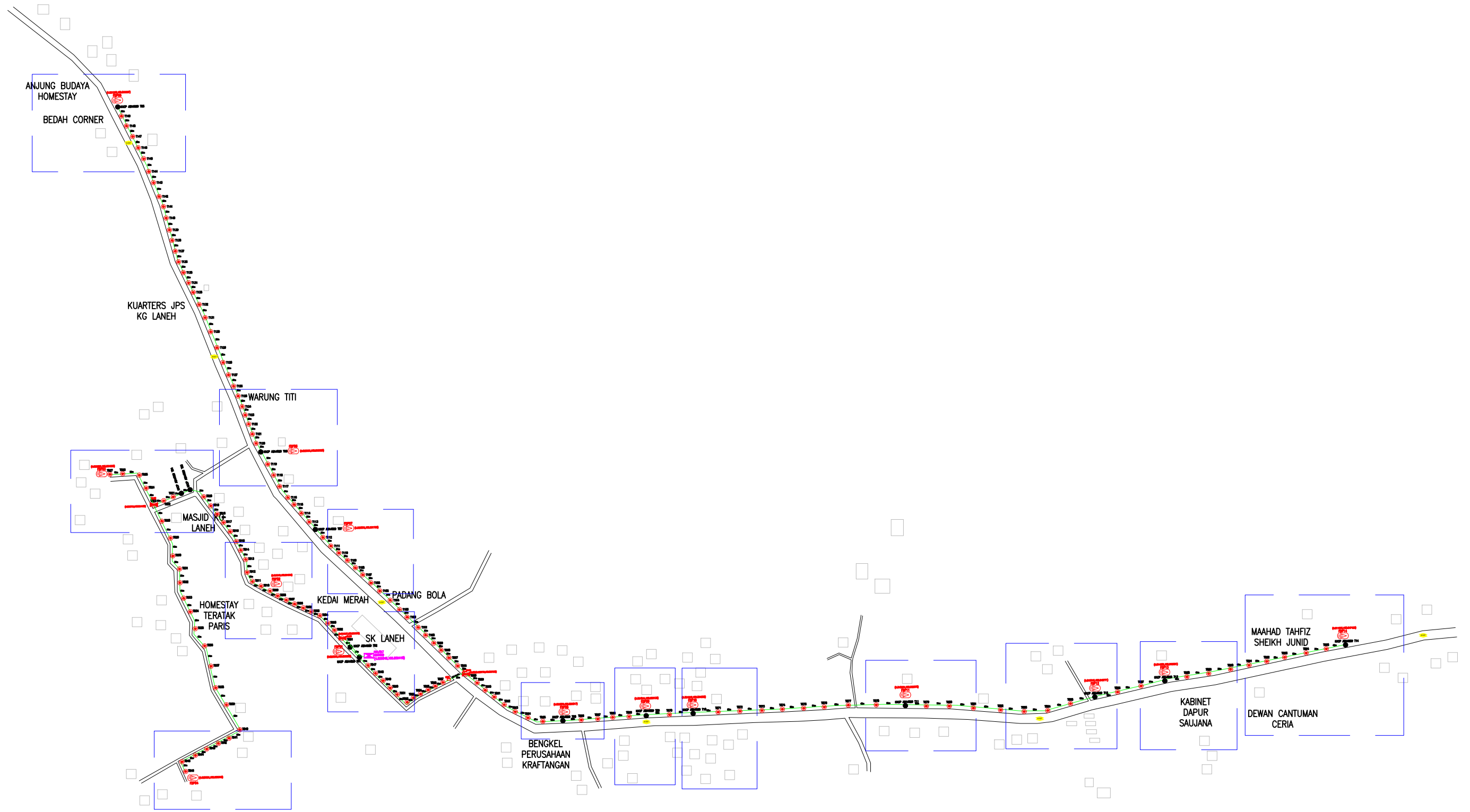
5.0 SITE PHOTO- PROPOSED NEW POLE





6.0 3rd PARTIES DEPENDENCIES

NO.	LOCAL COUNCIL/ AUTHORITY	REMARK
1	Majlis Perbandaran Kuala Kangsar	
2	JKR Kuala Kangsar	



12C FOC	Installed 1:4 / 1:8 / 1:32 splitter	Installed Pole (9m)	Suspension	New Manhole (PIT)	Micro-Trenching (Meter)	MH1	MH NO.
24C FOC	Installed Patch Cord	Installed Pole (7.5M)	Tension	New Manhole(JRC7)	Temporary Infra (Meter)	TKS-1	Existing TNB Pole NO.
48C FOC	FDC	Installed Pole (6.7M)	Pole Ring	FDP Boundary	Loop / Coil (Meter)	P001	New Pole NO.
96C FOC	Closure	Existing TNB Pole	FDP with (1:8) splitter	HDD (Meter)	Active Outdoor Cabinet	CL01	Closure NO.
144C FOC	Existing Closure	Installed Riser	Existing Manhole	Open Cut (Meter)	FDC NO.	DP1	FDP NO.

ACTUAL HOMEPASS : 120

KEY PLAN:



PROJECT TITLE:

ABA4029
SEKOLAH KEBANGSAAN
LANEH

DRAWING TITLE:

CONSTRUCTION DRAWING
ABA4029
SEKOLAH KEBANGSAAN LANEH

PROJECT PHASE:

Design By :	Date :	10/02/2025
Drawn By :	Scale :	NOT TO SCALE
Checked By :	Job Number :	
DRAWING NUMBER :	Sheet :	
ABA-4029-CD-01	1/1	
THIS PRINT AND ITS COPYRIGHT ARE THE PROPERTY OF ALLO TECHNOLOGY SDN BHD		Size : A3

