



PROJEK PENYEDIAAN DAN PENYELENGGARAAN POINT OF PRESENCE (POP)
 FASA 2: HAB INFRASTRUKTUR GENTIAN OPTIK BERHAMPIRAN DENGAN
 SEKOLAH, KAWASAN PERINDUSTRIAN, PREMIS KERAJAAN DAN KOMUNITI
 SEKITARNYA OLEH KEMENTERIAN KOMUNIKASI MALAYSIA - ZON UTARA
 (KKMM.400-11/17/132(1))



TECHNICAL PROPOSAL POP2 ABC0066 SJK(C) KUALA BIKAM (D-SIDE)

Company Name:	STEADCOM SDN BHD
Company Address:	11-3, Jalan Puteri 2/6, Bandar Puteri, 47100 Puchong, Selangor
Prepared By:	Fassya
Date:	17/12/2024

	
Point A	Point B

Starting Point

Site / Boundary Name	Sungkai
Address	SJK(C) KUALA BIKAM No. 1, Bidor, Perak
District	Bidor
Postcode	35500
State	Perak
GPS Coordinate	4.0227054, 101.2406854
LRD	A

End Point

Site / Boundary Name	Sungkai
Address	Bidor
District	Bidor
Postcode	35500
State	Perak
GPS Coordinate	4.022787, 101.243609
LRD	B



PROJEK PENYEDIAAN DAN PENYELENGGARAAN POINT OF PRESENCE (POP)
FASA 2: HAB INFRASTRUKTUR GENTIAN OPTIK BERHAMPIRAN DENGAN
SEKOLAH, KAWASAN PERINDUSTRIAN, PREMIS KERAJAAN DAN KOMUNITI
SEKITARNYA OLEH KEMENTERIAN KOMUNIKASI MALAYSIA - ZON UTARA
(KKMM.400-11/17/132(1))

STEADCOM
A member of OCK Group Berhad

1.0 Work Summary

No	Proposed Distance and Method	Unit	Qty
1	Horizontal Directional Drilling (HDD)	m	0
2	Carriage Way Open trench (CW)	m	0
3	Grass Verge Open Trenching (GV)	m	0
4	Micro trenching (MT)	m	0
	Total		

	Other Information	Unit	Qty
1	Proposed Manhole	EA	0
2	Proposed Pole	EA	50
3	Joint Closure	EA	0
4	Estimated time required for completion	days	0



PROJEK PENYEDIAAN DAN PENYELENGGARAAN POINT OF PRESENCE (POP)
 FASA 2: HAB INFRASTRUKTUR GENTIAN OPTIK BERHAMPIRAN DENGAN
 SEKOLAH, KAWASAN PERINDUSTRIAN, PREMIS KERAJAAN DAN KOMUNITI
 SEKITARNYA OLEH KEMENTERIAN KOMUNIKASI MALAYSIA - ZON UTARA
 (KKMM.400-11/17/132(1))



2.0 LOCAL AUTHORITY SUMMARY

Daerah Tapah

Bil	Items	Owner	Quantity	Distance
1	HDD	JKR	-	-
		Majlis	-	-
		Estate / Private Land	-	-
2	New Pole	JKR	-	-
		Majlis	50	1869m
		Estate / Private Land	-	-
3	Existing TNB Pole	JKR	-	-
		Majlis	-	-
		Estate / Private Land	-	-
Total				1869m

3.0 SITE PLAN KMZ (Overview site area)
3.1 Proposed FDP and Closure



3.2 Proposed New Pole



3.3 Site Plan KMZ Routing (All Local Authority)



Purple Colour – PBT Road

3.4 Site Plan – KMZ (All site Area)

i) Route 1

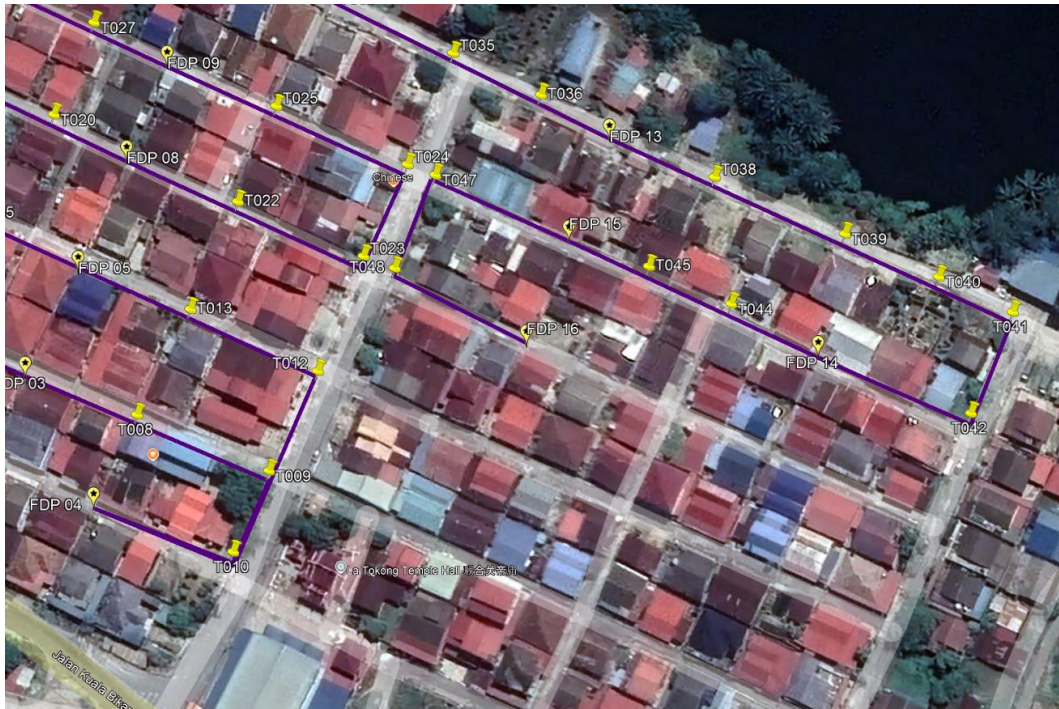




Route: 1.1

ii) Route 2





Route:2.1

3.5 Site Plan – KMZ Routing (Proposed New Pole)





PROJEK PENYEDIAAN DAN PENYELENGGARAAN POINT OF PRESENCE (POP)
 FASA 2: HAB INFRASTRUKTUR GENTIAN OPTIK BERHAMPIRAN DENGAN
 SEKOLAH, KAWASAN PERINDUSTRIAN, PREMIS KERAJAAN DAN KOMUNITI
 SEKITARNYA OLEH KEMENTERIAN KOMUNIKASI MALAYSIA - ZON UTARA
 (KKMM.400-11/17/132(1))



4.0 Proposed New Pole Lat & long Table

No.	Label	Pole & Manhole ID	Latitude	Longitude	Local Authority
1	FDC/OLT	T000	4.022661	101.2407069	MAJLIS DAERAH TAPAH
2	FDP 01	T001	4.022721	101.2405442	MAJLIS DAERAH TAPAH
3	FDP 02	T004	4.0230739	101.2412332	MAJLIS DAERAH TAPAH
4	FDP 03	T007	4.0226913	101.2420894	MAJLIS DAERAH TAPAH
5	FDP 04	T011	4.0222954	101.2422967	MAJLIS DAERAH TAPAH
6	FDP 05	T014	4.0230116	101.2422499	MAJLIS DAERAH TAPAH
7	FDP 06	T017	4.0234164	101.2413692	MAJLIS DAERAH TAPAH
8	FDP 07	T018	4.0237567	101.2415141	MAJLIS DAERAH TAPAH
9	FDP 08	T021	4.0233452	101.2423971	MAJLIS DAERAH TAPAH
10	FDP 09	T026	4.0236321	101.2425197	MAJLIS DAERAH TAPAH
11	FDP 10	T029	4.0240525	101.2416011	MAJLIS DAERAH TAPAH
12	FDP 11	T030	4.0243723	101.2418281	MAJLIS DAERAH TAPAH
13	FDP 12	T033	4.0239882	101.2426933	MAJLIS DAERAH TAPAH
14	FDP 13	T037	4.0234099	101.2438613	MAJLIS DAERAH TAPAH
15	FDP 14	T043	4.0227539	101.2444942	MAJLIS DAERAH TAPAH
16	FDP 15	T046	4.023104	101.2437382	MAJLIS DAERAH TAPAH
17	FDP 16	T049	4.0227872	101.2436095	MAJLIS DAERAH TAPAH



PROJEK PENYEDIAAN DAN PENYELENGGARAAN POINT OF PRESENCE (POP)
 FASA 2: HAB INFRASTRUKTUR GENTIAN OPTIK BERHAMPIRAN DENGAN
 SEKOLAH, KAWASAN PERINDUSTRIAN, PREMIS KERAJAAN DAN KOMUNITI
 SEKITARNYA OLEH KEMENTERIAN KOMUNIKASI MALAYSIA - ZON UTARA
 (KKMM.400-11/17/132(1))



4.1 Overall Pole (Proposed New Pole)

No.	Pole & Manhole ID	Distance	Latitude	Longitude	Local Authority
1	T000	0	4.022661	101.2407069	MAJLIS DAERAH TAPAH
2	T001	19	4.022721	101.2405442	MAJLIS DAERAH TAPAH
3	T002	33	4.0229956	101.2406575	MAJLIS DAERAH TAPAH
4	T003	38	4.0232323	101.240901	MAJLIS DAERAH TAPAH
5	T004	41	4.0230739	101.2412332	MAJLIS DAERAH TAPAH
6	T005	31	4.0229661	101.2414907	MAJLIS DAERAH TAPAH
7	T006	34	4.0228454	101.2417735	MAJLIS DAERAH TAPAH
8	T007	39	4.0226913	101.2420894	MAJLIS DAERAH TAPAH
9	T008	40	4.0225527	101.2424205	MAJLIS DAERAH TAPAH
10	T009	48	4.0223833	101.242821	MAJLIS DAERAH TAPAH
11	T010	30	4.0221377	101.2427119	MAJLIS DAERAH TAPAH
12	T011	49	4.0222954	101.2422967	MAJLIS DAERAH TAPAH
13	T012	37	4.022685	101.2429686	MAJLIS DAERAH TAPAH
14	T013	48	4.0228721	101.2425824	MAJLIS DAERAH TAPAH
15	T014	40	4.0230116	101.2422499	MAJLIS DAERAH TAPAH
16	T015	41	4.0231821	101.2419213	MAJLIS DAERAH TAPAH
17	T016	36	4.0233152	101.2416223	MAJLIS DAERAH TAPAH
18	T017	30	4.0234164	101.2413692	MAJLIS DAERAH TAPAH
19	T018	41	4.0237567	101.2415141	MAJLIS DAERAH TAPAH
20	T019	37	4.0236212	101.2418233	MAJLIS DAERAH TAPAH
21	T020	42	4.0234615	101.2421684	MAJLIS DAERAH TAPAH
22	T021	28	4.0233452	101.2423971	MAJLIS DAERAH TAPAH
23	T022	40	4.0231979	101.2427259	MAJLIS DAERAH TAPAH
24	T023	46	4.0230327	101.2431072	MAJLIS DAERAH TAPAH
25	T024	34	4.02331	101.2432409	MAJLIS DAERAH TAPAH
26	T025	48	4.0234873	101.2428429	MAJLIS DAERAH TAPAH
27	T026	39	4.0236321	101.2425197	MAJLIS DAERAH TAPAH
28	T027	28	4.0237404	101.2422899	MAJLIS DAERAH TAPAH
29	T028	46	4.0239177	101.2419146	MAJLIS DAERAH TAPAH
30	T029	38	4.0240525	101.2416011	MAJLIS DAERAH TAPAH
31	T030	43	4.0243723	101.2418281	MAJLIS DAERAH TAPAH
32	T031	38	4.0242639	101.2420913	MAJLIS DAERAH TAPAH
33	T032	43	4.0241075	101.2424437	MAJLIS DAERAH TAPAH
34	T033	31	4.0239882	101.2426933	MAJLIS DAERAH TAPAH
35	T034	40	4.0238297	101.2430181	MAJLIS DAERAH TAPAH
36	T035	45	4.0236474	101.2433792	MAJLIS DAERAH TAPAH
37	T036	33	4.0235211	101.2436454	MAJLIS DAERAH TAPAH
38	T037	27	4.0234099	101.2438613	MAJLIS DAERAH TAPAH
39	T038	38	4.0232722	101.244172	MAJLIS DAERAH TAPAH
40	T039	48	4.0231005	101.2445674	MAJLIS DAERAH TAPAH

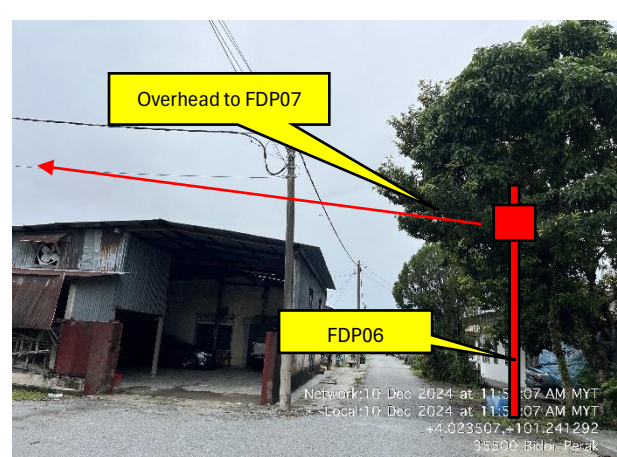
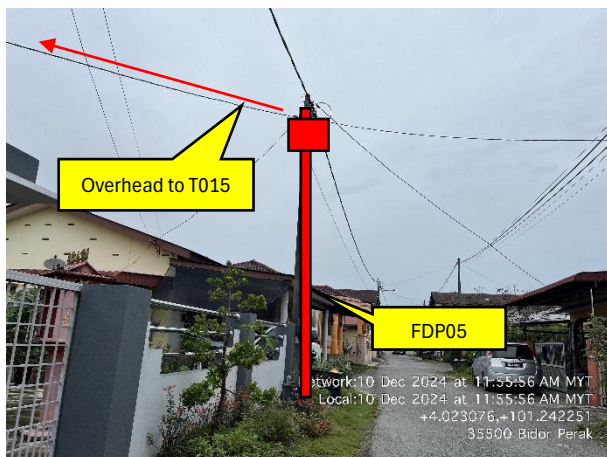
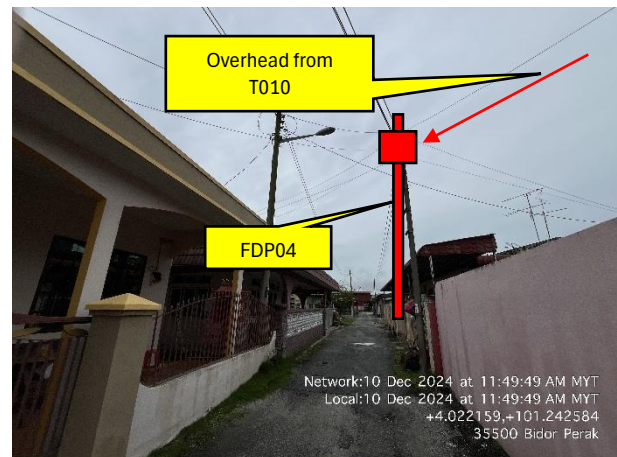
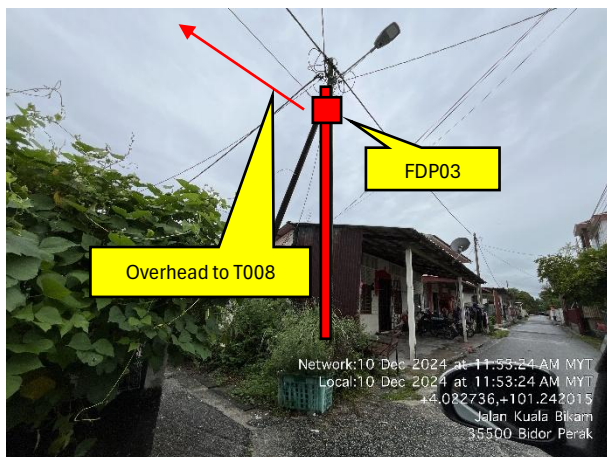
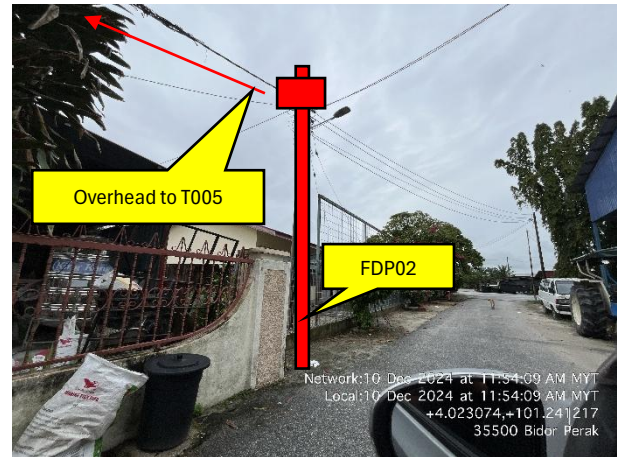
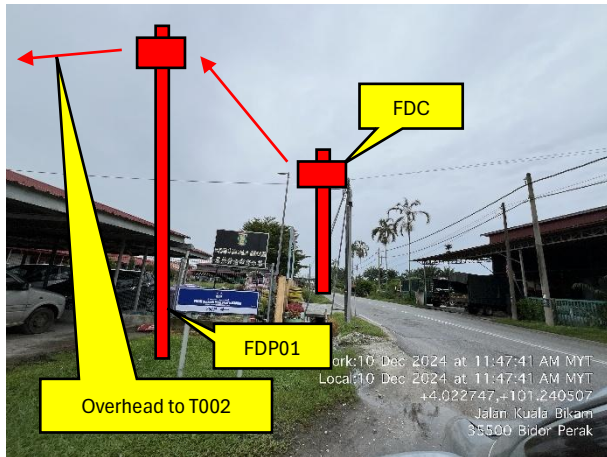


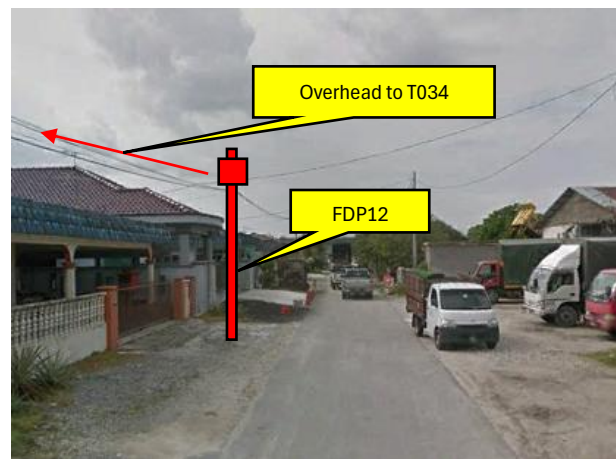
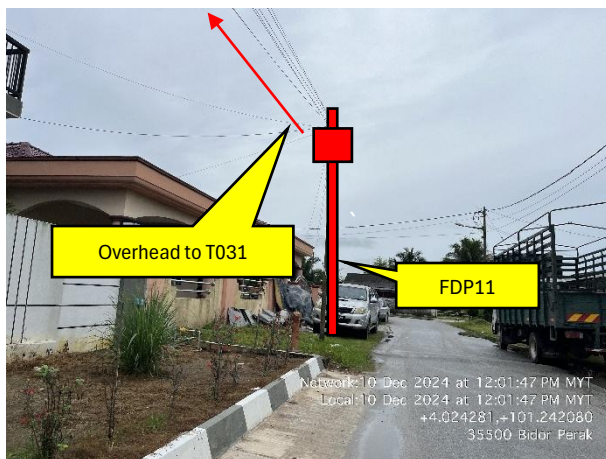
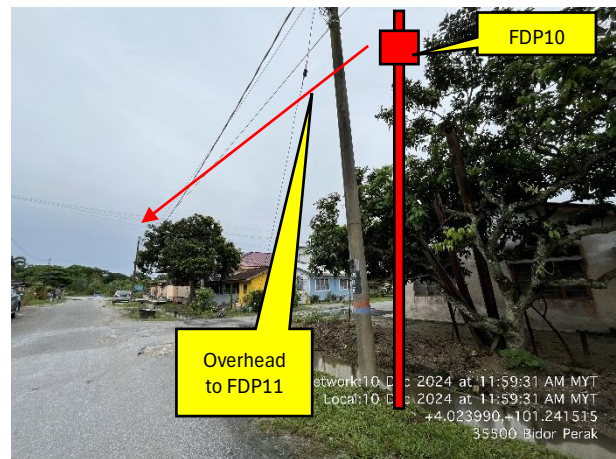
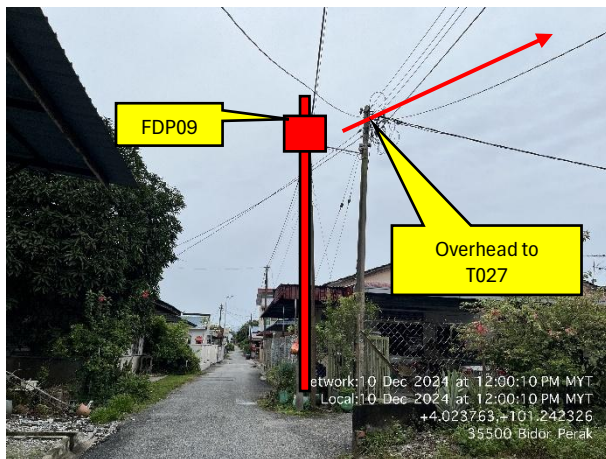
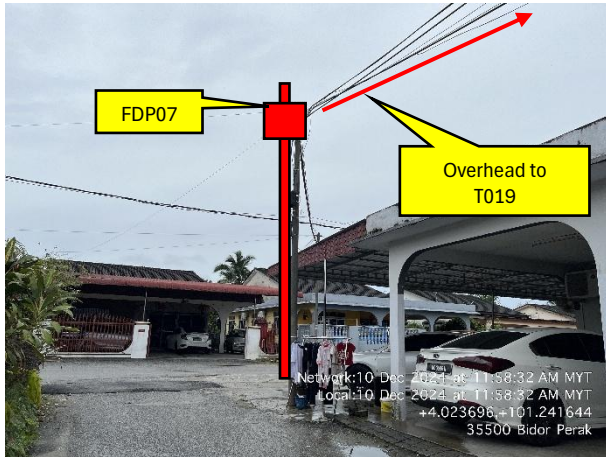
PROJEK PENYEDIAAN DAN PENYELENGGARAAN POINT OF PRESENCE (POP)
FASA 2: HAB INFRASTRUKTUR GENTIAN OPTIK BERHAMPIRAN DENGAN
SEKOLAH, KAWASAN PERINDUSTRIAN, PREMIS KERAJAAN DAN KOMUNITI
SEKITARNYA OLEH KEMENTERIAN KOMUNIKASI MALAYSIA - ZON UTARA
(KKMM.400-11/17/132(1))

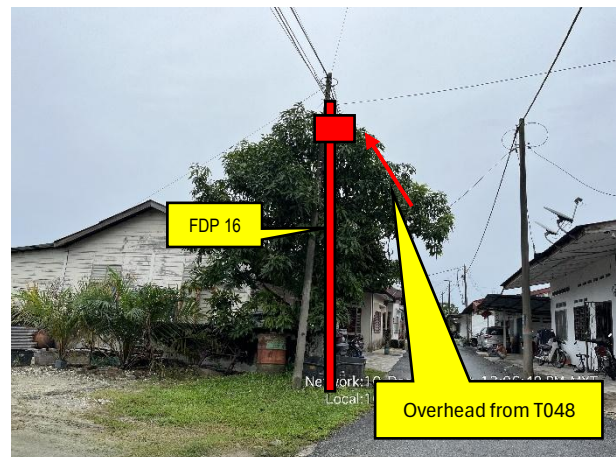
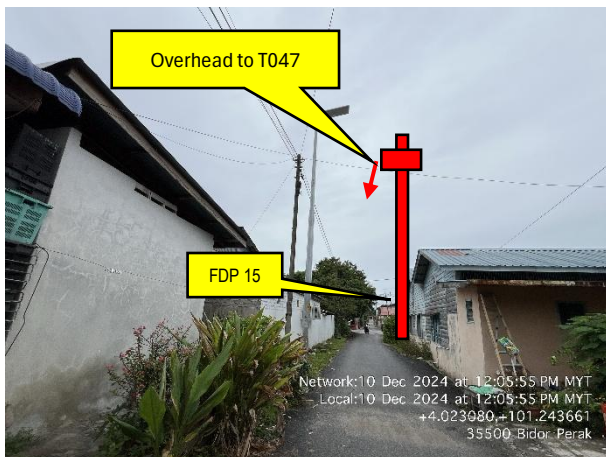
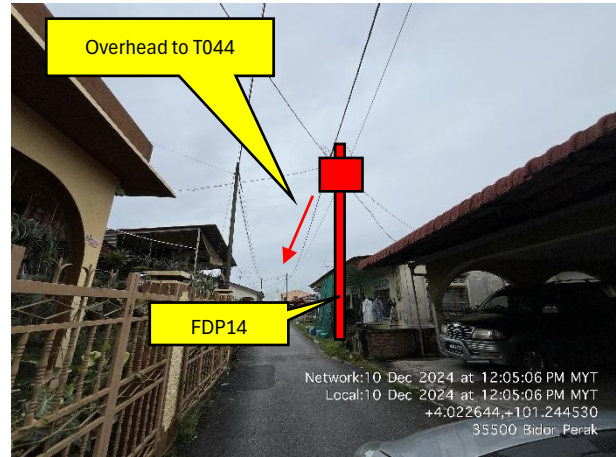
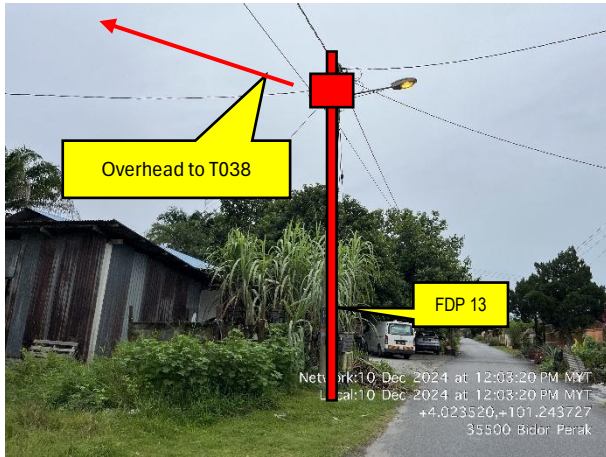
STEADCOM
A member of OCK Group Berhad

41	T040	35	4.0229704	101.2448521	MAJLIS DAERAH TAPAH
42	T041	28	4.0228635	101.2450759	MAJLIS DAERAH TAPAH
43	T042	37	4.0225573	101.2449493	MAJLIS DAERAH TAPAH
44	T043	55	4.0227539	101.2444942	MAJLIS DAERAH TAPAH
45	T044	34	4.0228885	101.2442223	MAJLIS DAERAH TAPAH
46	T045	30	4.0230022	101.243973	MAJLIS DAERAH TAPAH
47	T046	28	4.023104	101.2437382	MAJLIS DAERAH TAPAH
48	T047	50	4.0232788	101.2433251	MAJLIS DAERAH TAPAH
49	T048	34	4.0229966	101.243202	MAJLIS DAERAH TAPAH
50	T049	51	4.0227872	101.2436095	MAJLIS DAERAH TAPAH

5.0 SITE PHOTO – PROPOSED NEW POLE







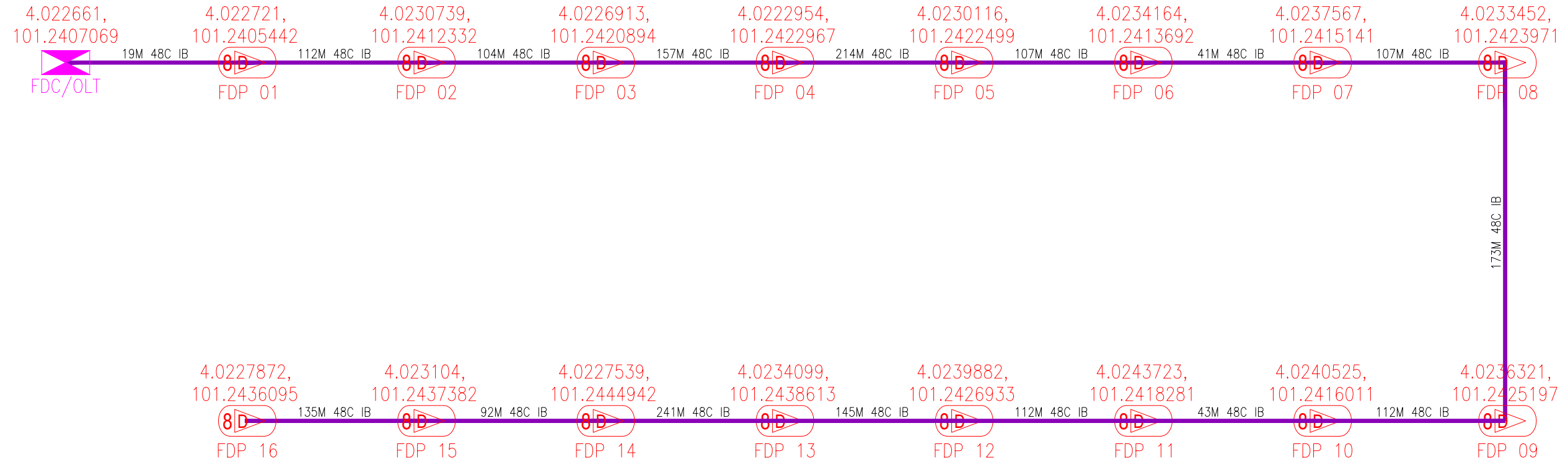


PROJEK PENYEDIAAN DAN PENYELENGGARAAN POINT OF PRESENCE (POP)
FASA 2: HAB INFRASTRUKTUR GENTIAN OPTIK BERHAMPIRAN DENGAN
SEKOLAH, KAWASAN PERINDUSTRIAN, PREMIS KERAJAAN DAN KOMUNITI
SEKITARNYA OLEH KEMENTERIAN KOMUNIKASI MALAYSIA - ZON UTARA
(KKMM.400-11/17/132(1))



6.0 3rd PARTIES DEPENDENCIES

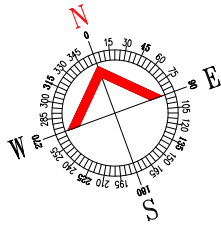
NO	LOCAL COUNCIL / AUTHORITY	REMARK
1	N/A	



LEGEND	NOS.	NOS.	NOS.	NOS.	NOS.	NOS.	NOS.				
	12C FOC	Installed 1:4 splitter in FDC		Installed Pole (9m)		New Manhole(JRC7)		Tension Small / Tension Big		MH NO.	
	24C FOC		FDP with (1:8) splitter		Installed Riser		House Number		Existing Manhole	TKS-1 Existing TNB Pole NO.	
	48C FOC		Closure		Suspension Big		Existing TNB Pole		Closure NO.	P001 New Pole NO.	
	96C FOC		New Manhole (PIT)		Suspension Small		LOOP		FDP NO.		SEE A-A in this page
	144C FOC		Installed Pole (7.5M)		FDC		FDP Boundary		FDC NO.		SEE SHEET XXX

KEY PLAN : POP2 PROJECT IN PERAK	MAIN CONTRACTOR 	SUB-CONTRACTOR : A member of FOCK Group Berhad	PROJECT TITLE : CONTRACTOR FOR SURVEY, TECHNICAL PROPOSAL AND WAYLEAVE, & PERMIT APPROVAL -POP2 PROJECT	DRAWING TITLE: SINGLE LINE DRAWING ABC0066 SEKOLAH JENIS KEBANGSAAN (CINA) KUALA BIKAM	Design By : FITRI Drawn By : FITRI Checked By : AMSYAR	Date : 17/12/2024 Scale : N.T.S Job Number : JOB_NUMBER
				PROJECT PHASE: POP2	DRAWING NUMBER : ABC0066-SLD-01	Sheet : 1/1 Size : A3

THIS PRINT AND ITS COPYRIGHT ARE THE PROPERTY OF ALLO TECHNOLOGY SDN BHD



LEGEND	NOS.	NOS.	NOS.	NOS.	NOS.	NOS.	NOS.	
12C FOC	Installed 1:4 splitter in FDC	Installed Pole (9m)	C7	New Manhole(JRC7)	TS / TB	Tension Small / Tension Big	MH1	MH NO.
24C FOC	FDP with (1:8) splitter	Installed Riser	#	House Number	Existing Manhole	TKS-1	Existing TNB Pole NO.	
48C FOC	Closure	Suspension Big	●	Existing TNB Pole	Closure NO.	C01	New Pole NO.	
96C FOC	New Manhole (PIT)	Suspension Small	○	LOOP	FDP NO.	FDP1		(A) SEE A-A in this page (A)
144C FOC	Installed Pole (7.5M)	FDC	⬮	FDP Boundary	FDC NO.	FDC		(A) SEE SHEET XXX (A)

ACTUAL HOMEPASS :

KEY PLAN : POP2 PROJECT IN PERAK	MAIN CONTRACTOR : 	SUB-CONTRACTOR : A member of FOCK Group Berhad	PROJECT TITLE : CONTRACTOR FOR SURVEY, TECHNICAL PROPOSAL AND WAYLEAVE, & PERMIT APPROVAL -POP2 PROJECT	DRAWING TITLE: CONSTRUCTION DRAWING ABC0066 SEKOLAH JENIS KEBANGSAAN (CINA) KUALA BIKAM PROJECT PHASE: POP2	Design By : FITRI	Date : 17/12/2024
					Drawn By : FITRI	Scale : N.T.S
					Checked By : AMSYAR	Job Number : JOB_NUMBER
					DRAWING NUMBER : ABC0066-CD-01	Sheet : INDEX
					THIS PRINT AND ITS COPYRIGHT ARE THE PROPERTY OF ALLO TECHNOLOGY SDN BHD	Size : A3