

## TECHNICAL PROPOSAL

### POP2 ABC2141 SEKOLAH JENIS KEBANGSAAN CINA KAMPONG TIMAH(D-SIDE)

|                 |   |  |
|-----------------|---|--|
| Company Name    | : | SEGALA DELIMA (M) SDN BHD  |
| Company Address | : | No. 8, Jalan Ampang Baru 6B, Pusat Perdagangan Baru, 31350 Ipoh, Perak |
| Prepared By     | : | Nasrohaizan Bin Mustaffa   |
| Date            | : | 27/11/2024   |



#### Starting Point

|                      |   |  |
|----------------------|---|--|
| Site / Boundary Name | : | Sekolah Jenis Kebangsaan (C) Kampong Timah |
| District             | : | Sekolah Jenis Kebangsaan (C) Kampong Timah |
| Postcode             | : | Tanjung Tualang                            |
| State                | : | 31800                                      |
| GPS Coordinate       | : | Perak                                      |
| LRD                  | : | 4.283948, 101.051605                       |

#### End Point

|                      |   |                       |
|----------------------|---|-----------------------|
| Site / Boundary Name | : | Kampong Timah         |
| Address              | : | Kampong Timah         |
| District             | : | Tanjung Tualang       |
| Postcode             | : | 31800                 |
| State                | : | Perak                 |
| GPS Coordinate       | : | 4.286789, 101.051378° |
| LRD                  | : | B                     |

## 1.0 WORK SUMMARY

| NO    | PROPOSED DISTANCE AND METHOD          | UNIT | QUANTITY |
|-------|---------------------------------------|------|----------|
| 1     | Horizontal Directional Drilling (HDD) | m    | 0        |
| 2     | Carriage Way Open Trench(CW)          | m    | 0        |
| 3     | Grass Verge Open Trenching (GV)       | m    | 0        |
| 4     | Micro Trenching (MT)                  | m    | 0        |
| Total |                                       |      | 0        |

| NO | OTHER INFORMATION  | UNIT | QUANTITY |
|----|--|------|----------|
| 1  | Installation of Short Span ADSS Fiber Cables                                     | m    | 1332     |
| 2  | Install New Pole   | ea   | 44       |
| 3  | Install New JRC7 Manhole   | ea   | 0        |
| 4  | Install GI Riser 100mm   | ea   | 0        |
| 5  | Install Fiber Distribution Point and Closure (Splicing, Termination and Testing) | ea   | 14       |
| 6  | Estimated Time Required for Completion   | days | 30       |

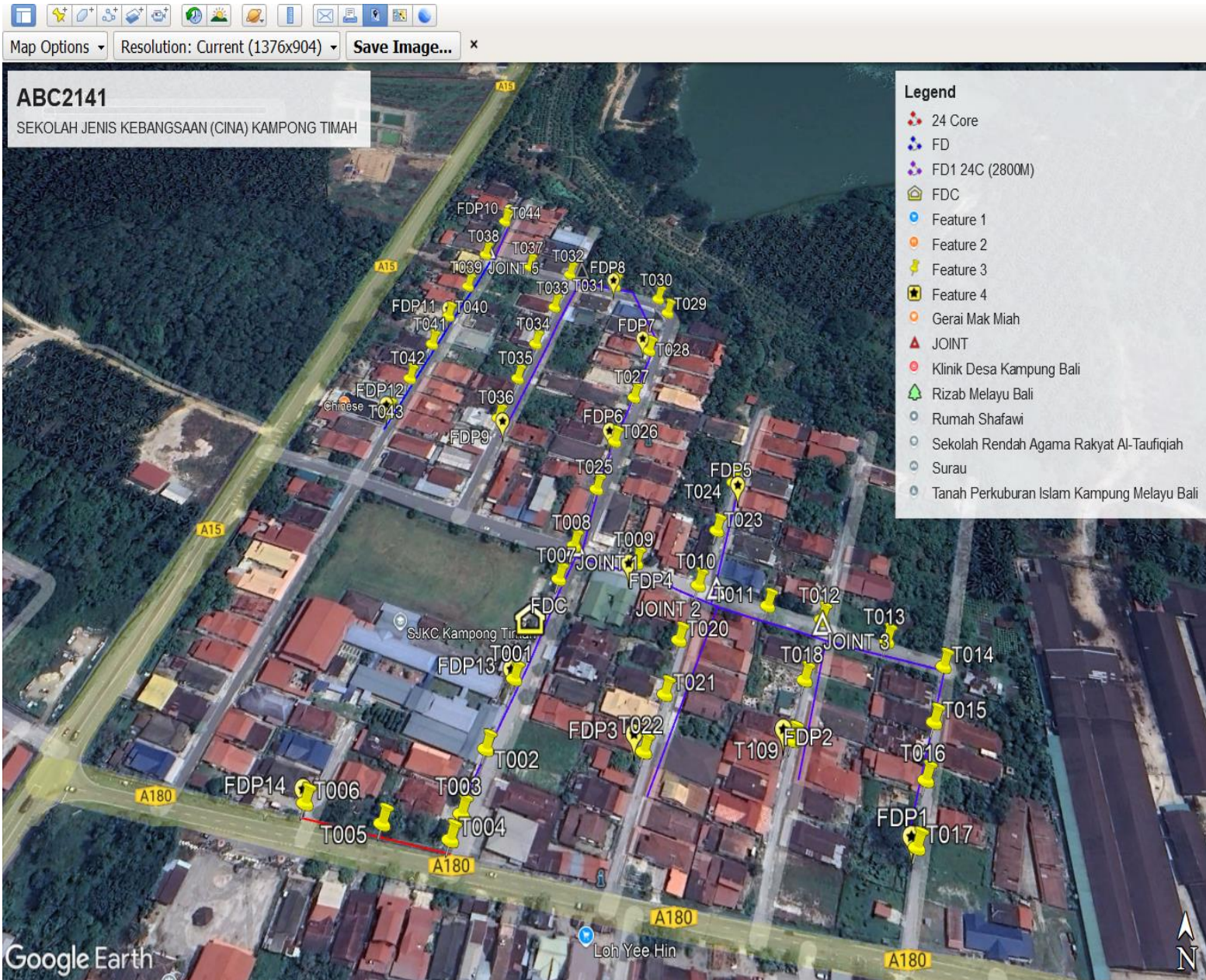
## 2.0 LOCAL AUTHORITY SUMMARY

Daerah Batu Gajah

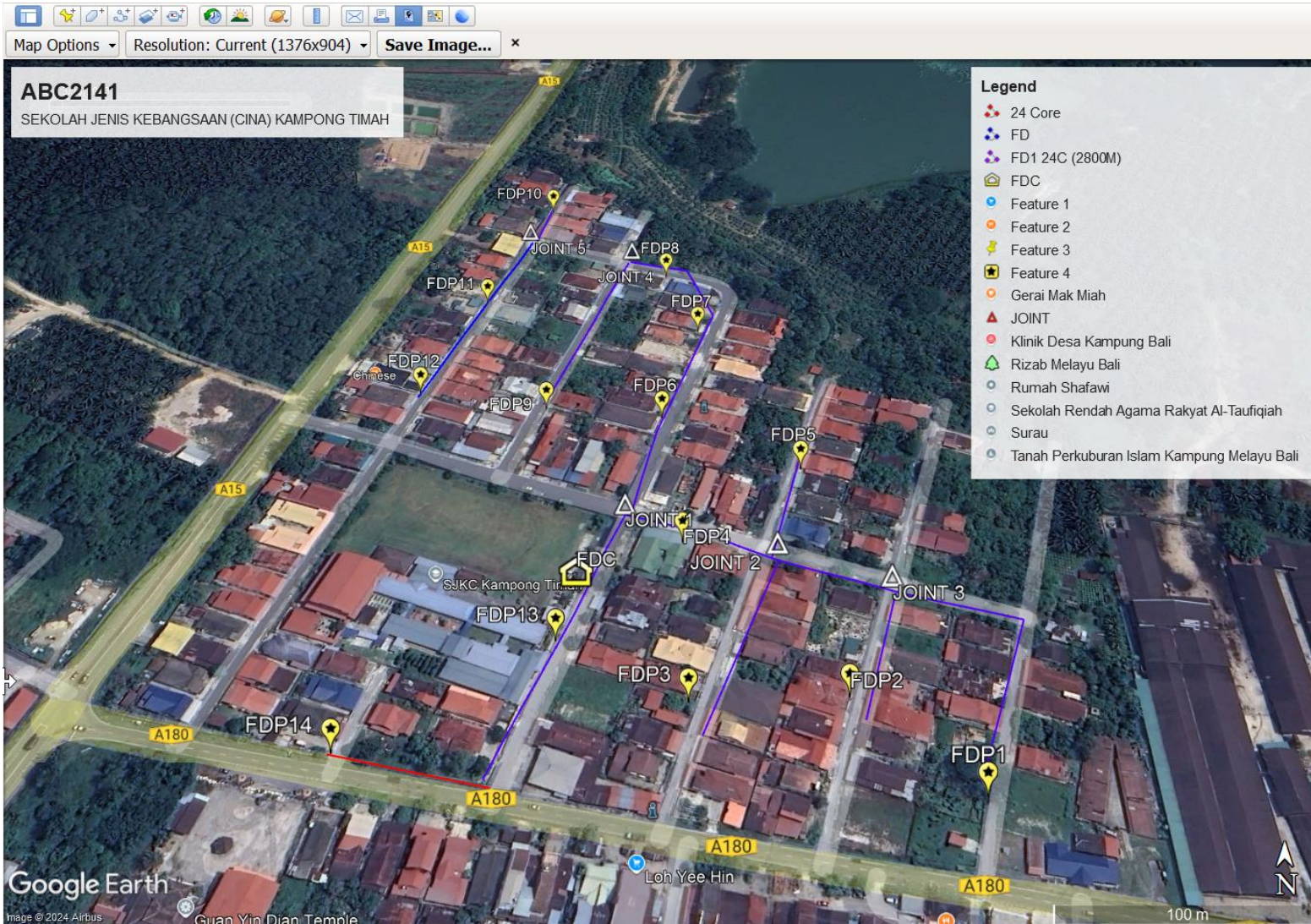
| NO                        | ITEMS    | Owner                 | Quantity | Distance (m) |
|---------------------------|----------|-----------------------|----------|--------------|
| 1                         | HDD      | JKR                   | -        | -            |
|                           |          | Majlis                | -        | -            |
|                           |          | Estate / Private Land | -        | -            |
| 2                         | New Pole | JKR                   | 3        | 70           |
|                           |          | Majlis                | 41       | 1262         |
|                           |          | Estate / Private Land | -        | -            |
| <b>Total Distance (m)</b> |          |                       |          | <b>1332</b>  |

### 3.0 SITE PLAN (KMZ)

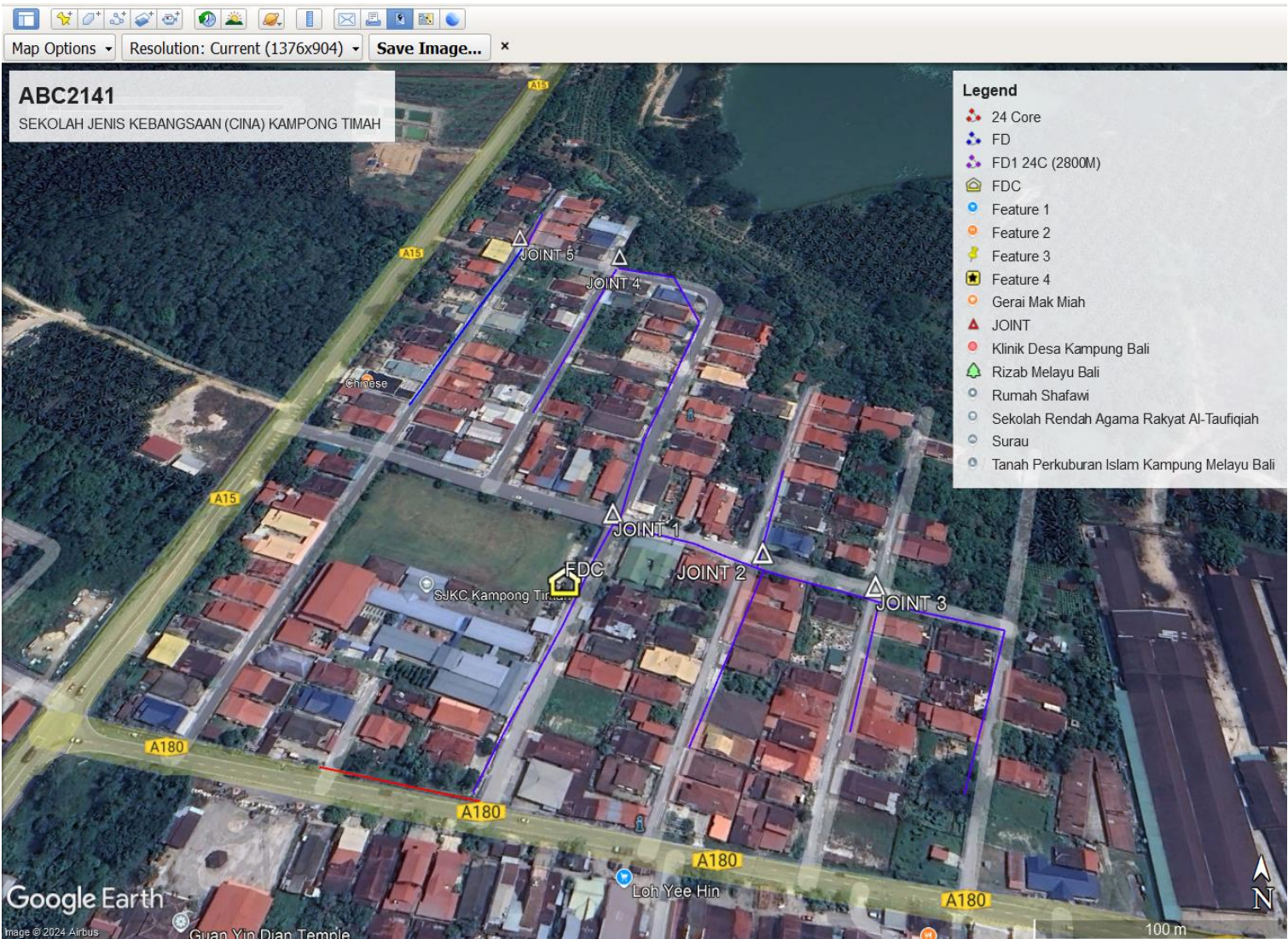
#### 3.1 Overview Site Area (Propose New Pole)



### 3.2 Proposed FDP and Closure



### 3.3 Site Plan - KMZ Routing (All Local Authority)



Red Colour – JKR Road  
Blue Colour - Majlis Road

### 3.0 PROPOSED NEW MANHOLE

| Proposed New Manhole Coordinate |                |              |          |           |                 |
|---------------------------------|----------------|--------------|----------|-----------|-----------------|
| No.                             | Manhole Number | Distance (m) | Latitude | Longitude | Local Authority |
| 1                               | MH01           | -            | -        | -         | -               |
| 2                               | MH02           | -            | -        | -         | -               |

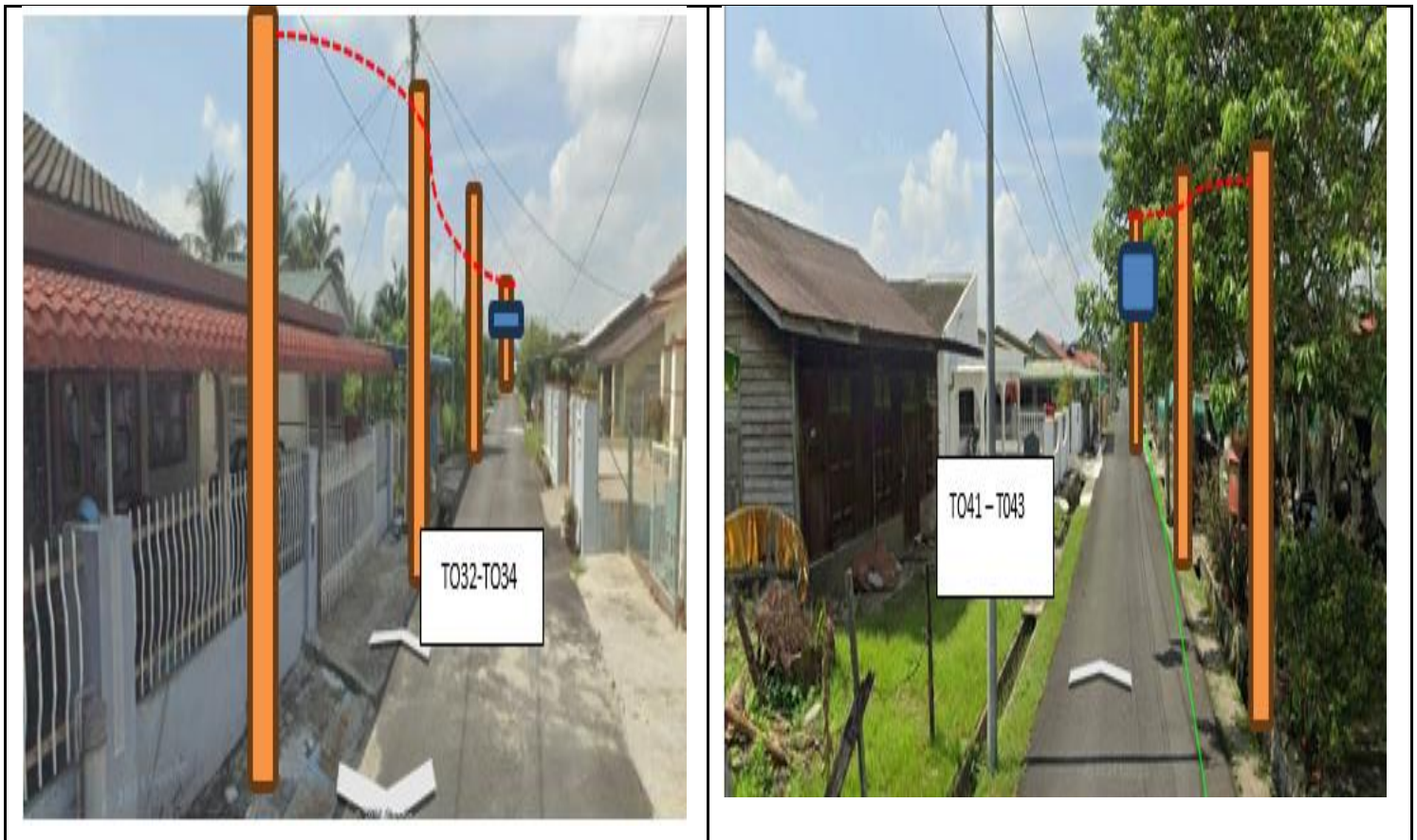
### 4.0 PROPOSED NEW POLE

| Proposed New Pole Coordinate |             |              |          |            |                          |
|------------------------------|-------------|--------------|----------|------------|--------------------------|
| No.                          | Pole Number | Distance (m) | Latitude | Longitude  | Local Authority          |
| 1                            | T001        | 35m          | 4.283948 | 101.051605 | Majlis Daerah Batu Gajah |
| 2                            | T002        | 35m          | 4.283648 | 101.051506 | Majlis Daerah Batu Gajah |
| 3                            | T003        | 35m          | 4.283401 | 101.051427 | Majlis Daerah Batu Gajah |
| 4                            | T004        | 35m          | 4.283304 | 101.051392 | JKR Daerah Kuala Lumpur  |
| 5                            | T005        | 35m          | 4.283366 | 101.051114 | JKR Daerah Kuala Lumpur  |
| 6                            | T006        | 35m          | 4.283441 | 101.050794 | JKR Daerah Kuala Lumpur  |
| 7                            | T007        | 35m          | 4.284424 | 101.051783 | Majlis Daerah Batu Gajah |
| 8                            | T008        | 35m          | 4.284600 | 101.051849 | Majlis Daerah Batu Gajah |
| 9                            | T009        | 35m          | 4.284499 | 101.052143 | Majlis Daerah Batu Gajah |
| 10                           | T010        | 35m          | 4.284393 | 101.052428 | Majlis Daerah Batu Gajah |
| 11                           | T011        | 35m          | 4.284292 | 101.052738 | Majlis Daerah Batu Gajah |
| 12                           | T012        | 35m          | 4.284229 | 101.052977 | Majlis Daerah Batu Gajah |
| 13                           | T013        | 35m          | 4.284124 | 101.053253 | Majlis Daerah Batu Gajah |
| 14                           | T014        | 35m          | 4.284003 | 101.053478 | Majlis Daerah Batu Gajah |
| 15                           | T015        | 35m          | 4.283756 | 101.053385 | Majlis Daerah Batu Gajah |
| 16                           | T016        | 35m          | 4.283528 | 101.053308 | Majlis Daerah Batu Gajah |
| 17                           | T017        | 35m          | 4.283274 | 101.053223 | Majlis Daerah Batu Gajah |
| 18                           | T018        | 35m          | 4.283947 | 101.052865 | Majlis Daerah Batu Gajah |
| 19                           | T019        | 35m          | 4.283689 | 101.052783 | Majlis Daerah Batu Gajah |
| 20                           | T020        | 35m          | 4.284127 | 101.052327 | Majlis Daerah Batu Gajah |
| 21                           | T021        | 35m          | 4.283881 | 101.052256 | Majlis Daerah Batu Gajah |
| 22                           | T022        | 35m          | 4.283639 | 101.052160 | Majlis Daerah Batu Gajah |
| 23                           | T023        | 35m          | 4.284673 | 101.052531 | Majlis Daerah Batu Gajah |
| 24                           | T024        | 35m          | 4.284942 | 101.052632 | Majlis Daerah Batu Gajah |
| 25                           | T025        | 35m          | 4.284901 | 101.051953 | Majlis Daerah Batu Gajah |
| 26                           | T026        | 35m          | 4.285193 | 101.052044 | Majlis Daerah Batu Gajah |
| 27                           | T027        | 35m          | 4.285477 | 101.052147 | Majlis Daerah Batu Gajah |
| 28                           | T028        | 35m          | 4.285799 | 101.052236 | Majlis Daerah Batu Gajah |

|    |      |     |          |            |                          |
|----|------|-----|----------|------------|--------------------------|
| 29 | T029 | 35m | 4.286077 | 101.052346 | Majlis Daerah Batu Gajah |
| 30 | T030 | 35m | 4.286180 | 101.052296 | Majlis Daerah Batu Gajah |
| 31 | T031 | 35m | 4.286280 | 101.052048 | Majlis Daerah Batu Gajah |
| 32 | T032 | 35m | 4.286374 | 101.051785 | Majlis Daerah Batu Gajah |
| 33 | T033 | 35m | 4.286110 | 101.051704 | Majlis Daerah Batu Gajah |
| 34 | T034 | 35m | 4.285853 | 101.051607 | Majlis Daerah Batu Gajah |
| 35 | T035 | 35m | 4.285607 | 101.051523 | Majlis Daerah Batu Gajah |
| 36 | T036 | 35m | 4.285337 | 101.051438 | Majlis Daerah Batu Gajah |
| 37 | T037 | 35m | 4.286421 | 101.051547 | Majlis Daerah Batu Gajah |
| 38 | T038 | 35m | 4.286518 | 101.051281 | Majlis Daerah Batu Gajah |
| 39 | T039 | 35m | 4.286269 | 101.051198 | Majlis Daerah Batu Gajah |
| 40 | T040 | 35m | 4.286044 | 101.051108 | Majlis Daerah Batu Gajah |
| 41 | T041 | 35m | 4.285839 | 101.051038 | Majlis Daerah Batu Gajah |
| 42 | T042 | 35m | 4.285600 | 101.050945 | Majlis Daerah Batu Gajah |
| 43 | T043 | 35m | 4.285374 | 101.050860 | Majlis Daerah Batu Gajah |
| 44 | T044 | 35m | 4.286789 | 101.051378 | Majlis Daerah Batu Gajah |

**5.0 SITE PHOTOS - PROPOSED HDD AND NEW MANHOLE (N/A)**

**6.0 SITE PHOTOS - PROPOSED NEW POLE**







| NO | LOCAL COUNCIL / AUTHORITY | REMARK |
|----|---------------------------|--------|
| 1  | Majlis Daerah Batu Gajah  | 1262m  |
| 2  | JKR Daerah Kinta          | 70m    |



