

TECHNICAL PROPOSAL

ABC4092 SEKOLAH JENIS KEBANGSAAN (CINA) LIMAN (D-SIDE)

Company Name : ARATIMUR SDN BHD
Company Address : A-08-13, 8th Floor, Block A, Radia Office, Persiaran Singgahsana, 40150 Bukit Jelutong, Shah Alam, Selangor
Prepared By : Khairul Tajuddin
Date : 24/01/2025



Starting Point

Site / Boundary Name : Sekolah Jenis Kebangsaan (Cina) Liman
Address : Kampung Ribu
District : Kuala Kangsar
Postcode : 33600
State : Perak
GPS Coordinate : 4.852173, 100.904417
LRD : A

End Point

Site / Boundary Name : Persiaran Liman 3
Address : Kampung Baru Liman Kati,
District : Kuala Kangsar
Postcode : 33600
State : Perak
GPS Coordinate : 4.847289, 100.903867
LRD : B



PROJEK PENYEDIAAN DAN PENYELENGGARAAN POINT OF PRESENCE (POP)
 FASA 2: HAB INFRASTRUKTUR GENTIAN OPTIK BERHAMPIRAN DENGAN
 SEKOLAH, KAWASAN PERINDUSTRIAN, PREMIS KERAJAAN DAN KOMUNITI
 SEKITARNYA OLEH KEMENTERIAN KOMUNIKASI MALAYSIA - ZON UTARA
 (KKMM.400-11/17/132(1))



1.0 WORK SUMMARY

NO	PROPOSED DISTANCE AND METHOD	UNIT	QUANTITY
1	Horizontal Directional Drilling (HDD)	m	0
2	Carriage Way Open Trench (CW)	m	0
3	Grass Verge Open Trenching (GV)	m	0
4	Micro Trenching (MT)	m	0
	Total		0

NO	OTHER INFORMATION	UNIT	QUANTITY
1	Installation of Short Span ADSS Fibre Cables	m	3260
2	Install New Pole	ea	67
3	Install New JRC7 Manhole	ea	0
4	Install GI Riser 100mm	ea	0
5	Install Fiber Distribution Point and Closure (Splicing, Termination and Testing	ea	20
6	Estimated Time Required For Completion	days	30

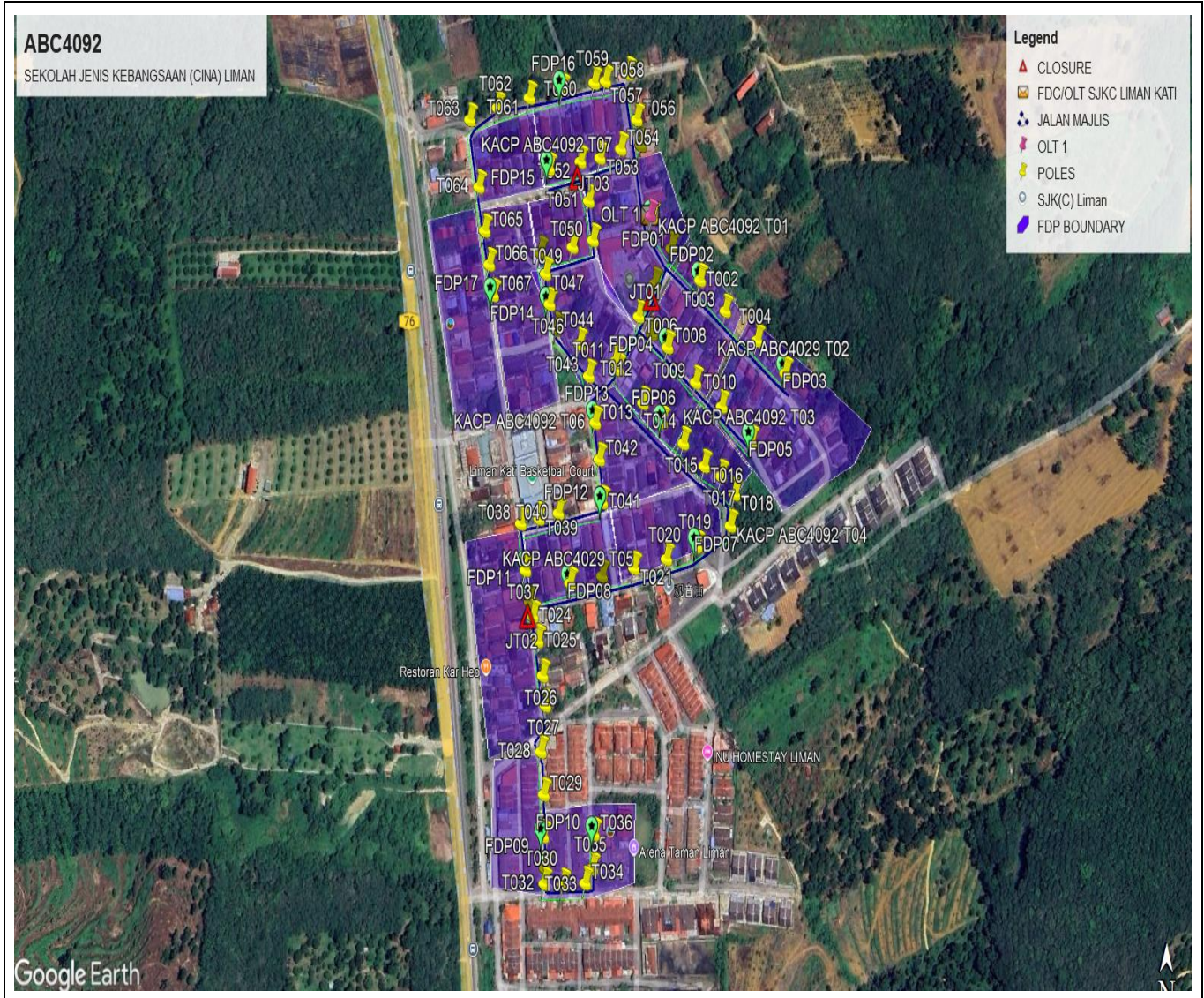
2.0 LOCAL AUTHORITY SUMMARY

Daerah Kuala Kangsar

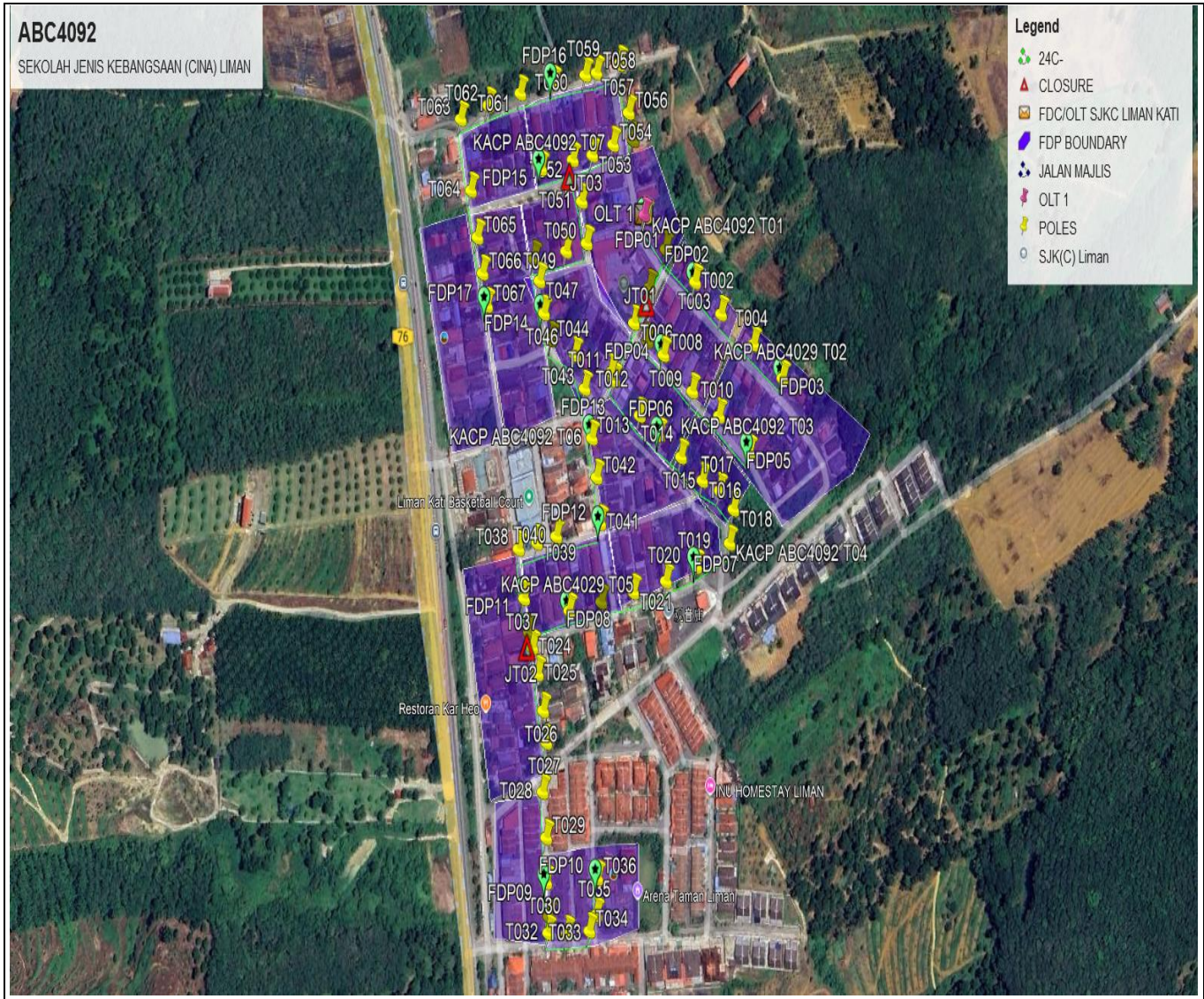
NO	ITEMS	OWNER	QUANTITY	DISTANCE (m)
1	HDD	JKR	-	-
		Majlis	-	-
		Estate / Private Land	-	-
2	New Pole	JKR		-
		Majlis	67	3260
		Estate / Private Land	-	-
Total distance (m)				3260m

3.0 SITE PLAN- KMZ

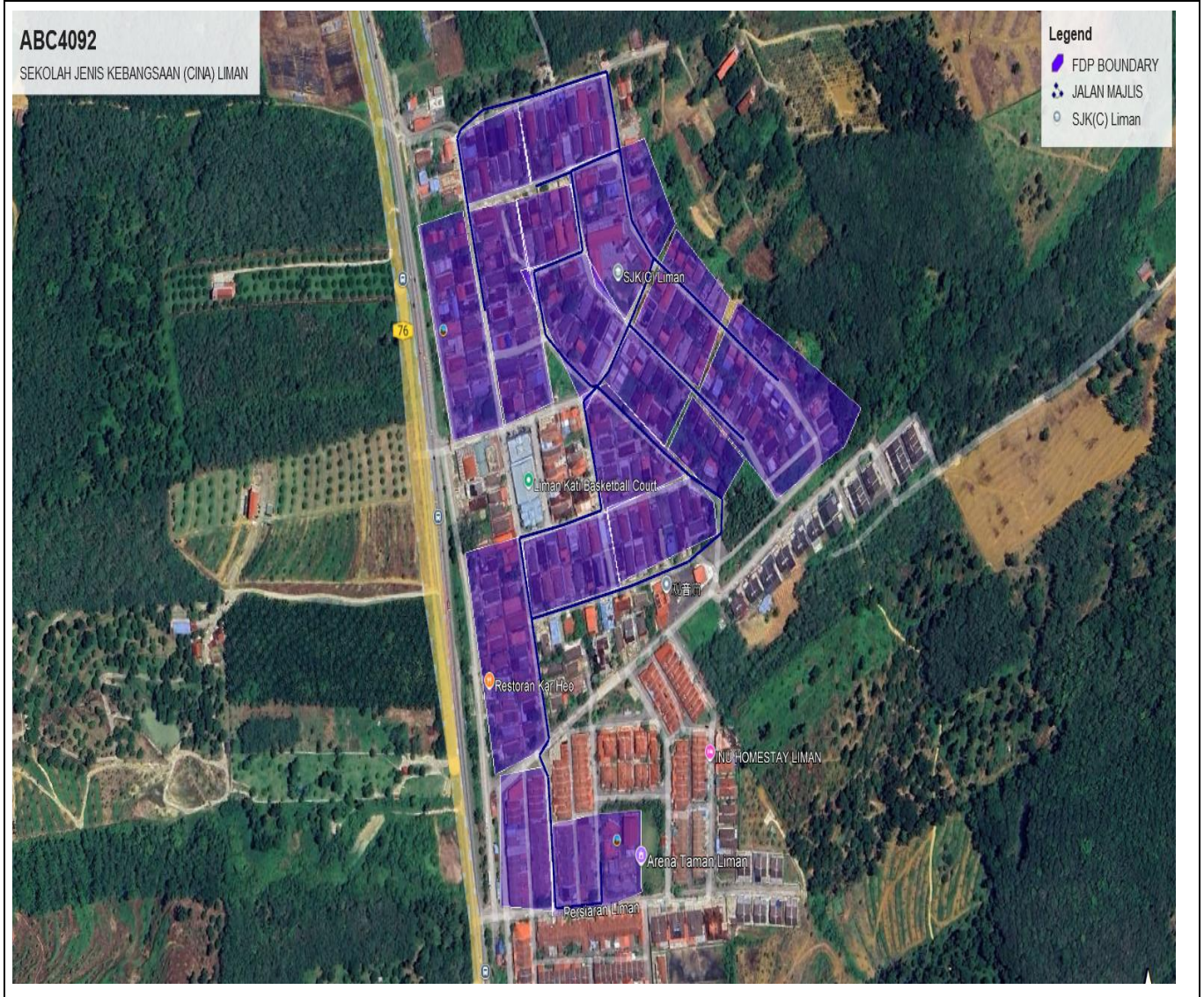
3.1 Overview Site Area



3.2 Site Boundry



3.3 Road Boundry



4.0 PROPOSED MANHOLE & HDD AND NEW POLE

No.	Pole & Manhole ID	Distance	Latitude	Longitude	Local Authority
1	FDC/OLT SJKC LIMAN KATI		4.852173	100.904417	Majlis Perbandaran Kuala Kangsar
2	T001	70	4.851925	100.904638	Majlis Perbandaran Kuala Kangsar
3	T002	35	4.851681	100.904976	Majlis Perbandaran Kuala Kangsar
4	T003	35	4.851445	100.905275	Majlis Perbandaran Kuala Kangsar
5	T004	35	4.851222	100.90565	Majlis Perbandaran Kuala Kangsar
6	KACP ABC4029 T02	35	4.850972	100.905978	Majlis Perbandaran Kuala Kangsar
7	T005	35	4.851636	100.904451	Majlis Perbandaran Kuala Kangsar
8	T006	70	4.851377	100.904274	Majlis Perbandaran Kuala Kangsar
9	T007	35	4.851242	100.904429	Majlis Perbandaran Kuala Kangsar
10	T008	35	4.851142	100.904613	Majlis Perbandaran Kuala Kangsar
11	T009	35	4.850873	100.904943	Majlis Perbandaran Kuala Kangsar
12	T010	35	4.850692	100.90525	Majlis Perbandaran Kuala Kangsar
13	KACP ABC4092 T03	35	4.850427	100.905601	Majlis Perbandaran Kuala Kangsar
14	T011	35	4.851019	100.90401	Majlis Perbandaran Kuala Kangsar
15	T012	35	4.850959	100.904045	Majlis Perbandaran Kuala Kangsar
16	T013	35	4.8507	100.904342	Majlis Perbandaran Kuala Kangsar
17	T014	35	4.850555	100.904566	Majlis Perbandaran Kuala Kangsar
18	T015	35	4.850394	100.904818	Majlis Perbandaran Kuala Kangsar
19	T016	35	4.850222	100.905066	Majlis Perbandaran Kuala Kangsar
20	T017	35	4.850149	100.905265	Majlis Perbandaran Kuala Kangsar
21	T018	35	4.850011	100.905428	Majlis Perbandaran Kuala Kangsar
22	KACP ABC4092 T04	35	4.849761	100.905385	Majlis Perbandaran Kuala Kangsar
23	T019	35	4.849588	100.904998	Majlis Perbandaran Kuala Kangsar
24	T020	35	4.84948	100.904648	Majlis Perbandaran Kuala Kangsar
25	T021	35	4.849399	100.904272	Majlis Perbandaran Kuala Kangsar
26	T022	35	4.849326	100.903901	Majlis Perbandaran Kuala Kangsar
27	KACP ABC4029 T05	35	4.849261	100.903532	Majlis Perbandaran Kuala Kangsar
28	T023	70	4.849101	100.903067	Majlis Perbandaran Kuala Kangsar
29	T024	35	4.848989	100.903107	Majlis Perbandaran Kuala Kangsar
30	T025	35	4.848796	100.903171	Majlis Perbandaran Kuala Kangsar
31	T026	35	4.848526	100.903233	Majlis Perbandaran Kuala Kangsar
32	T027	35	4.848293	100.903271	Majlis Perbandaran Kuala Kangsar
33	T028	35	4.847929	100.903228	Majlis Perbandaran Kuala Kangsar
34	T029	35	4.84759	100.903269	Majlis Perbandaran Kuala Kangsar
35	T030	35	4.847255	100.903271	Majlis Perbandaran Kuala Kangsar
36	T031	35	4.847001	100.903298	Majlis Perbandaran Kuala Kangsar
37	T032	35	4.846882	100.903293	Majlis Perbandaran Kuala Kangsar
38	T033	35	4.846879	100.903509	Majlis Perbandaran Kuala Kangsar
39	T034	35	4.846905	100.903769	Majlis Perbandaran Kuala Kangsar
40	T035	35	4.847022	100.903849	Majlis Perbandaran Kuala Kangsar
41	T036	35	4.847293	100.90386	Majlis Perbandaran Kuala Kangsar
42	T037	35	4.84935	100.903011	Majlis Perbandaran Kuala Kangsar
43	T038	35	4.849714	100.902948	Majlis Perbandaran Kuala Kangsar
44	T039	35	4.849759	100.90316	Majlis Perbandaran Kuala Kangsar
45	T040	35	4.849808	100.903382	Majlis Perbandaran Kuala Kangsar
46	T041	35	4.849907	100.90389	Majlis Perbandaran Kuala Kangsar
47	T042	35	4.850244	100.903845	Majlis Perbandaran Kuala Kangsar
48	KACP ABC4092 T06	35	4.850533	100.90379	Majlis Perbandaran Kuala Kangsar
49	T043	35	4.850898	100.903706	Majlis Perbandaran Kuala Kangsar
50	T044	35	4.851147	100.903594	Majlis Perbandaran Kuala Kangsar
51	T045	35	4.85126	100.903319	Majlis Perbandaran Kuala Kangsar

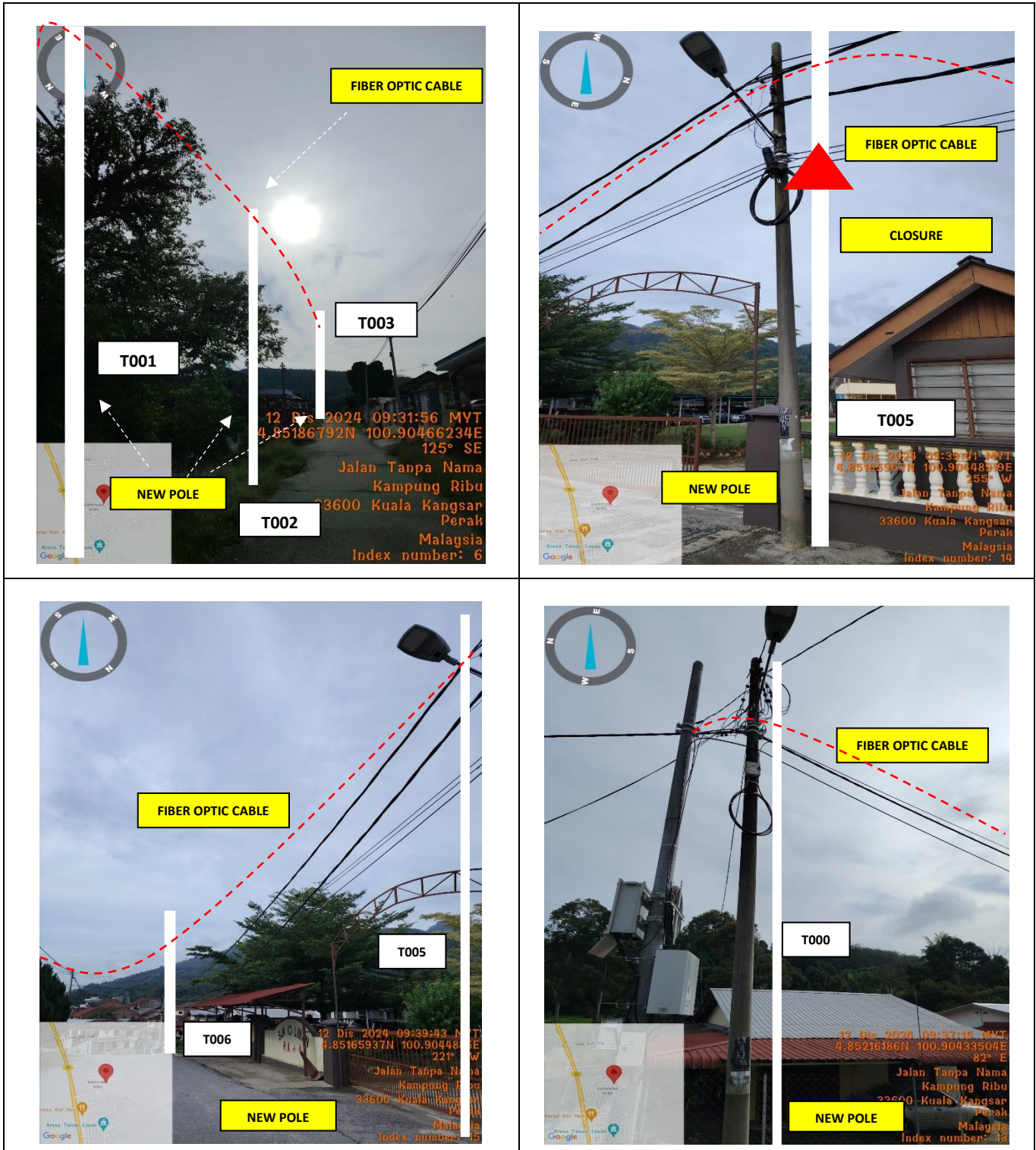


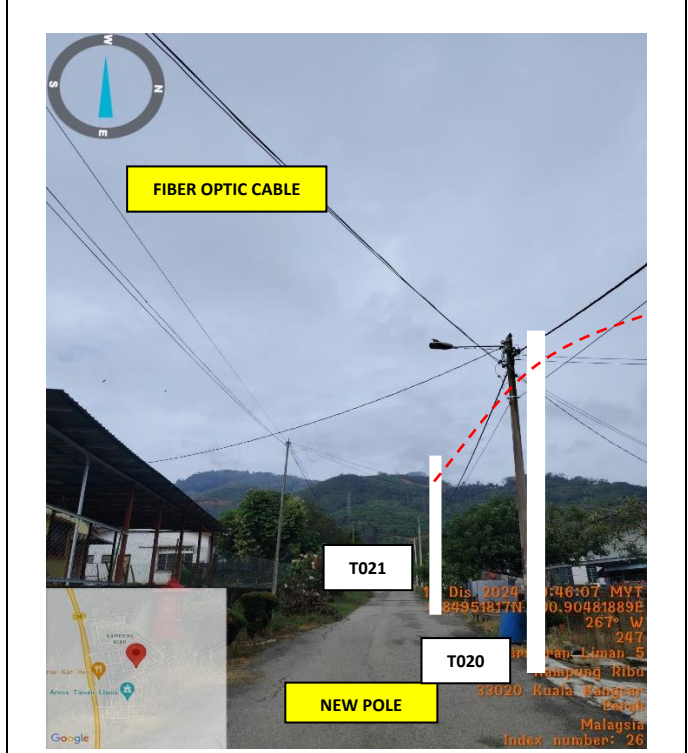
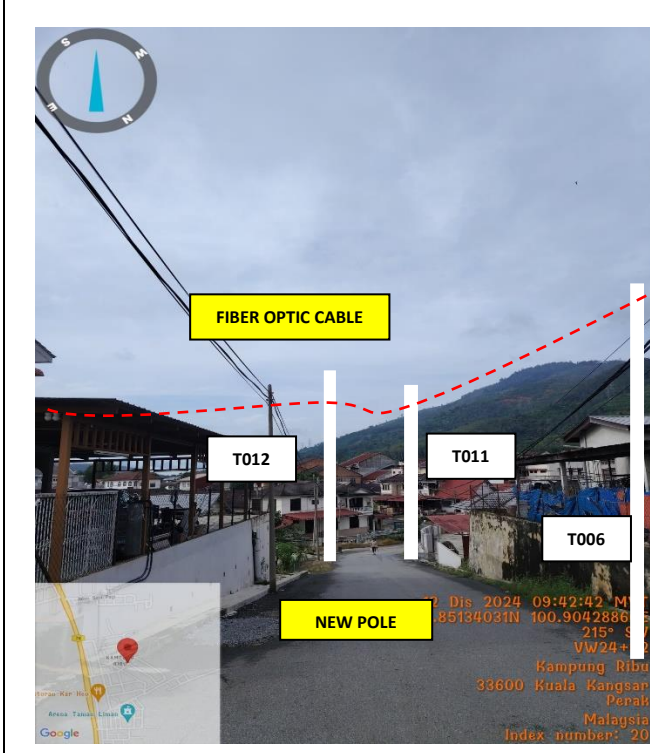
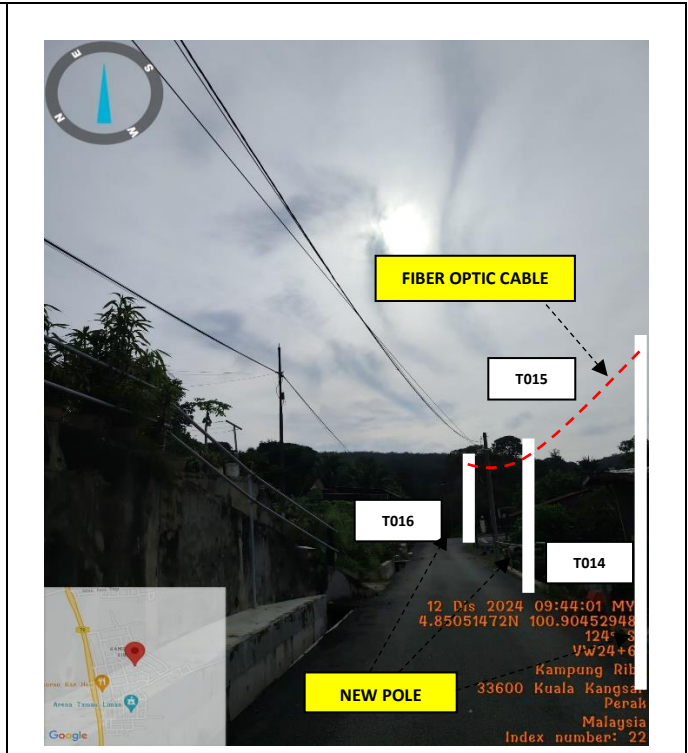
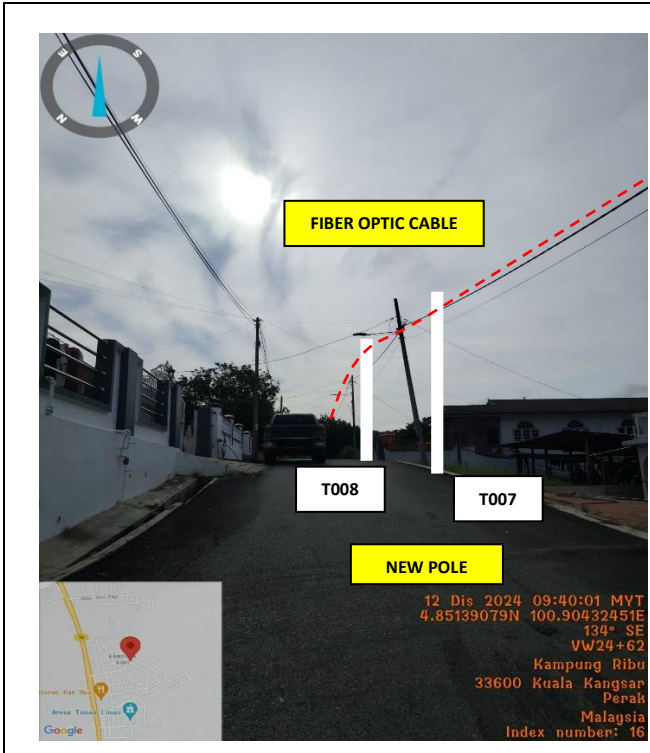
**PROJEK PENYEDIAAN DAN PENYELENGGARAAN POINT OF PRESENCE (POP)
 FASA 2: HAB INFRASTRUKTUR GENTIAN OPTIK BERHAMPIRAN DENGAN
 SEKOLAH, KAWASAN PERINDUSTRIAN, PREMIS KERAJAAN DAN KOMUNITI
 SEKITARNYA OLEH KEMENTERIAN KOMUNIKASI MALAYSIA - ZON UTARA
 (KKMM.400-11/17/132(1))**

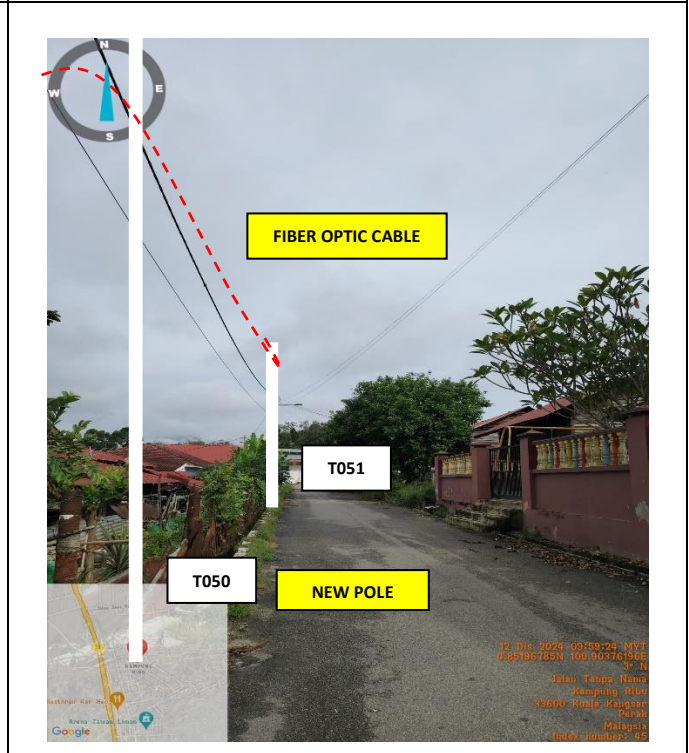
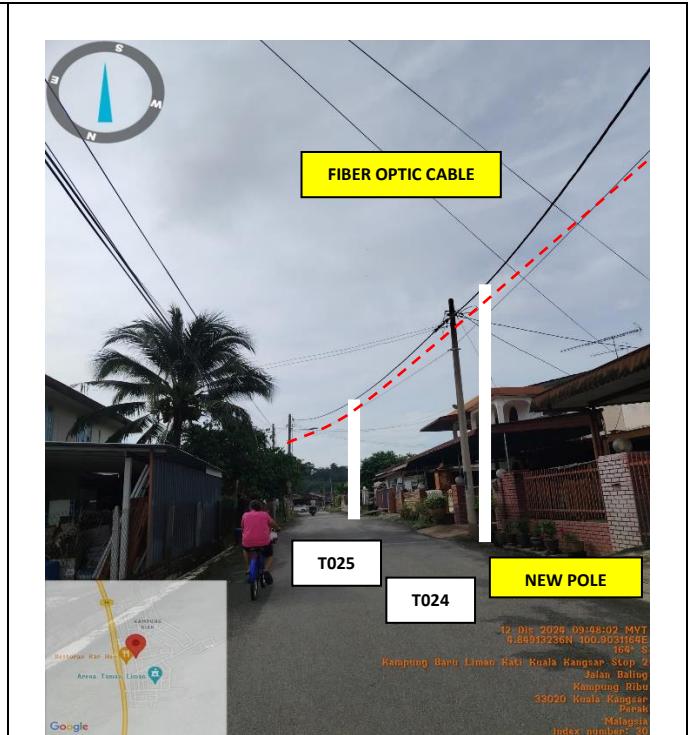
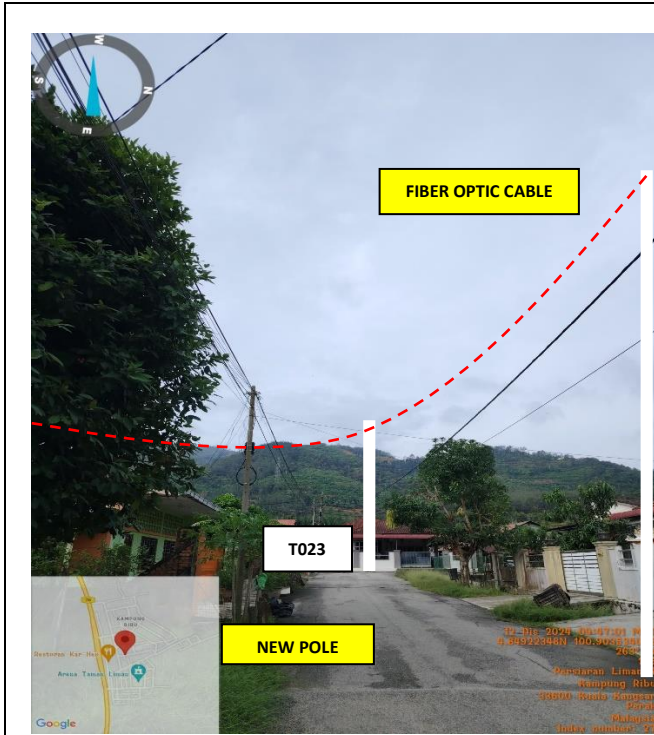


52	T046	35	4.851454	100.903235	Majlis Perbandaran Kuala Kangsar
53	T047	35	4.851693	100.903183	Majlis Perbandaran Kuala Kangsar
54	T048	35	4.851858	100.903117	Majlis Perbandaran Kuala Kangsar
55	T049	35	4.85191	100.90349	Majlis Perbandaran Kuala Kangsar
56	T050	35	4.851965	100.903727	Majlis Perbandaran Kuala Kangsar
57	T051	35	4.852272	100.90367	Majlis Perbandaran Kuala Kangsar
58	T052	70	4.852578	100.903566	Majlis Perbandaran Kuala Kangsar
59	T053	35	4.852608	100.903793	Majlis Perbandaran Kuala Kangsar
60	T054	35	4.852684	100.904031	Majlis Perbandaran Kuala Kangsar
61	T055	35	4.852721	100.904263	Majlis Perbandaran Kuala Kangsar
62	T056	35	4.85292	100.90421	Majlis Perbandaran Kuala Kangsar
63	T057	35	4.853273	100.904106	Majlis Perbandaran Kuala Kangsar
64	T058	35	4.853202	100.90384	Majlis Perbandaran Kuala Kangsar
65	T059	35	4.853186	100.903711	Majlis Perbandaran Kuala Kangsar
66	T060	35	4.853131	100.903342	Majlis Perbandaran Kuala Kangsar
67	T061	35	4.853063	100.902962	Majlis Perbandaran Kuala Kangsar
68	T062	35	4.852975	100.902592	Majlis Perbandaran Kuala Kangsar
69	T063	35	4.852874	100.902275	Majlis Perbandaran Kuala Kangsar
70	T064	35	4.852357	100.902389	Majlis Perbandaran Kuala Kangsar
71	T065	35	4.852012	100.902466	Majlis Perbandaran Kuala Kangsar
72	T066	35	4.851746	100.902527	Majlis Perbandaran Kuala Kangsar
73	T067	35	4.851506	100.902579	Majlis Perbandaran Kuala Kangsar
74	KACP ABC4092 T07	35	4.852522	100.903201	Majlis Perbandaran Kuala Kangsar

5.0 SITE PHOTO- PROPOSED NEW POLE







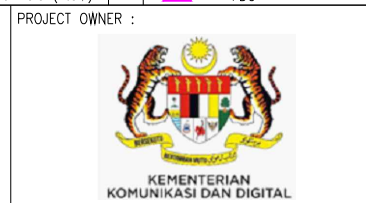
6.0 3rd PARTIES DEPENDENCIES

NO.	LOCAL COUNCIL/ AUTHORITY	REMARK
1	Majlis Perbandaran Kuala Kangsar	



LEGEND	NOS.		NOS.		NOS.		NOS.		NOS.		NOS.		NOS.		NOS.
	12C FOC	Installed 1:4 splitter in FDC			Installed Pole (9m)		New Manhole(JRC7)		Tension Small / Tension Big		MH NO.				
	24C FOC	FDP with (1:8) splitter	17		Installed Riser		House Number		Existing Manhole		Existing TNB Pole NO.				
	48C FOC	Closure	3		Suspension Big		Existing TNB Pole		Closure NO.		New Pole NO.				
	96C FOC	New Manhole (PIT)			Suspension Small		LOOP		FDP NO.		SEE A-A in this page				
	144C FOC	Installed Pole (7.5M)	67		FDC		FDP Boundary		FDC NO.		SEE SHEET XXX				

KEY PLAN :



PROJECT TITLE:
ABC4092 SEKOLAH JENIS KEBANGSAAN(C)LIMAN

DRAWING TITLE:
CONSTRUCTION DRAWING
ABC4092 SEKOLAH JENIS KEBANGSAAN(C)LIMAN

PROJECT PHASE:

Design By :	Date : 15.02.2025
Drawn By :	Scale :
Checked By :	Job Number :
DRAWING NUMBER :	Sheet : INDEX
THIS PRINT AND ITS COPYRIGHT ARE THE PROPERTY OF ALLO TECHNOLOGY SDN BHD	
Size : A3	

