

TECHNICAL PROPOSAL

POP2 ABC0052 SEKOLAH JENIS KEBANGSAAN (CINA) SUNGAI KROH (D-SIDE)

Company Name	:	STEADCOM SDN BHD
Company Address	:	11-3, Jalan Puteri 2/6, Bandar Puteri, 47100 Puchong, Selangor
Prepared By	:	Fariz Aizat
Date	:	21/12/2024



POINT A

POINT B

Starting Point

Site / Boundary Name	:	SEKOLAH JENIS KEBANGSAAN (CINA) SUNGAI KROH
Address	:	Kampung Baru Sungai Kroh, 35350 Kampar, Perak.
District	:	Kampar
Postcode	:	35350
State	:	Perak
GPS Coordinate	:	4.219689, 101.140181
LRD	:	A

End Point

Site / Boundary Name	:	SEKOLAH JENIS KEBANGSAAN (CINA) SUNGAI KROH
Address	:	Kampung Baru Sungai Kroh, 35350 Kampar, Perak.
District	:	Kampar
Postcode	:	35350
State	:	Perak
GPS Coordinate	:	4.218217, 101.145088
LRD	:	B

Work Summary

No	Proposed Distance and Method	Unit	Qty
1	Horizontal Directional Drilling (HDD)	m	200
2	Carriage Way Open trench (CW)	m	0
3	Grass Verge Open Trenching (GV)	m	6
4	Micro trenching (MT)	m	0
	Total		206

	Other Information	Unit	Qty
1	Proposed Manhole	EA	2
2	Proposed Pole	EA	115
3	Joint Closure	EA	6
4	Estimated time required for completion	days	30

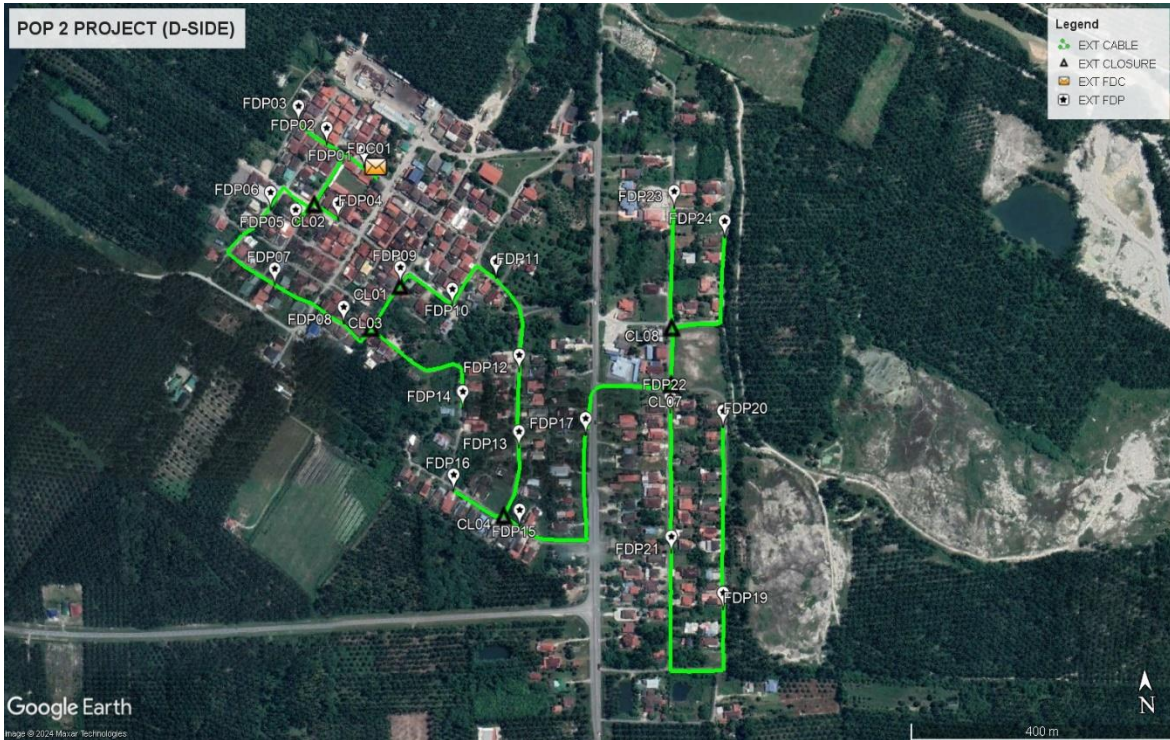
Local Authority Summary

1. Daerah Tapah

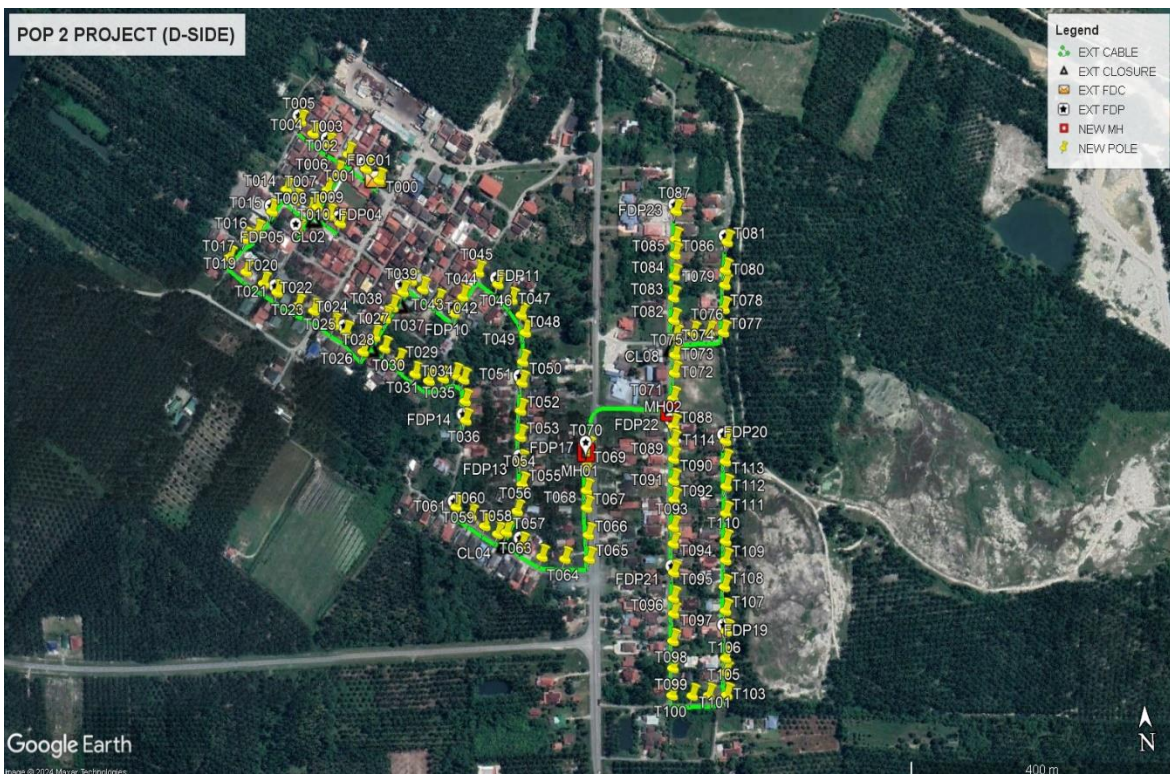
Bil	Items	Owner	Quantity	Distance(m)
1	HDD	JKR	2	200m
		Majlis	-	-
		Estate / Private Land	-	-
2	New Pole	JKR	7	190m
		Majlis	108	3140m
		Estate / Private Land	-	-
3	Existing TNB Pole	JKR	-	-
		Majlis	-	-
		Estate / Private Land	-	-
Total				3530m

Site Plan – KMZ (Overview site area)

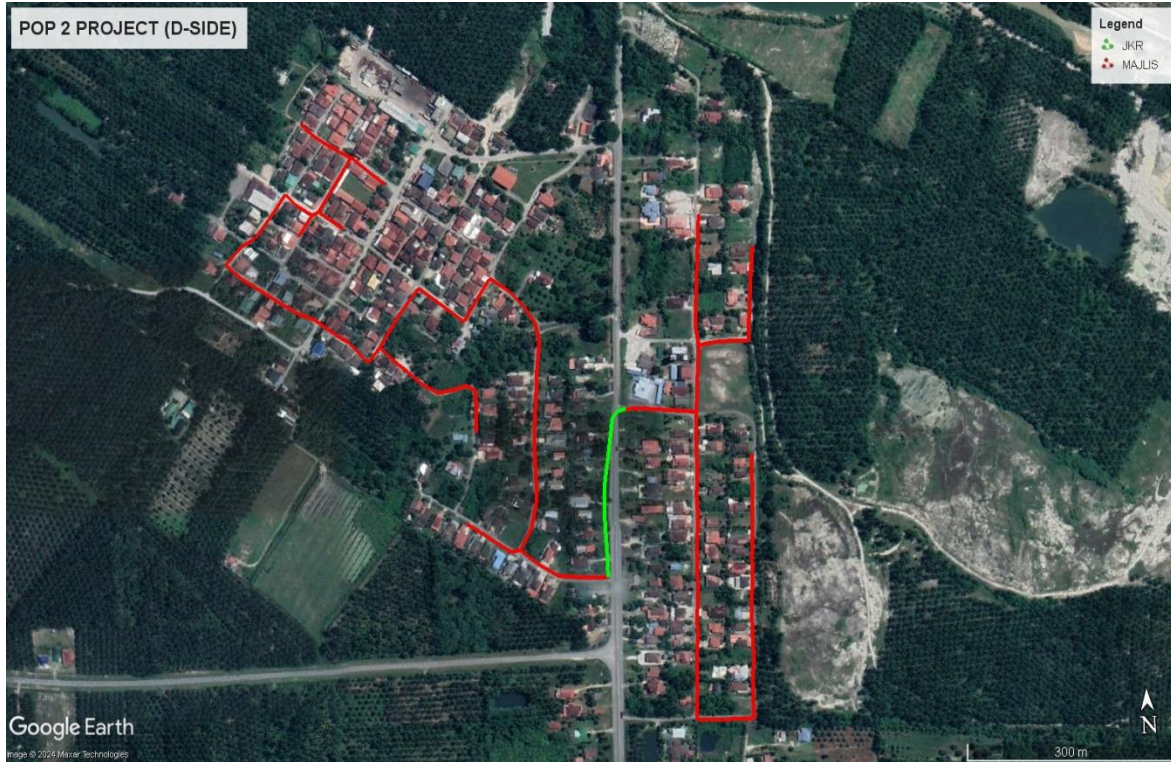
Proposed FDP and Closure



Proposed New Pole



Site Plan – KMZ Routing (All Local Authority)

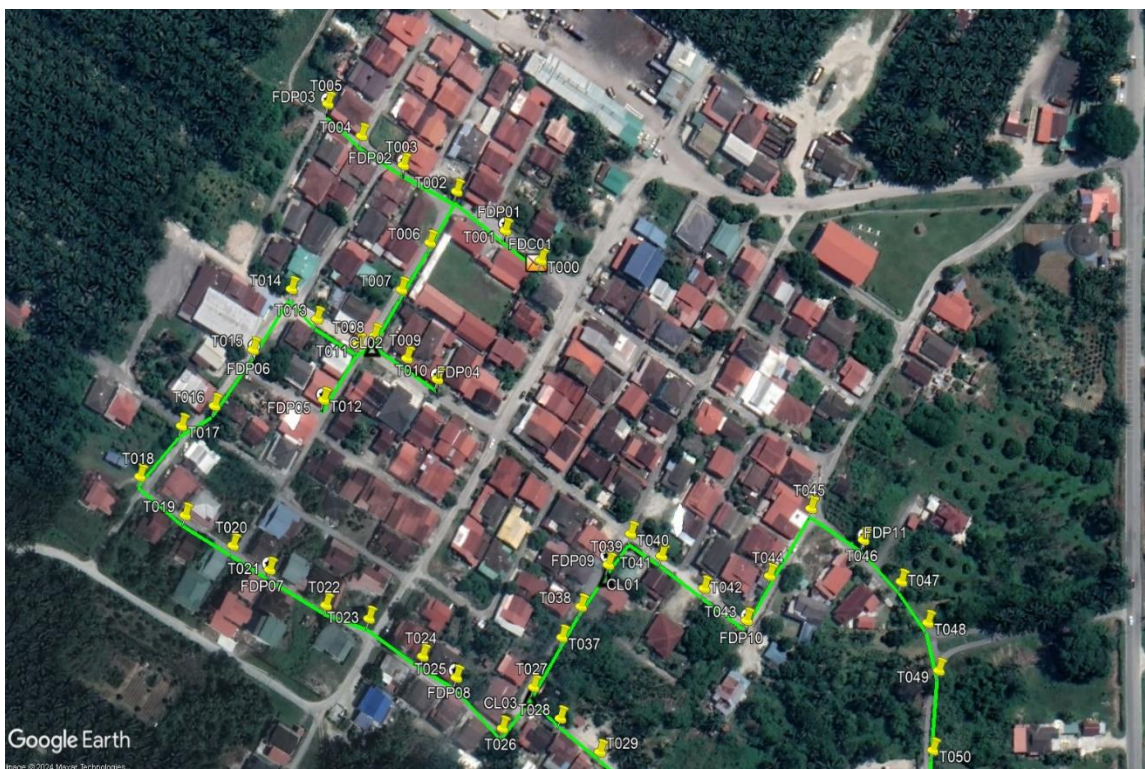
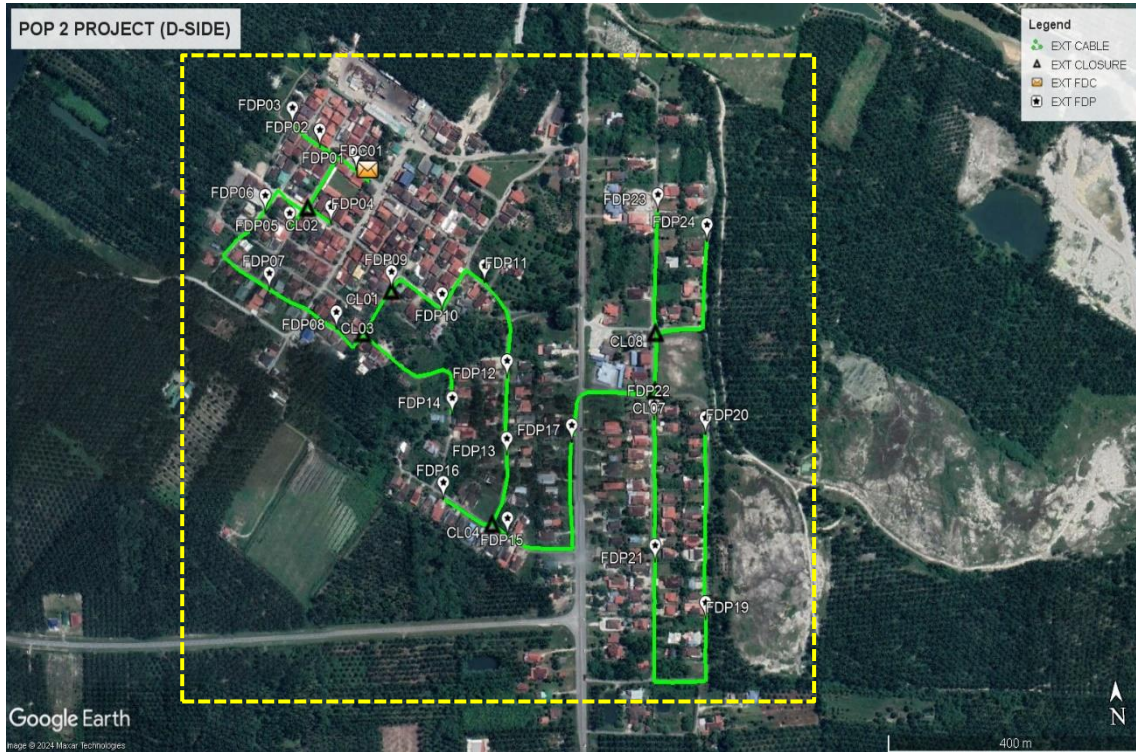


Green Colour – JKR Daerah Batang Padang

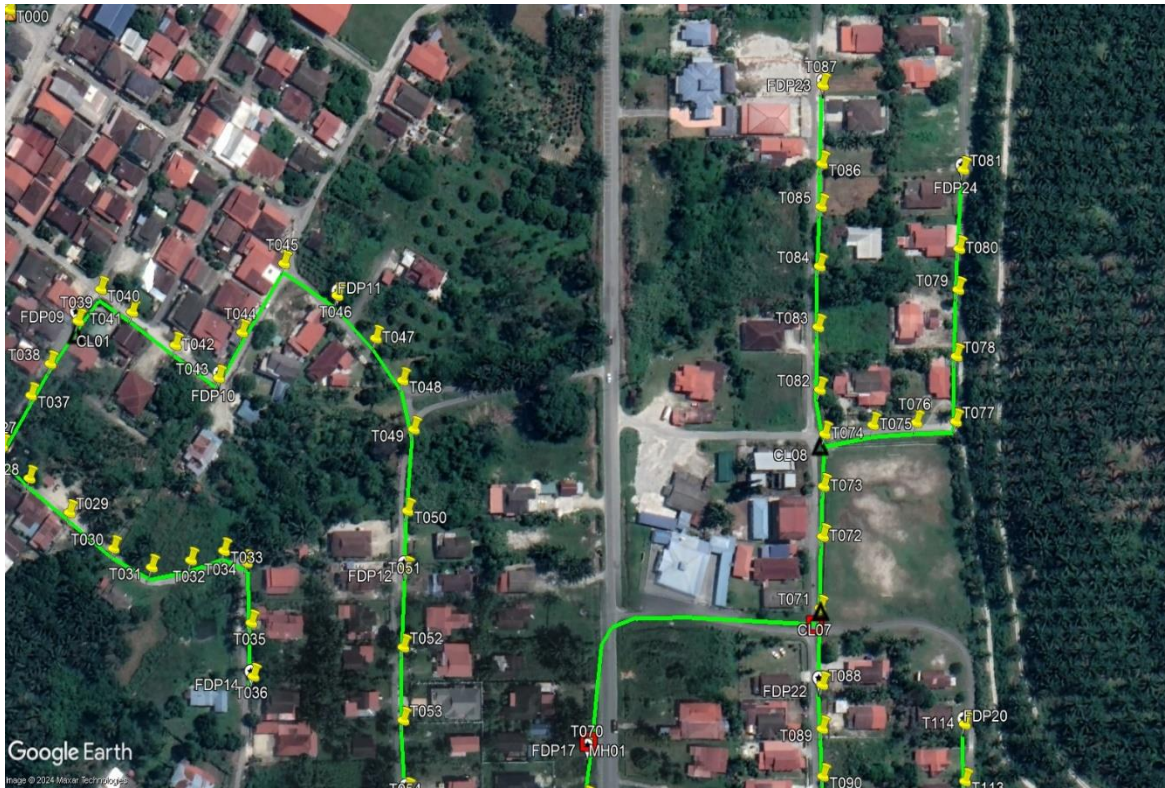
Red Colour – Majlis Daerah Tapah

Site Plan – KMZ Routing (All site area)

Route 1



Route 1.1

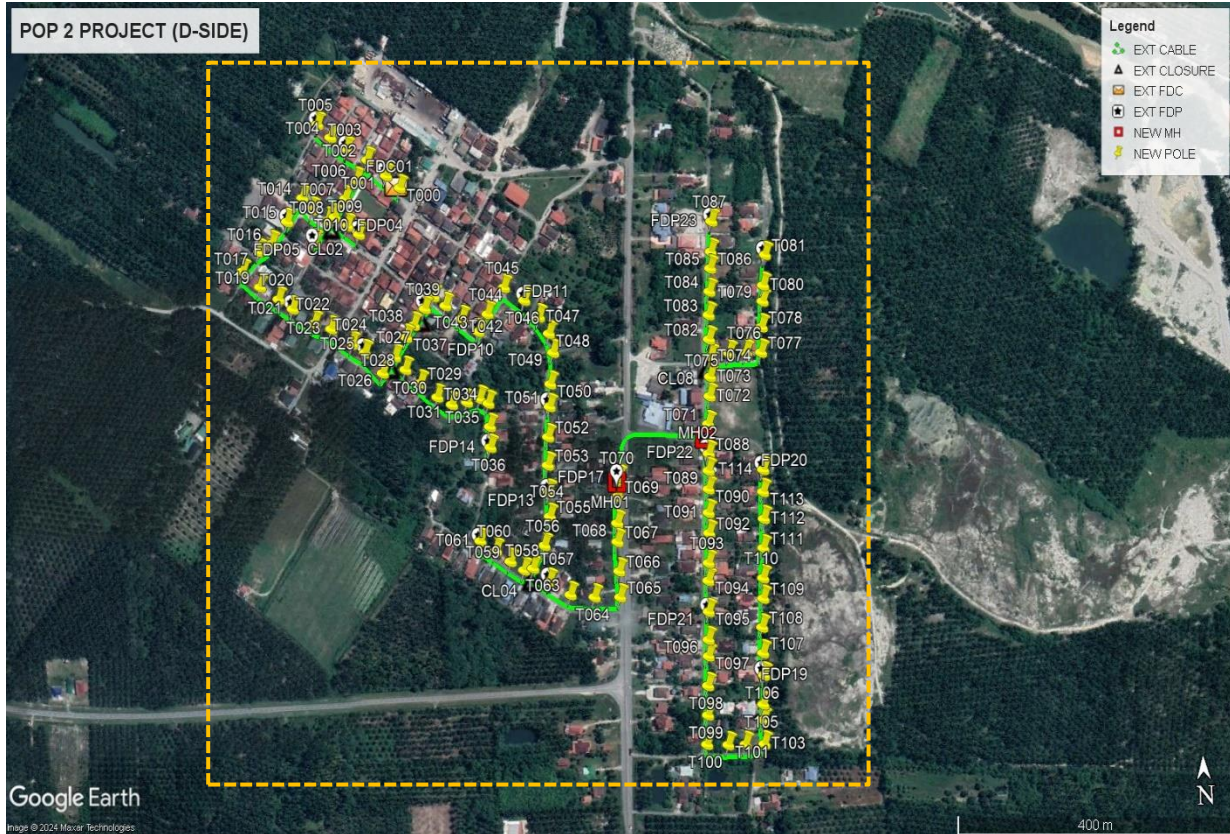


Route 1.2



Route 1.3

Site Plan – KMZ Routing (Proposed new Pole)



Proposed New Pole Lat & Long Table

No.	Label	Pole & Manhole ID	Latitude	Longitude	Local Authority
1	OLT / FDC	T000	4.219457	101.140385	MAJLIS DAERAH TAPAH
2	FDP01	T001	4.219606	101.140212	MAJLIS DAERAH TAPAH
3	FDP02	T003	4.219937	101.139712	MAJLIS DAERAH TAPAH
4	FDP03	T005	4.220243	101.139345	MAJLIS DAERAH TAPAH
5	FDP04	T010	4.218939	101.139828	MAJLIS DAERAH TAPAH
6	FDP05	T012	4.218877	101.139246	MAJLIS DAERAH TAPAH
7	FDP06	T015	4.219129	101.1389	MAJLIS DAERAH TAPAH
8	FDP07	T021	4.218109	101.138926	MAJLIS DAERAH TAPAH
9	FDP08	T025	4.217556	101.139845	MAJLIS DAERAH TAPAH
10	FDP09	T039	4.218034	101.140647	MAJLIS DAERAH TAPAH
11	FDP10	T043	4.217736	101.141335	MAJLIS DAERAH TAPAH
12	FDP11	T046	4.218074	101.141949	MAJLIS DAERAH TAPAH
13	FDP12	T051	4.21682	101.142224	MAJLIS DAERAH TAPAH
14	FDP13	T054	4.215822	101.142171	MAJLIS DAERAH TAPAH
15	FDP14	T036	4.216381	101.141431	MAJLIS DAERAH TAPAH
16	FDP15	T062	4.214786	101.142131	MAJLIS DAERAH TAPAH
17	FDP16	T061	4.215296	101.14125	MAJLIS DAERAH TAPAH
18	FDP17	T070	4.215954	101.143089	JKR DAERAH BATANG PADANG
19	FDP19	T106	4.213567	101.144878	MAJLIS DAERAH TAPAH
20	FDP20	T114	4.215953	101.144978	MAJLIS DAERAH TAPAH
21	FDP21	T095	4.214339	101.144191	MAJLIS DAERAH TAPAH
22	FDP22	T088	4.216181	101.144274	MAJLIS DAERAH TAPAH
23	FDP23	T087	4.218884	101.144431	MAJLIS DAERAH TAPAH
24	FDP24	T081	4.218464	101.145112	MAJLIS DAERAH TAPAH
25	CL01	T039	4.218034	101.140647	MAJLIS DAERAH TAPAH
26	CL02	T008	4.219157	101.13952	MAJLIS DAERAH TAPAH
27	CL03	T027	4.21749	101.140235	MAJLIS DAERAH TAPAH
28	CL04	T057	4.214948	101.141924	MAJLIS DAERAH TAPAH
29	CL07	T071	4.216527	101.144283	MAJLIS DAERAH TAPAH
30	CL08	T074	4.217311	101.144351	MAJLIS DAERAH TAPAH

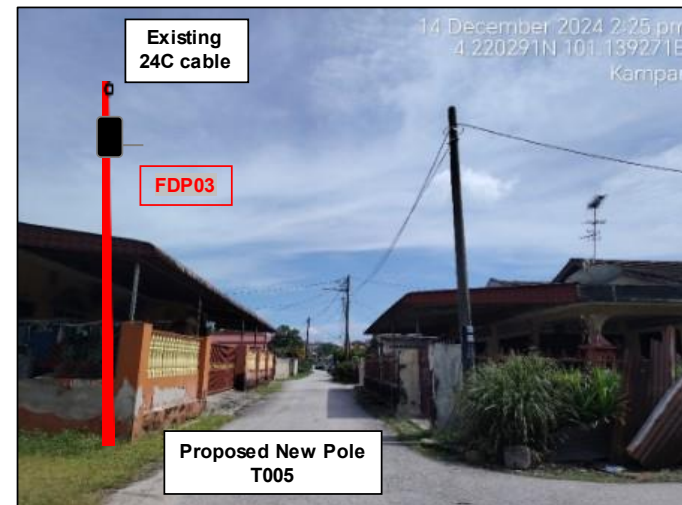
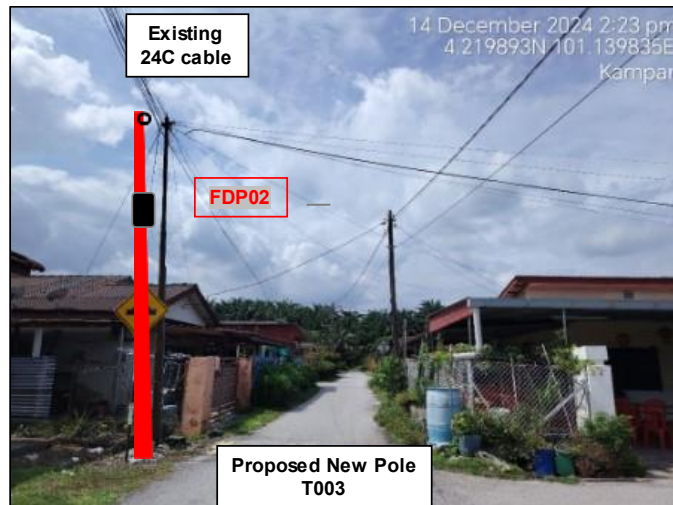
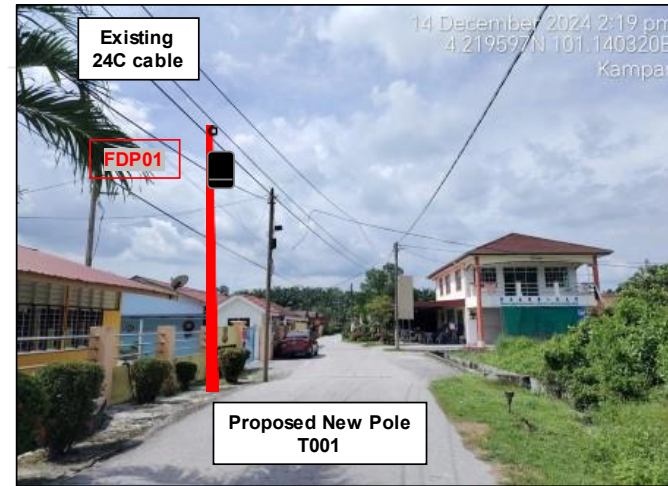
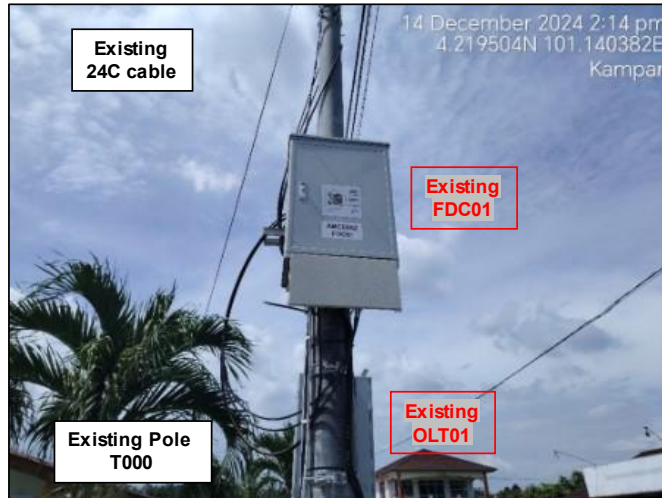
Overall Pole (Proposed New)

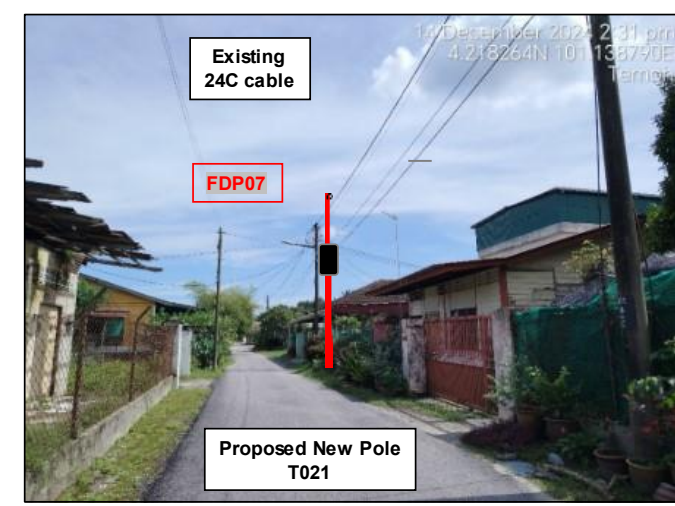
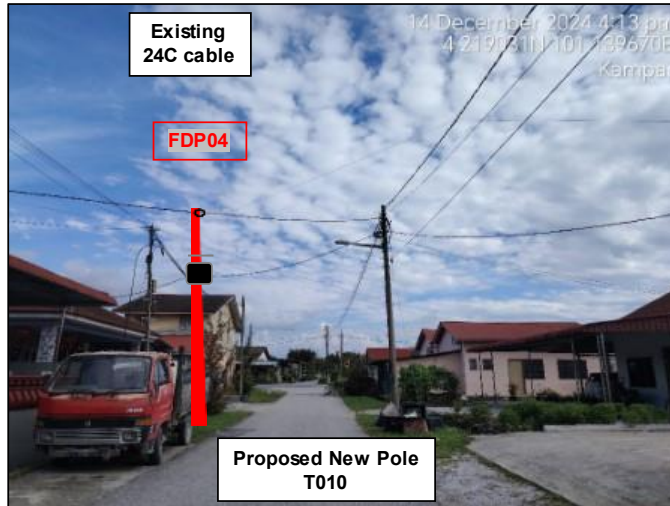
No.	Pole & Manhole ID	Distance	Latitude	Longitude	Local Authority
1	T000	0	4.219457	101.140385	MAJLIS DAERAH TAPAH
2	T001	26	4.219606	101.140212	MAJLIS DAERAH TAPAH
3	T002	34	4.219801	101.139976	MAJLIS DAERAH TAPAH
4	T003	33	4.219937	101.139712	MAJLIS DAERAH TAPAH
5	T004	28	4.220085	101.139507	MAJLIS DAERAH TAPAH
6	T005	26	4.220243	101.139345	MAJLIS DAERAH TAPAH
7	T006	30	4.219572	101.139828	MAJLIS DAERAH TAPAH
8	T007	30	4.219363	101.13967	MAJLIS DAERAH TAPAH
9	T008	28	4.219157	101.13952	MAJLIS DAERAH TAPAH
10	T009	22	4.219044	101.139679	MAJLIS DAERAH TAPAH
11	T010	20	4.218939	101.139828	MAJLIS DAERAH TAPAH
12	T011	12	4.219122	101.139435	MAJLIS DAERAH TAPAH
13	T012	34	4.218877	101.139246	MAJLIS DAERAH TAPAH
14	T013	27	4.219252	101.139233	MAJLIS DAERAH TAPAH
15	T014	21	4.219398	101.139111	MAJLIS DAERAH TAPAH
16	T015	38	4.219129	101.1389	MAJLIS DAERAH TAPAH
17	T016	36	4.218881	101.138689	MAJLIS DAERAH TAPAH
18	T017	21	4.218798	101.138517	MAJLIS DAERAH TAPAH
19	T018	36	4.218576	101.138292	MAJLIS DAERAH TAPAH
20	T019	33	4.218384	101.138511	MAJLIS DAERAH TAPAH
21	T020	31	4.218231	101.138747	MAJLIS DAERAH TAPAH
22	T021	25	4.218109	101.138926	MAJLIS DAERAH TAPAH
23	T022	37	4.217928	101.139203	MAJLIS DAERAH TAPAH
24	T023	26	4.217854	101.139417	MAJLIS DAERAH TAPAH
25	T024	36	4.217665	101.139681	MAJLIS DAERAH TAPAH
26	T025	22	4.217556	101.139845	MAJLIS DAERAH TAPAH
27	T026	38	4.217309	101.140066	MAJLIS DAERAH TAPAH
28	T027	28	4.21749	101.140235	MAJLIS DAERAH TAPAH
29	T028	23	4.217338	101.140363	MAJLIS DAERAH TAPAH
30	T029	28	4.217172	101.140555	MAJLIS DAERAH TAPAH
31	T030	31	4.216997	101.140766	MAJLIS DAERAH TAPAH
32	T031	23	4.216902	101.140951	MAJLIS DAERAH TAPAH
33	T032	23	4.216923	101.141149	MAJLIS DAERAH TAPAH
34	T033	20	4.216956	101.141317	MAJLIS DAERAH TAPAH
35	T034	14	4.216896	101.141427	MAJLIS DAERAH TAPAH
36	T035	30	4.216623	101.141435	MAJLIS DAERAH TAPAH
37	T036	27	4.216381	101.141431	MAJLIS DAERAH TAPAH
38	T037	30	4.217711	101.140393	MAJLIS DAERAH TAPAH
39	T038	20	4.217849	101.140498	MAJLIS DAERAH TAPAH
40	T039	27	4.218034	101.140647	MAJLIS DAERAH TAPAH

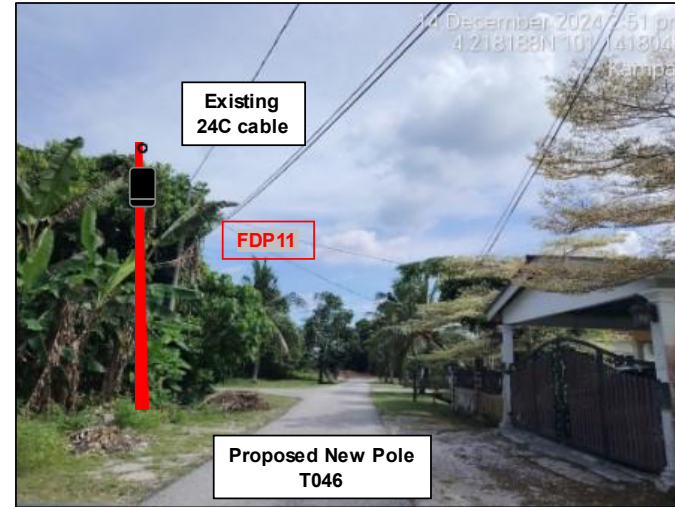
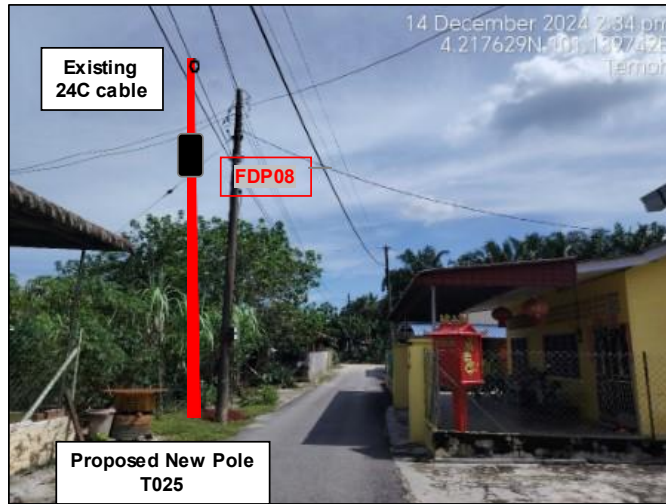
41	T040	20	4.21817	101.140769	MAJLIS DAERAH TAPAH
42	T041	20	4.218058	101.140919	MAJLIS DAERAH TAPAH
43	T042	30	4.217896	101.141127	MAJLIS DAERAH TAPAH
44	T043	29	4.217736	101.141335	MAJLIS DAERAH TAPAH
45	T044	26	4.217935	101.141464	MAJLIS DAERAH TAPAH
46	T045	40	4.218234	101.141691	MAJLIS DAERAH TAPAH
47	T046	34	4.218074	101.141949	MAJLIS DAERAH TAPAH
48	T047	30	4.217871	101.142131	MAJLIS DAERAH TAPAH
49	T048	27	4.217673	101.142255	MAJLIS DAERAH TAPAH
50	T049	26	4.21745	101.142297	MAJLIS DAERAH TAPAH
51	T050	40	4.217083	101.142246	MAJLIS DAERAH TAPAH
52	T051	30	4.21682	101.142224	MAJLIS DAERAH TAPAH
53	T052	39	4.21647	101.142189	MAJLIS DAERAH TAPAH
54	T053	37	4.21614	101.14217	MAJLIS DAERAH TAPAH
55	T054	35	4.215822	101.142171	MAJLIS DAERAH TAPAH
56	T055	30	4.215543	101.14217	MAJLIS DAERAH TAPAH
57	T056	38	4.215206	101.142083	MAJLIS DAERAH TAPAH
58	T057	33	4.214948	101.141924	MAJLIS DAERAH TAPAH
59	T058	14	4.214933	101.141805	MAJLIS DAERAH TAPAH
60	T059	23	4.215041	101.141633	MAJLIS DAERAH TAPAH
61	T060	25	4.215175	101.141447	MAJLIS DAERAH TAPAH
62	T061	25	4.215296	101.14125	MAJLIS DAERAH TAPAH
63	T062	28	4.214786	101.142131	MAJLIS DAERAH TAPAH
64	T063	35	4.214618	101.142397	MAJLIS DAERAH TAPAH
65	T064	36	4.214577	101.14271	MAJLIS DAERAH TAPAH
66	T065	36	4.214562	101.143044	JKR DAERAH BATANG PADANG
67	T066	33	4.214864	101.143045	JKR DAERAH BATANG PADANG
68	T067	38	4.215207	101.143038	JKR DAERAH BATANG PADANG
69	T068	24	4.215424	101.143045	JKR DAERAH BATANG PADANG
70	T069	35	4.215734	101.143065	JKR DAERAH BATANG PADANG
71	T070	24	4.215954	101.143089	JKR DAERAH BATANG PADANG
72	MH01	3	4.215954	101.143089	JKR DAERAH BATANG PADANG
73	MH02	200	4.216527	101.144283	MAJLIS DAERAH TAPAH
74	T071	3	4.216527	101.144283	MAJLIS DAERAH TAPAH
75	T072	35	4.216849	101.144315	MAJLIS DAERAH TAPAH
76	T073	25	4.217075	101.144332	MAJLIS DAERAH TAPAH
77	T074	25	4.217311	101.144351	MAJLIS DAERAH TAPAH
78	T075	28	4.217338	101.144594	MAJLIS DAERAH TAPAH
79	T076	25	4.217336	101.144812	MAJLIS DAERAH TAPAH
80	T077	20	4.217329	101.145009	MAJLIS DAERAH TAPAH
81	T078	32	4.217623	101.145029	MAJLIS DAERAH TAPAH
82	T079	33	4.217924	101.145055	MAJLIS DAERAH TAPAH
83	T080	20	4.218108	101.145071	MAJLIS DAERAH TAPAH
84	T081	40	4.218464	101.145112	MAJLIS DAERAH TAPAH
85	T082	22	4.217512	101.144337	MAJLIS DAERAH TAPAH

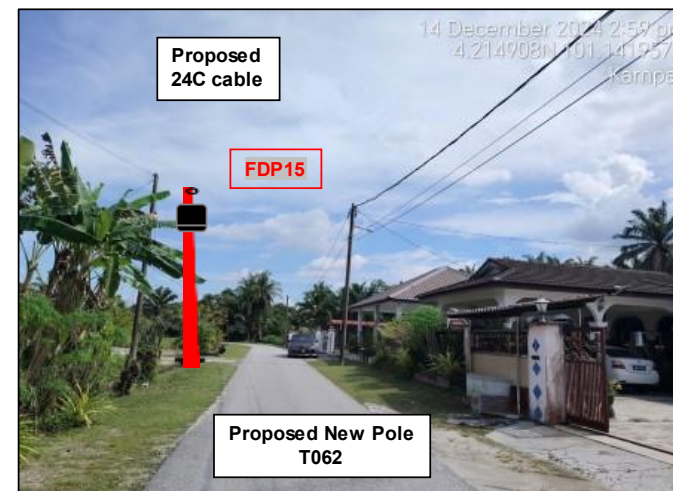
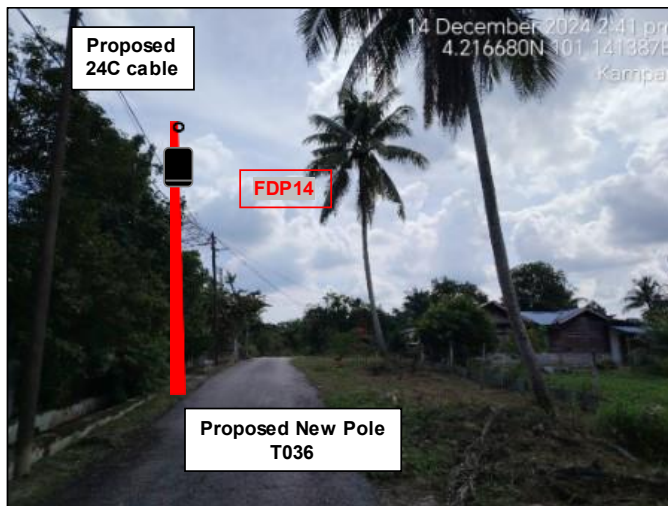
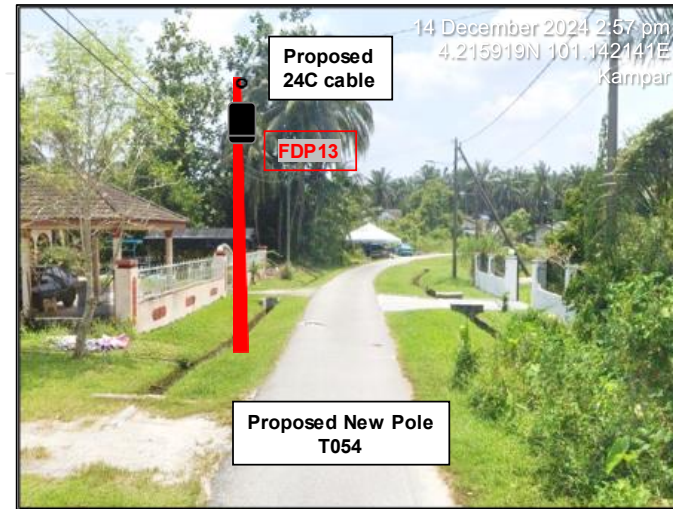
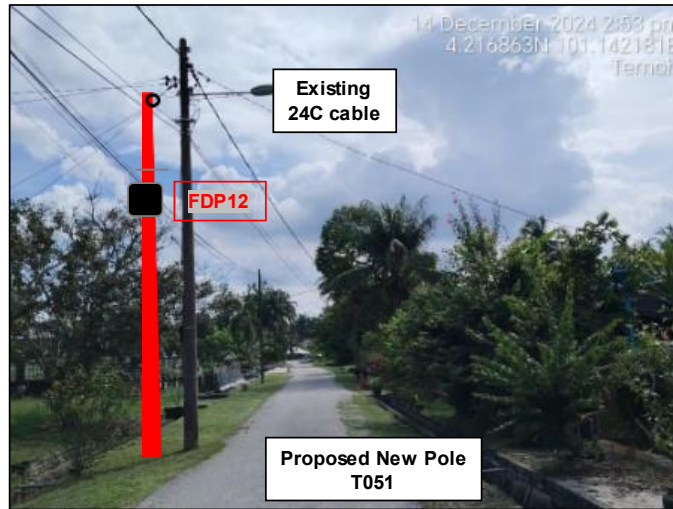
86	T083	31	4.217796	101.144345	MAJLIS DAERAH TAPAH
87	T084	30	4.218069	101.144368	MAJLIS DAERAH TAPAH
88	T085	30	4.218337	101.144391	MAJLIS DAERAH TAPAH
89	T086	22	4.218531	101.144407	MAJLIS DAERAH TAPAH
90	T087	38	4.218884	101.144431	MAJLIS DAERAH TAPAH
91	T088	23	4.216181	101.144274	MAJLIS DAERAH TAPAH
92	T089	25	4.215982	101.144262	MAJLIS DAERAH TAPAH
93	T090	30	4.215767	101.144253	MAJLIS DAERAH TAPAH
94	T091	27	4.215493	101.144241	MAJLIS DAERAH TAPAH
95	T092	38	4.215255	101.144237	MAJLIS DAERAH TAPAH
96	T093	24	4.214908	101.144215	MAJLIS DAERAH TAPAH
97	T094	40	4.214701	101.144202	MAJLIS DAERAH TAPAH
98	T095	35	4.214339	101.144191	MAJLIS DAERAH TAPAH
99	T096	22	4.214014	101.144172	MAJLIS DAERAH TAPAH
100	T097	38	4.213822	101.144165	MAJLIS DAERAH TAPAH
101	T098	38	4.213478	101.144142	MAJLIS DAERAH TAPAH
102	T099	38	4.213135	101.144126	MAJLIS DAERAH TAPAH
103	T100	3	4.212794	101.144099	MAJLIS DAERAH TAPAH
104	T101	30	4.212778	101.144375	MAJLIS DAERAH TAPAH
105	T102	26	4.212771	101.1446	MAJLIS DAERAH TAPAH
106	T103	27	4.212767	101.144847	MAJLIS DAERAH TAPAH
107	T104	32	4.213046	101.144847	MAJLIS DAERAH TAPAH
108	T105	20	4.213228	101.144852	MAJLIS DAERAH TAPAH
109	T106	38	4.213567	101.144878	MAJLIS DAERAH TAPAH
110	T107	30	4.213827	101.144877	MAJLIS DAERAH TAPAH
111	T108	33	4.214127	101.144878	MAJLIS DAERAH TAPAH
112	T109	38	4.214462	101.144909	MAJLIS DAERAH TAPAH
113	T110	26	4.214701	101.144918	MAJLIS DAERAH TAPAH
114	T111	38	4.21505	101.144936	MAJLIS DAERAH TAPAH
115	T112	38	4.21539	101.144958	MAJLIS DAERAH TAPAH
116	T113	35	4.215705	101.144963	MAJLIS DAERAH TAPAH
117	T114	30	4.215953	101.144978	MAJLIS DAERAH TAPAH

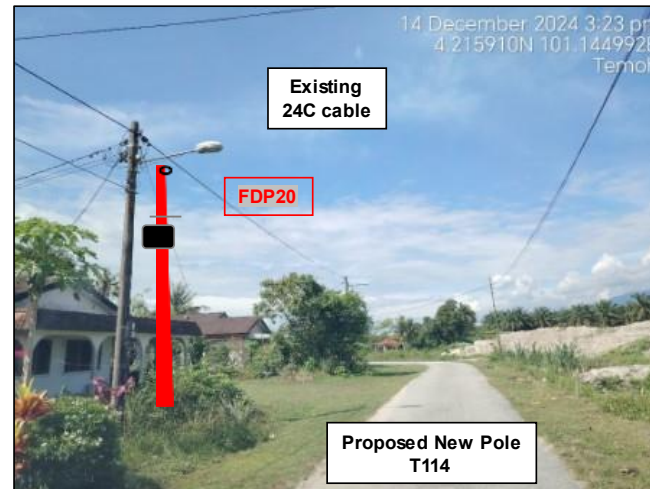
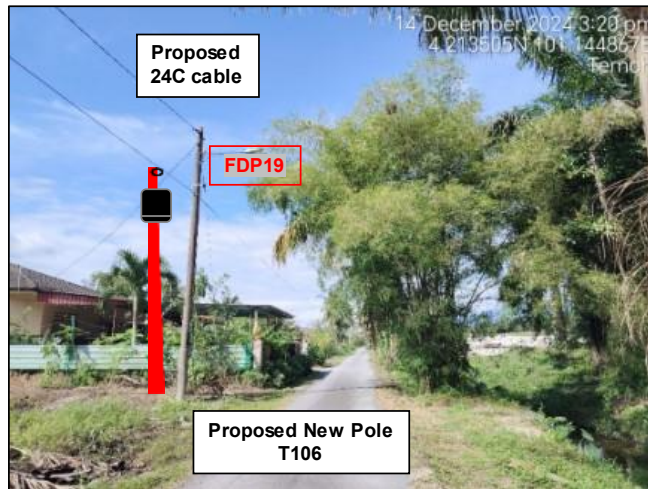
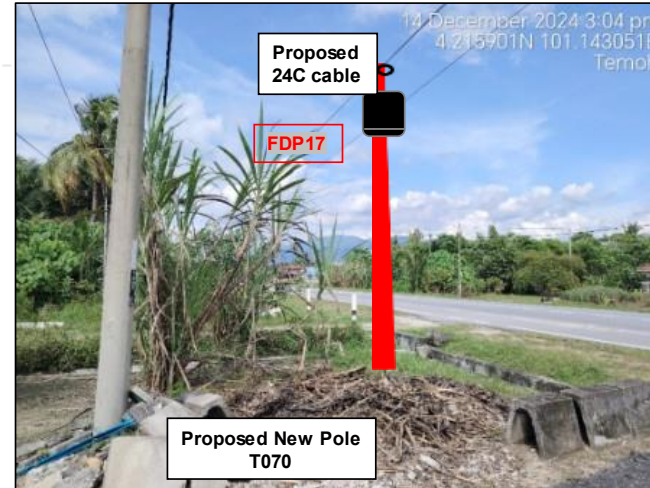
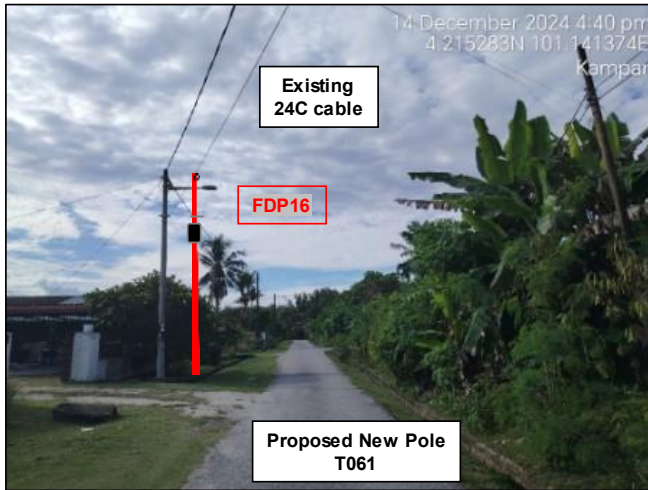
Site Photos – Proposed to install pole

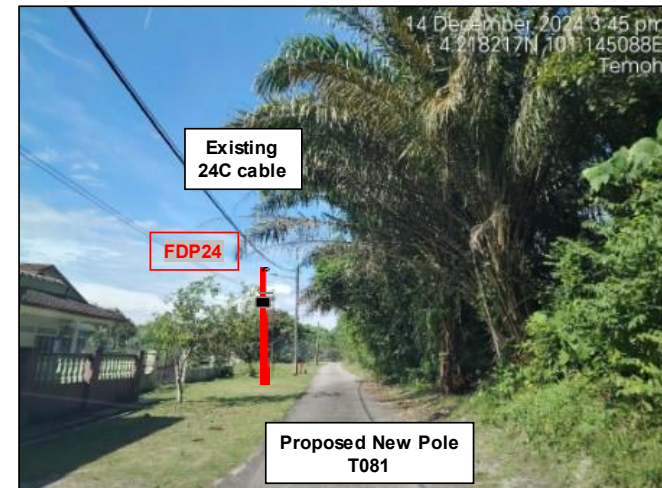
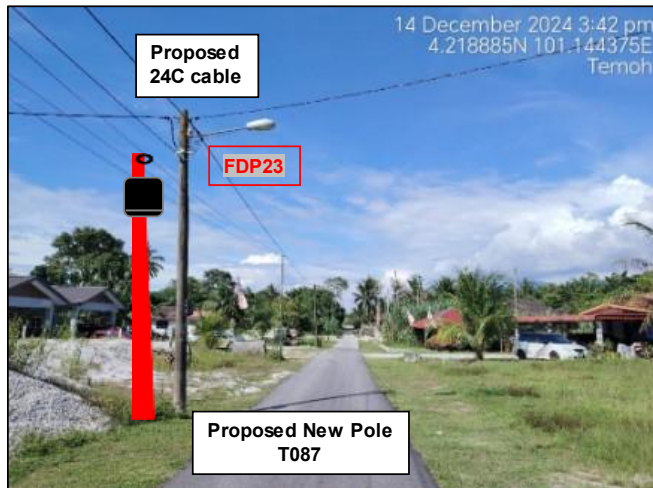
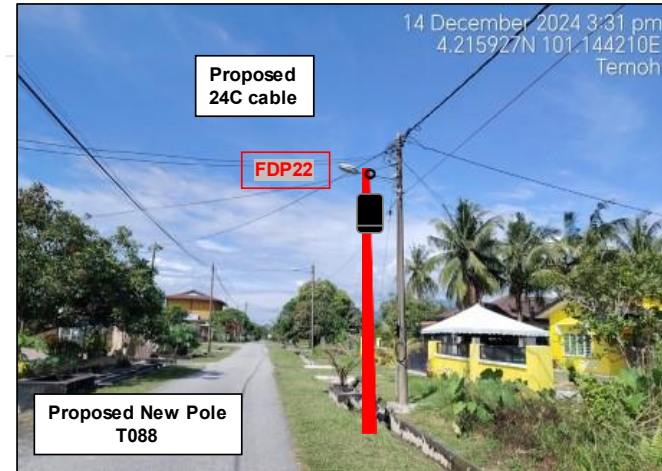
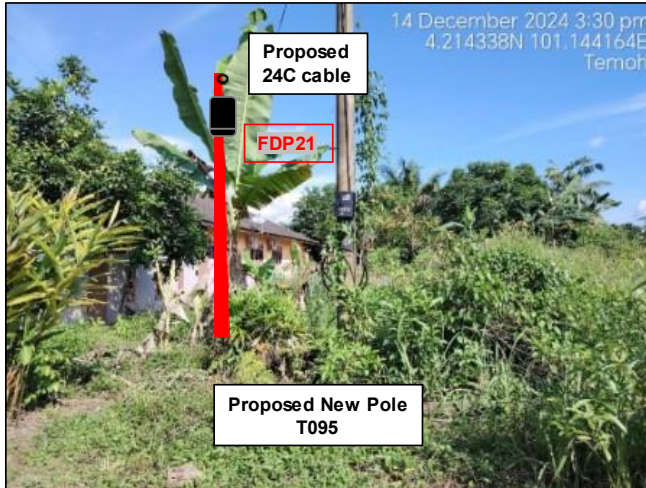






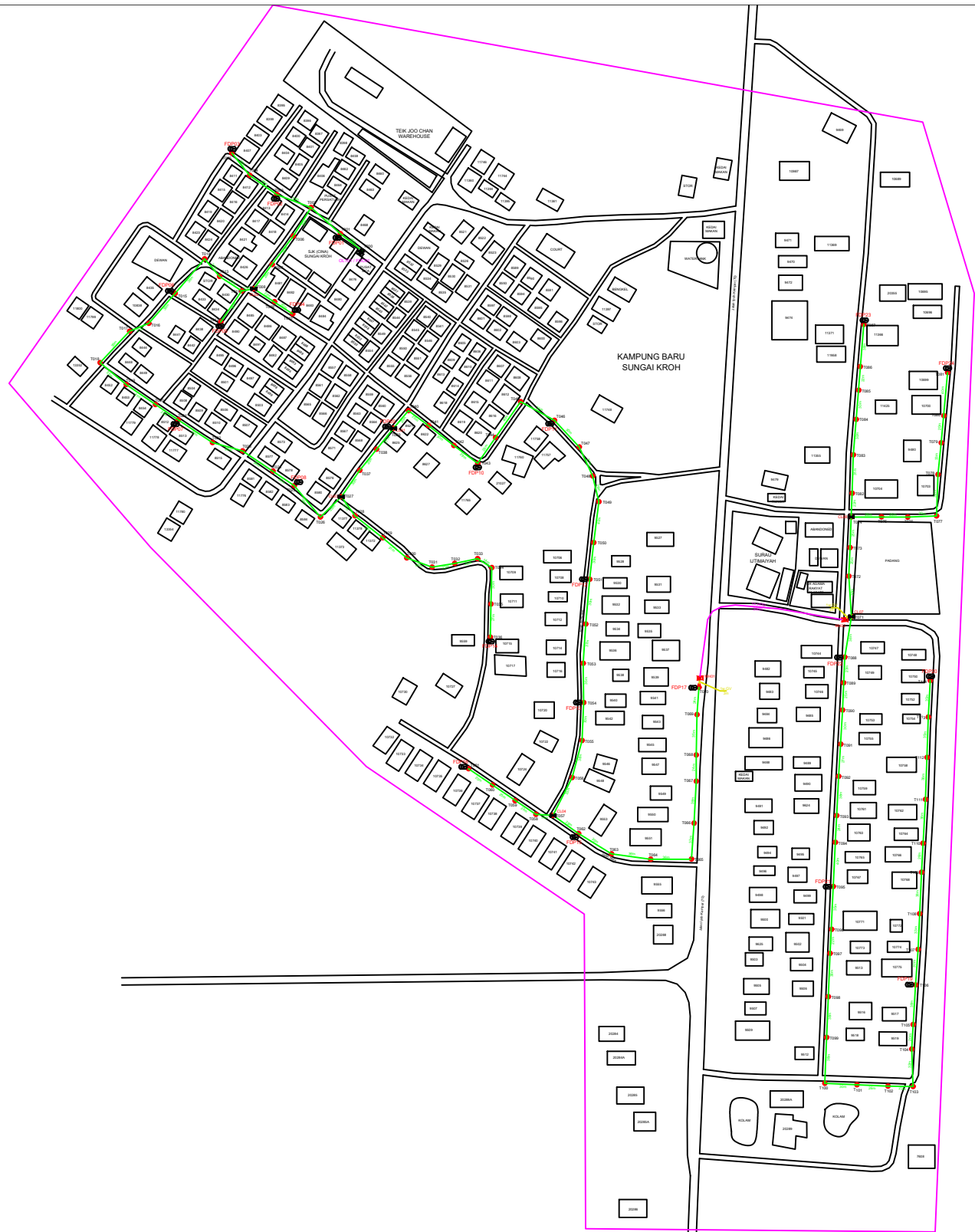






3rd Parties Dependencies

No.	Local Council/ Authority	Remark
1	JKR Daerah Batang Padang	
2	Majlis Daerah Tapah	
3		
4		
5		
6		



12C FOC	Installed 1:4 / 1:8 / 1:32 splitter	Installed Pole (9m)	Suspension	114	New Manhole (PIT)	Micro-Trenching (Meter)	MH1	MH NO.
24C FOC	Installed Patch Cord	Installed Pole (7.5M)	Tension	220	New Manhole(JRC7)	Temporary Infra (Meter)	TKS-1	Existing TNB Pole NO.
48C FOC	FDC	Installed Pole (6.7M)	Pole Ring	23	FDP Boundary	Loop / Coil (Meter)	P001	New Pole NO.
96C FOC	Closure	Existing TNB Pole	FDP with (1:8) splitter	23	HDD (Meter)	Active Outdoor Cabinet	CL01	Closure NO.
144C FOC	Existing Closure	Installed Riser (6M)	Existing Manhole	6	Open Cut (Meter)	FDC NO.	DP1	FDP NO.

ACTUAL HOMEPASS :

KEY PLAN:

PROJECT OWNER:

MAIN CONTRACTOR:

SUB-CONTRACTOR:

PROJECT TITLE:
 CONTRACTOR FOR SURVEY, TECHNICAL PROPOSAL AND WAYLEAVE & PERMIT APPROVAL -POP2 PROJECT

DRAWING TITLE:
 Construction Drawing ABC0052 SJK (CINA) SUNGAI KROH

PROJECT PHASE:
 POP 2

Design By :	Date :	21/12/2024
Drawn By :	Scale :	NTS
Checked By :	Job Number :	JOB/NUMBER
DRAWING NUMBER :		Sheet :
ABC0052-CD-01		1/4
THIS PRINT AND ITS COPYRIGHT ARE THE PROPERTY OF STEADCOM SDN BHD		
		Size : A3



12C FOC	Installed 1:4 / 1:8 / 1:32 splitter	Installed Pole (9m)	Suspension	114	IB30	New Manhole (PIT)	Micro-Trenching (Meter)	MH1	MH NO.
24C FOC	3767m Installed Patch Cord	Installed Pole (7.5M)	Tension	220	C7	New Manhole(JRC7)	Temporary Infra (Meter)	TKS-1	Existing TNB Pole NO.
48C FOC	FDC	Installed Pole (6.7M)	Pole Ring	23		FDP Boundary	Loop / Coil (Meter)	P001	New Pole NO.
96C FOC	Closure	Existing TNB Pole	FDP with (1:8) splitter	23		HDD (Meter)	#	CL01	Closure NO.
144C FOC	Existing Closure	Installed Riser (6M)	Existing Manhole	2		Open Cut (Meter)	C01	DP1	FDP NO.

ACTUAL HOMEPASS :

KEY PLAN: 	PROJECT OWNER: 	MAIN CONTRACTOR: 	SUB-CONTRACTOR:	PROJECT TITLE: CONTRACTOR FOR SURVEY, TECHNICAL PROPOSAL AND WAYLEAVE & PERMIT APPROVAL -POP2 PROJECT	DRAWING TITLE: Construction Drawing ABC0052 SJK (CINA) SUNGAI KROH	Design By :	Date : 21/12/2024
						Drawn By :	Scale : NTS
PROJECT PHASE: POP 2						Checked By :	Job Number : JOB/NUMBER
DRAWING NUMBER : ABC0052-CD-01						Sheet : 2/4	Size : A3
THIS PRINT AND ITS COPYRIGHT ARE THE PROPERTY OF STEADCOM SDN BHD							



12C FOC	Installed 1:4 / 1:8 / 1:32 splitter	114	Installed Pole (9m)	Suspension	114	New Manhole (PIT)	Micro-Trenching (Meter)	MH1	MH NO.
24C FOC	3767m Installed Patch Cord	114	Installed Pole (7.5M)	Tension	220	New Manhole(JRC7)	Temporary Infra (Meter)	TKS-1	Existing TNB Pole NO.
48C FOC	FDC	1	Installed Pole (6.7M)	Pole Ring	23	FDP Boundary	Loop / Coil (Meter)	P001	New Pole NO.
96C FOC	Closure	23	Existing TNB Pole	FDP with (1:8) splitter	23	HDD (Meter)	Active Outdoor Cabinet	CL01	Closure NO.
144C FOC	Existing Closure	6	Installed Riser (6M)	Existing Manhole	2	Open Cut (Meter)	FDC NO.	DP1	FDP NO.

ACTUAL HOMEPASS :

KEY PLAN:	PROJECT OWNER:	MAIN CONTRACTOR:	SUB-CONTRACTOR:	PROJECT TITLE:	DRAWING TITLE:	Design By :	Date :
				CONTRACTOR FOR SURVEY, TECHNICAL PROPOSAL AND WAYLEAVE & PERMIT APPROVAL -POP2 PROJECT	Construction Drawing ABC0052 SJK (CINA) SUNGAI KROH	Drawn By :	21/12/2024
					PROJECT PHASE:	Checked By :	Scale :
					POP 2	Job Number :	NTS
						DRAWING NUMBER :	Job Number :
						ABC0052-CD-01	JOB/NUMBER
						Sheet :	4/4
						THIS PRINT AND ITS COPYRIGHT ARE THE PROPERTY OF STEADCOM SDN BHD	Size :
							A3

