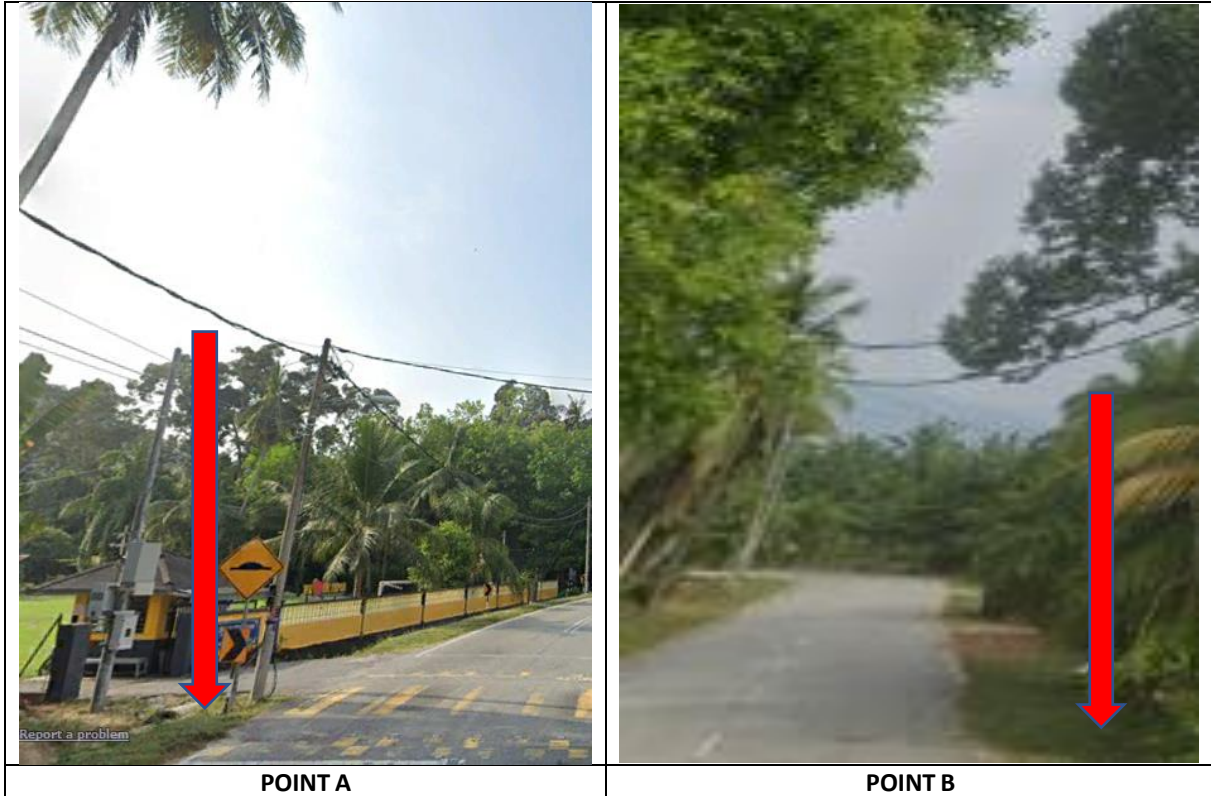


## TECHNICAL PROPOSAL

### POP2 ABA 8203 SEKOLAH KEBANGSAAN TEPUS (D-SIDE)

Company Name :	WCWL Communication Sdn Bhd
Company Address :	No 127 Jalan PUJ 3/3, Taman Puncak Jalil, Bandar Putra Permai 43300 Selangor
Prepared By :	Ramdan
Date :	16 Dec 2024



**Starting Point**

Site / Boundary Name	: SEKOLAH KEBANGSAAN TEPUS
Address	: Kampung Tepus
District	: Perak Tengah
Postcode	: 32800
State	: Perak
GPS Coordinate	: 4°31'17.23"N, 100°55'49.84"E
LRD	: A

**End Point**

Site / Boundary Name	: SEKOLAH KEBANGSAAN TEPUS
Address	: Kampung Tepus
District	: Perak Tengah
Postcode	: 32800
State	: Perak
GPS Coordinate	: 4°31'45.03"N, 100°55'58.29"E
LRD	: B

## Work Summary

No	Proposed Distance and Method	Unit	Qty
1	Horizontal Directional Drilling (HDD)	m	0
2	Carriage Way Open trench (CW)	m	0
3	Grass Verge Open Trenching (GV)	m	0
4	Micro trenching (MT)	m	0
	Total		0

	Other Information	Unit	Qty
1	Proposed Manhole	EA	0
2	Proposed Pole	EA	105
3	Joint Closure	EA	5
4	Estimated time required for completion	days	90

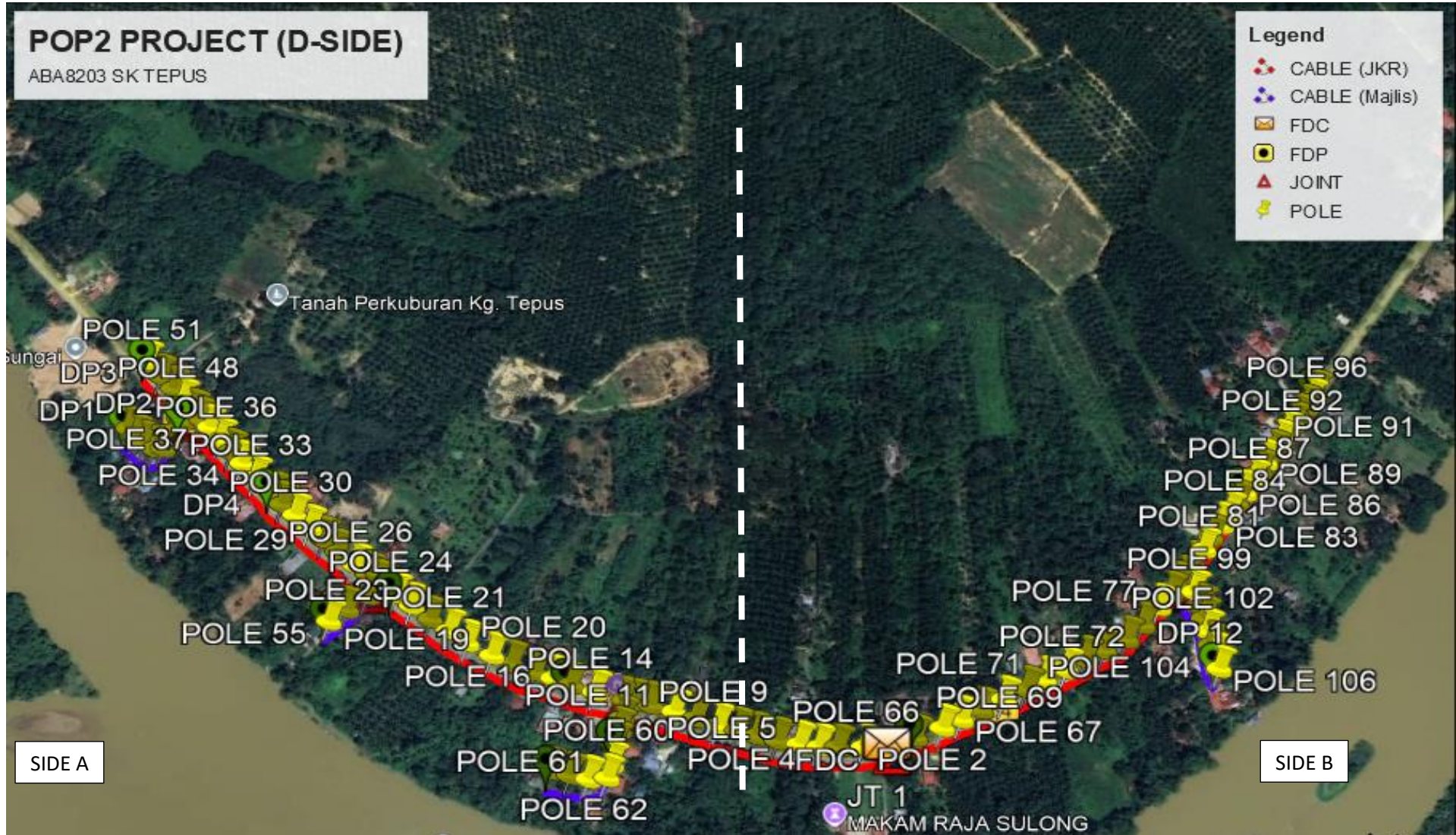
## Local Authority Summary

### 1. Daerah Perak Tengah

Bil	Items	Owner	Quantity	Distance
1	HDD	JKR	-	-
		Majlis	-	-
		Pejabat Daerah & Tanah	-	-
		Estate / Private Land	-	-
2	New Pole	JKR	75	1900m
		Majlis	30	700m
		Pejabat Daerah & Tanah	-	-
		Estate / Private Land	-	-
3	Existing TNB Pole	JKR	-	-
		Majlis	-	-
		Pejabat Daerah & Tanah	-	-
		Estate / Private Land	-	-
Total				2600m

**Site Plan – KMZ (Overview site area)**

**Proposed Cable and New Pole**













### Prop New Pole Lat & Long Table

PROPOSED POLE COORDINATE		
POLE NUMBER	LATITUDE	LONGITUDE
T 001	4.529014874	100.932934478
T 002	4.528720847	100.933003729
T 003	4.528482096	100.933029390
T 004	4.528318011	100.933044044
T 005	4.528132816	100.933038638
T 006	4.527933597	100.933024647
T 007	4.527735005	100.932995658
T 008	4.527563415	100.932965637
T 009	4.527375708	100.932936179
T 010	4.527166013	100.932886596
T 011	4.526964616	100.932840179
T 012	4.526740822	100.932800167
T 013	4.526612854	100.932789020
T 014	4.526216572	100.932728130
T 015	4.525986734	100.932680743
T 016	4.525816567	100.932633159
T 017	4.525642362	100.932592395
T 018	4.525419221	100.932531702
T 019	4.525226406	100.932468258
T 020	4.524981073	100.932369677
T 021	4.524798119	100.932265564
T 022	4.524606907	100.932165688
T 023	4.524417084	100.932050784
T 024	4.524247296	100.931958304
T 025	4.523964357	100.931777782
T 026	4.523827062	100.931696688
T 027	4.523649430	100.931580781
T 028	4.523492200	100.931466262
T 029	4.523345645	100.931360295
T 030	4.523187652	100.931243963
T 031	4.523048156	100.931145355
T 032	4.522934884	100.931043012
T 033	4.522748093	100.930898209
T 034	4.522599910	100.930761682
T 035	4.522472376	100.930649097
T 036	4.522354129	100.930536550
T 037	4.522227493	100.930416843
T 038	4.522138106	100.930346871
T 039	4.522043589	100.930267725
T 040	4.521964493	100.930371920
T 041	4.521903617	100.930480467
T 042	4.521860420	100.930590651
T 043	4.521815659	100.930682920
T 044	4.521731169	100.930697451
T 045	4.521633263	100.930652455
T 046	4.521542090	100.930585603
T 047	4.521452656	100.930510255
T 048	4.521921686	100.930154688

PROPOSED POLE COORDINATE		
POLE NUMBER	LATITUDE	LONGITUDE
T 049	4.521807313	100.930045893
T 050	4.521664263	100.929924947
T 051	4.521504594	100.929784078
T 052	4.524074728	100.931851553
T 053	4.523991907	100.931994480
T 054	4.523825023	100.932155243
T 055	4.523682830	100.932290739
T 056	4.526498716	100.932779857
T 057	4.526491880	100.932961006
T 058	4.526479895	100.933079431
T 059	4.526462549	100.933214082
T 060	4.526454373	100.933417567
T 061	4.526432869	100.933550219
T 062	4.526265149	100.933581852
T 063	4.526094141	100.933564377
T 064	4.525924215	100.933537616
T 065	4.529176005	100.932858998
T 066	4.529415863	100.932736961
T 067	4.529580986	100.932634909
T 068	4.529751313	100.932524069
T 069	4.529952107	100.932395897
T 070	4.530155660	100.932274665
T 071	4.530313220	100.932161799
T 072	4.530506734	100.932041253
T 073	4.530673130	100.931914898
T 074	4.530842474	100.931807901
T 075	4.531039364	100.931674130
T 076	4.531179103	100.931513500
T 077	4.531317929	100.931315541
T 078	4.531421687	100.931174171
T 079	4.531484971	100.931071540
T 080	4.531612645	100.930841069
T 081	4.531707291	100.930680020
T 082	4.531768521	100.930546750
T 083	4.531858855	100.930411800
T 084	4.531927148	100.930281867
T 085	4.531992986	100.930167615
T 086	4.532058815	100.930053337
T 087	4.532134186	100.929919875
T 088	4.532191071	100.929809271
T 089	4.532244269	100.929706080
T 090	4.532314352	100.929597286
T 091	4.532374790	100.929479549
T 092	4.532433717	100.929372021
T 093	4.532492545	100.929268141
T 094	4.532542997	100.929181116
T 095	4.532609050	100.929077004
T 096	4.532658073	100.928985729
T 097	4.532705662	100.928900889
T 098	4.531537628	100.931001935
T 099	4.531632970	100.931127334

PROPOSED POLE COORDINATE		
POLE NUMBER	LATITUDE	LONGITUDE
T 100	4.531710575	100.931273324
T 101	4.531734997	100.931388999
T 102	4.531770250	100.931518001
T 103	4.531811074	100.931651094
T 104	4.531848169	100.931746803
T 105	4.531900322	100.931878346

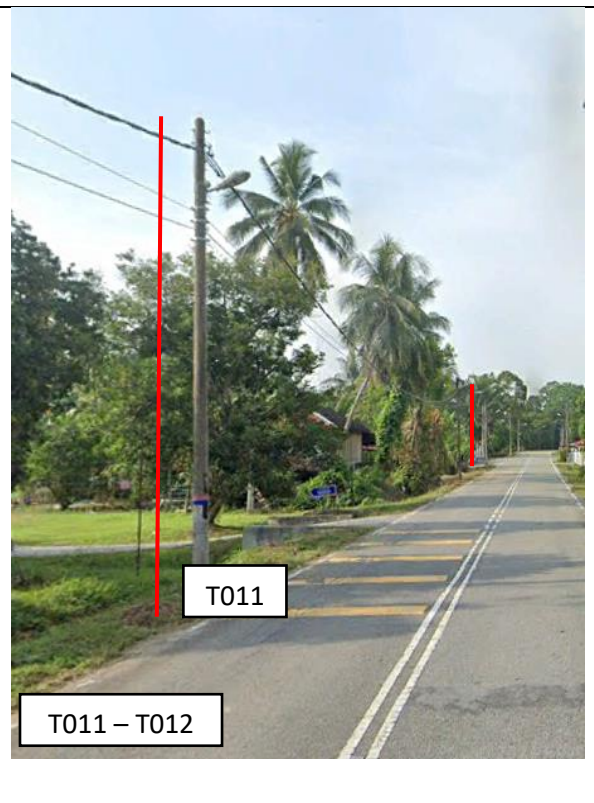
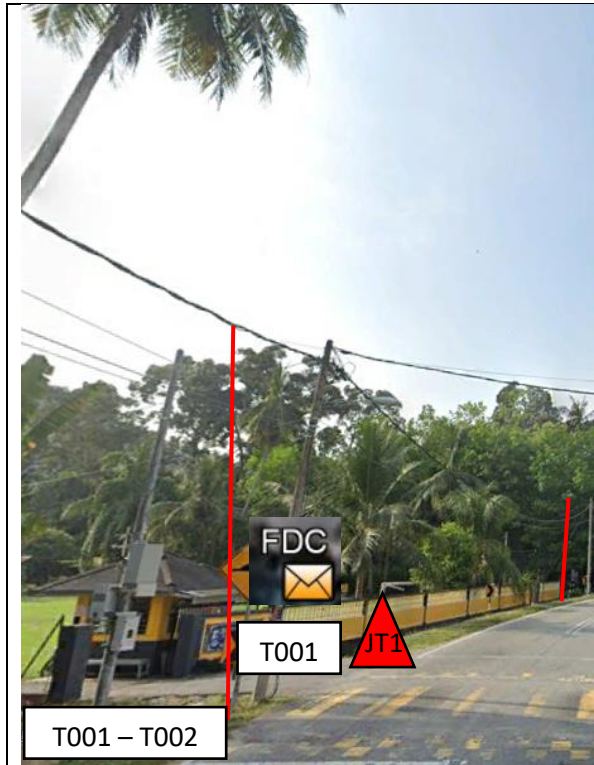
### Overall Manhole & Pole (Propose New & Existing)

No.	Pole & Manhole ID	Distance (m)	Latitude	Longitude	Local Authority
1	T 001	0	4.529014874	100.932934478	JKR
2	T 002	34	4.528720847	100.933003729	JKR
3	T 003	27	4.528482096	100.933029390	JKR
4	T 004	18	4.528318011	100.933044044	JKR
5	T 005	21	4.528132816	100.933038638	JKR
6	T 006	22	4.527933597	100.933024647	JKR
7	T 007	22	4.527735005	100.932995658	JKR
8	T 008	19	4.527563415	100.932965637	JKR
9	T 009	21	4.527375708	100.932936179	JKR
10	T 010	24	4.527166013	100.932886596	JKR
11	T 011	23	4.526964616	100.932840179	JKR
12	T 012	25	4.526740822	100.932800167	JKR
13	T 013	14	4.526612854	100.932789020	JKR
14	T 014	32	4.526216572	100.932728130	JKR
15	T 015	26	4.525986734	100.932680743	JKR
16	T 016	20	4.525816567	100.932633159	JKR
17	T 017	20	4.525642362	100.932592395	JKR
18	T 018	26	4.525419221	100.932531702	JKR
19	T 019	23	4.525226406	100.932468258	JKR
20	T 020	29	4.524981073	100.932369677	JKR
21	T 021	23	4.524798119	100.932265564	JKR
22	T 022	24	4.524606907	100.932165688	JKR
23	T 023	25	4.524417084	100.932050784	JKR
24	T 024	21	4.524247296	100.931958304	JKR
25	T 025	15	4.523964357	100.931777782	JKR
26	T 026	18	4.523827062	100.931696688	JKR
27	T 027	24	4.523649430	100.931580781	JKR
28	T 028	22	4.523492200	100.931466262	JKR
29	T 029	20	4.523345645	100.931360295	JKR
30	T 030	22	4.523187652	100.931243963	JKR
31	T 031	19	4.523048156	100.931145355	JKR
32	T 032	17	4.522934884	100.931043012	JKR
33	T 033	26	4.522748093	100.930898209	JKR
34	T 034	22	4.522599910	100.930761682	JKR
35	T 035	19	4.522472376	100.930649097	JKR
36	T 036	18	4.522354129	100.930536550	JKR
37	T 037	19	4.522227493	100.930416843	JKR
38	T 038	13	4.522138106	100.930346871	JKR
39	T 039	14	4.522043589	100.930267725	Majlis Daerah
40	T 040	15	4.521964493	100.930371920	Majlis Daerah
41	T 041	14	4.521903617	100.930480467	Majlis Daerah
42	T 042	13	4.521860420	100.930590651	Majlis Daerah
43	T 043	11	4.521815659	100.930682920	Majlis Daerah
44	T 044	10	4.521731169	100.930697451	Majlis Daerah
45	T 045	12	4.521633263	100.930652455	Majlis Daerah
46	T 046	13	4.521542090	100.930585603	Majlis Daerah
47	T 047	13	4.521452656	100.930510255	Majlis Daerah
48	T 039 - T 048	18	4.521921686	100.930154688	JKR
49	T 049	18	4.521807313	100.930045893	JKR

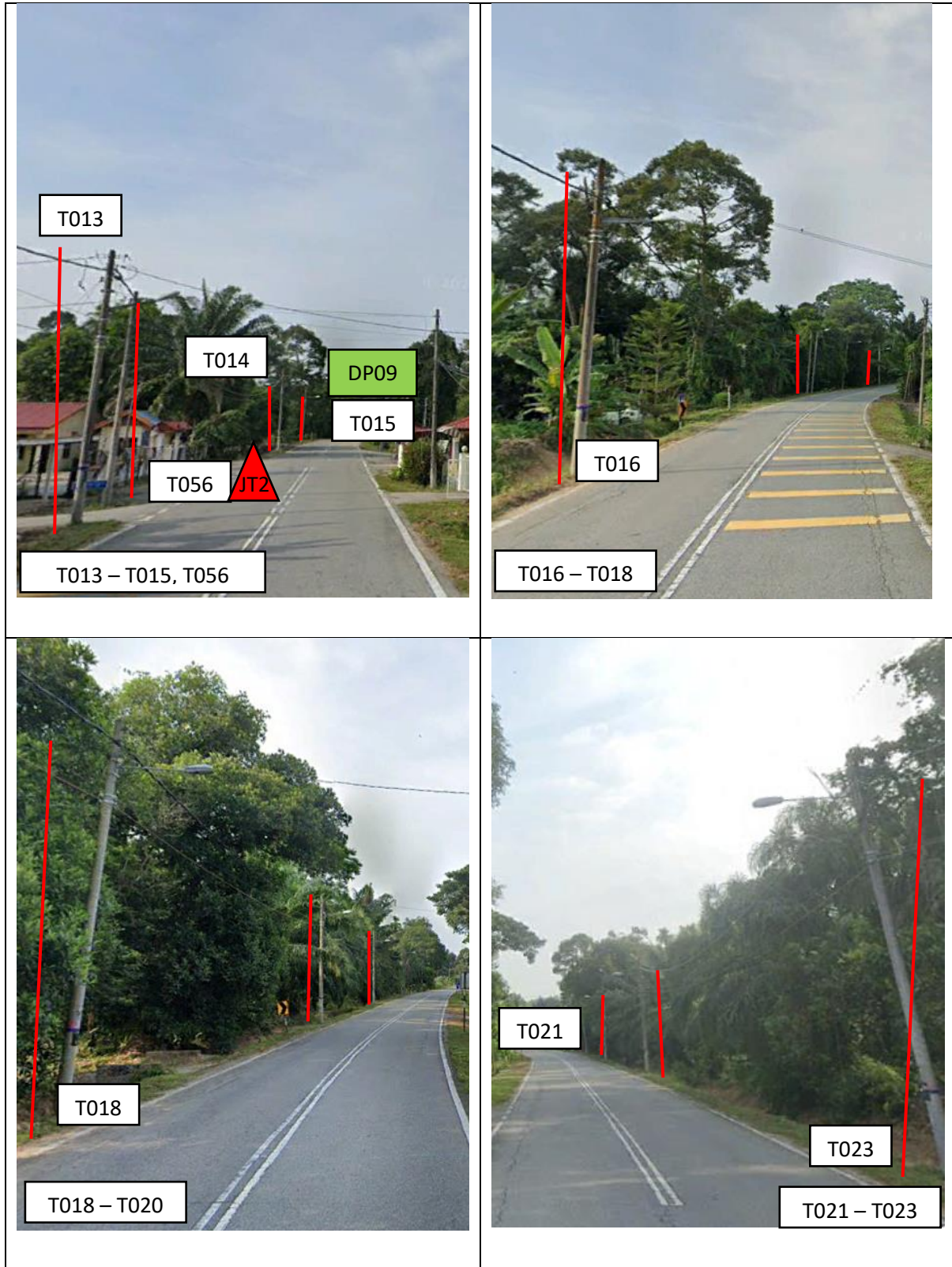
No.	Pole & Manhole ID	Distance (m)	Latitude	Longitude	Local Authority
50	T 050	21	4.521664263	100.929924947	JKR
51	T 051	24	4.521504594	100.929784078	JKR
52	T 024 - T 052	23	4.524074728	100.931851553	Majlis Daerah
53	T 053	18	4.523991907	100.931994480	Majlis Daerah
54	T 054	26	4.523825023	100.932155243	Majlis Daerah
55	T 055	22	4.523682830	100.932290739	Majlis Daerah
56	T 13 - T 056	13	4.526498716	100.932779857	Majlis Daerah
57	T 057	20	4.526491880	100.932961006	Majlis Daerah
58	T 058	13	4.526479895	100.933079431	Majlis Daerah
59	T 059	15	4.526462549	100.933214082	Majlis Daerah
60	T 060	23	4.526454373	100.933417567	Majlis Daerah
61	T 061	15	4.526432869	100.933550219	Majlis Daerah
62	T 062	19	4.526265149	100.933581852	Majlis Daerah
63	T 063	19	4.526094141	100.933564377	Majlis Daerah
64	T 064	19	4.525924215	100.933537616	Majlis Daerah
65	T 001 - T 065	20	4.529176005	100.932858998	JKR
66	T 066	30	4.529415863	100.932736961	JKR
67	T 067	22	4.529580986	100.932634909	JKR
68	T 068	23	4.529751313	100.932524069	JKR
69	T 069	26	4.529952107	100.932395897	JKR
70	T 070	26	4.530155660	100.932274665	JKR
71	T 071	22	4.530313220	100.932161799	JKR
72	T 072	25	4.530506734	100.932041253	JKR
73	T 073	23	4.530673130	100.931914898	JKR
74	T 074	22	4.530842474	100.931807901	JKR
75	T 075	26	4.531039364	100.931674130	JKR
76	T 076	24	4.531179103	100.931513500	JKR
77	T 077	27	4.531317929	100.931315541	JKR
78	T 078	19	4.531421687	100.931174171	JKR
79	T 079	13	4.531484971	100.931071540	JKR
80	T -098 - T 080	20	4.531612645	100.930841069	JKR
81	T 081	21	4.531707291	100.930680020	JKR
82	T 082	16	4.531768521	100.930546750	JKR
83	T 083	18	4.531858855	100.930411800	JKR
84	T 084	16	4.531927148	100.930281867	JKR
85	T 085	15	4.531992986	100.930167615	JKR
86	T 086	15	4.532058815	100.930053337	JKR
87	T 087	17	4.532134186	100.929919875	JKR
88	T 088	14	4.532191071	100.929809271	JKR
89	T 089	13	4.532244269	100.929706080	JKR
90	T 090	14	4.532314352	100.929597286	JKR
91	T 091	15	4.532374790	100.929479549	JKR
92	T 092	14	4.532433717	100.929372021	JKR
93	T 093	13	4.532492545	100.929268141	JKR
94	T 094	11	4.532542997	100.929181116	JKR
95	T 095	14	4.532609050	100.929077004	JKR
96	T 096	11	4.532658073	100.928985729	JKR
97	T 097	11	4.532705662	100.928900889	JKR
98	T 079 - T 098	10	4.531537628	100.931001935	Majlis Daerah
99	T 099	17	4.531632970	100.931127334	Majlis Daerah
100	T 100	18	4.531710575	100.931273324	Majlis Daerah
101	T 101	13	4.531734997	100.931388999	Majlis Daerah

No.	Pole & Manhole ID	Distance (m)	Latitude	Longitude	Local Authority
102	T 102	15	4.531770250	100.931518001	Majlis Daerah
103	T 103	15	4.531811074	100.931651094	Majlis Daerah
104	T 104	11	4.531848169	100.931746803	Majlis Daerah
105	T 105	16	4.531900322	100.931878346	Majlis Daerah

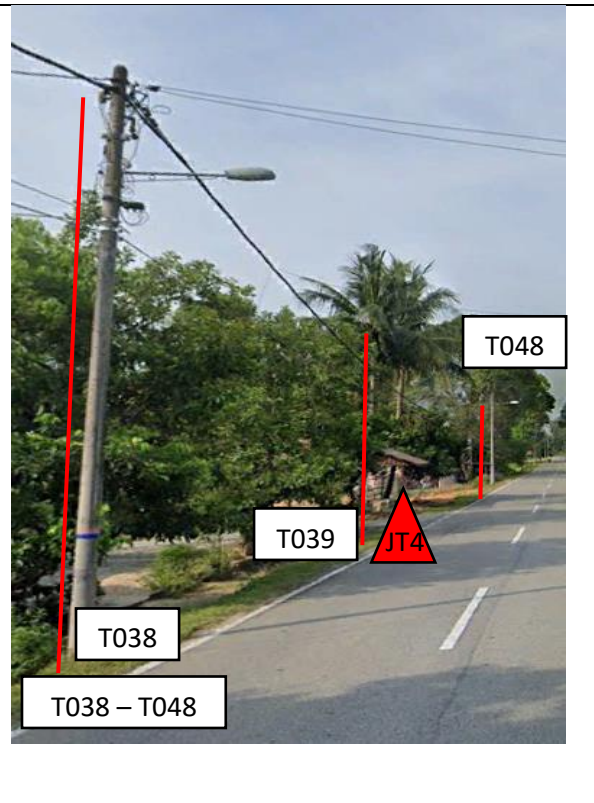
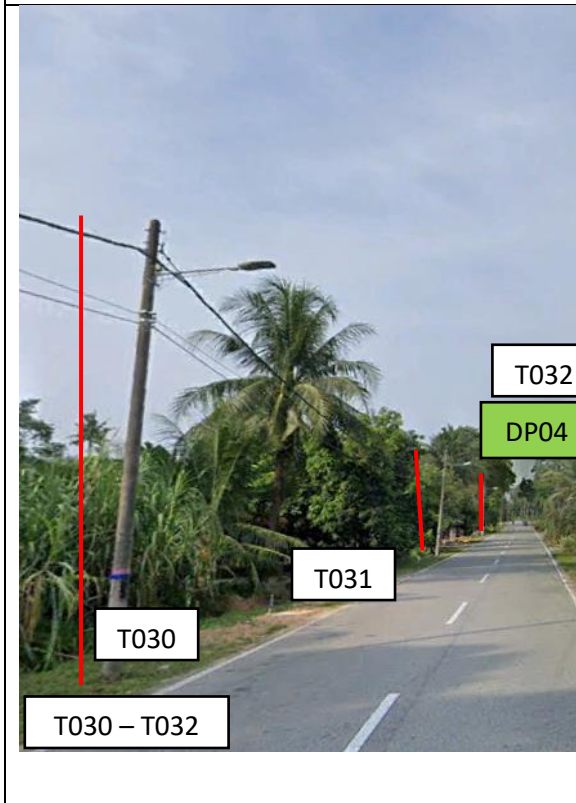
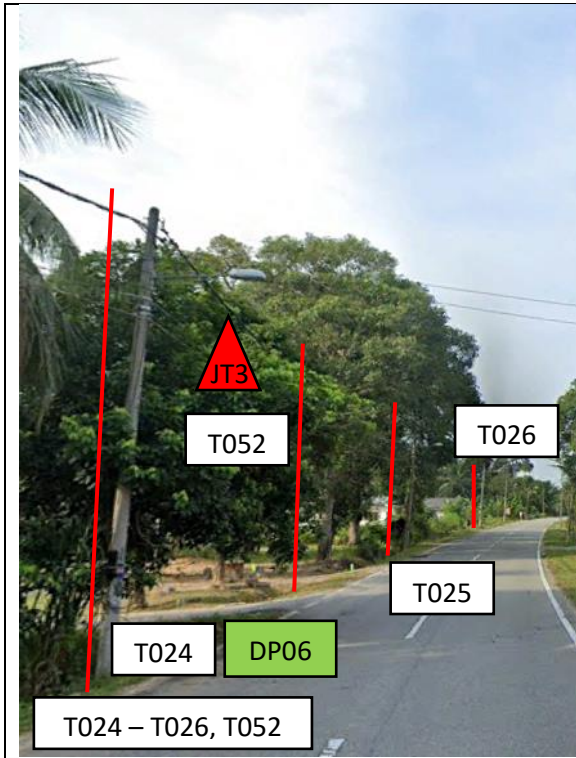
### Site Photos – Proposed Pole 7.5m



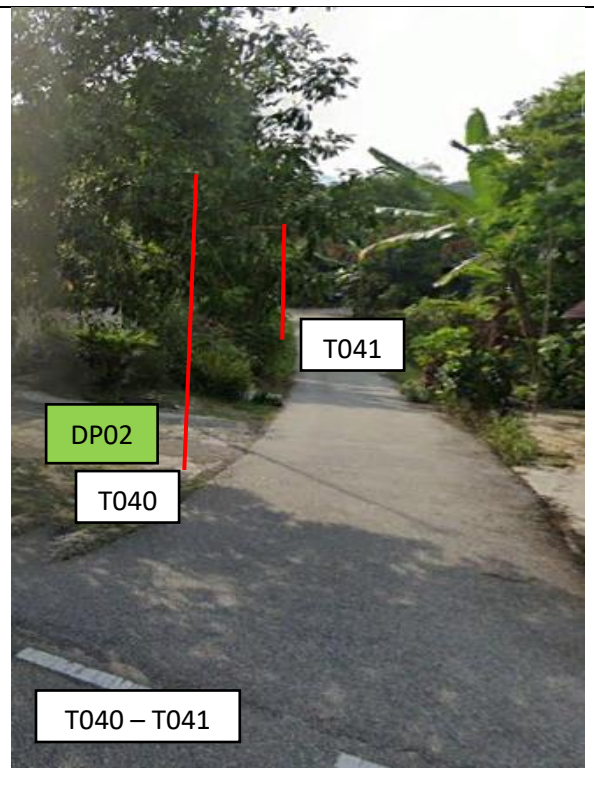
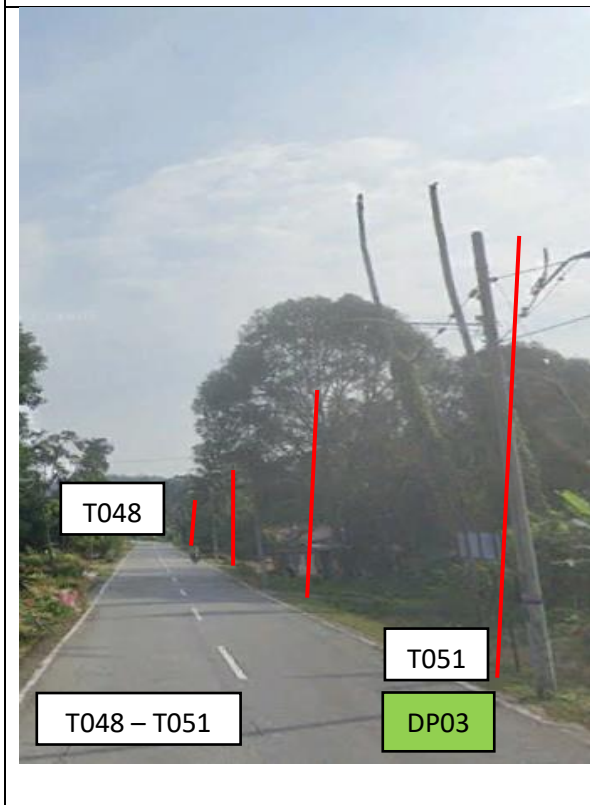
**Site Photos – Proposed Pole 7.5m**



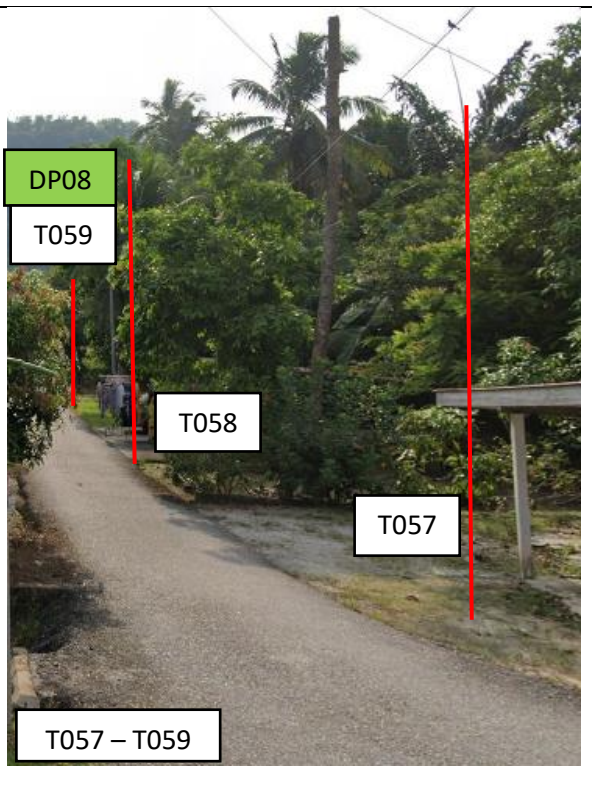
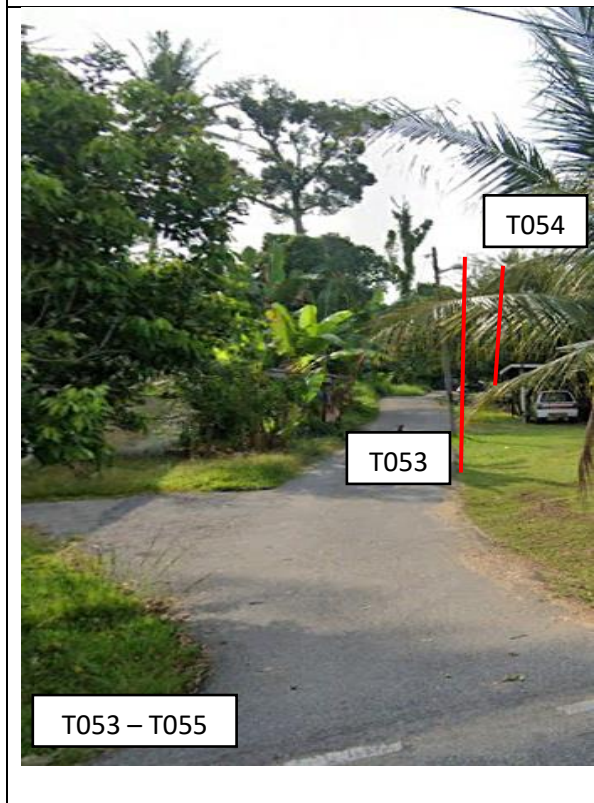
**Site Photos – Proposed Pole 7.5m**



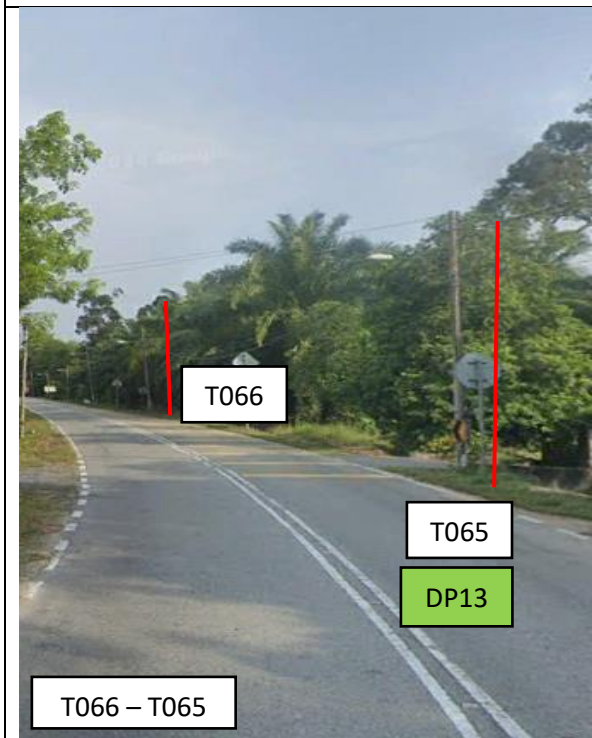
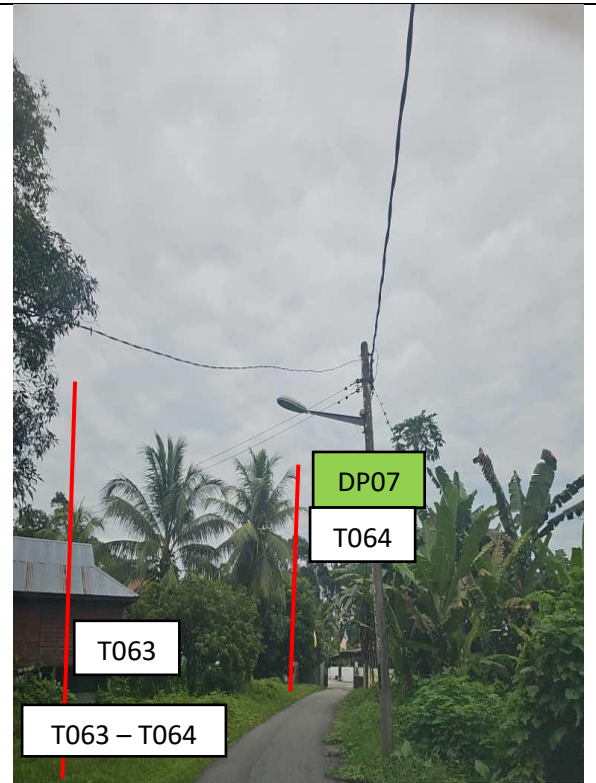
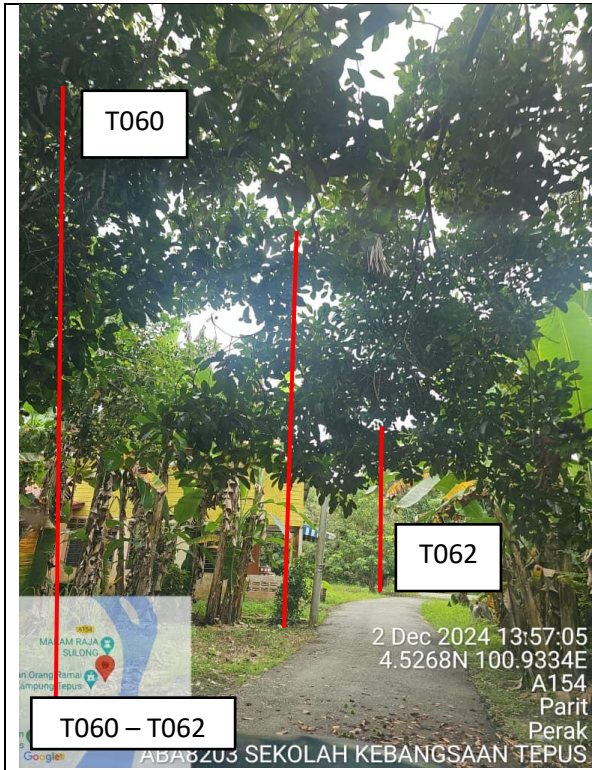
**Site Photos – Proposed Pole 7.5m**



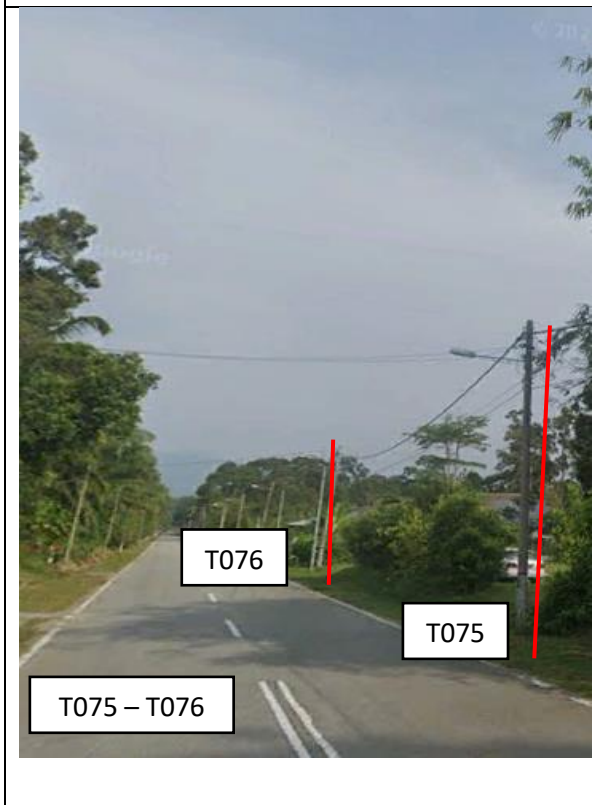
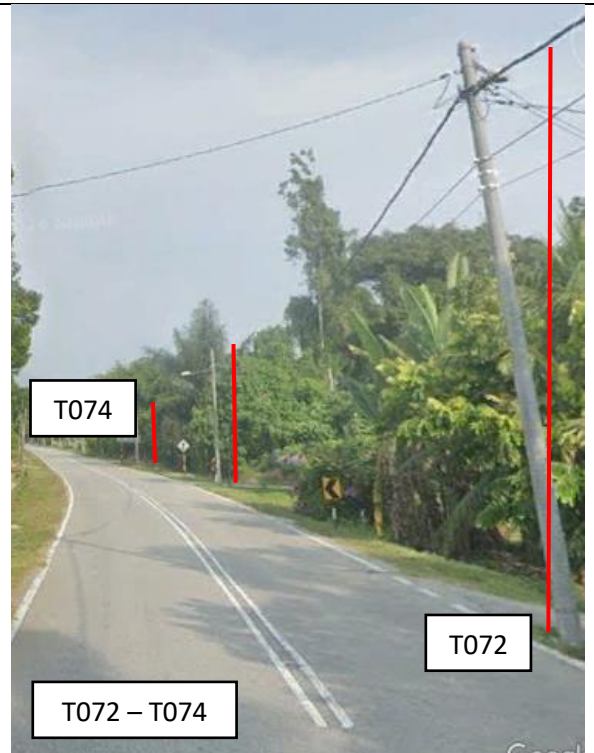
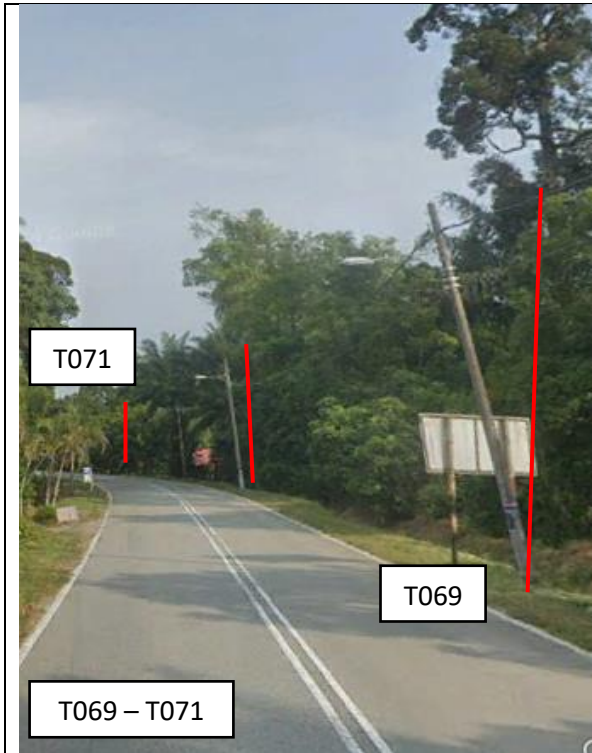
**Site Photos – Proposed Pole 7.5m**



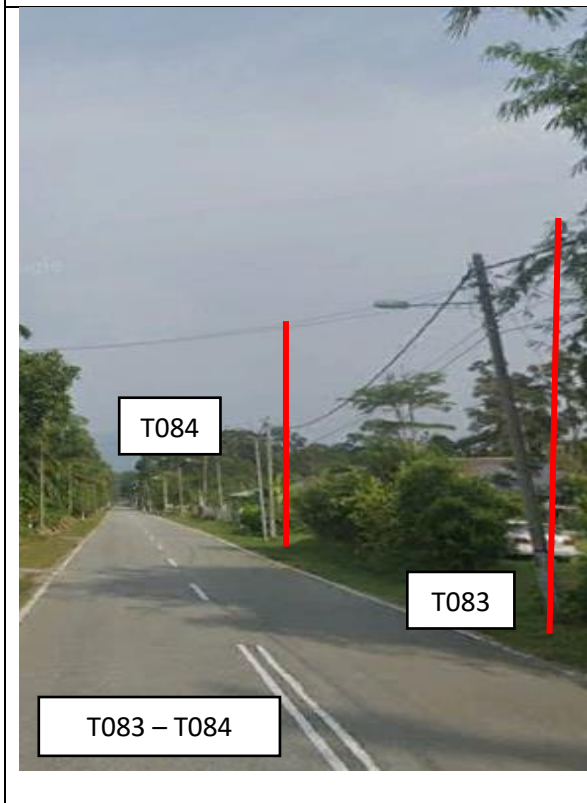
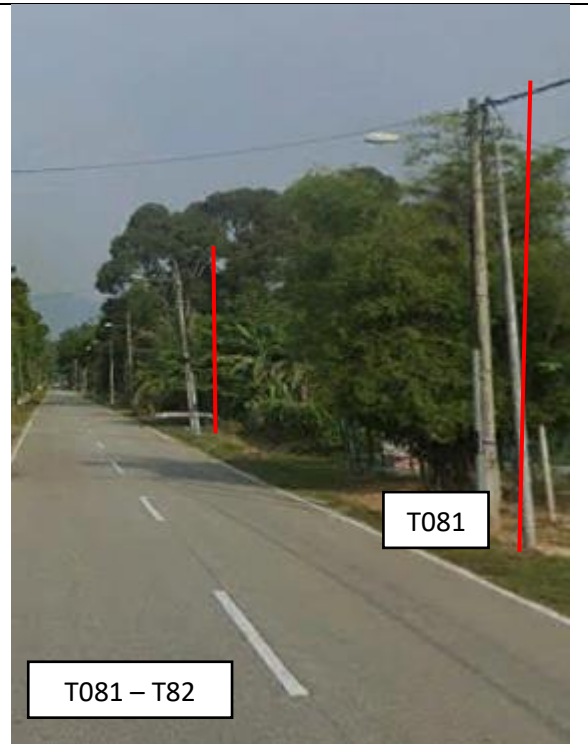
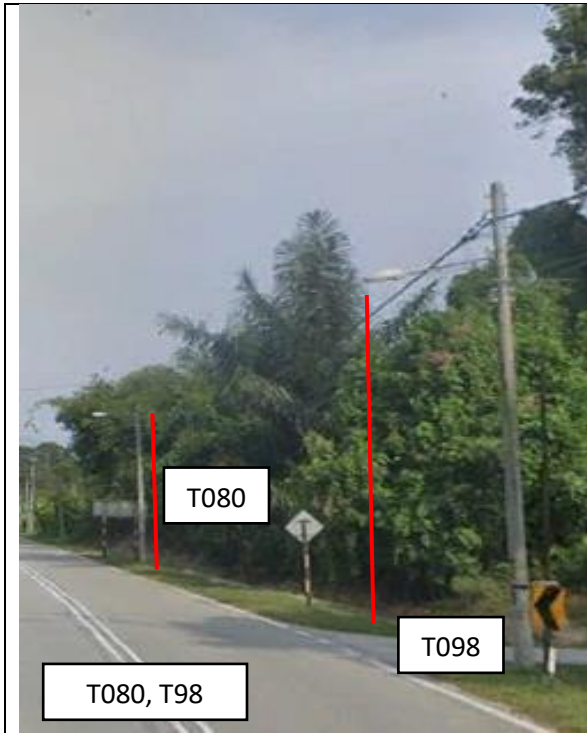
**Site Photos – Proposed Pole 7.5m**



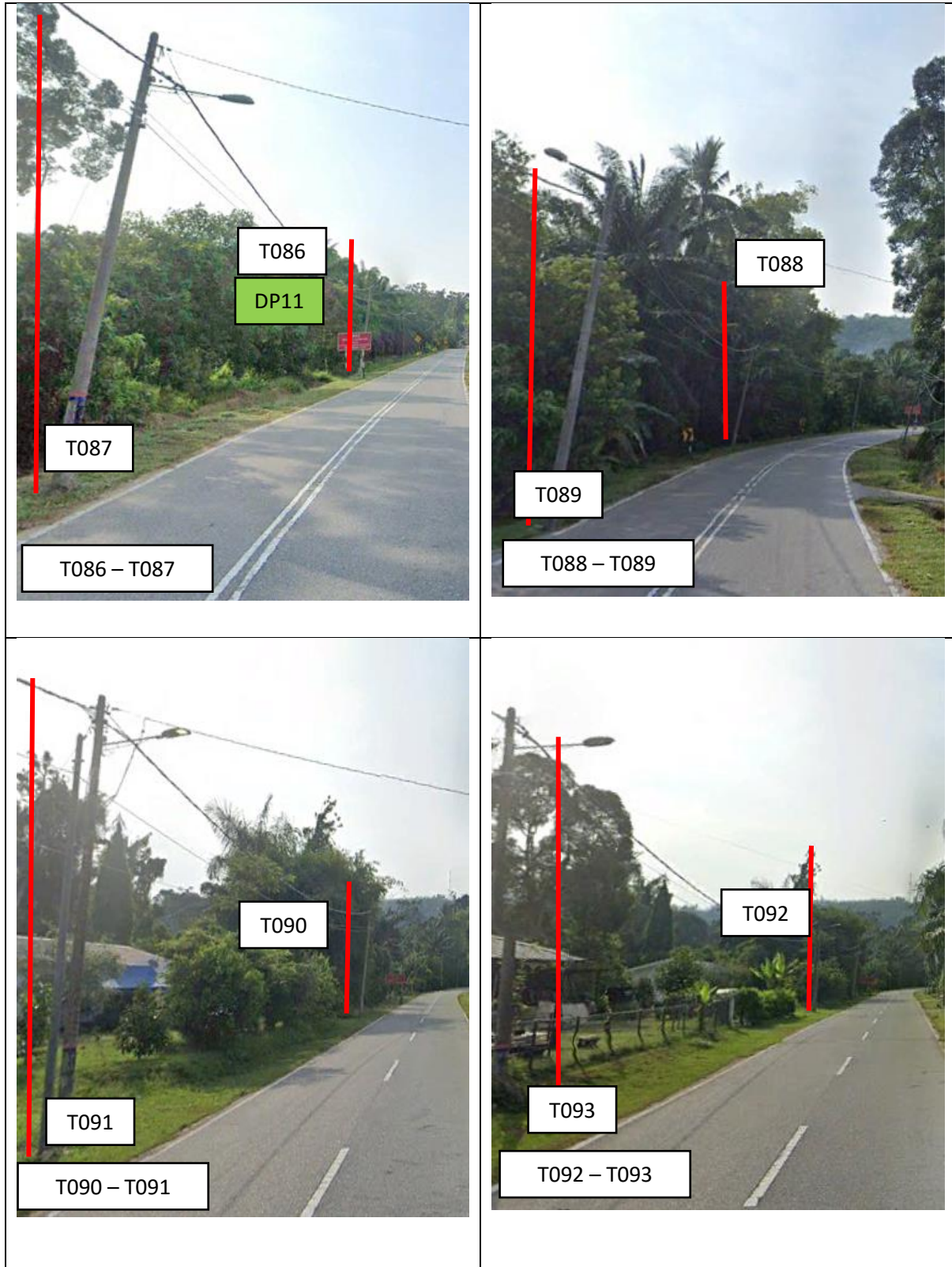
### Site Photos – Proposed Pole 7.5m



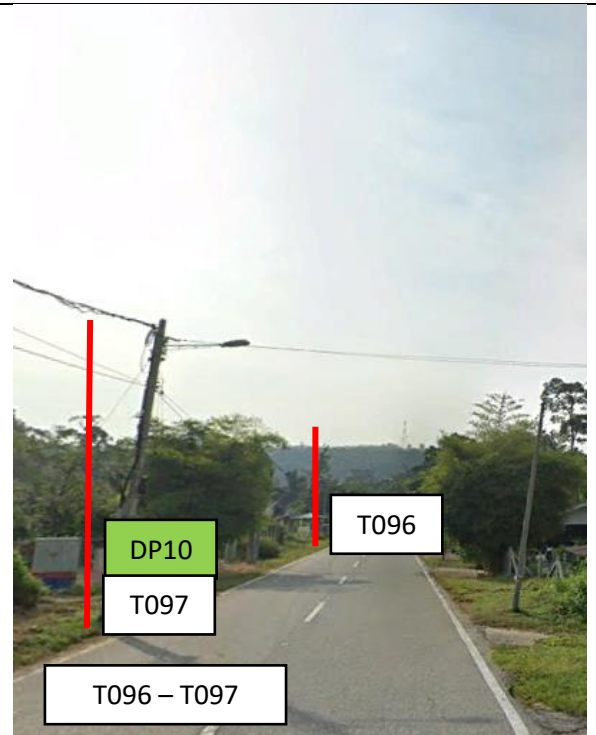
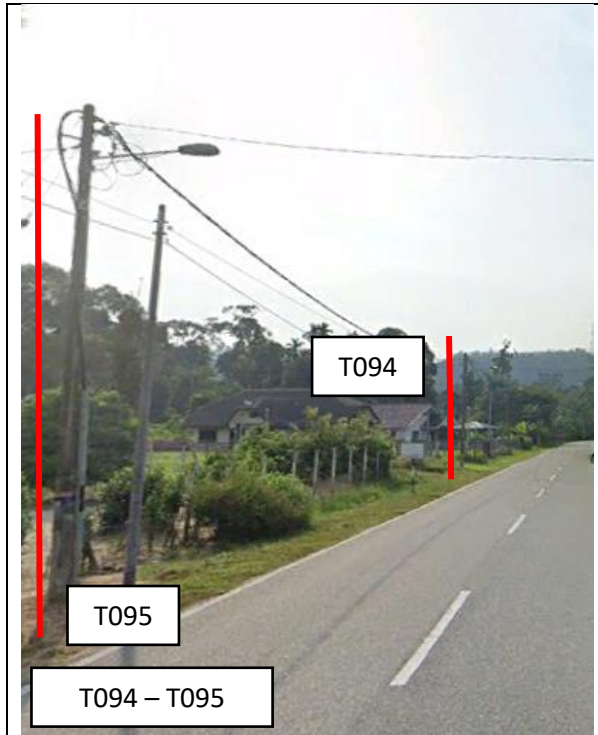
**Site Photos – Proposed Pole 7.5m**



### Site Photos – Proposed Pole 7.5m



**Site Photos – Proposed Pole 7.5m**



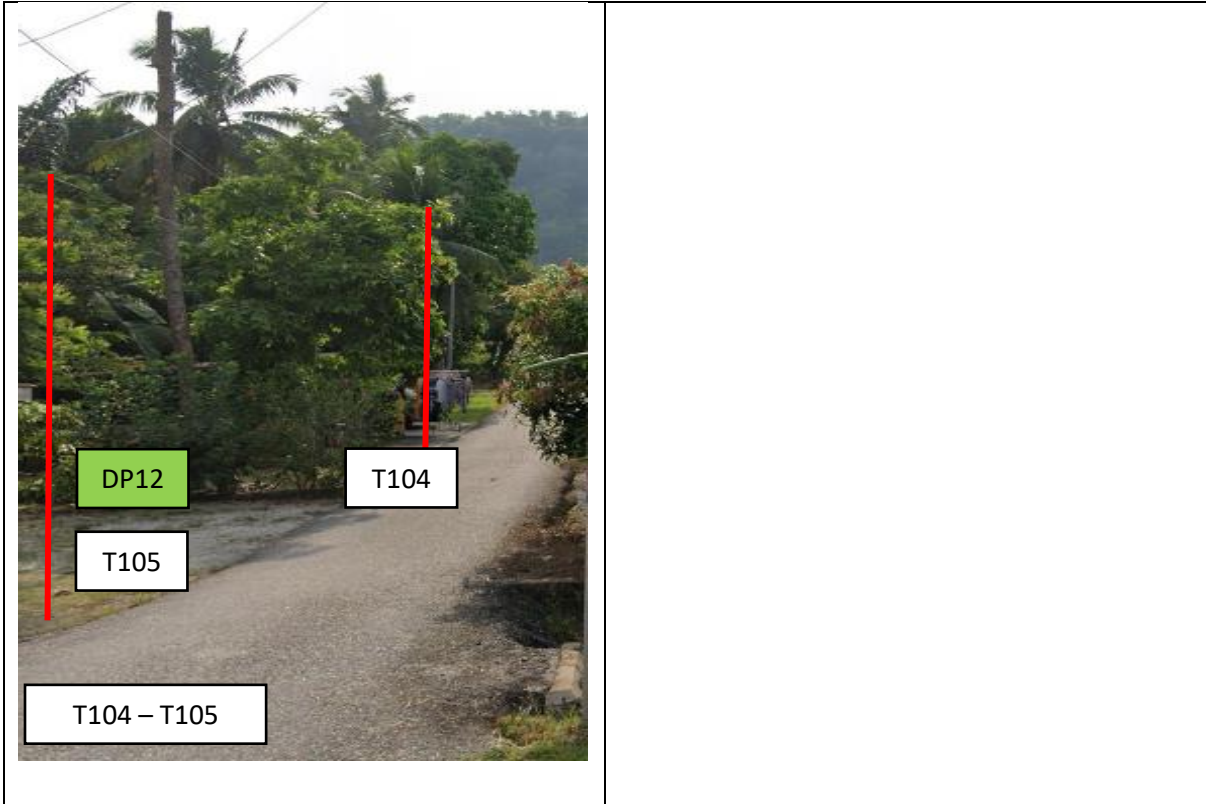
T099

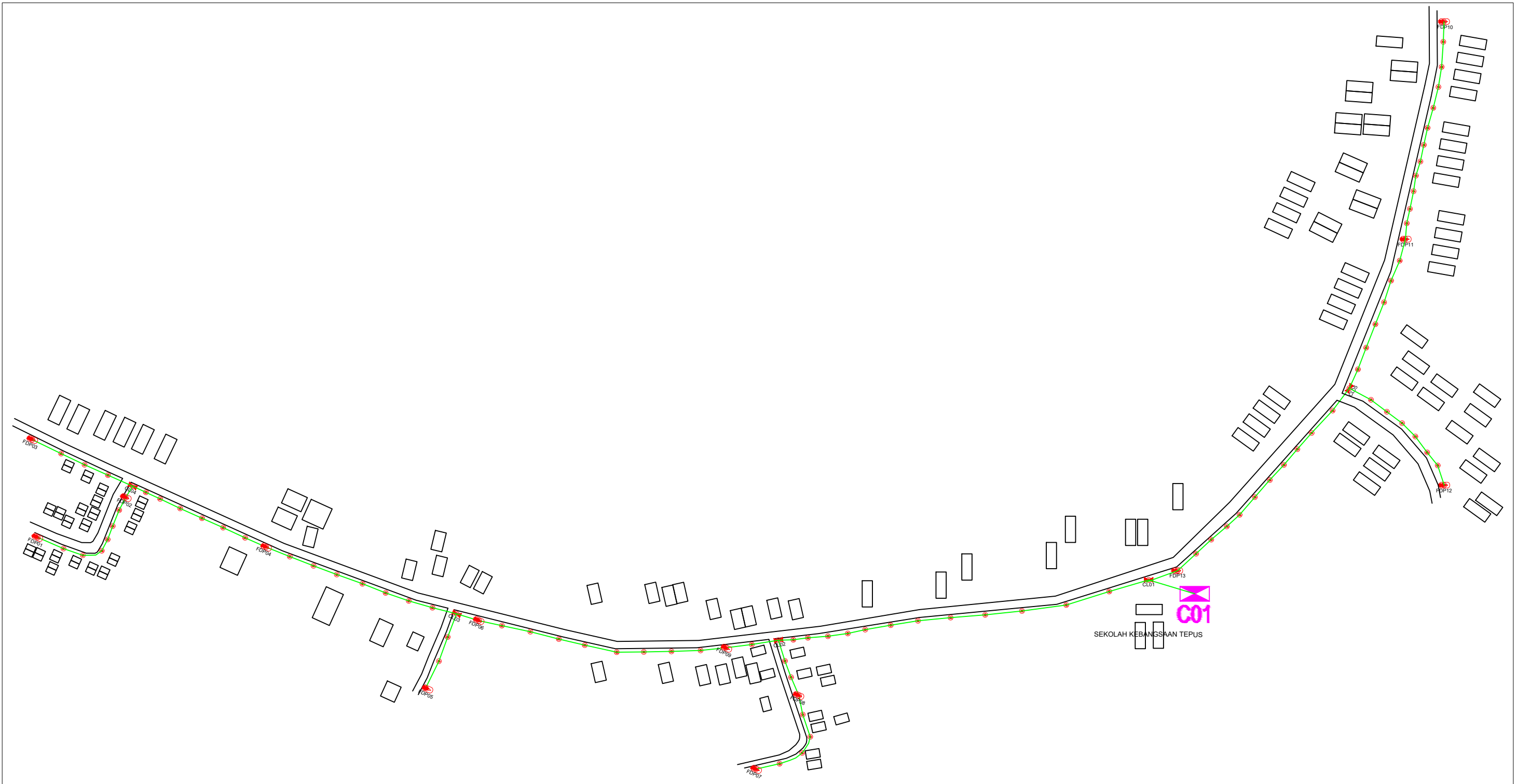


PROJEK PENYEDIAAN DAN PENYELENGGARAAN POINT OF PRESENCE (POP)  
FASA 2 : HAB INFRASTRUKTUR GENTIAN OPTIK BERHAMPIRAN DENGAN  
SEKOLAH, KAWASAN PERINDUSTRIAN, PREMIS KERAJAAN DAN KOMUNITI  
SEKITARNYA OLEH KEMENTERIAN KOMUNIKASI MALAYSIA – ZON UTARA  
(KKMM.400-11/17/132(1))



### Site Photos – Proposed Pole 7.5m





<p>KEY PLAN:</p>	<p>PROJECT OWNER:</p> <p>APEX COMMUNICATION SDN BHD 12th Floor, Menara Hap Seng, 50250 Jalan P. Ramlee, Kuala Lumpur, MALAYSIA Phone: +603 - 2148 8810 Fax: +603 - 2142 6003 / 2148 0966 Email: corporate@apex.com.my</p>	<p>MAIN CONTRACTOR:</p> <p>WCWL COMMUNICATION SDN BHD 127, Jalan PUJ 3/3, Taman Puncak Jalil Bandar Putra Permai, 43300 Seri Kembangan, Selangor Phone: +603 5888 5983 Email: info@wcwlcommunications.com.my</p>	<p>SUB-CONTRACTOR:</p>	<p>PROJECT TITLE:</p> <p>DRAWING ABA8203 SEKOLAH KEBANGSAAN TEPUS</p> <p>CONSTRUCTION FOR SURVEY TECHNICAL PROPOSAL WAYLEAVE AND PERMIT APPROVAL FOR POP 2 PROJECTS</p>	<p>DRAWING TITLE:</p> <p>DRAWING ABA8203 SEKOLAH KEBANGSAAN TEPUS ASBUILT SITE PLANNING DRAWING ABA 8203 SEKOLAH KEBANGSAAN TEPUS</p> <p>PROJECT PHASE: POP 2</p>	<p>Design By : (Contractor)      Date : 25-12-2024</p> <p>Drawn By : (Contractor)      Scale :</p> <p>Checked By :      Job Number :</p> <p>DRAWING NUMBER : ABA 8203 -01-CD      Sheet : 1 / 1</p> <p>THIS PRINT AND ITS COPYRIGHT ARE THE PROPERTY OF</p>
------------------	---	--	------------------------	---	---	---

ACTUAL HOMEPASS :

Size : A3