

TECHNICAL PROPOSAL

POP2 ABA7031 SEKOLAH KEBANGSAAN (FELDA) PAPULUT (D-SIDE)

Company Name : WabTech Sdn Bhd
Company Address : 101-1, Jalan Metro Sendayan, 71950 Seremban, Negeri Sembilan.
Prepared By : Sharifful Bahrin bin Che Meh
Date : 13/1/2025



Point A



Point B

Starting Point

Site / Boundary Name : Sekolah Kebangsaan (Felda) Papulut
Address : Jalan Kaloi, Felda Papulut, 33300 Gerik, Perak
District : Gerik
Postcode : 33300
State : Perak
GPS Coordinate : 5.310082, 101.079167
LRD : A

End Point

Site / Boundary Name : Jalan Toman
Address : Jalan Toman, Felda Papulut, 33300 Gerik, Perak
District : Gerik
Postcode : 33300
State : Perak
GPS Coordinate : 5.298346, 101.080814
LRD : B



PROJEK PENYEDIAAN DAN PENYELENGGARAAN POINT OF PRESENCE (POP)
FASA 2: HAB INFRASTRUTUK GENTIAN OPTIK BERHAMPIRAN DENGAN
SEKOLAH, KAWASAN PERINDUSTRIAN, PREMIS KERAJAAN DAN KOMUNITI
SEKITARNYA OLEH KEMENTERIAN KOMUNIKASI MALAYSIA – ZON UTARA
(KKMM.400-11/17/132(1))



WRBTECH SDN BHD
ESTABLISHED 2011

1.0 WORK SUMMARY

NO	PROPOSED DISTANCE AND METHOD	UNIT	QUANTITY
1	Horizontal Directional Drilling (HDD)	m	0
2	Carriage Way Open Trench (CW)	m	0
3	Grass Verge Open Trenching (GV)	m	0
4	Micro Trenching (MT)	m	0
Total			

NO	OTHER INFORMATION	UNIT	QUANTITY
1	Installation of Short Span ADSS Fibre Cables	m	4436
2	Install New Pole	ea	90
3	Install New JRC7 Manhole	ea	0
4	Install GI Riser 100mm	ea	0
5	Install Fiber Distribution Point and Closure (Splicing, Termination and Testing)	ea	17
6	Estimated Time Required for Completion	days	30



PROJEK PENYEDIAAN DAN PENYELENGGARAAN POINT OF PRESENCE (POP)
FASA 2: HAB INFRASTRUTUK GENTIAN OPTIK BERHAMPIRAN DENGAN
SEKOLAH, KAWASAN PERINDUSTRIAN, PREMIS KERAJAAN DAN KOMUNITI
SEKITARNYA OLEH KEMENTERIAN KOMUNIKASI MALAYSIA – ZON UTARA
(KKMM.400-11/17/132(1))



WABTECH SDN BHD
1508087-X

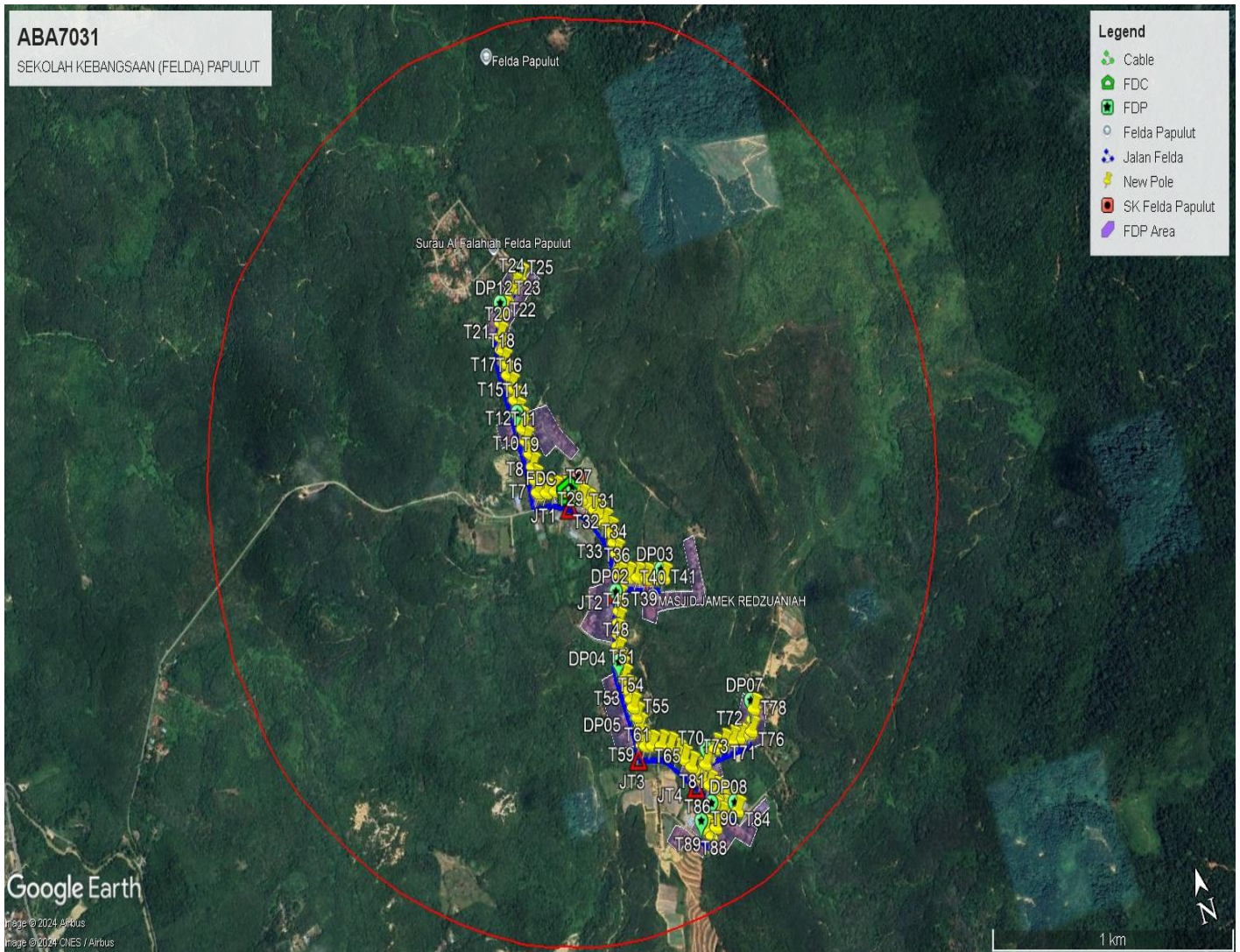
2.0 LOCAL AUTHORITY SUMMARY

Daerah Gerik

NO	ITEMS	Owner	Quantity	Distance (m)
1	HDD	JKR	-	-
		Felda	-	-
		PDT	-	-
2	New Pole	JKR	-	-
		Felda	90	3302
		PDT	-	-
Total Distance (m)				3302

3.0 SITE PLAN (KMZ)

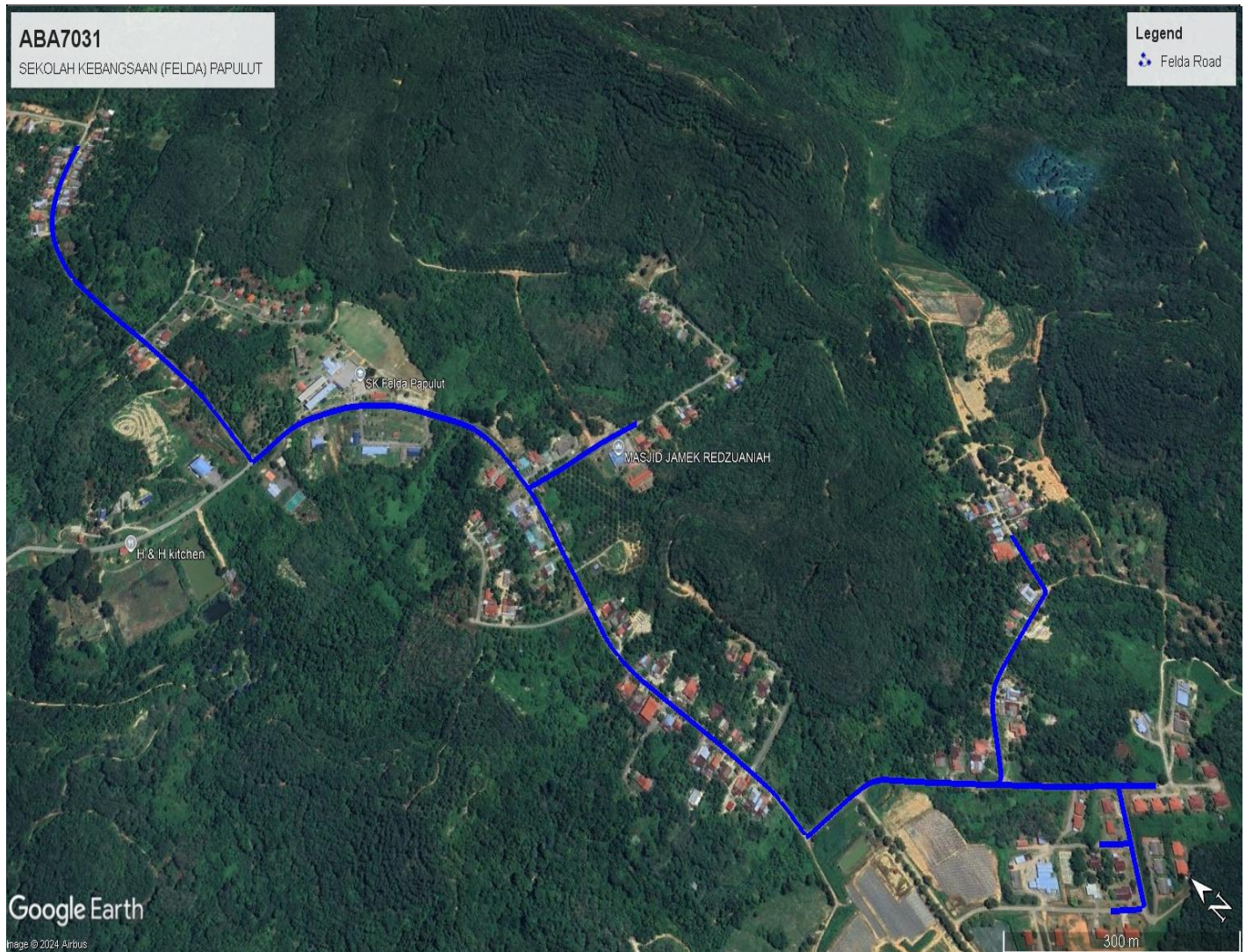
3.1 Overview Site Area



3.2 Site boundary



3.3 Road Boundary



4.0 PROPOSED NEW POLE

Proposed New Pole Coordinate					
No.	Pole Number	Distance (m)	Latitude	Longitude	Local Authority
1	FDC POLE	11	5.196209	101.055669	Felda Papulut
2	T001	11	5.310082	101.079167	Felda Papulut
3	T002	11	5.196209	101.055669	Felda Papulut
4	T003	40	5.310302	101.078769	Felda Papulut
5	T004	41	5.310442	101.078426	Felda Papulut
6	T005	41	5.310507	101.078064	Felda Papulut
7	T006	39	5.310549	101.077713	Felda Papulut
8	T007	40	5.310913	101.077736	Felda Papulut
9	T008	41	5.311278	101.077773	Felda Papulut
10	T009	40	5.311641	101.077804	Felda Papulut
11	T010	40	5.312005	101.077818	Felda Papulut
12	T011	41	5.312380	101.077799	Felda Papulut
13	T012	28	5.312746	101.077792	Felda Papulut
14	T013	31	5.313004	101.077777	Felda Papulut
15	T014	32	5.313290	101.077764	Felda Papulut
16	T015	48	5.313716	101.077764	Felda Papulut
17	T016	48	5.314145	101.077756	Felda Papulut
18	T017	46	5.314567	101.077739	Felda Papulut
19	T018	46	5.314986	101.077720	Felda Papulut
20	T019	47	5.315417	101.077743	Felda Papulut
21	T020	46	5.315835	101.077831	Felda Papulut
22	T021	46	5.316230	101.077990	Felda Papulut
23	T022	45	5.316572	101.078224	Felda Papulut
24	T023	48	5.316881	101.078527	Felda Papulut
25	T024	46	5.317124	101.078869	Felda Papulut
26	T025	49	5.317343	101.079225	Felda Papulut
27	T026	17	5.309993	101.079295	Felda Papulut
28	T027	14	5.309875	101.079351	Felda Papulut
29	T028	35	5.309651	101.079579	Felda Papulut
30	T029	36	5.309377	101.079760	Felda Papulut
31	T030	25	5.309178	101.079875	Felda Papulut
32	T031	41	5.308843	101.080021	Felda Papulut
33	T032	40	5.308499	101.080136	Felda Papulut
34	T033	39	5.308136	101.080174	Felda Papulut
35	T034	47	5.307712	101.080161	Felda Papulut
36	T035	49	5.307274	101.080081	Felda Papulut
37	T036	29	5.307015	101.080044	Felda Papulut
38	T037	40	5.306908	101.080394	Felda Papulut

39	T038	40	5.306791	101.080740	Felda Papulut
40	T039	41	5.306638	101.081080	Felda Papulut
41	T040	38	5.306528	101.081417	Felda Papulut
42	T041	41	5.306434	101.081777	Felda Papulut
43	T042	41	5.306658	101.079930	Felda Papulut
44	T043	37	5.306350	101.079814	Felda Papulut
45	T044	41	5.305995	101.079691	Felda Papulut
46	T045	41	5.305655	101.079559	Felda Papulut
47	T046	42	5.305307	101.079422	Felda Papulut
48	T047	39	5.304962	101.079298	Felda Papulut
49	T048	23	5.304760	101.079244	Felda Papulut
50	T049	39	5.304407	101.079203	Felda Papulut
51	T050	25	5.304174	101.079204	Felda Papulut
52	T051	34	5.303869	101.079217	Felda Papulut
53	T052	43	5.303478	101.079249	Felda Papulut
54	T053	33	5.303180	101.079269	Felda Papulut
55	T054	31	5.302903	101.079275	Felda Papulut
56	T055	36	5.302574	101.079308	Felda Papulut
57	T056	41	5.302204	101.079310	Felda Papulut
58	T057	42	5.301835	101.079257	Felda Papulut
59	T058	22	5.301636	101.079229	Felda Papulut
60	T059	14	5.301569	101.079352	Felda Papulut
61	T060	31	5.301496	101.079619	Felda Papulut
62	T061	42	5.301392	101.079983	Felda Papulut
63	T062	41	5.301216	101.080300	Felda Papulut
64	T063	42	5.300923	101.080537	Felda Papulut
65	T064	36	5.300664	101.080725	Felda Papulut
66	T065	42	5.300361	101.080942	Felda Papulut
67	T066	42	5.300065	101.081177	Felda Papulut
68	T067	8	5.300057	101.081246	Felda Papulut
69	T068	38	5.300260	101.081513	Felda Papulut
70	T069	31	5.300440	101.081733	Felda Papulut
71	T070	40	5.300616	101.082036	Felda Papulut
72	T071	42	5.300646	101.082411	Felda Papulut
73	T072	39	5.300645	101.082765	Felda Papulut
74	T073	35	5.300633	101.083085	Felda Papulut
75	T074	38	5.300630	101.083436	Felda Papulut
76	T075	14	5.300624	101.083561	Felda Papulut
77	T076	11	5.300681	101.083634	Felda Papulut
78	T077	41	5.301021	101.083789	Felda Papulut
79	T078	37	5.301321	101.083942	Felda Papulut
80	T079	23	5.299862	101.081226	Felda Papulut
81	T080	39	5.299582	101.081445	Felda Papulut
82	T081	38	5.299293	101.081647	Felda Papulut



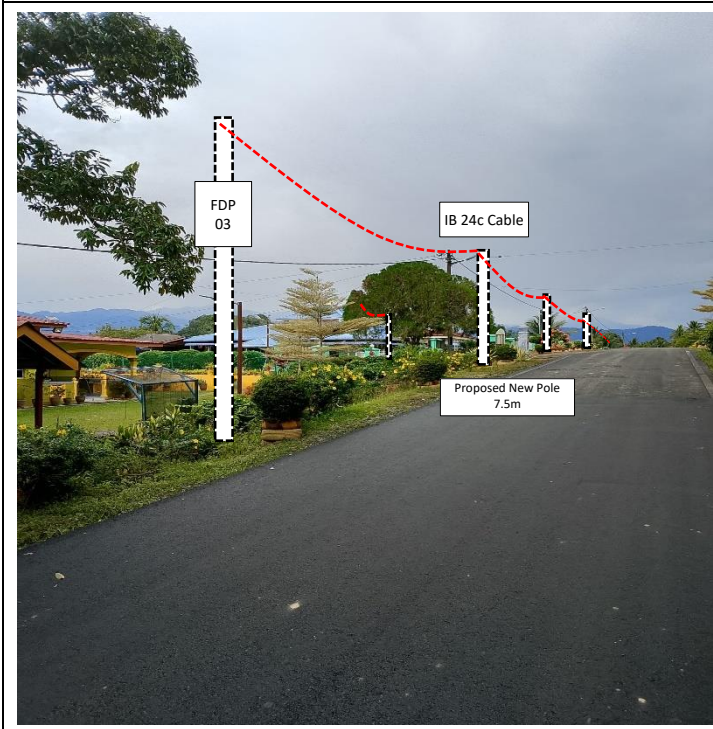
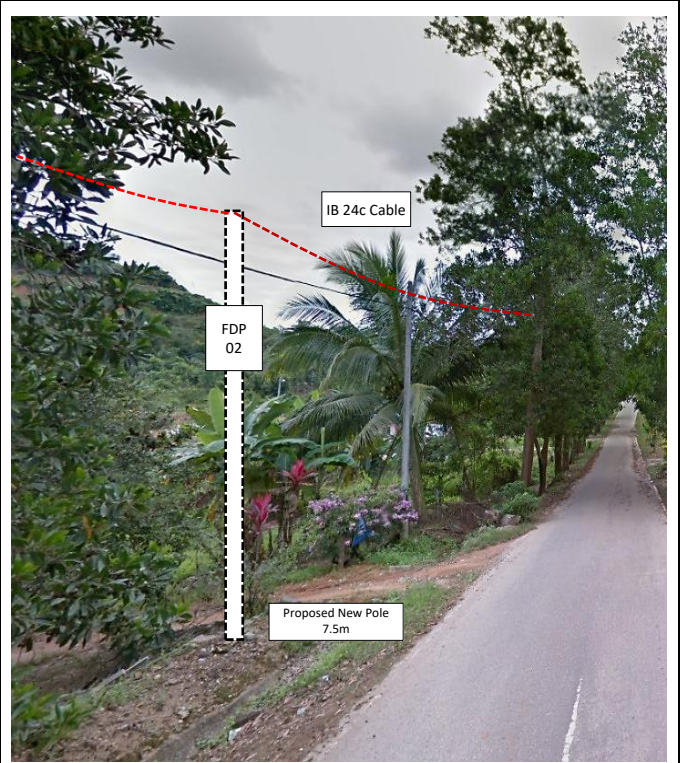
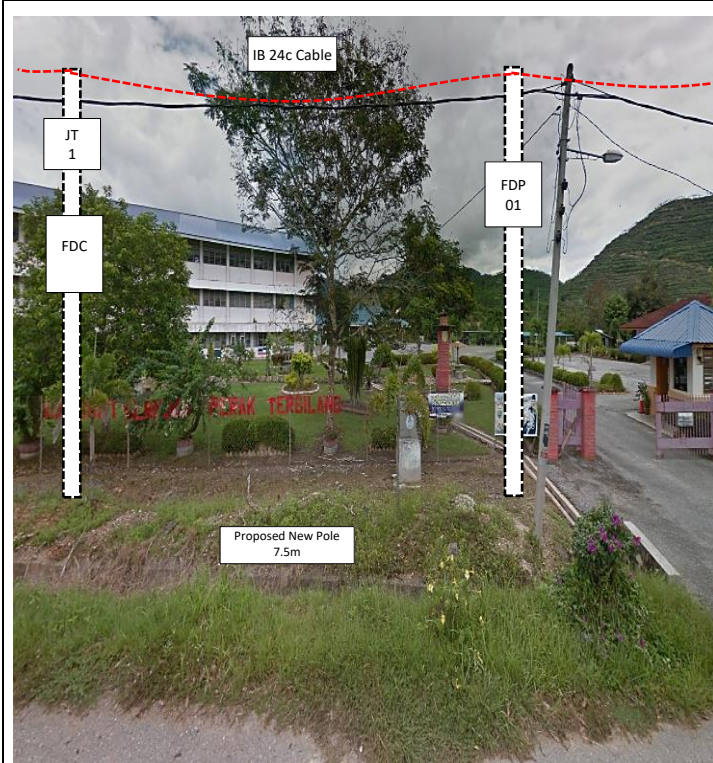
PROJEK PENYEDIAAN DAN PENYELENGGARAAN POINT OF PRESENCE (POP)
FASA 2: HAB INFRASTRUTUK GENTIAN OPTIK BERHAMPIRAN DENGAN
SEKOLAH, KAWASAN PERINDUSTRIAN, PREMIS KERAJAAN DAN KOMUNITI
SEKITARNYA OLEH KEMENTERIAN KOMUNIKASI MALAYSIA – ZON UTARA
(KKMM.400-11/17/132(1))

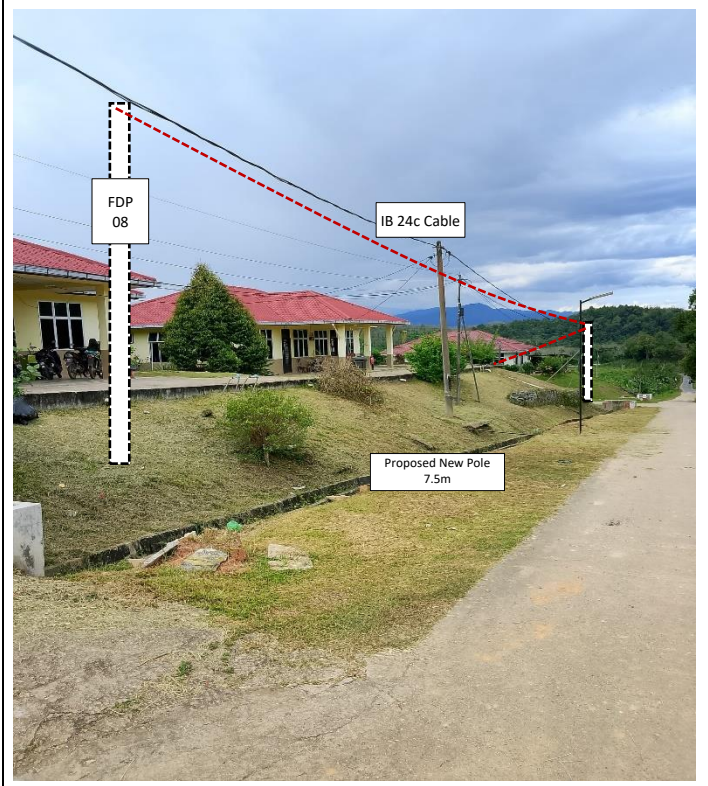
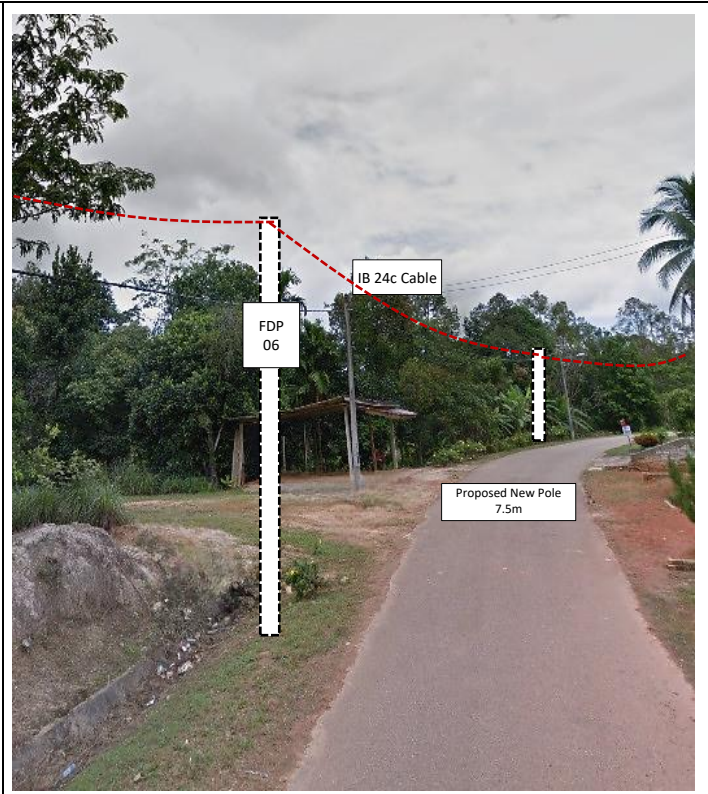
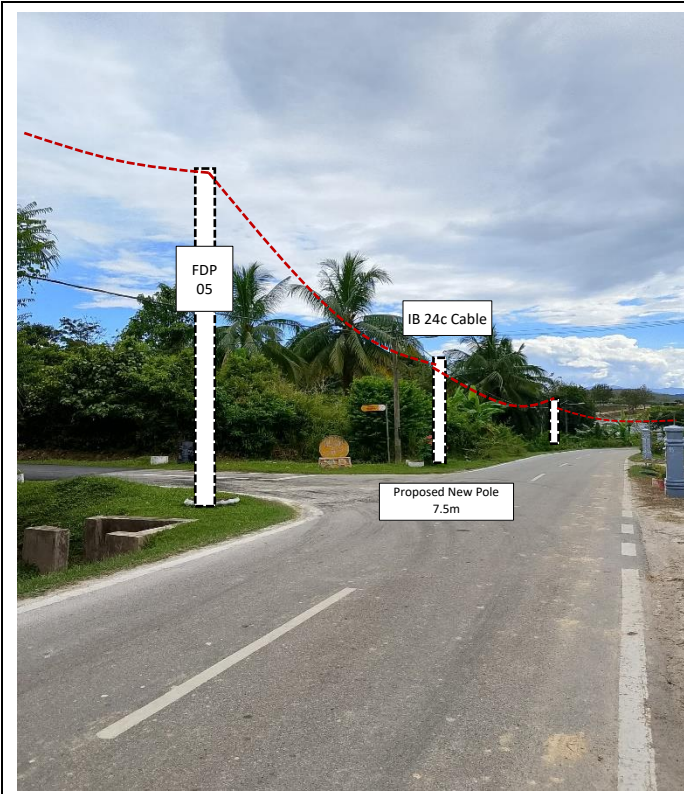


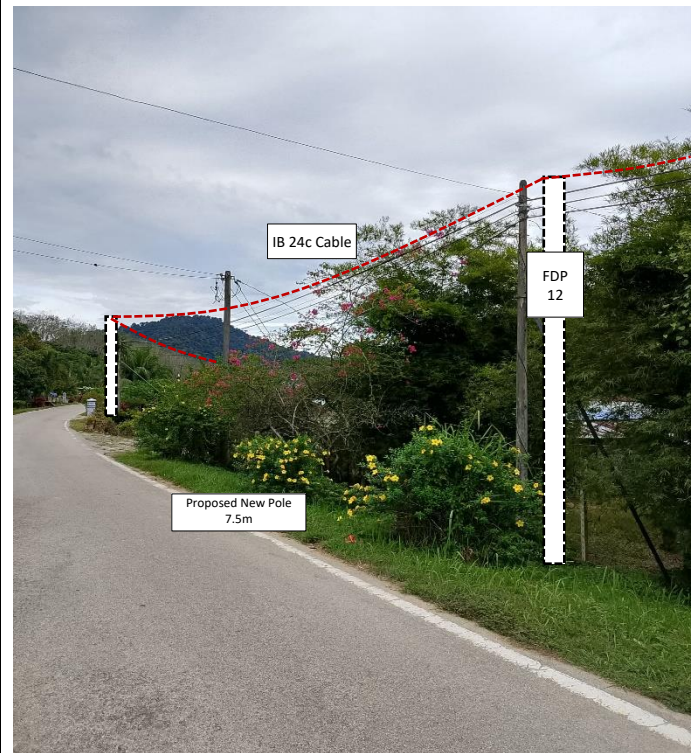
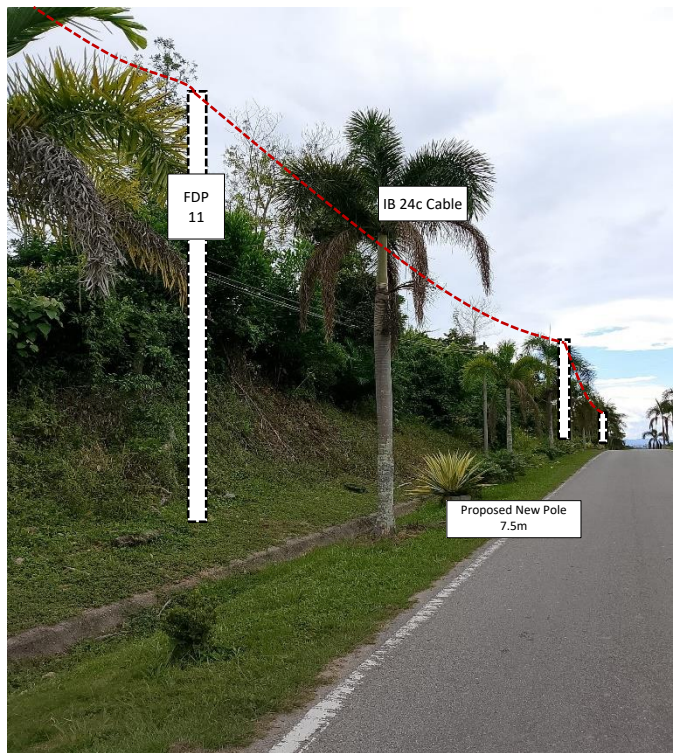
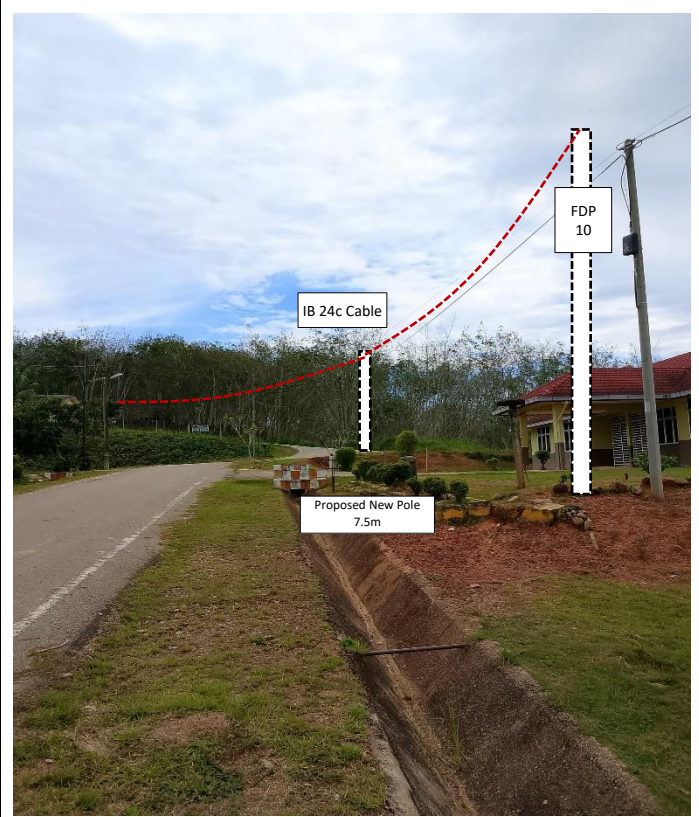
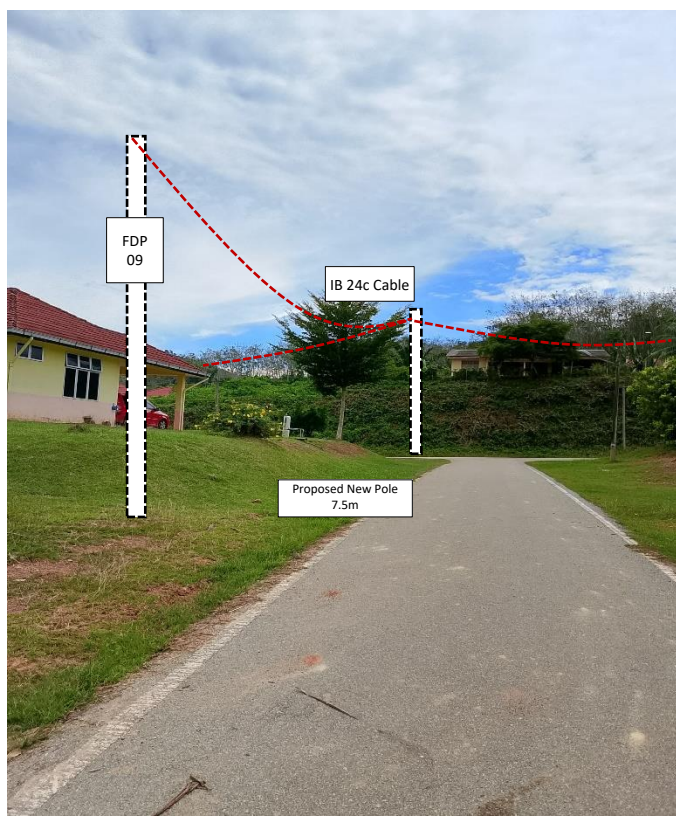
WABTECH SDN BHD
(1394887-X)

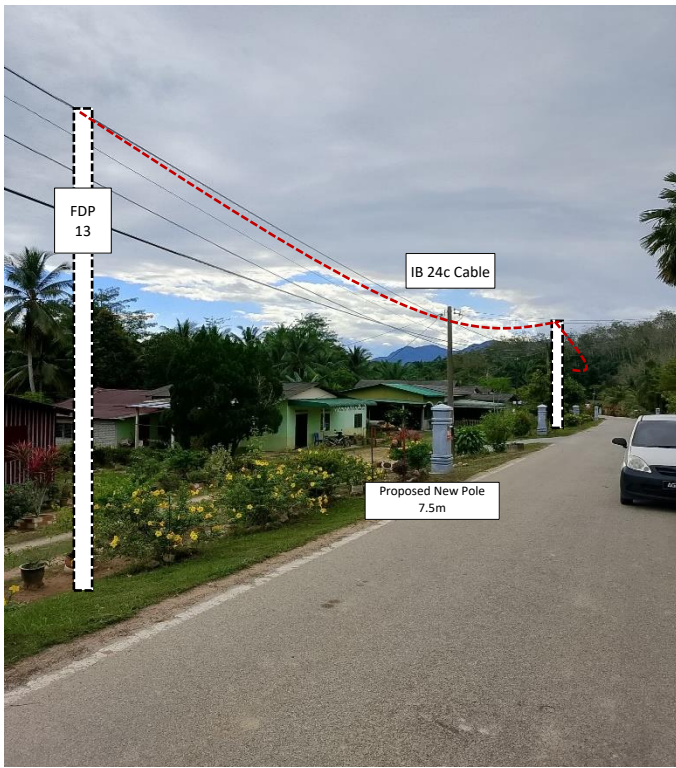
83	T082	40	5.299016	101.081882	Felda Papulut
84	T083	33	5.298767	101.082062	Felda Papulut
85	T084	41	5.298476	101.082290	Felda Papulut
86	T085	32	5.298634	101.081802	Felda Papulut
87	T086	28	5.298485	101.081599	Felda Papulut
88	T087	37	5.298745	101.081388	Felda Papulut
89	T088	43	5.298255	101.081288	Felda Papulut
90	T089	35	5.298054	101.081040	Felda Papulut
91	T090	41	5.298346	101.080814	Felda Papulut

5.0 SITE PHOTOS - PROPOSED NEW POLE











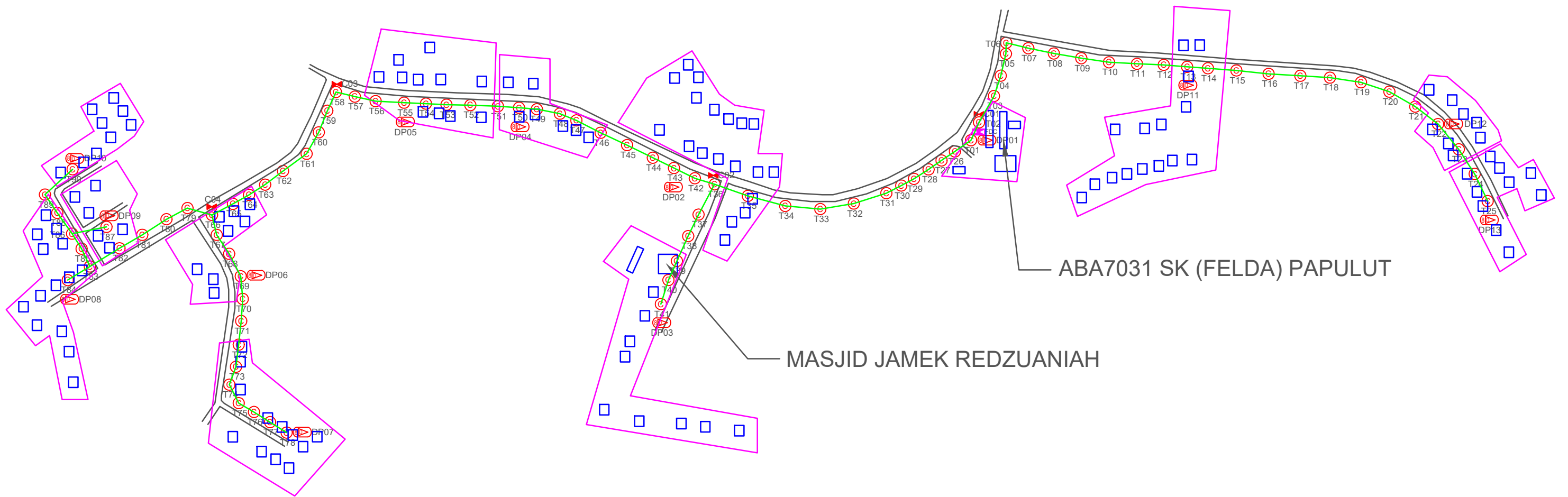
PROJEK PENYEDIAAN DAN PENYELENGGARAAN POINT OF PRESENCE (POP)
FASA 2: HAB INFRASTRUTUK GENTIAN OPTIK BERHAMPIRAN DENGAN
SEKOLAH, KAWASAN PERINDUSTRIAN, PREMIS KERAJAAN DAN KOMUNITI
SEKITARNYA OLEH KEMENTERIAN KOMUNIKASI MALAYSIA – ZON UTARA
(KKMM.400-11/17/132(1))



WABTECH SDN BHD
(1398387-X)

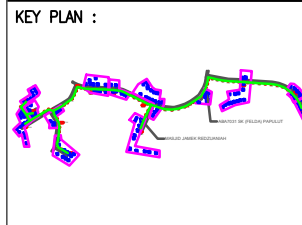
6.0 3rd PARTIES DEPENDENCIES

NO	LOCAL COUNCIL / AUTHORITY	REMARK
1	Felda Papulut	3302
2	JKR Daerah Gerik	-



TOTAL HOME PASSES: 104 UNITS

LEGEND											
	12C FOC		Installed 1:4 splitter in FDC		Installed Pole (9m)		New Manhole(JRC7)		Tension Small / Tension Big		MH NO.
	24C FOC		FDP with (1:8) splitter		Installed Riser		House Number		Existing Manhole		Existing TNB Pole NO.
	48C FOC		Closure		Suspension Big		Existing TNB Pole		Closure NO.		New Pole NO.
	96C FOC		New Manhole (PT)		Suspension Small		LOOP		FDP NO.		SEE A-A in this page
	144C FOC		Installed Pole (7.5M)		FDC		FDP Boundary		FDC NO.		SEE SHEET XXXX



PROJECT OWNER :

MAIN CONTRACTOR :

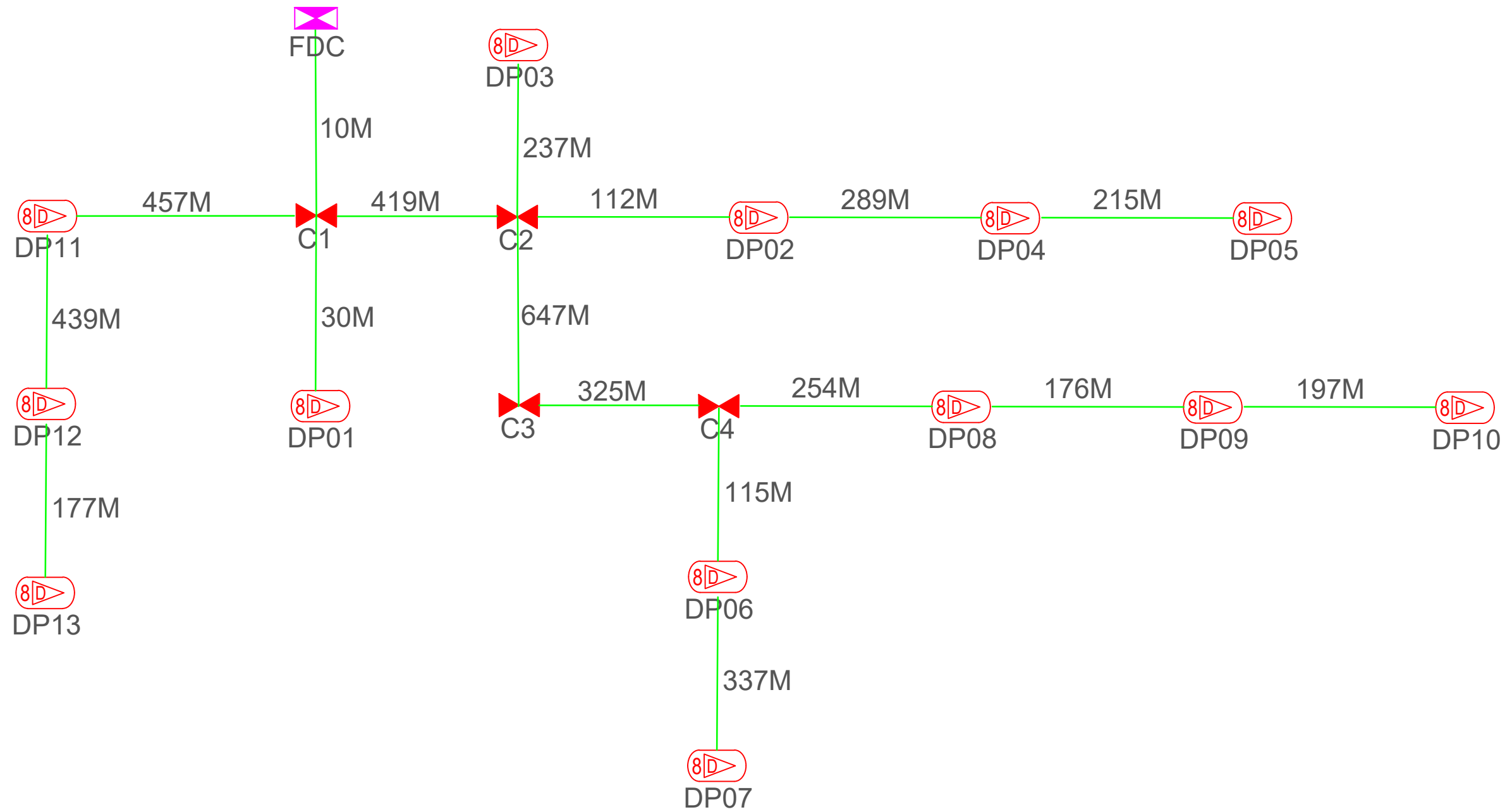
SUB-CONTRACTOR :

PROJECT TITLE:
 CONTRACT FOR THE PROVISION OF SUPPLY, INSTALLATION, AND COMMISSIONING OF FTTX NETWORK INFRASTRUCTURE - POP 2 PROJECT D-SIDE - ABA7031 - SK (FELDA) PAPULUT

DRAWING TITLE:
ABA7031 SK (FELDA) PAPULUT

PROJECT PHASE:
PROJECT PHASE

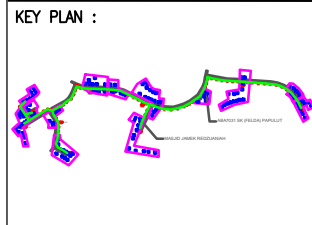
Design By	ENGINEER	Date	DATE
Drawn By	CAD ENGINEER	Scale	NTS
Checked By	ENGINEER	Job Number	JOB/NUMBER
DRAWING NUMBER :		Sheet :	
DRAWING/NUMBER		1/1	
THIS PRINT AND ITS COPYRIGHT ARE THE PROPERTY		Size :	
		A3	



TOTAL FOC DISTANCE: 4,436 METERS

LEGEND

	12C FOC		Installed 1:4 splitter in FDC		Installed Pole (9m)		New Manhole(JRC7)		Tension Small / Tension Big		MH NO.
	24C FOC		FDP with (1:8) splitter		Installed Riser		House Number		Existing Manhole		Existing TNB Pole NO.
	48C FOC		Closure		Suspension Big		Existing TNB Pole		Closure NO.		New Pole NO.
	96C FOC		New Manhole (PT)		Suspension Small		LOOP		FDP NO.		SEE SHEET XXXX
	144C FOC		Installed Pole (7.5M)		FDC		FDP Boundary		FDC NO.		SEE SHEET XXXX



PROJECT OWNER :

KEMENTERIAN KOMUNIKASI

MAIN CONTRACTOR

PRIVASAT

SUB-CONTRACTOR :

WABTECH SDN BHD

PROJECT TITLE:

CONTRACT FOR THE PROVISION OF SUPPLY, INSTALLATION, AND COMMISSIONING OF FTTX NETWORK INFRASTRUCTURE - POP 2 PROJECT D-SIDE - ABA7031 - SK (FELDA) PAPULUT

DRAWING TITLE:

ABA7031 SK (FELDA) PAPULUT

PROJECT PHASE:

PROJECT PHASE

Design By	ENGINEER	Date	DATE
Drawn By	CAD ENGINEER	Scale	NTS
Checked By	ENGINEER	Job Number	JOB/NUMBER
DRAWING NUMBER :		Sheet :	
DRAWING/NUMBER		1/1	
THIS PRINT AND ITS COPYRIGHT ARE THE PROPERTY			
Size : A3			