

TECHNICAL PROPOSAL

POP2 ABDA002 SEKOLAH JENIS KEBANGSAAN (TAMIL) SLIM VILLAGE (D-SIDE)

Company Name	:	STEADCOM SDN BHD
Company Address	:	11-3, Jalan Puteri 2/6, Bandar Puteri, 47100 Puchong, Selangor
Prepared By	:	Fariz Aizat
Date	:	19/11/2024



POINT A

POINT B

Starting Point

Site / Boundary Name	:	SEKOLAH JENIS KEBANGSAAN (TAMIL) SLIM VILLAGE
Address	:	Jalan Kg Lintah Piong, Kg Baharu, 35800 Slim River, Perak.
District	:	Slim River
Postcode	:	35800
State	:	Perak
GPS Coordinate	:	3.850586, 101.479177
LRD	:	A

End Point

Site / Boundary Name	:	SEKOLAH JENIS KEBANGSAAN (TAMIL) SLIM VILLAGE
Address	:	Jalan Kg Baharu, Kg Baharu, 35800 Slim River, Perak.
District	:	Slim River
Postcode	:	35800
State	:	Perak
GPS Coordinate	:	3.847428, 101.484475
LRD	:	B

Work Summary

No	Proposed Distance and Method	Unit	Qty
1	Horizontal Directional Drilling (HDD)	m	0
2	Carriage Way Open trench (CW)	m	0
3	Grass Verge Open Trenching (GV)	m	0
4	Micro trenching (MT)	m	0
	Total		0

	Other Information	Unit	Qty
1	Proposed Manhole	EA	0
2	Proposed Pole	EA	80
3	Joint Closure	EA	5
4	Estimated time required for completion	days	30

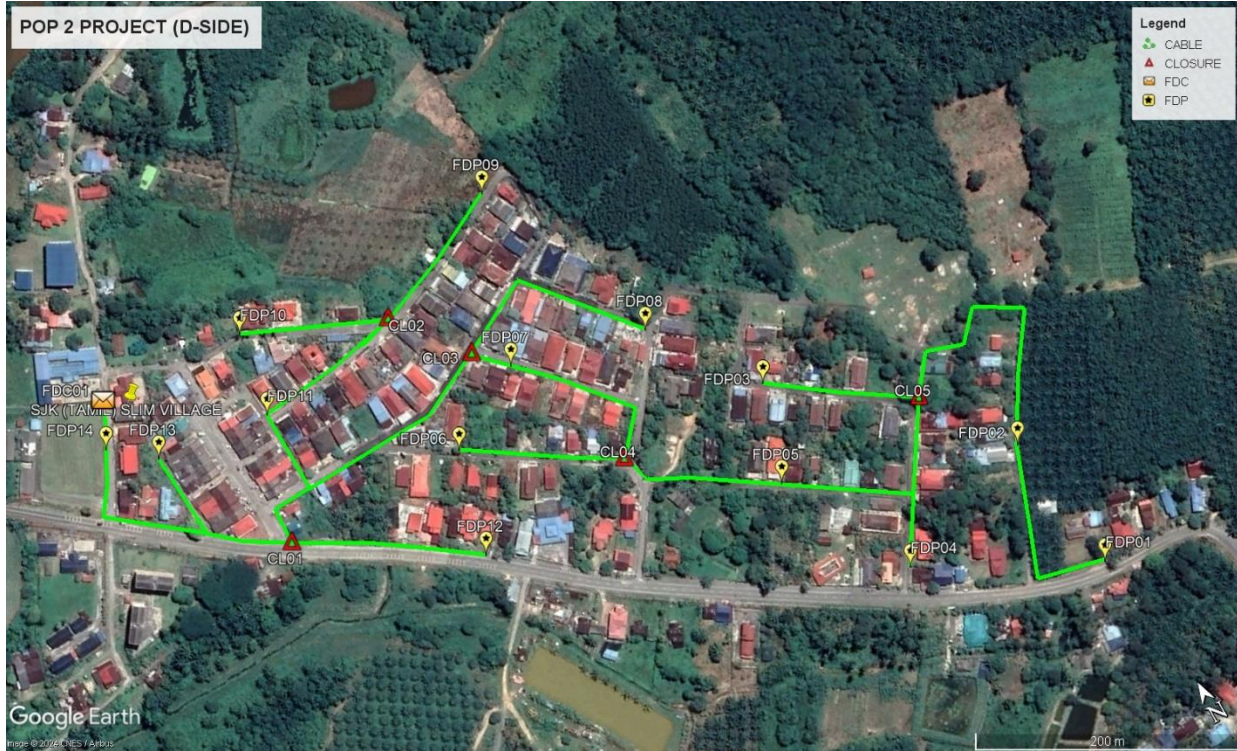
Local Authority Summary

1. Daerah Tanjong Malim

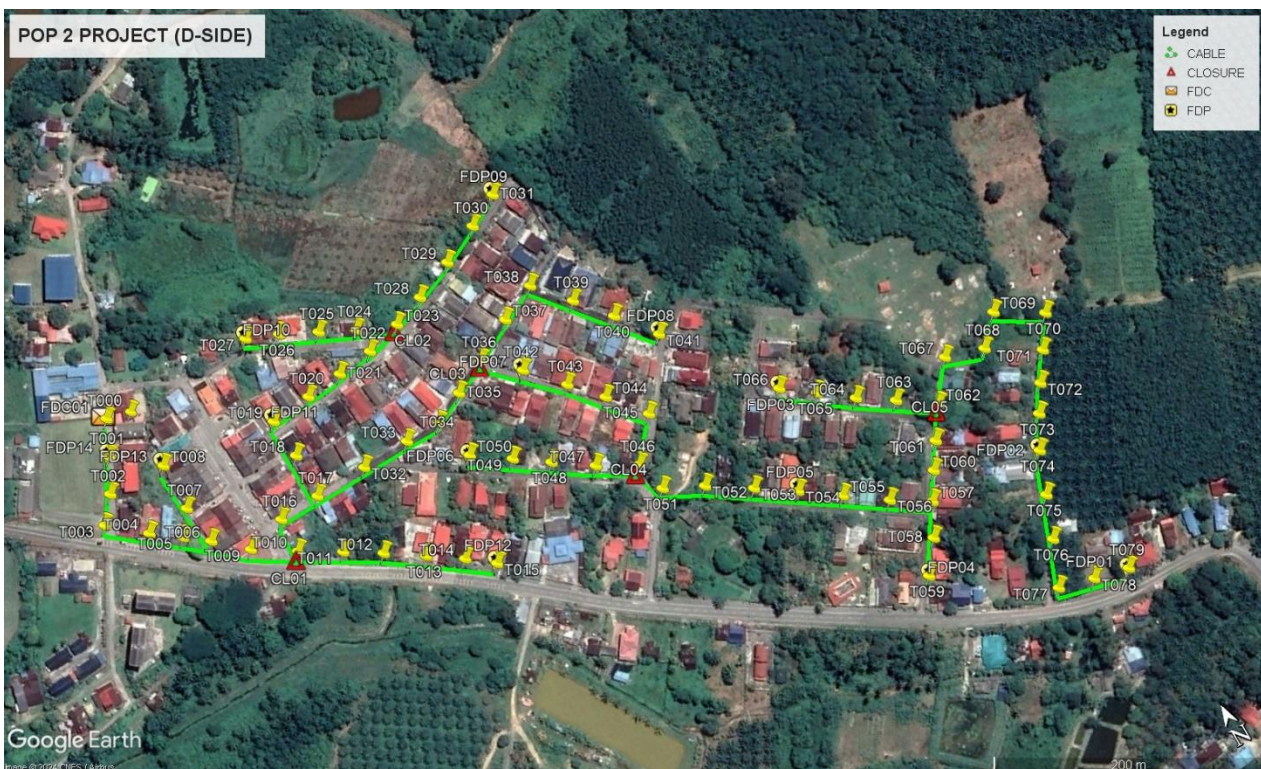
Bil	Items	Owner	Quantity	Distance(m)
1	HDD	JKR	-	-
		Majlis	-	-
		Estate / Private Land	-	-
2	New Pole	JKR	14PCS	450m
		Majlis	66PCS	2085m
		Estate / Private Land	-	-
3	Existing TNB Pole	JKR	-	-
		Majlis	-	-
		Estate / Private Land	-	-
Total				2535m

Site Plan – KMZ (Overview site area)

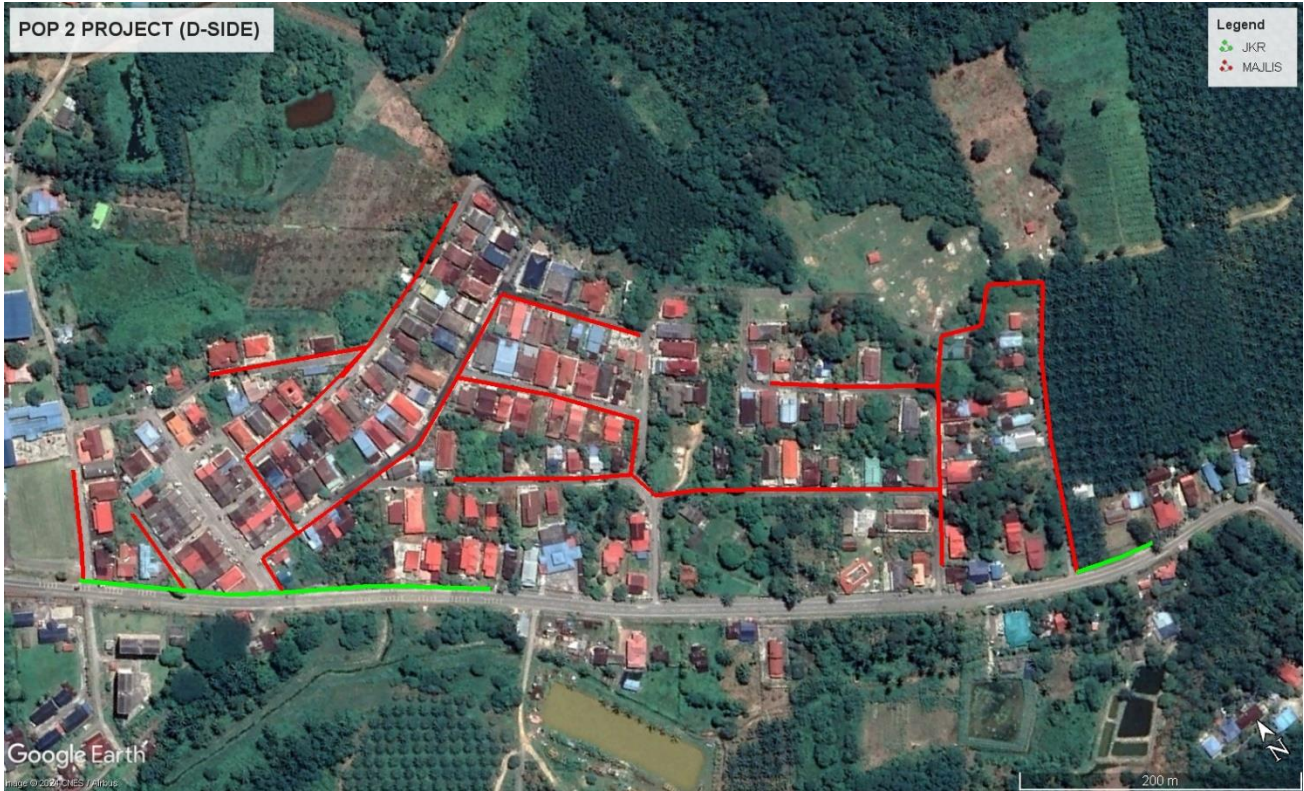
Proposed FDP and Closure



Proposed New Pole



Site Plan – KMZ Routing (All Local Authority)

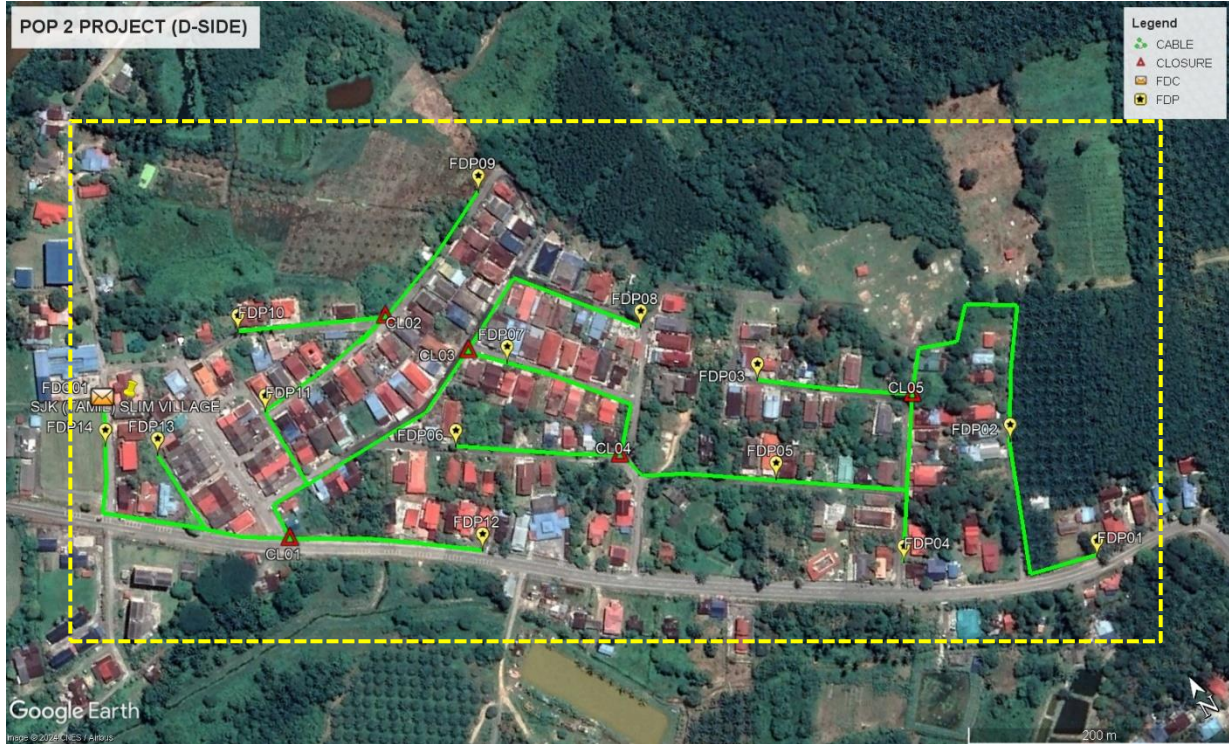


Green Colour – JKR Muallim

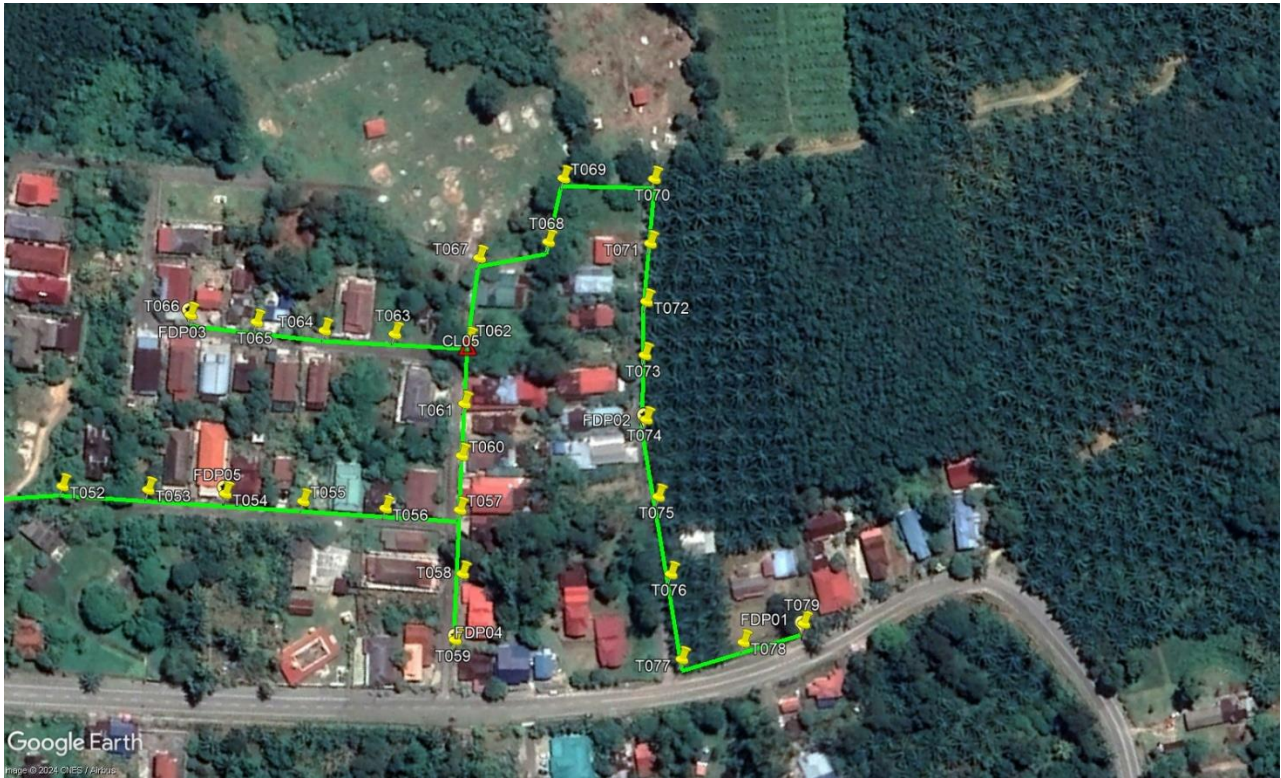
Red Colour – Majlis Daerah Tanjong Malim

Site Plan – KMZ Routing (All site area)

Route 1

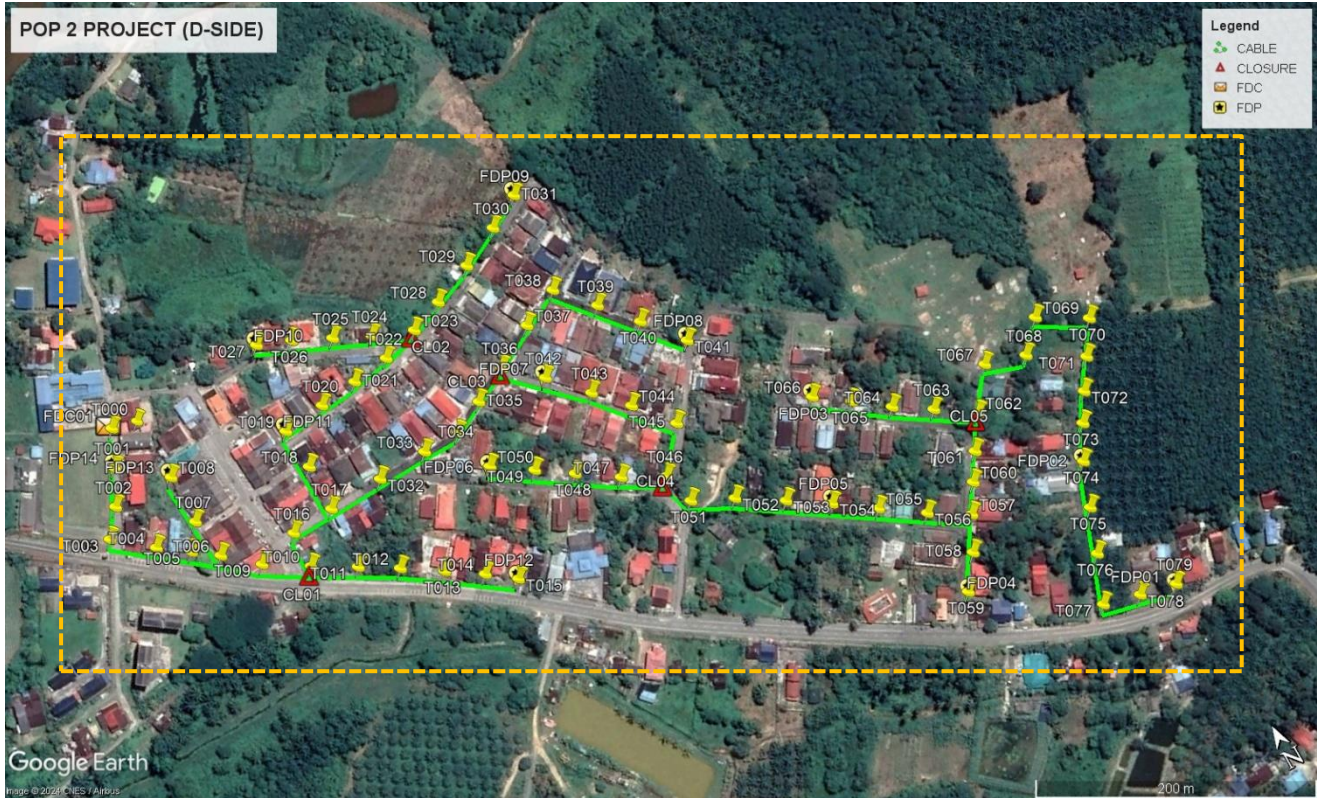


Route 1.1



Route 1.2

Site Plan – KMZ Routing (Proposed new Pole)



Proposed New Pole Lat & Long Table

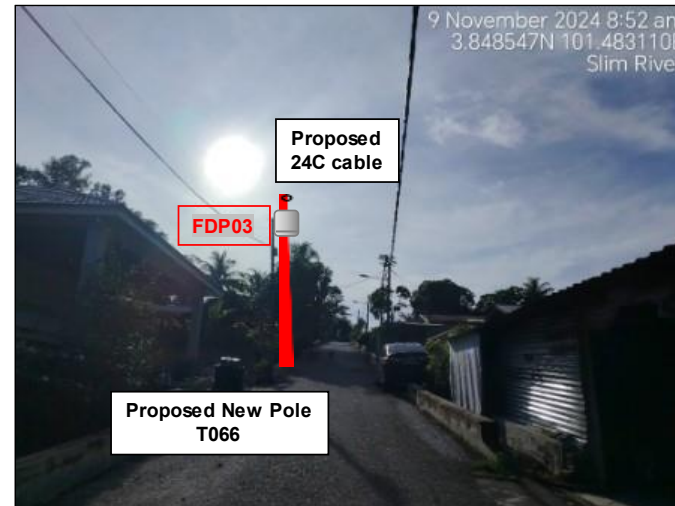
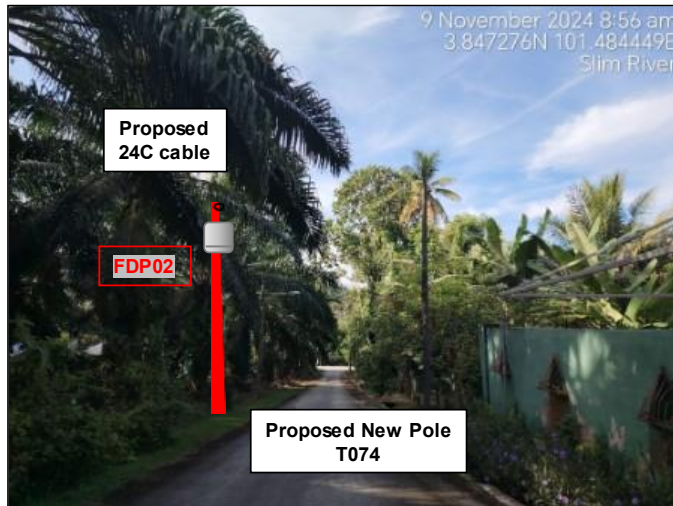
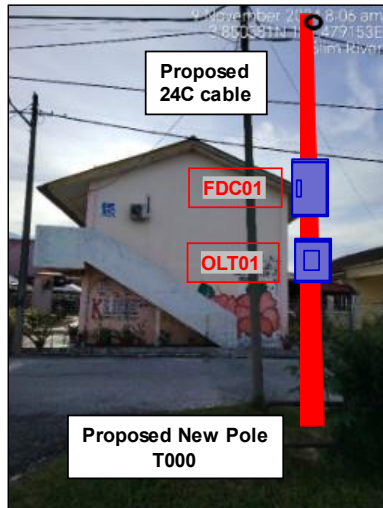
No.	Label	Pole & Manhole ID	Latitude	Longitude	Local Authority
1	OLT / FDC	T000	3.850611	101.479146	MAJLIS DAERAH TANJONG MALIM
2	FDP01	T079	3.846386	101.484575	JKR DAERAH MUALLIM
3	FDP02	T074	3.847358	101.484446	MAJLIS DAERAH TANJONG MALIM
4	FDP03	T066	3.848573	101.483142	MAJLIS DAERAH TANJONG MALIM
5	FDP04	T059	3.846999	101.483393	MAJLIS DAERAH TANJONG MALIM
6	FDP05	T054	3.847918	101.482915	MAJLIS DAERAH TANJONG MALIM
7	FDP06	T050	3.849206	101.481129	MAJLIS DAERAH TANJONG MALIM
8	FDP07	T042	3.849522	101.481718	MAJLIS DAERAH TANJONG MALIM
9	FDP08	T041	3.849281	101.482625	MAJLIS DAERAH TANJONG MALIM
10	FDP09	T031	3.850635	101.482121	MAJLIS DAERAH TANJONG MALIM
11	FDP10	T027	3.850617	101.480214	MAJLIS DAERAH TANJONG MALIM
12	FDP11	T019	3.850046	101.480105	MAJLIS DAERAH TANJONG MALIM
13	FDP12	T015	3.848492	101.480932	JKR DAERAH MUALLIM
14	FDP13	T008	3.850153	101.479320	MAJLIS DAERAH TANJONG MALIM
15	FDP14	T001	3.850384	101.479035	MAJLIS DAERAH TANJONG MALIM
16	CL01	T010	3.849217	101.479818	JKR DAERAH MUALLIM
17	CL02	T023	3.850200	101.481140	MAJLIS DAERAH TANJONG MALIM
18	CL03	T036	3.849716	101.481507	MAJLIS DAERAH TANJONG MALIM
19	CL04	T046	3.848593	101.482082	MAJLIS DAERAH TANJONG MALIM
20	CL05	T062	3.847959	101.484013	MAJLIS DAERAH TANJONG MALIM

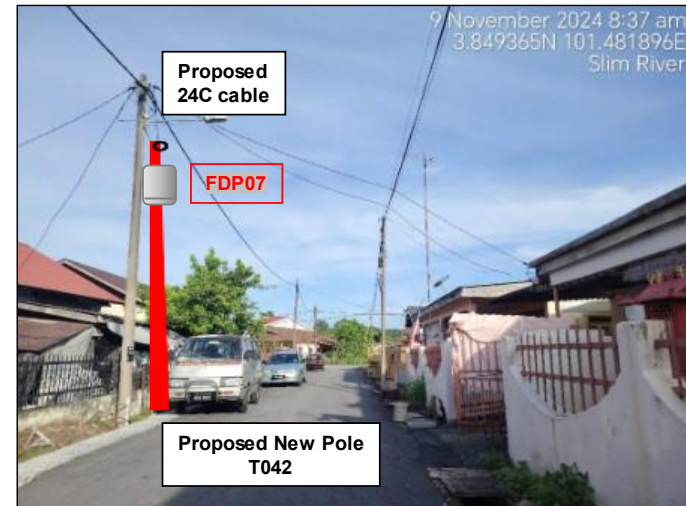
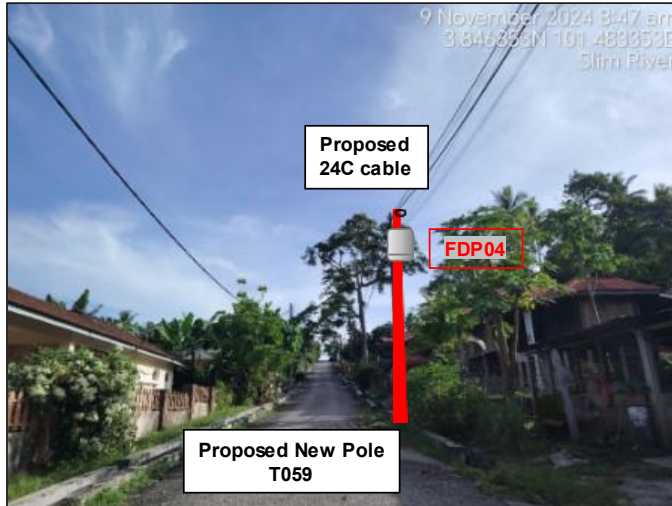
Overall Pole (Proposed New)

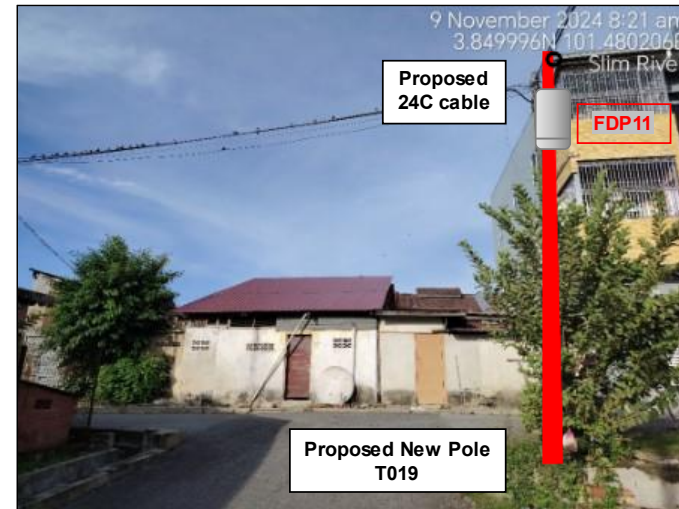
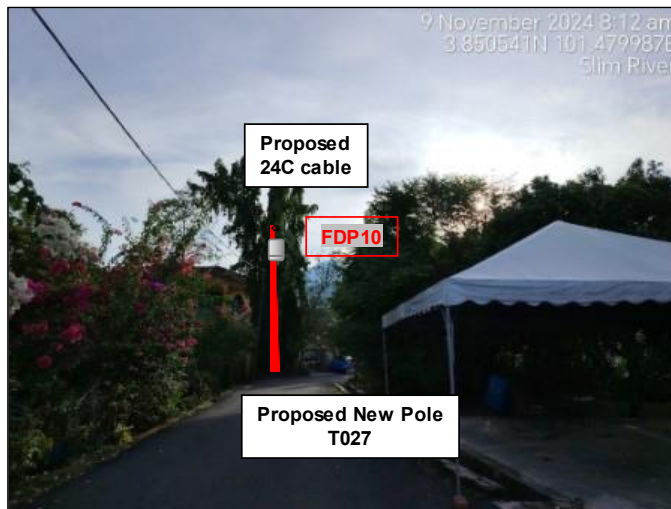
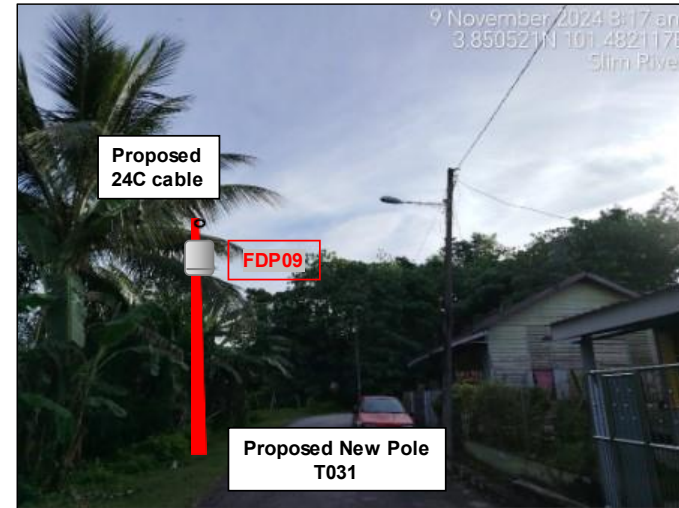
No.	Pole & Manhole ID	Distance	Latitude	Longitude	Local Authority
1	T000	0	3.850611	101.479146	MAJLIS DAERAH TANJONG MALIM
2	T001	25	3.850384	101.479035	MAJLIS DAERAH TANJONG MALIM
3	T002	25	3.850164	101.478918	MAJLIS DAERAH TANJONG MALIM
4	T003	30	3.850002	101.478784	JKR DAERAH MUALLIM
5	T004	35	3.849809	101.479015	JKR DAERAH MUALLIM
6	T005	25	3.849675	101.479199	JKR DAERAH MUALLIM
7	T006	25	3.849562	101.479349	JKR DAERAH MUALLIM
8	T007	35	3.849830	101.479314	MAJLIS DAERAH TANJONG MALIM
9	T008	35	3.850153	101.479320	MAJLIS DAERAH TANJONG MALIM
10	T009	35	3.849383	101.479551	JKR DAERAH MUALLIM
11	T010	35	3.849217	101.479818	JKR DAERAH MUALLIM
12	T011	35	3.849065	101.480078	JKR DAERAH MUALLIM
13	T012	35	3.848924	101.480307	JKR DAERAH MUALLIM
14	T013	35	3.848768	101.480544	JKR DAERAH MUALLIM
15	T014	35	3.848623	101.480762	JKR DAERAH MUALLIM
16	T015	30	3.848492	101.480932	JKR DAERAH MUALLIM
17	T016	30	3.849455	101.479826	MAJLIS DAERAH TANJONG MALIM
18	T017	35	3.849471	101.480113	MAJLIS DAERAH TANJONG MALIM
19	T018	35	3.849775	101.480122	MAJLIS DAERAH TANJONG MALIM
20	T019	35	3.850046	101.480105	MAJLIS DAERAH TANJONG MALIM
21	T020	30	3.850074	101.480388	MAJLIS DAERAH TANJONG MALIM
22	T021	30	3.850103	101.480645	MAJLIS DAERAH TANJONG MALIM
23	T022	30	3.850134	101.480894	MAJLIS DAERAH TANJONG MALIM
24	T023	30	3.850200	101.481140	MAJLIS DAERAH TANJONG MALIM
25	T024	30	3.850304	101.480885	MAJLIS DAERAH TANJONG MALIM
26	T025	30	3.850415	101.480660	MAJLIS DAERAH TANJONG MALIM
27	T026	30	3.850532	101.480423	MAJLIS DAERAH TANJONG MALIM
28	T027	30	3.850617	101.480214	MAJLIS DAERAH TANJONG MALIM
29	T028	30	3.850281	101.481362	MAJLIS DAERAH TANJONG MALIM
30	T029	30	3.850393	101.481635	MAJLIS DAERAH TANJONG MALIM
31	T030	30	3.850519	101.481901	MAJLIS DAERAH TANJONG MALIM
32	T031	30	3.850635	101.482121	MAJLIS DAERAH TANJONG MALIM
33	T032	40	3.849482	101.480479	MAJLIS DAERAH TANJONG MALIM
34	T033	35	3.849493	101.480812	MAJLIS DAERAH TANJONG MALIM
35	T034	35	3.849492	101.481057	MAJLIS DAERAH TANJONG MALIM
36	T035	30	3.849600	101.481272	MAJLIS DAERAH TANJONG MALIM
37	T036	30	3.849716	101.481507	MAJLIS DAERAH TANJONG MALIM
38	T037	35	3.849871	101.481782	MAJLIS DAERAH TANJONG MALIM
39	T038	35	3.849986	101.482037	MAJLIS DAERAH TANJONG MALIM
40	T039	35	3.849759	101.482236	MAJLIS DAERAH TANJONG MALIM

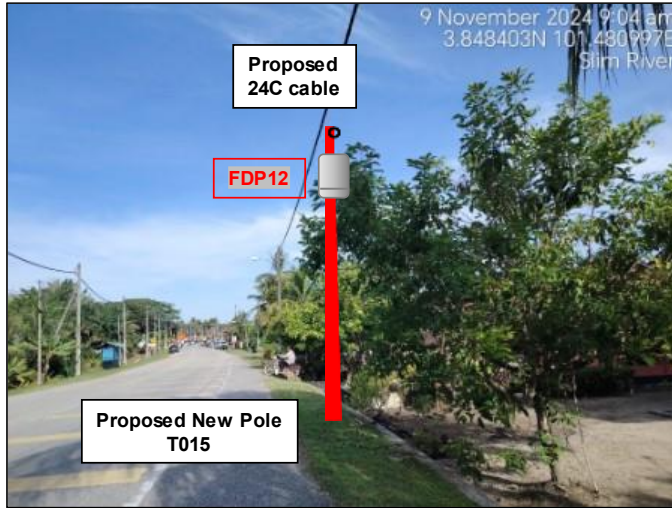
41	T040	35	3.849534	101.482425	MAJLIS DAERAH TANJONG MALIM
42	T041	35	3.849281	101.482625	MAJLIS DAERAH TANJONG MALIM
43	T042	30	3.849522	101.481718	MAJLIS DAERAH TANJONG MALIM
44	T043	35	3.849293	101.481927	MAJLIS DAERAH TANJONG MALIM
45	T044	30	3.849095	101.482108	MAJLIS DAERAH TANJONG MALIM
46	T045	35	3.848855	101.482304	MAJLIS DAERAH TANJONG MALIM
47	T046	40	3.848593	101.482082	MAJLIS DAERAH TANJONG MALIM
48	T047	35	3.848731	101.481824	MAJLIS DAERAH TANJONG MALIM
49	T048	30	3.848897	101.481579	MAJLIS DAERAH TANJONG MALIM
50	T049	30	3.849044	101.481367	MAJLIS DAERAH TANJONG MALIM
51	T050	30	3.849206	101.481129	MAJLIS DAERAH TANJONG MALIM
52	T051	30	3.848380	101.482138	MAJLIS DAERAH TANJONG MALIM
53	T052	35	3.848255	101.482392	MAJLIS DAERAH TANJONG MALIM
54	T053	35	3.848079	101.482668	MAJLIS DAERAH TANJONG MALIM
55	T054	35	3.847918	101.482915	MAJLIS DAERAH TANJONG MALIM
56	T055	35	3.847745	101.483157	MAJLIS DAERAH TANJONG MALIM
57	T056	35	3.847564	101.483415	MAJLIS DAERAH TANJONG MALIM
58	T057	35	3.847417	101.483658	MAJLIS DAERAH TANJONG MALIM
59	T058	30	3.847202	101.483544	MAJLIS DAERAH TANJONG MALIM
60	T059	30	3.846999	101.483393	MAJLIS DAERAH TANJONG MALIM
61	T060	25	3.847591	101.483767	MAJLIS DAERAH TANJONG MALIM
62	T061	25	3.847757	101.483876	MAJLIS DAERAH TANJONG MALIM
63	T062	30	3.847959	101.484013	MAJLIS DAERAH TANJONG MALIM
64	T063	30	3.848120	101.483779	MAJLIS DAERAH TANJONG MALIM
65	T064	30	3.848265	101.483555	MAJLIS DAERAH TANJONG MALIM
66	T065	30	3.848423	101.483347	MAJLIS DAERAH TANJONG MALIM
67	T066	30	3.848573	101.483142	MAJLIS DAERAH TANJONG MALIM
68	T067	35	3.848208	101.484204	MAJLIS DAERAH TANJONG MALIM
69	T068	35	3.848129	101.484463	MAJLIS DAERAH TANJONG MALIM
70	T069	35	3.848309	101.484635	MAJLIS DAERAH TANJONG MALIM
71	T070	35	3.848134	101.484932	MAJLIS DAERAH TANJONG MALIM
72	T071	30	3.847929	101.484796	MAJLIS DAERAH TANJONG MALIM
73	T072	30	3.847745	101.484673	MAJLIS DAERAH TANJONG MALIM
74	T073	30	3.847572	101.484564	MAJLIS DAERAH TANJONG MALIM
75	T074	30	3.847358	101.484446	MAJLIS DAERAH TANJONG MALIM
76	T075	35	3.847081	101.484338	MAJLIS DAERAH TANJONG MALIM
77	T076	35	3.846802	101.484231	MAJLIS DAERAH TANJONG MALIM
78	T077	35	3.846501	101.484104	JKR DAERAH MUALLIM
79	T078	30	3.846439	101.484340	JKR DAERAH MUALLIM
80	T079	30	3.846386	101.484575	JKR DAERAH MUALLIM

Site Photos – Proposed to install pole









3rd Parties Dependencies

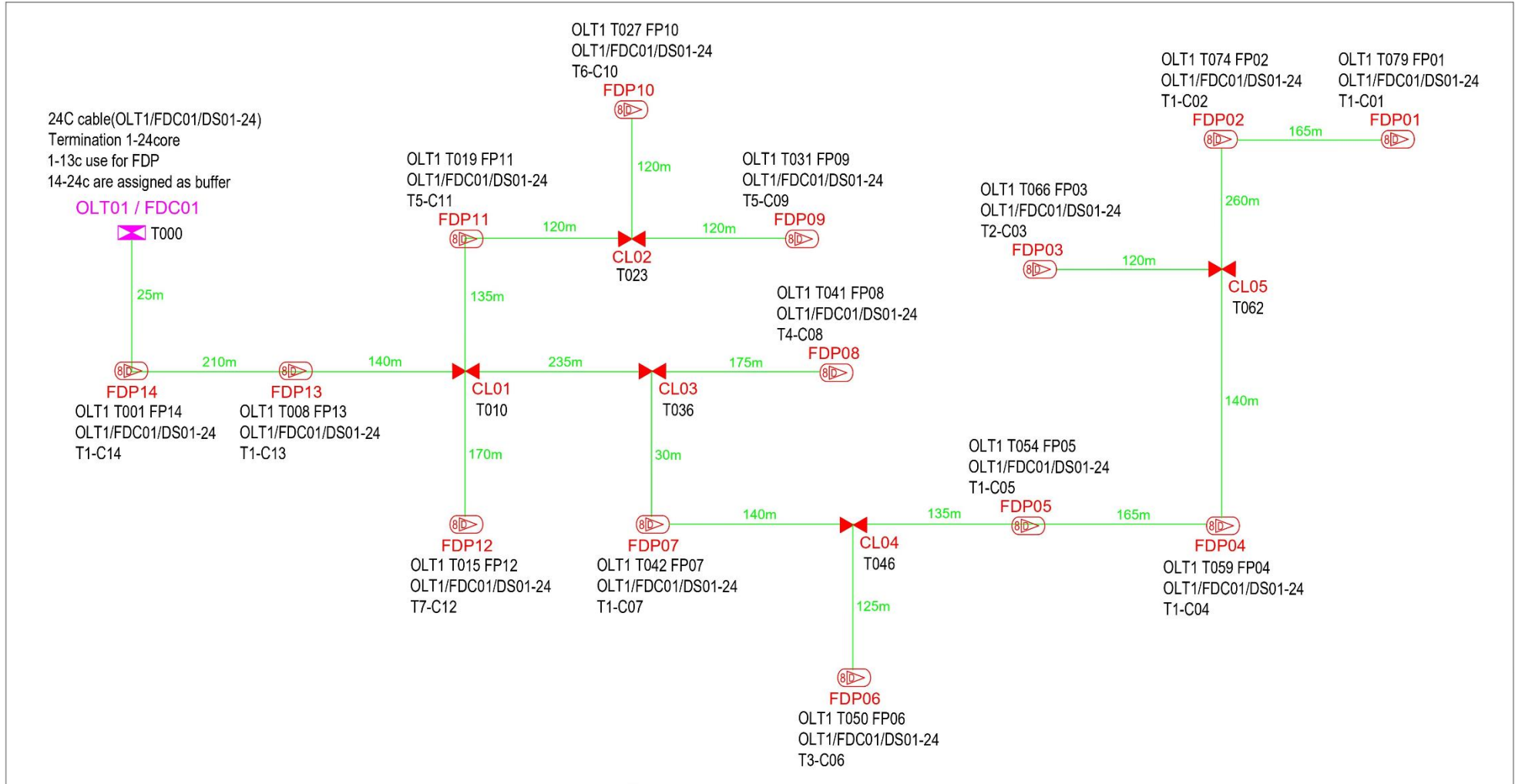
No.	Local Council/ Authority	Remark
1	JKR Muallim	
2	Majlis Daerah Tanjong Malim	
3		
4		
5		
6		



12C FOC	Installed 1:4 / 1:8 / 1:32 splitter	Installed Pole (9m)	Suspension	80	New Manhole (M1)	Micro-trenching (Meter)	MH1	MH NO.
24C FOC	Installed Patch Cord	Installed Pole (7.5M)	Tension	151	New Manhole(JRC7)	Temporary infra (Meter)	TKS-1	Existing TNB Pole NO.
48C FOC	FDC	Installed Pole (6.7M)	Pole Ring	14	FDP Boundary	Loop / Coil (Meter)	POD1	New Pole NO.
96C FOC	Closure	Existing TNB Pole	FDP with (1:8) splitter	14	HDD (Meter)	Active Outdoor Cabinet	CLD1	Closure NO.
144C FOC	Existing Closure	Installed Riser	Existing Manhole		Open Cut (Meter)	FDC NO.	CD1	FDP NO.

KEY PLAN:	PROJECT OWNER: APEX COMMUNICATIONS SDN BHD 187475-V PRIVASAT	MAIN CONTRACTOR: STEADCOM A member of OCK Group Berhad	SUB-CONTRACTOR:	PROJECT TITLE: CONTRACTOR FOR SURVEY, TECHNICAL PROPOSAL AND WAYLEAVE & PERMIT APPROVAL -POP2 PROJECT	DRAWING TITLE: Construction Drawing ABDA002 SJK (TAMIL) SLIM VILLAGE	Design By : Drawn By : Checked By :	Date : Scale : Job Number :
					PROJECT PHASE: POP 2	DRAWING NUMBER : ABDA002-CD-01	Sheet : 1/1
						THIS PRINT AND ITS COPYRIGHT ARE THE PROPERTY OF STEADCOM SDN BHD	

ACTUAL HOVEPASS :



12C FOC	Installed 1:4 / 1:8 / 1:32 splitter	Installed Pole (9m)	Suspension	50	New Manhole (PT)	Micro-Trenching (Meter)	MH1	WH NO.
24C FOC	Installed Patch Cord	Installed Pole (7.5M)	Tension	151	New Manhole (RC7)	Temporary Infra (Meter)	TKS-1	Existing TNB Pole NO.
48C FOC	FDC	Installed Pole (6.7M)	Pole Ring	14	FDP Boundary	Loop / Coil (Meter)	POB1	New Pole NO.
96C FOC	Closure	Existing TNB Pole	FDP with (1:8) splitter	14	HBD (Meter)	Active Outdoor Cabinet	GL01	Closure NO.
144C FOC	Existing Closure	Installed Riser	Existing Manhole		Open Cut (Meter)	FDC NO.	DPI	FDP NO.

KEY PLAN:	PROJECT OWNER: APEX COMMUNICATIONS SDN BHD 187475-Y PRIVASAT	MAIN CONTRACTOR: STEADCOM A member of OCK Group Berhad	SUB-CONTRACTOR:	PROJECT TITLE: CONTRACTOR FOR SURVEY, TECHNICAL PROPOSAL AND WAYLEAVE & PERMIT APPROVAL - POP2 PROJECT	DRAWING TITLE: SLD Drawing ABDA002 SJK (TAMIL) SLIM VILLAGE	PROJECT PHASE: POP 2	Design By : Drawn By : Checked By : Date : 19/11/2024 Scale : NTS Job Number : JOB/NUMBER DRAWING NUMBER : ABDA002-CD-01 Sheet : 1/1 THIS PRINT AND ITS COPYRIGHT ARE THE PROPERTY OF STEADCOM SDN BHD Size : A3
-----------	--	---	-----------------	---	--	-------------------------	--

ACTUAL HOMEPASS :