

## TECHNICAL PROPOSAL

### POP2 ABC0060 SEKOLAH JENIS KEBANGSAAN (CINA) CHOONG HUA 1 (D-SIDE)

Company Name	:	STEADCOM SDN BHD
Company Address	:	11-3, Jalan Puteri 2/6, Bandar Puteri, 47100 Puchong, Selangor
Prepared By	:	Fariz Aizat
Date	:	7/12/2024



POINT A

POINT B

**Starting Point**

Site / Boundary Name	:	SEKOLAH JENIS KEBANGSAAN (CINA) CHOONG HUA 1
Address	:	Jalan Sekolah, 35500 Bidor, Perak.
District	:	Bidor
Postcode	:	35500
State	:	Perak
GPS Coordinate	:	4.111391, 101.284914
LRD	:	A

**End Point**

Site / Boundary Name	:	SEKOLAH JENIS KEBANGSAAN (CINA) CHOONG HUA 1
Address	:	Jalan Taman Malaysia, Taman Malaysia, 35500 Bidor, Perak.
District	:	Bidor
Postcode	:	35500
State	:	Perak
GPS Coordinate	:	4.106325, 101.282441
LRD	:	B

### Work Summary

No	Proposed Distance and Method	Unit	Qty
1	Horizontal Directional Drilling (HDD)	m	0
2	Carriage Way Open trench (CW)	m	0
3	Grass Verge Open Trenching (GV)	m	0
4	Micro trenching (MT)	m	0
	Total		0

	Other Information	Unit	Qty
1	Proposed Manhole	EA	0
2	Proposed Pole	EA	89
3	Joint Closure	EA	4
4	Estimated time required for completion	days	30

### Local Authority Summary

1. Daerah Tapah

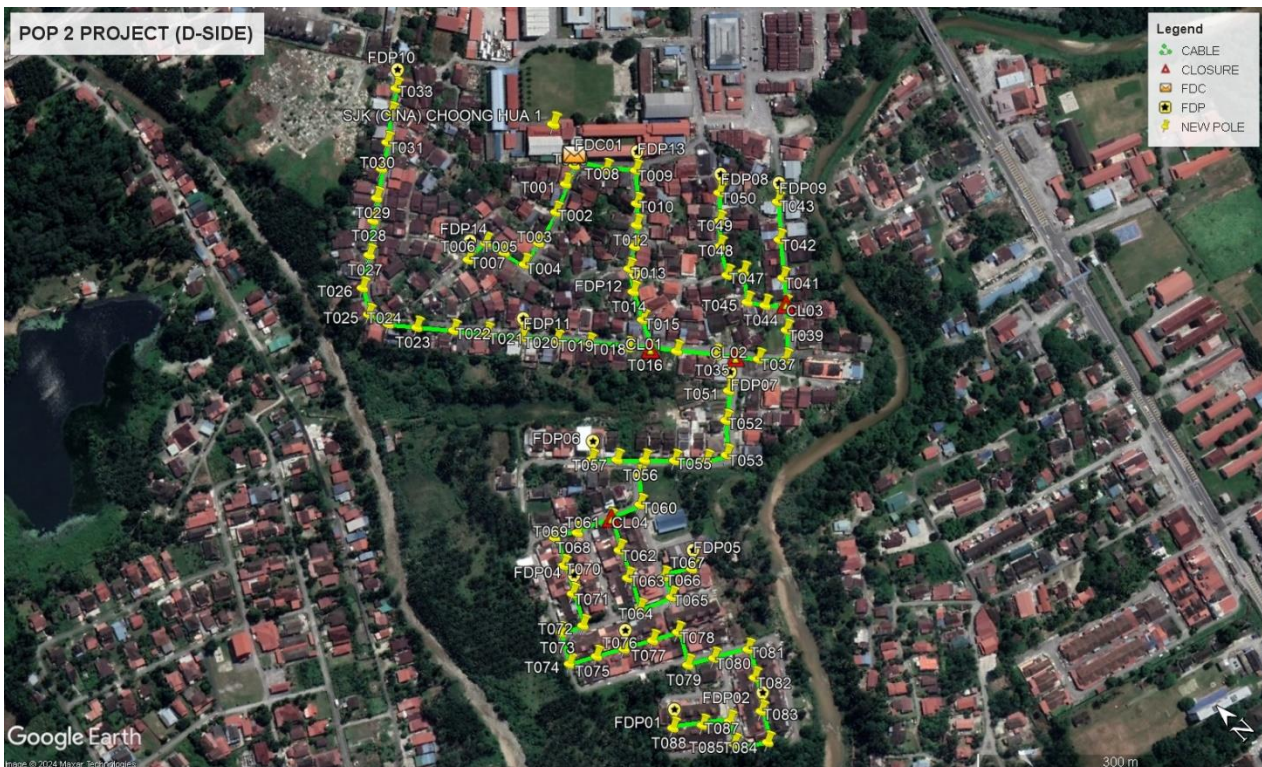
Bil	Items	Owner	Quantity	Distance(m)
1	HDD	JKR	-	-
		Majlis	-	-
		Estate / Private Land	-	-
2	New Pole	JKR	-	-
		Majlis	89PCS	2830m
		Estate / Private Land	-	-
3	Existing TNB Pole	JKR	-	-
		Majlis	-	-
		Estate / Private Land	-	-
Total				2830m

**Site Plan – KMZ (Overview site area)**

**Proposed FDP and Closure**



**Proposed New Pole**



**Site Plan – KMZ Routing (All Local Authority)**

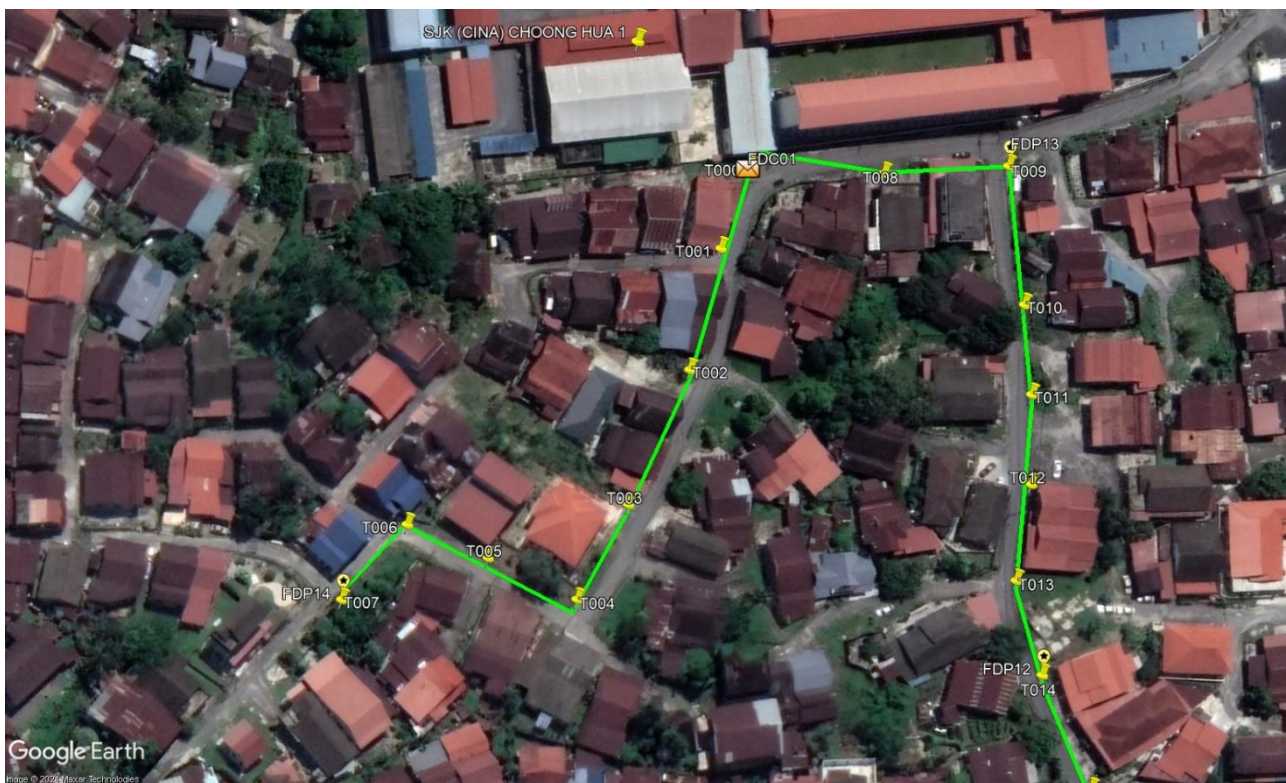
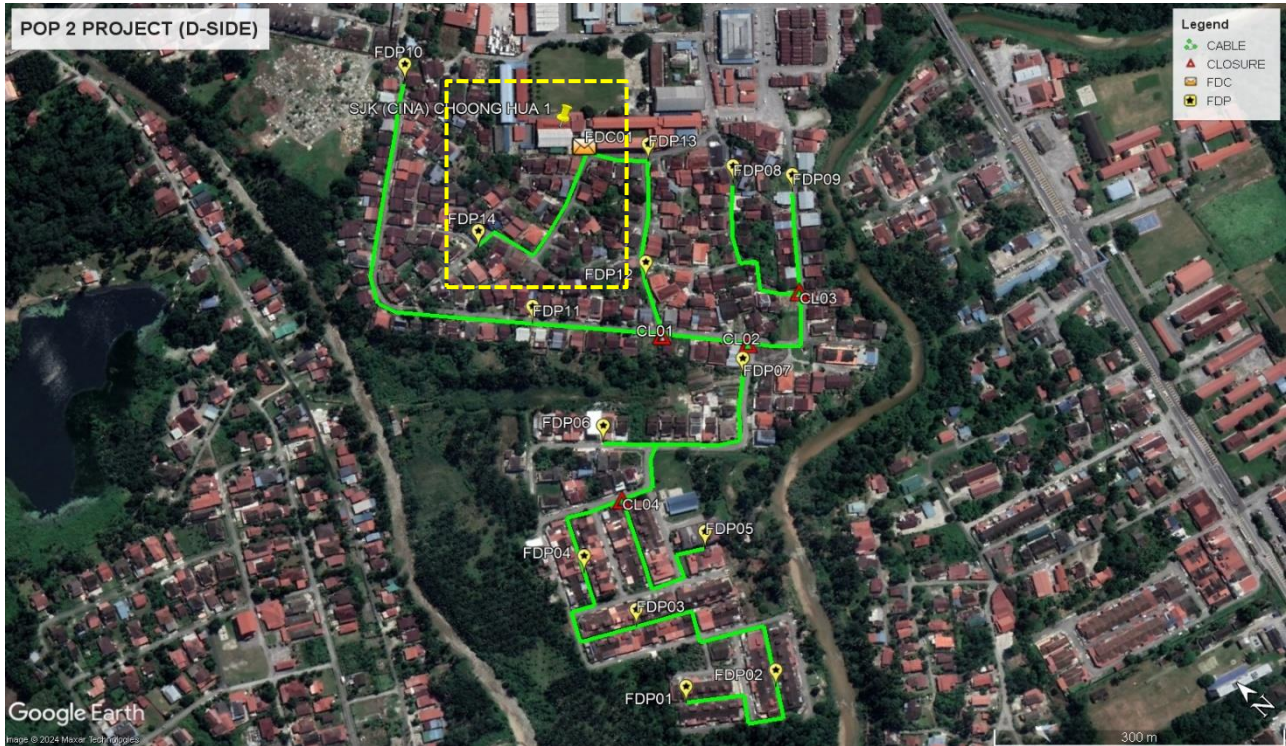


**Green Colour – JKR**

**Red Colour – Majlis Daerah Tapah**

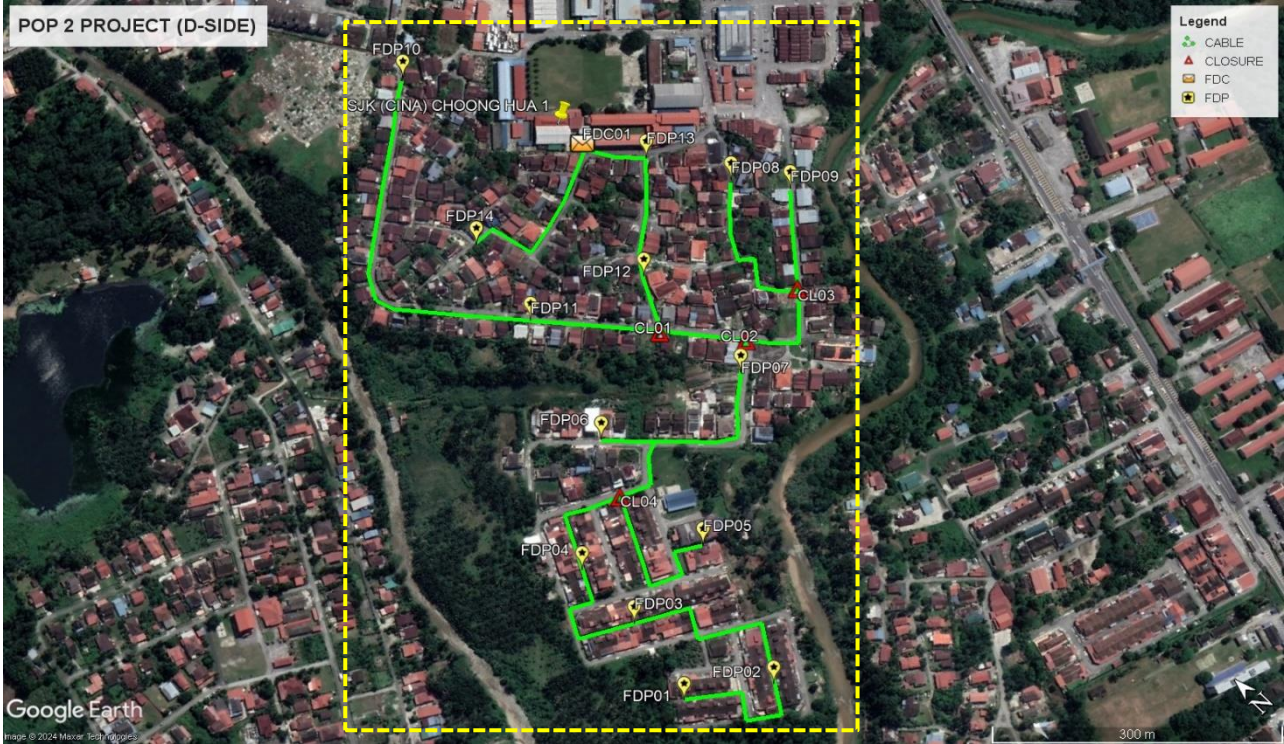
Site Plan – KMZ Routing (All site area)

Route 1



Route 1.1

**Route 2**

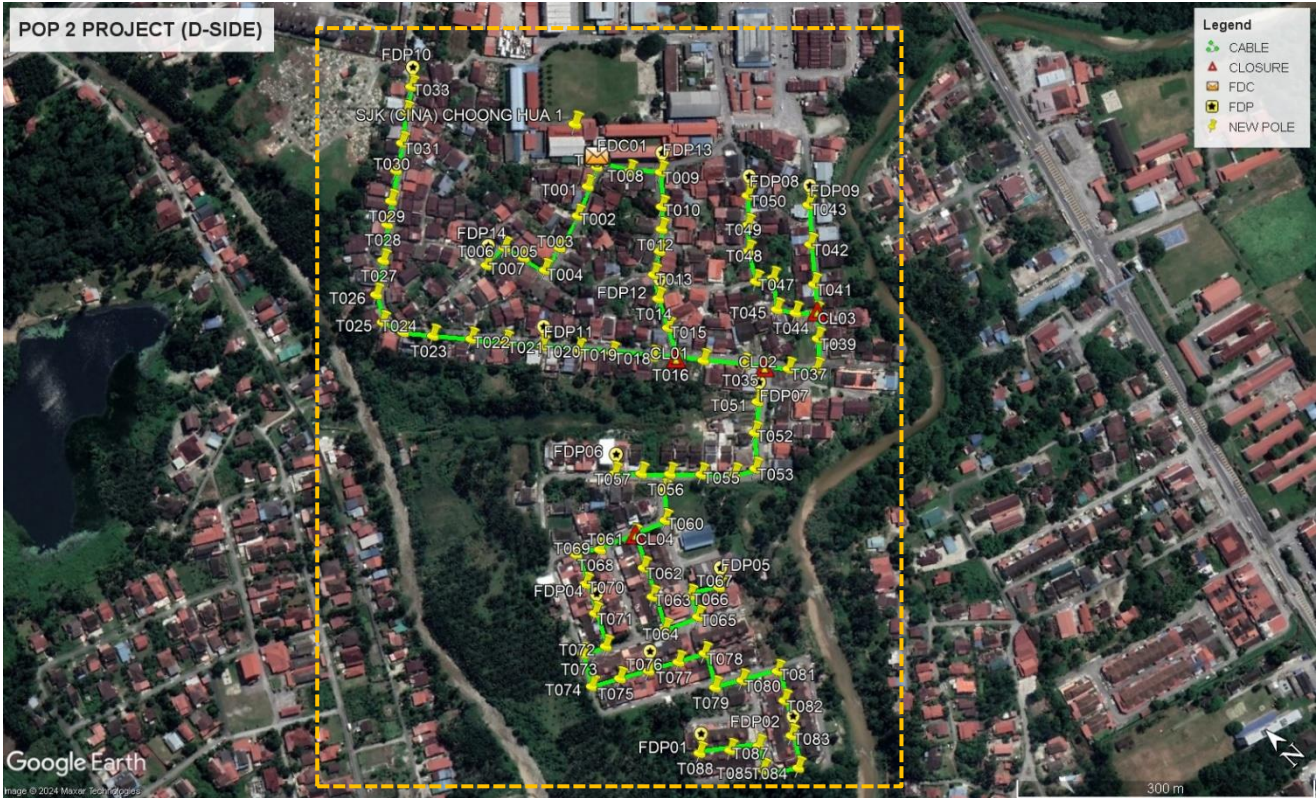


**Route 2.1**



**Route 2.2**

**Site Plan – KMZ Routing (Proposed new Pole)**



**Proposed New Pole Lat & Long Table**

No.	Label	Pole & Manhole ID	Latitude	Longitude	Local Authority
1	OLT / FDC	T000	4.111458	101.285096	MAJLIS DAERAH TAPAH
2	FDP01	T088	4.107058	101.281971	MAJLIS DAERAH TAPAH
3	FDP02	T083	4.106578	101.282672	MAJLIS DAERAH TAPAH
4	FDP03	T076	4.107912	101.282176	MAJLIS DAERAH TAPAH
5	FDP04	T071	4.108623	101.282205	MAJLIS DAERAH TAPAH
6	FDP05	T067	4.107991	101.283166	MAJLIS DAERAH TAPAH
7	FDP06	T058	4.109386	101.283231	MAJLIS DAERAH TAPAH
8	FDP07	T051	4.108925	101.284610	MAJLIS DAERAH TAPAH
9	FDP08	T050	4.110304	101.285877	MAJLIS DAERAH TAPAH
10	FDP09	T043	4.109854	101.286204	MAJLIS DAERAH TAPAH
11	FDP10	T033	4.113164	101.284428	MAJLIS DAERAH TAPAH
12	FDP11	T020	4.110668	101.283592	MAJLIS DAERAH TAPAH
13	FDP12	T014	4.110222	101.284640	MAJLIS DAERAH TAPAH
14	FDP13	T009	4.111013	101.285472	MAJLIS DAERAH TAPAH
14	FDP14	T007	4.111540	101.283758	MAJLIS DAERAH TAPAH
15	CL01	T016	4.109727	101.284353	MAJLIS DAERAH TAPAH
16	CL02	T036	4.109102	101.284863	MAJLIS DAERAH TAPAH
17	CL03	T040	4.109118	101.285558	MAJLIS DAERAH TAPAH
18	CL04	T061	4.108866	101.282956	MAJLIS DAERAH TAPAH

**Overall Pole (Proposed New)**

No.	Pole & Manhole ID	Distance	Latitude	Longitude	Local Authority
1	T000	0	4.111458	101.285096	MAJLIS DAERAH TAPAH
2	T001	25	4.111391	101.284914	MAJLIS DAERAH TAPAH
3	T002	35	4.111270	101.284659	MAJLIS DAERAH TAPAH
4	T003	35	4.111182	101.284337	MAJLIS DAERAH TAPAH
5	T004	30	4.111134	101.284099	MAJLIS DAERAH TAPAH
6	T005	25	4.111348	101.284042	MAJLIS DAERAH TAPAH
7	T006	25	4.111535	101.283983	MAJLIS DAERAH TAPAH
8	T007	30	4.111540	101.283758	MAJLIS DAERAH TAPAH
9	T008	35	4.111217	101.285279	MAJLIS DAERAH TAPAH
10	T009	35	4.111013	101.285472	MAJLIS DAERAH TAPAH
11	T010	35	4.110786	101.285255	MAJLIS DAERAH TAPAH
12	T011	30	4.110644	101.285110	MAJLIS DAERAH TAPAH
13	T012	25	4.110516	101.284954	MAJLIS DAERAH TAPAH
14	T013	25	4.110403	101.284766	MAJLIS DAERAH TAPAH
15	T014	25	4.110222	101.284640	MAJLIS DAERAH TAPAH
16	T015	35	4.109973	101.284514	MAJLIS DAERAH TAPAH
17	T016	30	4.109727	101.284353	MAJLIS DAERAH TAPAH
18	T017	30	4.109884	101.284230	MAJLIS DAERAH TAPAH
19	T018	40	4.110173	101.283994	MAJLIS DAERAH TAPAH
20	T019	35	4.110414	101.283803	MAJLIS DAERAH TAPAH
21	T020	40	4.110668	101.283592	MAJLIS DAERAH TAPAH
22	T021	40	4.110930	101.283385	MAJLIS DAERAH TAPAH
23	T022	35	4.111169	101.283184	MAJLIS DAERAH TAPAH
24	T023	40	4.111436	101.282959	MAJLIS DAERAH TAPAH
25	T024	30	4.111650	101.282792	MAJLIS DAERAH TAPAH
26	T025	25	4.111845	101.282725	MAJLIS DAERAH TAPAH
27	T026	35	4.112062	101.282862	MAJLIS DAERAH TAPAH
28	T027	35	4.112236	101.283128	MAJLIS DAERAH TAPAH
29	T028	40	4.112439	101.283385	MAJLIS DAERAH TAPAH
30	T029	25	4.112565	101.283562	MAJLIS DAERAH TAPAH
31	T030	35	4.112728	101.283790	MAJLIS DAERAH TAPAH
32	T031	30	4.112865	101.284005	MAJLIS DAERAH TAPAH
33	T032	35	4.113033	101.284230	MAJLIS DAERAH TAPAH
34	T033	30	4.113164	101.284428	MAJLIS DAERAH TAPAH
35	T034	30	4.109538	101.284530	MAJLIS DAERAH TAPAH
36	T035	40	4.109244	101.284764	MAJLIS DAERAH TAPAH
37	T036	25	4.109102	101.284863	MAJLIS DAERAH TAPAH
38	T037	30	4.108936	101.285021	MAJLIS DAERAH TAPAH
39	T038	30	4.108754	101.285201	MAJLIS DAERAH TAPAH
40	T039	30	4.108941	101.285402	MAJLIS DAERAH TAPAH
41	T040	30	4.109118	101.285558	MAJLIS DAERAH TAPAH

42	T041	30	4.109311	101.285729	MAJLIS DAERAH TAPAH
43	T042	40	4.109590	101.285962	MAJLIS DAERAH TAPAH
44	T043	40	4.109854	101.286204	MAJLIS DAERAH TAPAH
45	T044	25	4.109249	101.285426	MAJLIS DAERAH TAPAH
46	T045	25	4.109390	101.285329	MAJLIS DAERAH TAPAH
47	T046	35	4.109615	101.285505	MAJLIS DAERAH TAPAH
48	T047	20	4.109703	101.285376	MAJLIS DAERAH TAPAH
49	T048	35	4.109944	101.285520	MAJLIS DAERAH TAPAH
50	T049	30	4.110115	101.285685	MAJLIS DAERAH TAPAH
51	T050	35	4.110304	101.285877	MAJLIS DAERAH TAPAH
52	T051	35	4.108925	101.284610	MAJLIS DAERAH TAPAH
53	T052	35	4.108747	101.284391	MAJLIS DAERAH TAPAH
54	T053	40	4.108513	101.284163	MAJLIS DAERAH TAPAH
55	T054	25	4.108610	101.283992	MAJLIS DAERAH TAPAH
56	T055	30	4.108824	101.283780	MAJLIS DAERAH TAPAH
57	T056	35	4.109028	101.283583	MAJLIS DAERAH TAPAH
58	T057	30	4.109215	101.283403	MAJLIS DAERAH TAPAH
59	T058	30	4.109386	101.283231	MAJLIS DAERAH TAPAH
60	T059	20	4.108963	101.283437	MAJLIS DAERAH TAPAH
61	T060	35	4.108763	101.283254	MAJLIS DAERAH TAPAH
62	T061	35	4.108866	101.282956	MAJLIS DAERAH TAPAH
63	T062	35	4.108599	101.282810	MAJLIS DAERAH TAPAH
64	T063	35	4.108358	101.282679	MAJLIS DAERAH TAPAH
65	T064	35	4.108068	101.282548	MAJLIS DAERAH TAPAH
66	T065	35	4.107937	101.282841	MAJLIS DAERAH TAPAH
67	T066	25	4.108122	101.282925	MAJLIS DAERAH TAPAH
68	T067	35	4.107991	101.283166	MAJLIS DAERAH TAPAH
69	T068	40	4.108997	101.282647	MAJLIS DAERAH TAPAH
70	T069	25	4.109116	101.282462	MAJLIS DAERAH TAPAH
71	T070	35	4.108869	101.282334	MAJLIS DAERAH TAPAH
72	T071	35	4.108623	101.282205	MAJLIS DAERAH TAPAH
73	T072	35	4.108342	101.282061	MAJLIS DAERAH TAPAH
74	T073	25	4.108439	101.281869	MAJLIS DAERAH TAPAH
75	T074	35	4.108176	101.281714	MAJLIS DAERAH TAPAH
76	T075	30	4.108047	101.281944	MAJLIS DAERAH TAPAH
77	T076	30	4.107912	101.282176	MAJLIS DAERAH TAPAH
78	T077	30	4.107775	101.282424	MAJLIS DAERAH TAPAH
79	T078	30	4.107663	101.282647	MAJLIS DAERAH TAPAH
80	T079	40	4.107377	101.282494	MAJLIS DAERAH TAPAH
81	T080	30	4.107247	101.282713	MAJLIS DAERAH TAPAH
82	T081	40	4.107078	101.282999	MAJLIS DAERAH TAPAH
83	T082	35	4.106846	101.282853	MAJLIS DAERAH TAPAH
84	T083	35	4.106578	101.282672	MAJLIS DAERAH TAPAH
85	T084	35	4.106329	101.282507	MAJLIS DAERAH TAPAH
86	T085	40	4.106542	101.282271	MAJLIS DAERAH TAPAH

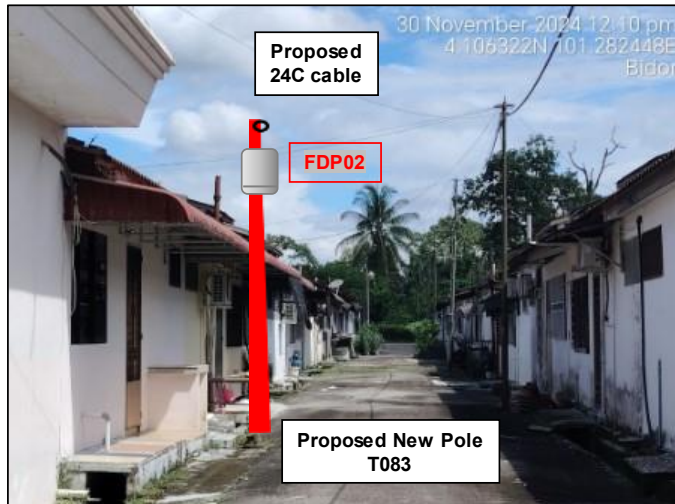
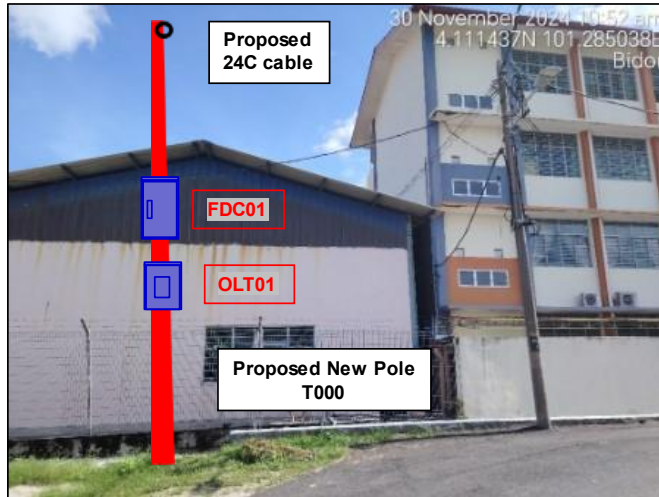


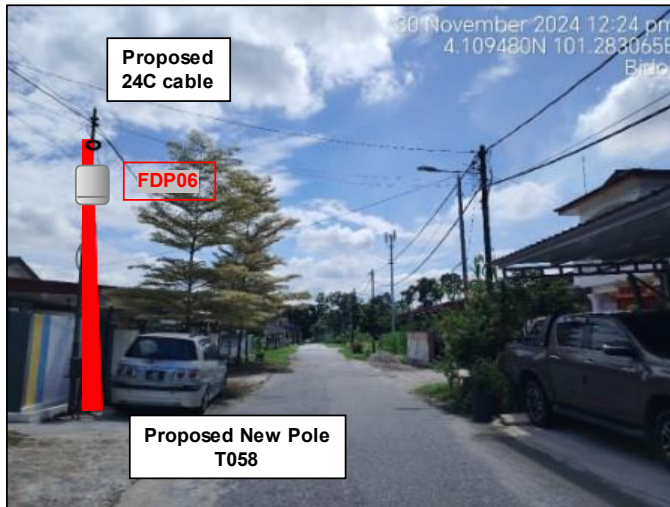
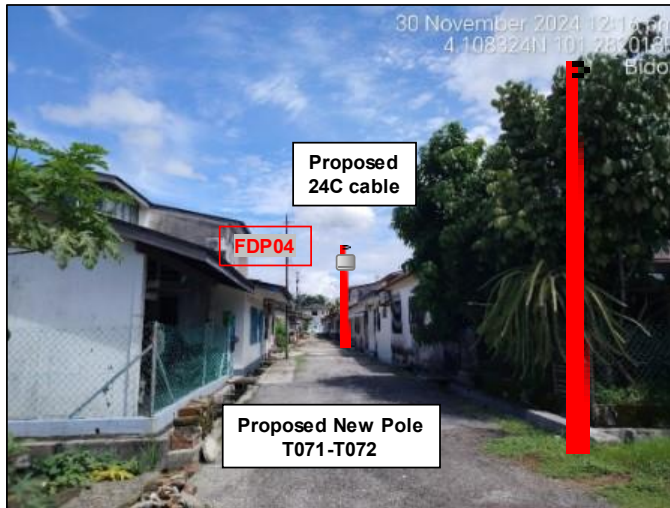
PROJEK PENYEDIAAN DAN PENYELENGGARAAN POINT OF PRESENCE (POP) FASA 2: HAB INFRASTRUKTUR GENTIAN OPTIK BERHAMPIRAN DENGAN SEKOLAH, KAWASAN PERINDUSTRIAN, PREMIS KERAJAAN DAN KOMUNITI SEKITARNYA OLEH KEMENTERIAN KOMUNIKASI MALAYSIA - ZON UTARA (KKMM.400-11/17/132(1))

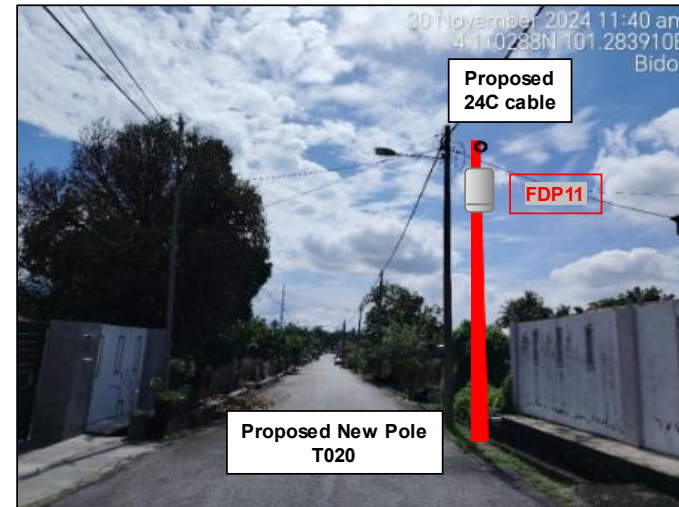
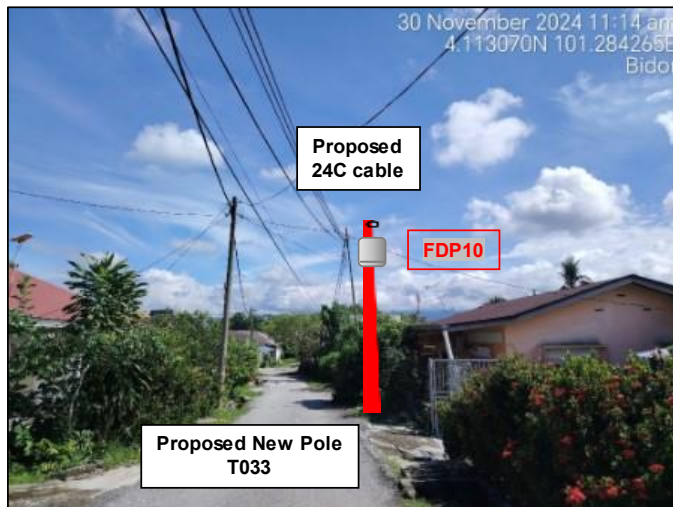


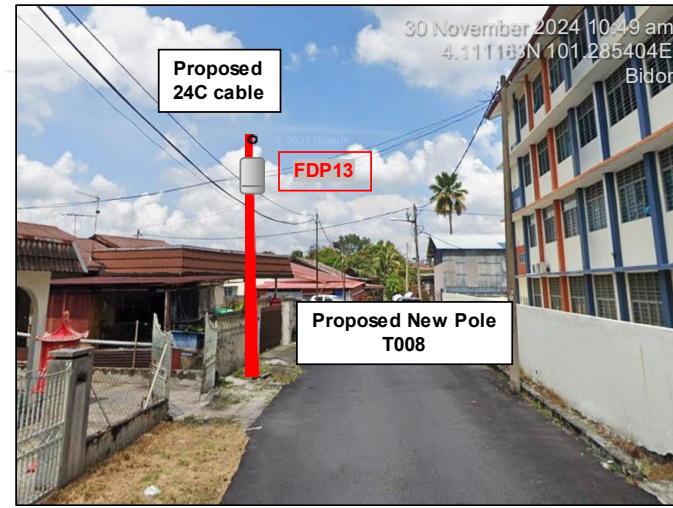
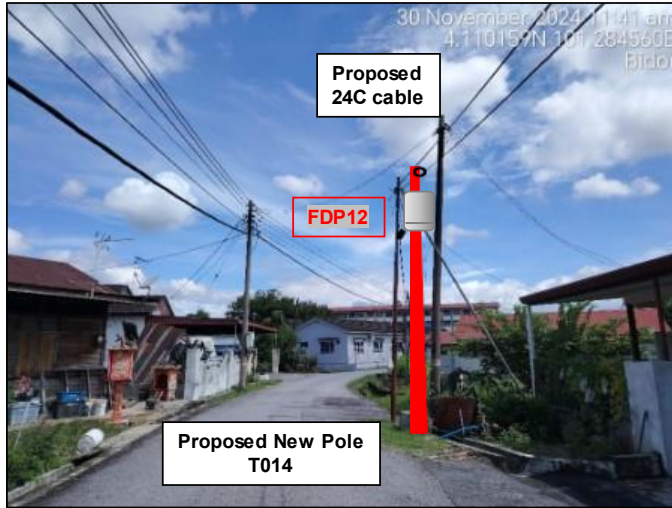
87	T086	25	4.106725	101.282395	MAJLIS DAERAH TAPAH
88	T087	30	4.106880	101.282187	MAJLIS DAERAH TAPAH
89	T088	30	4.107058	101.281971	MAJLIS DAERAH TAPAH

Site Photos - Proposed to install pole



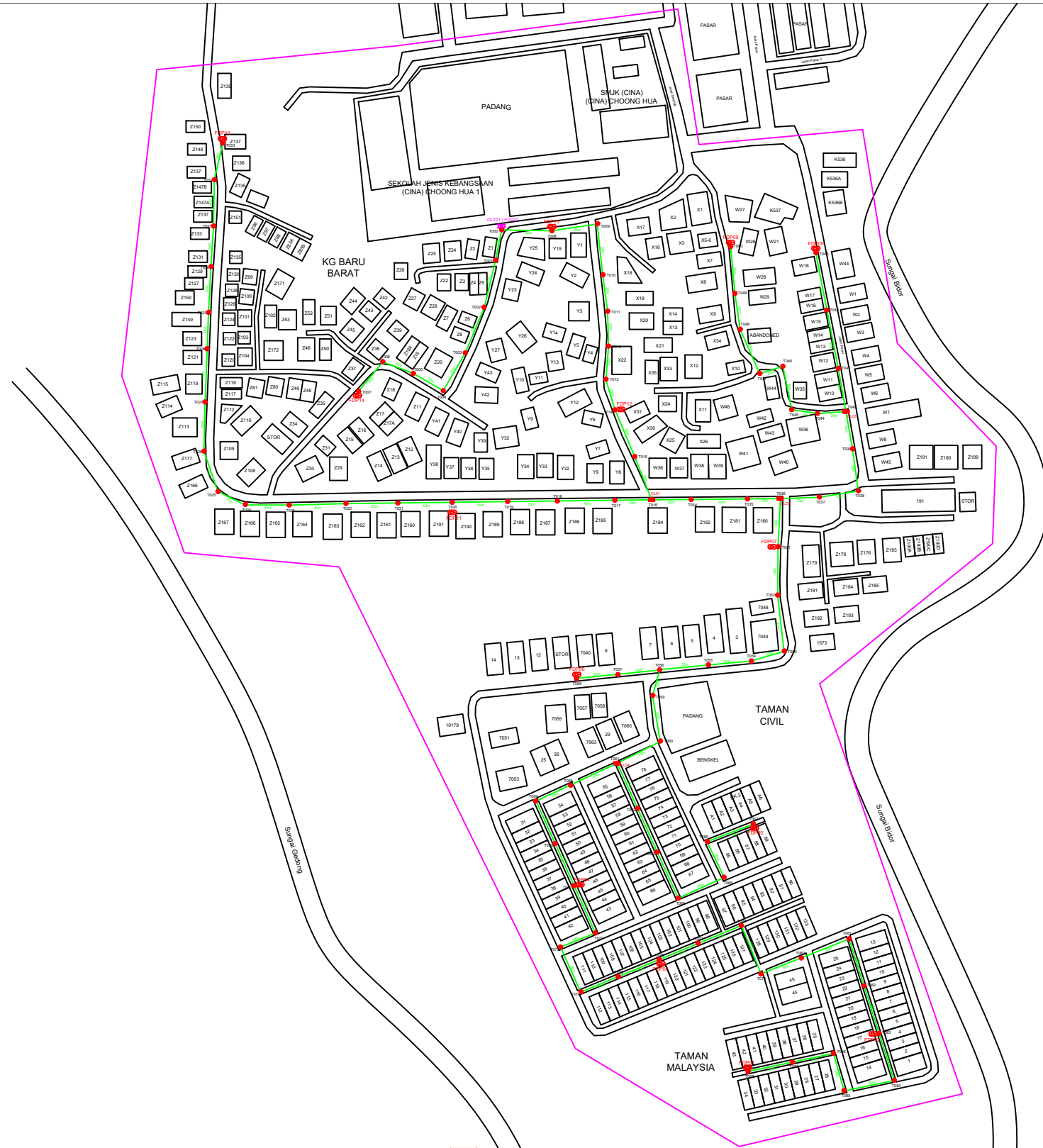






3rd Parties Dependencies

No.	Local Council/ Authority	Remark
1	Majlis Daerah Tapah	
2		
3		
4		
5		
6		



12C FOC	Installed 1:4 / 1:8 / 1:32 splitter	89	Installed Pole (9m)	89	IB30 New Manhole (PIT)	Micro-Trenching (Meter)	MH1 MH NO.
24C FOC	Installed Patch Cord	171	Installed Pole (7.5M)	171	C7 New Manhole(JRC7)	Temporary Infra (Meter)	TKS-1 Existing TNB Pole NO.
48C FOC	FDC	14	Installed Pole (6.7M)	14	FDP Boundary	Loop / Coil (Meter)	P001 New Pole NO.
96C FOC	Closure	14	Existing TNB Pole	14	HDD (Meter)	# Active Outdoor Cabinet	CL01 Closure NO.
144C FOC	Existing Closure		Installed Riser		Open Cut (Meter)	C01 FDC NO.	DP1 FDP NO.


ACTUAL HOMEPASS :	
-------------------	--

KEY PLAN:

PROJECT OWNER:




MAIN CONTRACTOR:



A member of OCK Group Berhad

SUB-CONTRACTOR:

PROJECT TITLE:  
 CONTRACTOR FOR SURVEY, TECHNICAL  
 PROPOSAL AND WAYLEAVE & PERMIT APPROVAL  
 -POP2 PROJECT

DRAWING TITLE:  
 Construction Drawing  
 ABC0060  
 SJK (CINA) CHOONG HUA 1

PROJECT PHASE:  
 POP 2

Design By :	Date :	7/12/2024
Drawn By :	Scale :	NTS
Checked By :	Job Number :	JOB/NUMBER
DRAWING NUMBER :	Sheet :	
ABC0060-CD-01	1/3	
THIS PRINT AND ITS COPYRIGHT ARE THE PROPERTY OF STEADCOM SDN BHD		
Size : A3		






12C FOC	Installed 1:4 / 1:8 / 1:32 splitter	Installed Pole (9m)	Suspension	89	IB30	New Manhole (PIT)	Micro-Trenching (Meter)	MH1	MH NO.
24C FOC	2985m Installed Patch Cord	Installed Pole (7.5M)	Tension	171	C7	New Manhole(JRC7)	Temporary Infra (Meter)	TKS-1	Existing TNB Pole NO.
48C FOC	FDC	Installed Pole (6.7M)	Pole Ring	14		FDP Boundary	Loop / Coil (Meter)	P001	New Pole NO.
96C FOC	Closure	Existing TNB Pole	FDP with (1:8) splitter	14		HDD (Meter)	#	CL01	Closure NO.
144C FOC	Existing Closure	Installed Riser	Existing Manhole			Open Cut (Meter)	C01	DP1	FDC NO.


ACTUAL HOMEPASS :

KEY PLAN:

PROJECT OWNER:

MAIN CONTRACTOR:



A member of OCK Group Berhad

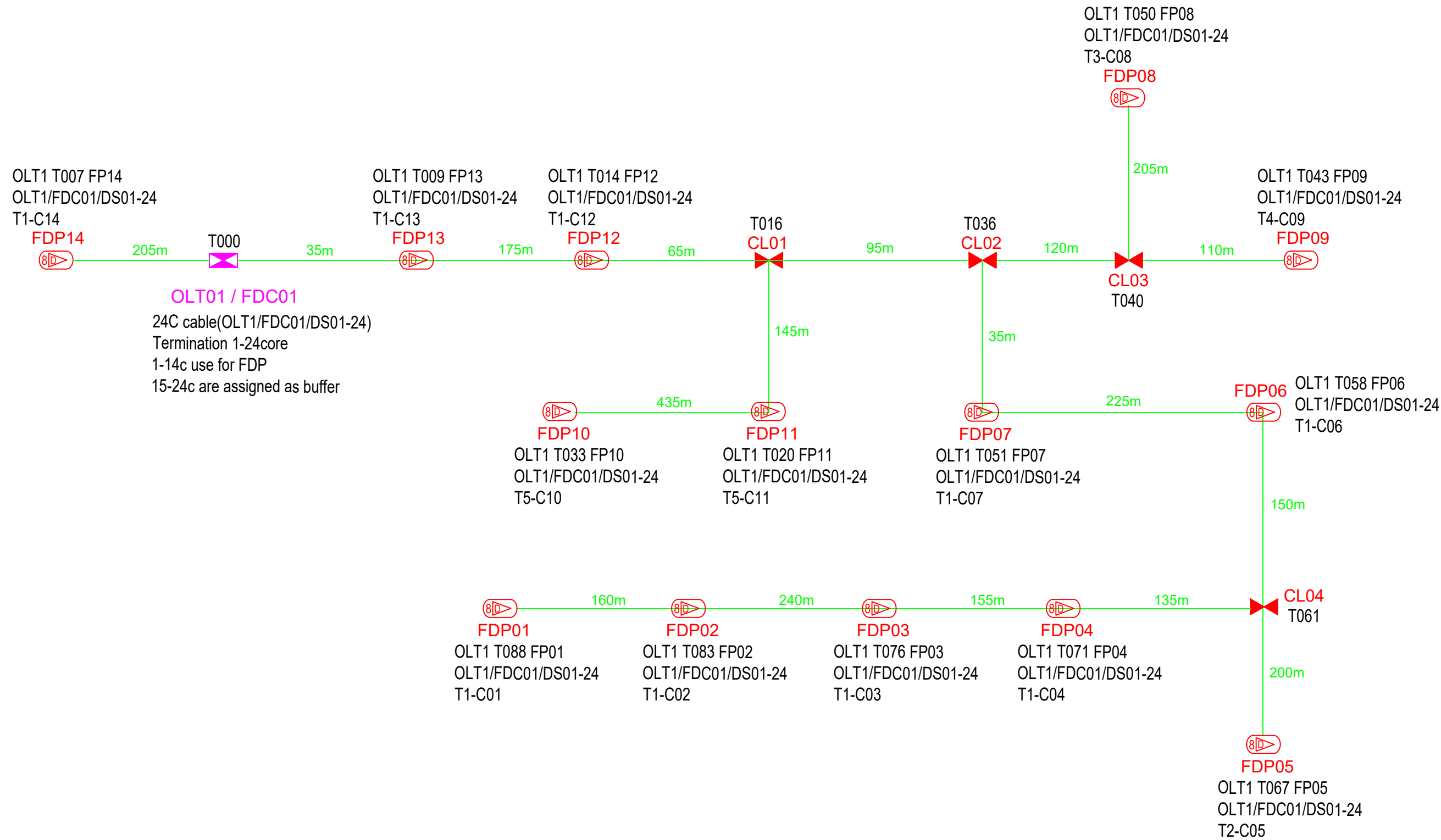
SUB-CONTRACTOR:

PROJECT TITLE:  
 CONTRACTOR FOR SURVEY, TECHNICAL  
 PROPOSAL AND WAYLEAVE & PERMIT APPROVAL  
 -POP2 PROJECT

DRAWING TITLE:  
 Construction Drawing  
 ABC0060  
 SJK (CINA) CHOONG HUA 1

PROJECT PHASE:  
 POP 2

Design By :	Date :	7/12/2024
Drawn By :	Scale :	NTS
Checked By :	Job Number :	JOB/NUMBER
DRAWING NUMBER :	Sheet :	
ABC0060-CD-01	3/3	
THIS PRINT AND ITS COPYRIGHT ARE THE PROPERTY OF STEADCOM SDN BHD		Size : A3



12C FOC	Installed 1:4 / 1:8 / 1:32 splitter	89	JB30	New Manhole (PIT)	Micro-Trenching (Meter)	MH1	MH NO.
24C FOC	Installed Patch Cord	171	C7	New Manhole(JRC7)	Temporary Infra (Meter)	TKS-1	Existing TNB Pole NO.
48C FOC	FDC	14		FDP Boundary	Loop / Coil (Meter)	P001	New Pole NO.
96C FOC	Closure	14		HDD (Meter)	#	CL01	Closure NO.
144C FOC	Existing Closure			Open Cut (Meter)	C01	DP1	FDP NO.

ACTUAL HOMEPASS :

KEY PLAN:	PROJECT OWNER:	MAIN CONTRACTOR:	SUB-CONTRACTOR:	PROJECT TITLE:	DRAWING TITLE:	Design By :	Date :
				CONTRACTOR FOR SURVEY, TECHNICAL PROPOSAL AND WAYLEAVE & PERMIT APPROVAL -POP2 PROJECT	SLD Drawing ABC0060 SJK (CINA) CHOONG HUA 1	Drawn By :	7/12/2024
					PROJECT PHASE:	Checked By :	Scale :
					POP 2	DRAWING NUMBER :	Job Number :
						ABC0060-CD-01	JOB/NUMBER
							Sheet :
							1/1
							Size :
							A3

THIS PRINT AND ITS COPYRIGHT ARE THE PROPERTY OF STEADCOM SDN BHD