

## TECHNICAL PROPOSAL

### POP2 AEE 3045 SEKOLAH MENENGAH KEBANGSAAN MUDZAFFAR SHAH (D-SIDE)

Company Name	: SEGALA DELIMA (M) SDN BHD
Company Address	: No. 8, Jalan Ampang Baru 6B, Pusat Perdagangan Baru, 31350 Ipoh, Perak
Prepared By	: Nasrohaizan Bin Mustaffa
Date	: 11/12/2024



#### Starting Point

Site / Boundary Name	: SEKOLAH MENENGAH KEBANGSAAN MUDZAFFAR SHAH
District	: SIMPANG EMPAT SEMANGGOL
Postcode	: 34400
State	: PERAK
GPS Coordinate	: <a href="#">4.950830</a> , <a href="#">100.622122</a>
LRD	: A

#### End Point

Site / Boundary Name	: JALAN GULA
Address	: TAMAN SERI SEMANGGOL
District	: SIMPANG EMPAT SEMANGGOL
Postcode	: 34400
State	: Perak
GPS Coordinate	: <a href="#">4.950581</a> , <a href="#">100.626595</a>
LRD	: B

## 1.0 WORK SUMMARY

NO	PROPOSED DISTANCE AND METHOD	UNIT	QUANTITY
1	Horizontal Directional Drilling (HDD)	m	0
2	Carriage Way Open Trench(CW)	m	0
3	Grass Verge Open Trenching (GV)	m	0
4	Micro Trenching (MT)	m	0
Total			0

NO	OTHER INFORMATION	UNIT	QUANTITY
1	Installation of Short Span ADSS Fiber Cables	m	1500
2	Install New Pole	ea	52
3	Install New JRC7 Manhole	ea	0
4	Install GI Riser 100mm	ea	0
5	Install Fiber Distribution Point and Closure (Splicing, Termination and Testing)	ea	13
6	Estimated Time Required for Completion	days	30

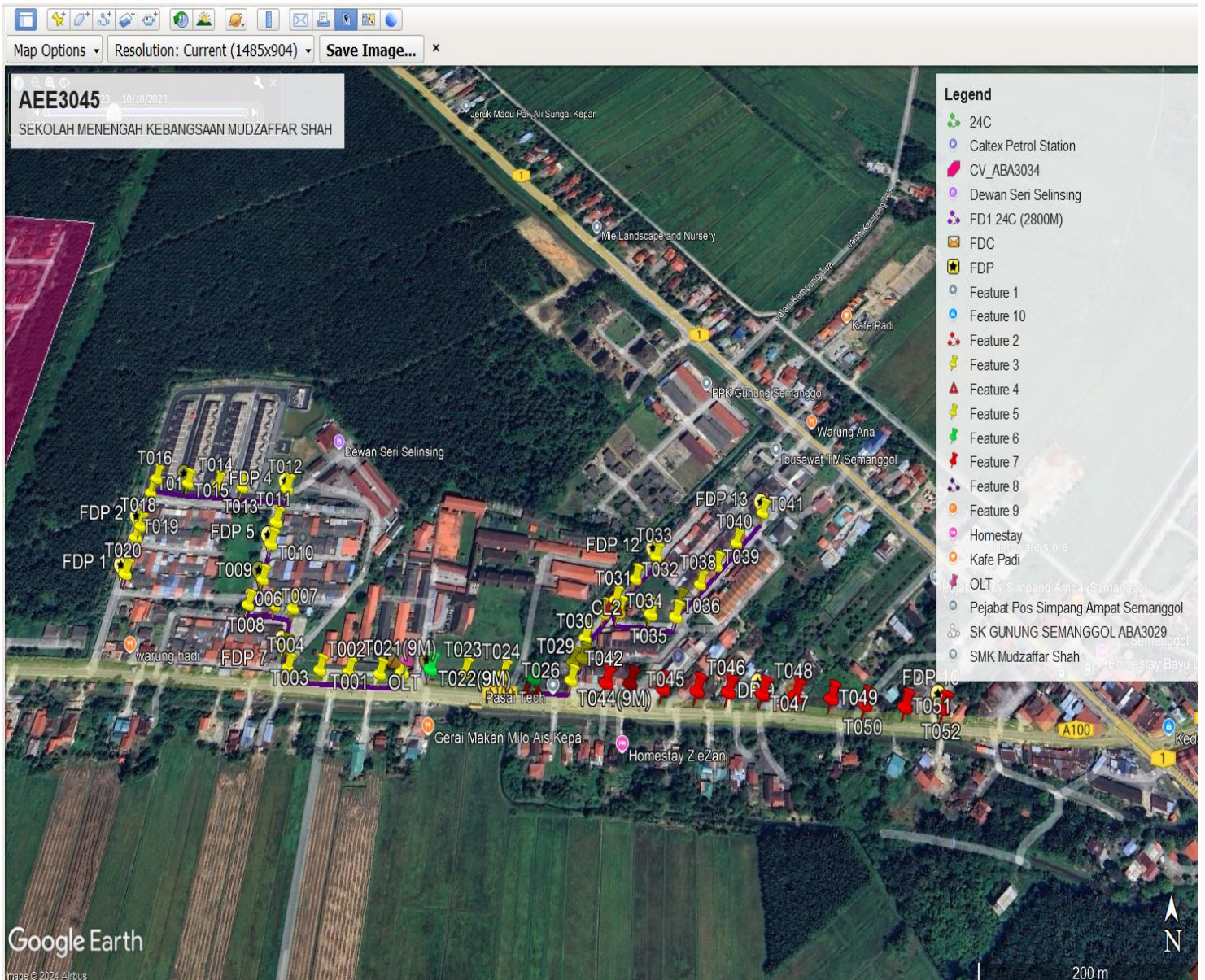
## 2.0 LOCAL AUTHORITY SUMMARY

Daerah Batu Gajah

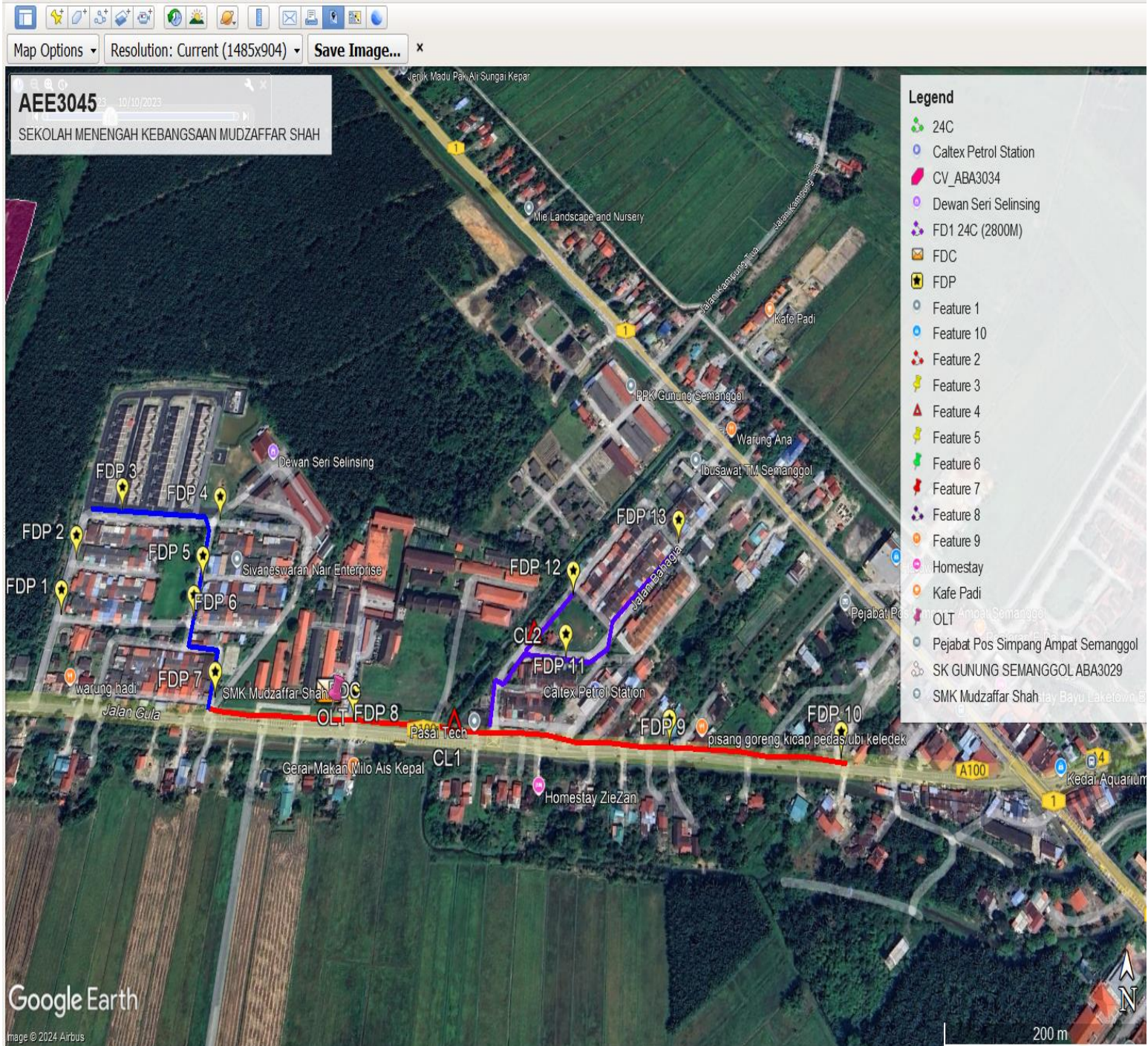
NO	ITEMS	Owner	Quantity	Distance (m)
1	HDD	JKR	-	-
		Majlis	-	-
		Estate / Private Land	-	-
2	New Pole	JKR	21	680
		Majlis	31	820
		Estate / Private Land	-	-
<b>Total Distance (m)</b>				<b>1500</b>

### 3.0 SITE PLAN (KMZ)

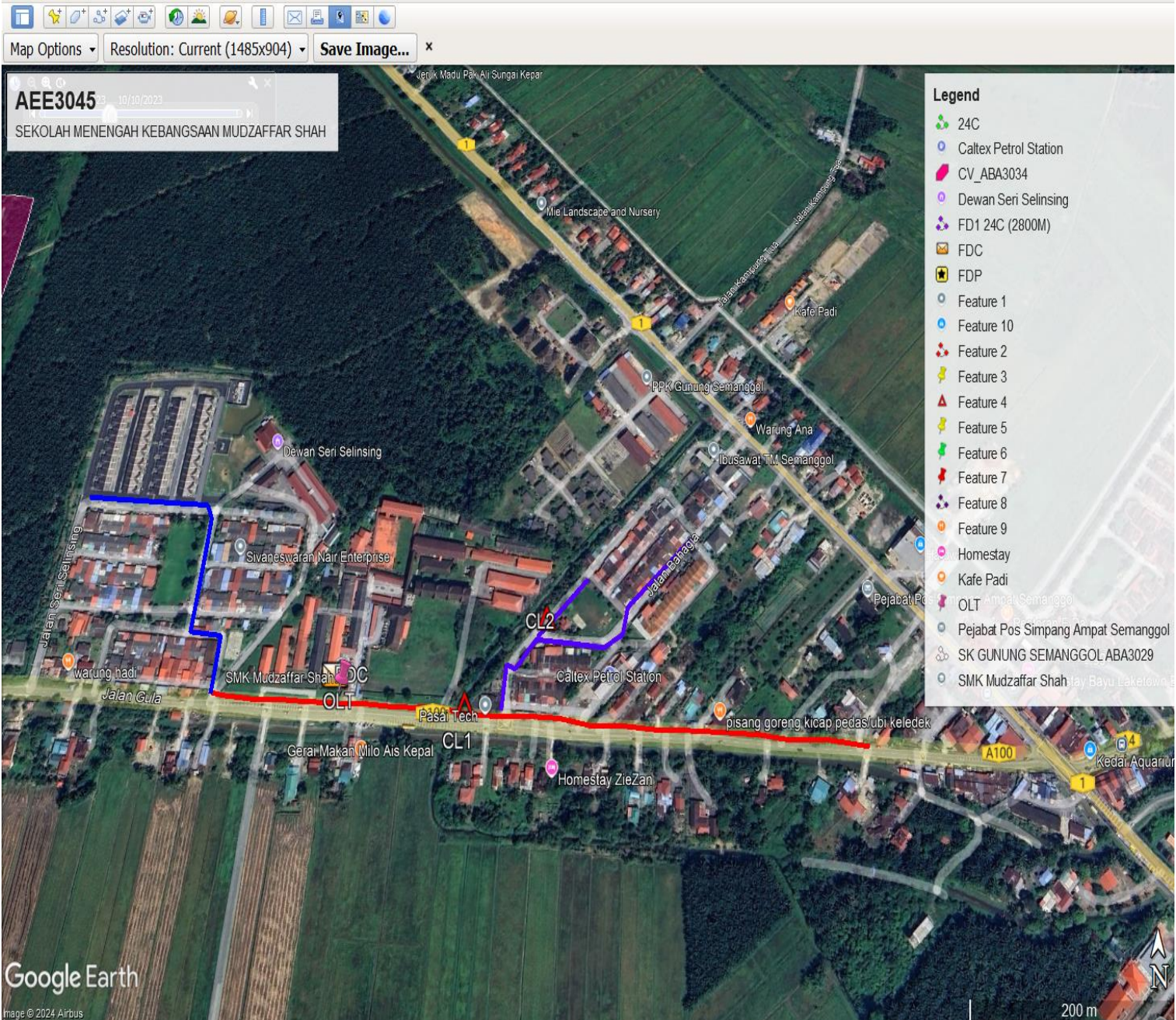
#### 3.1 Overview Site Area (Propose New Pole)



### 3.2 Proposed FDP and Closure



### 3.3 Site Plan - KMZ Routing (All Local Authority)



Red Colour - JKR

Road Blue Colour - Majlis Road

### 3.0 PROPOSED NEW MANHOLE

Proposed New Manhole Coordinate					
No.	Manhole Number	Distance (m)	Latitude	Longitude	Local Authority
1	MH01	-	-	-	-
2	MH02	-	-	-	-

### 4.0 EXITING POLE

Exiting Pole Coordinate					
No.	Pole Number	Distance (m)	Latitude	Longitude	Local Authority
1	T001	30.00	4.950797	100.622011	JKR Daerah Kerian
2	T002	30.00	4.950814	100.621722	JKR Daerah Kerian
3	T003	30.00	4.950828	100.621456	JKR Daerah Kerian
4	T004	30.00	4.950847	100.621158	JKR Daerah Kerian
5	T005	30.00	4.951011	100.621104	Majlis Daerah Kerian
6	T006	30.00	4.951364	100.621111	Majlis Daerah Kerian
7	T007	30.00	4.951393	100.620930	Majlis Daerah Kerian
8	T008	30.00	4.951399	100.620675	Majlis Daerah Kerian
9	T009	30.00	4.951630	100.620769	Majlis Daerah Kerian
10	T010	30.00	4.951947	100.620789	Majlis Daerah Kerian
11	T011	30.00	4.952153	100.620803	Majlis Daerah Kerian
12	T012	30.00	4.952468	100.620858	Majlis Daerah Kerian
13	T013	30.00	4.952497	100.620403	Majlis Daerah Kerian
14	T014	30.00	4.952519	100.620147	Majlis Daerah Kerian
15	T015	30.00	4.952544	100.619836	Majlis Daerah Kerian
16	T016	30.00	4.952575	100.619517	Majlis Daerah Kerian
17	T017	30.00	4.952436	100.619492	Majlis Daerah Kerian
18	T018	30.00	4.952108	100.619472	Majlis Daerah Kerian
19	T019	30.00	4.951986	100.619456	Majlis Daerah Kerian
20	T020	30.00	4.951650	100.619442	Majlis Daerah Kerian
21	T021	30.00	4.950793	100.622217	JKR Daerah Kerian
22	T022	30.00	4.950822	100.622475	JKR Daerah Kerian
23	T023	30.00	4.950808	100.622794	JKR Daerah Kerian
24	T024	30.00	4.950792	100.623150	JKR Daerah Kerian
25	T025	30.00	4.950746	100.623430	JKR Daerah Kerian
26	T026	30.00	4.950742	100.623772	JKR Daerah Kerian
27	T027	30.00	4.950894	100.623786	Majlis Daerah Kerian
28	T028	30.00	4.950931	100.623875	Majlis Daerah Kerian
29	T029	30.00	4.951103	100.623897	Majlis Daerah Kerian
30	T030	30.00	4.951319	100.624075	Majlis Daerah Kerian
31	T031	30.00	4.951436	100.624183	Majlis Daerah Kerian
32	T032	30.00	4.951628	100.624378	Majlis Daerah Kerian

33	T033	30.00	4.951831	100.624583	Majlis Daerah Kerian
34	T034	30.00	4.951318	100.624209	Majlis Daerah Kerian
35	T035	30.00	4.951294	100.624514	Majlis Daerah Kerian
36	T036	30.00	4.951272	100.624750	Majlis Daerah Kerian
37	T037	30.00	4.951405	100.624798	Majlis Daerah Kerian
38	T038	30.00	4.951575	100.625000	Majlis Daerah Kerian
39	T039	30.00	4.951744	100.625169	Majlis Daerah Kerian
40	T040	30.00	4.951958	100.625378	Majlis Daerah Kerian
41	T041	30.00	4.952248	100.625663	Majlis Daerah Kerian

#### 4.1 PROPOSED NEW POLE

Proposed New Pole Coordinate					
No.	Pole Number	Distance (m)	Latitude	Longitude	Local Authority
1	T042	30.00	4.950707	100.624091	JKR Daerah Kerian
2	T043	30.00	4.950703	100.624311	JKR Daerah Kerian
3	T044	30.00	4.950667	100.624609	JKR Daerah Kerian
4	T045	30.00	4.950648	100.624918	JKR Daerah Kerian
5	T046	30.00	4.950633	100.625204	JKR Daerah Kerian
6	T047	30.00	4.950617	100.625511	JKR Daerah Kerian
7	T048	30.00	4.950597	100.625811	JKR Daerah Kerian
8	T049	30.00	4.950582	100.626133	JKR Daerah Kerian
9	T050	30.00	4.950539	100.626436	JKR Daerah Kerian
10	T051	30.00	4.950513	100.626789	JKR Daerah Kerian
11	T052	30.00	4.950494	100.627131	JKR Daerah Kerian

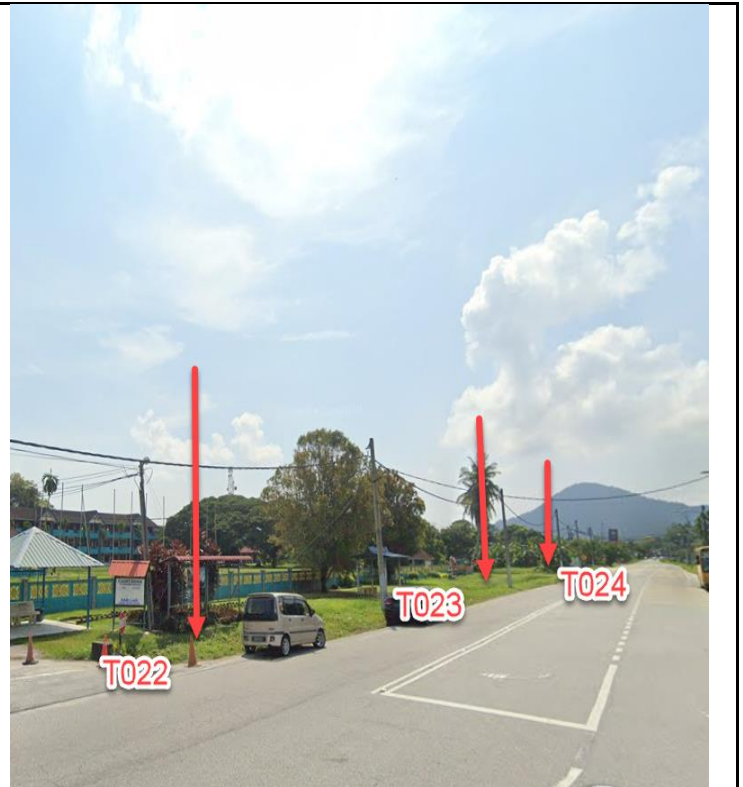
**5.0 SITE PHOTOS - PROPOSED HDD AND NEW MANHOLE (N/A)**

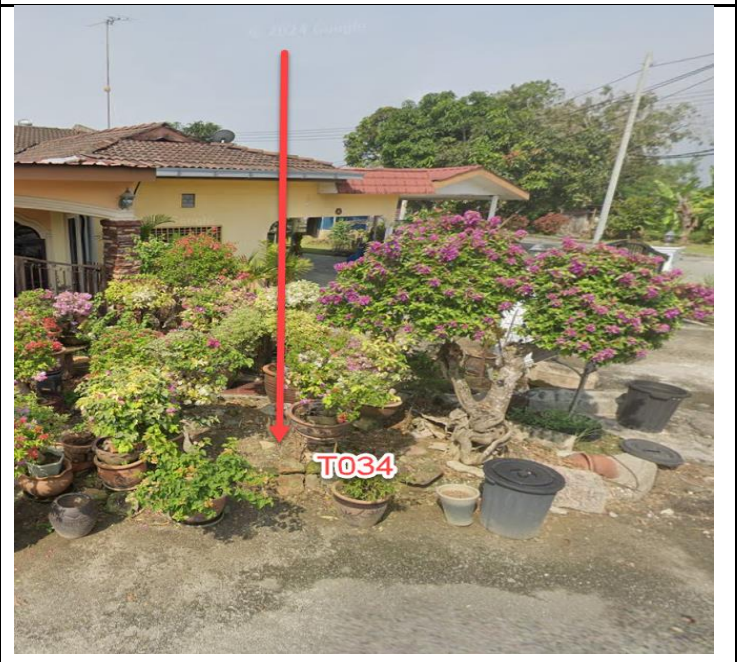
**6.0 SITE PHOTOS - PROPOSED NEW POLE**





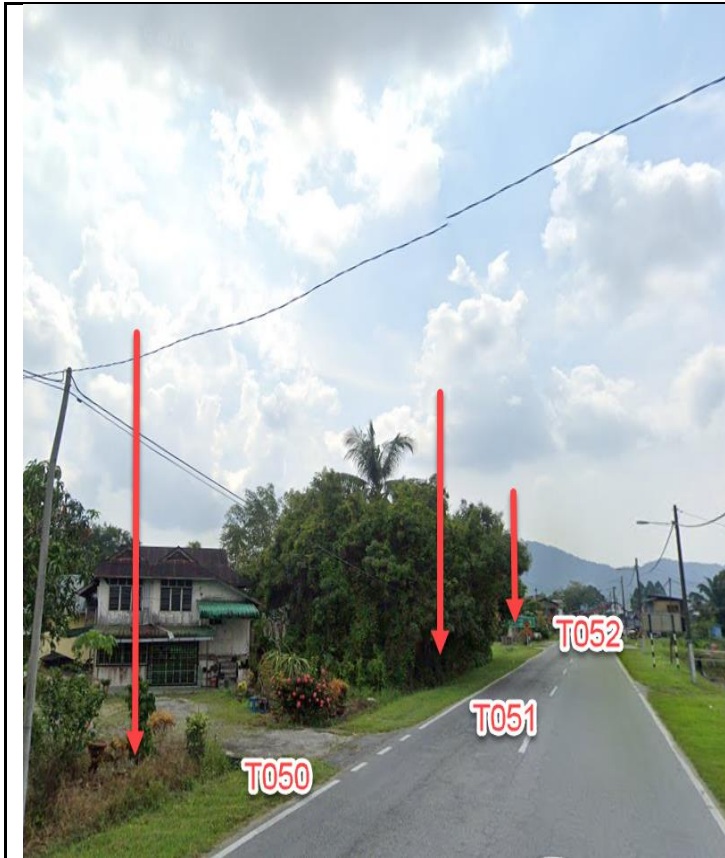












NO	LOCAL COUNCIL / AUTHORITY	REMARK
1	Majlis Daerah Kerian	820m
2	JKR Daerah Kerian	680m



