

## TECHNICAL PROPOSAL

### POP2 ABD1083 SEKOLAH JENIS KEBANGSAAN (TAMIL) KAMPONG TUN SAMBANTHAN

**Company Name** : T&H PANJI EMPIRE SDN BHD  
**Company Address** : 39A Jalan Jelapang 5, Pusat Komersial Jelapang, 30020 Ipoh, Perak Darul Ridzuan.  
**Prepared By** : Muhamad Hasif Bin Mohamed Hanif  
**Date** : 5/12/2024



#### Starting Point

**Site / Boundary Name** : AYER TAWAR  
**Address** : SJKT KAMPONG TUN SAMBANTHAN  
**District** : MANJUNG  
**Postcode** : 32400  
**State** : Perak  
**GPS Coordinate** : 4.336969109, 100.7036314  
**LRD** : A

#### End Point

**Site / Boundary Name** : AYER TAWAR  
**Address** : KAMPUNG TUN SAMBANTHAN  
**District** : MANJUNG  
**Postcode** : 32400  
**State** : Perak  
**GPS Coordinate** : 4.343020, 100.704188  
**LRD** : B



PROJEK PENYEDIAAN DAN PENYELENGGARAAN POINT OF PRESENT (POP) FASA 2: HAB INFRASTRUKTUR GENTIAN OPTIK BERHAMPIRAN DENGAN SEKOLAH, KAWASAN PERINDUSTRIAN, PREMIS KERAJAAN DAN KOMUNITI SEKITARNYA OLEH KEMENTERIAN KOMUNIKASI MALAYSIA - ZON UTARA (KKMM.400-11/17/132(1))



## 1.0 WORK SUMMARY

NO	PROPOSED DISTANCE AND METHOD	UNIT	QUANTITY
1	Horizontal Directional Drilling (HDD)	m	0
2	Carriage Way Open Trench (CW)	m	0
3	Grass Verge Open Trenching (GV)	m	0
4	Micro Trenching (MT)	m	0
Total			0

NO	OTHER INFORMATION	UNIT	QUANTITY
1	Installation of Short Span ADSS Fiber Cables	m	0
2	Install New Pole	ea	112
3	Install New JRC7 Manhole	m	0
4	Install GI Riser 100mm	ea	0
5	Install Fiber Distribution Point	ea	16
6	Closure (Splicing, Termination and Testing)	ea	3



PROJEK PENYEDIAAN DAN PENYELENGGARAAN POINT OF PRESENT (POP) FASA 2: HAB INFRASTUKTUR GENTIAN OPTIK BERHAMPIRAN DENGAN SEKOLAH, KAWASAN PERINDUSTRIAN, PREMIS KERAJAAN DAN KOMUNITI SEKITARNYA OLEH KEMENTERIAN KOMUNIKASI MALAYSIA - ZON UTARA (KKMM.400-11/17/132(1))



**2.0 LOCAL AUTHORITY SUMMARY**

Daerah Manjung

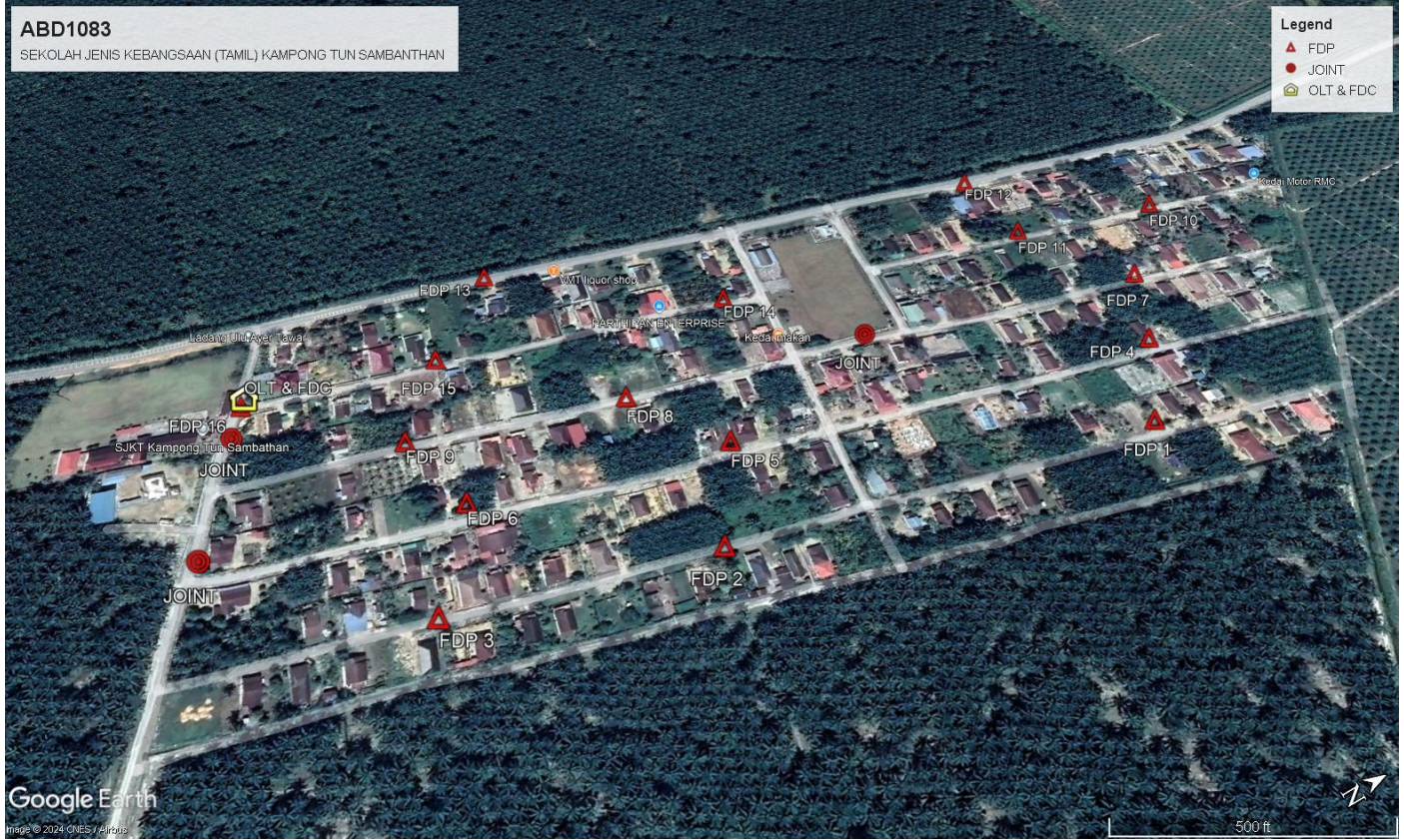
NO	ITEMS	Owner	Quantity	Distance (m)
1	HDD	JKR	-	-
		Majlis	-	-
		Estate / Private Land	-	-
2	New Pole	JKR	-	-
		Majlis	112	3900
		Estate / Private Land	-	-
<b>Total Distance (m)</b>				<b>3900</b>

### 3.0 SITE PLAN (KMZ)

#### 3.1 Overview Site Area



3.2 Overview FDP Location



### 3.3 Site Plan - KMZ Routing (All Local Authority)



Red Colour - Majlis Road



PROJEK PENYEDIAAN DAN PENYELENGGARAAN POINT OF PRESENT (POP) FASA 2: HAB INFRASTRUKTUR GENTIAN OPTIK BERHAMPIRAN DENGAN SEKOLAH, KAWASAN PERINDUSTRIAN, PREMIS KERAJAAN DAN KOMUNITI SEKITARNYA OLEH KEMENTERIAN KOMUNIKASI MALAYSIA - ZON UTARA (KKMM.400-11/17/132(1))



#### 4.0 PROPOSED NEW MANHOLE

Proposed New Manhole Coordinate					
No.	Manhole Number	Distance (m)	Latitude	Longitude	Local Authority
1	MH01	-	-	-	-
2	MH02	-	-	-	-

## 5.0 PROPOSED NEW POLE

Proposed New Pole Coordinate					
No.	Pole Number	Distance (m)	Latitude	Longitude	Local Authority
1	T001 (OLT&FDC)	33	4.337632	100.703692	Majlis Perbandaran Manjung
2	T002 (JOINT 1)	43	4.337503	100.703949	Majlis Perbandaran Manjung
3	T003	28	4.337309	100.704288	Majlis Perbandaran Manjung
4	T004	31	4.337198	100.704510	Majlis Perbandaran Manjung
5	T005 (JOINT 2)	50	4.337081	100.704776	Majlis Perbandaran Manjung
6	T006	37	4.336859	100.705157	Majlis Perbandaran Manjung
7	T007	36	4.336709	100.705455	Majlis Perbandaran Manjung
8	T008	31	4.337016	100.705532	Majlis Perbandaran Manjung
9	T009	32	4.337283	100.705601	Majlis Perbandaran Manjung
10	T010	29	4.337558	100.705659	Majlis Perbandaran Manjung
11	T011	34	4.337814	100.705708	Majlis Perbandaran Manjung
12	T012 (FDP 3)	32	4.338096	100.705796	Majlis Perbandaran Manjung
13	T013	30	4.338369	100.705884	Majlis Perbandaran Manjung
14	T014	31	4.338634	100.705938	Majlis Perbandaran Manjung
15	T015	33	4.338906	100.706005	Majlis Perbandaran Manjung
16	T016	29	4.339190	100.706069	Majlis Perbandaran Manjung
17	T017	28	4.339436	100.706127	Majlis Perbandaran Manjung
18	T018 (FDP 2)	33	4.339679	100.706178	Majlis Perbandaran Manjung
19	T019	32	4.339978	100.706223	Majlis Perbandaran Manjung
20	T020	27	4.340248	100.706304	Majlis Perbandaran Manjung
21	T021	21	4.340487	100.706329	Majlis Perbandaran Manjung
22	T022	25	4.340655	100.706301	Majlis Perbandaran Manjung
23	T023	31	4.340870	100.706366	Majlis Perbandaran Manjung
24	T024	31	4.341139	100.706405	Majlis Perbandaran Manjung
25	T025	34	4.341414	100.706474	Majlis Perbandaran Manjung
26	T026	37	4.341705	100.706546	Majlis Perbandaran Manjung
27	T027	22	4.342030	100.706605	Majlis Perbandaran Manjung
28	T028	32	4.342207	100.706650	Majlis Perbandaran Manjung
29	T029 (FDP 1)	22	4.342475	100.706726	Majlis Perbandaran Manjung
30	T030	24	4.337261	100.704838	Majlis Perbandaran Manjung
31	T031	29	4.337468	100.704899	Majlis Perbandaran Manjung
32	T032	30	4.337722	100.704949	Majlis Perbandaran Manjung

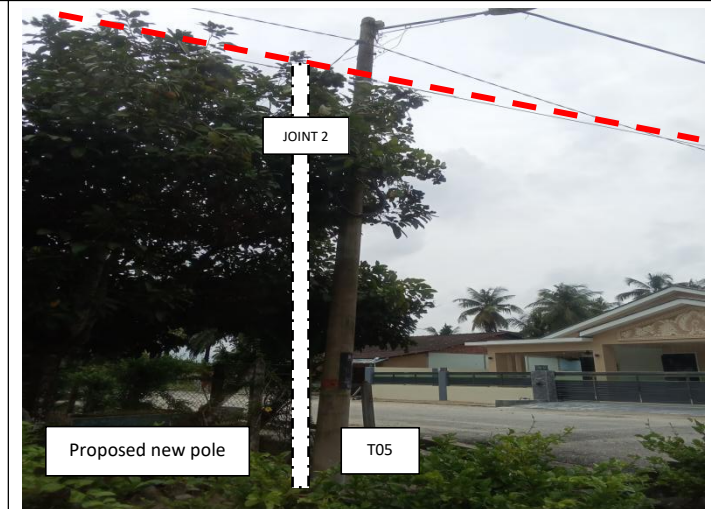
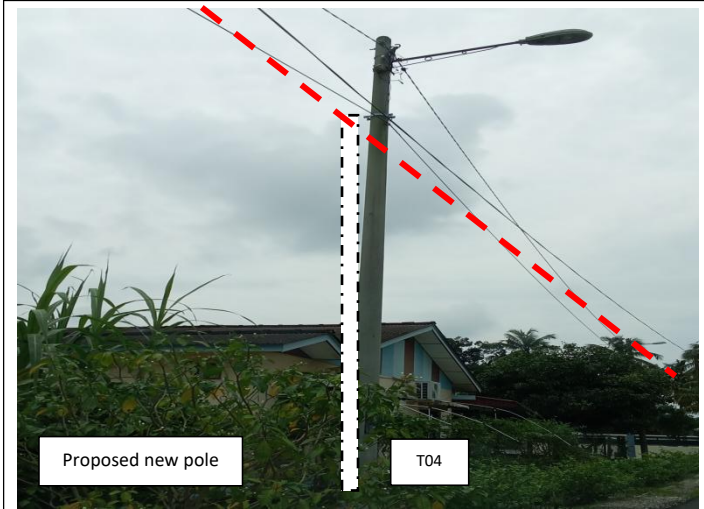
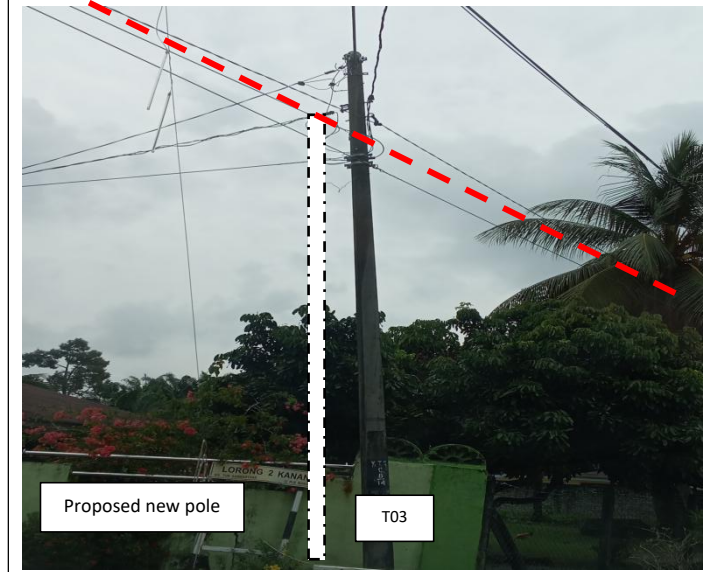
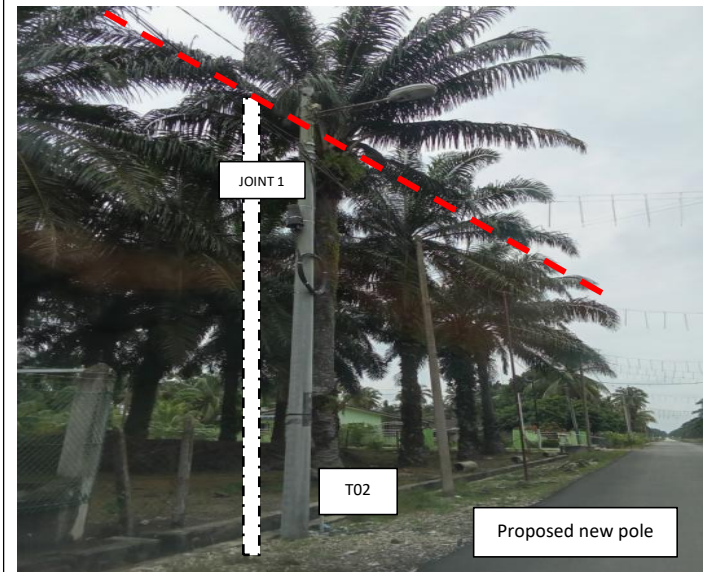
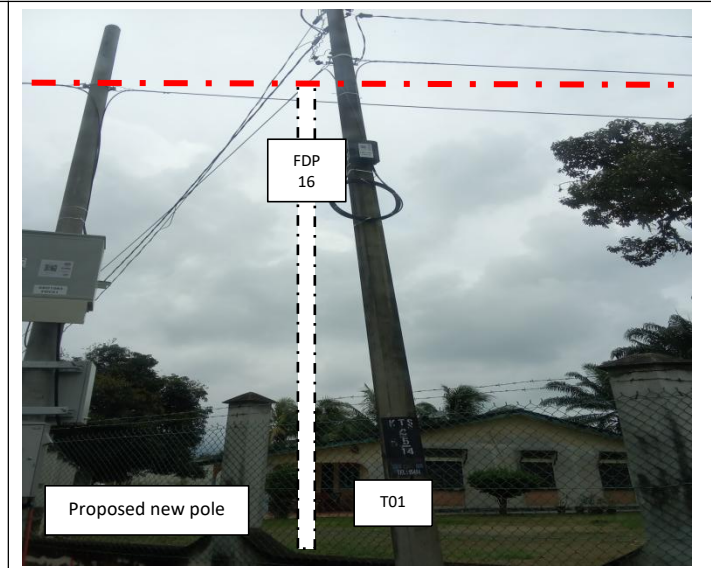
**Proposed New Pole Coordinate**

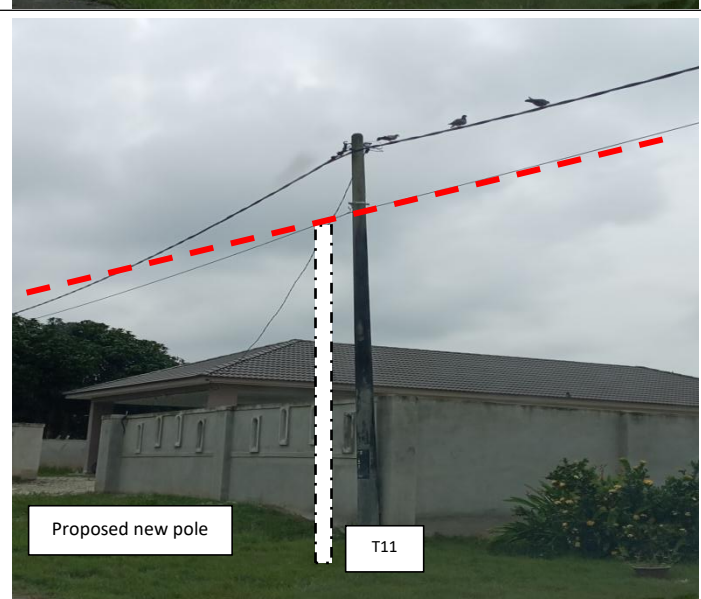
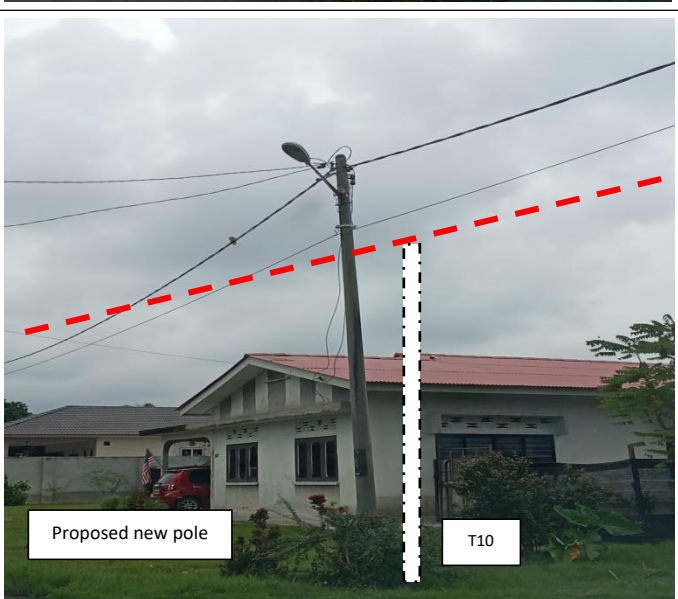
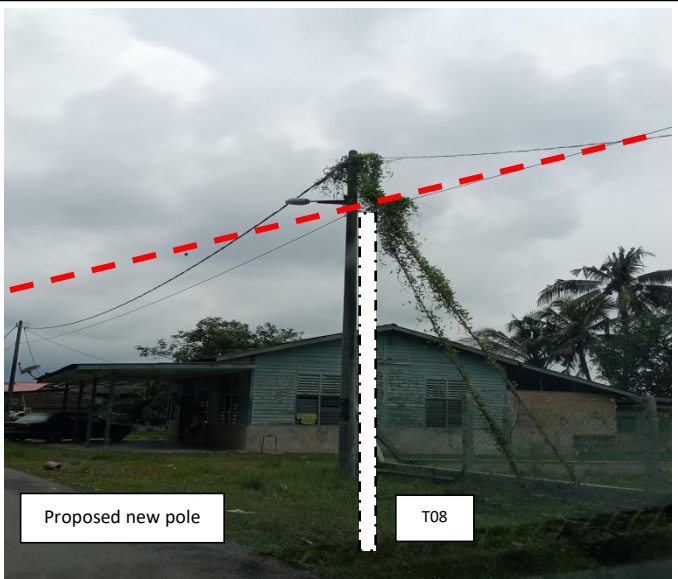
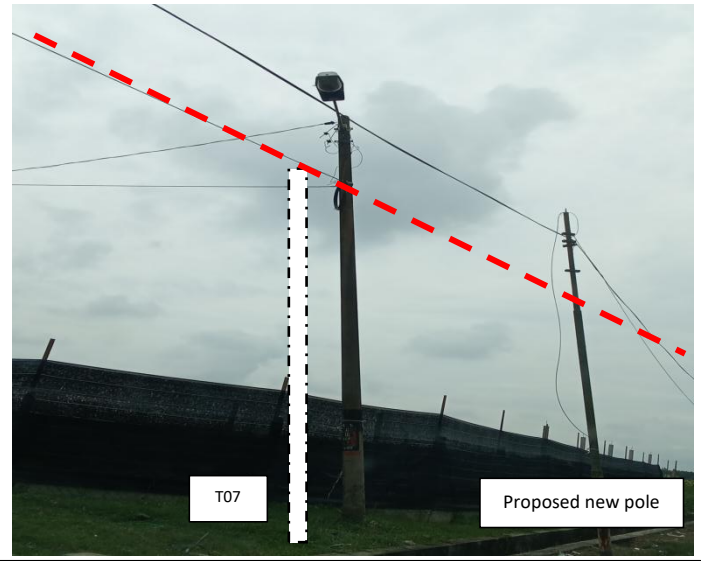
No.	Pole Number	Distance (m)	Latitude	Longitude	Local Authority
33	T033	36	4.337975	100.705011	Majlis Perbandaran Manjung
34	T034	30	4.338283	100.705085	Majlis Perbandaran Manjung
35	T035 (FDP 6)	24	4.338542	100.705140	Majlis Perbandaran Manjung
36	T036	42	4.338744	100.705191	Majlis Perbandaran Manjung
37	T037	32	4.339112	100.705268	Majlis Perbandaran Manjung
38	T038	27	4.339372	100.705344	Majlis Perbandaran Manjung
39	T039	37	4.339593	100.705414	Majlis Perbandaran Manjung
40	T040	27	4.339901	100.705471	Majlis Perbandaran Manjung
41	T041	37	4.340125	100.705516	Majlis Perbandaran Manjung
42	T042	24	4.340454	100.705592	Majlis Perbandaran Manjung
43	T043	18	4.340656	100.705633	Majlis Perbandaran Manjung
44	T044	27	4.340818	100.705657	Majlis Perbandaran Manjung
45	T045	33	4.341042	100.705715	Majlis Perbandaran Manjung
46	T046	29	4.341336	100.705776	Majlis Perbandaran Manjung
47	T047	32	4.341589	100.705825	Majlis Perbandaran Manjung
48	T048	26	4.341860	100.705898	Majlis Perbandaran Manjung
49	T049	35	4.342080	100.705964	Majlis Perbandaran Manjung
50	T050	32	4.342383	100.706042	Majlis Perbandaran Manjung
51	T051	36	4.342655	100.706124	Majlis Perbandaran Manjung
52	T052	36	4.342973	100.706171	Majlis Perbandaran Manjung
53	T053	32	4.337620	100.704350	Majlis Perbandaran Manjung
54	T054	31	4.337895	100.704413	Majlis Perbandaran Manjung
55	T055	28	4.338164	100.704481	Majlis Perbandaran Manjung
56	T056 (FDP 9)	32	4.338406	100.704518	Majlis Perbandaran Manjung
57	T057	31	4.338686	100.704599	Majlis Perbandaran Manjung
58	T058	36	4.338949	100.704652	Majlis Perbandaran Manjung
59	T059	28	4.339251	100.704737	Majlis Perbandaran Manjung
60	T060	32	4.339495	100.704792	Majlis Perbandaran Manjung
61	T061 (FDP 8)	27	4.339756	100.704855	Majlis Perbandaran Manjung
62	T062	38	4.339991	100.704893	Majlis Perbandaran Manjung
63	T063	31	4.340329	100.704951	Majlis Perbandaran Manjung
64	T064	28	4.340588	100.705023	Majlis Perbandaran Manjung
65	T065	38	4.340822	100.705081	Majlis Perbandaran Manjung
66	T066	26	4.341157	100.705125	Majlis Perbandaran Manjung
67	T067 (JOINT 3)	33	4.341377	100.705179	Majlis Perbandaran Manjung
68	T068	37	4.341668	100.705251	Majlis Perbandaran Manjung
69	T069	33	4.341992	100.705326	Majlis Perbandaran Manjung
70	T070	35	4.342275	100.705402	Majlis Perbandaran Manjung
71	T071	26	4.342580	100.705460	Majlis Perbandaran Manjung
72	T072	32	4.342802	100.705527	Majlis Perbandaran Manjung
73	T073	34	4.343076	100.705582	Majlis Perbandaran Manjung
74	T074 (FDP 7)	20	4.343347	100.705666	Majlis Perbandaran Manjung
75	T075	30	4.337831	100.703697	Majlis Perbandaran Manjung
76	T076	30	4.338084	100.703769	Majlis Perbandaran Manjung
77	T077	29	4.338338	100.703826	Majlis Perbandaran Manjung

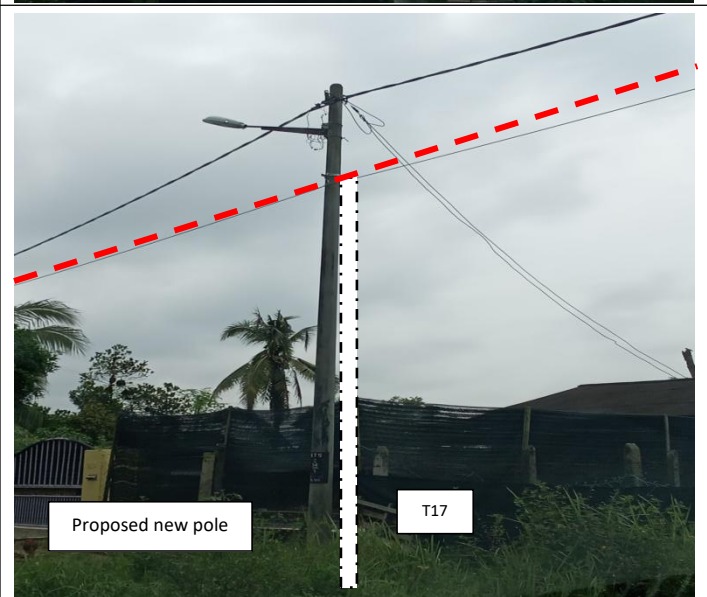
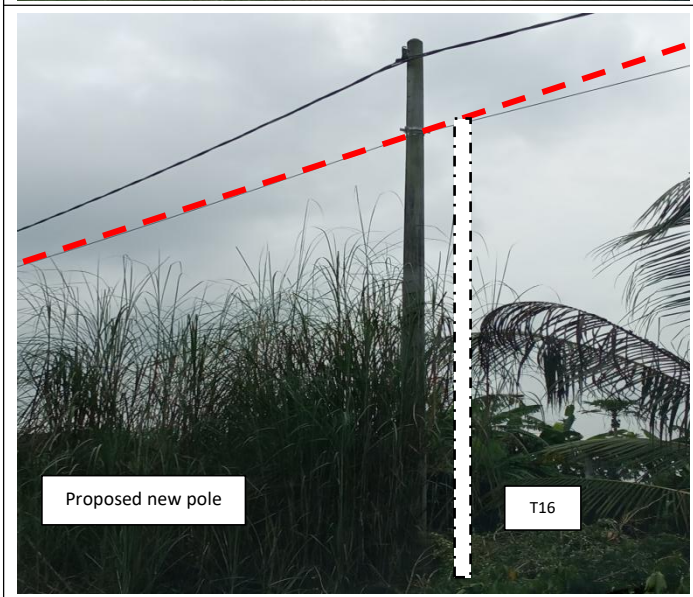
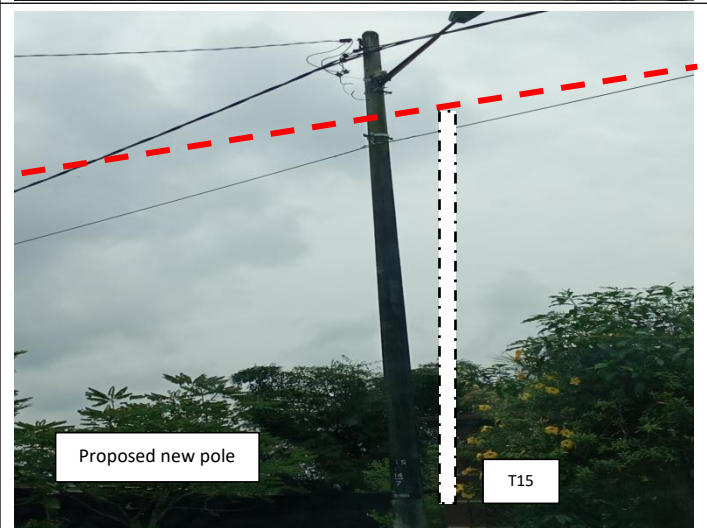
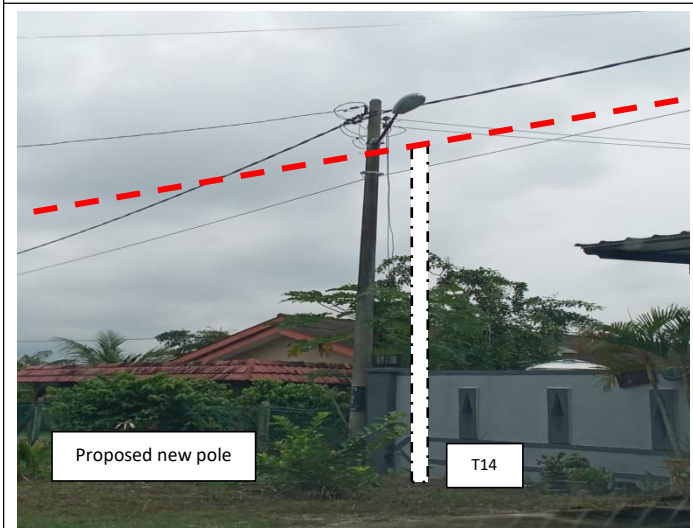
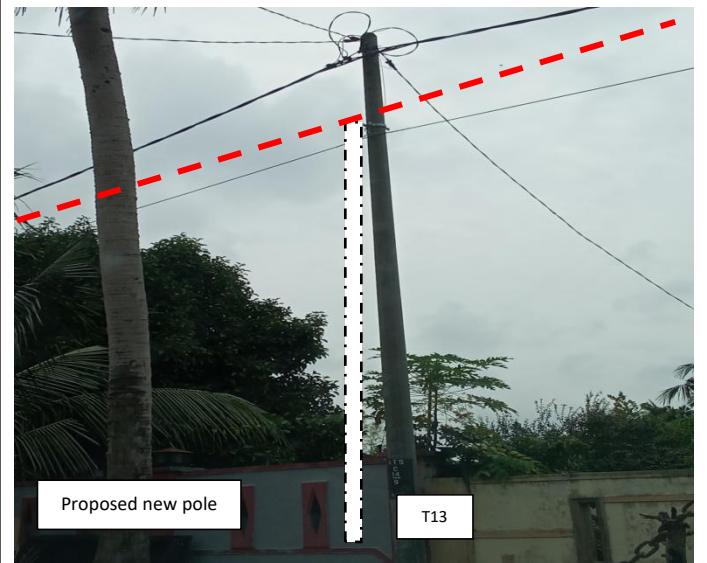
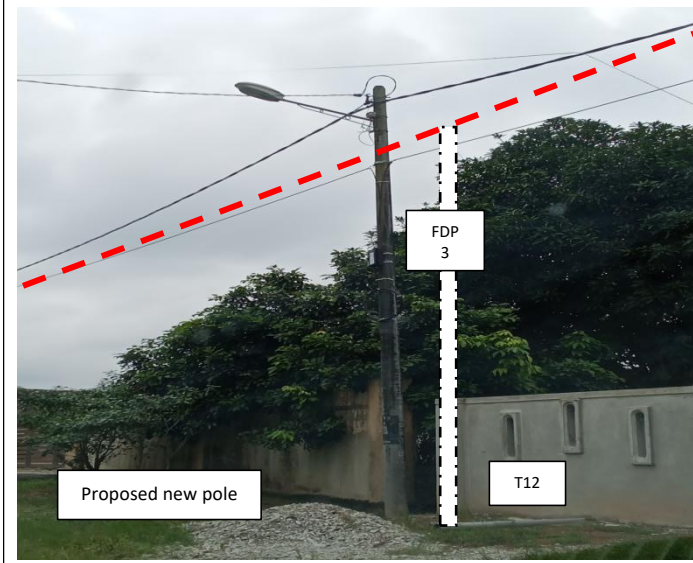
**Proposed New Pole Coordinate**

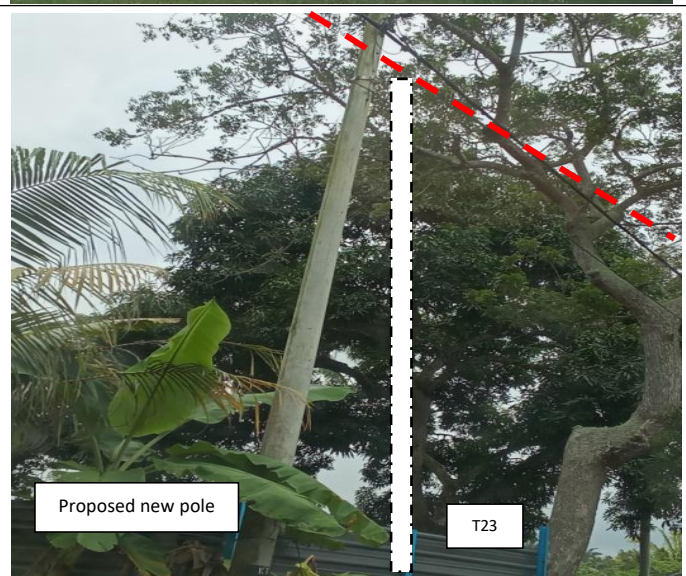
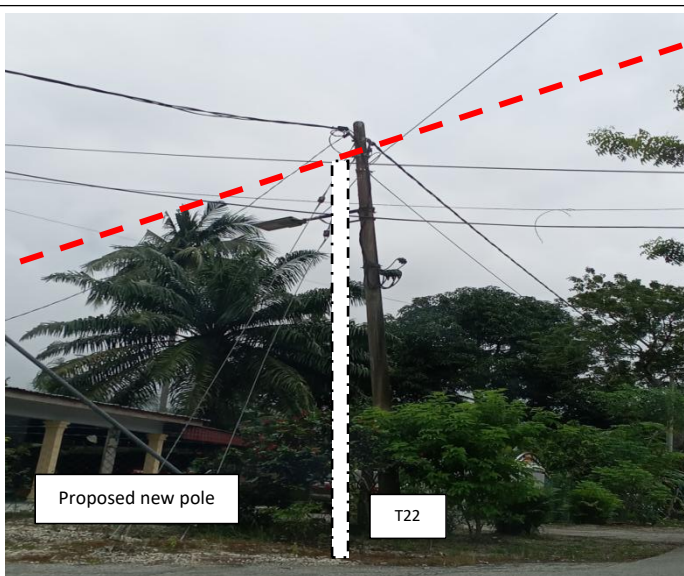
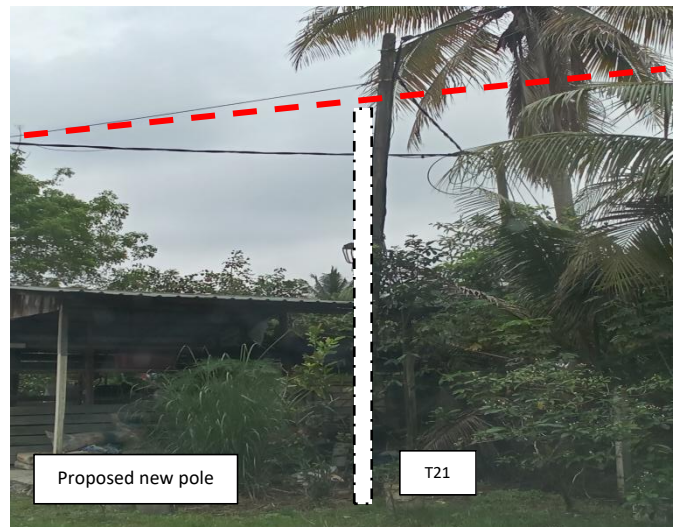
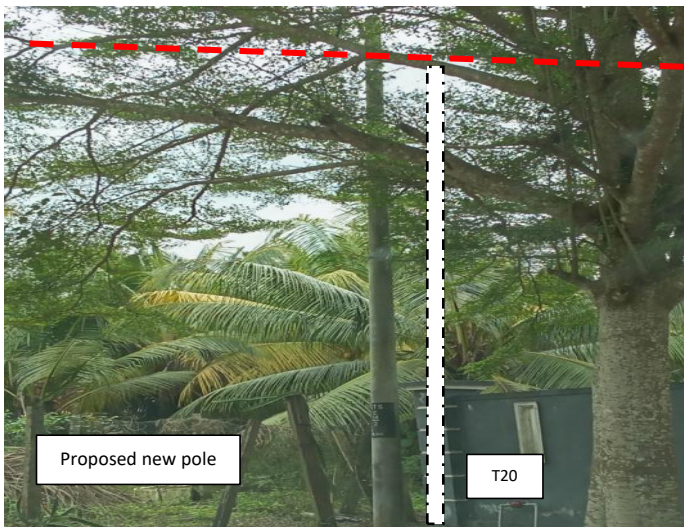
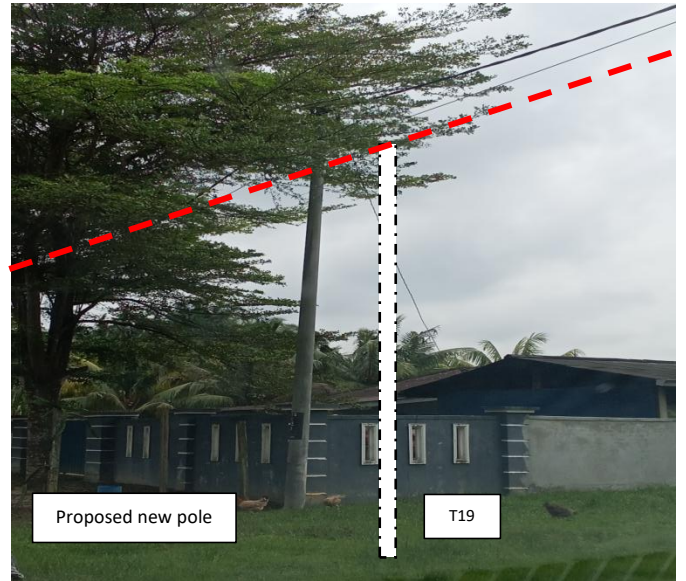
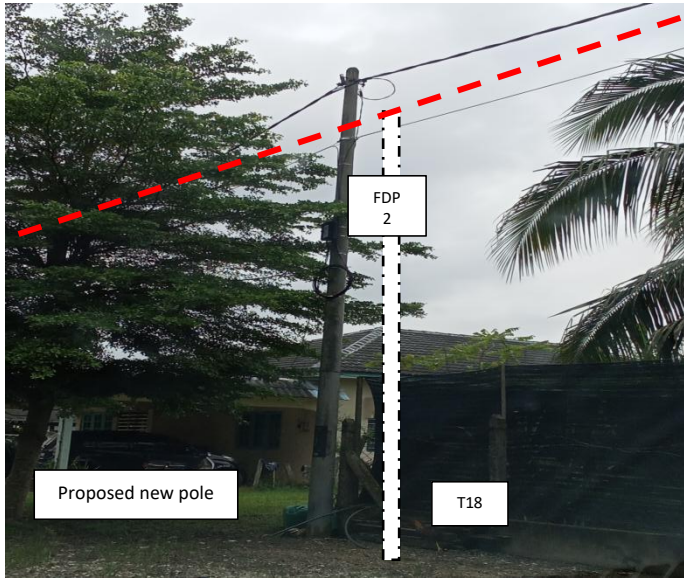
No.	Pole Number	Distance (m)	Latitude	Longitude	Local Authority
78	T078	29	4.338582	100.703890	Majlis Perbandaran Manjung
79	T079 (FDP 15)	36	4.338825	100.703962	Majlis Perbandaran Manjung
80	T080	28	4.339141	100.704010	Majlis Perbandaran Manjung
81	T081	31	4.339377	100.704057	Majlis Perbandaran Manjung
82	T082	38	4.339643	100.704134	Majlis Perbandaran Manjung
83	T083	30	4.339971	100.704189	Majlis Perbandaran Manjung
84	T084	24	4.340227	100.704252	Majlis Perbandaran Manjung
85	T085	37	4.340440	100.704289	Majlis Perbandaran Manjung
86	T086 (FDP 14)	29	4.340760	100.704380	Majlis Perbandaran Manjung
87	T087	16	4.340984	100.704474	Majlis Perbandaran Manjung
88	T088	27	4.341042	100.704345	Majlis Perbandaran Manjung
89	T089	45	4.341099	100.704111	Majlis Perbandaran Manjung
90	T090	19	4.341116	100.703712	Majlis Perbandaran Manjung
91	T091	24	4.340949	100.703659	Majlis Perbandaran Manjung
92	T092	33	4.340727	100.703642	Majlis Perbandaran Manjung
93	T093	38	4.340441	100.703575	Majlis Perbandaran Manjung
94	T094	50	4.340105	100.703496	Majlis Perbandaran Manjung
95	T095	27	4.339673	100.703384	Majlis Perbandaran Manjung
96	T096 (FDP 13)	27	4.339443	100.703343	Majlis Perbandaran Manjung
97	T097	48	4.341695	100.705020	Majlis Perbandaran Manjung
97	T098	13	4.341799	100.704595	Majlis Perbandaran Manjung
99	T099	28	4.341910	100.704617	Majlis Perbandaran Manjung
100	T100	29	4.342160	100.704669	Majlis Perbandaran Manjung
101	T101	29	4.342408	100.704747	Majlis Perbandaran Manjung
102	T102	30	4.342671	100.704783	Majlis Perbandaran Manjung
103	T103 (FDP 11)	37	4.342958	100.704871	Majlis Perbandaran Manjung
104	T104	28	4.343282	100.704918	Majlis Perbandaran Manjung
105	T105	29	4.343513	100.705002	Majlis Perbandaran Manjung
106	T106	27	4.343771	100.705055	Majlis Perbandaran Manjung
107	T107 (FDP 10)	27	4.343990	100.705139	Majlis Perbandaran Manjung
108	T108	23	4.341877	100.704362	Majlis Perbandaran Manjung
109	T109	27	4.341895	100.704150	Majlis Perbandaran Manjung
110	T110	23	4.341967	100.703921	Majlis Perbandaran Manjung
111	T111	36	4.342147	100.703971	Majlis Perbandaran Manjung
112	T112	32	4.342472	100.704036	Majlis Perbandaran Manjung
113	T113	31	4.342759	100.704094	Majlis Perbandaran Manjung
114	T114 (FDP 12)	32	4.343020	100.704188	Majlis Perbandaran Manjung
115	T115 (OLT&FDC)	5	4.337658	100.703670	Majlis Perbandaran Manjung

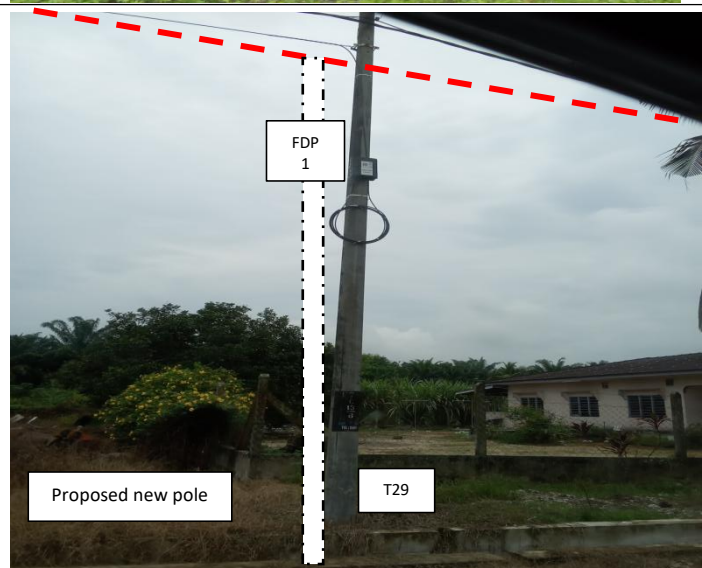
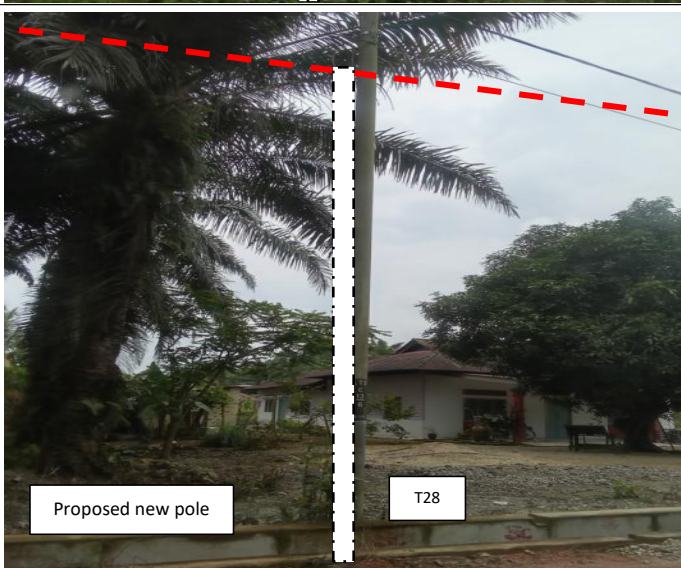
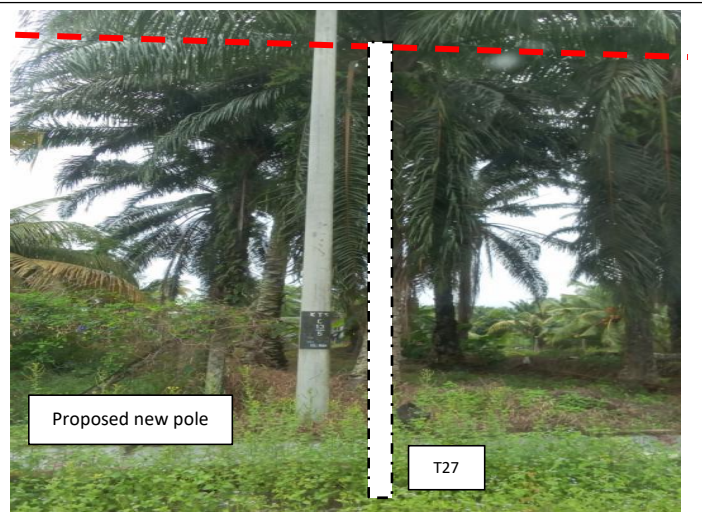
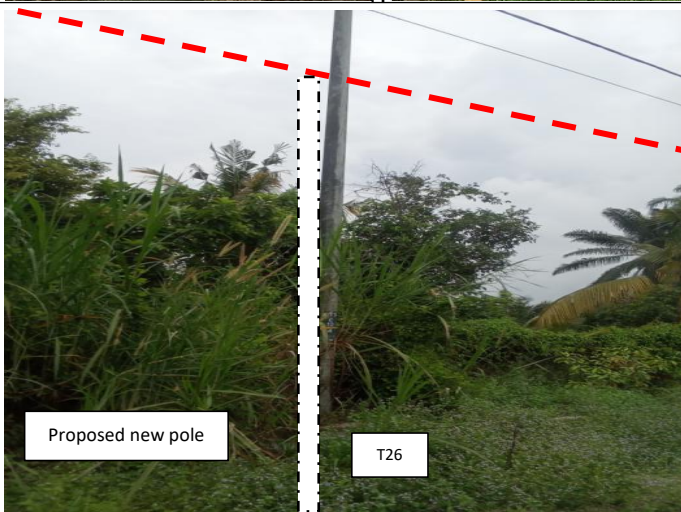
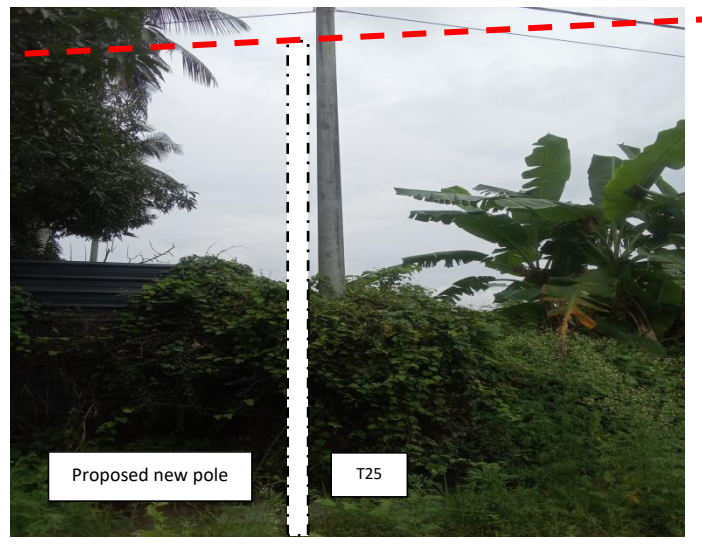
**6.0 SITE PHOTOS - PROPOSED NEW POLE**

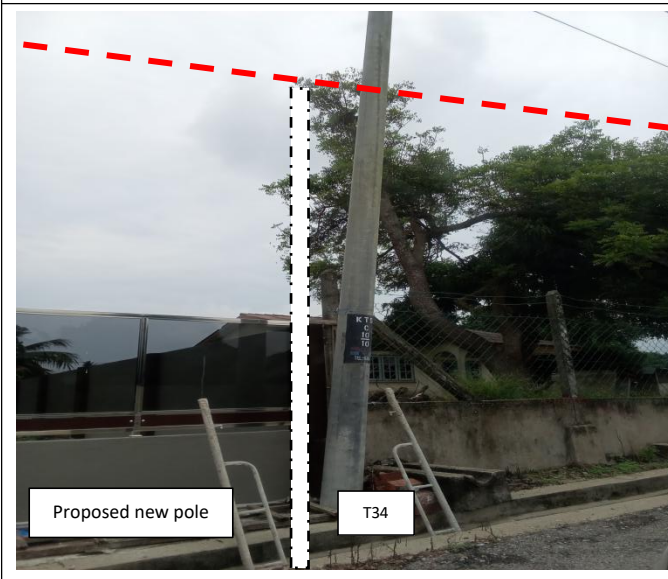
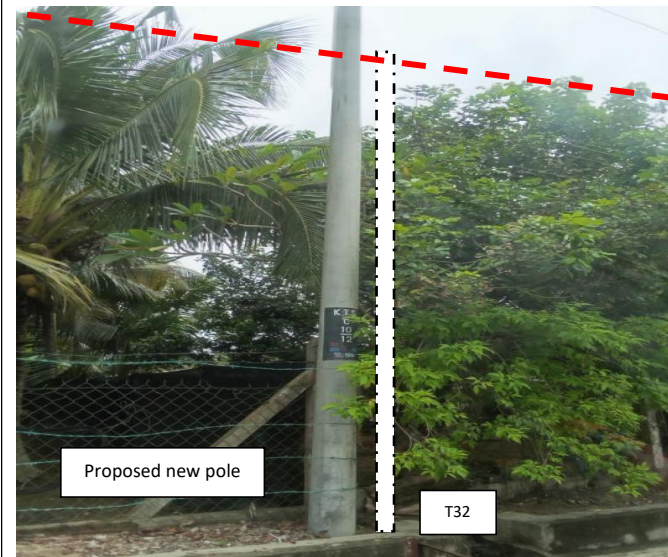
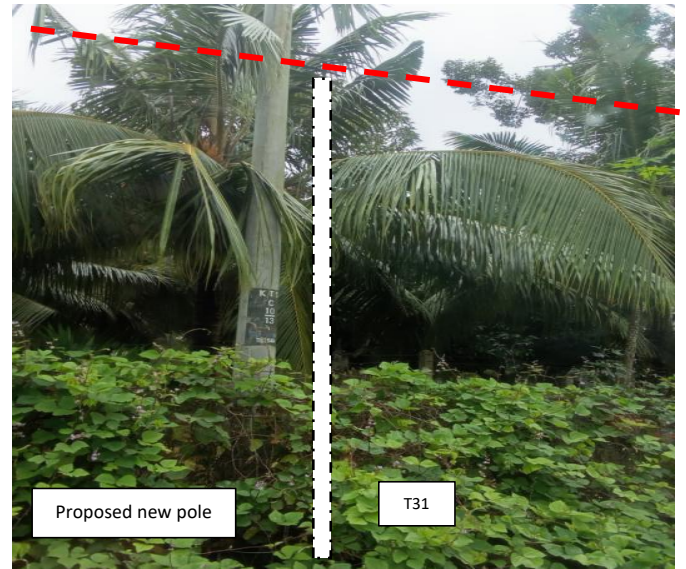
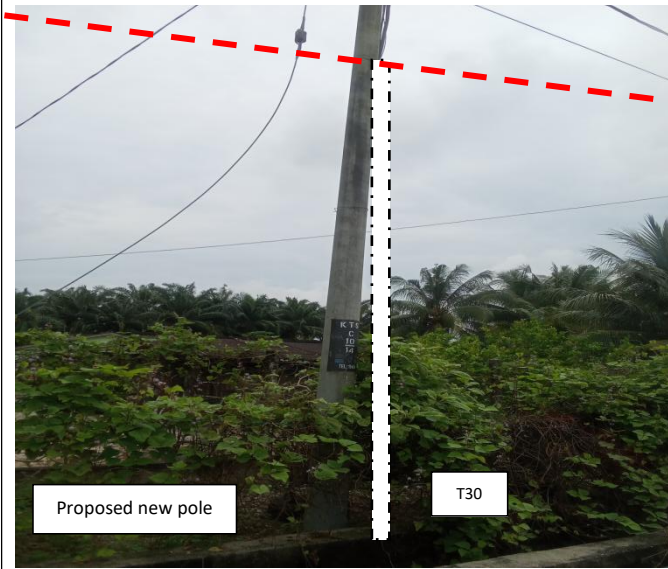


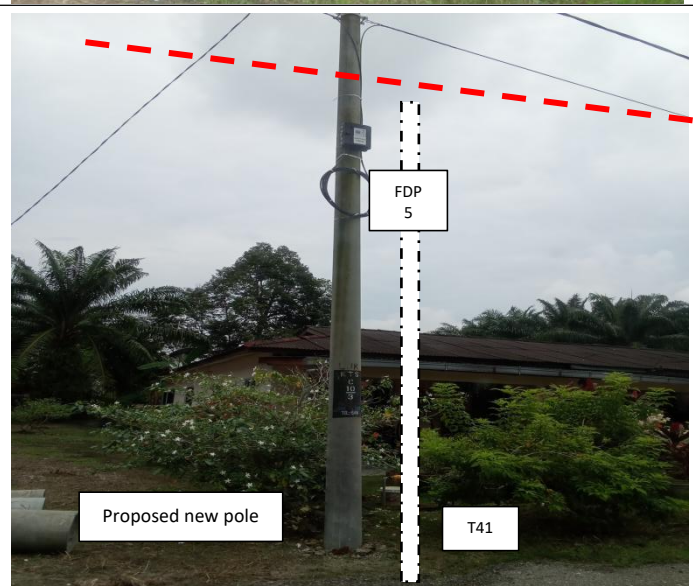
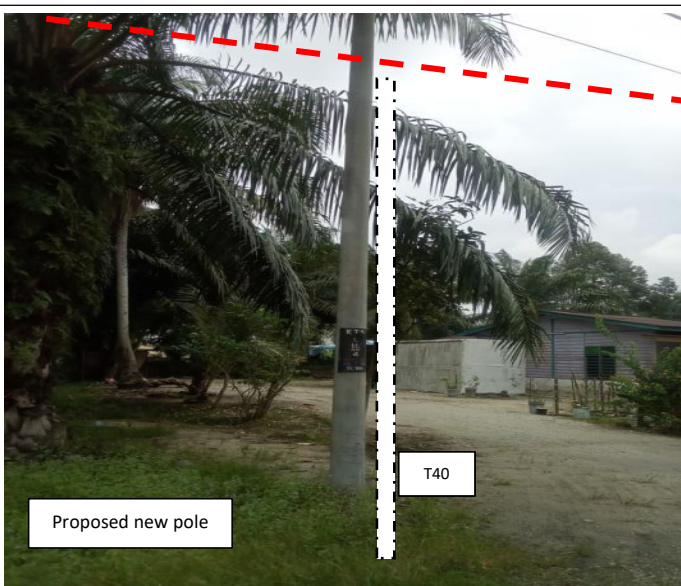
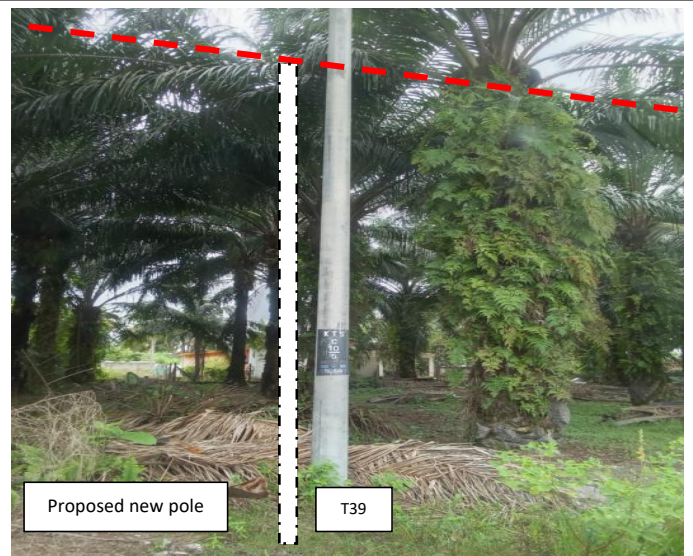
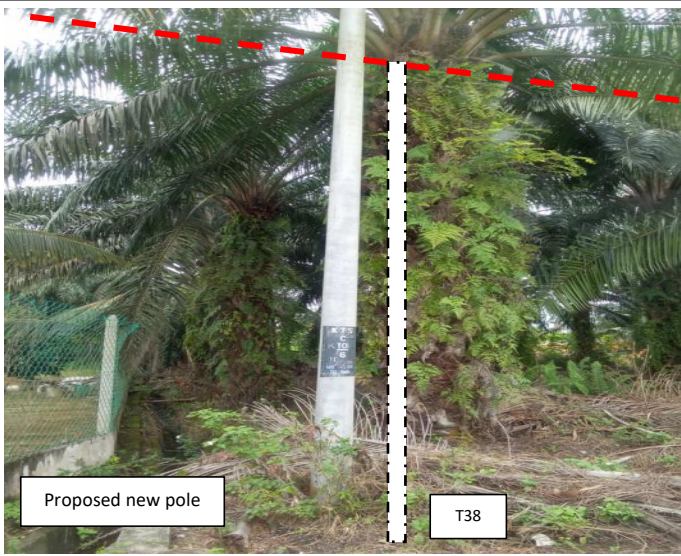
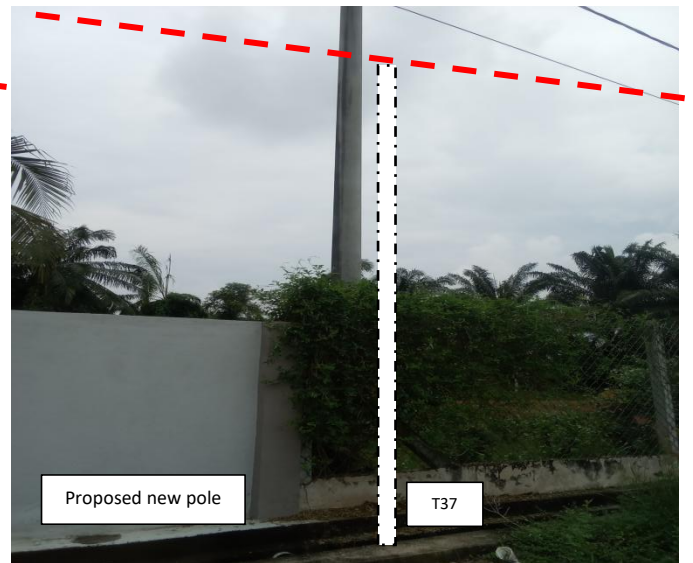
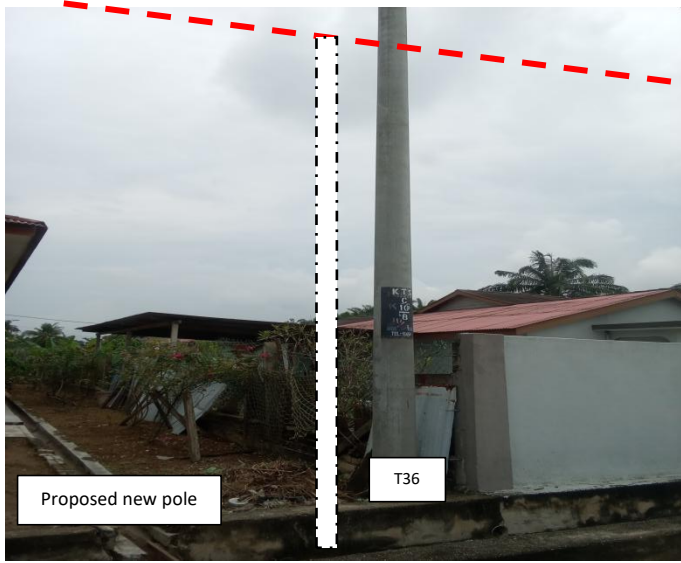


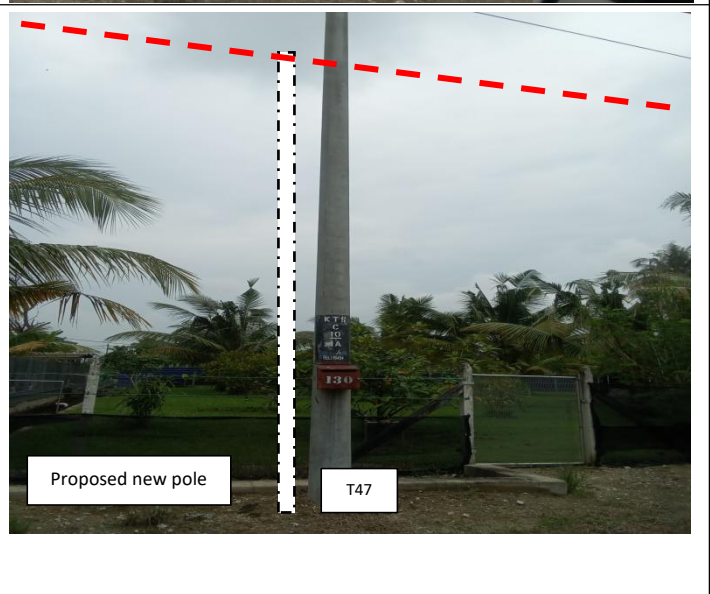
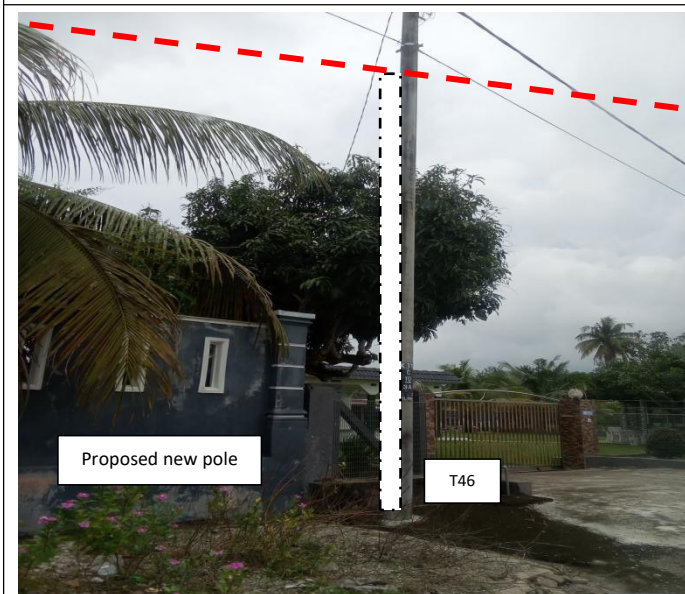
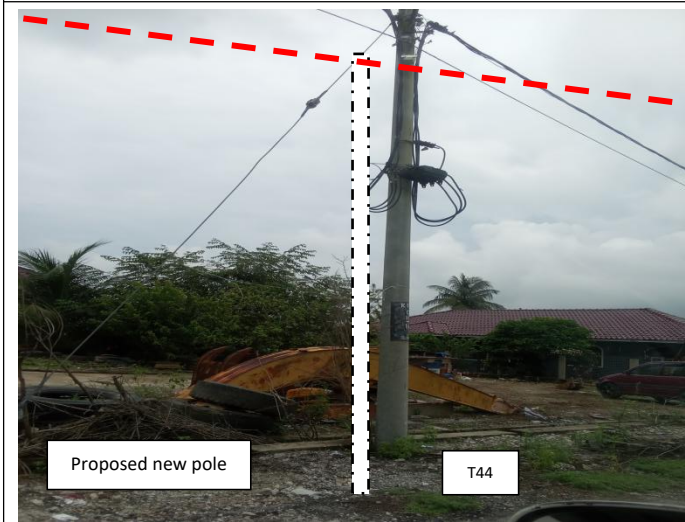
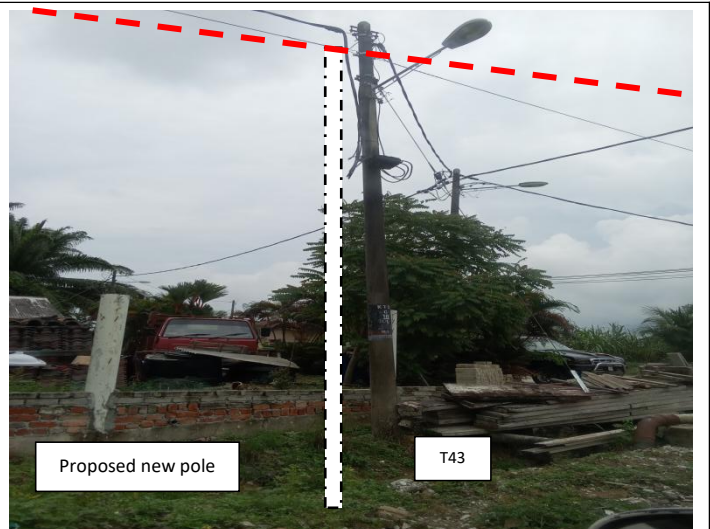
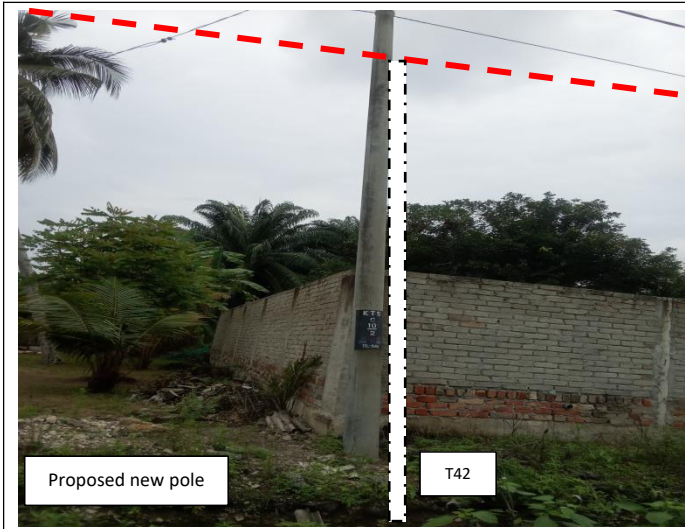


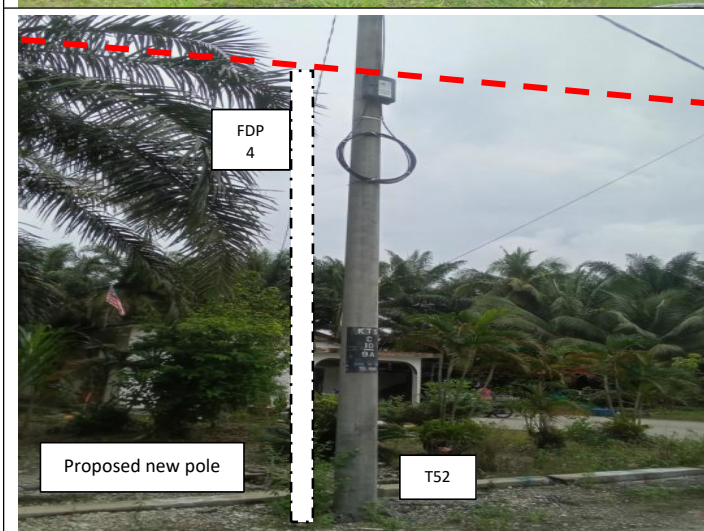
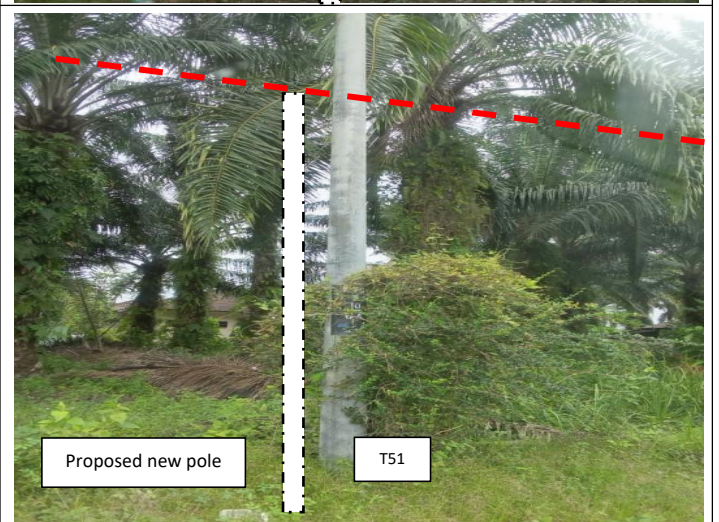
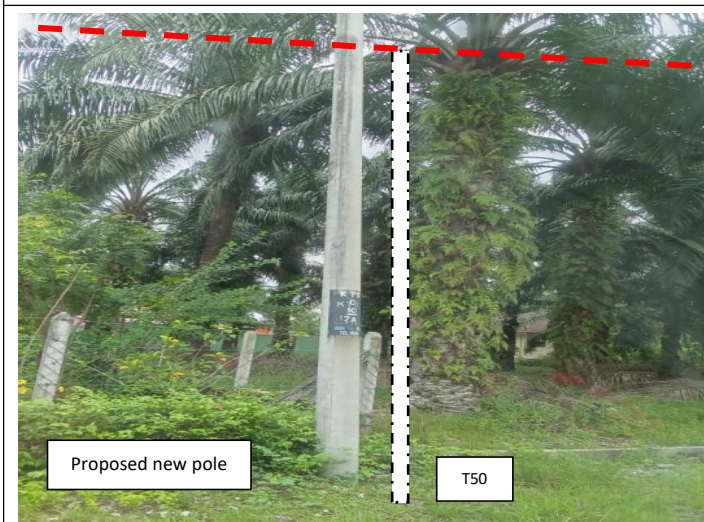
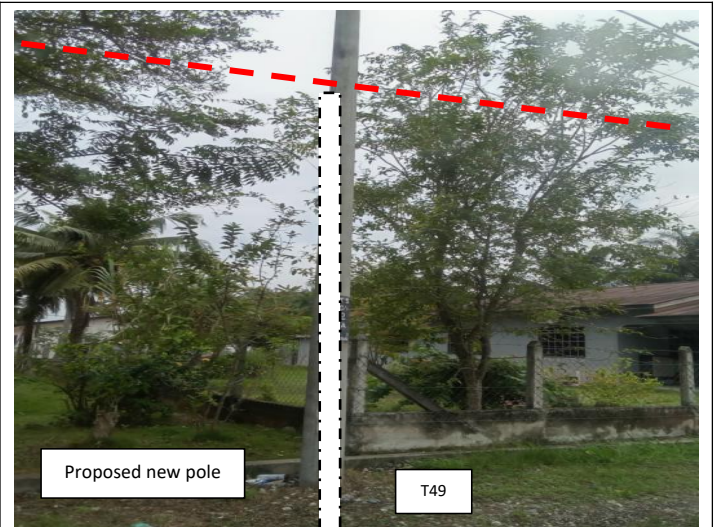
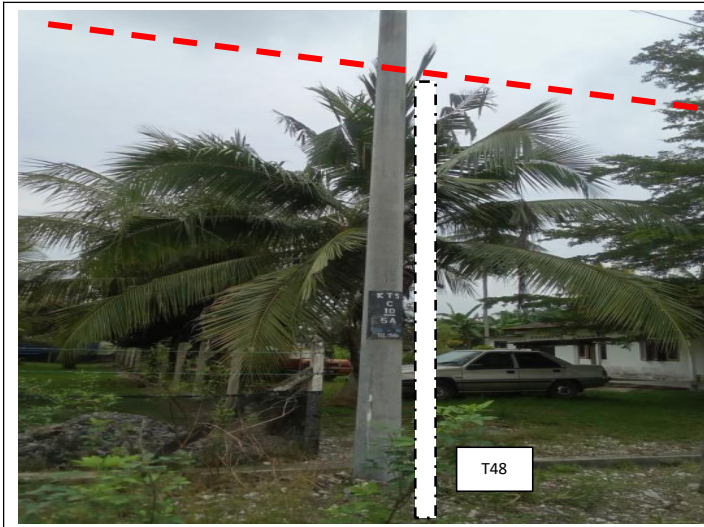


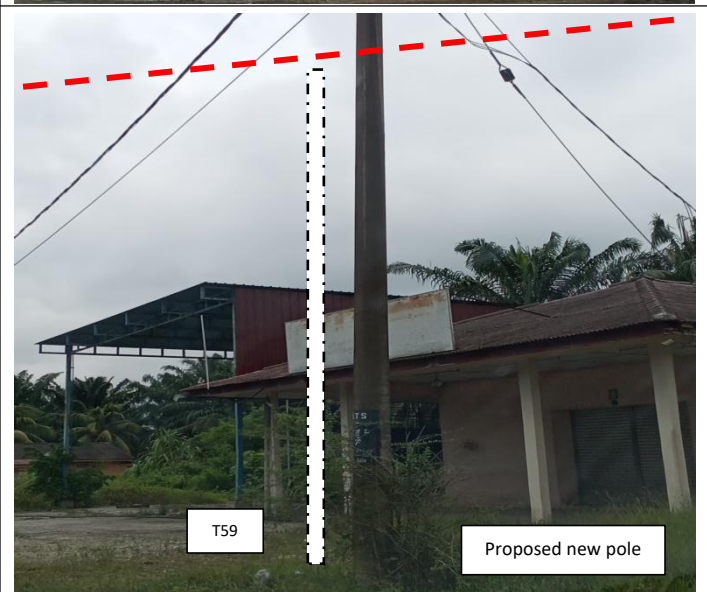
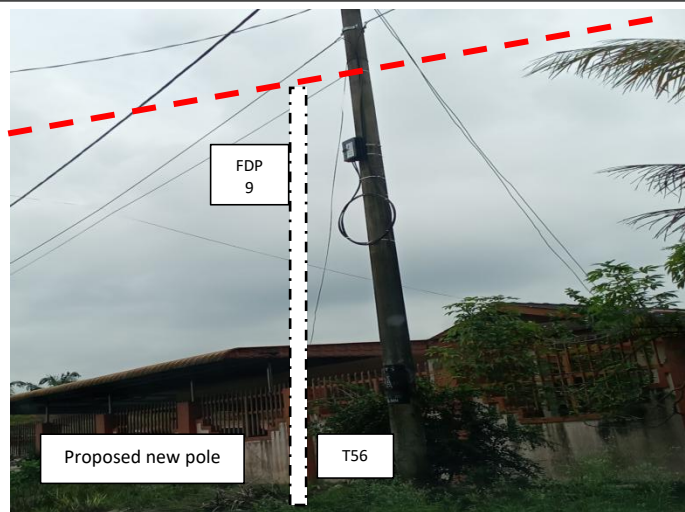


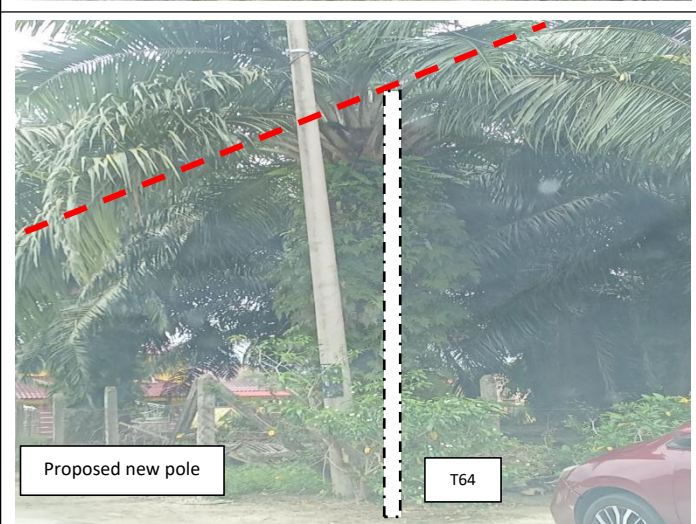
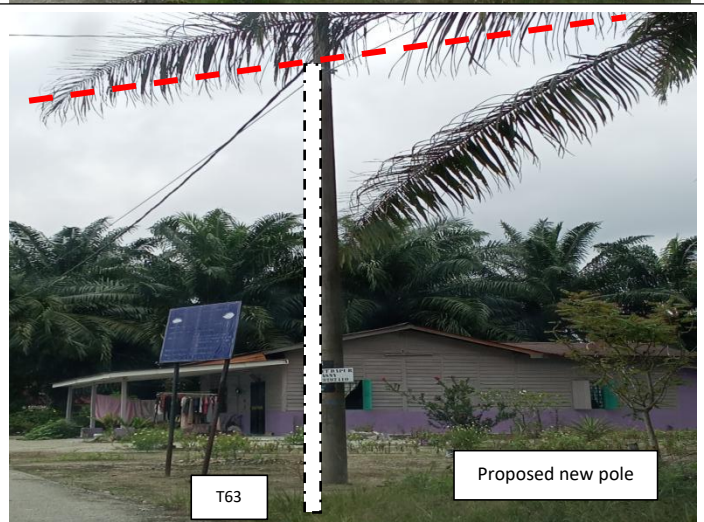
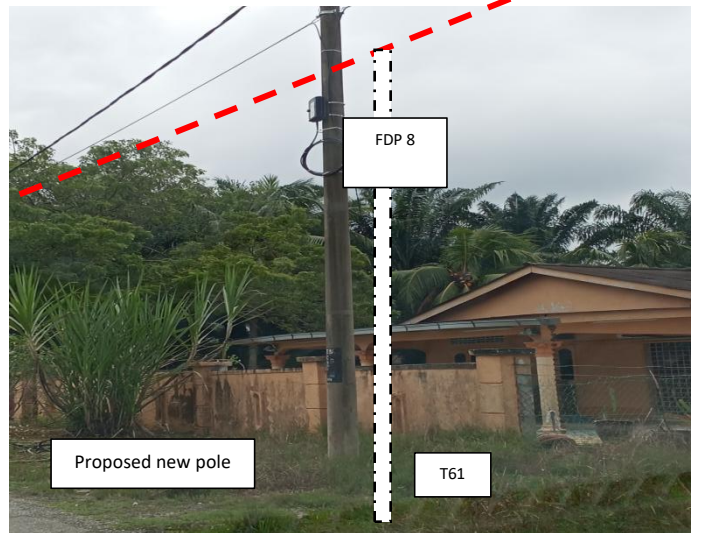
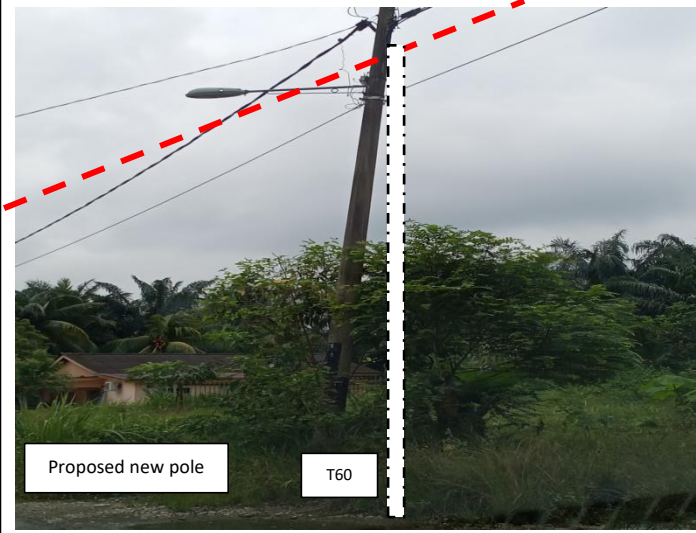


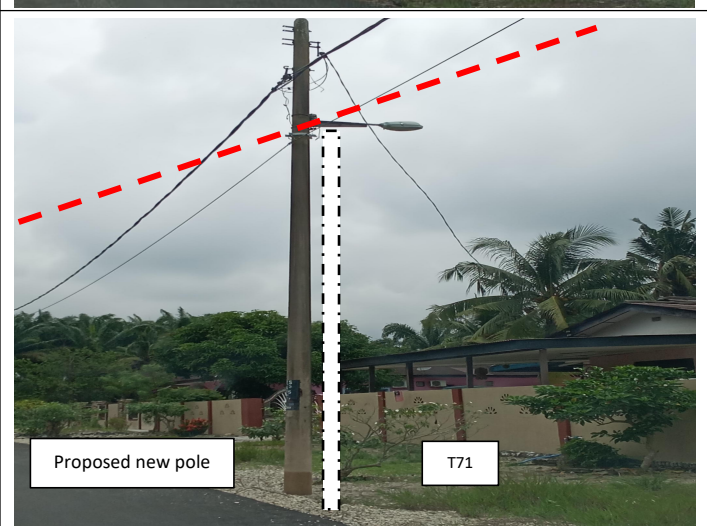
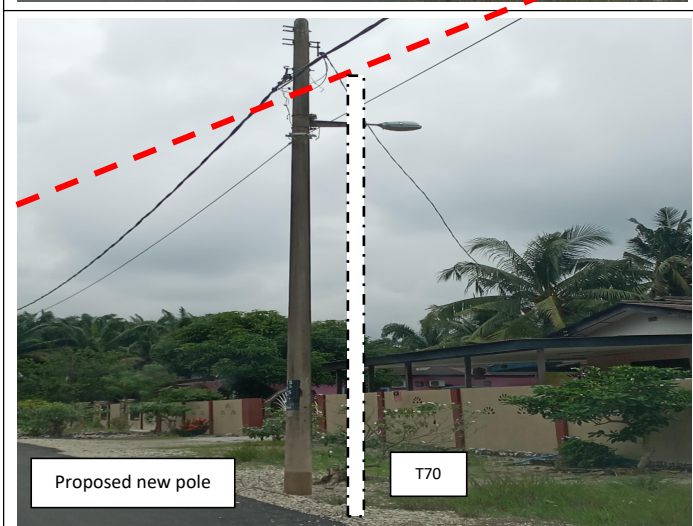
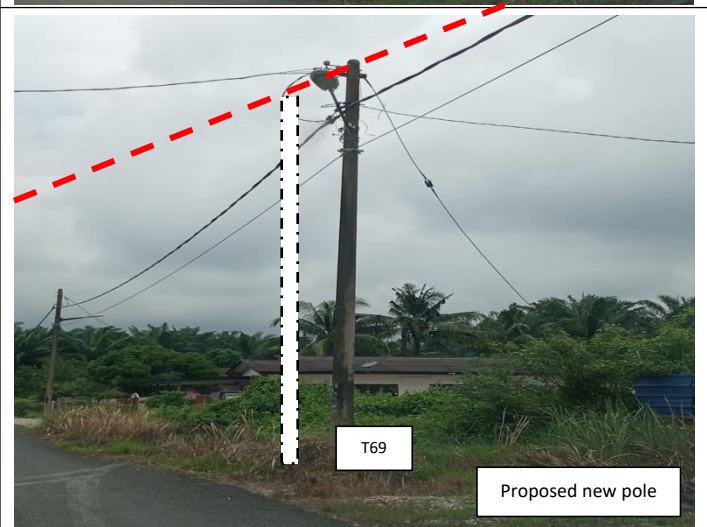
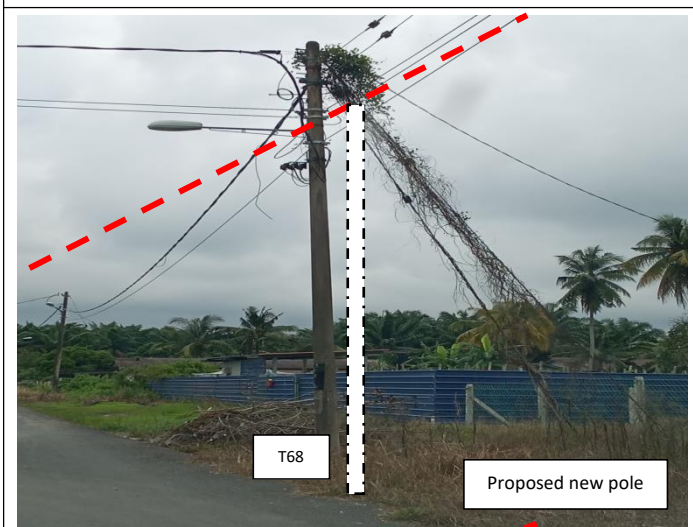
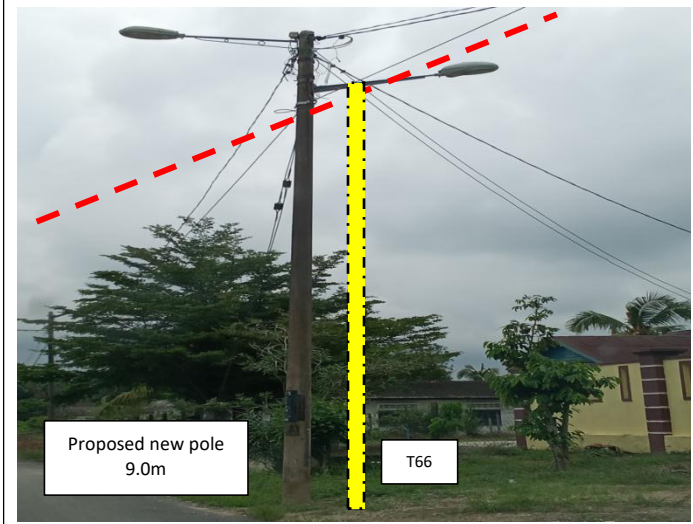


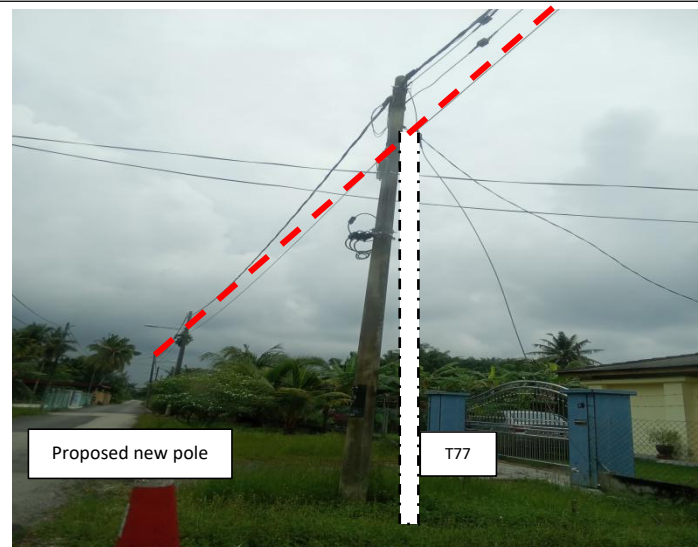
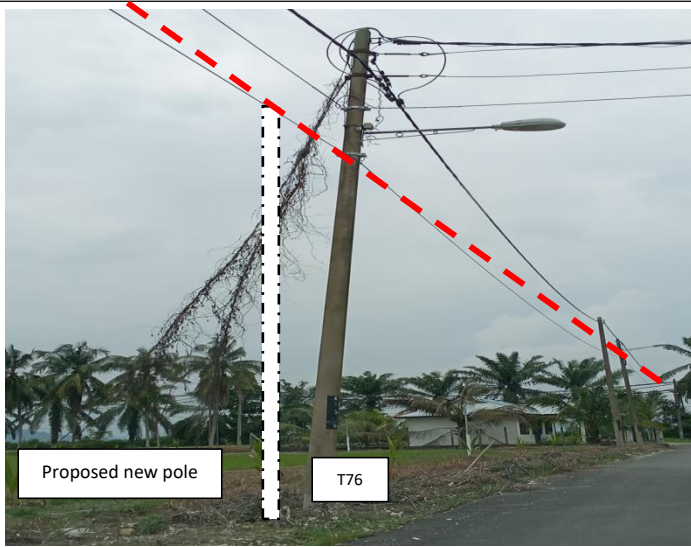
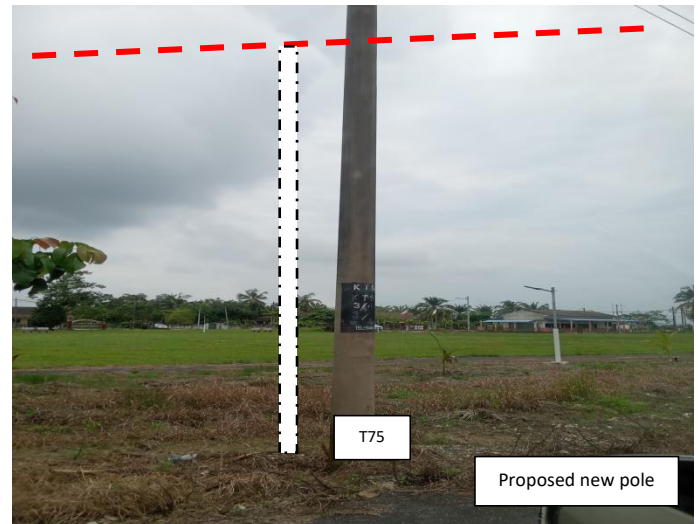
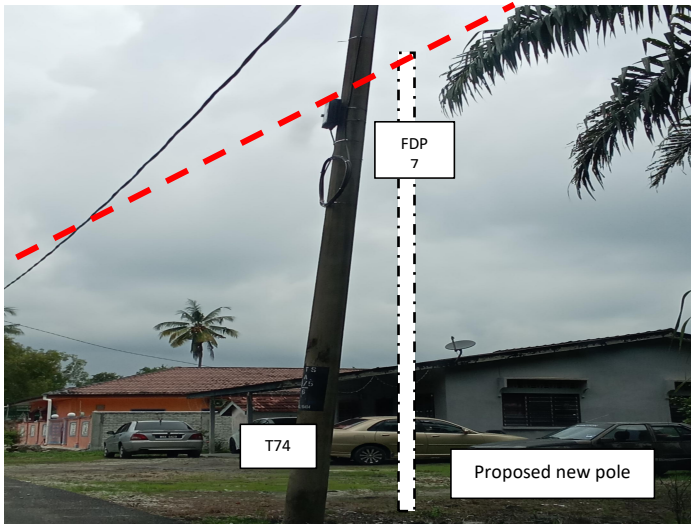
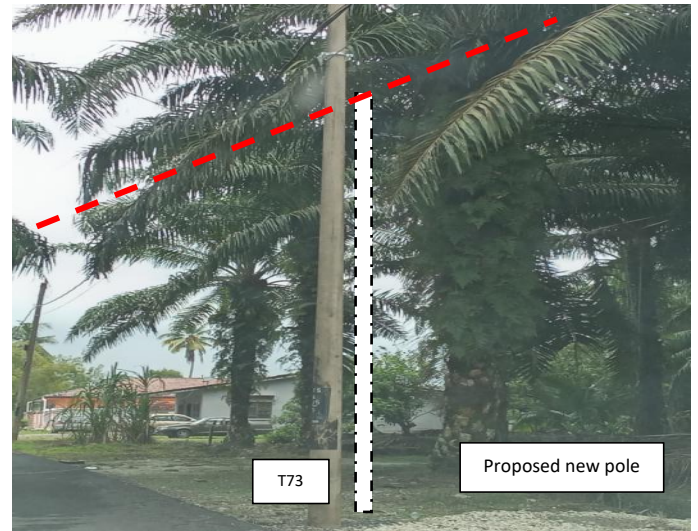
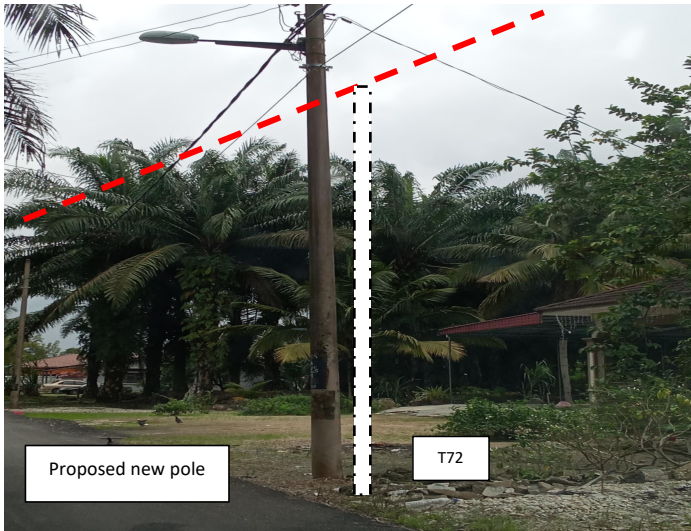


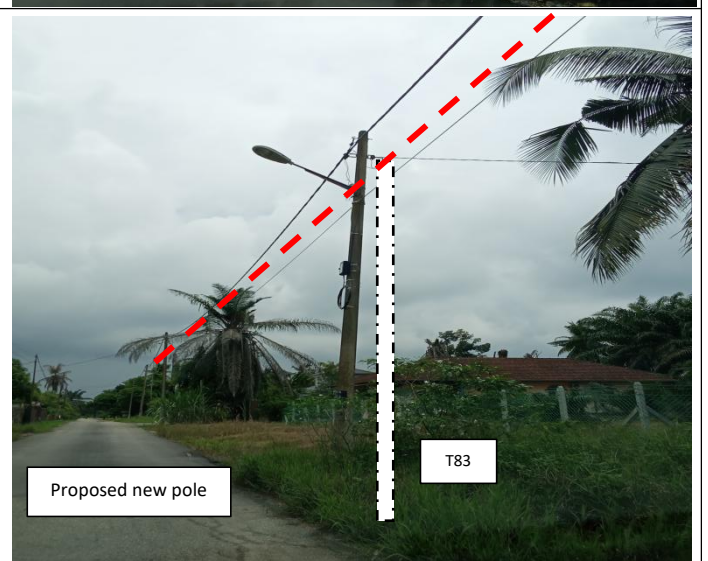
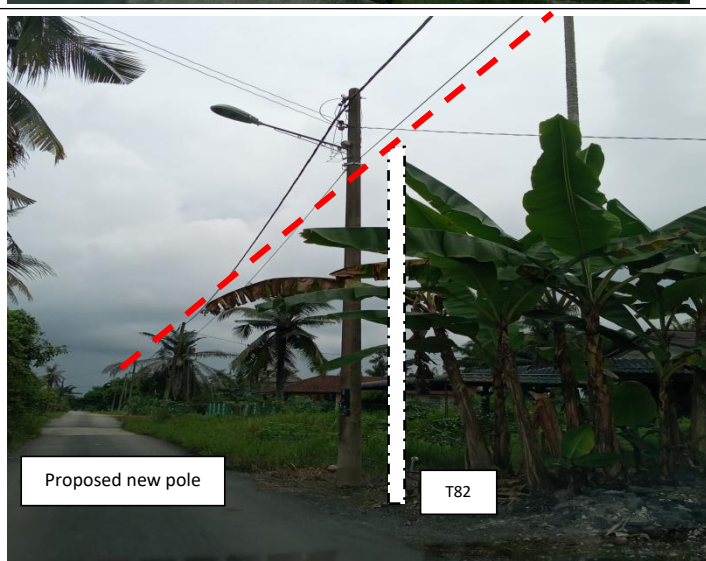
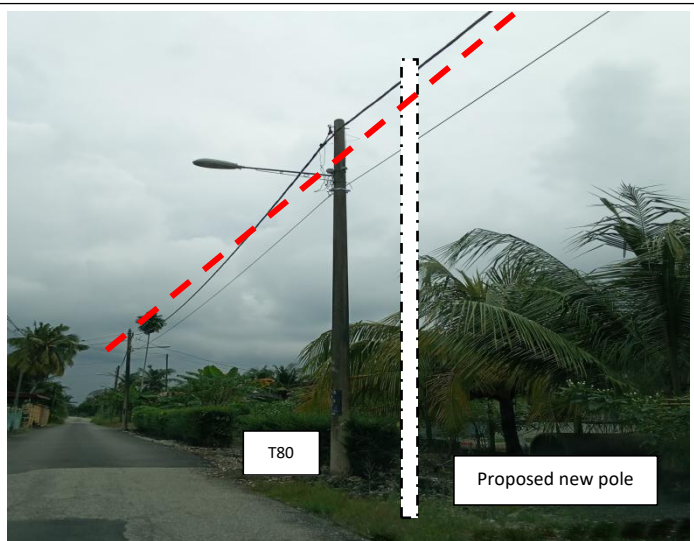
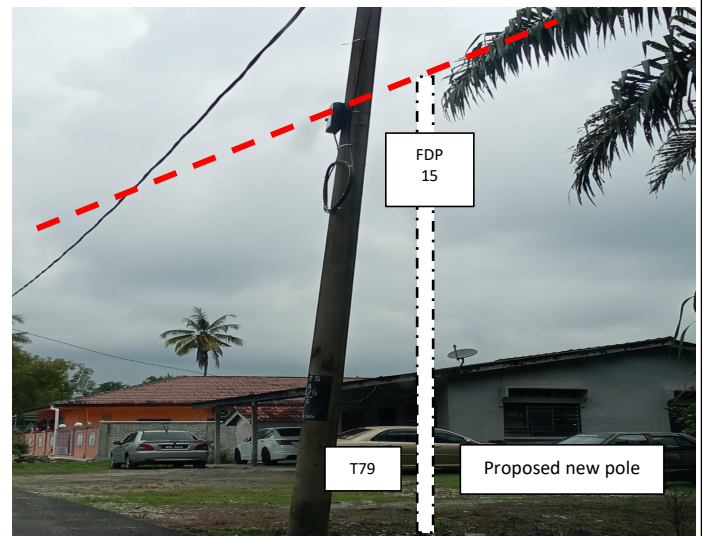
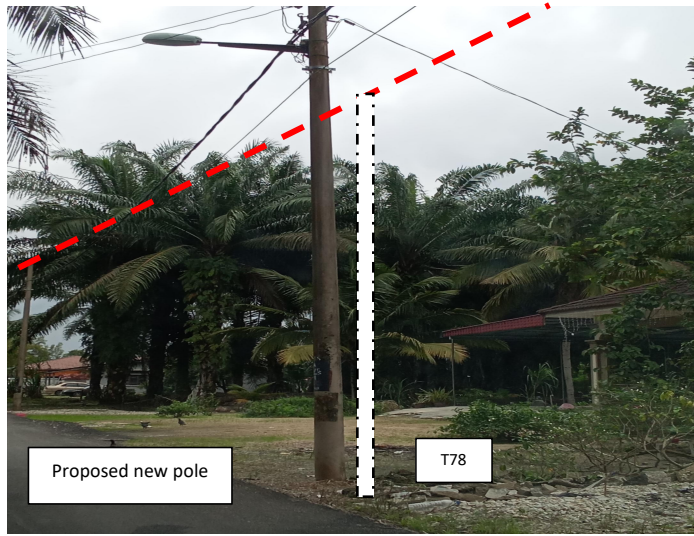


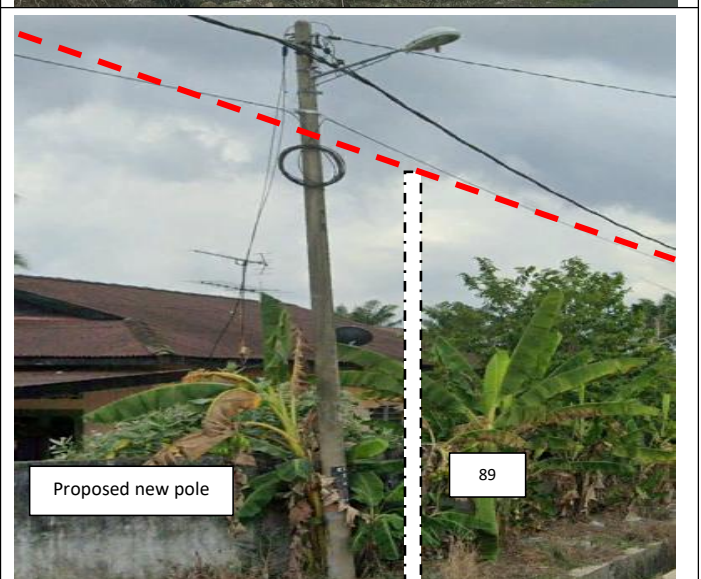
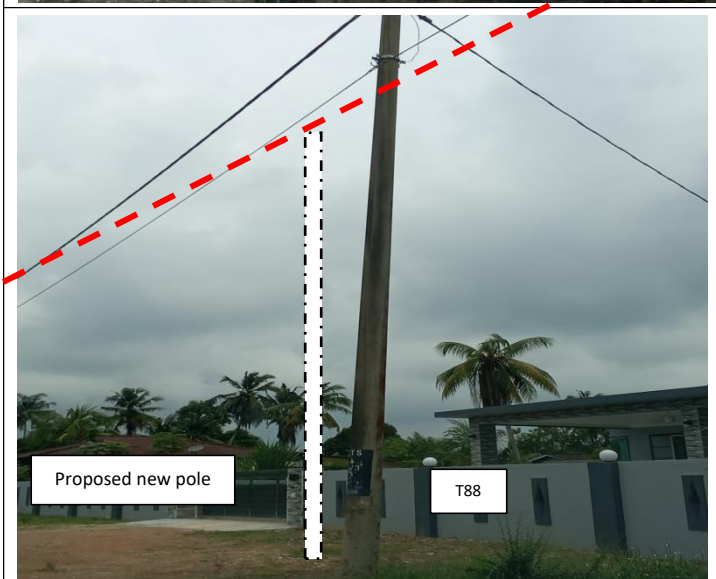
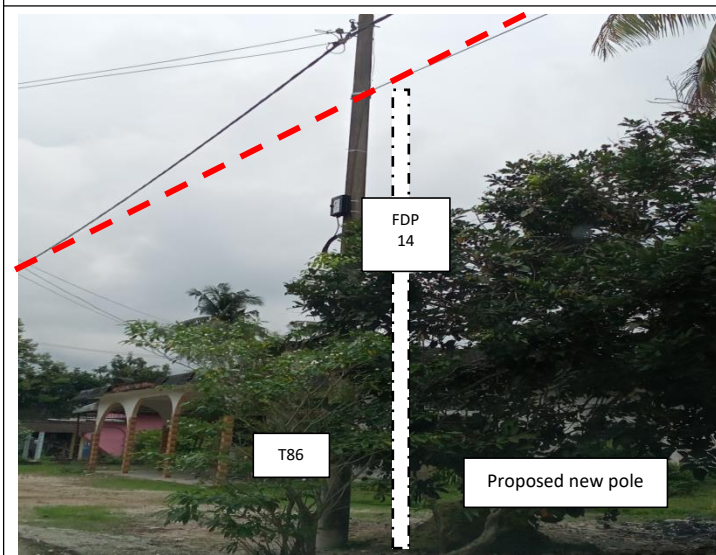
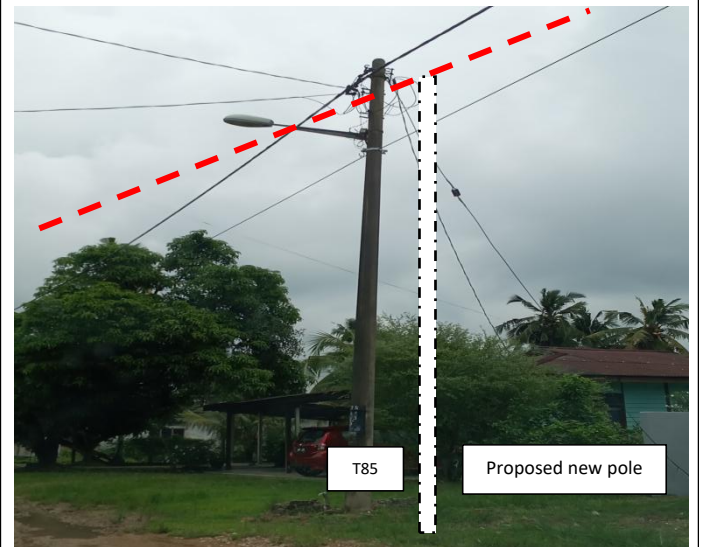
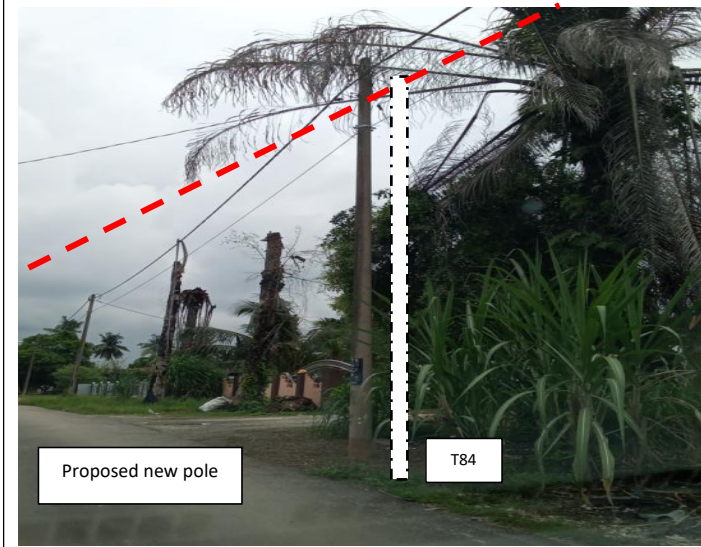


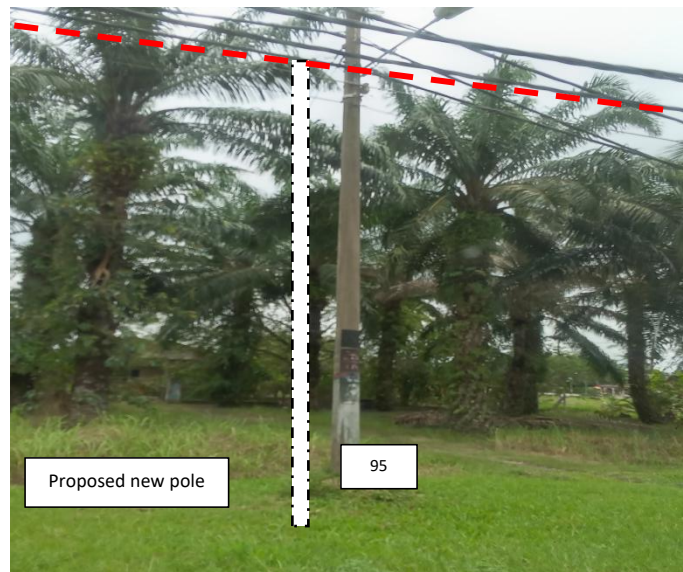
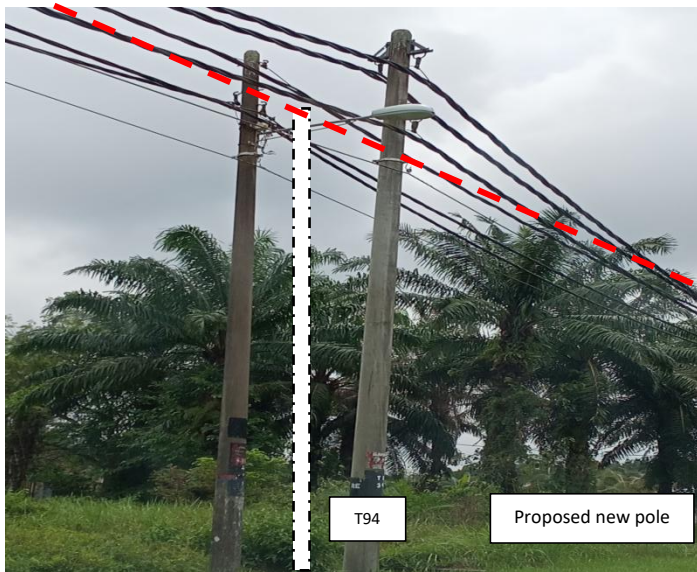
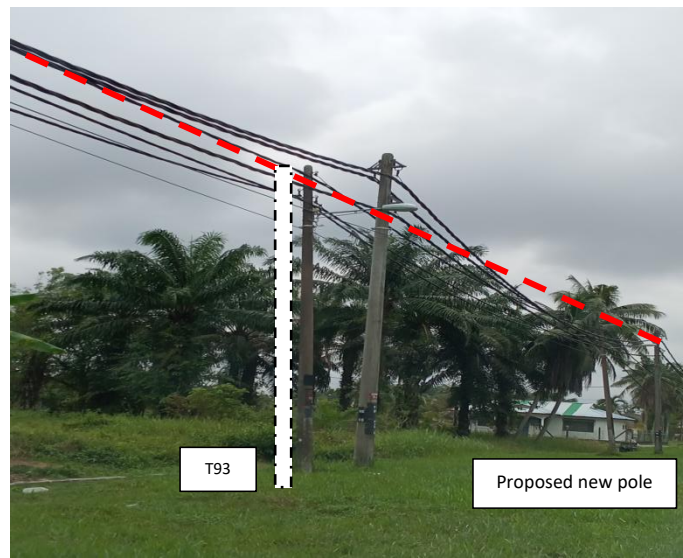
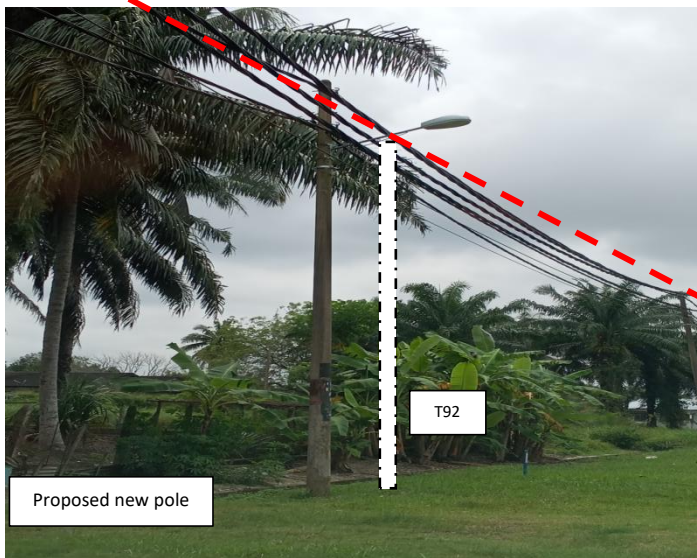
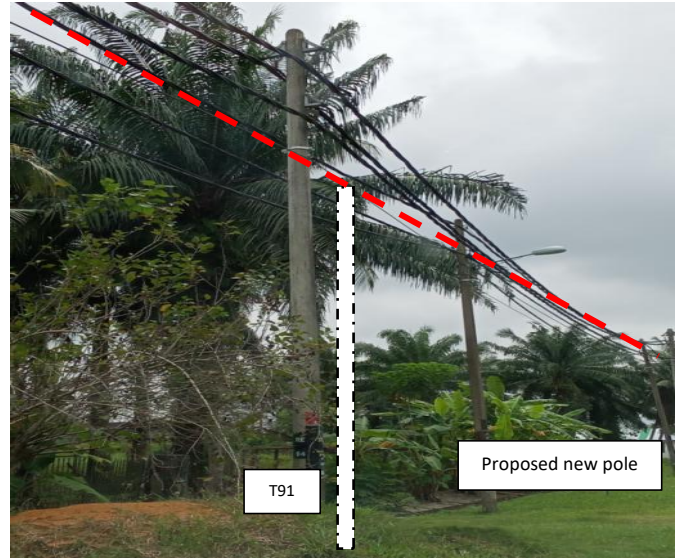
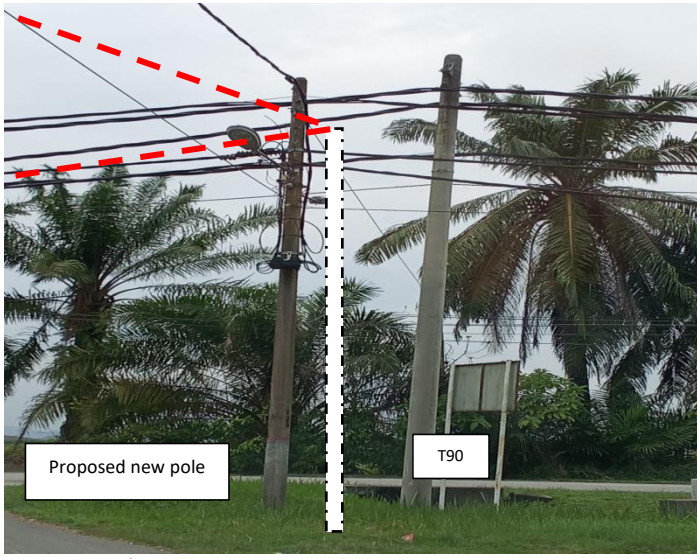


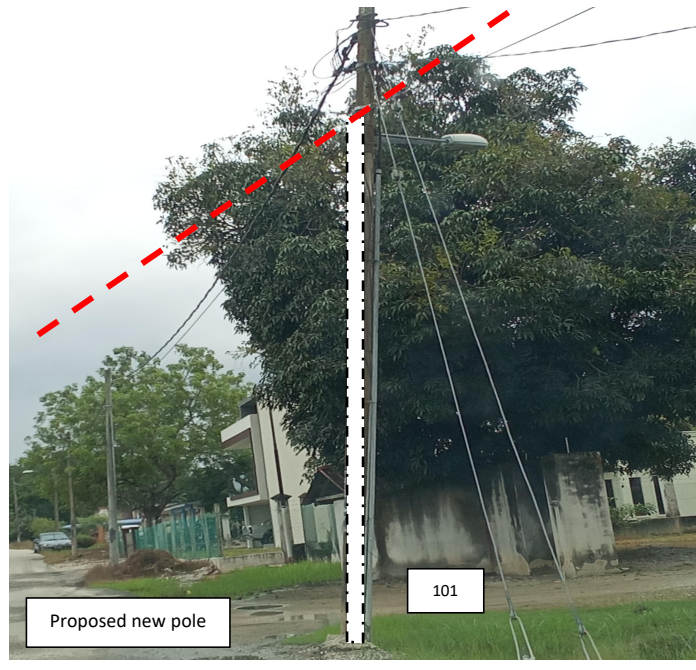
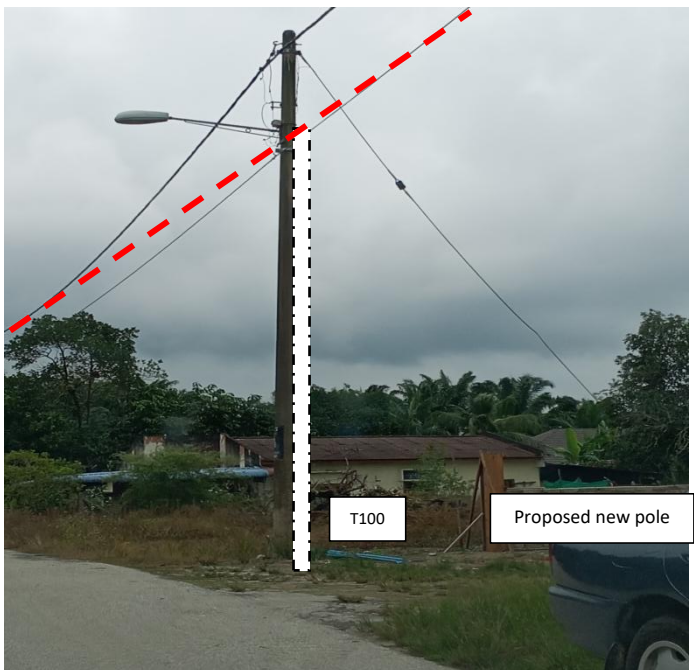
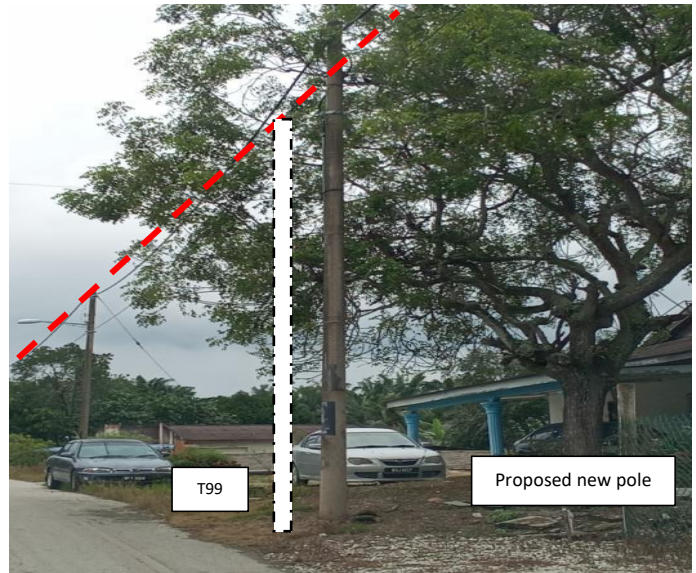
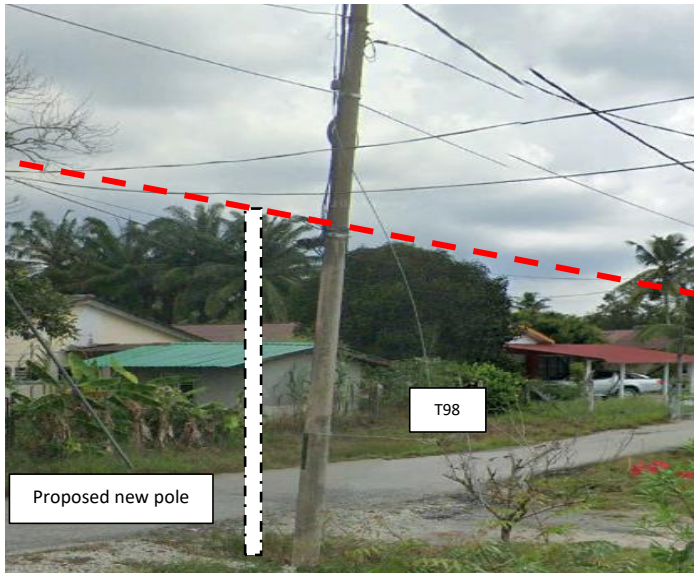
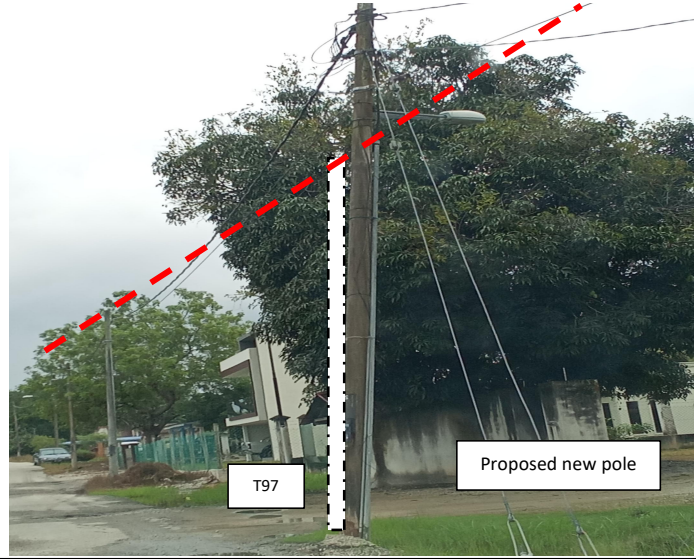
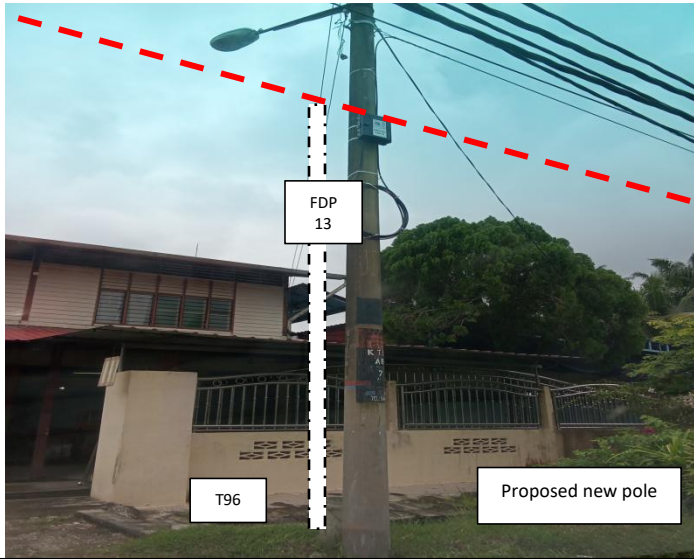


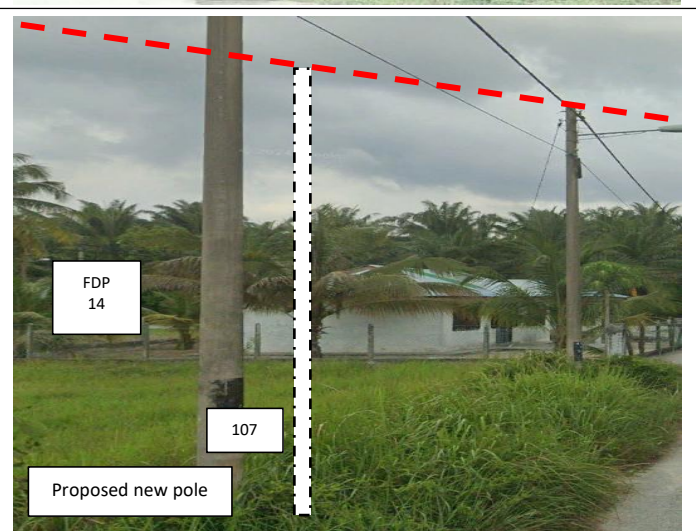
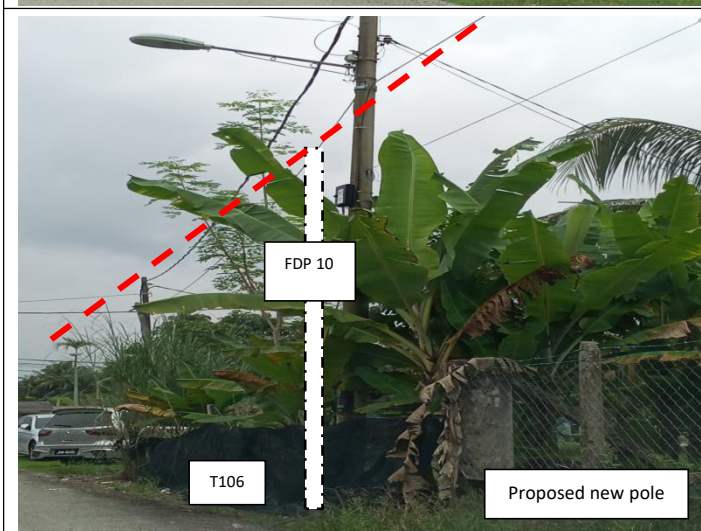
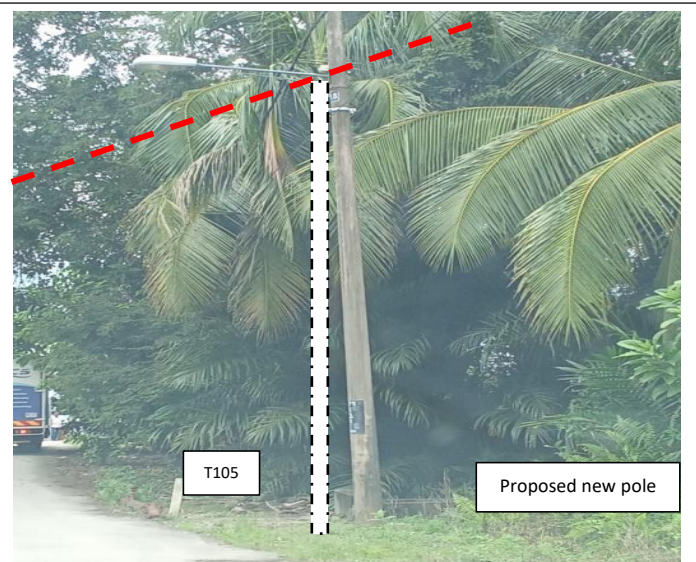
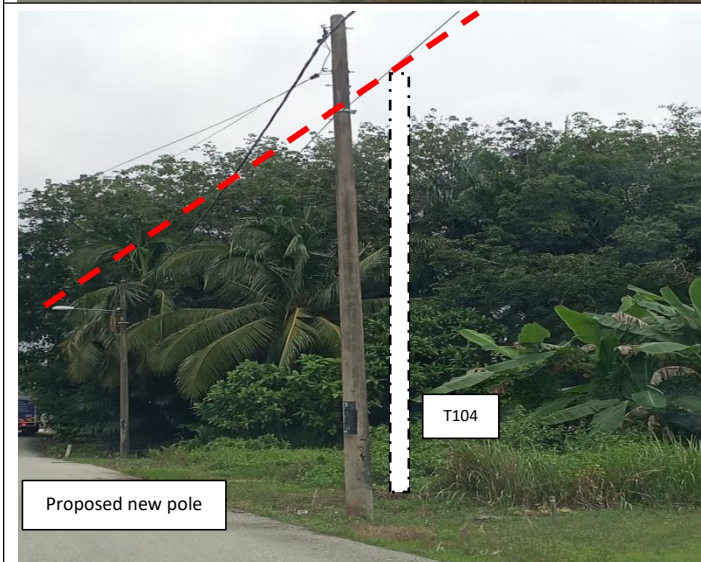
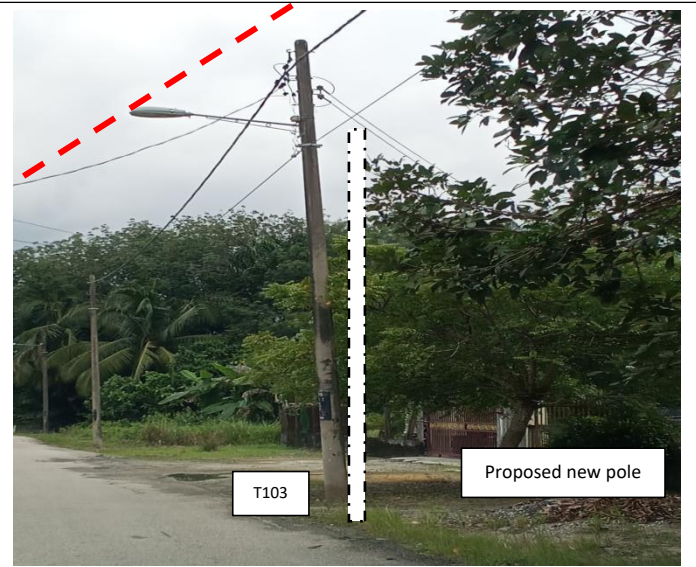
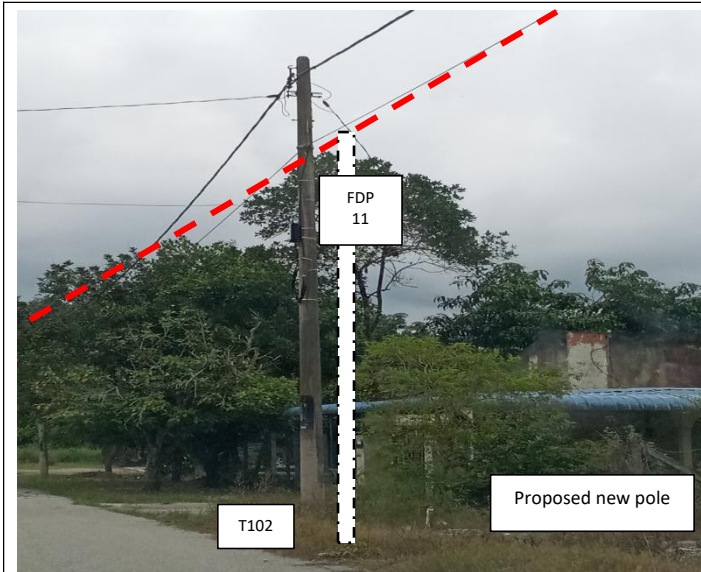


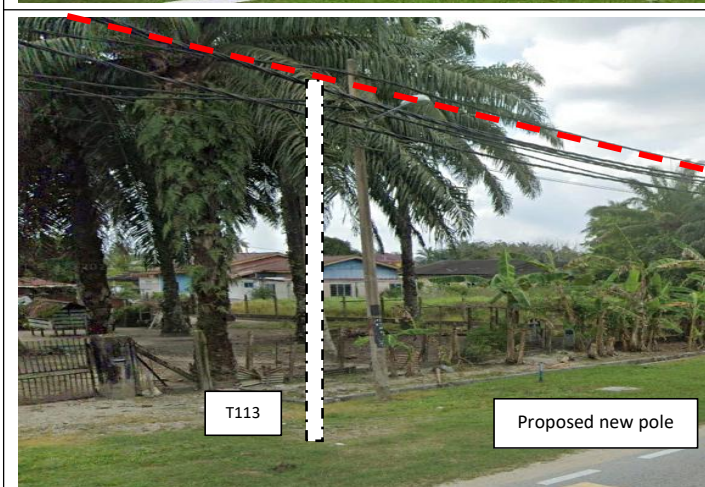
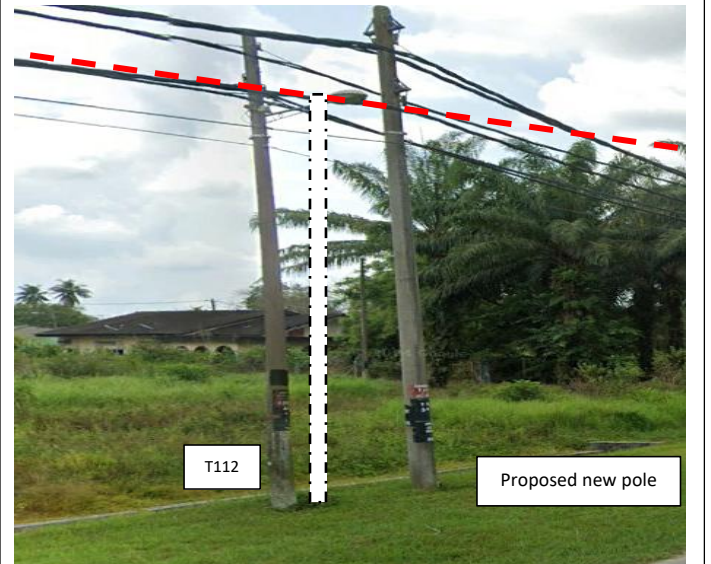
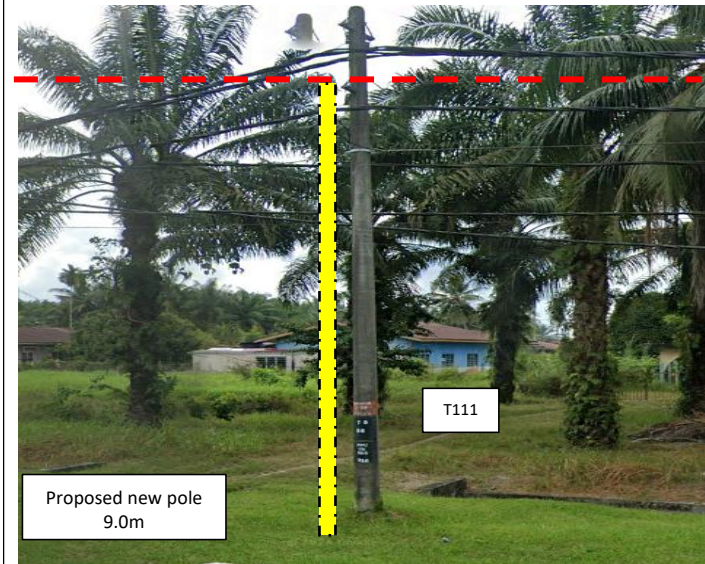
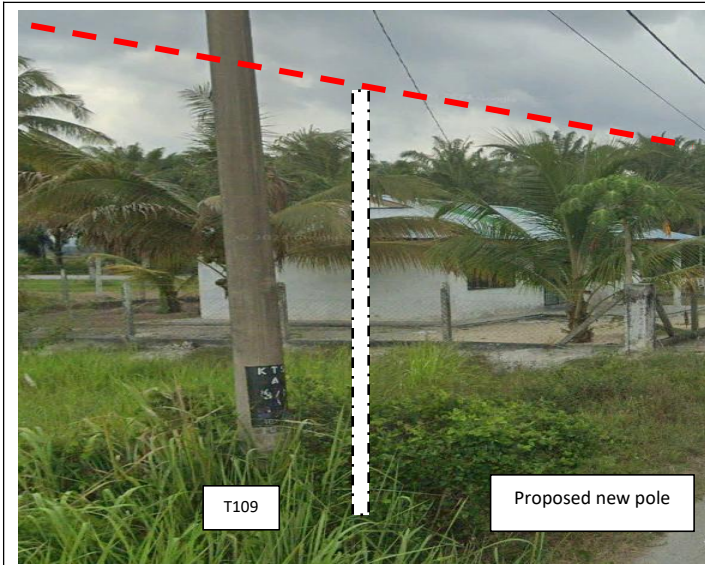












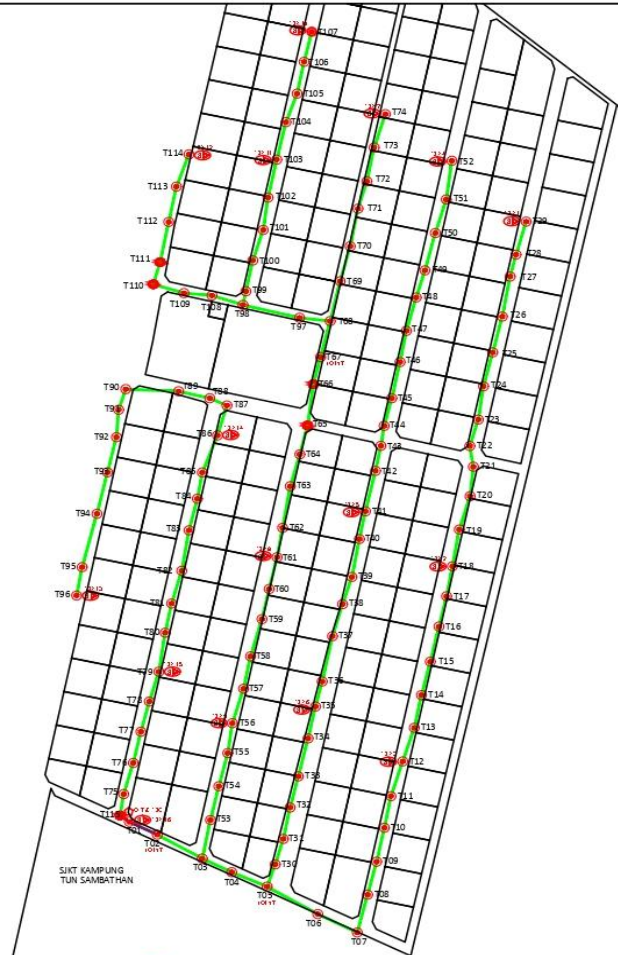
**7.0 3<sup>rd</sup> PARTIES DEPENDENCIES**



PROJEK PENYEDIAAN DAN PENYELENGGARAAN POINT OF PRESENT (POP) FASA 2: HAB INFRASTRUKTUR GENTIAN OPTIK BERHAMPIRAN DENGAN SEKOLAH, KAWASAN PERINDUSTRIAN, PREMIS KERAJAAN DAN KOMUNITI SEKITARNYA OLEH KEMENTERIAN KOMUNIKASI MALAYSIA - ZON UTARA (KKMM.400-11/17/132(1))



NO	LOCAL COUNCIL / AUTHORITY	REMARK
1	Majlis Perbandaran Manjung	3900M



12C FOC	Installed 1/4 / 1/8 / 1/32 splitter	Installed Pole (6m)	Suspension	New Manhole (PIT)	Micro-Trenching (Meter)	MH NO.
24C FOC	Installed Patch Cord	Installed Pole (7.5M)	Tension	New Manhole (RC7)	Temporary Infra (Meter)	Existing TMB Pole NO.
48C FOC	FOC	Installed Pole (6.7M)	Pole Ring	FDP Boundary	Loop / Coil (Meter)	New Pole NO.
96C FOC	Closure	Existing TMB Pole	FDP with (1/8) splitter	HDD (Meter)	Active Outdoor Cabinet	Closure NO.
144C FOC	Existing Closure	Installed Riser	Existing Manhole	Open Cut (Meter)	FOC NO.	FDP NO.

ACTUAL HOMEPASS :

KEY PLAN:

PROJECT OWNER:



MAIN CONTRACTOR:



SUB-CONTRACTOR:



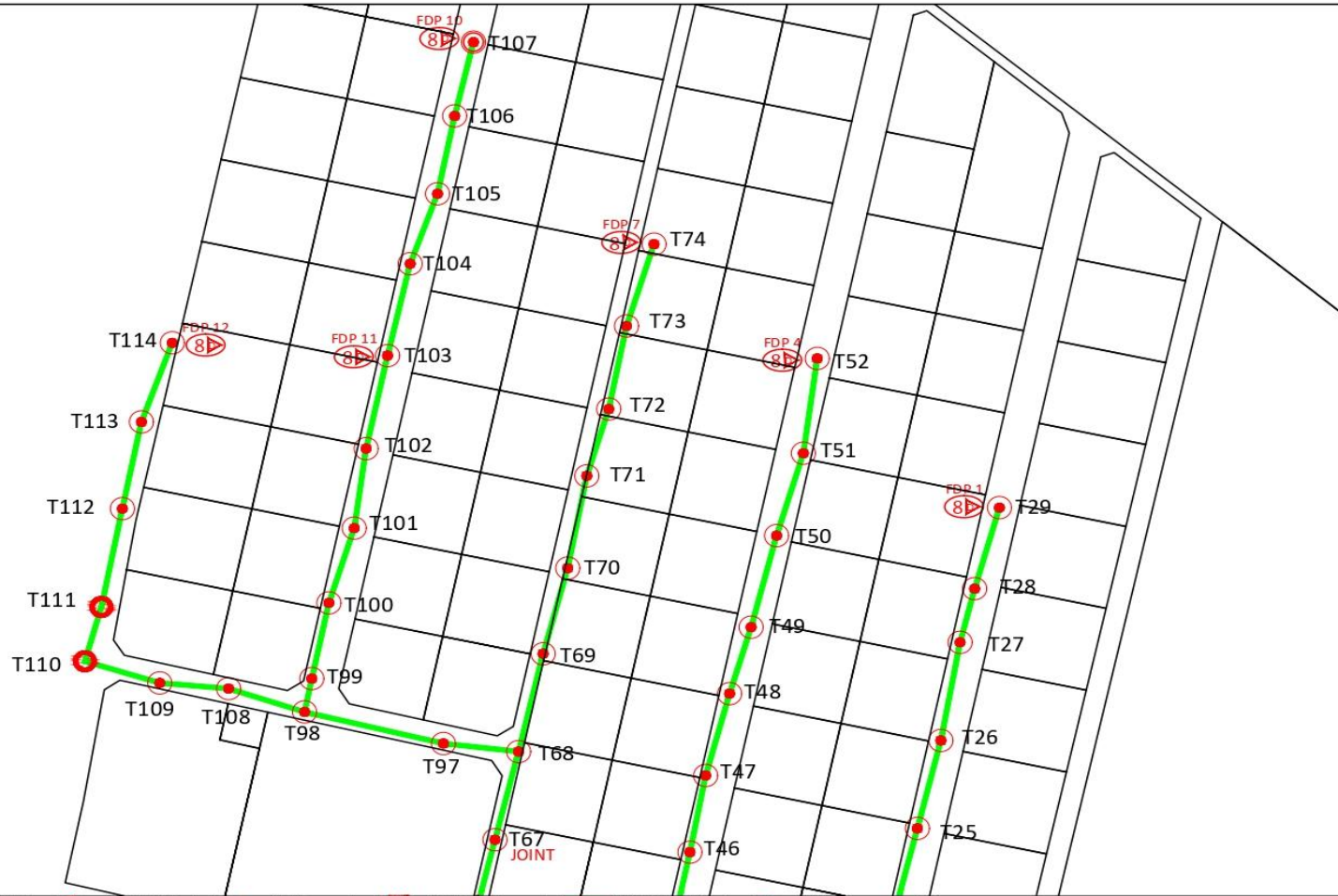
PROJECT TITLE:

PROJEK PENYEDIAAN DAN PENYELENGGARAAN PONT OF PRESENT (POP) FASA 2: IAB INFRASTRUKTUR GENTIAN OPTIK BERSAMIPRAN SEKOLAH, KAWASAN PENYUNDIRAN, PRISMA KEMAJUAN DAN KOMUNITI SEKITARNYA OLEH KEMENTERIAN KOMUNIKASI MALAYSIA ZON UTARA (KOMM-400-11/17/132(1))

DRAWING TITLE:

LAYOUT PLAN - SUKT KAMPUNG TUN SAMBATHAN

Design By : NFH	Date : 03 DEC 2024
Drawn By : NFH	Scale : NTS
Checked By : NFH	Job Number :
DRAWING NUMBER : T&H/APEX/LAYOUT/SMETHN/001	Sheet : 01 / 04
THIS PRINT AND ITS COPYRIGHT ARE THE PROPERTY OF T&H PANJI EMPIRE SDN BHD	
PROJECT PHASE:	Size :



# SECTION 1

12C FOC	Installed 1x4 / 1:8 / 1:32 splitter	Installed Pole (9m)	Suspension	New Manhole (PIT)	Micro-Trenching (Meter)	MH NO.
24C FOC	Installed Patch Cord	Installed Pole (7.5M)	Tension	New Manhole (RC7)	Temporary Joints (Meter)	TMS-1 Existing TMB Pole NO.
48C FOC	FDC	Installed Pole (6.7M)	Pole Ring	FDP Boundary	Loop / Coil (Meter)	New Pole NO.
96C FOC	Closure	Existing TMB Pole	FDP with (1:8) splitter	HDD (Meter)	Active Outdoor Cabinet	Closure NO.
144C FOC	Existing Closure	Installed Riser	Existing Manhole	Open Cut (Meter)	FDC NO.	FDP NO.

ACTUAL HOMEPASS :

KEY PLAN:

PROJECT OWNER:



MAIN CONTRACTOR:



SUB-CONTRACTOR:



PROJECT TITLE:

PROJEK PENYEDIAAN DAN PENYELANGGARAAN PONT OF PRESENT (POP) FASA 2: HAB INFRASTRUKTUR GENTIAN OPTIK BERAMPARAN SIKLUSAL, KAWASAN PERINDUSTRIAL, PRIGAS KERJAJAYA DAN KOMUNITI SEKITARNYA OLEH KEMENTERIAN KOMUNIKASI MALAYSIA ZON UTARA (KKM-400-11/17/132(1))

DRAWING TITLE:

LAYOUT PLAN - SKT KAMPUNG TUN SAMBATHAN

Design By :

NFH

Date :

03 DEC 2024

Drawn By :

NFH

Scale :

NTS

Checked By :

NFH

Job Number :

DRAWING NUMBER :

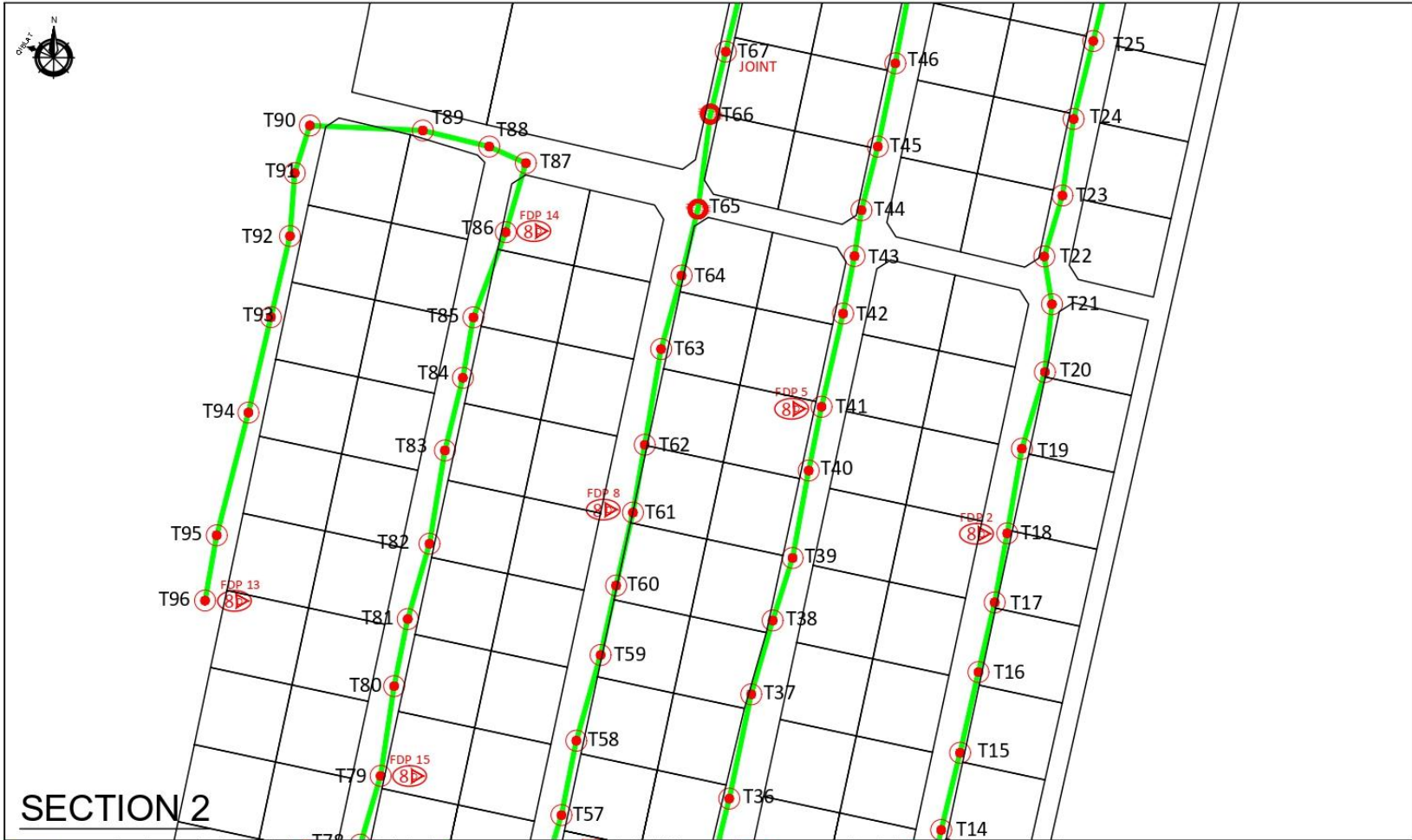
T&H/APEX/LAYOUT/SMETHN/002

Sheet :

02 / 04

PROJECT PHASE:

THIS PRINT AND ITS COPYRIGHT ARE THE PROPERTY OF TARI PANJAI EMPIRE SDN BHD.



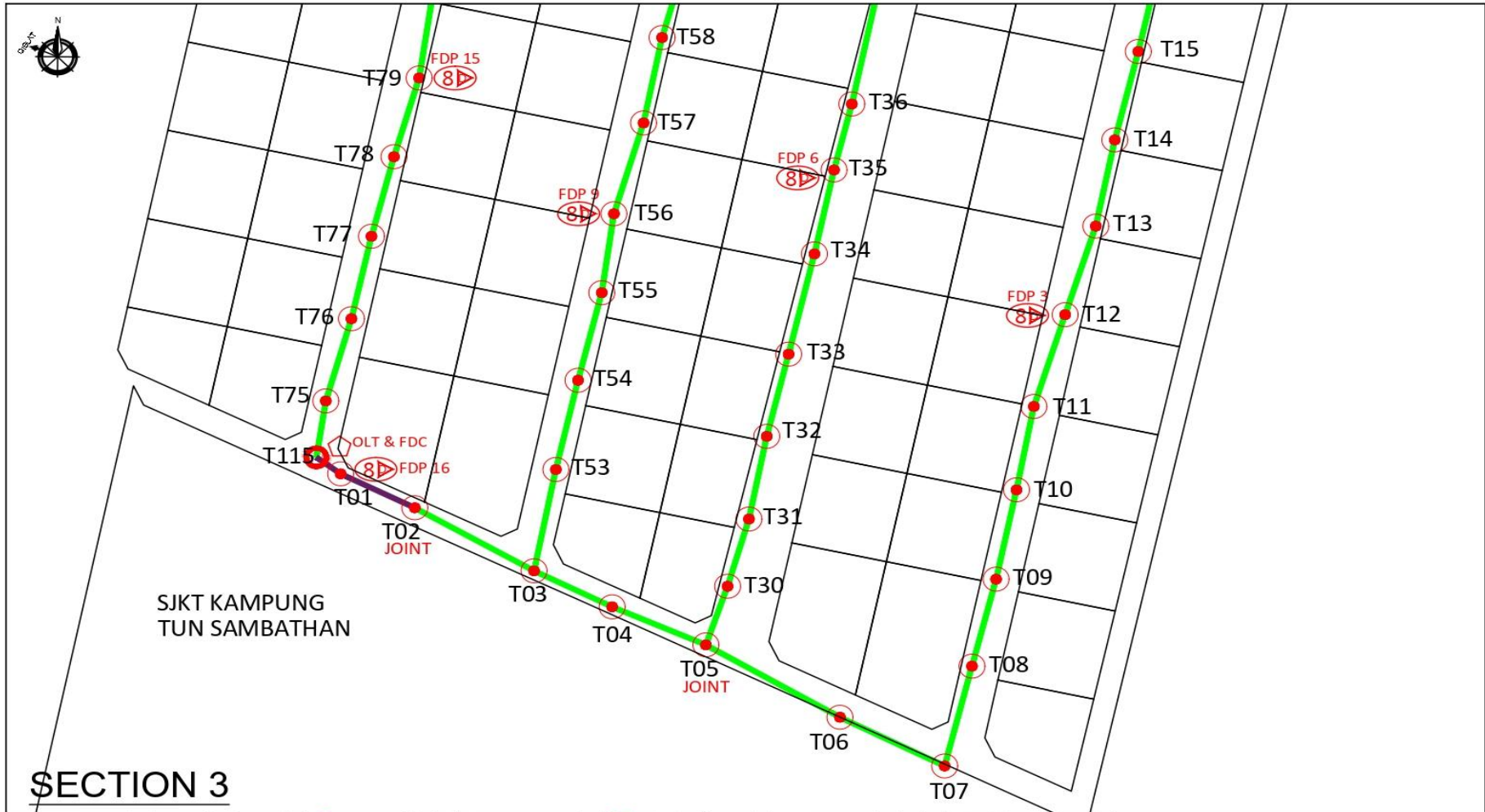
# SECTION 2

12C FOC	Installed 1x4 / 1x8 / 1x32 splitter	Installed Pole (9m)	Suppression Tension	ESB New Manhole (PI)	Micro-Trenching (Meter)	MH Mt. NO.
24C FOC	Installed Patch Cord	Installed Pole (7.5M)	Pole Ring	CEA New Manhole (RC7)	Temporary Infra (Meter)	TKS-I Existing TNB Pole NO.
48C FOC	FEC	Installed Pole (6.7M)	FDP with (1:8) splitter	FDP Boundary	Loop / Coil (Meter)	NI New Pole NO.
96C FOC	Closure	Existing TNB Pole	Existing Manhole	HED (Meter)	Active Outdoor Cabinet	CLB Closure NO.
144C FOC	Existing Closure	Installed Riser		Open Cut (Meter)	FOC NO.	JPI FDP NO.

<b>KEY PLAN:</b> 	<b>PROJECT OWNER:</b> 	<b>MAIN CONTRACTOR:</b> 	<b>SUB-CONTRACTOR:</b> 	<b>PROJECT TITLE:</b> PROJEK PENYEDIAAN DAN PENYELENGGARAAN/POINT OF PRESENT (POP) FASA 2: HAB INFRASTRUKTUR GERBANG OPTIK BERHAMPARAN SECARA KAWASAN FIBER/STRUKTUR, PREKUS KERANJAN DAN KOMUNITI SEKITARNYA OLEH KEMENTERIAN KOMUNIKASI MALAYSIA ZON UTARA (KOMM400-11/17/132(1))	<b>DRAWING TITLE:</b> LAYOUT PLAN - SIKIT KAMPUNG TUN SAMBATHAN	Design By : NFH Drawn By : NFH Checked By : NFH	Date : 03 DEC 2024 Scale : NTS Job Number :
				<b>DRAWING NUMBER:</b> T&H/APEX/LAYOUT/SMBTHN/003	PROJECT PHASE:	Sheet : 03 / 04 Size :	

ACTUAL HOMEPASS :



### SECTION 3

12C FOC	Installed 1:4 / 1:8 / 1:32 splitter	Installed Pole (9m)	Suspension	New Manhole (PIT)	Micro-trenching (Meter)	MH MH NO.
24C FOC	Installed Patch Cord	Installed Pole (7.5M)	Tension	New Manhole (RC7)	Temporary Infra (Meter)	TK-S-I Existing TNB Pole NO.
48C FOC	FDC	Installed Pole (6.7M)	Pole Ring	FDP Boundary	Loop / Coil (Meter)	P811 New Pole NO.
96C FOC	Closure	Existing TNB Pole	FDP with 1:8 splitter	HDD (Meter)	Active Outdoor Cabinet	CUBI Closure NO.
144C FOC	Existing Closure	Installed Riser	Existing Manhole	Open Cut (Meter)	CBI FOC NO.	3-3 FDP NO.

ACTUAL HOMEPASS :

KEY PLAN:	PROJECT OWNER: 	MAIN CONTRACTOR: 	SUB-CONTRACTOR: 	PROJECT TITLE: PROJEK PENYEDIAAN DAN PENYELENGARAANPOINT OF PRESENT (POP) FASA 2: HAB INFRASTRUKTUR GANTIAN OPTIK BERHAMPIRAN SEKOLAH, WILAYAH PERKOTAAN, PRINSIPAL KEMAJUAN DAN KOMUNITI SEKITARNYA OLEH KEMENTERIAN KOMUNIKASI MALAYSIA - ZON UTARA (900M-400-11/17/132(1))	DRAWING TITLE: LAYOUT PLAN - SJKT KAMPUNG TUN SAMBATHAN	Design By : NPH Date : 03 DEC 2024
						Drawn By : NPH Scale : NTS
						Checked By : NPH Job Number :
						DRAWING NUMBER : T&H/APEX/LAYOUT/SMITHN/004 Sheet : 04 / 04
						THIS PRINT AND ITS COPYRIGHT ARE THE PROPERTY OF T&H PANJI EMPIRE SDN BHD Size :