

## TECHNICAL PROPOSAL

### POP2 ABA8245 - SEKOLAH KEBANGSAAN SRI CHANGKAT (D-SIDE)

Company Name	:	WCWL COMMUNICATIONS SDN BHD
Company Address	:	127, Jalan PUJ 3/3, Taman Puncak Jalil 43300 Subang Jaya Selangor
Prepared By	:	Nur Syahidah Izzatie
Date	:	28/01/2025



POINT A

POINT B

#### Starting Point

Site / Boundary Name	:	SEKOLAH KEBANGSAAN SRI CHANGKAT
Address	:	Kampung Tersusun Air Kuning
District	:	Perak Tengah
Postcode	:	36600
State	:	Perak
GPS Coordinate	:	4.187085, 101.074259
LRD	:	A

#### End Point

Site / Boundary Name	:	SEKOLAH KEBANGSAAN SRI CHANGKAT
Address	:	Kampung Tersusun Air Kuning
District	:	Perak Tengah
Postcode	:	36600
State	:	Perak
GPS Coordinate	:	4.191311, 101.076066
LRD	:	B



PROJEK PENYEDIAAN DAN PENYELENGGARAAN POINT OF PRESENCE (POP) FASA 2: HAB INFRASTRUKTUR GENTIAN OPTIK BERHAMPIRAN DENGAN SEKOLAH, KAWASAN PERINDUSTRIAN, PREMIS KERAJAAN DAN KOMUNITI SEKITARNYA OLEH KEMENTERIAN KOMUNIKASI MALAYSIA - ZON UTARA (KKMM.400-11/17/132(1))



### Work Summary

No	Proposed Distance and Method	Unit	Qty
1	Horizontal Directional Drilling (HDD)	m	0
2	Carriage Way Open trench (CW)	m	0
3	Grass Verge Open Trenching (GV)	m	0
4	Micro trenching (MT)	m	0
	Total		0

	Other Information	Unit	Qty
1	Proposed Manhole	EA	0
2	Proposed Pole	EA	100
3	Joint Closure	EA	6
4	Estimated time required for completion	days	30



PROJEK PENYEDIAAN DAN PENYELENGGARAAN POINT OF PRESENCE (POP) FASA 2: HAB INFRASTRUKTUR GENTIAN OPTIK BERHAMPIRAN DENGAN SEKOLAH, KAWASAN PERINDUSTRIAN, PREMIS KERAJAAN DAN KOMUNITI SEKITARNYA OLEH KEMENTERIAN KOMUNIKASI MALAYSIA - ZON UTARA (KKMM.400-11/17/132(1))



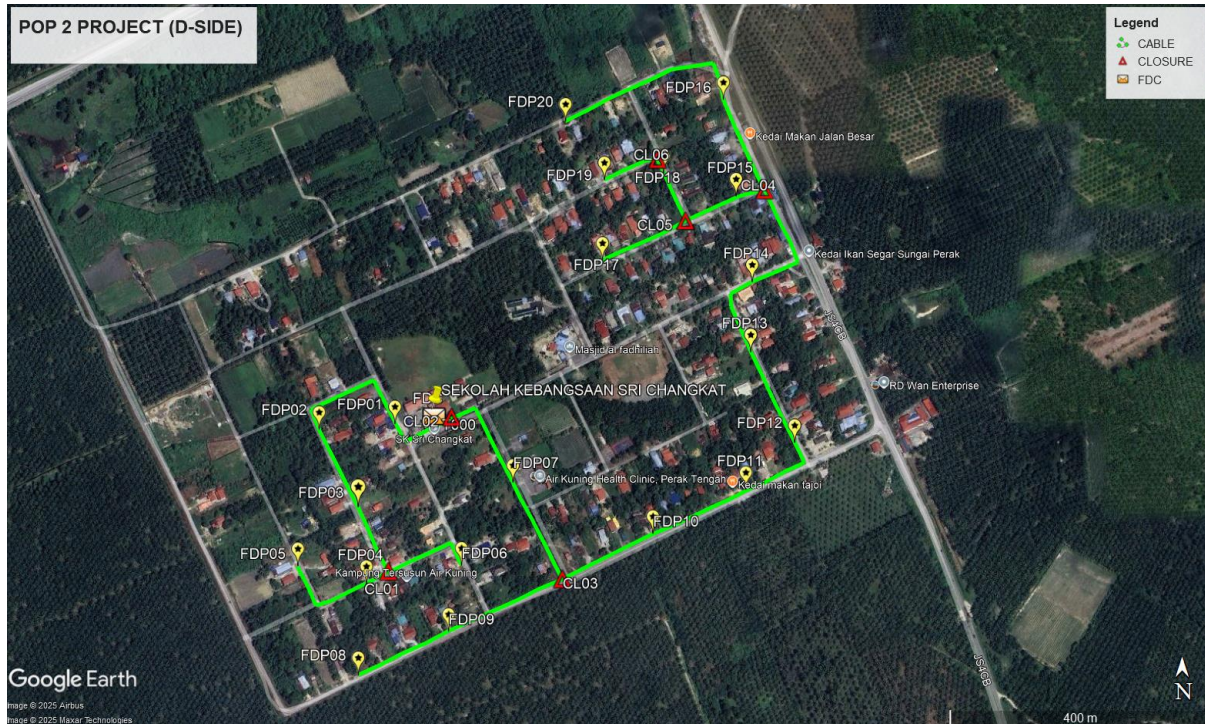
**Local Authority Summary**

1. Daerah Perak Tengah

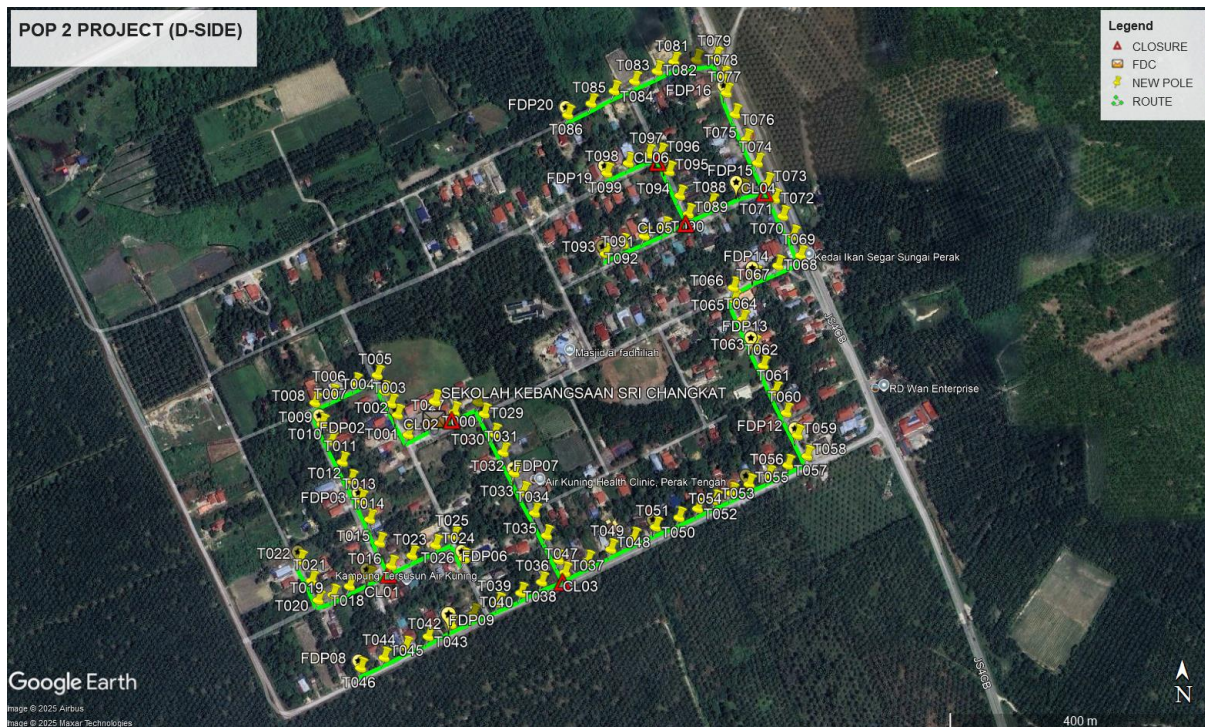
Bil	Items	Owner	Quantity	Distance
1	HDD	JKR	-	-
		Majlis	-	-
		Estate / Private Land	-	-
2	New Pole	JKR	-	-
		Majlis	100pcs	2935m
		Estate / Private Land	-	-
3	Existing TNB Pole	JKR	-	-
		Majlis	-	-
		Estate / Private Land	-	-
Total				2935m

Site Plan – KMZ (Overview site area)

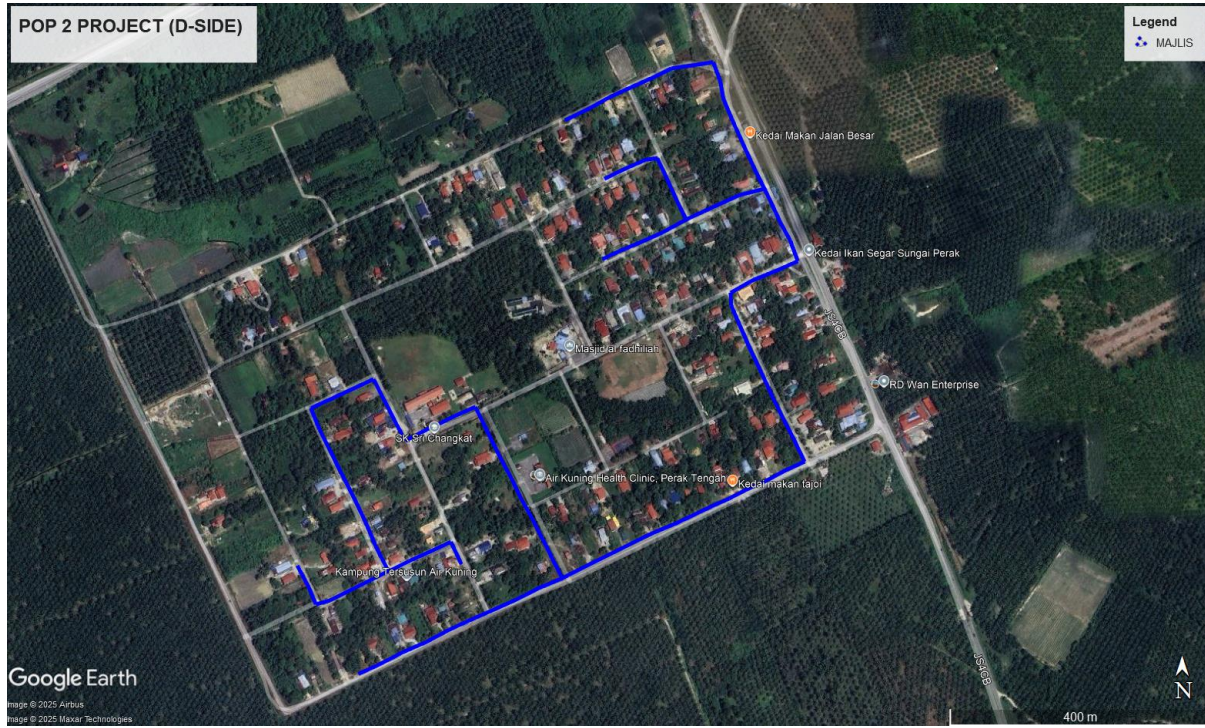
Proposed FDP and Closure



Proposed New Pole



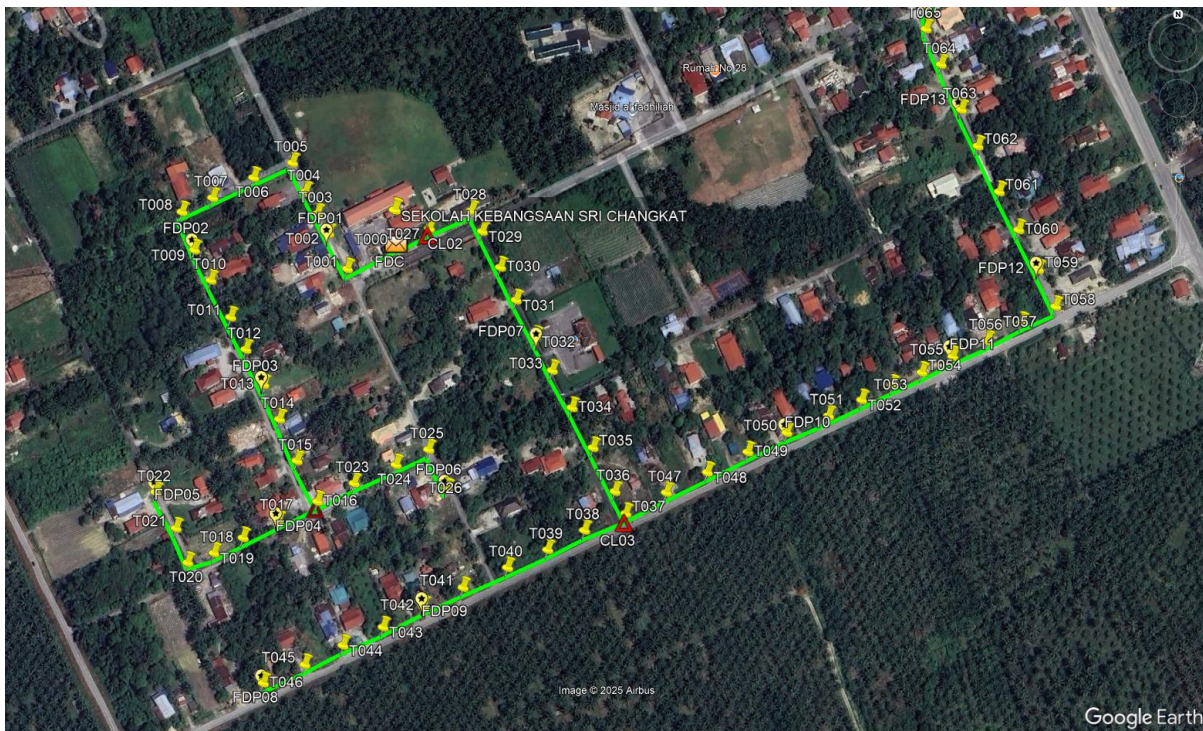
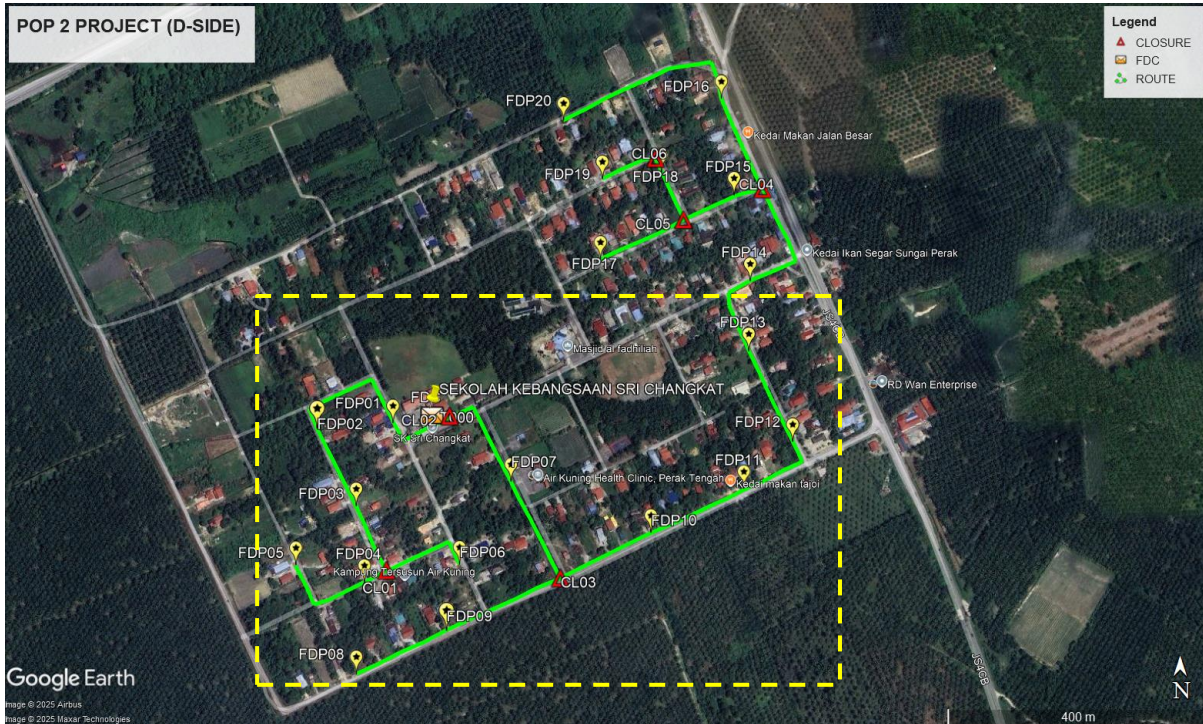
**Site Plan – KMZ Routing (All Local Authority)**



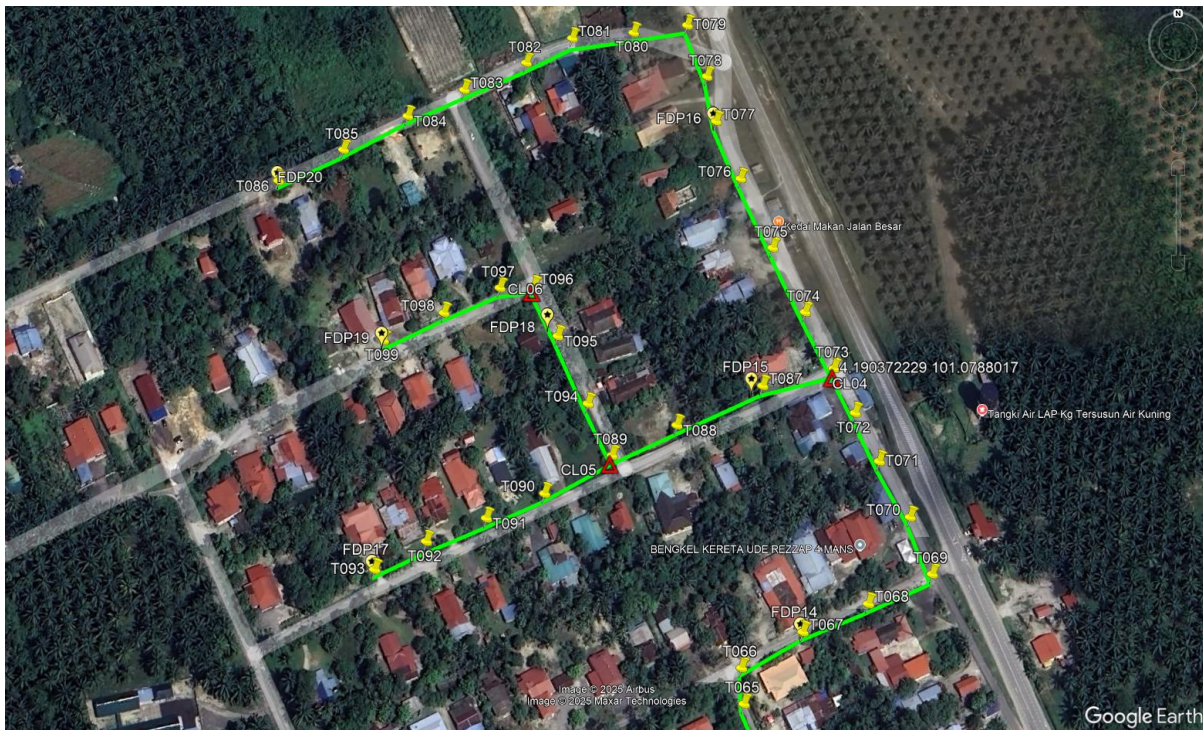
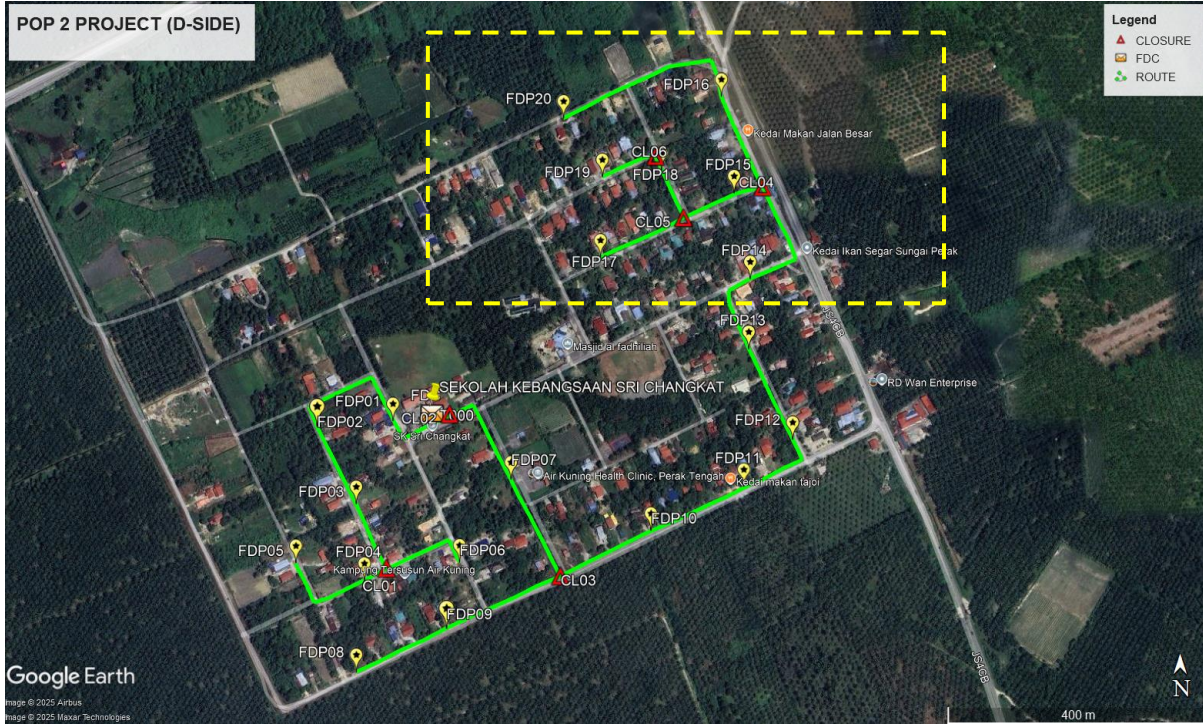
**Blue Colour – Majlis Perbandaran Perak Tengah**

Site Plan – KMZ Routing (All site area)

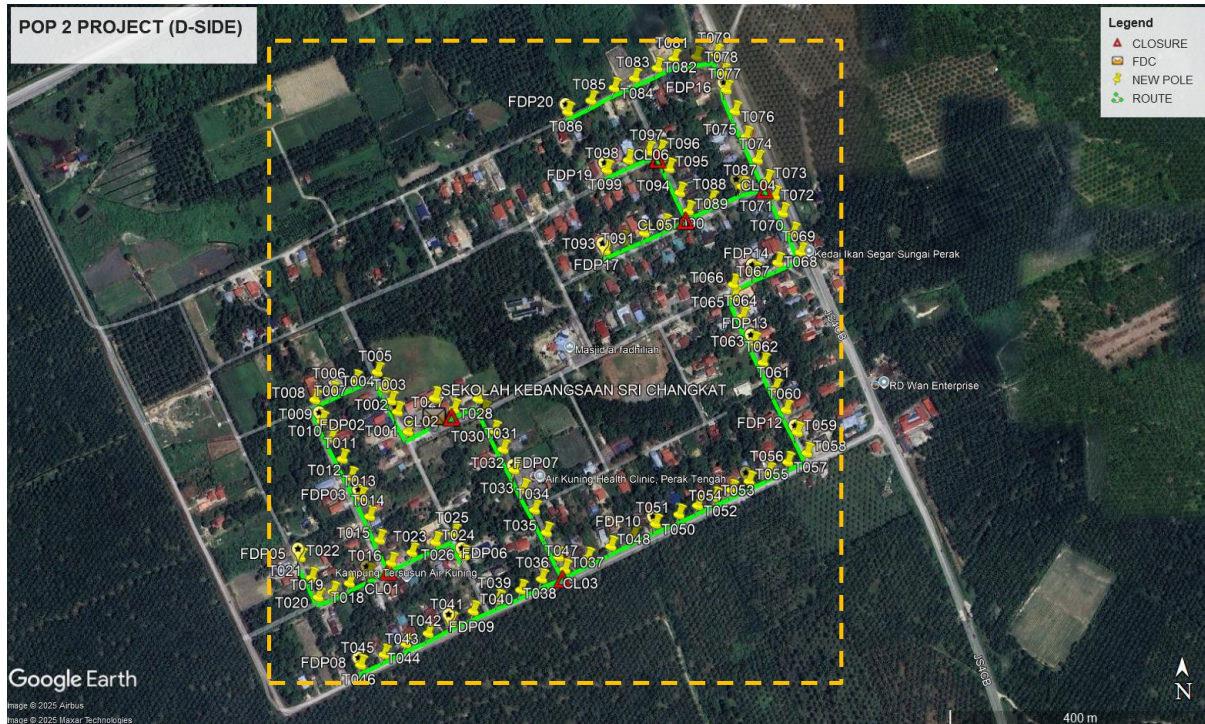
Route 1



**Route 2**



Site Plan – KMZ Routing (Proposed new Pole)



**Overall Pole (Proposed New)**

No.	Pole & Manhole ID	Distance (M)	Latitude	Longitude	Local Authority
1	T000 (9m)	0	4.187097	101.0743	Majlis Perbandaran Perak Tengah
2	T001 (9m)	47.2	4.186925255	101.0739	Majlis Perbandaran Perak Tengah
3	T002	34.47	4.187199057	101.0737	Majlis Perbandaran Perak Tengah
4	T003	19.49	4.187350458	101.0736	Majlis Perbandaran Perak Tengah
5	T004	21.57	4.18752122	101.0735	Majlis Perbandaran Perak Tengah
6	T005	27.05	4.187742527	101.0734	Majlis Perbandaran Perak Tengah
7	T006	35.84	4.18762857	101.0731	Majlis Perbandaran Perak Tengah
8	T007	39.29	4.187473219	101.0728	Majlis Perbandaran Perak Tengah
9	T008	29.1	4.18736415	101.0726	Majlis Perbandaran Perak Tengah
10	T009	34.37	4.187070827	101.0727	Majlis Perbandaran Perak Tengah
11	T010	29.59	4.186837658	101.0728	Majlis Perbandaran Perak Tengah
12	T011	35.96	4.186552859	101.073	Majlis Perbandaran Perak Tengah
13	T012	30.67	4.186303803	101.0731	Majlis Perbandaran Perak Tengah
14	T013	33.79	4.186033265	101.0732	Majlis Perbandaran Perak Tengah
15	T014	32.68	4.18576643	101.0733	Majlis Perbandaran Perak Tengah
16	T015	38.8	4.185445447	101.0735	Majlis Perbandaran Perak Tengah
17	T016 (9m)	39.1	4.185132247	101.0736	Majlis Perbandaran Perak Tengah
18	T017 (9m)	37.75	4.184982909	101.0733	Majlis Perbandaran Perak Tengah
19	T018	33.54	4.184852655	101.0731	Majlis Perbandaran Perak Tengah
20	T019 (9m)	28.26	4.18473435	101.0728	Majlis Perbandaran Perak Tengah
21	T020 (9m)	24.15	4.184660761	101.0726	Majlis Perbandaran Perak Tengah
22	T021	31.22	4.184926081	101.0725	Majlis Perbandaran Perak Tengah
23	T022	35.44	4.185203661	101.0724	Majlis Perbandaran Perak Tengah
24	T023	171.02	4.185272486	101.0739	Majlis Perbandaran Perak Tengah
25	T024	39.51	4.185414928	101.0742	Majlis Perbandaran Perak Tengah
26	T025 (9m)	30.98	4.185532919	101.0745	Majlis Perbandaran Perak Tengah
27	T026 (9m)	37.27	4.185229915	101.0746	Majlis Perbandaran Perak Tengah
28	T027	223.81	4.187235816	101.0745	Majlis Perbandaran Perak Tengah
29	T028 (9m)	39.34	4.187373417	101.0748	Majlis Perbandaran Perak Tengah
30	T029 (9m)	20.12	4.187213689	101.0749	Majlis Perbandaran Perak Tengah
31	T030	34.45	4.186937667	101.075	Majlis Perbandaran Perak Tengah
32	T031	31.25	4.186684693	101.0752	Majlis Perbandaran Perak Tengah
33	T032	35.43	4.186403928	101.0753	Majlis Perbandaran Perak Tengah
34	T033	32.49	4.186142333	101.0754	Majlis Perbandaran Perak Tengah
35	T034	36.23	4.185855252	101.0756	Majlis Perbandaran Perak Tengah

36	T035	38.76	4.185547216	101.0758	Majlis Perbandaran Perak Tengah
37	T036	42.06	4.185209674	101.0759	Majlis Perbandaran Perak Tengah
38	T037 (9m)	21.14	4.185039495	101.076	Majlis Perbandaran Perak Tengah
39	T038	38.44	4.184909697	101.0757	Majlis Perbandaran Perak Tengah
40	T039	35.8	4.184760243	101.0754	Majlis Perbandaran Perak Tengah
41	T040 (9m)	37.87	4.184622817	101.0751	Majlis Perbandaran Perak Tengah
42	T041 (9m)	41.93	4.184468761	101.0748	Majlis Perbandaran Perak Tengah
43	T042	37.52	4.184328181	101.0745	Majlis Perbandaran Perak Tengah
44	T043	39.31	4.184163885	101.0741	Majlis Perbandaran Perak Tengah
45	T044	37.97	4.184022614	101.0738	Majlis Perbandaran Perak Tengah
46	T045	36.82	4.183874356	101.0735	Majlis Perbandaran Perak Tengah
47	T046	39.19	4.18373245	101.0732	Majlis Perbandaran Perak Tengah
48	T047 (9m)	384.02	4.185200687	101.0763	Majlis Perbandaran Perak Tengah
49	T048	39.38	4.185356927	101.0767	Majlis Perbandaran Perak Tengah
50	T049	39.04	4.185513915	101.077	Majlis Perbandaran Perak Tengah
51	T050	37.4	4.185663041	101.0773	Majlis Perbandaran Perak Tengah
52	T051	38.75	4.18579296	101.0776	Majlis Perbandaran Perak Tengah
53	T052	31.67	4.185915127	101.0778	Majlis Perbandaran Perak Tengah
54	T053	29.19	4.186026244	101.0781	Majlis Perbandaran Perak Tengah
55	T054	27.83	4.186126885	101.0783	Majlis Perbandaran Perak Tengah
56	T055	29.97	4.186248444	101.0786	Majlis Perbandaran Perak Tengah
57	T056	32.73	4.186370829	101.0788	Majlis Perbandaran Perak Tengah
58	T057	33.37	4.186511497	101.0791	Majlis Perbandaran Perak Tengah
59	T058	32.35	4.186634817	101.0793	Majlis Perbandaran Perak Tengah
60	T059	34.93	4.18691904	101.0792	Majlis Perbandaran Perak Tengah
61	T060	38.2	4.187226331	101.0791	Majlis Perbandaran Perak Tengah
62	T061	36.69	4.187519089	101.0789	Majlis Perbandaran Perak Tengah
63	T062	43.36	4.18787175	101.0787	Majlis Perbandaran Perak Tengah
64	T063	34.26	4.188152117	101.0786	Majlis Perbandaran Perak Tengah
65	T064	42.55	4.188500344	101.0785	Majlis Perbandaran Perak Tengah
66	T065 (9m)	33.11	4.188774278	101.0783	Majlis Perbandaran Perak Tengah
67	T066 (9m)	18.67	4.188941716	101.0783	Majlis Perbandaran Perak Tengah
68	T067	37.9	4.189109761	101.0786	Majlis Perbandaran Perak Tengah
69	T068	38.19	4.189242294	101.0789	Majlis Perbandaran Perak Tengah
70	T069 (9m)	37.88	4.189381944	101.0793	Majlis Perbandaran Perak Tengah
71	T070 (9m)	32.17	4.189653295	101.0792	Majlis Perbandaran Perak Tengah
72	T071	33.77	4.189920684	101.079	Majlis Perbandaran Perak Tengah
73	T072	28.91	4.190154934	101.0789	Majlis Perbandaran Perak Tengah
74	T073 (9m)	26.64	4.190372229	101.0788	Majlis Perbandaran Perak Tengah



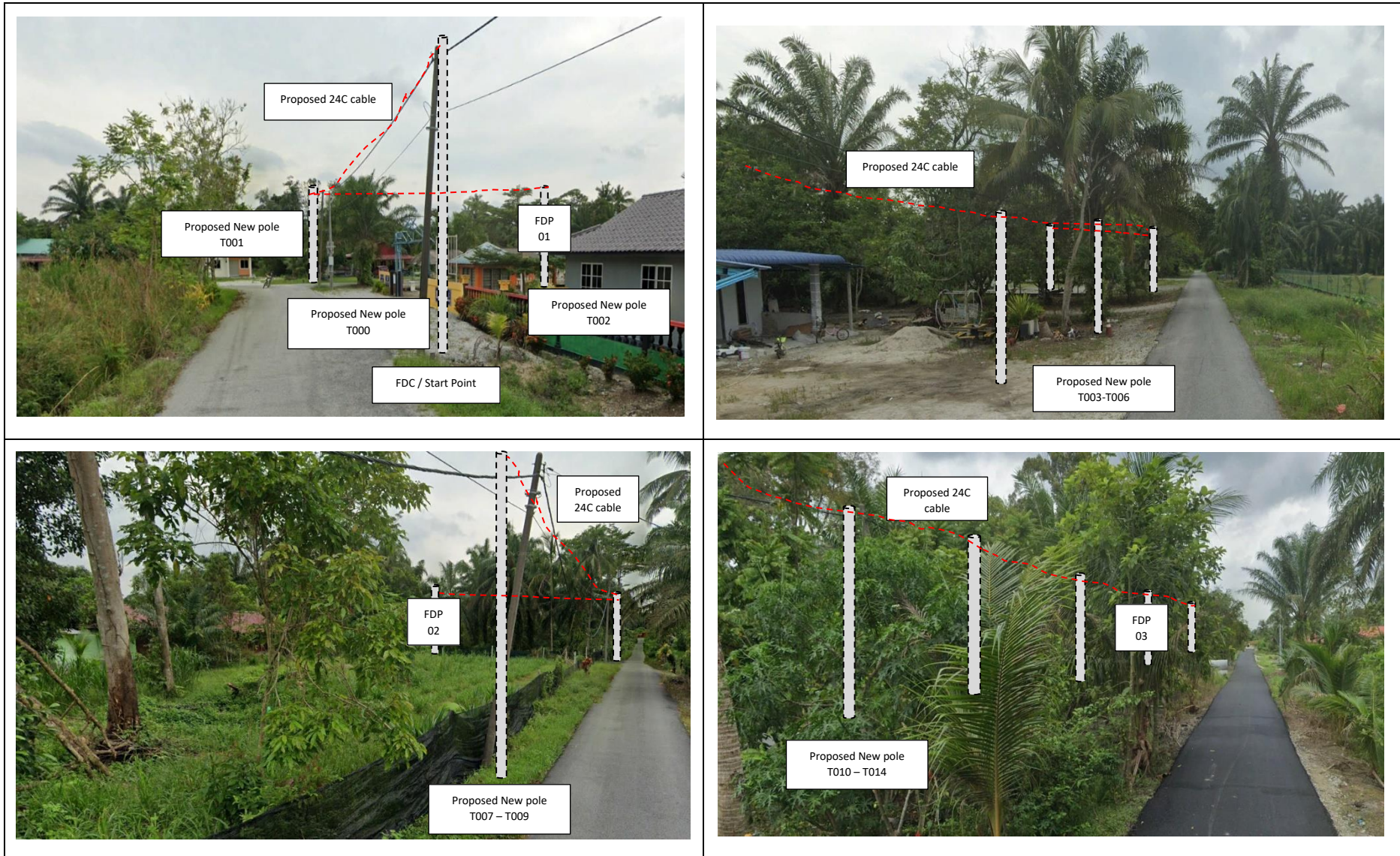
PROJEK PENYEDIAAN DAN PENYELENGGARAAN POINT OF PRESENCE (POP) FASA 2: HAB INFRASTRUKTUR GENTIAN OPTIK BERHAMPIRAN DENGAN SEKOLAH, KAWASAN PERINDUSTRIAN, PREMIS KERAJAAN DAN KOMUNITI SEKITARNYA OLEH KEMENTERIAN KOMUNIKASI MALAYSIA - ZON UTARA (KKMM.400-11/17/132(1))

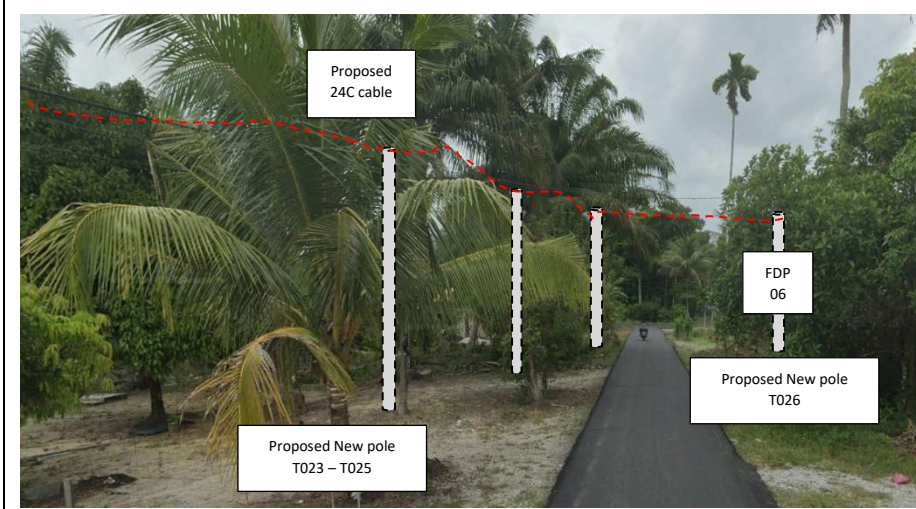
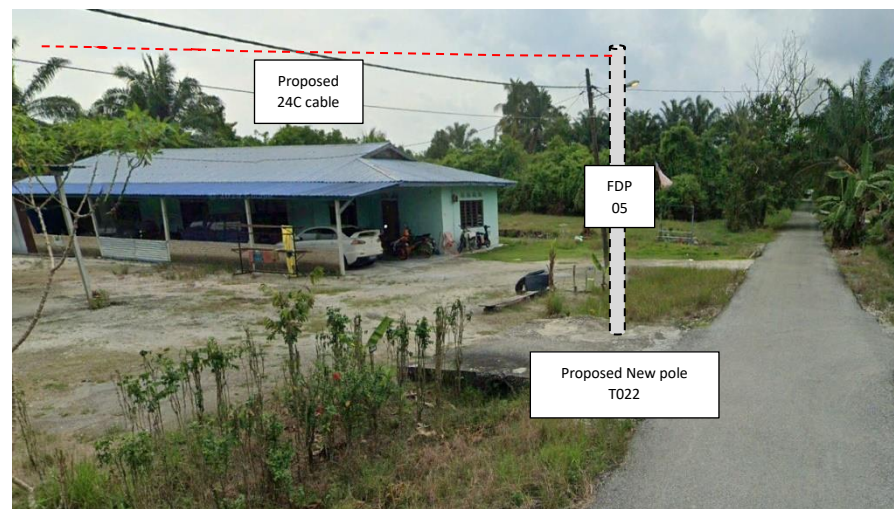
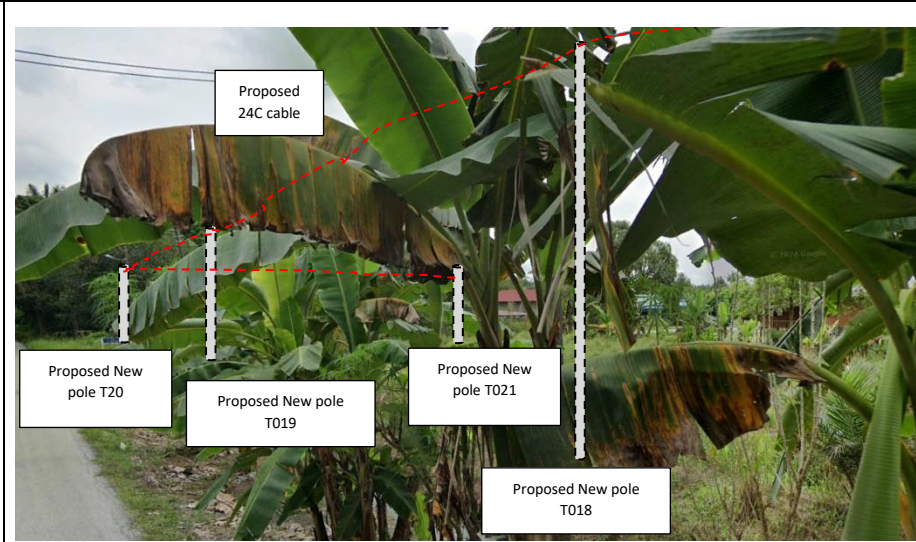
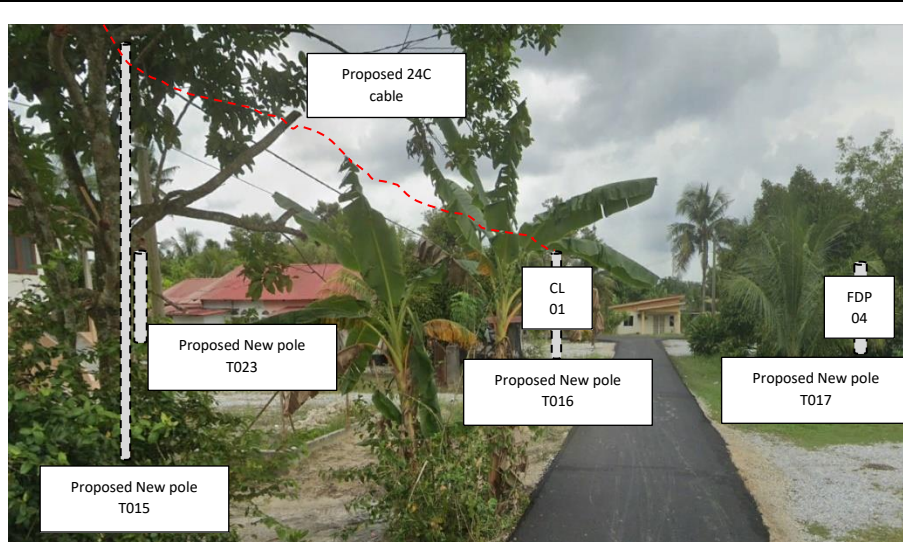


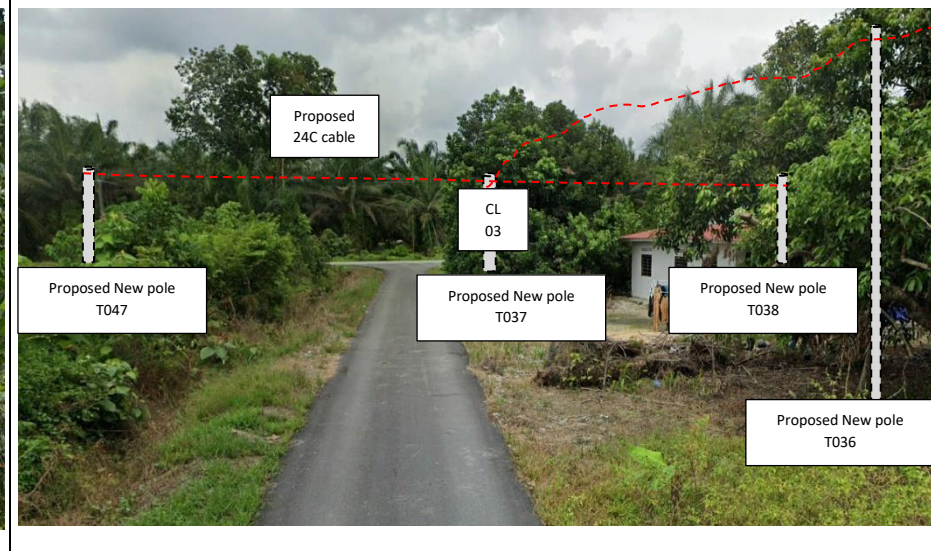
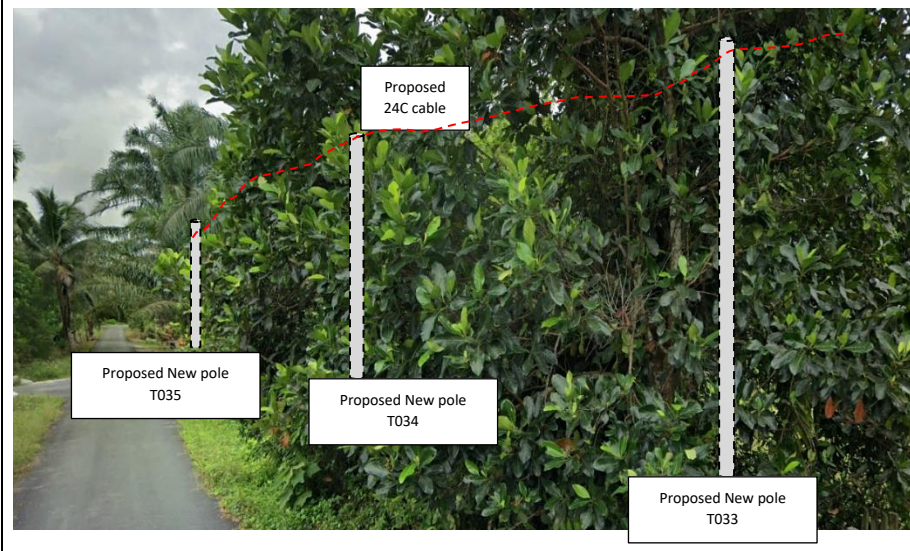
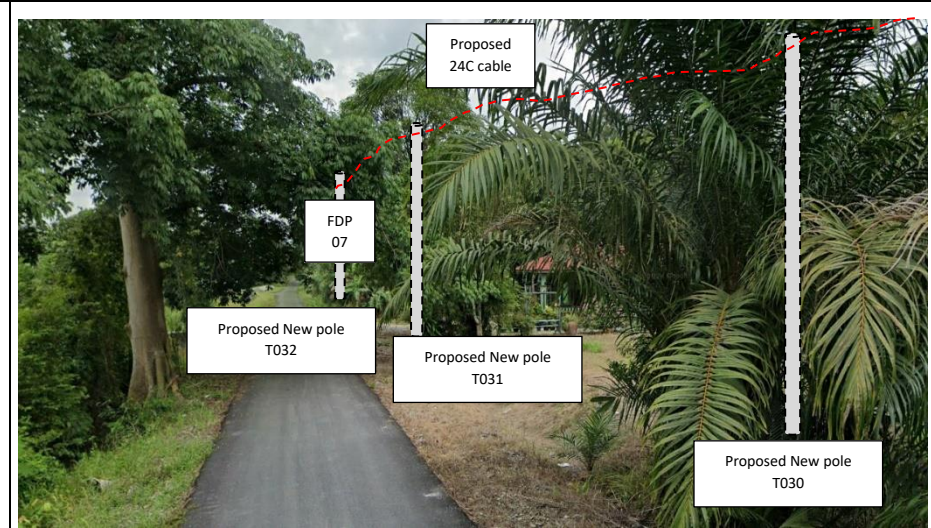
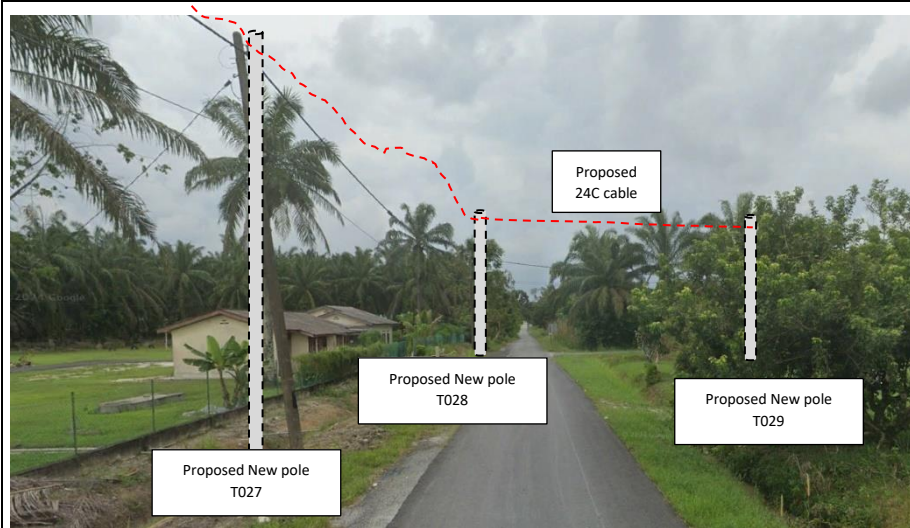
75	T074 (9m)	34.3	4.190648944	101.0787	Majlis Perbandaran Perak Tengah
76	T075	39.53	4.19096834	101.0785	Majlis Perbandaran Perak Tengah
77	T076	42.31	4.191315527	101.0784	Majlis Perbandaran Perak Tengah
78	T077	34.96	4.191606305	101.0782	Majlis Perbandaran Perak Tengah
79	T078 (9m)	26.05	4.191836114	101.0782	Majlis Perbandaran Perak Tengah
80	T079 (9m)	31.33	4.192100376	101.0781	Majlis Perbandaran Perak Tengah
81	T080 (9m)	30.4	4.192061727	101.0778	Majlis Perbandaran Perak Tengah
82	T081	34.51	4.192033348	101.0775	Majlis Perbandaran Perak Tengah
83	T082	29.26	4.191906393	101.0773	Majlis Perbandaran Perak Tengah
84	T083 (9m)	37.83	4.191767335	101.077	Majlis Perbandaran Perak Tengah
85	T084 (9m)	34.63	4.19163344	101.0767	Majlis Perbandaran Perak Tengah
86	T085	40.22	4.191462251	101.0764	Majlis Perbandaran Perak Tengah
87	T086	39.64	4.191305139	101.0761	Majlis Perbandaran Perak Tengah
88	T087 (9m)	289.57	4.190287292	101.0785	Majlis Perbandaran Perak Tengah
89	T088 (9m)	51.38	4.190095819	101.078	Majlis Perbandaran Perak Tengah
90	T089 (9m)	38.81	4.189949232	101.0777	Majlis Perbandaran Perak Tengah
91	T090	41.67	4.189766428	101.0774	Majlis Perbandaran Perak Tengah
92	T091	33.9	4.189648471	101.0771	Majlis Perbandaran Perak Tengah
93	T092	34.42	4.189537918	101.0768	Majlis Perbandaran Perak Tengah
94	T093	31.27	4.18940406	101.0766	Majlis Perbandaran Perak Tengah
95	T094	144.54	4.190200361	101.0776	Majlis Perbandaran Perak Tengah
96	T095	40.32	4.190530908	101.0775	Majlis Perbandaran Perak Tengah
97	T096 (9m)	30.3	4.190776123	101.0773	Majlis Perbandaran Perak Tengah
98	T097 (9m)	18.74	4.190769233	101.0772	Majlis Perbandaran Perak Tengah
99	T098	33.43	4.190645417	101.0769	Majlis Perbandaran Perak Tengah
100	T099	36.16	4.19050994	101.0766	Majlis Perbandaran Perak Tengah

Type	7.5m	9m	Total
No of Pole	70	30	100

Site Photos – Proposed to install pole

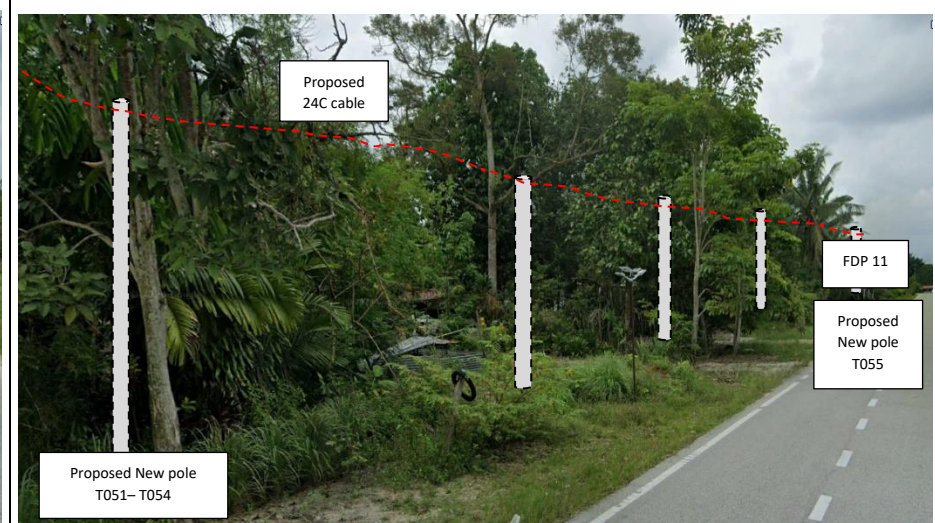
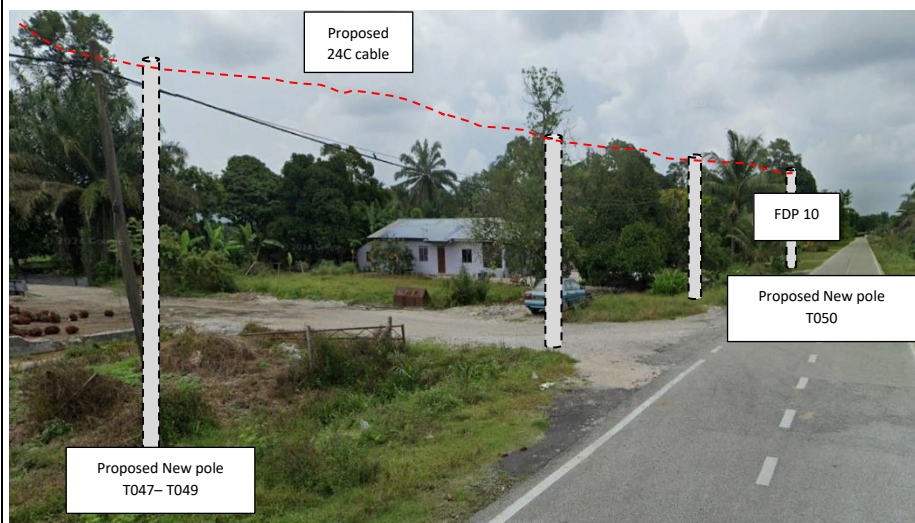
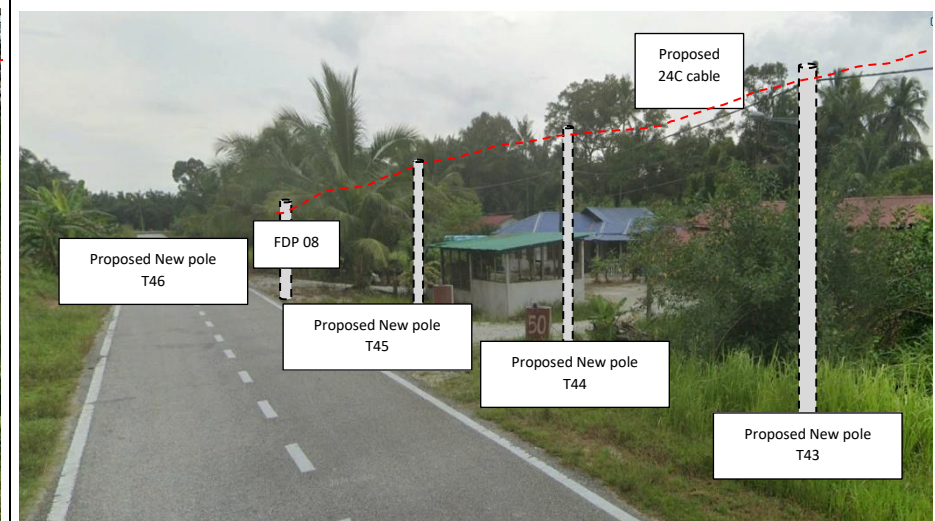
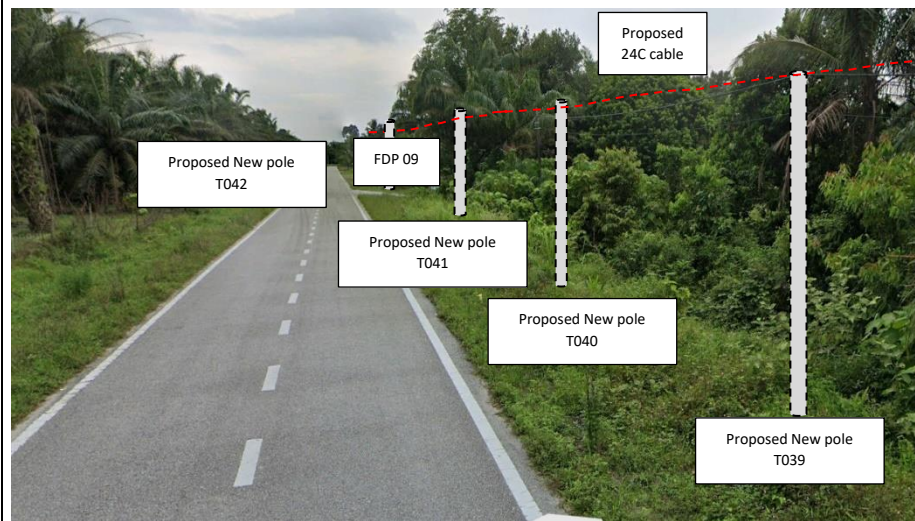






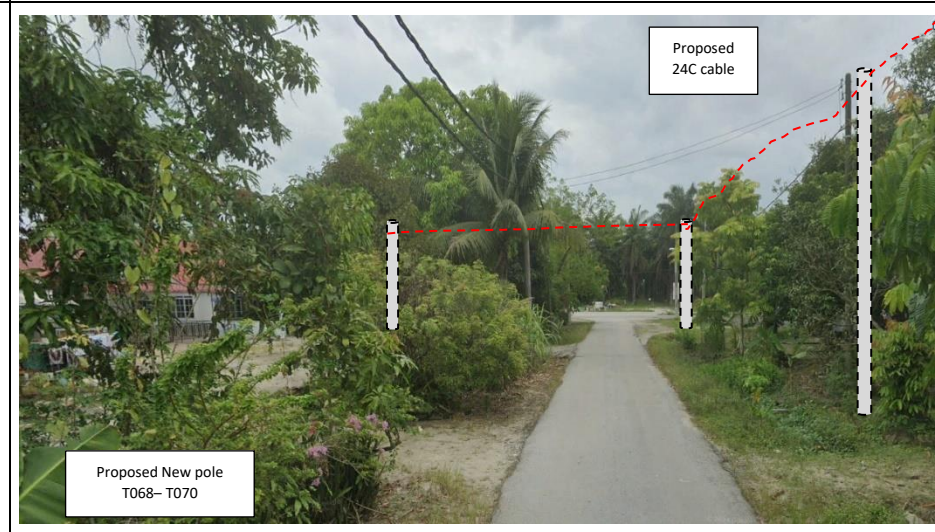
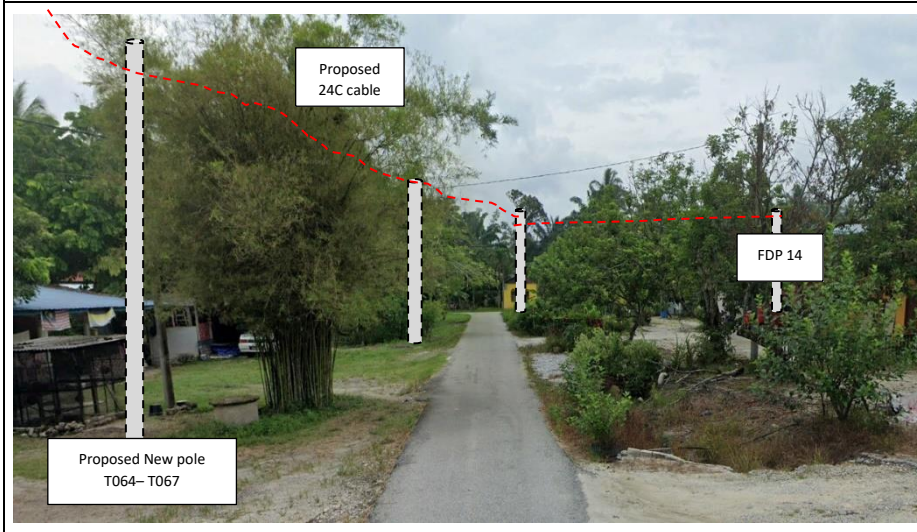
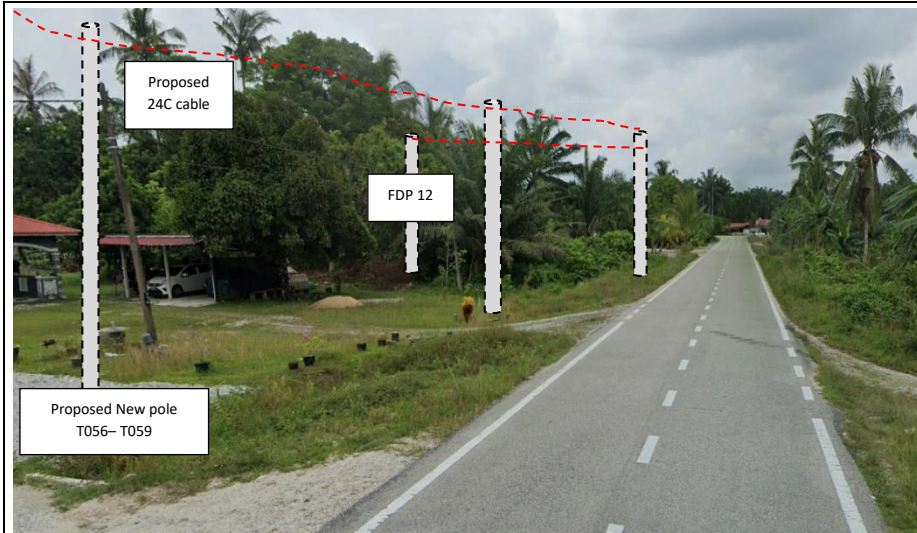


PROJEK PENYEDIAAN DAN PENYELENGGARAAN POINT OF PRESENCE (POP) FASA 2: HAB INFRASTRUKTUR GENTIAN OPTIK BERHAMPIRAN DENGAN SEKOLAH, KAWASAN PERINDUSTRIAN, PREMIS KERAJAAN DAN KOMUNITI SEKITARNYA OLEH KEMENTERIAN KOMUNIKASI MALAYSIA - ZON UTARA (KKMM.400-11/17/132(1))



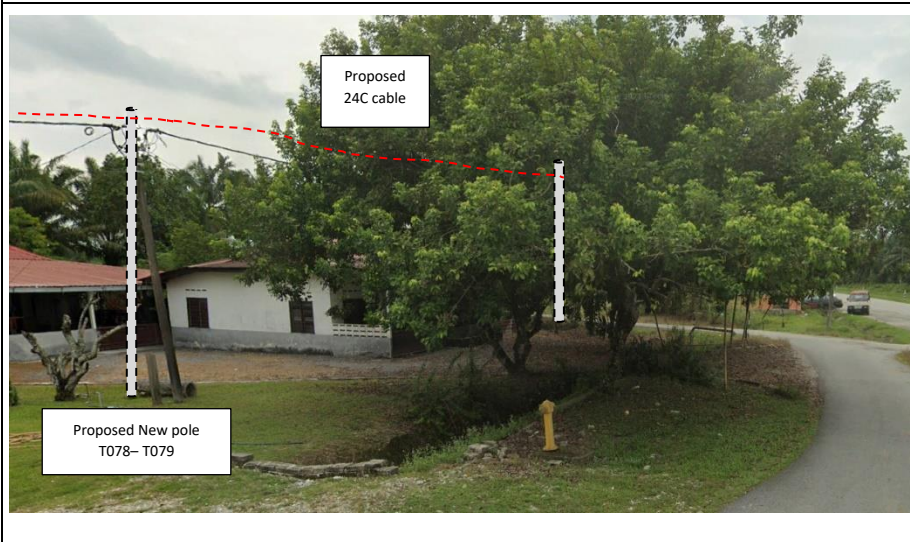


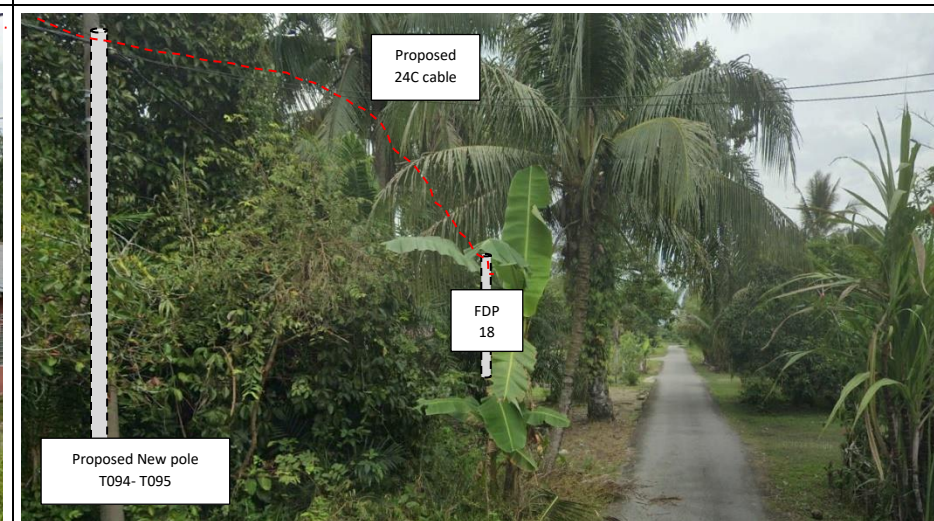
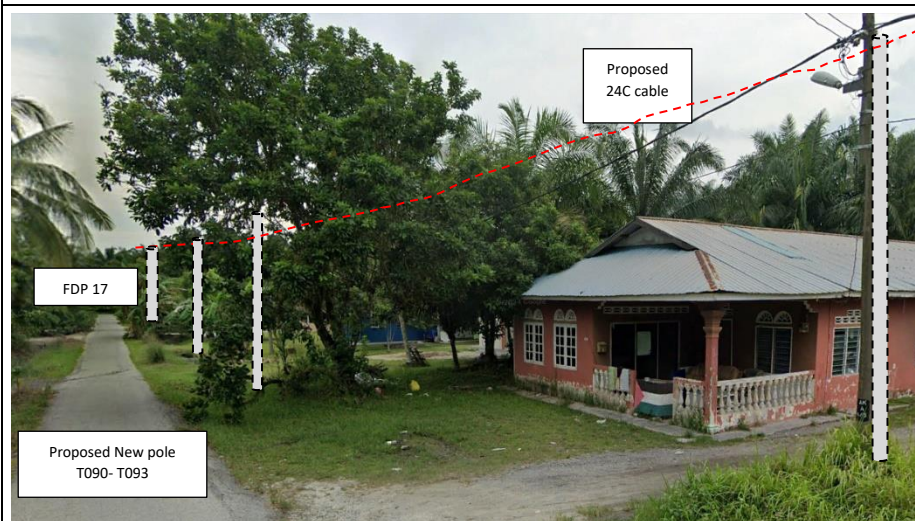
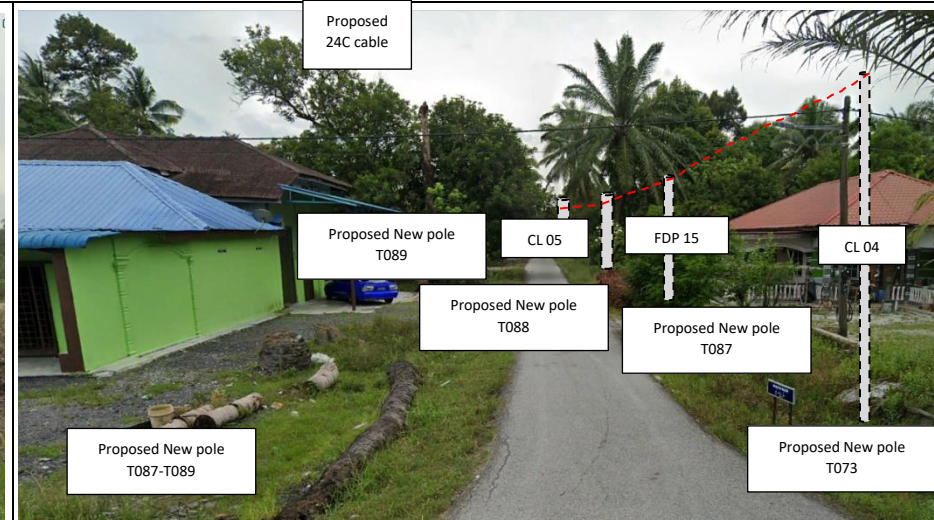
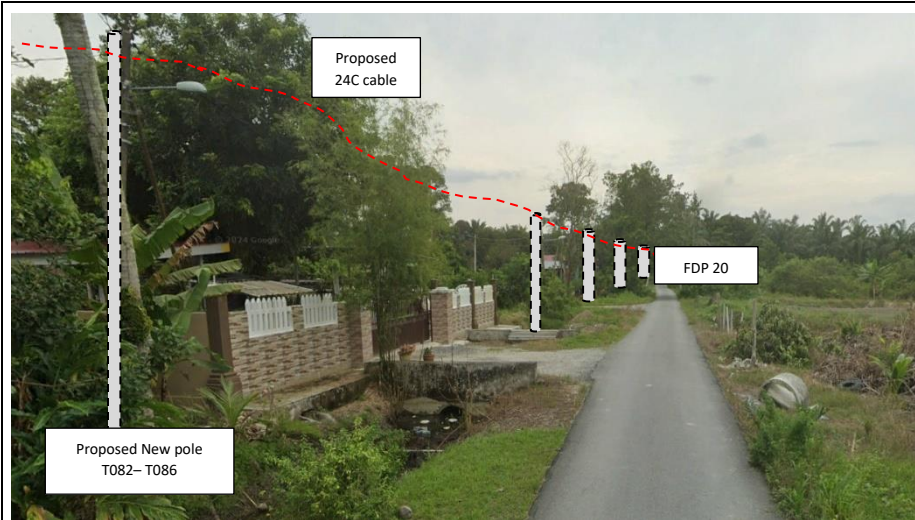
PROJEK PENYEDIAAN DAN PENYELENGGARAAN POINT OF PRESENCE (POP) FASA 2: HAB INFRASTRUKTUR GENTIAN OPTIK BERHAMPIRAN DENGAN SEKOLAH, KAWASAN PERINDUSTRIAN, PREMIS KERAJAAN DAN KOMUNITI SEKITARNYA OLEH KEMENTERIAN KOMUNIKASI MALAYSIA - ZON UTARA (KKMM.400-11/17/132(1))





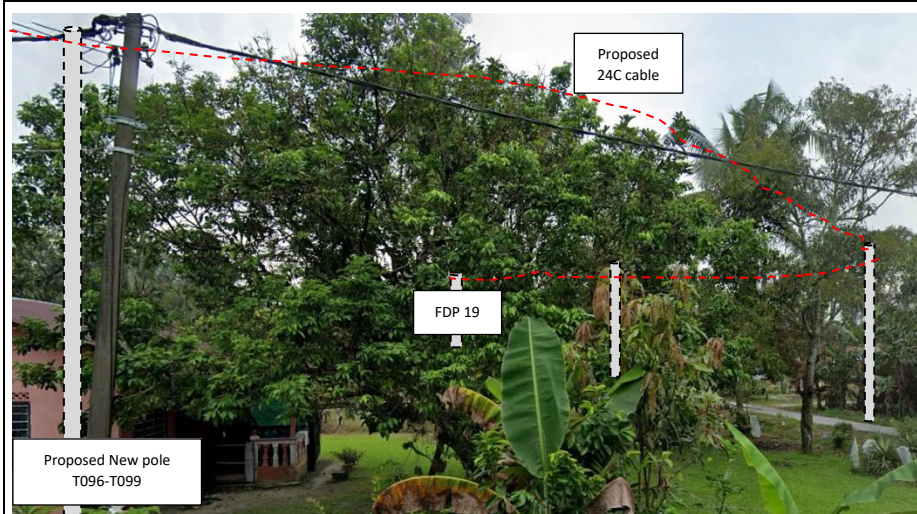
PROJEK PENYEDIAAN DAN PENYELENGGARAAN POINT OF PRESENCE (POP) FASA 2: HAB INFRASTRUKTUR GENTIAN OPTIK BERHAMPIRAN DENGAN SEKOLAH, KAWASAN PERINDUSTRIAN, PREMIS KERAJAAN DAN KOMUNITI SEKITARNYA OLEH KEMENTERIAN KOMUNIKASI MALAYSIA - ZON UTARA (KKMM.400-11/17/132(1))







PROJEK PENYEDIAAN DAN PENYELENGGARAAN POINT OF PRESENCE (POP) FASA 2: HAB INFRASTRUKTUR GENTIAN OPTIK BERHAMPIRAN DENGAN SEKOLAH, KAWASAN PERINDUSTRIAN, PREMIS KERAJAAN DAN KOMUNITI SEKITARNYA OLEH KEMENTERIAN KOMUNIKASI MALAYSIA - ZON UTARA (KKMM.400-11/17/132(1))





PROJEK PENYEDIAAN DAN PENYELENGGARAAN POINT OF PRESENCE (POP) FASA 2: HAB INFRASTRUKTUR GENTIAN OPTIK BERHAMPIRAN DENGAN SEKOLAH, KAWASAN PERINDUSTRIAN, PREMIS KERAJAAN DAN KOMUNITI SEKITARNYA OLEH KEMENTERIAN KOMUNIKASI MALAYSIA - ZON UTARA (KKMM.400-11/17/132(1))



### 3rd Parties Dependencies

No.	Local Council/ Authority	Remark
1	Majlis Perbandaran Perak Tengah	
2		
3		
4		
5		
6		



LEGEND	NOS.	NOS.	NOS.	NOS.	NOS.	NOS.	NOS.	NOS.	NOS.
12C FOC	30	Installed Pole (9m)	30	Suspension	MS30	New Manhole (PIT)	Micro-Trenching (Meter)	MH1	MH NO.
24C FOC	70	Installed Pole (7.5M)	70	Tension	MS7	New Manhole(JRC7)	Temporary Infra (Meter)	TKS-1	Existing TNB Pole NO.
48C FOC	1	Installed Pole (6.7M)		Pole Ring		FDP Boundary	Loop / Coil (Meter)	P001	New Pole NO.
96C FOC	6	FDC		FDP with (1:8) splitter	20	HDD (Meter)	#	CL01	Closure NO.
144C FOC		Closure		Existing Manhole		Open Cut (Meter)	CO1	DP1	FDP NO.
		Existing Closure							

ACTUAL HOMEPASS :

KEY PLAN :  
  
POP2 PROJECT IN PERAK

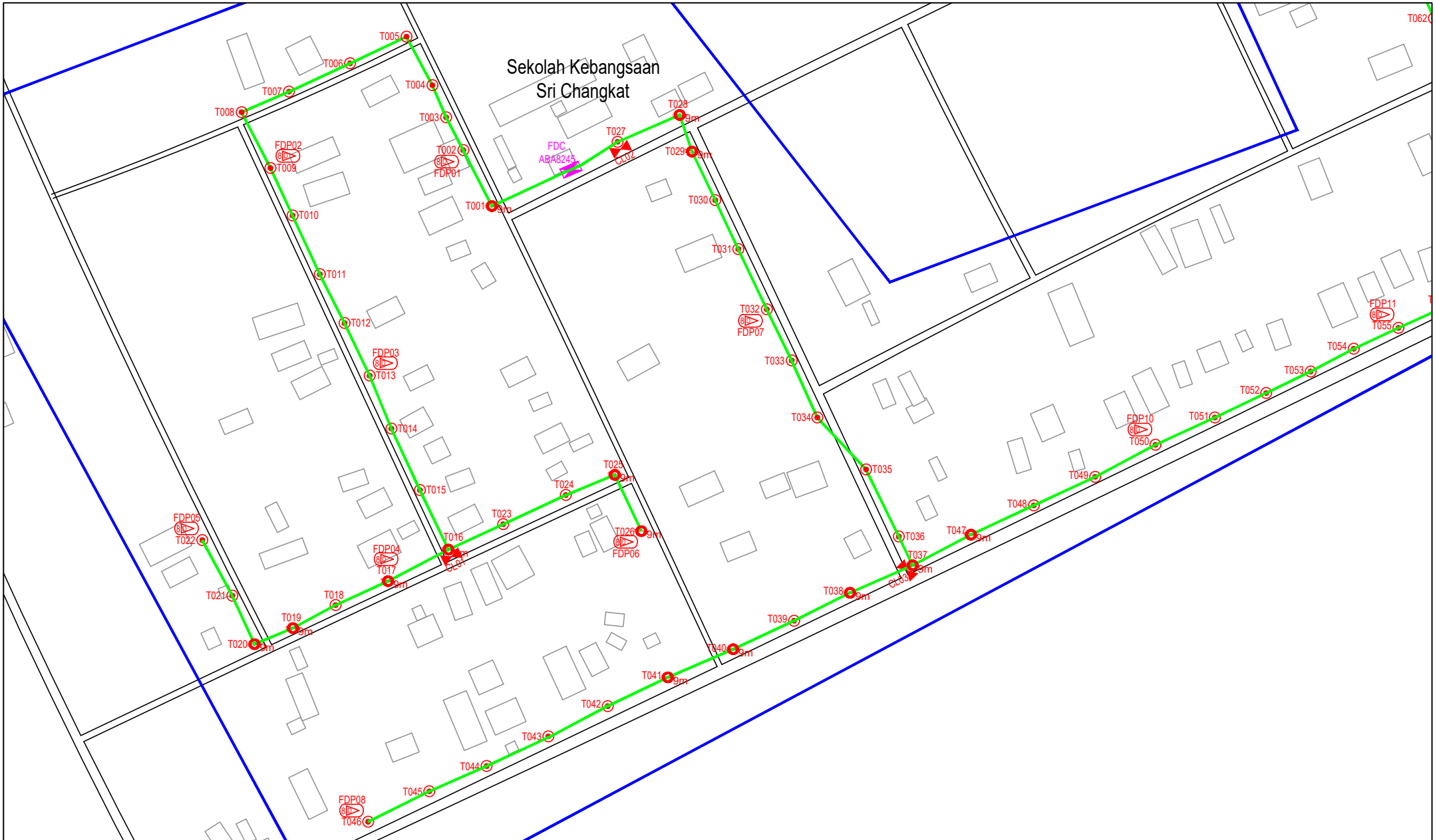
OWNER/DEVELOPOR :



MAIN CONTRACTOR :  
  
CONTRACTOR FOR SURVEY, TECHNICAL PROPOSAL AND WAYLEAVE, & PERMIT APPROVAL - POP2 PROJECT

PROJECT TITLE :  
  
DRAWING TITLE:  
AS-BUILT SITE PLAN DRAWING  
ABA8245  
SEKOLAH KEBANGSAAN  
SRI CHANGKAT

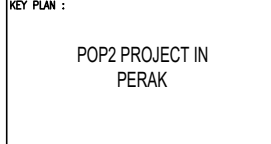
Design By : ENGINEER	Date : JAN 2025
Drawn By : CAD ENGINEER	Scale : NOT TO SCALE
Checked By : ENGINEER	Job Number : 1
DRAWING NUMBER : ABA8245-ABD-01	Sheet : 1/4
THIS PRINT AND ITS COPYRIGHT ARE THE PROPERTY OF APEX COMMUNICATIONS SDN BHD	
PROJECT PHASE: POP 2	Size : A3



LEGEND	NOS.	NOS.	NOS.	NOS.	NOS.	NOS.	NOS.	NOS.	NOS.
12C FOC	30	Installed Pole (9m)	30	Suspension	1B30	New Manhole (PIT)	Micro-Trenching (Meter)	MH1	MH NO.
24C FOC	2935	Installed Pole (7.5M)	70	Tension	CB7	New Manhole(JRC7)	Temporary Infra (Meter)	TKS-1	Existing TNB Pole NO.
48C FOC	2935	Installed Pole (6.7M)		Pole Ring		FDP Boundary	Loop / Coil (Meter)	P001	New Pole NO.
96C FOC		Closure	6	FDP with (1:8) splitter	20	HDD (Meter)	#	CL01	Closure NO.
144C FOC		Existing Closure		Existing Manhole		Open Cut (Meter)	001	DP1	FDP NO.

ACTUAL HOMEPASS :

KEY PLAN :  
  
POP2 PROJECT IN PERAK



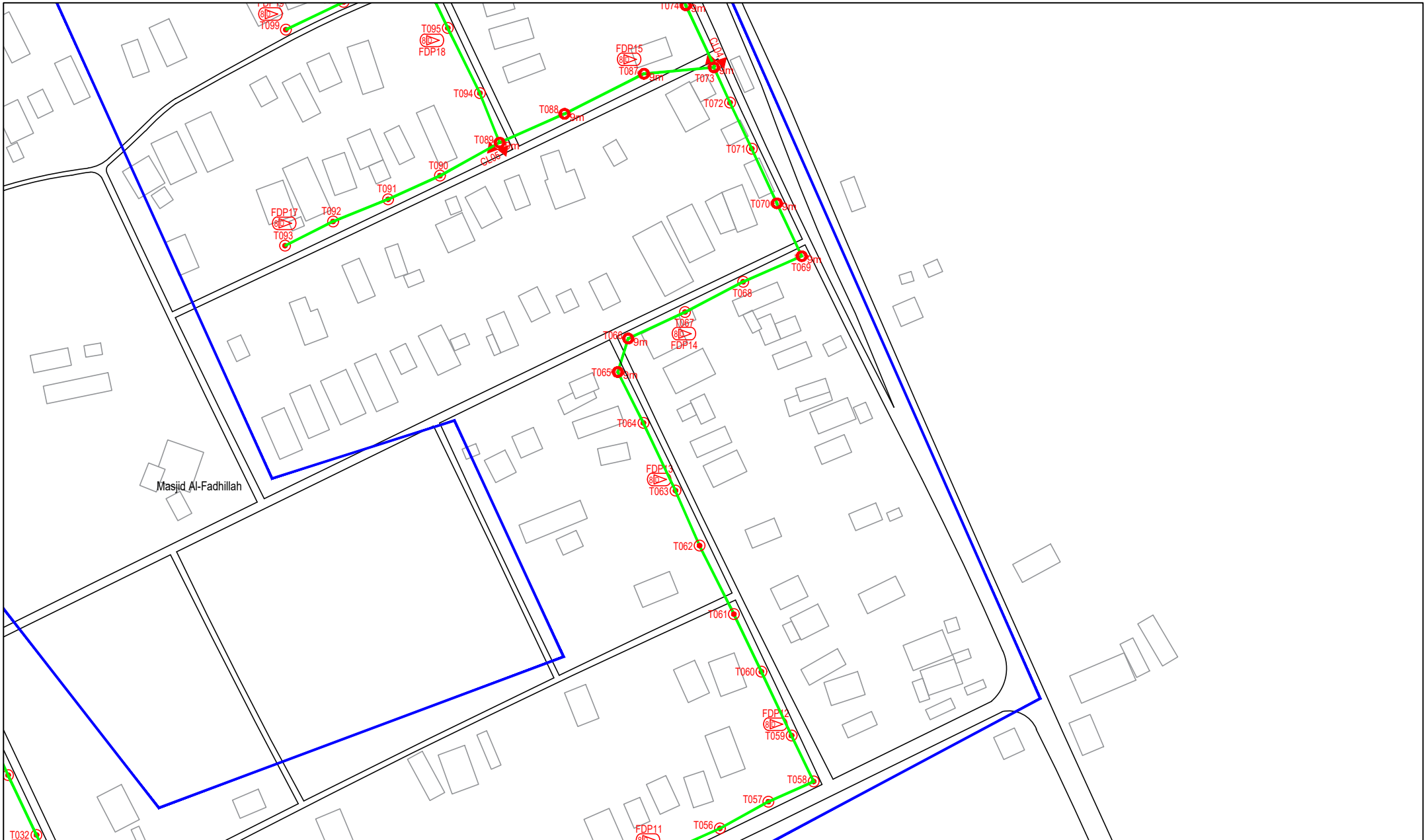
OWNER/DEVELOPER :  
  
MAIN CONTRACTOR :

PROJECT TITLE :  
  
CONTRACTOR FOR SURVEY, TECHNICAL PROPOSAL AND WAYLEAVE, & PERMIT APPROVAL - POP2 PROJECT

DRAWING TITLE:  
AS-BUILT SITE PLAN DRAWING  
ABA8245  
SEKOLAH KEBANGSAAN  
SRI CHANGKAT

PROJECT PHASE:  
POP 2

Design By : ENGINEER	Date : JAN 2025
Drawn By : CAD ENGINEER	Scale : NOT TO SCALE
Checked By : ENGINEER	Job Number : 1
DRAWING NUMBER : ABA8245-ABD-01A	Sheet : 2/4
THIS PRINT AND ITS COPYRIGHT ARE THE PROPERTY OF APEX COMMUNICATIONS SDN BHD	
Size : A3	



LEGEND	NOS.	NOS.	NOS.	NOS.	NOS.	NOS.	NOS.	NOS.	NOS.	
12C FOC	30	Installed Pole (9m)	30	Suspension	1830	New Manhole (PIT)	1	Micro-Trenching (Meter)	MH1	MH NO.
24C FOC	2935	Installed Pole (7.5M)	70	Tension	67	New Manhole(JRC7)	1	Temporary Infra (Meter)	TKS-1	Existing TNB Pole NO.
48C FOC	1	Installed Pole (6.7M)	1	Pole Ring	1	FDP Boundary	1	Loop / Coil (Meter)	P001	New Pole NO.
96C FOC	6	Closure	6	FDP with (1:8) splitter	20	Existing Manhole	1	Active Outdoor Cabinet	CL01	Closure NO.
144C FOC	1	Existing Closure	1	Existing Manhole	1	Installed Riser	1	Open Cut (Meter)	DP1	FDP NO.

ACTUAL HOMEPASS :

KEY PLAN :  
POP2 PROJECT IN PERAK

OWNER/DEVELOPER :



MAIN CONTRACTOR :  
CONTRACTOR FOR SURVEY, TECHNICAL PROPOSAL AND WAYLEAVE, & PERMIT APPROVAL - POP2 PROJECT

PROJECT TITLE :  
DRAWING TITLE:  
AS-BUILT SITE PLAN DRAWING  
ABAB245  
SEKOLAH KEBANGSAAN  
SRI CHANGKAT

Design By : ENGINEER	Date : JAN 2025
Drawn By : CAD ENGINEER	Scale : NOT TO SCALE
Checked By : ENGINEER	Job Number : 1
DRAWING NUMBER : ABAB245-ABD-01B	Sheet : 3/4
THIS PRINT AND ITS COPYRIGHT ARE THE PROPERTY OF APEX COMMUNICATIONS SDN BHD	
PROJECT PHASE: POP 2	Size : A3

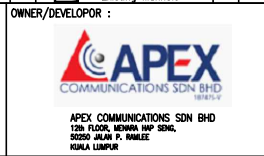


LEGEND	NOS.	NOS.	NOS.	NOS.	NOS.	NOS.	NOS.	NOS.	NOS.
12C FOC		Installed 1:4 / 1:8 / 1:32 splitter		Installed Pole (9m)	30	Suspension		New Manhole (PIT)	
24C FOC	2935	Installed Patch Cord		Installed Pole (7.5M)	70	Tension		New Manhole(JRC7)	
48C FOC		FDC	1	Installed Pole (6.7M)		Pole Ring		FDP Boundary	
96C FOC		Closure	6	Existing TNB Pole		FDP with (1:8) splitter	20	HDD (Meter)	
144C FOC		Existing Closure		Installed Riser		Existing Manhole		Open Cut (Meter)	
								Micro-Trenching (Meter)	MH1 MH NO.
								Temporary Infra (Meter)	TKS-1 Existing TNB Pole NO.
								Loop / Coil (Meter)	P001 New Pole NO.
								# Active Outdoor Cabinet	CL01 Closure NO.
								FDC NO.	DP1 FDP NO.

ACTUAL HOMEPASS :

KEY PLAN :  
  
POP2 PROJECT IN PERAK

OWNER/DEVELOPER :



MAIN CONTRACTOR :  
  
CONTRACTOR FOR SURVEY, TECHNICAL PROPOSAL AND WAYLEAVE, & PERMIT APPROVAL - POP2 PROJECT

DRAWING TITLE:  
AS-BUILT SITE PLAN DRAWING  
ABA8245  
SEKOLAH KEBANGSAAN  
SRI CHANGKAT  
  
PROJECT PHASE:  
POP 2

Design By : ENGINEER	Date : JAN 2025
Drawn By : CAD ENGINEER	Scale : NOT TO SCALE
Checked By : ENGINEER	Job Number : 1
DRAWING NUMBER : ABA8245-ABD-01C	Sheet : 4/4
THIS PRINT AND ITS COPYRIGHT ARE THE PROPERTY OF APEX COMMUNICATIONS SDN BHD	
Size : A3	