

TECHNICAL PROPOSAL

POP2 ABAB029 SEKOLAH KEBANGSAAN SUNGAI HAJI MUHAMMAD (D-SIDE)

Company Name : T&H PANJI EMPIRE SDN BHD
Company Address : 39A Jalan Jelapang 5, Pusat Komersial Jelapang, 30020 Ipoh, Perak Darul Ridzuan.
Prepared By : Mat Salleh Bin Mat Zain
Date : 23/12/2024



Starting Point

Site / Boundary Name : BAGAN DATUK
Address : SK SUNGAI HAJI MUHAMMAD
District : SELEKOH
Postcode : 36200
State : Perak
GPS Coordinate : 3.890691, 100.773658
LRD : A

End Point

Site / Boundary Name : BAGAN DATUK
Address : TAMAN SELEKOH AMAN
District : SELEKOH
Postcode : 36200
State : Perak
GPS Coordinate : 3.907973, 100.782726
LRD : B



PROJEK PENYEDIAAN DAN PENYELENGGARAAN POINT OF PRESENT (POP) FASA 2: HAB INFRASTRUKTUR GENTIAN OPTIK BERHAMPIRAN DENGAN SEKOLAH, KAWASAN PERINDUSTRIAN, PREMIS KERAJAAN DAN KOMUNITI SEKITARNYA OLEH KEMENTERIAN KOMUNIKASI MALAYSIA - ZON UTARA (KKMM.400-11/17/132(1))



1.0 WORK SUMMARY

NO	PROPOSED DISTANCE AND METHOD	UNIT	QUANTITY
1	Horizontal Directional Drilling (HDD)	m	60
2	Carriage Way Open Trench (CW)	m	0
3	Grass Verge Open Trenching (GV)	m	0
4	Micro Trenching (MT)	m	0
Total			60

NO	OTHER INFORMATION	UNIT	QUANTITY
1	Installation of Short Span ADSS Fiber Cables	m	6000
2	Install New Pole	ea	140
3	Install New JRC7 Manhole	ea	2
4	Install GI Riser 100mm	ea	2
5	Install Fiber Distribution Point	ea	15
6	Closure (Splicing, Termination and Testing)	ea	3



PROJEK PENYEDIAAN DAN PENYELENGGARAAN POINT OF PRESENT (POP) FASA 2: HAB INFRASTUKTUR GENTIAN OPTIK BERHAMPIRAN DENGAN SEKOLAH, KAWASAN PERINDUSTRIAN, PREMIS KERAJAAN DAN KOMUNITI SEKITARNYA OLEH KEMENTERIAN KOMUNIKASI MALAYSIA - ZON UTARA (KKMM.400-11/17/132(1))



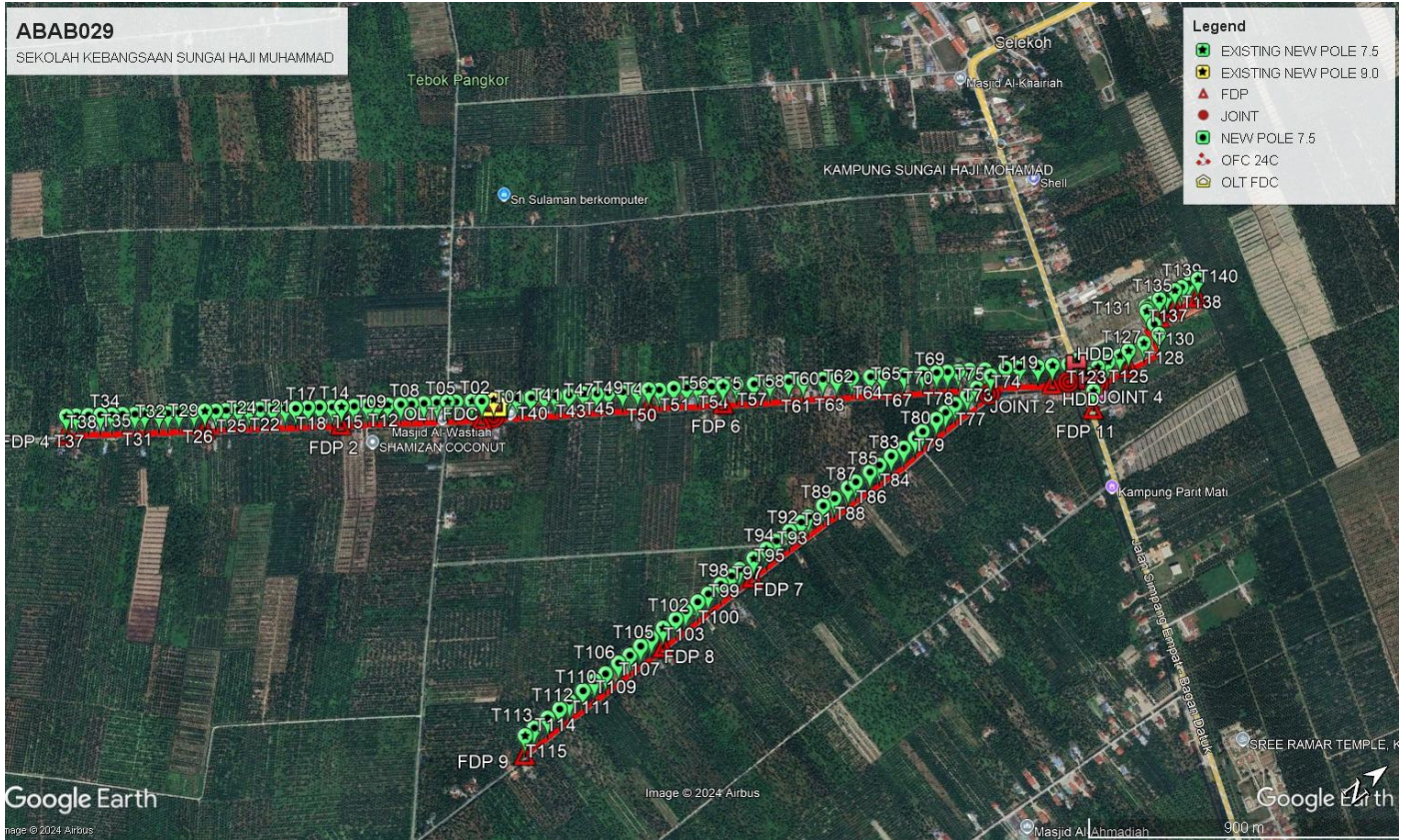
2.0 LOCAL AUTHORITY SUMMARY

Majlis Perbandaran Teluk Intan & JKR Teluk Intan

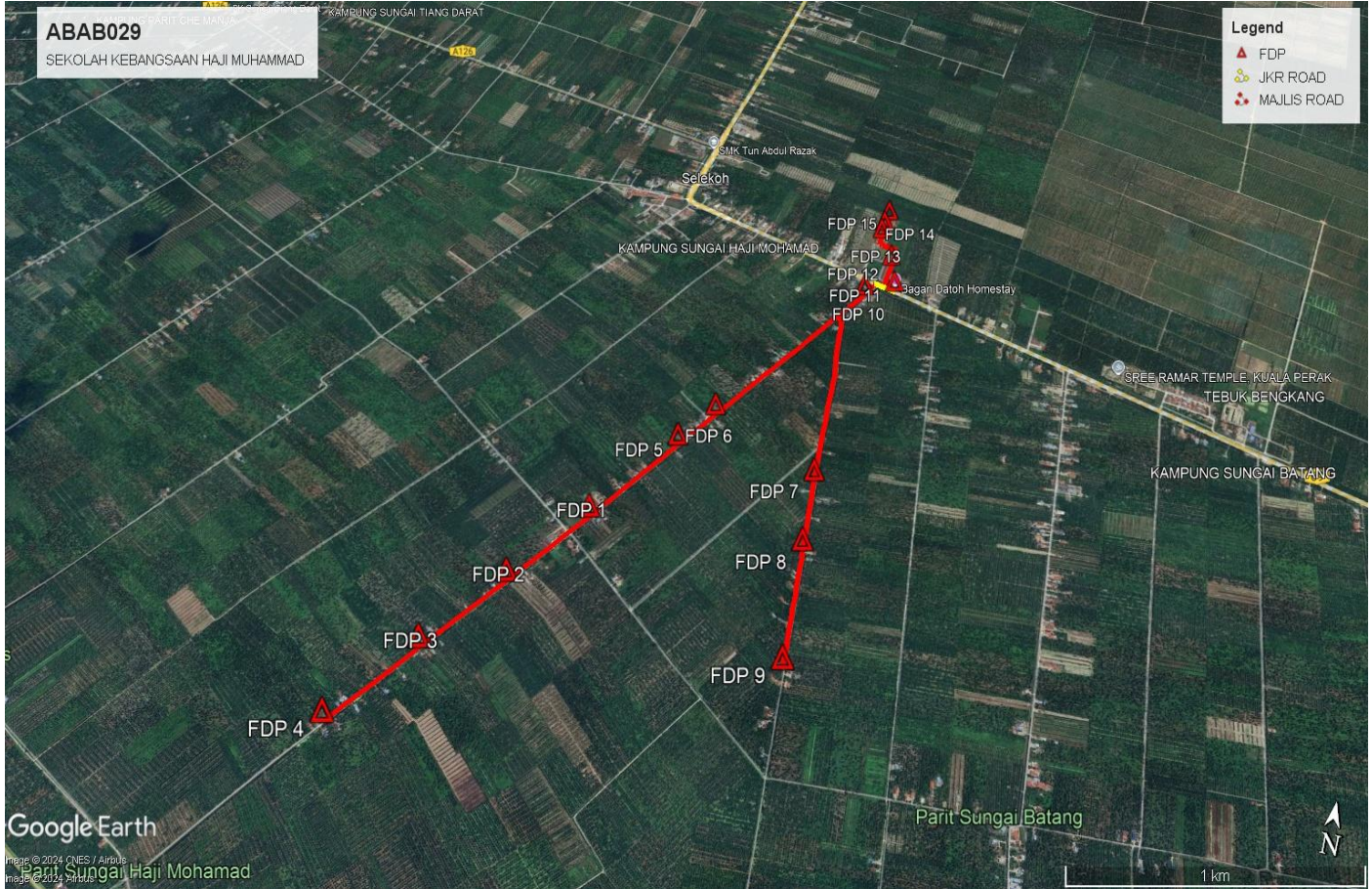
NO	ITEMS	Owner	Quantity	Distance (m)
1	HDD	JKR	1	60
		Majlis	-	-
		Estate / Private Land	-	-
2	New Pole	JKR	3	140
		Majlis	137	5800
		Estate / Private Land	-	-
Total Distance (m)				6000M

3.0 SITE PLAN (KMZ)

3.1 Overview Site Area



3.3 Site Plan - KMZ Routing (All Local Authority)



Red Colour - Majlis Road
Yellow Colour - JKR Road



PROJEK PENYEDIAAN DAN PENYELENGGARAAN POINT OF PRESENT (POP) FASA 2: HAB INFRASTUKTUR GENTIAN OPTIK BERHAMPIRAN DENGAN SEKOLAH, KAWASAN PERINDUSTRIAN, PREMIS KERAJAAN DAN KOMUNITI SEKITARNYA OLEH KEMENTERIAN KOMUNIKASI MALAYSIA - ZON UTARA (KKMM.400-11/17/132(1))



4.0 PROPOSED NEW MANHOLE

Proposed New Manhole Coordinate					
No.	Manhole Number	Distance (m)	Latitude	Longitude	Local Authority
1	MH01	60	3.903914	100.782441	JKR TELUK INTAN
2	MH02	-	3.903919	100.782938	JKR TELUK INTAN

5.0 PROPOSED NEW POLE

Proposed New Pole Coordinate					
No.	Pole Number	Distance (m)	Latitude	Longitude	Local Authority
1	T001 (OLT&FDC)	36	3.890691	100.773658	MAJLIS PERBANDARAN TELUK INTAN
2	T002 (FDP 1)	30	3.890414	100.773499	MAJLIS PERBANDARAN TELUK INTAN
3	T003	48	3.889844	100.773094	MAJLIS PERBANDARAN TELUK INTAN
4	T004	26	3.889844	100.773094	MAJLIS PERBANDARAN TELUK INTAN
5	T005	32	3.889660	100.772955	MAJLIS PERBANDARAN TELUK INTAN
6	T006	39	3.889418	100.772792	MAJLIS PERBANDARAN TELUK INTAN
7	T007	38	3.889129	100.772603	MAJLIS PERBANDARAN TELUK INTAN
8	T008	33	3.888850	100.772419	MAJLIS PERBANDARAN TELUK INTAN
9	T009	38	3.888615	100.772246	MAJLIS PERBANDARAN TELUK INTAN
10	T010	32	3.888331	100.772042	MAJLIS PERBANDARAN TELUK INTAN
11	T011	29	3.888100	100.771868	MAJLIS PERBANDARAN TELUK INTAN
12	T012	40	3.887888	100.771720	MAJLIS PERBANDARAN TELUK INTAN
13	T013	38	3.887583	100.771514	MAJLIS PERBANDARAN TELUK INTAN
14	T014 (FDP 2)	27	3.887307	100.771316	MAJLIS PERBANDARAN TELUK INTAN
15	T015	37	3.887105	100.771176	MAJLIS PERBANDARAN TELUK INTAN
16	T016	35	3.886828	100.770968	MAJLIS PERBANDARAN TELUK INTAN
17	T017	38	3.886574	100.770787	MAJLIS PERBANDARAN TELUK INTAN
18	T018	32	3.886294	100.770604	MAJLIS PERBANDARAN TELUK INTAN
19	T019	38	3.886073	100.770426	MAJLIS PERBANDARAN TELUK INTAN
20	T020	37	3.885797	100.770239	MAJLIS PERBANDARAN TELUK INTAN
21	T021	36	3.885530	100.770031	MAJLIS PERBANDARAN TELUK INTAN
22	T022	32	3.885282	100.769862	MAJLIS PERBANDARAN TELUK INTAN
23	T023	39	3.885053	100.769695	MAJLIS PERBANDARAN TELUK INTAN
24	T024	32	3.884775	100.769502	MAJLIS PERBANDARAN TELUK INTAN
25	T025	33	3.884544	100.769347	MAJLIS PERBANDARAN TELUK INTAN
26	T026 (FDP 3)	32	3.884323	100.769160	MAJLIS PERBANDARAN TELUK INTAN
27	T027	45	3.884064	100.769005	MAJLIS PERBANDARAN TELUK INTAN
28	T028	33	3.883731	100.768770	MAJLIS PERBANDARAN TELUK INTAN
29	T029	27	3.883480	100.768610	MAJLIS PERBANDARAN TELUK INTAN
30	T030	42	3.883290	100.768468	MAJLIS PERBANDARAN TELUK INTAN
31	T031	29	3.882973	100.768238	MAJLIS PERBANDARAN TELUK INTAN
32	T032	38	3.882756	100.768087	MAJLIS PERBANDARAN TELUK INTAN

Proposed New Pole Coordinate

No.	Pole Number	Distance (m)	Latitude	Longitude	Local Authority
33	T033	33	3.882490	100.767886	MAJLIS PERBANDARAN TELUK INTAN
34	T034	36	3.882256	100.767722	MAJLIS PERBANDARAN TELUK INTAN
35	T035	39	3.882009	100.767533	MAJLIS PERBANDARAN TELUK INTAN
36	T036	37	3.881742	100.767343	MAJLIS PERBANDARAN TELUK INTAN
37	T037	32	3.881477	100.767159	MAJLIS PERBANDARAN TELUK INTAN
38	T038 (FDP 4)	41	3.890992	100.773867	MAJLIS PERBANDARAN TELUK INTAN
39	T039	29	3.890992	100.773867	MAJLIS PERBANDARAN TELUK INTAN
40	T040	42	3.891208	100.774027	MAJLIS PERBANDARAN TELUK INTAN
41	T041	40	3.891525	100.774247	MAJLIS PERBANDARAN TELUK INTAN
42	T042	32	3.891832	100.774440	MAJLIS PERBANDARAN TELUK INTAN
43	T043	41	3.892067	100.774607	MAJLIS PERBANDARAN TELUK INTAN
44	T044	44	3.892380	100.774816	MAJLIS PERBANDARAN TELUK INTAN
45	T045	38	3.892723	100.775028	MAJLIS PERBANDARAN TELUK INTAN
46	T046	37	3.893000	100.775238	MAJLIS PERBANDARAN TELUK INTAN
47	T047	44	3.893266	100.775412	MAJLIS PERBANDARAN TELUK INTAN
48	T048	46	3.893586	100.775632	MAJLIS PERBANDARAN TELUK INTAN
49	T049	33	3.893931	100.775848	MAJLIS PERBANDARAN TELUK INTAN
50	T050 (FDP 5)	31	3.894185	100.776006	MAJLIS PERBANDARAN TELUK INTAN
51	T051	44	3.894405	100.776188	MAJLIS PERBANDARAN TELUK INTAN
52	T052	38	3.894746	100.776389	MAJLIS PERBANDARAN TELUK INTAN
53	T053	33	3.895026	100.776595	MAJLIS PERBANDARAN TELUK INTAN
54	T054	40	3.895278	100.776768	MAJLIS PERBANDARAN TELUK INTAN
55	T055	34	3.895586	100.776975	MAJLIS PERBANDARAN TELUK INTAN
56	T056 (FDP 6)	41	3.895862	100.777148	MAJLIS PERBANDARAN TELUK INTAN
57	T057	50	3.896157	100.777347	MAJLIS PERBANDARAN TELUK INTAN
58	T058	46	3.896540	100.777347	MAJLIS PERBANDARAN TELUK INTAN
59	T059	51	3.896906	100.777858	MAJLIS PERBANDARAN TELUK INTAN
60	T060	43	3.897331	100.778137	MAJLIS PERBANDARAN TELUK INTAN
61	T061	52	3.897657	100.778362	MAJLIS PERBANDARAN TELUK INTAN
62	T062	42	3.898109	100.778650	MAJLIS PERBANDARAN TELUK INTAN
63	T063	44	3.898402	100.778882	MAJLIS PERBANDARAN TELUK INTAN
64	T064	55	3.898762	100.779104	MAJLIS PERBANDARAN TELUK INTAN
65	T065	37	3.899174	100.779385	MAJLIS PERBANDARAN TELUK INTAN
66	T066	60	3.899446	100.779580	MAJLIS PERBANDARAN TELUK INTAN
67	T067	55	3.899931	100.779903	MAJLIS PERBANDARAN TELUK INTAN
68	T068	42	3.900353	100.780179	MAJLIS PERBANDARAN TELUK INTAN
69	T069	32	3.900666	100.780391	MAJLIS PERBANDARAN TELUK INTAN
70	T070	32	3.900915	100.780556	MAJLIS PERBANDARAN TELUK INTAN
71	T071	33	3.901158	100.780720	MAJLIS PERBANDARAN TELUK INTAN
72	T072	46	3.901419	100.780879	MAJLIS PERBANDARAN TELUK INTAN
73	T073	27	3.901759	100.781126	MAJLIS PERBANDARAN TELUK INTAN
74	T074 (JOINT)	55	3.901776	100.781352	MAJLIS PERBANDARAN TELUK INTAN
75	T075	36	3.901266	100.781381	MAJLIS PERBANDARAN TELUK INTAN
76	T076	44	3.900930	100.781380	MAJLIS PERBANDARAN TELUK INTAN
77	T077	39	3.900520	100.781375	MAJLIS PERBANDARAN TELUK INTAN

Proposed New Pole Coordinate

No.	Pole Number	Distance (m)	Latitude	Longitude	Local Authority
78	T078	34	3.900175	100.781390	MAJLIS PERBANDARAN TELUK INTAN
79	T079	56	3.899862	100.781385	MAJLIS PERBANDARAN TELUK INTAN
80	T080	32	3.899357	100.781417	MAJLIS PERBANDARAN TELUK INTAN
81	T081	47	3.899084	100.781435	MAJLIS PERBANDARAN TELUK INTAN
82	T082	45	3.898672	100.781459	MAJLIS PERBANDARAN TELUK INTAN
83	T083	44	3.898272	100.781418	MAJLIS PERBANDARAN TELUK INTAN
84	T084	35	3.897864	100.781420	MAJLIS PERBANDARAN TELUK INTAN
85	T085	52	3.897546	100.781412	MAJLIS PERBANDARAN TELUK INTAN
86	T086	30	3.897082	100.781389	MAJLIS PERBANDARAN TELUK INTAN
87	T087	54	3.896820	100.781385	MAJLIS PERBANDARAN TELUK INTAN
88	T088	42	3.896352	100.781388	MAJLIS PERBANDARAN TELUK INTAN
89	T089	55	3.895994	100.781359	MAJLIS PERBANDARAN TELUK INTAN
90	T090	27	3.895502	100.781351	MAJLIS PERBANDARAN TELUK INTAN
91	T091	43	3.895256	100.781349	MAJLIS PERBANDARAN TELUK INTAN
92	T092	51	3.894865	100.781344	MAJLIS PERBANDARAN TELUK INTAN
93	T093	40	3.894424	100.781341	MAJLIS PERBANDARAN TELUK INTAN
94	T094	45	3.894077	100.781348	MAJLIS PERBANDARAN TELUK INTAN
95	T095 (FDP 7)	53	3.893659	100.781339	MAJLIS PERBANDARAN TELUK INTAN
96	T096	31	3.893187	100.781336	MAJLIS PERBANDARAN TELUK INTAN
97	T097	41	3.892912	100.781348	MAJLIS PERBANDARAN TELUK INTAN
98	T098	46	3.892548	100.781343	MAJLIS PERBANDARAN TELUK INTAN
99	T099	40	3.892132	100.781344	MAJLIS PERBANDARAN TELUK INTAN
100	T100	44	3.891784	100.781339	MAJLIS PERBANDARAN TELUK INTAN
101	T101	37	3.891388	100.781336	MAJLIS PERBANDARAN TELUK INTAN
102	T102	46	3.891050	100.781346	MAJLIS PERBANDARAN TELUK INTAN
103	T103 (FDP 8)	44	3.890655	100.781342	MAJLIS PERBANDARAN TELUK INTAN
104	T104	38	3.890245	100.781348	MAJLIS PERBANDARAN TELUK INTAN
105	T105	42	3.889892	100.781343	MAJLIS PERBANDARAN TELUK INTAN
106	T106	40	3.889523	100.781360	MAJLIS PERBANDARAN TELUK INTAN
107	T107	49	3.889168	100.781337	MAJLIS PERBANDARAN TELUK INTAN
108	T108	37	3.888729	100.781354	MAJLIS PERBANDARAN TELUK INTAN
109	T109	46	3.888391	100.781325	MAJLIS PERBANDARAN TELUK INTAN
110	T110	49	3.887995	100.781345	MAJLIS PERBANDARAN TELUK INTAN
111	T111	36	3.887554	100.781341	MAJLIS PERBANDARAN TELUK INTAN
112	T112	44	3.887229	100.781349	MAJLIS PERBANDARAN TELUK INTAN
113	T113	46	3.886838	100.781344	MAJLIS PERBANDARAN TELUK INTAN
114	T114	33	3.886414	100.781333	MAJLIS PERBANDARAN TELUK INTAN
115	T115 (FDP 9)	65	3.886103	100.781341	MAJLIS PERBANDARAN TELUK INTAN
116	T116	42	3.902233	100.781437	MAJLIS PERBANDARAN TELUK INTAN
117	T117	56	3.902545	100.781648	MAJLIS PERBANDARAN TELUK INTAN
118	T118	43	3.902956	100.781942	MAJLIS PERBANDARAN TELUK INTAN
119	T119	51	3.903294	100.782149	MAJLIS PERBANDARAN TELUK INTAN
120	T120	28	3.903668	100.782391	MAJLIS PERBANDARAN TELUK INTAN
121	T121 (HDD)	60	3.903902	100.782443	JKR TELUK INTAN
122	T122 (HDD)	54	3.903919	100.782938	JKR TELUK INTAN



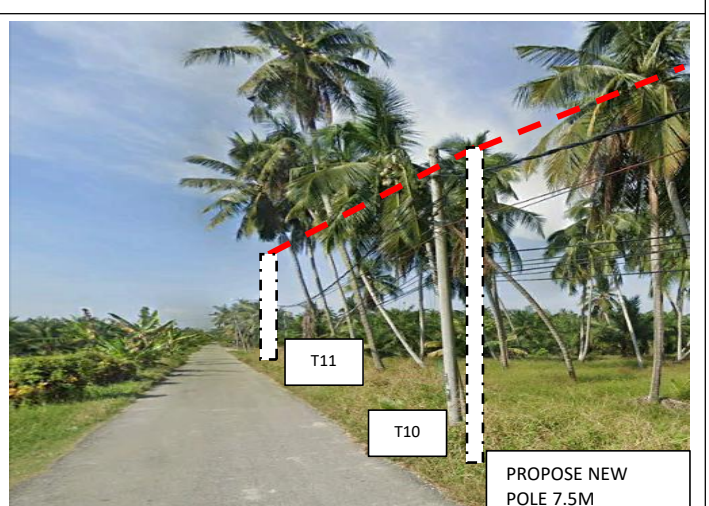
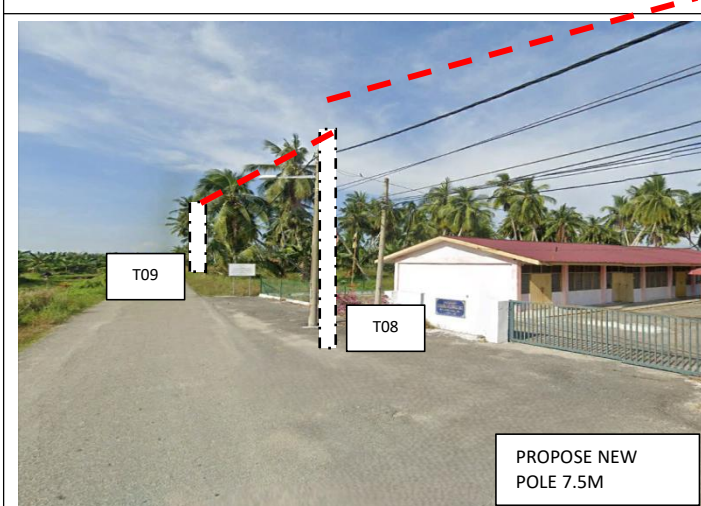
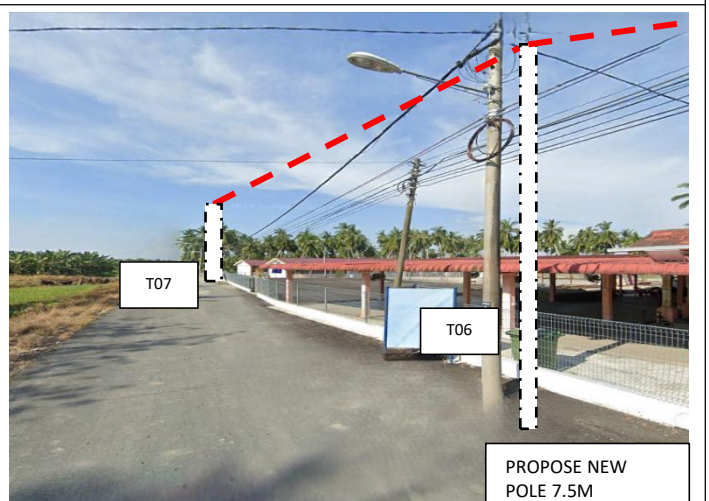
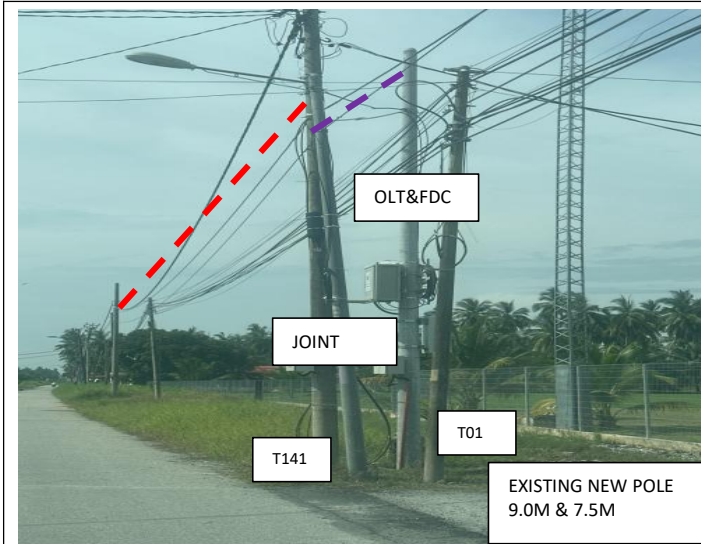
PROJEK PENYEDIAAN DAN PENYELENGGARAAN POINT OF PRESENT (POP) FASA 2: HAB INFRASTRUKTUR GENTIAN OPTIK BERHAMPIRAN DENGAN SEKOLAH, KAWASAN PERINDUSTRIAN, PREMIS KERAJAAN DAN KOMUNITI SEKITARNYA OLEH KEMENTERIAN KOMUNIKASI MALAYSIA - ZON UTARA (KKMM.400-11/17/132(1))

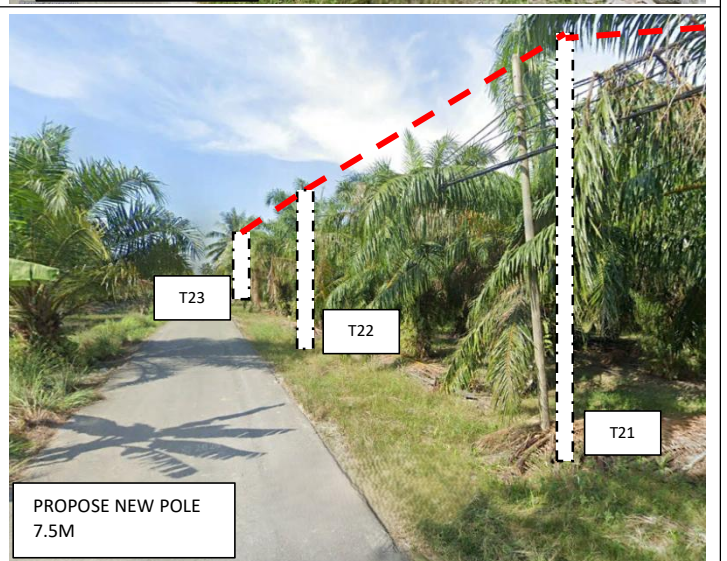
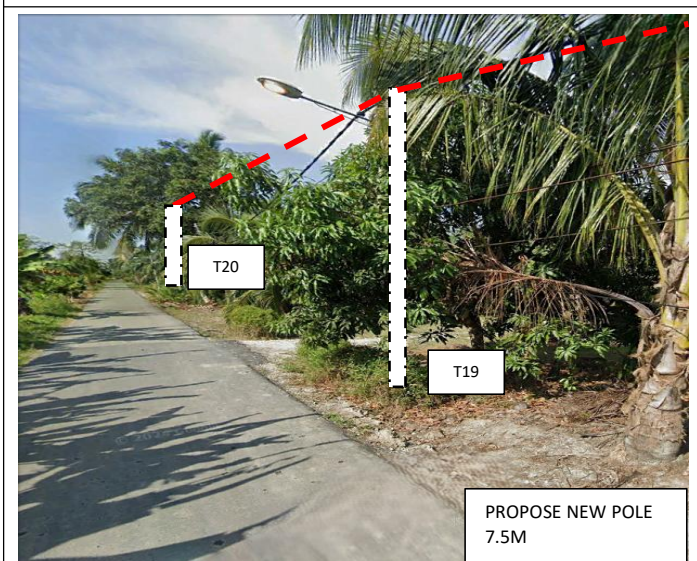
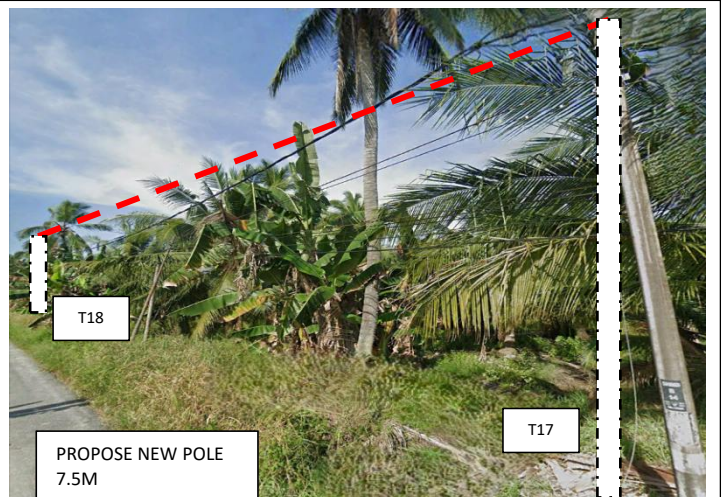
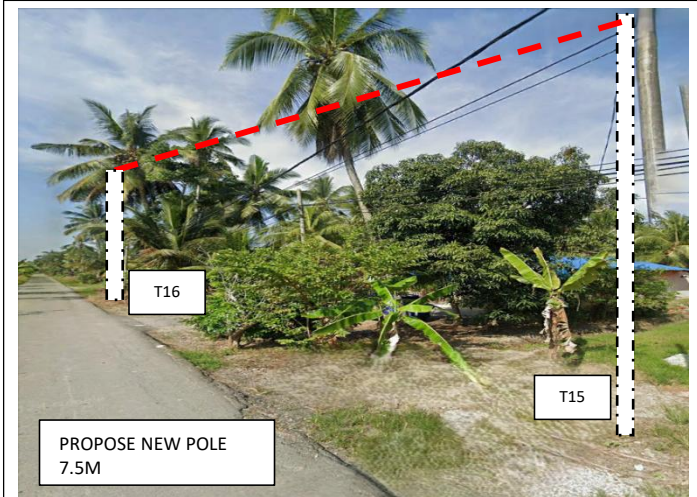
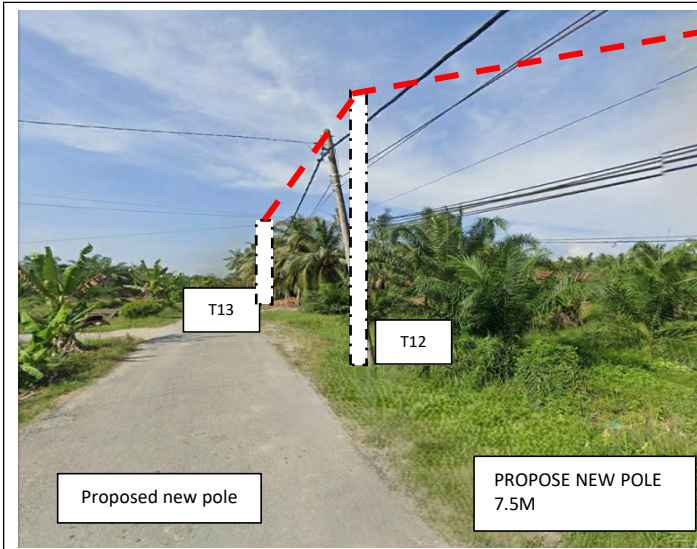


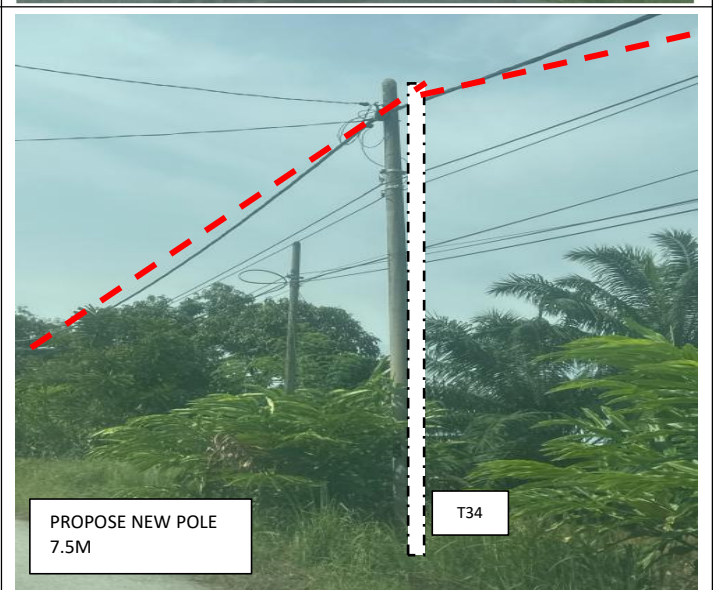
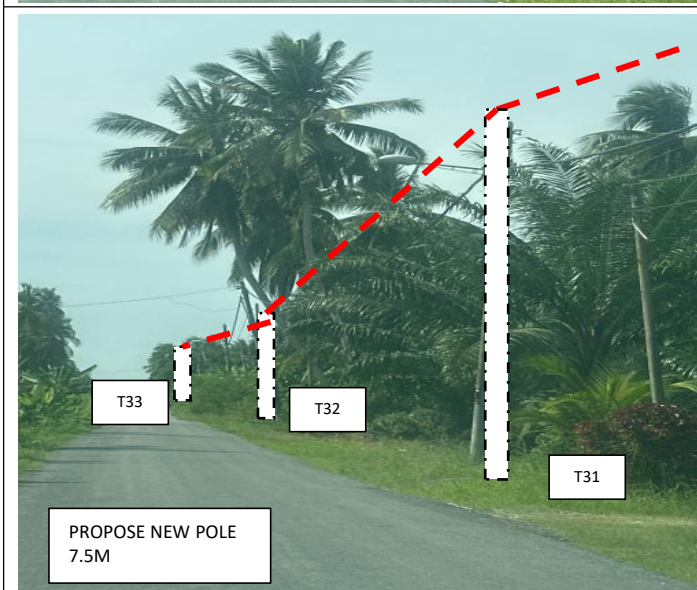
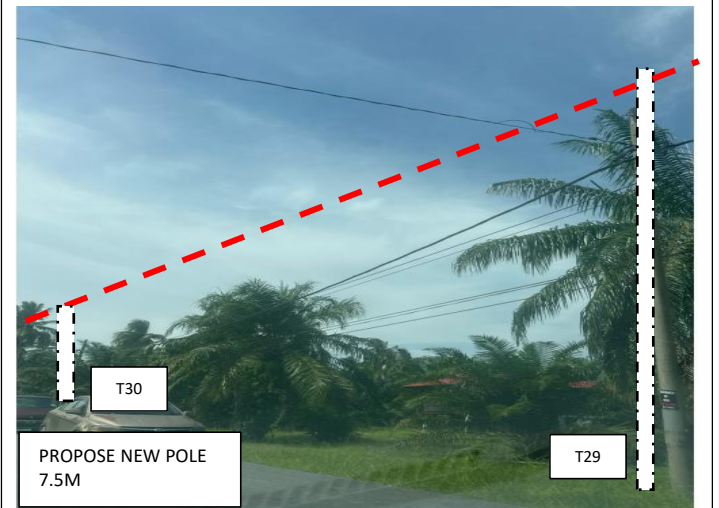
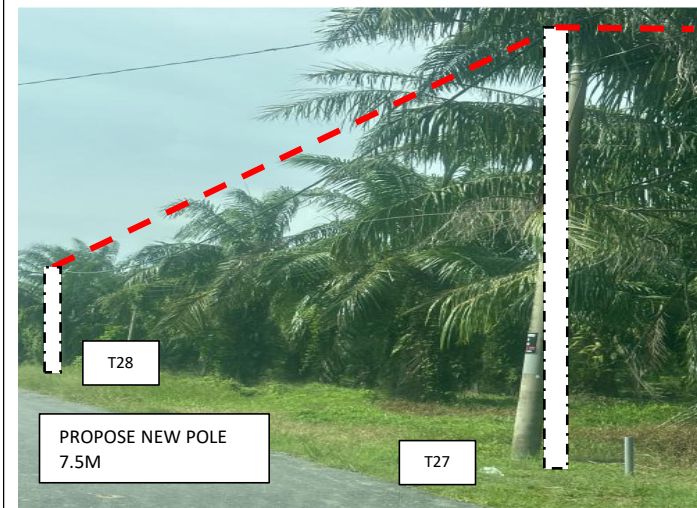
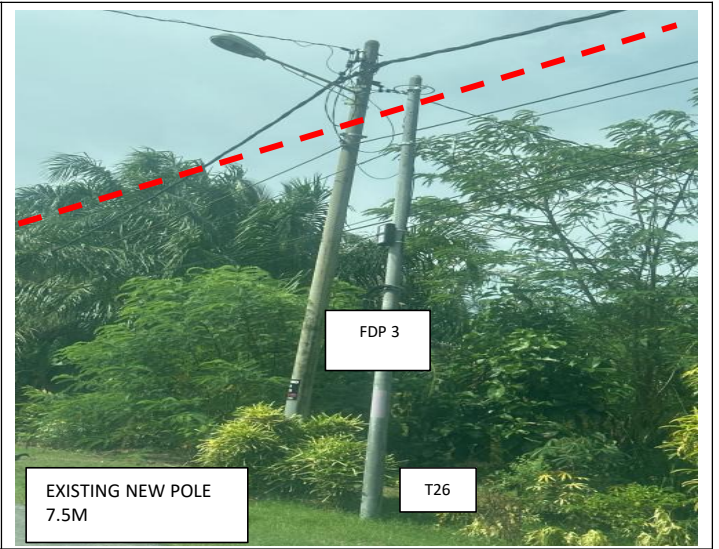
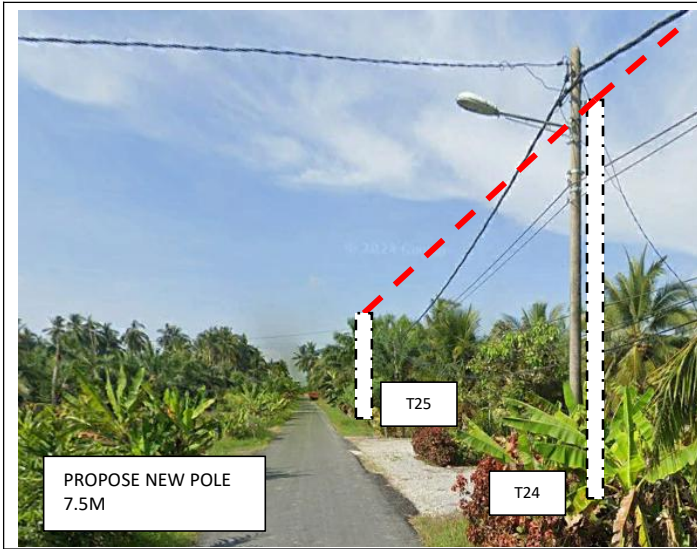
Proposed New Pole Coordinate

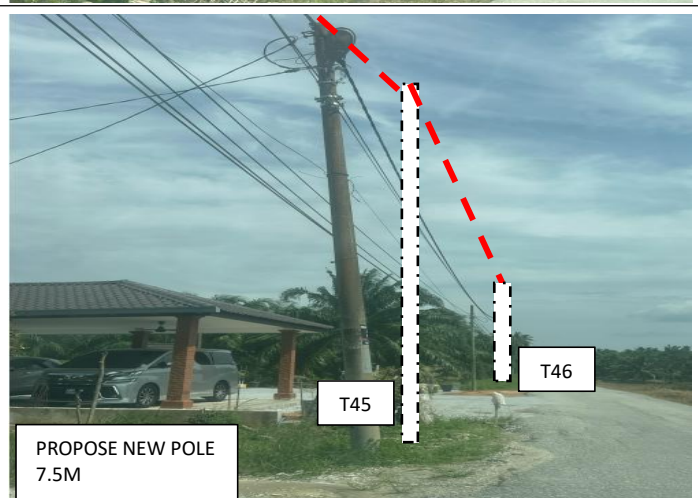
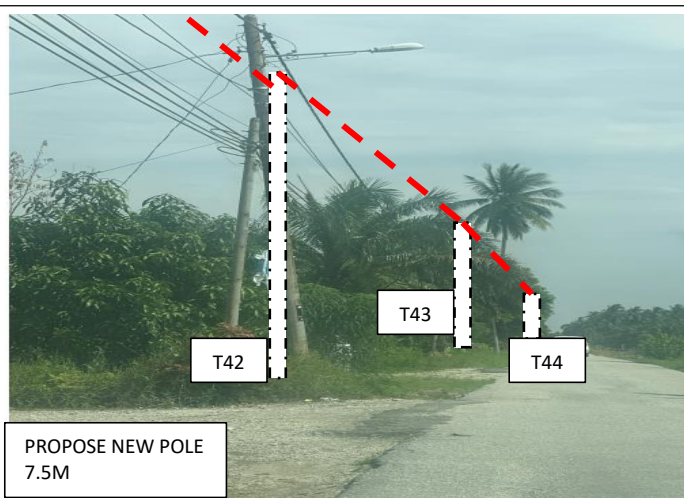
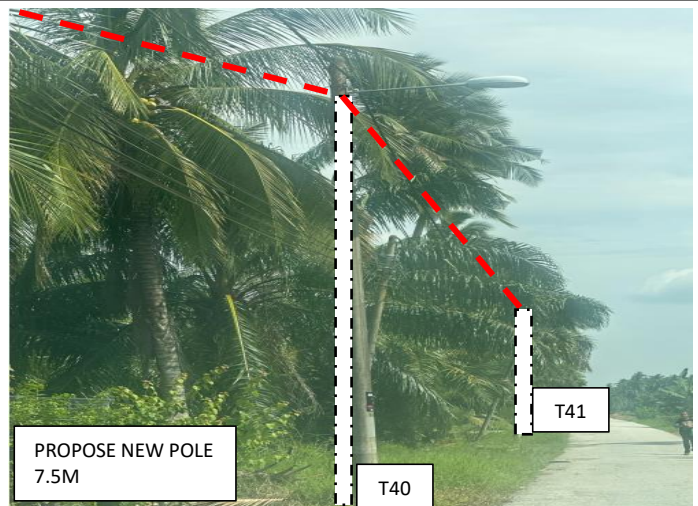
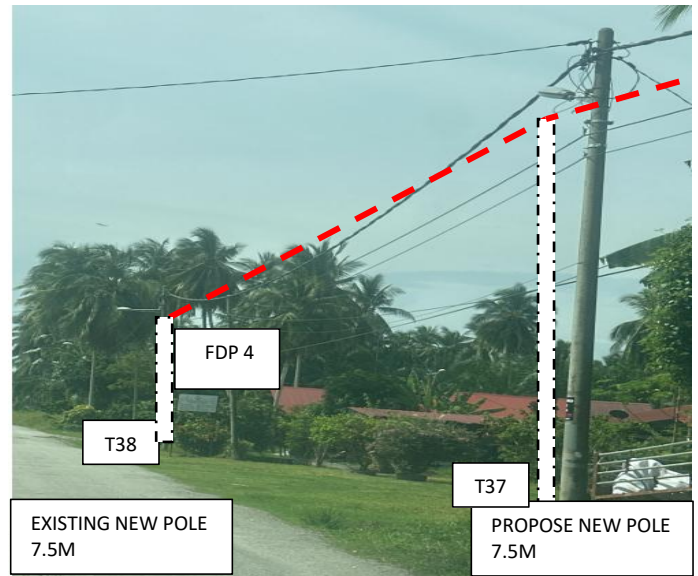
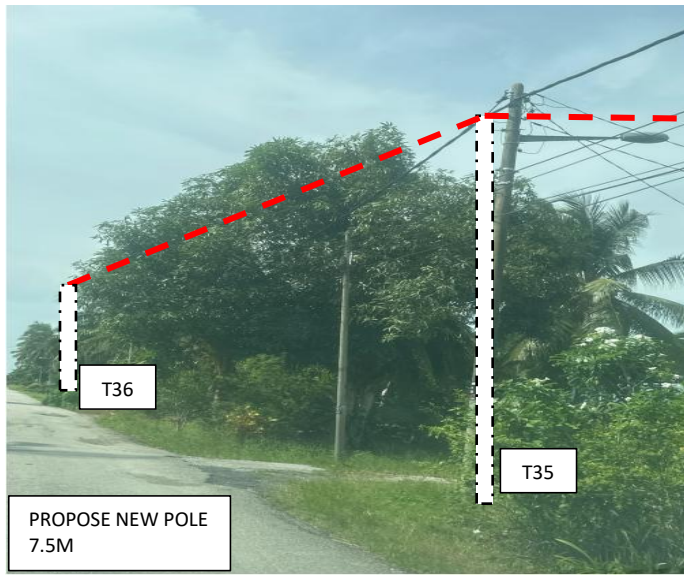
No.	Pole Number	Distance (m)	Latitude	Longitude	Local Authority
123	T123 (FDP 11)	38	3.903730	100.783362	JKR TELUK INTAN
124	T124 (JOINT)	35	3.904256	100.782942	MAJLIS PERBANDARAN TELUK INTAN
125	T125	40	3.904561	100.782993	MAJLIS PERBANDARAN TELUK INTAN
126	T126	30	3.904907	100.783062	MAJLIS PERBANDARAN TELUK INTAN
127	T127 (FDP 12)	50	3.905184	100.783094	MAJLIS PERBANDARAN TELUK INTAN
128	T128	53	3.905650	100.783185	MAJLIS PERBANDARAN TELUK INTAN
129	T129	32	3.906132	100.783247	MAJLIS PERBANDARAN TELUK INTAN
130	T130	45	3.906208	100.782955	MAJLIS PERBANDARAN TELUK INTAN
131	T131	15	3.906285	100.782554	MAJLIS PERBANDARAN TELUK INTAN
132	T132	24	3.906353	100.782438	MAJLIS PERBANDARAN TELUK INTAN
133	T133	25	3.906562	100.782468	MAJLIS PERBANDARAN TELUK INTAN
134	T134 (FDP 13)	27	3.906777	100.782510	MAJLIS PERBANDARAN TELUK INTAN
135	T135	28	3.907021	100.782544	MAJLIS PERBANDARAN TELUK INTAN
136	T136 (FDP 14)	24	3.907270	100.782584	MAJLIS PERBANDARAN TELUK INTAN
137	T137	25	3.907474	100.782626	MAJLIS PERBANDARAN TELUK INTAN
138	T138	32	3.907691	100.782668	MAJLIS PERBANDARAN TELUK INTAN
139	T139 (FDP 15)	30	3.907973	100.782726	MAJLIS PERBANDARAN TELUK INTAN
140	T140 (JOINT)	2	3.890675	100.773644	MAJLIS PERBANDARAN TELUK INTAN

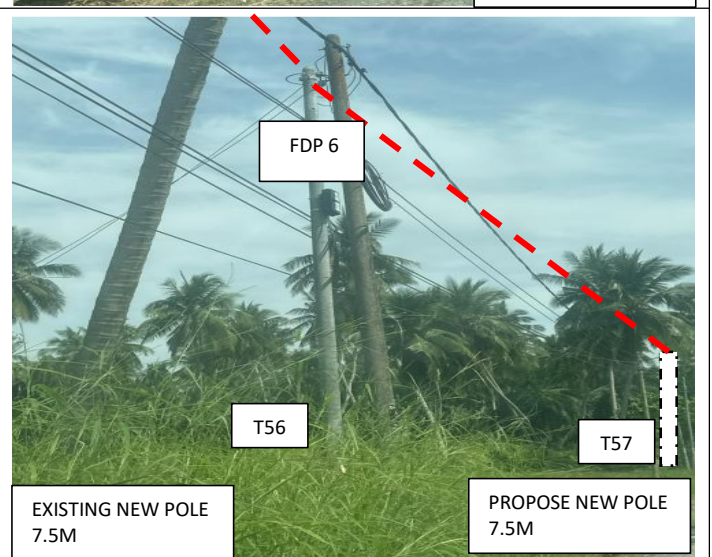
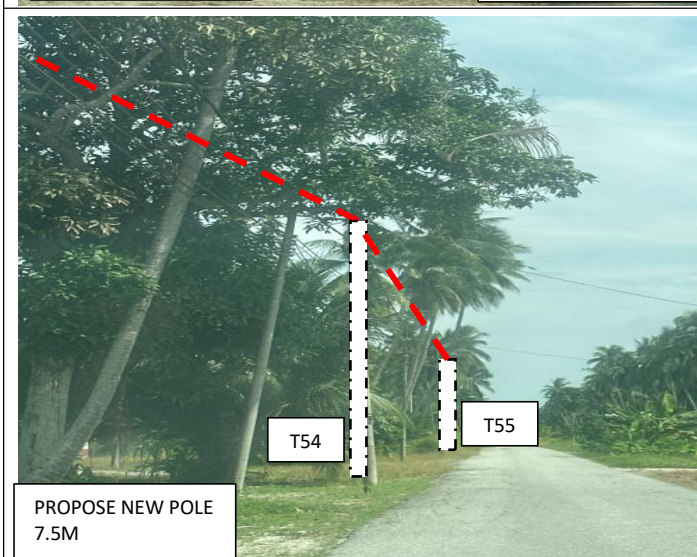
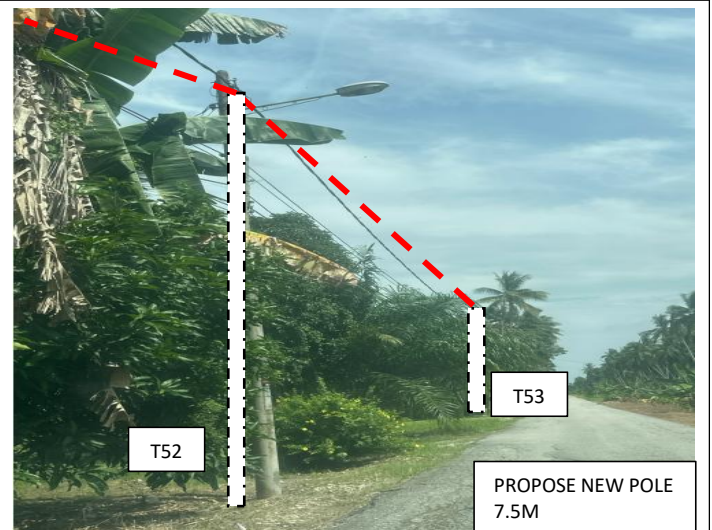
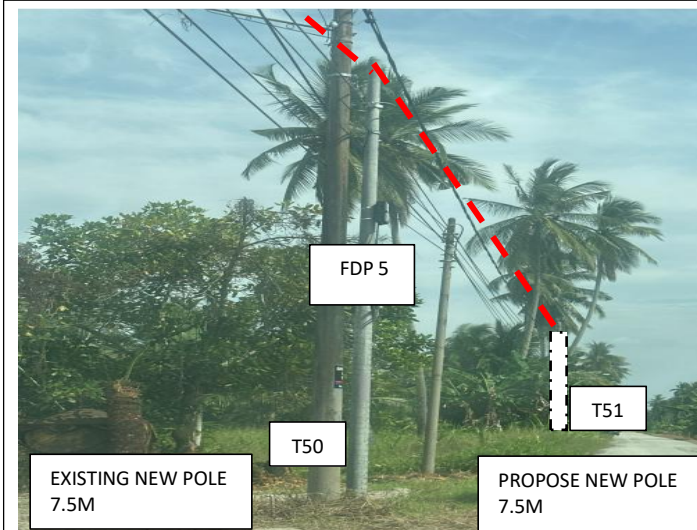
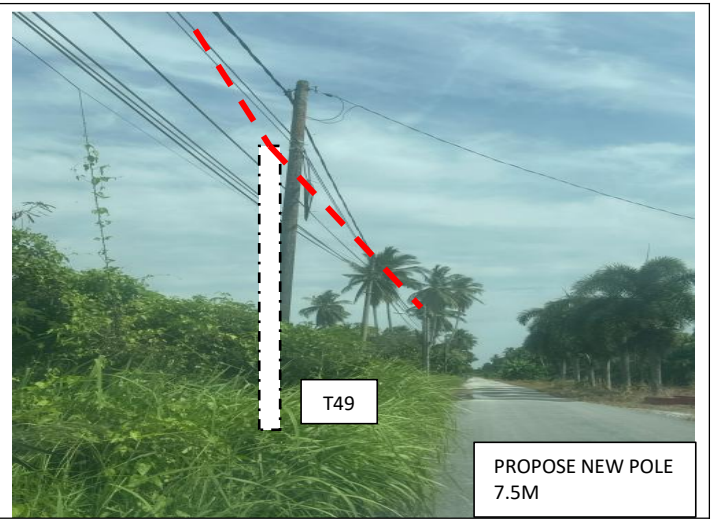
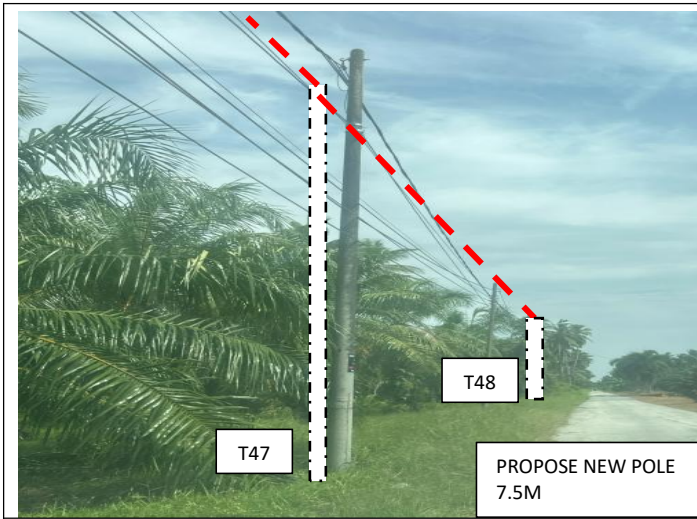
6.0 SITE PHOTOS - PROPOSED NEW POLE

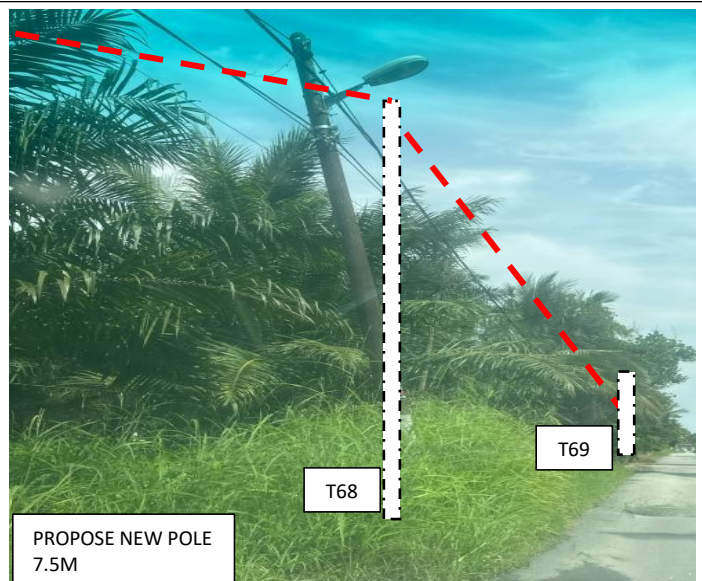
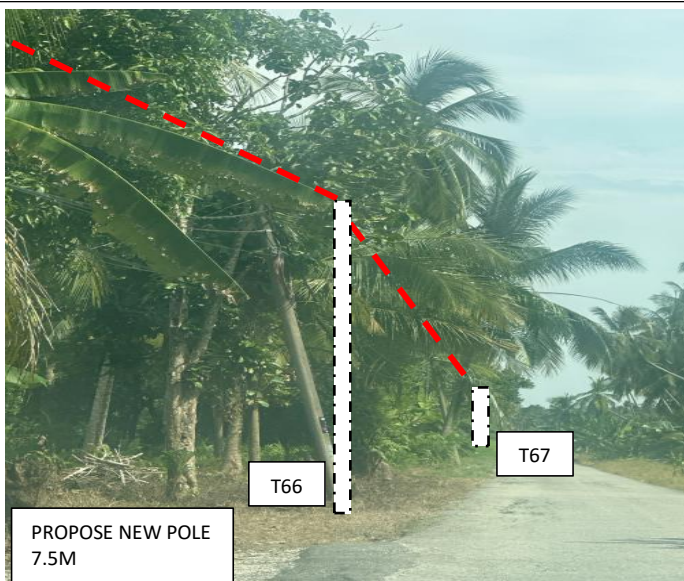
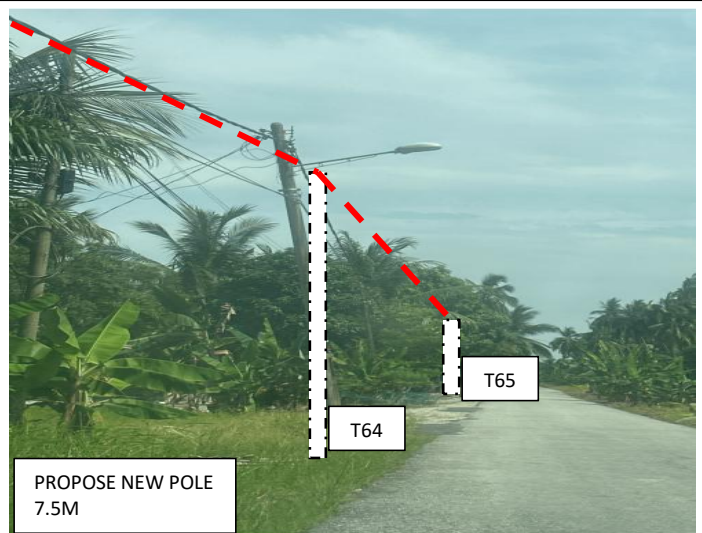
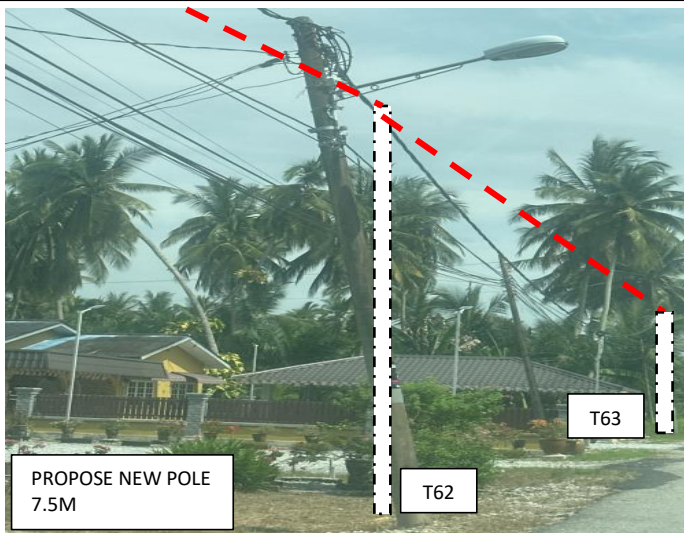
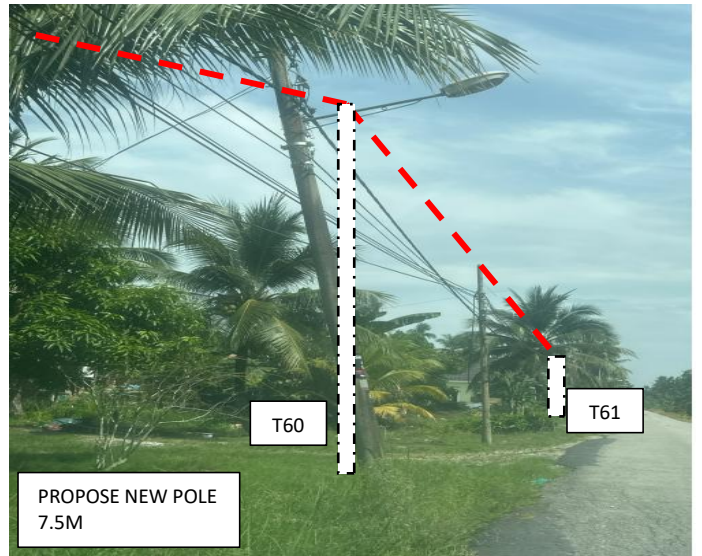
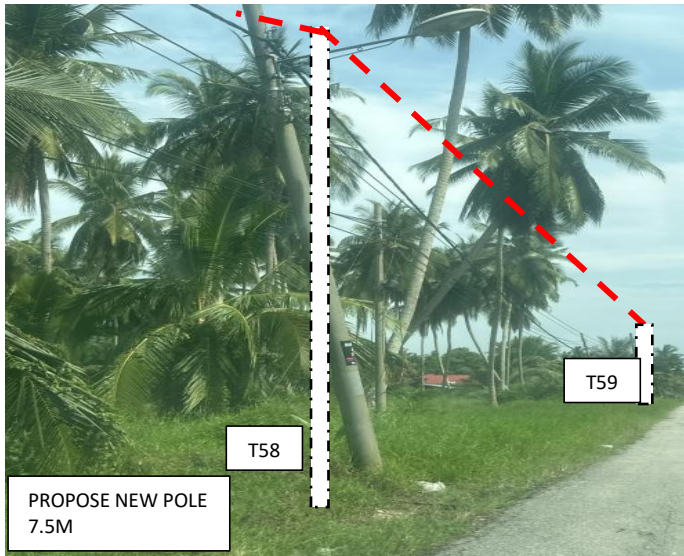


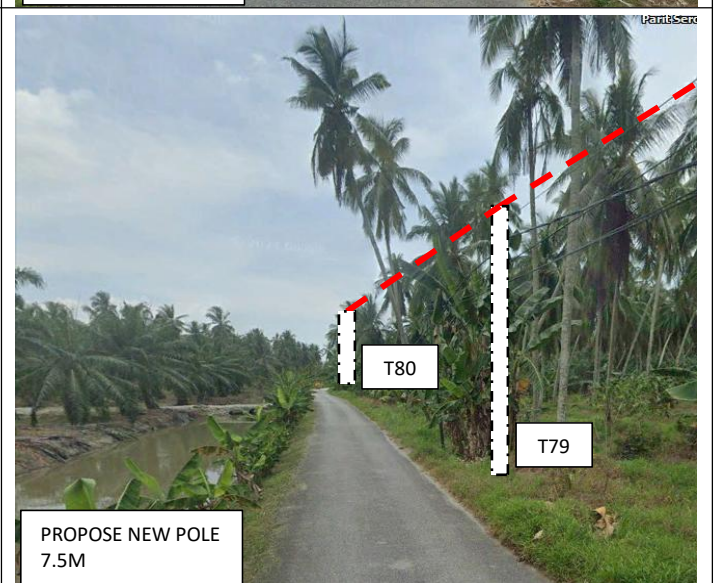
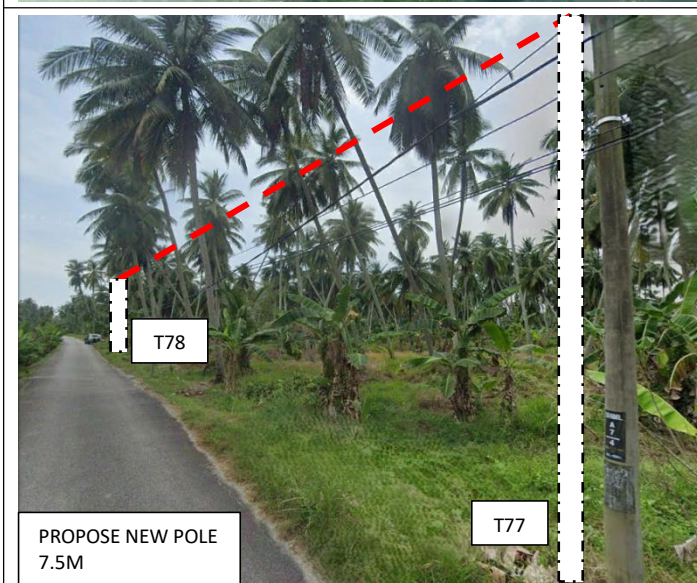
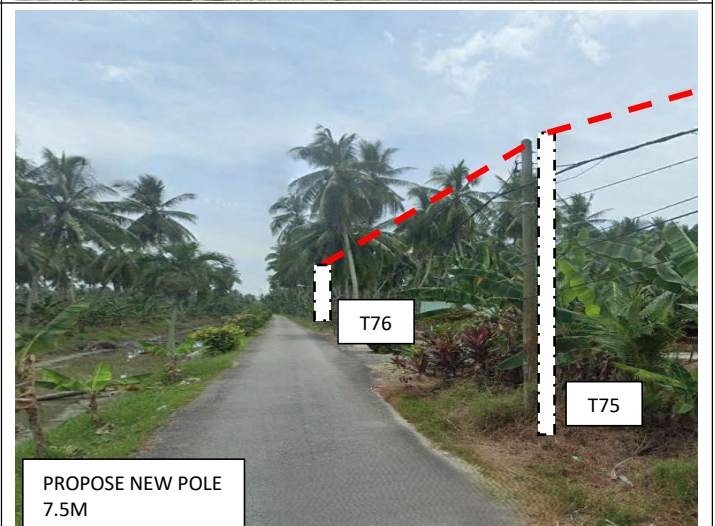
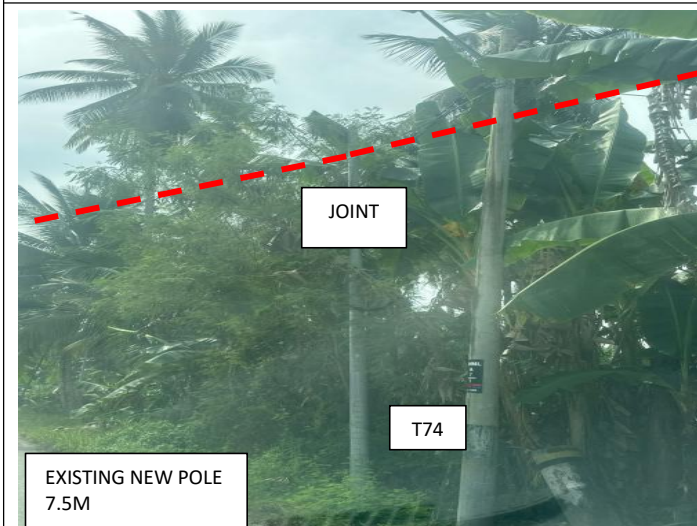
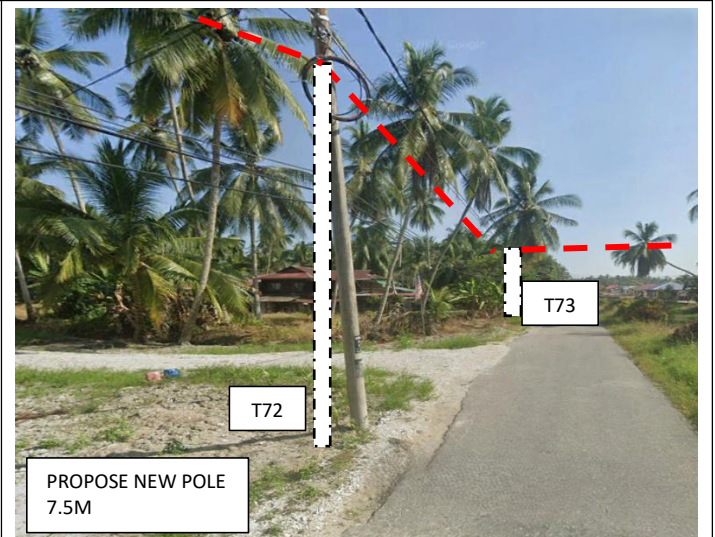
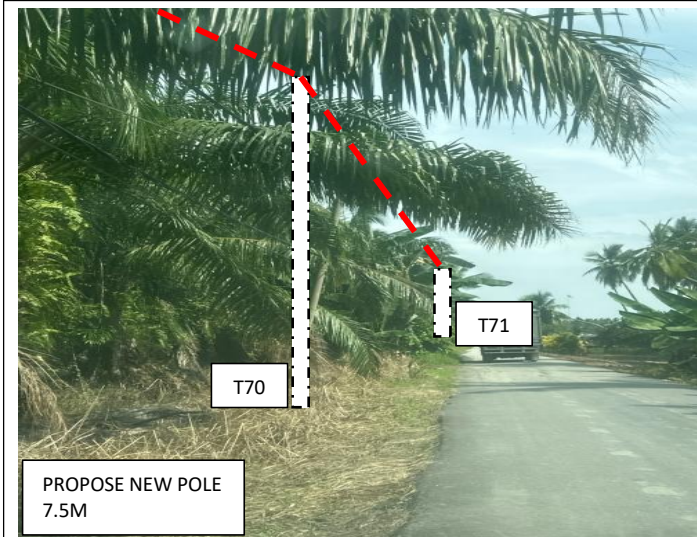


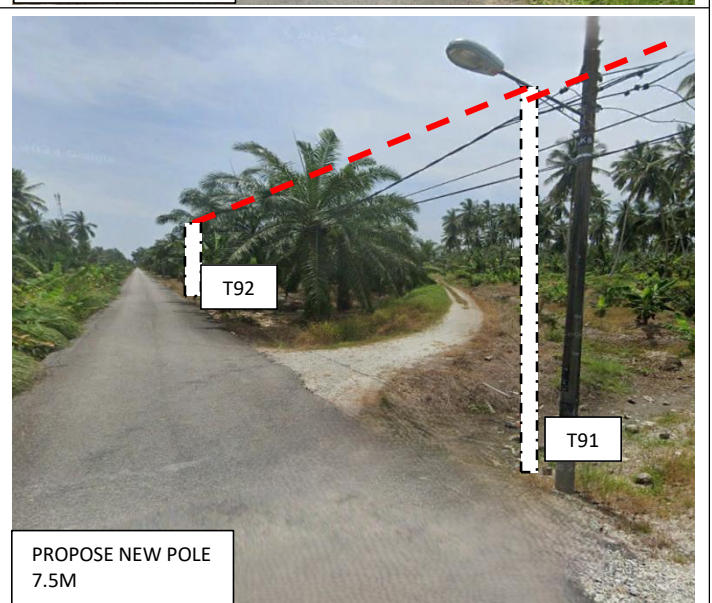
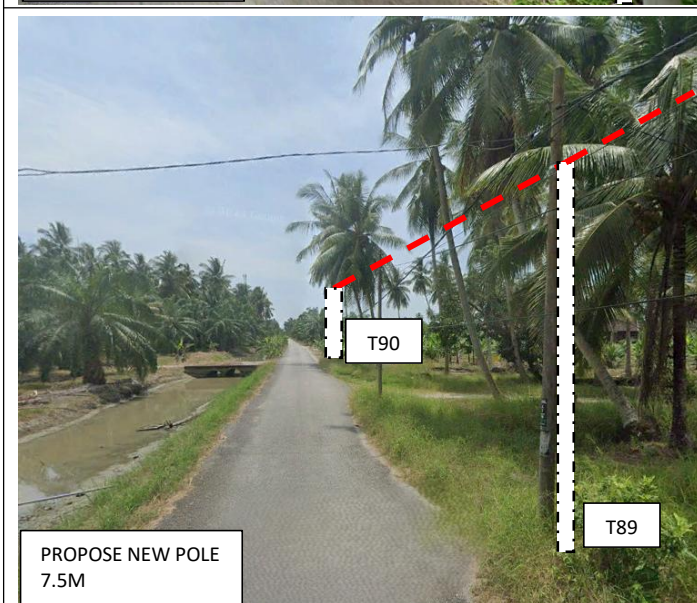
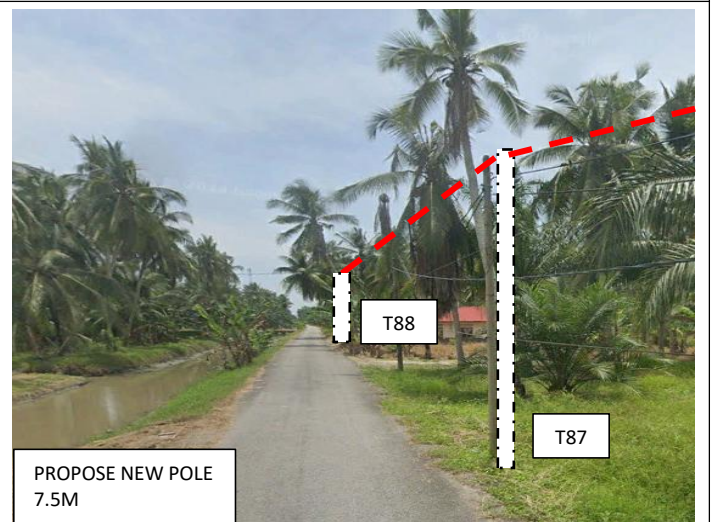
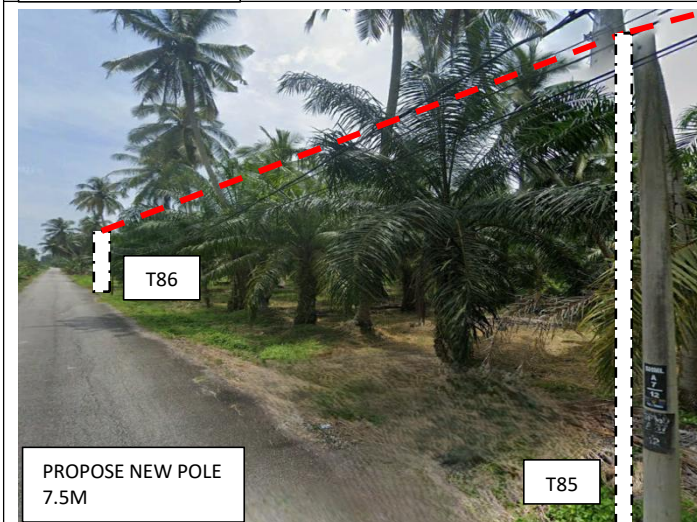
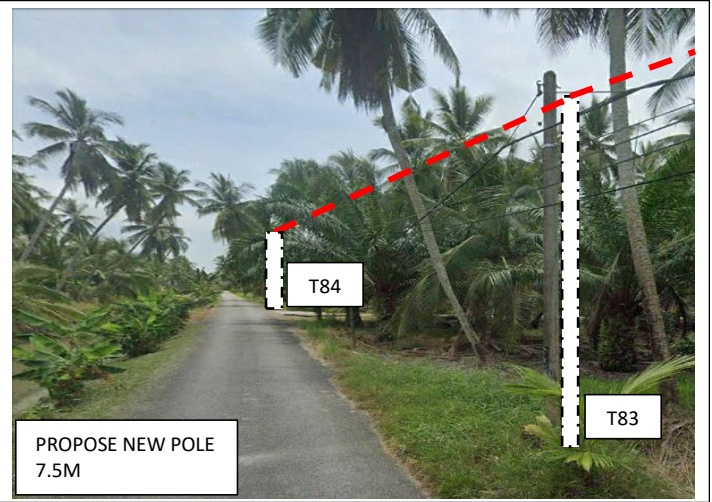
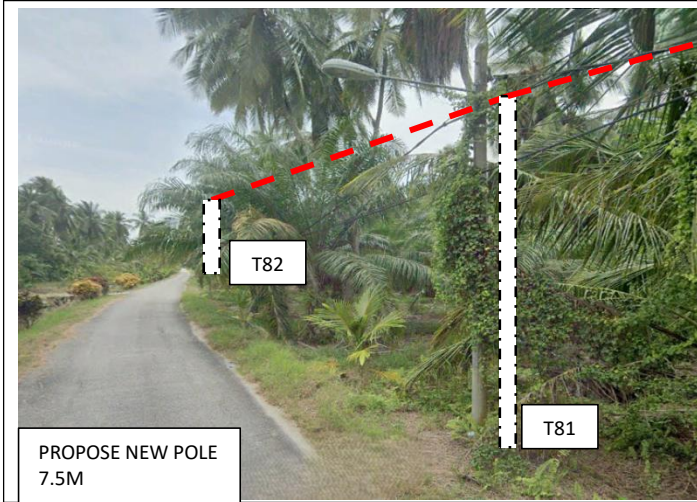


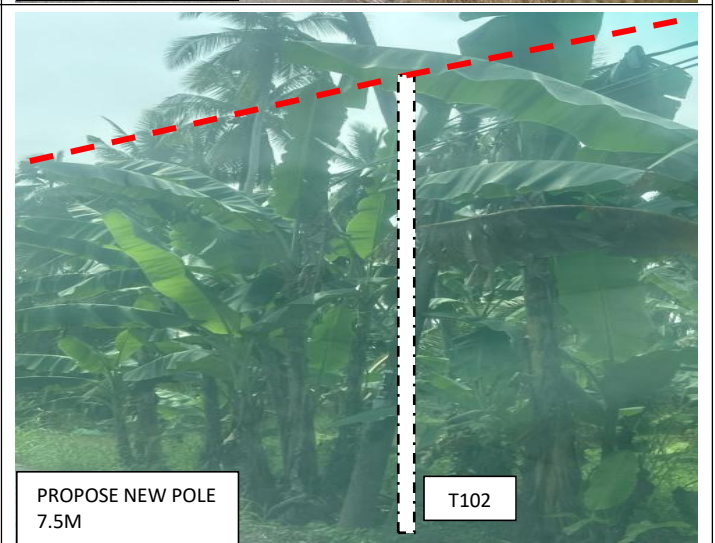
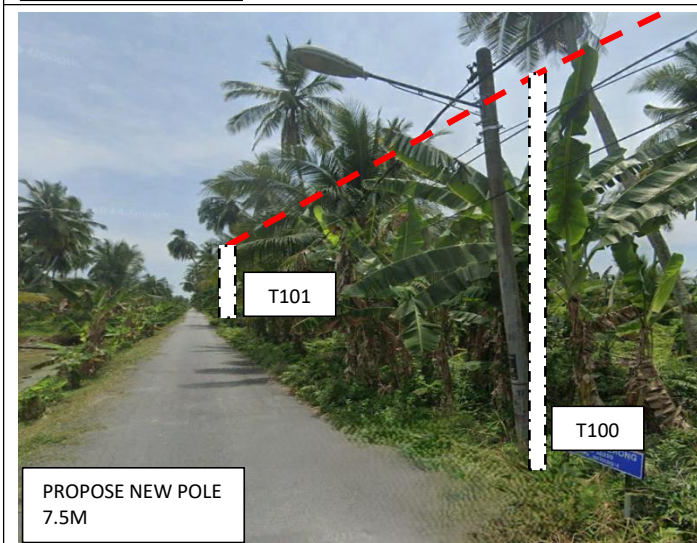
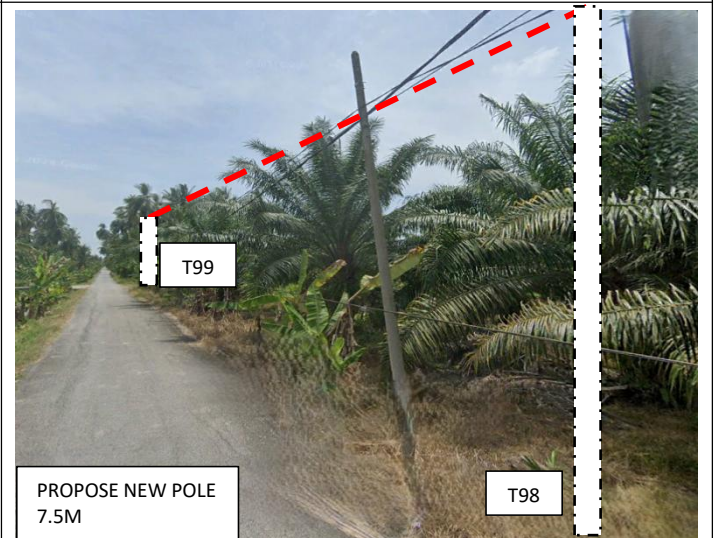
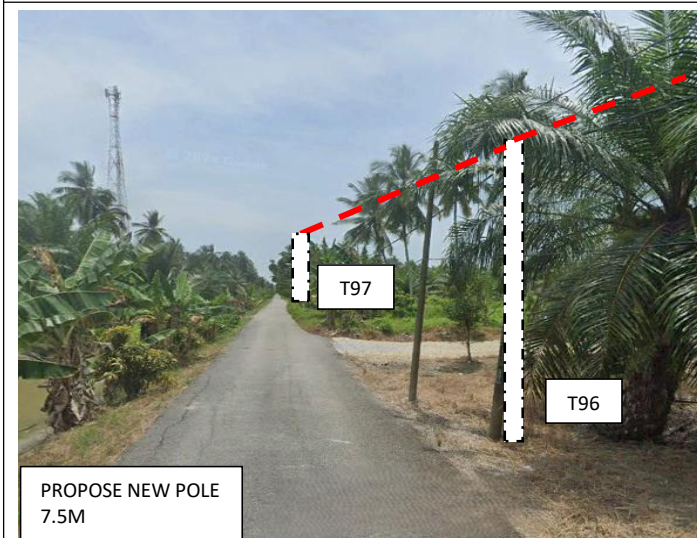
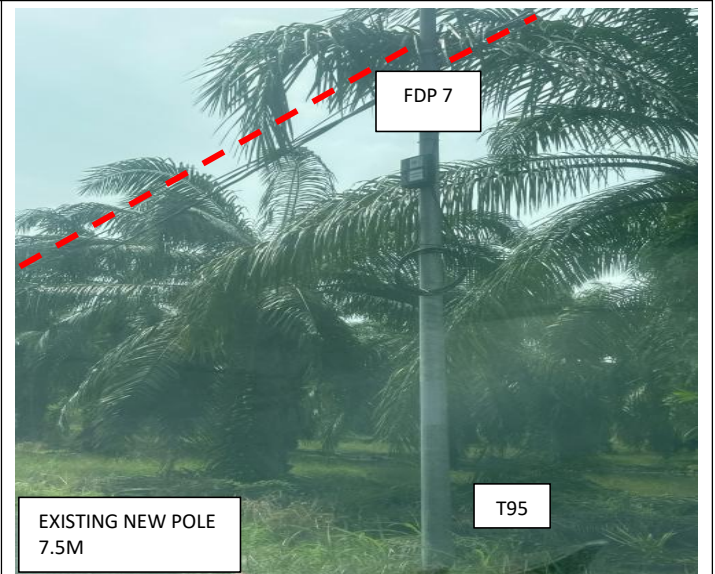
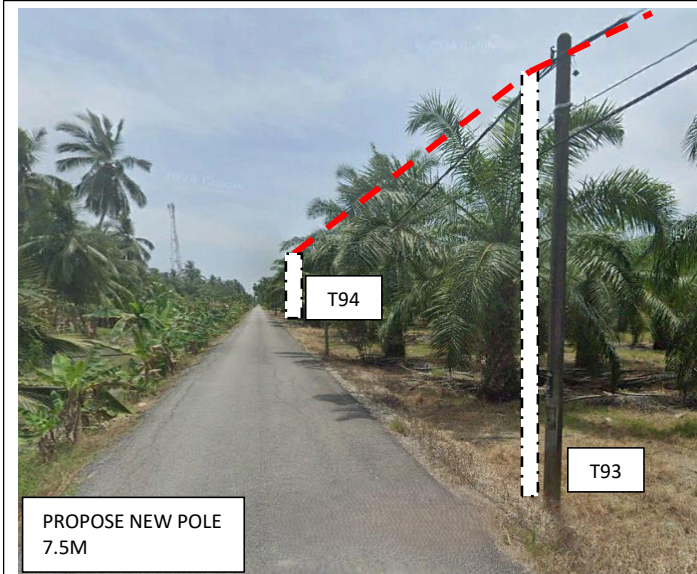


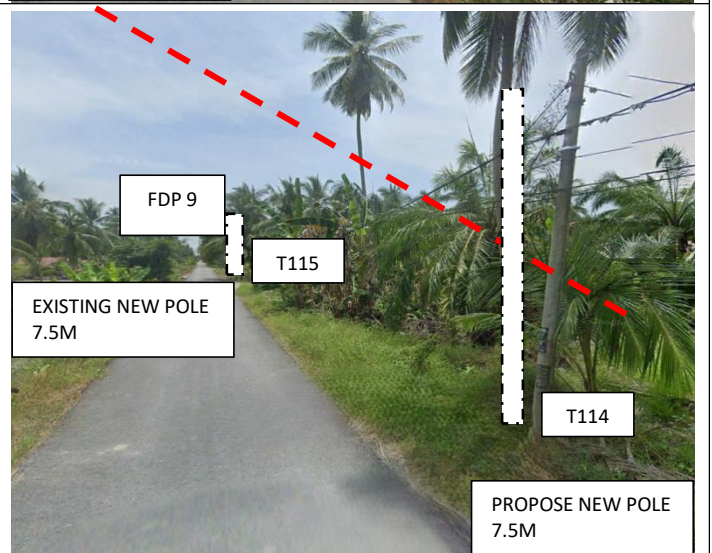
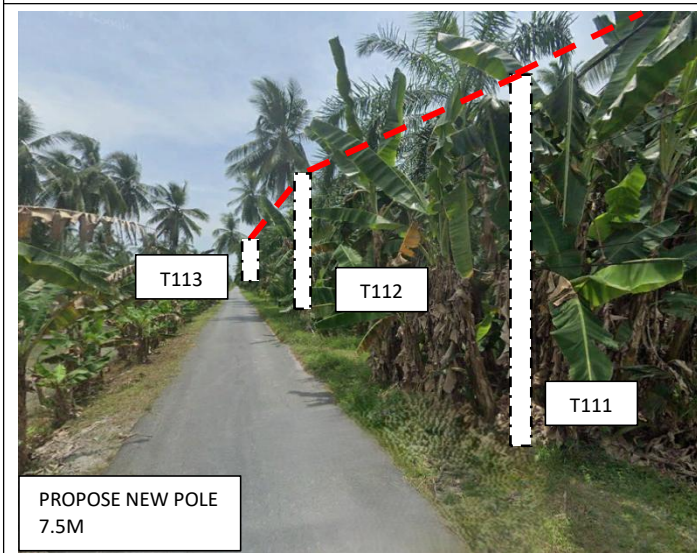
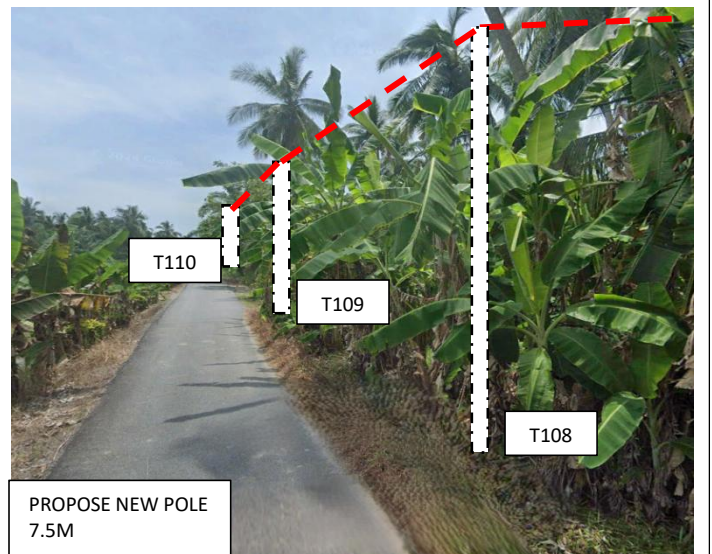
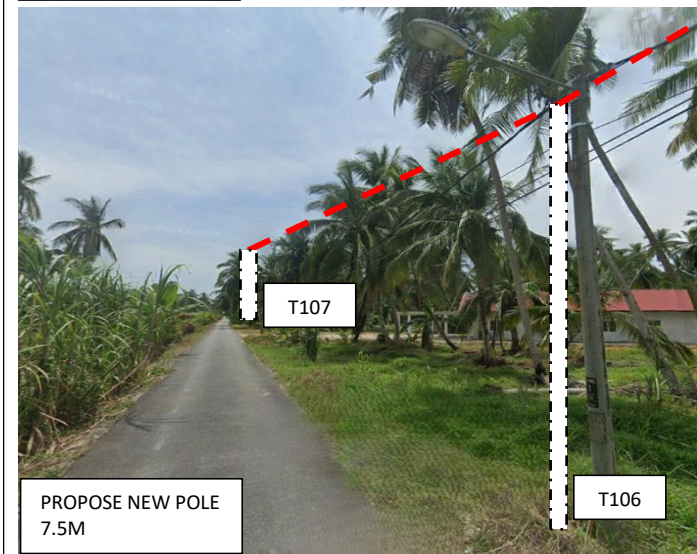
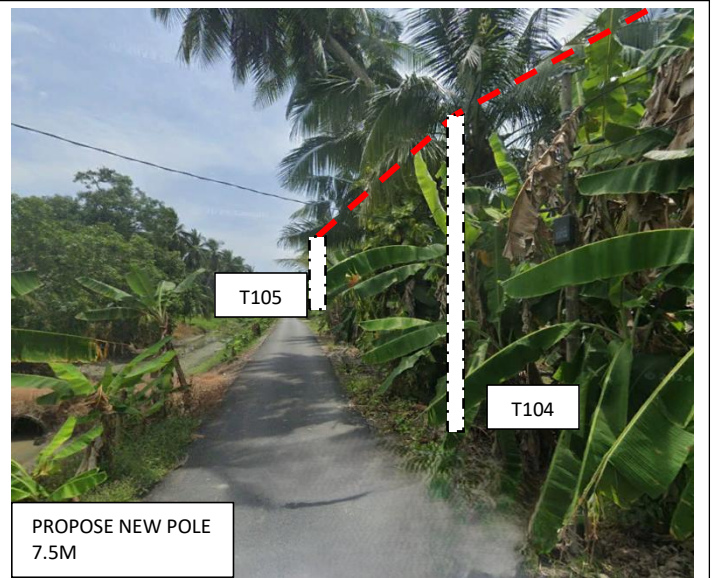


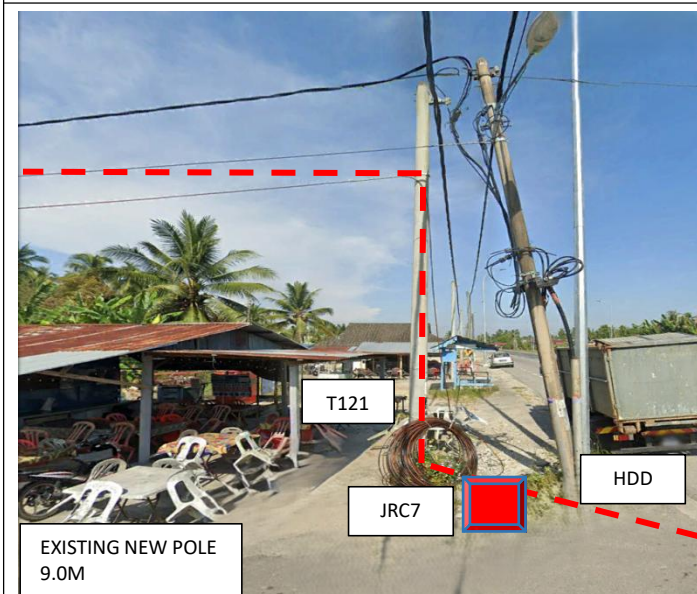
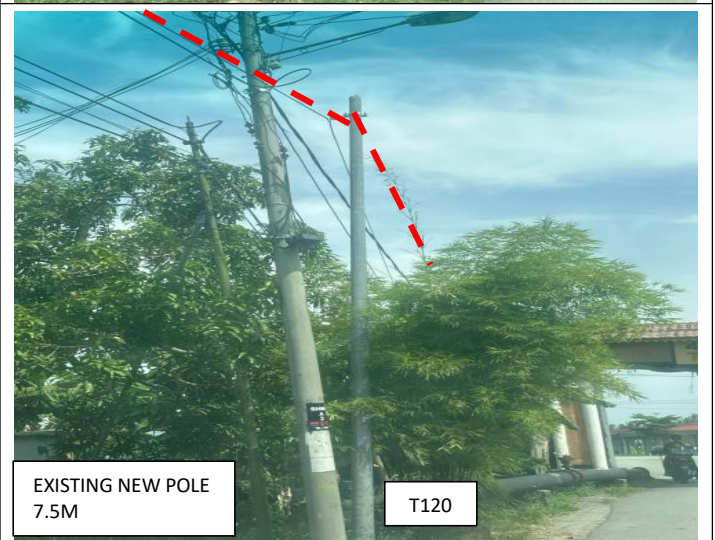
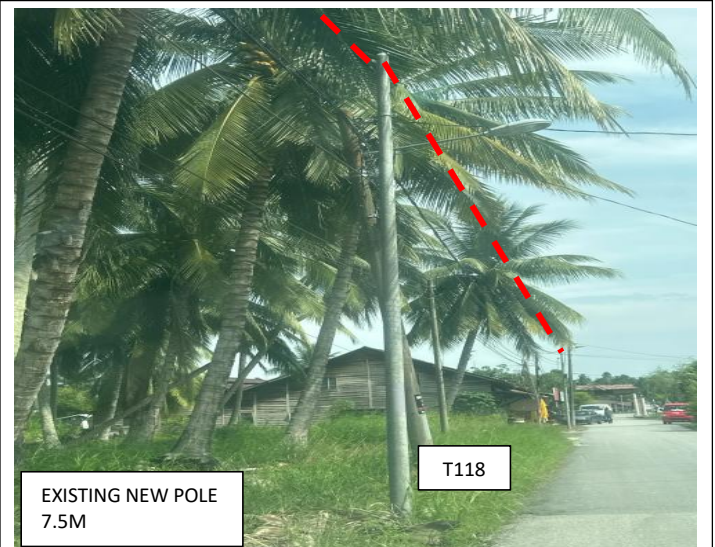
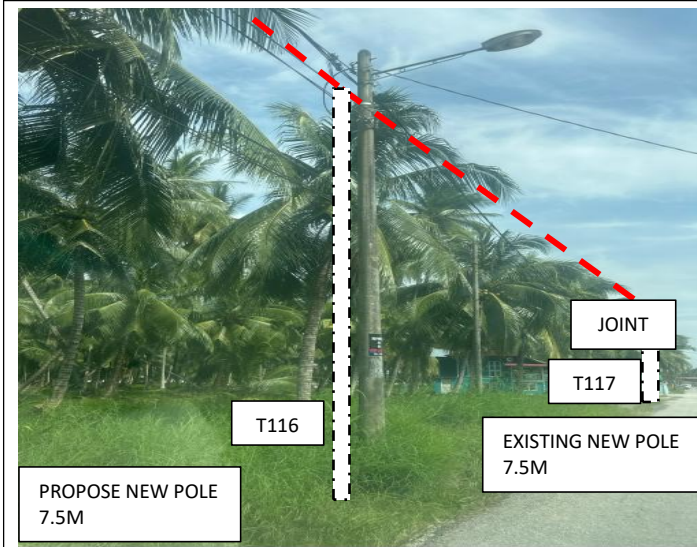


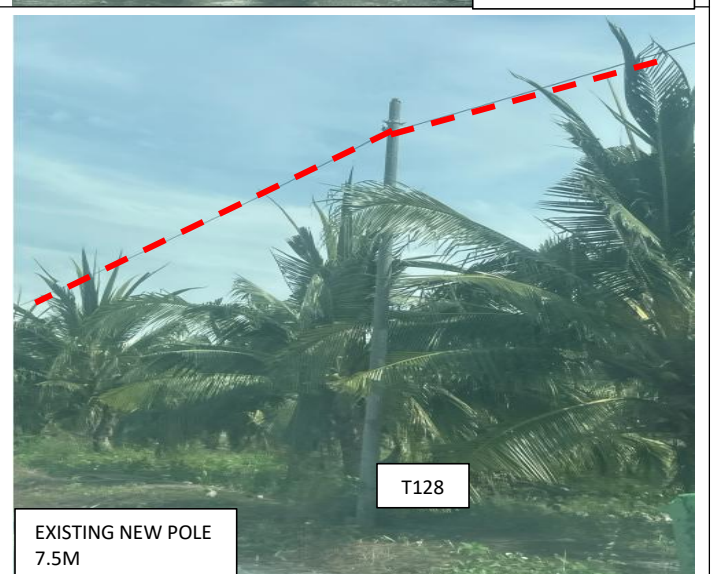
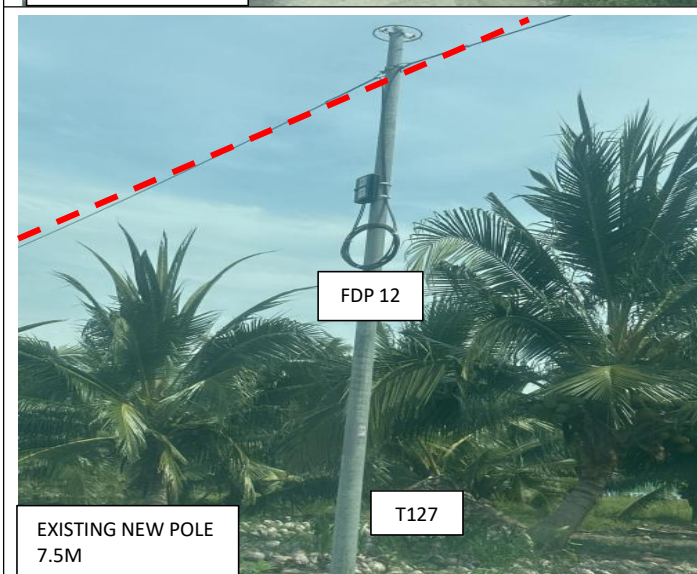
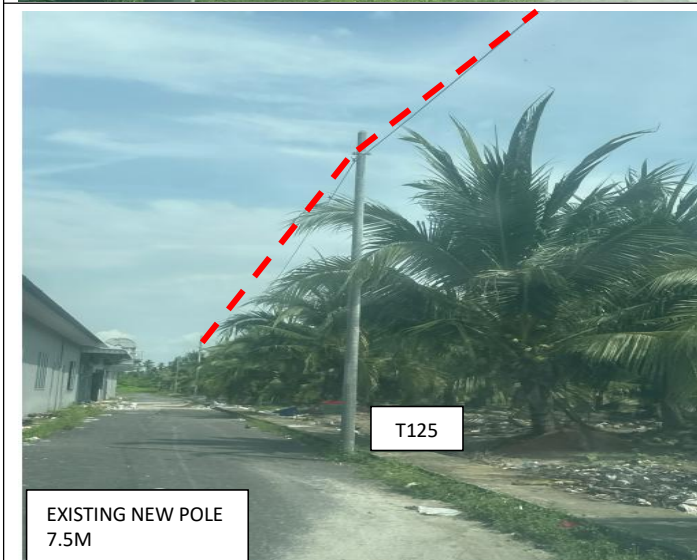
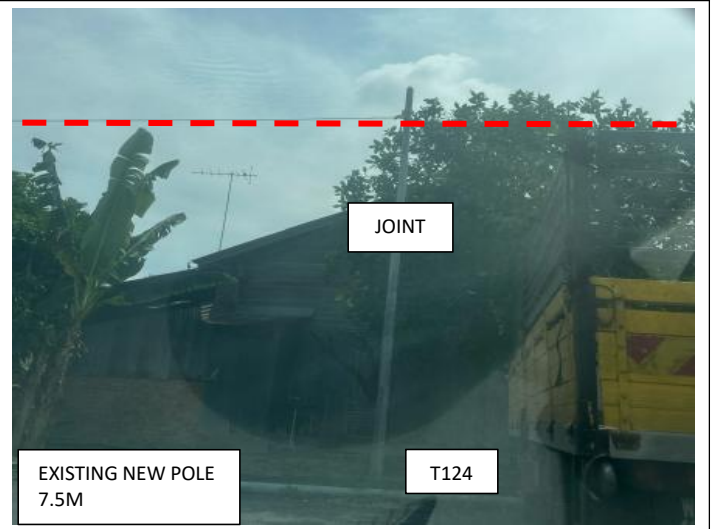


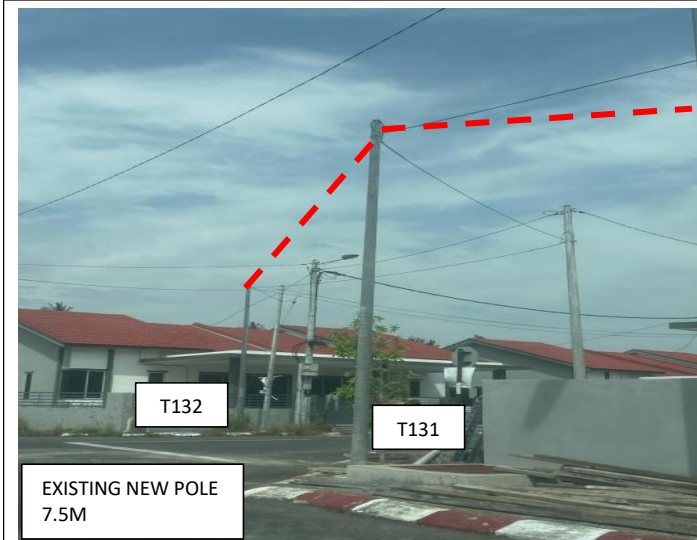
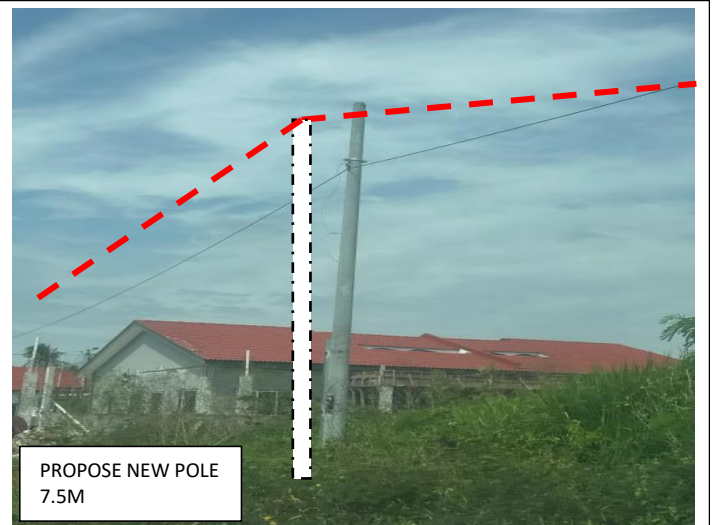
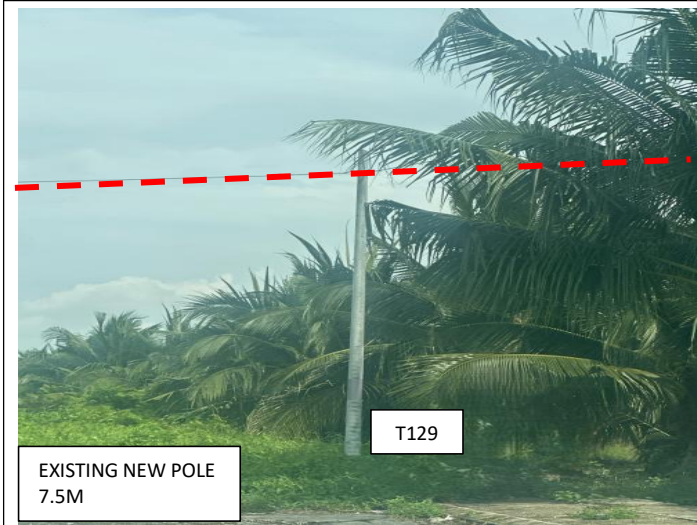


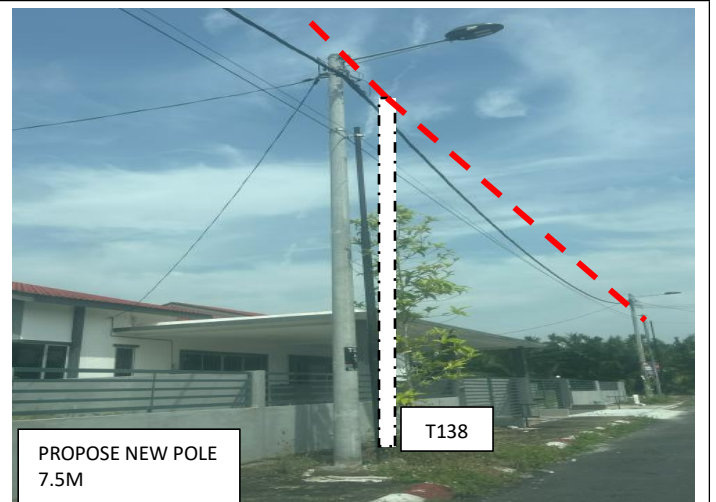
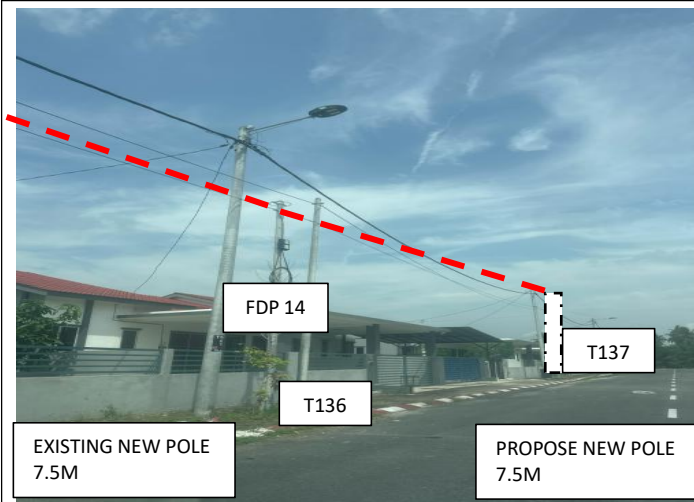














PROJEK PENYEDIAAN DAN PENYELENGGARAAN POINT OF PRESENT (POP) FASA 2: HAB INFRASTRUKTUR GENTIAN OPTIK BERHAMPIRAN DENGAN SEKOLAH, KAWASAN PERINDUSTRIAN, PREMIS KERAJAAN DAN KOMUNITI SEKITARNYA OLEH KEMENTERIAN KOMUNIKASI MALAYSIA - ZON UTARA (KKMM.400-11/17/132(1))

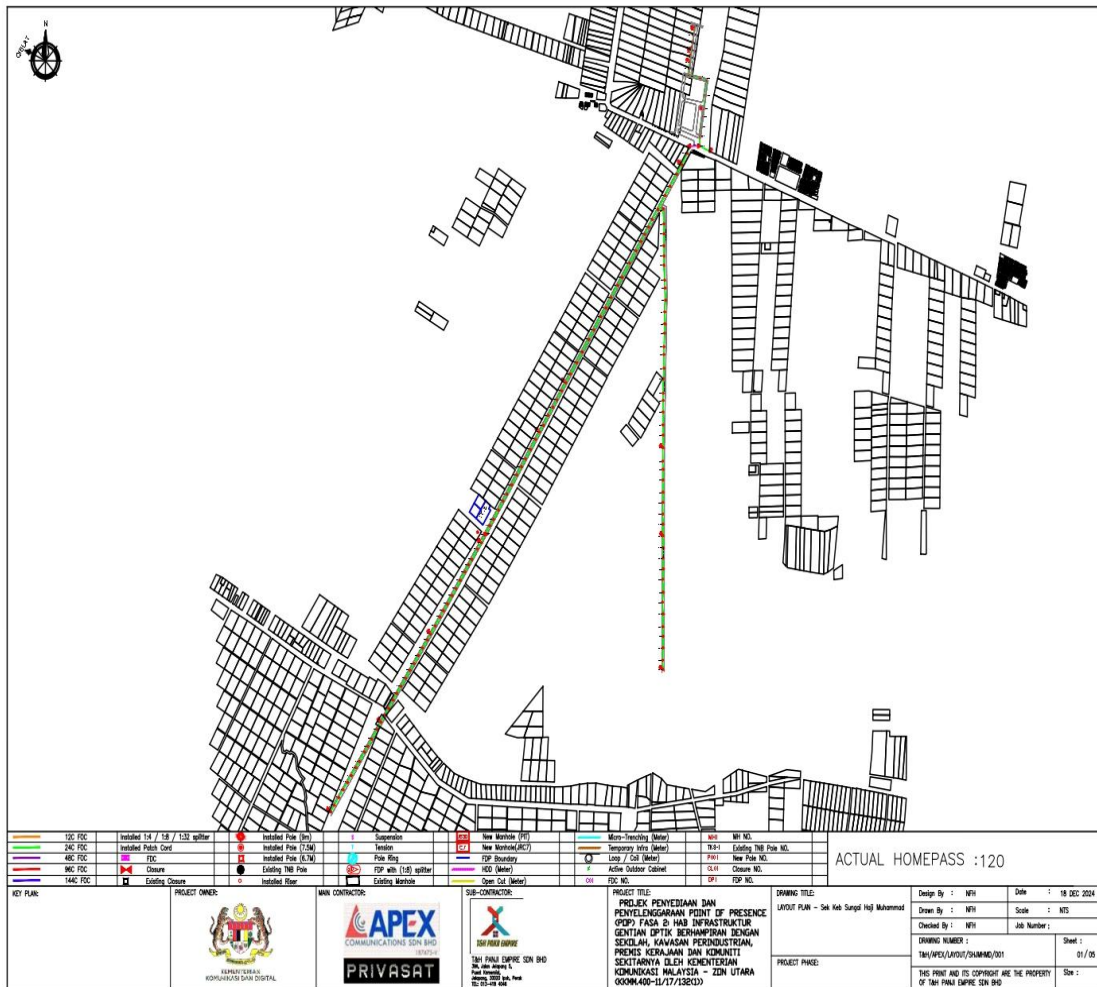


7.0 3rd PARTIES DEPENDENCIES

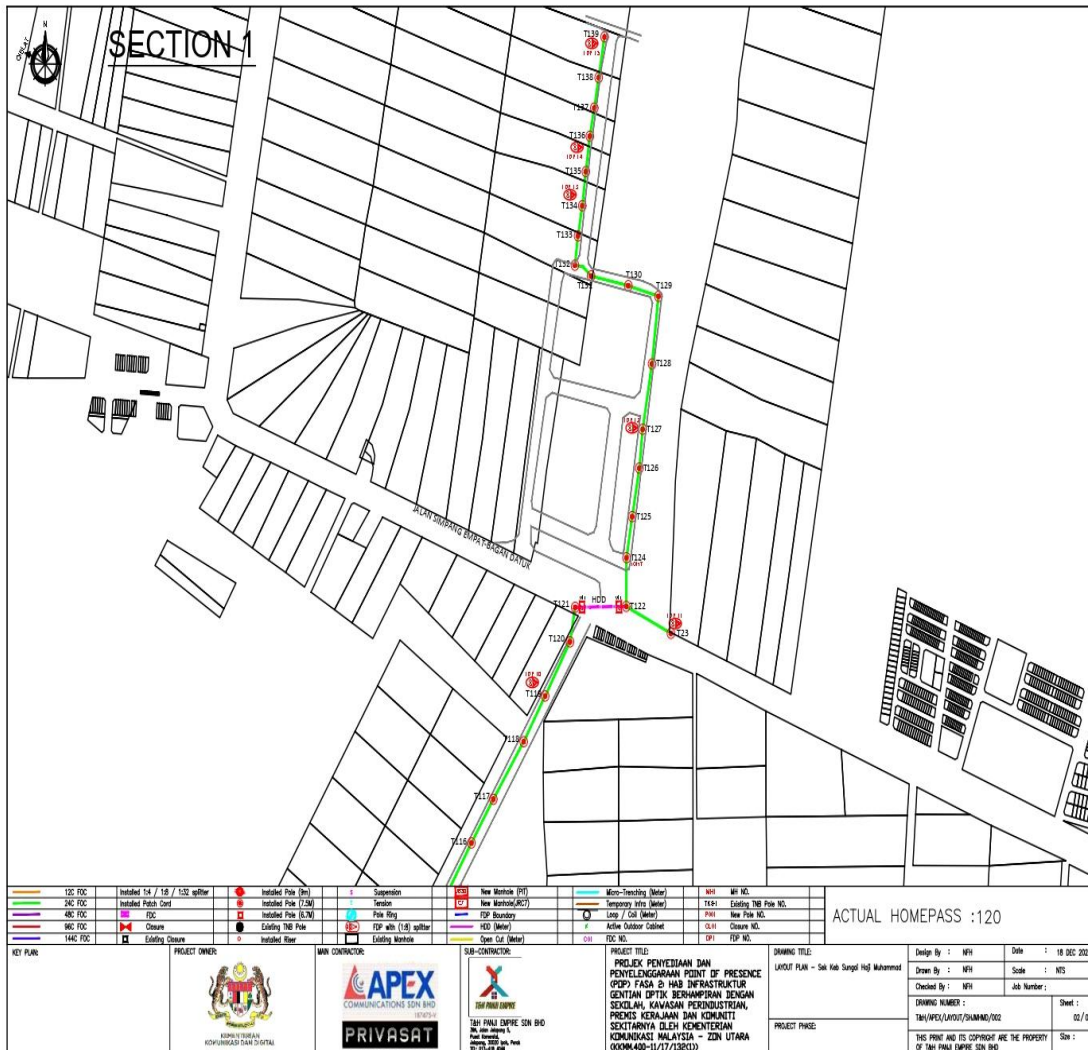
NO	LOCAL COUNCIL / AUTHORITY	REMARK
1	Majlis Perbandaran Teluk Intan	5800 M
2	JKR Teluk Intan	200 M

8.0 Drawing

Layout 1



Layout 2

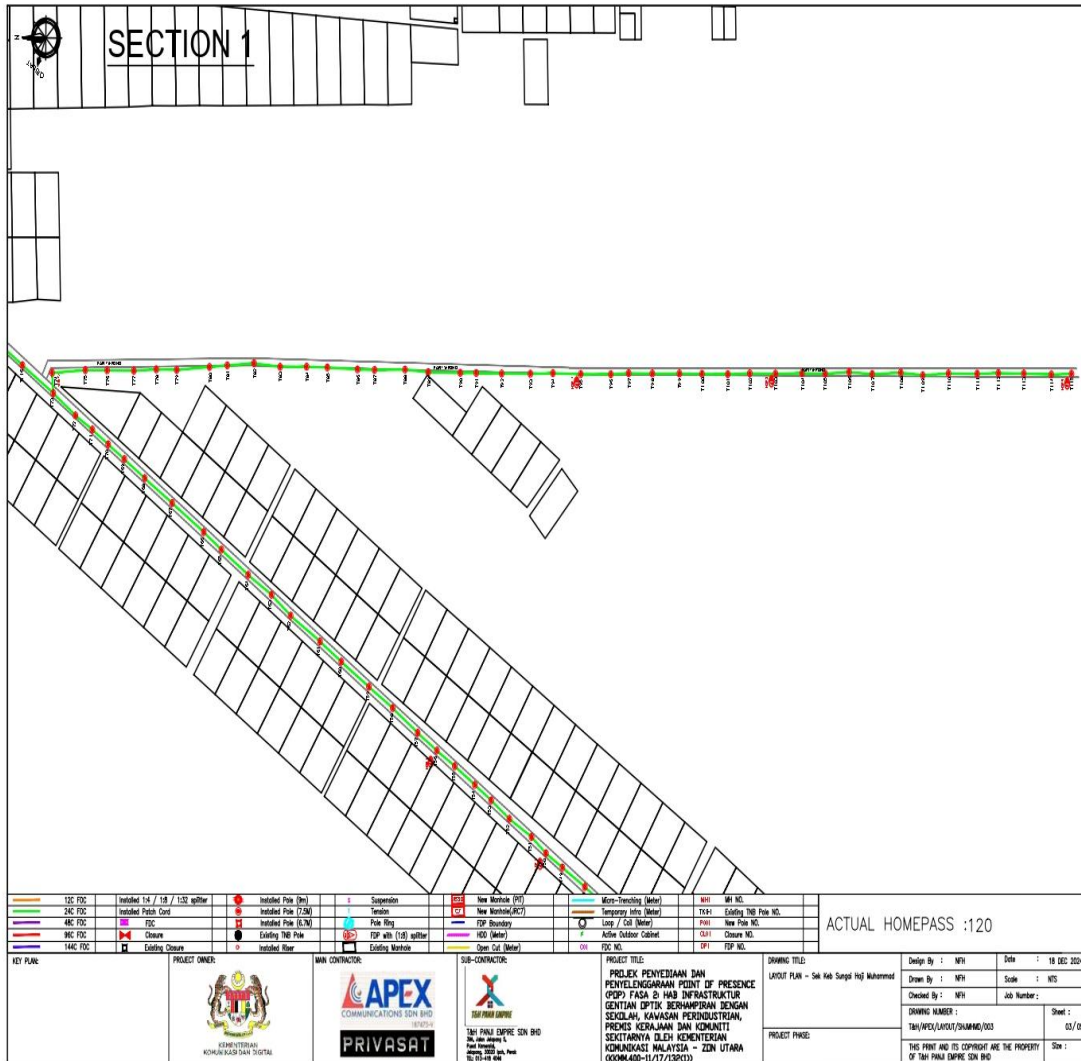




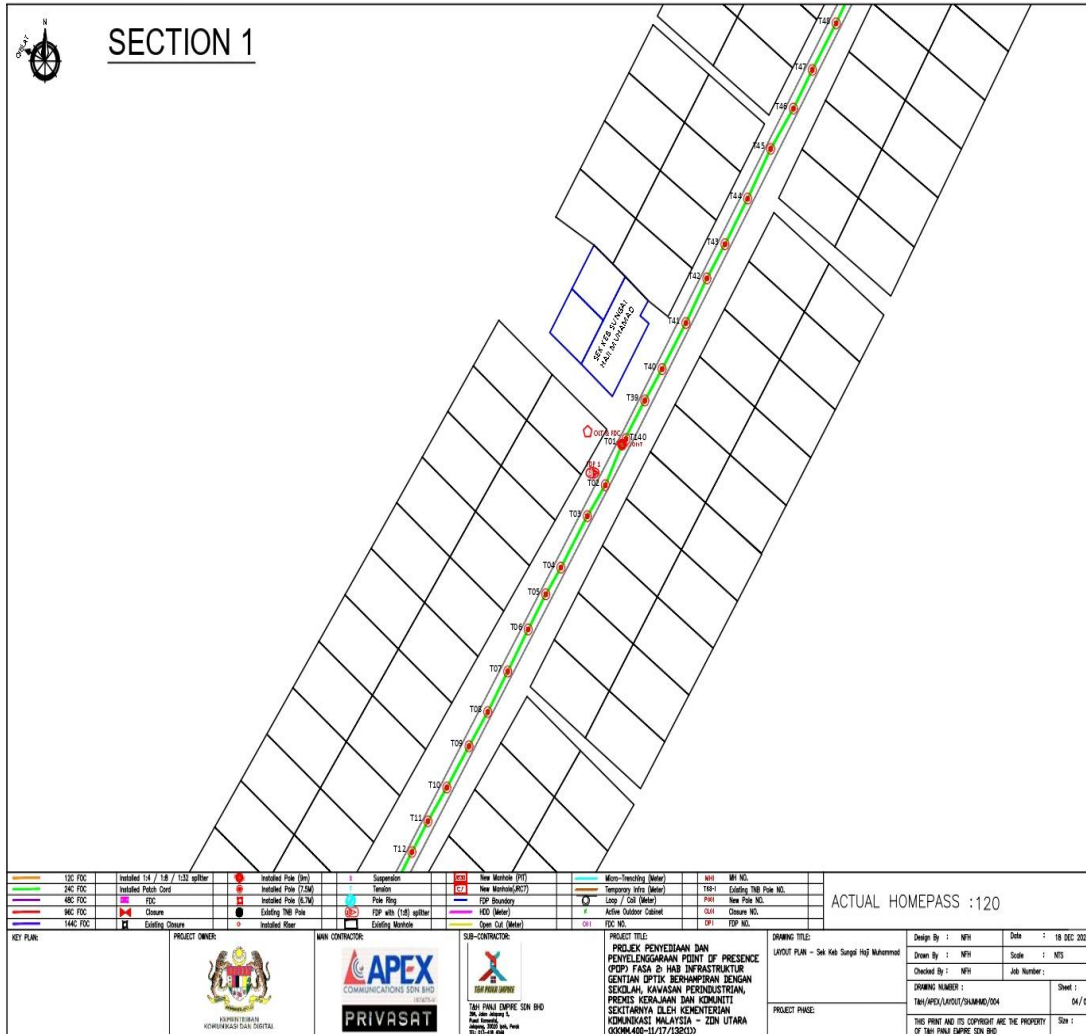
PROJEK PENYEDIAAN DAN PENYELENGGARAAN POINT OF PRESENCE (POP) FASA 2: HAB INFRASTRUKTUR GENTIAN OPTIK BERHAMPIRAN DENGAN SEKOLAH, KAWASAN PERINDUSTRIAN, PREMIS KERAJAAN DAN KOMUNITI SEKITARNYA OLEH KEMENTERIAN KOMUNIKASI MALAYSIA - ZON UTARA (KKMM.400-11/17/132(1))



Layout 3



Layout 4



Layout 5

