

## TECHNICAL PROPOSAL

### POP2 ABD3058 SEKOLAH JENIS KEBANGSAAN (TAMIL) LADANG YAM SENG (D-SIDE)

Company Name	: SEGALA DELIMA (M) SDN BHD
Company Address	: No. 8, Jalan Ampang Baru 6B, Pusat Perdagangan Baru, 31350 Ipoh, Perak
Prepared By	: Mohamad Helmi
Date	: 02/12/2024



**Starting Point**

Site / Boundary Name	: Sekolah Jenis Kebangsaan (T) Ladang Yam Seng
District	: Semanggol
Postcode	: 34400
State	: Perak
GPS Coordinate	: 4.941918 , 100.700251
LRD	: A

**End Point**

Site / Boundary Name	: Taman Indah Jaya
Address	: Batu 8 Jalan Kerian
District	: Semanggol
Postcode	: 34400
State	: Perak
GPS Coordinate	: 4.949933 , 100.679247
LRD	: B

## 1.0 WORK SUMMARY

NO	PROPOSED DISTANCE AND METHOD	UNIT	QUANTITY
1	Horizontal Directional Drilling (HDD)	m	18
2	Carriage Way Open Trench(CW)	m	0
3	Grass Verge Open Trenching (GV)	m	0
4	Micro Trenching (MT)	m	0
Total			0

NO	OTHER INFORMATION	UNIT	QUANTITY
1	Installation of Short Span ADSS Fiber Cables	m	4041
2	Install New Pole	ea	0
3	Install New JRC7 Manhole	ea	2
4	Install GI Riser 100mm	ea	2
5	Install Fiber Distribution Point and Closure (Splicing, Termination and Testing)	ea	16
6	Estimated Time Required for Completion	days	60

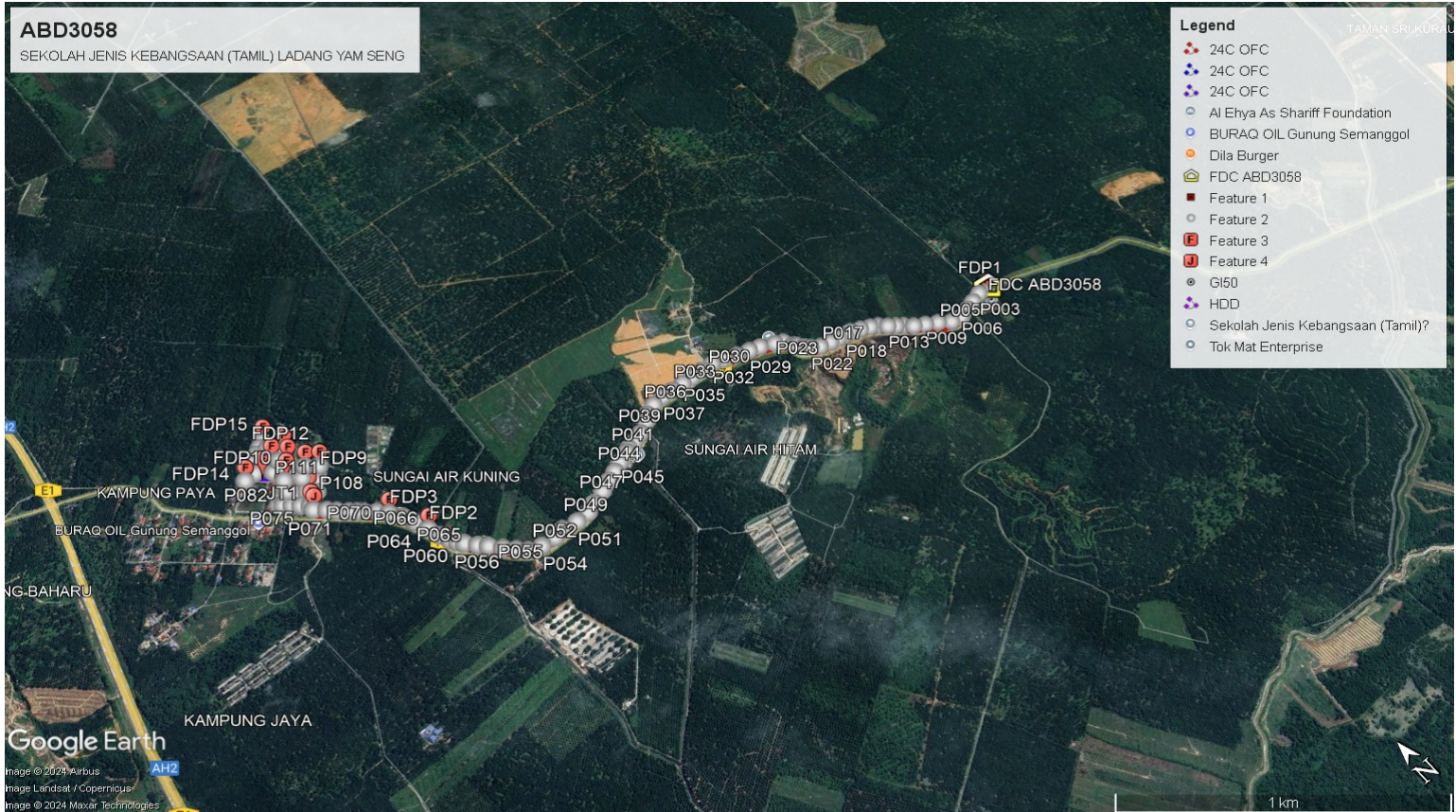
## 2.0 LOCAL AUTHORITY SUMMARY

Daerah Kerian

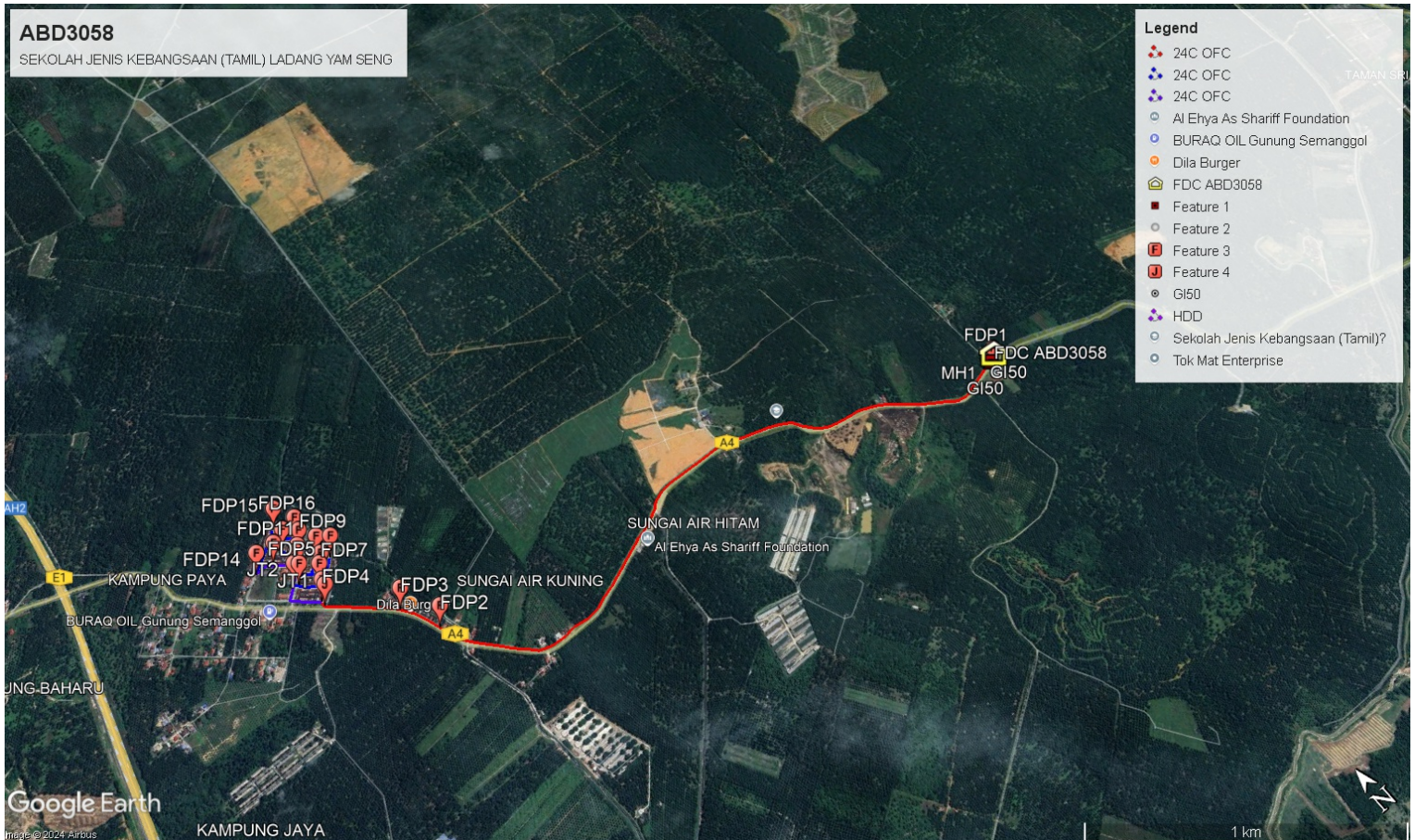
NO	ITEMS	Owner	Quantity	Distance (m)
1	HDD	JKR	1	18
		Majlis	-	-
		Estate / Private Land	-	-
2	New Pole	JKR	76	2857
		Majlis	38	1184
		Estate / Private Land	-	-
<b>Total Distance (m)</b>				<b>4059</b>

### 3.0 SITE PLAN (KMZ)

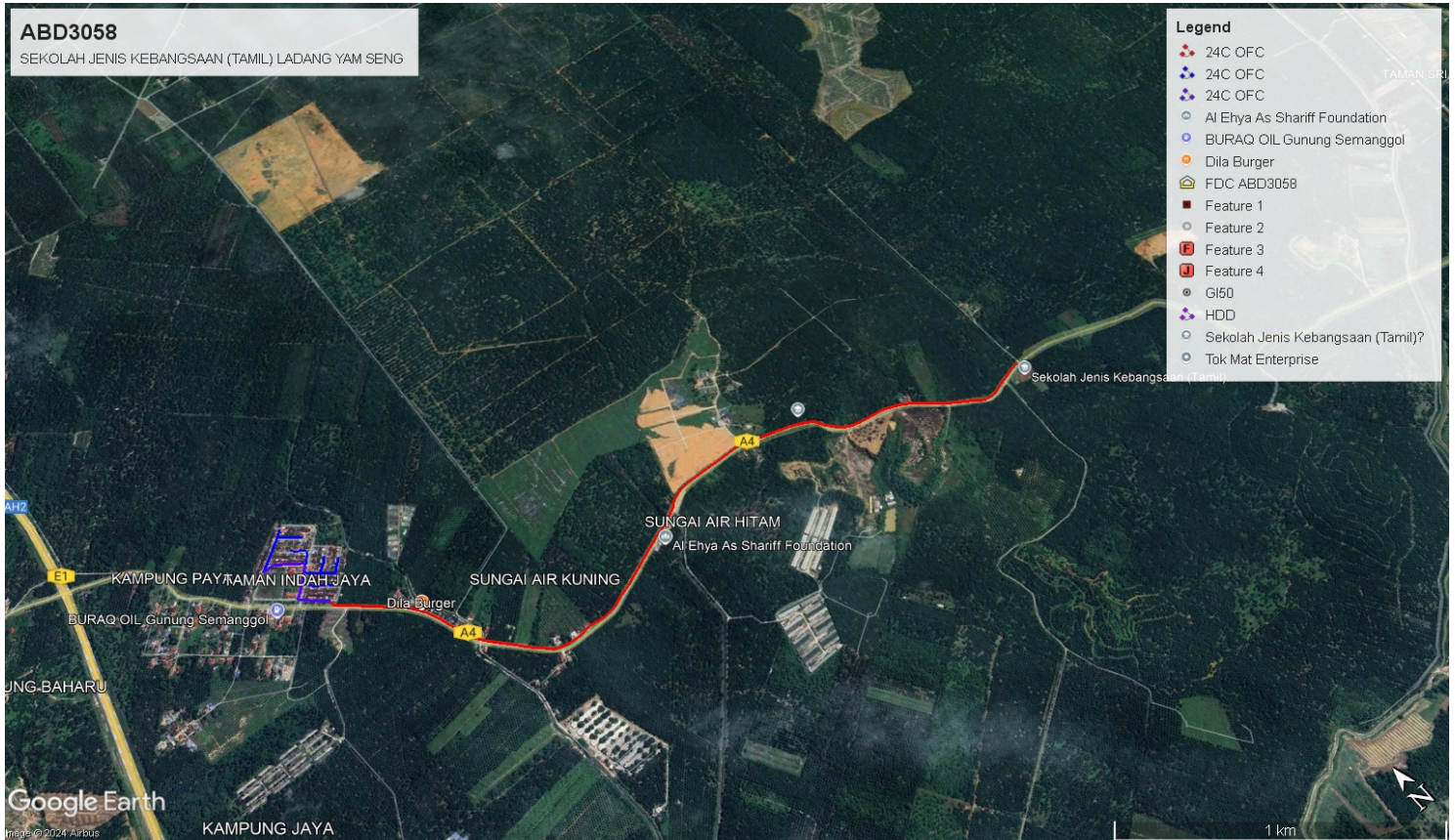
#### 3.1 Overview Site Area (Propose New Pole)



### 3.2 Proposed FDP and Closure



### 3.3 Site Plan - KMZ Routing (All Local Authority)



Red Colour - JKR

Road Blue Colour - Majlis Road

### 3.0 PROPOSED NEW MANHOLE

Proposed New Manhole Coordinate					
No.	Manhole Number	Distance (m)	Latitude	Longitude	Local Authority
1	MH01	18	4.941985	100.700219	JKR Daerah Kerian
2	MH02	18	4.942117	100.700275	JKR Daerah Kerian

### 4.0 PROPOSED NEW POLE

Existing Pole Coordinate					
No.	Pole Number	Distance (m)	Latitude	Longitude	Local Authority
1	P001	18.21	4.941968	100.700226	JKR Daerah Kerian
2	P002	25.76	4.942114	100.700252	JKR Daerah Kerian
3	P003	26.45	4.942090	100.700021	JKR Daerah Kerian
4	P004	47.74	4.941984	100.699606	JKR Daerah Kerian
5	P005	42.39	4.941884	100.699242	JKR Daerah Kerian
6	P006	48.28	4.941778	100.698821	JKR Daerah Kerian
7	P007	42.69	4.941849	100.698457	JKR Daerah Kerian
8	P008	40.18	4.942116	100.698098	JKR Daerah Kerian
9	P009	48.15	4.942337	100.697733	JKR Daerah Kerian
10	P010	43.63	4.942534	100.697396	JKR Daerah Kerian
11	P011	35.57	4.942763	100.697163	JKR Daerah Kerian
12	P012	38.66	4.942921	100.696964	JKR Daerah Kerian
13	P013	29.64	4.943091	100.696757	JKR Daerah Kerian
14	P014	35.39	4.943301	100.696522	JKR Daerah Kerian
15	P015	30.28	4.943445	100.696293	JKR Daerah Kerian
16	P016	38.27	4.943582	100.695982	JKR Daerah Kerian
17	P017	38.37	4.943723	100.695666	JKR Daerah Kerian
18	P018	23.97	4.943735	100.695448	JKR Daerah Kerian
19	P019	28.92	4.943783	100.695191	JKR Daerah Kerian
20	P020	34.89	4.943836	100.694888	JKR Daerah Kerian
21	P021	42.44	4.943933	100.694519	JKR Daerah Kerian
22	P022	34.09	4.944099	100.694260	JKR Daerah Kerian
23	P023	22.69	4.944249	100.694131	JKR Daerah Kerian
24	P024	27.25	4.944449	100.693989	JKR Daerah Kerian
25	P025	24.11	4.944549	100.693900	JKR Daerah Kerian
26	P026	37.47	4.944839	100.693729	JKR Daerah Kerian
27	P027	30.19	4.944975	100.693483	JKR Daerah Kerian
28	P028	56.29	4.945208	100.693039	JKR Daerah Kerian
29	P029	43.53	4.945330	100.692686	JKR Daerah Kerian
30	P030	46.13	4.945472	100.692275	JKR Daerah Kerian
31	P031	49.09	4.945623	100.691859	JKR Daerah Kerian
32	P032	46.04	4.945755	100.691472	JKR Daerah Kerian
33	P033	39.05	4.945763	100.691064	JKR Daerah Kerian

Existing Pole Coordinate					
No.	Pole Number	Distance (m)	Latitude	Longitude	Local Authority
34	P034	49.37	4.945769	100.690632	JKR Daerah Kerian
35	P035	41.93	4.945781	100.690258	JKR Daerah Kerian
36	P036	47.46	4.945782	100.689837	JKR Daerah Kerian
37	P037	45.80	4.945805	100.689435	JKR Daerah Kerian
38	P038	45.16	4.945763	100.689036	JKR Daerah Kerian
39	P039	47.06	4.945614	100.688644	JKR Daerah Kerian
40	P040	35.98	4.945426	100.688465	JKR Daerah Kerian
41	P041	44.08	4.945202	100.688042	JKR Daerah Kerian
42	P042	43.89	4.945072	100.687673	JKR Daerah Kerian
43	P043	30.31	4.945008	100.687409	JKR Daerah Kerian
44	P044	27.04	4.944933	100.687279	JKR Daerah Kerian
45	P045	46.56	4.944781	100.686890	JKR Daerah Kerian
46	P046	42.11	4.944617	100.686554	JKR Daerah Kerian
47	P047	41.94	4.944476	100.686210	JKR Daerah Kerian
48	P048	46.88	4.944306	100.685829	JKR Daerah Kerian
49	P049	46.53	4.944141	100.685351	JKR Daerah Kerian
50	P050	39.89	4.943993	100.685030	JKR Daerah Kerian
51	P051	40.46	4.943949	100.684580	JKR Daerah Kerian
52	P052	45.91	4.944033	100.684095	JKR Daerah Kerian
53	P053	39.22	4.943960	100.683758	JKR Daerah Kerian
54	P054	43.31	4.943983	100.683288	JKR Daerah Kerian
55	P055	47.82	4.944126	100.682888	JKR Daerah Kerian
56	P056	31.34	4.944388	100.682642	JKR Daerah Kerian
57	P057	45.15	4.944674	100.682369	JKR Daerah Kerian
58	P058	49.76	4.945012	100.682090	JKR Daerah Kerian
59	P059	36.66	4.945254	100.681867	JKR Daerah Kerian
60	P060	44.96	4.945548	100.681605	JKR Daerah Kerian
61	P061	33.21	4.945716	100.681480	JKR Daerah Kerian
62	P062	26.52	4.945915	100.681348	JKR Daerah Kerian
63	P063	43.30	4.946263	100.681205	JKR Daerah Kerian
64	P064	48.10	4.946673	100.681062	JKR Daerah Kerian
65	P065	40.64	4.947107	100.680911	JKR Daerah Kerian
66	P066	49.71	4.947515	100.680739	JKR Daerah Kerian
67	P067	41.42	4.947903	100.680488	JKR Daerah Kerian
68	P068	42.20	4.948180	100.680237	JKR Daerah Kerian
69	P069	44.24	4.948437	100.679942	JKR Daerah Kerian
70	P070	22.03	4.948573	100.679789	JKR Daerah Kerian
71	P071	26.80	4.948731	100.679603	JKR Daerah Kerian
72	P072	39.86	4.948972	100.679348	JKR Daerah Kerian
73	P073	33.32	4.949186	100.679133	JKR Daerah Kerian
74	P074	47.12	4.949464	100.678826	JKR Daerah Kerian
75	P075	32.33	4.949635	100.678827	JKR Daerah Kerian

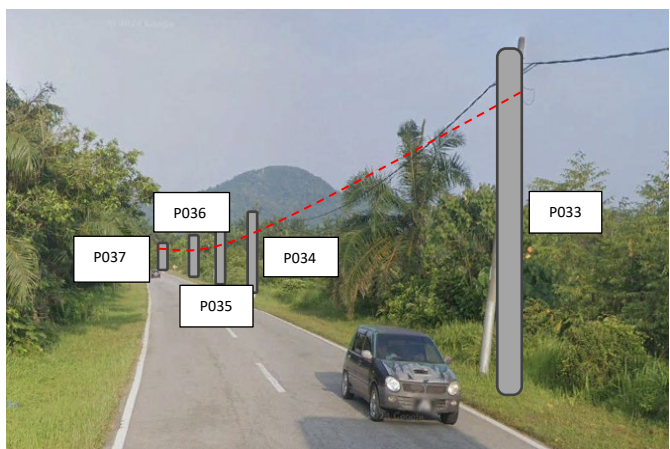
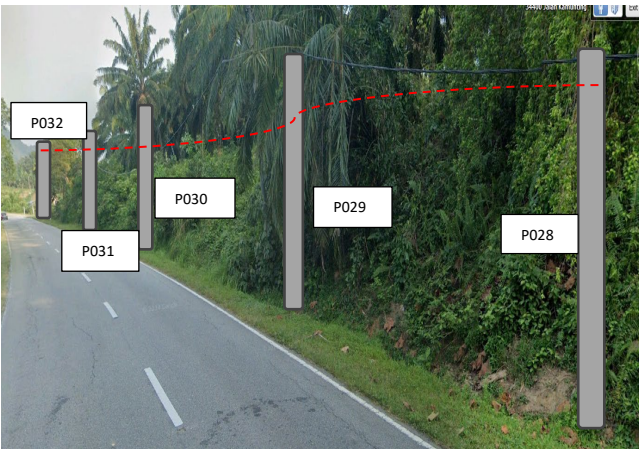
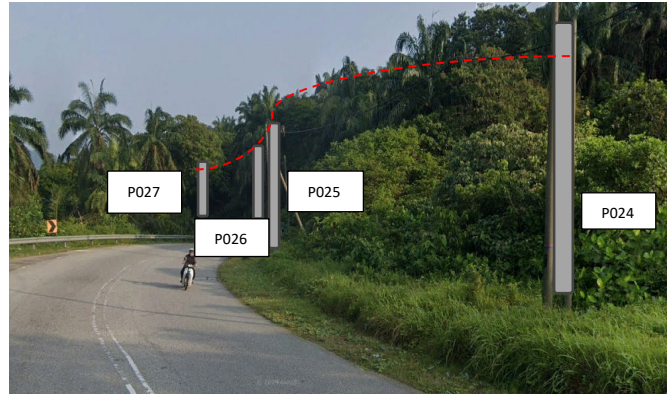
**Existing Pole Coordinate**

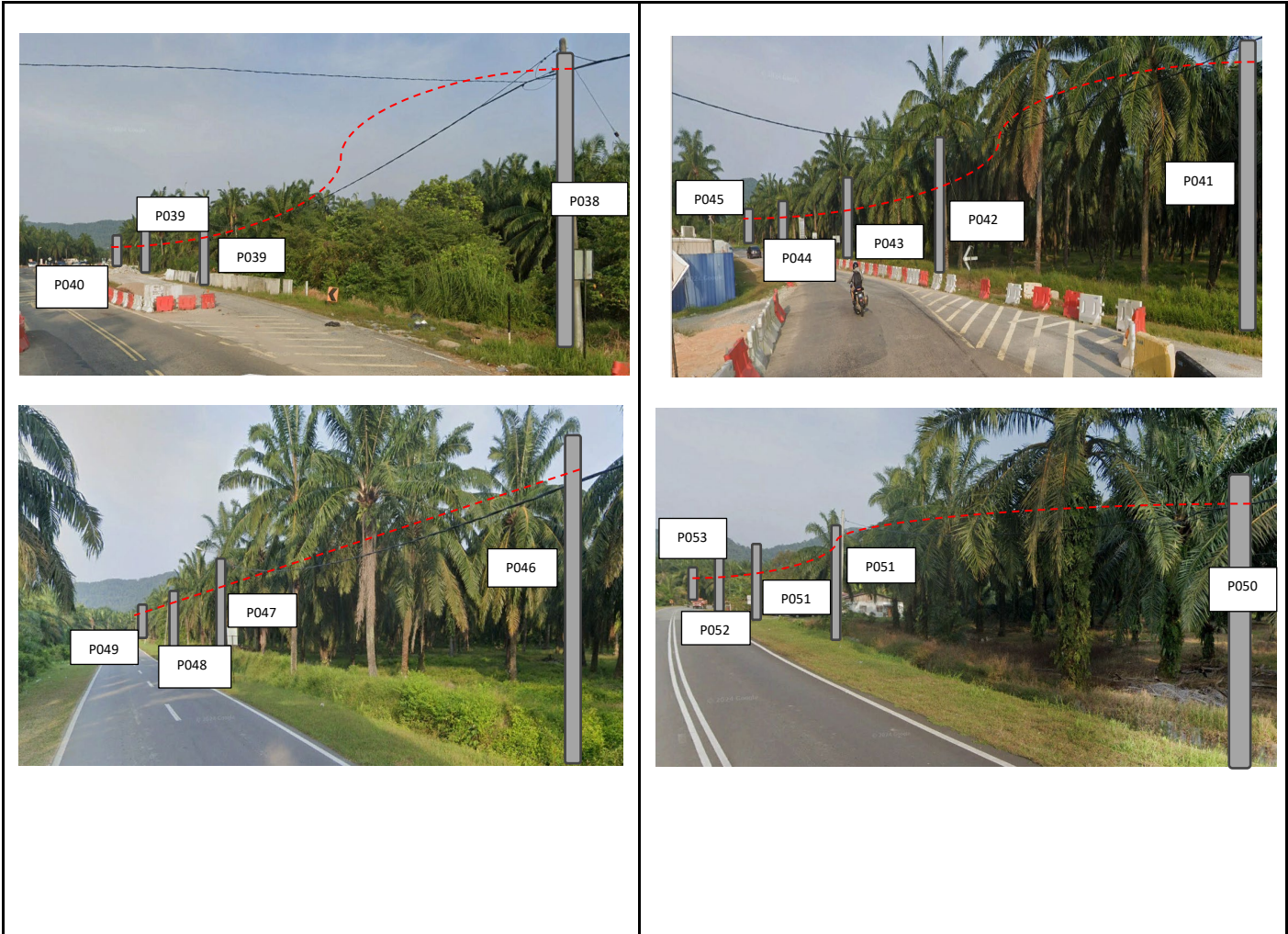
No.	Pole Number	Distance (m)	Latitude	Longitude	Local Authority
76	P076	28.57	4.949833	100.678618	Majlis Daerah Kerian
M	P077	30.21	4.949998	100.678421	Majlis Daerah Kerian
78	P078	30.43	4.950191	100.678222	Majlis Daerah Kerian
79	P079	35.84	4.950282	100.678116	Majlis Daerah Kerian
80	P080	33.54	4.950425	100.678268	Majlis Daerah Kerian
81	P081	34.34	4.950650	100.678479	Majlis Daerah Kerian
82	P082	40.86	4.950939	100.678707	Majlis Daerah Kerian
83	P083	44.21	4.951095	100.678856	Majlis Daerah Kerian
84	P084	26.80	4.951198	100.678966	Majlis Daerah Kerian
85	P085	31.82	4.951416	100.679149	Majlis Daerah Kerian
86	P086	12.37	4.951526	100.679159	Majlis Daerah Kerian
87	P087	28.04	4.951678	100.678960	Majlis Daerah Kerian
88	P088	26.45	4.951839	100.678785	Majlis Daerah Kerian
89	P089	28.78	4.951993	100.678580	Majlis Daerah Kerian
90	P090	43.78	4.951191	100.678873	Majlis Daerah Kerian
91	P091	39.53	4.951409	100.678606	Majlis Daerah Kerian
92	P092	40.26	4.951750	100.678177	Majlis Daerah Kerian
93	P093	30.35	4.951701	100.677797	Majlis Daerah Kerian
94	P094	35.11	4.951929	100.678065	Majlis Daerah Kerian
95	P095	35.88	4.952146	100.678343	Majlis Daerah Kerian
96	P096	31.94	4.952322	100.678570	Majlis Daerah Kerian
97	P097	26.70	4.952469	100.678764	Majlis Daerah Kerian
98	P098	26.42	4.952619	100.678945	Majlis Daerah Kerian
99	P099	29.37	4.952271	100.678927	Majlis Daerah Kerian
100	P100	25.55	4.952119	100.679120	Majlis Daerah Kerian
101	P101	35.93	4.951957	100.679307	Majlis Daerah Kerian
102	P102	30.46	4.950843	100.678785	Majlis Daerah Kerian
103	P103	28.04	4.950599	100.679056	Majlis Daerah Kerian
104	P104	29.54	4.950425	100.679268	Majlis Daerah Kerian
105	P105	27.33	4.950288	100.679438	Majlis Daerah Kerian
106	P106	32.16	4.950373	100.679478	Majlis Daerah Kerian
107	P107	31.82	4.950527	100.679635	Majlis Daerah Kerian
108	P108	36.87	4.950700	100.679791	Majlis Daerah Kerian
109	P109	28.77	4.950662	100.679170	Majlis Daerah Kerian
110	P110	34.58	4.950821	100.679326	Majlis Daerah Kerian
111	P111	30.80	4.950988	100.679462	Majlis Daerah Kerian
112	P112	24.58	4.950542	100.678572	Majlis Daerah Kerian
113	P113	26.03	4.950335	100.678742	Majlis Daerah Kerian
114	P114	32.96	4.950141	100.679028	Majlis Daerah Kerian
115	P115		4.949933	100.679247	Majlis Daerah Kerian

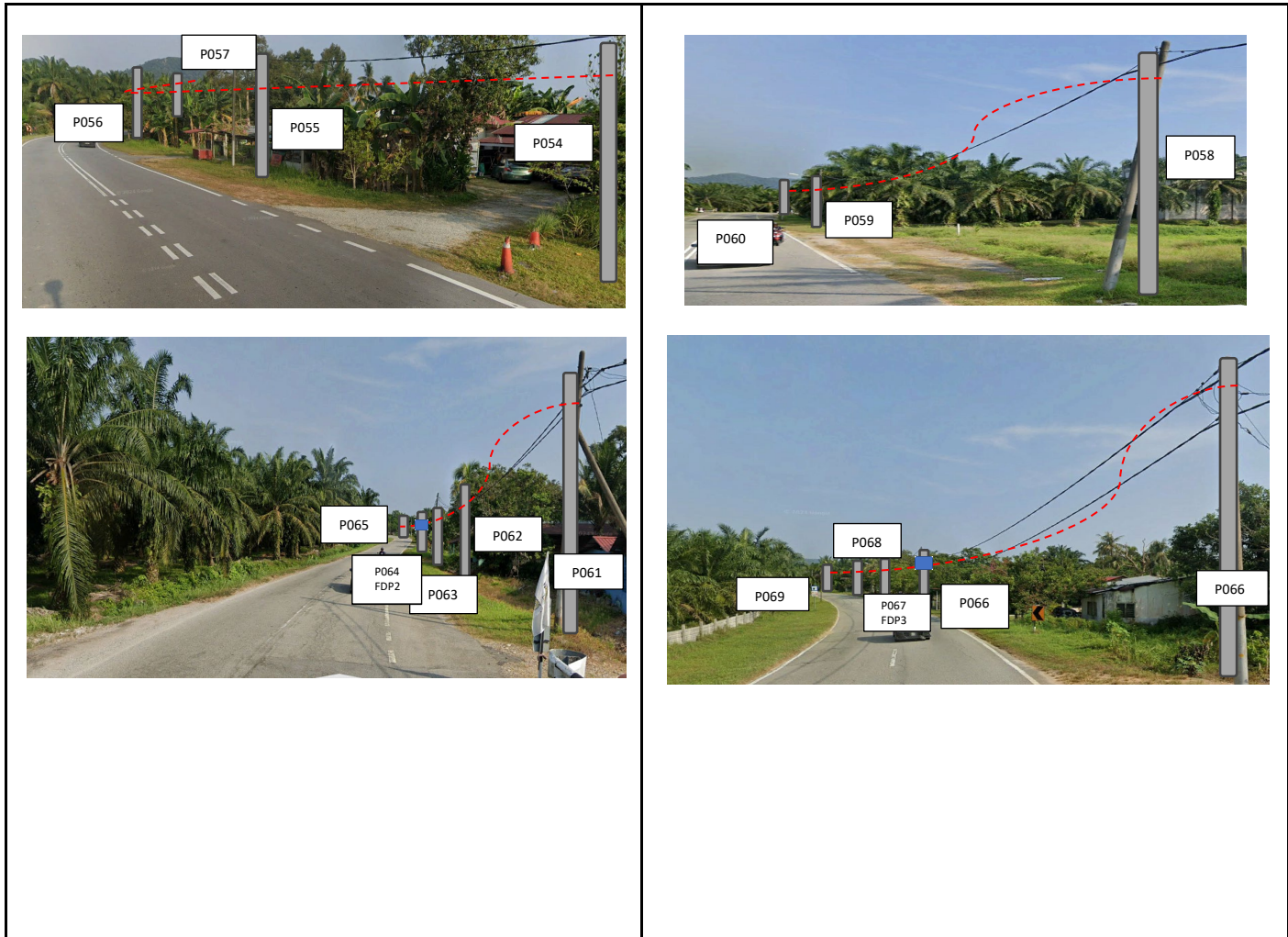
**5.0 SITE PHOTOS - PROPOSED HDD AND NEW MANHOLE (N/A)**

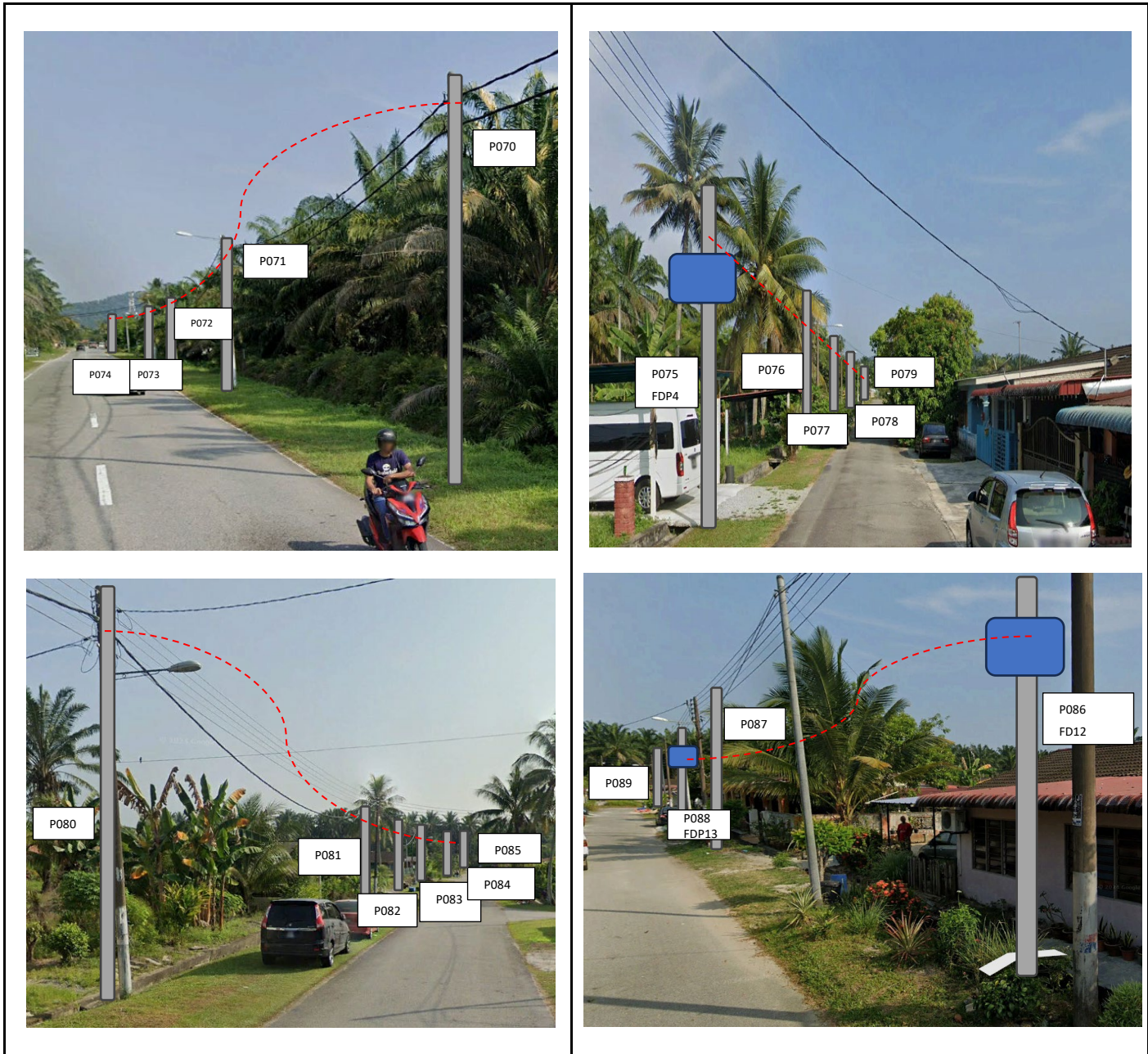
**6.0 SITE PHOTOS - PROPOSED NEW POLE**

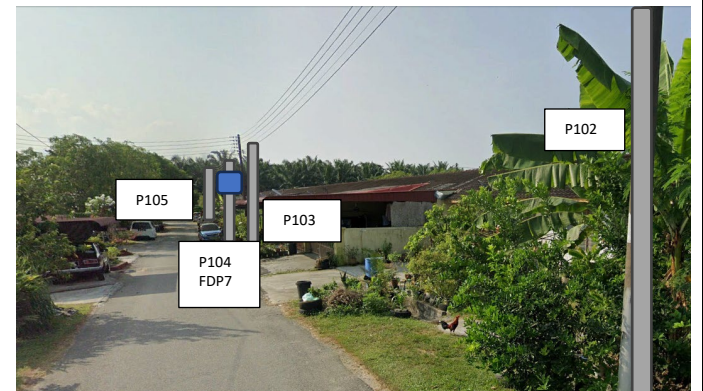
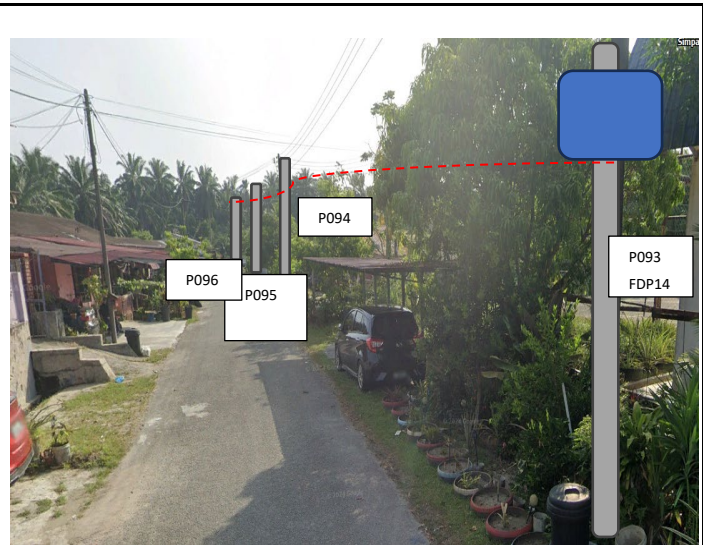
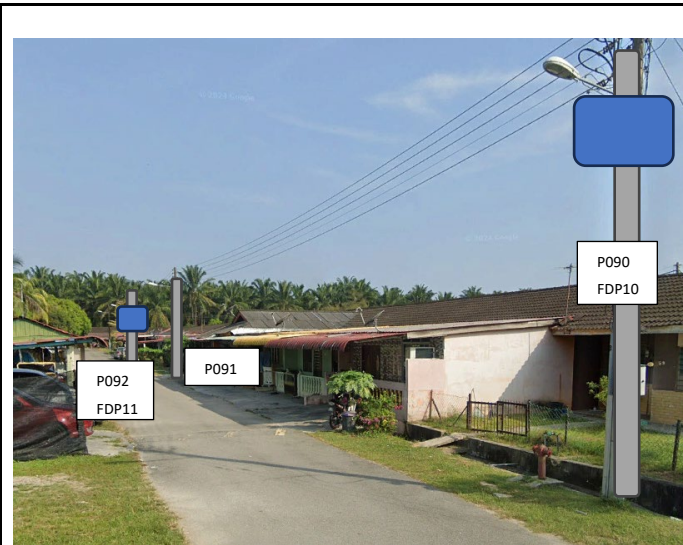


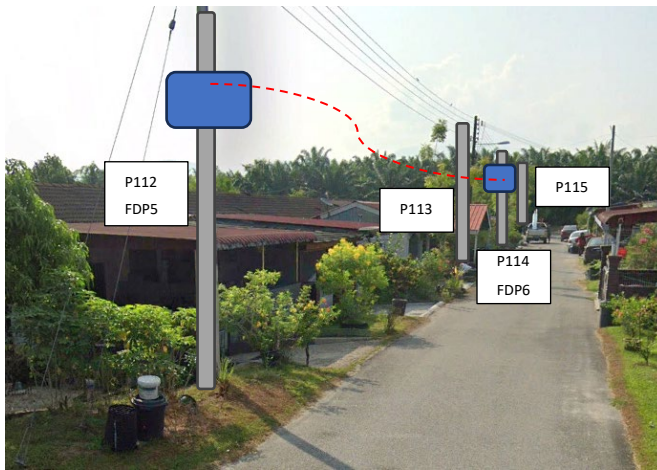
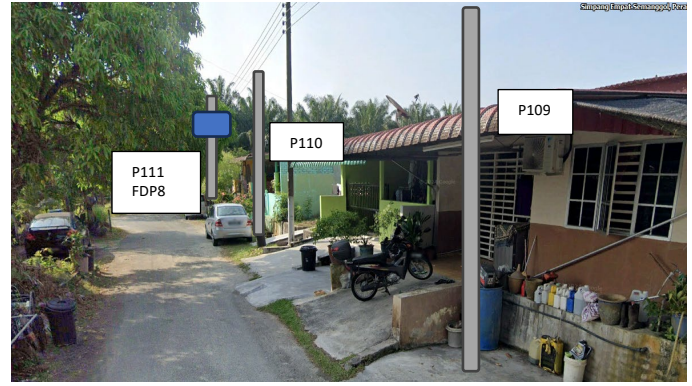
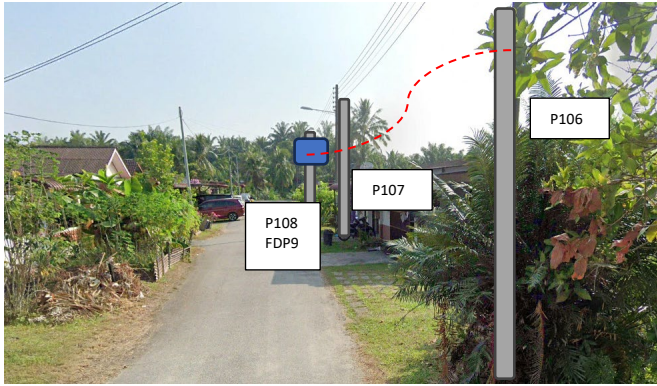












'ROJEK PENYEDIAAN DAN PENYELENGGARAAN POINT OF PRESENCE POP) FASA 2: HAB INFRASTRUKTUR GENTIAN OPTIK BERHAMPIRAN DENGAN SEKOLAH, KAWASAN PERINDUSTRIAN, PREMIS KERAJAAN DAN KOMUNITI SEKITARNYA OLEH KEMENTERIAN KOMUNIKASI MALAYSIA - ZON UTARA (KKMM.400-11/17/132(1)






NO	LOCAL COUNCIL / AUTHORITY	REMARK
1	Majlis Daerah Kerian	1184m
2	JKR Daerah Kerian	2875m



12C FOC	Installed 1:4 / 1:8 / 1:32 splitter	Installed Pole (9m)	Suspension	B30	New Manhole (PIT)	Micro-Trenching (Meter)	MH1	MH NO.
24C FOC	4.041m Installed Patch Cord	Installed Pole (7.5M)	Tension	C7	New Manhole(JRC7)	Temporary Infra (Meter)	TKS-1	Existing TNB Pole NO.
48C FOC	FDC	Installed Pole (6.7M)	Pole Ring		FDP Boundary	Loop / Coil (Meter)	P001	New Pole NO.
96C FOC	Closure	Existing TNB Pole	115	8DP	FDP with (1:8) splitter	16	CL01	Closure NO.
144C FOC	Existing Closure	3	Installed Riser	2	Existing Manhole		DP1	FDP NO.

KEY PLAN:	PROJECT OWNER:  KEMENTERIAN KOMUNIKASI DAN DIGITAL	MAIN CONTRACTOR:  PRIVASAT	SUB-CONTRACTOR:  SEGALA DELIMA (M) SDN. BHD.	PROJECT TITLE: CONTRACT FOR SURVEY TECHNICAL PROPOSAL AND WAYLEAVE & PERMITTING APPROVAL-POP 2 PROJECT	DRAWING TITLE: ABD3058 SEKOLAH JENIS KEBANGSAAN (TAMIL) LADANG YAM SENG	PROJECT PHASE:	Design By : (Contractor)	Date :
							Drawn By : (Contractor)	Scale : 1 : 5000
							Checked By : (Contractor)	Job Number :
							DRAWING NUMBER :	Sheet : /
								Size :

ACTUAL HOMEPASS :

