

## POP2 E/SIDE POI BSBU – Technical Proposal

<b>Company Name</b>	:	<b>AZNIK ENT SDN BHD</b>
<b>Company Address</b>	:	<b>TINGKAT ATAS PUSAT PERNIAGAAN PUTRA LOT 205, JALAN PUTERA, 9, JALAN KELANG LAMA, 09000 KULIM, KEDAH</b>
<b>Prepared By</b>	:	<b>KHAIRONIZAM BIN ABDOL ROKIB</b>
<b>Date</b>	:	<b>01/07/2024</b>



**POINT A**

**POINT B**

### Starting Point

Site / Boundary Name	:	Bukit Merah
Address	:	Sekolah Menengah Kebangsaan Agama Kerian
District	:	Kampung Baharu Pondok Tanjong
Postcode	:	34400
State	:	Perak
GPS Coordinate	:	4°58'9.71"N, 100°40'3.72"E
LRD	:	A

### End Point

Site / Boundary Name	:	Bukit Merah
Address	:	Kampung Gunong Semanggol
District	:	Simpang Empat Semanggol
Postcode	:	34400
State	:	Perak
GPS Coordinate	:	4°57'40.31"N, 100°39'8.21"E
LRD	:	B

### Work Summary

No	Proposed Distance and Method	Unit	Qty
1	Horizontal Directional Drilling (HDD)	m	-
2	Carriage Way Open trench (CW)	m	-
3	Grass Verge Open Trenching (GV)	m	-
4	Micro trenching (MT)	m	-
	Total		-

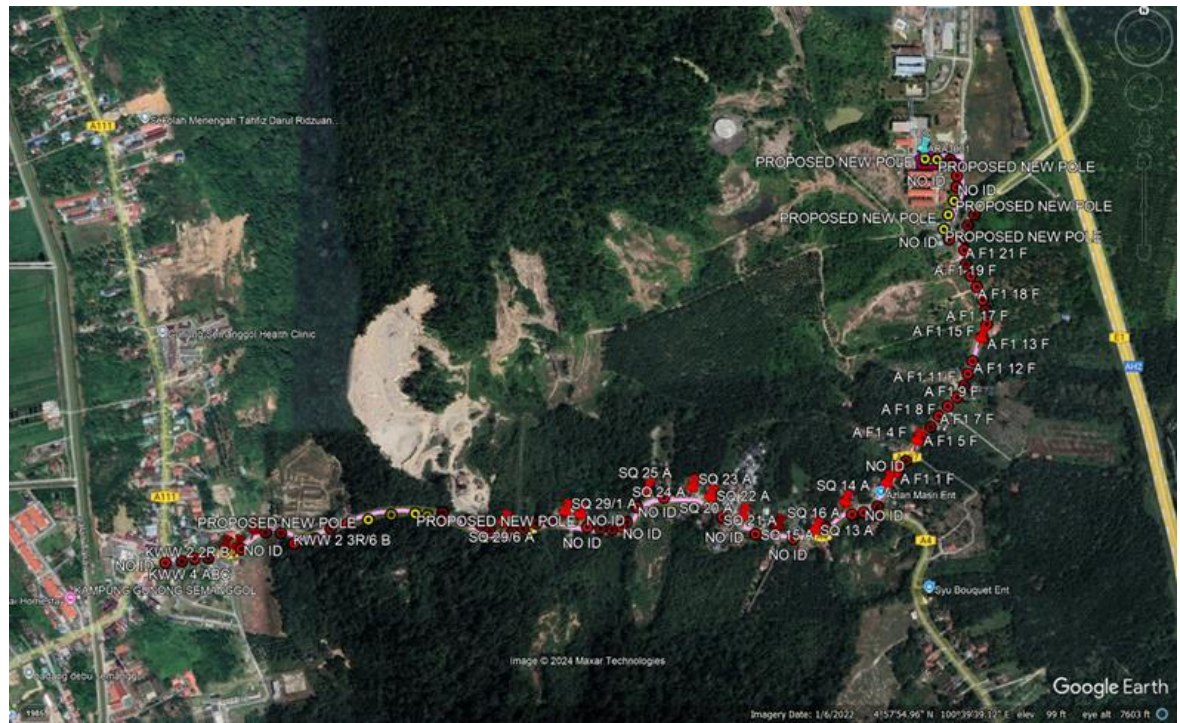
	Other Information	Unit	Qty
1	Proposed Manhole	EA	-
2	Proposed Pole	EA	9
3	Joint Closure	EA	-
4	Estimated time required for completion	days	9

### Local Authority Summary

#### 1. Daerah Kerian

Bil	Items	Owner	Quantity	Distance
1	HDD	JKR	-	-
		Majlis	-	-
		Estate / Private Land	-	-
2	New Pole	JKR	9pc	34m
		Majlis	-	-
		Estate / Private Land	-	-
3	Existing TNB Pole	JKR	78pc	2808m
		Majlis	-	-
		Estate / Private Land	-	-
Total				2842m

Site Plan – KMZ (Overview site area)



**Site Plan – KMZ Routing (All Local Authority)**

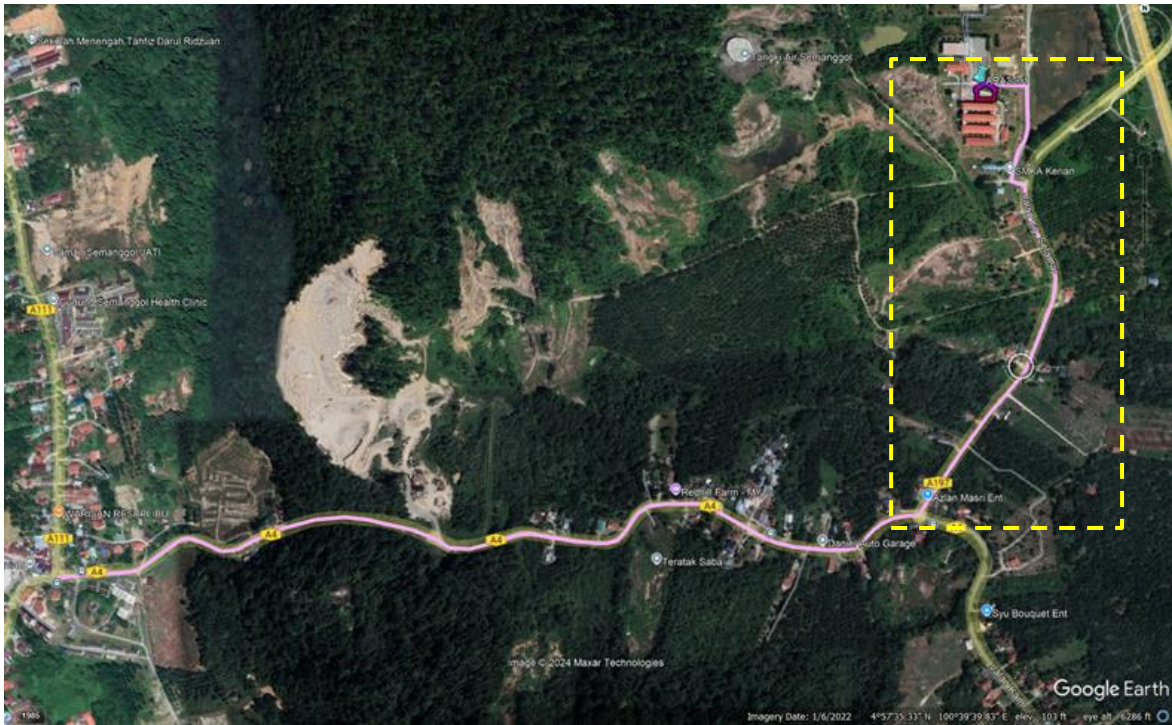
**ZONE A :**



**Purple – JKR**

**Site Plan – KMZ Routing (All site area)**

**ZONE A : Route 1**





**Route 2**





**Site Plan – KMZ Routing (Prop new Pole)**



**Site Plan – KMZ Routing (Prop new FDP)**

**FDP P01: SEKOLAH MENENGAH KEBANGSAAN AGAMA KERIAN**



**Figure 4: FDP04 (4°58'9.71"N, 100°40'3.72"E)**

**Prop FDP Lat & Long Table**

<b>PROPOSED FDP COORDINATE</b>		
<b>FDP NUMBER</b>	<b>LATITUDE</b>	<b>LONGITUDE</b>
Propose FDP01	4°58'9.71"N	100°40'3.72"E

**Prop New Pole Lat & Long Table**

PROPOSED POLE COORDINATE		
POLE NUMBER	LATITUDE	LONGITUDE
NEW POLE	4°58'4.64"N	100°40'5.20"E
NEW POLE	4°58'5.70"N	100°40'5.51"E
NEW POLE	4°58'6.72"N	100°40'5.95"E
NEW POLE	4°58'9.70"N	100°40'4.65"E
NEW POLE	4°58'9.71"N	100°40'3.72"E
NEW POLE	4°57'43.97"N	100°39'27.64"E
NEW POLE	4°57'44.11"N	100°39'26.78"E
NEW POLE	4°57'44.03"N	100°39'25.05"E
NEW POLE	4°57'43.64"N	100°39'23.36"E

**Overall Manhole & Pole (Propose New & Existing)**

NO	POLE ID	DISTANCE	LATITUDE	LONGITUDE	NO
1	NO ID	30	4°58'3.93"N	100°40'5.61"E	JKR
2	NEW POLE	25	4°58'4.64"N	100°40'5.20"E	JKR
3	NEW POLE	33	4°58'5.70"N	100°40'5.51"E	JKR
4	NEW POLE	30	4°58'6.72"N	100°40'5.51"E	JKR
5	NO ID	30	4°58'7.73"N	100°40'6.13"E	JKR
6	NO ID	30	4°58'8.55"N	100°40'6.17"E	JKR
7	NO ID	30	4°58'9.33"N	100°40'6.13"E	JKR
8	NO ID	30	4°58'9.71"N	100°40'5.67"E	JKR
9	NEW POLE	30	4°58'9.70"N	100°40'4.65"E	JKR
10	NEW POLE	30	4°58'9.71"N	100°40'3.72"E	JKR
11	A F1 21 F	32	4°58'3.15"N	100°40'6.75"E	JKR
12	A F1 20 F	29	4°58'2.14"N	100°40'6.84"E	JKR
13	A F1 19 F	28	4°58'1.27"N	100°40'7.21"E	JKR
14	A F1 18 F	32	4°58'0.47"N	100°40'7.63"E	JKR
15	A F1 17 F	25	4°57'59.51"N	100°40'8.08"E	JKR
16	A F1 16 F	30	4°57'58.75"N	100°40'8.31"E	JKR
17	A F1 15 F	31	4°57'57.77"N	100°40'8.42"E	JKR
18	A F1 14 F	30	4°57'56.84"N	100°40'8.09"E	JKR
19	A F1 13 F	30	4°57'55.95"N	100°40'7.71"E	JKR
20	A F1 12 F	31	4°57'55.05"N	100°40'7.33"E	JKR
21	A F1 11 F	29	4°57'54.13"N	100°40'6.99"E	JKR
22	A F1 10 F	30	4°57'53.25"N	100°40'6.72"E	JKR
23	A F1 9 F	30	4°57'52.43"N	100°40'6.21"E	JKR
24	A F1 8 F	30	4°57'51.77"N	100°40'5.51"E	JKR
25	A F1 7 F	31	4°57'51.05"N	100°40'4.87"E	JKR
26	A F1 6 F	30	4°57'50.25"N	100°40'4.29"E	JKR
27	A F1 5 F	37	4°57'49.46"N	100°40'3.71"E	JKR
28	A F1 4 F	28	4°57'48.48"N	100°40'3.04"E	JKR
29	A F1 3 F	30	4°57'47.74"N	100°40'2.50"E	JKR
30	A F1 2 F	32	4°57'46.97"N	100°40'1.93"E	JKR
31	A F1 1 F	27	4°57'46.11"N	100°40'1.35"E	JKR
32	NO ID	33	4°57'45.41"N	100°40'0.80"E	JKR
33	NO ID	18	4°57'44.45"N	100°40'0.37"E	JKR
34	NO ID	30	4°57'43.86"N	100°40'0.30"E	JKR
35	NO ID	24	4°57'44.02"N	100°39'59.36"E	JKR
36	SQ 13 A	26	4°57'43.89"N	100°39'58.58"E	JKR

37	SQ 14 A	44	4°57'43.99"N	100°39'57.72"E	JKR
38	SQ 15 A	42	4°57'42.99"N	100°39'56.68"E	JKR
39	SQ 16 A	44	4°57'41.99"N	100°39'55.56"E	JKR
40	NO ID	43	4°57'42.09"N	100°39'54.22"E	JKR
41	SQ 18 A	43	4°57'42.25"N	100°39'52.81"E	JKR
42	NO ID	41	4°57'42.44"N	100°39'51.44"E	JKR
43	SQ 20 A	43	4°57'42.99"N	100°39'50.23"E	JKR
44	SQ 21 A	42	4°57'43.68"N	100°39'49.02"E	JKR
45	SQ 22 A	46	4°57'44.38"N	100°39'47.88"E	JKR
46	SQ 23 A	47	4°57'45.09"N	100°39'46.56"E	JKR
47	SQ 24 A	46	4°57'45.11"N	100°39'44.77"E	JKR
48	SQ 25 A	21	4°57'44.92"N	100°39'43.25"E	JKR
49	NO ID	42	4°57'44.43"N	100°39'42.78"E	JKR
50	NO ID	16	4°57'43.32"N	100°39'42.04"E	JKR
51	NO ID	23	4°57'43.00"N	100°39'41.67"E	JKR
52	NO ID	26	4°57'42.76"N	100°39'40.96"E	JKR
53	NO ID	30	4°57'42.84"N	100°39'40.12"E	JKR
54	NO ID	25	4°57'42.98"N	100°39'39.16"E	JKR
55	NO ID	35	4°57'43.10"N	100°39'38.36"E	JKR
56	SQ 29/1 A	28	4°57'43.30"N	100°39'37.27"E	JKR
57	SQ 29/2 A	30	4°57'43.43"N	100°39'36.39"E	JKR
58	NO ID	31	4°57'43.25"N	100°39'35.44"E	JKR
59	SQ 29/4 A	25	4°57'42.89"N	100°39'34.49"E	JKR
60	SQ 29/5 A	30	4°57'42.66"N	100°39'33.71"E	JKR
61	SQ 29/6 A	24	4°57'42.61"N	100°39'32.79"E	JKR
62	SQ 29/7 A	24	4°57'42.79"N	100°39'32.05"E	JKR
63	SQ 29/8 A	30	4°57'43.20"N	100°39'31.41"E	JKR
64	NO ID	59	4°57'43.54"N	100°39'30.50"E	JKR
65	NO ID	13	4°57'44.14"N	100°39'28.72"E	JKR
66	NO ID	30	4°57'43.73"N	100°39'28.57"E	JKR
67	NEW POLE	28	4°57'43.97"N	100°39'27.64"E	JKR
68	NEW POLE	57	4°57'44.11"N	100°39'26.78"E	JKR
69	NEW POLE	28	4°57'44.03"N	100°39'25.05"E	JKR
70	NEW POLE	20	4°57'43.64"N	4°57'43.64"N	JKR
71	KWW 2 3R/6 B	40	4°57'43.29"N	100°39'21.76"E	JKR
72	NO ID	42	4°57'42.93"N	100°39'20.50"E	JKR
73	NO ID	48	4°57'42.19"N	100°39'19.38"E	JKR
74	NO ID	39	4°57'41.85"N	100°39'17.86"E	JKR
75	NO ID	35	4°57'42.57"N	100°39'16.81"E	JKR
76	KWW 2 3R/1 B	41	4°57'42.60"N	100°39'15.70"E	JKR

77	KWW 2 3R B	29	4°57'42.01"N	100°39'14.54"E	JKR
78	KWW 2 2R B	27	4°57'41.36"N	100°39'13.85"E	JKR
79	KWW 2 1R B	30	4°57'40.72"N	100°39'13.25"E	JKR
80	KWW 2 ABC	31	4°57'40.68"N	100°39'12.33"E	JKR
81	KWW 3 ABC	31	4°57'40.66"N	100°39'11.36"E	JKR
82	KWW 4 ABC	31	4°57'40.63"N	100°39'10.37"E	JKR
83	KWW 5 ABC	38	4°57'40.41"N	100°39'9.41"E	JKR
84	NO ID	30	4°57'40.31"N	100°39'8.21"E	JKR

Site Photos – Proposed New Pole



Site Photos – Existing TNB Pole (Route)

SIMPANG EMPAT SEMANGGOL – BUKIT MERAH



SIMPANG EMPAT SEMANGGOL – BUKIT MERAH



SIMPANG EMPAT SEMANGGOL – BUKIT MERAH



SIMPANG EMPAT SEMANGGOL – BUKIT MERAH



### 3rd Parties Dependencies

No.	Local Council/ Authority	Remark
1	JKR Kerian	
2		
3		
4		
5		
6		