

## TECHNICAL PROPOSAL

### POP2 ABCB008 SEKOLAH JENIS KEBANGSAAN CINA HUA HSIA ( D-SIDE )

**Company Name** : T&H PANJI EMPIRE SDN BHD  
**Company Address** : 39A Jalan Jelapang 5, Pusat Komersial Jelapang, 30020 Ipoh, Perak Darul Ridzuan.  
**Prepared By** : Mat Salleh bin Mat Zain  
**Date** : 11/12/2024



Point A



Point B

#### Starting Point

**Site / Boundary Name** : Bagan Datuk  
**Address** : SJK CINA HUA HSIA  
**District** : Teluk Intan  
**Postcode** : 36100  
**State** : Perak  
**GPS Coordinate** : 3.989622, 100.784752  
**LRD** : A

#### End Point

**Site / Boundary Name** : Bagan Datuk  
**Address** : Jalan Syahbandar Bagan Datuk  
**District** : Teluk Intan  
**Postcode** : 36100  
**State** : Perak  
**GPS Coordinate** : 3.991865, 100.784733  
**LRD** : B



PROJEK PENYEDIAAN DAN PENYELENGGARAAN POINT OF PRESENT (POP) FASA 2: HAB INFRASTRUKTUR GENTIAN OPTIK BERHAMPIRAN DENGAN SEKOLAH, KAWASAN PERINDUSTRIAN, PREMIS KERAJAAN DAN KOMUNITI SEKITARNYA OLEH KEMENTERIAN KOMUNIKASI MALAYSIA - ZON UTARA (KKMM.400-11/17/132(1))



## 1.0 WORK SUMMARY

NO	PROPOSED DISTANCE AND METHOD	UNIT	QUANTITY
1	Horizontal Directional Drilling (HDD)	m	0
2	Carriage Way Open Trench (CW)	m	0
3	Grass Verge Open Trenching (GV)	m	0
4	Micro Trenching (MT)	m	0
Total			0

NO	OTHER INFORMATION	UNIT	QUANTITY
1	Installation of Short Span ADSS Fiber Cables	m	2800
2	Install New Pole	ea	73
3	Install New JRC7 Manhole	ea	0
4	Install GI Riser 100mm	ea	0
5	Install Fiber Distribution Point	ea	21
6	Closure (Splicing, Termination and Testing)	ea	4



PROJEK PENYEDIAAN DAN PENYELENGGARAAN POINT OF PRESENT (POP) FASA 2: HAB INFRASTRUKTUR GENTIAN OPTIK BERHAMPIRAN DENGAN SEKOLAH, KAWASAN PERINDUSTRIAN, PREMIS KERAJAAN DAN KOMUNITI SEKITARNYA OLEH KEMENTERIAN KOMUNIKASI MALAYSIA - ZON UTARA (KKMM.400-11/17/132(1))



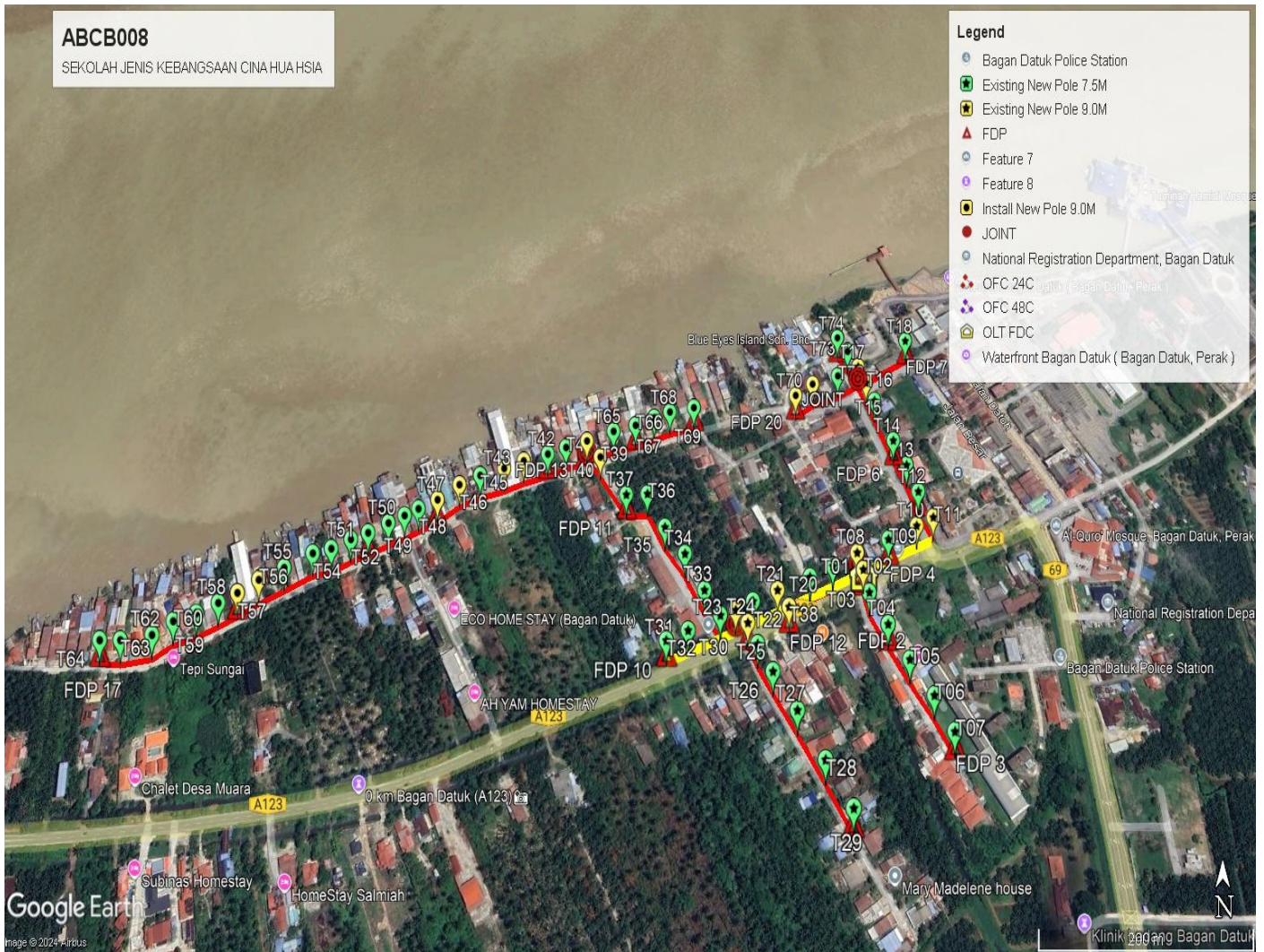
## 2.0 LOCAL AUTHORITY SUMMARY

Majlis Perbandaran Teluk Intan

NO	ITEMS	Owner	Quantity	Distance (m)
1	HDD	JKR	-	-
		Majlis	-	-
		Estate / Private Land	-	-
2	New Pole	JKR	13	310
		Majlis	60	2490
		Estate / Private Land	-	-
<b>Total Distance (m)</b>				<b>2800</b>

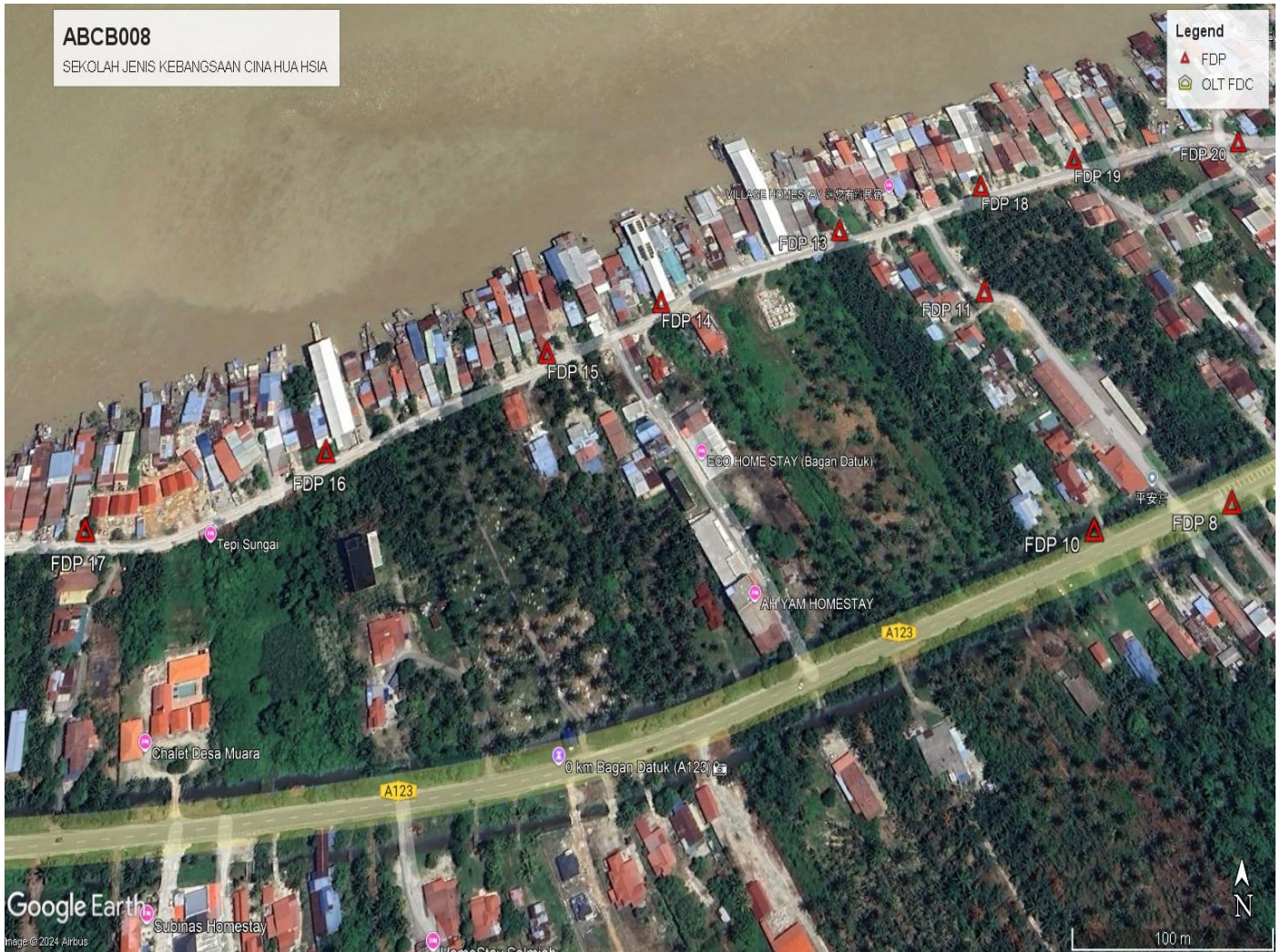
### 3.0 SITE PLAN (KMZ)

#### 3.1 Overview Site Area

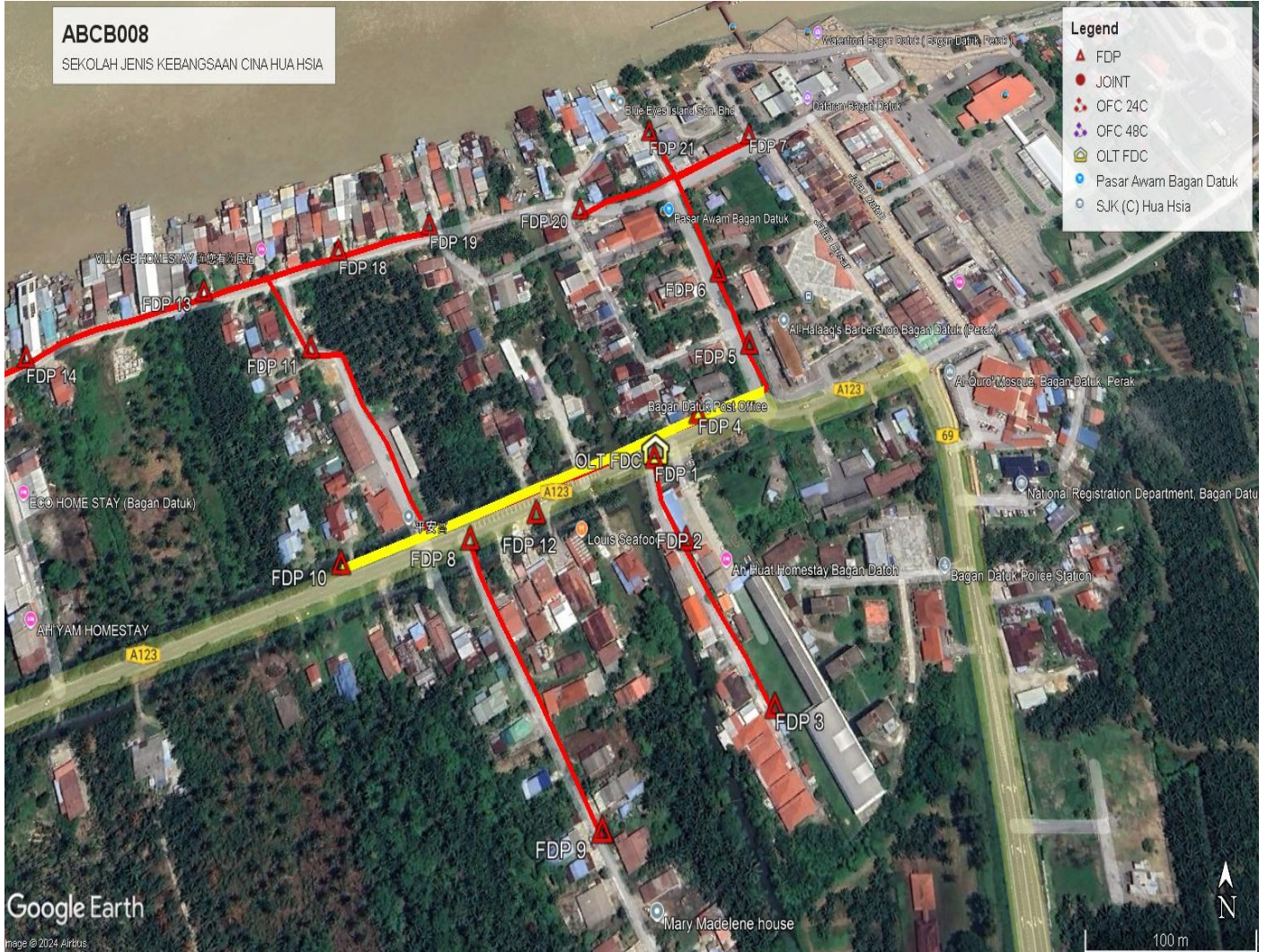




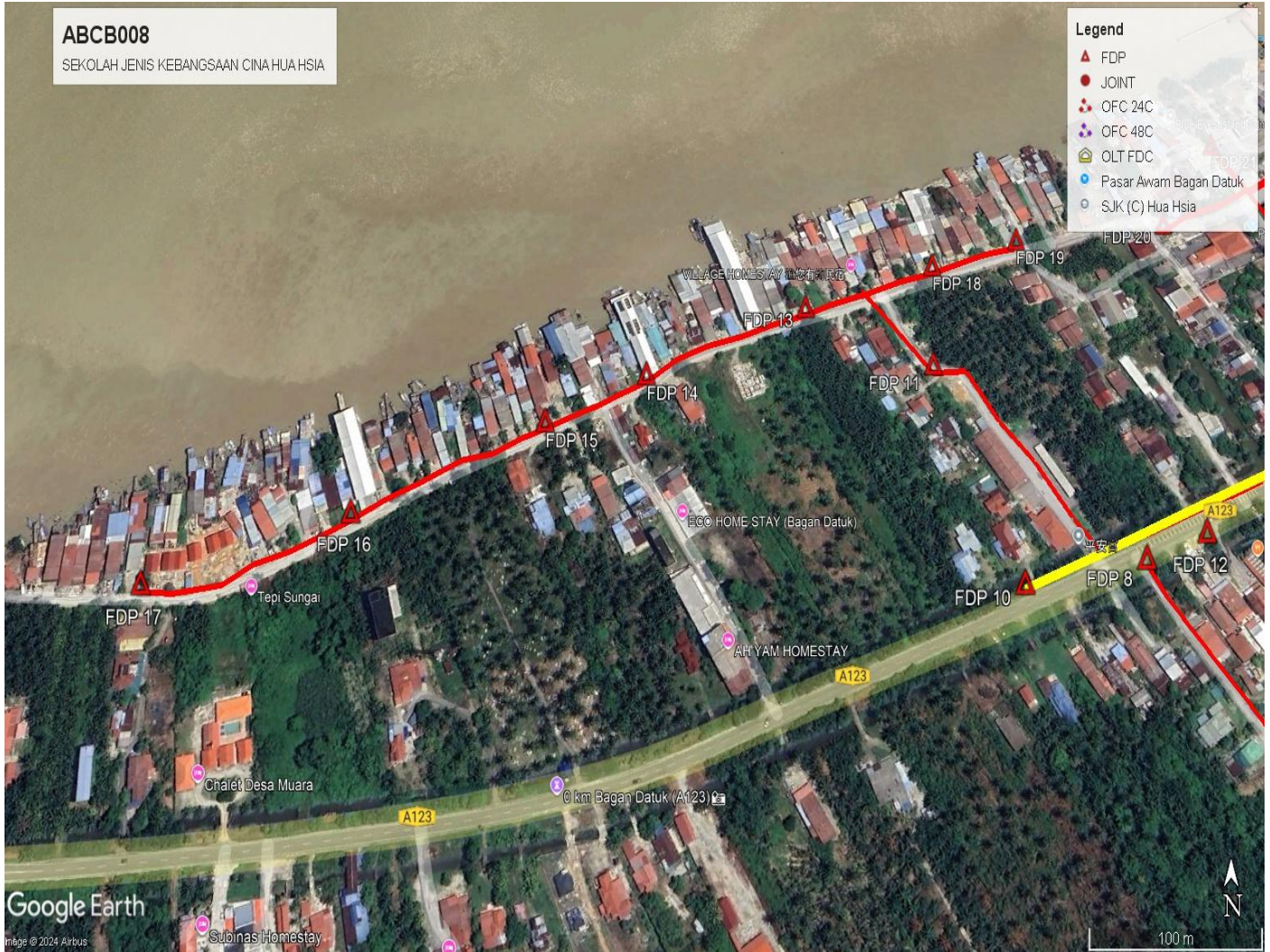
### 3.3 Overview FDP Location



3.4 Site Plan - KMZ Routing (All Local Authority)



3.5 Site Plan - KMZ Routing (All Local Authority)



#### 4.0 PROPOSED NEW MANHOLE

Proposed New Manhole Coordinate					
No.	Manhole Number	Distance (m)	Latitude	Longitude	Local Authority
1	MH01	-	-	-	-
2	MH02	-	-	-	-

#### 5.0 PROPOSED NEW POLE

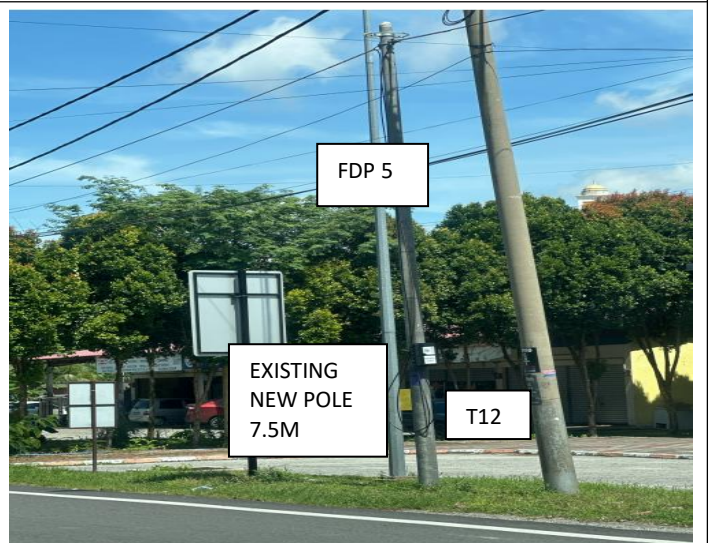
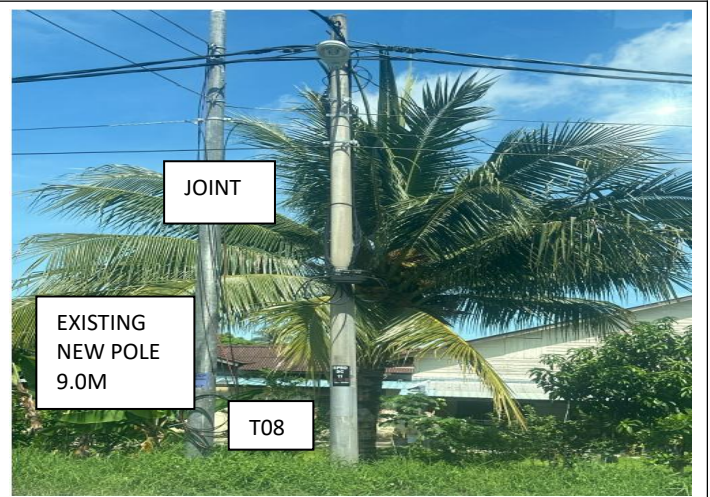
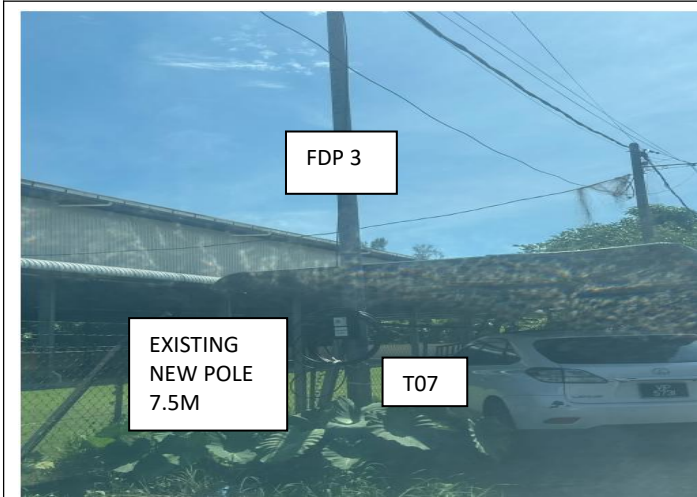
Proposed New Pole Coordinate					
No.	Pole Number	Distance (m)	Latitude	Longitude	Local Authority
1	T001 (OLT&FDC)	3	3.989622	100.784752	Majlis Perbandaran Teluk Intan
2	T002 (FDP 1)	22	3.989627	100.784746	Majlis Perbandaran Teluk Intan
3	T003	34	3.989427	100.784780	Majlis Perbandaran Teluk Intan
4	T004 (FDP 2)	37	3.989162	100.784924	Majlis Perbandaran Teluk Intan
5	T005	38	3.988879	100.785090	Majlis Perbandaran Teluk Intan
6	T006	35	3.988598	100.785274	Majlis Perbandaran Teluk Intan
7	T007 (FDP 3)	35	3.988321	100.785414	Majlis Perbandaran Teluk Intan
8	T008	32	3.989769	100.784703	JKR Teluk Intan
9	T009 (FDP 4)	38	3.989881	100.785018	JKR Teluk Intan
10	T010	22	3.990004	100.785311	JKR Teluk Intan
11	T011	30	3.990082	100.785486	Majlis Perbandaran Teluk Intan
12	T012 (FDP 5)	30	3.990316	100.785372	Majlis Perbandaran Teluk Intan
13	T013	29	3.990567	100.785291	Majlis Perbandaran Teluk Intan
14	T014 (FDP 6)	47	3.990805	100.785189	Majlis Perbandaran Teluk Intan
15	T015	22	3.991206	100.785048	Majlis Perbandaran Teluk Intan
16	T016	22	3.991392	100.784983	Majlis Perbandaran Teluk Intan
17	T017 (JOINT)	69	3.991565	100.784920	Majlis Perbandaran Teluk Intan
18	T018 (FDP 7)	31	3.991849	100.785468	Majlis Perbandaran Teluk Intan
19	T019	29	3.989656	100.784458	JKR Teluk Intan
20	T020	38	3.989563	100.784230	JKR Teluk Intan
21	T021	29	3.989450	100.783911	JKR Teluk Intan
22	T022	20	3.989357	100.783671	JKR Teluk Intan
23	T023	17	3.989282	100.783504	JKR Teluk Intan
24	T024 (FDP 8)	22	3.989179	100.783616	JKR Teluk Intan
25	T025	30	3.989001	100.783692	Majlis Perbandaran Teluk Intan
26	T026	42	3.988780	100.783818	Majlis Perbandaran Teluk Intan
27	T027	48	3.988478	100.784017	Majlis Perbandaran Teluk Intan
28	T028	45	3.988108	100.784235	Majlis Perbandaran Teluk Intan
29	T029 (FDP 9)	18	3.987759	100.784445	Majlis Perbandaran Teluk Intan
30	T030	37	3.989237	100.783356	JKR Teluk Intan
31	T031	25	3.989109	100.783049	JKR Teluk Intan
32	T032 (FDP 10)	22	3.989025	100.782843	JKR Teluk Intan

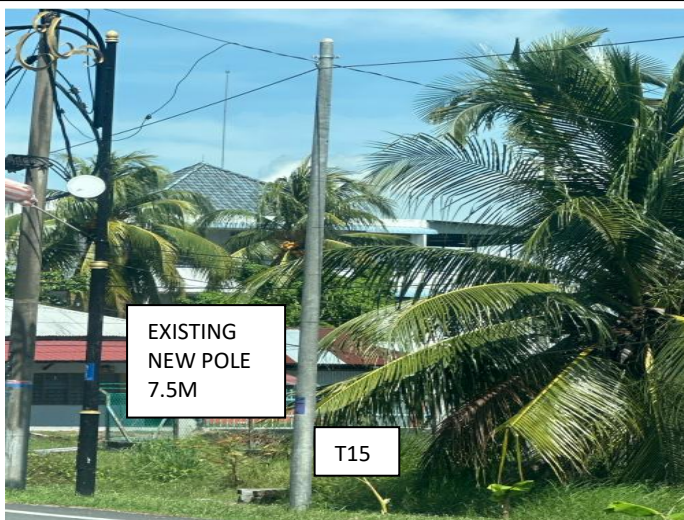
**Proposed New Pole Coordinate**

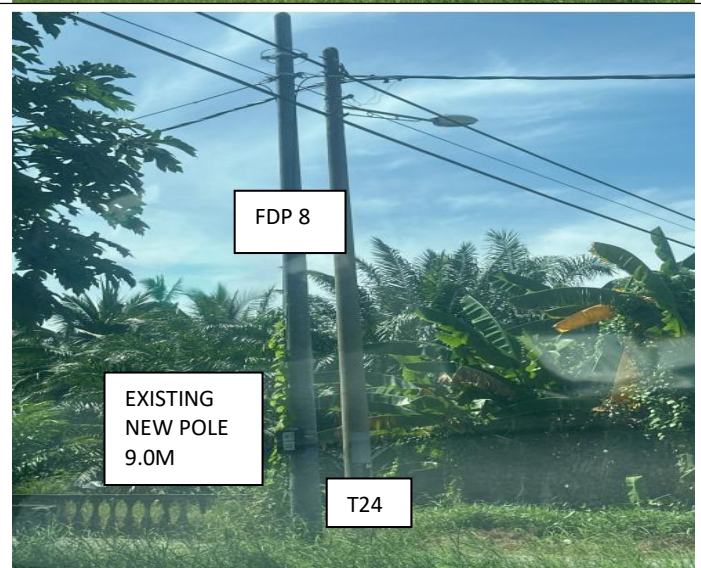
No.	Pole Number	Distance (m)	Latitude	Longitude	Local Authority
33	T033	40	3.989447	100.783215	Majlis Perbandaran Teluk Intan
34	T034	33	3.989757	100.783037	Majlis Perbandaran Teluk Intan
35	T035	39	3.989986	100.782847	Majlis Perbandaran Teluk Intan
36	T036	23	3.990285	100.782679	Majlis Perbandaran Teluk Intan
37	T037 (FDP 11)	50	3.990281	100.782469	Majlis Perbandaran Teluk Intan
38	T038 (FDP 12)	45	3.989319	100.784015	JKR Teluk Intan
39	T039	24	3.990646	100.782206	Majlis Perbandaran Teluk Intan
40	T040 (JOINT)	25	3.990807	100.782067	Majlis Perbandaran Teluk Intan
41	T041	22	3.990748	100.781855	Majlis Perbandaran Teluk Intan
42	T042 (FDP 13)	29	3.990684	100.781672	Majlis Perbandaran Teluk Intan
43	T043	23	3.990615	100.781432	Majlis Perbandaran Teluk Intan
44	T044	28	3.990538	100.781240	Majlis Perbandaran Teluk Intan
45	T045	24	3.990468	100.781005	Majlis Perbandaran Teluk Intan
46	T046	29	3.990381	100.780804	Majlis Perbandaran Teluk Intan
47	T047 (FDP 14)	25	3.990241	100.780599	Majlis Perbandaran Teluk Intan
48	T048	16	3.990159	100.780419	Majlis Perbandaran Teluk Intan
49	T049	19	3.990099	100.780288	Majlis Perbandaran Teluk Intan
50	T050	23	3.990032	100.780138	Majlis Perbandaran Teluk Intan
51	T051 (FDP 15)	20	3.989954	100.779953	Majlis Perbandaran Teluk Intan
52	T052	22	3.989888	100.779789	Majlis Perbandaran Teluk Intan
53	T053	20	3.989804	100.779612	Majlis Perbandaran Teluk Intan
54	T054	32	3.989762	100.779440	Majlis Perbandaran Teluk Intan
55	T055	25	3.989634	100.779186	Majlis Perbandaran Teluk Intan
56	T056	24	3.989533	100.778960	Majlis Perbandaran Teluk Intan
57	T057 (FDP 16)	32	3.989426	100.778775	Majlis Perbandaran Teluk Intan
58	T058	24	3.989345	100.778607	Majlis Perbandaran Teluk Intan
59	T059	24	3.989257	100.778419	Majlis Perbandaran Teluk Intan
60	T060	23	3.989190	100.778218	Majlis Perbandaran Teluk Intan
61	T061	29	3.989073	100.778050	Majlis Perbandaran Teluk Intan
62	T062	33	3.989026	100.777770	Majlis Perbandaran Teluk Intan
63	T063 (FDP 17)	33	3.989025	100.777580	Majlis Perbandaran Teluk Intan
64	T064	27	3.990894	100.782338	Majlis Perbandaran Teluk Intan
65	T065 (FDP 18)	22	3.990950	100.782563	Majlis Perbandaran Teluk Intan
66	T066	20	3.991027	100.782756	Majlis Perbandaran Teluk Intan
67	T067	30	3.991084	100.782918	Majlis Perbandaran Teluk Intan
68	T068 (FDP 19)	20	3.991133	100.783167	Majlis Perbandaran Teluk Intan
69	T069 (FDP 20)	25	3.991260	100.784233	Majlis Perbandaran Teluk Intan
70	T070	32	3.991376	100.784420	Majlis Perbandaran Teluk Intan
71	T071	29	3.991464	100.784694	Majlis Perbandaran Teluk Intan
72	T072	20	3.991724	100.784827	Majlis Perbandaran Teluk Intan
73	T073 (FDP 21)	20	3.991866	100.784732	Majlis Perbandaran Teluk Intan
74	T033	40	3.989447	100.783215	Majlis Perbandaran Teluk Intan

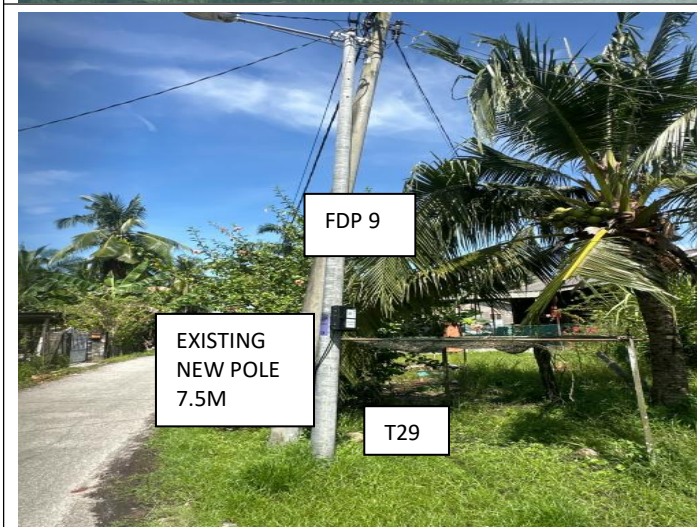
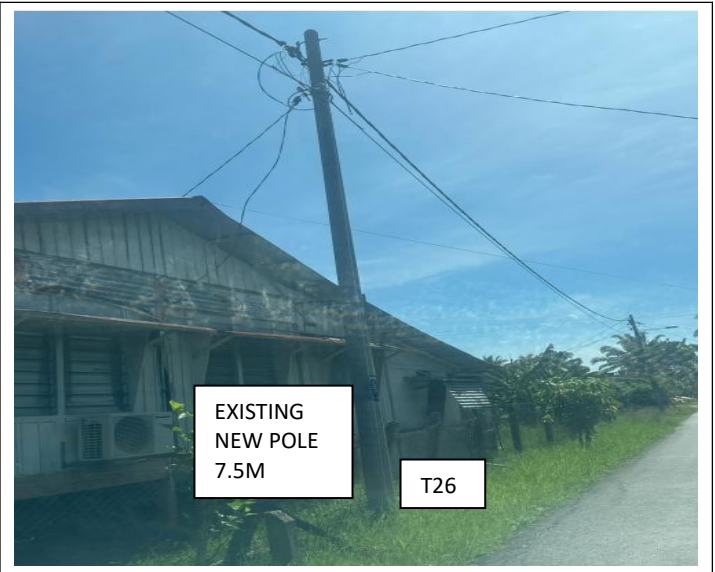
**6.0 SITE PHOTOS - PROPOSED NEW POLE**



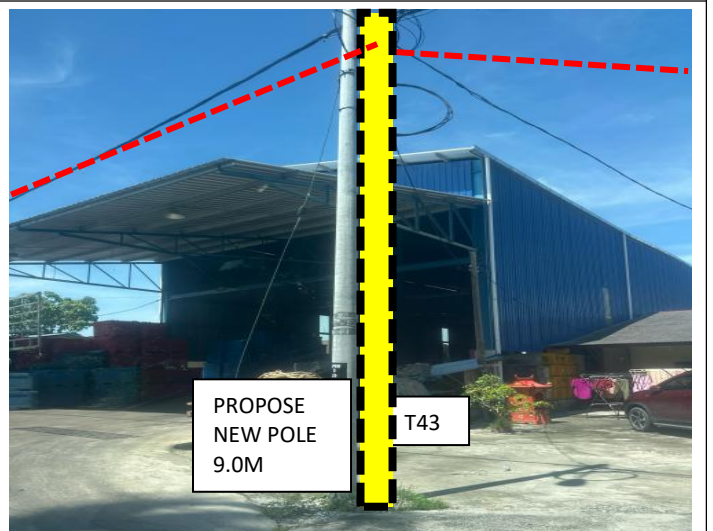
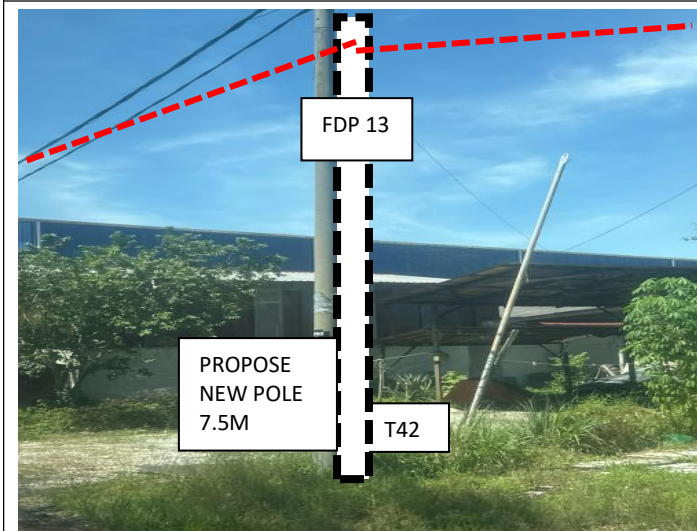
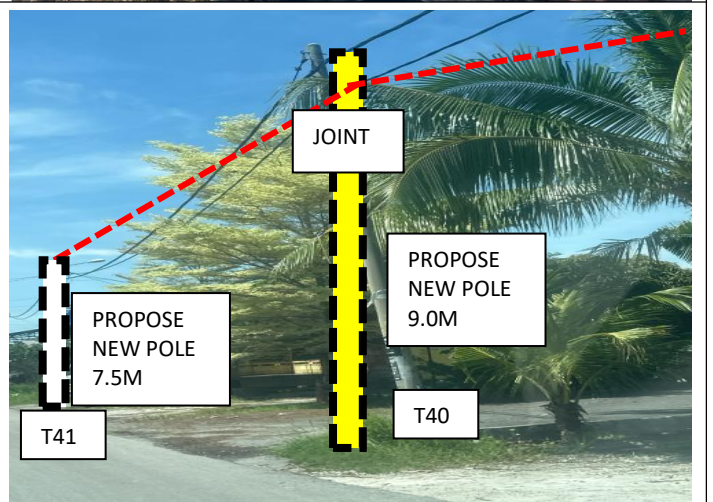
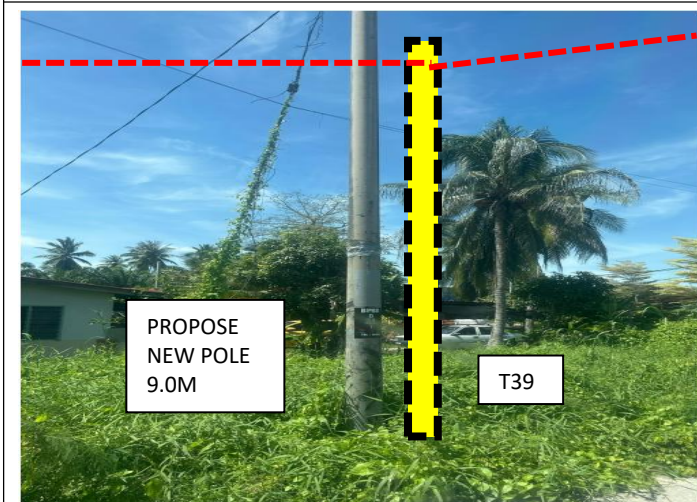


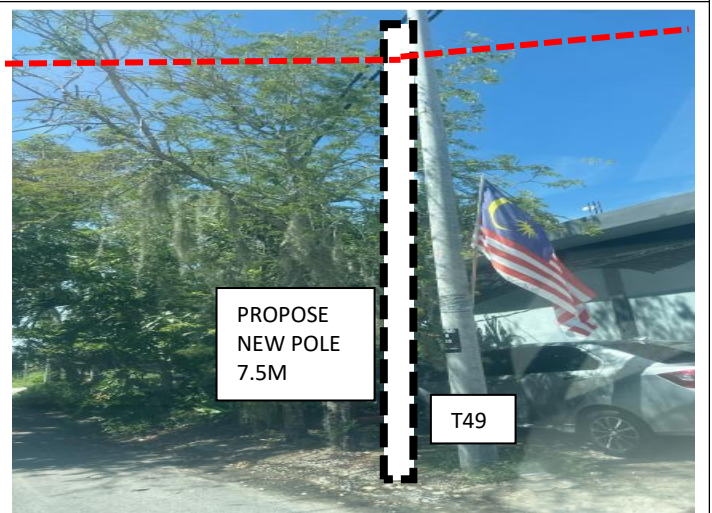
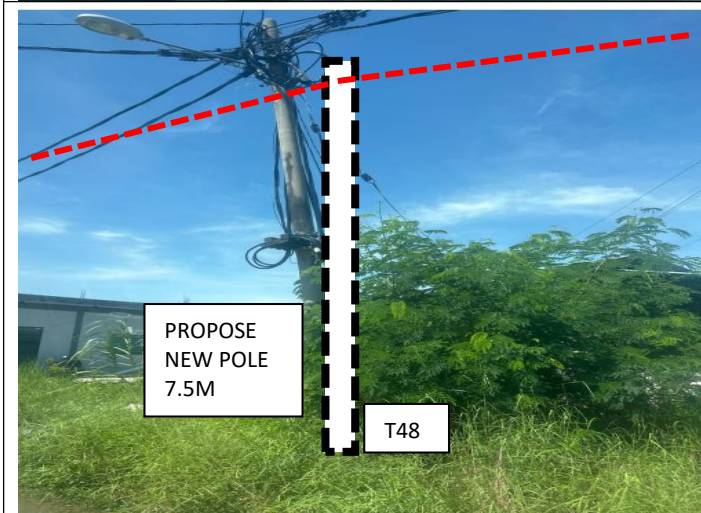
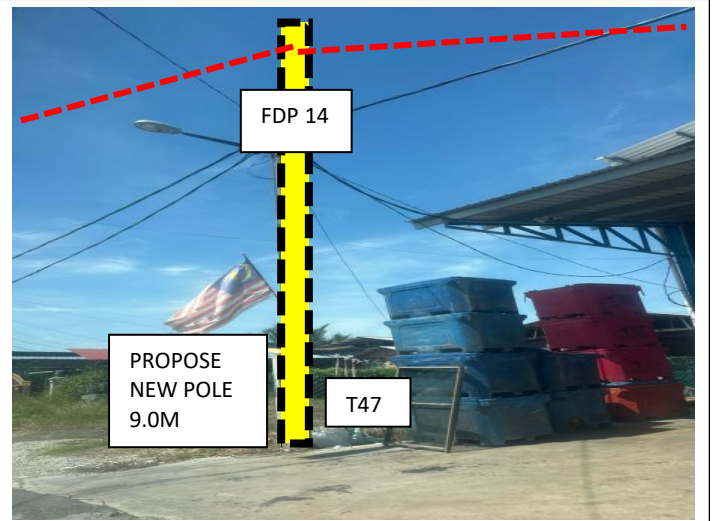
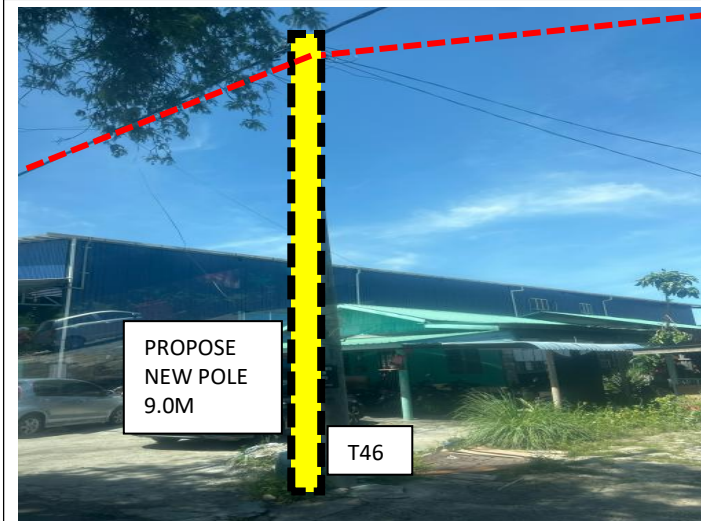
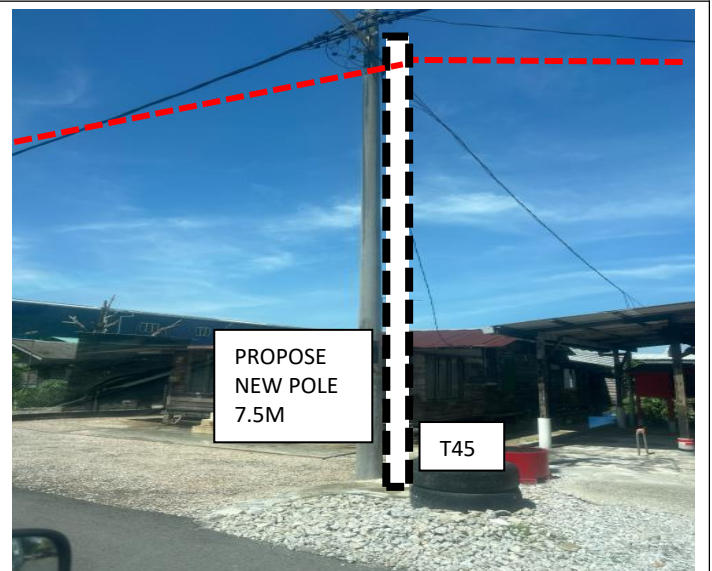
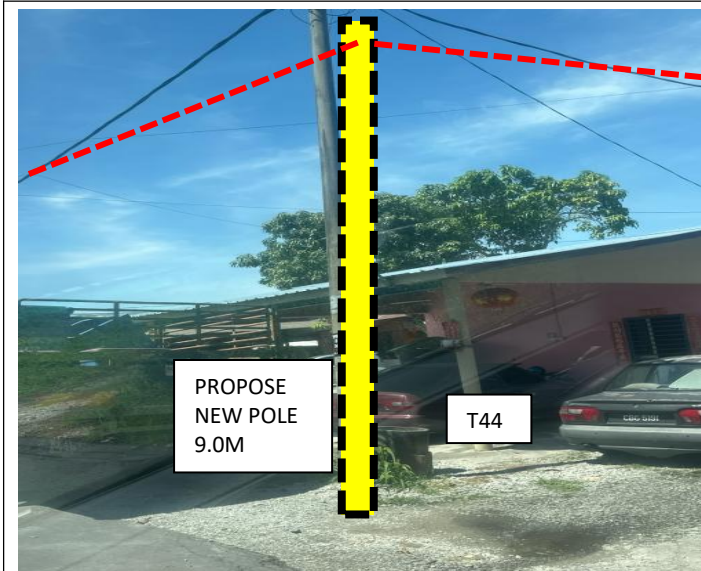


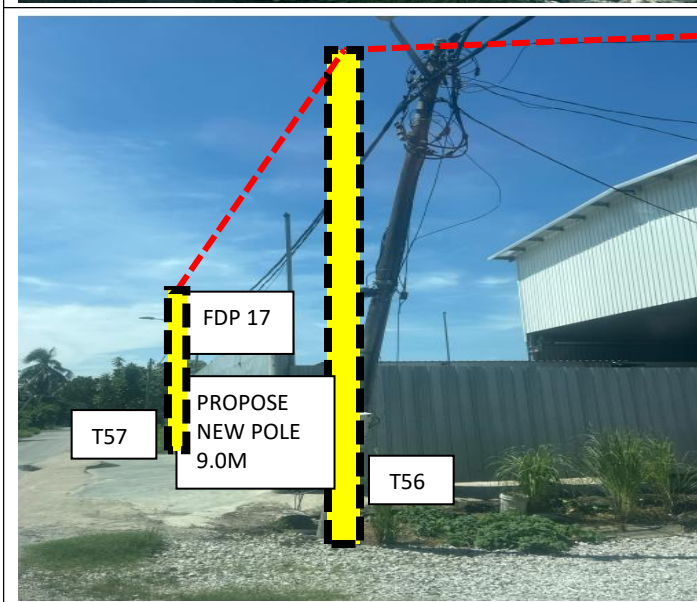
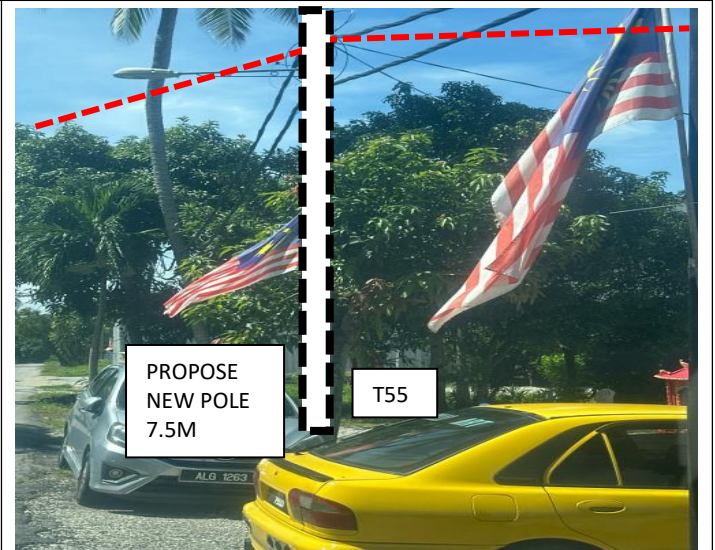
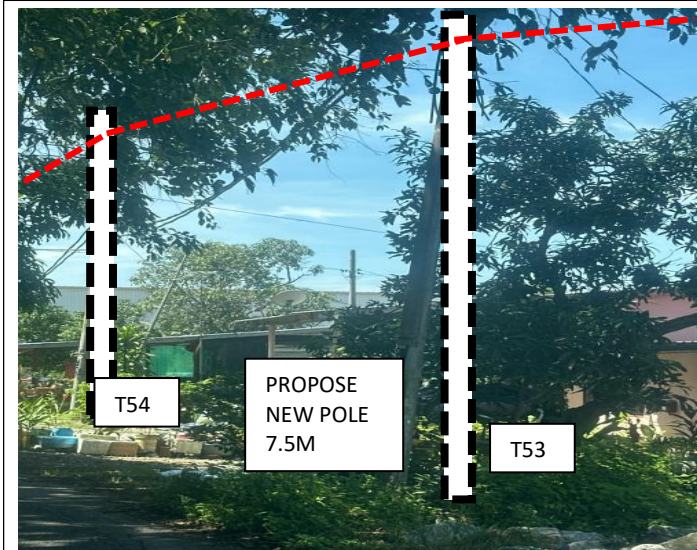
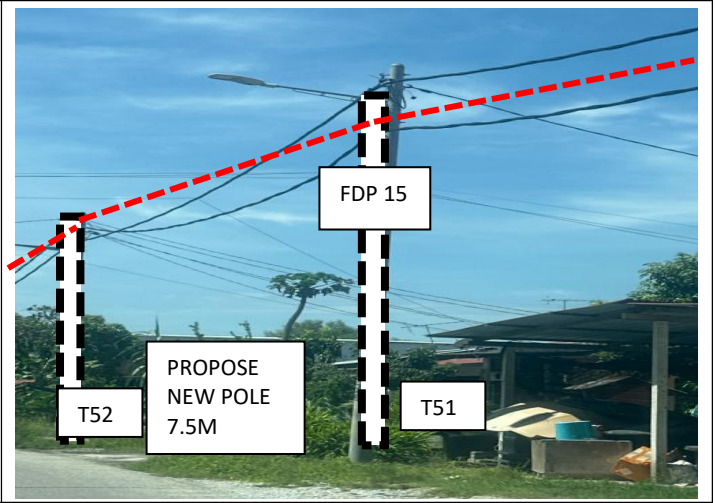
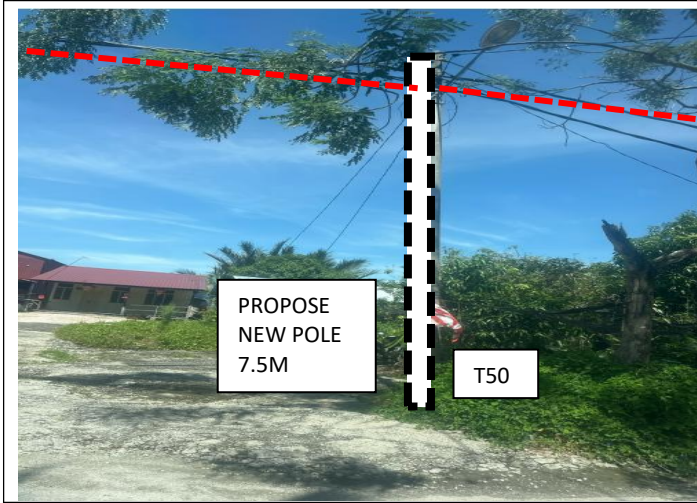


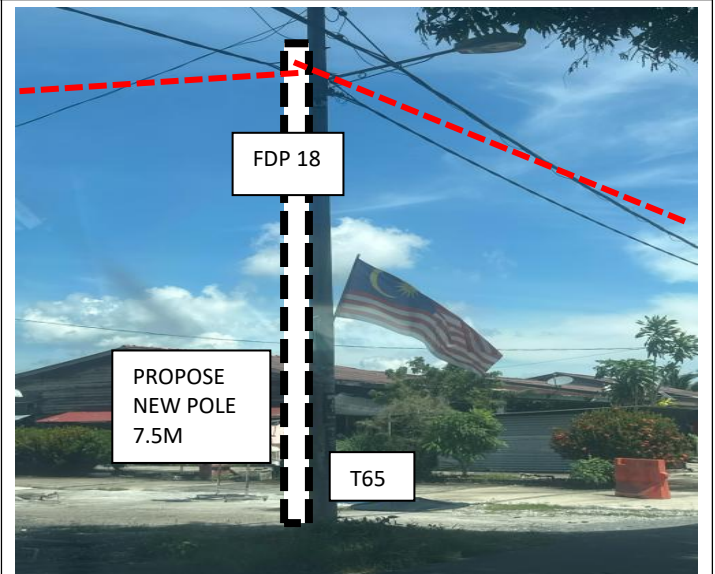
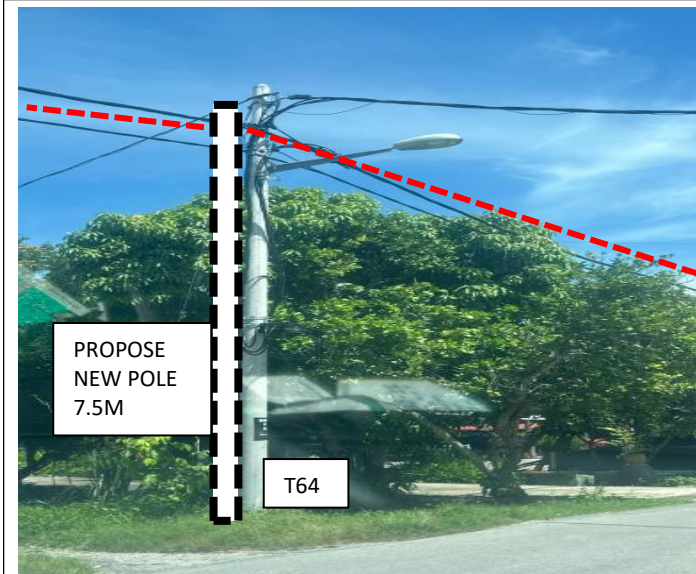
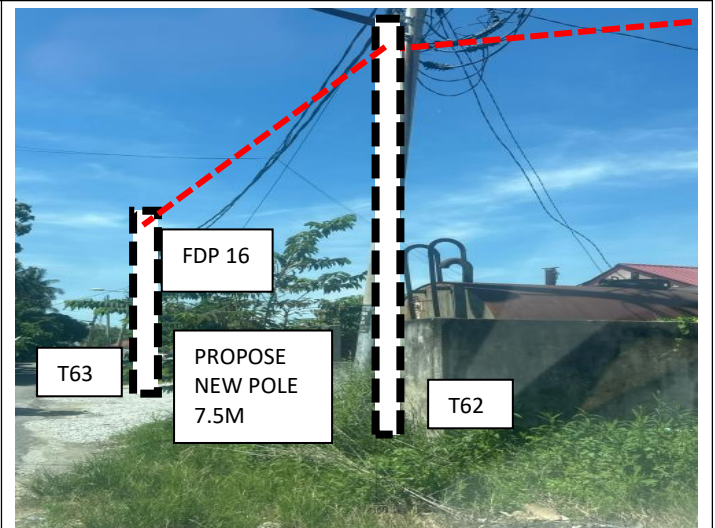
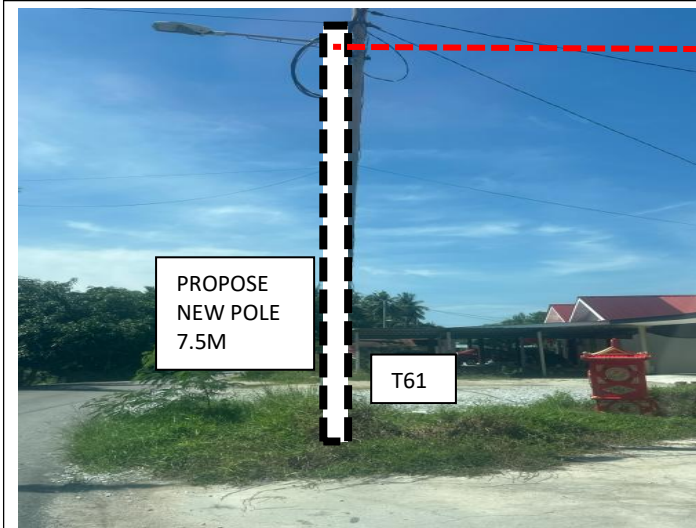
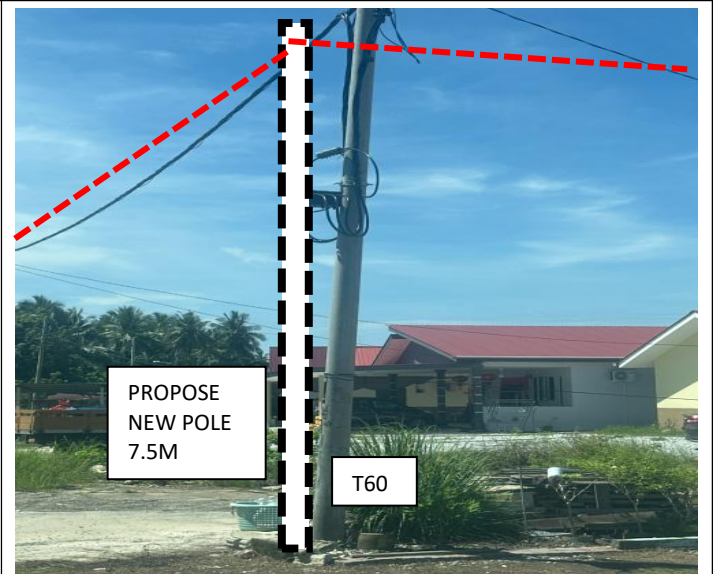
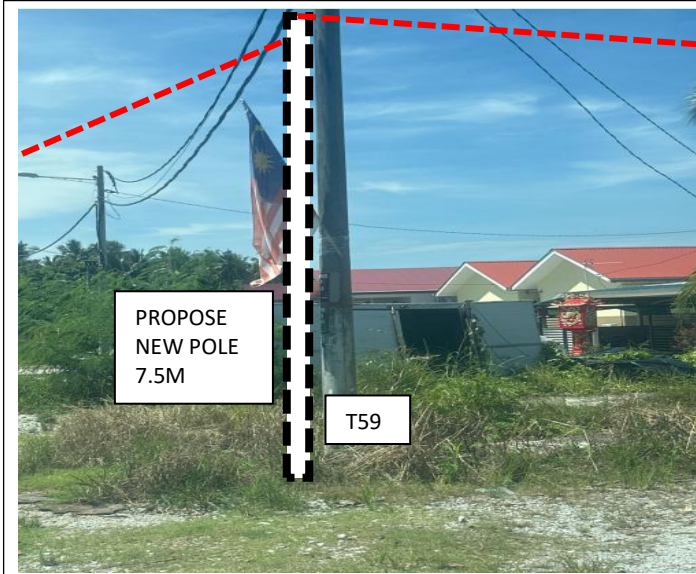


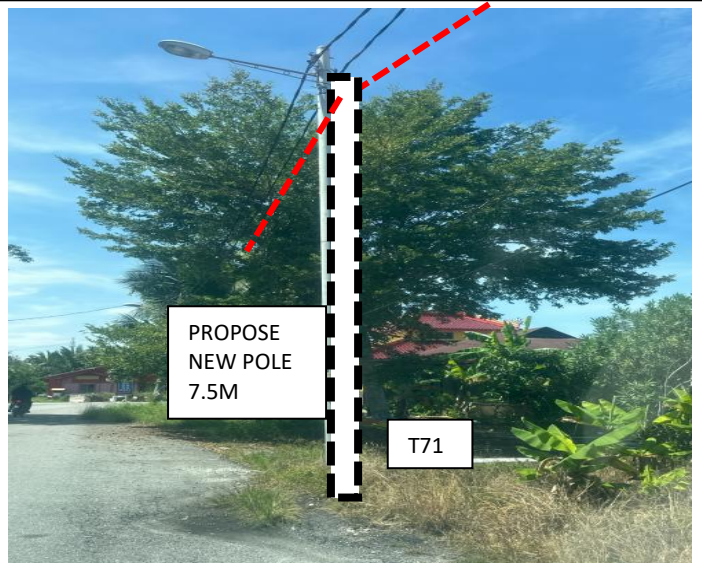
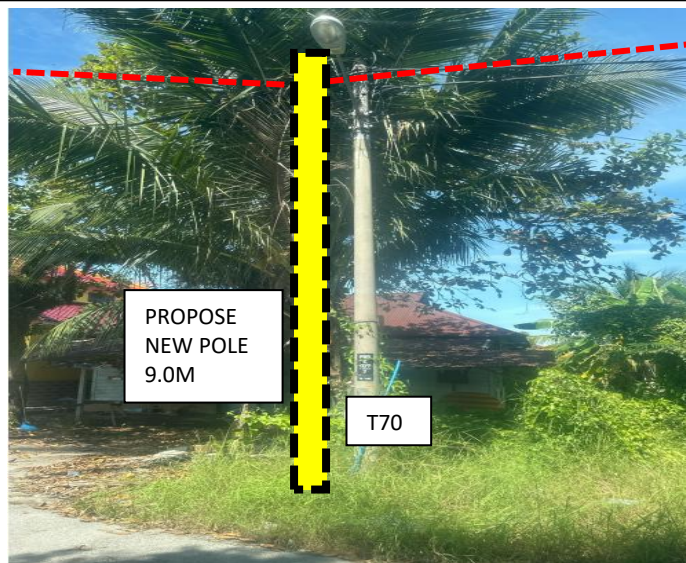
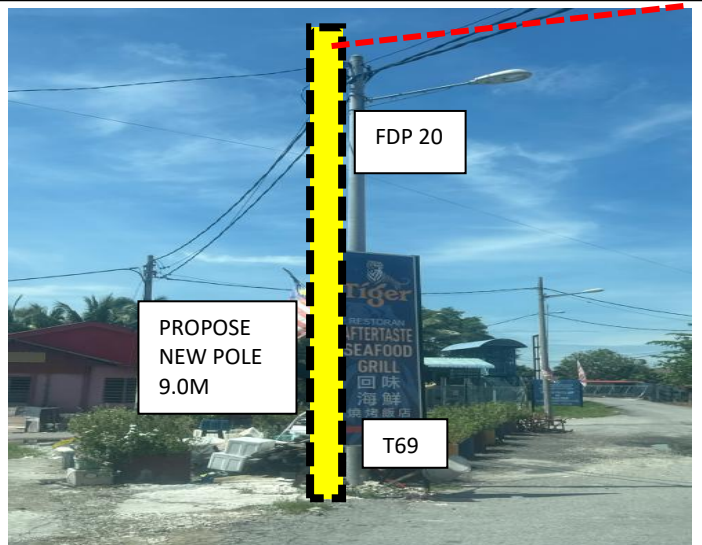
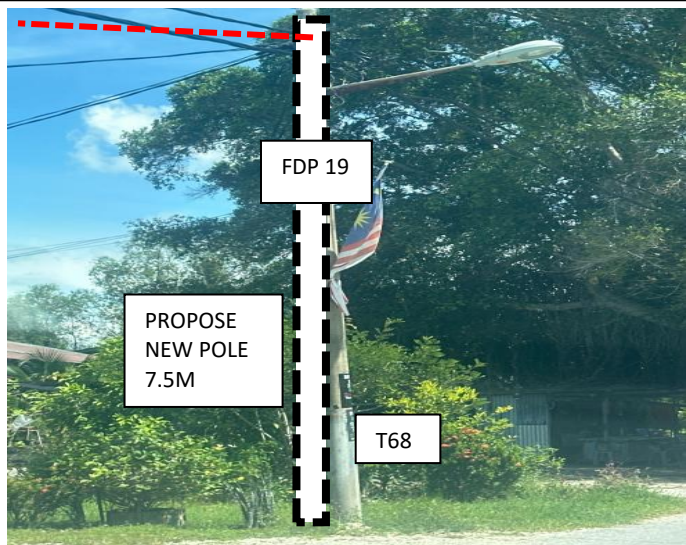
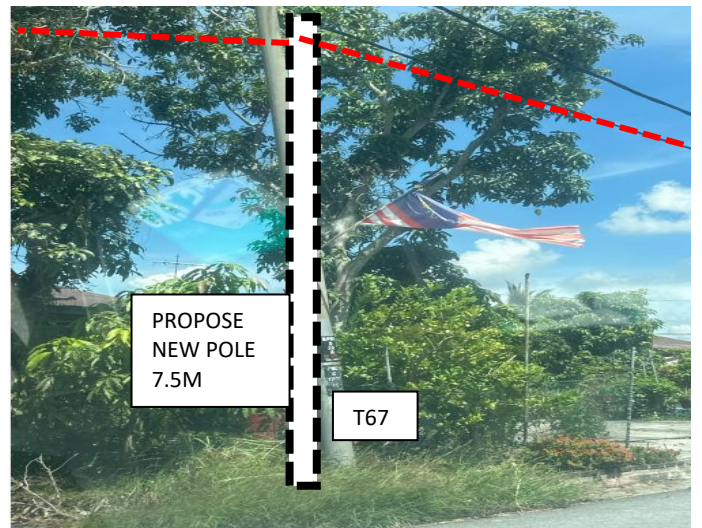
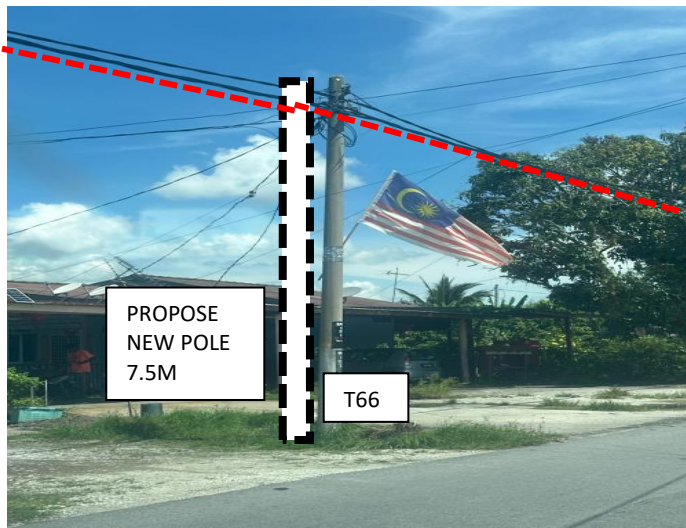


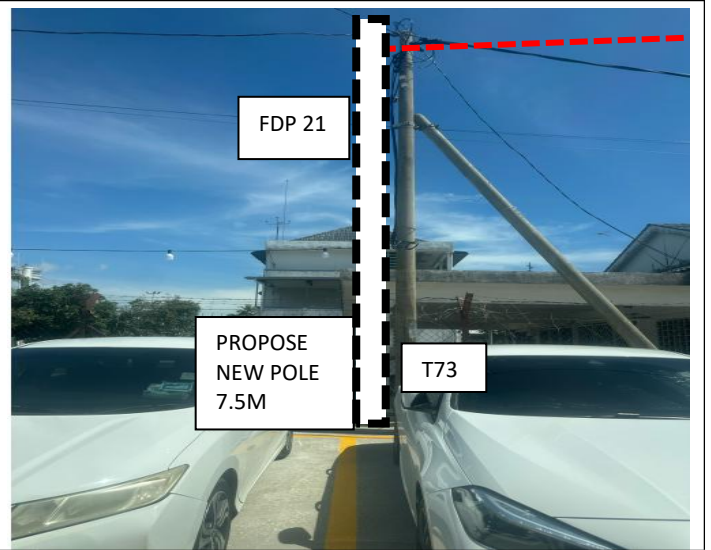
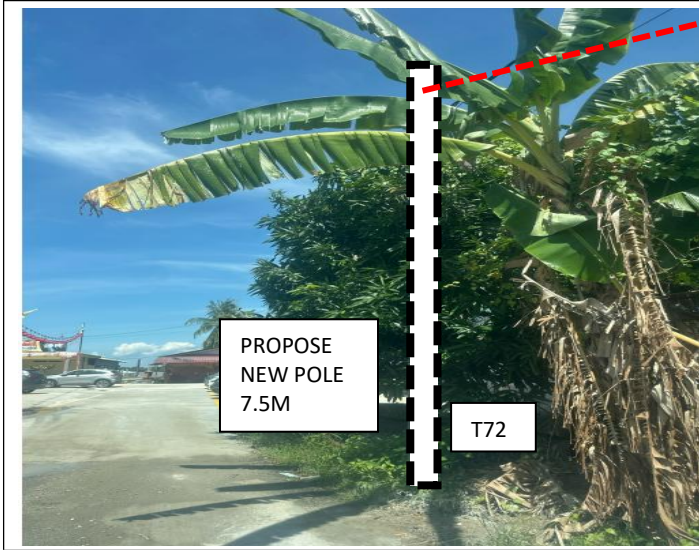














PROJEK PENYEDIAAN DAN PENYELENGGARAAN POINT OF PRESENT (POP) FASA 2: HAB INFRASTUKTUR GENTIAN OPTIK BERHAMPIRAN DENGAN SEKOLAH, KAWASAN PERINDUSTRIAN, PREMIS KERAJAAN DAN KOMUNITI SEKITARNYA OLEH KEMENTERIAN KOMUNIKASI MALAYSIA - ZON UTARA (KKMM.400-11/17/132(1))

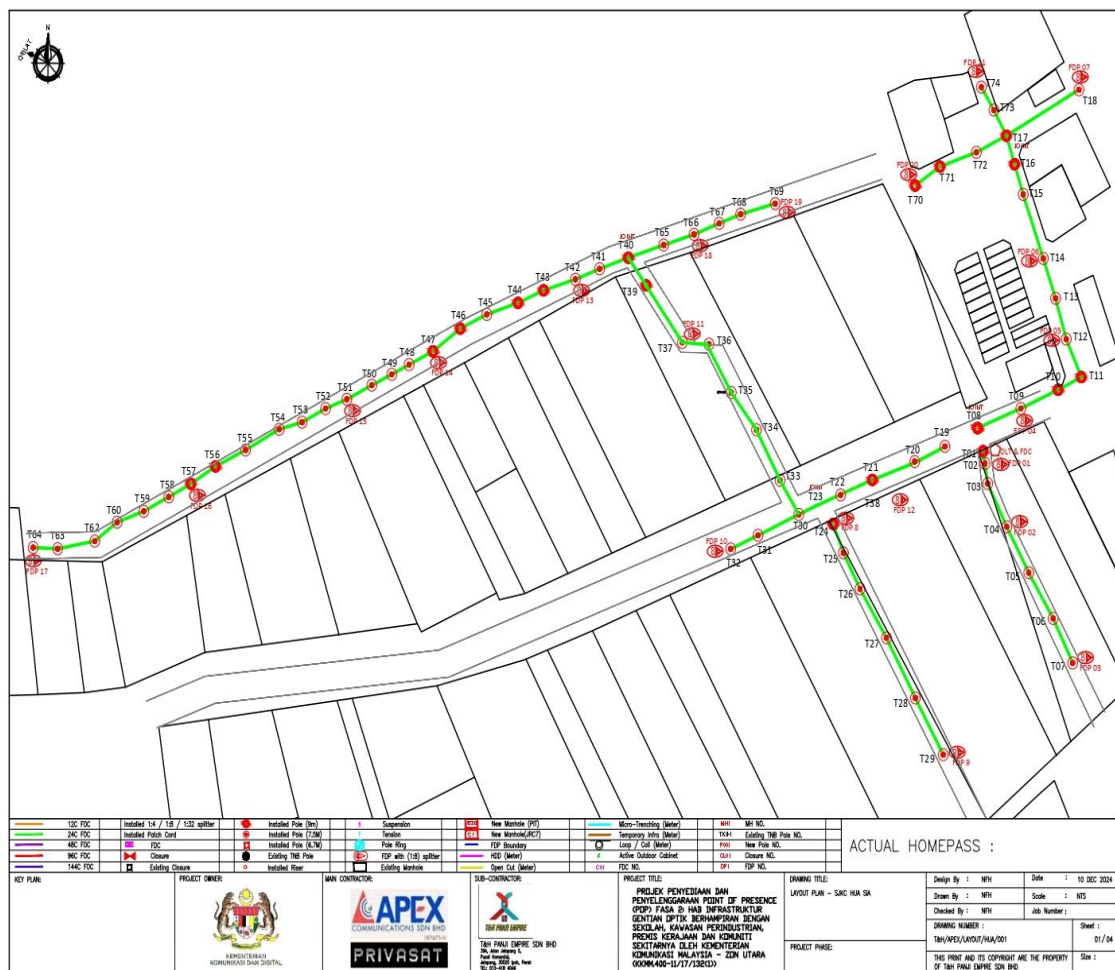


## 7.0 3<sup>rd</sup> PARTIES DEPENDENCIES

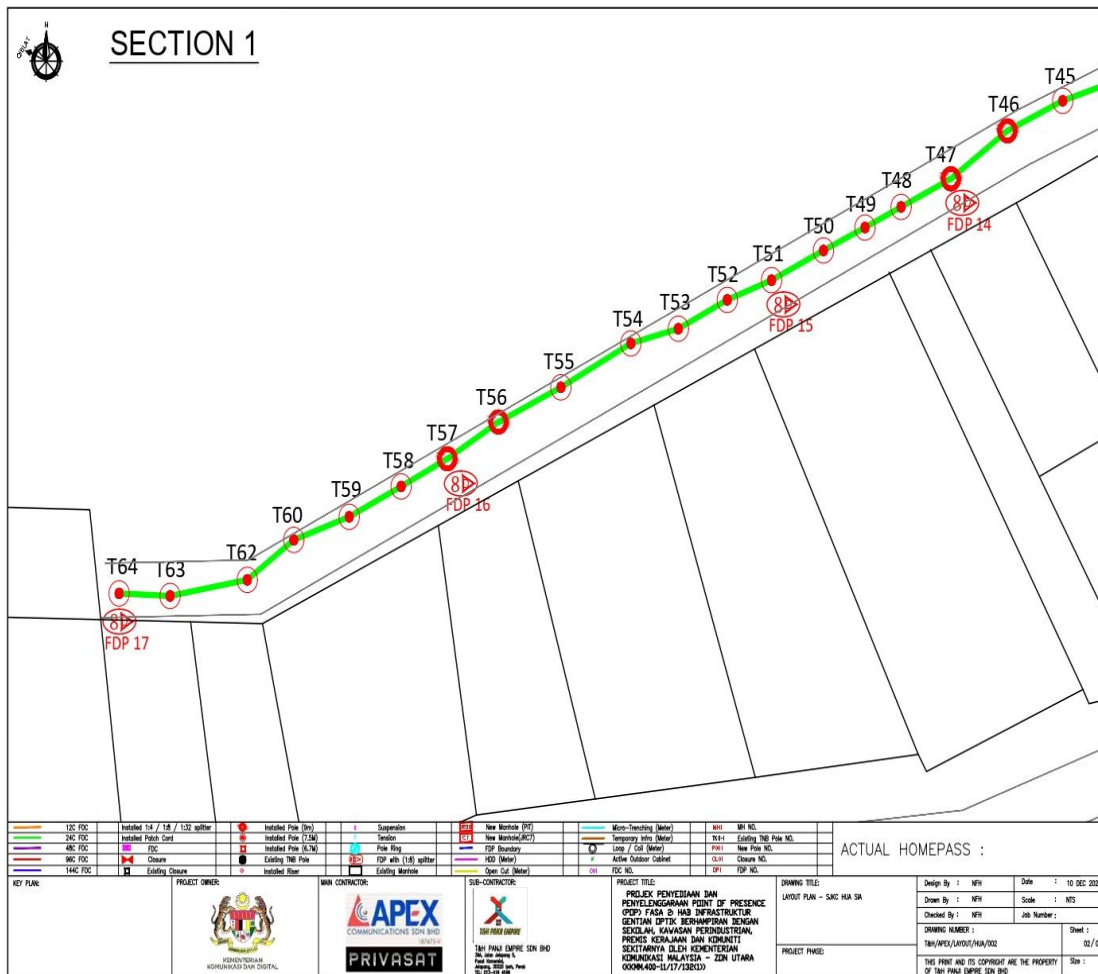
NO	LOCAL COUNCIL / AUTHORITY	REMARK
1	Majlis Perbandaran Teluk Intan	2490
2	JKR Teluk Intan	310

8.0 Drawing

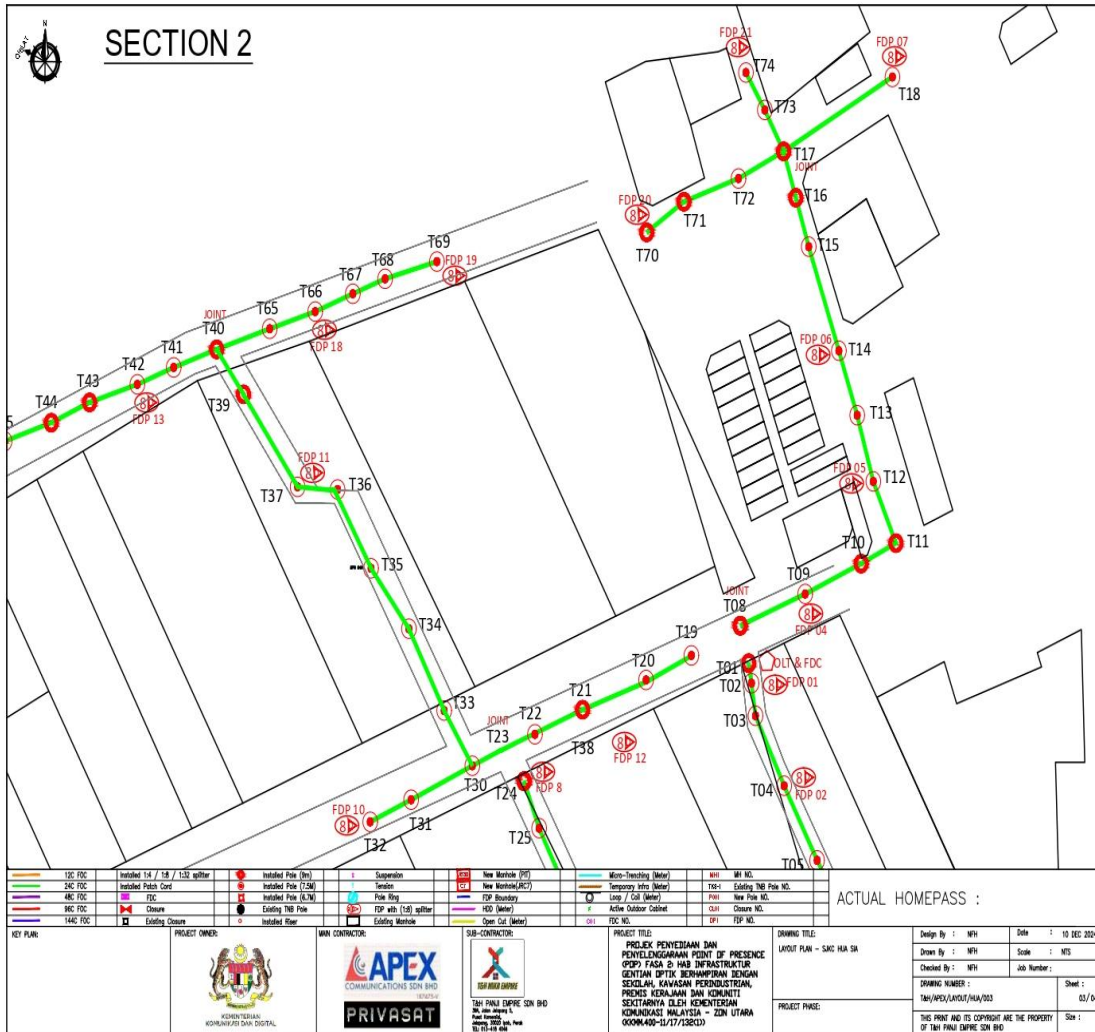
Layout 1



Layout 2



Layout 3



Layout 4

