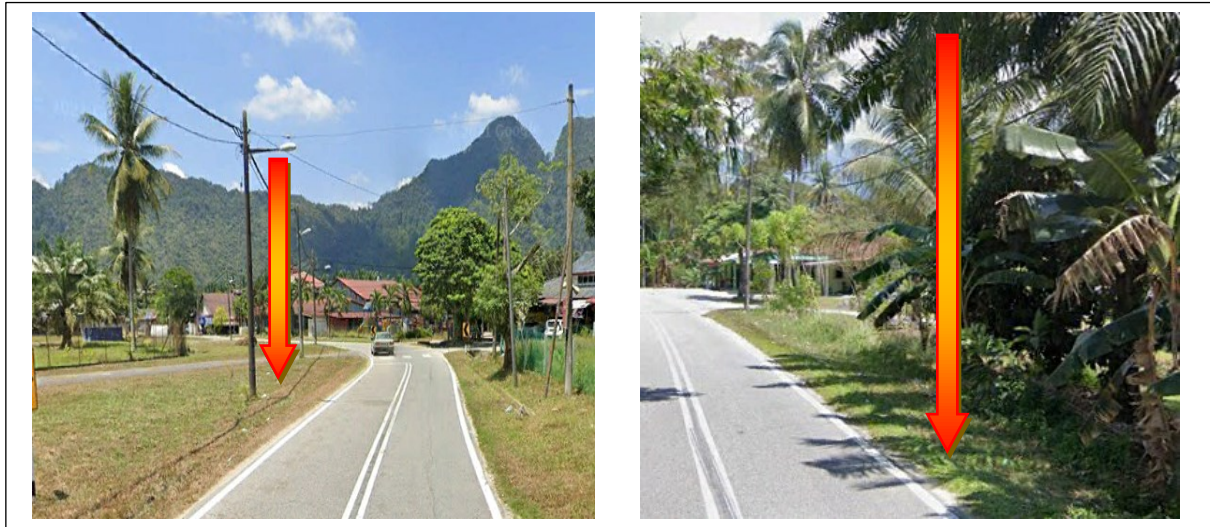


## TECHNICAL PROPOSAL

### POP2 ABC9006 SEKOLAH JENIS KEBANGSAAN (CINA) SIN MIN (D-SIDE)

Company Name	:	WCWL COMMUNICATIONS SDN BHD
Company Address	:	127, Jalan PUJ 3/3, Taman Puncak Jalil 43300 Subang Jaya Selangor
Prepared By	:	Nur Syahidah Izzatie
Date	:	22/11/2024



POINT A

POINT B

**Starting Point**

Site / Boundary Name	:	SEKOLAH JENIS KEBANGSAAN (CINA) SIN MIN
Address	:	Jalan Chenderiang
District	:	Kampar
Postcode	:	31850
State	:	Perak
GPS Coordinate	:	4.393193,101.193419
LRD	:	A

**End Point**

Site / Boundary Name	:	SEKOLAH JENIS KEBANGSAAN (CINA) SIN MIN
Address	:	Jalan Chenderiang
District	:	Kampar
Postcode	:	31850
State	:	Perak
GPS Coordinate	:	4.386916, 101.213007
LRD	:	B



PROJEK PENYEDIAAN DAN PENYELENGGARAAN POINT OF PRESENCE (POP) FASA 2: HAB INFRASTRUKTUR GENTIAN OPTIK BERHAMPIRAN DENGAN SEKOLAH, KAWASAN PERINDUSTRIAN, PREMIS KERAJAAN DAN KOMUNITI SEKITARNYA OLEH KEMENTERIAN KOMUNIKASI MALAYSIA - ZON UTARA (KKMM.400-11/17/132(1))



### Work Summary

No	Proposed Distance and Method	Unit	Qty
1	Horizontal Directional Drilling (HDD)	m	<b>120</b>
2	Carriage Way Open trench (CW)	m	<b>0</b>
3	Grass Verge Open Trenching (GV)	m	<b>0</b>
4	Micro trenching (MT)	m	<b>230</b>
	Total		<b>350</b>

	Other Information	Unit	Qty
1	Proposed Manhole	EA	<b>4</b>
2	Proposed Pole	EA	<b>119</b>
3	Joint Closure	EA	<b>8</b>
4	Estimated time required for completion	days	<b>30</b>



PROJEK PENYEDIAAN DAN PENYELENGGARAAN POINT OF PRESENCE (POP) FASA 2: HAB INFRASTRUKTUR GENTIAN OPTIK BERHAMPIRAN DENGAN SEKOLAH, KAWASAN PERINDUSTRIAN, PREMIS KERAJAAN DAN KOMUNITI SEKITARNYA OLEH KEMENTERIAN KOMUNIKASI MALAYSIA - ZON UTARA (KKMM.400-11/17/132(1))



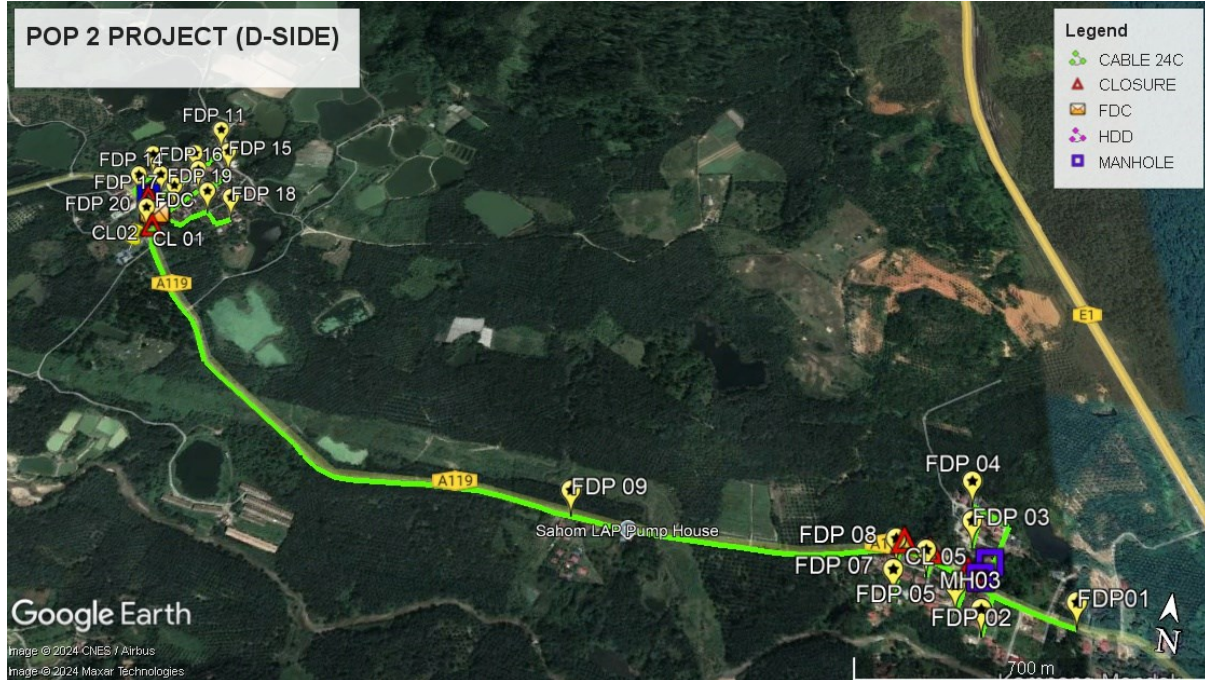
### Local Authority Summary

#### 1. Daerah Kampar

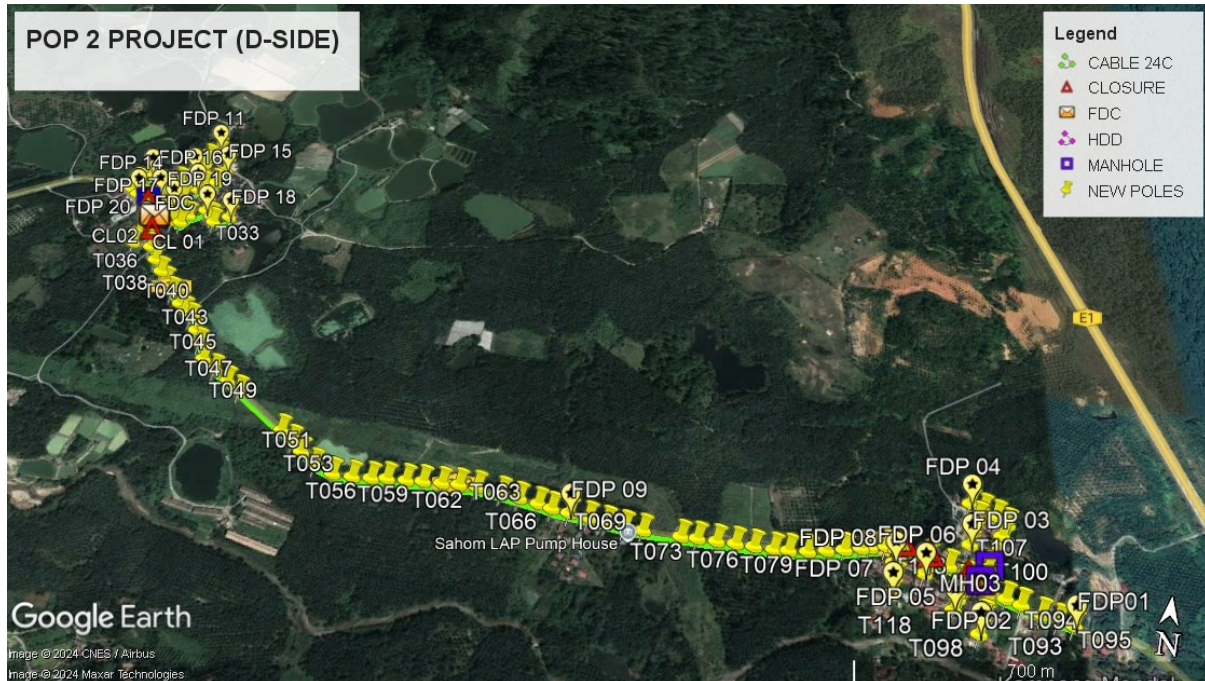
Bil	Items	Owner	Quantity	Distance(m)
1	HDD	JKR	2	120m
		Majlis	-	-
		Estate / Private Land	-	-
2	New Pole	JKR	71pcs	2738m
		Majlis	48pcs	1178m
		Estate / Private Land	-	-
3	Existing TNB Pole	JKR	-	-
		Majlis	-	-
		Estate / Private Land	-	-
Total				4036m

Site Plan – KMZ (Overview site area)

Proposed FDP and Closure



Proposed New Pole



**Site Plan – KMZ Routing (All Local Authority)**

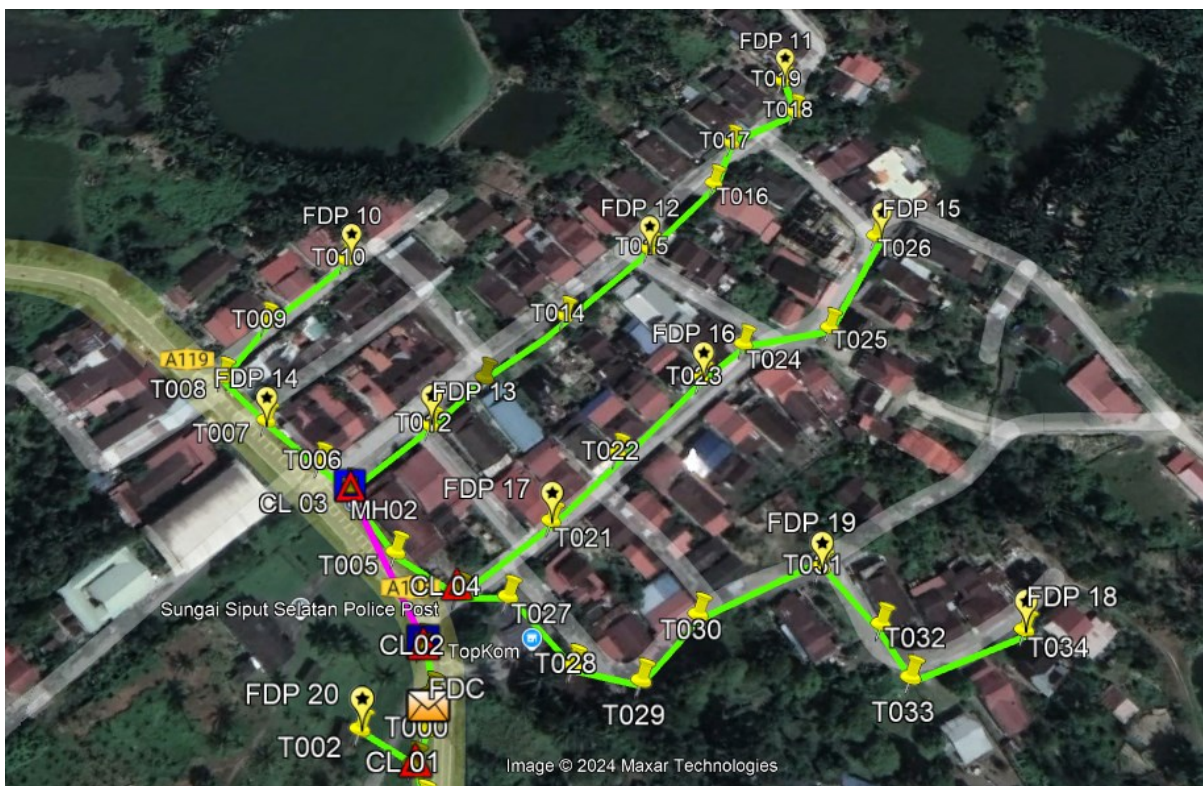
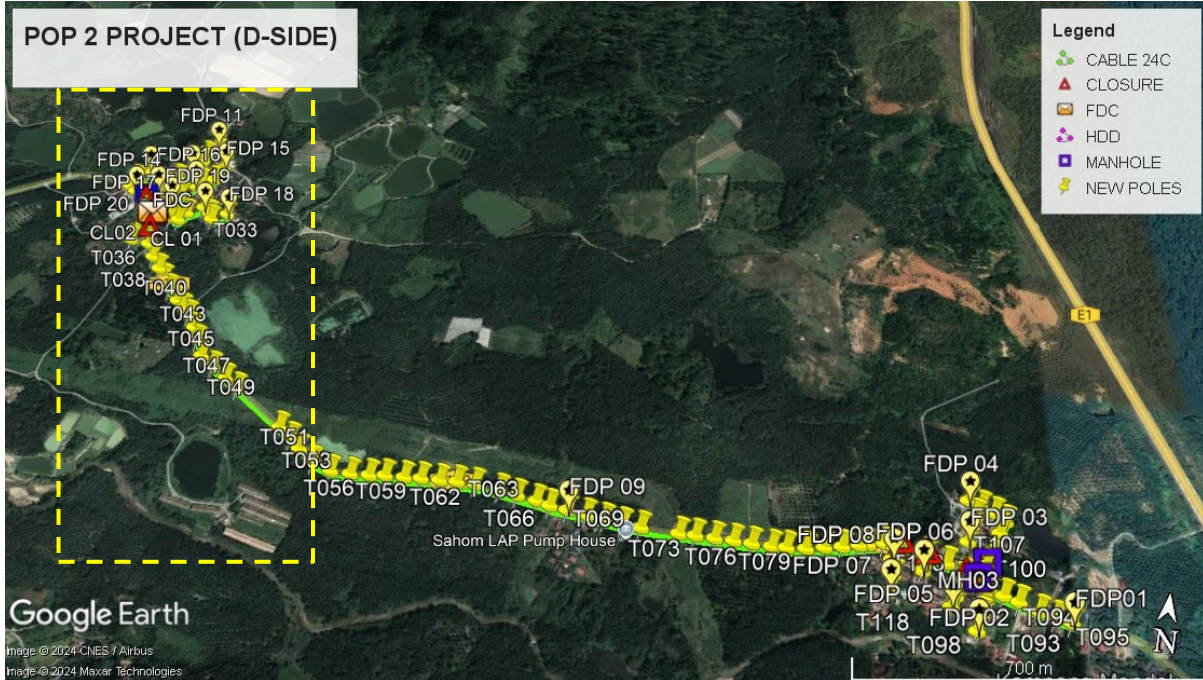


**Red – JKR Kampar**

**Blue - Majlis Perbandaran Kampar**

Site Plan – KMZ Routing (All site area)

Route 1



Route 1.1

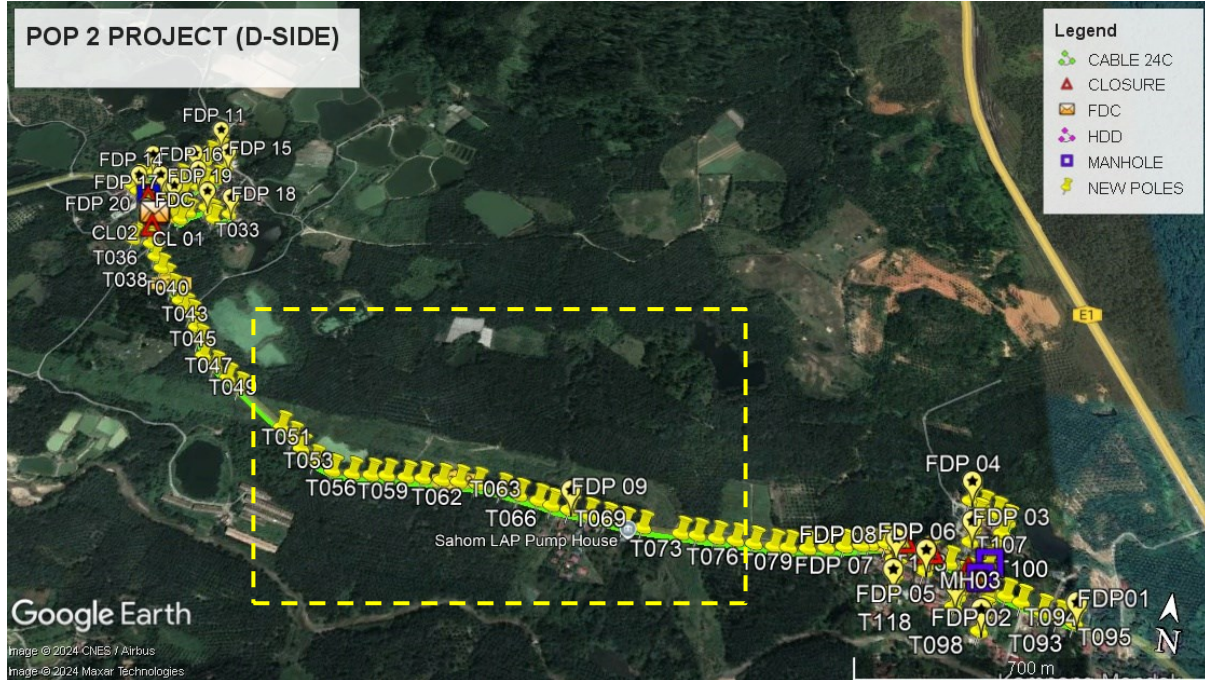


**Route 1.2**



**Route 1.3**

**Route 2**

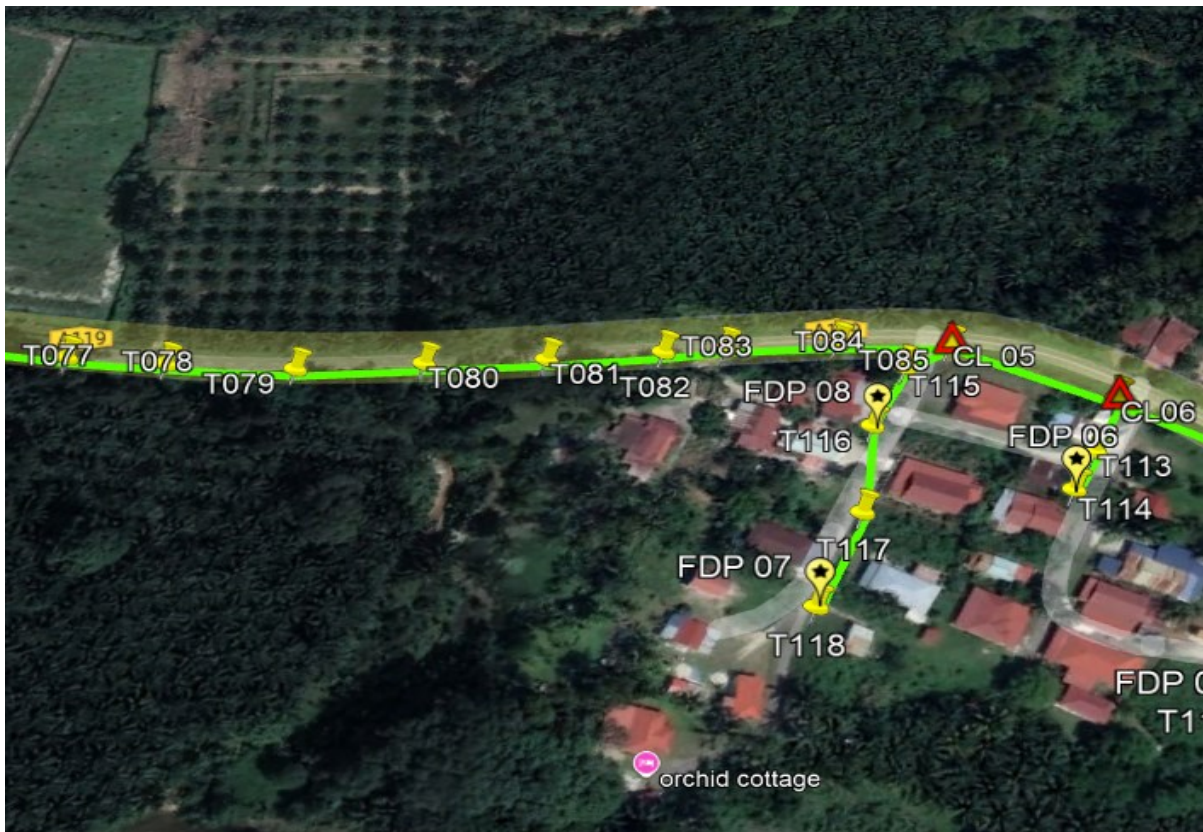
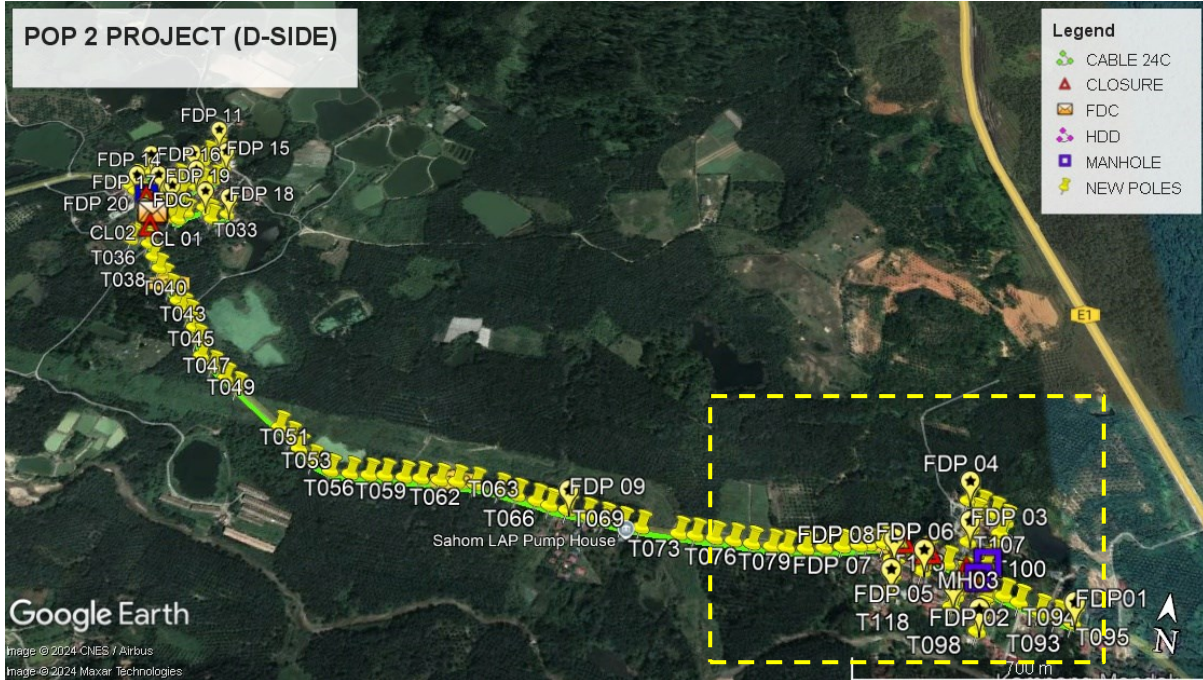


**Route 2.1**

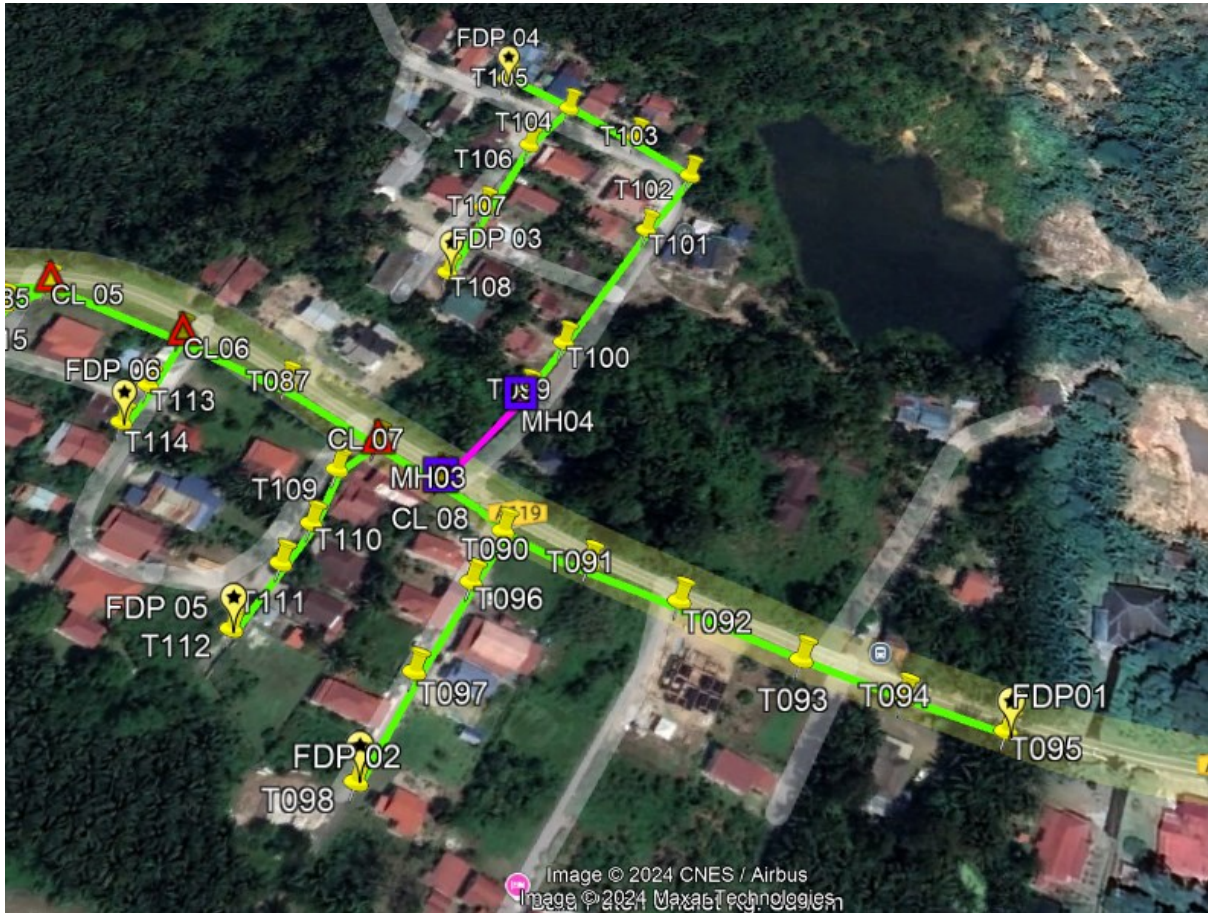


Route 2.2

Route 3



Route 3.1



**Route 3.2**

**Site Plan – KMZ Routing (Prop New Manhole)**

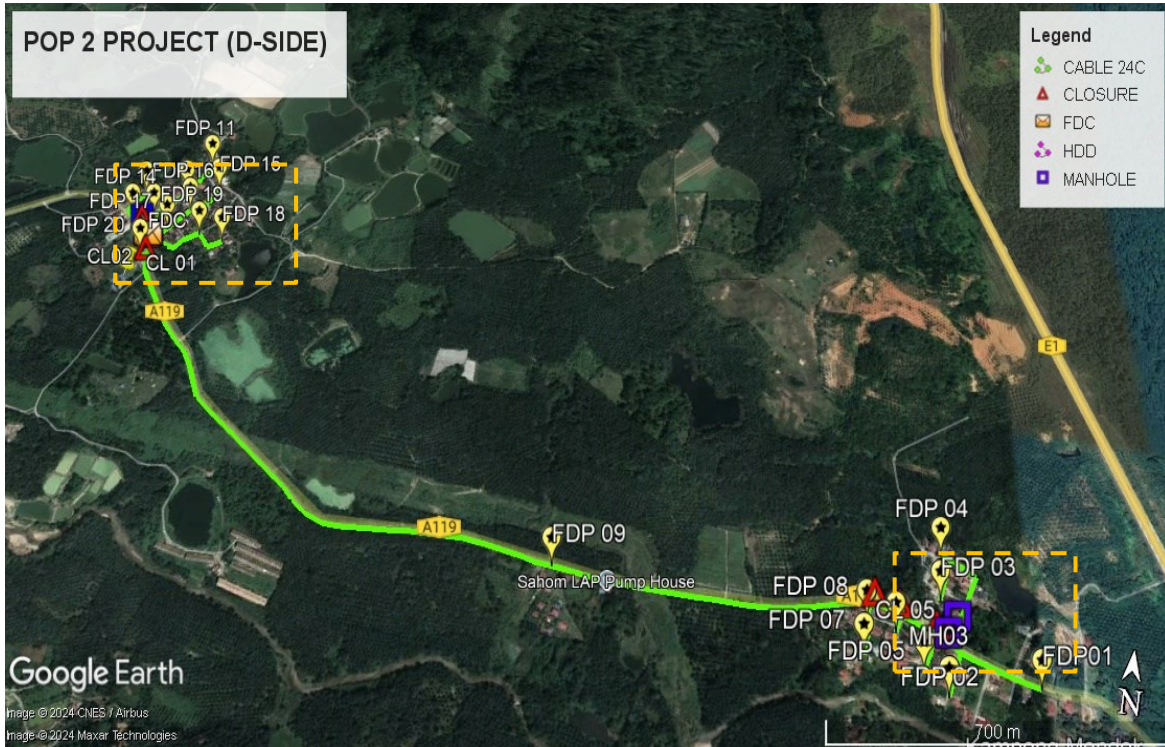


Figure 1: Location 1 (MH1- 4.393406, 101.193361) (MH2- 4.393839, 101.193050) & Location 2 (MH3 - 4.387464, 101.211316) (MH4 - 4.387773, 101.211497)

**KMZ Plan**

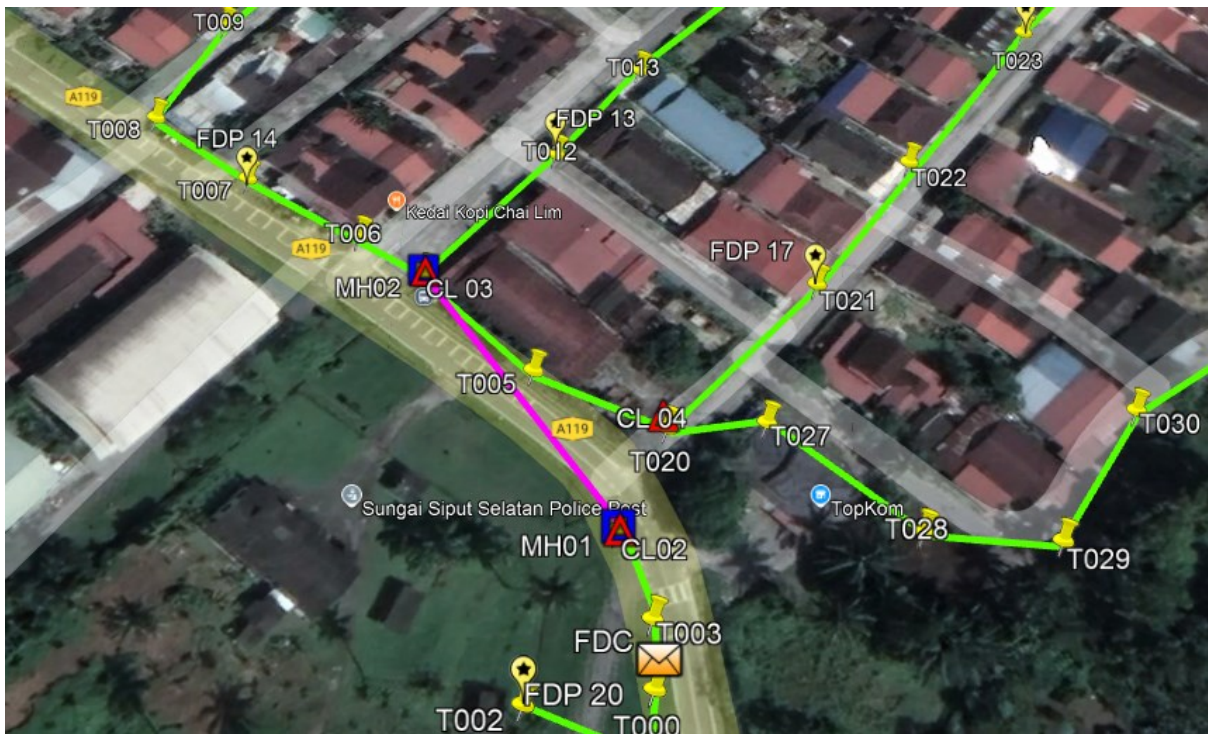


Figure 2: Location 1 (MH1- 4.393406, 101.193361) (MH2- 4.393839, 101.193050)

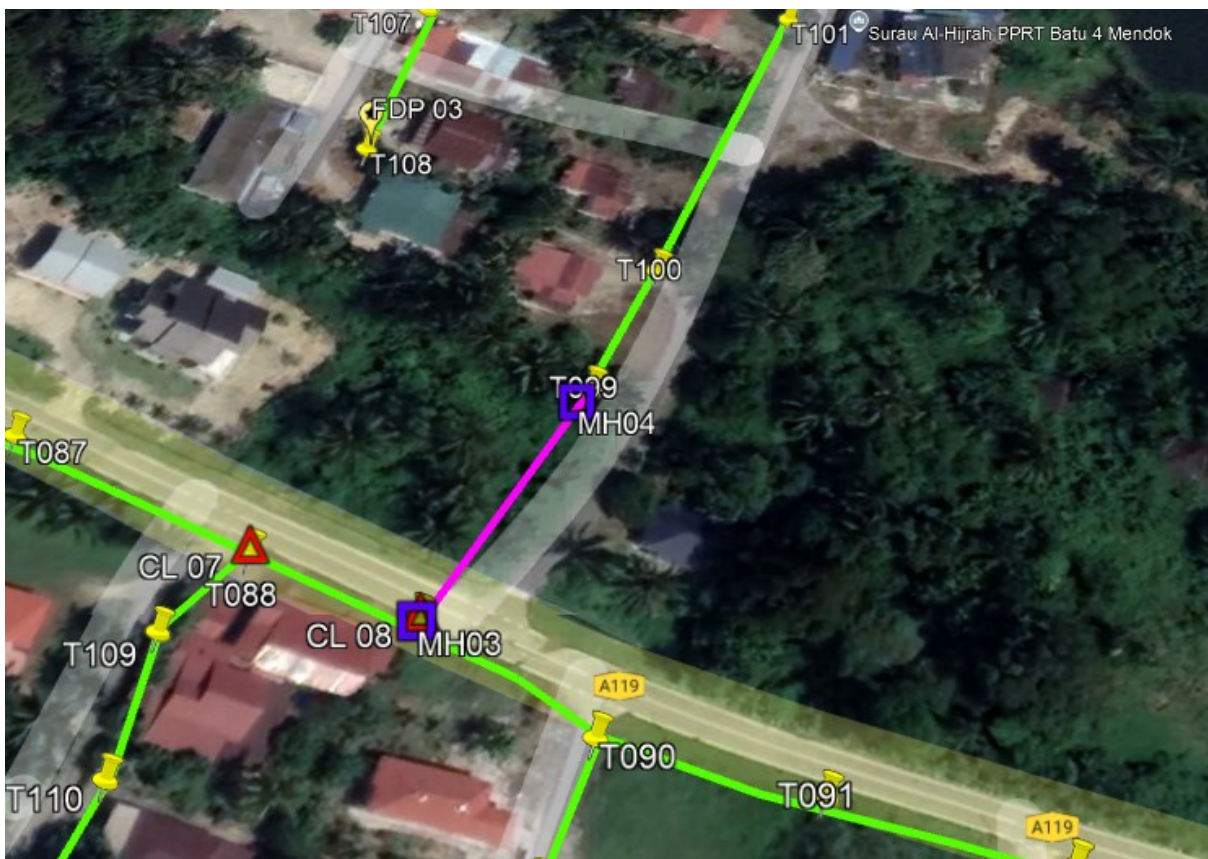
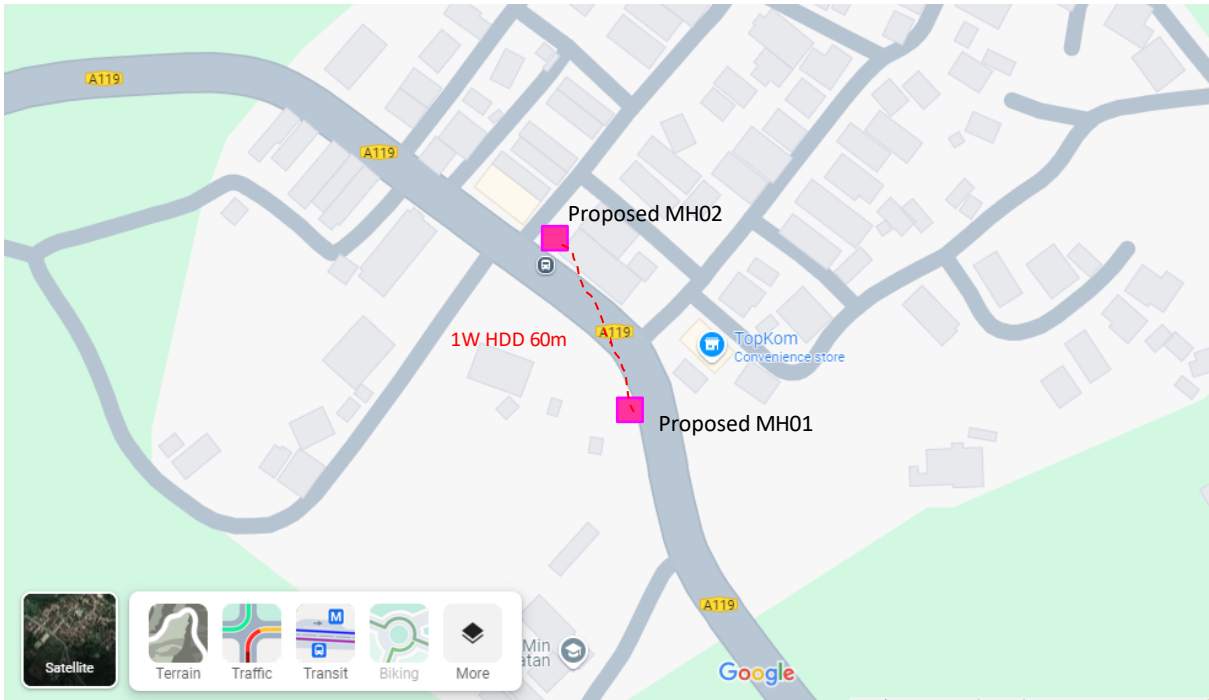


Figure 3: Location 2 (MH3 - 4.387464, 101.211316) (MH4 - 4.387773, 101.211497)

**Site Plan – Google Map (routing plan, Manhole)**





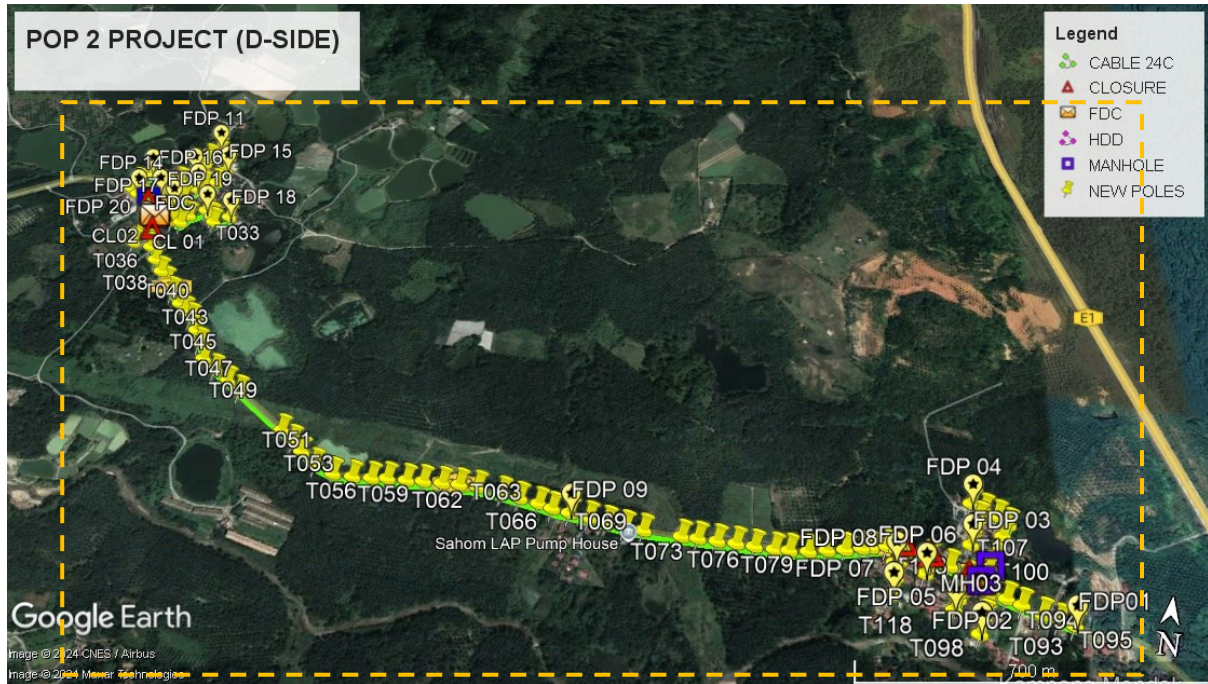
PROJEK PENYEDIAAN DAN PENYELENGGARAAN POINT OF PRESENCE (POP) FASA 2: HAB INFRASTRUKTUR GENTIAN OPTIK BERTAMBAHAN DENGAN SEKOLAH, KAWASAN PERINDUSTRIAN, PREMIS KERAJAAN DAN KOMUNITI SEKITARNYA OLEH KEMENTERIAN KOMUNIKASI MALAYSIA - ZON UTARA (KKMM.400-11/17/132(1))



**Proposed New Manhole Lat & Long Table**

PROPOSED MANHOLE COORDINATE		
MANHOLE NUMBER	LATITUDE	LONGITUDE
MH01	4.393406	101.193361
MH02	4.393839	101.193050
MH03	4.387464	101.211316
MH04	4.387773	101.211497

Site Plan – KMZ Routing (Proposed new Pole)



### Overall Pole (Proposed New)

No.	Pole & Manhole ID	Distance	Latitude	Longitude	Local Authority
1	T000	0.00	4.393179303	101.1934177	JKR Kampar
2	T001	10.51	4.393085262	101.193409	JKR Kampar
3	T002	19.89	4.393158707	101.1932461	JKR Kampar
4	T003	22.90	4.393277487	101.1934141	JKR Kampar
5	T004	15.50	4.393407136	101.1933632	JKR Kampar
6	T005	32.47	4.393667505	101.1932318	JKR Kampar
7	T006	41.90	4.393912998	101.1929465	JKR Kampar
8	T007	24.92	4.394027146	101.1927539	JKR Kampar
9	T008	23.72	4.394154199	101.1925829	JKR Kampar
10	T009	24.81	4.394362329	101.1926627	Majlis Perbandaran Kampar
11	T010	35.74	4.39461986	101.1928544	Majlis Perbandaran Kampar
12	T011	89.54	4.393840972	101.1930551	JKR Kampar
13	T012	33.86	4.394077509	101.1932463	Majlis Perbandaran Kampar
14	T013	24.98	4.394258938	101.1933783	Majlis Perbandaran Kampar
15	T014	36.18	4.39450866	101.1935863	Majlis Perbandaran Kampar
16	T015	40.37	4.394791288	101.1938135	Majlis Perbandaran Kampar
17	T016	37.56	4.395075729	101.1939949	Majlis Perbandaran Kampar
18	T017	19.73	4.395248746	101.1940332	Majlis Perbandaran Kampar
19	T018	28.36	4.395407319	101.1942326	Majlis Perbandaran Kampar
20	T019	15.49	4.395536259	101.1941804	Majlis Perbandaran Kampar
21	T020	234.19	4.393570602	101.1934307	Majlis Perbandaran Kampar
22	T021	37.73	4.393821764	101.1936583	Majlis Perbandaran Kampar
23	T022	31.97	4.394060593	101.1938178	Majlis Perbandaran Kampar
24	T023	39.79	4.394344286	101.1940352	Majlis Perbandaran Kampar
25	T024	20.16	4.394481786	101.1941531	Majlis Perbandaran Kampar
26	T025	30.83	4.394576216	101.1944135	Majlis Perbandaran Kampar
27	T026	42.44	4.394937002	101.1945366	Majlis Perbandaran Kampar



PROJEK PENYEDIAAN DAN PENYELENGGARAAN POINT OF PRESENCE (POP) FASA 2: HAB INFRASTRUKTUR GENTIAN OPTIK BERHAMPIRAN DENGAN SEKOLAH, KAWASAN PERINDUSTRIAN, PREMIS KERAJAAN DAN KOMUNITI SEKITARNYA OLEH KEMENTERIAN KOMUNIKASI MALAYSIA - ZON UTARA (KKMM.400-11/17/132(1))



28	T027	185.16	4.39357943	101.1935755	Majlis Perbandaran Kampar
29	T028	30.59	4.393406006	101.1937887	Majlis Perbandaran Kampar
30	T029	21.42	4.393392062	101.1939806	Majlis Perbandaran Kampar
31	T030	27.49	4.393599849	101.1941141	Majlis Perbandaran Kampar
32	T031	42.00	4.393784212	101.1944433	Majlis Perbandaran Kampar
33	T032	25.81	4.393639778	101.1946247	Majlis Perbandaran Kampar
34	T033	18.46	4.393499263	101.1947128	Majlis Perbandaran Kampar
35	T034	39.66	4.393676237	101.195022	Majlis Perbandaran Kampar
36	T035	190.87	4.392991996	101.1934498	JKR Kampar
37	T036	37.74	4.392670376	101.1935569	JKR Kampar
38	T037	42.53	4.392356905	101.1937753	JKR Kampar
39	T038	40.10	4.392080888	101.1940067	JKR Kampar
40	T039	33.91	4.391851615	101.1942072	JKR Kampar
41	T040	35.65	4.391605604	101.1944123	JKR Kampar
42	T041	41.95	4.39134161	101.1946812	JKR Kampar
43	T042	25.90	4.391183668	101.194852	JKR Kampar
44	T043	26.21	4.391032623	101.1950326	JKR Kampar
45	T044	38.88	4.390755906	101.1952457	JKR Kampar
46	T045	35.73	4.390475526	101.1954019	JKR Kampar
47	T046	46.13	4.390121318	101.1956171	JKR Kampar
48	T047	41.95	4.389908604	101.1959281	JKR Kampar
49	T048	46.34	4.389682952	101.196278	JKR Kampar
50	T049	39.16	4.389495574	101.1965757	JKR Kampar
51	T050	148.06	4.388763045	101.1976858	JKR Kampar
52	T051	38.24	4.388570738	101.1979705	JKR Kampar
53	T052	35.14	4.388365584	101.1982104	JKR Kampar
54	T053	44.12	4.388140487	101.1985366	JKR Kampar
55	T054	47.50	4.387995374	101.1989379	JKR Kampar
56	T055	44.03	4.387986831	101.1993333	JKR Kampar
57	T056	41.46	4.388006941	101.1997052	JKR Kampar
58	T057	34.70	4.388042709	101.2000149	JKR Kampar
59	T058	41.87	4.388055667	101.2003908	JKR Kampar
60	T059	36.53	4.388077585	101.2007182	JKR Kampar
61	T060	41.18	4.388087383	101.201088	JKR Kampar
62	T061	37.59	4.388102694	101.2014253	JKR Kampar
63	T062	40.20	4.388099275	101.2017864	JKR Kampar
64	T063	54.58	4.38804671	101.2022738	JKR Kampar
65	T064	40.01	4.38798425	101.2026278	JKR Kampar
66	T065	43.29	4.38792508	101.2030121	JKR Kampar



PROJEK PENYEDIAAN DAN PENYELENGGARAAN POINT OF PRESENCE (POP) FASA 2: HAB INFRASTRUKTUR GENTIAN OPTIK BERHAMPIRAN DENGAN SEKOLAH, KAWASAN PERINDUSTRIAN, PREMIS KERAJAAN DAN KOMUNITI SEKITARNYA OLEH KEMENTERIAN KOMUNIKASI MALAYSIA - ZON UTARA (KKMM.400-11/17/132(1))



67	T066	30.80	4.38786364	101.2032819	JKR Kampar
68	T067	38.81	4.387817776	101.2036275	JKR Kampar
69	T068	42.31	4.387770594	101.2040047	JKR Kampar
70	T069	39.68	4.387724165	101.204358	JKR Kampar
71	T070	38.96	4.387681431	101.2047054	JKR Kampar
72	T071	39.65	4.387659198	101.2050608	JKR Kampar
73	T072	81.08	4.387639532	101.2057889	JKR Kampar
74	T073	34.58	4.387643727	101.2060995	JKR Kampar
75	T074	40.47	4.38763801	101.2064631	JKR Kampar
76	T075	39.74	4.387639942	101.20682	JKR Kampar
77	T076	38.58	4.387629071	101.2071665	JKR Kampar
78	T077	41.19	4.387622258	101.2075365	JKR Kampar
79	T078	31.05	4.38763714	101.207815	JKR Kampar
80	T079	40.05	4.387664864	101.2081736	JKR Kampar
81	T080	39.04	4.387732208	101.2085178	JKR Kampar
82	T081	37.31	4.387791459	101.2088477	JKR Kampar
83	T082	35.55	4.387861472	101.2091593	JKR Kampar
84	T083	18.94	4.38789717	101.2093256	JKR Kampar
85	T084	34.55	4.387957534	101.20963	JKR Kampar
86	T085	34.51	4.387990161	101.2099383	JKR Kampar
87	T086	54.81	4.38786056	101.2104133	JKR Kampar
88	T087	43.90	4.387729448	101.2107852	JKR Kampar
89	T088	40.44	4.387560967	101.211107	JKR Kampar
90	T089	25.64	4.387473674	101.2113202	JKR Kampar
91	T090	29.50	4.387322804	101.211538	JKR Kampar
92	T091	30.30	4.387251968	101.2118008	JKR Kampar
93	T092	31.68	4.387172401	101.212074	JKR Kampar
94	T093	42.52	4.387042063	101.212433	JKR Kampar
95	T094	32.98	4.38696884	101.2127201	JKR Kampar
96	T095	32.05	4.386909924	101.2130019	JKR Kampar
97	T096	171.64	4.38715041	101.2114789	Majlis Perbandaran Kampar
98	T097	33.92	4.386863439	101.2113765	Majlis Perbandaran Kampar
99	T098	37.49	4.386537788	101.2112908	Majlis Perbandaran Kampar
100	T099	142.71	4.387799346	101.2115188	Majlis Perbandaran Kampar
101	T100	22.98	4.387988351	101.2116017	Majlis Perbandaran Kampar
102	T101	55.94	4.388453064	101.2117929	Majlis Perbandaran Kampar
103	T102	29.78	4.38869632	101.2119042	Majlis Perbandaran Kampar
104	T103	27.15	4.388833827	101.2117028	Majlis Perbandaran Kampar

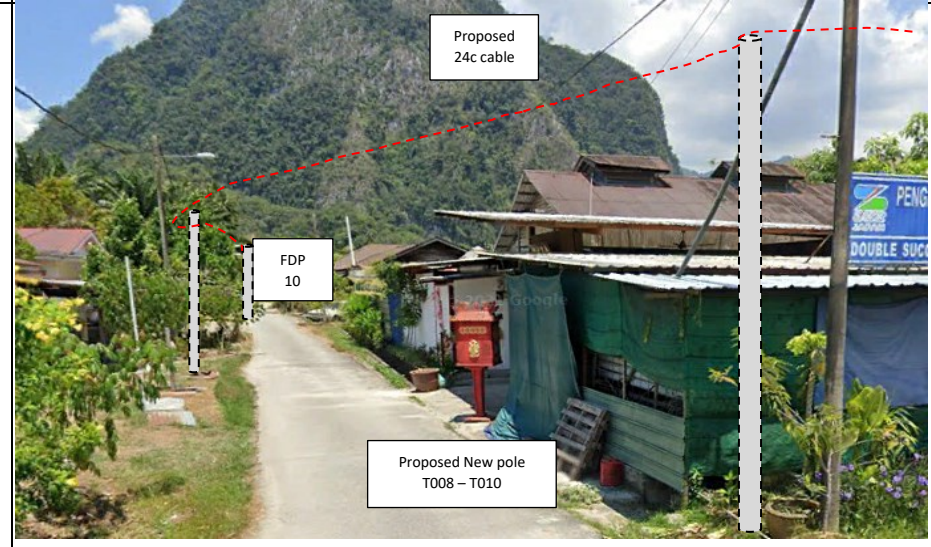
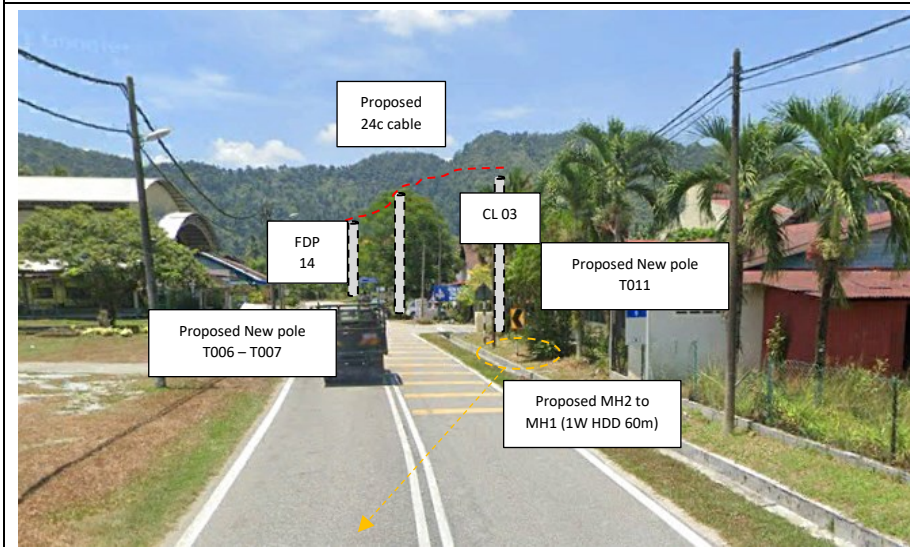
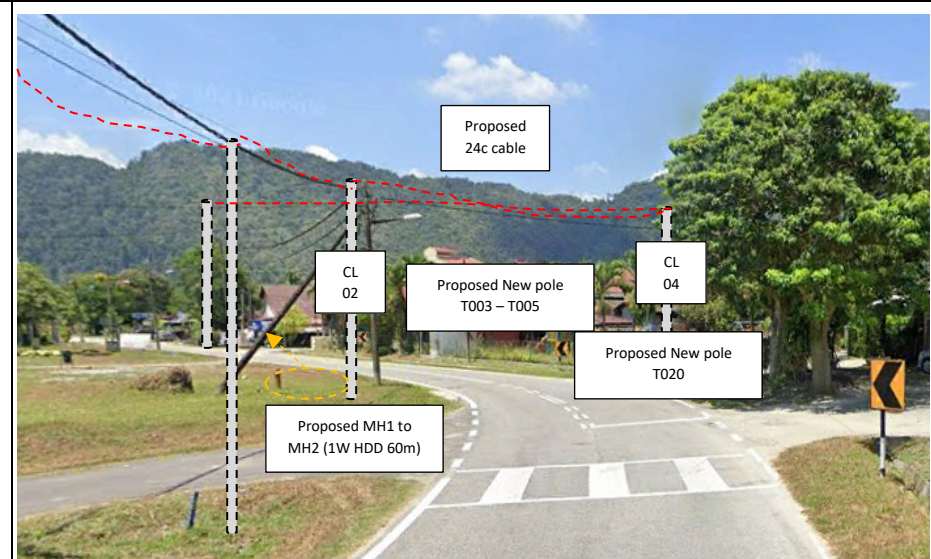
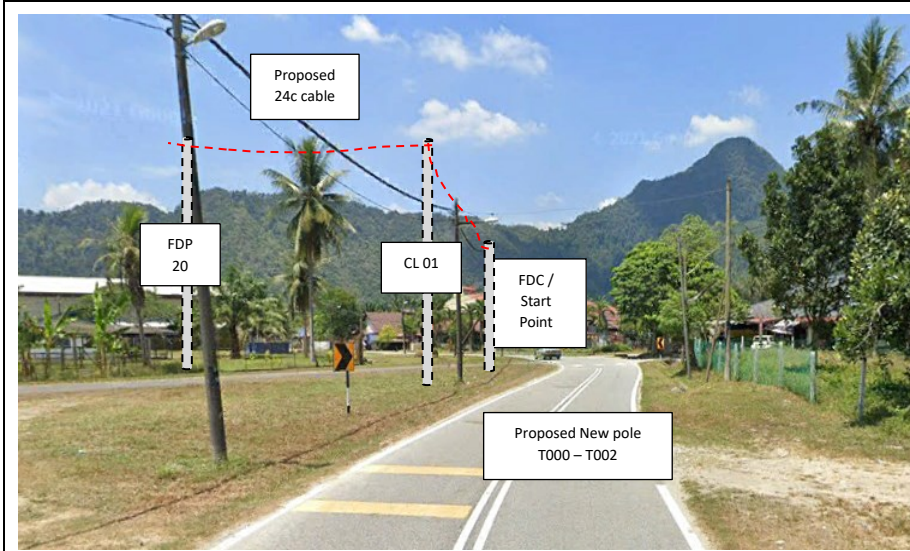


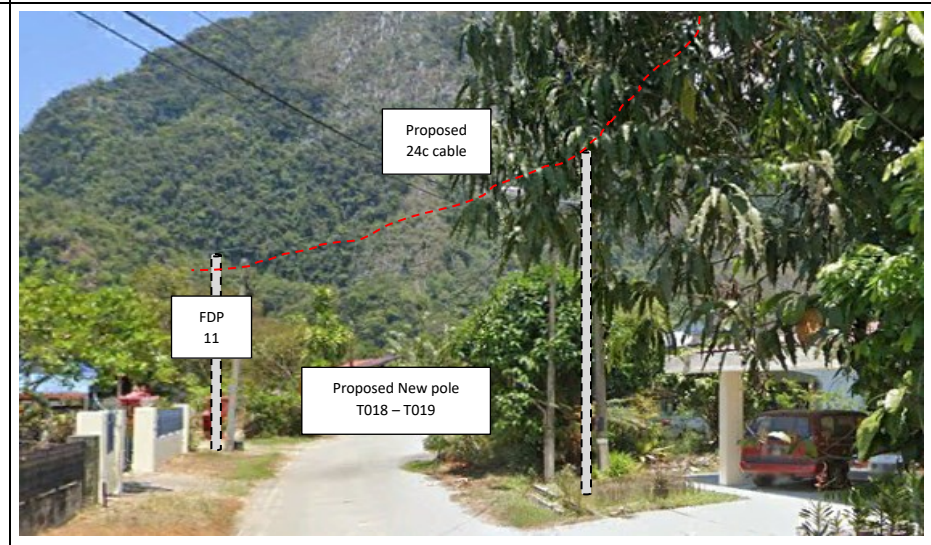
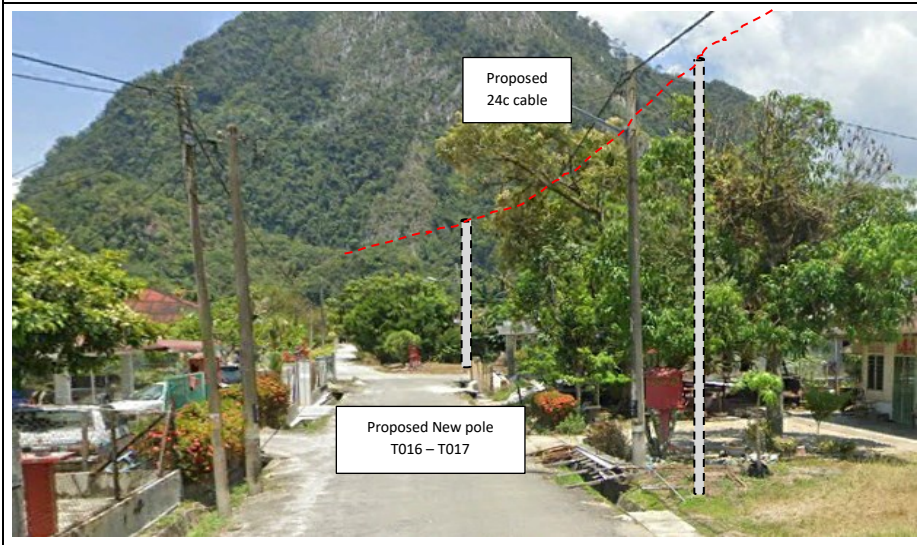
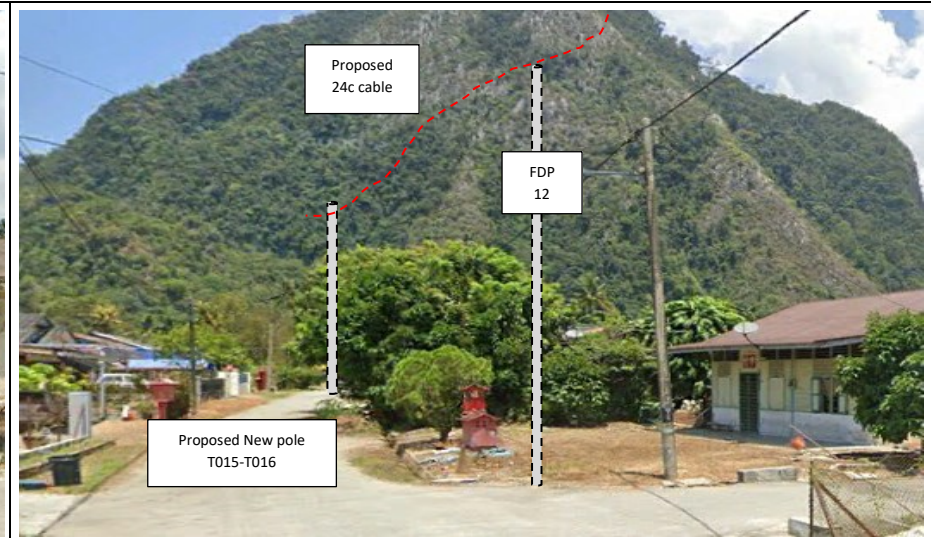
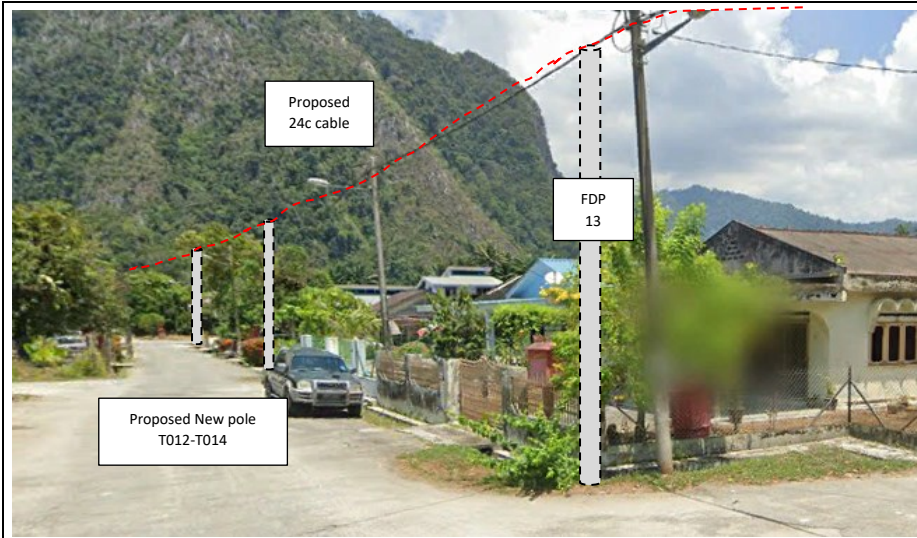
PROJEK PENYEDIAAN DAN PENYELENGGARAAN POINT OF PRESENCE (POP) FASA 2: HAB INFRASTRUKTUR GENTIAN OPTIK BERHAMPIRAN DENGAN SEKOLAH, KAWASAN PERINDUSTRIAN, PREMIS KERAJAAN DAN KOMUNITI SEKITARNYA OLEH KEMENTERIAN KOMUNIKASI MALAYSIA - ZON UTARA (KKMM.400-11/17/132(1))

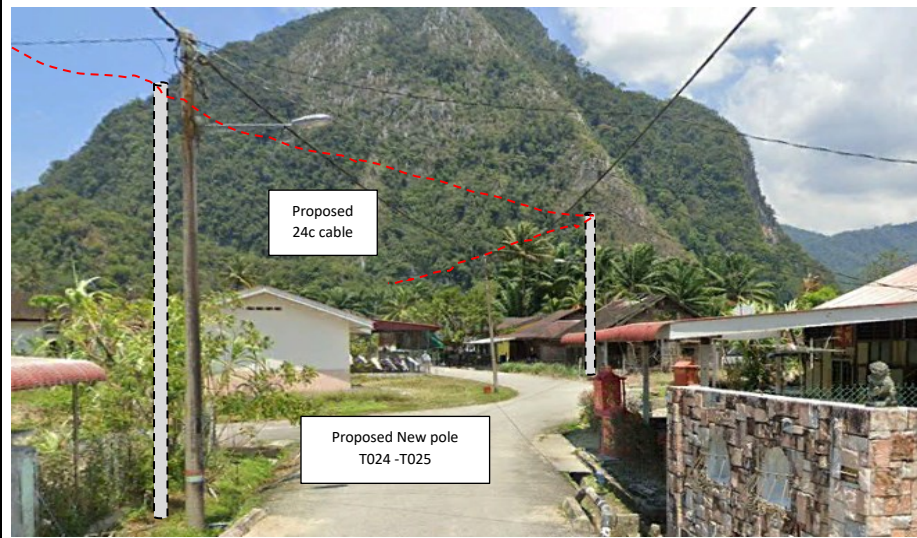
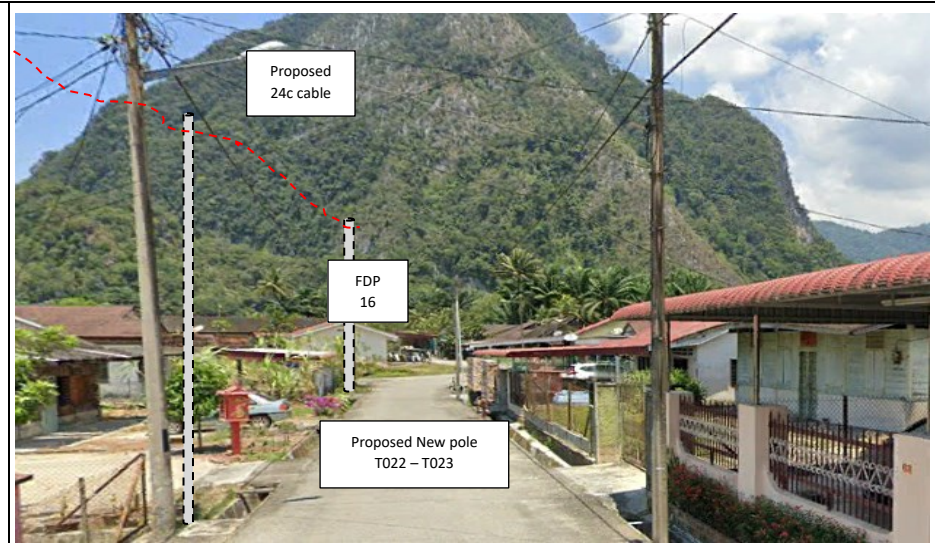
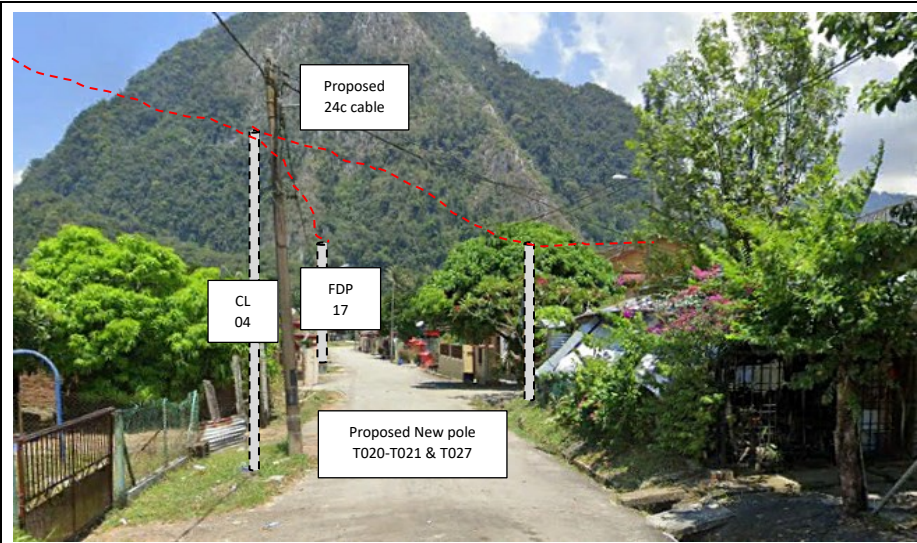


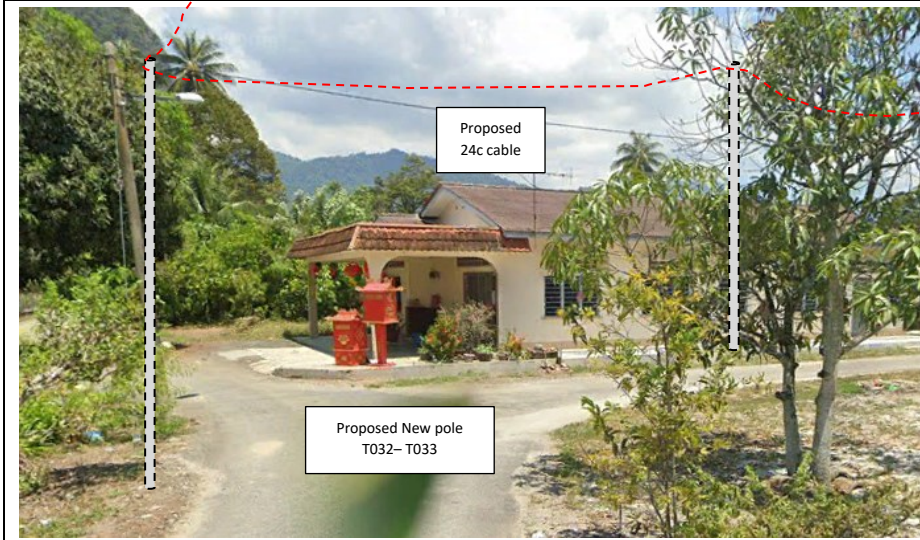
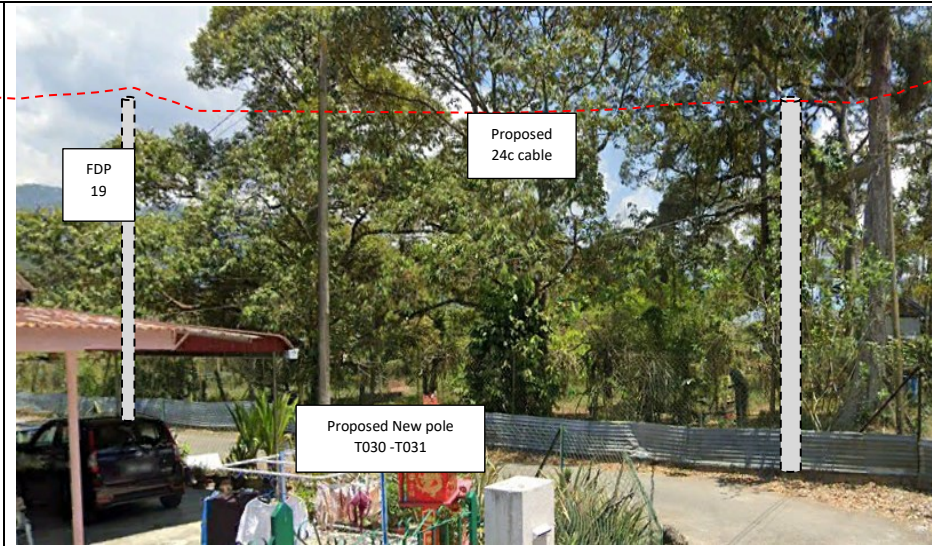
105	T104	29.38	4.388931383	101.2114576	Majlis Perbandaran Kampar
106	T105	28.49	4.389031236	101.211222	Majlis Perbandaran Kampar
107	T106	34.18	4.38875334	101.2113525	Majlis Perbandaran Kampar
108	T107	32.99	4.388474174	101.211253	Majlis Perbandaran Kampar
109	T108	31.11	4.388202445	101.2111877	Majlis Perbandaran Kampar
110	T109	85.34	4.387456293	101.2110117	Majlis Perbandaran Kampar
111	T110	20.75	4.387272376	101.2109812	Majlis Perbandaran Kampar
112	T111	16.28	4.387136939	101.2109261	Majlis Perbandaran Kampar
113	T112	25.95	4.386919903	101.2108411	Majlis Perbandaran Kampar
114	T113	98.18	4.387665103	101.2103694	Majlis Perbandaran Kampar
115	T114	15.96	4.387527687	101.2103284	Majlis Perbandaran Kampar
116	T115	69.01	4.387894368	101.2098286	Majlis Perbandaran Kampar
117	T116	25.32	4.387674156	101.2097718	Majlis Perbandaran Kampar
118	T117	32.96	4.387378638	101.2097905	Majlis Perbandaran Kampar
119	T118	35.82	4.387064413	101.2097213	Majlis Perbandaran Kampar

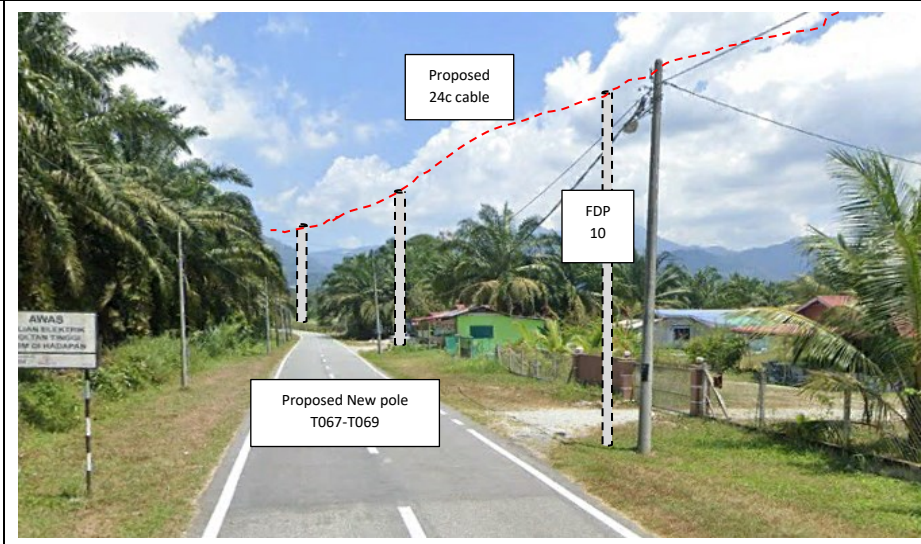
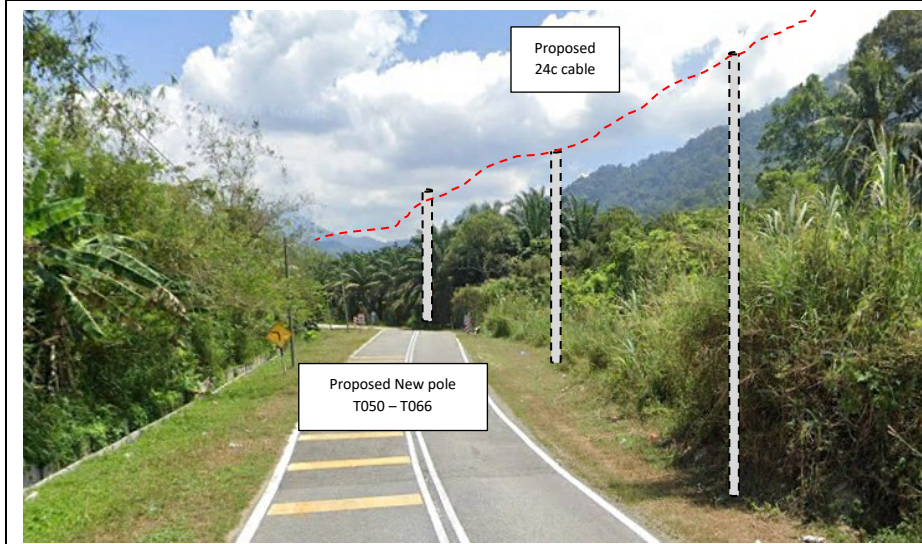
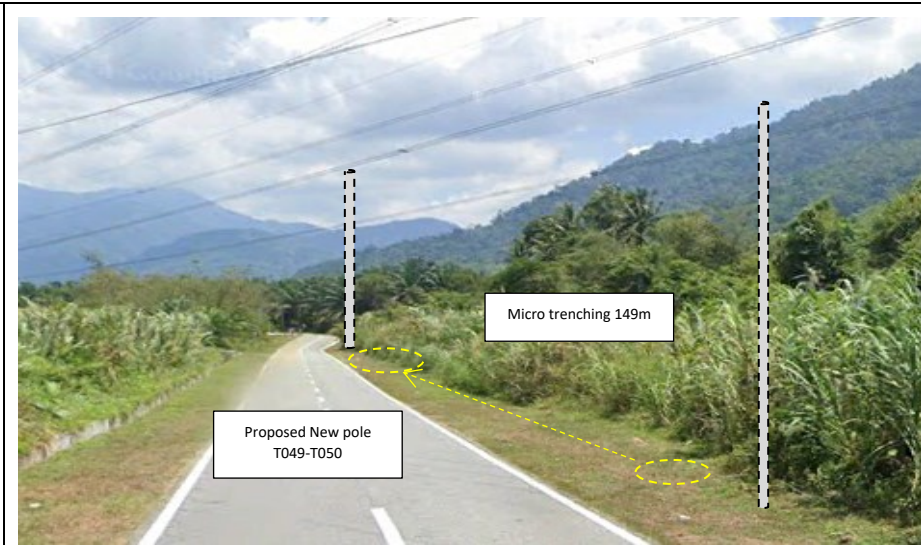
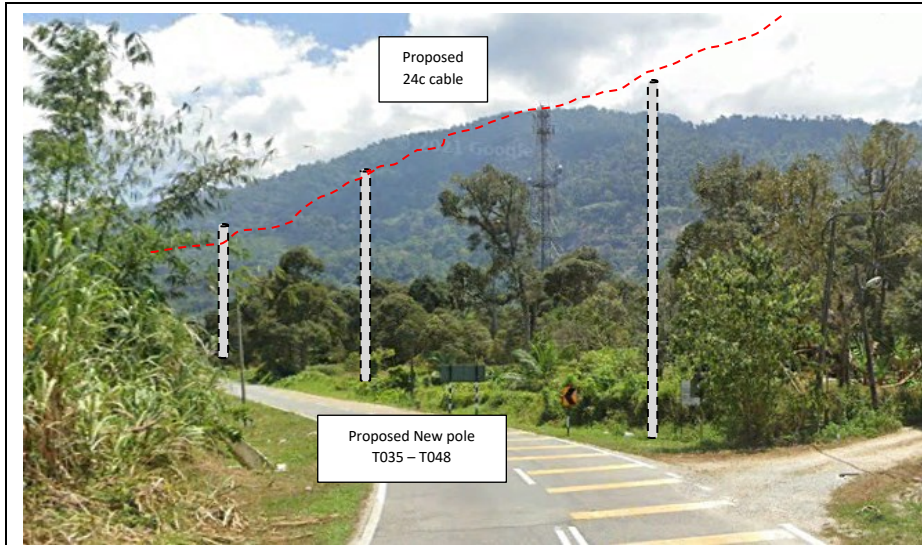
Site Photos – Proposed to install pole

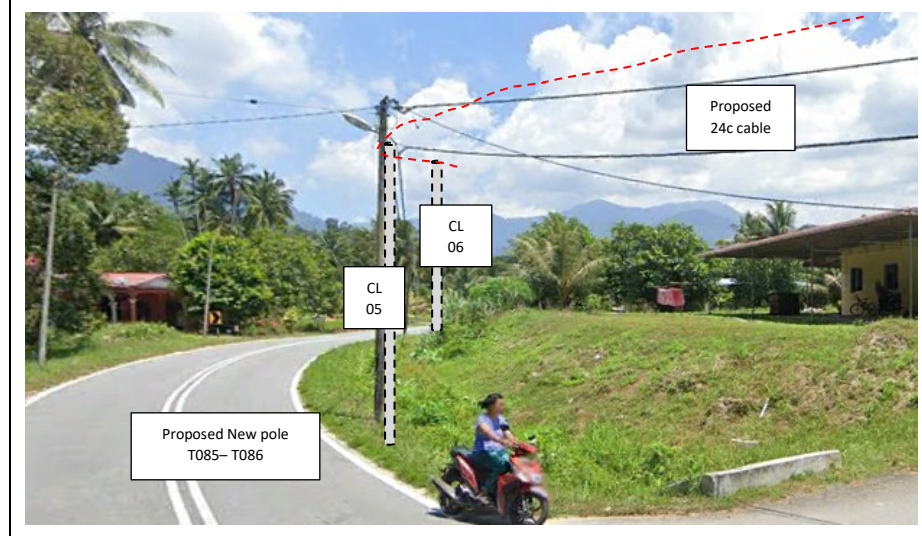
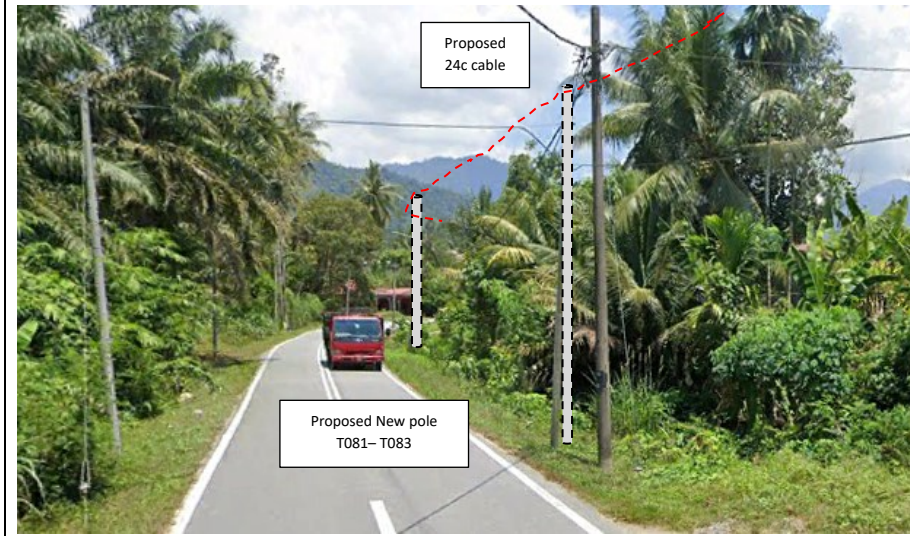
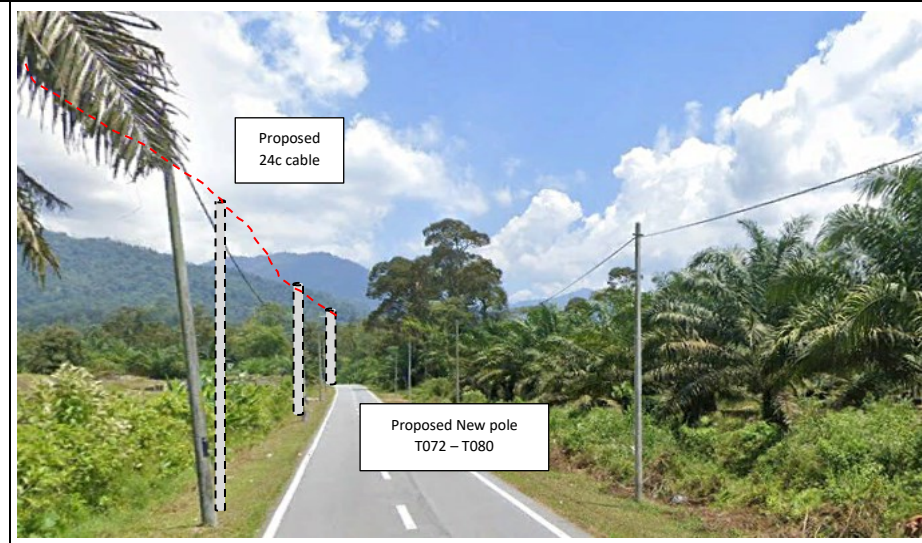
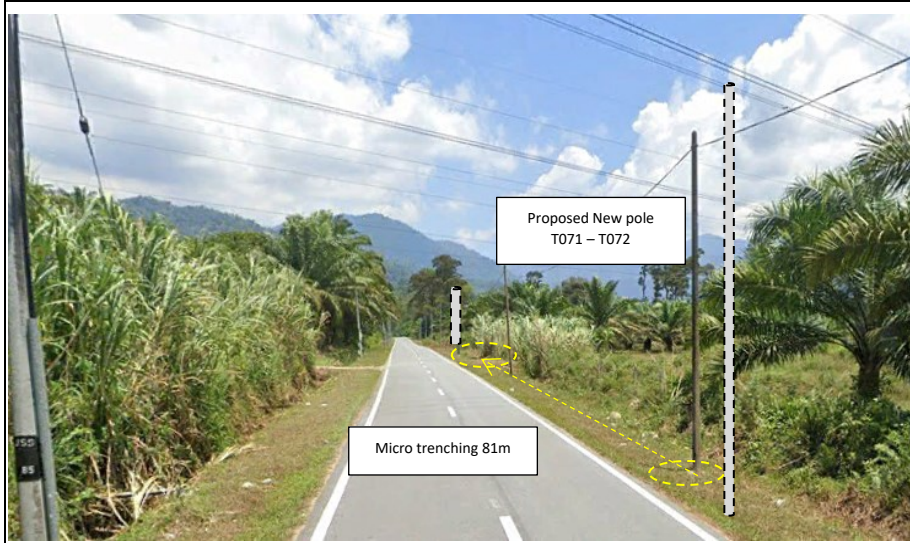


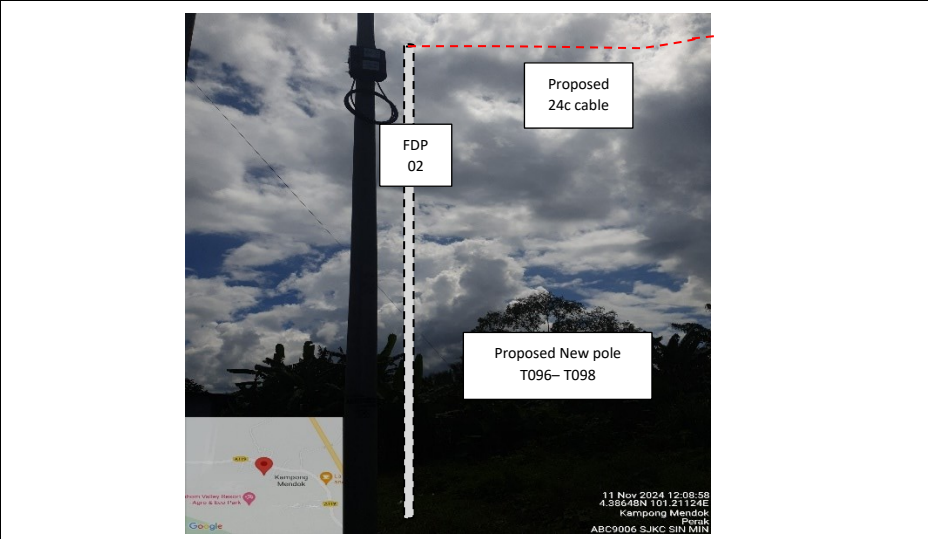
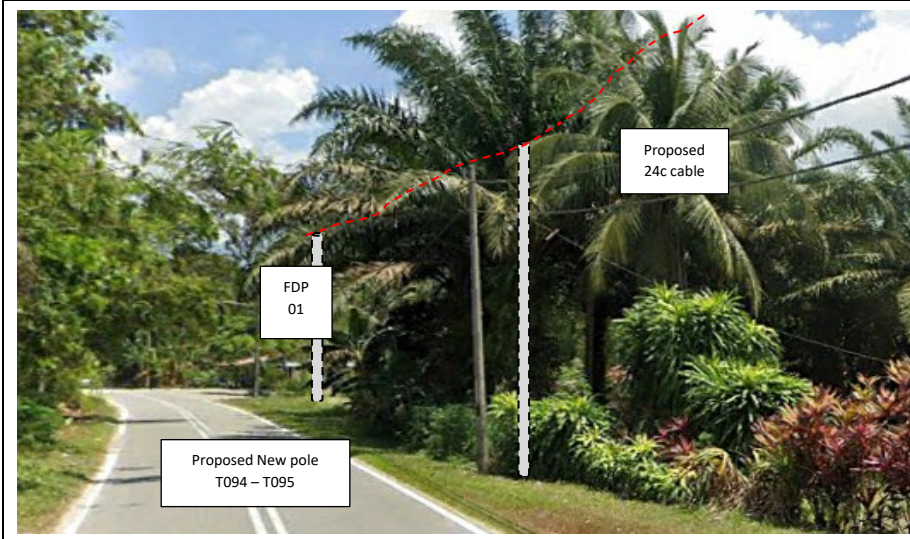
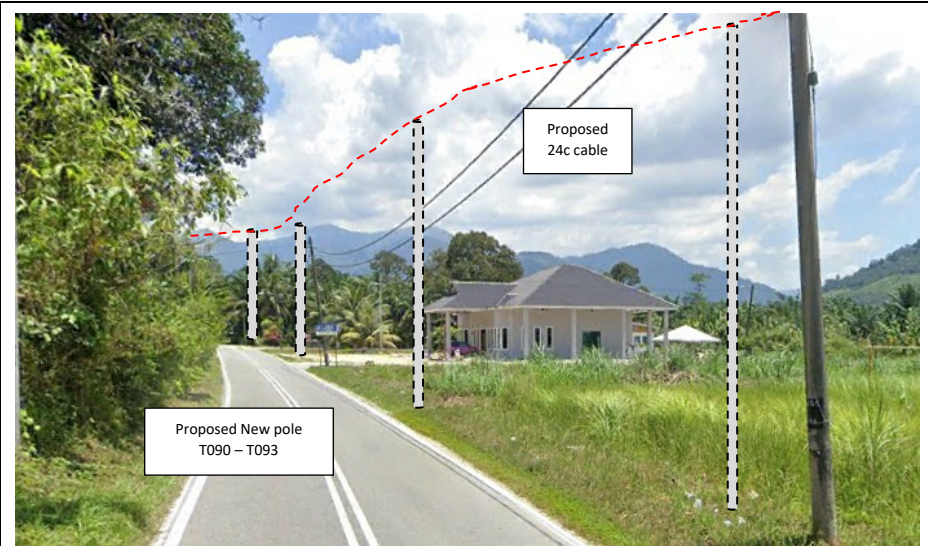
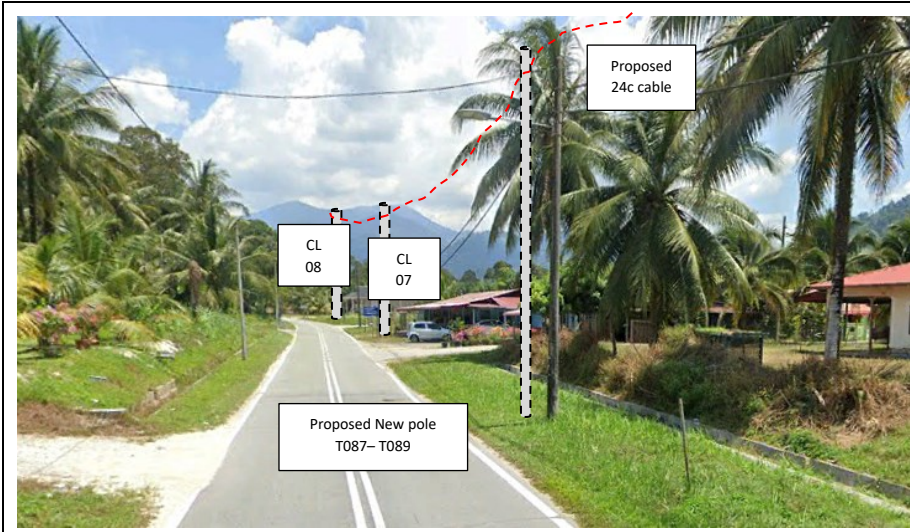


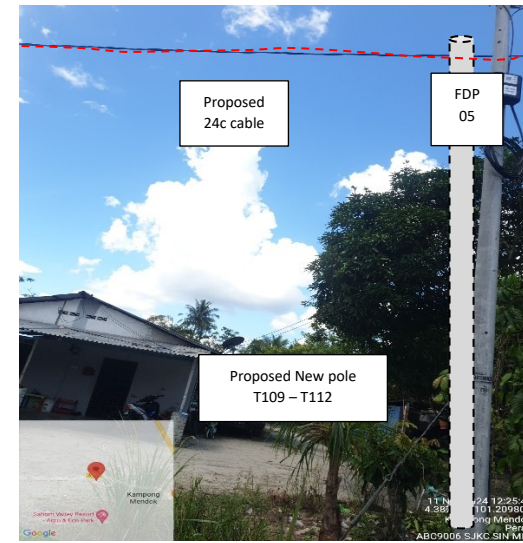
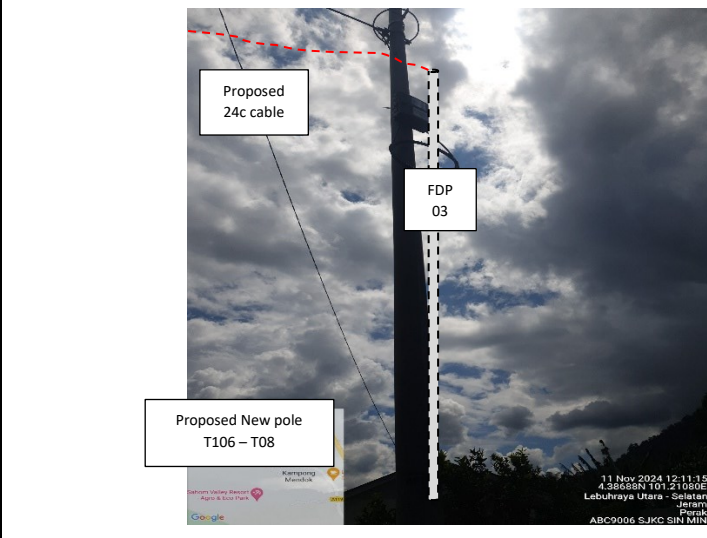
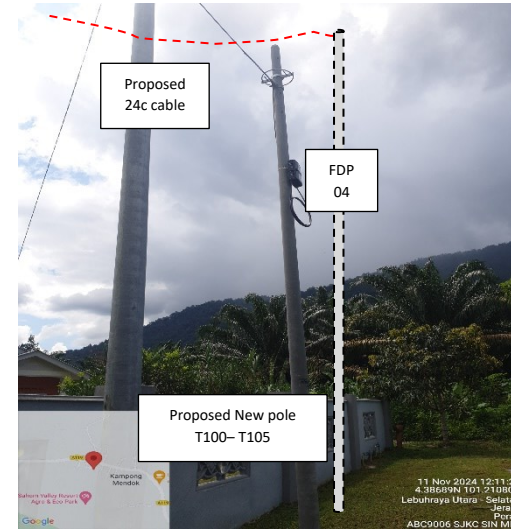
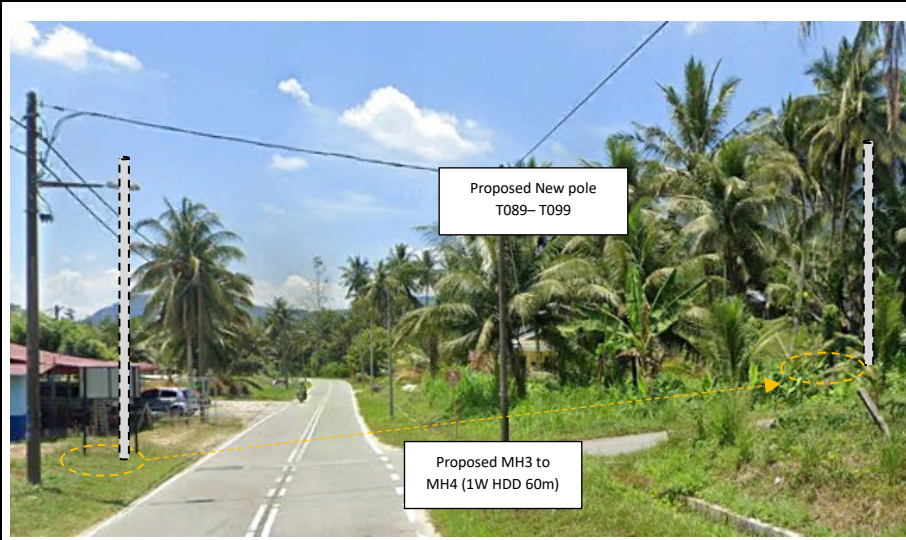


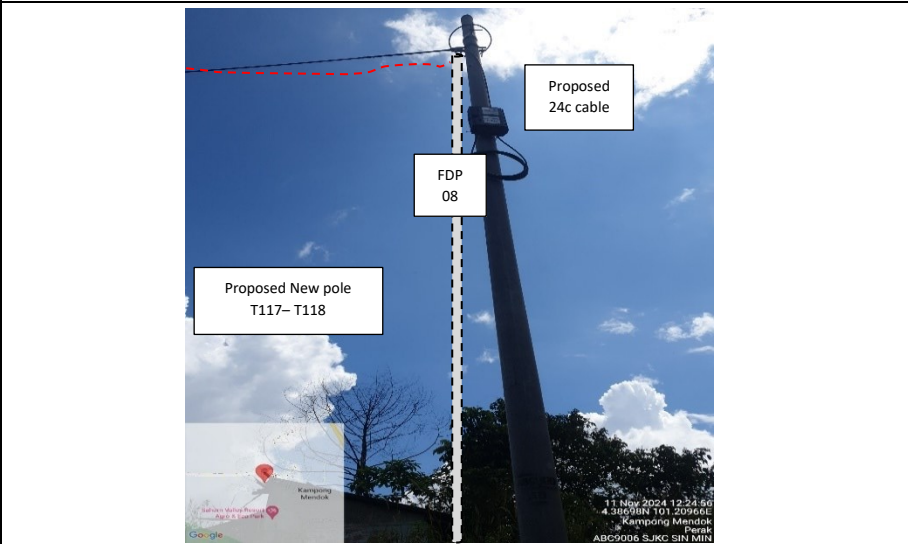
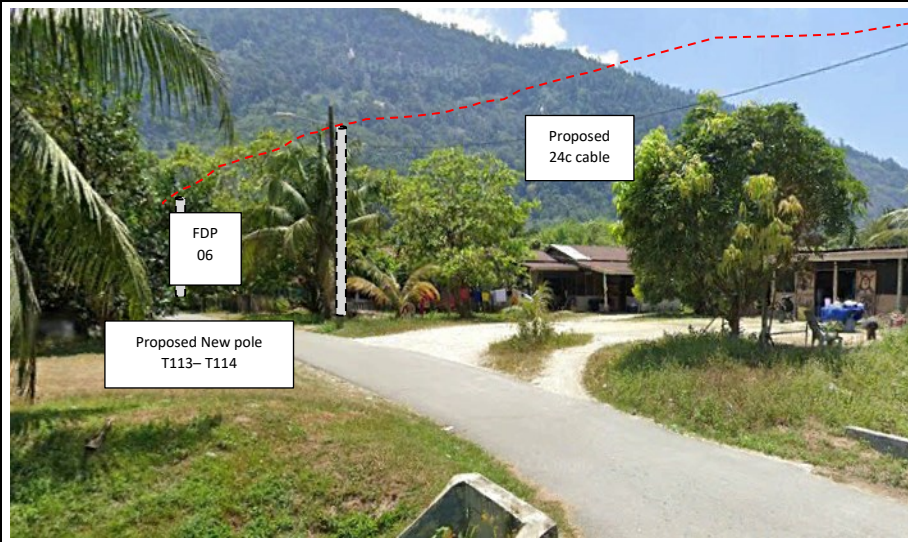












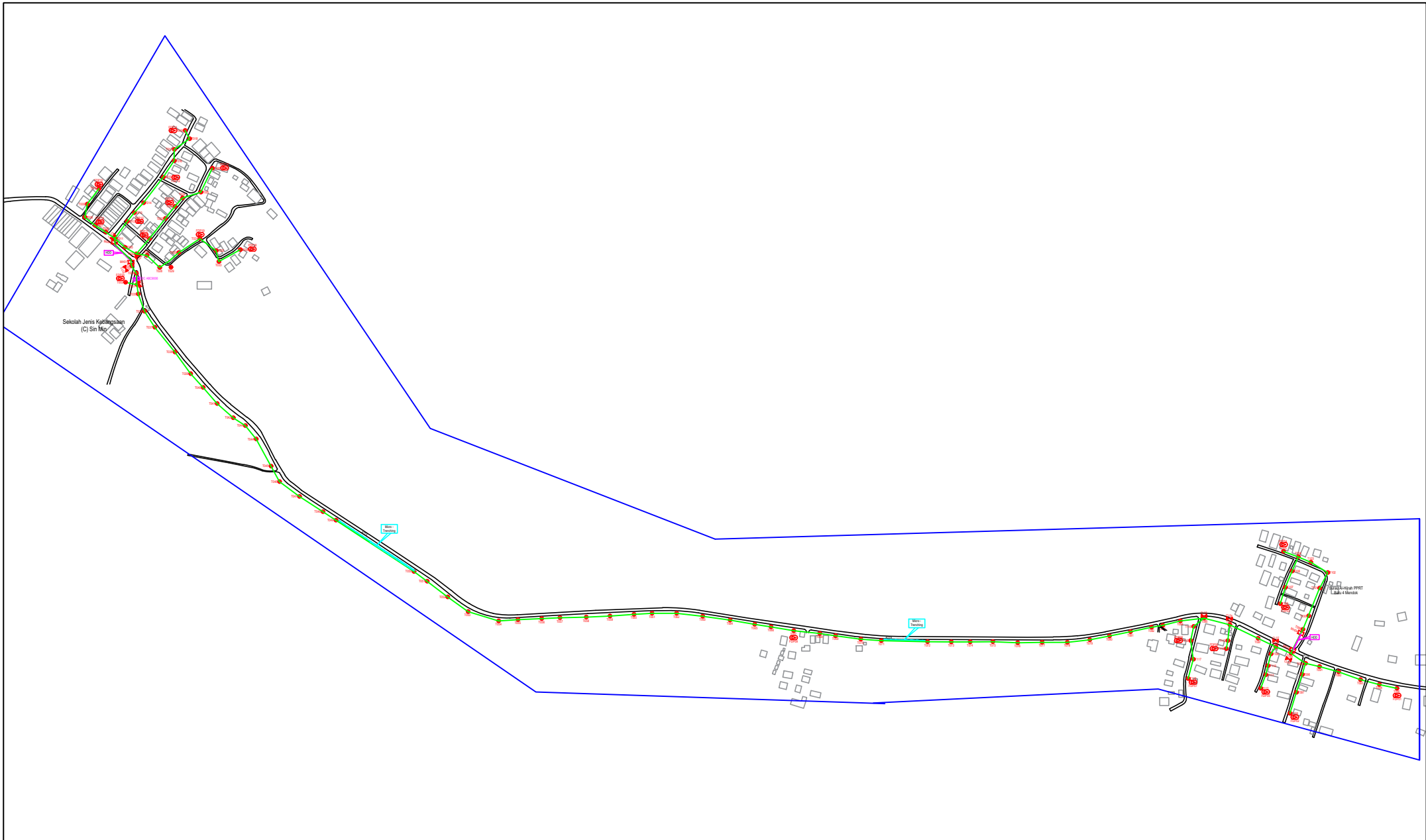


PROJEK PENYEDIAAN DAN PENYELENGGARAAN POINT OF PRESENCE (POP) FASA 2: HAB INFRASTRUKTUR GENTIAN OPTIK BERHAMPIRAN DENGAN SEKOLAH, KAWASAN PERINDUSTRIAN, PREMIS KERAJAAN DAN KOMUNITI SEKITARNYA OLEH KEMENTERIAN KOMUNIKASI MALAYSIA - ZON UTARA (KKMM.400-11/17/132(1))



### 3rd Parties Dependencies

No.	Local Council/ Authority	Remark
1	JKR Kampar	
2	Majlis Perbandaran Kampar	
3		
4		
5		
6		



LEGEND	NOS.	NOS.	NOS.	NOS.	NOS.	NOS.	NOS.	NOS.	NOS.	NOS.	NOS.		
12C FOC		Installed 1:4 / 1:8 / 1:32 splitter		Installed Pole (9m)		Suspension		New Manhole (PIT)		Micro-Trenching (Meter)	230	MHI	MH NO.
24C FOC	4036	Installed Patch Cord		Installed Pole (7.5M)	118	Tension		New Manhole(JRC7)	4	Temporary Infra (Meter)		TKS-1	Existing TNB Pole NO.
48C FOC		FDC	1	Installed Pole (6.7M)		Pole Ring		FDP Boundary		Loop / Coil (Meter)		P001	New Pole NO.
96C FOC		Closure	8	Existing TNB Pole		FDP with (1:8) splitter	20	HDD (Meter)	78	Active Outdoor Cabinet		CL01	Closure NO.
144C FOC		Existing Closure		Installed Riser		Existing Manhole		Open Cut (Meter)		FDC NO.		DP1	FDP NO.

ACTUAL HOMEPASS :

KEY PLAN :

POP2 PROJECT IN PERAK

OWNER/DEVELOPER :

MAIN CONTRACTOR :

WCWL COMMUNICATIONS SDN BHD  
127, JALAN PAU 3/3, TAMAN PUNCAK JAYA,  
BANDAR PUTRA PERAI,  
43100 SERI KEMBANGAN, SELANGOR  
TEL: +603 9583 9583  
E-MAIL: info@wcwlcommunications.com.my

PROJECT TITLE :

CONTRACTOR FOR SURVEY, TECHNICAL PROPOSAL AND WAYLEAVE, & PERMIT APPROVAL - POP2 PROJECT

DRAWING TITLE:

AS-BUILT SITE PLAN DRAWING ABC9006 SEKOLAH JENIS KEBANGSAAN (CINA) SIN MIN

PROJECT PHASE: POP 2

Design By : ENGINEER Date : NOV 2024

Drawn By : CAD ENGINEER Scale : NOT TO SCALE

Checked By : ENGINEER Job Number : 1

DRAWING NUMBER : ABC9006-ABD-01

Sheet : 1/5

THIS PRINT AND ITS COPYRIGHT ARE THE PROPERTY OF APEX COMMUNICATIONS SDN BHD

Size : A3

Design By : ENGINEER Date : NOV 2024

Drawn By : CAD ENGINEER Scale : NOT TO SCALE

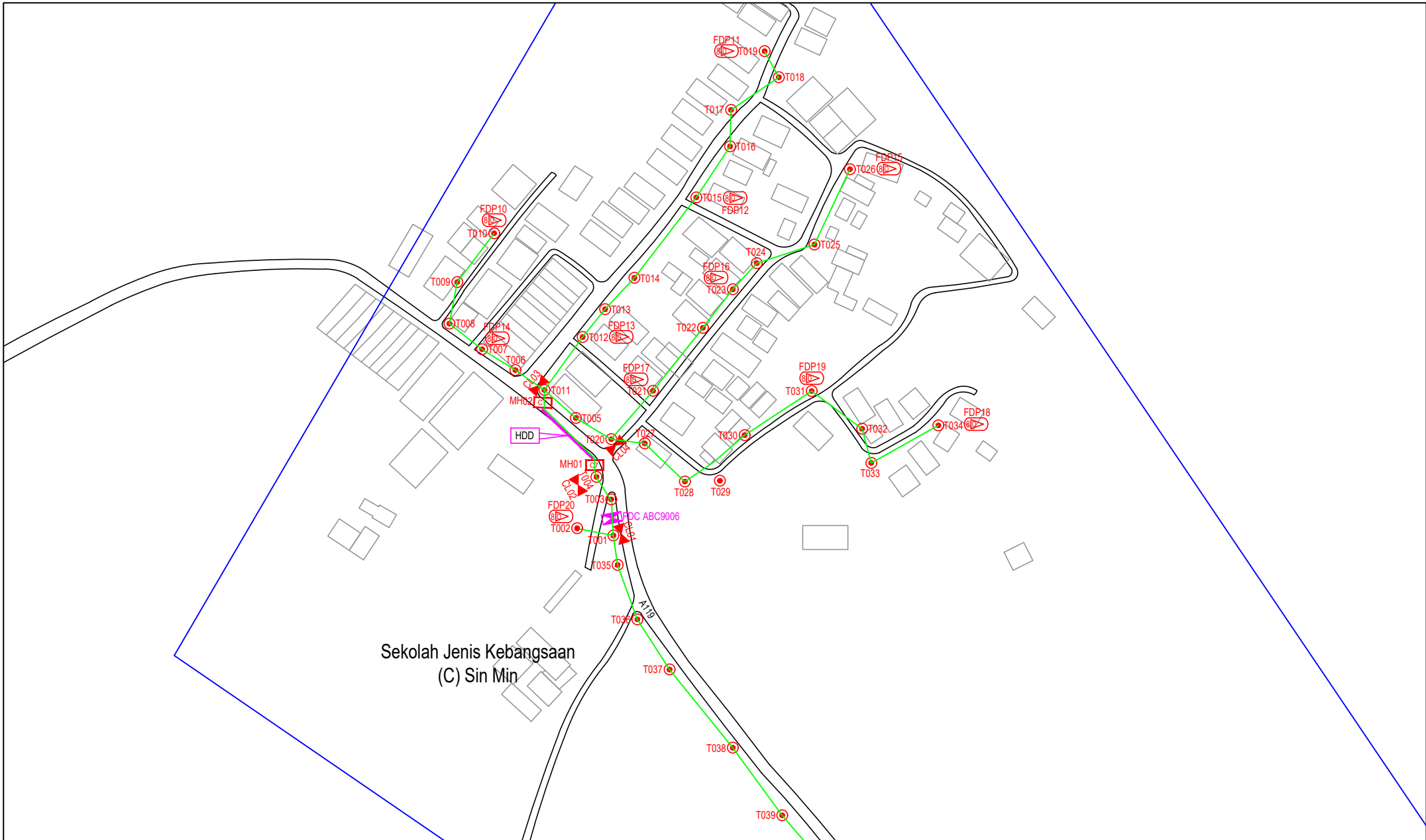
Checked By : ENGINEER Job Number : 1

DRAWING NUMBER : ABC9006-ABD-01

Sheet : 1/5

THIS PRINT AND ITS COPYRIGHT ARE THE PROPERTY OF APEX COMMUNICATIONS SDN BHD

Size : A3



Sekolah Jenis Kebangsaan  
(C) Sin Min

ACTUAL HOMEPASS :

LEGEND	NOS.	NOS.	NOS.	NOS.	NOS.	NOS.	NOS.	NOS.	NOS.
12C FOC		Installed 1:4 / 1:8 / 1:32 splitter		Installed Pole (9m)		Suspension		Micro-Trenching (Meter)	
24C FOC	4036	Installed Patch Cord		Installed Pole (7.5M)	118	Tension		Temporary Infra (Meter)	230
48C FOC		FDC	1	Installed Pole (6.7M)		Pole Ring		Loop / Coil (Meter)	
96C FOC		Closure	8	Existing TNB Pole		FDP Boundary		Active Outdoor Cabinet	
144C FOC		Existing Closure		Installed Riser		HDD (Meter)	20	FDC NO.	
				Existing Manhole		Open Cut (Meter)		MH1	MH NO.
								TKS-1	Existing TNB Pole NO.
								P001	New Pole NO.
								CL01	Closure NO.
								DP1	FDP NO.

KEY PLAN :  
  
POP2 PROJECT IN PERAK

OWNER/DEVELOPER :

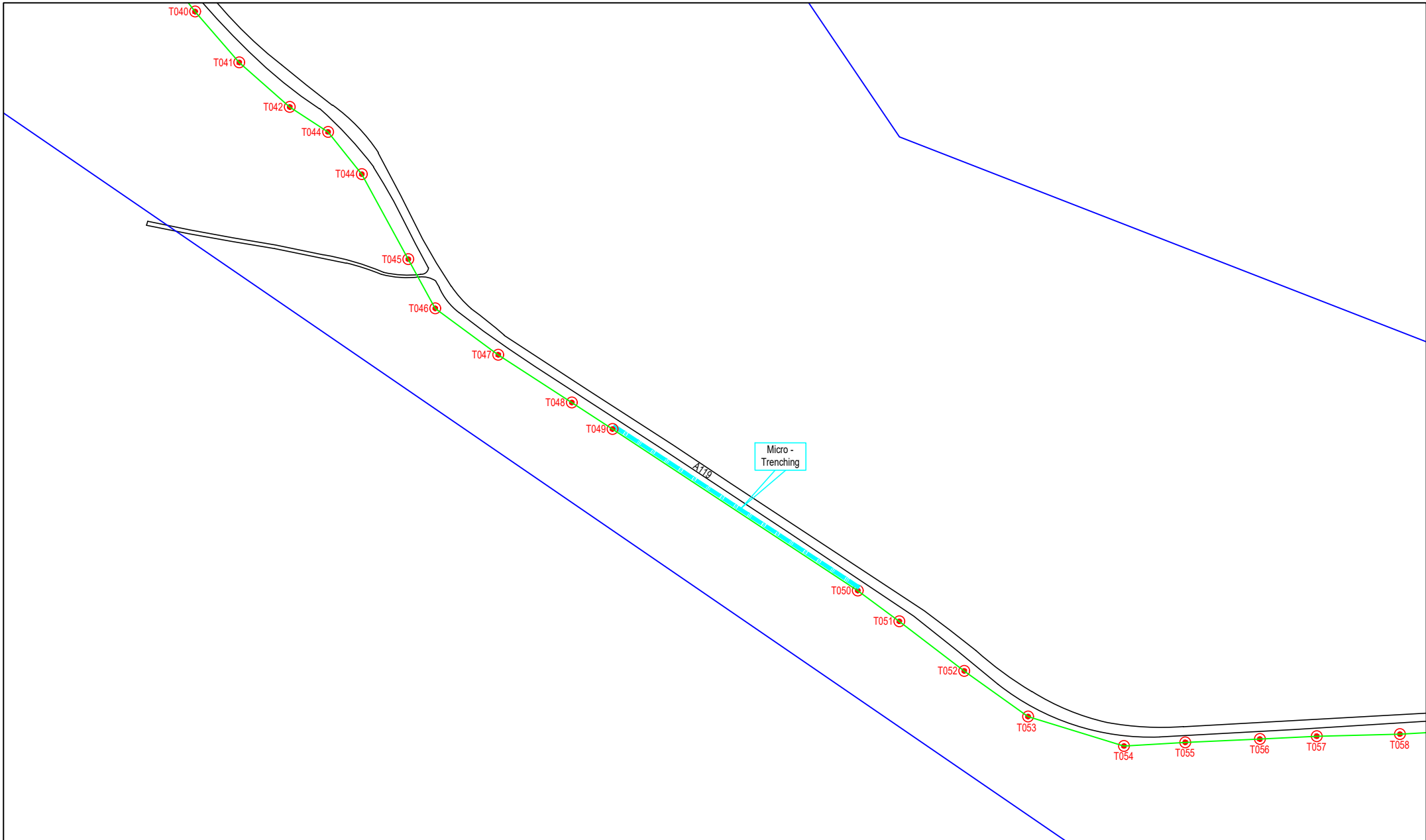
MAIN CONTRACTOR :

WCWL COMMUNICATIONS SDN BHD  
127, JALAN PAU 3/3, TAMAN PUNCAK JALIL,  
MUKAH, PUTRA PERANG,  
43300 SERI KEMBANGAN, SELANGOR  
TEL : +603 9088 9083  
E-MAIL : info@wcwlcommunications.com.my

PROJECT TITLE :  
  
CONTRACTOR FOR SURVEY, TECHNICAL PROPOSAL AND WAYLEAVE, & PERMIT APPROVAL - POP2 PROJECT

DRAWING TITLE:  
AS-BUILT SITE PLAN DRAWING ABC9006  
SEKOLAH JENIS KEBANGSAAN (CINA) SIN MIN  
PROJECT PHASE:  
POP 2

Design By : ENGINEER	Date : NOV 2024
Drawn By : CAD ENGINEER	Scale : NOT TO SCALE
Checked By : ENGINEER	Job Number : 1
DRAWING NUMBER : ABC9006-ABD-01A	Sheet : 2/5
THIS PRINT AND ITS COPYRIGHT ARE THE PROPERTY OF APEX COMMUNICATIONS SDN BHD	
Size : A3	

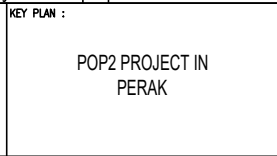


LEGEND	NOS.	NOS.	NOS.	NOS.	NOS.	NOS.	NOS.	NOS.	NOS.				
12C FOC		Installed 1:4 / 1:8 / 1:32 splitter		Installed Pole (9m)		Suspension		New Manhole (PIT)		Micro-Trenching (Meter)	230	MHI	MH NO.
24C FOC	4036	Installed Patch Cord		Installed Pole (7.5M)	118	Tension		New Manhole(JRC7)	4	Temporary Infra (Meter)		TKS-1	Existing TNB Pole NO.
48C FOC		FDC	1	Installed Pole (6.7M)		Pole Ring		FDP Boundary		Loop / Coil (Meter)		P001	New Pole NO.
96C FOC		Closure	8	Existing TNB Pole		FDP with (1:8) splitter	20	HDD (Meter)	78	#		CL01	Closure NO.
144C FOC		Existing Closure		Installed Riser		Existing Manhole		Open Cut (Meter)		Active Outdoor Cabinet		DP1	FDP NO.

ACTUAL HOMEPASS :

KEY PLAN :

POP2 PROJECT IN PERAK



OWNER/DEVELOPER :

MAIN CONTRACTOR :

WCWL COMMUNICATIONS SDN BHD  
127, JALAN PAU 3/3, TAMAN PUNCAK JAYA,  
MUKAH, PUTRA PERANG,  
43300 SERI KEMBANGAN, SELANGOR  
TEL: +603 9088 9083  
E-MAIL: info@wcwlcommunications.com.my

PROJECT TITLE :

CONTRACTOR FOR SURVEY, TECHNICAL PROPOSAL AND WAYLEAVE, & PERMIT APPROVAL - POP2 PROJECT

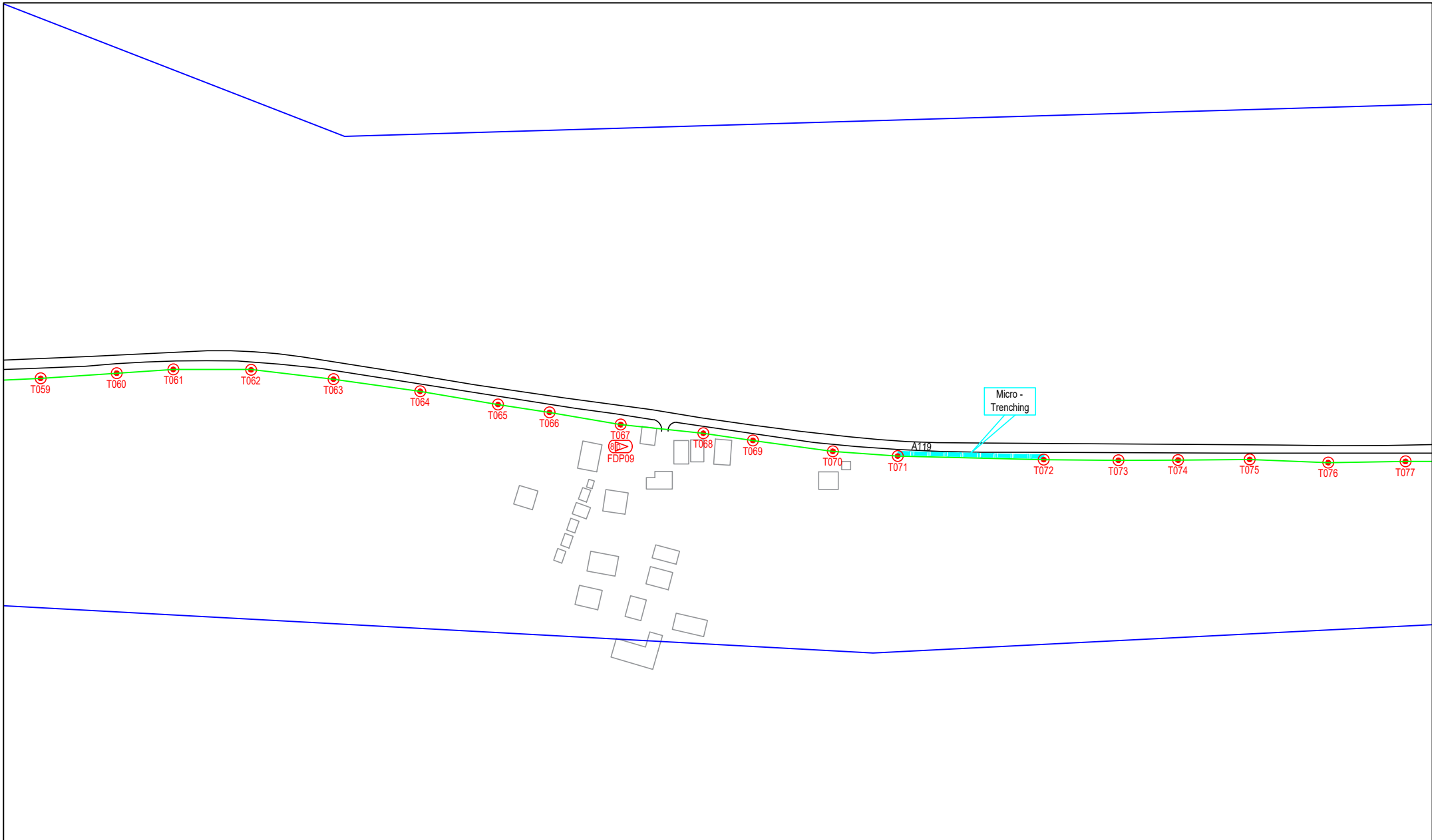
DRAWING TITLE:

AS-BUILT SITE PLAN DRAWING ABC9006  
SEKOLAH JENIS KEBANGSAAN (CINA) SIN MIN

PROJECT PHASE:

POP 2

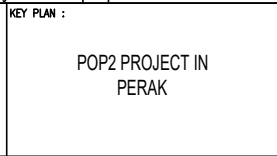
Design By : ENGINEER	Date : NOV 2024
Drawn By : CAD ENGINEER	Scale : NOT TO SCALE
Checked By : ENGINEER	Job Number : 1
DRAWING NUMBER :	Sheet :
ABC9006-ABD-01B	3/5
THIS PRINT AND ITS COPYRIGHT ARE THE PROPERTY OF APEX COMMUNICATIONS SDN BHD	
Size : A3	



LEGEND	NOS.	NOS.	NOS.	NOS.	NOS.	NOS.	NOS.	NOS.	NOS.	NOS.			
12C FOC		Installed 1:4 / 1:8 / 1:32 splitter		Installed Pole (9m)		Suspension		New Manhole (PIT)		Micro-Trenching (Meter)		MHI	MH NO.
24C FOC	4036	Installed Patch Cord		Installed Pole (7.5M)	118	Tension		New Manhole(JRC7)	4	Temporary Infra (Meter)		TKS-1	Existing TNB Pole NO.
48C FOC		FDC	1	Installed Pole (6.7M)		Pole Ring		FDP Boundary		Loop / Coil (Meter)		P001	New Pole NO.
96C FOC		Closure	8	Existing TNB Pole		FDP with (1:8) splitter	20	HDD (Meter)	78	Active Outdoor Cabinet		CL01	Closure NO.
144C FOC		Existing Closure		Installed Riser		Existing Manhole		Open Cut (Meter)		FDC NO.		DP1	FDP NO.

ACTUAL HOMEPASS :

KEY PLAN :  
  
POP2 PROJECT IN PERAK



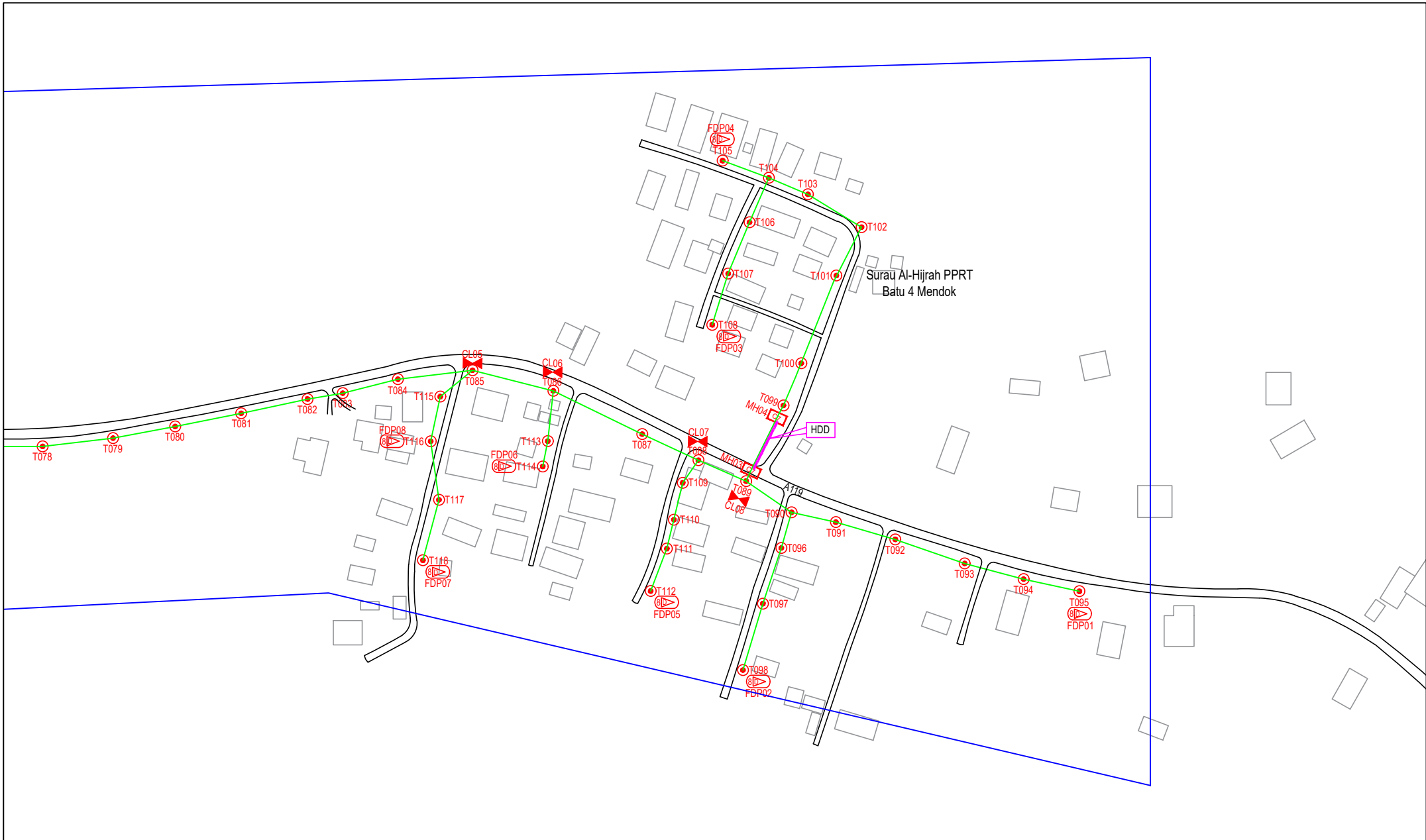
OWNER/DEVELOPER :

MAIN CONTRACTOR :  
**WCWL COMMUNICATIONS SDN BHD**  
127, JALAN PAU 3/3, TAMAN PUNCAK JAYA,  
MUKAH, PUTRA PERANG,  
43300 SERI KEMBANGAN, SELANGOR  
TEL : +603 9383 9363  
E-MAIL : info@wcwcommunications.com.my

PROJECT TITLE :  
CONTRACTOR FOR SURVEY, TECHNICAL PROPOSAL AND WAYLEAVE, & PERMIT APPROVAL - POP2 PROJECT

DRAWING TITLE:  
AS-BUILT SITE PLAN DRAWING ABC9006  
SEKOLAH JENIS KEBANGSAAN (CINA) SIN MIN  
PROJECT PHASE:  
POP 2

Design By : ENGINEER	Date : NOV 2024
Drawn By : CAD ENGINEER	Scale : NOT TO SCALE
Checked By : ENGINEER	Job Number : 1
DRAWING NUMBER : ABC9006-ABD-01C	Sheet : 4/5
THIS PRINT AND ITS COPYRIGHT ARE THE PROPERTY OF APEX COMMUNICATIONS SDN BHD	
Size : A3	



LEGEND	NOS.	NOS.	NOS.	NOS.	NOS.	NOS.	NOS.	NOS.	NOS.				
12C FOC		Installed 1:4 / 1:8 / 1:32 splitter		Installed Pole (9m)		Suspension		New Manhole (PIT)		Micro-Trenching (Meter)		MHI	MH NO.
24C FOC	4036	Installed Patch Cord		Installed Pole (7.5M)	118	Tension		New Manhole(JRC7)	4	Temporary Infra (Meter)		TKS-1	Existing TNB Pole NO.
48C FOC		FDC	1	Installed Pole (6.7M)		Pole Ring		FDP Boundary		Loop / Coil (Meter)		P001	New Pole NO.
96C FOC		Closure	8	Existing TNB Pole		FDP with (1:8) splitter	20	HDD (Meter)	78	Active Outdoor Cabinet		CL01	Closure NO.
144C FOC		Existing Closure		Installed Riser		Existing Manhole		Open Cut (Meter)		FDC NO.		DP1	FDP NO.

ACTUAL HOMEPASS :

KEY PLAN :

POP2 PROJECT IN PERAK

OWNER/DEVELOPER :

MAIN CONTRACTOR :

WCWL COMMUNICATIONS SDN BHD  
127, JALAN PAU 3/2, TAMAN PUNCAK JAYA,  
MUKAH, PUTRA PERANG,  
43300 SERI KEMBANGAN, SELANGOR  
TEL: +603 9083 9083  
E-MAIL: info@wcwlcommunications.com.my

PROJECT TITLE :

CONTRACTOR FOR SURVEY, TECHNICAL PROPOSAL AND WAYLEAVE, & PERMIT APPROVAL - POP2 PROJECT

DRAWING TITLE:

AS-BUILT SITE PLAN DRAWING ABC9006  
SEKOLAH JENIS KEBANGSAAN (CINA) SIN MIN

PROJECT PHASE:

POP 2

Design By : ENGINEER	Date : NOV 2024
Drawn By : CAD ENGINEER	Scale : NOT TO SCALE
Checked By : ENGINEER	Job Number : 1
DRAWING NUMBER : ABC9006-ABD-01D	Sheet : 5/5
THIS PRINT AND ITS COPYRIGHT ARE THE PROPERTY OF APEX COMMUNICATIONS SDN BHD	
Size : A3	