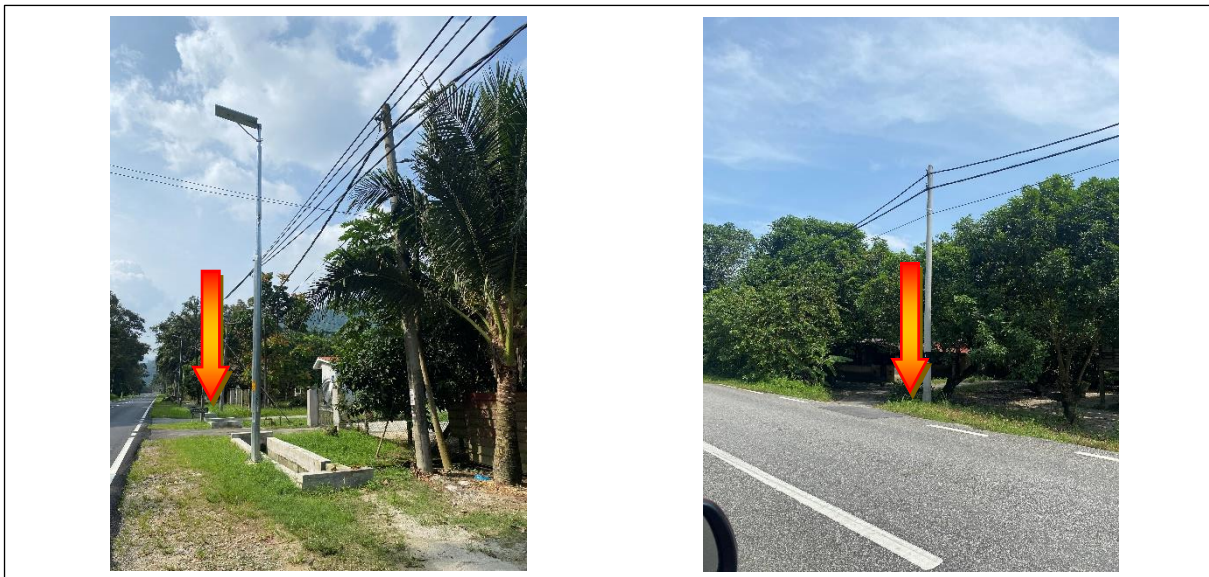


TECHNICAL PROPOSAL

POP2 ABA6015 SEKOLAH KEBANGSAAN PADANG GAJAH (D/SIDE)

Company Name : Quality Expansion Sdn. Bhd.
Company Address : Lot 1332, Mukim 11, Jalan Nyior Sebatang, 13300 Tasek Gelugor,
Pulau Pinang
Prepared By : Muhammad Jazli bin Muhammad
Date : 01/08/2024



POINT A

POINT B

Starting Point

Site / Boundary Name	:	Pantai Remis
Address	:	Jalan Beruas, 34800 Trong, Perak
District	:	Manjung
Postcode	:	34800
State	:	Perak
GPS Coordinate	:	4.611232968, 100.7195221
LRD	:	A

End Point

Site / Boundary Name	:	Pantai Remis
Address	:	Jalan Beruas, 34800 Trong, Perak
District	:	Manjung
Postcode	:	34800
State	:	Perak
GPS Coordinate	:	4.616319927, 100.7137308
LRD	:	B

Work Summary

No	Proposed Distance and Method	Unit	Qty
1	Horizontal Directional Drilling (HDD)	m	0
2	Carriage Way Open trench (CW)	m	0
3	Grass Verge Open Trenching (GV)	m	0
4	Micro trenching (MT)	m	0
	Total		0

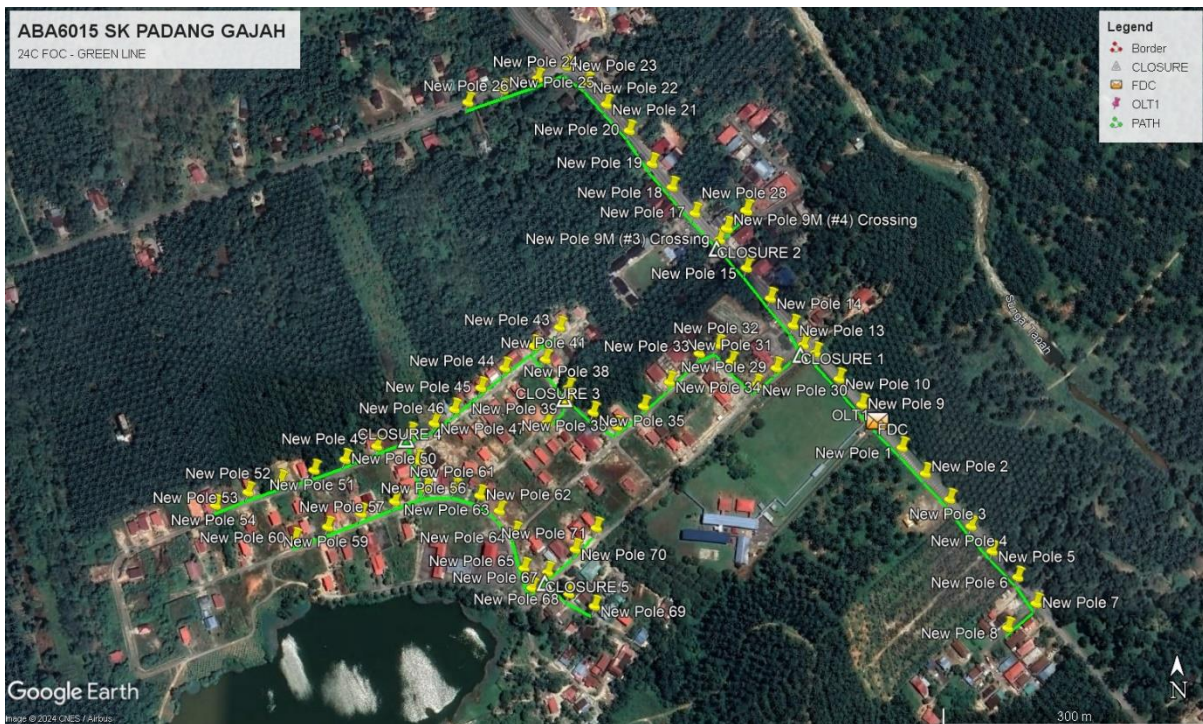
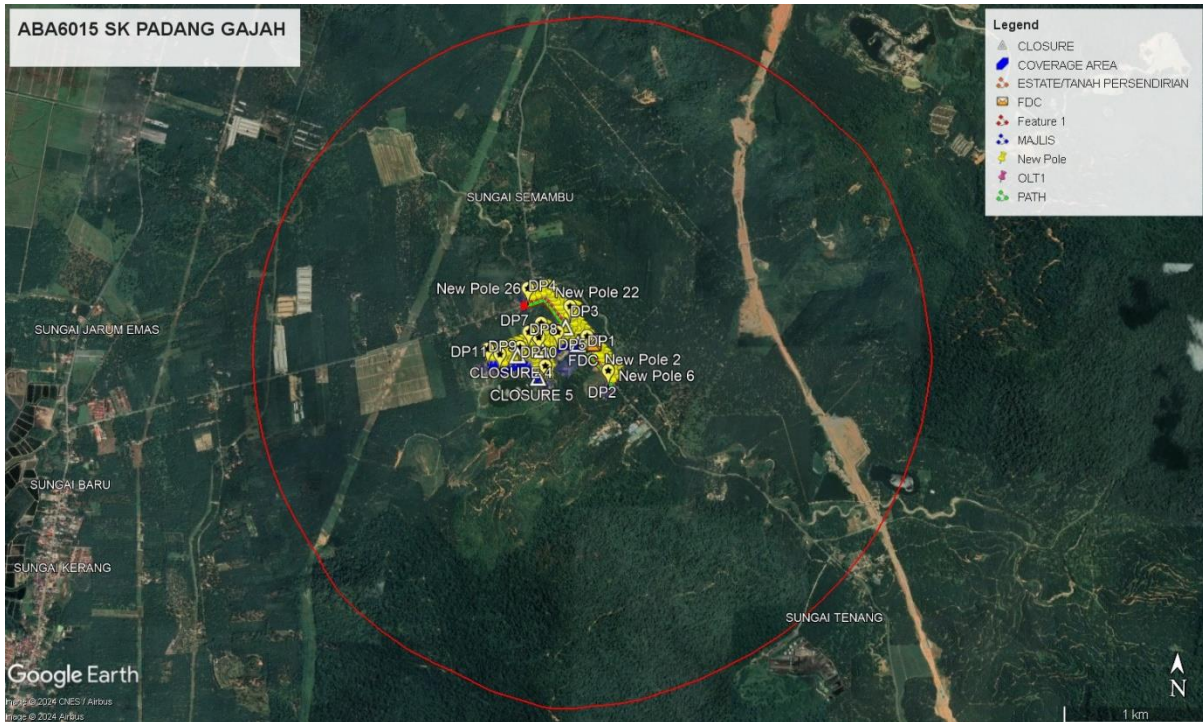
	Other Information	Unit	Qty
1	Installation of Short Span ADSS Fibre Cables	m	2,616
2	Install New Pole	ea	71
2	Install New JRC7 Manhole	ea	0
	Install GI Riser 100mm	ea	0
3	Install Fiber Distribution Point and Closure (Splicing, Termination and Testing)	ea	13: FDP 5: Closure
4	Estimated Time Required for Completion	days	30

Local Authority Summary

1. Daerah Pantai Remis

Bil	Items	Owner	Quantity	Distance
1	HDD	JKR	-	-
		Majlis	-	-
		Estate / Private Land	-	-
2	New Pole	JKR	25pcs	875m
		Majlis	46pcs	1610m
		Estate / Private Land	-	-
Total				2,485m

Site Plan – KMZ (Overview site area)



Site Plan – KMZ Routing (All Local Authority)



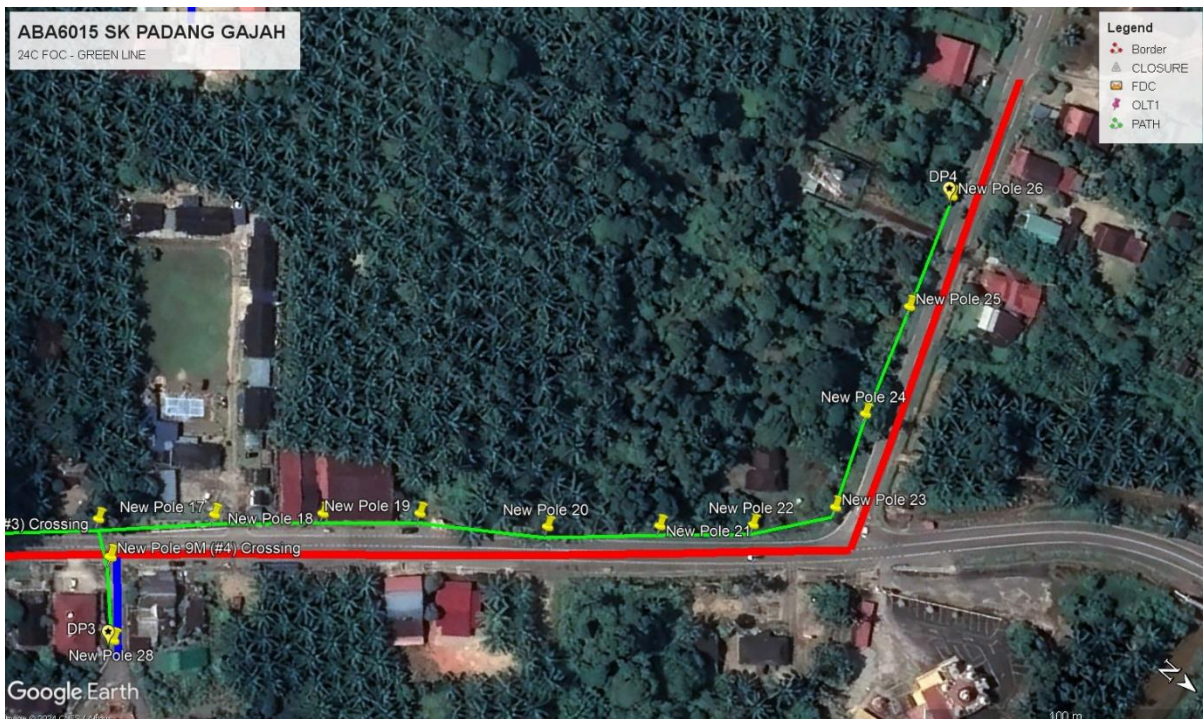
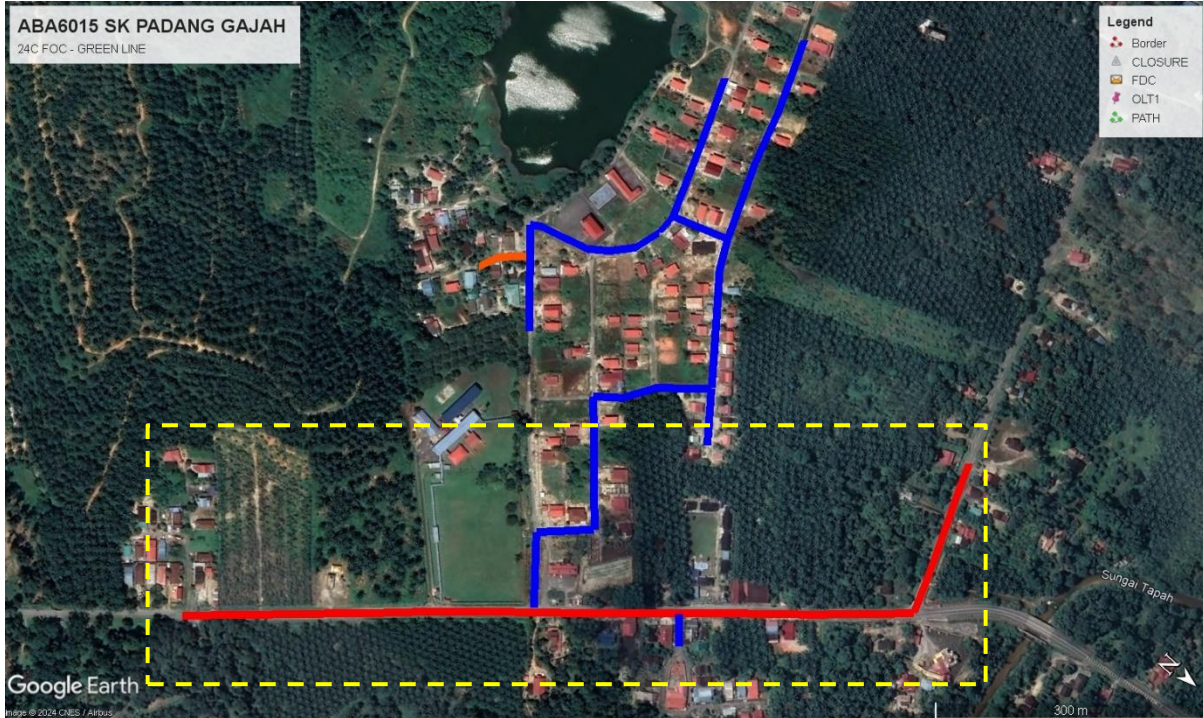
Orange – Estate/Private Land

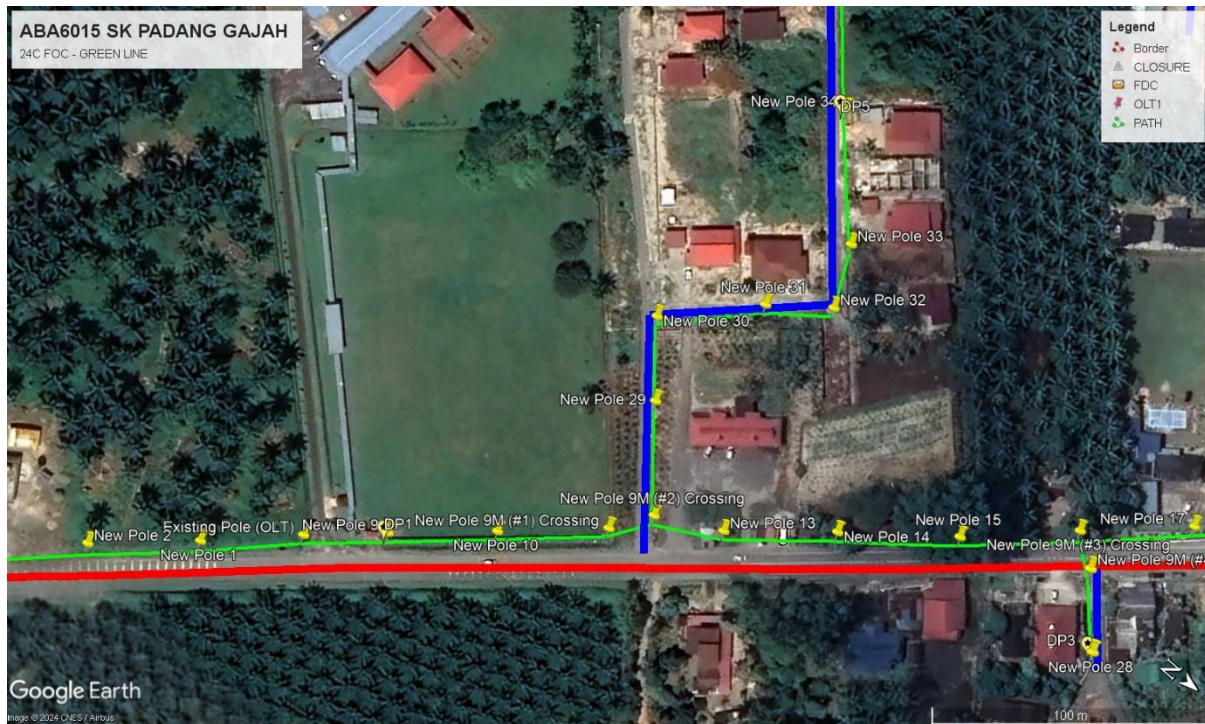
Red – JKR Daerah Manjung

Blue – Majlis Perbandaran Manjung

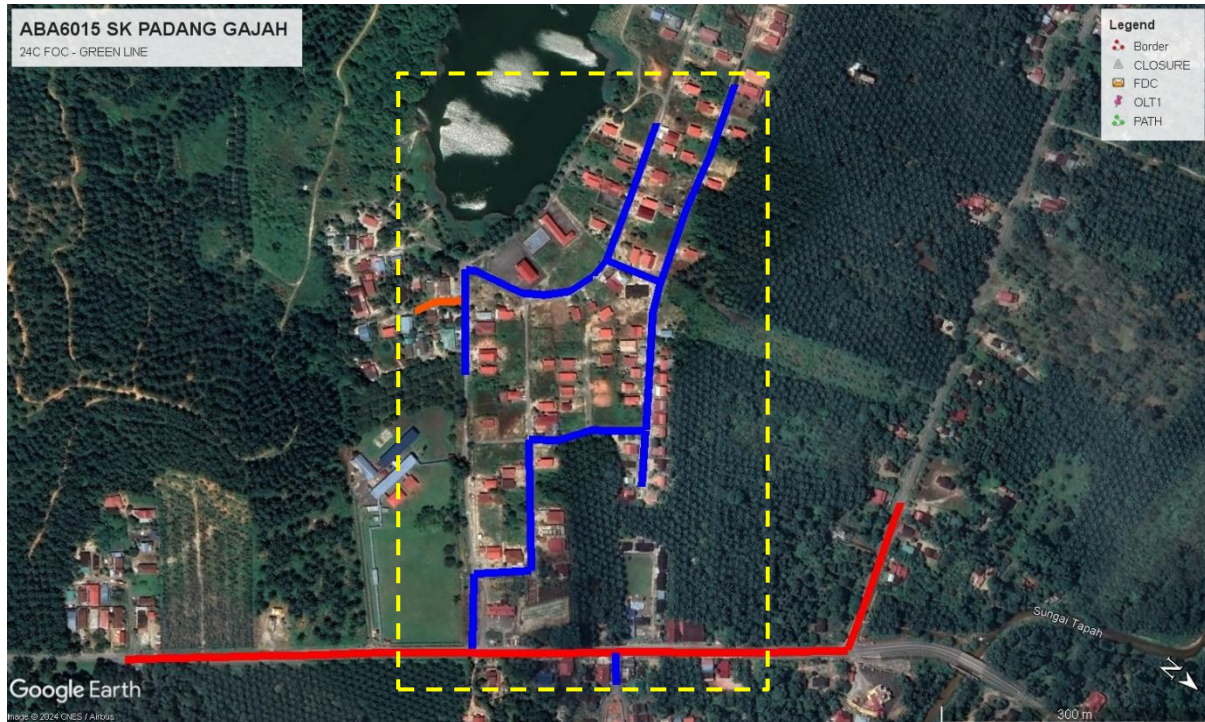
Site Plan – KMZ Routing (All site area)

Route 1



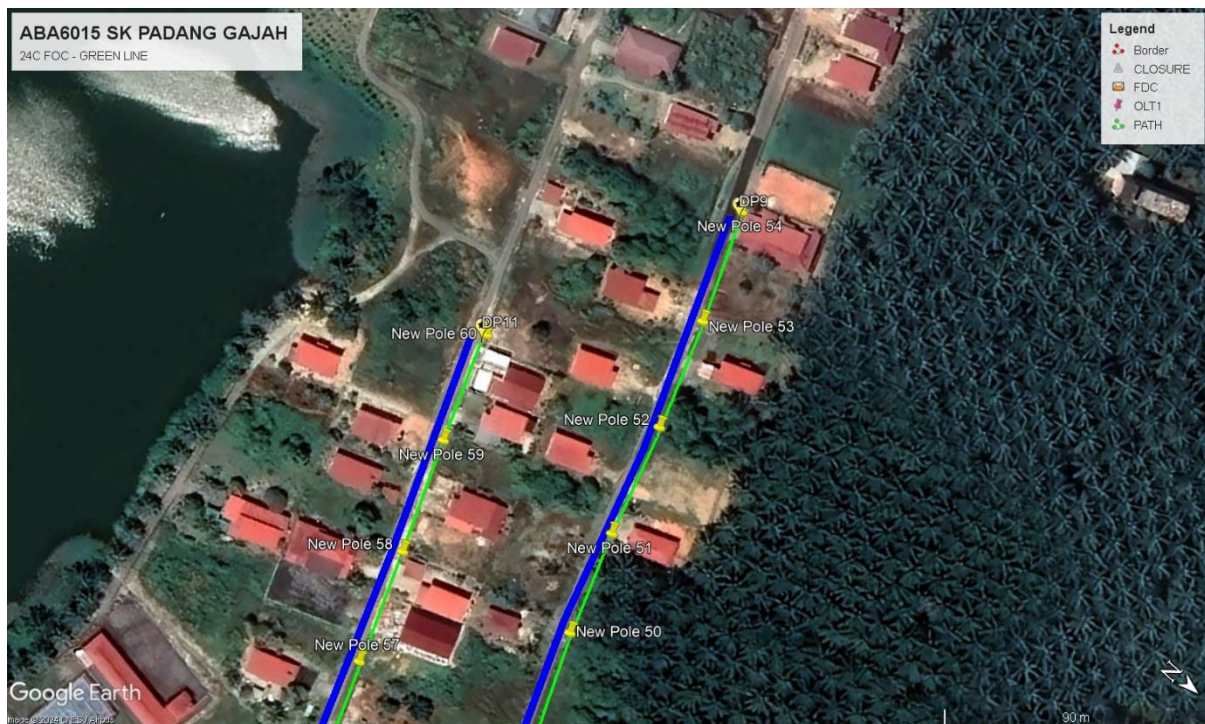
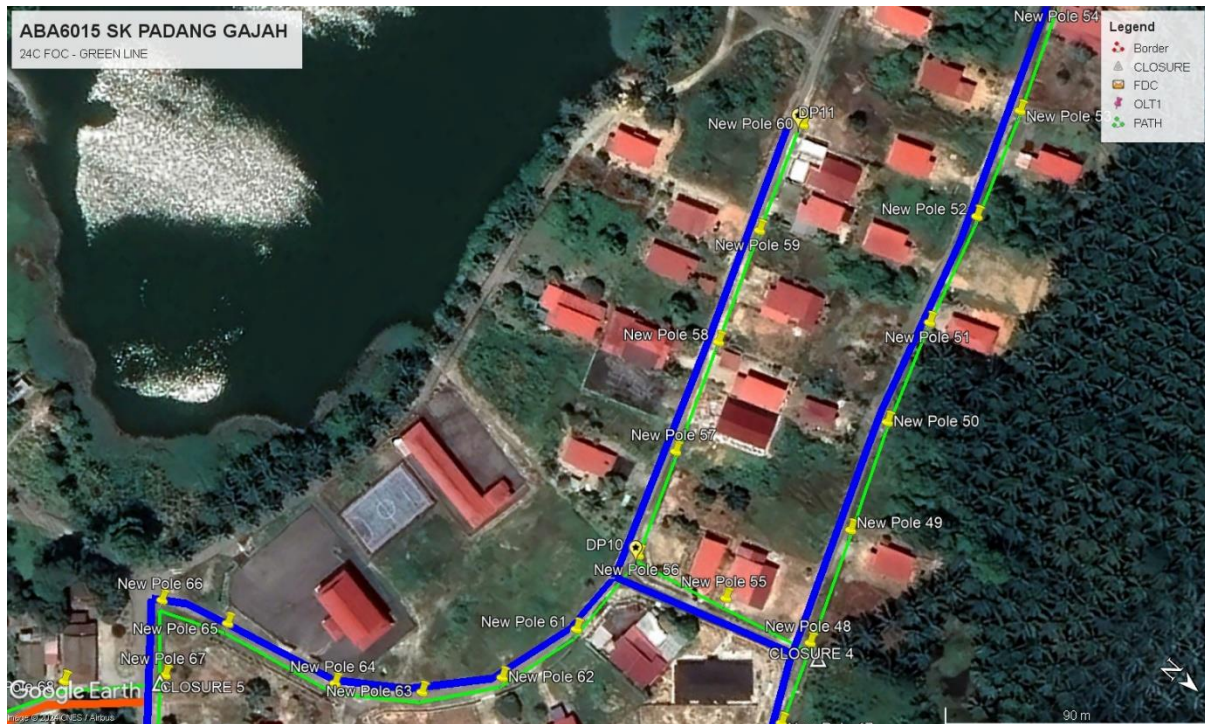


Route 2



PROJEK PENYEDIAAN DAN PENYELENGGARAAN POINT OF PRESENCE (POP) FASA 2:
HAB INFRASTRUKTUR GENTIAN OPTIK BERHAMPIRAN DENGAN SEKOLAH, KAWASAN
PERINDUSTRIAN, PREMIS KERAJAAN DAN KOMUNITI SEKITARNYA OLEH
KEMENTERIAN KOMUNIKASI MALAYSIA – PMU PRMS UNTUK ABA6015 – SEKOLAH
KEBANGSAAN PADANG GAJAH





Proposed New Pole Latitude & Longitude Table

NEW PROPOSED POLE COORDINATE					
NO.	POLE NUMBER	DISTANCE (m)	LATITUDE	LONGITUDE	Local Authority
1	Existing Pole (OLT)	10	4.613044175	100.7179414	JKR Daerah Manjung
2	T001	35	4.61280968	100.7181651	JKR Daerah Manjung
3	T002	38	4.612546877	100.7183988	JKR Daerah Manjung
4	T003	40	4.61228403	100.7186505	JKR Daerah Manjung
5	T004	38	4.612012227	100.7188661	JKR Daerah Manjung
6	T005	38	4.61175851	100.7190818	JKR Daerah Manjung
7	T006	40	4.611495641	100.7193425	JKR Daerah Manjung
8	T007	35	4.611232968	100.7195221	JKR Daerah Manjung
9	T008	40	4.610980451	100.7192421	Majlis Perbandaran Manjung
10	T009	30	4.613244708	100.7177606	JKR Daerah Manjung
11	T010	40	4.613507512	100.717527	JKR Daerah Manjung
12	New Pole 9M (#1) Crossing	40	4.613770337	100.7172843	JKR Daerah Manjung
13	New Pole 9M (#2) Crossing	20	4.613852026	100.7171583	JKR Daerah Manjung
14	T013	25	4.614051226	100.7170506	JKR Daerah Manjung
15	T014	40	4.614323072	100.716817	JKR Daerah Manjung
16	T015	45	4.61463111	100.7165744	JKR Daerah Manjung
17	New Pole 9M (#3) Crossing	45	4.614921129	100.7163048	JKR Daerah Manjung
18	T017	40	4.615193018	100.7160531	JKR Daerah Manjung
19	T018	40	4.615455822	100.7158194	JKR Daerah Manjung
20	T019	35	4.615691432	100.7156127	JKR Daerah Manjung
21	T020	45	4.616026576	100.7153792	JKR Daerah Manjung
22	T021	40	4.616298422	100.7151456	JKR Daerah Manjung
23	T022	35	4.616524968	100.7149478	JKR Daerah Manjung
24	T023	30	4.616688258	100.7147319	JKR Daerah Manjung
25	T024	35	4.616562358	100.7144433	JKR Daerah Manjung
26	T025	40	4.616445653	100.7140915	JKR Daerah Manjung
27	T026	45	4.616319927	100.7137308	JKR Daerah Manjung
28	New Pole 9M (#4) Crossing	15	4.615029466	100.7163771	JKR Daerah Manjung
29	T028	30	4.615209839	100.7165758	Majlis Perbandaran Manjung
30	T029	40	4.613617593	100.7168784	Majlis Perbandaran Manjung
31	T030	30	4.613446285	100.7166707	Majlis Perbandaran Manjung
32	T031	40	4.613682004	100.7164189	Majlis Perbandaran Manjung
33	T032	25	4.613854141	100.7162842	Majlis Perbandaran Manjung
34	T033	25	4.613764172	100.7160947	Majlis Perbandaran Manjung
35	T034	45	4.613475548	100.7157876	Majlis Perbandaran Manjung
36	T035	40	4.613232029	100.7155257	Majlis Perbandaran Manjung
37	T036	40	4.613024701	100.7152548	Majlis Perbandaran Manjung
38	T037	30	4.613169972	100.7150119	Majlis Perbandaran Manjung
39	T038	40	4.613414733	100.7147601	Majlis Perbandaran Manjung
40	T039	17	4.613261029	100.7147508	Majlis Perbandaran Manjung
41	T040	35	4.613062592	100.714543	Majlis Perbandaran Manjung

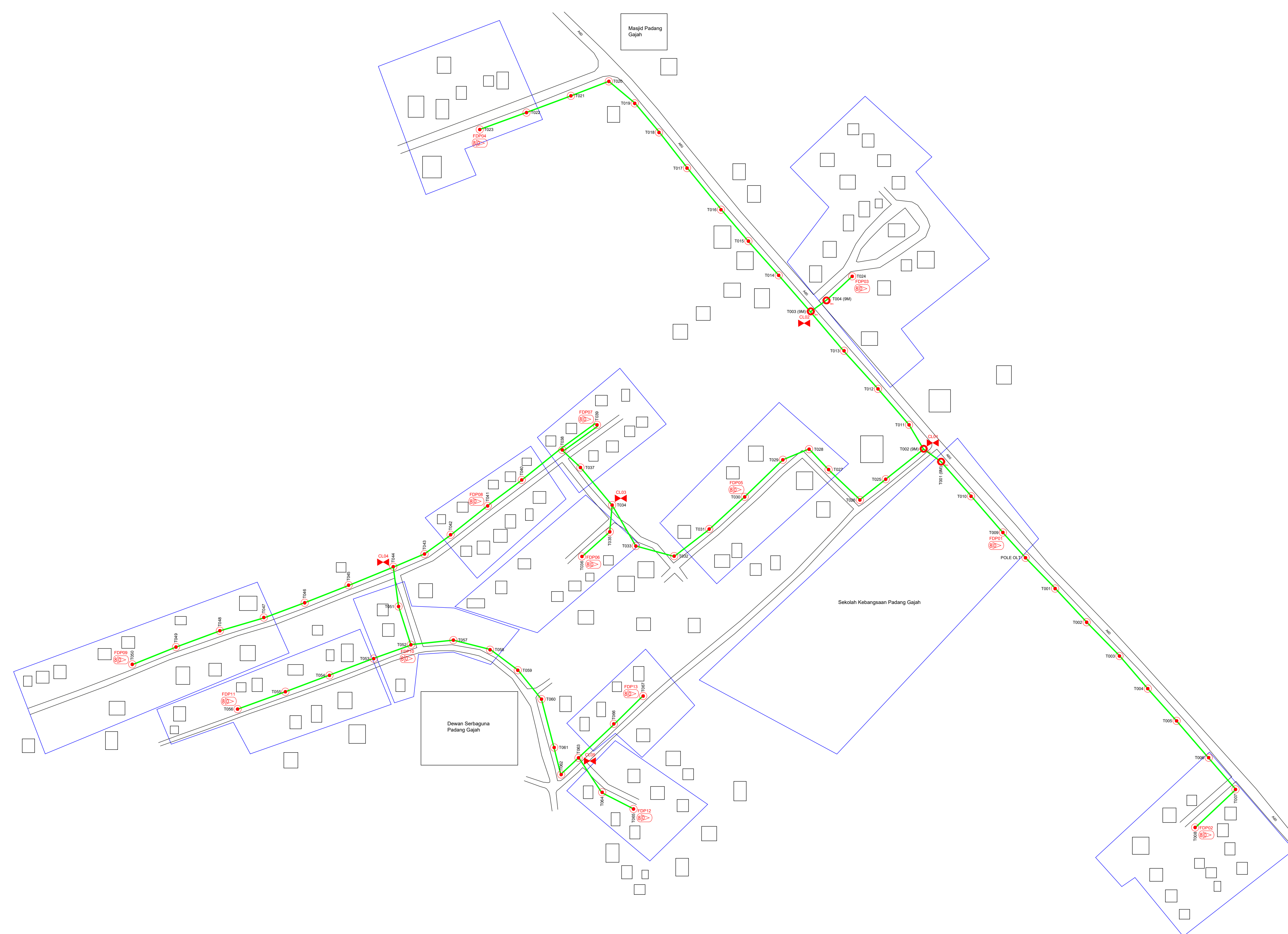
42	T041	45	4.613704664	100.7145265	Majlis Perbandaran Manjung
43	T042	20	4.613840586	100.7144097	Majlis Perbandaran Manjung
44	T043	40	4.614029851	100.7146715	Majlis Perbandaran Manjung
45	T044	40	4.613615238	100.7141118	Majlis Perbandaran Manjung
46	T045	35	4.613416888	100.713868	Majlis Perbandaran Manjung
47	T046	40	4.613200517	100.7135971	Majlis Perbandaran Manjung
48	T047	30	4.613056335	100.7133895	Majlis Perbandaran Manjung
49	T048	30	4.612957453	100.7131459	Majlis Perbandaran Manjung
50	T049	40	4.61282264	100.7128032	Majlis Perbandaran Manjung
51	T050	40	4.612687783	100.7124784	Majlis Perbandaran Manjung
52	T051	40	4.612580031	100.7121627	Majlis Perbandaran Manjung
53	T052	40	4.612472345	100.71182	Majlis Perbandaran Manjung
54	T053	40	4.612355595	100.7114863	Majlis Perbandaran Manjung
55	T054	45	4.612220759	100.7111526	Majlis Perbandaran Manjung
56	T055	30	4.612676957	100.7132174	Majlis Perbandaran Manjung
57	T056	35	4.612387396	100.7132978	Majlis Perbandaran Manjung
58	T057	37	4.61226156	100.7129821	Majlis Perbandaran Manjung
59	T058	40	4.612135789	100.7126393	Majlis Perbandaran Manjung
60	T059	40	4.612000975	100.7122965	Majlis Perbandaran Manjung
61	T060	45	4.611884225	100.7119628	Majlis Perbandaran Manjung
62	T061	35	4.612395721	100.7135952	Majlis Perbandaran Manjung
63	T062	30	4.612322749	100.7138563	Majlis Perbandaran Manjung
64	T063	28	4.612168545	100.7140542	Majlis Perbandaran Manjung
65	T064	30	4.61195113	100.7142159	Majlis Perbandaran Manjung
66	T065	45	4.611580163	100.7143051	Majlis Perbandaran Manjung
67	T066	25	4.611381029	100.7143858	Majlis Perbandaran Manjung
68	T067	25	4.611543405	100.7145484	Majlis Perbandaran Manjung
69	T068	35	4.611325859	100.7147641	Majlis Perbandaran Manjung
70	T069	35	4.611198631	100.7150252	Majlis Perbandaran Manjung
71	T070	40	4.611777839	100.7148283	Majlis Perbandaran Manjung
72	T071	35	4.61199434	100.7150451	Majlis Perbandaran Manjung

Site Photos – Proposed New Pole



3rd Parties Dependencies

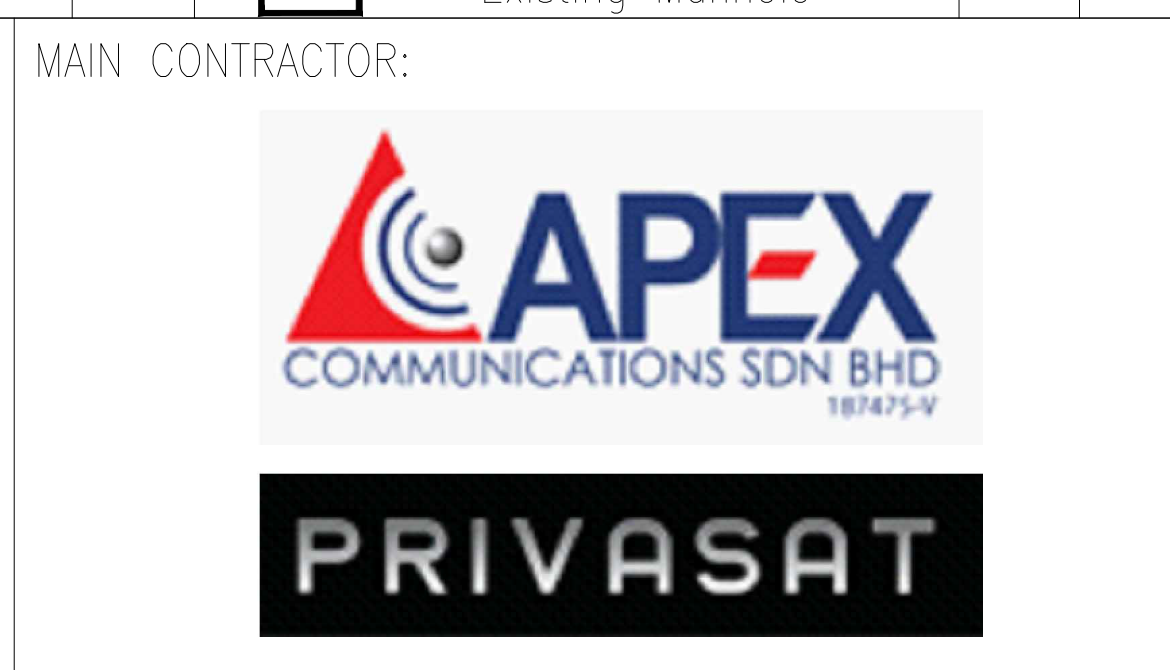
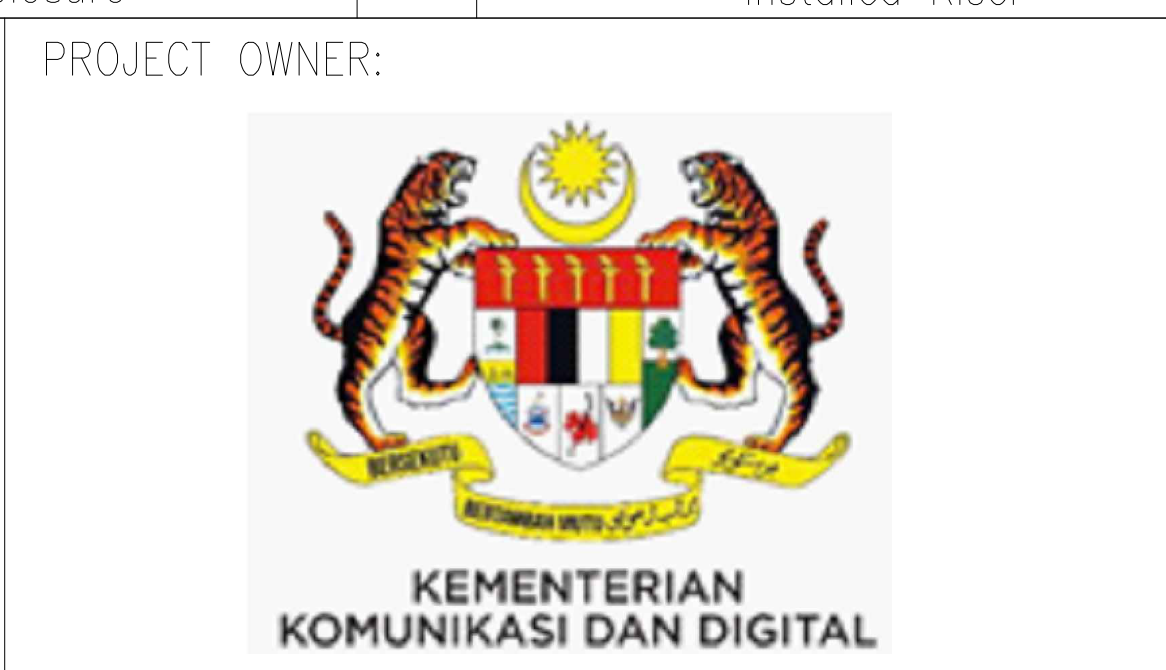
No.	Local Council / Authority	Remark
1	Majlis Perbandaran Manjung	1,686 meters
2	JKR Daerah Manjung	930 meters



ACTUAL HOMEPASS : 104

12C FOC		Installed 1:4 / 1:8 / 1:32 splitter	○	Installed Pole (9m)	4	s	Suspension	48	JB30	New Manhole (PIT)	Micro-Trenching (Meter)	MH1	MH NO.
24C FOC	2616m	Installed Patch Cord	⦿	Installed Pole (7.5M)	67	T	Tension	106	C7	New Manhole(JRC7)	Temporary Infra (Meter)	TKS-1	Existing TNB Pole NO.
48C FOC		FDC	⊠	Installed Pole (6.7M)		⊗	Pole Ring	13		FDP Boundary	Loop / Coil (Meter)	P001	New Pole NO.
96C FOC		Closure	⊠	Existing TNB Pole	5	8D->	FDP with (1:8) splitter	13		HDD (Meter)	#	CL01	Closure NO.
144C FOC		Existing Closure	⊠	Installed Riser		□	Existing Manhole			Open Cut (Meter)	C01	DP1	FDP NO.

KEY PLAN:

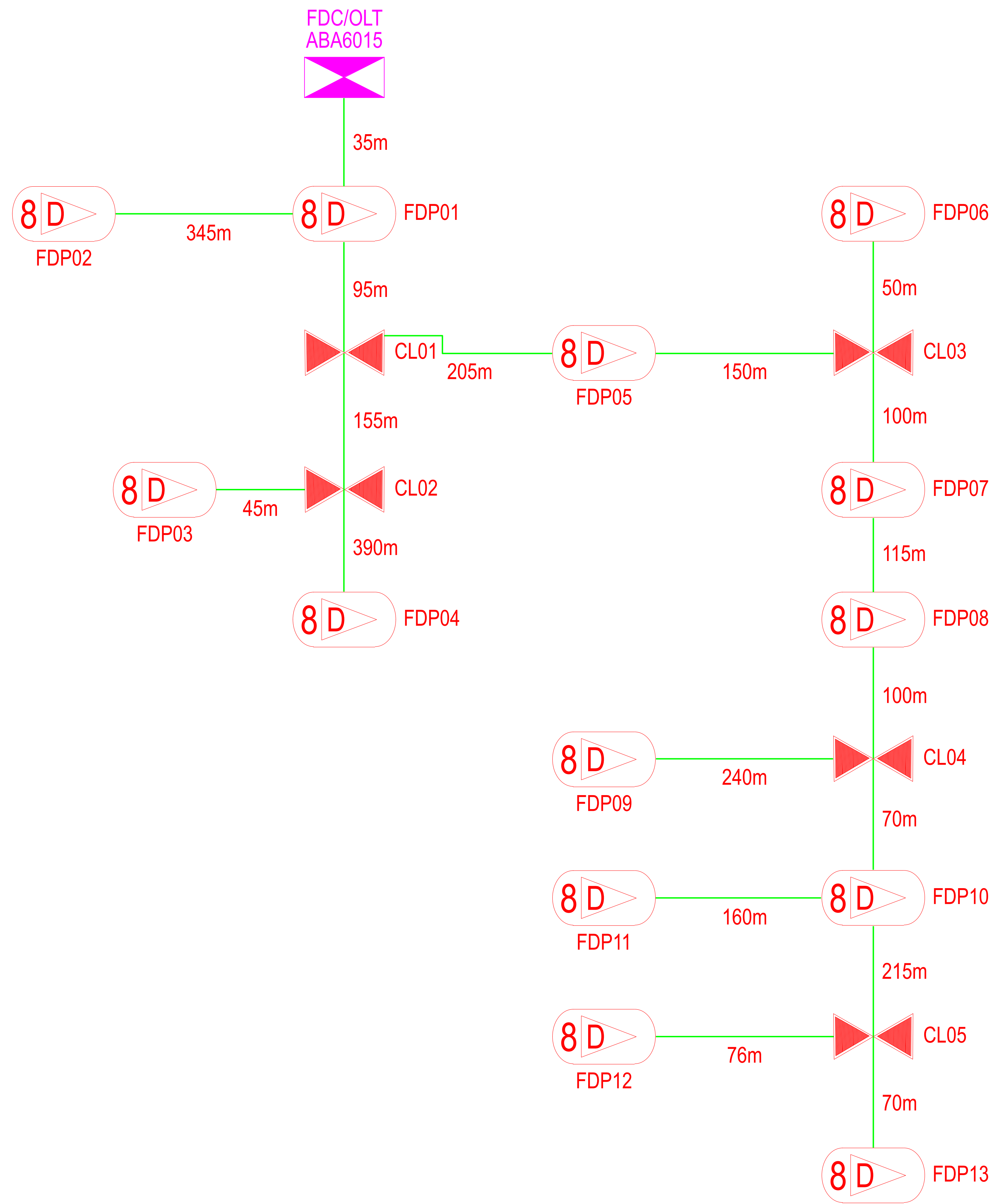


PROJECT TITLE:
**D-SIDE ABA6015
 SEKOLAH KEBANGSAAN
 PADANG GAJAH**

DRAWING TITLE:
 CONSTRUCTION DRAWING
 ABA6015
 SEKOLAH KEBANGSAAN PADANG GAJAH

PROJECT PHASE:
 POP 2

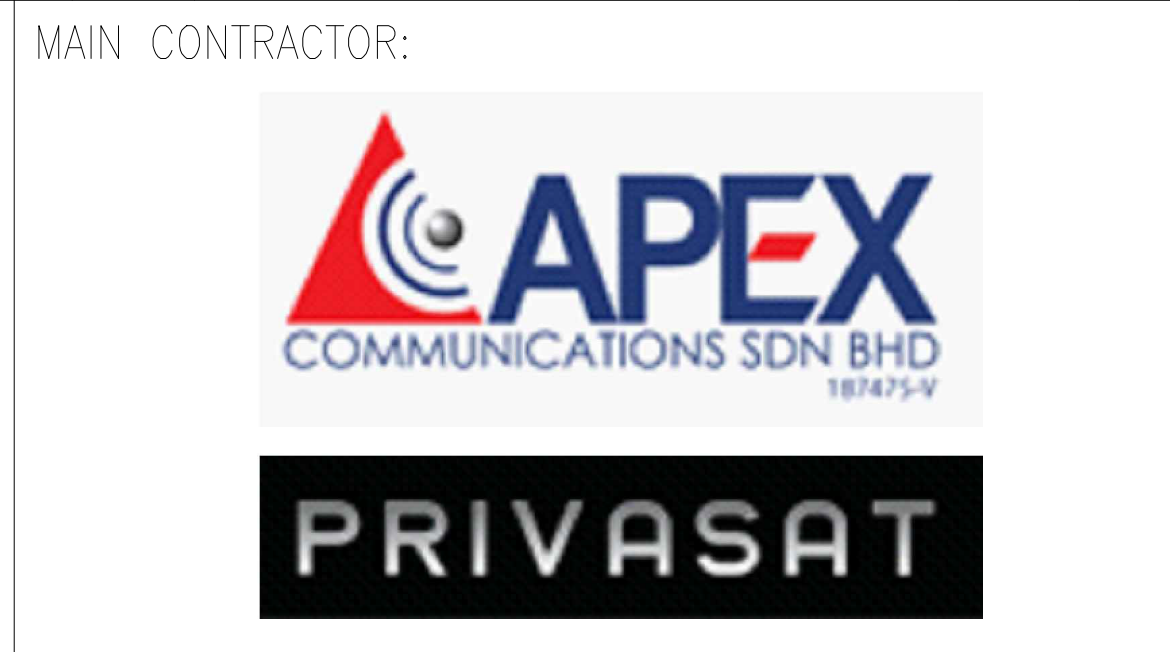
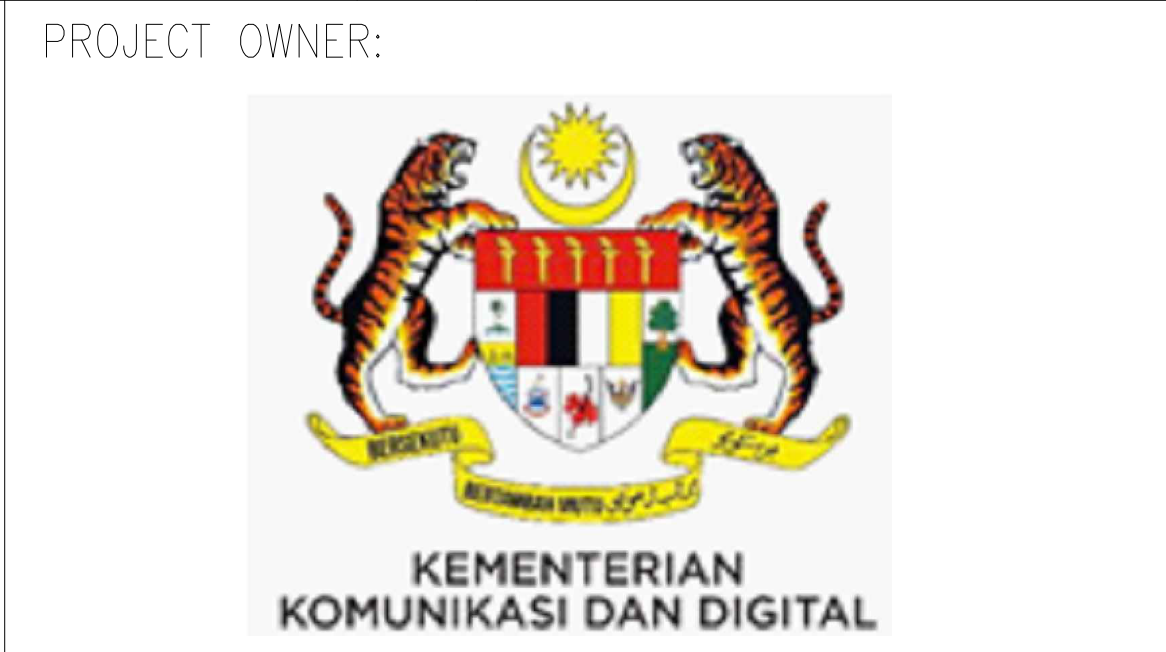
Design By : ABDUL HANIF	Date : 01/08/2024
Drawn By : ABDUL HANIF	Scale : NOT TO SCALE
Checked By : MUHAMMAD JAZLI	Job Number : 1
DRAWING NUMBER : ABA6015-CD-01	Sheet : 1/1
THIS PRINT AND ITS COPYRIGHT ARE THE PROPERTY OF ALLO TECHNOLOGY SDN BHD	
Size : A1	



ACTUAL HOMEPASS : 104

12C FOC		Installed 1:4 / 1:8 / 1:32 splitter		Installed Pole (9m)	4		Suspension	48		New Manhole (PIT)		Micro-Trenching (Meter)		MH NO.
24C FOC	2616m	Installed Patch Cord		Installed Pole (7.5M)	67		Tension	106		New Manhole(JRC7)		Temporary Infra (Meter)		Existing TNB Pole NO.
48C FOC		FDC		Installed Pole (6.7M)			Pole Ring	13		FDP Boundary		Loop / Coil (Meter)		New Pole NO.
96C FOC		Closure		Existing TNB Pole	5		FDP with (1:8) splitter	13		HDD (Meter)		Active Outdoor Cabinet		Closure NO.
144C FOC		Existing Closure		Installed Riser			Existing Manhole			Open Cut (Meter)		FDC NO.		FDP NO.

KEY PLAN:



PROJECT TITLE:
**D-SIDE ABA6015
 SEKOLAH KEBANGSAAN
 PADANG GAJAH**

DRAWING TITLE:
 CONSTRUCTION DRAWING
 ABA6015
 SEKOLAH KEBANGSAAN PADANG GAJAH

PROJECT PHASE:
 POP 2

Design By : ABDUL HANIF	Date : 01/08/2024
Drawn By : ABDUL HANIF	Scale : NOT TO SCALE
Checked By : MUHAMMAD JAZLI	Job Number : 1
DRAWING NUMBER : ABA6015-CD-01	Sheet : 1/1
THIS PRINT AND ITS COPYRIGHT ARE THE PROPERTY OF ALLO TECHNOLOGY SDN BHD	
Size : A1	