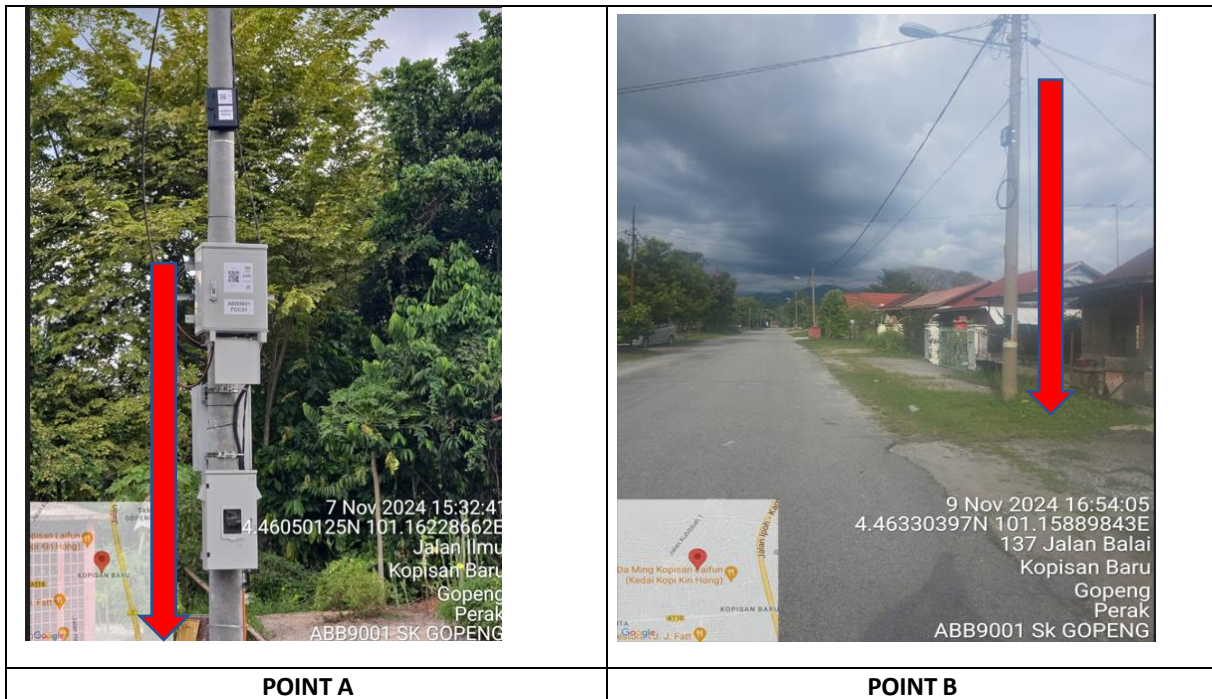


TECHNICAL PROPOSAL

POP2 ABB 9001 SEKOLAH KEBANGSAAN GOPENG (D-SIDE)

Company Name :	WCWL Communication Sdn Bhd
Company Address :	No 127 Jalan PUJ 3/3, Taman Puncak Jalil, Bandar Putra Permai 43300 Selangor
Prepared By :	Ramdan
Date :	13 Nov 2024



Starting Point

Site / Boundary Name	: SEKOLAH KEBANGSAAN GOPENG
Address	: Jln Ilmu, Kopisan Baru, Kampar
District	: Kampar
Postcode	: 31600
State	: Perak
GPS Coordinate	: 4.460501, 101.162287
LRD	: A

End Point

Site / Boundary Name	: SEKOLAH KEBANGSAAN GOPENG
Address	: Di hadapan rumah No 12, Jln Bunga Tanjung, Kopisan Baru
District	: Gopeng, Kampar
Postcode	: 31600
State	: Perak
GPS Coordinate	: 4.463304, 101.158898
LRD	: B

Work Summary

No	Proposed Distance and Method	Unit	Qty
1	Horizontal Directional Drilling (HDD)	m	0
2	Carriage Way Open trench (CW)	m	0
3	Grass Verge Open Trenching (GV)	m	0
4	Micro trenching (MT)	m	0
	Total		0

	Other Information	Unit	Qty
1	Proposed Manhole	EA	0
2	Proposed Pole	EA	64
3	Joint Closure	EA	5
4	Estimated time required for completion	days	60

Local Authority Summary

1. Daerah Kampar

Bil	Items	Owner	Quantity	Distance
1	HDD	JKR	-	-
		Majlis	-	-
		Estate / Private Land	-	-
2	New Pole	JKR	-	-
		Majlis	64	4000m
		Estate / Private Land	-	-
3	Existing TNB Pole	JKR	-	-
		Majlis	-	-
		Estate / Private Land	-	-
Total				4000m

Site Plan – KMZ (Overview site area)

Proposed Cable and New Pole



Site Plan – KMZ Routing (All Local Authority)





PROJEK PENYEDIAAN DAN PENYELENGGARAAN POINT OF PRESENCE (POP)
FASA 2 : HAB INFRASTRUKTUR GENTIAN OPTIK BERHAMPIRAN DENGAN
SEKOLAH, KAWASAN PERINDUSTRIAN, PREMIS KERAJAAN DAN KOMUNITI
SEKITARNYA OLEH KEMENTERIAN KOMUNIKASI MALAYSIA – ZON UTARA
(KKMM.400-11/17/132(1))



Route Blue Colour - Majlis Daerah Kampar

Prop New Pole Lat & Long Table

PROPOSED POLE COORDINATE		
POLE NUMBER	LATITUDE	LONGITUDE
T 001	4.460526086	101.162227978
T 002	4.460900495	101.162176509
T 003	4.461204845	101.162129512
T 004	4.461506150	101.162056056
T 005	4.461903818	101.161994423
T 006	4.462293258	101.161946885
T 007	4.462382903	101.162194005
T 008	4.462458692	101.162441408
T 009	4.462534769	101.162805185
T 010	4.462614196	101.163157440
T 011	4.462932298	101.163137314
T 012	4.463260727	101.163099293
T 013	4.463581813	101.163048409
T 014	4.463898891	101.162992814
T 015	4.464129038	101.162950111
T 016	4.462793680	101.162385000
T 017	4.463131006	101.162319893
T 018	4.463084068	101.162031322
T 019	4.463021985	101.161739206
T 020	4.462977582	101.161453646
T 021	4.462918796	101.161122079
T 022	4.463452648	101.162270181
T 023	4.463742503	101.162213795
T 024	4.463707596	101.161918452
T 025	4.463666984	101.161586582
T 026	4.463875849	101.161539458
T 027	4.464280566	101.161477130
T 028	4.464242301	101.161111695
T 029	4.464029582	101.162168041
T 030	4.464352711	101.162119653
T 031	4.464619917	101.162057626
T 032	4.464792645	101.161868770
T 033	4.464877524	101.161511923
T 034	4.464957332	101.161244303
T 035	4.465024211	101.160983433
T 036	4.465125264	101.160643267
T 037	4.464995628	101.160518874
T 038	4.464825288	101.160373176
T 039	4.464608859	101.160193024
T 040	4.464366313	101.160002661
T 041	4.464221529	101.159836017
T 042	4.464091266	101.159662137
T 043	4.463883093	101.159460329
T 044	4.465434335	101.160843367
T 045	4.465685924	101.161020293
T 046	4.465609436	101.161278526
T 047	4.465522051	101.161566187

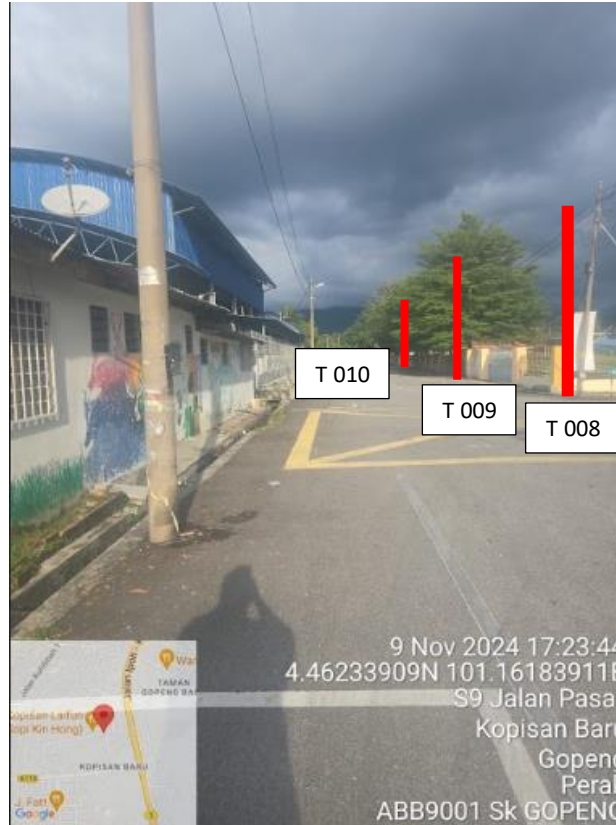
PROPOSED POLE COORDINATE		
POLE NUMBER	LATITUDE	LONGITUDE
T 048	4.465949316	101.161185712
T 049	4.466168491	101.161321134
T 050	4.466228967	101.161449768
T 051	4.466169934	101.161640216
T 052	4.466104722	101.161887033
T 053	4.466025095	101.162198645
T 054	4.466203282	101.162282680
T 055	4.466397412	101.162382815
T 056	4.466652872	101.162496717
T 057	4.466871919	101.162577508
T 058	4.467088504	101.162665399
T 059	4.467264387	101.162731930
T 060	4.467338353	101.162439275
T 061	4.467479737	101.162789208
T 062	4.467680483	101.162838095
T 063	4.467851159	101.162866545
T 064	4.467940933	101.162664133

Overall Manhole & Pole (Propose New & Existing)

No.	Pole & Manhole ID	Distance	Latitude	Longitude	Local Authority
1	T 001	0	4.460526086	101.162227978	Majlis Daerah Kampar
2	T 002	38	4.460900495	101.162176509	Majlis Daerah Kampar
3	T 003	40	4.461204845	101.162129512	Majlis Daerah Kampar
4	T 004	39	4.461506150	101.162056056	Majlis Daerah Kampar
5	T 005	42	4.461903818	101.161994423	Majlis Daerah Kampar
6	T 006	45	4.462293258	101.161946885	Majlis Daerah Kampar
7	T 007	35	4.462382903	101.162194005	Majlis Daerah Kampar
8	T 008	38	4.462458692	101.162441408	Majlis Daerah Kampar
9	T 009	39	4.462534769	101.162805185	Majlis Daerah Kampar
10	T 010	30	4.462614196	101.163157440	Majlis Daerah Kampar
11	T 011	35	4.462932298	101.163137314	Majlis Daerah Kampar
12	T 012	30	4.463260727	101.163099293	Majlis Daerah Kampar
13	T 013	35	4.463581813	101.163048409	Majlis Daerah Kampar
14	T 014	40	4.463898891	101.162992814	Majlis Daerah Kampar
15	T 015	30	4.464129038	101.162950111	Majlis Daerah Kampar
16	T 016	30	4.462793680	101.162385000	Majlis Daerah Kampar
17	T 017	40	4.463131006	101.162319893	Majlis Daerah Kampar
18	T 018	35	4.463084068	101.162031322	Majlis Daerah Kampar
19	T 019	35	4.463021985	101.161739206	Majlis Daerah Kampar
20	T 020	38	4.462977582	101.161453646	Majlis Daerah Kampar
21	T 021	30	4.462918796	101.161122079	Majlis Daerah Kampar
22	T 022	25	4.463452648	101.162270181	Majlis Daerah Kampar
23	T 023	30	4.463742503	101.162213795	Majlis Daerah Kampar
24	T 024	33	4.463707596	101.161918452	Majlis Daerah Kampar
25	T 025	38	4.463666984	101.161586582	Majlis Daerah Kampar
26	T 026	33	4.463875849	101.161539458	Majlis Daerah Kampar
27	T 027	25	4.464280566	101.161477130	Majlis Daerah Kampar
28	T 028	28	4.464242301	101.161111695	Majlis Daerah Kampar
29	T 029	30	4.464029582	101.162168041	Majlis Daerah Kampar
30	T 030	30	4.464352711	101.162119653	Majlis Daerah Kampar
31	T 031	28	4.464619917	101.162057626	Majlis Daerah Kampar
32	T 032	37	4.464792645	101.161868770	Majlis Daerah Kampar
33	T 033	25	4.464877524	101.161511923	Majlis Daerah Kampar
34	T 034	30	4.464957332	101.161244303	Majlis Daerah Kampar
35	T 035	35	4.465024211	101.160983433	Majlis Daerah Kampar
36	T 036	35	4.465125264	101.160643267	Majlis Daerah Kampar
37	T 037	33	4.464995628	101.160518874	Majlis Daerah Kampar
38	T 038	32	4.464825288	101.160373176	Majlis Daerah Kampar
39	T 039	40	4.464608859	101.160193024	Majlis Daerah Kampar
40	T 040	33	4.464366313	101.160002661	Majlis Daerah Kampar
41	T 041	26	4.464221529	101.159836017	Majlis Daerah Kampar
42	T 042	32	4.464091266	101.159662137	Majlis Daerah Kampar
43	T 043	30	4.463883093	101.159460329	Majlis Daerah Kampar
44	T 044	28	4.465434335	101.160843367	Majlis Daerah Kampar
45	T 045	38	4.465685924	101.161020293	Majlis Daerah Kampar
46	T 046	33	4.465609436	101.161278526	Majlis Daerah Kampar
47	T 047	30	4.465522051	101.161566187	Majlis Daerah Kampar
48	T 048	27	4.465949316	101.161185712	Majlis Daerah Kampar

No.	Pole & Manhole ID	Distance	Latitude	Longitude	Local Authority
49	T 049	35	4.466168491	101.161321134	Majlis Daerah Kampar
50	T 050	30	4.466228967	101.161449768	Majlis Daerah Kampar
51	T 051	41	4.466169934	101.161640216	Majlis Daerah Kampar
52	T 052	38	4.466104722	101.161887033	Majlis Daerah Kampar
53	T 053	27	4.466025095	101.162198645	Majlis Daerah Kampar
54	T 054	30	4.466203282	101.162282680	Majlis Daerah Kampar
55	T 055	35	4.466397412	101.162382815	Majlis Daerah Kampar
56	T 056	34	4.466652872	101.162496717	Majlis Daerah Kampar
57	T 057	28	4.466871919	101.162577508	Majlis Daerah Kampar
58	T 058	27	4.467088504	101.162665399	Majlis Daerah Kampar
59	T 059	30	4.467264387	101.162731930	Majlis Daerah Kampar
60	T 060	45	4.467338353	101.162439275	Majlis Daerah Kampar
61	T 061	30	4.467479737	101.162789208	Majlis Daerah Kampar
62	T 062	35	4.467680483	101.162838095	Majlis Daerah Kampar
63	T 063	28	4.467851159	101.162866545	Majlis Daerah Kampar
64	T 064	33	4.467940933	101.162664133	Majlis Daerah Kampar

Site Photos – Proposed Pole 7.5m



Site Photos – Proposed Pole 7.5m





	12C FOC		Installed 1:4 / 1:8 / 1:32 splitter		Installed Pole (9m)		Suspension		New Manhole (PIT)		Micro-Trenching (Meter)		MH NO.
	24C FOC		Installed Patch Cord		Installed Pole (7.5M)		Tension		New Manhole(JRCT)		Temporary Infra (Meter)		Existing TNB Pole NO.
	48C FOC		FDC		Installed Pole (6.7M)		Pole Ring		FDP Boundary		Loop / Coil (Meter)		New Pole NO.
	96C FOC		Closure		Existing TNB Pole		FDP with (1:8) splitter		HDD (Meter)		Active Outdoor Cabinet		Closure NO.
	144C FOC		Existing Closure		Installed Riser		Existing Manhole		Open Cut (Meter)		FDC NO.		FDP NO.

ACTUAL HOMEPASS :



PROJECT OWNER:
APEX
 COMMUNICATIONS SDN BHD
 12th Floor, Menara Hap Seng, 50250
 Jalan P. Ramlee, Kuala Lumpur, MALAYSIA
 Phone: +603 - 2148 8810
 Fax: +603 - 2142 6003 / 2148 0966
 Email: corporate@apex.com.my

MAIN CONTRACTOR:
WCWL
 COMMUNICATIONS SDN BHD
 127, Jalan PUJ 3/3, Taman Puncak Jalil
 Bandar Putra Permai,
 43300 Seri Kembangan, Selangor
 Phone: +603 5888 5983
 Email: info@wcwlcommunications.com.my

SUB-CONTRACTOR:

PROJECT TITLE:
 CONTRACTOR FOR SURVEY, TECHNICAL PROPOSAL AND
 WAYLEAVE & PERMIT APPROVAL - POP 2 PROJECT

DRAWING TITLE:
 AS-BUILD SITE PLAN DRAWING
 ABB 9001
 DRAWING SEKOLAH KEBANGSAAN
 GOPENG

PROJECT PHASE:
 POP 2

Design By : (Contractor)	Date : 14-11-2024
Drawn By : (Contractor)	Scale :
Checked By :	Job Number :
DRAWING NUMBER : ABB 9001	Sheet : 1 / 1
THIS PRINT AND ITS COPYRIGHT ARE THE PROPERTY OF	
Size : A3	