

# GAMBAR LOKASI PEMASANGAN

PEBANGUNAN LADANG SOLAR 30MW YANG MENGANDUNGI SSU, COMPACT SUB DAN PONDOK PENGAWAL, DI ATAS LOT 33023 (PN 423563), SELUAS 106.18 EKAR (42.97 Ha.), MUKIM BIDOR, DAERAH BATANG PADANG, PERAK DARUL RIDZUAN UNTUK TETUAN GADING HBA SDN. BHD.

Peta Penandaan Lokasi



## PETUNJUK

CADANGAN LALUAN KABEL SECARA  
*OVERHEAD* SEPANJANG 225 METER

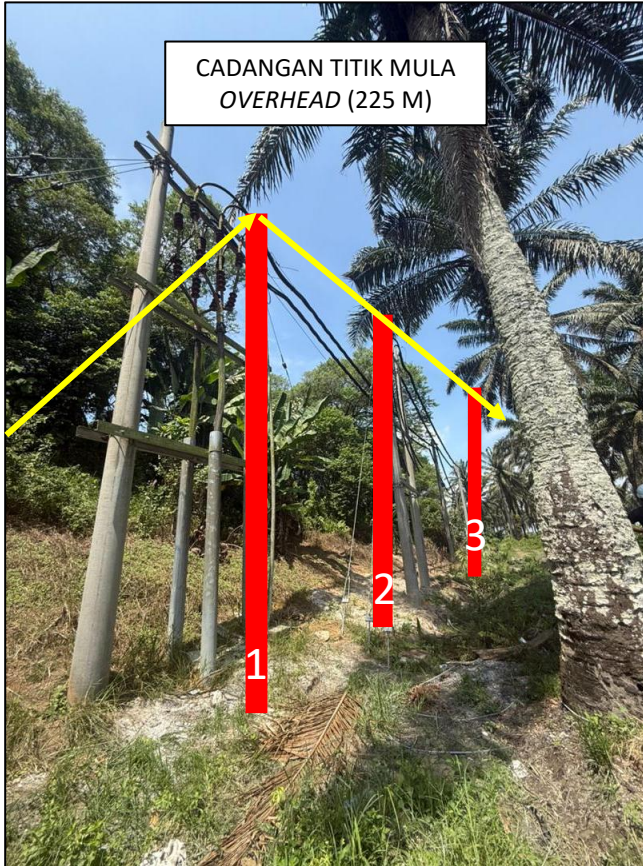


CADANGAN LALUAN KABEL SECARA  
*OPEN CUT* SEPANJANG 160 METER

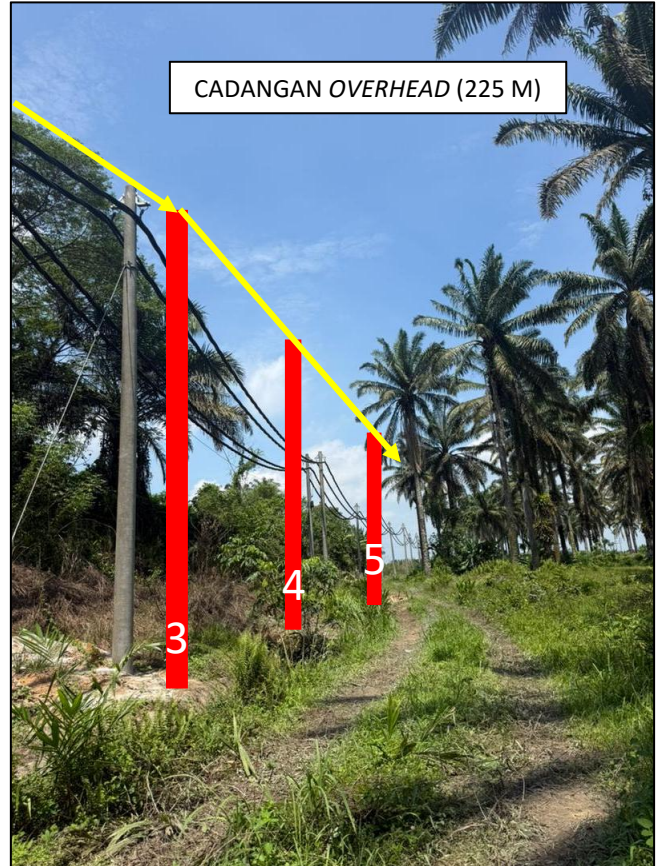


CADANGAN LALUAN KABEL SECARA  
*HDD* SEPANJANG 30 METER





GAMBAR 1 : KAWASAN KERJA MELIBATKAN OVERHEAD



GAMBAR 2 : KAWASAN KERJA MELIBATKAN OVERHEAD

KOORDINAT

Tiang 1 : 4.0740607, 101.2743533

Tiang 2 : 4.0738996, 101.2741405

Tiang 3 : 4.0737214, 101.2739357

Tiang 4 : 4.0737214, 101.2739357

Tiang 5 : 4.0735447, 101.2737259

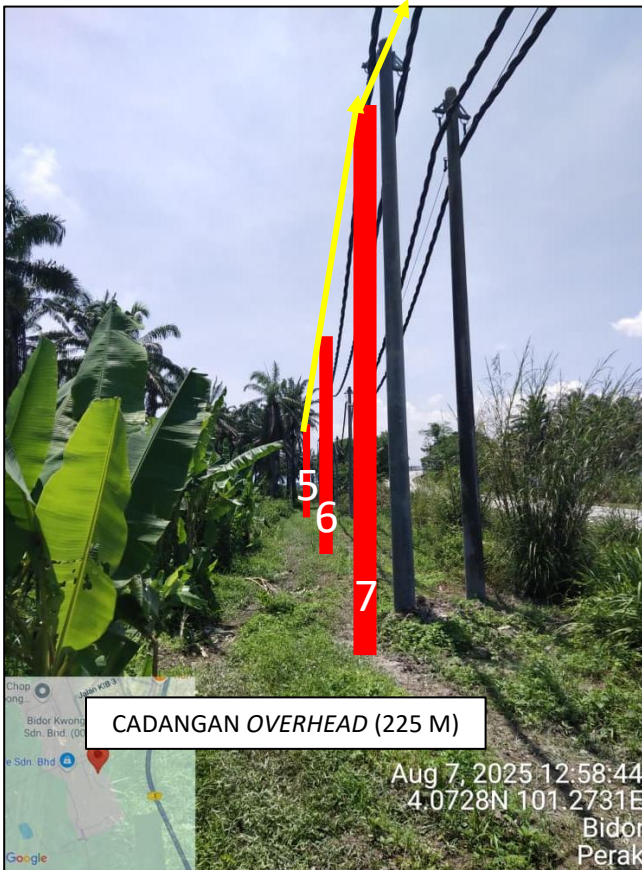
PETUNJUK

MENANAM TIANG

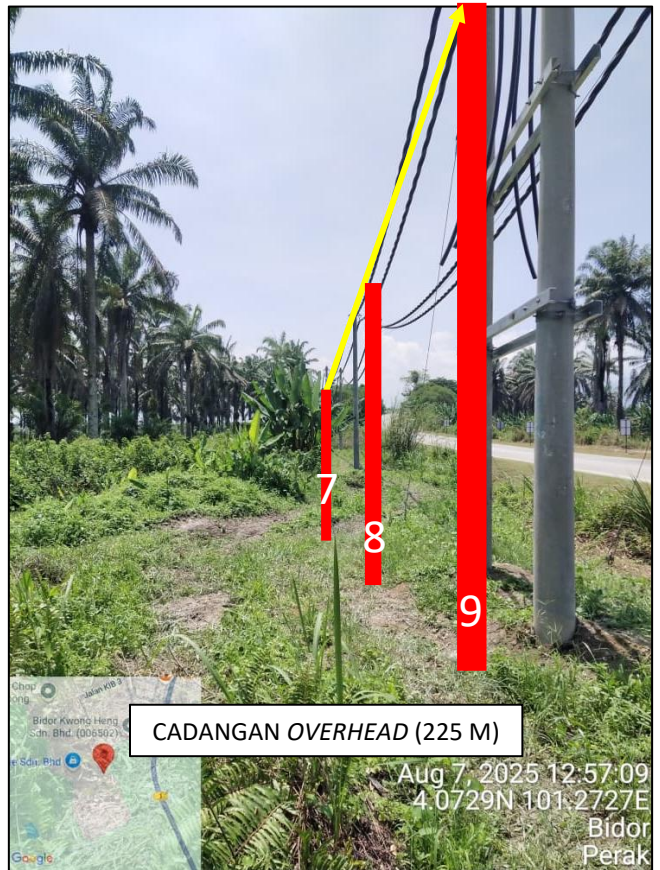


TALIAN SESALUR ATAS





GAMBAR 3 : KAWASAN KERJA MELIBATKAN OVERHEAD



GAMBAR 4 : KAWASAN KERJA MELIBATKAN OVERHEAD

KOORDINAT

Tiang 5 : 4.0735447, 101.2737259

Tiang 6 : 4.0733565, 101.2735269

Tiang 7 : 4.0731625, 101.2733388

Tiang 8 : 4.0729662, 101.2731548

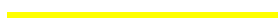
Tiang 9 : 4.0727737, 101.2729647

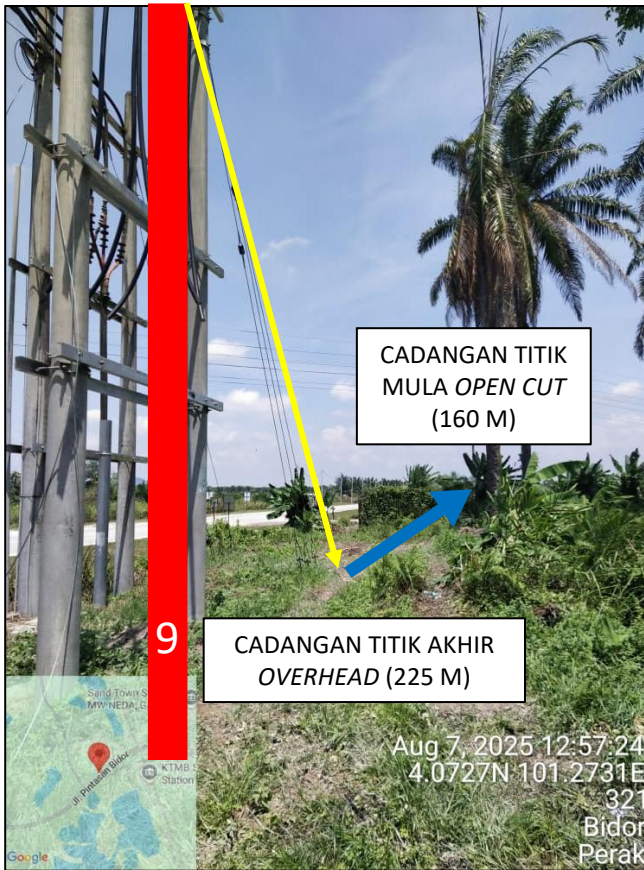
PETUNJUK

MENANAM TIANG



TALIAN SESALUR ATAS






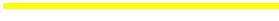

GAMBAR 5 : KAWASAN KERJA MELIBATKAN *OVERHEAD* DAN *OPEN CUT*



GAMBAR 6 : KAWASAN KERJA MELIBATKAN *OPEN CUT*

KOORDINAT

Tiang 9 : 4.0727737, 101.2729647



| <u>PETUNJUK</u>     |  |
|---------------------|--|
| MENANAM TIANG       |  |
| TALIAN SESALUR ATAS |  |
| KOREKAN TERBUKA     |  |



GAMBAR 7 : KAWASAN KERJA MELIBATKAN OPEN CUT DAN HORIZONTAL DIRECTIONAL DRILLING (HDD)



GAMBAR 8 : KAWASAN KERJA MELIBATKAN HORIZONTAL DIRECTIONAL DRILLING (HDD)

|                                       |  |
|---------------------------------------|--|
| <u>PETUNJUK</u>                       |  |
| HORIZONTAL DIRECTIONAL DRILLING (HDD) |  |
| KOREKAN TERBUKA                       |  |