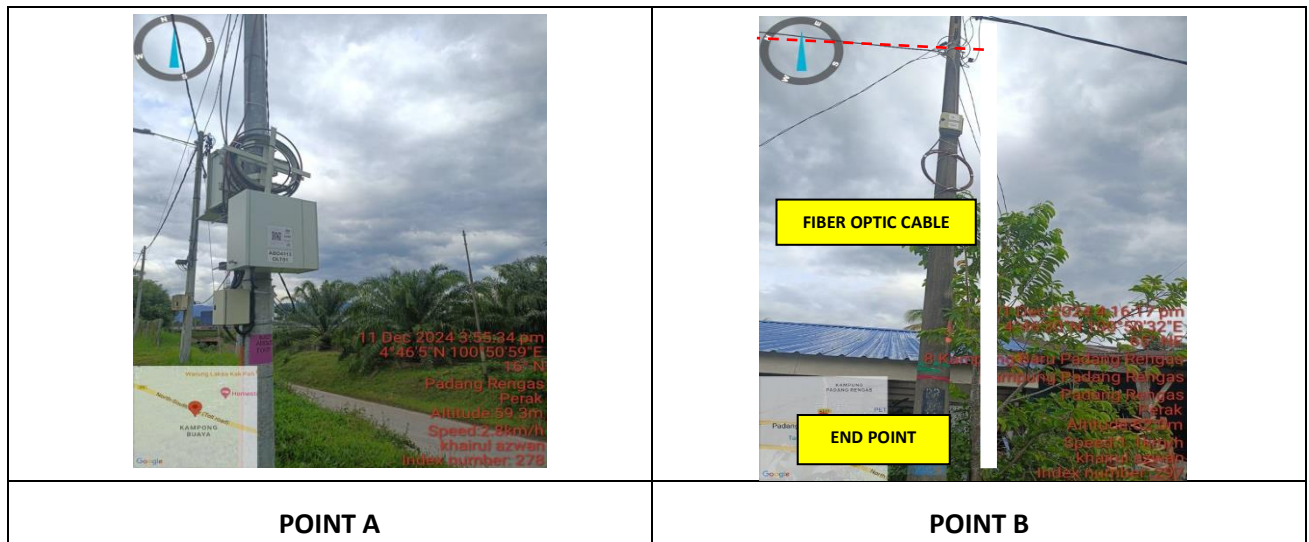


TECHNICAL PROPOSAL

ABD4113- SEKOLAH JENIS KEBANGSAAN (TAMIL) LADANG GAPIS (D-SIDE)

Company Name : ARATIMUR SDN BHD
Company Address : A-08-13, 8th Floor, Block A, Radia Office, Persiaran Singgahsana, 40150 Bukit Jelutong, Shah Alam, Selangor
Prepared By : Khairul Tajuddin
Date : 24/01/2025





Starting Point

Site / Boundary Name : Sekolah Jenis Kebangsaan (Tamil) Ladang Gapis
Address : Kampung Baru Padang Rengas
District : Padang Rengas
Postcode : 33700
State : Perak
GPS Coordinate : 4.768178, 100.849695
LRD : A

End Point

Site / Boundary Name : Kampung Baru Padang Rengas
Address : Kampung Padang Rengas
District : Padang Rengas
Postcode : 33
State : Perak
GPS Coordinate : 4.77500, 100.84229
LRD : B

| | | |
|---|--|---|
|  | <p align="center">PROJEK PENYEDIAAN DAN PENYELENGGARAAN POINT OF PRESENCE (POP) FASA 2: HAB INFRASTRUKTUR GENTIAN OPTIK BERHAMPIRAN DENGAN SEKOLAH, KAWASAN PERINDUSTRIAN, PREMIS KERAJAAN DAN KOMUNITI SEKITARNYA OLEH KEMENTERIAN KOMUNIKASI MALAYSIA - ZON UTARA (KKMM.400-11/17/132(1))</p> |  |
|---|--|---|

1.0 WORK SUMMARY

| NO | PROPOSED DISTANCE AND METHOD | UNIT | QUANTITY |
|----|---------------------------------------|------|----------|
| 1 | Horizontal Directional Drilling (HDD) | m | 0 |
| 2 | Carriage Way Open Trench (CW) | m | 0 |
| 3 | Grass Verge Open Trenching (GV) | m | 0 |
| 4 | Micro Trenching (MT) | m | 0 |
| | Total | | 0 |

| NO | OTHER INFORMATION | UNIT | QUANTITY |
|----|---|------|----------|
| 1 | Installation of Short Span ADSS Fibre Cables | m | 3617 |
| 2 | Install New Pole | ea | 112 |
| 3 | Install New JRC7 Manhole | ea | 0 |
| 4 | Install GI Riser 100mm | ea | 0 |
| 5 | Install Fiber Distribution Point and Closure (Splicing, Termination and Testing | ea | 22 |
| 6 | Estimated Time Required For Completion | days | 30 |



PROJEK PENYEDIAAN DAN PENYELENGGARAAN POINT OF PRESENCE (POP)
 FASA 2: HAB INFRASTRUKTUR GENTIAN OPTIK BERHAMPIRAN DENGAN
 SEKOLAH, KAWASAN PERINDUSTRIAN, PREMIS KERAJAAN DAN KOMUNITI
 SEKITARNYA OLEH KEMENTERIAN KOMUNIKASI MALAYSIA - ZON UTARA
 (KKMM.400-11/17/132(1))



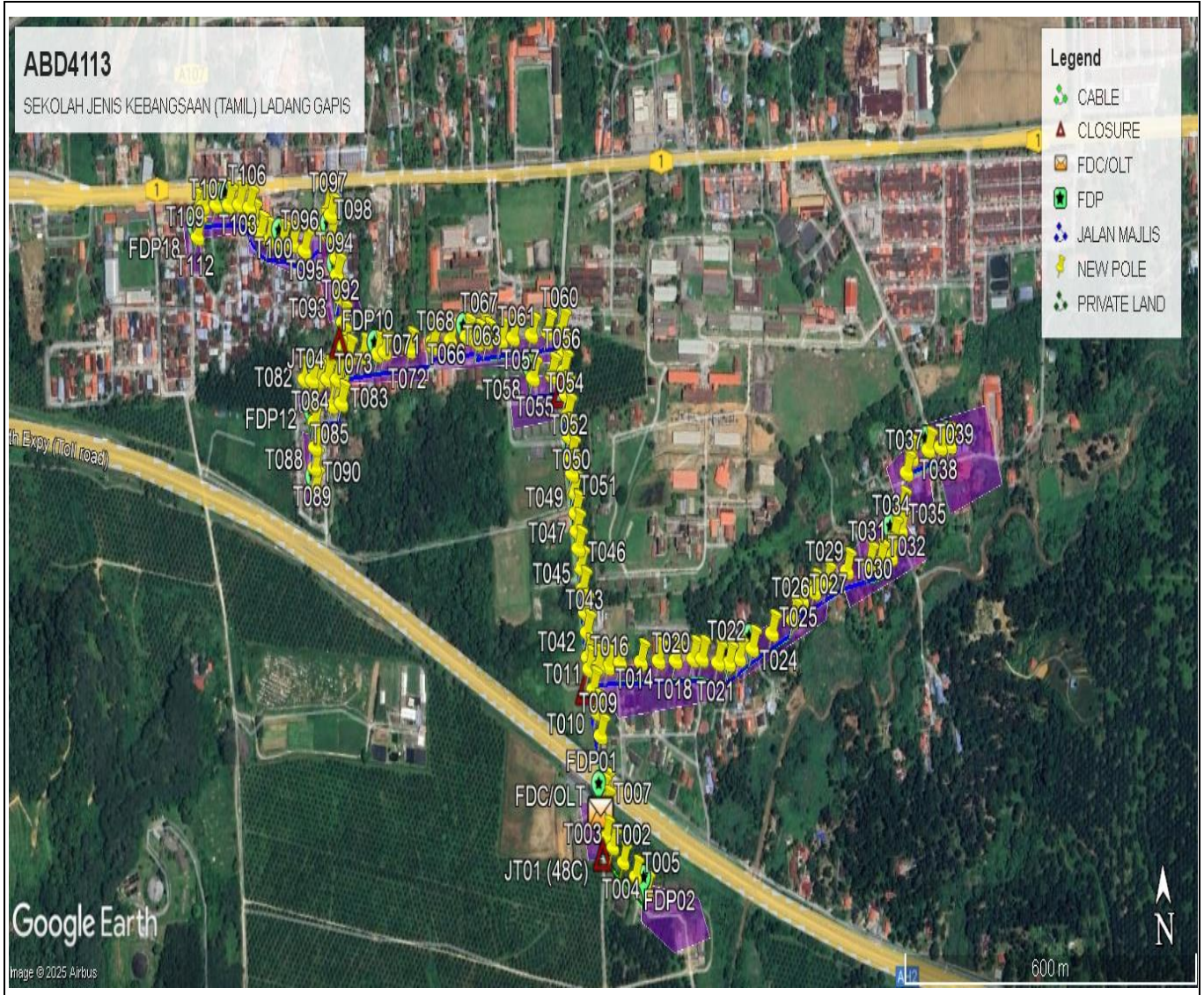
2.0 LOCAL AUTHORITY SUMMARY

Daerah Kuala Kangsar

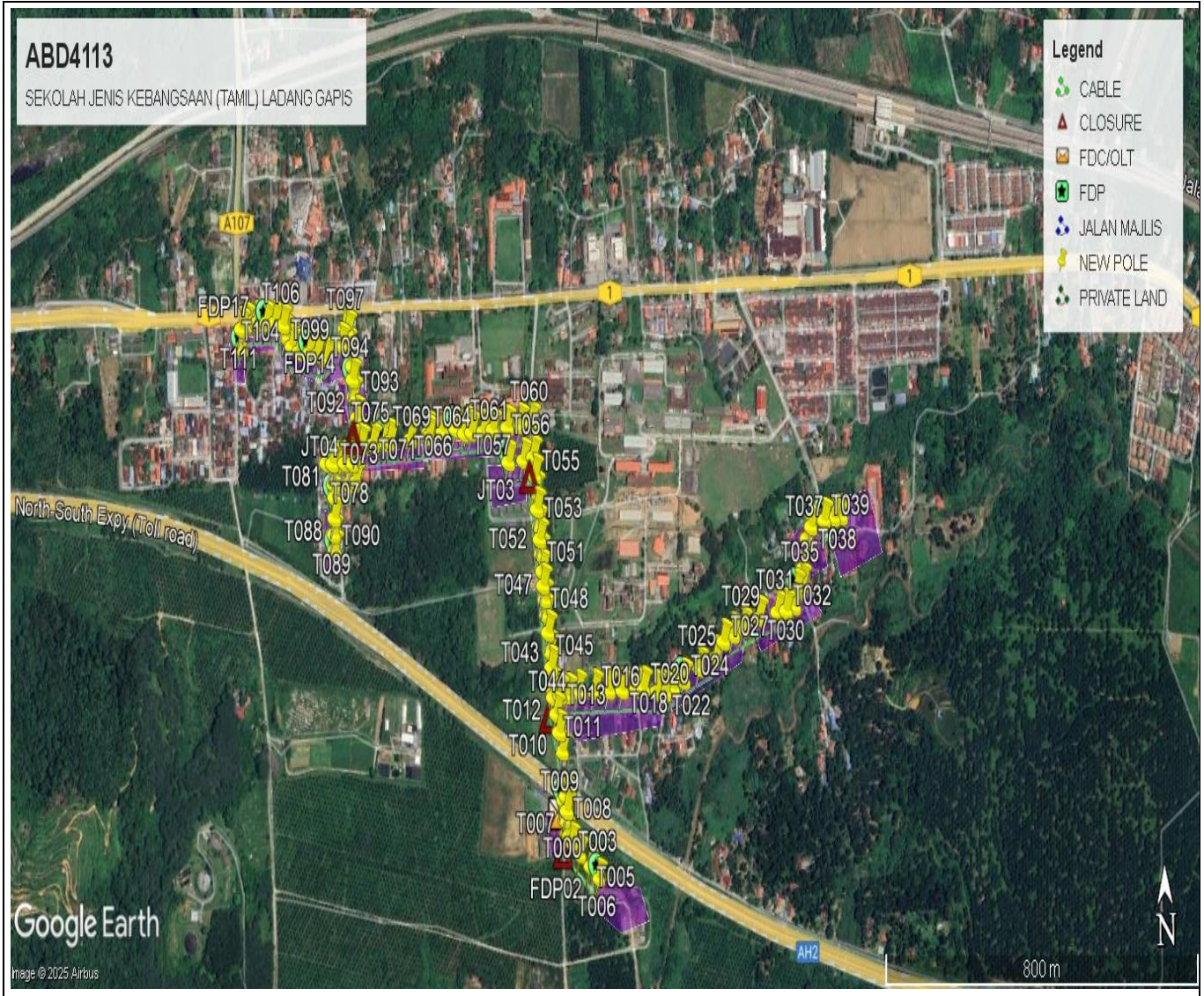
| NO | ITEMS | OWNER | QUANTITY | DISTANCE (m) |
|---------------------------|----------|-----------------------|----------|--------------|
| 1 | HDD | JKR | - | - |
| | | Majlis | - | - |
| | | Estate / Private Land | - | - |
| 2 | New Pole | JKR | - | - |
| | | Majlis | 109 | 3434 |
| | | Estate / Private Land | 3 | 183 |
| Total distance (m) | | | | 3617m |

3.0 SITE PLAN- KMZ

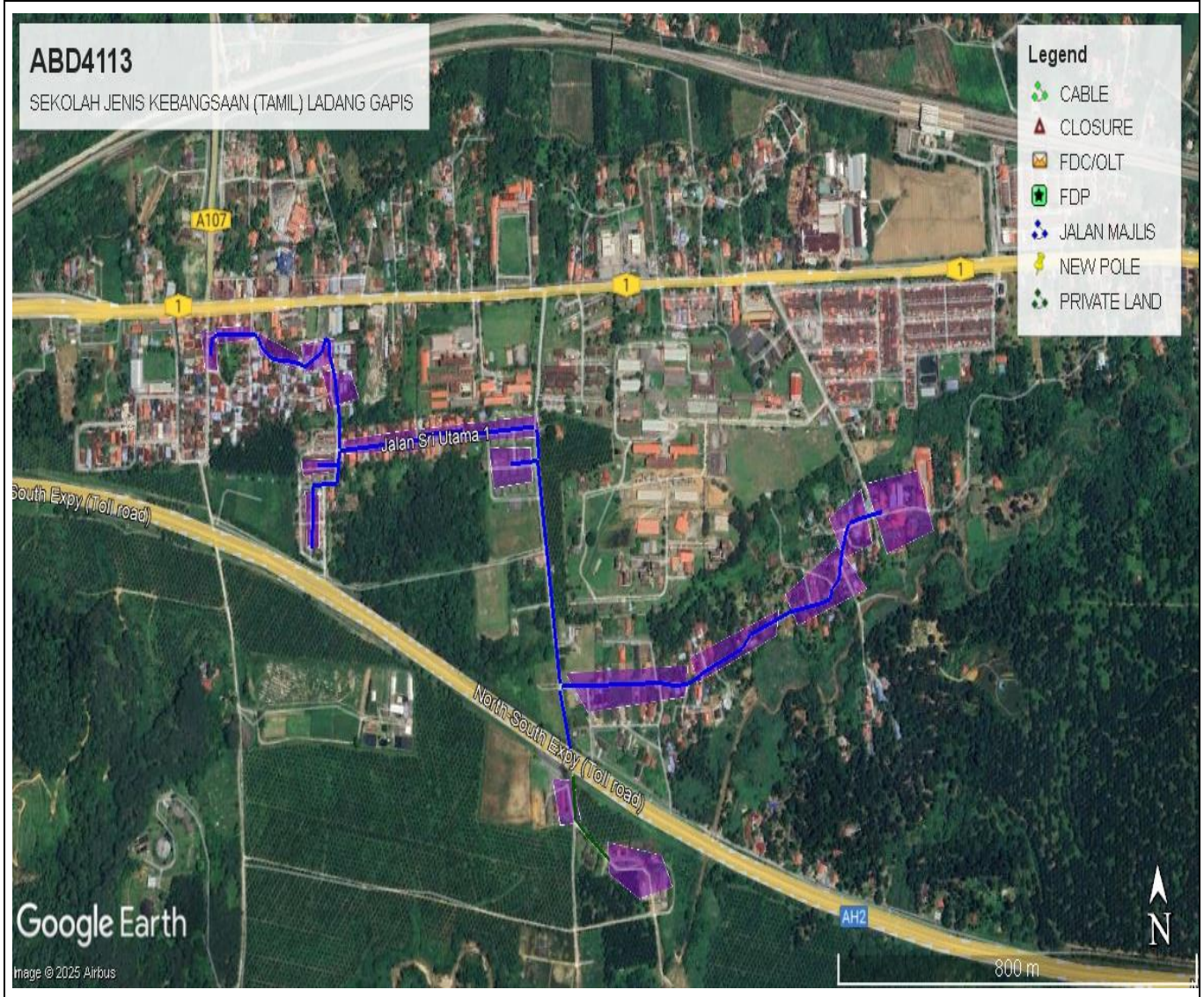
3.1 Overview Site Area



3.2 Site Boundry



3.3 Road Boundry



Green Colour- Estate/ Private Land
Blue Colour- Jalan Majlis Kuala Kangsar
Red Colour- JKR Kuala Kangsar

4.0 PROPOSED MANHOLE & HDD AND NEW POLE

| No. | Pole & Manhole ID | Distance | Latitude | Longitude | Local Authority |
|-----|-------------------|----------|----------|------------|----------------------------------|
| 1 | FDC T000 | | 4.768189 | 100.849692 | Estate Ladang Gapis |
| 2 | T001 | 35 | 4.768438 | 100.849665 | Estate Ladang Gapis |
| 3 | T002 | 35 | 4.767998 | 100.849736 | Estate Ladang Gapis |
| 4 | T003 | 35 | 4.767875 | 100.849856 | Estate Ladang Gapis |
| 5 | T004 | 35 | 4.767703 | 100.850045 | Estate Ladang Gapis |
| 6 | T005 | 35 | 4.767542 | 100.850267 | Estate Ladang Gapis |
| 7 | T006 | 35 | 4.767372 | 100.850469 | Estate Ladang Gapis |
| 8 | T007 | 35 | 4.76829 | 100.849744 | Estate Ladang Gapis |
| 9 | T008 | 35 | 4.7685 | 100.849727 | Estate Ladang Gapis |
| 10 | T009 | 35 | 4.769114 | 100.849656 | Majlis Perbandaran Kuala Kangsar |
| 11 | T010 | 35 | 4.769383 | 100.849598 | Majlis Perbandaran Kuala Kangsar |
| 12 | T011 | 35 | 4.769628 | 100.849535 | Majlis Perbandaran Kuala Kangsar |
| 13 | T012 | 70 | 4.769861 | 100.849465 | Majlis Perbandaran Kuala Kangsar |
| 14 | T013 | 35 | 4.76987 | 100.849634 | Majlis Perbandaran Kuala Kangsar |
| 15 | T014 | 35 | 4.76987 | 100.849818 | Majlis Perbandaran Kuala Kangsar |
| 16 | T015 | 35 | 4.769919 | 100.850045 | Majlis Perbandaran Kuala Kangsar |
| 17 | T016 | 35 | 4.769906 | 100.850427 | Majlis Perbandaran Kuala Kangsar |
| 18 | T017 | 35 | 4.769909 | 100.850758 | Majlis Perbandaran Kuala Kangsar |
| 19 | T018 | 35 | 4.769906 | 100.851073 | Majlis Perbandaran Kuala Kangsar |
| 20 | T019 | 35 | 4.769917 | 100.851399 | Majlis Perbandaran Kuala Kangsar |
| 21 | T020 | 35 | 4.769916 | 100.851561 | Majlis Perbandaran Kuala Kangsar |
| 22 | T021 | 35 | 4.769862 | 100.851859 | Majlis Perbandaran Kuala Kangsar |
| 23 | T022 | 35 | 4.769844 | 100.852055 | Majlis Perbandaran Kuala Kangsar |
| 24 | T023 | 35 | 4.769897 | 100.852254 | Majlis Perbandaran Kuala Kangsar |
| 25 | T024 | 35 | 4.769999 | 100.852499 | Majlis Perbandaran Kuala Kangsar |
| 26 | T025 | 35 | 4.770162 | 100.852867 | Majlis Perbandaran Kuala Kangsar |
| 27 | T026 | 35 | 4.770294 | 100.853264 | Majlis Perbandaran Kuala Kangsar |
| 28 | T027 | 35 | 4.770515 | 100.853436 | Majlis Perbandaran Kuala Kangsar |
| 29 | T028 | 35 | 4.770597 | 100.853664 | Majlis Perbandaran Kuala Kangsar |
| 30 | T029 | 35 | 4.770677 | 100.853898 | Majlis Perbandaran Kuala Kangsar |
| 31 | T030 | 35 | 4.770813 | 100.854277 | Majlis Perbandaran Kuala Kangsar |
| 32 | T031 | 35 | 4.77088 | 100.854696 | Majlis Perbandaran Kuala Kangsar |
| 33 | T032 | 35 | 4.770894 | 100.854896 | Majlis Perbandaran Kuala Kangsar |
| 34 | T033 | 35 | 4.770947 | 100.8551 | Majlis Perbandaran Kuala Kangsar |
| 35 | T034 | 35 | 4.771154 | 100.855146 | Majlis Perbandaran Kuala Kangsar |
| 36 | T035 | 35 | 4.771246 | 100.855291 | Majlis Perbandaran Kuala Kangsar |
| 37 | T036 | 35 | 4.771471 | 100.855319 | Majlis Perbandaran Kuala Kangsar |
| 38 | T037 | 35 | 4.771877 | 100.855415 | Majlis Perbandaran Kuala Kangsar |
| 39 | T038 | 35 | 4.772039 | 100.85552 | Majlis Perbandaran Kuala Kangsar |
| 40 | T039 | 35 | 4.772117 | 100.855823 | Majlis Perbandaran Kuala Kangsar |
| 41 | T040 | 35 | 4.772144 | 100.856052 | Majlis Perbandaran Kuala Kangsar |
| 42 | T041 | 35 | 4.772164 | 100.856229 | Majlis Perbandaran Kuala Kangsar |
| 43 | T042 | 35 | 4.769981 | 100.849445 | Majlis Perbandaran Kuala Kangsar |
| 44 | T043 | 35 | 4.77026 | 100.849437 | Majlis Perbandaran Kuala Kangsar |
| 45 | T044 | 35 | 4.770483 | 100.849408 | Majlis Perbandaran Kuala Kangsar |
| 46 | T045 | 35 | 4.770746 | 100.849374 | Majlis Perbandaran Kuala Kangsar |
| 47 | T046 | 35 | 4.770986 | 100.849337 | Majlis Perbandaran Kuala Kangsar |
| 48 | T047 | 35 | 4.7712 | 100.849303 | Majlis Perbandaran Kuala Kangsar |

| | | | | | |
|-----|------|----|----------|------------|----------------------------------|
| 49 | T048 | 35 | 4.771394 | 100.849275 | Majlis Perbandaran Kuala Kangsar |
| 50 | T049 | 35 | 4.771592 | 100.849261 | Majlis Perbandaran Kuala Kangsar |
| 51 | T050 | 35 | 4.77183 | 100.849235 | Majlis Perbandaran Kuala Kangsar |
| 52 | T051 | 35 | 4.772035 | 100.849213 | Majlis Perbandaran Kuala Kangsar |
| 53 | T052 | 35 | 4.772217 | 100.849196 | Majlis Perbandaran Kuala Kangsar |
| 54 | T053 | 35 | 4.77245 | 100.849159 | Majlis Perbandaran Kuala Kangsar |
| 55 | T054 | 35 | 4.772687 | 100.849141 | Majlis Perbandaran Kuala Kangsar |
| 56 | T055 | 35 | 4.772916 | 100.849115 | Majlis Perbandaran Kuala Kangsar |
| 57 | T056 | 35 | 4.773176 | 100.849091 | Majlis Perbandaran Kuala Kangsar |
| 58 | T057 | 35 | 4.773137 | 100.848865 | Majlis Perbandaran Kuala Kangsar |
| 59 | T058 | 35 | 4.773122 | 100.848512 | Majlis Perbandaran Kuala Kangsar |
| 60 | T059 | 35 | 4.773375 | 100.84909 | Majlis Perbandaran Kuala Kangsar |
| 61 | T060 | 35 | 4.773638 | 100.849062 | Majlis Perbandaran Kuala Kangsar |
| 62 | T061 | 35 | 4.773622 | 100.848803 | Majlis Perbandaran Kuala Kangsar |
| 63 | T062 | 35 | 4.773598 | 100.848494 | Majlis Perbandaran Kuala Kangsar |
| 64 | T063 | 35 | 4.773578 | 100.848154 | Majlis Perbandaran Kuala Kangsar |
| 65 | T064 | 35 | 4.773558 | 100.847938 | Majlis Perbandaran Kuala Kangsar |
| 66 | T065 | 35 | 4.773556 | 100.847666 | Majlis Perbandaran Kuala Kangsar |
| 67 | T066 | 35 | 4.773547 | 100.847499 | Majlis Perbandaran Kuala Kangsar |
| 68 | T067 | 35 | 4.773621 | 100.847577 | Majlis Perbandaran Kuala Kangsar |
| 69 | T068 | 35 | 4.773611 | 100.847293 | Majlis Perbandaran Kuala Kangsar |
| 70 | T069 | 35 | 4.773585 | 100.846999 | Majlis Perbandaran Kuala Kangsar |
| 71 | T070 | 35 | 4.77358 | 100.84666 | Majlis Perbandaran Kuala Kangsar |
| 72 | T071 | 35 | 4.773518 | 100.846666 | Majlis Perbandaran Kuala Kangsar |
| 73 | T072 | 35 | 4.773494 | 100.846237 | Majlis Perbandaran Kuala Kangsar |
| 74 | T073 | 35 | 4.773487 | 100.845776 | Majlis Perbandaran Kuala Kangsar |
| 75 | T074 | 35 | 4.773466 | 100.845642 | Majlis Perbandaran Kuala Kangsar |
| 76 | T075 | 35 | 4.773451 | 100.845369 | Majlis Perbandaran Kuala Kangsar |
| 77 | T076 | 35 | 4.773443 | 100.845098 | Majlis Perbandaran Kuala Kangsar |
| 78 | T077 | 70 | 4.773426 | 100.845001 | Majlis Perbandaran Kuala Kangsar |
| 79 | T078 | 35 | 4.773204 | 100.844883 | Majlis Perbandaran Kuala Kangsar |
| 80 | T079 | 35 | 4.773214 | 100.844702 | Majlis Perbandaran Kuala Kangsar |
| 81 | T080 | 35 | 4.77321 | 100.844532 | Majlis Perbandaran Kuala Kangsar |
| 82 | T081 | 35 | 4.773212 | 100.844417 | Majlis Perbandaran Kuala Kangsar |
| 83 | T082 | 35 | 4.773221 | 100.844275 | Majlis Perbandaran Kuala Kangsar |
| 84 | T083 | 35 | 4.773126 | 100.844985 | Majlis Perbandaran Kuala Kangsar |
| 85 | T084 | 35 | 4.77294 | 100.844954 | Majlis Perbandaran Kuala Kangsar |
| 86 | T085 | 35 | 4.772921 | 100.844786 | Majlis Perbandaran Kuala Kangsar |
| 87 | T086 | 35 | 4.772928 | 100.844435 | Majlis Perbandaran Kuala Kangsar |
| 88 | T087 | 35 | 4.772744 | 100.844455 | Majlis Perbandaran Kuala Kangsar |
| 89 | T088 | 35 | 4.772457 | 100.844451 | Majlis Perbandaran Kuala Kangsar |
| 90 | T089 | 35 | 4.772234 | 100.844439 | Majlis Perbandaran Kuala Kangsar |
| 91 | T090 | 35 | 4.772011 | 100.844445 | Majlis Perbandaran Kuala Kangsar |
| 92 | T091 | 35 | 4.773575 | 100.845 | Majlis Perbandaran Kuala Kangsar |
| 93 | T092 | 35 | 4.773834 | 100.845006 | Majlis Perbandaran Kuala Kangsar |
| 94 | T093 | 35 | 4.774124 | 100.844936 | Majlis Perbandaran Kuala Kangsar |
| 95 | T094 | 35 | 4.774365 | 100.844914 | Majlis Perbandaran Kuala Kangsar |
| 96 | T095 | 35 | 4.774551 | 100.844906 | Majlis Perbandaran Kuala Kangsar |
| 97 | T096 | 35 | 4.774805 | 100.84481 | Majlis Perbandaran Kuala Kangsar |
| 98 | T097 | 41 | 4.680892 | 100.938037 | Majlis Perbandaran Kuala Kangsar |
| 99 | T098 | 35 | 4.775077 | 100.844741 | Majlis Perbandaran Kuala Kangsar |
| 100 | T099 | 35 | 4.774853 | 100.844659 | Majlis Perbandaran Kuala Kangsar |

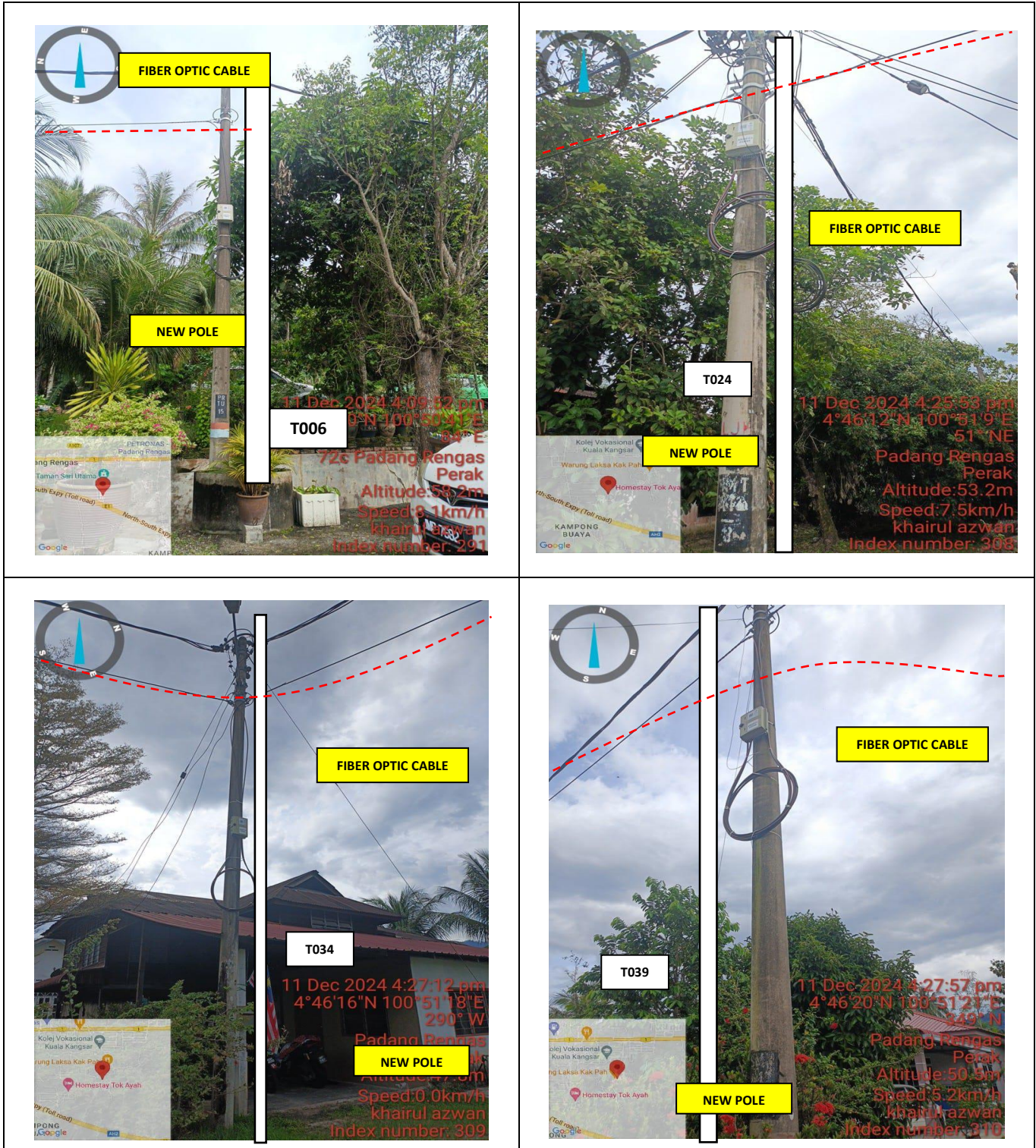


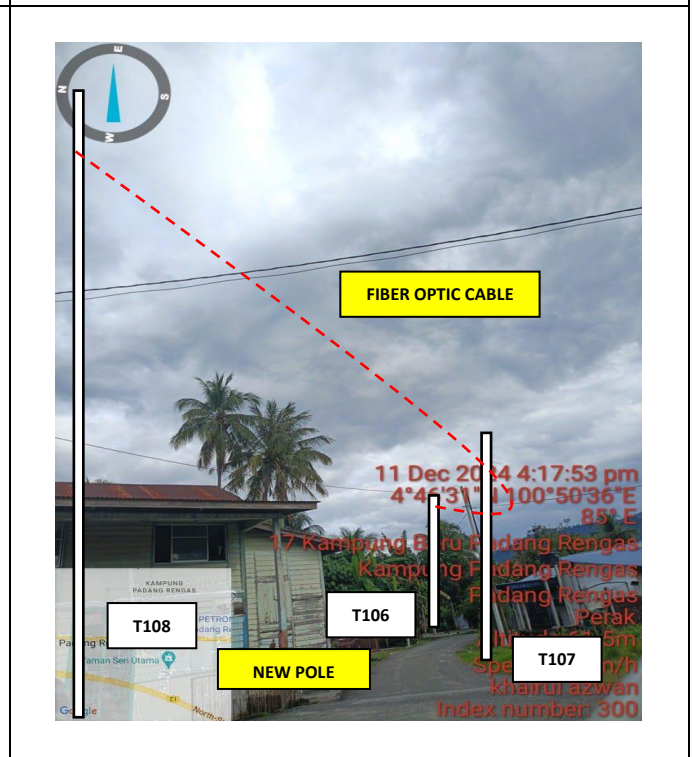
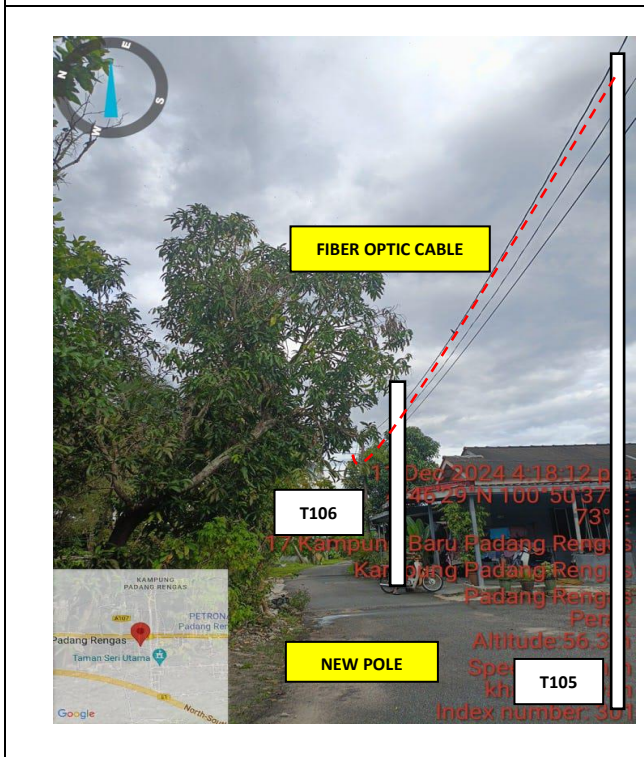
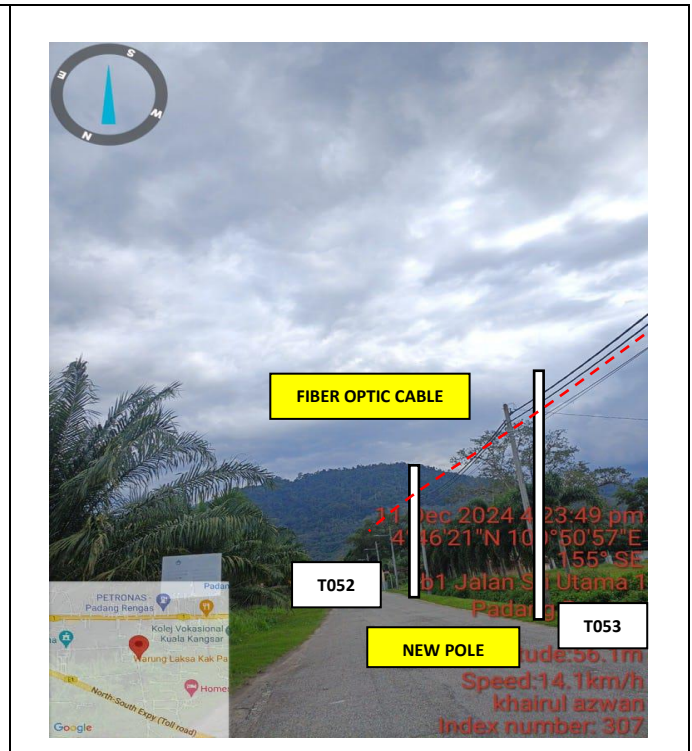
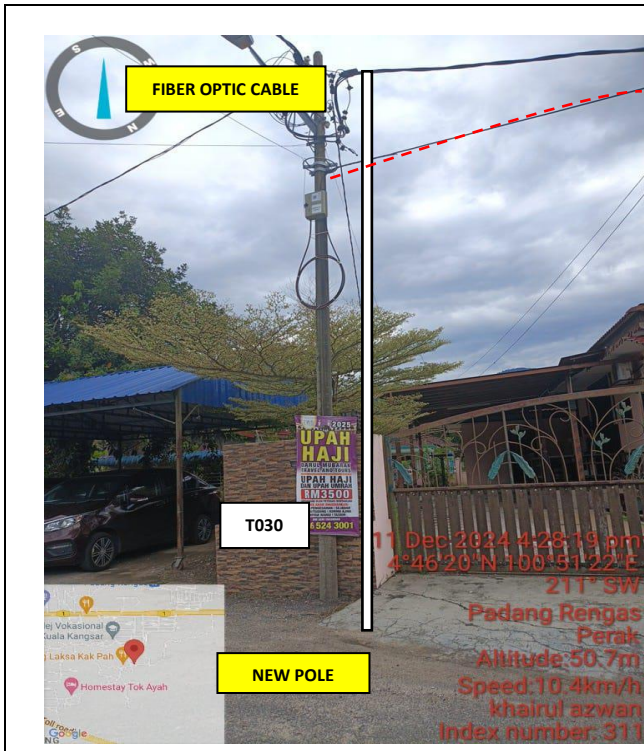
**PROJEK PENYEDIAAN DAN PENYELENGGARAAN POINT OF PRESENCE (POP)
 FASA 2: HAB INFRASTRUKTUR GENTIAN OPTIK BERHAMPIRAN DENGAN
 SEKOLAH, KAWASAN PERINDUSTRIAN, PREMIS KERAJAAN DAN KOMUNITI
 SEKITARNYA OLEH KEMENTERIAN KOMUNIKASI MALAYSIA - ZON UTARA
 (KKMM.400-11/17/132(1))**





| | | | | | |
|-----|------|----|----------|------------|----------------------------------|
| 101 | T100 | 35 | 4.774657 | 100.844315 | Majlis Perbandaran Kuala Kangsar |
| 102 | T101 | 35 | 4.774734 | 100.844099 | Majlis Perbandaran Kuala Kangsar |
| 103 | T102 | 35 | 4.774758 | 100.843906 | Majlis Perbandaran Kuala Kangsar |
| 104 | T103 | 35 | 4.774785 | 100.84366 | Majlis Perbandaran Kuala Kangsar |
| 105 | T104 | 35 | 4.774862 | 100.843507 | Majlis Perbandaran Kuala Kangsar |
| 106 | T105 | 35 | 4.775009 | 100.843366 | Majlis Perbandaran Kuala Kangsar |
| 107 | T106 | 35 | 4.775162 | 100.843308 | Majlis Perbandaran Kuala Kangsar |
| 108 | T107 | 35 | 4.775202 | 100.843122 | Majlis Perbandaran Kuala Kangsar |
| 109 | T108 | 35 | 4.775204 | 100.842922 | Majlis Perbandaran Kuala Kangsar |
| 110 | T109 | 35 | 4.77521 | 100.842693 | Majlis Perbandaran Kuala Kangsar |
| 111 | T110 | 35 | 4.775202 | 100.842446 | Majlis Perbandaran Kuala Kangsar |
| 112 | T111 | 35 | 4.775138 | 100.842333 | Majlis Perbandaran Kuala Kangsar |
| 113 | T112 | 35 | 4.774863 | 100.842335 | Majlis Perbandaran Kuala Kangsar |

5.0 SITE PHOTO- PROPOSED MANHOLE & HDD AND NEW POLE





| | | |
|---|---|---|
|  | <p style="text-align: center;">PROJEK PENYEDIAAN DAN PENYELENGGARAAN POINT OF PRESENCE (POP) FASA 2: HAB INFRASTRUKTUR GENTIAN OPTIK BERHAMPIRAN DENGAN SEKOLAH, KAWASAN PERINDUSTRIAN, PREMIS KERAJAAN DAN KOMUNITI SEKITARNYA OLEH KEMENTERIAN KOMUNIKASI MALAYSIA - ZON UTARA (KKMM.400-11/17/132(1))</p> |  |
|---|---|---|

6.0 3rd PARTIES DEPENDENCIES

| NO. | LOCAL COUNCIL/ AUTHORITY | REMARK |
|-----|----------------------------------|--------|
| 1 | Majlis Perbandaran Kuala Kangsar | |
| 2 | Estate Ladang Gapis | |

