

TECHNICAL PROPOSAL

POP2 ABD1078 SEKOLAH JENIS KEBANGSAAN TAMIL LADANG HUNTLY (D-SIDE)

Company Name : KNZ ENGINEERING SDN BHD
Company Address : NO 60 & 60 A JALAN KLEBANG INDAH 1 MEDAN KLEBANG INDAH 30010 IPOH PERAK
Prepared By : SEVANTHI A/P SELVAM
Date : 12/06/2025



Starting Point

Site / Boundary Name : Pantai Remis
Address : SJK (T) Ladang Huntly, 34900 Pantai Remis, Perak
District : Manjung
Postcode : 34900
State : Perak
GPS Coordinate : 4.43172720299999, 100.6977595
LRD : A

End Point

Site / Boundary Name : Pantai Remis
Address : Kampung 40 Rantai, Changkat Keruing, 34900 Pantai Remis, Perak
District : Manjung
Postcode : 34900
State : Perak
GPS Coordinate : 4.41988855208527, 100.701722062098
LRD : B



PROJEK PENYEDIAAN DAN PENYELENGGARAAN POINT OF PRESENCE (POP) FASA 2: HAB INFRASTRUKTUR GENTIAN OPTIK BERHAMPIRAN DENGAN SEKOLAH, KAWASAN PERINDUSTRIAN, PREMIS KERAJAAN DAN KOMUNITI SEKITARNYA OLEH KEMENTERIAN KOMUNIKASI MALAYSIA – ZON UTARA (KKMM.400-11/17/132(1))



1.0 WORK SUMMARY

NO	PROPOSED DISTANCE AND METHOD	UNIT	QUANTITY
1	Horizontal Directional Drilling (HDD)	m	0
2	Carriage Way Open Trench (CW)	m	0
3	Grass Verge Open Trenching (GV)	m	0
4	Micro Trenching (MT)	m	0
Total			0

NO	OTHER INFORMATION	UNIT	QUANTITY
1	Installation of Short Span ADSS Fibre Cables	m	6,250
2	Install New Pole	ea	109
3	Install New JRC7 Manhole	ea	0
4	Install GI Riser 100mm	ea	0
5	Install Fiber Distribution Point	ea	13
6	Install Closure	ea	2
7	Estimated Time Required for Completion	days	30

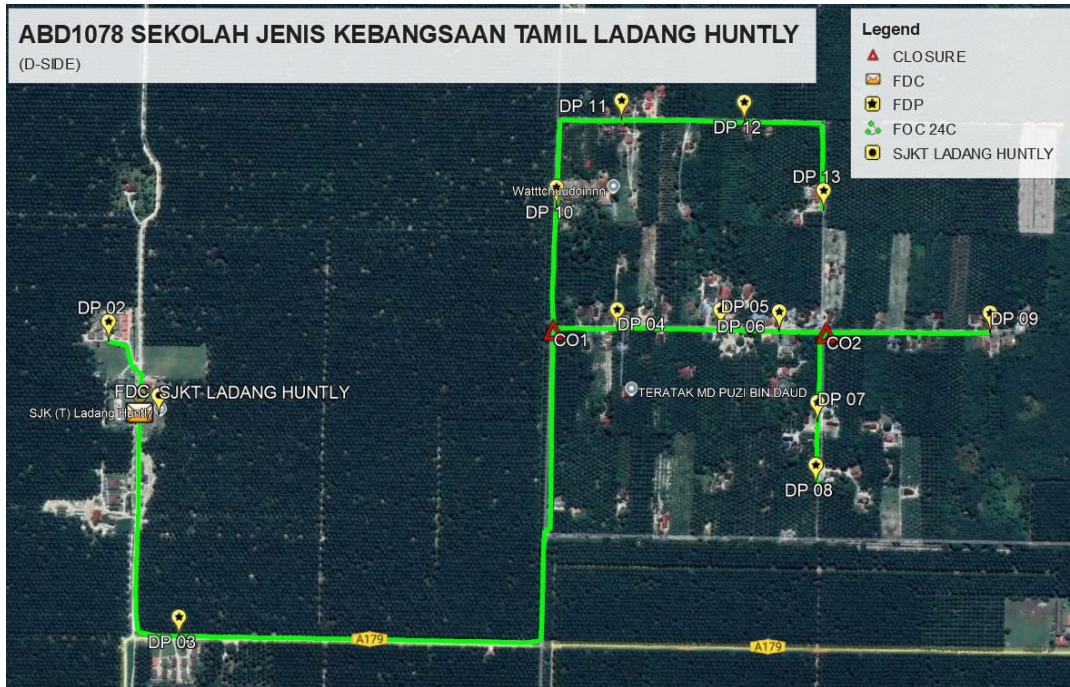
2.0 LOCAL AUTHORITY SUMMARY

Daerah Manjung

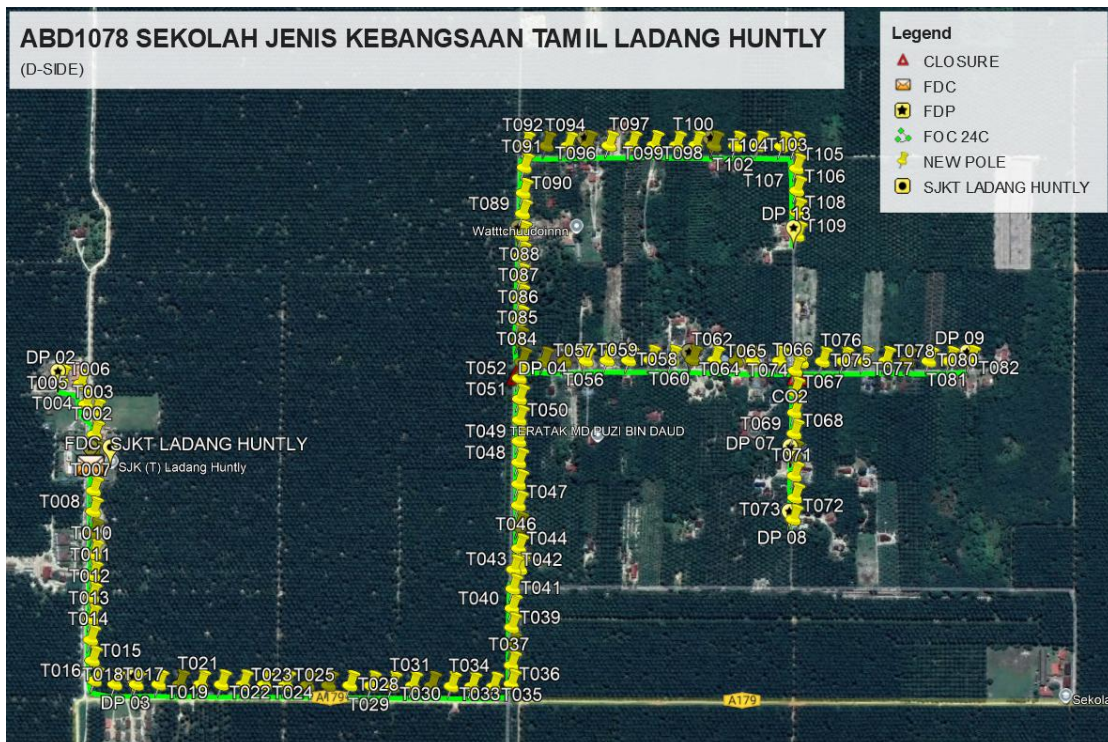
Bil	Items	Owner	Quantity	Distance
1	HDD	JKR	-	-
		PDT	-	-
		Estate / Private Land	-	-
2	New Pole	JKR	-	-
		PDT	74	3,200m
		Estate / Private	35	2,450m
3	Existing TNB Pole	JKR	-	-
		PDT	-	-
		Estate / Private Land	-	-
Total				5,650m

Site Plan – KMZ (Overview site area)

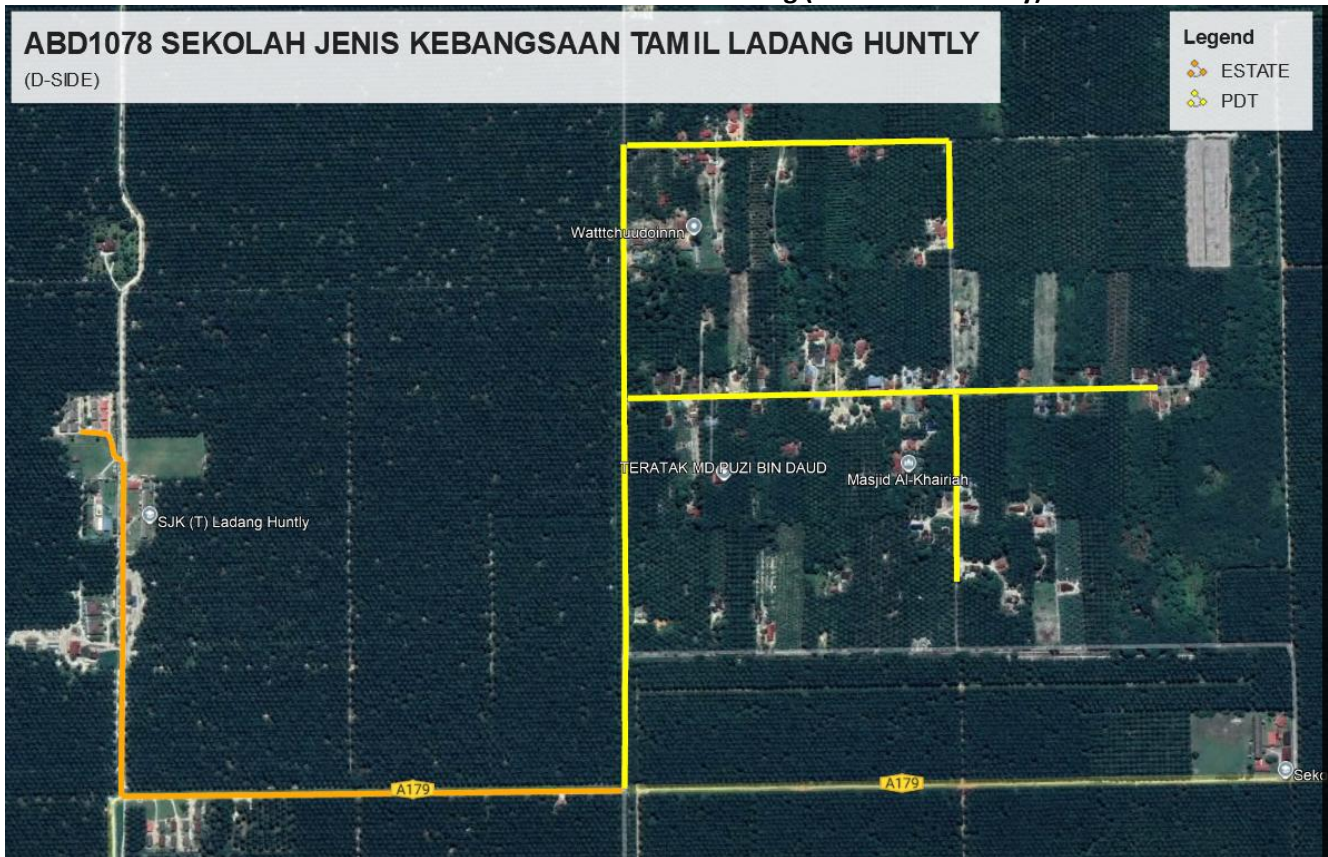
Proposed FDP and Closure



Proposed New Pole

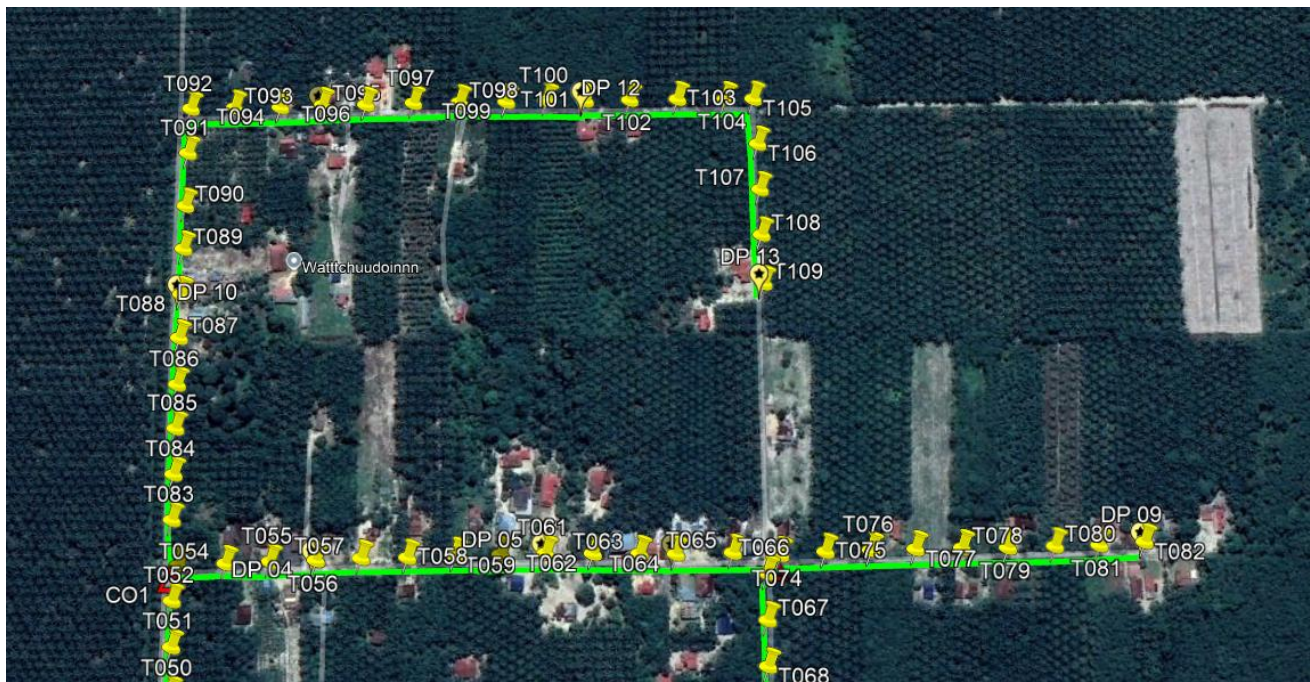
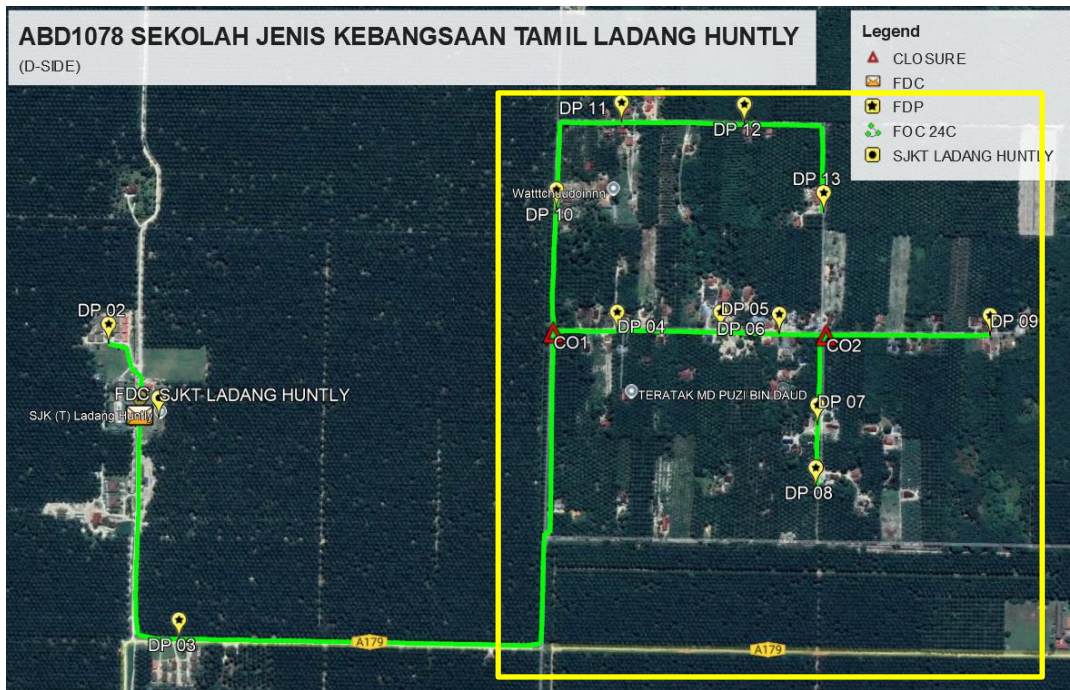


Site Plan – KMZ Routing (All Local Authority)

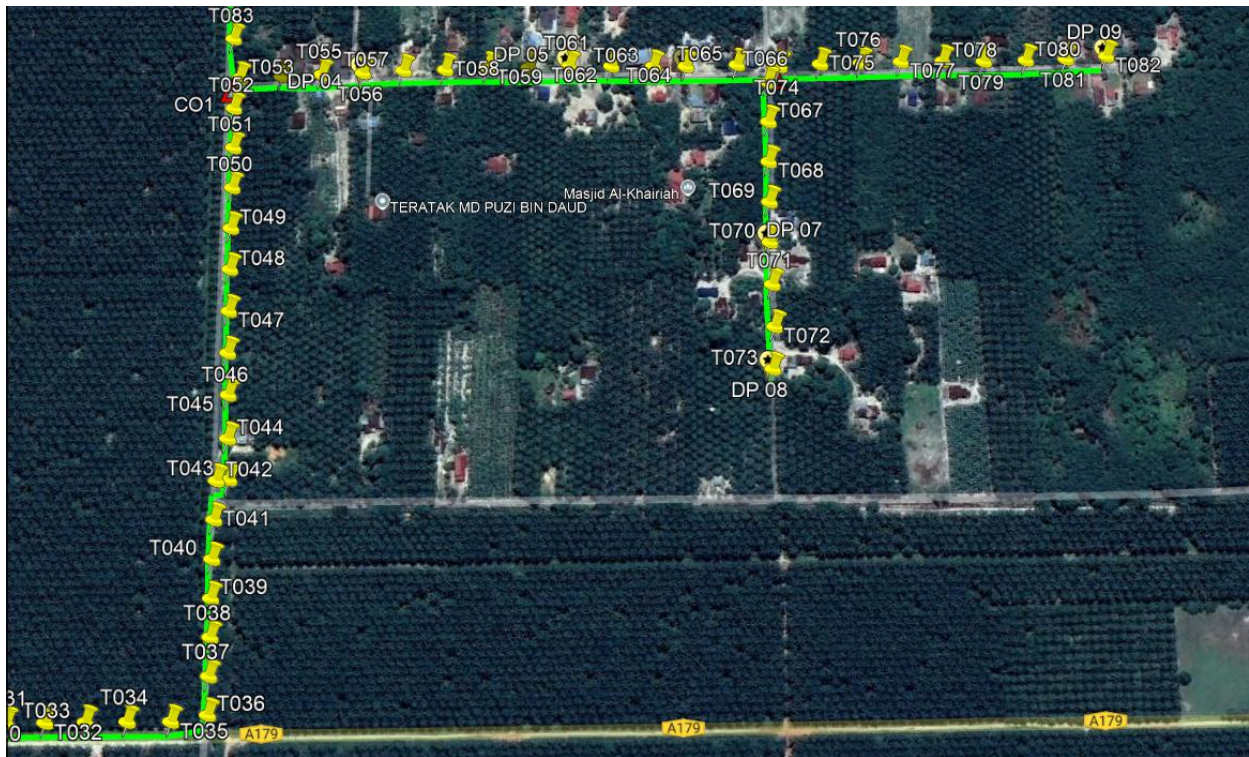


PDT Road – Yellow Colour
Estate Road – Oren Colour

Route 1

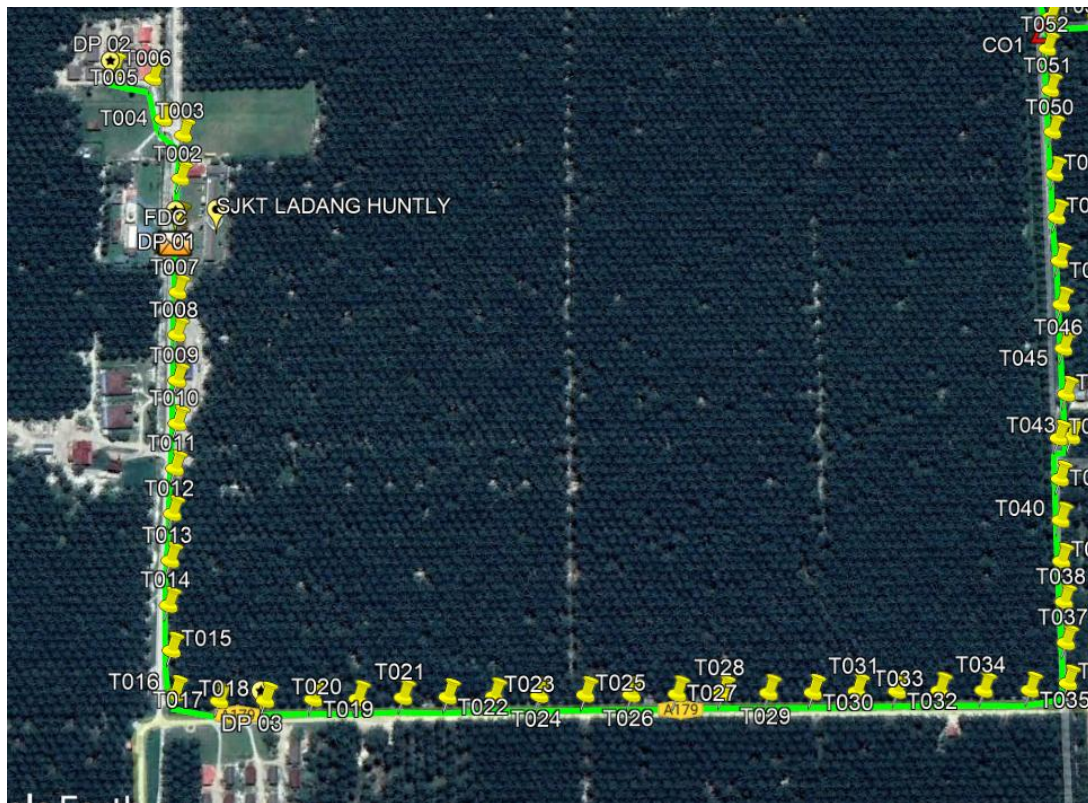
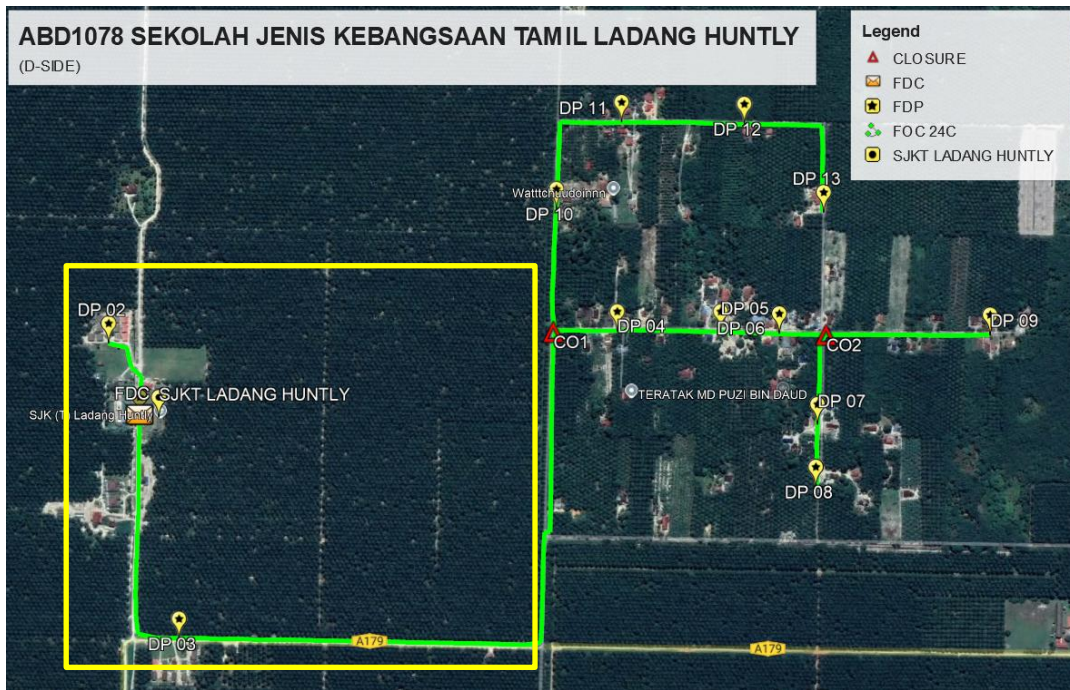


Route 1.1



Route 1.2

Route 2



Route 2.1

3.0 PROPOSED NEW POLE

Proposed New Pole Coordinate					
No.	Pole Number	Distance (m)	Latitude	Longitude	Local Authority
1	T001	40	4.431727203	100.6977595	Huntly Estate
2	T002	40	4.431726197	100.6981038	Huntly Estate
3	T003	40	4.431721838	100.6984746	Huntly Estate
4	T004	40	4.431895008	100.6986161	Huntly Estate
5	T005	40	4.431989556	100.6989611	Huntly Estate
6	T006	40	4.43231578	100.6990362	Huntly Estate
7	T007	40	4.431710104	100.697151	Huntly Estate
8	T008	40	4.431705745	100.6967996	Huntly Estate
9	T009	40	4.431689987	100.6964274	Huntly Estate
10	T010	40	4.431677079	100.6960777	Huntly Estate
11	T011	40	4.431681773	100.6957143	Huntly Estate
12	T012	40	4.43168764	100.6953525	Huntly Estate
13	T013	40	4.431688646	100.6949807	Huntly Estate
14	T104	40	4.431691328	100.6946287	Huntly Estate
15	T015	40	4.431656962	100.6942763	Huntly Estate
16	T016	40	4.431618908	100.6939393	Huntly Estate
17	T017	40	4.43126888	100.6938834	Huntly Estate
18	T018	40	4.430906111	100.6938877	Huntly Estate
19	T019	40	4.430530099	100.6938961	Huntly Estate
20	T020	40	4.430179736	100.6938988	Huntly Estate
21	T021	40	4.429822164	100.6939108	Huntly Estate
22	T022	40	4.429470124	100.6939145	Huntly Estate
23	T023	40	4.429103499	100.6939199	Huntly Estate
24	T024	40	4.428747436	100.6939256	Huntly Estate
25	T025	40	4.428385673	100.69393	Huntly Estate
26	T026	40	4.428024078	100.69393	Huntly Estate
27	T027	40	4.427662985	100.693935	Huntly Estate

4.0 PROPOSED NEW POLE

Proposed New Pole Coordinate					
No.	Pole Number	Distance (m)	Latitude	Longitude	Local Authority
28	T028	40	4.427303402	100.6939414	Huntly Estate
29	T029	40	4.426941974	100.6939461	Huntly Estate
30	T030	40	4.426591611	100.6939481	Huntly Estate
31	T031	40	4.426243426	100.6939554	Huntly Estate
32	T032	40	4.425924411	100.6939568	Huntly Estate
33	T033	40	4.425588464	100.6939618	Huntly Estate
34	T034	40	4.425241621	100.6939655	Huntly Estate
35	T035	40	4.424878517	100.6939675	Huntly Estate
36	T036	40	4.424576601	100.6940212	PDT Manjung
37	T037	40	4.424579618	100.694336	PDT Manjung
38	T038	40	4.424581965	100.6946558	PDT Manjung
39	T039	40	4.424589342	100.694977	PDT Manjung
40	T040	40	4.42458733	100.6953026	PDT Manjung
41	T041	40	4.424581965	100.6956328	PDT Manjung
42	T042	40	4.424576936	100.6959601	PDT Manjung
43	T043	40	4.42447233	100.6959704	PDT Manjung
44	T044	40	4.424496805	100.6963185	PDT Manjung
45	T045	40	4.424505187	100.6966913	PDT Manjung
46	T046	40	4.424516251	100.6970504	PDT Manjung
47	T047	40	4.424518095	100.6974115	PDT Manjung
48	T048	40	4.424525807	100.6977776	PDT Manjung
49	T049	40	4.424529495	100.698138	PDT Manjung
50	T050	40	4.424531842	100.6984978	PDT Manjung
51	T051	40	4.424535194	100.6988552	PDT Manjung
52	T052	40	4.424545253	100.6992106	PDT Manjung
53	T053	40	4.424505858	100.6994851	PDT Manjung
54	T054	40	4.424134707	100.6994989	PDT Manjung

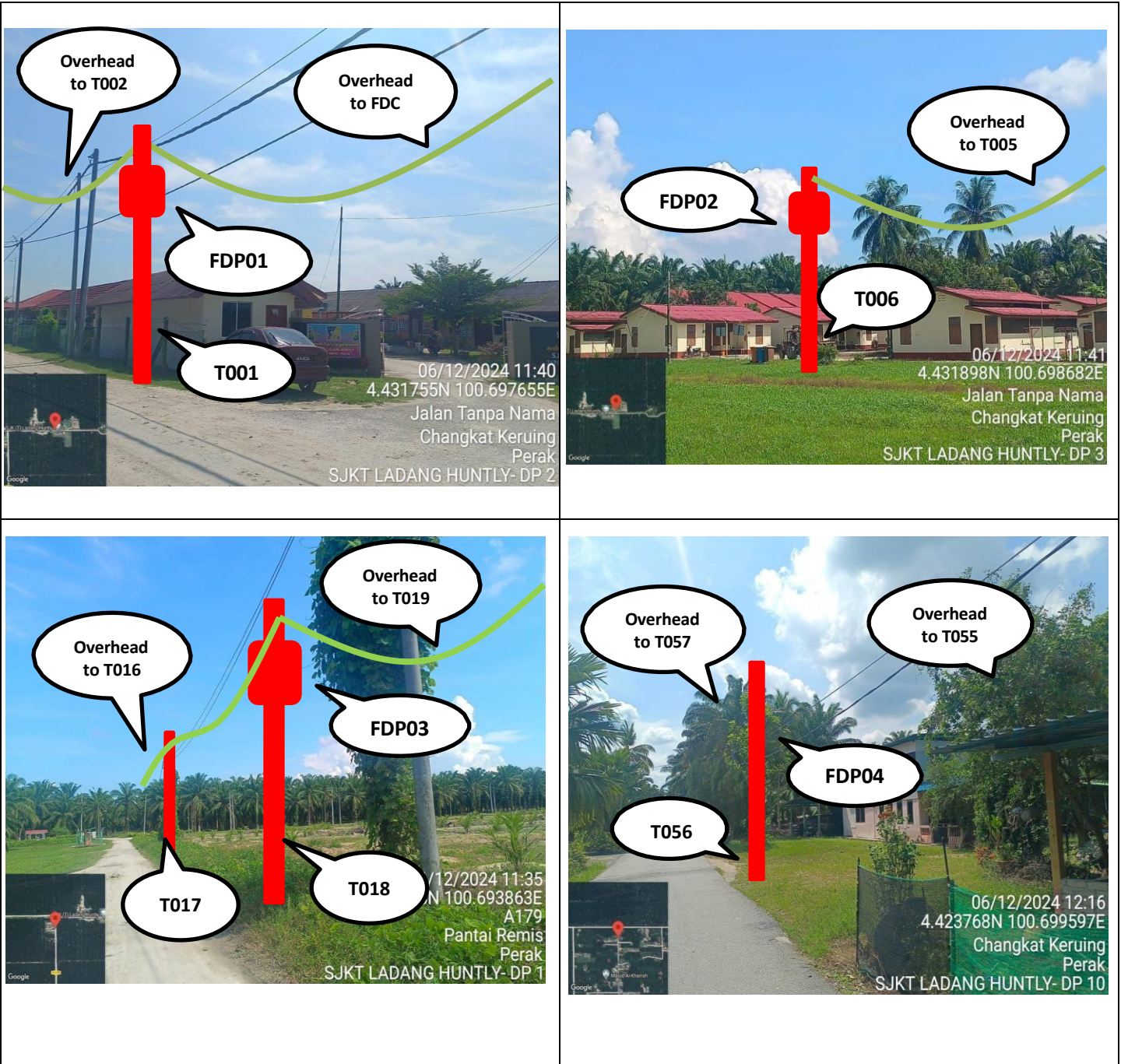
4.0 PROPOSED NEW POLE

Proposed New Pole Coordinate					
No.	Pole Number	Distance (m)	Latitude	Longitude	Local Authority
55	T055	40	4.423786523	100.6995147	PDT Manjung
56	T056	40	4.423423419	100.6995261	PDT Manjung
57	T057	40	4.423066014	100.6995425	PDT Manjung
58	T058	40	4.422701066	100.6995485	PDT Manjung
59	T059	40	4.42232958	100.6995646	PDT Manjung
60	T060	40	4.421972679	100.6995703	PDT Manjung
61	T061	40	4.421618292	100.6995817	PDT Manjung
62	T062	40	4.421247644	100.6995804	PDT Manjung
63	T063	40	4.420882864	100.6995787	PDT Manjung
64	T064	40	4.420597376	100.6995767	PDT Manjung
65	T065	40	4.420151124	100.6995881	PDT Manjung
66	T066	40	4.419885082	100.6994278	PDT Manjung
67	T067	40	4.419884076	100.6990694	PDT Manjung
68	T068	40	4.419883406	100.6987154	PDT Manjung
69	T069	40	4.419881059	100.6983616	PDT Manjung
70	T070	40	4.419879047	100.6980106	PDT Manjung
71	T071	40	4.419862212	100.6976442	PDT Manjung
72	T072	40	4.419846427	100.6972759	PDT Manjung
73	T073	40	4.419868132	100.6969094	PDT Manjung
74	T074	40	4.419781147	100.6995706	PDT Manjung
75	T075	40	4.419424748	100.6995955	PDT Manjung
76	T076	40	4.419067176	100.6996072	PDT Manjung
77	T077	40	4.418718154	100.6996166	PDT Manjung
78	T078	40	4.418352032	100.6996243	PDT Manjung
79	T079	40	4.417989431	100.6996273	PDT Manjung
80	T080	40	4.417619286	100.6996384	PDT Manjung
81	T081	40	4.417273281	100.6996471	PDT Manjung

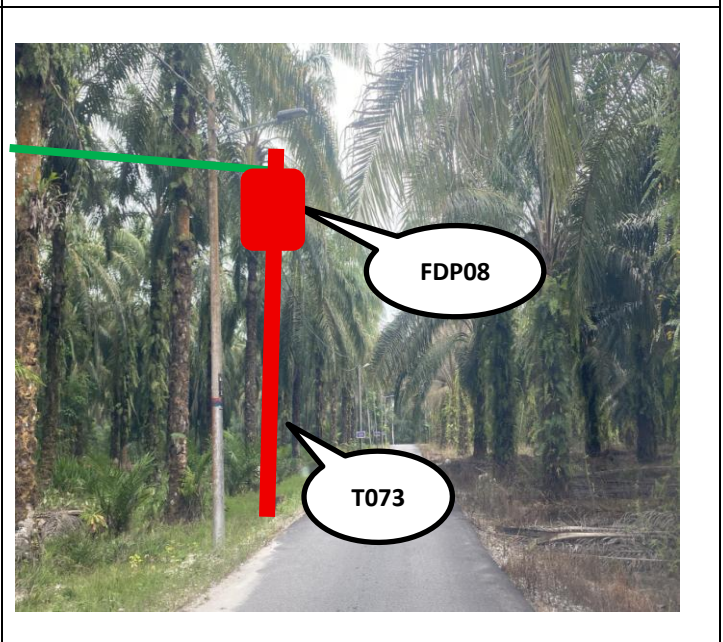
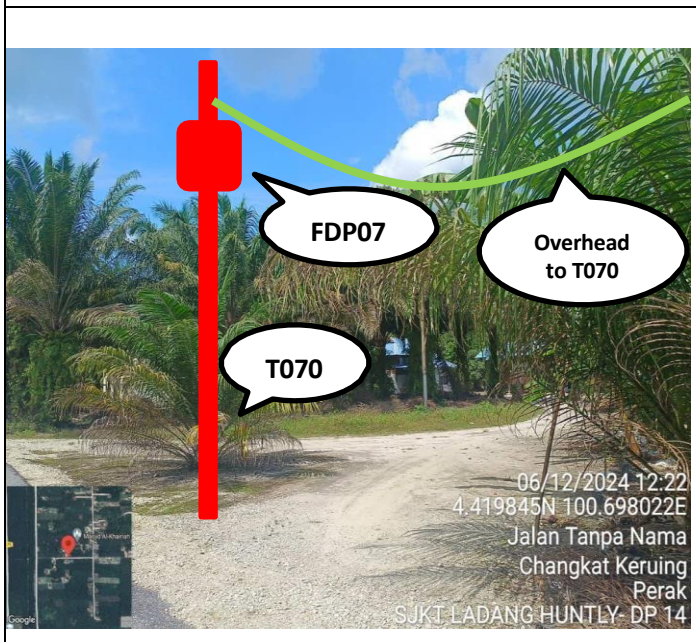
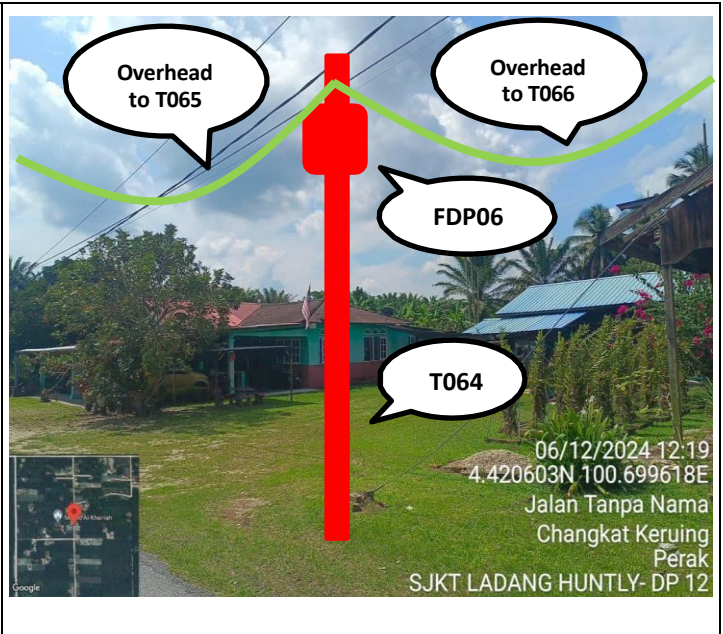
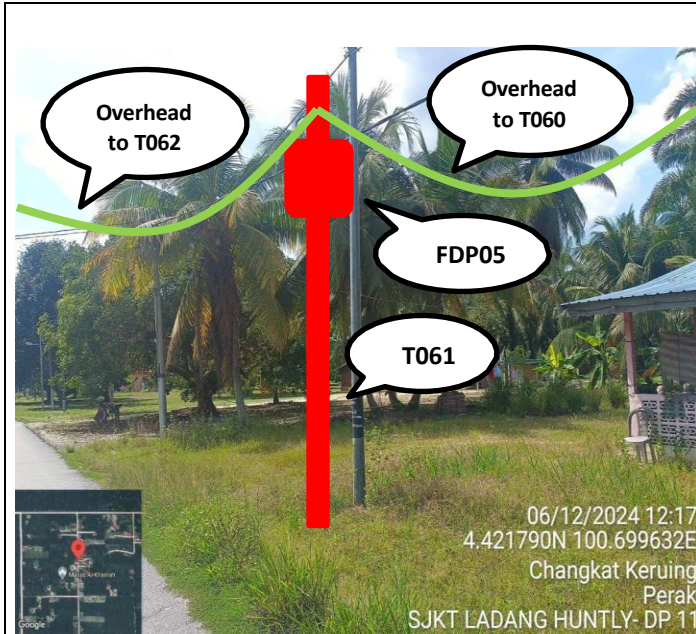
4.0 PROPOSED NEW POLE

Proposed New Pole Coordinate					
No.	Pole Number	Distance (m)	Latitude	Longitude	Local Authority
82	T082	40	4.416915709	100.6996726	PDT Manjung
83	T083	40	4.424568387	100.6998402	PDT Manjung
84	T084	40	4.424567716	100.7001986	PDT Manjung
85	T085	40	4.424564028	100.7005614	PDT Manjung
86	T086	40	4.424561346	100.7009114	PDT Manjung
87	T087	40	4.424560005	100.7012852	PDT Manjung
88	T088	40	4.424554305	100.7016363	PDT Manjung
89	T089	40	4.42454827	100.7020051	PDT Manjung
90	T090	40	4.424543576	100.7023548	PDT Manjung
91	T091	40	4.424534859	100.702789	PDT Manjung
92	T092	40	4.424526477	100.7031578	PDT Manjung
93	T093	40	4.424170246	100.7031645	PDT Manjung
94	T094	40	4.423803119	100.7031735	PDT Manjung
95	T095	40	4.423464825	100.7031953	PDT Manjung
96	T096	40	4.423108364	100.7031947	PDT Manjung
97	T097	40	4.422720629	100.7032058	PDT Manjung
98	T098	40	4.422344067	100.7032089	PDT Manjung
99	T099	40	4.421964441	100.7032125	PDT Manjung
100	T100	40	4.421638059	100.7032282	PDT Manjung
101	T101	40	4.421326203	100.7032276	PDT Manjung
102	T102	40	4.420961626	100.7032302	PDT Manjung
103	T103	40	4.420575081	100.7032343	PDT Manjung
104	T104	40	4.420186942	100.7032335	PDT Manjung
105	T105	40	4.419959578	100.7032384	PDT Manjung
106	T106	40	4.419925957	100.702864	PDT Manjung
107	T107	40	4.41991023	100.7024913	PDT Manjung
108	T108	40	4.419900795	100.7021205	PDT Manjung
109	T109	40	4.419888552	100.7017221	PDT Manjung

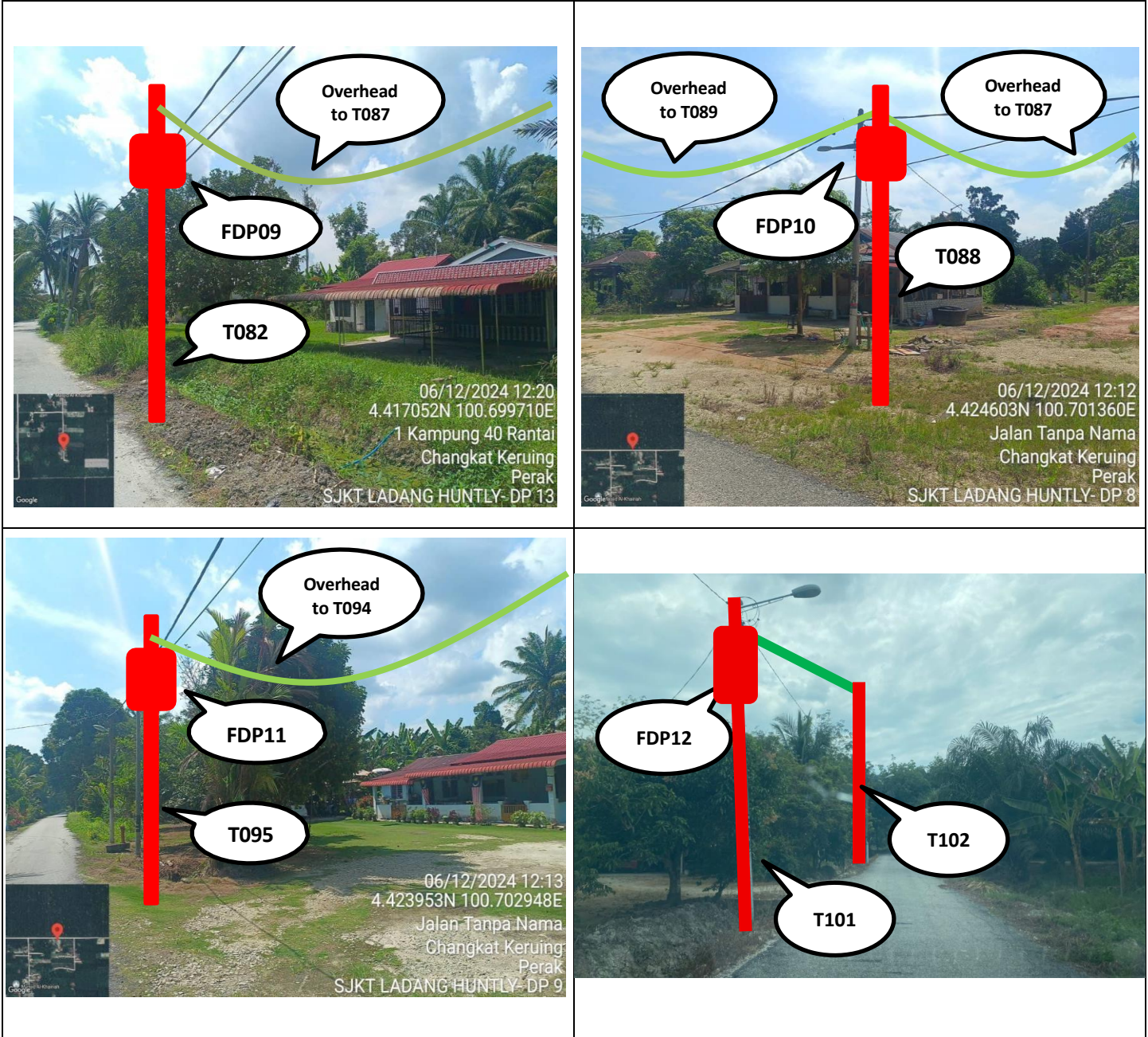
4.0 SITE PHOTOS - PROPOSED NEW POLE



5.0 SITE PHOTOS - PROPOSED NEW POLE



5.0 SITE PHOTOS - PROPOSED NEW POLE



5.0 SITE PHOTOS - PROPOSED NEW POLE



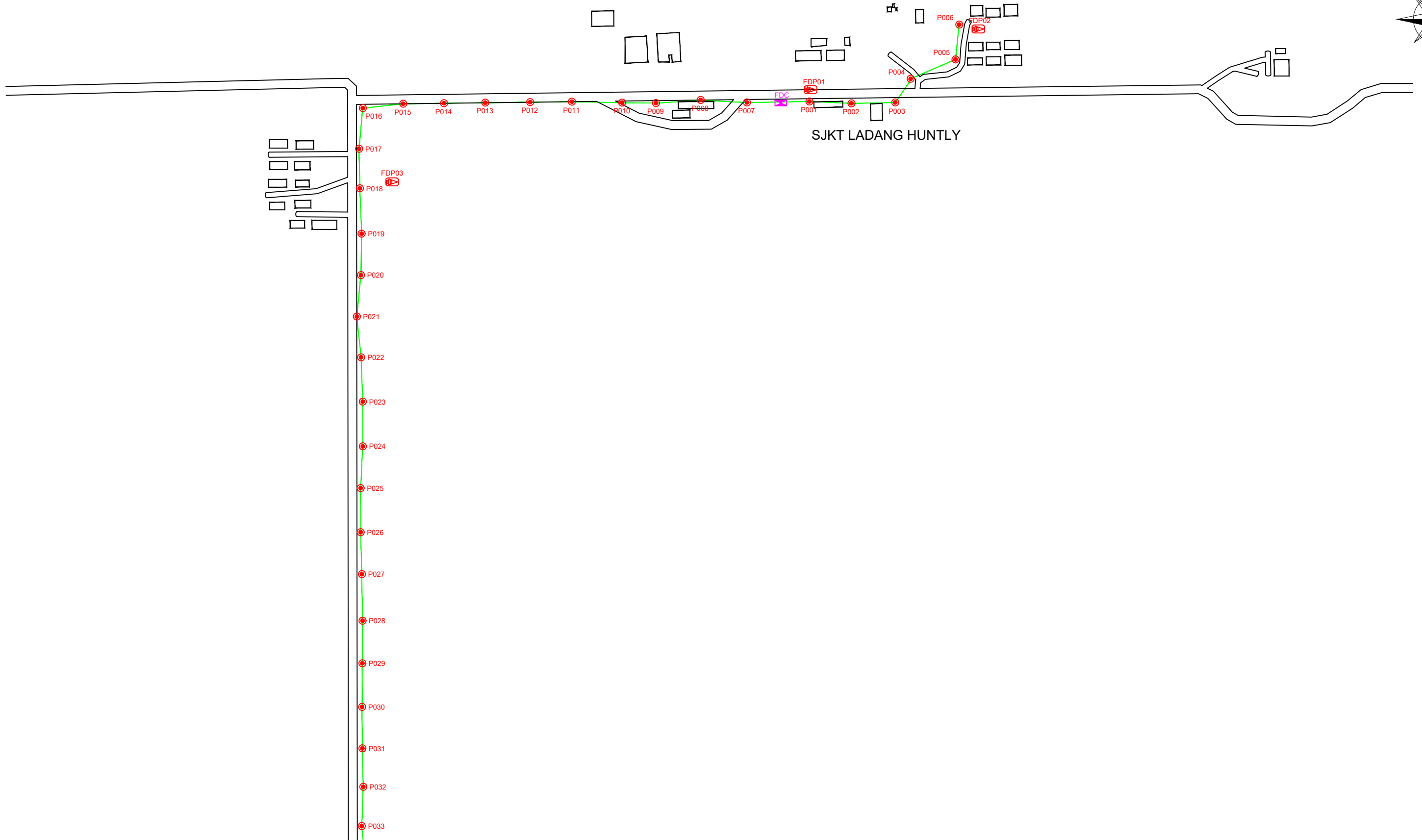


PROJEK PENYEDIAAN DAN PENYELENGGARAAN POINT OF PRESENCE (POP) FASA 2: HAB INFRASTRUKTUR GENTIAN OPTIK BERHAMPIRAN DENGAN SEKOLAH, KAWASAN PERINDUSTRIAN, PREMIS KERAJAAN DAN KOMUNITI SEKITARNYA OLEH KEMENTERIAN KOMUNIKASI MALAYSIA – ZON UTARA (KKMM.400-11/17/132(1))



5.0 3rd PARTIES DEPENDENCIES

NO	LOCAL COUNCIL / AUTHORITY	REMARK
1	PDT Manjung	3,200M
2	Huntly Estate	2,450M



LEGEND

	12C FOC		Installed 1:4 splitter in FDC		INSTALLED POLE (9M)		NEW MANHOLE		TS / TB TENSION SMALL / TENSION BIG		MH1 MH NO.
	24C FOC		FDP		INSTALLED RISER		EXISTING MANHOLE		EXISTING SMALL / TENSION BIG		EXISTING TNB POLE NO.
	48C FOC		CLOSURE		SUSPENSION BIG		EXISTING ALLO POLE		CLOSURE NO.		NEW POLE NO.
	90C FOC		NEW MANHOLE (PT)		SUSPENSION SMALL		LOOP		FDP NO.		
	144C FOC		INSTALLED POLE		FDC		FDP BOUNDARY		FDC NO.		

KEY PLAN

PROJECT OWNER

MAIN CONTRACTOR

SUB-CONTRACTOR

KNZ ENGINEERING SDN BHD
 NO. 60 & 60A, Jalan Kiebang Indah 1, Medan Kiebang Indah, 30100 Ipoh, Perak
 No Tel: 019-3695071
 Email: admin@knzengineering.com.my
 Website: www.knzengineering.com.my

PROJECT TITLE

SEKOLAH JENIS KEBANGSAAN (TAMIL) LADANG HUNTLY

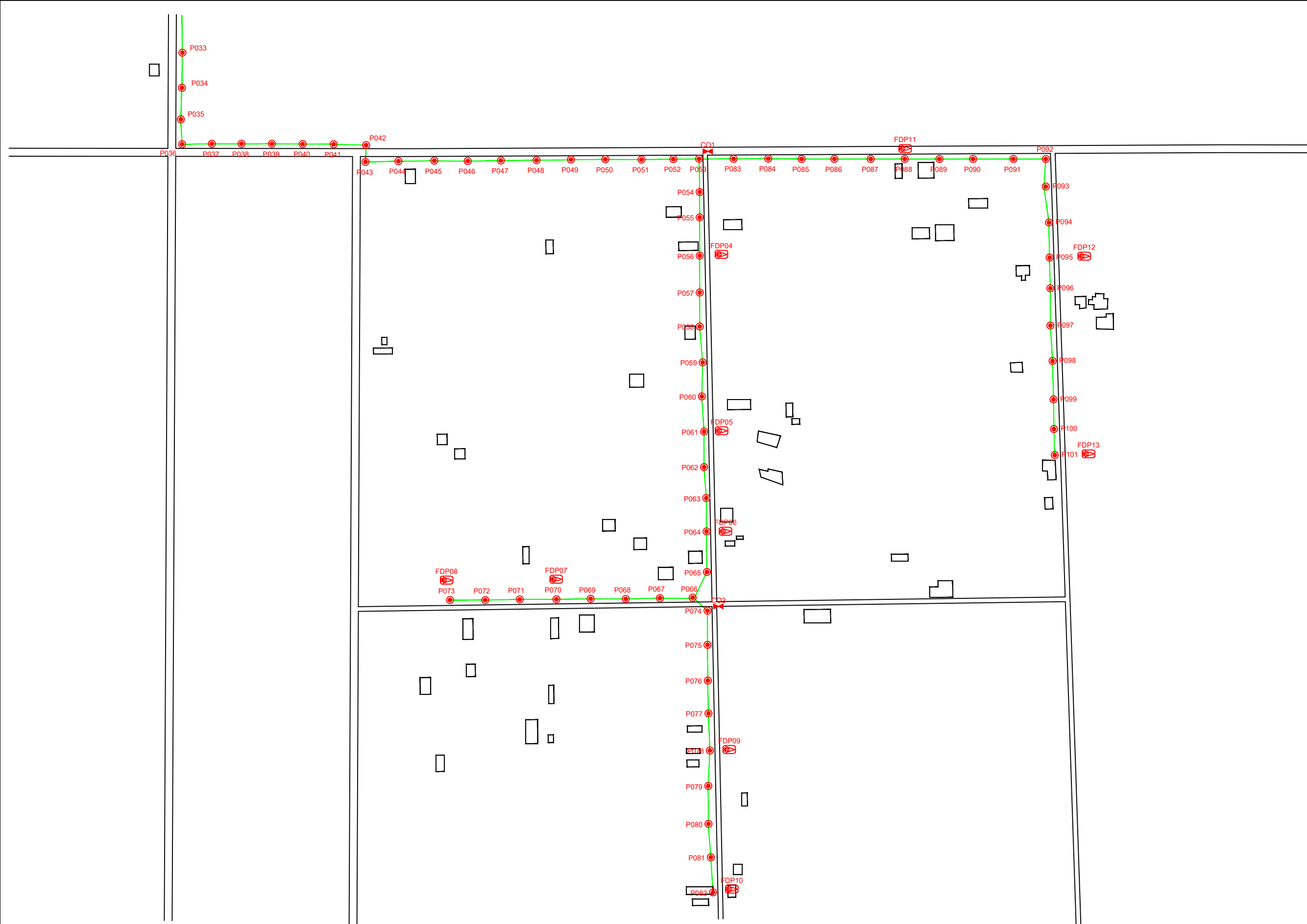
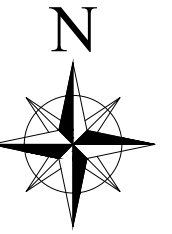
DRAWING TITLE

TP DRAWING POP 2 AT SEKOLAH JENIS KEBANGSAAN (TAMIL) LADANG HUNTLY

PROJECT PHASE

PROJECT PHASE 2

DESIGN BY	NABIL	DATE	05/06/2025
DRAWN BY	NABIL	SCALE	NOT TO SCALE
CHECKED BY	AZHAN HARIS	JOB NUMBER	ABD1078
DRAWING NUMBER		ABD1078	
THIS PRINT AND ITS COPYRIGHT ARE THE PROPERTY OF KNZ ENGINEERING SDN. BHD.		1/2	
		A3	



LEGEND

	12C FOC		Installed 1:4 splitter in FDC		INSTALLED POLE (9M)		NEW MANHOLE		TS / TB TENSION SMALL / TENSION BIG		MH1
	24C FOC		FDP		INSTALLED RISER		EXISTING MANHOLE		CO1		TKS-1
	48C FOC		CLOSURE		SUSPENSION BIG		EXISTING ALLO POLE		FDP1		P001
	90C FOC		NEW MANHOLE (PT)		SUSPENSION SMALL		LOOP		FDC		SEE A.A TO SHEET
	144C FOC		INSTALLED POLE		FDC		FDP BOUNDARY		FDC		SEE SHEET XXX

KEY PLAN

PROJECT OWNER

PROJECT OWNER

PRIVASAT

MAIN CONTRACTOR

PRIVASAT

SUB-CONTRACTOR

KNZ ENGINEERING SDN BHD
 NO. 60 & 60A, Jalan Kiebang Indah 1, Medan Kiebang Indah, 30100 Ipoh, Perak
 No Tel: 019-3695071
 Email: admin@knzengineering.com.my
 Website: www.knzengineering.com.my

PROJECT TITLE

SEKOLAH JENIS KEBANGSAAN (TAMIL) LADANG HUNTLY

DRAWING TITLE

TP DRAWING POP 2 AT SEKOLAH JENIS KEBANGSAAN (TAMIL) LADANG HUNTLY

PROJECT PHASE

PROJECT PHASE 2

DESIGN BY	NABIL	DATE	05/06/2025
DRAWN BY	NABIL	SCALE	NOT TO SCALE
CHECKED BY	AZHAN HARIS	JOB NUMBER	ABD1078
DRAWING NUMBER		ABD1078	
THIS PRINT AND ITS COPYRIGHT ARE THE PROPERTY OF KNZ ENGINEERING SDN. BHD.		2/2	
		A3	