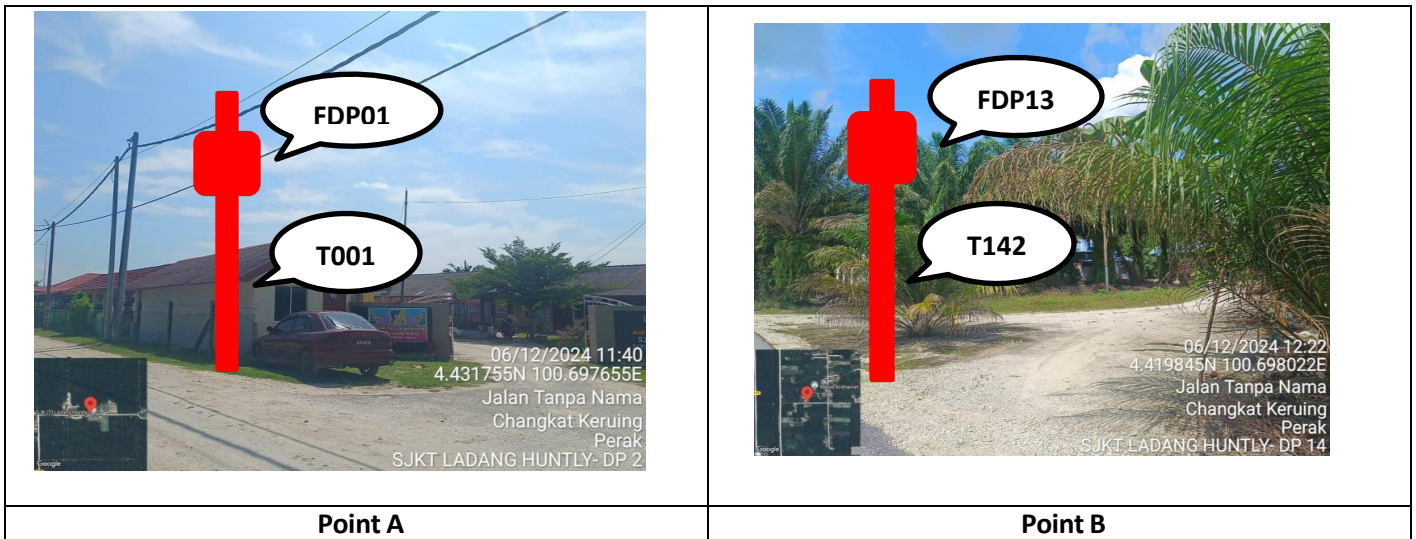


TECHNICAL PROPOSAL

POP2 ABD1078 SEKOLAH JENIS KEBANGSAAN TAMIL LADANG HUNTLY (D-SIDE)

Company Name : KNZ ENGINEERING SDN BHD
Company Address : NO 60 & 60 A JALAN KLEBANG INDAH 1 MEDAN KLEBANG INDAH 30010 IPOH PERAK
Prepared By : FARHAH AFIQAH BINTI AMDON
Date : 24/12/2024



Starting Point

Site / Boundary Name : Pantai Remis
Address : SJK (T) Ladang Huntly, 34900 Pantai Remis, Perak
District : Manjung
Postcode : 34900
State : Perak
GPS Coordinate : 4.43172720299999, 100.6977595
LRD : A

End Point

Site / Boundary Name : Pantai Remis
Address : Kampung 40 Rantai, Changkat Keruing, 34900 Pantai Remis, Perak
District : Manjung
Postcode : 34900
State : Perak
GPS Coordinate : 4.419879047, 100.6980106
LRD : B



PROJEK PENYEDIAAN DAN PENYELENGGARAAN POINT OF PRESENCE (POP) FASA 2: HAB INFRASTRUKTUR GENTIAN OPTIK BERHAMPIRAN DENGAN SEKOLAH, KAWASAN PERINDUSTRIAN, PREMIS KERAJAAN DAN KOMUNITI SEKITARNYA OLEH KEMENTERIAN KOMUNIKASI MALAYSIA – ZON UTARA (KKMM.400-11/17/132(1))



1.0 WORK SUMMARY

NO	PROPOSED DISTANCE AND METHOD	UNIT	QUANTITY
1	Horizontal Directional Drilling (HDD)	m	120
2	Carriage Way Open Trench (CW)	m	0
3	Grass Verge Open Trenching (GV)	m	12
4	Micro Trenching (MT)	m	0
Total			132

NO	OTHER INFORMATION	UNIT	QUANTITY
1	Installation of Short Span ADSS Fibre Cables	m	6,250
2	Install New Pole	ea	142
3	Install New JRC7 Manhole	ea	4
4	Install GI Riser 100mm	ea	4
5	Install Fiber Distribution Point	ea	13
6	Install Closure	ea	4
7	Estimated Time Required for Completion	days	30

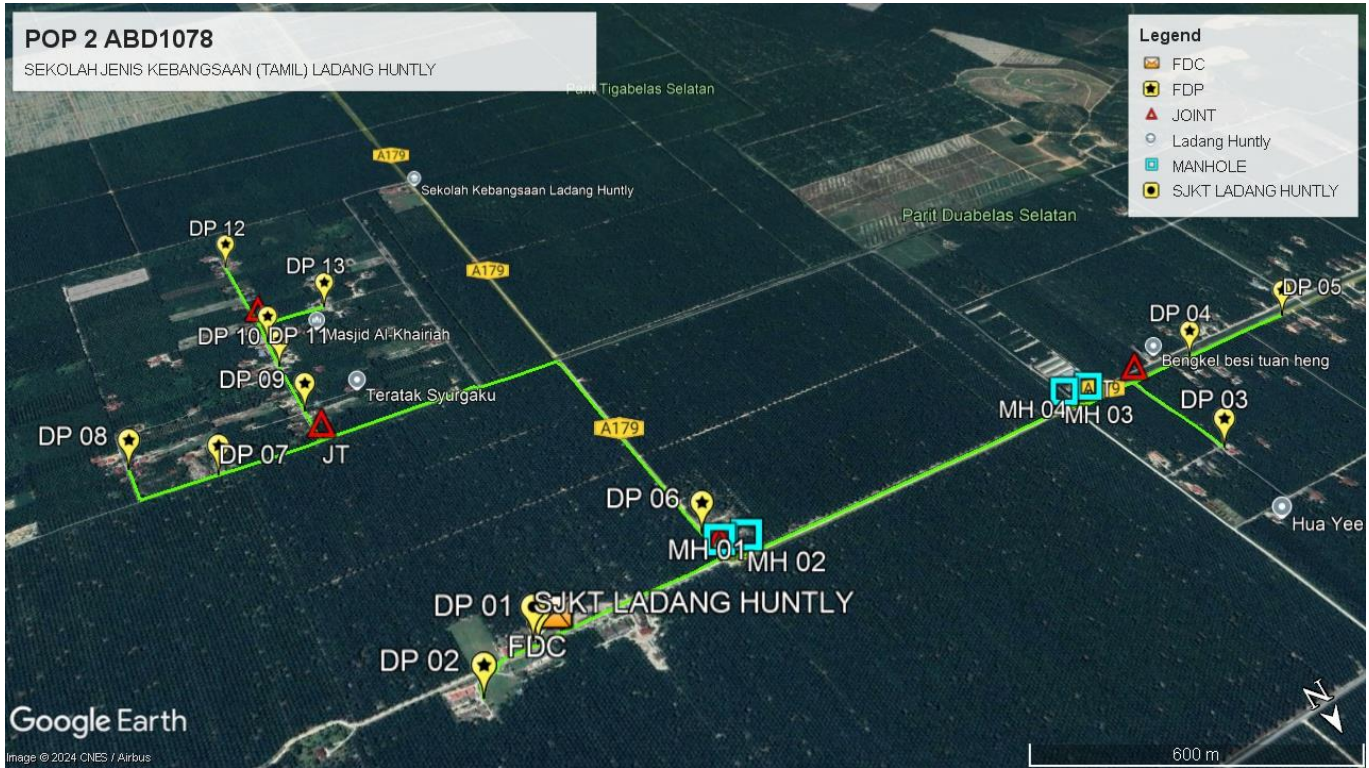
2.0 LOCAL AUTHORITY SUMMARY

Daerah Manjung

Bil	Items	Owner	Quantity	Distance
1	HDD	JKR	2	120m
		Majlis	-	-
		Estate / Private Land	-	-
2	New Pole	JKR	63	2,444m
		Majlis	63	2,450m
		Estate / Private Land	16	650m
3	Existing TNB Pole	JKR	-	-
		Majlis	-	-
		Estate / Private Land	-	-
Total				5,664m

Site Plan – KMZ (Overview site area)

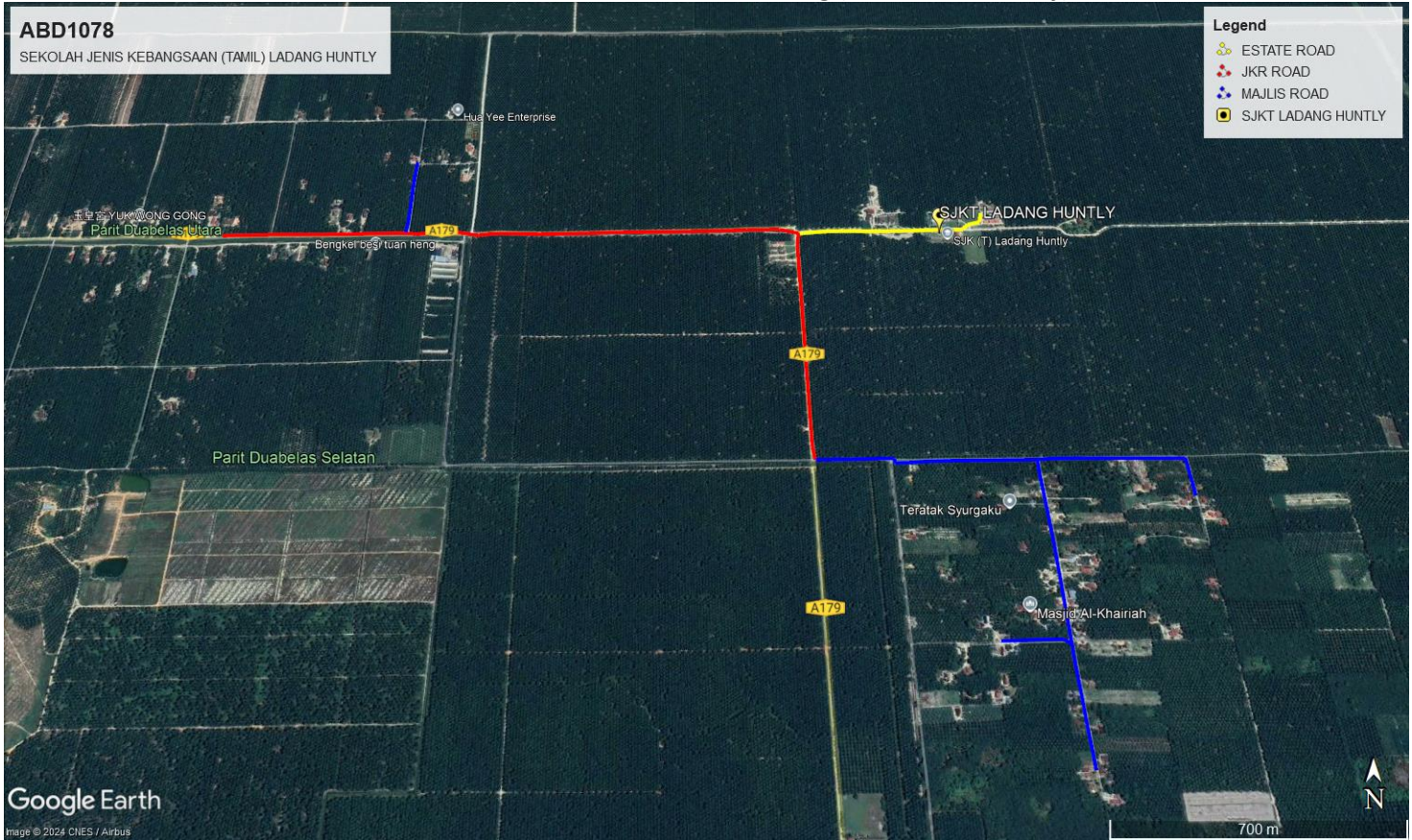
Proposed FDP and Closure



Proposed New Pole

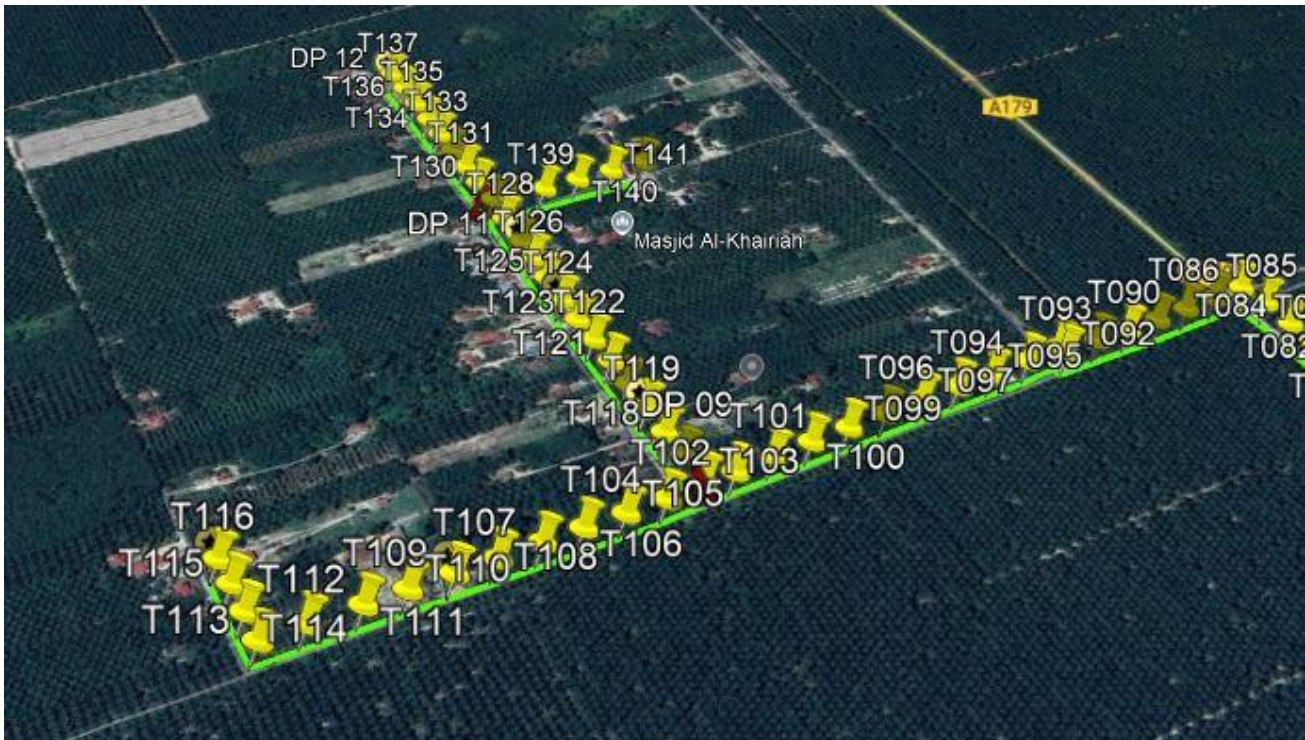
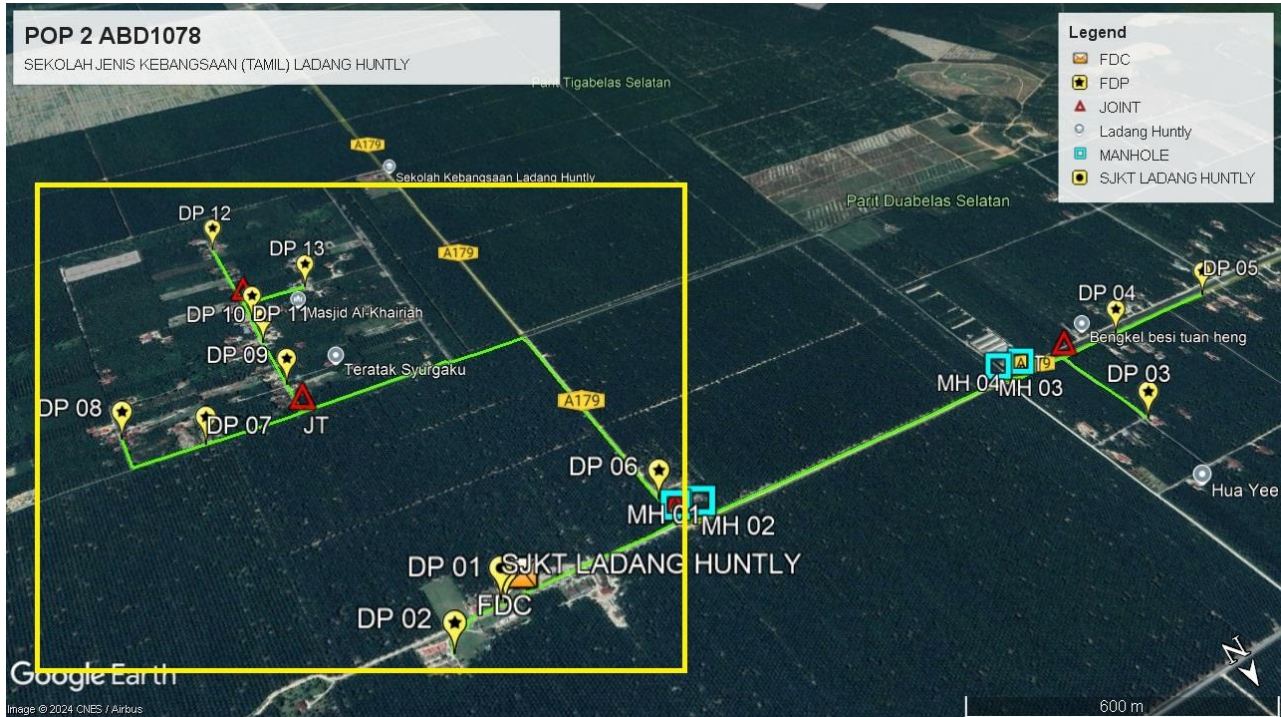


Site Plan – KMZ Routing (All Local Authority)



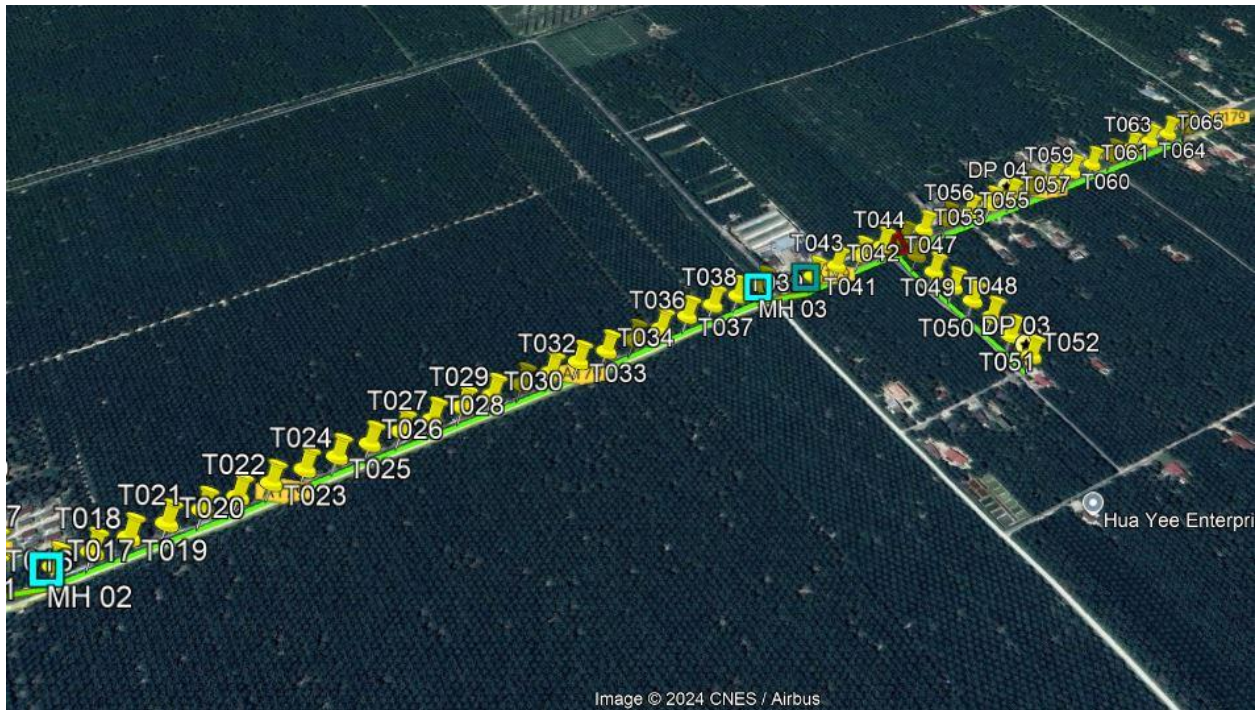
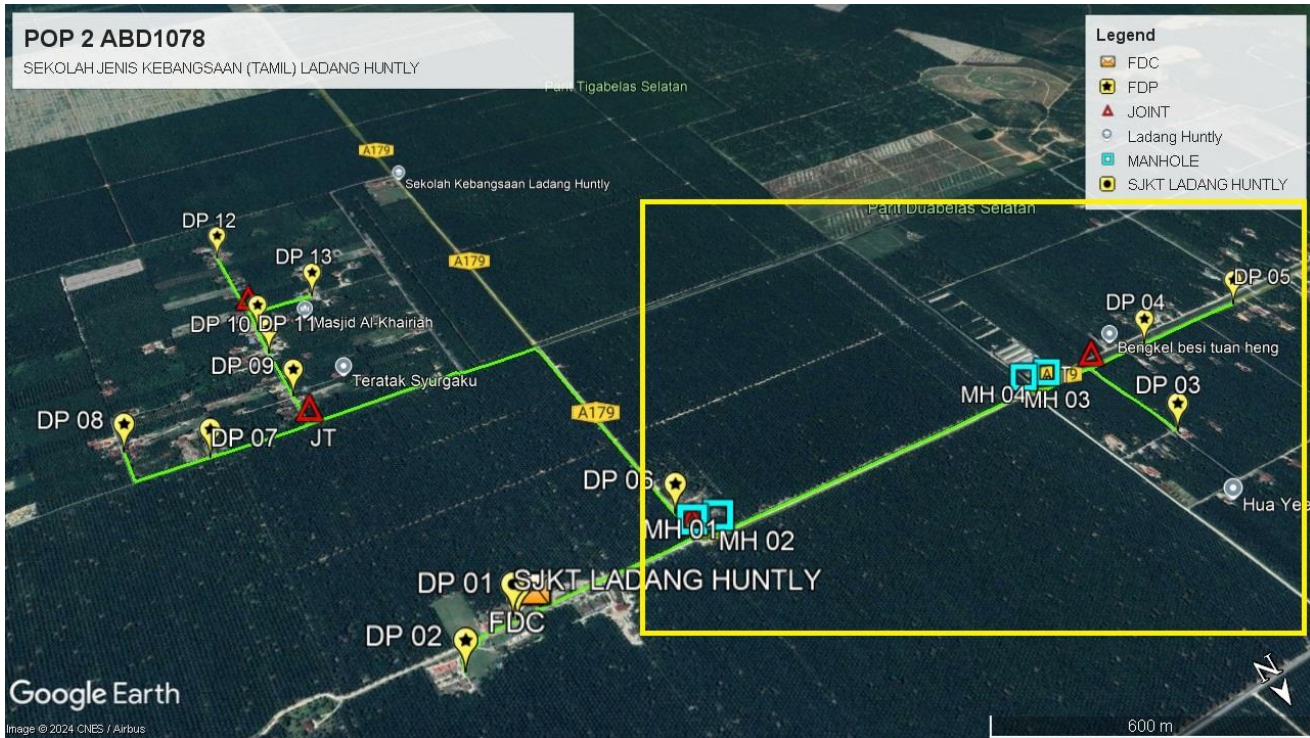
JKR Road – Red Colour
Majlis Road – Blue Colour
Estate Road – Yellow Colour

Route 1



Route 1.1

Route 2



Route 2.1

3.0 PROPOSED NEW POLE

Proposed New Pole Coordinate					
No.	Pole Number	Distance (m)	Latitude	Longitude	Local Authority
1	T001	40	4.431727	100.6977595	United Plantation Berhad
2	T002	40	4.43172619699998	100.6981038	United Plantation Berhad
3	T003	40	4.43172183799999	100.6984746	United Plantation Berhad
4	T004	40	4.431895008	100.6986161	United Plantation Berhad
5	T005	40	4.43198955599999	100.6989611	United Plantation Berhad
6	T006	40	4.43231578000001	100.6990362	United Plantation Berhad
7	T007	40	4.43171010399997	100.697151	United Plantation Berhad
8	T008	40	4.43170574499997	100.6967996	United Plantation Berhad
9	T009	40	4.43168998699999	100.6964274	United Plantation Berhad
10	T010	40	4.431677079	100.6960777	United Plantation Berhad
11	T011	40	4.43168177300003	100.6957143	United Plantation Berhad
12	T012	40	4.43168763999999	100.6953525	United Plantation Berhad
13	T013	40	4.431688646	100.6949807	United Plantation Berhad
14	T104	40	4.43169132800002	100.6946287	United Plantation Berhad
15	T015	40	4.43165696200001	100.6942763	United Plantation Berhad
16	T016	40	4.43161890799998	100.6939393	United Plantation Berhad
17	T017	40	4.431780009	100.6933939	JKR Daerah Manjung
18	T018	40	4.43178134999999	100.6930328	JKR Daerah Manjung
19	T019	40	4.43177497900002	100.692676	JKR Daerah Manjung
20	T020	40	4.43176894400001	100.6923042	JKR Daerah Manjung
21	T021	40	4.43176290999999	100.6919438	JKR Daerah Manjung
22	T022	40	4.43175452800001	100.6915817	JKR Daerah Manjung
23	T023	40	4.43174648099999	100.691225	JKR Daerah Manjung
24	T024	40	4.43174346399998	100.6908625	JKR Daerah Manjung
25	T025	40	4.431741787	100.6905085	JKR Daerah Manjung
26	T026	40	4.43173927299999	100.6901423	JKR Daerah Manjung
27	T027	40	4.43173524900002	100.6897836	JKR Daerah Manjung

4.0 PROPOSED NEW POLE

Proposed New Pole Coordinate					
No.	Pole Number	Distance (m)	Latitude	Longitude	Local Authority
28	T028	40	4.431733573	100.6894215	JKR Daerah Manjung
29	T029	40	4.43172820799999	100.6890638	JKR Daerah Manjung
30	T030	40	4.431722509	100.6887027	JKR Daerah Manjung
31	T031	40	4.43171982699998	100.6883449	JKR Daerah Manjung
32	T032	40	4.43171177999999	100.6879795	JKR Daerah Manjung
33	T033	40	4.43170909800001	100.6876254	JKR Daerah Manjung
34	T034	40	4.431705074	100.687261	JKR Daerah Manjung
35	T035	40	4.43169468100002	100.6868999	JKR Daerah Manjung
36	T036	40	4.43169568700002	100.6865328	JKR Daerah Manjung
37	T037	40	4.431697363	100.6861737	JKR Daerah Manjung
38	T038	40	4.43168797499998	100.6858153	JKR Daerah Manjung
39	T039	40	4.43168495800001	100.6854595	JKR Daerah Manjung
40	T040	40	4.43165092699999	100.6850995	JKR Daerah Manjung
41	T041	40	4.43177766200001	100.6844175	JKR Daerah Manjung
42	T042	40	4.43175519799999	100.6840571	JKR Daerah Manjung
43	T043	40	4.43174949799999	100.6836936	JKR Daerah Manjung
44	T044	40	4.43174044600001	100.6833389	JKR Daerah Manjung
45	T045	40	4.431771291	100.6830419	JKR Daerah Manjung
46	T046	40	4.43211629100001	100.6830838	Majlis Perbandaran Manjung
47	T047	40	4.43248324999999	100.6830922	Majlis Perbandaran Manjung
48	T048	40	4.43284434300002	100.6830798	Majlis Perbandaran Manjung
49	T049	40	4.43320526700002	100.6830751	Majlis Perbandaran Manjung
50	T050	40	4.43356636	100.6830791	Majlis Perbandaran Manjung
51	T051	40	4.43392057899997	100.6830821	Majlis Perbandaran Manjung
52	T052	40	4.434287036	100.6830801	Majlis Perbandaran Manjung
53	T053	40	4.431738937	100.6826835	JKR Daerah Manjung
54	T054	40	4.43173960799998	100.6823207	JKR Daerah Manjung

4.0 PROPOSED NEW POLE

Proposed New Pole Coordinate					
No.	Pole Number	Distance (m)	Latitude	Longitude	Local Authority
55	T055	40	4.43174413400003	100.6819509	JKR Daerah Manjung
56	T056	40	4.43174212199998	100.6815955	JKR Daerah Manjung
57	T057	40	4.43173759600001	100.6812337	JKR Daerah Manjung
58	T058	40	4.43172552600001	100.6808689	JKR Daerah Manjung
59	T059	40	4.43172284399999	100.6805035	JKR Daerah Manjung
60	T060	40	4.43172049699999	100.6801471	JKR Daerah Manjung
61	T061	40	4.43171781500001	100.6797887	JKR Daerah Manjung
62	T062	40	4.431714797	100.6794252	JKR Daerah Manjung
63	T063	40	4.43170809200001	100.6790648	JKR Daerah Manjung
64	T064	40	4.43170809200001	100.6787051	JKR Daerah Manjung
65	T065	40	4.43169903899998	100.678348	JKR Daerah Manjung
66	T066	40	4.43170641500003	100.6779856	JKR Daerah Manjung
67	T067	40	4.43126888	100.6938834	JKR Daerah Manjung
68	T068	40	4.430906111	100.6938877	JKR Daerah Manjung
69	T069	40	4.43053009900002	100.6938961	JKR Daerah Manjung
70	T070	40	4.43017973600001	100.6938988	JKR Daerah Manjung
71	T071	40	4.429822164	100.6939108	JKR Daerah Manjung
72	T072	40	4.42947012400001	100.6939145	JKR Daerah Manjung
73	T073	40	4.42910349900001	100.6939199	JKR Daerah Manjung
74	T074	40	4.42874743600001	100.6939256	JKR Daerah Manjung
75	T075	40	4.42838567300001	100.69393	JKR Daerah Manjung
76	T076	40	4.42802407799999	100.69393	JKR Daerah Manjung
77	T077	40	4.427662985	100.693935	JKR Daerah Manjung
78	T078	40	4.42730340199999	100.6939414	JKR Daerah Manjung
79	T079	40	4.42694197399998	100.6939461	JKR Daerah Manjung
80	T080	40	4.42659161100001	100.6939481	JKR Daerah Manjung
81	T081	40	4.42624342600002	100.6939554	JKR Daerah Manjung

4.0 PROPOSED NEW POLE

Proposed New Pole Coordinate					
No.	Pole Number	Distance (m)	Latitude	Longitude	Local Authority
82	T082	40	4.425924411	100.6939568	JKR Daerah Manjung
83	T083	40	4.42558846399998	100.6939618	JKR Daerah Manjung
84	T084	40	4.42524162099998	100.6939655	JKR Daerah Manjung
85	T085	40	4.42487851699999	100.6939675	JKR Daerah Manjung
86	T086	40	4.42457660100003	100.6940212	JKR Daerah Manjung
87	T087	40	4.424579618	100.694336	Majlis Perbandaran Manjung
88	T088	40	4.424581965	100.6946558	Majlis Perbandaran Manjung
89	T089	40	4.42458934200001	100.694977	Majlis Perbandaran Manjung
90	T090	40	4.42458733	100.6953026	Majlis Perbandaran Manjung
91	T091	40	4.424581965	100.6956328	Majlis Perbandaran Manjung
92	T092	40	4.42457693599998	100.6959601	Majlis Perbandaran Manjung
93	T093	40	4.42447233	100.6959704	Majlis Perbandaran Manjung
94	T094	40	4.42449680499998	100.6963185	Majlis Perbandaran Manjung
95	T095	40	4.424505187	100.6966913	Majlis Perbandaran Manjung
96	T096	40	4.42451625099999	100.6970504	Majlis Perbandaran Manjung
97	T097	40	4.42451809499999	100.6974115	Majlis Perbandaran Manjung
98	T098	40	4.42452580700003	100.6977776	Majlis Perbandaran Manjung
99	T099	40	4.42452949500001	100.698138	Majlis Perbandaran Manjung
100	T100	40	4.42453184200001	100.6984978	Majlis Perbandaran Manjung
101	T101	40	4.424535194	100.6988552	Majlis Perbandaran Manjung
102	T102	40	4.424545253	100.6992106	Majlis Perbandaran Manjung
103	T103	40	4.42450585800001	100.6994851	Majlis Perbandaran Manjung
104	T104	40	4.42456838699999	100.6998402	Majlis Perbandaran Manjung
105	T105	40	4.42456771600002	100.7001986	Majlis Perbandaran Manjung
106	T106	40	4.42456402799999	100.7005614	Majlis Perbandaran Manjung
107	T107	40	4.42456134600001	100.7009114	Majlis Perbandaran Manjung
108	T108	40	4.42456000499998	100.7012852	Majlis Perbandaran Manjung

4.0 PROPOSED NEW POLE

Proposed New Pole Coordinate					
No.	Pole Number	Distance (m)	Latitude	Longitude	Local Authority
109	T109	40	4.42455430499999	100.7016363	Majlis Perbandaran Manjung
110	T110	40	4.42454827000001	100.7020051	Majlis Perbandaran Manjung
111	T111	40	4.42454357599998	100.7023548	Majlis Perbandaran Manjung
112	T112	40	4.42453485900002	100.702789	Majlis Perbandaran Manjung
113	T113	40	4.424526477	100.7031578	Majlis Perbandaran Manjung
114	T114	40	4.42417024599998	100.7031645	Majlis Perbandaran Manjung
115	T115	40	4.42380311900002	100.7031735	Majlis Perbandaran Manjung
116	T116	40	4.42346482500001	100.7031953	Majlis Perbandaran Manjung
117	T117	40	4.424134707	100.6994989	Majlis Perbandaran Manjung
118	T118	40	4.42378652300001	100.6995147	Majlis Perbandaran Manjung
119	T119	40	4.42342341899998	100.6995261	Majlis Perbandaran Manjung
120	T120	40	4.42306601399999	100.6995425	Majlis Perbandaran Manjung
121	T121	40	4.422701066	100.6995485	Majlis Perbandaran Manjung
122	T122	40	4.42232958	100.6995646	Majlis Perbandaran Manjung
123	T123	40	4.42197267900001	100.6995703	Majlis Perbandaran Manjung
124	T124	40	4.42161829200002	100.6995817	Majlis Perbandaran Manjung
125	T125	40	4.42124764400001	100.6995804	Majlis Perbandaran Manjung
126	T126	40	4.42088286400001	100.6995787	Majlis Perbandaran Manjung
127	T127	40	4.42059737600001	100.6995767	Majlis Perbandaran Manjung
128	T128	40	4.42015112400001	100.6995881	Majlis Perbandaran Manjung
129	T129	40	4.41978114700002	100.6995706	Majlis Perbandaran Manjung
130	T130	40	4.41942474800002	100.6995955	Majlis Perbandaran Manjung
131	T131	40	4.41906717600002	100.6996072	Majlis Perbandaran Manjung
132	T132	40	4.41871815399999	100.6996166	Majlis Perbandaran Manjung
133	T133	40	4.418352032	100.6996243	Majlis Perbandaran Manjung
134	T134	40	4.41798943100001	100.6996273	Majlis Perbandaran Manjung
135	T135	40	4.417619286	100.6996384	Majlis Perbandaran Manjung



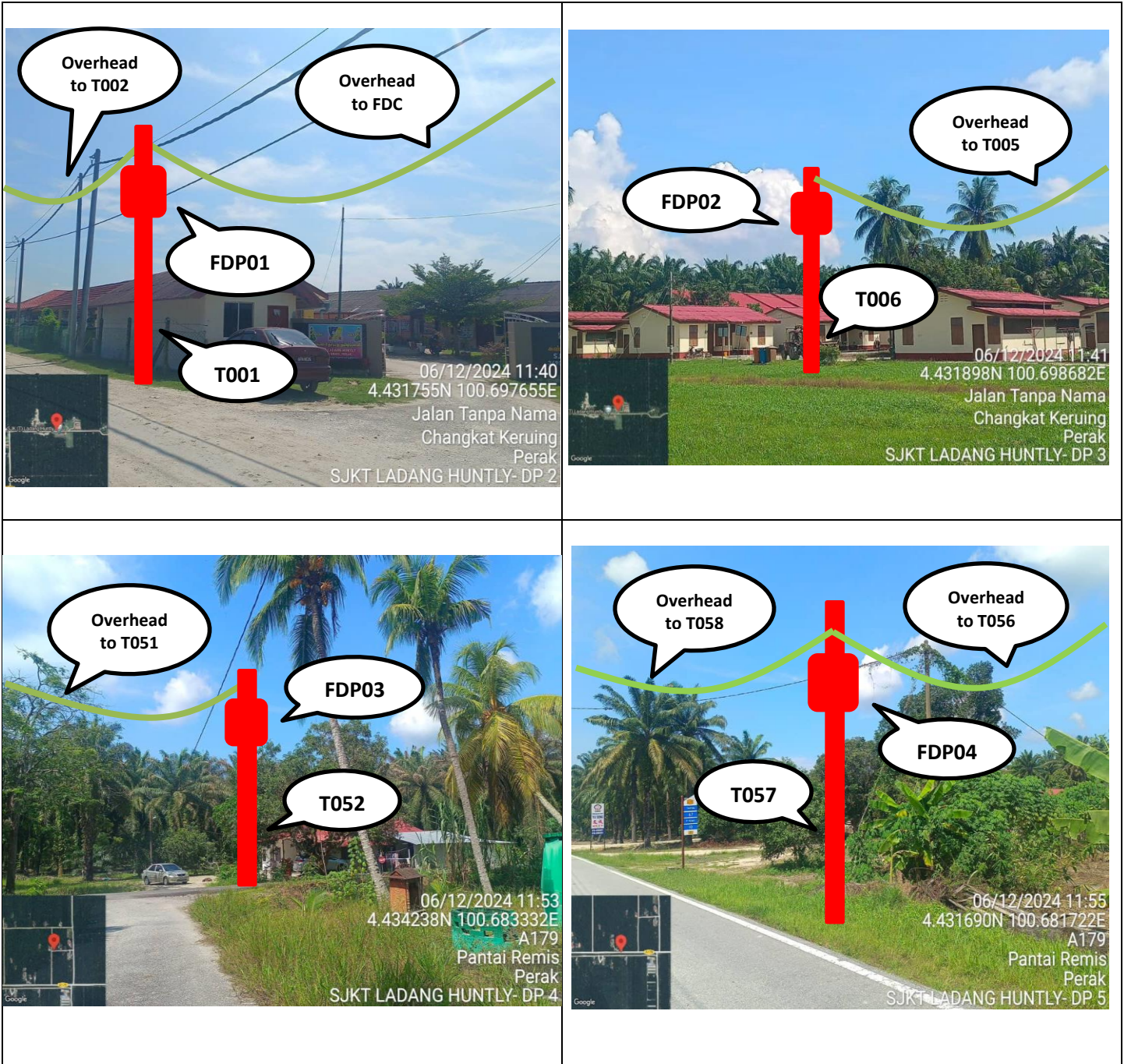
PROJEK PENYEDIAAN DAN PENYELENGGARAAN POINT OF PRESENCE (POP) FASA 2: HAB INFRASTRUKTUR GENTIAN OPTIK BERHAMPIRAN DENGAN SEKOLAH, KAWASAN PERINDUSTRIAN, PREMIS KERAJAAN DAN KOMUNITI SEKITARNYA OLEH KEMENTERIAN KOMUNIKASI MALAYSIA – ZON UTARA (KKMM.400-11/17/132(1))



4.0 PROPOSED NEW POLE

Proposed New Pole Coordinate					
No.	Pole Number	Distance (m)	Latitude	Longitude	Local Authority
136	T136	40	4.41727328099999	100.6996471	Majlis Perbandaran Manjung
137	T137	40	4.41691570899998	100.6996726	Majlis Perbandaran Manjung
138	T138	40	4.41988508200002	100.6994278	Majlis Perbandaran Manjung
139	T139	40	4.41988407599998	100.6990694	Majlis Perbandaran Manjung
140	T140	40	4.419883406	100.6987154	Majlis Perbandaran Manjung
141	T141	40	4.41988105900001	100.6983616	Majlis Perbandaran Manjung
142	T142	40	4.419879	100.6980106	Majlis Perbandaran Manjung

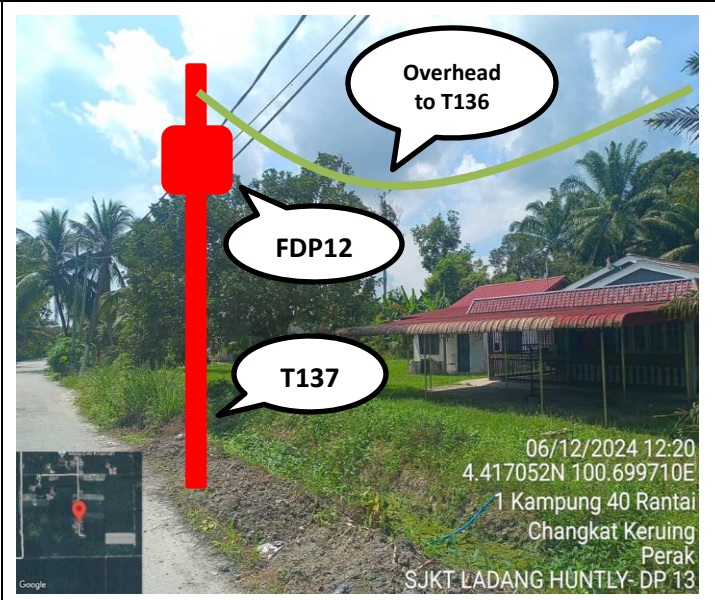
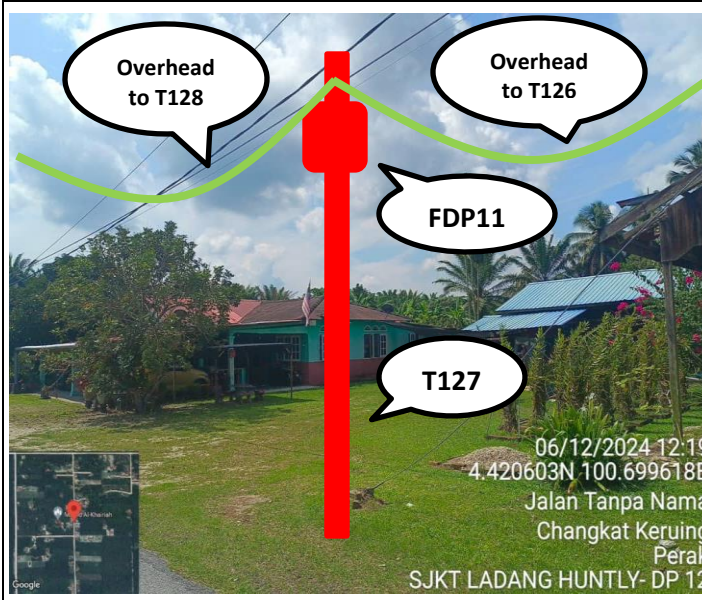
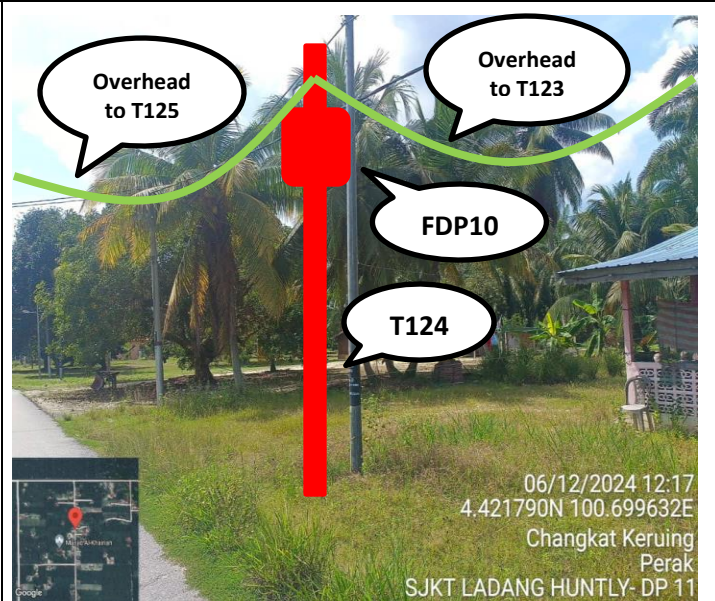
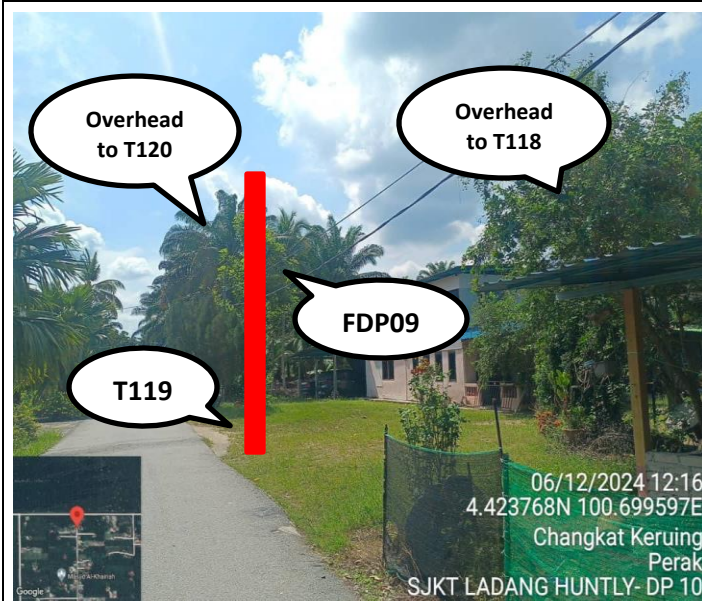
5.0 SITE PHOTOS - PROPOSED NEW POLE



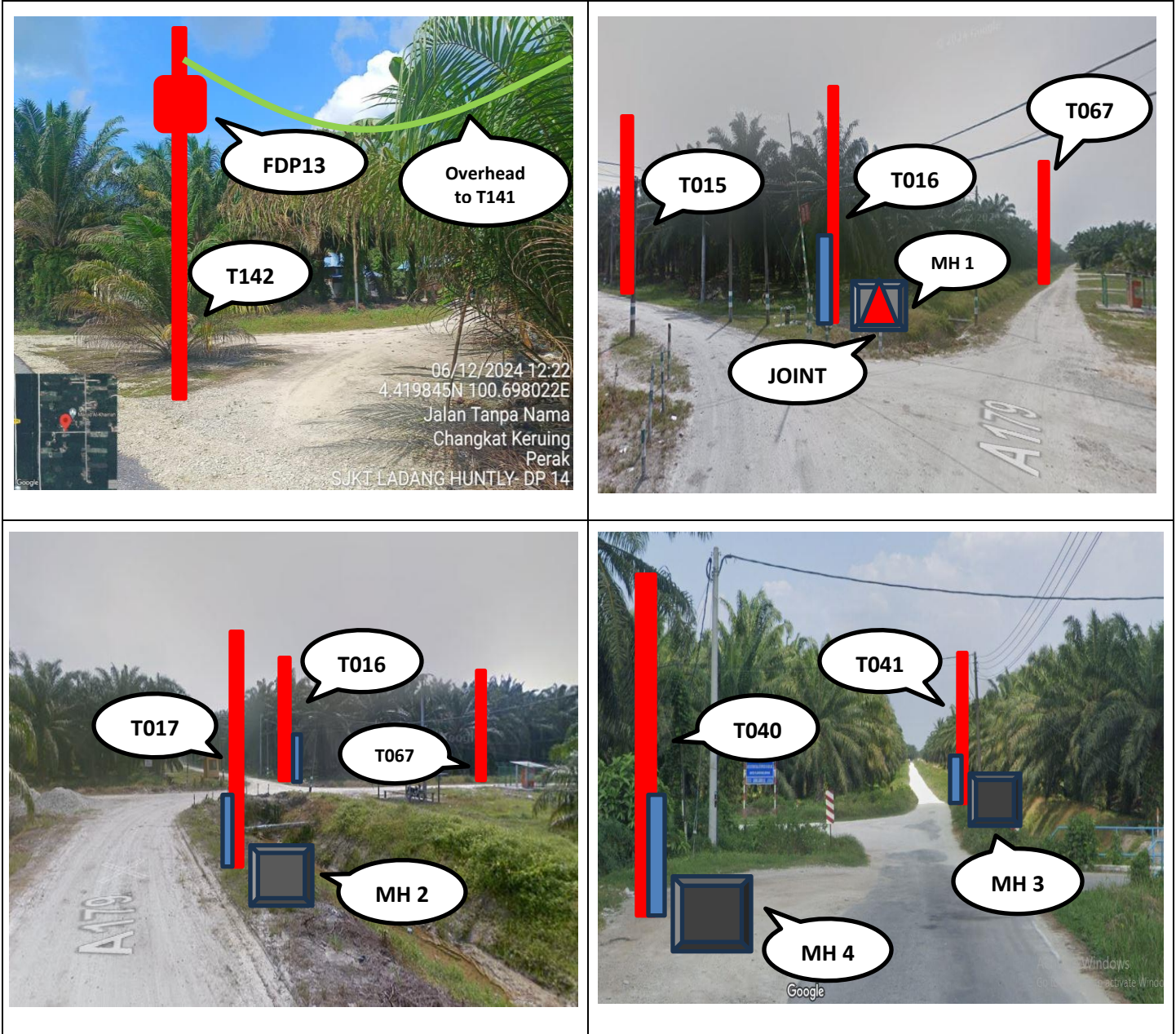
5.0 SITE PHOTOS - PROPOSED NEW POLE



5.0 SITE PHOTOS - PROPOSED NEW POLE



5.0 SITE PHOTOS - PROPOSED NEW POLE





PROJEK PENYEDIAAN DAN PENYELENGGARAAN POINT OF PRESENCE (POP) FASA 2: HAB INFRASTRUKTUR GENTIAN OPTIK BERHAMPIRAN DENGAN SEKOLAH, KAWASAN PERINDUSTRIAN, PREMIS KERAJAAN DAN KOMUNITI SEKITARNYA OLEH KEMENTERIAN KOMUNIKASI MALAYSIA – ZON UTARA (KKMM.400-11/17/132(1))



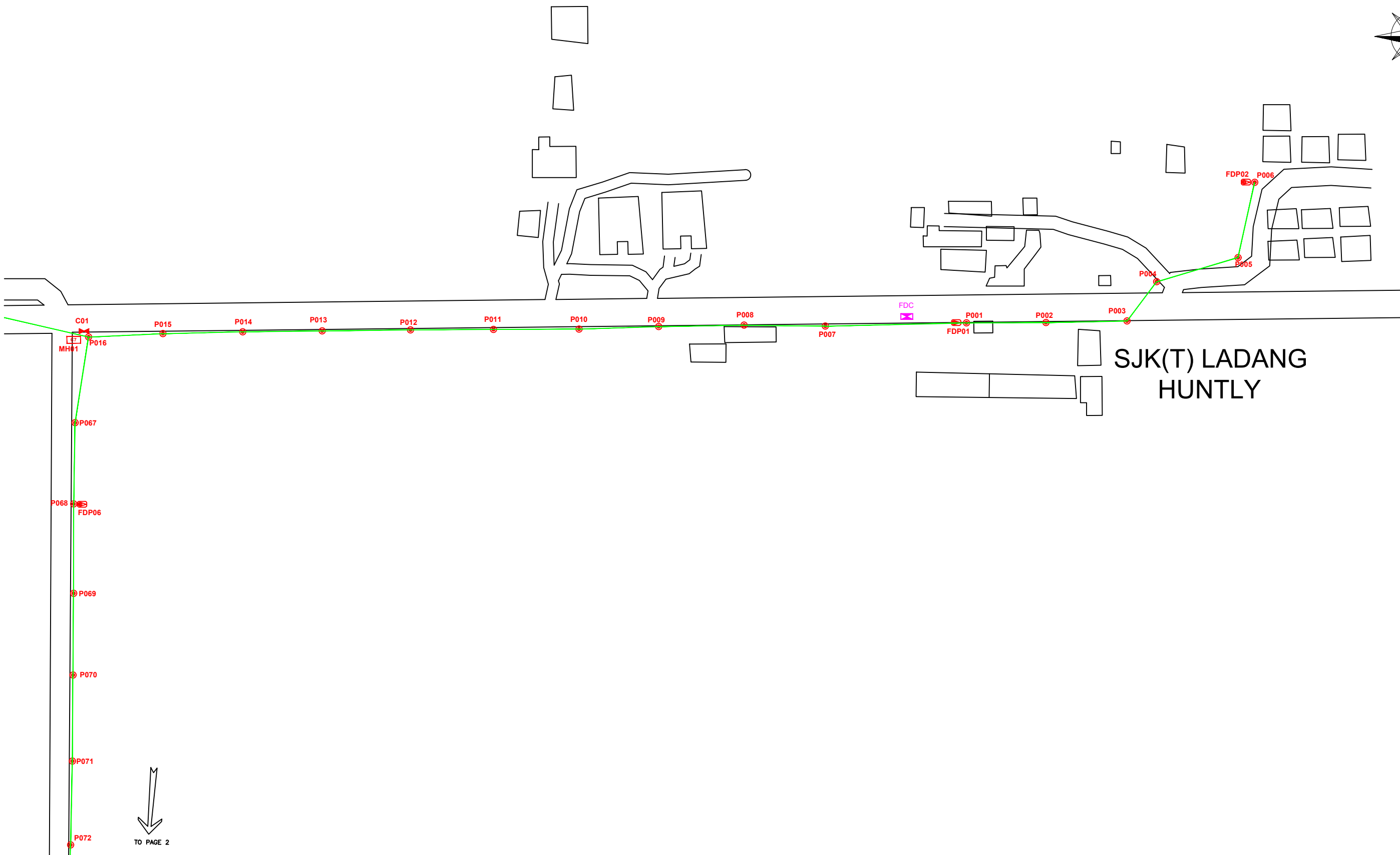
6.0 3rd PARTIES DEPENDENCIES

NO	LOCAL COUNCIL / AUTHORITY	REMARK
1	Majlis Perbandaran Manjung	2,564m
2	JKR Daerah Manjung	2,450m
3	United Plantation Berhad	650m



TO PAGE 4

TO PAGE 2



LEGEND

12C FOC	Installed 1:4 splitter in FDC	Installed Pole (9M)	New Manhole	Tension Small / Tension Big	MH1 MH NO.
24C FOC	FDP	Installed Riser	House Number	Existing Manhole	TKS-1 EXISTING TNB POLE NO.
48C FOC	Closure	Suspension Big	Existing Allo Pole	C01 CLOSURE NO.	P001 NEW POLE NO.
90C FOC	New Manhole (PT)	Suspension Small	Loop	FDP1 FDP NO.	SEE A.A TO THIS DRAWING
144C FOC	Installed Pole	FDC	FDP Boundary	FDC FDC NO.	SEE SHEET XXX

KEY PLAN

PROJECT OWNER

MAIN CONTRACTOR

SUB-CONTRACTOR

KNZ ENGINEERING SDN BHD
 NO. 60 & 60A, Jalan Kiebang Indah 1, Medan Kiebang Indah, 30100 Ipoh, Perak
 No Tel: 019-3695071
 Email: admin@knzengineering.com.my
 Website: www.knzengineering.com.my

PROJECT TITLE

SEKOLAH JENIS KEBANGSAAN (TAMIL) LADANG HUNTLY

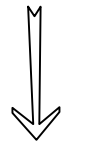
DRAWING TITLE

TP DRAWING POP 2 AT SEKOLAH JENIS KEBANGSAAN (TAMIL) LADANG HUNTLY

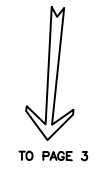
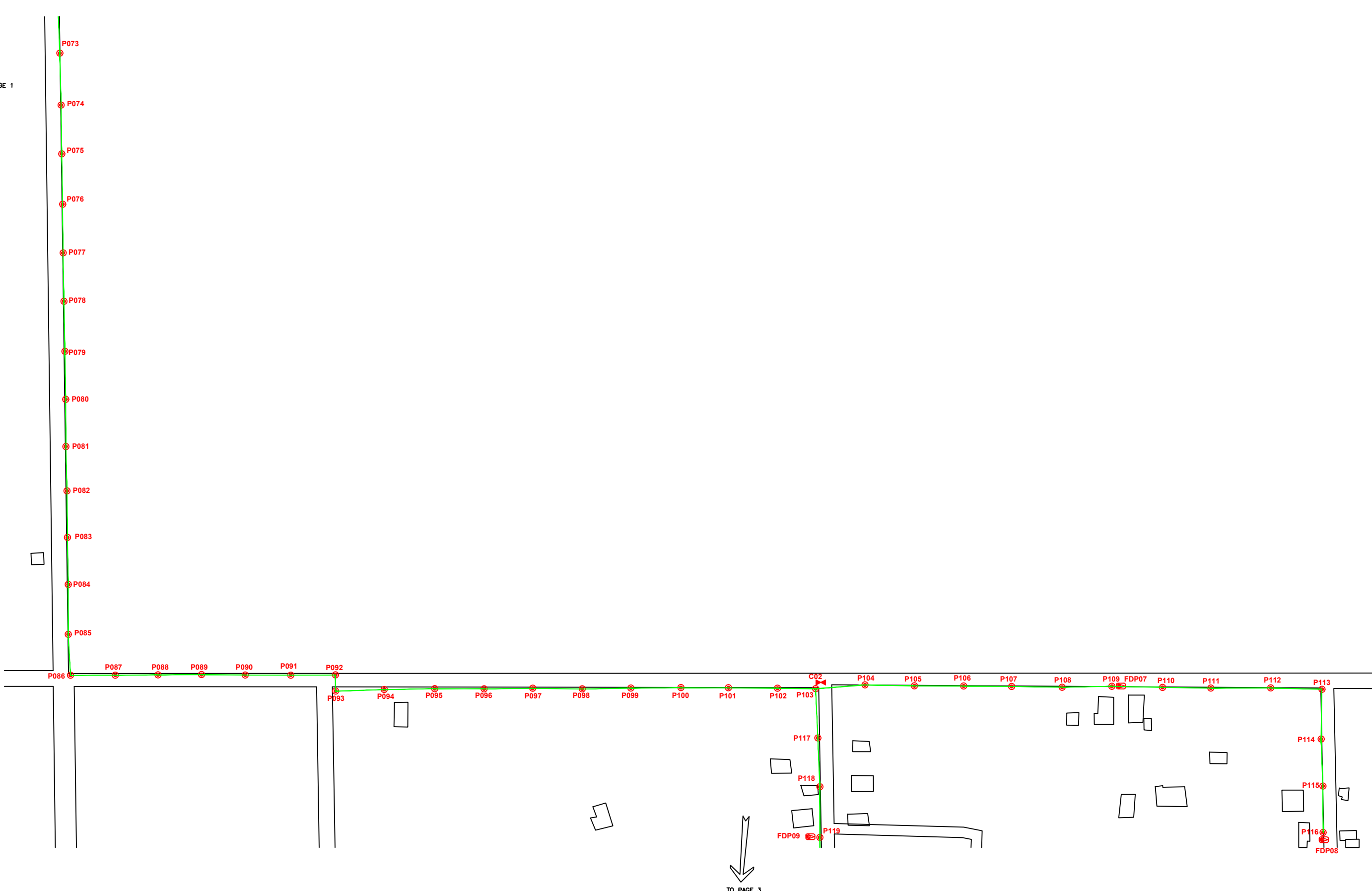
PROJECT PHASE

PROJECT PHASE 2

DESIGN BY	ZUL FAHMIE	DATE	20/12/2024
DRAWN BY	ZUL FAHMIE	SCALE	NOT TO SCALE
CHECKED BY	AZHAN HARIS	JOB NUMBER	ABD1078
DRAWING NUMBER		ABD1078	
THIS PRINT AND ITS COPYRIGHT ARE THE PROPERTY OF KNZ ENGINEERING SDN. BHD.		1/5	
		A3	



FROM PAGE 1



TO PAGE 3

LEGEND					
	12C FOC		INSTALLED POLE (9M)		NEW MANHOLE
	24C FOC		INSTALLED RISER		EXISTING MANHOLE
	48C FOC		SUSPENSION BIG		EXISTING ALLO POLE
	90C FOC		SUSPENSION SMALL		LOOP
	144C FOC		INSTALLED POLE		FDP BOUNDARY
	Installed 1:4 splitter in FDC		FDP		TENSION SMALL / TENSION BIG
	CLOSURE		NEW MANHOLE (PT)		CLOSURE NO.
	INSTALLED POLE		INSTALLED POLE		FDP NO.
					FDC NO.
					MH NO.
					EXISTING TNB POLE NO.
					NEW POLE NO.
					SEE SHEET XXX
					SEE SHEET XXX

KEY PLAN

PROJECT OWNER

MAIN CONTRACTOR

SUB-CONTRACTOR

KNZ ENGINEERING SDN BHD
 NO. 60 & 60A, Jalan Klebang Indah 1, Medan Klebang Indah, 30100 Ipoh, Perak
 No Tel: 019-3695071
 Email: admin@knzengineering.com.my
 Website: www.knzengineering.com.my

PROJECT TITLE

SEKOLAH JENIS KEBANGSAAN (TAMIL) LADANG HUNTLY

DRAWING TITLE

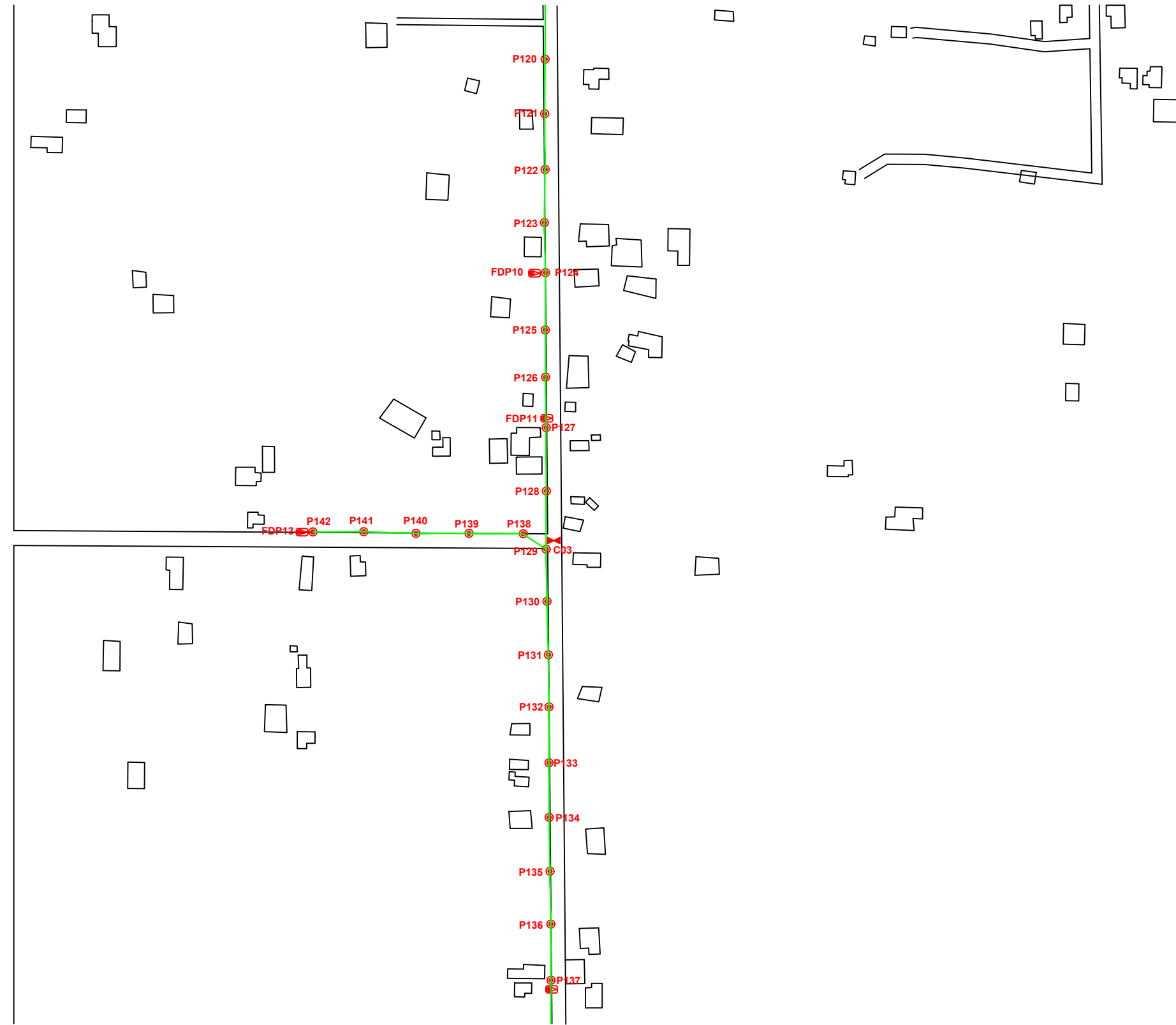
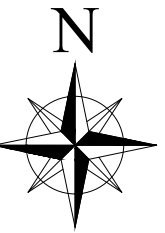
TP DRAWING POP 2 AT SEKOLAH JENIS KEBANGSAAN (TAMIL) LADANG HUNTLY

PROJECT PHASE

PROJECT PHASE 2

DESIGN BY	ZUL FAHMIE	DATE	20/12/2024
DRAWN BY	ZUL FAHMIE	SCALE	NOT TO SCALE
CHECKED BY	AZHAN HARIS	JOB NUMBER	ABD1078
DRAWING NUMBER		ABD1078	
THIS PRINT AND ITS COPYRIGHT ARE THE PROPERTY OF KNZ ENGINEERING SDN. BHD.		2/5	
		A3	

FROM PAGE 2



LEGEND

	12C FOC		Installed 1:4 splitter in FDC		INSTALLED POLE (9M)		NEW MANHOLE		TENSION SMALL / TENSION BIG		MH NO.
	24C FOC		FDP		INSTALLED RISER		HOUSE NUMBER		EXISTING MANHOLE		EXISTING TNB POLE NO.
	48C FOC		CLOSURE		SUSPENSION BIG		EXISTING ALLO POLE		CLOSURE NO.		NEW POLE NO.
	90C FOC		NEW MANHOLE (PT)		SUSPENSION SMALL		LOOP		FDP NO.		SEE A.A. TO THIS DRAWING
	144C FOC		INSTALLED POLE		FDC		FDP BOUNDARY		FDC NO.		SEE SHEET XXX

KEY PLAN

PROJECT OWNER

MAIN CONTRACTOR

SUB-CONTRACTOR

KNZ ENGINEERING SDN BHD
 NO. 60 & 60A, Jalan Klebang Indah 1, Medan Klebang Indah, 30100 Ipoh, Perak
 No Tel: 019-3695071
 Email: admin@knzengineering.com.my
 Website: www.knzengineering.com.my

PROJECT TITLE

SEKOLAH JENIS KEBANGSAAN (TAMIL) LADANG HUNTLY

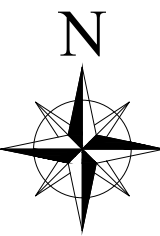
DRAWING TITLE

TP DRAWING POP 2 AT SEKOLAH JENIS KEBANGSAAN (TAMIL) LADANG HUNTLY

PROJECT PHASE

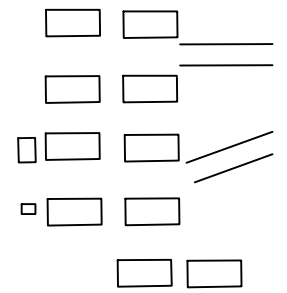
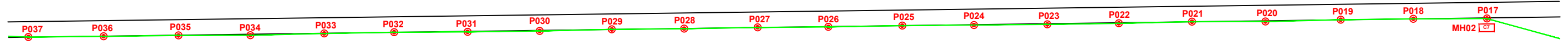
PROJECT PHASE 2

DESIGN BY	ZUL FAHMIE	DATE	20/12/2024
DRAWN BY	ZUL FAHMIE	SCALE	NOT TO SCALE
CHECKED BY	AZHAN HARIS	JOB NUMBER	ABD1078
DRAWING NUMBER		ABD1078	
THIS PRINT AND ITS COPYRIGHT ARE THE PROPERTY OF KNZ ENGINEERING SDN. BHD.		3/5	
		A3	



←
FROM PAGE 1

←
TO PAGE 5



LEGEND

	12C FOC		INSTALLED POLE (9M)		NEW MANHOLE		TENSION SMALL / TENSION BIG		MH NO.
	24C FOC		INSTALLED RISER		HOUSE NUMBER		EXISTING MANHOLE		EXISTING TNB POLE NO.
	48C FOC		CLOSURE		SUSPENSION BIG		EXISTING ALLO POLE		CLOSURE NO.
	90C FOC		NEW MANHOLE (PT)		SUSPENSION SMALL		LOOP		FDP NO.
	144C FOC		INSTALLED POLE		FDC		FDP BOUNDARY		FDC NO.
									NEW POLE NO.
									SEE SHEET XXX

KEY PLAN

PROJECT OWNER



MAIN CONTRACTOR




SUB-CONTRACTOR



KNZ ENGINEERING SDN BHD
NO. 60 & 60A, Jalan Kiebang Indah 1, Medan Kiebang Indah, 30100 Ipoh, Perak
No Tel: 019-3695071
Email: admin@knzengineering.com.my
Website: www.knzengineering.com.my

PROJECT TITLE

SEKOLAH JENIS KEBANGSAAN (TAMIL) LADANG HUNTLY

DRAWING TITLE

TP DRAWING POP 2 AT SEKOLAH JENIS KEBANGSAAN (TAMIL) LADANG HUNTLY

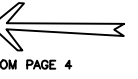
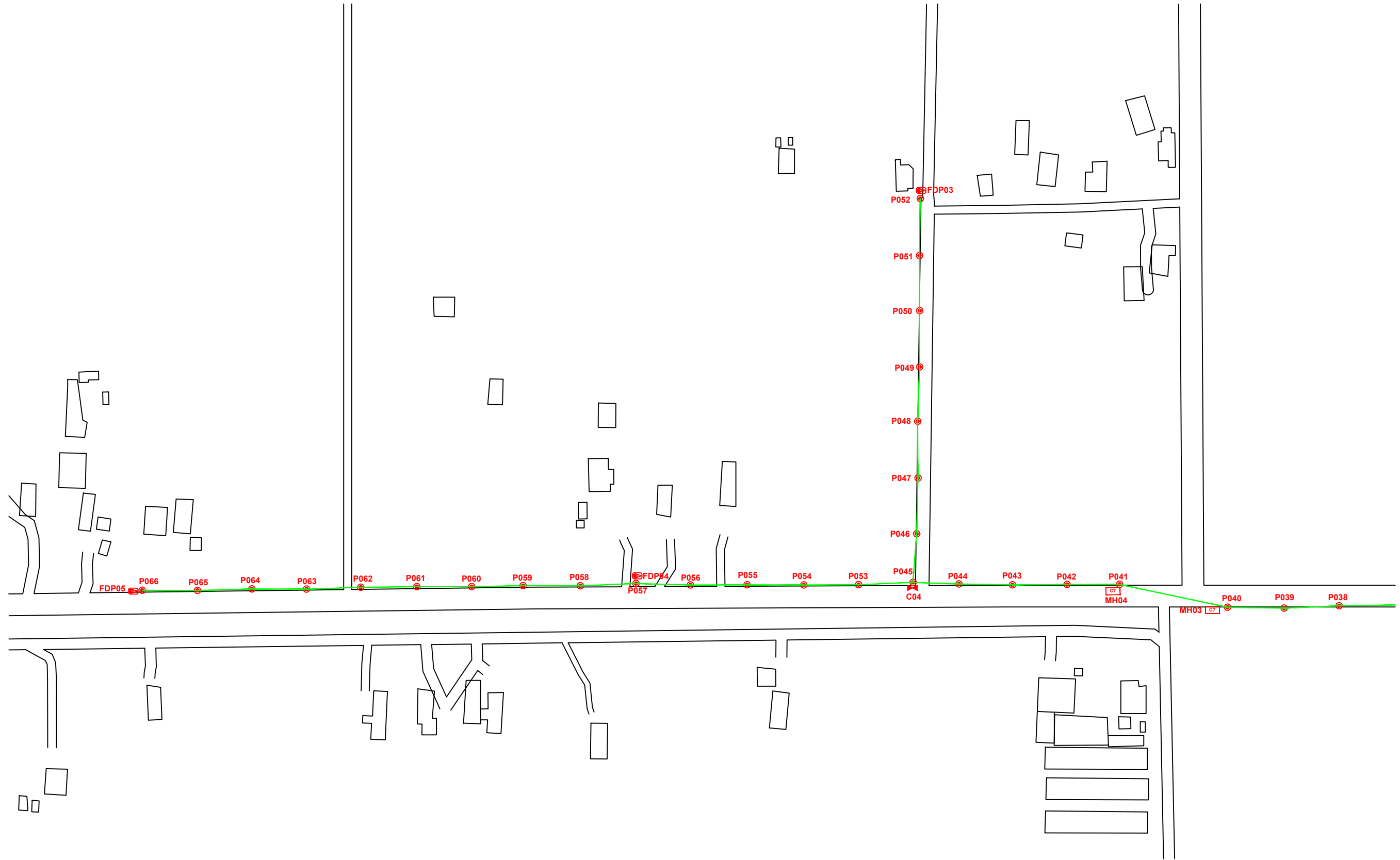
PROJECT PHASE

PROJECT PHASE 2

DESIGN BY	ZUL FAHMIE	DATE	23/12/2024
DRAWN BY	ZUL FAHMIE	SCALE	NOT TO SCALE
CHECKED BY	AZHAN HARIS	JOB NUMBER	ABD1078
DRAWING NUMBER		ABD1078	
THIS PRINT AND ITS COPYRIGHT ARE THE PROPERTY OF KNZ ENGINEERING SDN. BHD.		4/5	

Sheet

A3



LEGEND

	12C FOC		Installed 1:4 splitter in FDC		INSTALLED POLE (9M)		NEW MANHOLE		TENSION SMALL / TENSION BIG		MH NO.
	24C FOC		FDP		INSTALLED RISER		HOUSE NUMBER		EXISTING MANHOLE		EXISTING TNB POLE NO.
	48C FOC		CLOSURE		SUSPENSION BIG		EXISTING ALLO POLE		CLOSURE NO.		NEW POLE NO.
	90C FOC		NEW MANHOLE (PT)		SUSPENSION SMALL		LOOP		FDP NO.		
	144C FOC		INSTALLED POLE		FDC		FDP BOUNDARY		FDC NO.		

KEY PLAN

PROJECT OWNER

MAIN CONTRACTOR

SUB-CONTRACTOR

KNZ ENGINEERING SDN BHD
 NO. 60 & 60A, Jalan Kiebang Indah 1, Medan Kiebang Indah, 30100 Ipoh, Perak
 No Tel: 019-3695071
 Email: admin@knzengineering.com.my
 Website: www.knzengineering.com.my

PROJECT TITLE

SEKOLAH JENIS KEBANGSAAN (TAMIL) LADANG HUNTLY

DRAWING TITLE

TP DRAWING POP 2 AT SEKOLAH JENIS KEBANGSAAN (TAMIL) LADANG HUNTLY

PROJECT PHASE

PROJECT PHASE 2

DESIGN BY	ZUL FAHMIE	DATE	23/12/2024
DRAWN BY	ZUL FAHMIE	SCALE	NOT TO SCALE
CHECKED BY	AZHAN HARIS	JOB NUMBER	ABD1078
DRAWING NUMBER		ABD1078	
THIS PRINT AND ITS COPYRIGHT ARE THE PROPERTY OF KNZ ENGINEERING SDN. BHD.		5/5	
		A3	