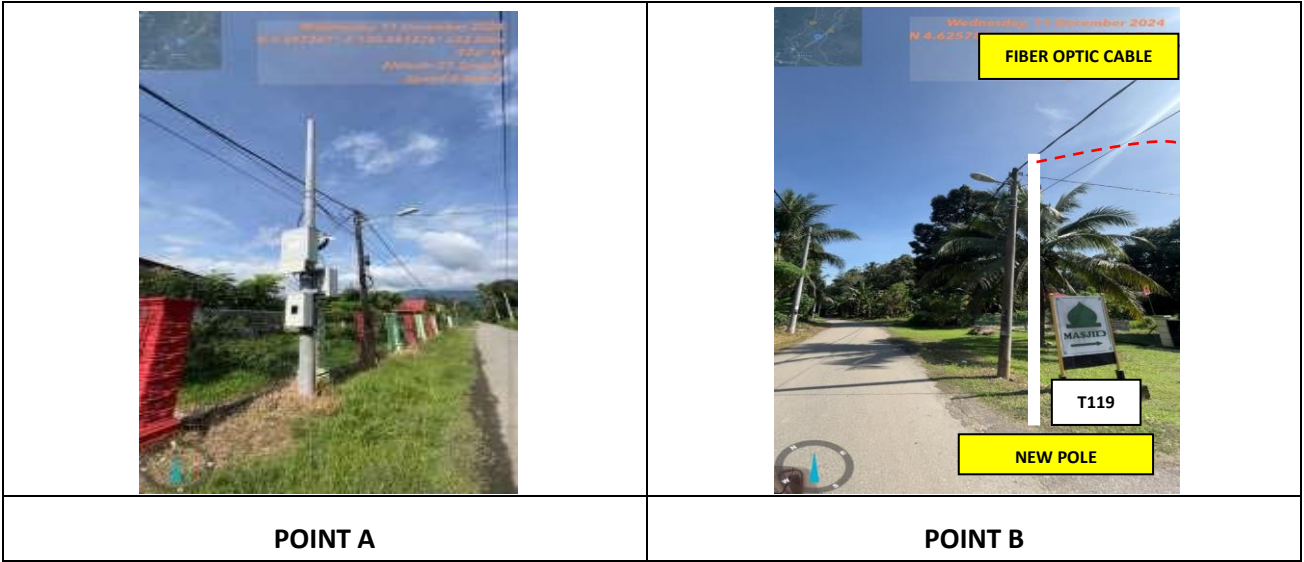


# TECHNICAL PROPOSAL

## ABC4022 SEKOLAH KEBANGSAAN ARA PANJANG (D-SIDE)

**Company Name** : ARATIMUR SDN BHD  
**Company Address** : A-08-13, 8<sup>th</sup> Floor, Block A, Radia Office, Persiaran Singgahsana, 40150 Bukit Jelutong, Shah Alam, Selangor  
**Prepared By** : Khairul Tajuddin  
**Date** : 24/01/2025



**Starting Point**

Site / Boundary Name : Sekolah Kebangsaan Ara Panjang  
 Address : Kampung Ara Panjang  
 District : Manong  
 Postcode : 33800  
 State : Perak  
 GPS Coordinate : 4.618393, 100.890389  
 LRD : A

**End Point**

Site / Boundary Name : Masjid Qariah Kg Panjang  
 Address : Kampung Pulau, Ara Panjang  
 District : Manong  
 Postcode : 33800  
 State : Perak  
 GPS Coordinate : 4.626226, 100.902892  
 LRD : B



**PROJEK PENYEDIAAN DAN PENYELENGGARAAN POINT OF PRESENCE (POP)  
 FASA 2: HAB INFRASTRUKTUR GENTIAN OPTIK BERHAMPIRAN DENGAN  
 SEKOLAH, KAWASAN PERINDUSTRIAN, PREMIS KERAJAAN DAN KOMUNITI  
 SEKITARNYA OLEH KEMENTERIAN KOMUNIKASI MALAYSIA - ZON UTARA  
 (KKMM.400-11/17/132(1))**



## 1.0 WORK SUMMARY

NO	PROPOSED DISTANCE AND METHOD	UNIT	QUANTITY
1	Horizontal Directional Drilling (HDD)	m	0
2	Carriage Way Open Trench (CW)	m	0
3	Grass Verge Open Trenching (GV)	m	0
4	Micro Trenching (MT)	m	0
	<b>Total</b>		<b>0</b>

NO	OTHER INFORMATION	UNIT	QUANTITY
1	Installation of Short Span ADSS Fibre Cables	m	4484
2	Install New Pole	ea	119
3	Install New JRC7 Manhole	ea	0
4	Install GI Riser 100mm	ea	0
5	Install Fiber Distribution Point and Closure (Splicing, Termination and Testing	ea	16
6	Estimated Time Required For Completion	days	30



PROJEK PENYEDIAAN DAN PENYELENGGARAAN POINT OF PRESENCE (POP)  
FASA 2: HAB INFRASTRUKTUR GENTIAN OPTIK BERHAMPIRAN DENGAN  
SEKOLAH, KAWASAN PERINDUSTRIAN, PREMIS KERAJAAN DAN KOMUNITI  
SEKITARNYA OLEH KEMENTERIAN KOMUNIKASI MALAYSIA - ZON UTARA  
(KKMM.400-11/17/132(1))



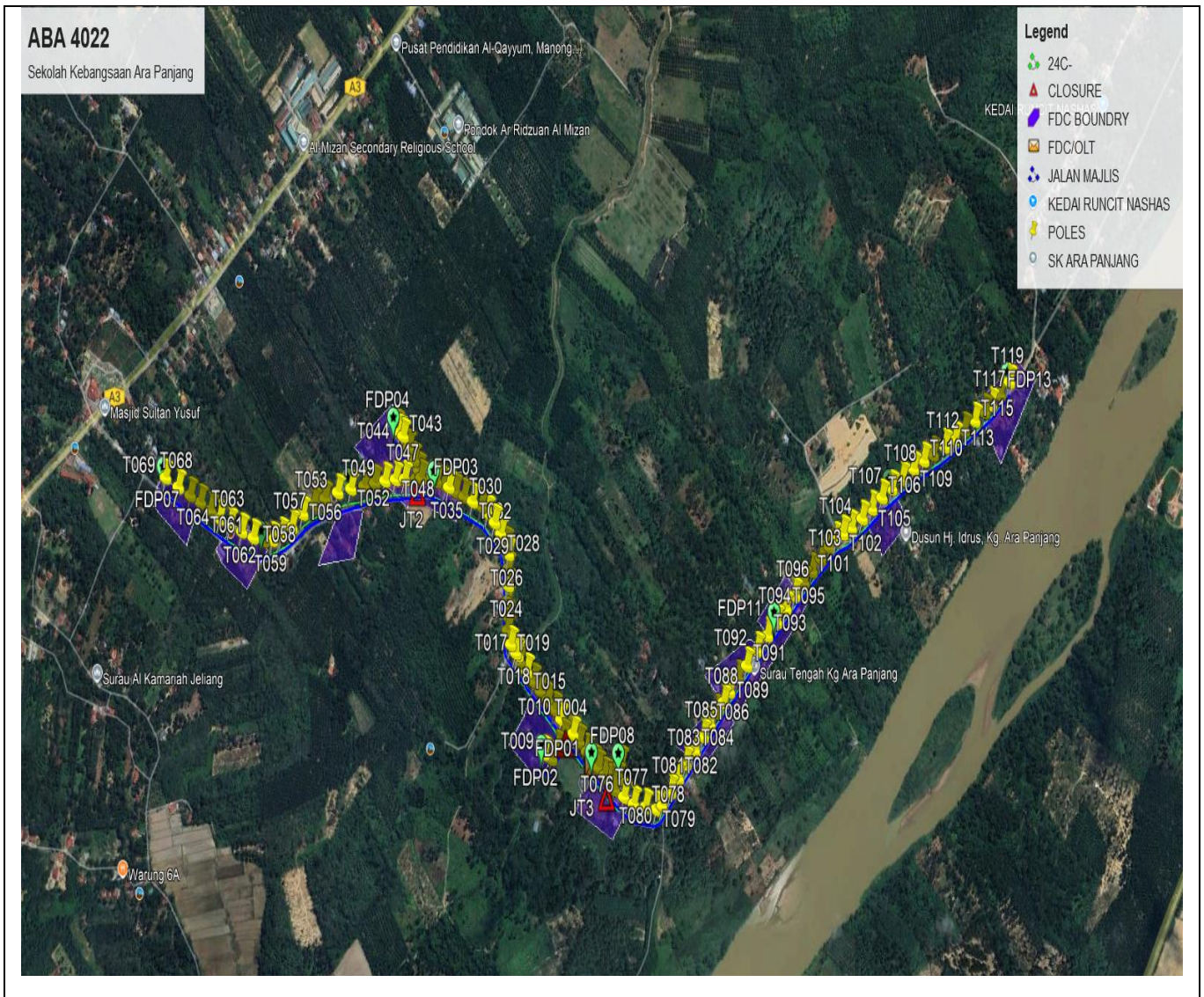
## 2.0 LOCAL AUTHORITY SUMMARY

Daerah Kuala Kangsar

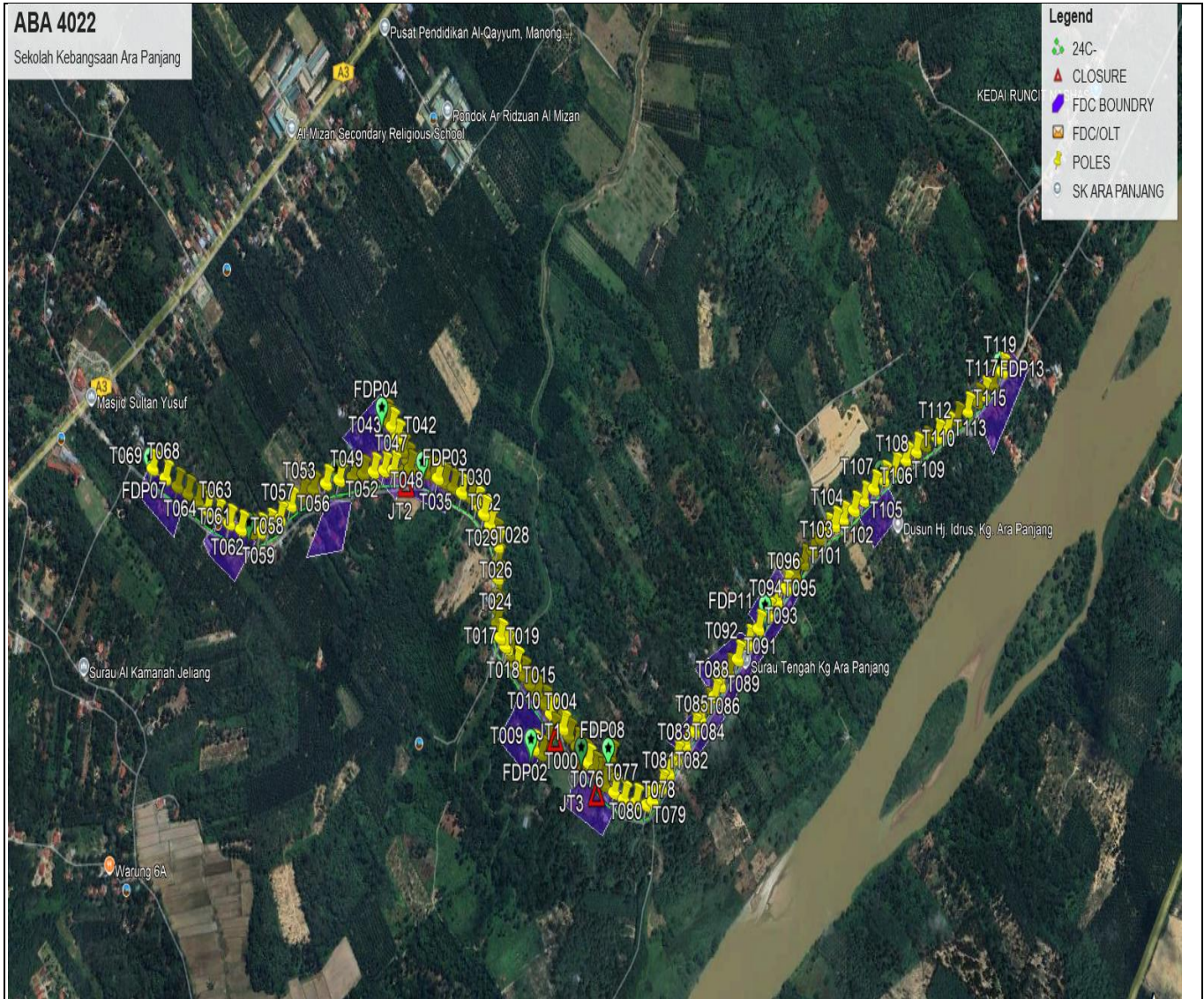
NO	ITEMS	OWNER	QUANTITY	DISTANCE (m)
1	HDD	JKR	-	-
		Majlis	-	-
		Estate / Private Land	-	-
2	New Pole	JKR	-	-
		Majlis	119	4484
		Estate / Private Land	-	-
<b>Total distance (m)</b>				<b>4484m</b>

### 3.0 SITE PLAN- KMZ

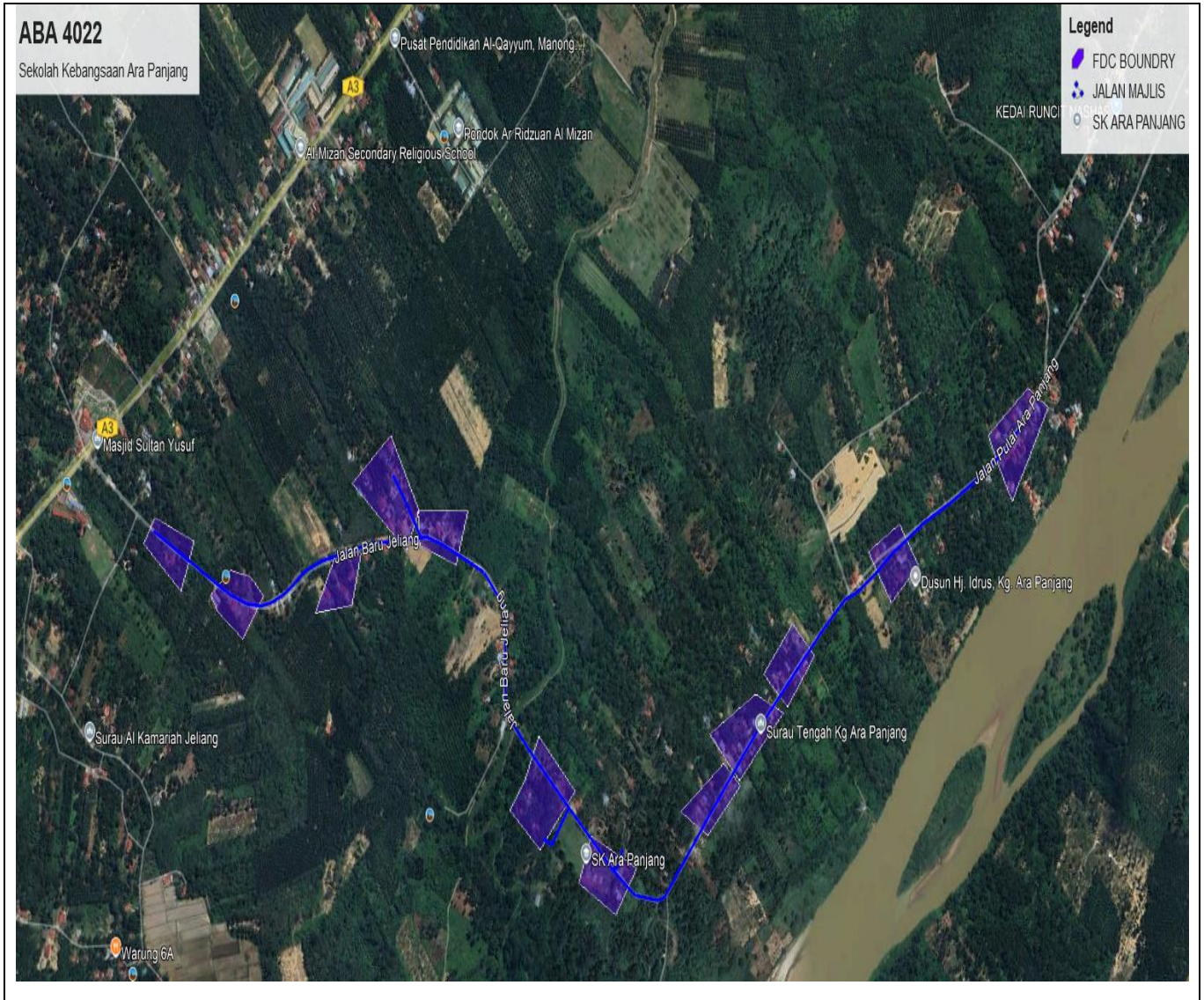
#### 3.1 Overview Site Area



### 3.2 Site Boundry



### 3.3 Road Boundry



#### 4.0 PROPOSED MANHOLE & HDD AND NEW POLE

No.	Pole & Manhole ID	Distance	Latitude	Longitude	Local Authority
1	FDC/ T000		4.618393	100.890389	Majlis Perbandaran Kuala Kangsar
2	T001	17	4.618496	100.89026	Majlis Perbandaran Kuala Kangsar
3	T002	34	4.618694	100.890032	Majlis Perbandaran Kuala Kangsar
4	T003	32	4.61887	100.88981	Majlis Perbandaran Kuala Kangsar
5	T004	28	4.619018	100.889622	Majlis Perbandaran Kuala Kangsar
6	T005	17	4.619119	100.889514	Majlis Perbandaran Kuala Kangsar
7	T006	26	4.618952	100.889345	Majlis Perbandaran Kuala Kangsar
8	T007	32	4.618739	100.889169	Majlis Perbandaran Kuala Kangsar
9	T008	29	4.618546	100.889006	Majlis Perbandaran Kuala Kangsar
10	T009	28	4.618639	100.888782	Majlis Perbandaran Kuala Kangsar
11	T010	33	4.619281	100.88927	Majlis Perbandaran Kuala Kangsar
12	T011	30	4.619458	100.889075	Majlis Perbandaran Kuala Kangsar
13	T012	30	4.619631	100.888865	Majlis Perbandaran Kuala Kangsar
14	T013	31	4.619798	100.888646	Majlis Perbandaran Kuala Kangsar
15	T014	31	4.619975	100.88844	Majlis Perbandaran Kuala Kangsar
16	T015	31	4.620159	100.888234	Majlis Perbandaran Kuala Kangsar
17	T016	32	4.620343	100.888019	Majlis Perbandaran Kuala Kangsar
18	T017	14	4.620456	100.887961	Majlis Perbandaran Kuala Kangsar
19	T018	9	4.620502	100.887898	Majlis Perbandaran Kuala Kangsar
20	T019	26	4.62066	100.887746	Majlis Perbandaran Kuala Kangsar
21	T020	30	4.620916	100.887651	Majlis Perbandaran Kuala Kangsar
22	T021	31	4.621192	100.887641	Majlis Perbandaran Kuala Kangsar
23	T022	30	4.621467	100.887645	Majlis Perbandaran Kuala Kangsar
24	T023	33	4.621763	100.887653	Majlis Perbandaran Kuala Kangsar
25	T024	35	4.622075	100.887653	Majlis Perbandaran Kuala Kangsar
26	T025	31	4.622346	100.887649	Majlis Perbandaran Kuala Kangsar
27	T026	22	4.622521	100.887578	Majlis Perbandaran Kuala Kangsar
28	T027	30	4.62273	100.887413	Majlis Perbandaran Kuala Kangsar
29	T028	31	4.622935	100.887224	Majlis Perbandaran Kuala Kangsar
30	T029	31	4.623116	100.887014	Majlis Perbandaran Kuala Kangsar
31	T030	24	4.623234	100.886824	Majlis Perbandaran Kuala Kangsar
32	T031	31	4.62332	100.886566	Majlis Perbandaran Kuala Kangsar
33	T032	31	4.623408	100.88631	Majlis Perbandaran Kuala Kangsar
34	T033	31	4.623499	100.886055	Majlis Perbandaran Kuala Kangsar
35	T034	24	4.623577	100.885856	Majlis Perbandaran Kuala Kangsar
36	T035	18	4.623624	100.885707	Majlis Perbandaran Kuala Kangsar
37	T036	26	4.623682	100.88548	Majlis Perbandaran Kuala Kangsar
38	T037	17	4.623733	100.885337	Majlis Perbandaran Kuala Kangsar
39	T038	35	4.623736	100.88502	Majlis Perbandaran Kuala Kangsar
40	T039	18	4.623883	100.884948	Majlis Perbandaran Kuala Kangsar
41	T040	27	4.624069	100.8848	Majlis Perbandaran Kuala Kangsar
42	T041	32	4.624303	100.884643	Majlis Perbandaran Kuala Kangsar
43	T042	31	4.624514	100.884471	Majlis Perbandaran Kuala Kangsar
44	T043	13	4.624581	100.884378	Majlis Perbandaran Kuala Kangsar
45	T044	16	4.624689	100.884283	Majlis Perbandaran Kuala Kangsar
46	T045	20	4.623721	100.884851	Majlis Perbandaran Kuala Kangsar
47	T046	19	4.623709	100.884534	Majlis Perbandaran Kuala Kangsar
48	T047	30	4.623698	100.884262	Majlis Perbandaran Kuala Kangsar
49	T048	35	4.623668	100.883951	Majlis Perbandaran Kuala Kangsar
50	T049	36	4.623619	100.883648	Majlis Perbandaran Kuala Kangsar
51	T050	37	4.623561	100.883334	Majlis Perbandaran Kuala Kangsar
52	T051	45	4.623502	100.882941	Majlis Perbandaran Kuala Kangsar

53	T052	45	4.623424	100.88255	Majlis Perbandaran Kuala Kangsar
54	T053	45	4.623303	100.882174	Majlis Perbandaran Kuala Kangsar
55	T054	40	4.623183	100.881852	Majlis Perbandaran Kuala Kangsar
56	T055	42	4.623003	100.881528	Majlis Perbandaran Kuala Kangsar
57	T056	45	4.622739	100.881218	Majlis Perbandaran Kuala Kangsar
58	T057	38	4.622579	100.880911	Majlis Perbandaran Kuala Kangsar
59	T058	31	4.622496	100.880644	Majlis Perbandaran Kuala Kangsar
60	T059	29	4.622478	100.880388	Majlis Perbandaran Kuala Kangsar
61	T060	35	4.622533	100.880081	Majlis Perbandaran Kuala Kangsar
62	T061	41	4.622639	100.879739	Majlis Perbandaran Kuala Kangsar
63	T062	42	4.622751	100.879387	Majlis Perbandaran Kuala Kangsar
64	T063	38	4.622872	100.879072	Majlis Perbandaran Kuala Kangsar
65	T064	35	4.623022	100.87879	Majlis Perbandaran Kuala Kangsar
66	T065	29	4.623167	100.878483	Majlis Perbandaran Kuala Kangsar
67	T066	38	4.623296	100.87818	Majlis Perbandaran Kuala Kangsar
68	T067	42	4.623444	100.87783	Majlis Perbandaran Kuala Kangsar
69	T068	47	4.623615	100.877451	Majlis Perbandaran Kuala Kangsar
70	T069	27	4.618263	100.890574	Majlis Perbandaran Kuala Kangsar
71	T070	23	4.618144	100.890724	Majlis Perbandaran Kuala Kangsar
72	T071	15	4.618148	100.890847	Majlis Perbandaran Kuala Kangsar
73	T072	14	4.618201	100.890949	Majlis Perbandaran Kuala Kangsar
74	T073	34	4.618494	100.891052	Majlis Perbandaran Kuala Kangsar
75	T074	24	4.618001	100.890867	Majlis Perbandaran Kuala Kangsar
76	T075	35	4.617875	100.891146	Majlis Perbandaran Kuala Kangsar
77	T076	36	4.617751	100.891435	Majlis Perbandaran Kuala Kangsar
78	T077	39	4.6177	100.891784	Majlis Perbandaran Kuala Kangsar
79	T078	35	4.617662	100.892101	Majlis Perbandaran Kuala Kangsar
80	T079	23	4.617727	100.892285	Majlis Perbandaran Kuala Kangsar
81	T080	37	4.617989	100.892519	Majlis Perbandaran Kuala Kangsar
82	T081	37	4.618249	100.892746	Majlis Perbandaran Kuala Kangsar
83	T082	39	4.618516	100.89296	Majlis Perbandaran Kuala Kangsar
84	T083	43	4.618777	100.893232	Majlis Perbandaran Kuala Kangsar
85	T084	40	4.619036	100.89347	Majlis Perbandaran Kuala Kangsar
86	T085	32	4.619259	100.893669	Majlis Perbandaran Kuala Kangsar
87	T086	34	4.619483	100.893868	Majlis Perbandaran Kuala Kangsar
88	T087	32	4.619679	100.894065	Majlis Perbandaran Kuala Kangsar
89	T088	32	4.619886	100.894238	Majlis Perbandaran Kuala Kangsar
90	T089	39	4.620129	100.894491	Majlis Perbandaran Kuala Kangsar
91	T090	39	4.620378	100.894747	Majlis Perbandaran Kuala Kangsar
92	T091	46	4.620668	100.895052	Majlis Perbandaran Kuala Kangsar
93	T092	45	4.620949	100.895351	Majlis Perbandaran Kuala Kangsar
94	T093	43	4.621207	100.895625	Majlis Perbandaran Kuala Kangsar
95	T094	41	4.621466	100.895889	Majlis Perbandaran Kuala Kangsar
96	T095	41	4.621714	100.896148	Majlis Perbandaran Kuala Kangsar
97	T096	41	4.621957	100.89642	Majlis Perbandaran Kuala Kangsar
98	T097	38	4.622176	100.896662	Majlis Perbandaran Kuala Kangsar
99	T098	39	4.622417	100.896933	Majlis Perbandaran Kuala Kangsar
100	T099	37	4.622637	100.897179	Majlis Perbandaran Kuala Kangsar
101	T100	26	4.622774	100.897368	Majlis Perbandaran Kuala Kangsar
102	T101	27	4.6229	100.897574	Majlis Perbandaran Kuala Kangsar
103	T102	31	4.623007	100.897828	Majlis Perbandaran Kuala Kangsar
104	T103	41	4.623192	100.898146	Majlis Perbandaran Kuala Kangsar
105	T104	38	4.62338	100.89843	Majlis Perbandaran Kuala Kangsar
106	T105	41	4.623598	100.898732	Majlis Perbandaran Kuala Kangsar
107	T106	39	4.623773	100.899026	Majlis Perbandaran Kuala Kangsar
108	T107	39	4.623951	100.899336	Majlis Perbandaran Kuala Kangsar
109	T108	45	4.624149	100.89967	Majlis Perbandaran Kuala Kangsar



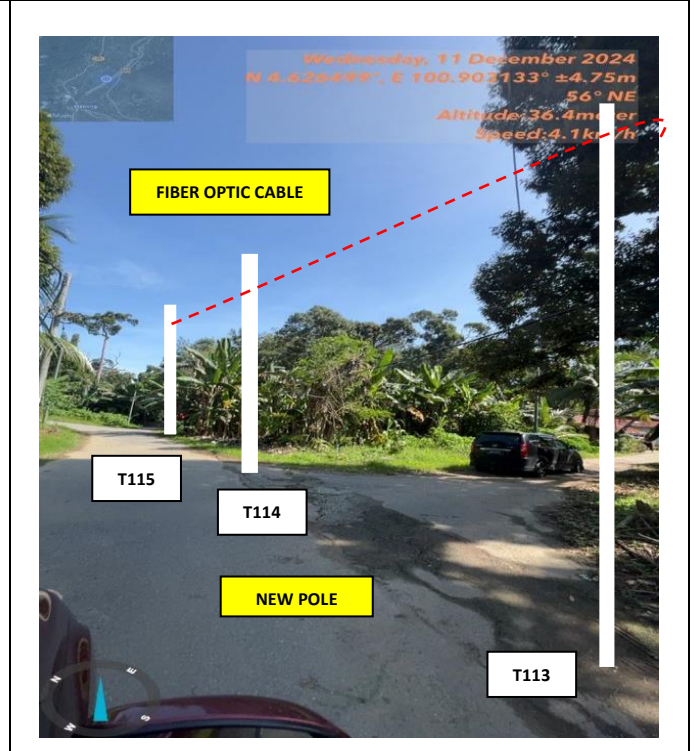
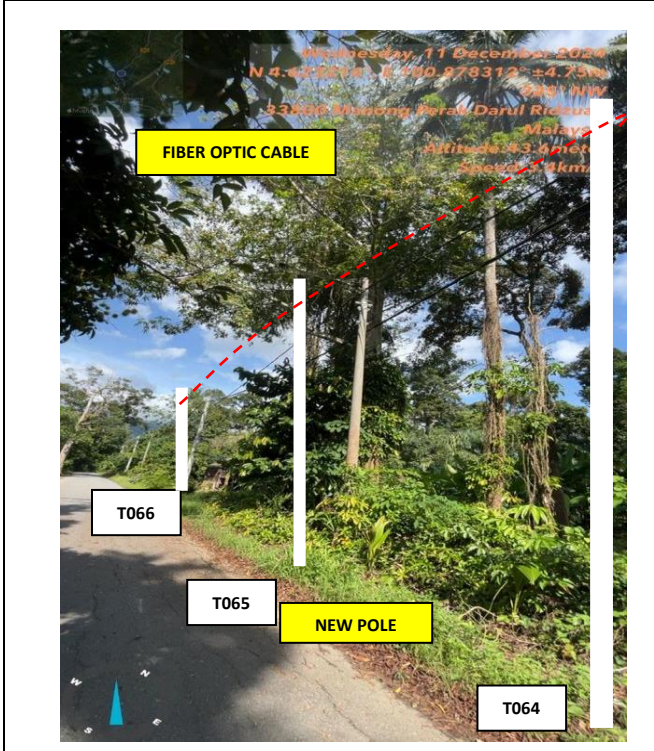
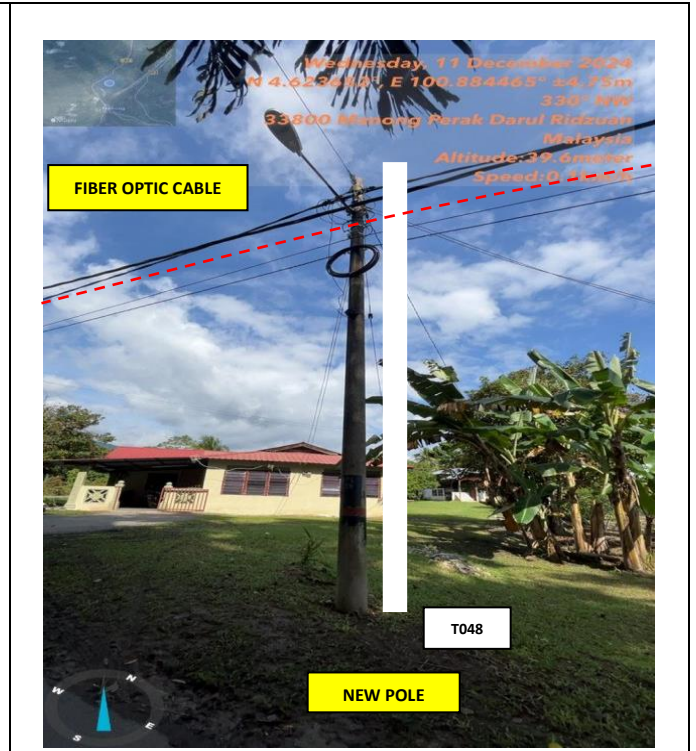
**PROJEK PENYEDIAAN DAN PENYELENGGARAAN POINT OF PRESENCE (POP)  
 FASA 2: HAB INFRASTRUKTUR GENTIAN OPTIK BERHAMPIRAN DENGAN  
 SEKOLAH, KAWASAN PERINDUSTRIAN, PREMIS KERAJAAN DAN KOMUNITI  
 SEKITARNYA OLEH KEMENTERIAN KOMUNIKASI MALAYSIA - ZON UTARA  
 (KKMM.400-11/17/132(1))**





110	T109	39	4.624312	100.899966	Majlis Perbandaran Kuala Kangsar
111	T110	36	4.624429	100.900244	Majlis Perbandaran Kuala Kangsar
112	T111	42	4.624583	100.900587	Majlis Perbandaran Kuala Kangsar
113	T112	38	4.624729	100.900891	Majlis Perbandaran Kuala Kangsar
114	T113	37	4.624906	100.901176	Majlis Perbandaran Kuala Kangsar
115	T114	41	4.625094	100.901494	Majlis Perbandaran Kuala Kangsar
116	T115	40	4.625267	100.901787	Majlis Perbandaran Kuala Kangsar
117	T116	26	4.6254	100.901991	Majlis Perbandaran Kuala Kangsar
118	T117	37	4.625603	100.902245	Majlis Perbandaran Kuala Kangsar
119	T118	40	4.625846	100.902522	Majlis Perbandaran Kuala Kangsar

5.0 SITE PHOTO- PROPOSED NEW POLE



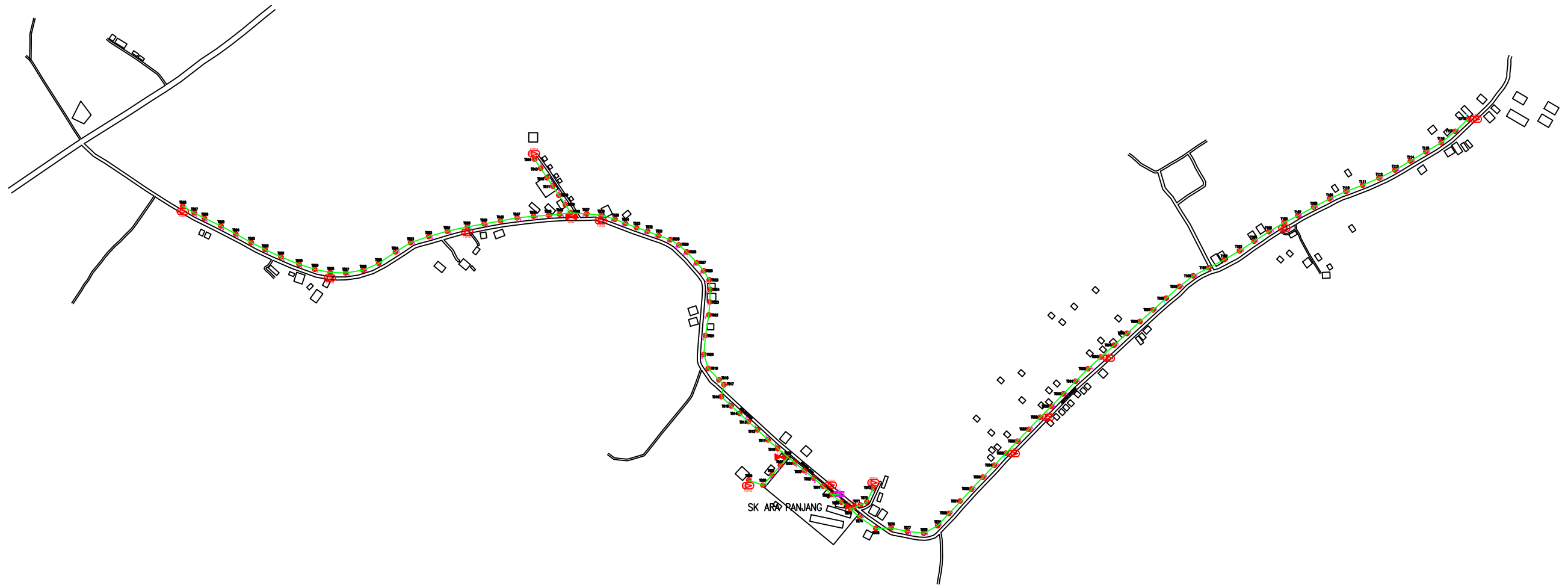


	<p align="center"><b>PROJEK PENYEDIAAN DAN PENYELENGGARAAN POINT OF PRESENCE (POP)          FASA 2: HAB INFRASTRUKTUR GENTIAN OPTIK BERHAMPIRAN DENGAN          SEKOLAH, KAWASAN PERINDUSTRIAN, PREMIS KERAJAAN DAN KOMUNITI          SEKITARNYA OLEH KEMENTERIAN KOMUNIKASI MALAYSIA - ZON UTARA          (KKMM.400-11/17/132(1))</b></p>	
---	--	---

**6.0 3<sup>rd</sup> PARTIES DEPENDENCIES**

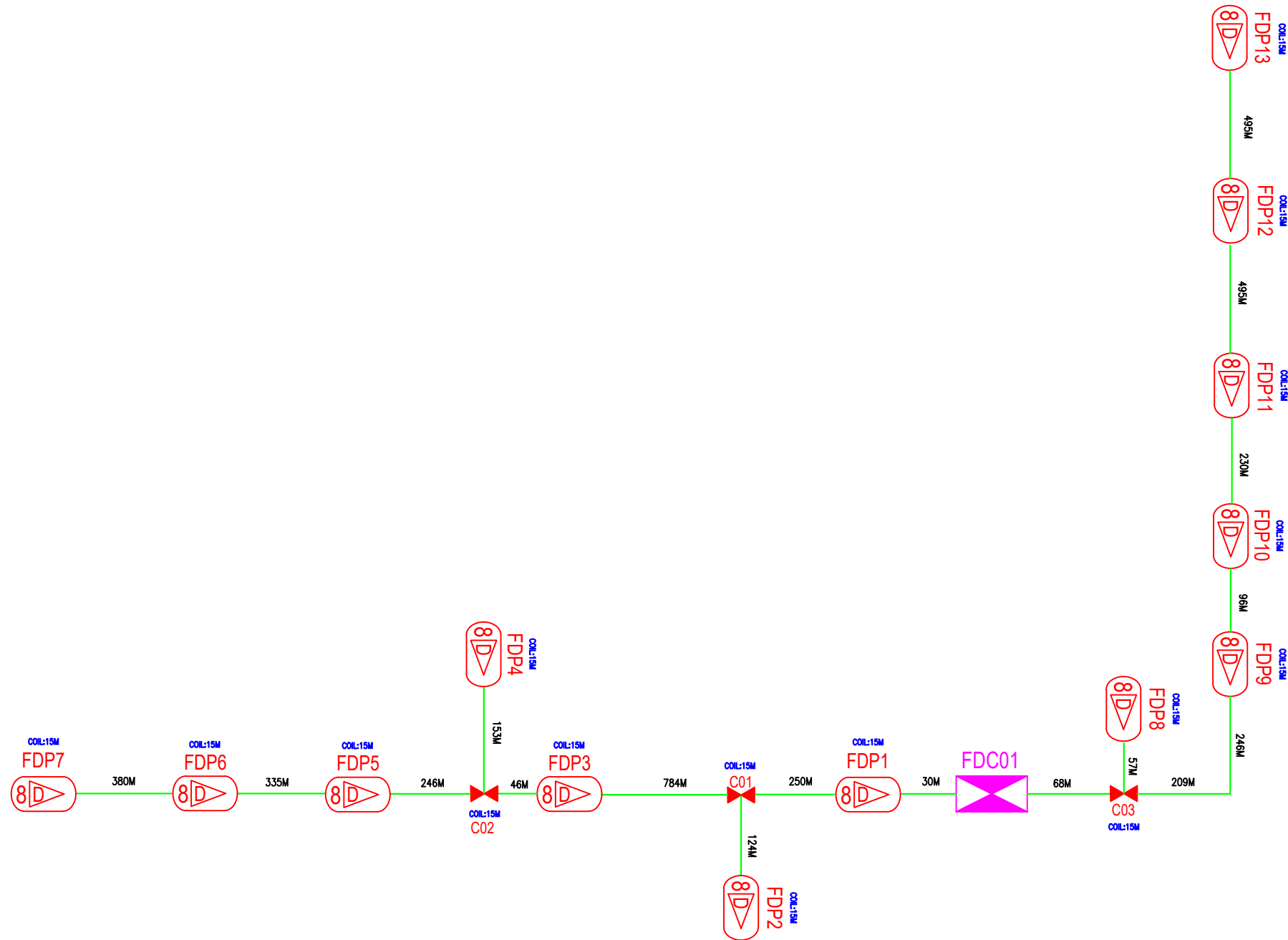
NO.	LOCAL COUNCIL/ AUTHORITY	REMARK
1	Majlis Perbandaran Kuala Kangsar	

CONSTRUCTION DRAWING ABA4022-SEKOLAH ARA PANJANG



LEGEND	NOS.		NOS.		NOS.		NOS.		NOS.		NOS.
12C FOC		Installed 1:4 splitter in FDC		Installed Pole (9m)		C7	New Manhole(JRC7)	TS / TB	Tension Small / Tension Big	MH1	MH NO.
24C FOC	4484	FDP with (1:8) splitter	13	Installed Riser		#	House Number	Existing Manhole	TKS-1	Existing TNB Pole NO.	
48C FOC		Closure	3	Suspension Big		●	Existing TNB Pole	C01	Closure NO.	P001	New Pole NO.
96C FOC		New Manhole (PIT)		Suspension Small		○	LOOP	FDP1	FDP NO.	(A)	SEE A-A in this page
144C FOC		Installed Pole (7.5M)	119	FDC		—	FDP Boundary	FDC	FDC NO.	(A)	SEE SHEET XXX

KEY PLAN :	PROJECT OWNER :	MAIN CONTRACTOR :	SUB-CONTRACTOR :	PROJECT TITLE :	DRAWING TITLE :	Design By : ENGINEER	Date : DATE
				ABA4022-SEKOLAH ARA PANJANG	DRAWING TITLE LINE 1 DRAWING TITLE LINE 2 DRAWING TITLE LINE 3 DRAWING TITLE LINE 4	Drawn By : CAD ENGINEER	Scale : SCALE
					PROJECT PHASE :	Checked By : ENGINEER	Job Number : JOB/NUMBER
					PROJECT PHASE	DRAWING NUMBER : DRAWING/NUMBER	
						THIS PRINT AND ITS COPYRIGHT ARE THE PROPERTY OF ALLO TECHNOLOGY SDN BHD	
							Sheet : SHEET Size : A3



LEGEND	NOS.		NOS.		NOS.		NOS.		NOS.		NOS.
	12C FOC			Installed Pole (9m)		New Manhole(JRC7)		Tension Small / Tension Big		MH NO.	
	24C FOC	4484		FDP with (1:8) splitter	13		House Number		TKS-1	Existing TNB Pole NO.	
	48C FOC			Closure	3		Existing TNB Pole		P001	New Pole NO.	
	96C FOC			New Manhole (PIT)			LOOP		FDP1	FDP NO.	(A) SEE A-A in this page
	144C FOC			Installed Pole (7.5M)	119		FDP Boundary		FDC	FDC NO.	(A) SEE SHEET XXX

KEY PLAN :



SUB-CONTRACTOR :  
  
 ARA TIMUR SDN BHD  
 A-08-13,8TH FLOOR  
 BLOCK A RADIA OFFICE  
 PERSIARAN SINGGAHSANA  
 40150 BUKIT JELUTONG  
 SHAH ALAM SELANGOR

PROJECT TITLE:  
 ABA4022 - SEKOLAH KEBANGSAAN ARA PANJANG

DRAWING TITLE:  
 SLD  
 ABA4022 - SEKOLAH KEBANGSAAN ARA PANJANG

PROJECT PHASE:

Design By : MANTO	Date : 14 FEBRUARY 2025
Drawn By : MANTO	Scale :
Checked By :	Job Number :
DRAWING NUMBER :	Sheet :
THIS PRINT AND ITS COPYRIGHT ARE THE PROPERTY OF ALLO TECHNOLOGY SDN BHD	
Size : A3	