

TECHNICAL PROPOSAL POP2 ABAB006 SEKOLAH KEBANGSAAN SUNGAI SUMUN (D-SIDE)

Company Name : T&H PANJI EMPIRE SDN BHD
Company Address : 39A Jalan Jelapang 5, Pusat Komersial Jelapang, 30020 Ipoh, Perak Darul Ridzuan.
Prepared By : Mat Salleh Bin Mat Zain
Date : 02/01/2025



Starting Point

Site / Boundary Name : Kampung Sungai Sumun
Address : Sekolah Kebangsaan Sungai Sumun
District : Teluk Intan
Postcode : 36300
State : Perak
GPS Coordinate : 3.876479, 100.852345
LRD : A

End Point

Site / Boundary Name : Kampung Sungai Sumun
Address : Taman Sri Emas
District : Teluk Intan
Postcode : 36300
State : Perak
GPS Coordinate : 3.890035, 100.851654
LRD : B



PROJEK PENYEDIAAN DAN PENYELENGGARAAN POINT OF PRESENT (POP) FASA 2: HAB INFRASTUKTUR GENTIAN OPTIK BERHAMPIRAN DENGAN SEKOLAH, KAWASAN PERINDUSTRIAN, PREMIS KERAJAAN DAN KOMUNITI SEKITARNYA OLEH KEMENTERIAN KOMUNIKASI MALAYSIA - ZON UTARA (KKMM.400-11/17/132(1))



1.0 WORK SUMMARY

| NO | PROPOSED DISTANCE AND METHOD | UNIT | QUANTITY |
|-------|---------------------------------------|------|----------|
| 1 | Horizontal Directional Drilling (HDD) | m | 0 |
| 2 | Carriage Way Open Trench (CW) | m | 0 |
| 3 | Grass Verge Open Trenching (GV) | m | 0 |
| 4 | Micro Trenching (MT) | m | 0 |
| Total | | | 0 |

| NO | OTHER INFORMATION | UNIT | QUANTITY |
|----|--|------|----------|
| 1 | Installation of Short Span ADSS Fiber Cables | m | 4400 |
| 2 | Install New Pole | ea | 100 |
| 3 | Install New JRC7 Manhole | ea | 0 |
| 4 | Install GI Riser 100mm | ea | 0 |
| 5 | Install Fiber Distribution Point | ea | 13 |
| 6 | Closure (Splicing, Termination and Testing) | ea | 4 |



PROJEK PENYEDIAAN DAN PENYELENGGARAAN POINT OF PRESENT (POP) FASA 2: HAB INFRASTUKTUR GENTIAN OPTIK BERHAMPIRAN DENGAN SEKOLAH, KAWASAN PERINDUSTRIAN, PREMIS KERAJAAN DAN KOMUNITI SEKITARNYA OLEH KEMENTERIAN KOMUNIKASI MALAYSIA - ZON UTARA (KKMM.400-11/17/132(1))

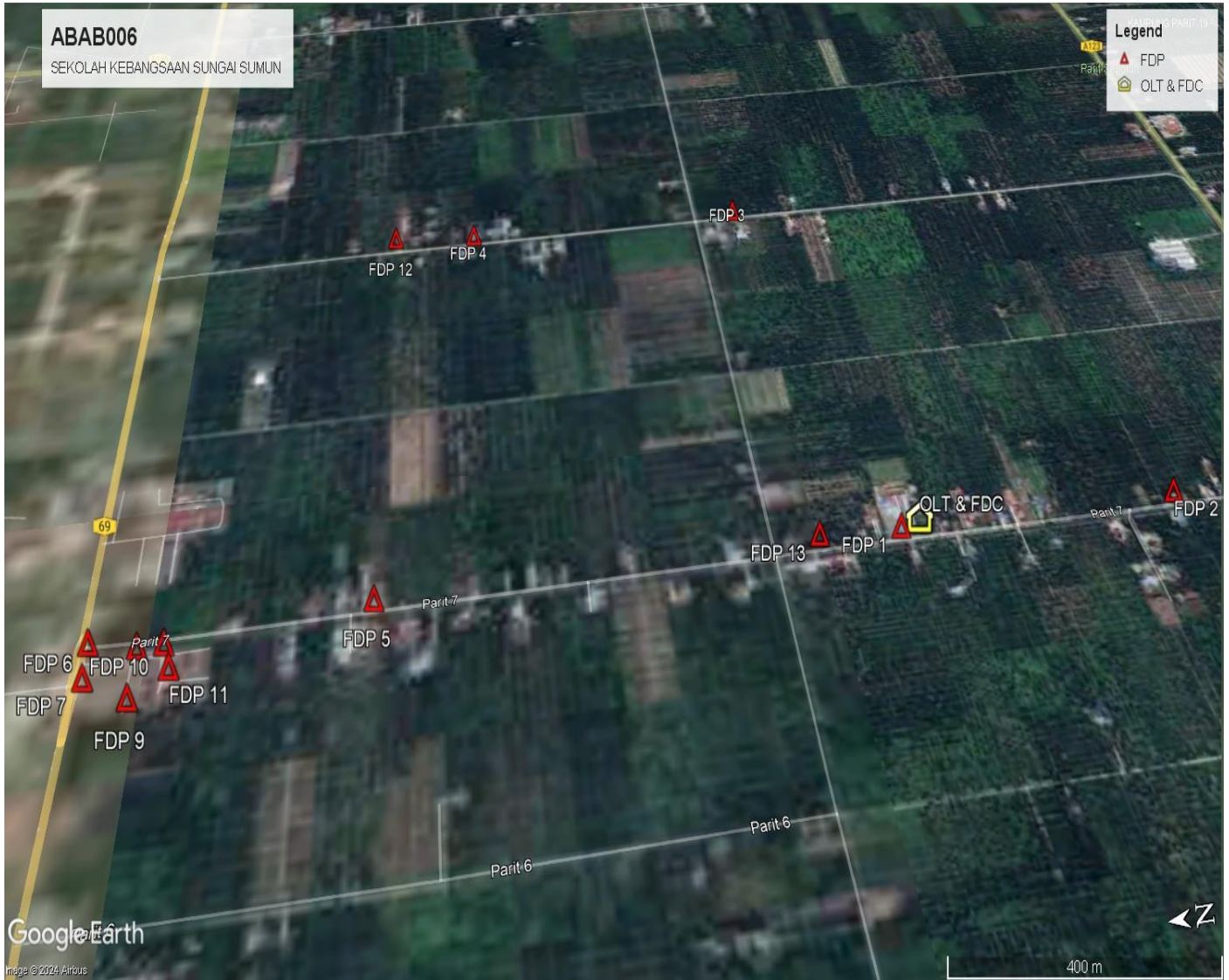


2.0 LOCAL AUTHORITY SUMMARY

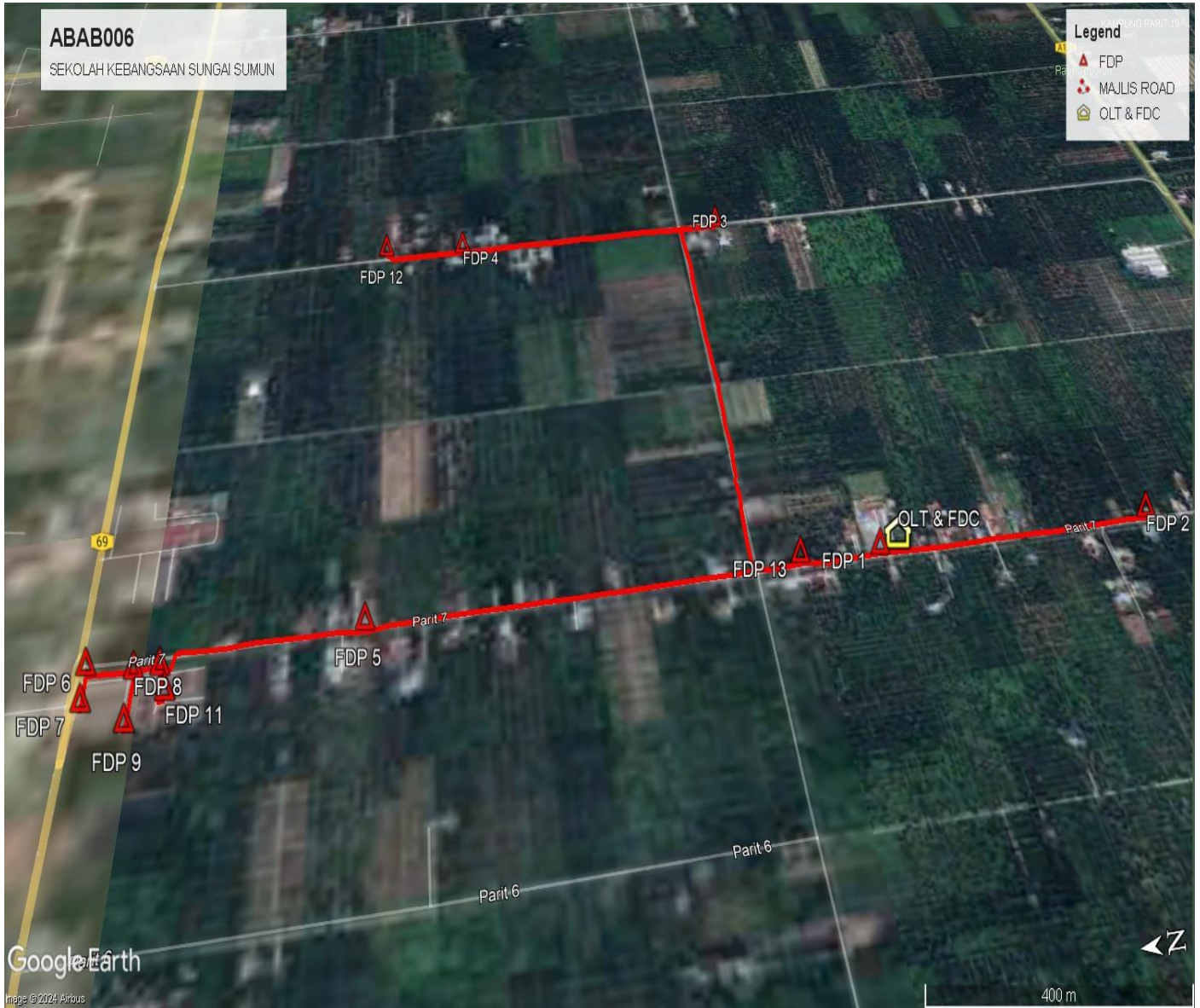
Majlis Perbandaran Teluk Intan

| NO | ITEMS | Owner | Quantity | Distance (m) |
|---------------------------|----------|-----------------------|----------|--------------|
| 1 | HDD | JKR | - | - |
| | | Majlis | - | - |
| | | Estate / Private Land | - | - |
| 2 | New Pole | JKR | - | - |
| | | Majlis | 100 | 4400 |
| | | Estate / Private Land | - | - |
| Total Distance (m) | | | | 4400 |

3.2 Overview FDP Location



3.3 Site Plan - KMZ Routing (All Local Authority)



4.0 PROPOSED NEW MANHOLE

| Proposed New Manhole Coordinate | | | | | |
|---------------------------------|----------------|--------------|----------|-----------|-----------------|
| No. | Manhole Number | Distance (m) | Latitude | Longitude | Local Authority |
| 1 | MH01 | - | - | - | - |
| 2 | MH02 | - | - | - | - |

5.0 PROPOSED NEW POLE

| Proposed New Pole Coordinate | | | | | |
|------------------------------|----------------|--------------|----------|------------|--------------------------------|
| No. | Pole Number | Distance (m) | Latitude | Longitude | Local Authority |
| 1 | T001 (OLT&FDC) | 50 | 3.876467 | 100.852354 | Majlis Perbandaran Teluk Intan |
| 2 | T002 | 47 | 3.876031 | 100.852330 | Majlis Perbandaran Teluk Intan |
| 3 | T003 | 51 | 3.875604 | 100.852323 | Majlis Perbandaran Teluk Intan |
| 4 | T004 | 49 | 3.875156 | 100.852325 | Majlis Perbandaran Teluk Intan |
| 5 | T005 | 41 | 3.874700 | 100.852336 | Majlis Perbandaran Teluk Intan |
| 6 | T006 | 45 | 3.874336 | 100.852329 | Majlis Perbandaran Teluk Intan |
| 7 | T007 | 44 | 3.873931 | 100.852322 | Majlis Perbandaran Teluk Intan |
| 8 | T008 | 50 | 3.873541 | 100.852316 | Majlis Perbandaran Teluk Intan |
| 9 | T009 | 46 | 3.873099 | 100.852336 | Majlis Perbandaran Teluk Intan |
| 10 | T010 | 44 | 3.872690 | 100.852327 | Majlis Perbandaran Teluk Intan |
| 11 | T011 | 47 | 3.872289 | 100.852340 | Majlis Perbandaran Teluk Intan |
| 12 | T012 (FDP 2) | 35 | 3.871868 | 100.852328 | Majlis Perbandaran Teluk Intan |
| 13 | T013 (FDP 1) | 56 | 3.876784 | 100.852346 | Majlis Perbandaran Teluk Intan |
| 14 | T014 | 43 | 3.877301 | 100.852340 | Majlis Perbandaran Teluk Intan |
| 15 | T015 | 53 | 3.877696 | 100.852328 | Majlis Perbandaran Teluk Intan |
| 16 | T016 (FDP 13) | 52 | 3.878172 | 100.852386 | Majlis Perbandaran Teluk Intan |
| 17 | T017 | 30 | 3.878636 | 100.852349 | Majlis Perbandaran Teluk Intan |
| 18 | T018 (JOINT 1) | 16 | 3.878897 | 100.852382 | Majlis Perbandaran Teluk Intan |
| 19 | T019 | 54 | 3.879018 | 100.852466 | Majlis Perbandaran Teluk Intan |
| 20 | T020 | 56 | 3.879010 | 100.852944 | Majlis Perbandaran Teluk Intan |
| 21 | T021 (JOINT 2) | 30 | 3.878978 | 100.853449 | Majlis Perbandaran Teluk Intan |
| 22 | T022 | 29 | 3.878973 | 100.853716 | Majlis Perbandaran Teluk Intan |
| 23 | T023 | 6 | 3.878986 | 100.853978 | Majlis Perbandaran Teluk Intan |
| 24 | T024 | 25 | 3.878927 | 100.853997 | Majlis Perbandaran Teluk Intan |
| 25 | T025 | 47 | 3.878941 | 100.854217 | Majlis Perbandaran Teluk Intan |
| 26 | T026 | 43 | 3.878912 | 100.854638 | Majlis Perbandaran Teluk Intan |
| 27 | T027 | 35 | 3.878910 | 100.855020 | Majlis Perbandaran Teluk Intan |
| 28 | T028 | 40 | 3.878905 | 100.855329 | Majlis Perbandaran Teluk Intan |
| 29 | T029 | 30 | 3.878892 | 100.855687 | Majlis Perbandaran Teluk Intan |
| 30 | T030 | 41 | 3.878875 | 100.855959 | Majlis Perbandaran Teluk Intan |
| 31 | T031 | 43 | 3.878880 | 100.856323 | Majlis Perbandaran Teluk Intan |
| 32 | T032 | 40 | 3.878890 | 100.856706 | Majlis Perbandaran Teluk Intan |
| 33 | T033 | 48 | 3.878902 | 100.857067 | Majlis Perbandaran Teluk Intan |
| 34 | T034 | 41 | 3.878891 | 100.857492 | Majlis Perbandaran Teluk Intan |
| 35 | T035 | 52 | 3.878885 | 100.857865 | Majlis Perbandaran Teluk Intan |
| 36 | T036 | 45 | 3.878890 | 100.858331 | Majlis Perbandaran Teluk Intan |

Proposed New Pole Coordinate

| No. | Pole Number | Distance (m) | Latitude | Longitude | Local Authority |
|-----|----------------|--------------|----------|------------|--------------------------------|
| 37 | T037 | 40 | 3.878865 | 100.858730 | Majlis Perbandaran Teluk Intan |
| 38 | T038 | 36 | 3.878889 | 100.859088 | Majlis Perbandaran Teluk Intan |
| 39 | T039 | 32 | 3.878890 | 100.859411 | Majlis Perbandaran Teluk Intan |
| 40 | T040 (JOINT 3) | 40 | 3.878880 | 100.859689 | Majlis Perbandaran Teluk Intan |
| 41 | T041 | 47 | 3.878530 | 100.859697 | Majlis Perbandaran Teluk Intan |
| 42 | T042 (FDP 3) | 51 | 3.878112 | 100.859697 | Majlis Perbandaran Teluk Intan |
| 43 | T043 | 38 | 3.879335 | 100.859718 | Majlis Perbandaran Teluk Intan |
| 44 | T044 | 43 | 3.879668 | 100.859724 | Majlis Perbandaran Teluk Intan |
| 45 | T045 | 39 | 3.880047 | 100.859725 | Majlis Perbandaran Teluk Intan |
| 46 | T046 | 40 | 3.880392 | 100.859724 | Majlis Perbandaran Teluk Intan |
| 47 | T047 | 40 | 3.880766 | 100.859725 | Majlis Perbandaran Teluk Intan |
| 48 | T048 | 46 | 3.881130 | 100.859726 | Majlis Perbandaran Teluk Intan |
| 49 | T049 | 41 | 3.881541 | 100.859726 | Majlis Perbandaran Teluk Intan |
| 50 | T050 | 38 | 3.881905 | 100.859722 | Majlis Perbandaran Teluk Intan |
| 51 | T051 | 35 | 3.882253 | 100.859724 | Majlis Perbandaran Teluk Intan |
| 52 | T052 | 46 | 3.882555 | 100.859735 | Majlis Perbandaran Teluk Intan |
| 53 | T053 | 37 | 3.882970 | 100.859721 | Majlis Perbandaran Teluk Intan |
| 54 | T054 | 44 | 3.883291 | 100.859726 | Majlis Perbandaran Teluk Intan |
| 55 | T055 (FDP 4) | 48 | 3.883692 | 100.859726 | Majlis Perbandaran Teluk Intan |
| 56 | T056 | 38 | 3.884118 | 100.859745 | Majlis Perbandaran Teluk Intan |
| 57 | T057 | 35 | 3.884467 | 100.859735 | Majlis Perbandaran Teluk Intan |
| 58 | T058 | 45 | 3.884779 | 100.859735 | Majlis Perbandaran Teluk Intan |
| 59 | T059 | 22 | 3.885182 | 100.859741 | Majlis Perbandaran Teluk Intan |
| 60 | T060 (FDP 12) | 16 | 3.885333 | 100.859860 | Majlis Perbandaran Teluk Intan |
| 61 | T061 | 47 | 3.879058 | 100.852352 | Majlis Perbandaran Teluk Intan |
| 62 | T062 | 43 | 3.879484 | 100.852346 | Majlis Perbandaran Teluk Intan |
| 63 | T063 | 45 | 3.879874 | 100.852349 | Majlis Perbandaran Teluk Intan |
| 64 | T064 | 51 | 3.880275 | 100.852346 | Majlis Perbandaran Teluk Intan |
| 65 | T065 | 58 | 3.880744 | 100.852331 | Majlis Perbandaran Teluk Intan |
| 66 | T066 | 41 | 3.881268 | 100.852334 | Majlis Perbandaran Teluk Intan |
| 67 | T067 | 47 | 3.881629 | 100.852338 | Majlis Perbandaran Teluk Intan |
| 68 | T068 | 55 | 3.882065 | 100.852337 | Majlis Perbandaran Teluk Intan |
| 69 | T069 | 49 | 3.882553 | 100.852333 | Majlis Perbandaran Teluk Intan |
| 70 | T070 | 45 | 3.882997 | 100.852339 | Majlis Perbandaran Teluk Intan |
| 71 | T071 | 53 | 3.883404 | 100.852334 | Majlis Perbandaran Teluk Intan |
| 72 | T072 | 49 | 3.883884 | 100.852331 | Majlis Perbandaran Teluk Intan |
| 73 | T073 | 43 | 3.884332 | 100.852337 | Majlis Perbandaran Teluk Intan |
| 74 | T074 | 55 | 3.884713 | 100.852311 | Majlis Perbandaran Teluk Intan |
| 75 | T075 | 43 | 3.885202 | 100.852323 | Majlis Perbandaran Teluk Intan |
| 76 | T076 (FDP 5) | 51 | 3.885593 | 100.852261 | Majlis Perbandaran Teluk Intan |
| 77 | T077 | 50 | 3.886052 | 100.852317 | Majlis Perbandaran Teluk Intan |



PROJEK PENYEDIAAN DAN PENYELENGGARAAN POINT OF PRESENT (POP) FASA 2: HAB INFRASTUKTUR GENTIAN OPTIK BERHAMPIRAN DENGAN SEKOLAH, KAWASAN PERINDUSTRIAN, PREMIS KERAJAAN DAN KOMUNITI SEKITARNYA OLEH KEMENTERIAN KOMUNIKASI MALAYSIA - ZON UTARA (KKMM.400-11/17/132(1))

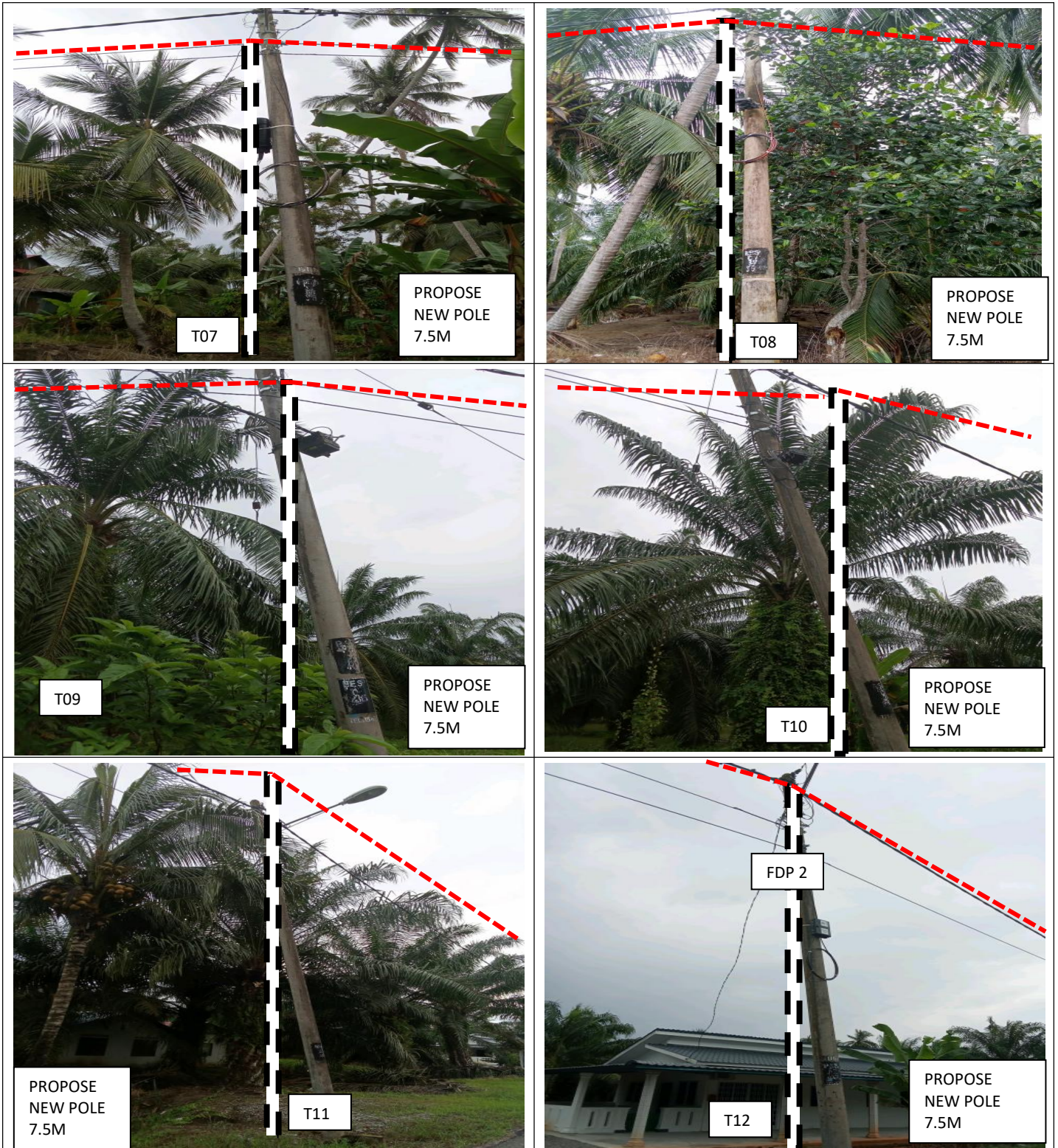


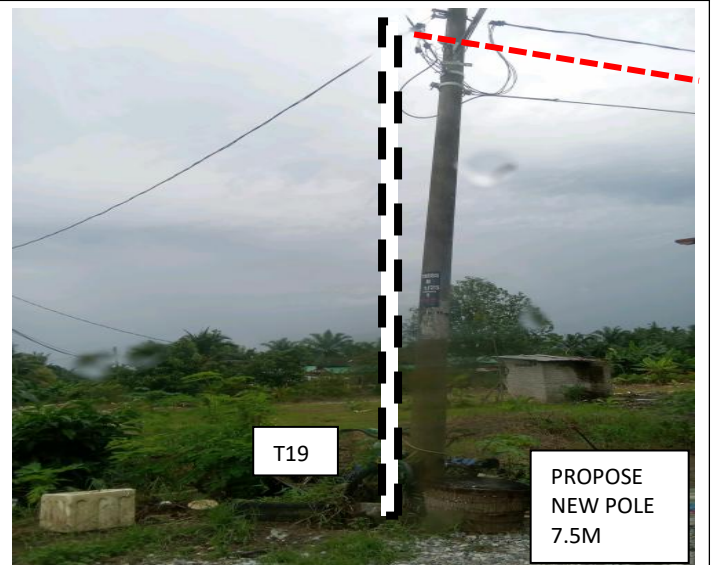
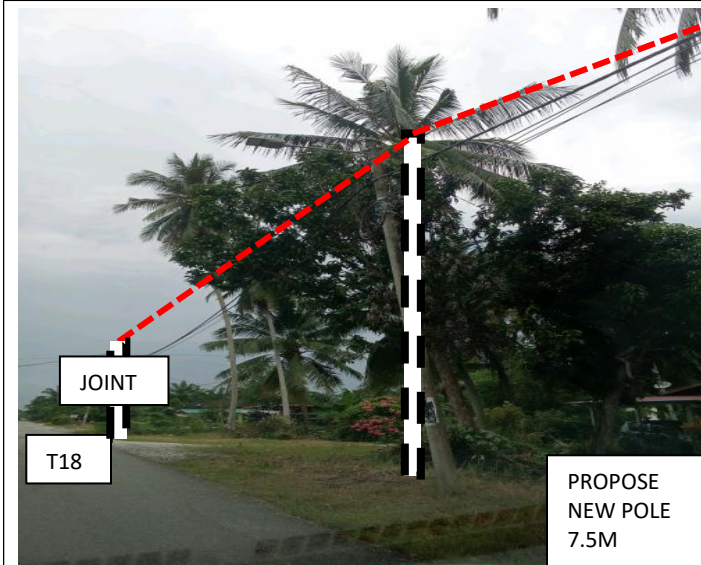
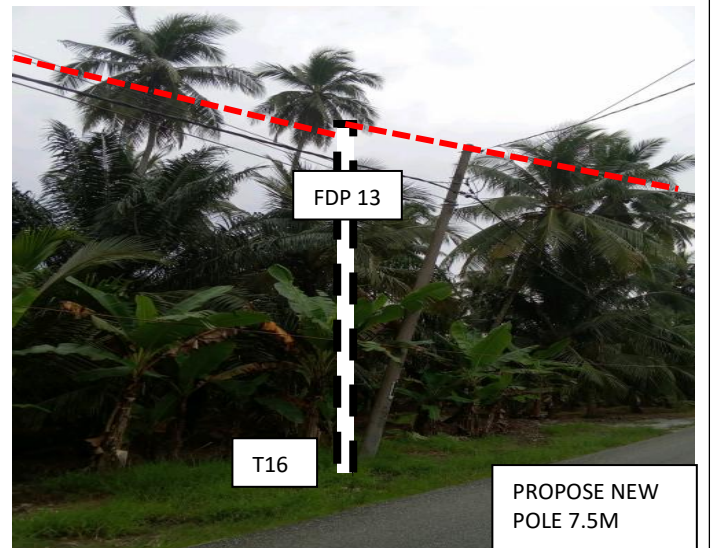
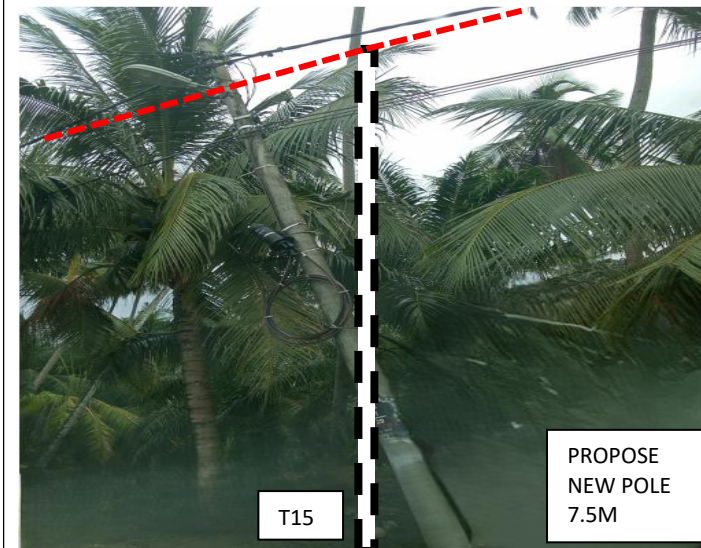
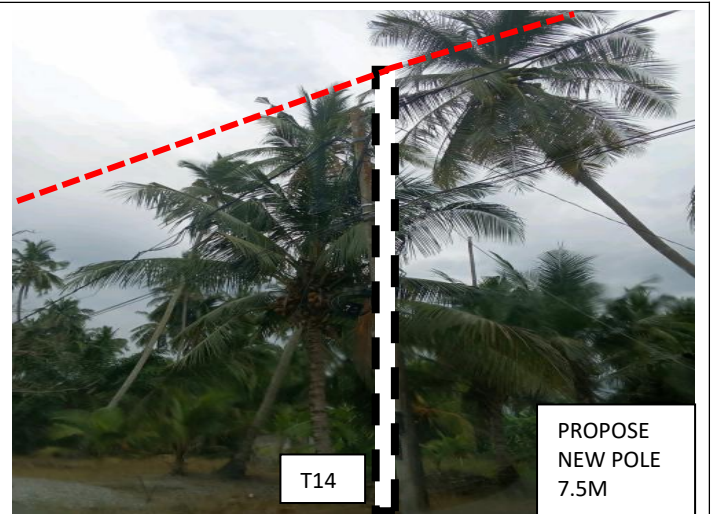
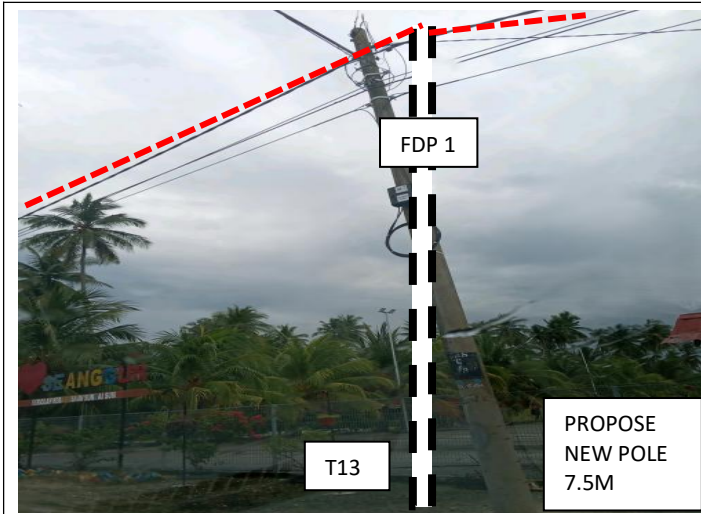
Proposed New Pole Coordinate

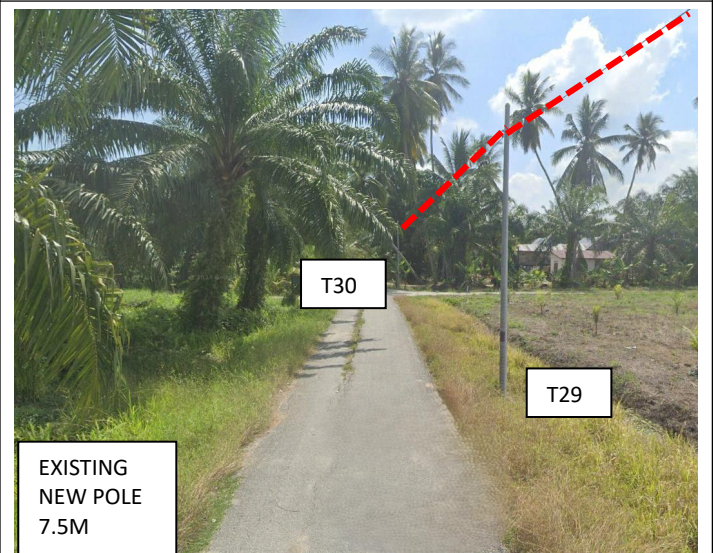
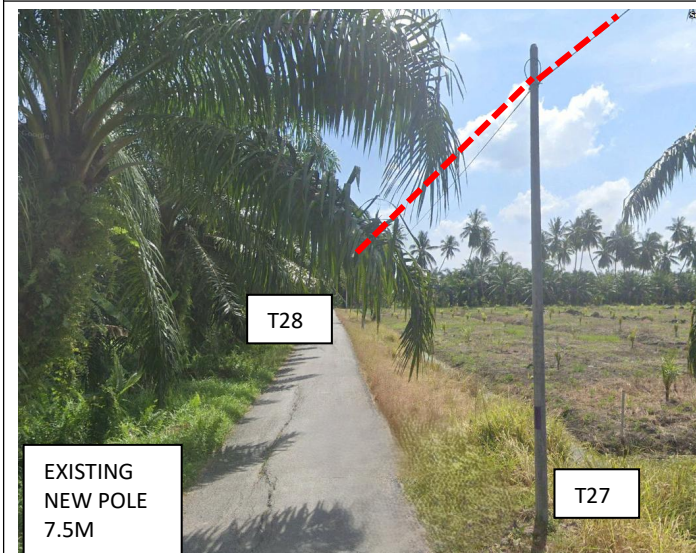
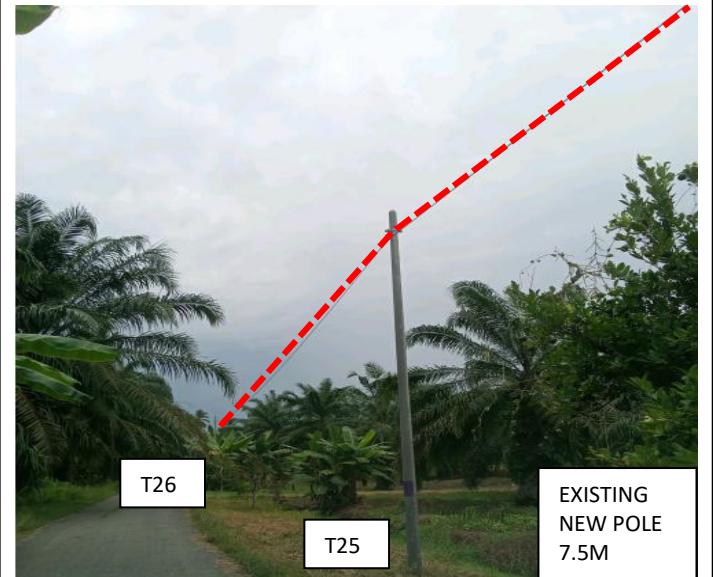
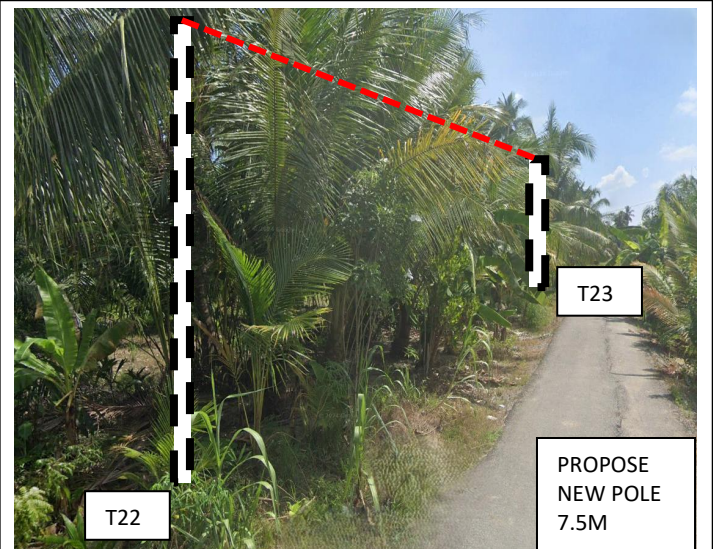
| No. | Pole Number | Distance (m) | Latitude | Longitude | Local Authority |
|-----|----------------|--------------|----------|------------|--------------------------------|
| 78 | T078 | 50 | 3.886515 | 100.852301 | Majlis Perbandaran Teluk Intan |
| 79 | T079 | 47 | 3.886964 | 100.852317 | Majlis Perbandaran Teluk Intan |
| 80 | T080 | 52 | 3.887376 | 100.852329 | Majlis Perbandaran Teluk Intan |
| 81 | T081 | 45 | 3.887833 | 100.852318 | Majlis Perbandaran Teluk Intan |
| 82 | T082 | 48 | 3.888237 | 100.852319 | Majlis Perbandaran Teluk Intan |
| 83 | T083 | 29 | 3.888661 | 100.852337 | Majlis Perbandaran Teluk Intan |
| 84 | T084 (JOINT 4) | 22 | 3.888724 | 100.852088 | Majlis Perbandaran Teluk Intan |
| 85 | T085 | 18 | 3.888887 | 100.852178 | Majlis Perbandaran Teluk Intan |
| 86 | T086 (FDP 10) | 19 | 3.888872 | 100.852046 | Majlis Perbandaran Teluk Intan |
| 87 | T087 | 23 | 3.888867 | 100.851873 | Majlis Perbandaran Teluk Intan |
| 88 | T088 | 15 | 3.888865 | 100.851672 | Majlis Perbandaran Teluk Intan |
| 89 | T089 (FDP 11) | 46 | 3.888740 | 100.851661 | Majlis Perbandaran Teluk Intan |
| 90 | T090 | 17 | 3.889303 | 100.852161 | Majlis Perbandaran Teluk Intan |
| 91 | T091 (FDP 8) | 17 | 3.889284 | 100.852043 | Majlis Perbandaran Teluk Intan |
| 92 | T092 | 23 | 3.889282 | 100.851877 | Majlis Perbandaran Teluk Intan |
| 93 | T093 | 24 | 3.889290 | 100.851682 | Majlis Perbandaran Teluk Intan |
| 94 | T094 | 22 | 3.889284 | 100.851473 | Majlis Perbandaran Teluk Intan |
| 95 | T095 (FDP 9) | 21 | 3.889298 | 100.851289 | Majlis Perbandaran Teluk Intan |
| 96 | T096 | 41 | 3.889488 | 100.852165 | Majlis Perbandaran Teluk Intan |
| 97 | T097 | 24 | 3.889852 | 100.852179 | Majlis Perbandaran Teluk Intan |
| 98 | T098 (FDP 6) | 27 | 3.890057 | 100.852186 | Majlis Perbandaran Teluk Intan |
| 99 | T099 | 33 | 3.890037 | 100.851950 | Majlis Perbandaran Teluk Intan |
| 100 | T100 (FDP 7) | 30 | 3.890035 | 100.851654 | Majlis Perbandaran Teluk Intan |

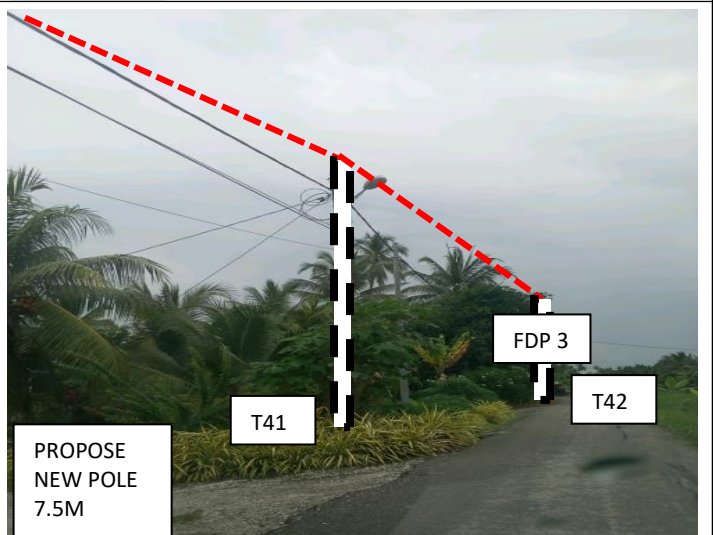
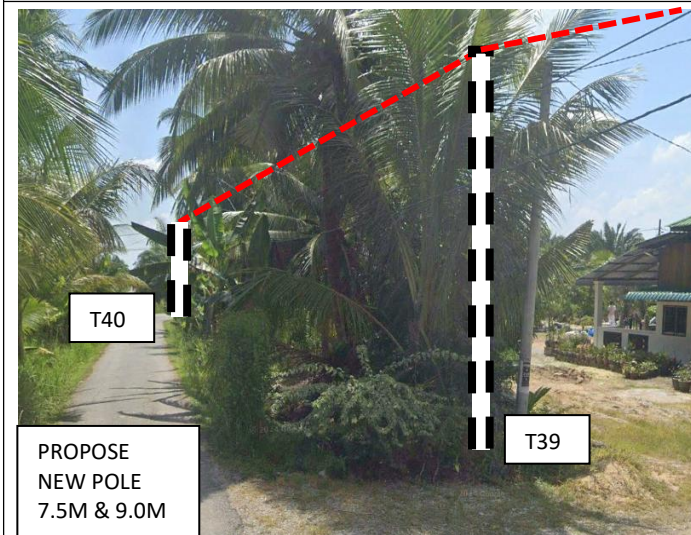
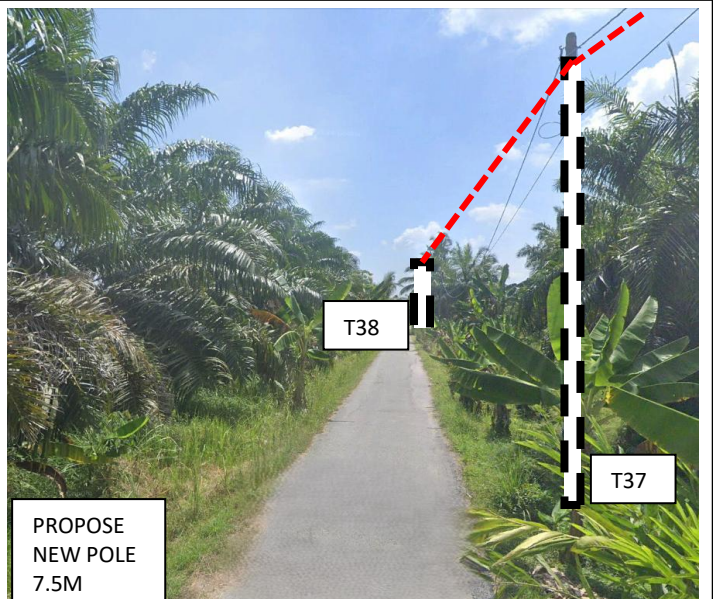
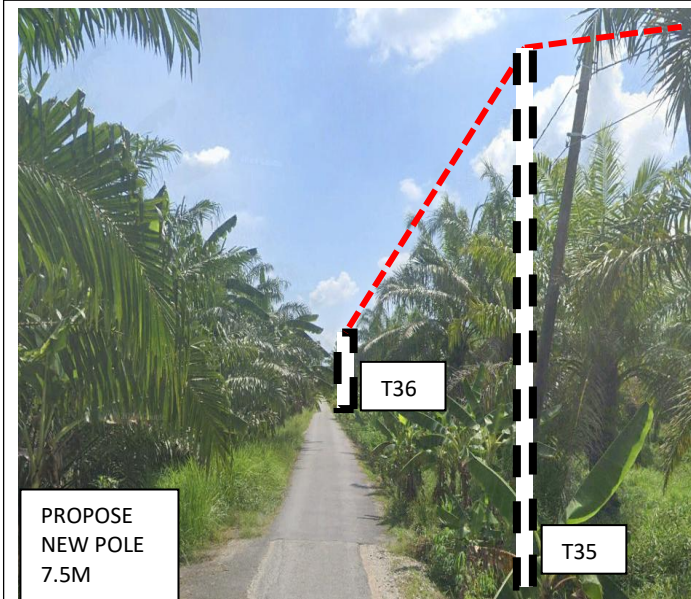
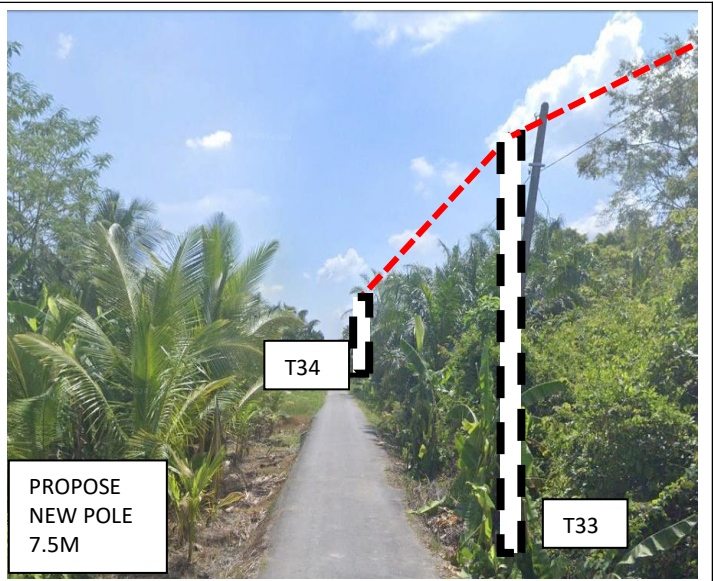
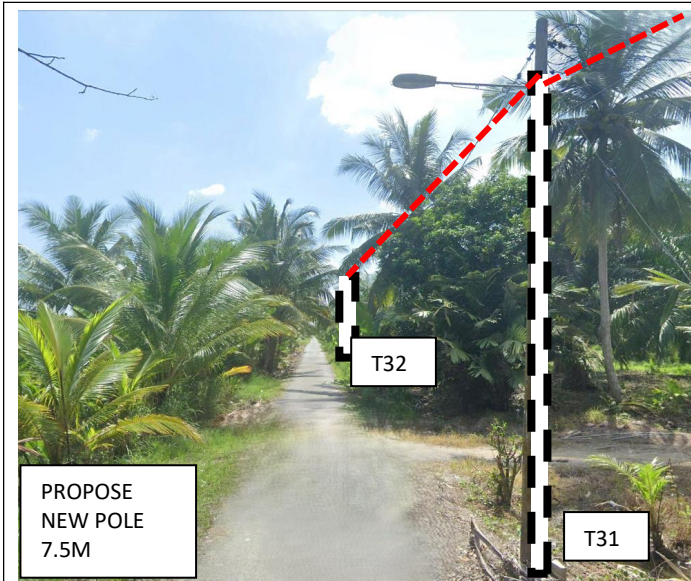
6.0 SITE PHOTOS - PROPOSED NEW POLE

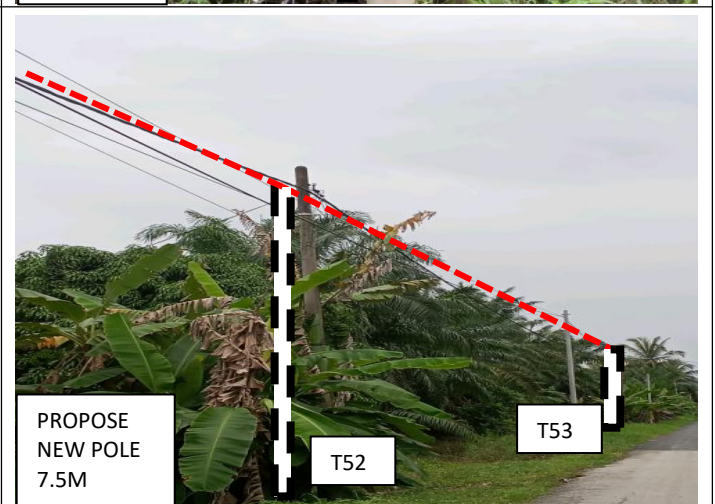
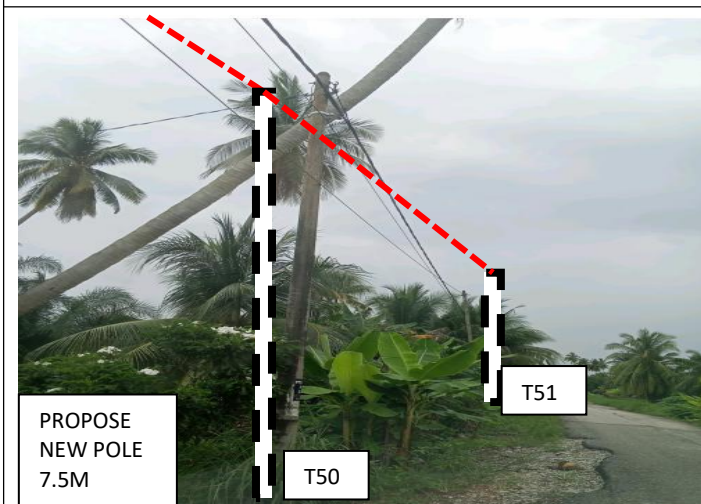
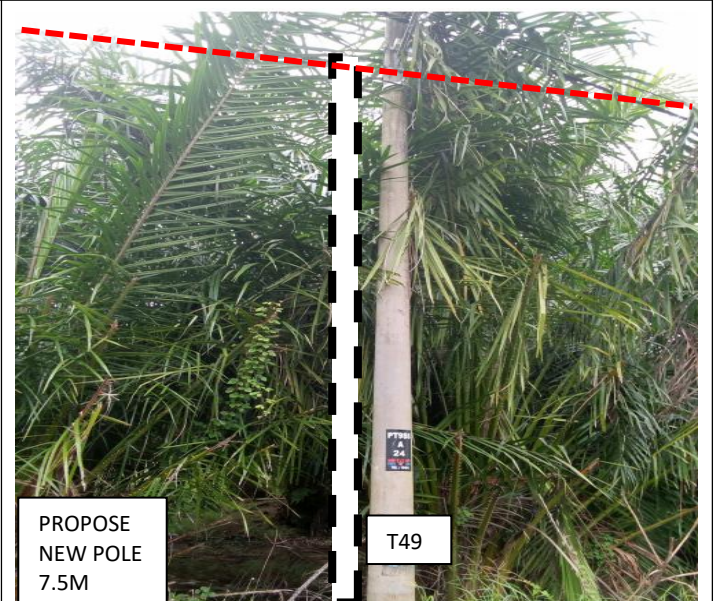
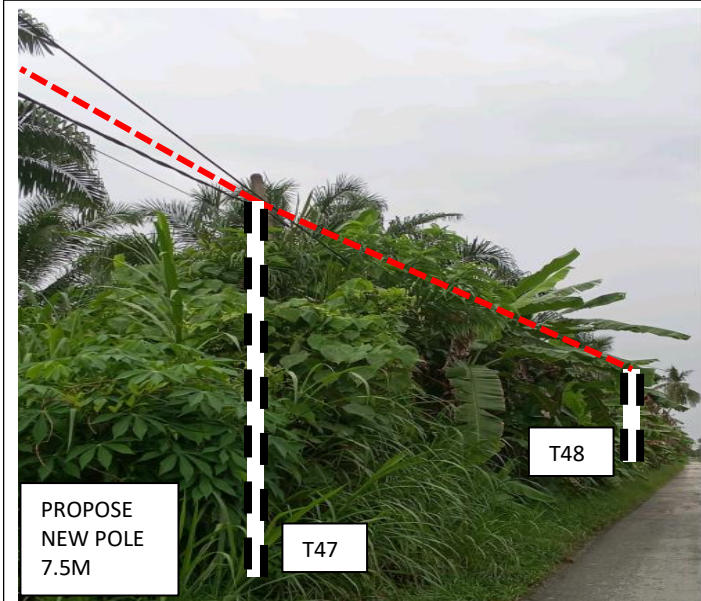
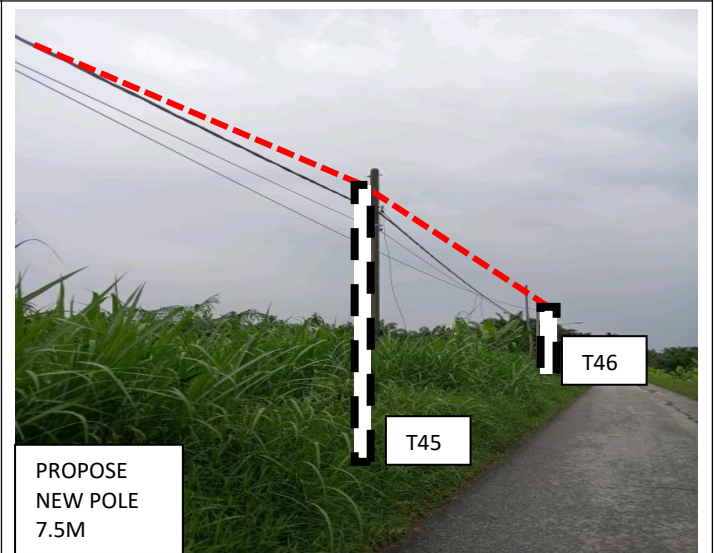
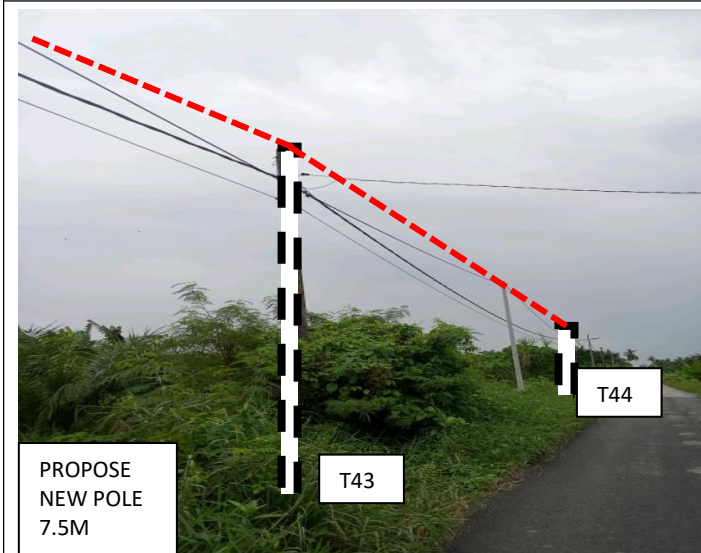


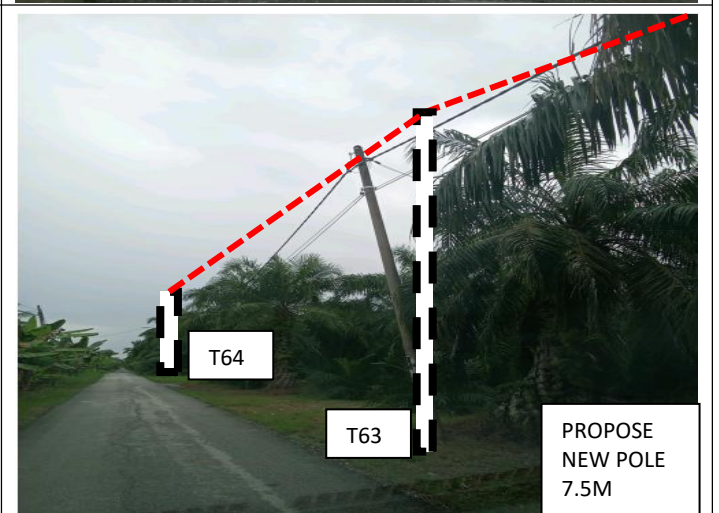
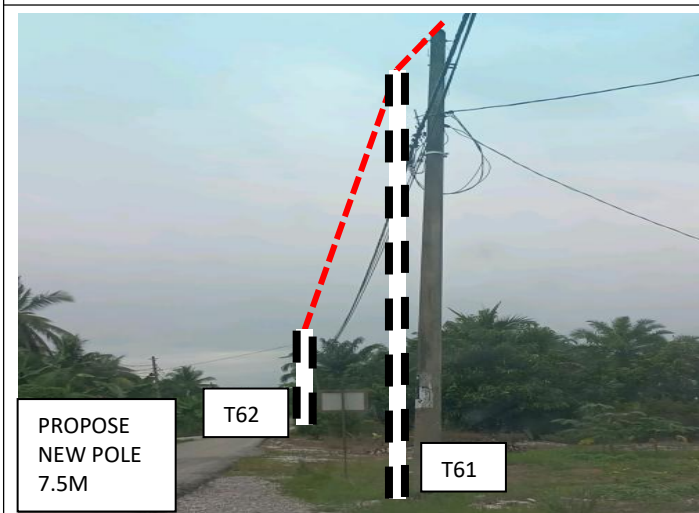
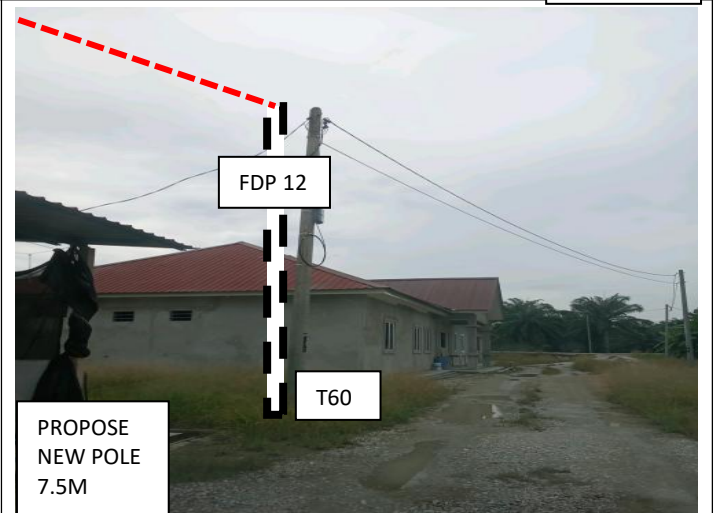
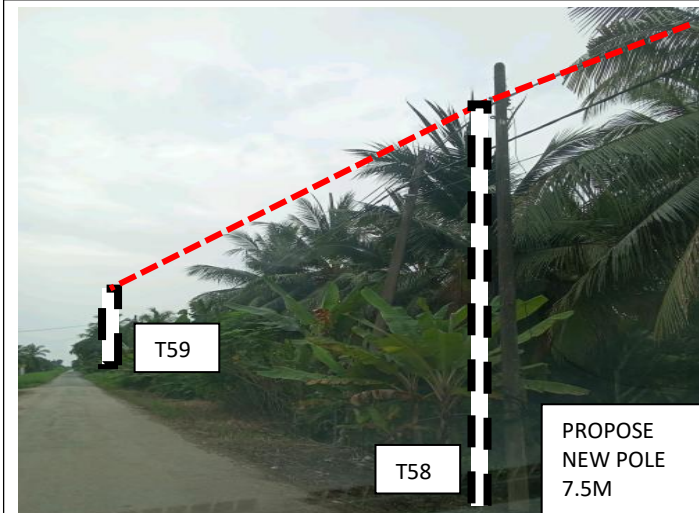
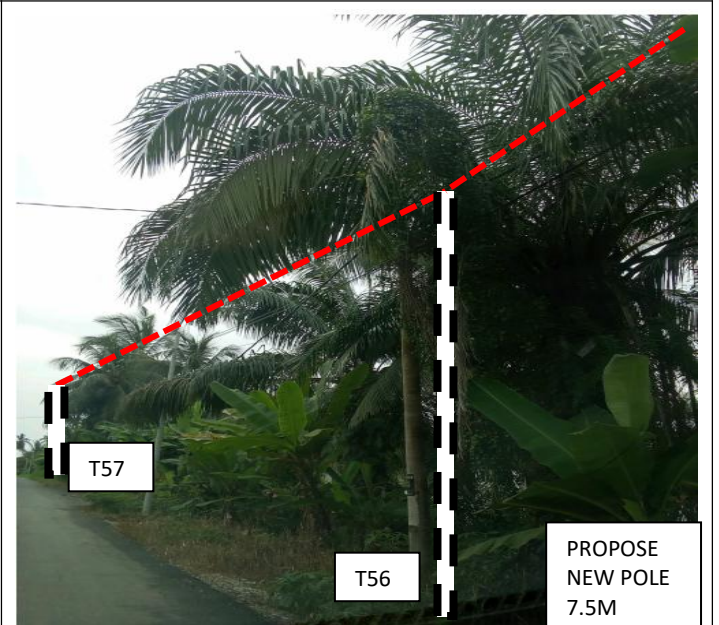
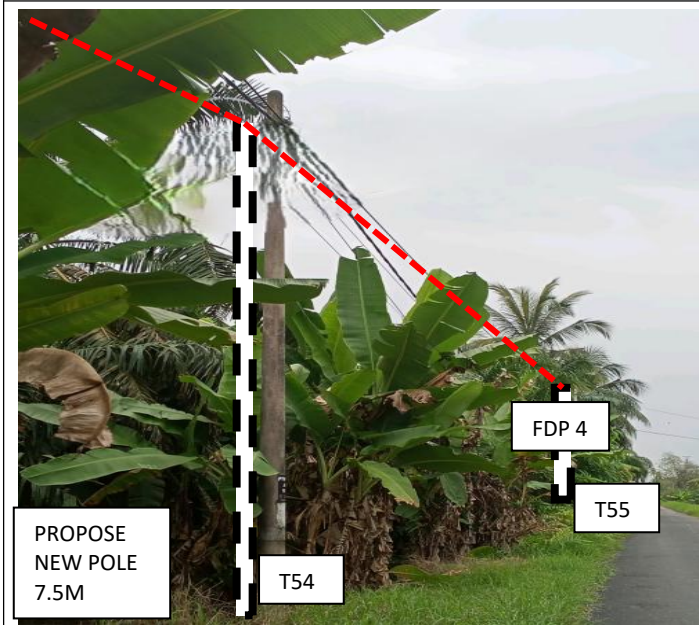


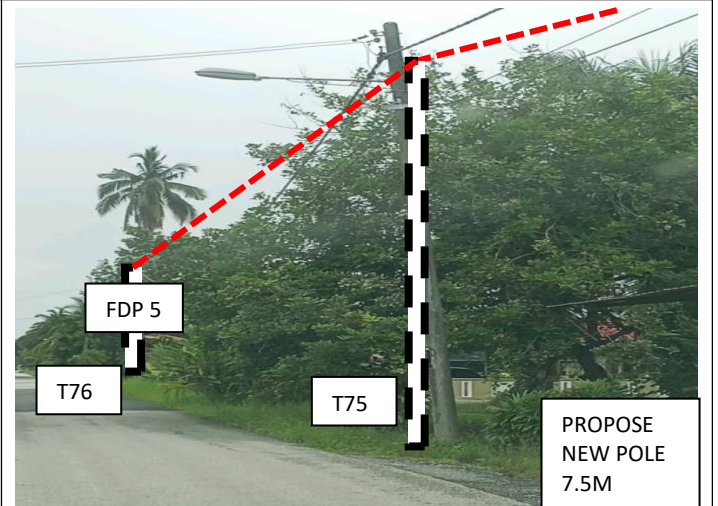
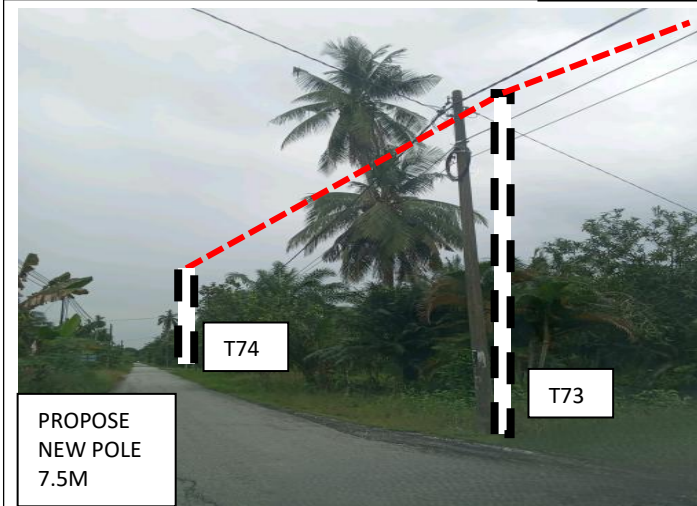
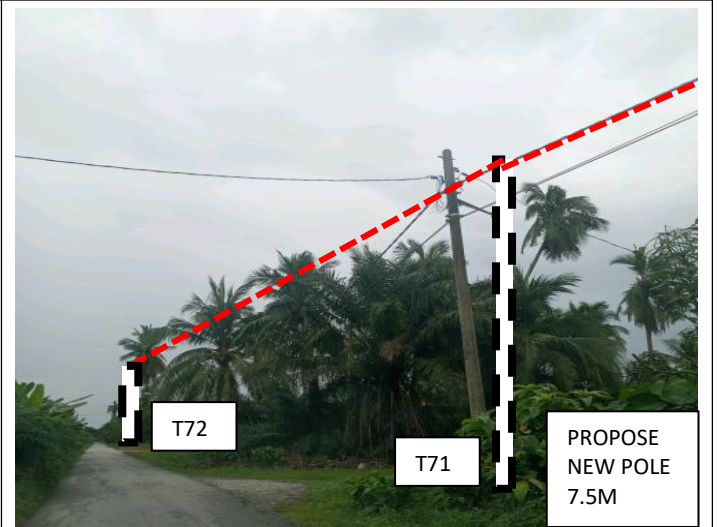
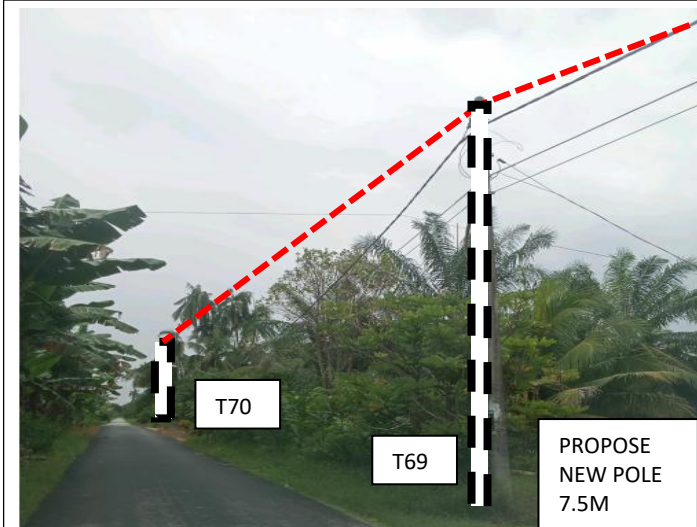
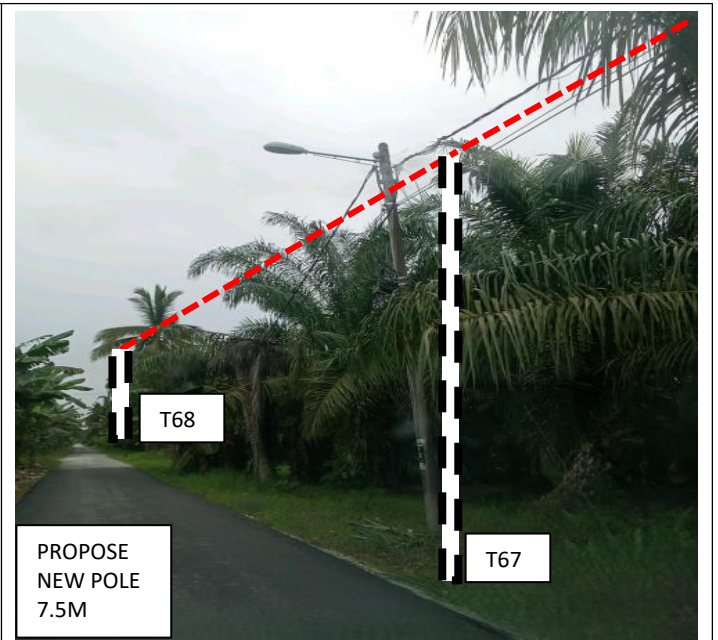
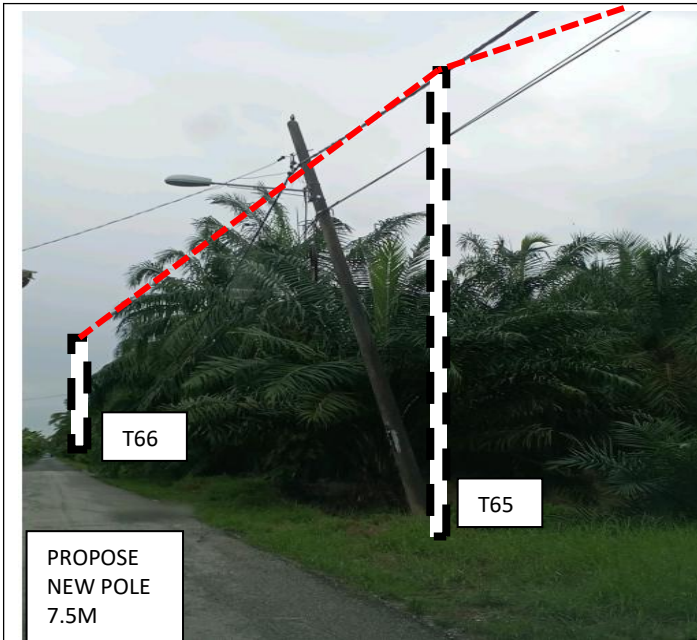


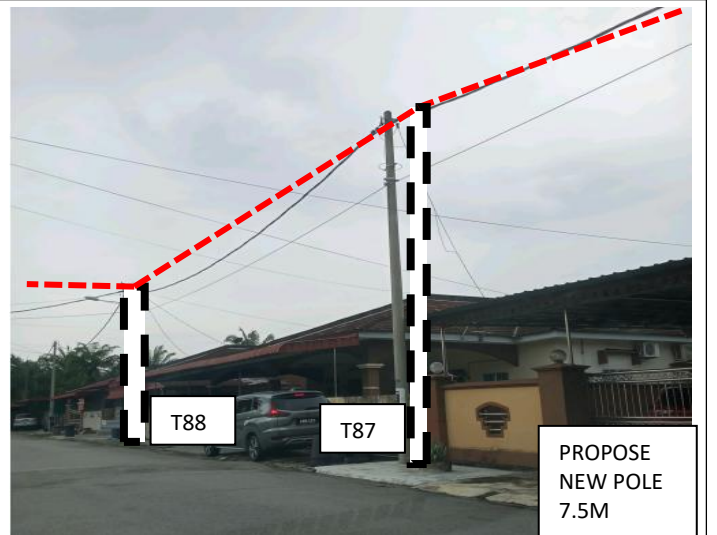
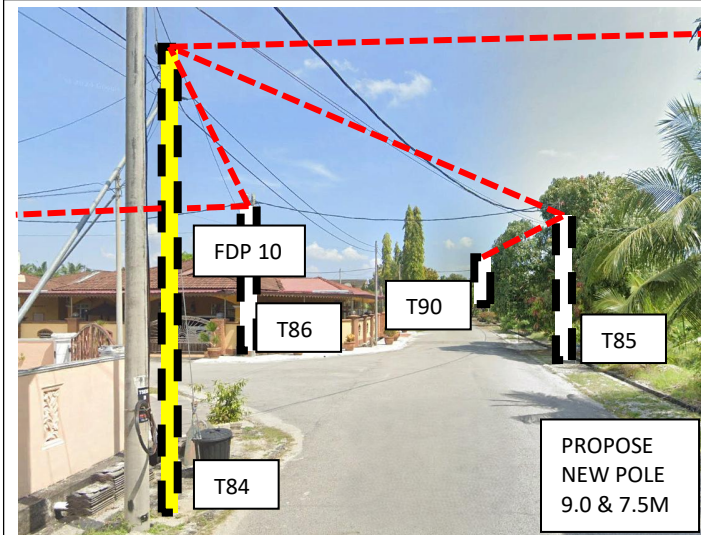
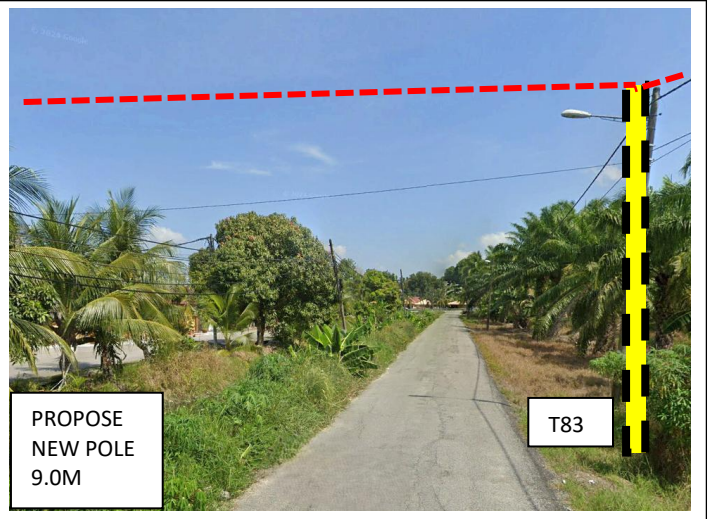
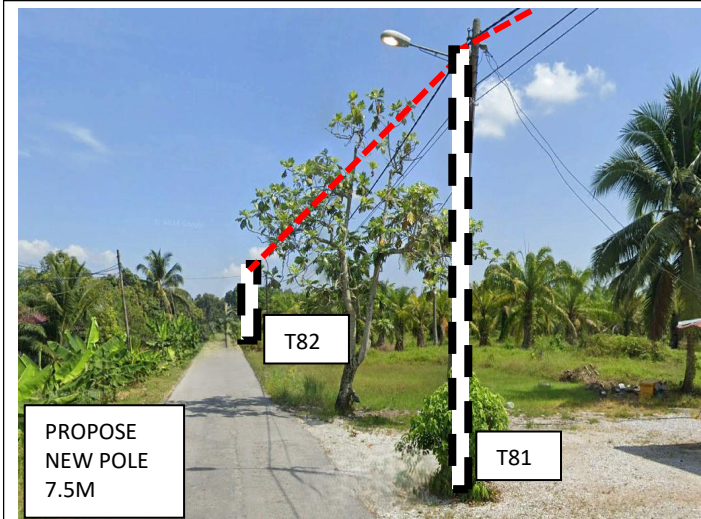
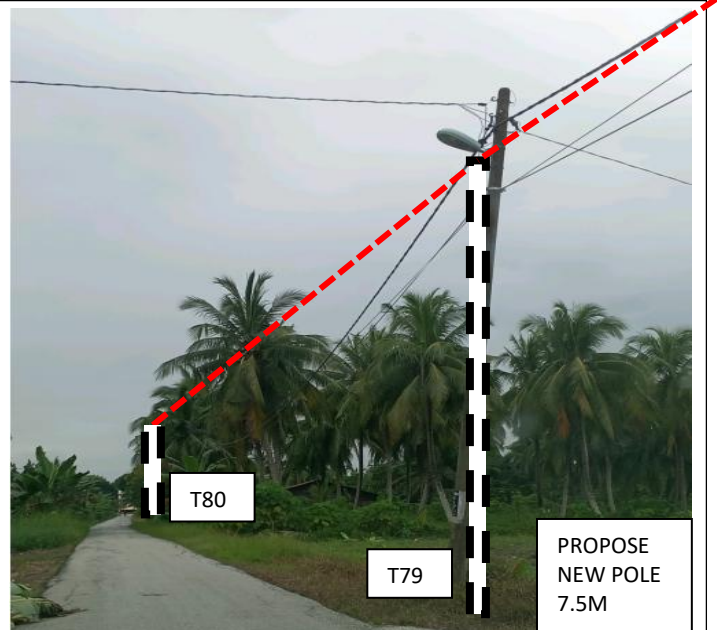
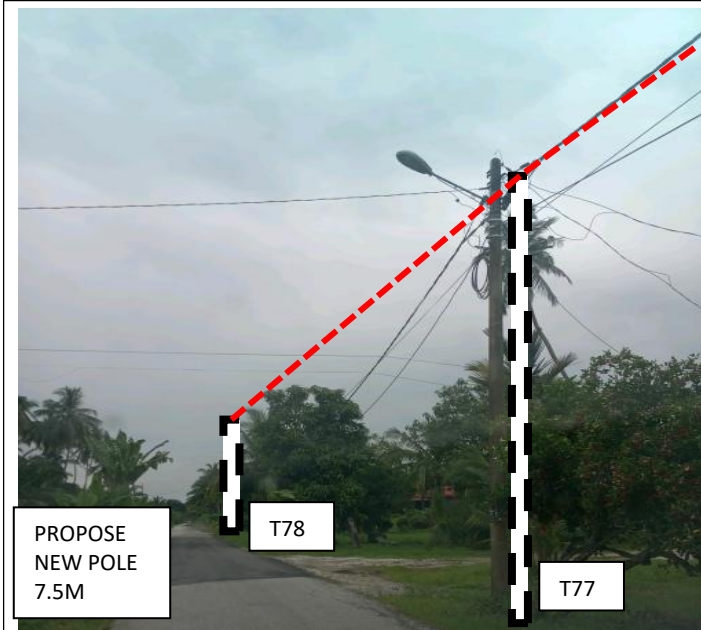


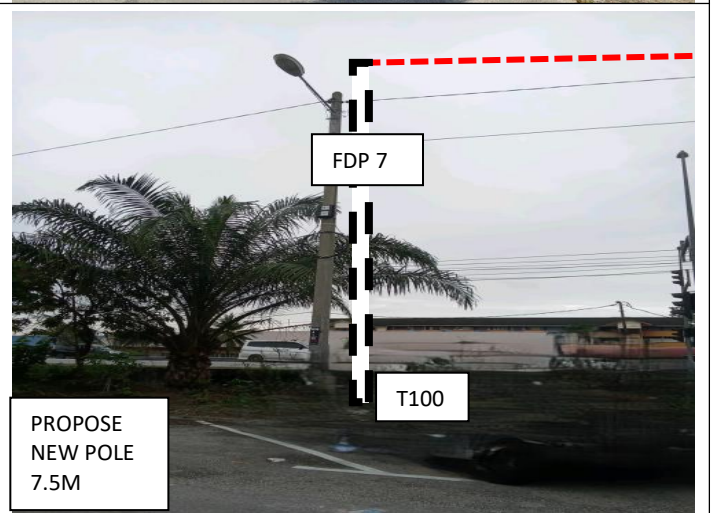
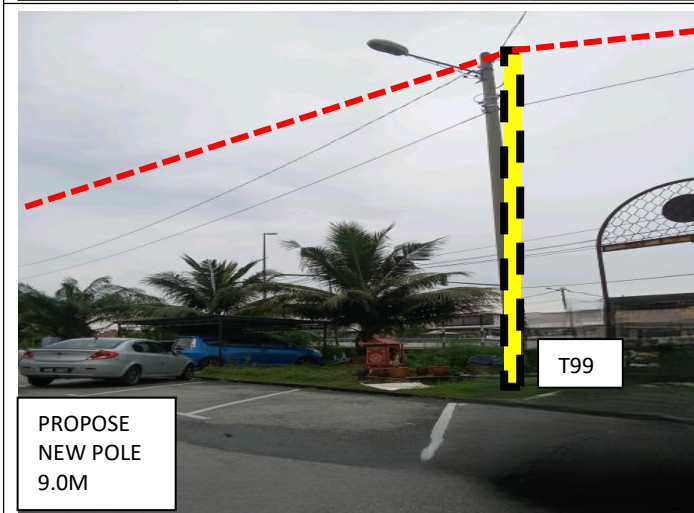
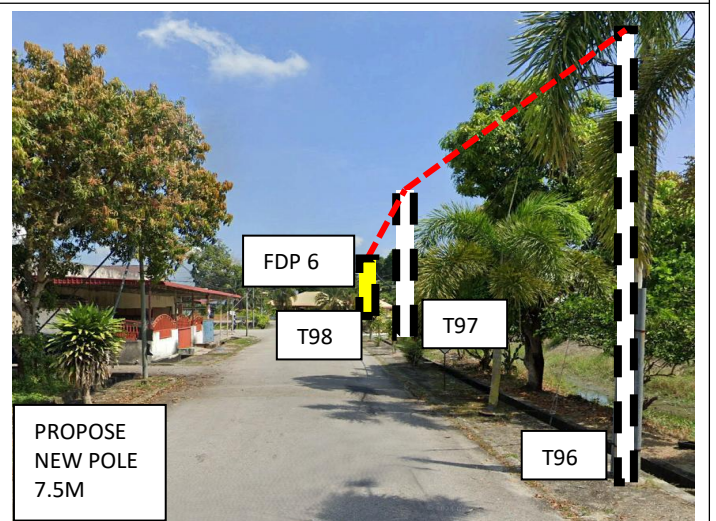
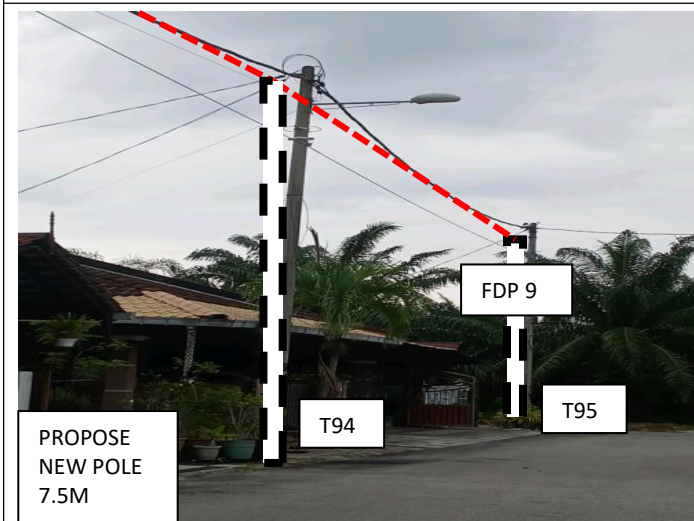
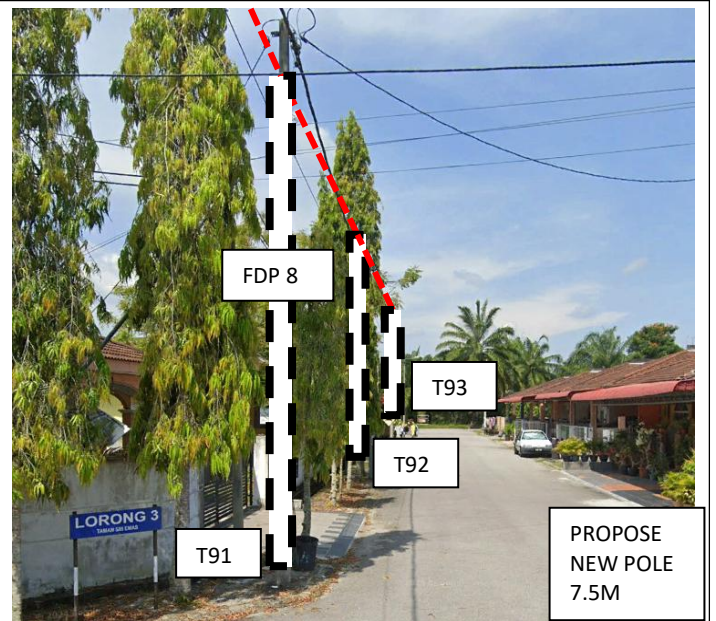
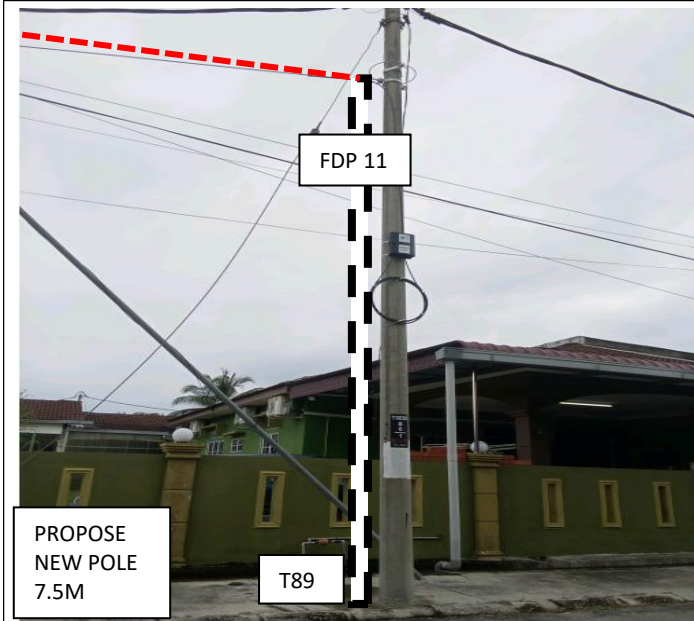














PROJEK PENYEDIAAN DAN PENYELENGGARAAN POINT OF PRESENT (POP) FASA 2: HAB INFRASTRUKTUR GENTIAN OPTIK BERHAMPIRAN DENGAN SEKOLAH, KAWASAN PERINDUSTRIAN, PREMIS KERAJAAN DAN KOMUNITI SEKITARNYA OLEH KEMENTERIAN KOMUNIKASI MALAYSIA - ZON UTARA (KKMM.400-11/17/132(1))

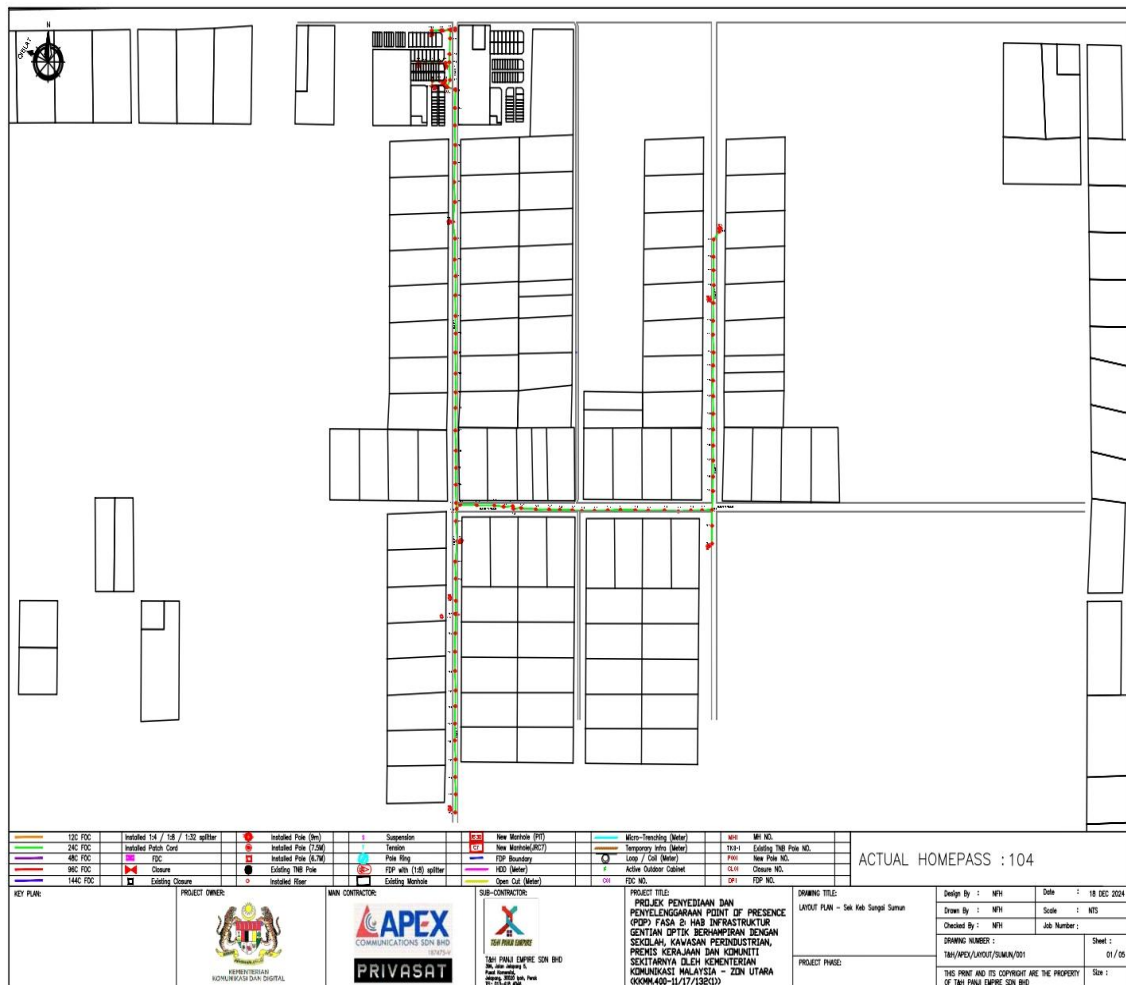


7.0 3rd PARTIES DEPENDENCIES

| NO | LOCAL COUNCIL / AUTHORITY | REMARK |
|----|--------------------------------|--------|
| 1 | Majlis Perbandaran Teluk Intan | 4400M |

8.0 Drawing

Layout 1

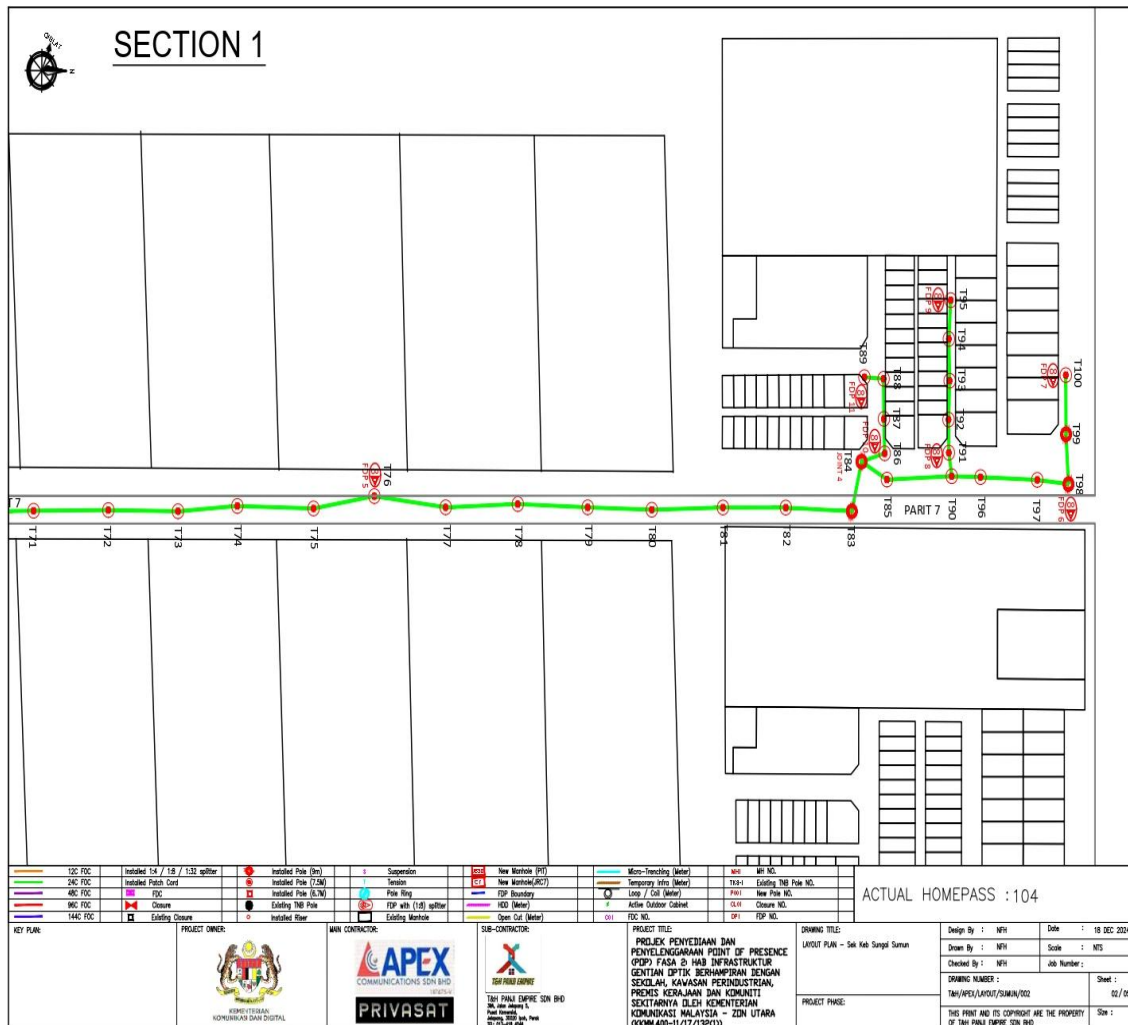




PROJEK PENYEDIAAN DAN PENYELENGGARAAN POINT OF PRESENT (POP) FASA 2: HAB INFRASTRUKTUR GENTIAN OPTIK BERHAMPIRAN DENGAN SEKOLAH, KAWASAN PERINDUSTRIAN, PREMIS KERAJAAN DAN KOMUNITI SEKITARNYA OLEH KEMENTERIAN KOMUNIKASI MALAYSIA - ZON UTARA (KKMM.400-11/17/132(1))



Layout 2

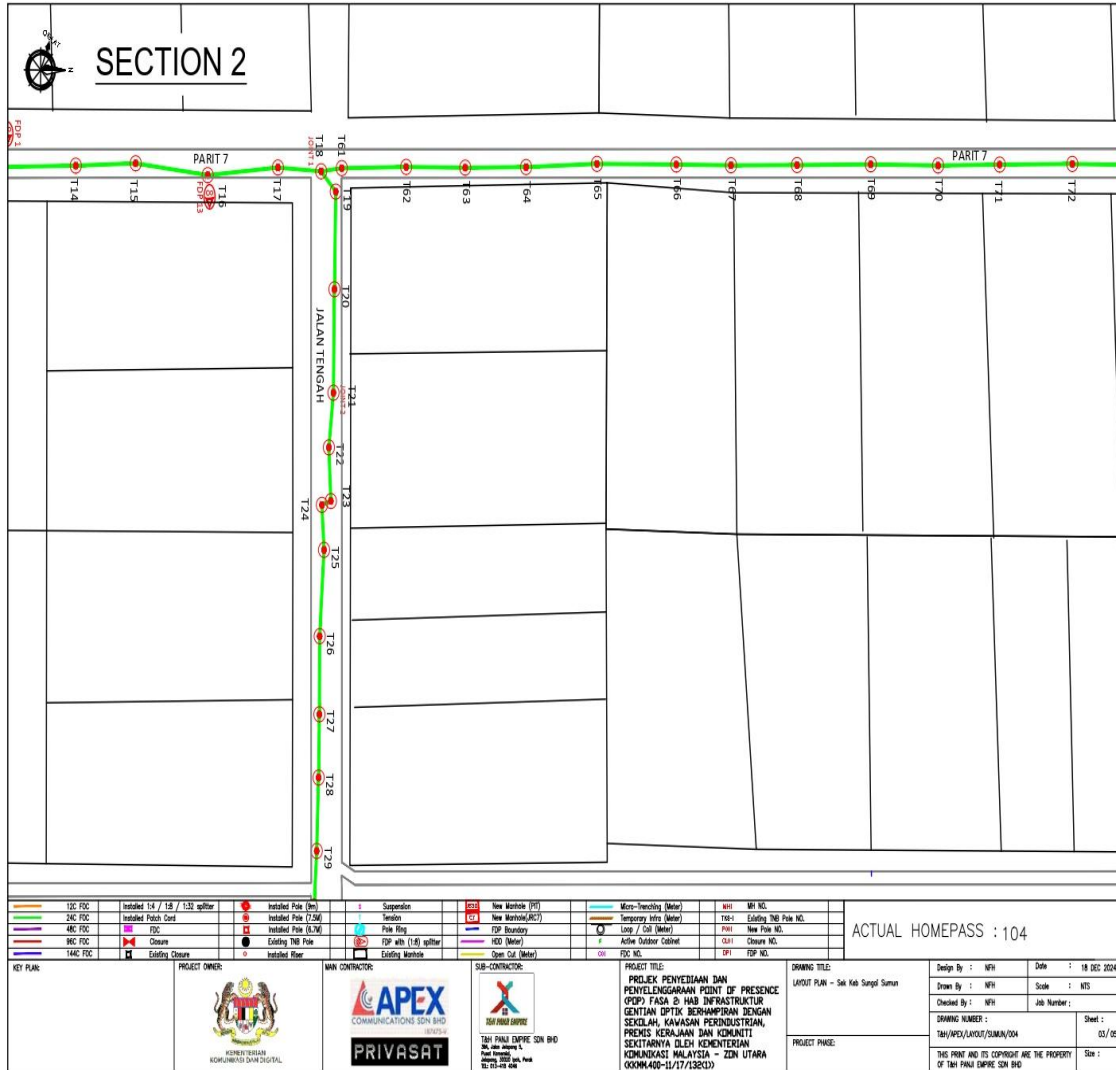




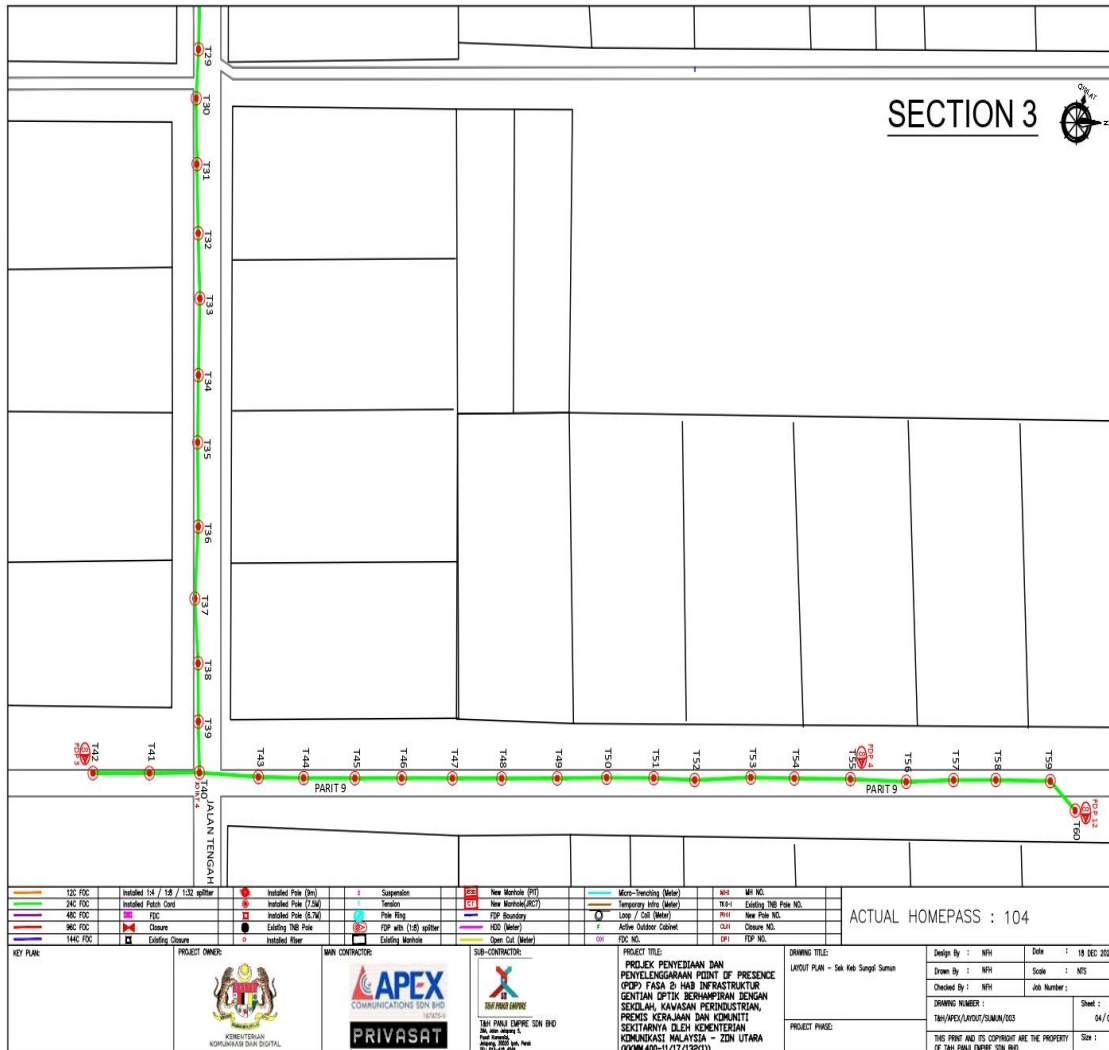
PROJEK PENYEDIAAN DAN PENYELENGGARAAN POINT OF PRESENCE (POP) FASA 2: HAB INFRASTRUKTUR GENTIAN OPTIK BERHAMPIRAN DENGAN SEKOLAH, KAWASAN PERINDUSTRIAN, PREMIS KERAJAAN DAN KOMUNITI SEKITARNYA OLEH KEMENTERIAN KOMUNIKASI MALAYSIA - ZON UTARA (KKMM.400-11/17/132(1))



Layout 3



Layout 4

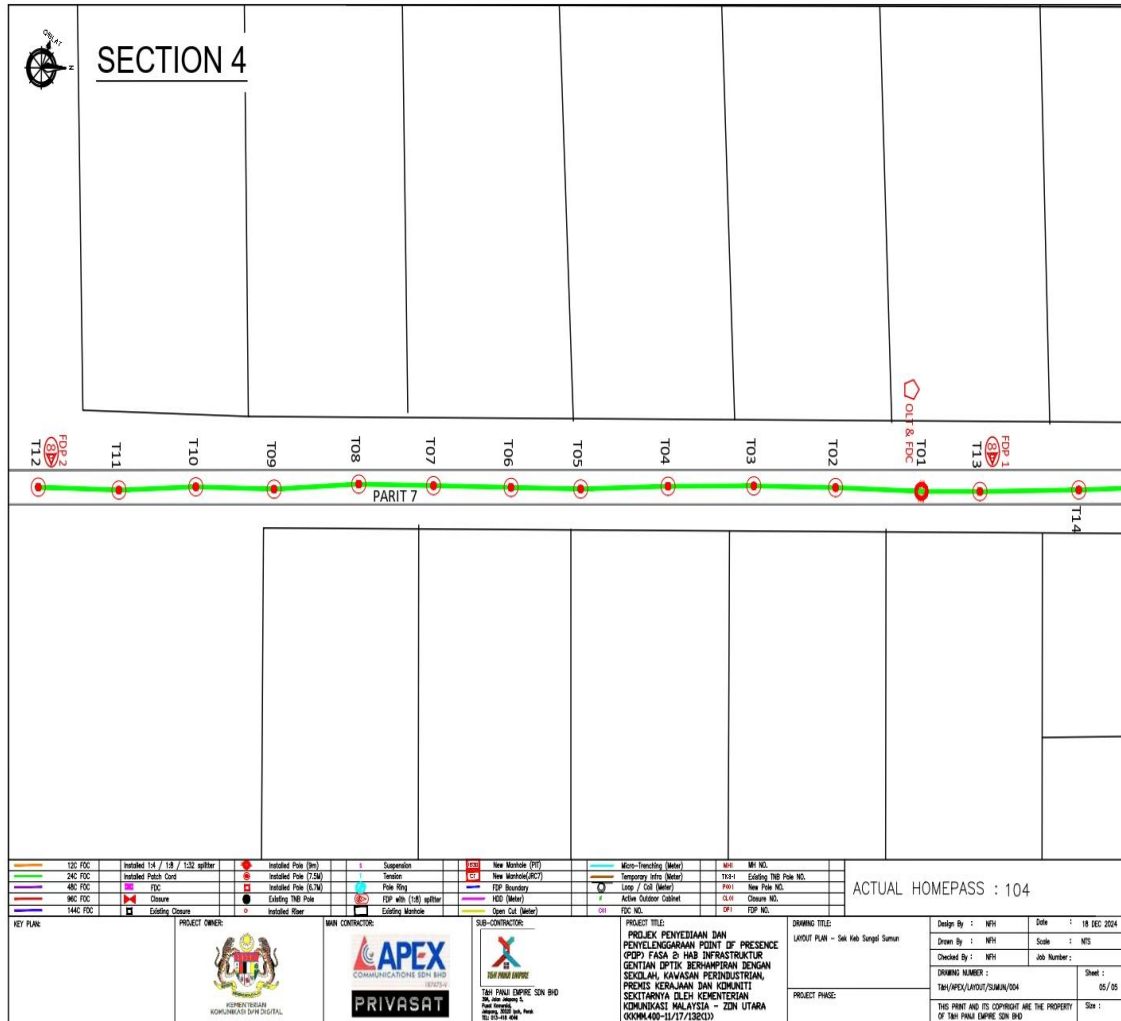




PROJEK PENYEDIAAN DAN PENYELENGGARAAN POINT OF PRESENCE (POP) FASA 2: HAB INFRASTRUKTUR GENTIAN OPTIK BERHAMPIRAN DENGAN SEKOLAH, KAWASAN PERINDUSTRIAN, PREMIS KERAJAAN DAN KOMUNITI SEKITARNYA OLEH KEMENTERIAN KOMUNIKASI MALAYSIA - ZON UTARA (KKMM.400-11/17/132(1))



Layout 5



| | | | | | | | |
|----------|----------------------------------|-----------------------|------------------------|-------------------|-------------------------|---------|-----------------------|
| 120 FOC | Installed 14 / 18 / 132 splitter | Installed Pole (6m) | 1 Suspension | New Worksite (PT) | Micro-trenching (Meter) | 604 | WI NO. |
| 240 FOC | Installed Patch Cord | Installed Pole (7.5M) | Tension | New Worksite (AC) | Temporary Infra (Meter) | 704-1 | Existing TRB Pole NO. |
| 480 FOC | FOC | Installed Pole (6.7M) | Pole Ring | FSP Boundary | Loop / Coil (Meter) | F800 | New Pole NO. |
| 960 FOC | Closure | Existing TRB Pole | FSP with 1:80 splitter | N20 (Meter) | Active Outdoor Cabinet | 2100 | Closure NO. |
| 1440 FOC | Existing Closure | Installed River | Existing Methods | Open Cut (Meter) | OH | FSP NO. | |

| | | | | | | | | | | |
|----------------|--------------------|--------------------------|---|---|--|---|-------------------------------|----------------------------------|---|--------------------|
| KEY PLAN | PROJECT OWNER: | MAIN CONTRACTOR: | SUB-CONTRACTOR: T&H PANJI EMPIRE SDN BHD No. 10, Jalan 5/1, Taman Perindustrian, 40000 Shah Alam, Selangor, Malaysia Tel: 03-21-41 444 | PROJECT TITLE: PROJEK PENYEDIAAN DAN PENYELENGGARAAN POINT OF PRESENCE (POP) FASA 2: HAB INFRASTRUKTUR GENTIAN OPTIK BERHAMPIRAN DENGAN SEKOLAH, KAWASAN PERINDUSTRIAN, PREMIS KERAJAAN DAN KOMUNITI SEKITARNYA OLEH KEMENTERIAN KOMUNIKASI MALAYSIA - ZON UTARA (KKMM.400-11/17/132(1)) | DRAWING TITLE: LAYOUT PLAN - Sek Keb Sungai Sumur | Design By : NPH Date : 18 DEC 2024 | Drawn By : NPH Scale : NTS | Checked By : NPH Job Number : | DRAWING NUMBER : TAH/APEX/LAYOUT/SUMUR/004 | Sheet : 05 / 05 |
| PROJECT PHASE: | | | | | | THIS PRINT AND ITS COPYRIGHT ARE THE PROPERTY OF T&H PANJI EMPIRE SDN BHD | | Size : | | |